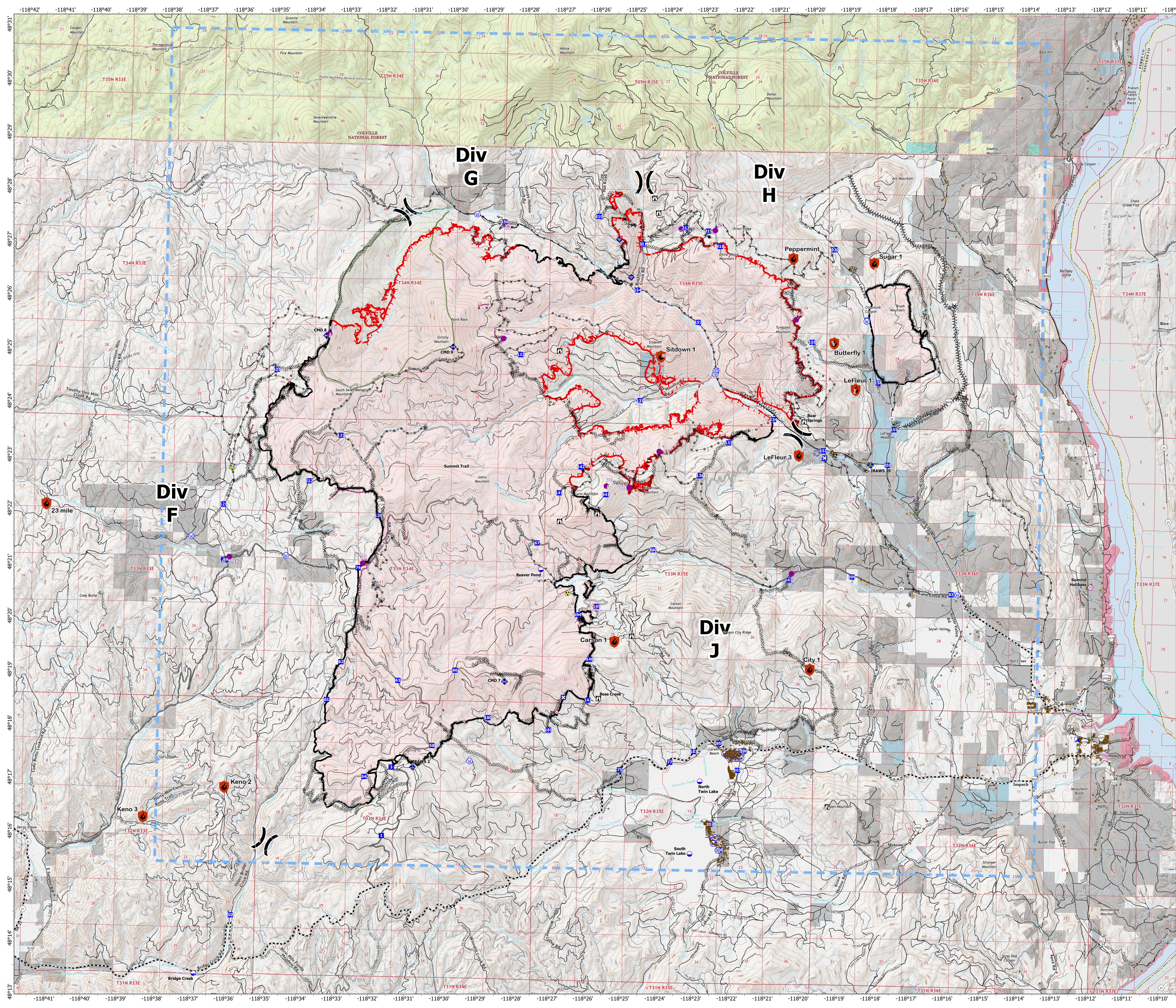


# Ops MAP

## Summit Trail Fire

### WA-COA-200087

46,961 Acres on 09/04/2021 at 19:00  
**September 06, 2021**



- New Starts**
- Out
  - Dip Site
  - Helispot
  - Helibase
  - ⌘ Division Break
  - 📍 Incident Command Post
  - 📍 Drop Point
  - 📍 Closure
  - 📍 Camp
  - 📍 Lookout
  - Hot Spot - Spot Fire
  - Comm Tower
  - Bridge
  - 📍 Mobile Weather Unit
  - 📍 Internet Access
  - 📍 Repeater
  - ⚠ Hazard
  - 📍 Water Source
  - ⋯ Completed Dozer Line
  - ⋯ Completed Fuel Break
  - ⋯ Completed Hand Line
  - ⋯ Completed Mixed Construction Line
  - ⋯ Completed Road as Line
  - ⋯ Planned Hand Line
  - ⋯ Planned Mixed Construction Line
  - ⋯ Planned Road as Line
  - ⋯ Planned Secondary Line
  - Access or Improved Road
  - Other
  - Retardant Drop
  - Fire Edge
  - Contained Line
  - Wildfire Daily Fire Perimeter
  - Main Route - Improved
  - Main Route - Unimproved
  - Local Road
  - 4WD
  - Trail
  - Not Driveable
  - Wilderness Area
  - Private
  - Colville Confederated Tribes
  - Ferry County
  - Indian Allotment Trust Lands
  - National Park Service
  - Open water and lakes
  - US Bureau of Reclamation
  - US Forest Service
  - WA DNR
  - Structures
  - ForestServiceRoadsOpen
  - Structure Triage
  - Defensible - Stand Alone
  - Defensible - Prep and Hold
  - Non-Defensible - Prep and Leave
  - Non-Defensible - Rescue Drive-By
  - Unknown

