

IAP MAP Summit Trail

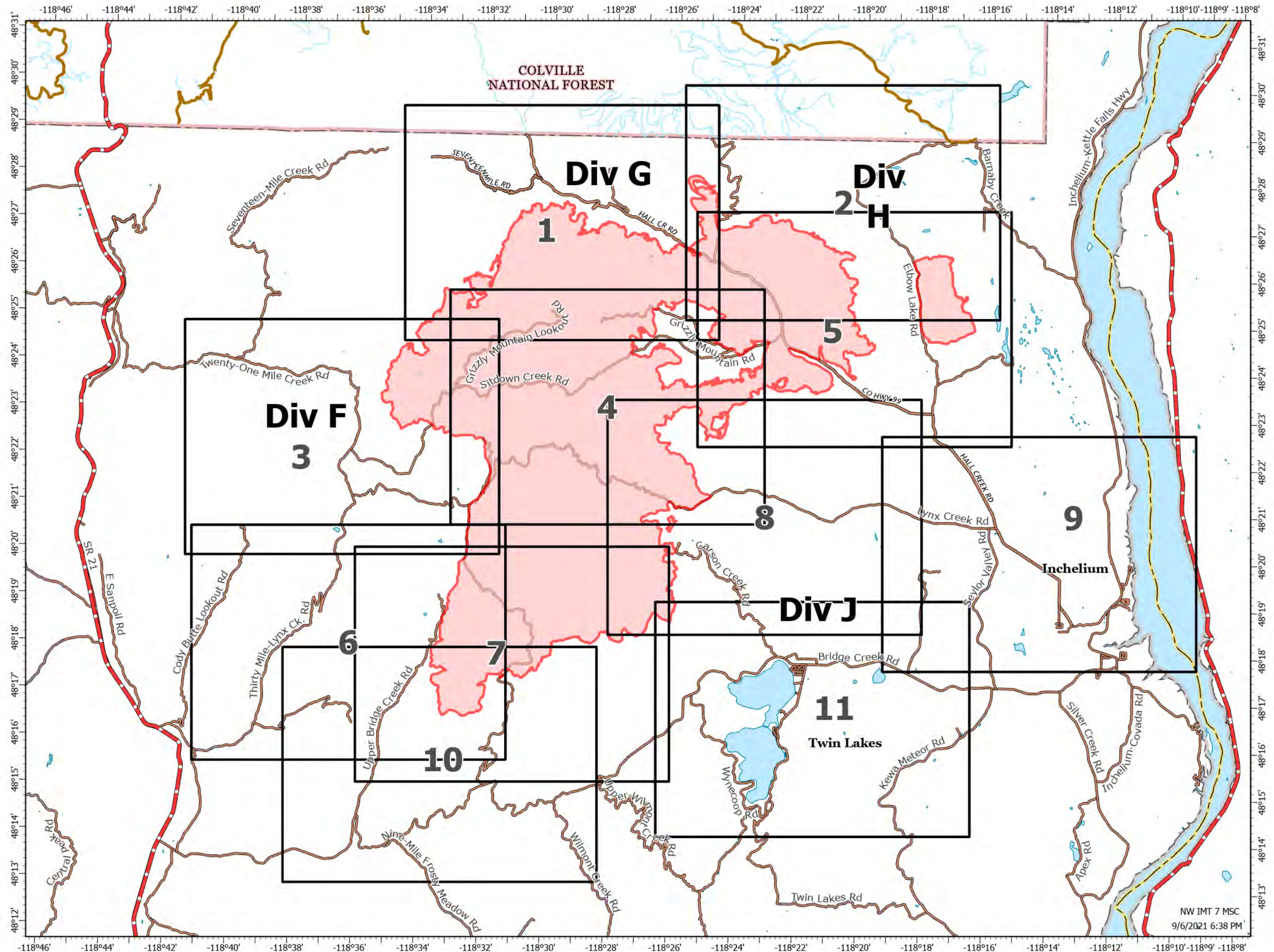
WA-COA-200087

47,391 Acres
on 09/05/2021 at 21:00

September 07, 2021



- Highway
- BIA
- County
- State
- Tribe
- Local Named Roads
- COLLECTOR
- LOCAL
- Wildfire Daily Fire Perimeter



1:140,000
NAD 1983
UTM Z 11

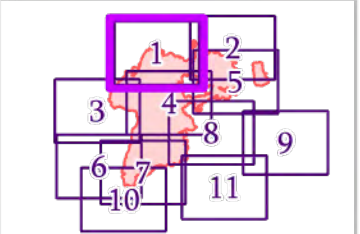
NW IMT 7 MSC
9/6/2021 6:38 PM

IAP MAP

Summit Trail Fire

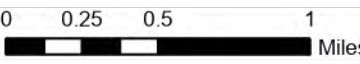
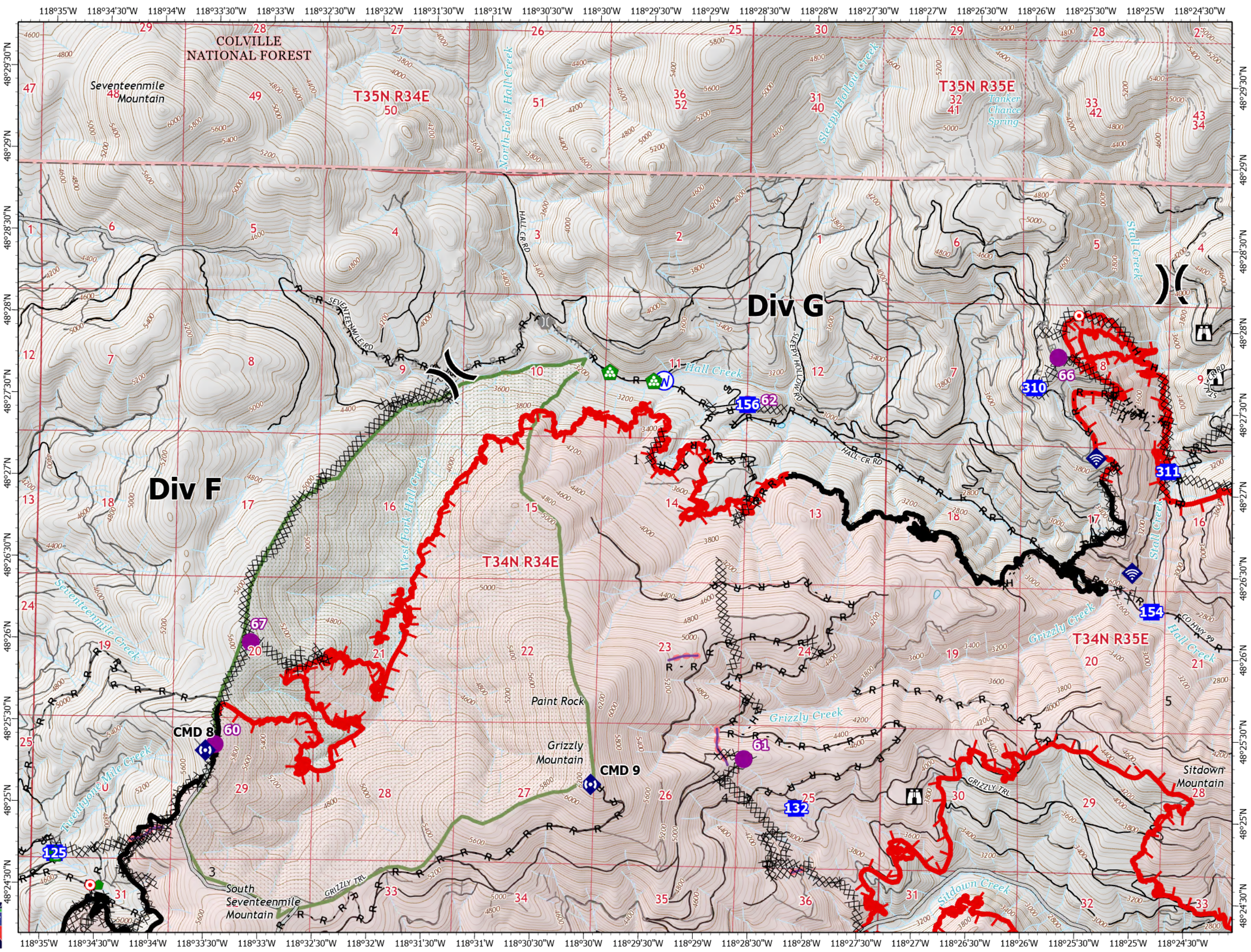
WA-COA-200087

47,391 Acres
on 09/05/2021 at 21:00
September 07, 2021



Page 01 of 11

- Helispot
- ⌋ Division Break
- Drop Point
- ⌋ Lookout
- Hot Spot - Spot Fire
- ⌋ Bridge
- Repair Point
- Landing or Log Deck
- Dozer Push
- ⌋ Internet Access
- ⌋ Repeater
- ⌋ Water Source
- ⌋ Completed Dozer Line
- ⌋ Completed Hand Line
- ⌋ Completed Road as Line
- ⌋ Planned Road as Line
- ⌋ Planned Secondary Line
- ⌋ Access or Improved Road
- ⌋ Retardant Drop
- ⌋ Fire Edge
- ⌋ Contained Line
- ⌋ Fire Perimeter
- Wilderness Area
- ⌋ Driveable
- ⌋ Not Driveable

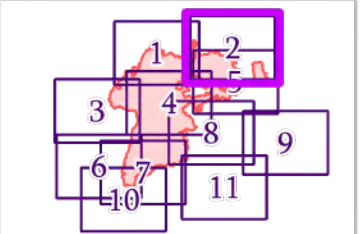


IAP MAP

Summit Trail Fire

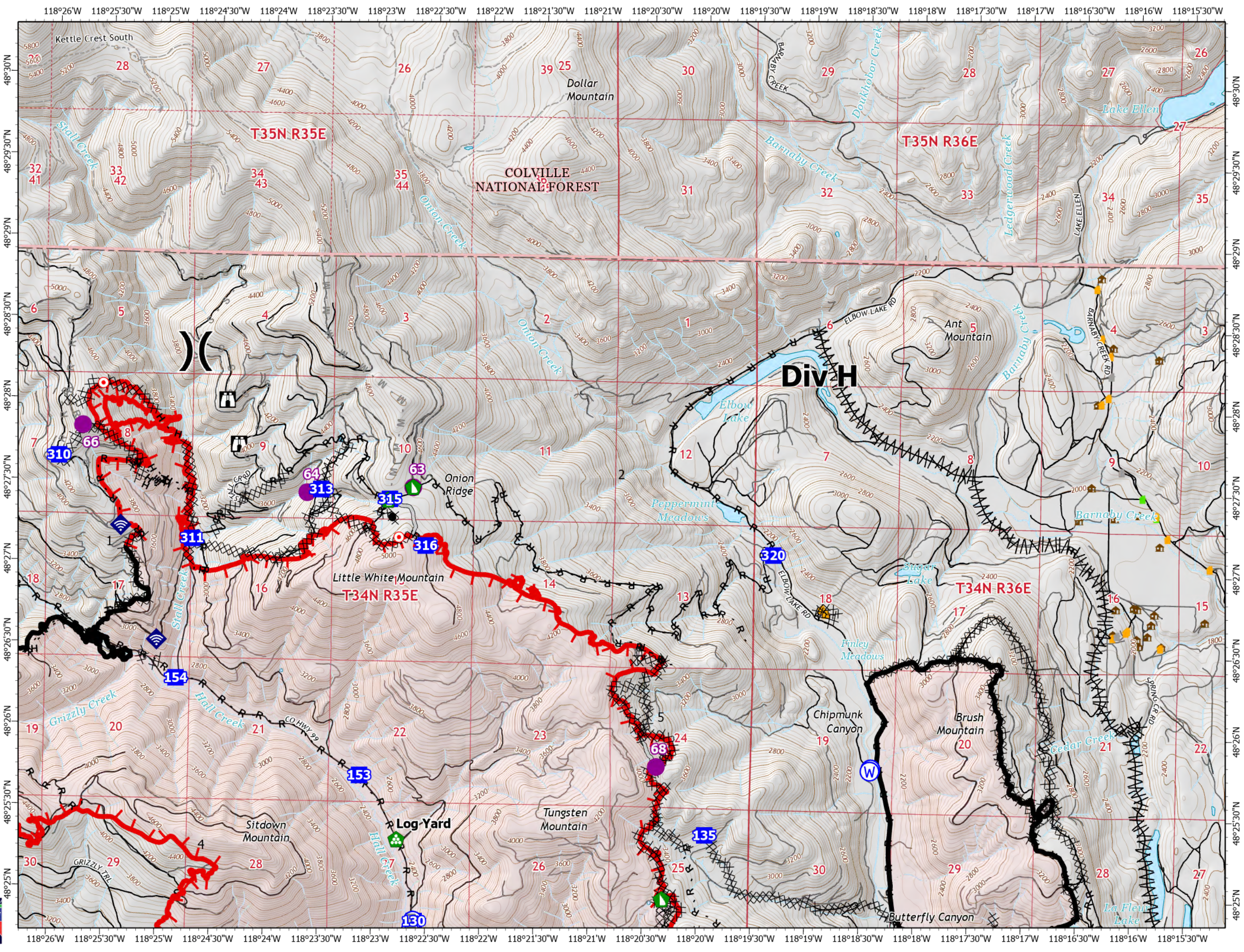
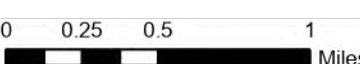
WA-COA-200087

47,391 Acres
on 09/05/2021 at 21:00
September 07, 2021



Page 02 of 11

- Helispot
- ⌋ Division Break
- Drop Point
- ⌈ Lookout
- Hot Spot - Spot Fire
- ⌈ Bridge
- ⌈ Landing or Log Deck
- ⌈ Dozer Push
- ⌈ Internet Access
- ⌈ Water Source
- ⌈ Completed Dozer Line
- ⌈ Completed Fuel Break
- H - Completed Hand Line
- R - Completed Road as Line
- M - Planned Mixed Construction Line
- R - Planned Road as Line
- S - Planned Secondary Line
- Access or Improved Road
- ⌈ Fire Edge
- ⌈ Contained Line
- ⌈ Fire Perimeter
- Trail
- Driveable
- Not Driveable
- ⌈ Structures
- ⌈ Defensible - Stand Alone
- ⌈ Defensible - Prep and Hold
- ⌈ Unknown

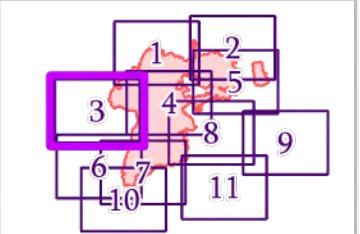


IAP MAP

Summit Trail Fire

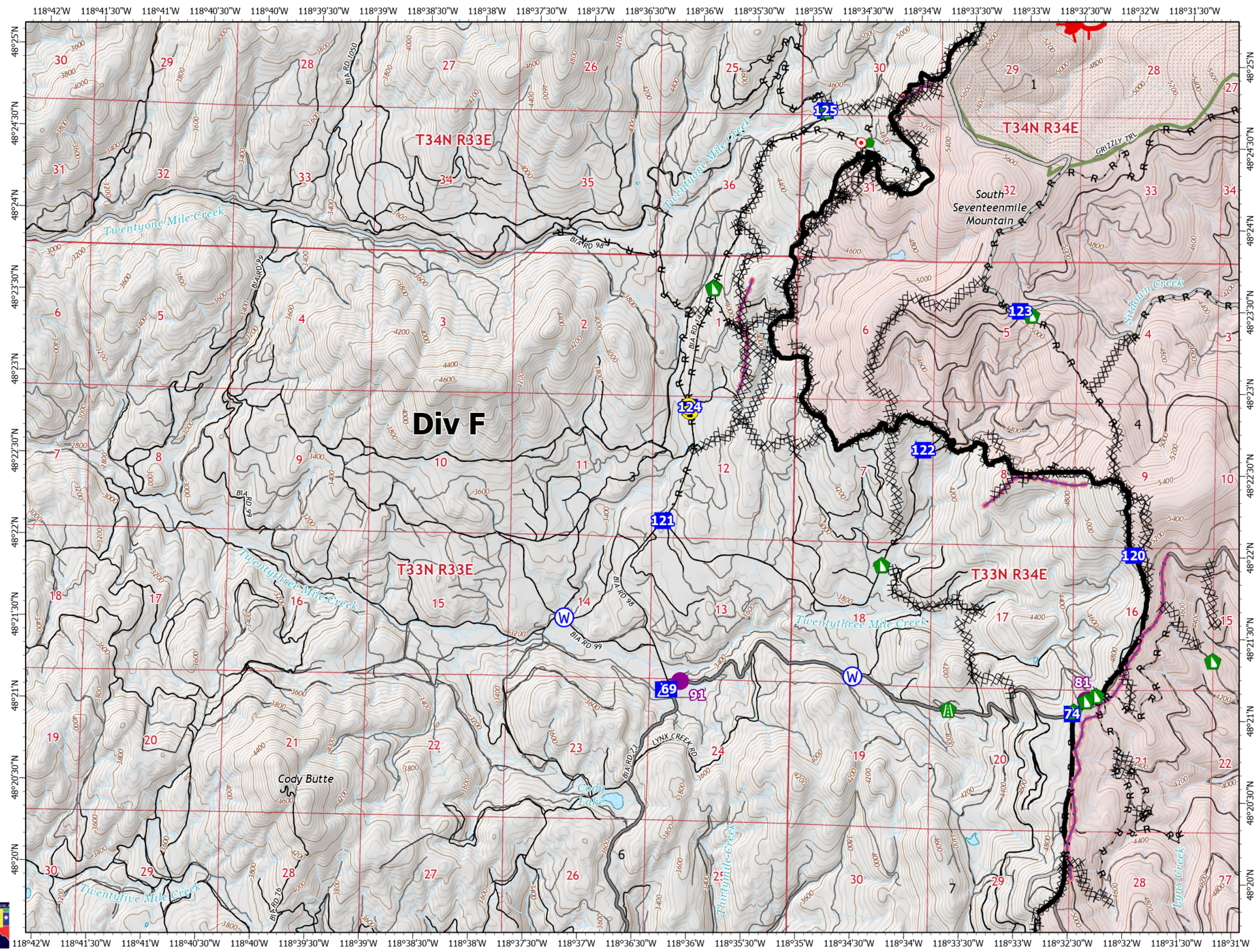
WA-COA-200087

47,391 Acres
on 09/05/2021 at 21:00
September 07, 2021



Page 03 of 11

- Helispot
- Drop Point
- ⊗ Camp
- Hot Spot - Spot Fire
- ⬆ Road Repair
- ⬆ Repair Point
- ⬆ Dozer Push
- ⬆ Repeater
- ⚠ Hazard
- Ⓜ Water Source
- ⊗ ⊗ Completed Dozer Line
- H - Completed Hand Line
- R - Completed Road as Line
- R - Planned Road as Line
- Access or Improved Road
- ⬆ Retardant Drop
- ▬ Fire Edge
- ▬ Contained Line
- ▬ Fire Perimeter
- ▬ Wilderness Area
- ▬ Driveable
- ▬ Not Driveable

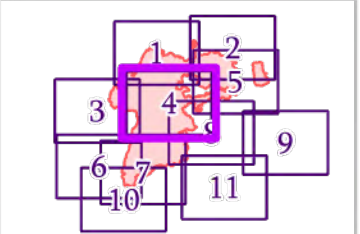


IAP MAP

Summit Trail Fire

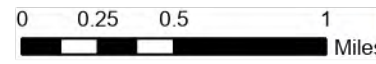
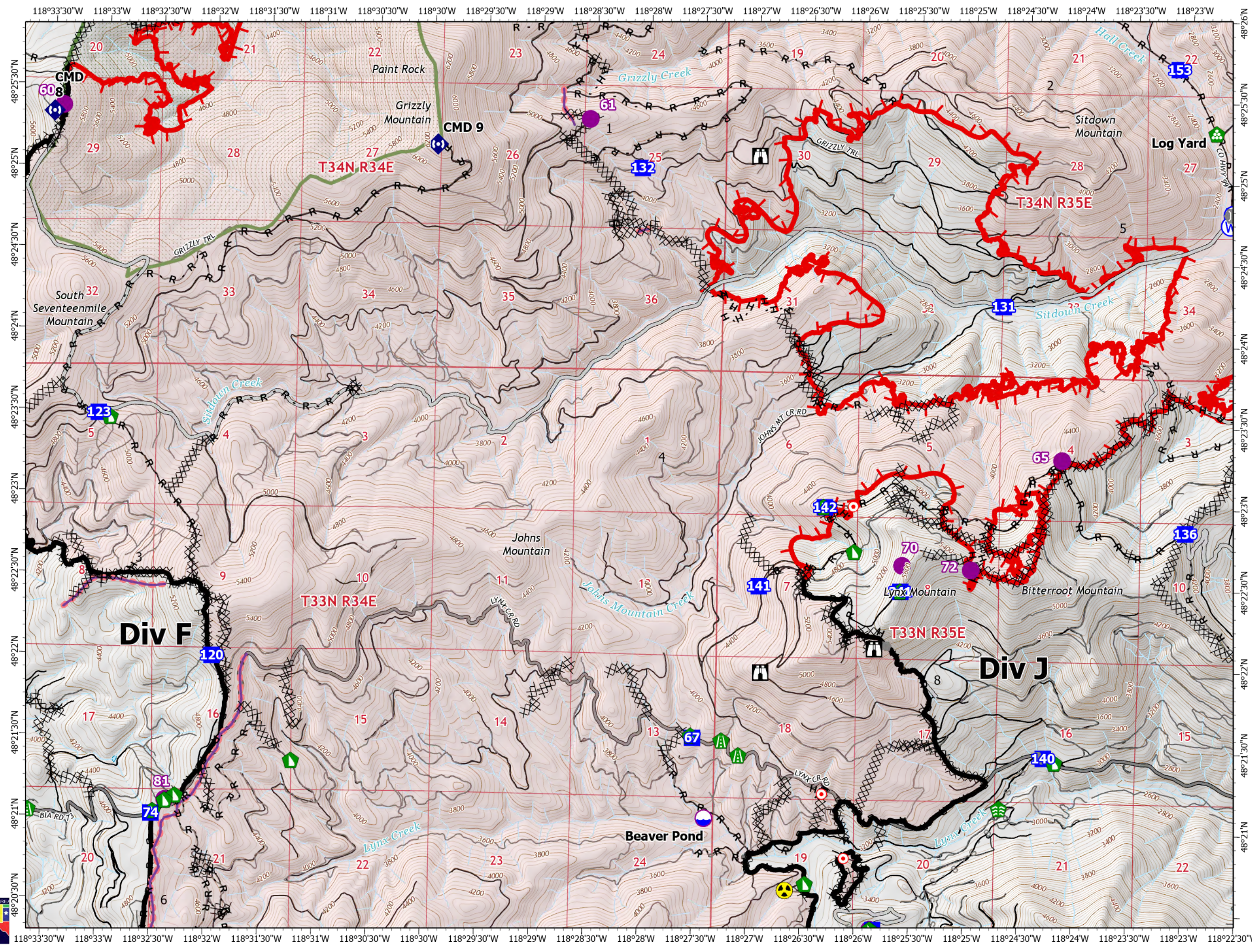
WA-COA-200087

47,391 Acres
on 09/05/2021 at 21:00
September 07, 2021



Page 04 of 11

- Dip Site
- Helispot
- Drop Point
- Lookout
- Hot Spot - Spot Fire
- Other
- Bridge
- Structure Wrap
- Stream Crossing
- Road Repair
- Landing or Log Deck
- Dozer Push
- Repeater
- Hazard
- Water Source
- Completed Dozer Line
- Completed Hand Line
- Completed Mixed Construction Line
- Completed Road as Line
- Planned Hand Line
- Planned Secondary Line
- Access or Improved Road
- Other
- Retardant Drop
- Fire Edge
- Contained Line
- Fire Perimeter
- Wilderness Area
- Driveable
- Not Driveable

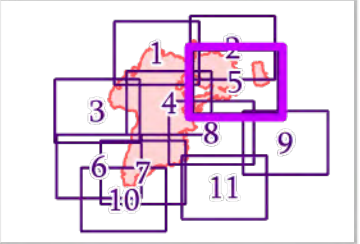


IAP MAP

Summit Trail Fire

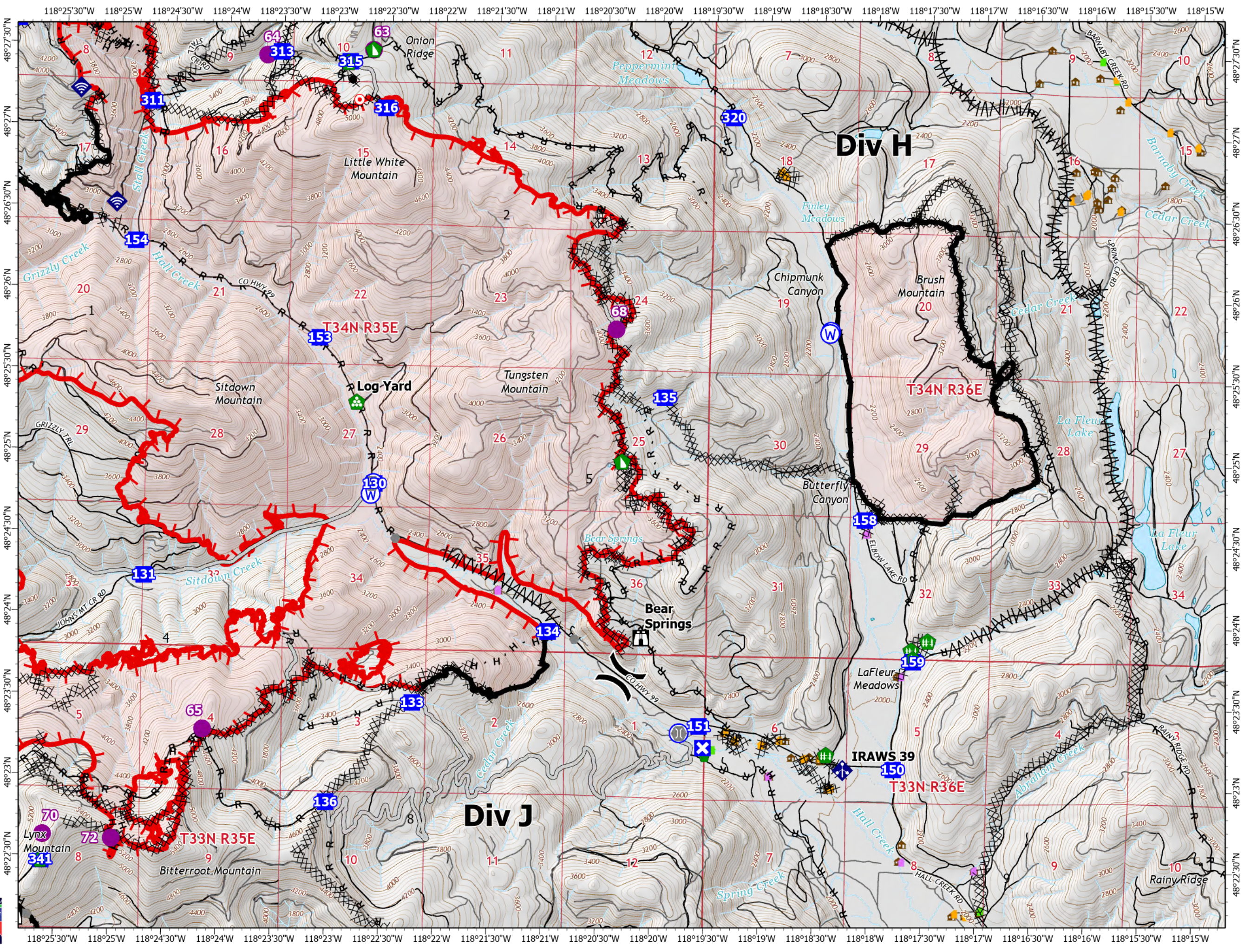
WA-COA-200087

47,391 Acres
on 09/05/2021 at 21:00
September 07, 2021



Page 05 of 11

- Helispot
- ⌘ Division Break
- Drop Point
- ✕ Closure
- ⌘ Lookout
- Hot Spot - Spot Fire
- Other
- ⌘ Bridge
- ⌘ Structure Wrap
- ⌘ Repair Point
- ⌘ Landing or Log Deck
- ⌘ Fence - Cut/Damaged
- ⌘ Dozer Push
- ⌘ Mobile Weather Unit
- ⌘ Internet Access
- ⌘ Water Source
- ⌘ Completed Dozer Line
- ⌘ Completed Fuel Break
- ⌘ Completed Hand Line
- ⌘ Completed Road as Line
- ⌘ Planned Hand Line
- ⌘ Planned Mixed Construction Line
- ⌘ Planned Road as Line
- ⌘ Planned Secondary Line
- ⌘ Access or Improved Road
- ⌘ Other
- ⌘ Fire Edge
- ⌘ Contained Line
- ⌘ Fire Perimeter
- ⌘ Driveable
- ⌘ Not Driveable
- ⌘ Structures
- ⌘ Defensible - Stand Alone
- ⌘ Defensible - Prep and Hold
- ⌘ Non-Defensible - Prep and Leave



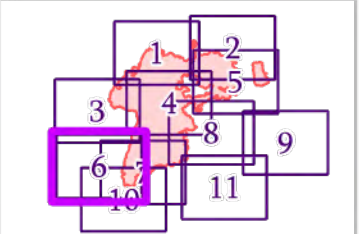
118°41'30"W 118°41'W 118°40'30"W 118°40'W 118°39'30"W 118°39'W 118°38'30"W 118°38'W 118°37'30"W 118°37'W 118°36'30"W 118°36'W 118°35'30"W 118°35'W 118°34'30"W 118°34'W 118°33'30"W 118°33'W 118°32'30"W 118°32'W 118°31'30"W 118°31'W

IAP MAP

Summit Trail Fire

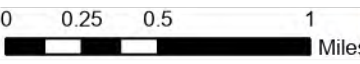
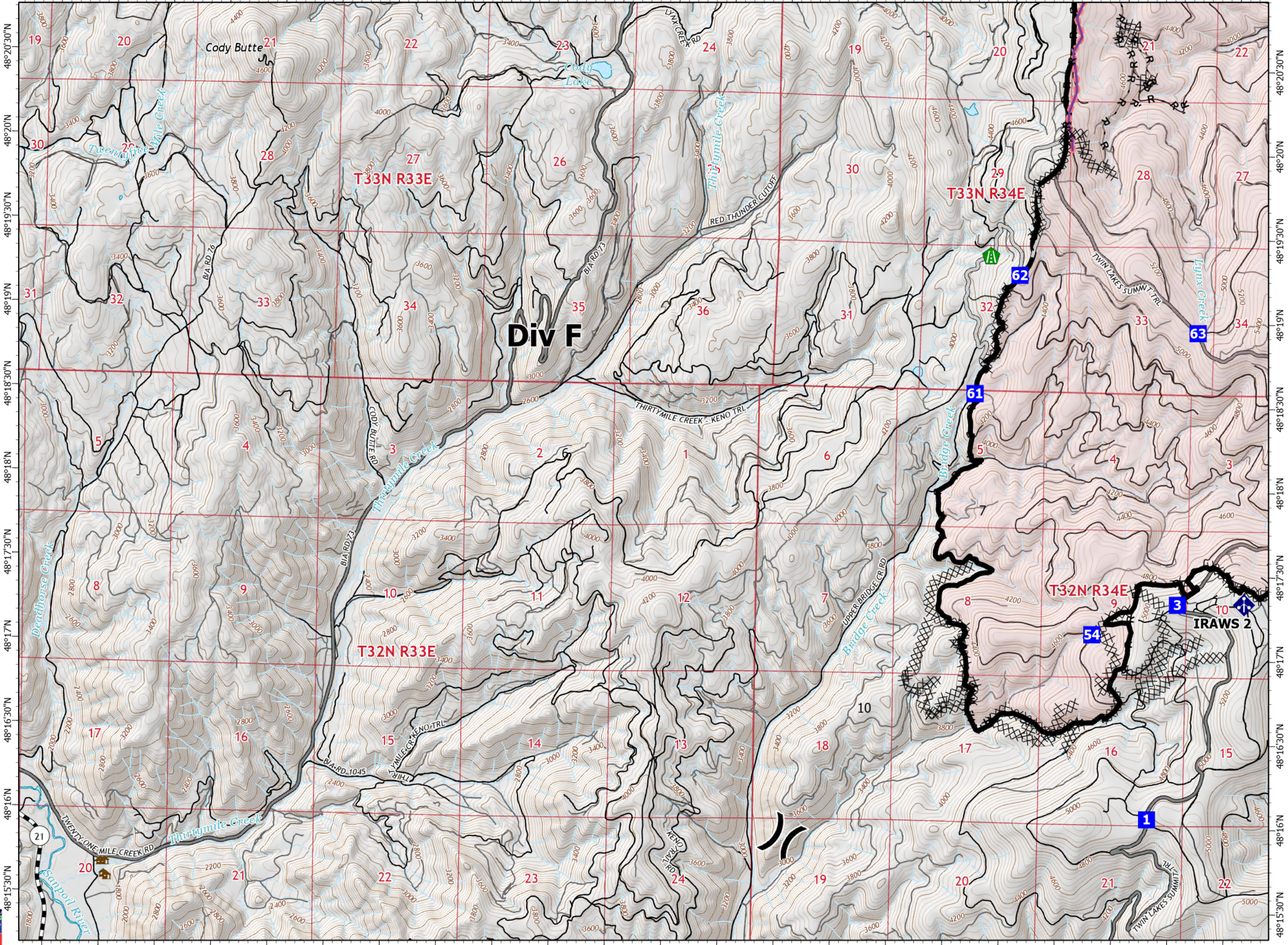
WA-COA-200087

47,391 Acres
on 09/05/2021 at 21:00
September 07, 2021



Page 06 of 11

- (X) Division Break
- Drop Point
- ▲ Road Repair
- ▲ Dozer Push
- ◆ Mobile Weather Unit
- XX Completed Dozer Line
- H Completed Hand Line
- R Completed Road as Line
- Access or Improved Road
- Retardant Drop
- Contained Line
- ▭ Fire Perimeter
- Driveable
- Not Driveable
- 🏠 Structures



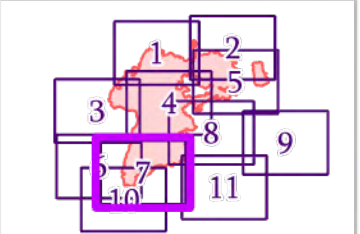
118°41'30"W 118°41'W 118°40'30"W 118°40'W 118°39'30"W 118°39'W 118°38'30"W 118°38'W 118°37'30"W 118°37'W 118°36'30"W 118°36'W 118°35'30"W 118°35'W 118°34'30"W 118°34'W 118°33'30"W 118°33'W 118°32'30"W 118°32'W 118°31'30"W 118°31'W

IAP MAP

Summit Trail Fire

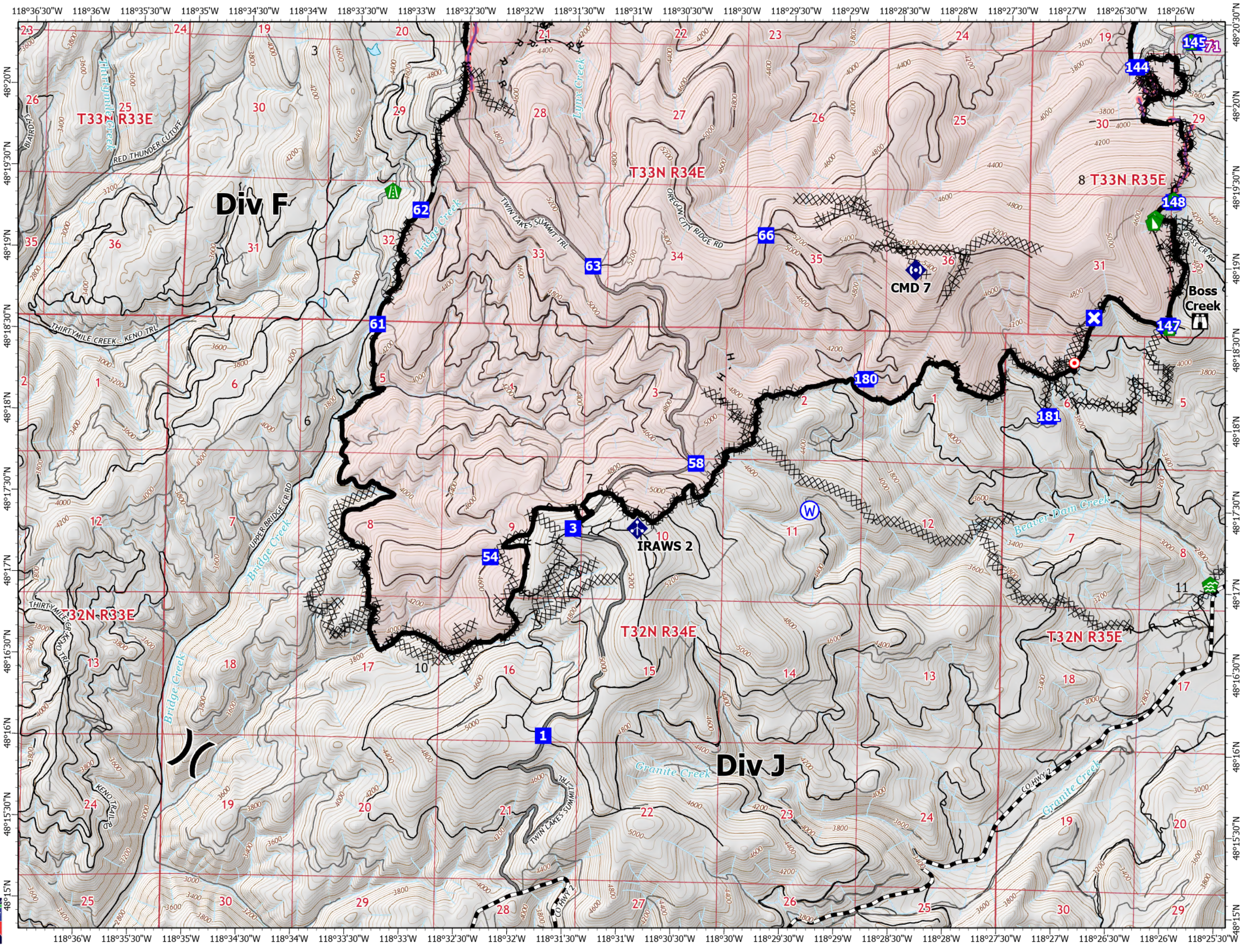
WA-COA-200087

47,391 Acres
on 09/05/2021 at 21:00
September 07, 2021



Page 07 of 11

- Helispot
- Division Break
- Drop Point
- Closure
- Lookout
- Hot Spot - Spot Fire
- Water Development or Draft Site
- Road Repair
- Dozer Push
- Mobile Weather Unit
- Repeater
- Hazard
- Water Source
- Completed Dozer Line
- Completed Hand Line
- Completed Road as Line
- Planned Secondary Line
- Access or Improved Road
- Retardant Drop
- Contained Line
- Fire Perimeter
- Driveable
- Not Driveable

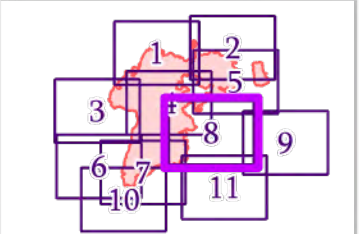


IAP MAP

Summit Trail Fire

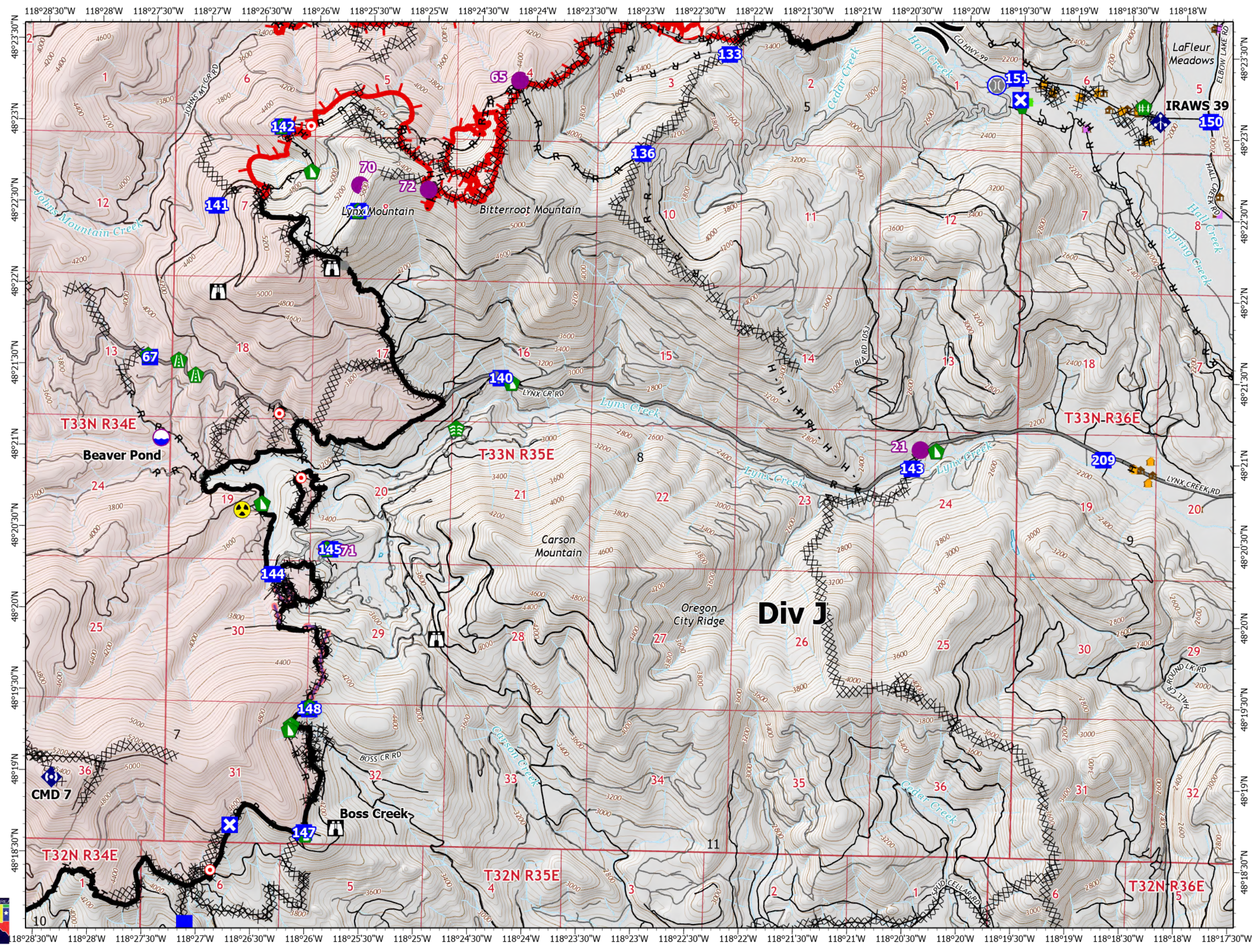
WA-COA-200087

47,391 Acres
on 09/05/2021 at 21:00
September 07, 2021



Page 08 of 11

- Dip Site
- Helispot
- Division Break
- Drop Point
- Closure
- Lookout
- Hot Spot - Spot Fire
- Other
- Bridge
- Structure Wrap
- Stream Crossing
- Road Repair
- Repair Point
- Fence - Cut/Damaged
- Dozer Push
- Mobile Weather Unit
- Repeater
- Hazard
- Water Source
- Completed Dozer Line
- Completed Hand Line
- Completed Mixed Construction Line
- Completed Road as Line
- Planned Hand Line
- Planned Secondary Line
- Access or Improved Road
- Other
- Retardant Drop
- Fire Edge
- Contained Line
- Fire Perimeter
- Driveable
- Not Driveable
- Structures
- Defensible - Stand Alone
- Defensible - Prep and Hold 1

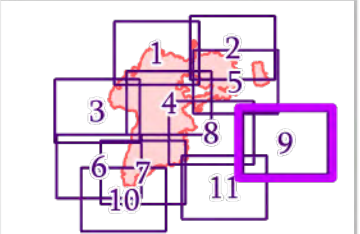


IAP MAP








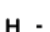
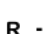








Summit Trail Fire

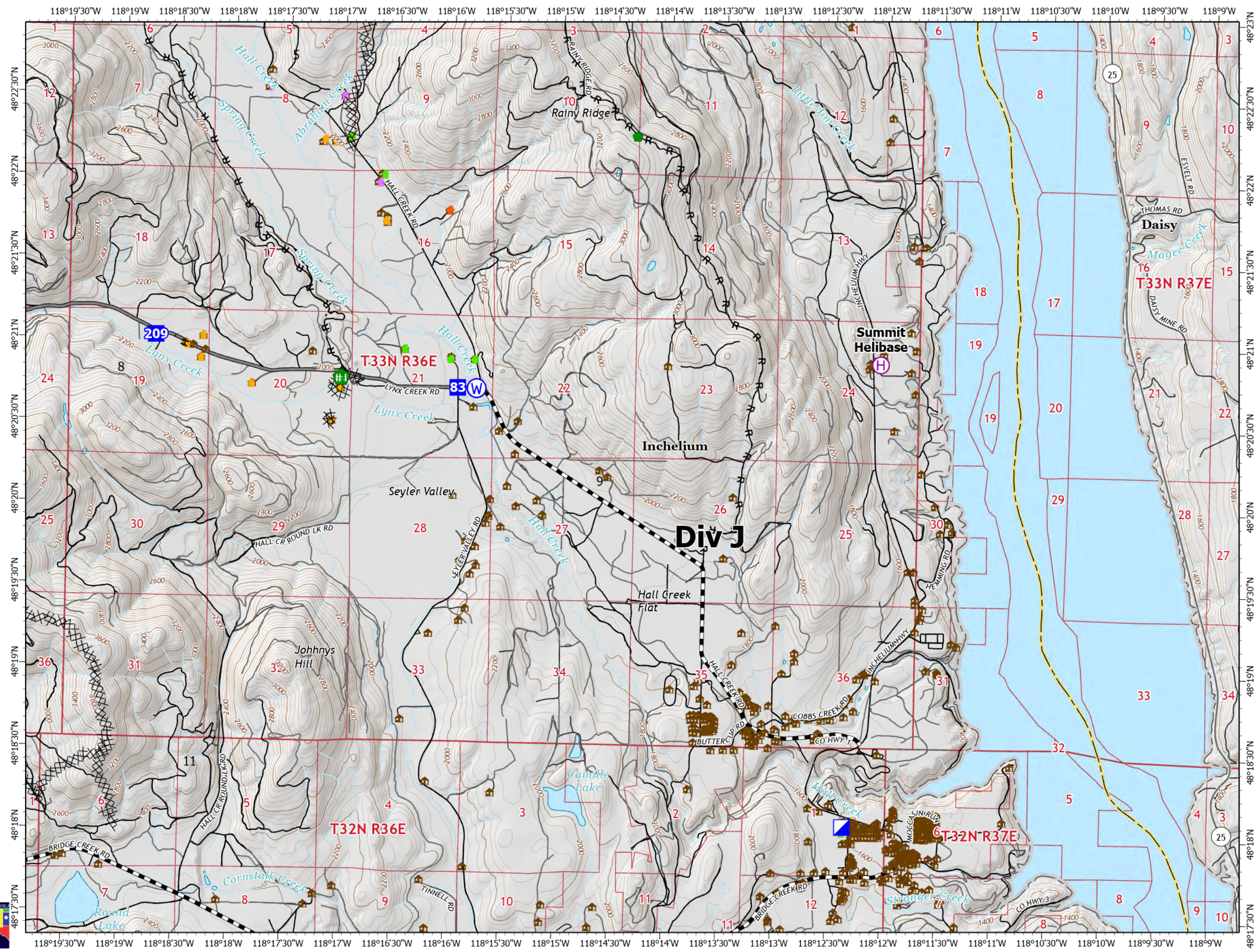
WA-COA-200087

47,391 Acres
on 09/05/2021 at 21:00
September 07, 2021



Page 09 of 11

-  Helibase
-  Incident Command Post
-  Drop Point
-  Repair Point
-  Fence - Cut/Damaged
-  Water Source
-  Completed Dozer Line
-  Completed Hand Line
-  Completed Road as Line
-  Other
-  Driveable
-  Not Driveable
-  Structures
-  Defensible - Stand Alone
-  Defensible - Prep and Hold
-  Non-Defensible - Prep and Leave
-  Non-Defensible - Rescue Drive-By



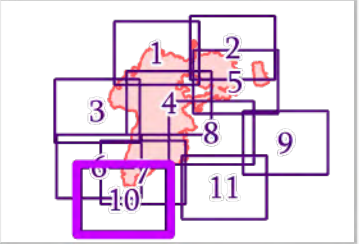
118°38'30"W 118°38'W 118°37'30"W 118°37'W 118°36'30"W 118°36'W 118°35'30"W 118°35'W 118°34'30"W 118°34'W 118°33'30"W 118°33'W 118°32'30"W 118°32'W 118°31'30"W 118°31'W 118°30'30"W 118°30'W 118°29'30"W 118°29'W 118°28'30"W 118°28'W

IAP MAP

Summit Trail Fire

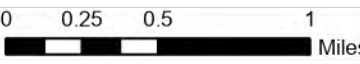
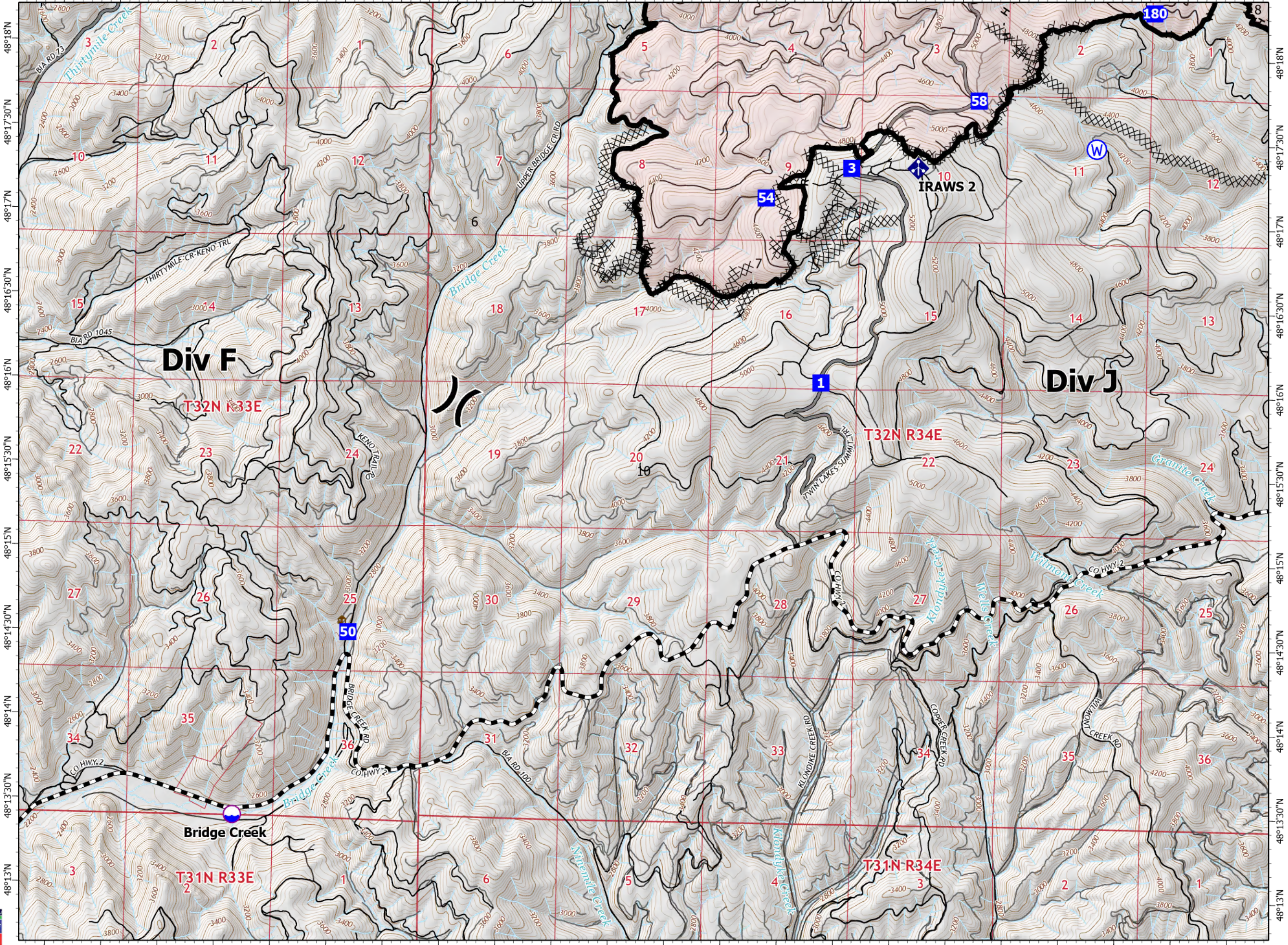
WA-COA-200087

47,391 Acres
on 09/05/2021 at 21:00
September 07, 2021



Page 10 of 11

- Dip Site
- Division Break
- Drop Point
- Mobile Weather Unit
- Water Source
- Completed Dozer Line
- Completed Hand Line
- Completed Road as Line
- Contained Line
- Fire Perimeter
- Driveable
- Not Driveable
- Structures



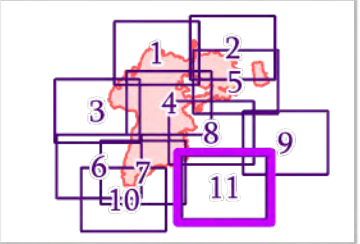
118°38'30"W 118°38'W 118°37'30"W 118°37'W 118°36'30"W 118°36'W 118°35'30"W 118°35'W 118°34'30"W 118°34'W 118°33'30"W 118°33'W 118°32'30"W 118°32'W 118°31'30"W 118°31'W 118°30'30"W 118°30'W 118°29'30"W 118°29'W 118°28'30"W 118°28'W

IAP MAP

Summit Trail Fire

WA-COA-200087

47,391 Acres
on 09/05/2021 at 21:00
September 07, 2021



Page 11 of 11

- Dip Site
- Drop Point
- Closure
- Lookout
- Hot Spot - Spot Fire
- Other
- Water Development or Draft Site
- Dozer Push
- Water Source
- Completed Dozer Line
- Completed Hand Line
- Completed Mixed Construction Line
- Completed Road as Line
- Planned Mixed Construction Line
- Other
- Contained Line
- Fire Perimeter
- Driveable
- Not Driveable
- Structures

