

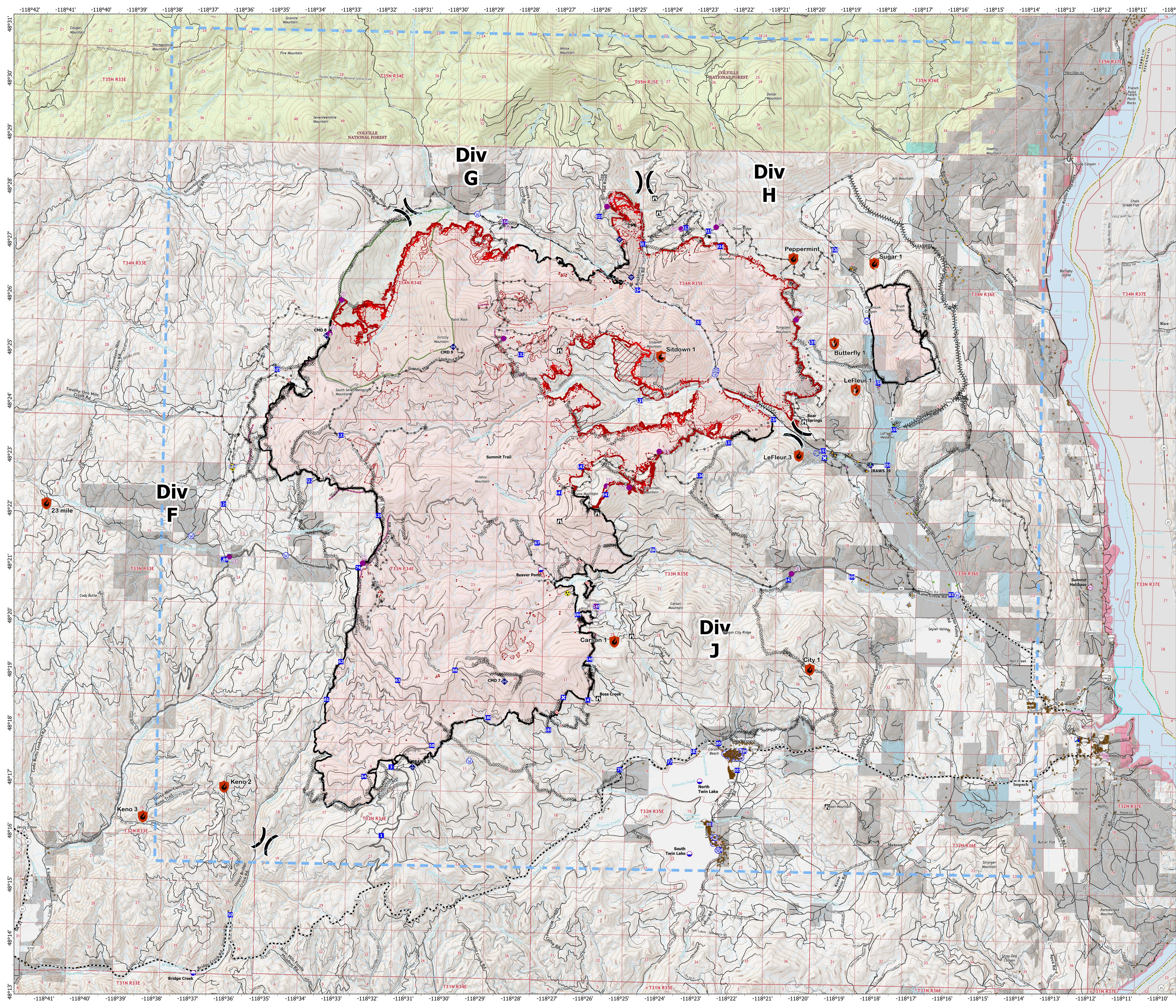
Ops IR MAP

Summit Trail Fire

WA-COA-200087

48,092 Acres on 09/06/2021 at 21:26

September 07, 2021



- New Starts**
- Out
 - Dip Site
 - Helispot
 - Helibase
 - Division Break
 - Incident Command Post
 - Drop Point
 - Closure
 - Camp
 - Lookout
 - Hot Spot - Spot Fire
 - Comm Tower
 - Bridge
 - Mobile Weather Unit
 - Internet Access
 - Repeater
 - Hazard
 - Water Source
 - Completed Dozer Line
 - Completed Fuel Break
 - Completed Hand Line
 - Completed Mixed Construction Line
 - Planned Hand Line
 - Planned Mixed Construction Line
 - Planned Road as Line
 - Planned Secondary Line
 - Access or Improved Road
 - Other
 - Retardant Drop
 - Fire Edge
 - Contained Line
 - Wildfire Daily Fire Perimeter
 - Main Route - Improved
 - Main Route - Unimproved
 - Local Road
 - 4WD
 - Trail
 - Not Driveable
 - Wilderness Area
 - Private
 - Colville Confederated Tribes
 - Ferry County
 - Indian Allotment Trust Lands
 - National Park Service
 - Open water and lakes
 - US Bureau of Reclamation
 - US Forest Service
 - WA DNR
 - Structures
 - ForestServiceRoadsOpen
 - Census_Road for Labeling Only
 - CTCR Road Shields
 - IR Isolated Heat Sources
 - IR Possible Isolated Heat Sources
 - IR Intense Heat
 - IR Scattered Heat
 - IR Heat Perimeter
- Structure Triage**
- Defensible - Stand Alone
 - Defensible - Prep and Hold
 - Non-Defensible - Prep and Leave
 - Non-Defensible - Rescue Drive-By
 - Unknown

