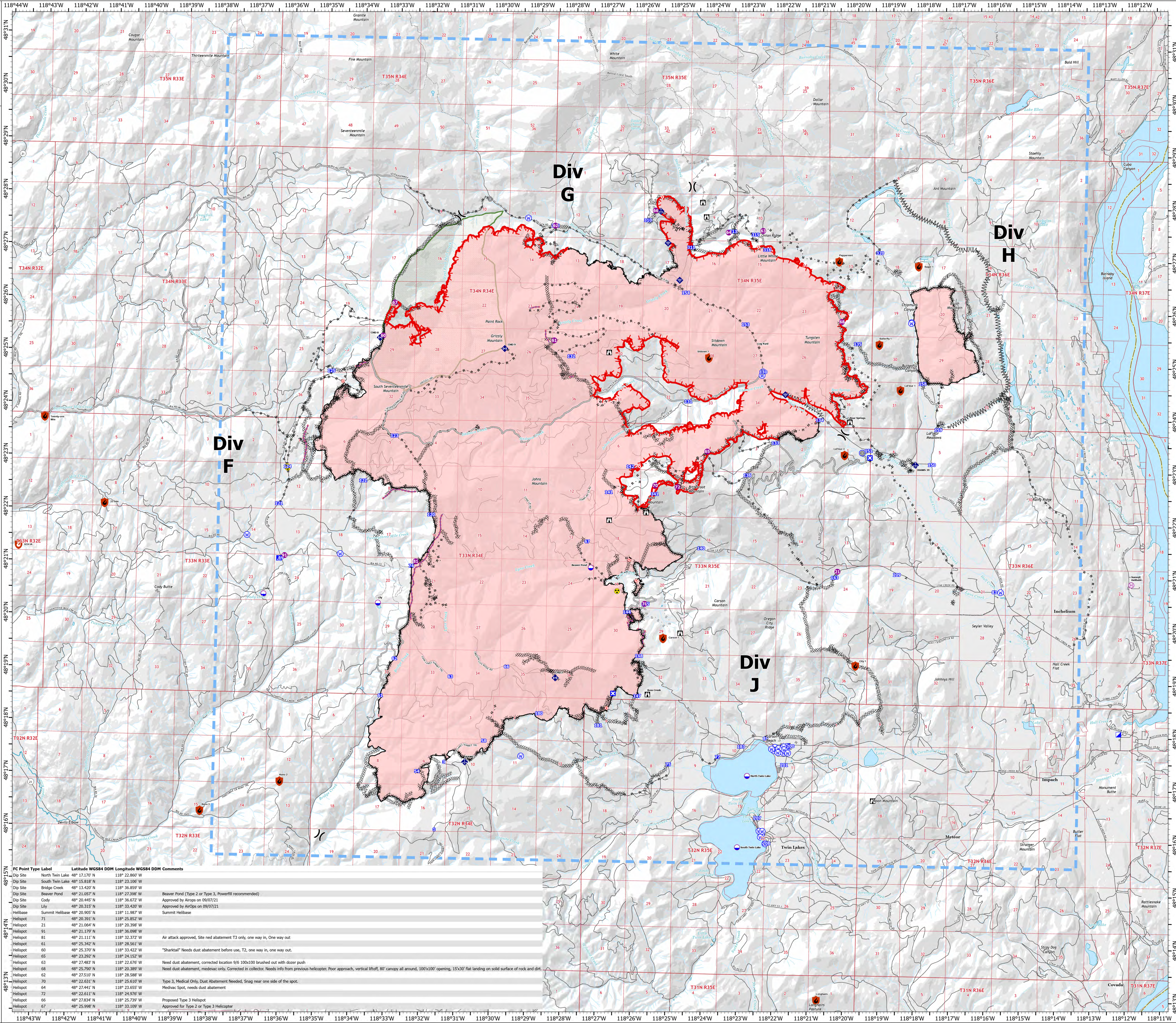


AIR OPS

Summit Trail Fire
WA-COA-200087

September 08, 2021
48,092 acres at 09/06/2021 at 21:26

- Contained
- Out
- Dip Site
- Helispot
- Helibase
- Division Break
- Incident Command Post
- Drop Point
- Closure
- Camp
- Lookout
- Hot Spot - Spot Fire
- Other
- Bridge
- Mobile Weather Unit
- Internet Access
- Repeater
- Hazard
- Water Source
- Completed Dozer Line
- Completed Fuel Break
- Completed Hand Line
- Completed Mixed Construction Line
- Completed Road as Line
- Planned Hand Line
- Planned Mixed Construction Line
- Planned Road as Line
- Planned Secondary Line
- Access or Improved Road
- Other
- Retardant Drop
- Temporary Flight Restriction
- Fire Edge
- Contained Line
- Wildfire Daily Fire Perimeter
- Wilderness Area
- Trail
- Runway



FC Point Type Label	Latitude WGS84 DDM	Longitude WGS84 DDM	Comments	
Dip Site	North Twin Lake 48° 17.170' N	118° 22.860' W		
Dip Site	South Twin Lake 48° 15.818' N	118° 23.106' W		
Dip Site	Bridge Creek 48° 13.420' N	118° 36.859' W		
Dip Site	Beaver Pond 48° 21.057' N	118° 27.996' W	Beaver Pond (Type 2 or Type 3, Powerlift recommended)	
Dip Site	Cody 48° 20.445' N	118° 36.672' W	Approved by AirOps on 09/07/21	
Dip Site	Lily 48° 20.315' N	118° 33.420' W	Approved by AirOps on 09/07/21	
Helibase	Summit Helibase 48° 20.905' N	118° 11.987' W	Summit Helibase	
Helispot	71	48° 20.391' N	118° 25.852' W	
Helispot	71	48° 21.064' N	118° 20.398' W	
Helispot	91	48° 21.179' N	118° 36.098' W	
Helispot	81	48° 21.111' N	118° 32.372' W	Air attack approved, Site ned abatement T3 only, one way in, One way out.
Helispot	61	48° 25.342' N	118° 28.561' W	"Sharktail" Needs dust abatement before use, T2, one way in, one way out.
Helispot	60	48° 25.370' N	118° 33.422' W	
Helispot	65	48° 23.292' N	118° 24.152' W	
Helispot	63	48° 27.483' N	118° 22.676' W	Need dust abatement, corrected location 9/6 100x100 brushed out with dozer push
Helispot	68	48° 25.790' N	118° 20.389' W	Need dust abatement, medevac only, Corrected in collector. Needs info from previous helispot. Poor approach, vertical liftoff, 80' canopy all around, 100x100' opening, 15x30' flat landing on solid surface of rock and dirt.
Helispot	62	48° 27.510' N	118° 28.588' W	
Helispot	70	48° 22.631' N	118° 25.610' W	Type 3, Medical Only, Dust Abatement Needed, Snag near one side of the spot.
Helispot	64	48° 27.441' N	118° 23.655' W	Medivac Spot, needs dust abatement
Helispot	72	48° 22.611' N	118° 24.976' W	
Helispot	66	48° 27.834' N	118° 25.739' W	Proposed Type 3 Helispot
Helispot	67	48° 25.998' N	118° 33.109' W	Approved for Type 2 or Type 3 Helicopter

Miles 0 1 2
Kilometers 0 1 2

SOUTHWEST AREA
INCIDENT MANAGEMENT TEAM 4

1:400,000 - NW IMT 7 MSC - 9/7/2021 21:25
North American 1927 Datum, LatLong Grid