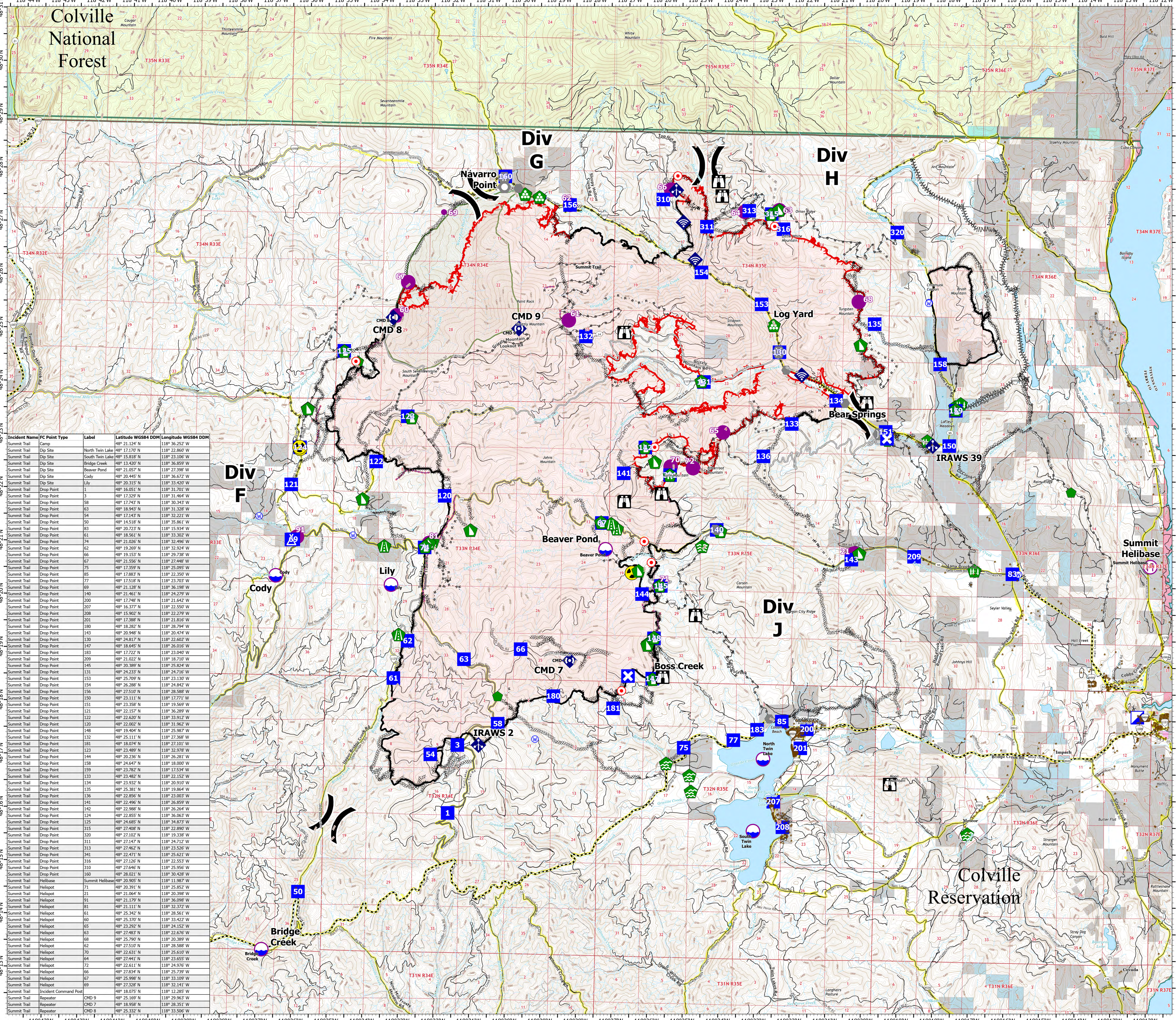


COMM MEDICAL

Summit Trail Fire
WA-COA-200087
September 09, 2021
48,457 acres on 09/07/2021 at 1840

- Structures
- Dip Site
- Hellspot
- Hellbase
- Division Break
- Incident Command Post
- Drop Point
- Closure
- Camp
- Lookout
- Hot Spot - Spot Fire
- Other
- Landmark
- Bridge
- Water Development or Draft Site
- Structure Wrap
- Stream Crossing
- Road Repair
- Repair Point
- Landing or Log Deck
- Fence - Cut/ Damaged
- Dozer Push
- Mobile Weather Unit
- Internet Access
- Repeater
- Hazard
- Water Source
- Dip Site
- Hellspot
- Hellbase
- Incident Command Post
- Drop Point
- Camp
- Repeater
- Completed Dozer Line
- Completed Fuel Break
- Completed Hand Line
- Completed Mixed Construction Line
- Completed Road as Line
- Planned Hand Line
- Planned Mixed Construction Line
- Planned Road as Line
- Planned Secondary Line
- Access or Improved Road
- Other
- Retardant Drop
- Fire Edge
- Contained Line
- Wildfire Daily Fire Perimeter
- Main Roads
- County or Equivalent
- Colville National Forest
- Wilderness Area
- Private
- Colville Confederated Tribes
- Indian Allotment Trust Lands
- Open water and lakes
- US Bureau of Reclamation
- US Forest Service
- WA DNR



Incident Name	FC Point Type	Label	Latitude WGS84 DDM	Longitude WGS84 DDM
Summit Trail	Camp	North Twin Lake	48° 21.124' N	118° 36.252' W
Summit Trail	Dip Site	South Twin Lake	48° 15.818' N	118° 23.106' W
Summit Trail	Dip Site	Bridge Creek	48° 13.507' N	118° 36.559' W
Summit Trail	Dip Site	Beaver Pond	48° 21.057' N	118° 27.398' W
Summit Trail	Dip Site	Cody	48° 20.445' N	118° 36.672' W
Summit Trail	Dip Site	Lily	48° 20.315' N	118° 33.420' W
Summit Trail	Drop Point	1	48° 16.051' N	118° 31.701' W
Summit Trail	Drop Point	2	48° 17.329' N	118° 31.464' W
Summit Trail	Drop Point	3	48° 17.742' N	118° 30.243' W
Summit Trail	Drop Point	4	48° 18.943' N	118° 31.328' W
Summit Trail	Drop Point	5	48° 17.143' N	118° 32.221' W
Summit Trail	Drop Point	6	48° 14.518' N	118° 35.861' W
Summit Trail	Drop Point	7	48° 20.723' N	118° 15.934' W
Summit Trail	Drop Point	8	48° 18.561' N	118° 33.302' W
Summit Trail	Drop Point	9	48° 17.283' N	118° 22.350' W
Summit Trail	Drop Point	10	48° 17.231' N	118° 32.496' W
Summit Trail	Drop Point	11	48° 21.138' N	118° 36.198' W
Summit Trail	Drop Point	12	48° 21.461' N	118° 24.279' W
Summit Trail	Drop Point	13	48° 17.748' N	118° 21.642' W
Summit Trail	Drop Point	14	48° 16.377' N	118° 22.550' W
Summit Trail	Drop Point	15	48° 15.902' N	118° 22.279' W
Summit Trail	Drop Point	16	48° 17.384' N	118° 21.010' W
Summit Trail	Drop Point	17	48° 18.282' N	118° 28.794' W
Summit Trail	Drop Point	18	48° 20.948' N	118° 20.474' W
Summit Trail	Drop Point	19	48° 24.817' N	118° 22.602' W
Summit Trail	Drop Point	20	48° 18.645' N	118° 26.016' W
Summit Trail	Drop Point	21	48° 17.722' N	118° 23.049' W
Summit Trail	Drop Point	22	48° 21.022' N	118° 18.710' W
Summit Trail	Drop Point	23	48° 20.389' N	118° 25.824' W
Summit Trail	Drop Point	24	48° 24.233' N	118° 24.716' W
Summit Trail	Drop Point	25	48° 25.709' N	118° 23.130' W
Summit Trail	Drop Point	26	48° 26.288' N	118° 24.842' W
Summit Trail	Drop Point	27	48° 27.507' N	118° 25.388' W
Summit Trail	Drop Point	28	48° 23.111' N	118° 17.771' W
Summit Trail	Drop Point	29	48° 23.358' N	118° 19.569' W
Summit Trail	Drop Point	30	48° 22.157' N	118° 36.289' W
Summit Trail	Drop Point	31	48° 22.620' N	118° 33.912' W
Summit Trail	Drop Point	32	48° 22.002' N	118° 31.962' W
Summit Trail	Drop Point	33	48° 19.944' N	118° 25.387' W
Summit Trail	Drop Point	34	48° 25.111' N	118° 27.368' W
Summit Trail	Drop Point	35	48° 18.074' N	118° 27.101' W
Summit Trail	Drop Point	36	48° 23.489' N	118° 32.978' W
Summit Trail	Drop Point	37	48° 20.236' N	118° 26.281' W
Summit Trail	Drop Point	38	48° 24.647' N	118° 18.000' W
Summit Trail	Drop Point	39	48° 23.792' N	118° 17.534' W
Summit Trail	Drop Point	40	48° 23.482' N	118° 22.152' W
Summit Trail	Drop Point	41	48° 23.932' N	118° 20.910' W
Summit Trail	Drop Point	42	48° 25.381' N	118° 19.864' W
Summit Trail	Drop Point	43	48° 22.856' N	118° 23.003' W
Summit Trail	Drop Point	44	48° 22.496' N	118° 26.859' W
Summit Trail	Drop Point	45	48° 22.988' N	118° 26.544' W
Summit Trail	Drop Point	46	48° 22.855' N	118° 36.063' W
Summit Trail	Drop Point	47	48° 24.685' N	118° 34.873' W
Summit Trail	Drop Point	48	48° 27.408' N	118° 22.890' W
Summit Trail	Drop Point	49	48° 27.102' N	118° 19.338' W
Summit Trail	Drop Point	50	48° 27.147' N	118° 24.712' W
Summit Trail	Drop Point	51	48° 27.462' N	118° 23.266' W
Summit Trail	Drop Point	52	48° 22.471' N	118° 25.621' W
Summit Trail	Drop Point	53	48° 27.126' N	118° 22.553' W
Summit Trail	Drop Point	54	48° 27.646' N	118° 25.956' W
Summit Trail	Drop Point	55	48° 28.021' N	118° 30.428' W
Summit Trail	Hellbase	Summit Hellbase	48° 20.905' N	118° 11.987' W
Summit Trail	Hellspot	21	48° 21.064' N	118° 25.352' W
Summit Trail	Hellspot	22	48° 21.064' N	118° 20.398' W
Summit Trail	Hellspot	91	48° 21.179' N	118° 36.098' W
Summit Trail	Hellspot	81	48° 21.111' N	118° 32.372' W
Summit Trail	Hellspot	61	48° 25.342' N	118° 28.561' W
Summit Trail	Hellspot	60	48° 25.370' N	118° 33.422' W
Summit Trail	Hellspot	65	48° 23.202' N	118° 24.152' W
Summit Trail	Hellspot	63	48° 27.483' N	118° 22.676' W
Summit Trail	Hellspot	68	48° 25.790' N	118° 20.389' W
Summit Trail	Hellspot	62	48° 27.510' N	118° 28.588' W
Summit Trail	Hellspot	70	48° 22.631' N	118° 25.610' W
Summit Trail	Hellspot	64	48° 27.441' N	118° 23.655' W
Summit Trail	Hellspot	72	48° 23.611' N	118° 24.676' W
Summit Trail	Hellspot	66	48° 27.834' N	118° 25.739' W
Summit Trail	Hellspot	67	48° 25.998' N	118° 33.109' W
Summit Trail	Hellspot	69	48° 27.328' N	118° 32.141' W
Summit Trail	Incident Command Post		48° 18.075' N	118° 12.285' W
Summit Trail	Repeater	CMD 9	48° 25.169' N	118° 29.963' W
Summit Trail	Repeater	CMD 7	48° 18.568' N	118° 28.558' W
Summit Trail	Repeater	CMD 8	48° 25.332' N	118° 33.506' W

