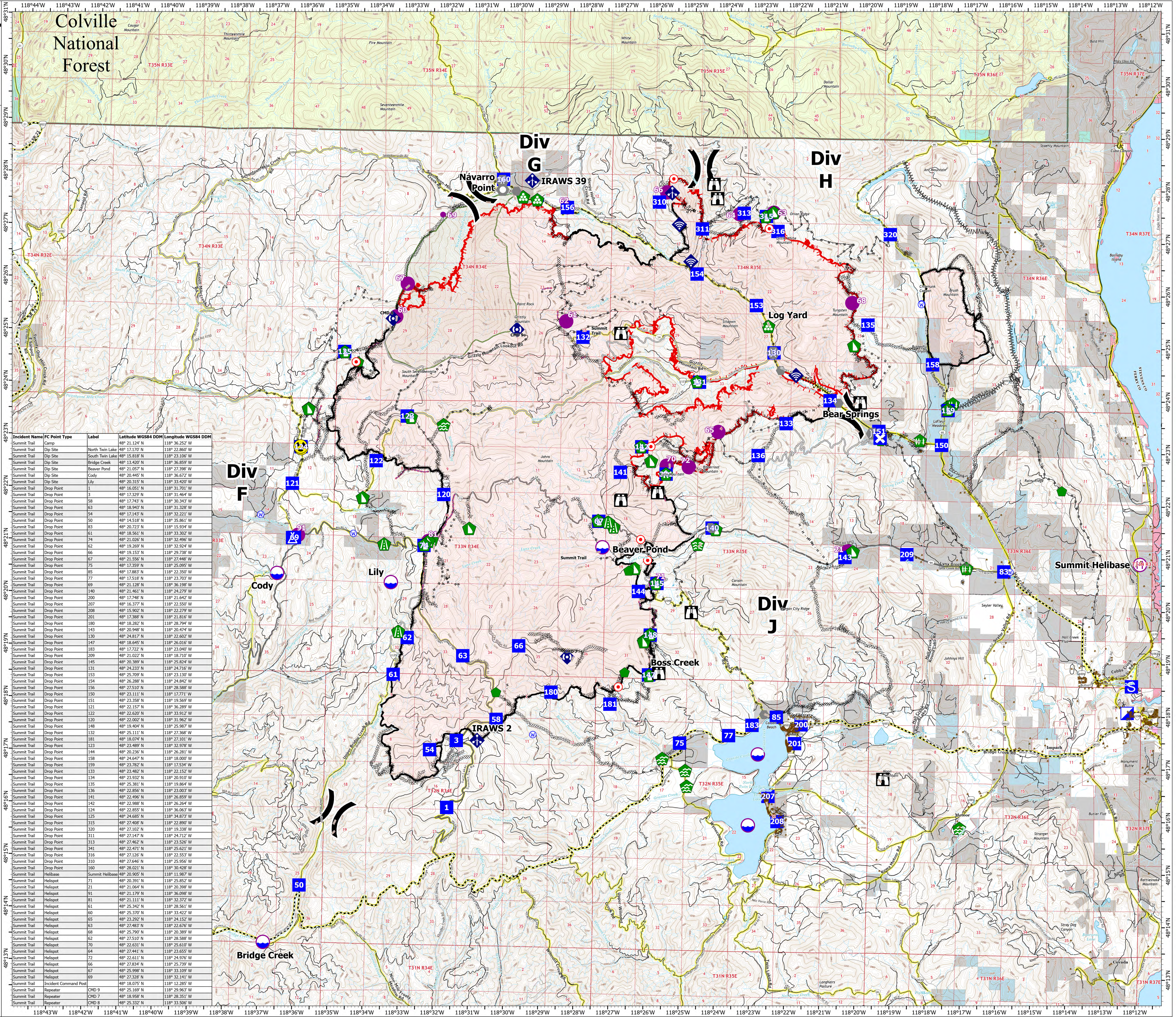


# COMM MEDICAL

Summit Trail Fire  
 WA-COA-200087  
 September 10, 2021  
 48,795 acres on 09/08/2021 at 2153



- Structures
- Dip Site
- Helispot
- Helibase
- Division Break
- Incident Command Post
- Drop Point
- Closure
- Camp
- Staging Area
- Lookout
- Hot Spot - Spot Fire
- Other
- Landmark
- Bridge
- Water Development or Draft Site
- Structure Wrap
- Stream Crossing
- Road Repair
- Repair Point
- Landing or Log Deck
- Fence - Cut/ Damaged
- Dozer Push
- Mobile Weather Unit
- Internet Access
- Repeater
- Hazard
- Water Source
- Dip Site
- Helispot
- Helibase
- Incident Command Post
- Drop Point
- Camp
- Repeater
- Completed Dozer Line
- Completed Fuel Break
- Completed Hand Line
- Completed Mixed Construction Line
- Completed Road as Line
- Planned Hand Line
- Planned Mixed Construction Line
- Planned Road as Line
- Planned Secondary Line
- Access or Improved Road
- Other
- Retardant Drop
- Fire Edge
- Contained Line
- Other
- Wildfire Daily Fire Perimeter
- Main Roads
- County or Equivalent
- Colville National Forest
- Wilderness Area
- Private
- Colville Confederated Tribes
- Ferry County
- Indian Allotment Trust Lands
- Open water and lakes
- US Bureau of Reclamation
- US Forest Service
- WA DNR

Incident Name	FC Point Type	Label	Latitude WGS84 DDM	Longitude WGS84 DDM
Summit Trail	Camp		48° 21.124' N	118° 36.252' W
Summit Trail	Dip Site	North Twin Lake	48° 17.170' N	118° 22.860' W
Summit Trail	Dip Site	South Twin Lake	48° 15.818' N	118° 23.106' W
Summit Trail	Dip Site	Beaver Pond	48° 13.420' N	118° 26.859' W
Summit Trail	Dip Site	Cody	48° 20.445' N	118° 36.672' W
Summit Trail	Dip Site	Lily	48° 20.315' N	118° 33.420' W
Summit Trail	Drop Point	1	48° 16.051' N	118° 31.701' W
Summit Trail	Drop Point	3	48° 17.329' N	118° 31.464' W
Summit Trail	Drop Point	58	48° 17.743' N	118° 30.343' W
Summit Trail	Drop Point	63	48° 18.943' N	118° 31.328' W
Summit Trail	Drop Point	54	48° 17.143' N	118° 32.221' W
Summit Trail	Drop Point	50	48° 14.518' N	118° 35.861' W
Summit Trail	Drop Point	83	48° 20.723' N	118° 15.934' W
Summit Trail	Drop Point	61	48° 18.561' N	118° 33.302' W
Summit Trail	Drop Point	74	48° 17.423' N	118° 30.343' W
Summit Trail	Drop Point	62	48° 19.269' N	118° 32.924' W
Summit Trail	Drop Point	66	48° 19.153' N	118° 29.738' W
Summit Trail	Drop Point	67	48° 21.556' N	118° 27.448' W
Summit Trail	Drop Point	75	48° 17.359' N	118° 25.095' W
Summit Trail	Drop Point	85	48° 17.883' N	118° 22.350' W
Summit Trail	Drop Point	77	48° 21.026' N	118° 23.702' W
Summit Trail	Drop Point	69	48° 21.128' N	118° 36.198' W
Summit Trail	Drop Point	140	48° 21.461' N	118° 24.279' W
Summit Trail	Drop Point	200	48° 17.748' N	118° 21.642' W
Summit Trail	Drop Point	207	48° 16.377' N	118° 22.550' W
Summit Trail	Drop Point	208	48° 15.502' N	118° 22.279' W
Summit Trail	Drop Point	201	48° 21.288' N	118° 21.926' W
Summit Trail	Drop Point	180	48° 18.282' N	118° 28.794' W
Summit Trail	Drop Point	143	48° 20.948' N	118° 20.474' W
Summit Trail	Drop Point	130	48° 24.817' N	118° 22.602' W
Summit Trail	Drop Point	147	48° 18.645' N	118° 26.016' W
Summit Trail	Drop Point	183	48° 17.725' N	118° 23.040' W
Summit Trail	Drop Point	209	48° 21.022' N	118° 18.120' W
Summit Trail	Drop Point	145	48° 20.389' N	118° 25.824' W
Summit Trail	Drop Point	131	48° 24.233' N	118° 24.716' W
Summit Trail	Drop Point	153	48° 25.709' N	118° 23.130' W
Summit Trail	Drop Point	154	48° 26.288' N	118° 24.842' W
Summit Trail	Drop Point	156	48° 25.510' N	118° 26.588' W
Summit Trail	Drop Point	159	48° 23.111' N	118° 27.771' W
Summit Trail	Drop Point	151	48° 23.358' N	118° 19.569' W
Summit Trail	Drop Point	121	48° 22.157' N	118° 36.289' W
Summit Trail	Drop Point	122	48° 22.620' N	118° 33.912' W
Summit Trail	Drop Point	120	48° 22.002' N	118° 31.962' W
Summit Trail	Drop Point	148	48° 25.494' N	118° 25.987' W
Summit Trail	Drop Point	132	48° 25.111' N	118° 27.368' W
Summit Trail	Drop Point	181	48° 18.074' N	118° 27.101' W
Summit Trail	Drop Point	144	48° 20.236' N	118° 26.281' W
Summit Trail	Drop Point	158	48° 24.647' N	118° 18.000' W
Summit Trail	Drop Point	139	48° 23.762' N	118° 23.520' W
Summit Trail	Drop Point	133	48° 23.482' N	118° 22.152' W
Summit Trail	Drop Point	134	48° 23.932' N	118° 20.910' W
Summit Trail	Drop Point	135	48° 25.381' N	118° 19.864' W
Summit Trail	Drop Point	136	48° 22.850' N	118° 23.003' W
Summit Trail	Drop Point	141	48° 22.496' N	118° 26.859' W
Summit Trail	Drop Point	142	48° 26.988' N	118° 26.368' W
Summit Trail	Drop Point	124	48° 22.855' N	118° 36.063' W
Summit Trail	Drop Point	125	48° 24.685' N	118° 34.873' W
Summit Trail	Drop Point	315	48° 27.408' N	118° 22.890' W
Summit Trail	Drop Point	320	48° 27.102' N	118° 19.338' W
Summit Trail	Drop Point	311	48° 27.147' N	118° 24.712' W
Summit Trail	Drop Point	313	48° 23.526' N	118° 23.462' W
Summit Trail	Drop Point	341	48° 22.471' N	118° 25.621' W
Summit Trail	Drop Point	316	48° 27.126' N	118° 22.553' W
Summit Trail	Drop Point	310	48° 27.646' N	118° 25.956' W
Summit Trail	Drop Point	160	48° 28.021' N	118° 30.428' W
Summit Trail	Helibase	Summit Helibase	48° 20.905' N	118° 11.987' W
Summit Trail	Helispot	71	48° 20.852' N	118° 26.852' W
Summit Trail	Helispot	21	48° 23.064' N	118° 20.398' W
Summit Trail	Helispot	91	48° 21.178' N	118° 36.098' W
Summit Trail	Helispot	81	48° 21.111' N	118° 32.372' W
Summit Trail	Helispot	61	48° 25.342' N	118° 28.561' W
Summit Trail	Helispot	60	48° 25.370' N	118° 33.422' W
Summit Trail	Helispot	65	48° 23.292' N	118° 26.292' W
Summit Trail	Helispot	63	48° 22.483' N	118° 22.676' W
Summit Trail	Helispot	68	48° 25.790' N	118° 20.389' W
Summit Trail	Helispot	62	48° 27.510' N	118° 28.588' W
Summit Trail	Helispot	70	48° 22.631' N	118° 25.610' W
Summit Trail	Helispot	64	48° 27.441' N	118° 23.655' W
Summit Trail	Helispot	72	48° 23.611' N	118° 24.976' W
Summit Trail	Helispot	66	48° 22.834' N	118° 25.739' W
Summit Trail	Helispot	67	48° 25.998' N	118° 33.109' W
Summit Trail	Helispot	69	48° 27.328' N	118° 32.141' W
Summit Trail	Incident Command Post		48° 18.075' N	118° 12.285' W
Summit Trail	Repeater	CHD 9	48° 25.169' N	118° 29.963' W
Summit Trail	Repeater	CHD 7	48° 18.989' N	118° 26.989' W
Summit Trail	Repeater	CHD 8	48° 25.332' N	118° 33.506' W

Miles 0 1 2  
 Kilometers 0 1 2

SOUTHWEST AREA  
 INCIDENT MANAGEMENT TEAM 4

1:40,000 - SW Team 4 - 9/9/2021 2156  
 North American 1983 Datum, LatLong Grid