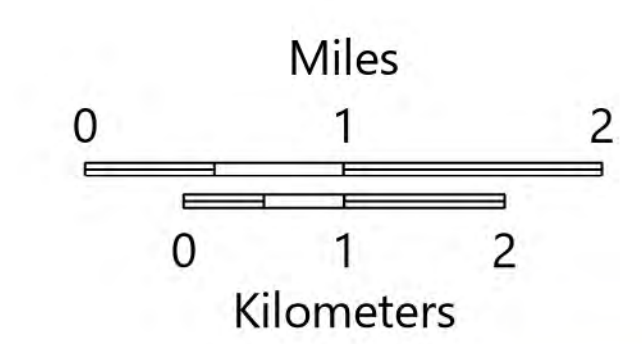
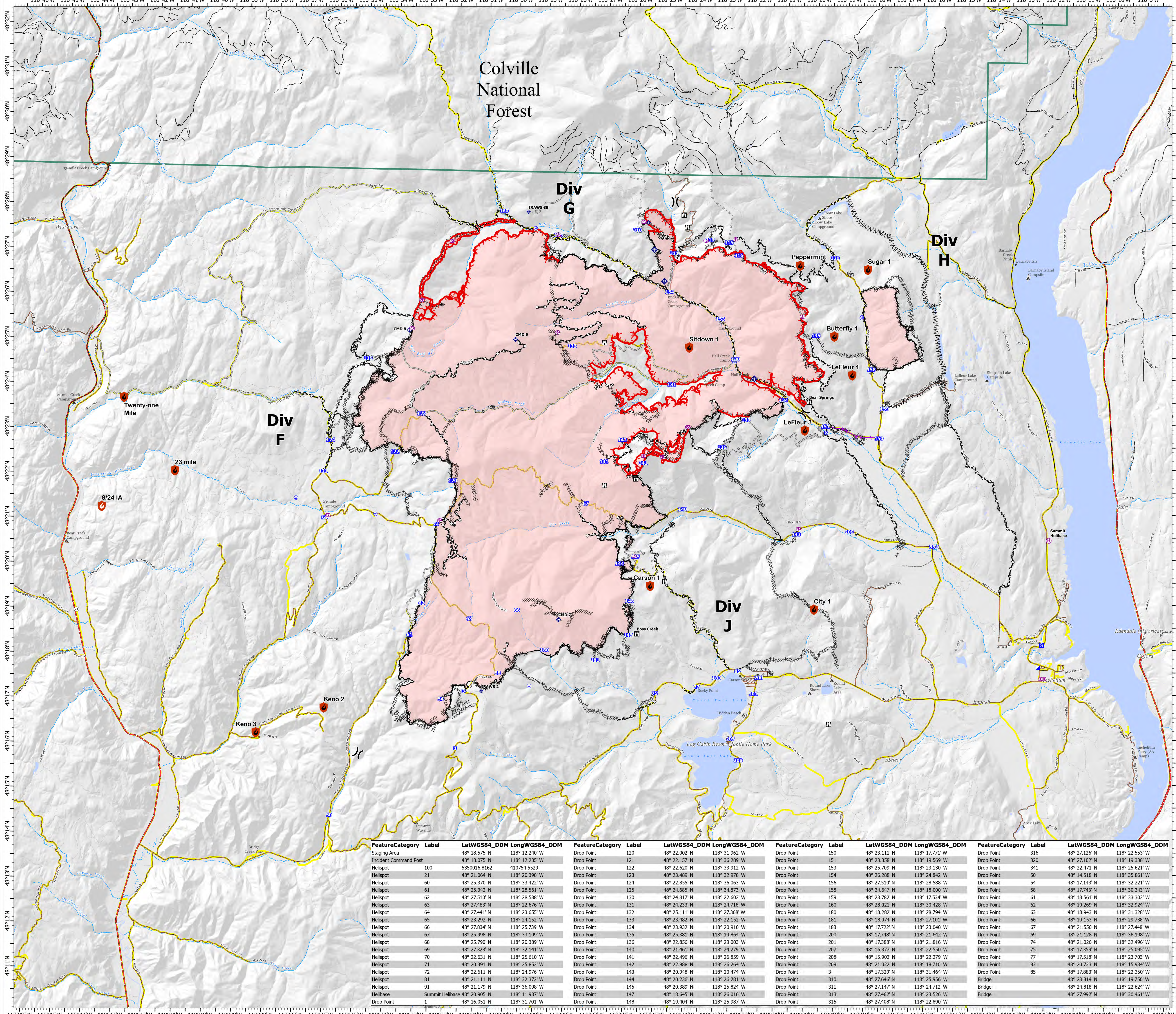


TRANSPORTATION

Summit Trail Fire
 WA-COA-200087
 September 11, 2021
 49,329 acres at 09/09/2021 at 1846

- Helispot
- ⊙ Helibase
- ICP
- Drop Point
- Staging Area
- Bridge
- Contained
- Out
- Helispot
- ⊙ Helibase
- ⌋ Division Break
- ICP
- Drop Point
- Closure
- Camp
- Staging Area
- Lookout
- Bridge
- ◆ Mobile Weather Unit
- ◆ Internet Access
- ◆ Repeater
- ⚠ Hazard
- ⊙ Water Source
- ⋯ Completed Dozer Line
- ⋯ Completed Fuel Break
- ⋯ Completed Hand Line
- ⋯ Completed Mixed Construction Line
- ⋯ Completed Road as Line
- ⋯ Planned Hand Line
- ⋯ Planned Mixed Construction Line
- ⋯ Planned Road as Line
- ⋯ Planned Secondary Line
- Access or Improved Road
- Other
- ⚡ Aerial Hazard
- Fire Edge
- Contained Line
- Event Polygon
- Forest Service Roads Open
- BIA
- County
- State Road
- Local Road
- Main Roads
- ▲ Camp_Grounds
- CTCR_EMS_Stations
- CTCR_Lookouts
- Colville National Forest



FeatureCategory	Label	LatWGS84_DDM	LongWGS84_DDM	FeatureCategory	Label	LatWGS84_DDM	LongWGS84_DDM	FeatureCategory	Label	LatWGS84_DDM	LongWGS84_DDM	FeatureCategory	Label	LatWGS84_DDM	LongWGS84_DDM
Staging Area		48° 18.575' N	118° 12.240' W	Drop Point	120	48° 22.002' N	118° 31.962' W	Drop Point	150	48° 23.111' N	118° 17.771' W	Drop Point	316	48° 27.126' N	118° 22.553' W
Incident Command Post		48° 18.075' N	118° 12.285' W	Drop Point	121	48° 22.157' N	118° 36.289' W	Drop Point	151	48° 23.358' N	118° 19.569' W	Drop Point	320	48° 27.102' N	118° 19.338' W
Helispot	100	5350016.8162	410754.5529	Drop Point	122	48° 22.620' N	118° 33.912' W	Drop Point	153	48° 25.709' N	118° 23.130' W	Drop Point	341	48° 22.471' N	118° 25.621' W
Helispot	21	48° 21.064' N	118° 20.398' W	Drop Point	123	48° 23.489' N	118° 32.978' W	Drop Point	154	48° 26.288' N	118° 24.842' W	Drop Point	50	48° 14.518' N	118° 35.861' W
Helispot	60	48° 25.370' N	118° 33.422' W	Drop Point	124	48° 22.855' N	118° 36.063' W	Drop Point	156	48° 27.510' N	118° 28.588' W	Drop Point	54	48° 17.143' N	118° 32.221' W
Helispot	61	48° 25.342' N	118° 28.561' W	Drop Point	125	48° 24.685' N	118° 34.873' W	Drop Point	158	48° 24.647' N	118° 18.000' W	Drop Point	58	48° 17.743' N	118° 30.343' W
Helispot	62	48° 27.510' N	118° 28.588' W	Drop Point	130	48° 24.817' N	118° 22.602' W	Drop Point	159	48° 23.782' N	118° 17.534' W	Drop Point	61	48° 18.561' N	118° 33.302' W
Helispot	63	48° 27.483' N	118° 22.676' W	Drop Point	131	48° 24.233' N	118° 24.716' W	Drop Point	160	48° 28.021' N	118° 30.428' W	Drop Point	62	48° 19.269' N	118° 32.924' W
Helispot	64	48° 27.441' N	118° 23.655' W	Drop Point	132	48° 25.111' N	118° 27.368' W	Drop Point	180	48° 18.282' N	118° 28.794' W	Drop Point	63	48° 18.943' N	118° 31.328' W
Helispot	65	48° 23.292' N	118° 24.152' W	Drop Point	133	48° 23.482' N	118° 22.152' W	Drop Point	181	48° 18.074' N	118° 27.101' W	Drop Point	66	48° 19.153' N	118° 29.738' W
Helispot	66	48° 27.834' N	118° 25.739' W	Drop Point	134	48° 23.932' N	118° 20.910' W	Drop Point	183	48° 17.722' N	118° 23.040' W	Drop Point	67	48° 21.556' N	118° 27.448' W
Helispot	67	48° 25.998' N	118° 33.109' W	Drop Point	135	48° 25.381' N	118° 19.864' W	Drop Point	200	48° 17.748' N	118° 21.642' W	Drop Point	69	48° 21.128' N	118° 36.198' W
Helispot	68	48° 25.790' N	118° 20.389' W	Drop Point	136	48° 22.856' N	118° 23.003' W	Drop Point	201	48° 17.388' N	118° 21.816' W	Drop Point	74	48° 21.026' N	118° 32.496' W
Helispot	69	48° 27.328' N	118° 32.141' W	Drop Point	140	48° 21.461' N	118° 24.279' W	Drop Point	207	48° 16.377' N	118° 22.550' W	Drop Point	75	48° 17.359' N	118° 25.095' W
Helispot	70	48° 22.631' N	118° 25.610' W	Drop Point	141	48° 22.496' N	118° 26.859' W	Drop Point	208	48° 15.902' N	118° 22.279' W	Drop Point	77	48° 17.518' N	118° 23.703' W
Helispot	71	48° 20.391' N	118° 25.852' W	Drop Point	142	48° 22.988' N	118° 26.264' W	Drop Point	209	48° 21.022' N	118° 18.710' W	Drop Point	83	48° 20.723' N	118° 15.934' W
Helispot	72	48° 22.611' N	118° 24.976' W	Drop Point	143	48° 20.948' N	118° 20.474' W	Drop Point	3	48° 17.329' N	118° 31.464' W	Drop Point	85	48° 17.883' N	118° 22.350' W
Helispot	81	48° 21.111' N	118° 32.372' W	Drop Point	144	48° 20.236' N	118° 26.281' W	Drop Point	310	48° 27.646' N	118° 25.956' W	Bridge		48° 23.314' N	118° 19.750' W
Helispot	91	48° 21.179' N	118° 36.098' W	Drop Point	145	48° 20.389' N	118° 25.824' W	Drop Point	311	48° 27.147' N	118° 24.712' W	Bridge		48° 24.818' N	118° 22.624' W
Helibase	Summit Helibase	48° 20.905' N	118° 11.987' W	Drop Point	147	48° 18.645' N	118° 26.016' W	Drop Point	313	48° 27.462' N	118° 23.526' W	Bridge		48° 27.992' N	118° 30.461' W
Drop Point	1	48° 16.051' N	118° 31.701' W	Drop Point	148	48° 19.404' N	118° 25.987' W	Drop Point	315	48° 27.408' N	118° 22.890' W				