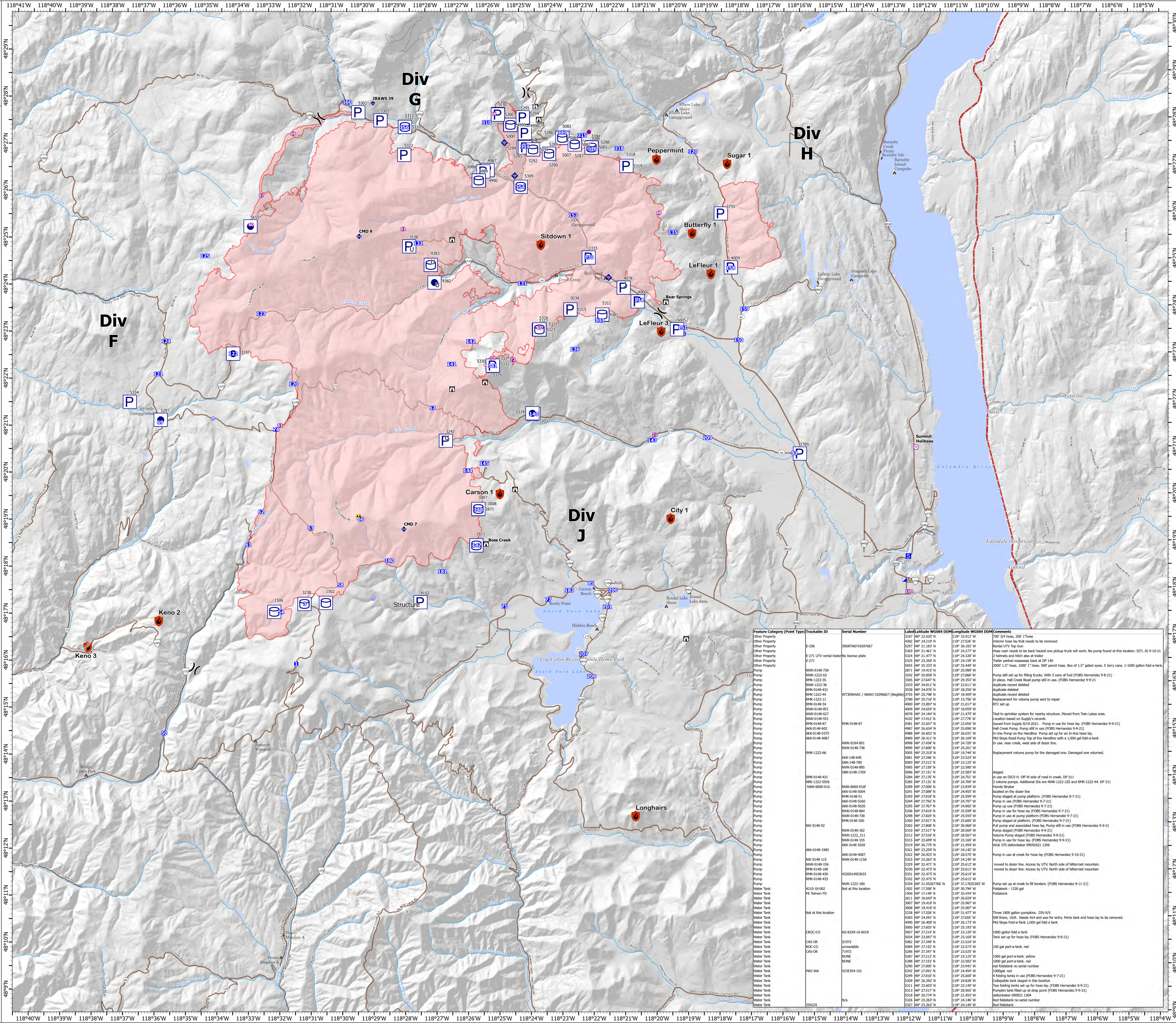


ACCOUNTABLE PROPERTY

Summit Trail Fire
WA-COA-200087
September 13, 2021

49,551 acres at 09/11/2021 at 1845

- Helispot
- Helibase
- Division Break
- ICP
- Drop Point
- Closure
- Camp
- Staging Area
- Lookout
- Bridge
- Mobile Weather Unit
- Internet Access
- Repeater
- Hazard
- Water Source
- Other Property
- Pump
- Water Tank
- Camp Grounds
- CTRC EMS Stations
- CTRC Lookouts
- BIA
- County
- Local Road
- 2 - HIGH CLEARANCE VEHICLES
- 3 - SUITABLE FOR PASSENGER CARS
- State Road
- Wildfire Daily Fire Perimeter



Feature Category (Point Type)	Trackable ID	Serial Number	Label	Latitude WCSS4 DDM	Longitude WCSS4 DDM	Comments
Other Property	E-258	INSTR18743091667	Top 3rd hose, 200' hoses	48° 22' 32.72" N	118° 18' 57.89" W	In use on D311, COP W side of road in creek, DP 311
Other Property	E-258	INSTR18743091667	Interior hose lay that needs to be removed	48° 22' 32.72" N	118° 18' 57.89" W	
Other Property	E-258	INSTR18743091667	Rental Utility Top Gun	48° 22' 32.72" N	118° 18' 57.89" W	In use on D311, COP W side of road in creek, DP 311
Other Property	E-271	UTV rental trailer	No license plate	48° 21' 48.11" N	118° 24' 27.77" W	These cash needs to be side hauled one pickup truck will work. No pump found at this location. STUL, XG 9-10-21
Other Property	E-271	UTV rental trailer	2 helmets and hitch also at trailer	48° 21' 47.77" N	118° 24' 30.70" W	
Other Property	E-271	UTV rental trailer	Trailer parked messily back at DP 343	48° 21' 49.51" N	118° 24' 19.97" W	
Pump	RWK-0148-738	2071	2007 1.5" hose, 1000' 1" hose, 500' pond hose. Box of 1.5" gated wyes, 5 Jerry cans, 1-1000 gallon fold-a-tank.	48° 25' 33.21" N	118° 33' 44.07" W	Pump still set up for filling trucks. With 3 cans of fuel (FCBS Hernandez 9-9-21)
Pump	RWK-0148-738	2243		48° 20' 58.58" N	118° 27' 58.07" W	PCS set up
Pump	RWK-1222-35	3305		48° 27' 42.77" N	118° 29' 35.53" W	In place. Hall Creek Road pump still in use. (FCBS Hernandez 9-9-21)
Pump	RWK-1222-36	3333		48° 24' 41.11" N	118° 22' 51.17" W	duplicate record deleted
Pump	RWK-0148-411	3338		48° 24' 07.92" N	118° 28' 56.50" W	duplicate record deleted
Pump	RWK-1222-44	3755		48° 25' 37.98" N	118° 18' 40.09" W	duplicate record deleted
Pump	RWK-1222-11	4000		48° 20' 27.92" N	118° 21' 56.76" W	Replacement for volume pump sent to repair
Pump	RWK-0148-34	4009		48° 23' 39.87" N	118° 21' 51.71" W	PCS set up
Pump	RWK-0148-851	4009		48° 24' 45.54" N	118° 18' 05.99" W	Tied to sprinkler system for nearby structure. Moved from Twin Lakes area.
Pump	RWK-0148-827	4078		48° 24' 18.84" N	118° 21' 47.95" W	Location based on Supply's records
Pump	RWK-0148-551	4102		48° 17' 42.12" N	118° 27' 27.78" W	
Pump	RWK-0148-87	4381		48° 23' 45.27" N	118° 22' 02.67" W	Sealed from Supply 8/19/2021. Pump in use for hose lay. (FCBS Hernandez 9-9-21)
Pump	AKK-0148-622	4983		48° 26' 04.34" N	118° 25' 28.99" W	Hill Creek Pump. Pump still in use (FCBS Hernandez 9-9-21)
Pump	AKK-0148-5375	4988		48° 26' 40.22" N	118° 26' 03.31" W	In-line Pump on the Handline. Pump set up for an In-line hose lay.
Pump	AKK-0148-4807	4998		48° 25' 48.11" N	118° 26' 18.97" W	Hill Shore Road Pump top of the Handline with a 1,000 gal fold-a-tank
Pump	RWK-0148-738	4998		48° 25' 58.97" N	118° 24' 28.78" W	In use, near creek, west side of clear line.
Pump	RWK-1222-66	5081		48° 23' 34.26" N	118° 23' 52.33" W	Replacement volume pump for the damaged one. Damaged one returned.
Pump	AKK-148-645	5083		48° 22' 22.12" N	118° 23' 12.25" W	staged.
Pump	AKK-0148-789	5085		48° 22' 58.78" N	118° 22' 58.97" W	
Pump	AKK-0148-1709	5086		48° 22' 55.21" N	118° 22' 58.97" W	
Pump	RWK-0148-531	5086		48° 22' 55.21" N	118° 22' 58.97" W	
Pump	RWK-1222-596	5085		48° 22' 51.31" N	118° 24' 70.79" W	3 volume pumps. Additional IDs are NWK-1222-225 and RWK-1222-44. DP 311
Pump	RWK-6000-0167	5299		48° 27' 06.06" N	118° 23' 33.97" W	in use on D311, COP W side of road in creek, DP 311
Pump	AKK-0148-5094	5299		48° 27' 06.06" N	118° 23' 33.97" W	
Pump	RWK-0148-51	5299		48° 27' 06.06" N	118° 23' 33.97" W	Pump staged at pump platform. (FCBS Hernandez 9-9-21)
Pump	AKK-0148-5260	5294		48° 27' 56.28" N	118° 24' 79.77" W	Pump in use (FCBS Hernandez 9-9-21)
Pump	AKK-0148-5020	5295		48° 27' 22.97" N	118° 24' 48.82" W	Pump in use (FCBS Hernandez 9-9-21)
Pump	RWK-0148-484	5296		48° 27' 31.97" N	118° 25' 59.99" W	Pump in use for hose lay (FCBS Hernandez 9-9-21)
Pump	RWK-0148-738	5299		48° 23' 29.29" N	118° 25' 59.99" W	Pump in use at pump platform (FCBS Hernandez 9-9-21)
Pump	RWK-0148-300	5300		48° 22' 17.21" N	118° 25' 60.07" W	Pump staged at platform. (FCBS Hernandez 9-9-21)
Pump	NW 0148-92	5302		48° 27' 00.07" N	118° 30' 08.68" W	Pull pump and associated hose lay. Pump still in use (FCBS Hernandez 9-9-21)
Pump	NW 0148-182	5312		48° 27' 17.17" N	118° 28' 56.99" W	Pump staged (FCBS Hernandez 9-9-21)
Pump	NW 1222-211	5312		48° 25' 18.18" N	118° 28' 56.97" W	Volume Pump staged (FCBS Hernandez 9-9-21)
Pump	NW 0148-155	5315		48° 23' 59.99" N	118° 23' 16.07" W	Pump in use for hose lay (FCBS Hernandez 9-9-21)
Pump	AKK-0148-528	5319		48° 26' 27.92" N	118° 21' 45.94" W	Weka 375 gallon tankler 09/09/21 1304
Pump	AKK-0148-1983	5321		48° 23' 25.99" N	118° 24' 14.27" W	
Pump	AKK-0148-4087	5323		48° 26' 25.99" N	118° 28' 57.97" W	Pump in use at creek for hose lay (FCBS Hernandez 9-9-21)
Pump	NW 0148-115	5323		48° 23' 25.99" N	118° 24' 14.27" W	
Pump	RWK-0148-156	5328		48° 22' 47.73" N	118° 25' 51.27" W	moved to clear line. Access by UTV, north side of Mt Rainier mountain.
Pump	RWK-0148-188	5328		48° 22' 47.73" N	118° 25' 51.27" W	
Pump	RWK-0148-430	5331		48° 22' 47.73" N	118° 25' 51.27" W	
Pump	Pump	4320014953633		48° 22' 47.73" N	118° 25' 51.27" W	
Pump	Pump	RWK-1222-180		48° 22' 47.73" N	118° 25' 51.27" W	
Water Tank	4210-18-002	1502	Not at this location	48° 21' 52.92079766" N	118° 25' 51.27" W	
Water Tank	AK Tolman PD	1504	Not at this location	48° 17' 35.98" N	118° 30' 79.94" W	
Water Tank	Water Tank	1508	Not at this location	48° 17' 35.98" N	118° 30' 79.94" W	
Water Tank	Water Tank	2611	Not at this location	48° 18' 45.45" N	118° 26' 02.99" W	
Water Tank	Water Tank	3007	Not at this location	48° 18' 45.45" N	118° 26' 02.99" W	
Water Tank	Water Tank	3008	Not at this location	48° 18' 45.45" N	118° 26' 02.99" W	
Water Tank	Water Tank	3238	Not at this location	48° 17' 32.38" N	118° 31' 47.77" W	
Water Tank	Water Tank	3240	Not at this location	48° 17' 32.38" N	118° 31' 47.77" W	
Water Tank	Water Tank	3241	Not at this location	48° 17' 32.38" N	118° 31' 47.77" W	
Water Tank	Water Tank	3242	Not at this location	48° 17' 32.38" N	118° 31' 47.77" W	
Water Tank	Water Tank	3243	Not at this location	48° 17' 32.38" N	118° 31' 47.77" W	
Water Tank	Water Tank	3244	Not at this location	48° 17' 32.38" N	118° 31' 47.77" W	
Water Tank	Water Tank	3245	Not at this location	48° 17' 32.38" N	118° 31' 47.77" W	
Water Tank	Water Tank	3246	Not at this location	48° 17' 32.38" N	118° 31' 47.77" W	
Water Tank	Water Tank	3247	Not at this location	48° 17' 32.38" N	118° 31' 47.77" W	
Water Tank	Water Tank	3248	Not at this location	48° 17' 32.38" N	118° 31' 47.77" W	
Water Tank	Water Tank	3249	Not at this location	48° 17' 32.38" N	118° 31' 47.77" W	
Water Tank	Water Tank	3250	Not at this location	48° 17' 32.38" N	118° 31' 47.77" W	
Water Tank	Water Tank	3251	Not at this location	48° 17' 32.38" N	118° 31' 47.77" W	
Water Tank	Water Tank	3252	Not at this location	48° 17' 32.38" N	118° 31' 47.77" W	
Water Tank	Water Tank	3253	Not at this location	48° 17' 32.38" N	118° 31' 47.77" W	
Water Tank	Water Tank	3254	Not at this location	48° 17' 32.38" N	118° 31' 47.77" W	
Water Tank	Water Tank	3255	Not at this location	48° 17' 32.38" N	118° 31' 47.77" W	
Water Tank	Water Tank	3256	Not at this location	48° 17' 32.38" N	118° 31' 47.77" W	
Water Tank	Water Tank	3257	Not at this location	48° 17' 32.38" N	118° 31' 47.77" W	
Water Tank	Water Tank	3258	Not at this location	48° 17' 32.38" N	118° 31' 47.77" W	
Water Tank	Water Tank	3259	Not at this location	48° 17' 32.38" N	118° 31' 47.77" W	
Water Tank	Water Tank	3260	Not at this location	48° 17' 32.38" N	118° 31' 47.77" W	
Water Tank	Water Tank	3261	Not at this location	48° 17' 32.38" N	118° 31' 47.77" W	
Water Tank	Water Tank	3262	Not at this location	48° 17' 32.38" N	118° 31' 47.77" W	
Water Tank	Water Tank	3263	Not at this location	48° 17' 32.38" N	118° 31' 47.77" W	
Water Tank	Water Tank	3264	Not at this location	48° 17' 32.38" N	118° 31' 47.77" W	
Water Tank	Water Tank	3265	Not at this location	48° 17' 32.38" N	118° 31' 47.77" W	
Water Tank	Water Tank	3266	Not at this location	48° 17' 32.38" N	118° 31' 47.77" W	
Water Tank	Water Tank	3267	Not at this location	48° 17' 32.38" N	118° 31' 47.77" W	

Miles
0 1 2

Kilometers
0 1 2

145,000 - SW Team 4 - 9/12/2021 2105
North American 1983 Datum, LatLong Grid