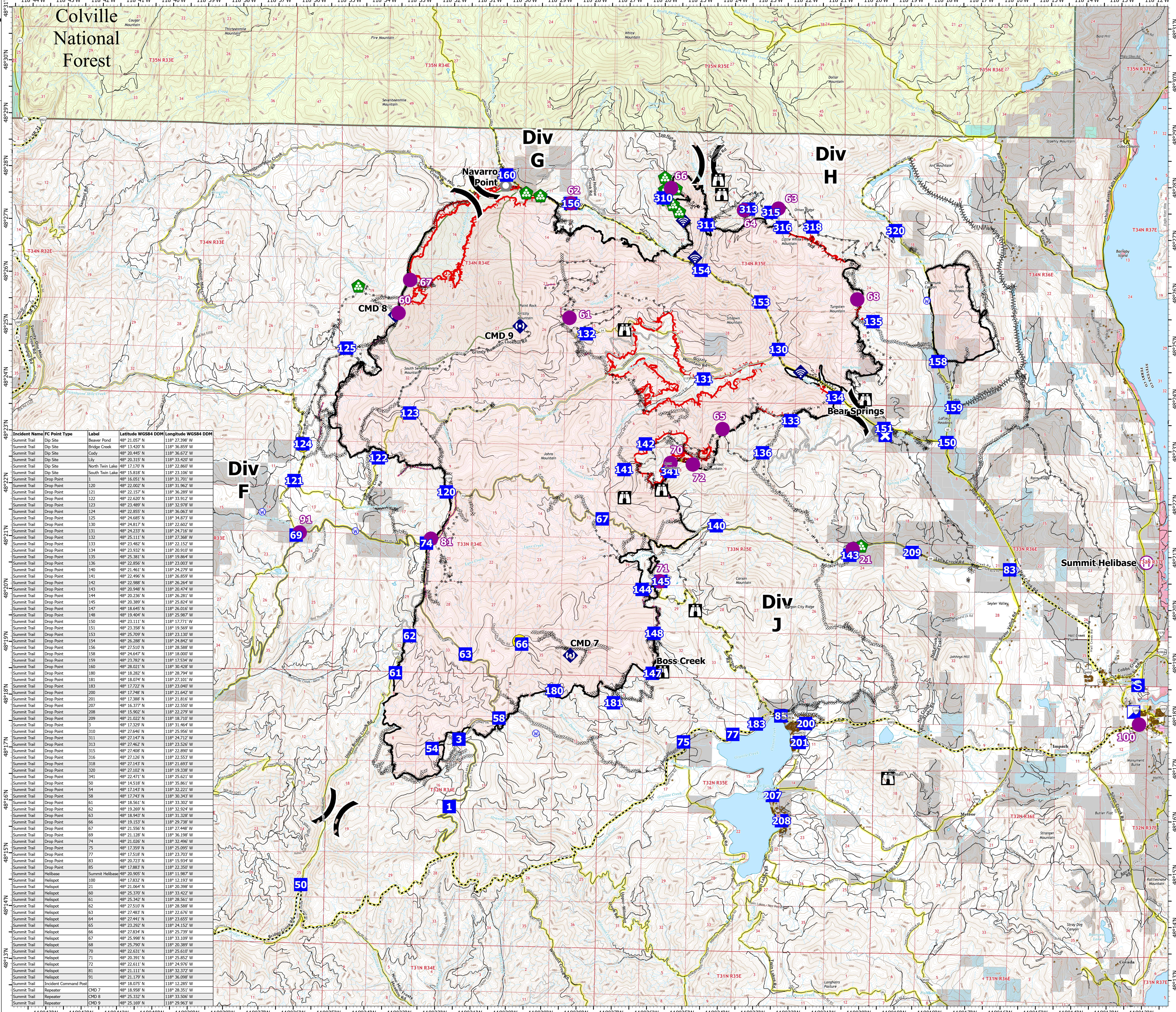


COMM MEDICAL

Summit Trail Fire
 WA-COA-200087
 September 15, 2021
 49,554 acres at 09/13/2021 at 1850

- Helispot
- ⊕ Helibase
-) Division Break
- Incident Command Post
- Drop Point
- Closure
- Staging Area
- ⊕ Lookout
- ⊕ Landmark
- ⊕ Bridge
- ⊕ Structure Wrap
- ⊕ Landing or Log Deck
- ⊕ Internet Access
- ⊕ Repeater
- ⊕ Hazard
- ⊕ Water Source
- ⊕ Completed Dozer Line
- ⊕ Completed Fuel Break
- ⊕ Completed Hand Line
- ⊕ Completed Mixed Construction Line
- ⊕ Completed Road as Line
- ⊕ Access or Improved Road
- ⊕ Highlighted Feature
- ⊕ Other
- ⊕ Retardant Drop
- ⊕ Fire Edge
- ⊕ Contained Line
- ⊕ Wildfire Daily Fire Perimeter
- ⊕ Structures
- ⊕ Main Roads
- ⊕ County or Equivalent
- ⊕ Colville National Forest
- ⊕ Wilderness Area
- ⊕ Private
- ⊕ Colville Confederated Tribes
- ⊕ Ferry County
- ⊕ Indian Allotment Trust Lands
- ⊕ Open water and lakes
- ⊕ US Bureau of Reclamation
- ⊕ US Forest Service
- ⊕ WA DNR



Incident Name	FC Point Type	Label	Latitude WGS84 DDM	Longitude WGS84 DDM
Summit Trail	Dip Site	Beaver Pond	48° 21.05' N	118° 27.39' W
Summit Trail	Dip Site	Bridge Creek	48° 13.420' N	118° 36.859' W
Summit Trail	Dip Site	Cody	48° 20.445' N	118° 36.672' W
Summit Trail	Dip Site	Lay	48° 20.315' N	118° 32.420' W
Summit Trail	Dip Site	North Twin Lake	48° 17.170' N	118° 22.860' W
Summit Trail	Dip Site	South Twin Lake	48° 15.818' N	118° 23.106' W
Summit Trail	Drop Point	1	48° 16.051' N	118° 31.701' W
Summit Trail	Drop Point	120	48° 22.002' N	118° 31.962' W
Summit Trail	Drop Point	121	48° 22.157' N	118° 35.289' W
Summit Trail	Drop Point	122	48° 23.520' N	118° 32.912' W
Summit Trail	Drop Point	123	48° 23.489' N	118° 32.978' W
Summit Trail	Drop Point	124	48° 22.853' N	118° 36.063' W
Summit Trail	Drop Point	125	48° 24.685' N	118° 34.873' W
Summit Trail	Drop Point	130	48° 24.817' N	118° 22.602' W
Summit Trail	Drop Point	131	48° 24.233' N	118° 24.716' W
Summit Trail	Drop Point	132	48° 25.117' N	118° 22.286' W
Summit Trail	Drop Point	133	48° 23.482' N	118° 22.152' W
Summit Trail	Drop Point	134	48° 23.932' N	118° 20.910' W
Summit Trail	Drop Point	135	48° 25.381' N	118° 19.864' W
Summit Trail	Drop Point	136	48° 22.856' N	118° 23.003' W
Summit Trail	Drop Point	140	48° 21.461' N	118° 24.279' W
Summit Trail	Drop Point	141	48° 23.494' N	118° 26.859' W
Summit Trail	Drop Point	142	48° 22.988' N	118° 26.264' W
Summit Trail	Drop Point	143	48° 20.948' N	118° 20.474' W
Summit Trail	Drop Point	144	48° 20.236' N	118° 26.281' W
Summit Trail	Drop Point	145	48° 20.389' N	118° 25.824' W
Summit Trail	Drop Point	147	48° 18.645' N	118° 25.016' W
Summit Trail	Drop Point	148	48° 20.484' N	118° 25.907' W
Summit Trail	Drop Point	150	48° 23.111' N	118° 17.771' W
Summit Trail	Drop Point	151	48° 23.358' N	118° 19.569' W
Summit Trail	Drop Point	153	48° 25.709' N	118° 23.130' W
Summit Trail	Drop Point	154	48° 26.288' N	118° 24.842' W
Summit Trail	Drop Point	156	48° 27.510' N	118° 25.586' W
Summit Trail	Drop Point	158	48° 24.641' N	118° 18.400' W
Summit Trail	Drop Point	159	48° 23.782' N	118° 17.534' W
Summit Trail	Drop Point	160	48° 28.021' N	118° 30.428' W
Summit Trail	Drop Point	180	48° 18.282' N	118° 28.794' W
Summit Trail	Drop Point	181	48° 18.074' N	118° 27.101' W
Summit Trail	Drop Point	183	48° 17.722' N	118° 23.040' W
Summit Trail	Drop Point	200	48° 17.248' N	118° 21.642' W
Summit Trail	Drop Point	201	48° 17.388' N	118° 21.816' W
Summit Trail	Drop Point	207	48° 16.377' N	118° 22.550' W
Summit Trail	Drop Point	208	48° 15.902' N	118° 22.279' W
Summit Trail	Drop Point	209	48° 21.022' N	118° 18.710' W
Summit Trail	Drop Point	3	48° 23.295' N	118° 23.469' W
Summit Trail	Drop Point	310	48° 27.446' N	118° 25.956' W
Summit Trail	Drop Point	311	48° 27.147' N	118° 24.712' W
Summit Trail	Drop Point	313	48° 27.462' N	118° 23.526' W
Summit Trail	Drop Point	315	48° 27.408' N	118° 22.890' W
Summit Trail	Drop Point	316	48° 27.126' N	118° 22.553' W
Summit Trail	Drop Point	318	48° 23.143' N	118° 21.699' W
Summit Trail	Drop Point	320	48° 27.102' N	118° 19.336' W
Summit Trail	Drop Point	341	48° 22.471' N	118° 25.621' W
Summit Trail	Drop Point	50	48° 14.518' N	118° 35.861' W
Summit Trail	Drop Point	54	48° 17.143' N	118° 32.221' W
Summit Trail	Drop Point	58	48° 17.243' N	118° 30.343' W
Summit Trail	Drop Point	62	48° 16.561' N	118° 30.302' W
Summit Trail	Drop Point	63	48° 19.269' N	118° 32.924' W
Summit Trail	Drop Point	63	48° 18.943' N	118° 31.328' W
Summit Trail	Drop Point	66	48° 19.153' N	118° 29.738' W
Summit Trail	Drop Point	67	48° 21.556' N	118° 27.448' W
Summit Trail	Drop Point	69	48° 21.128' N	118° 36.196' W
Summit Trail	Drop Point	74	48° 23.026' N	118° 23.496' W
Summit Trail	Drop Point	75	48° 17.359' N	118° 25.095' W
Summit Trail	Drop Point	77	48° 17.518' N	118° 23.703' W
Summit Trail	Drop Point	83	48° 20.723' N	118° 15.934' W
Summit Trail	Drop Point	85	48° 17.883' N	118° 22.350' W
Summit Trail	Helibase	Summit Helibase	48° 20.905' N	118° 11.987' W
Summit Trail	Helispot	100	48° 12.193' N	118° 23.193' W
Summit Trail	Helispot	21	48° 23.064' N	118° 20.398' W
Summit Trail	Helispot	60	48° 25.370' N	118° 33.422' W
Summit Trail	Helispot	61	48° 25.342' N	118° 28.561' W
Summit Trail	Helispot	62	48° 27.510' N	118° 28.588' W
Summit Trail	Helispot	63	48° 27.483' N	118° 22.676' W
Summit Trail	Helispot	64	48° 23.641' N	118° 23.653' W
Summit Trail	Helispot	65	48° 23.292' N	118° 24.152' W
Summit Trail	Helispot	66	48° 27.834' N	118° 25.739' W
Summit Trail	Helispot	67	48° 25.998' N	118° 31.109' W
Summit Trail	Helispot	68	48° 25.790' N	118° 20.389' W
Summit Trail	Helispot	70	48° 22.631' N	118° 25.610' W
Summit Trail	Helispot	71	48° 20.391' N	118° 20.852' W
Summit Trail	Helispot	72	48° 22.611' N	118° 24.976' W
Summit Trail	Helispot	81	48° 21.111' N	118° 32.372' W
Summit Trail	Helispot	91	48° 21.179' N	118° 36.098' W
Summit Trail	Incident Command Post		48° 18.075' N	118° 12.285' W
Summit Trail	Repeater	CHD 7	48° 18.958' N	118° 28.351' W
Summit Trail	Repeater	CHD 8	48° 23.328' N	118° 31.596' W
Summit Trail	Repeater	CHD 9	48° 25.169' N	118° 29.963' W

Miles
 0 1 2

Kilometers
 0 1 2

140,000 - SW Team 4 - 9/14/2021 1559
 North American 1983 Datum, LatLong Grid