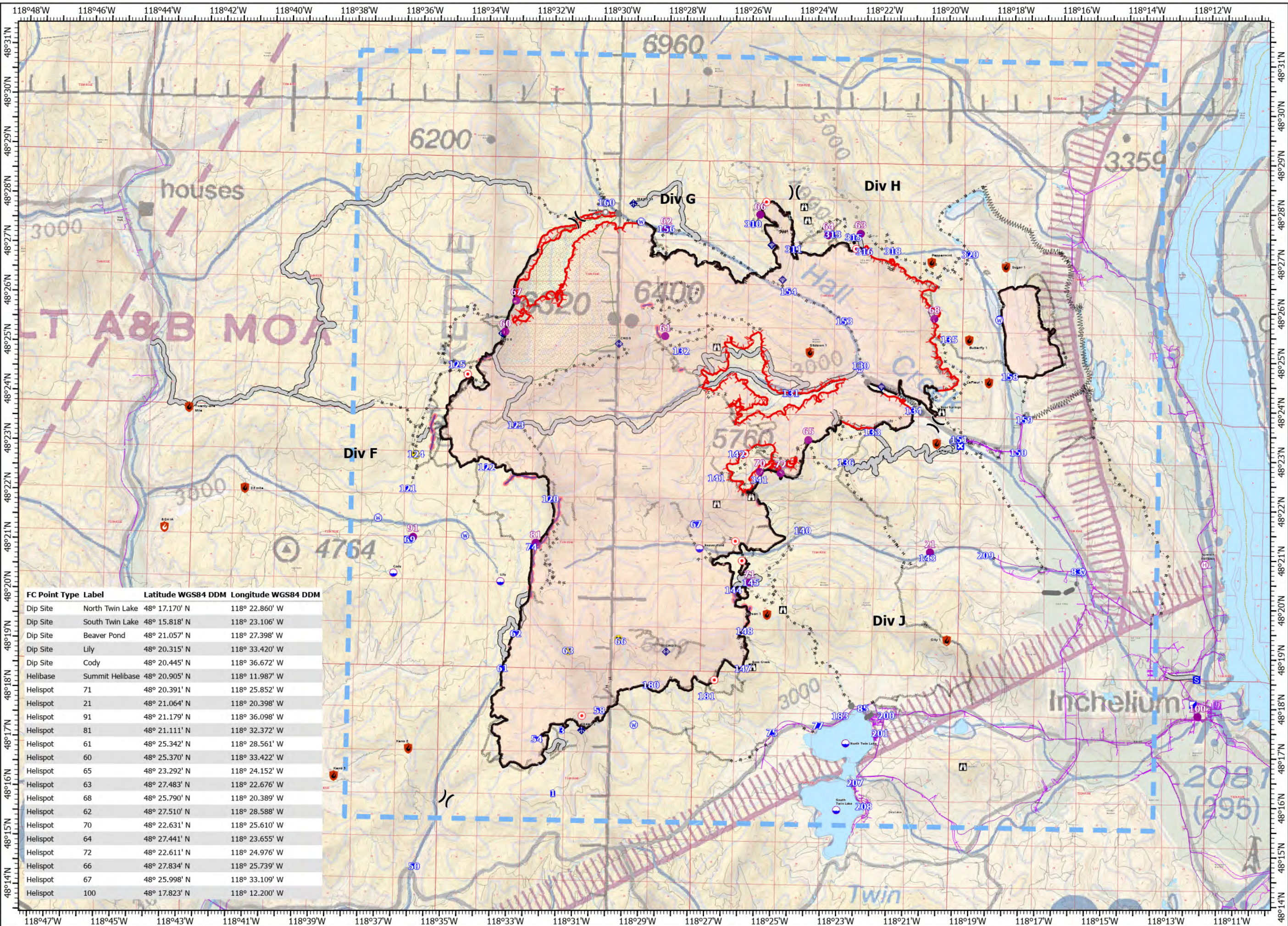


PILOT

Summit Trail Fire
WA-COA-200087
September 14, 2021

49,551 acres at 09/11/2021 at 1845

- Aerial Hazard
- Airstrip or Airport
- Check Point
- Dip Site
- Mobile Retardant Base
- Helispot
- Helibase
- Sling Site
- Unimproved Landing Area
- Division Break
- Branch Break
- Zone Break
- Medical
- Incident Command Post
- Drop Point
- Closure
- Camp
- Staging Area
- Lookout
- Hot Spot - Spot
- Fire Origin
- Value at Risk
- Other
- Landmark
- Gate
- Fire Station
- Bridge
- Mobile Weather Unit
- Internet Access
- Repeater
- Safety Zone
- Hazard
- Water Source
- Restricted Water Source
- Contained
- Out
- Wildfire Daily Fire Perimeter
- Completed Dozer Line
- Completed Fuel Break
- Completed Hand Line
- Completed Mixed Construction Line
- Completed Road as Line
- Planned Hand Line
- Planned Mixed Construction Line
- Planned Road as Line
- Planned Secondary Line
- Access or Improved Road
- Highlighted Feature
- Other
- Aerial Hazard
- Retardant Drop
- Temporary Flight Restriction
- Fire Edge
- Contained Line



FC Point Type	Label	Latitude WGS84 DDM	Longitude WGS84 DDM
Dip Site	North Twin Lake	48° 17.170' N	118° 22.860' W
Dip Site	South Twin Lake	48° 15.818' N	118° 23.106' W
Dip Site	Beaver Pond	48° 21.057' N	118° 27.398' W
Dip Site	Lily	48° 20.315' N	118° 33.420' W
Dip Site	Cody	48° 20.445' N	118° 36.672' W
Helibase	Summit Helibase	48° 20.905' N	118° 11.987' W
Helispot	71	48° 20.391' N	118° 25.852' W
Helispot	21	48° 21.064' N	118° 20.398' W
Helispot	91	48° 21.179' N	118° 36.098' W
Helispot	81	48° 21.111' N	118° 32.372' W
Helispot	61	48° 25.342' N	118° 28.561' W
Helispot	60	48° 25.370' N	118° 33.422' W
Helispot	65	48° 23.292' N	118° 24.152' W
Helispot	63	48° 27.483' N	118° 22.676' W
Helispot	68	48° 25.790' N	118° 20.389' W
Helispot	62	48° 27.510' N	118° 28.588' W
Helispot	70	48° 22.631' N	118° 25.610' W
Helispot	64	48° 27.441' N	118° 23.655' W
Helispot	72	48° 22.611' N	118° 24.976' W
Helispot	66	48° 27.834' N	118° 25.739' W
Helispot	67	48° 25.998' N	118° 33.109' W
Helispot	100	48° 17.823' N	118° 12.200' W

