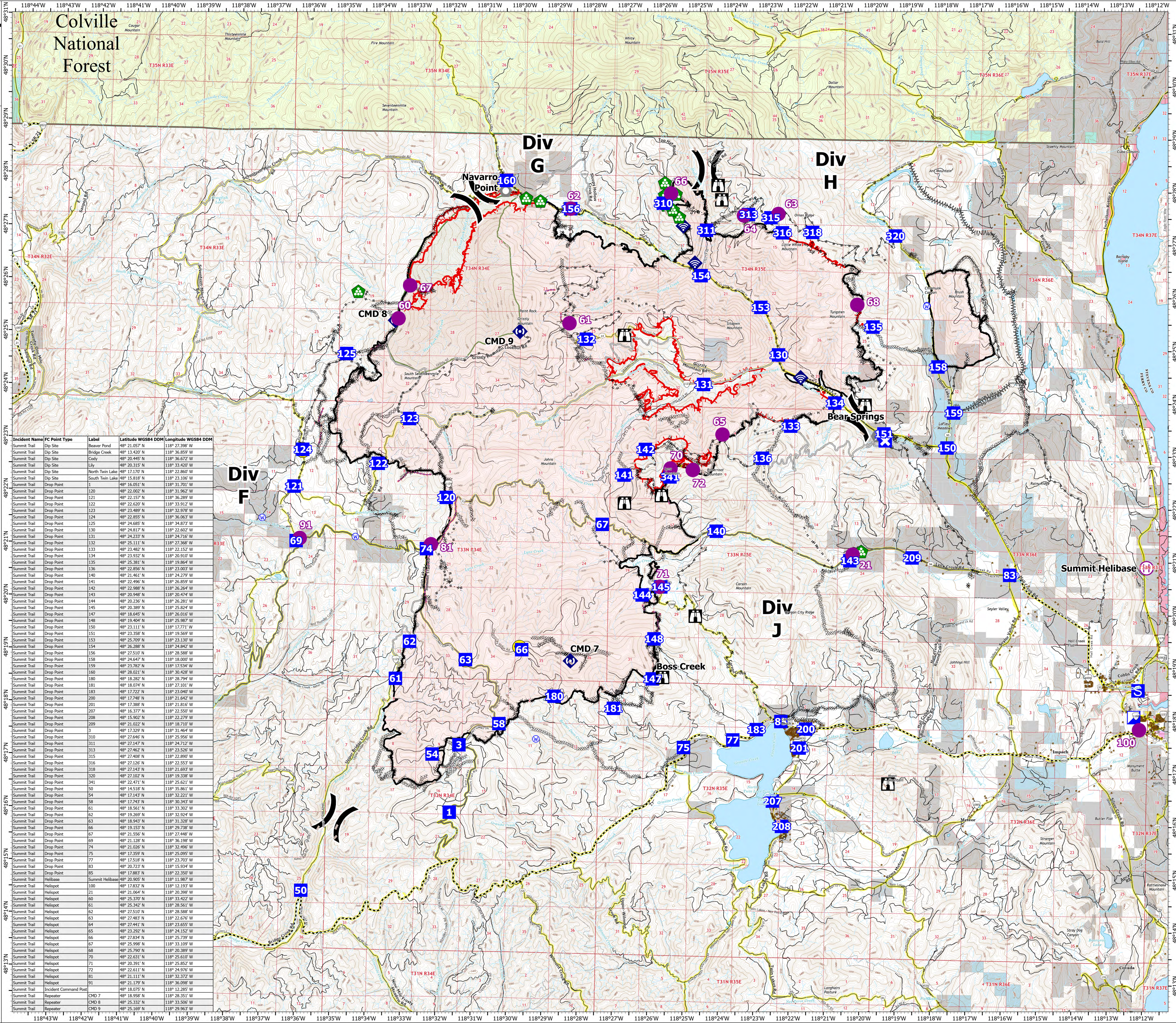


COMM MEDICAL

Summit Trail Fire
WA-COA-200087
September 15, 2021
49,554 acres at 09/13/2021 at 1850

- Helispot
- Helibase
- ⌋ Division Break
- ⌋ Incident Command Post
- ⌋ Drop Point
- ⌋ Closure
- ⌋ Staging Area
- ⌋ Lookout
- ⌋ Landmark
- ⌋ Bridge
- ⌋ Structure Wrap
- ⌋ Landing or Log Deck
- ⌋ Internet Access
- ⌋ Repeater
- ⌋ Hazard
- ⌋ Water Source
- ⌋ Completed Dozer Line
- ⌋ Completed Fuel Break
- ⌋ Completed Hand Line
- ⌋ Completed Mixed Construction Line
- ⌋ Completed Road as Line
- ⌋ Access or Improved Road
- ⌋ Highlighted Feature
- ⌋ Other
- ⌋ Retardant Drop
- ⌋ Fire Edge
- ⌋ Contained Line
- ⌋ Wildfire Daily Fire Perimeter
- ⌋ Structures
- ⌋ Main Roads
- ⌋ County or Equivalent
- ⌋ Colville National Forest
- ⌋ Wilderness Area
- ⌋ Private
- ⌋ Colville Confederated Tribes
- ⌋ Ferry County
- ⌋ Indian Allotment Trust Lands
- ⌋ Open water and lakes
- ⌋ US Bureau of Reclamation
- ⌋ US Forest Service
- ⌋ WA DNR



Incident Name	FC Point Type	Label	Latitude WGS84 DDM	Longitude WGS84 DDM
Summit Trail	Dip Site	Beaver Pond	48° 21.05' N	118° 27.398' W
Summit Trail	Dip Site	Bridge Creek	48° 13.420' N	118° 36.859' W
Summit Trail	Dip Site	Cody	48° 20.445' N	118° 36.672' W
Summit Trail	Dip Site	Lay	48° 20.315' N	118° 32.420' W
Summit Trail	Dip Site	North Twin Lake	48° 17.170' N	118° 22.860' W
Summit Trail	Dip Site	South Twin Lake	48° 15.818' N	118° 23.106' W
Summit Trail	Drop Point	1	48° 16.051' N	118° 31.701' W
Summit Trail	Drop Point	120	48° 22.002' N	118° 31.962' W
Summit Trail	Drop Point	121	48° 22.157' N	118° 32.289' W
Summit Trail	Drop Point	122	48° 23.520' N	118° 32.912' W
Summit Trail	Drop Point	123	48° 23.489' N	118° 32.978' W
Summit Trail	Drop Point	124	48° 22.853' N	118° 36.063' W
Summit Trail	Drop Point	125	48° 24.685' N	118° 34.873' W
Summit Trail	Drop Point	130	48° 24.817' N	118° 22.602' W
Summit Trail	Drop Point	131	48° 24.233' N	118° 24.716' W
Summit Trail	Drop Point	132	48° 25.111' N	118° 22.286' W
Summit Trail	Drop Point	133	48° 23.482' N	118° 22.152' W
Summit Trail	Drop Point	134	48° 23.932' N	118° 20.910' W
Summit Trail	Drop Point	135	48° 25.381' N	118° 19.864' W
Summit Trail	Drop Point	136	48° 22.856' N	118° 23.003' W
Summit Trail	Drop Point	140	48° 21.461' N	118° 24.779' W
Summit Trail	Drop Point	141	48° 23.494' N	118° 26.859' W
Summit Trail	Drop Point	142	48° 22.988' N	118° 26.264' W
Summit Trail	Drop Point	143	48° 20.948' N	118° 20.474' W
Summit Trail	Drop Point	144	48° 20.236' N	118° 26.281' W
Summit Trail	Drop Point	145	48° 20.389' N	118° 25.824' W
Summit Trail	Drop Point	147	48° 18.645' N	118° 25.016' W
Summit Trail	Drop Point	148	48° 19.484' N	118° 25.497' W
Summit Trail	Drop Point	150	48° 23.111' N	118° 17.771' W
Summit Trail	Drop Point	151	48° 23.358' N	118° 19.569' W
Summit Trail	Drop Point	153	48° 25.799' N	118° 23.130' W
Summit Trail	Drop Point	154	48° 26.288' N	118° 24.842' W
Summit Trail	Drop Point	155	48° 27.510' N	118° 26.586' W
Summit Trail	Drop Point	158	48° 24.641' N	118° 18.000' W
Summit Trail	Drop Point	159	48° 23.782' N	118° 17.534' W
Summit Trail	Drop Point	160	48° 28.021' N	118° 30.428' W
Summit Trail	Drop Point	180	48° 18.282' N	118° 28.794' W
Summit Trail	Drop Point	181	48° 18.074' N	118° 27.101' W
Summit Trail	Drop Point	183	48° 17.722' N	118° 23.040' W
Summit Trail	Drop Point	200	48° 17.248' N	118° 21.642' W
Summit Trail	Drop Point	201	48° 17.388' N	118° 21.816' W
Summit Trail	Drop Point	207	48° 16.377' N	118° 22.550' W
Summit Trail	Drop Point	208	48° 15.902' N	118° 22.279' W
Summit Trail	Drop Point	209	48° 21.022' N	118° 18.710' W
Summit Trail	Drop Point	3	48° 23.295' N	118° 23.469' W
Summit Trail	Drop Point	310	48° 27.446' N	118° 25.956' W
Summit Trail	Drop Point	311	48° 27.147' N	118° 24.712' W
Summit Trail	Drop Point	313	48° 27.462' N	118° 23.526' W
Summit Trail	Drop Point	315	48° 27.408' N	118° 22.890' W
Summit Trail	Drop Point	316	48° 27.126' N	118° 22.553' W
Summit Trail	Drop Point	318	48° 23.143' N	118° 23.699' W
Summit Trail	Drop Point	320	48° 27.102' N	118° 19.336' W
Summit Trail	Drop Point	341	48° 22.471' N	118° 25.621' W
Summit Trail	Drop Point	50	48° 14.518' N	118° 35.861' W
Summit Trail	Drop Point	54	48° 17.143' N	118° 32.221' W
Summit Trail	Drop Point	58	48° 17.243' N	118° 30.343' W
Summit Trail	Drop Point	62	48° 16.561' N	118° 30.302' W
Summit Trail	Drop Point	63	48° 19.269' N	118° 32.924' W
Summit Trail	Drop Point	63	48° 18.943' N	118° 31.328' W
Summit Trail	Drop Point	66	48° 19.153' N	118° 29.736' W
Summit Trail	Drop Point	67	48° 21.556' N	118° 27.448' W
Summit Trail	Drop Point	69	48° 21.128' N	118° 36.196' W
Summit Trail	Drop Point	74	48° 23.026' N	118° 23.496' W
Summit Trail	Drop Point	75	48° 17.359' N	118° 25.095' W
Summit Trail	Drop Point	77	48° 17.518' N	118° 23.703' W
Summit Trail	Drop Point	83	48° 20.723' N	118° 15.934' W
Summit Trail	Drop Point	85	48° 17.883' N	118° 22.350' W
Summit Trail	Helibase	Summit Helibase	48° 20.905' N	118° 11.987' W
Summit Trail	Helispot	100	48° 23.193' N	118° 23.193' W
Summit Trail	Helispot	21	48° 23.064' N	118° 20.396' W
Summit Trail	Helispot	60	48° 25.370' N	118° 33.422' W
Summit Trail	Helispot	61	48° 25.342' N	118° 28.561' W
Summit Trail	Helispot	62	48° 27.510' N	118° 28.588' W
Summit Trail	Helispot	63	48° 27.483' N	118° 22.676' W
Summit Trail	Helispot	64	48° 23.441' N	118° 23.651' W
Summit Trail	Helispot	65	48° 23.292' N	118° 24.152' W
Summit Trail	Helispot	66	48° 27.834' N	118° 25.739' W
Summit Trail	Helispot	67	48° 25.998' N	118° 31.109' W
Summit Trail	Helispot	68	48° 25.790' N	118° 20.389' W
Summit Trail	Helispot	70	48° 22.631' N	118° 25.610' W
Summit Trail	Helispot	71	48° 20.391' N	118° 20.852' W
Summit Trail	Helispot	72	48° 22.611' N	118° 24.976' W
Summit Trail	Helispot	81	48° 21.111' N	118° 32.372' W
Summit Trail	Helispot	91	48° 21.179' N	118° 36.098' W
Summit Trail	Incident Command Post	7	48° 18.075' N	118° 12.285' W
Summit Trail	Repeater	CMD 7	48° 18.958' N	118° 26.351' W
Summit Trail	Repeater	CMD 8	48° 23.322' N	118° 33.596' W
Summit Trail	Repeater	CMD 9	48° 25.169' N	118° 29.963' W

Miles 0 1 2
Kilometers 0 1 2

SOUTHWEST AREA
INCIDENT MANAGEMENT TEAM 4

1:40,000 - SW Team 4 - 9/14/2021 2037
North American 1983 Datum, LatLong Grid