

AIR OPS

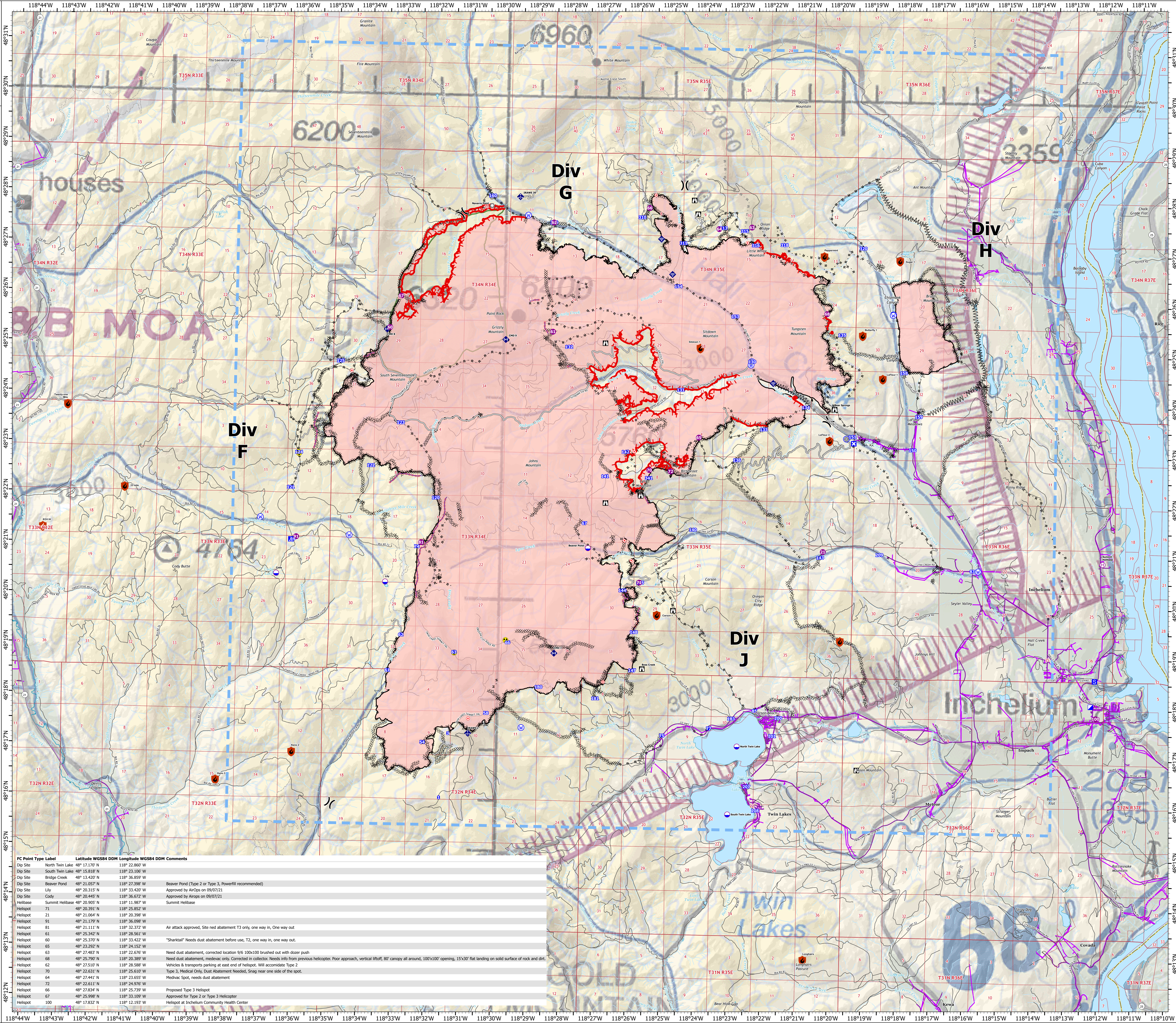
Summit Trail Fire

WA-COA-200087

September 15, 2021

49,554 acres at 09/13/2021 at 1850

- Contained
- Out
- Dip Site
- Helispot
- Helibase
- Division Break
- Incident Command Post
- Drop Point
- Closure
- Camp
- Staging Area
- Lookout
- Hot Spot - Spot Fire
- Other
- Landmark
- Bridge
- Mobile Weather Unit
- Internet Access
- Repeater
- Hazard
- Water Source
- Completed Dozer Line
- Completed Fuel Break
- Completed Hand Line
- Completed Mixed Construction Line
- Completed Road as Line
- Planned Hand Line
- Planned Mixed Construction Line
- Planned Road as Line
- Planned Secondary Line
- Access or Improved Road
- Highlighted Feature
- Other
- Aerial Hazard
- Retardant Drop
- Temporary Flight Restriction
- Fire Edge
- Contained Line
- Trail
- Transmission Lines
- Runway
- Wildfire Daily Fire
- Perimeter
- Wilderness Area



FC Point Type Label	Latitude WGS84 DDM	Longitude WGS84 DDM	Comments
Dip Site	North Twin Lake 48° 17.170' N	118° 22.860' W	
Dip Site	South Twin Lake 48° 15.818' N	118° 23.106' W	
Dip Site	Bridge Creek 48° 13.420' N	118° 23.850' W	
Dip Site	Beaver Pond 48° 21.057' N	118° 27.398' W	Beaver Pond (Type 2 or Type 3, Powerfill recommended)
Dip Site	Lily 48° 20.315' N	118° 33.420' W	Approved by AirOps on 09/07/21
Dip Site	Cody 48° 20.445' N	118° 36.672' W	Approved by AirOps on 09/07/21
Helibase	Summit Helibase 48° 20.900' N	118° 11.987' W	Summit Helibase
Helispot	71 48° 20.390' N	118° 26.850' W	
Helispot	21 48° 21.064' N	118° 20.398' W	
Helispot	91 48° 21.179' N	118° 36.098' W	
Helispot	81 48° 21.111' N	118° 32.372' W	Air attack approved, Site need abatement T3 only, one way in, One way out
Helispot	61 48° 25.342' N	118° 26.561' W	
Helispot	60 48° 25.370' N	118° 26.850' W	"Sharktail" Needs dust abatement before use, T2, one way in, one way out.
Helispot	65 48° 23.292' N	118° 24.152' W	
Helispot	63 48° 27.483' N	118° 22.676' W	Need dust abatement, corrected location 9/6 100x100 brushed out with dozer push
Helispot	68 48° 25.790' N	118° 20.389' W	Need dust abatement, medevac only. Connected in collector. Needs info from previous helicopter. Poor approach, vertical liftoff, 80' canopy all around, 100x100' opening, 15x30' flat landing on solid surface of rock and dirt.
Helispot	62 48° 27.510' N	118° 26.588' W	Vehicles & transports parking at east end of helispot. Will accommodate Type 2
Helispot	70 48° 23.631' N	118° 26.610' W	Type 3, Medical Only, Dust Abatement Needed, Snag near one side of the spot.
Helispot	64 48° 27.441' N	118° 23.655' W	Medivac Spot, needs dust abatement
Helispot	72 48° 22.611' N	118° 24.976' W	
Helispot	66 48° 27.834' N	118° 25.739' W	Proposed Type 3 Helispot
Helispot	67 48° 25.998' N	118° 33.109' W	Approved for Type 2 or Type 3 Helicopter
Helispot	100 48° 17.832' N	118° 12.192' W	Helispot at Inchelium Community Health Center

