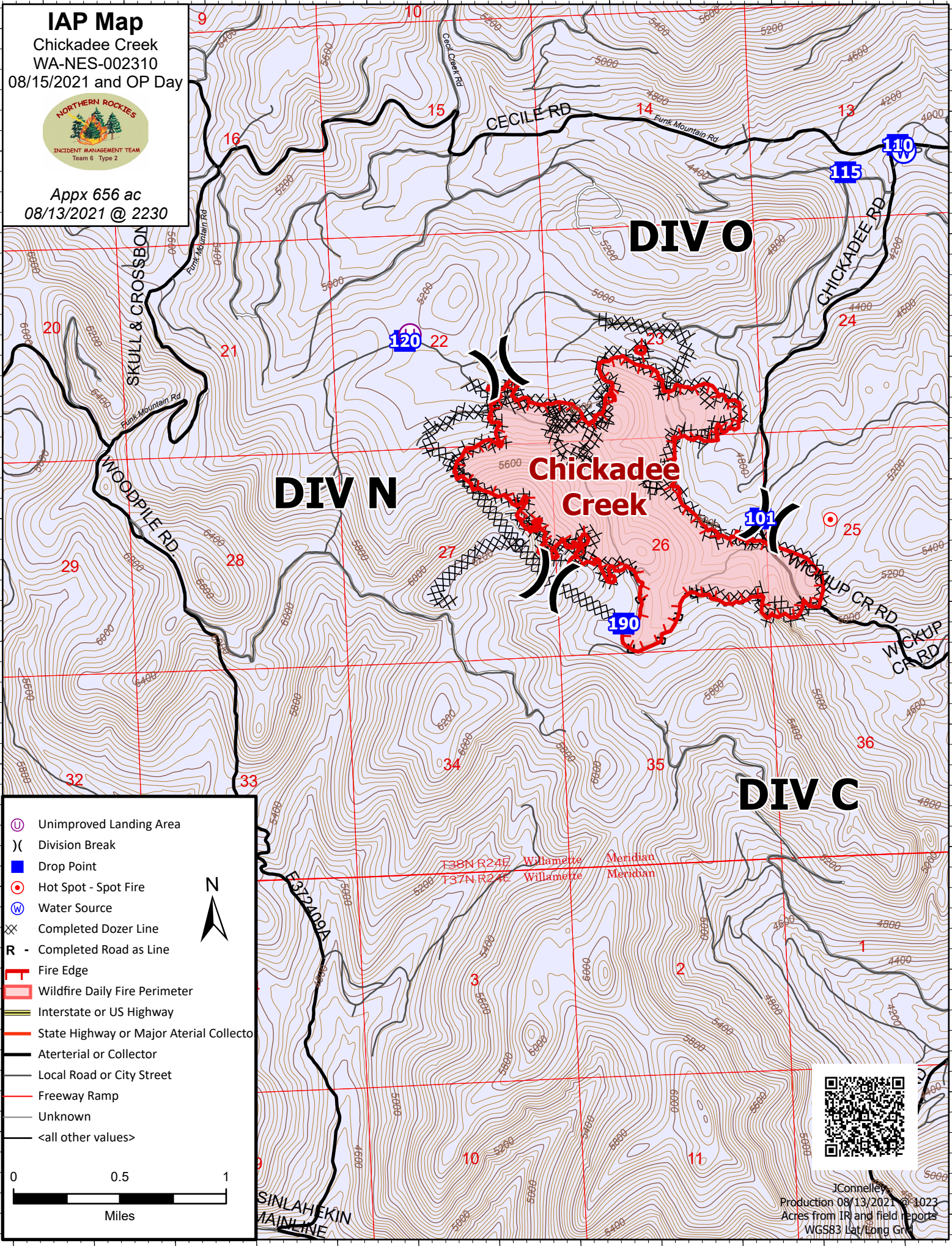


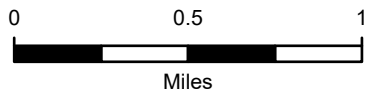
**IAP Map**  
 Chickadee Creek  
 WA-NES-002310  
 08/15/2021 and OP Day



Appx 656 ac  
 08/13/2021 @ 2230



	Unimproved Landing Area
	Division Break
	Drop Point
	Hot Spot - Spot Fire
	Water Source
	Completed Dozer Line
	Completed Road as Line
	Fire Edge
	Wildfire Daily Fire Perimeter
	Interstate or US Highway
	State Highway or Major Arterial Collector
	Arterial or Collector
	Local Road or City Street
	Freeway Ramp
	Unknown
	<all other values>



JConnelly  
 Production 08/13/2021 @ 1023  
 Acres from IR and field reports  
 WGS83 Lat/Long Grid