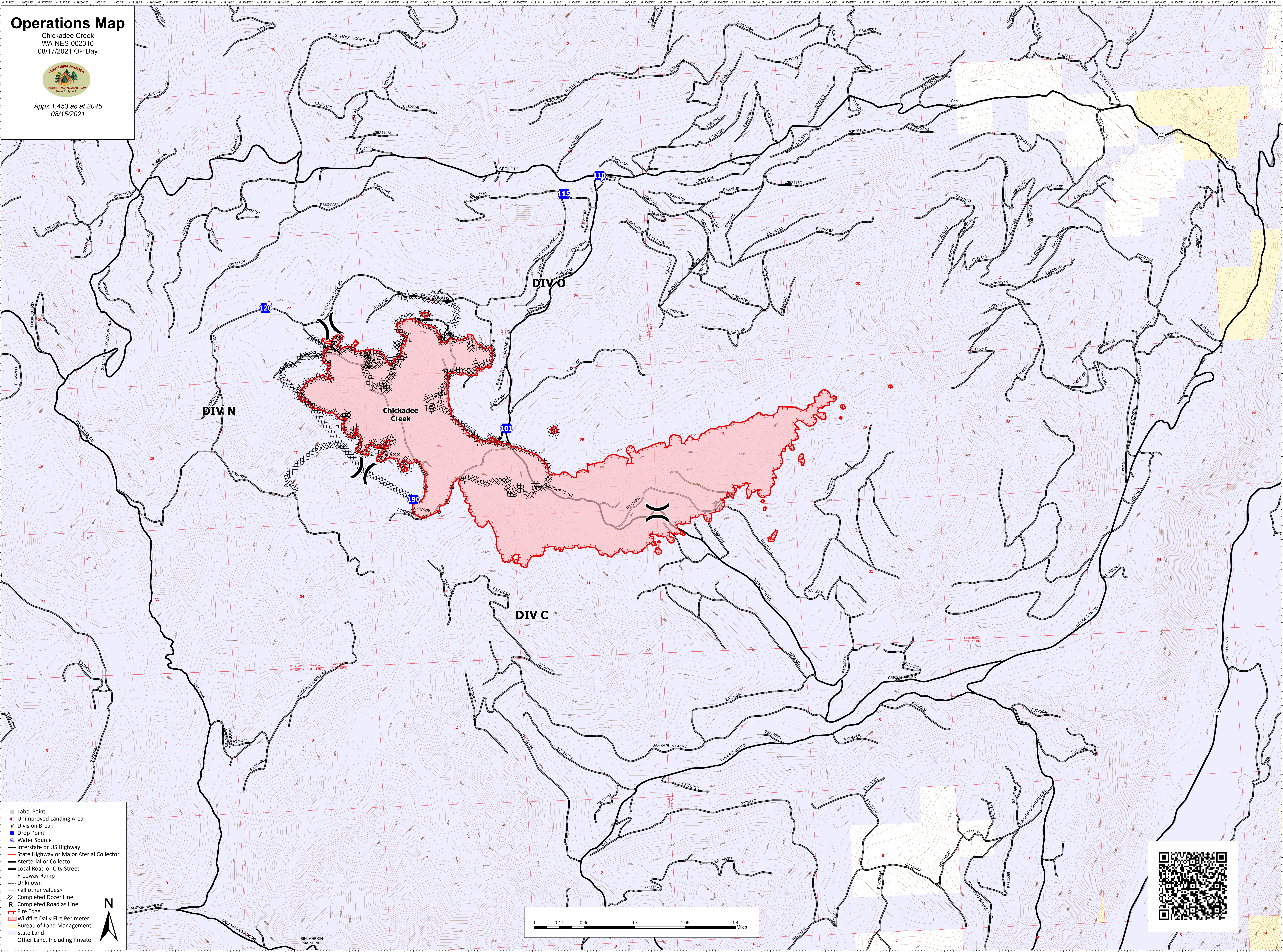


Operations Map

Chickadee Creek
WA-NES-002310
08/17/2021 OP Day



Appx 1,453 ac at 2045
08/15/2021



- Label Point
- Unimproved Landing Area
- ⌘ Division Break
- Drop Point
- Water Source
- Interstate or US Highway
- State Highway or Major Arterial Collector
- Aterterial or Collector
- Local Road or City Street
- Freeway Ramp
- Unknown
- <all other values>
- XX Completed Dozer Line
- R Completed Road as Line
- Fire Edge
- Wildfire Daily Fire Perimeter
- Bureau of Land Management
- State Land
- Other Land, Including Private

