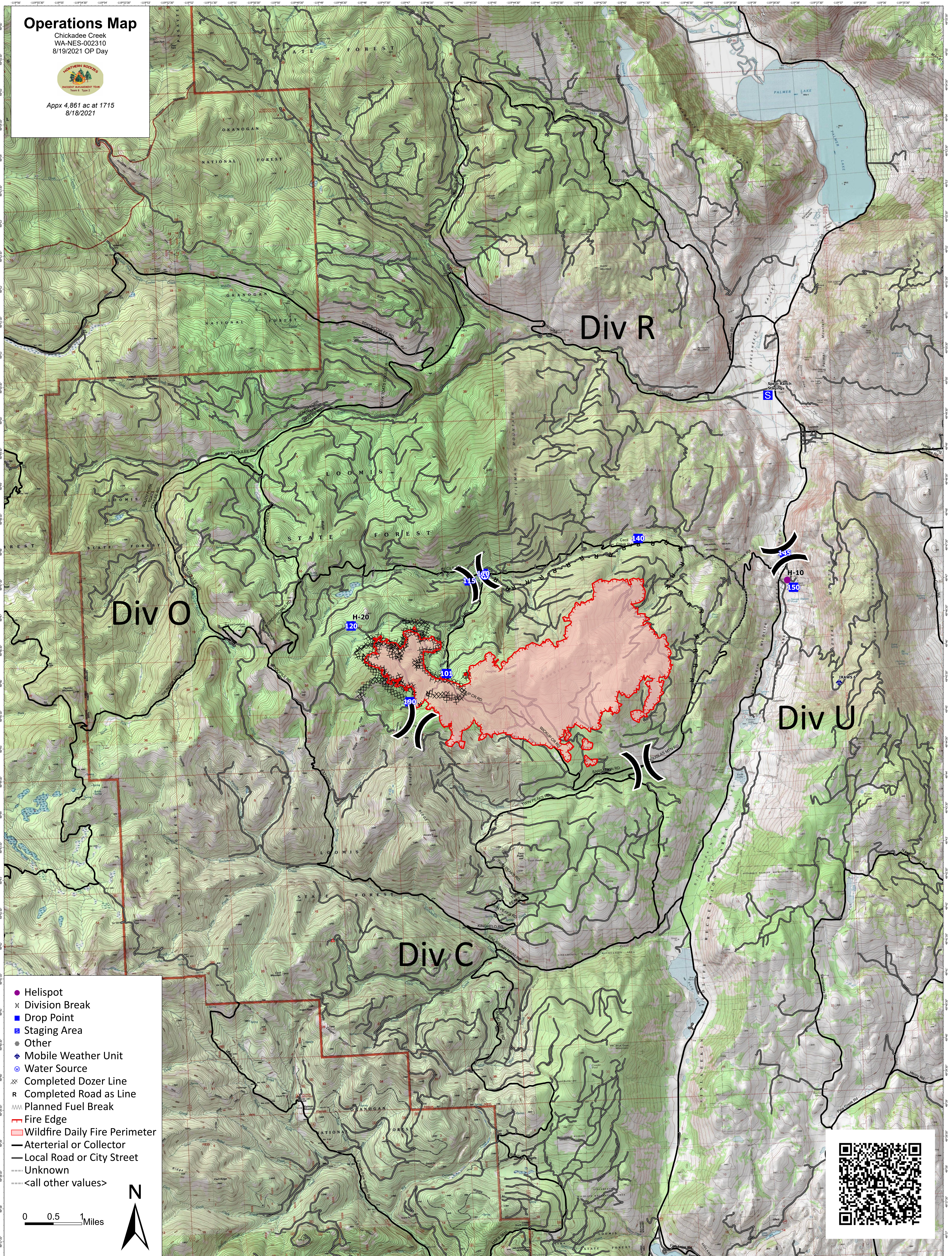


Operations Map

Chickadee Creek
WA-NES-002310
8/19/2021 OP Day



Appx 4,861 ac at 1715
8/18/2021



- Helispot
- ⌘ Division Break
- Drop Point
- Staging Area
- Other
- ◆ Mobile Weather Unit
- ⊕ Water Source
- ⊗ Completed Dozer Line
- R Completed Road as Line
- ▨ Planned Fuel Break
- Fire Edge
- ▭ Wildfire Daily Fire Perimeter
- Aterterial or Collector
- Local Road or City Street
- Unknown
- <all other values>

0 0.5 1 Miles

