

Operations

Chickadee Creek
WA-NES-002310
8/22/2021

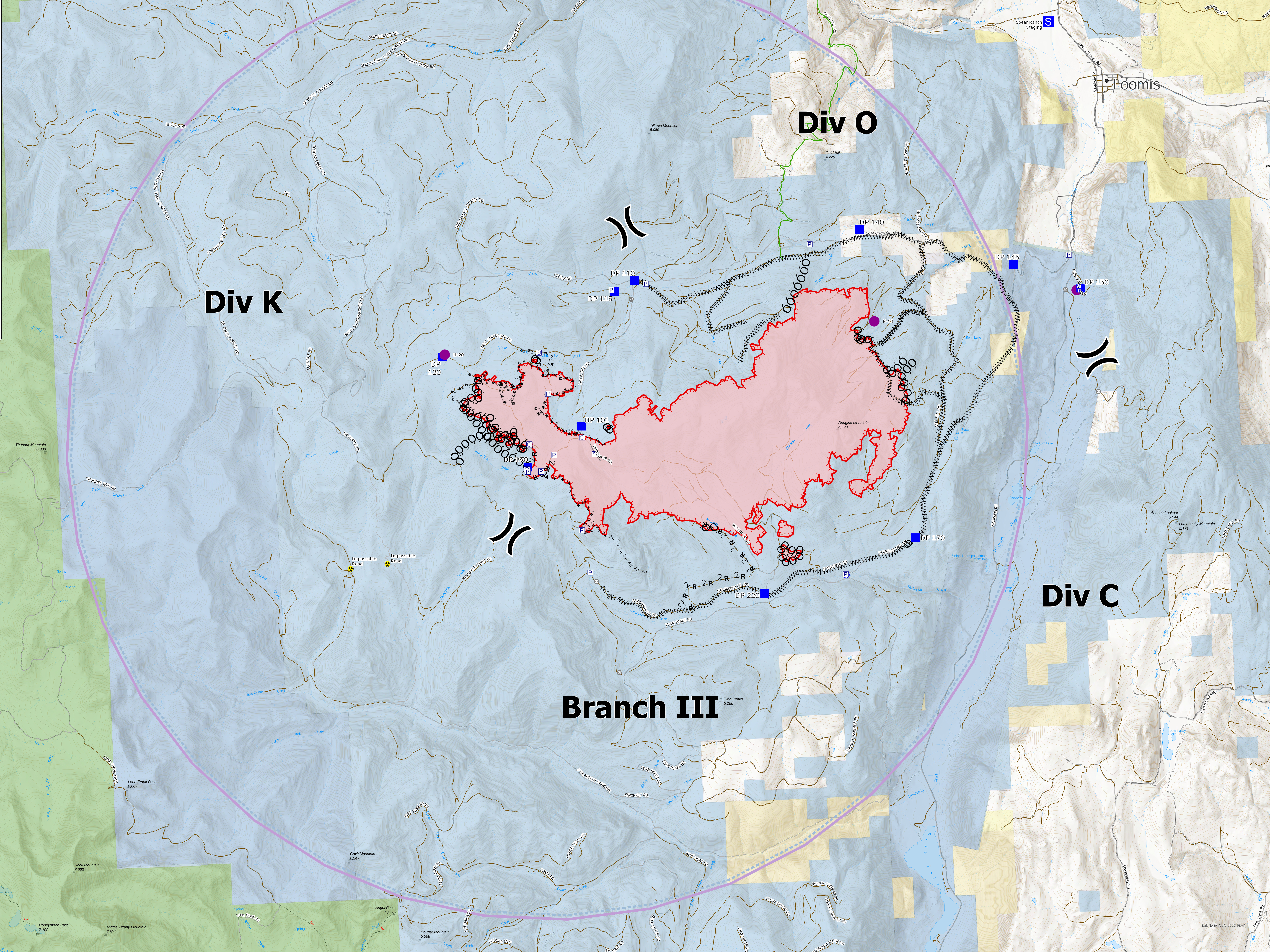
4,861 acres as of 1715 8/18/2021



0 0.5 1
Miles

- Helipoint
- Y Division Break
- Drop Point
- Staging Area
- Gate
- ⚠ Hazard
- 💧 Water Source
- P Pump
- 🚰 Water Tank
- Completed Dozer Line
- MM Completed Fuel Break
- MM Completed Hand Line
- M-M Completed Mixed Construction Line
- R Completed Road as Line
- Other
- Escalade Route
- Fire Edge
- TFR
- Wildfire Daily Fire Perimeter
- Light-Duty Road
- Unimproved Road
- Road Closed
- State Lands
- Bureau of Land Management
- Private or Undetermined
- U.S. Forest Service

OKANOGAN - WENATCHEE NATIONAL FOREST



Div K

Div O

Div C

Branch III

Loomis