

Transportation

Chickadee Creek

WA-NES-002310

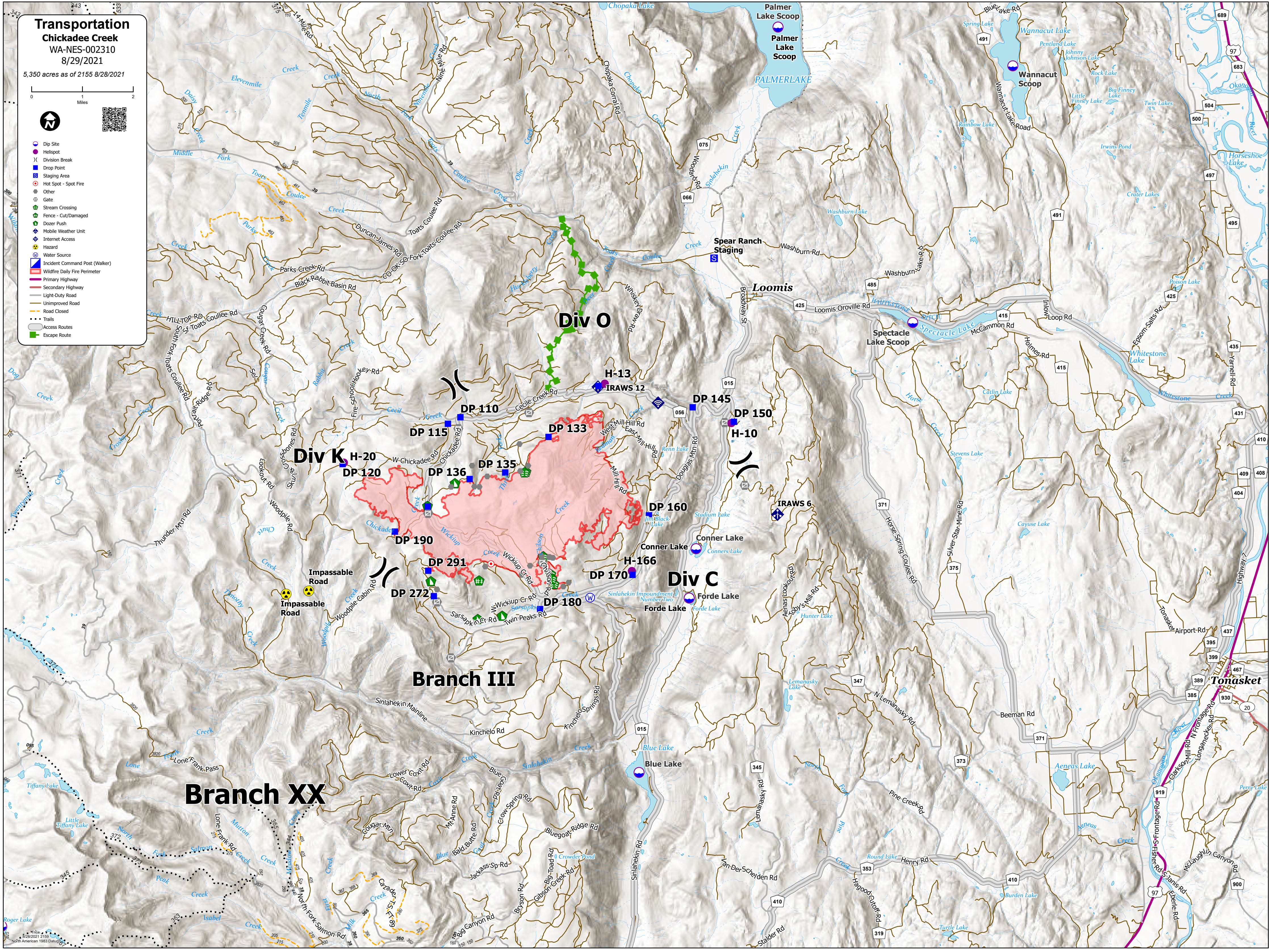
8/29/2021

5,350 acres as of 2155 8/28/2021

0 1 2 Miles



- Dip Site
- Helispot
- Division Break
- Drop Point
- Staging Area
- Hot Spot - Spot Fire
- Other
- Gate
- Stream Crossing
- Fence - Cut/Damaged
- Dozer Push
- Mobile Weather Unit
- Internet Access
- Hazard
- Water Source
- Incident Command Post (Walker)
- Wildfire Daily Fire Perimeter
- Primary Highway
- Secondary Highway
- Light-Duty Road
- Unimproved Road
- Road Closed
- Trails
- Access Routes
- Escape Route



Tonasket