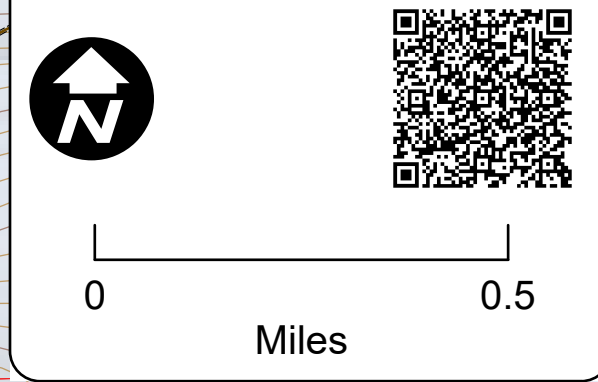
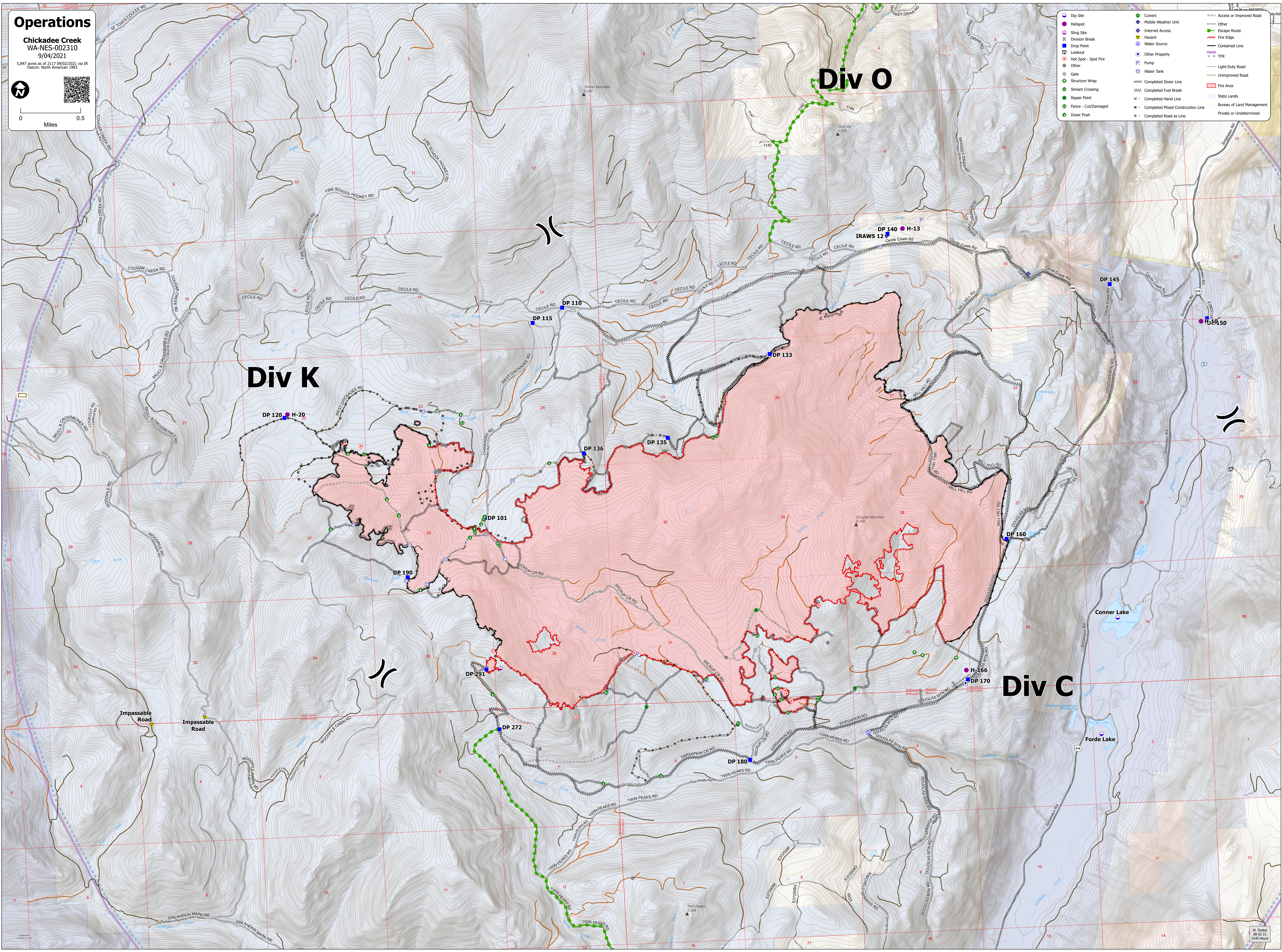


Operations
 Chickadee Creek
 WA-NES-002310
 9/04/2021
 5,847 acres as of 2117 09/02/2021 via IR
 Datum: North American 1983



Dip Site	Culvert	Access or Improved Road
Helipad	Mobile Weather Unit	Other
Sling Site	Internet Access	Escape Route
Division Break	Hazard	Fire Edge
Drop Point	Water Source	Contained Line
Lookout	Other Property	TFR
Hot Spot - Spot Fire	Pump	Light-Duty Road
Other	Water Tank	Unimproved Road
Gate	Completed Dozer Line	Fire Area
Structure Wrap	MMA Completed Fuel Break	State Lands
Stream Crossing	M - Completed Hand Line	Bureau of Land Management
Repair Point	M - Completed Mixed Construction Line	Private or Undetermined
Fence - Cut/Damaged	R - Completed Road as Line	
Dozer Push		



Div 0

Div K

Div C

Impassable Road

Conner Lake

Forde Lake