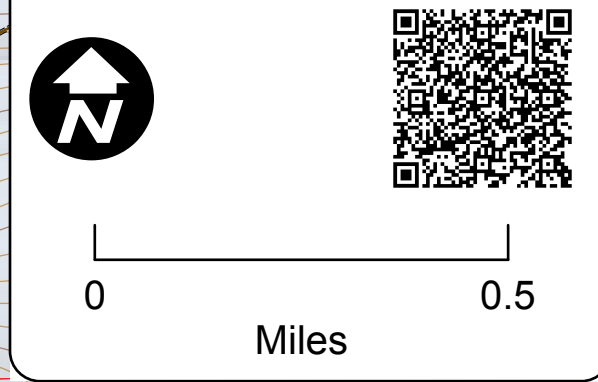
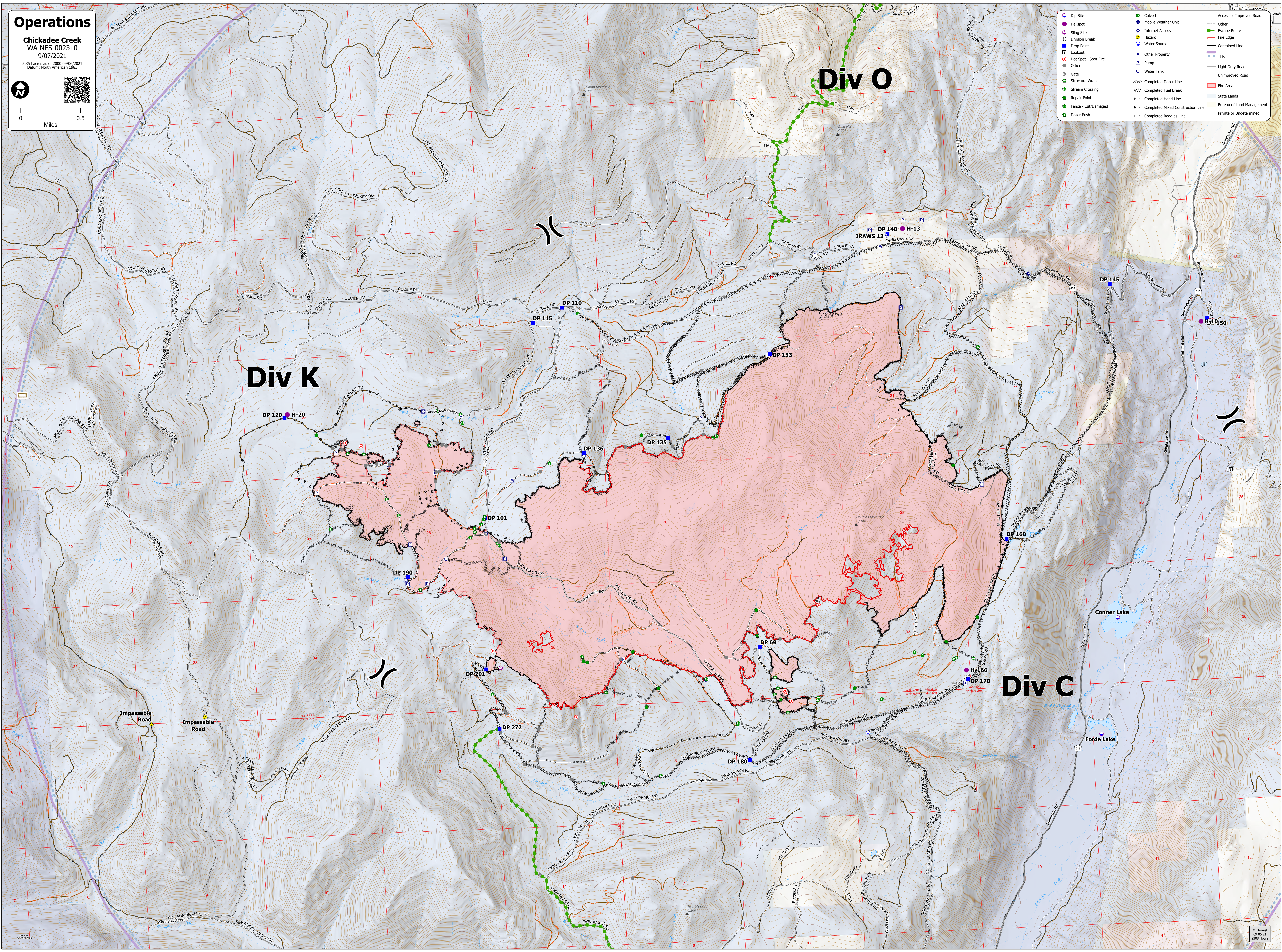


**Operations**  
 Chickadee Creek  
 WA-NES-002310  
 9/07/2021  
 5,854 acres as of 2000 09/06/2021  
 Datum: North American 1983



	Dip Site		Culvert		Access or Improved Road
	Helispot		Mobile Weather Unit		Other
	Sling Site		Internet Access		Escape Route
	Division Break		Hazard		Fire Edge
	Drop Point		Water Source		Contained Line
	Lookout		Other Property		TFR
	Hot Spot - Spot Fire		Pump		Light-Duty Road
	Other		Water Tank		Unimproved Road
	Gate		Completed Dozer Line		State Lands
	Structure Wrap		Completed Fuel Break		Bureau of Land Management
	Stream Crossing		Completed Hand Line		Private or Undetermined
	Repair Point		Completed Mixed Construction Line		
	Fence - Cut/Damaged		Completed Road as Line		
	Dozer Push				



**Div K**

**Div 0**

**Div C**

Impassable Road

Conner Lake

Forde Lake