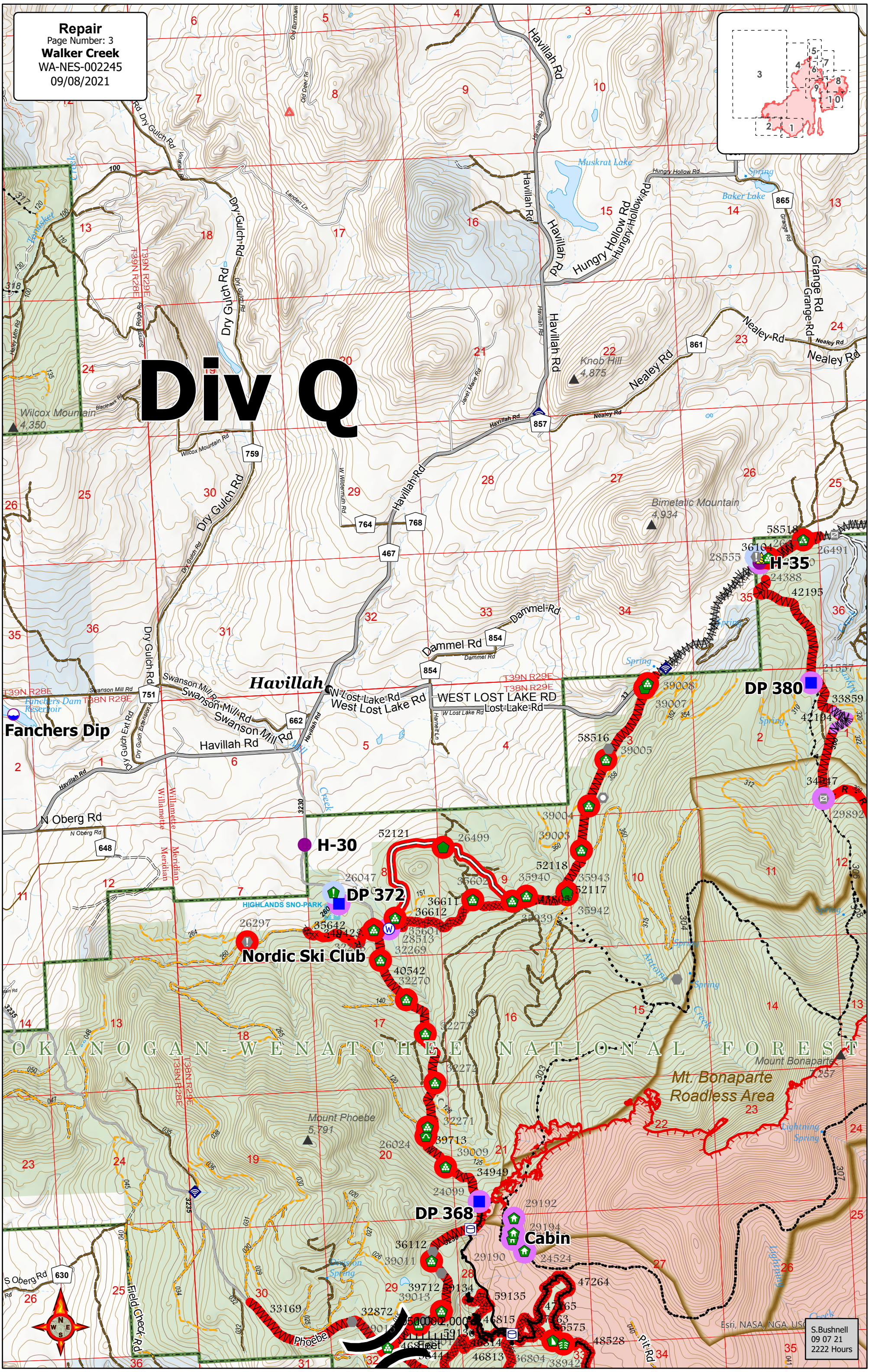


# Div Q



**Fanchers Dip**

**H-30**

**DP 372**

**Nordic Ski Club**

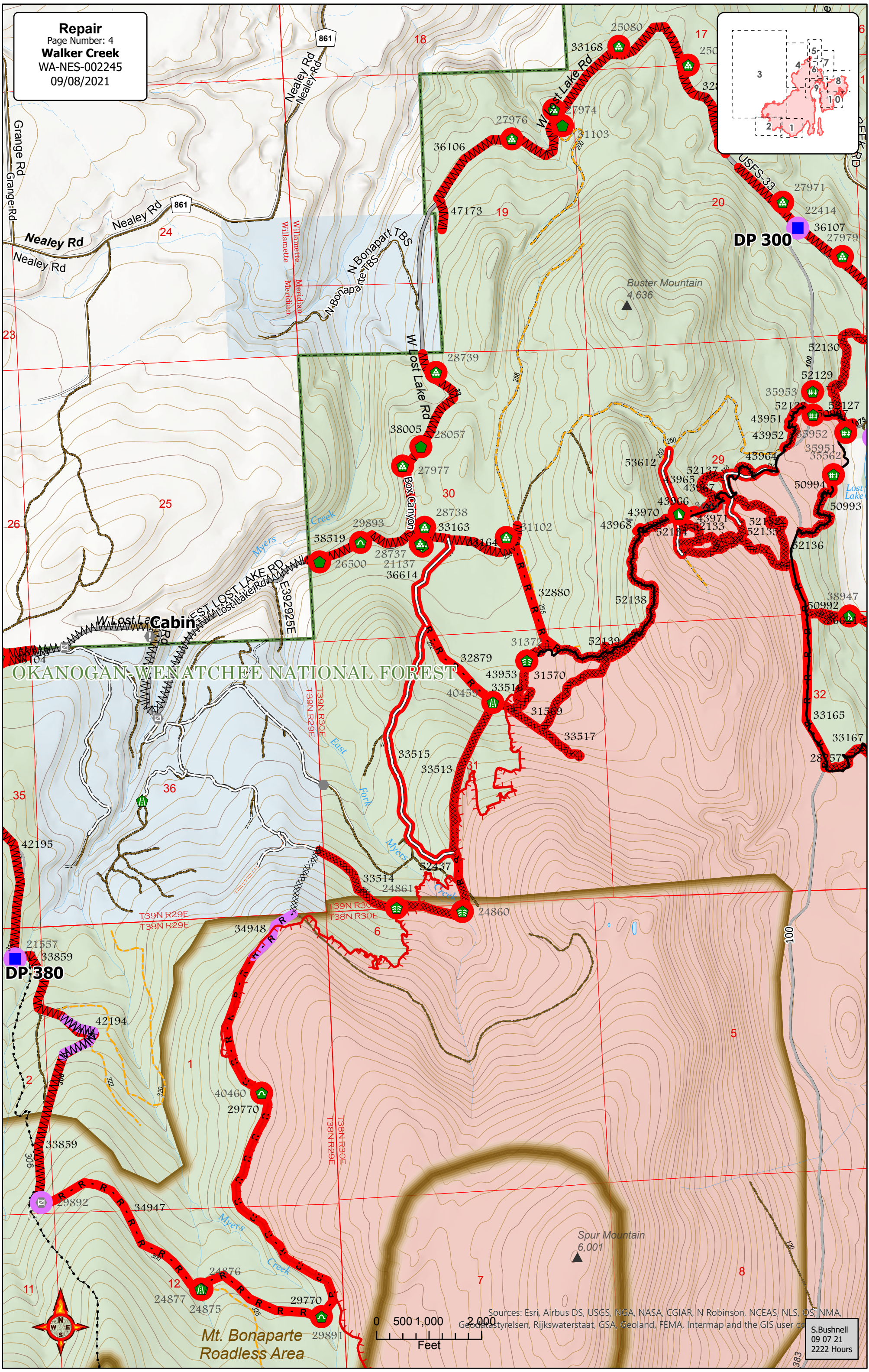
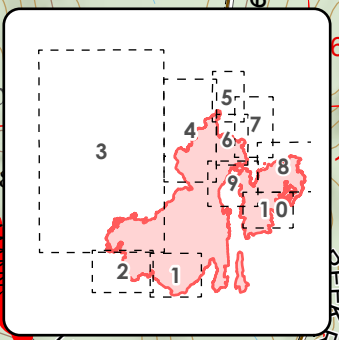
**DP 380**

**DP 368**

**Cabin**

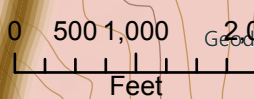
**Mt. Bonaparte Roadless Area**





OKANOGAN-WENATCHEE NATIONAL FOREST

Mt. Bonaparte  
Roadless Area

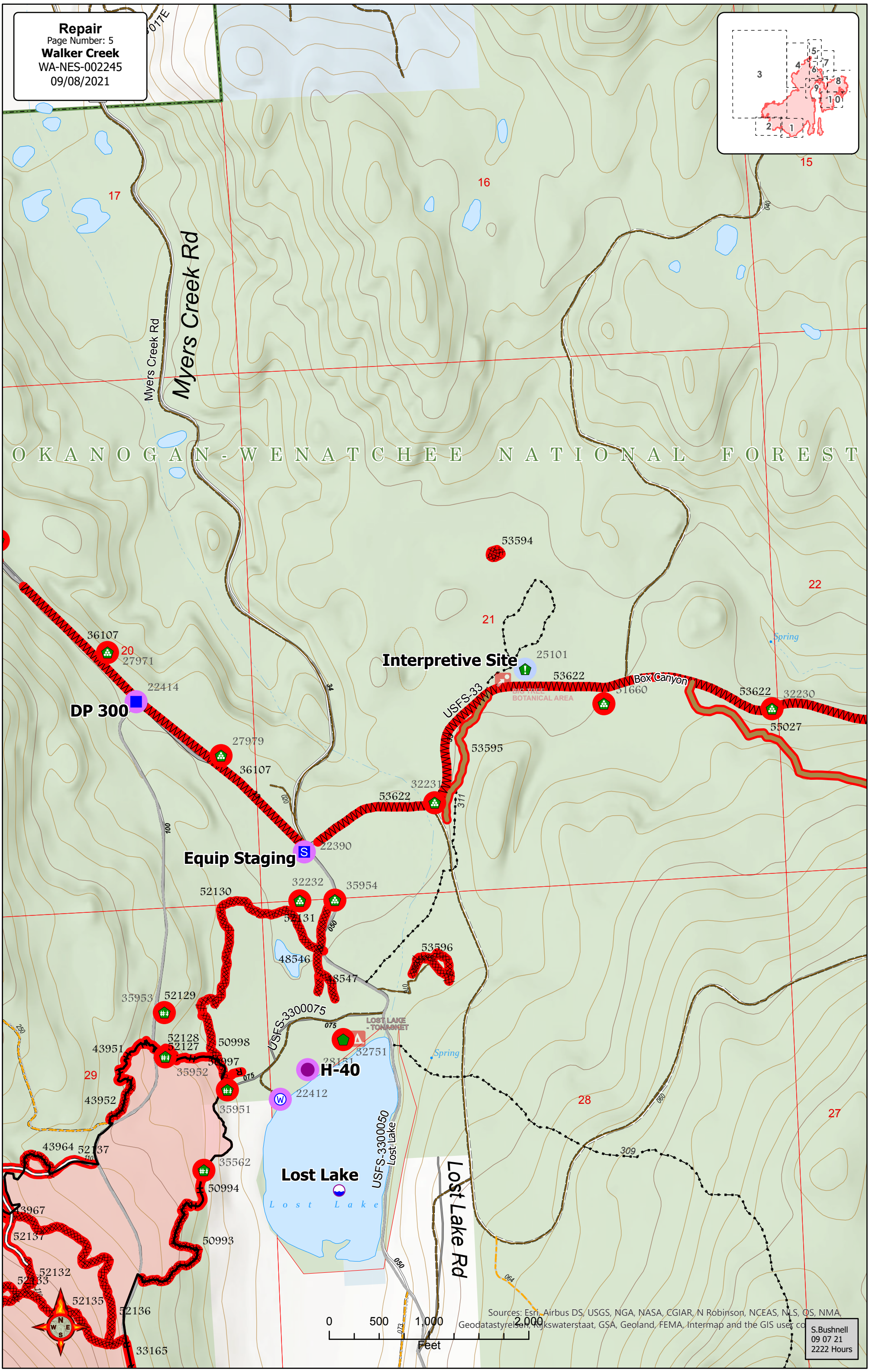
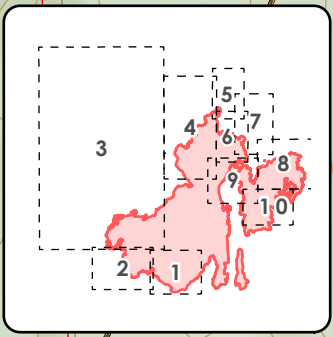


Sources: Esri, Airbus DS, USGS, NGA, NASA, CGIAR, N Robinson, NCEAS, NLS, OS, NMA, Geodatastyrelsen, Rijkswaterstaat, GSA, Geoland, FEMA, Intermap and the GIS user community

S. Bushnell  
09/07/21  
2222 Hours







OKANOGAN - WENATCHEE NATIONAL FOREST

**DP 300**

**Interpretive Site**

**Equip Staging**

**H-40**

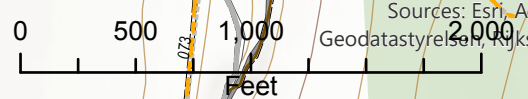
**Lost Lake**

**Lost Lake Rd**

**Myers Creek Rd**

**Box Canyon**

**LOST LAKE - TONASKET**

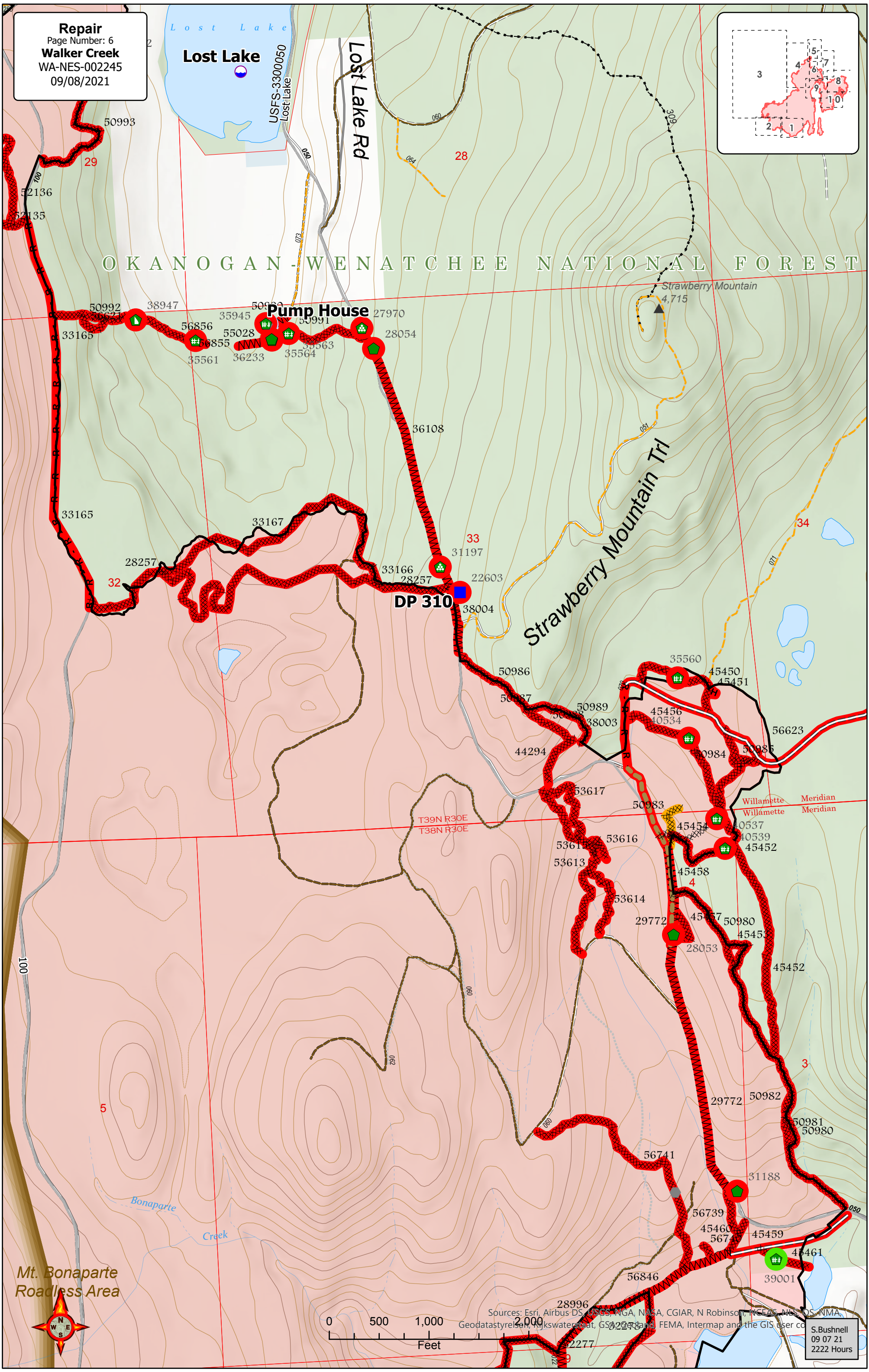
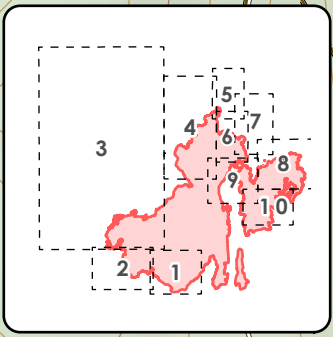


Sources: Esri, Airbus DS, USGS, NGA, NASA, CGIAR, N Robinson, NCEAS, NLS, OS, NMA, Geodatastyrelsen, Rijkswaterstaat, GSA, Geoland, FEMA, Intermap and the GIS user community

S. Bushnell  
09 07 21  
2222 Hours



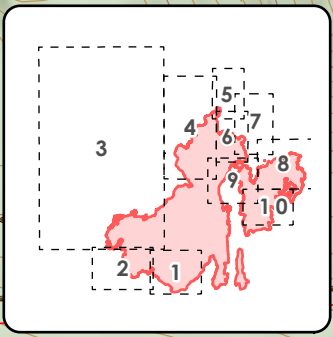
**Repair**  
Page Number: 6  
**Walker Creek**  
WA-NES-002245  
09/08/2021



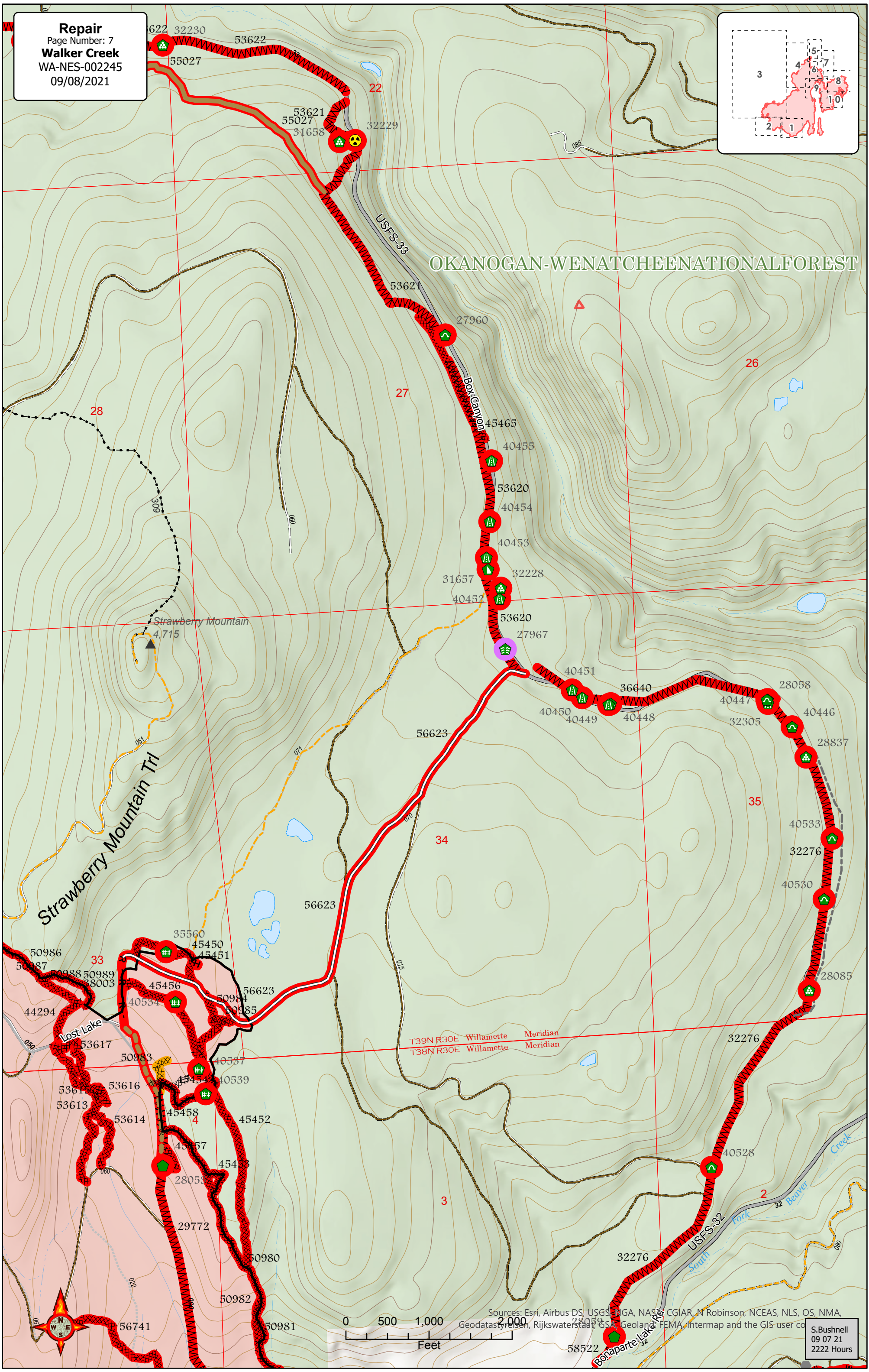
Sources: Esri, Airbus-DS, USGS, NGA, NASA, CGIAR, N Robinson, NCEAS, NLS, OS, NMA, Geodatastyrelsen, Nykswaterstat, GSA, FEMA, Intermap and the GIS user community  
S. Bushnell  
09 07 21  
2222 Hours



**Repair**  
Page Number: 7  
**Walker Creek**  
WA-NES-002245  
09/08/2021



**OKANOGAN-WENATCHEE NATIONAL FOREST**



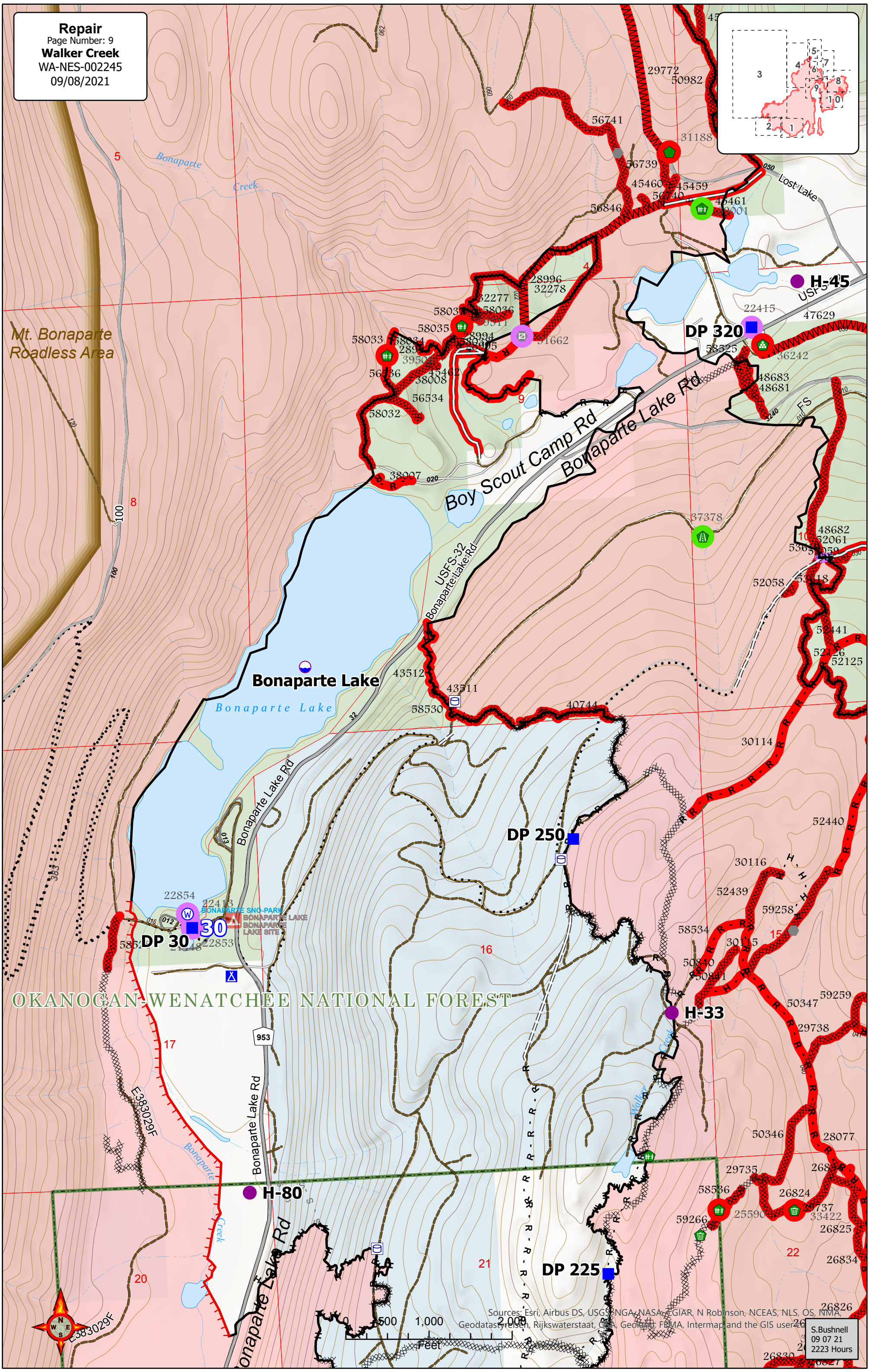
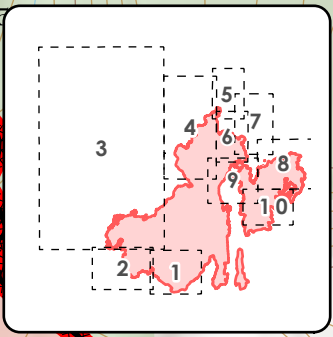
Sources: Esri, Airbus DS, USGS, NGA, NASA, CGIAR, N Robinson, NCEAS, NLS, OS, NMA, Geodatas, Rijkswaterstaat, GSA, Geoland, FEMA, Intermap and the GIS user community

S. Bushnell  
09 07 21  
2222 Hours







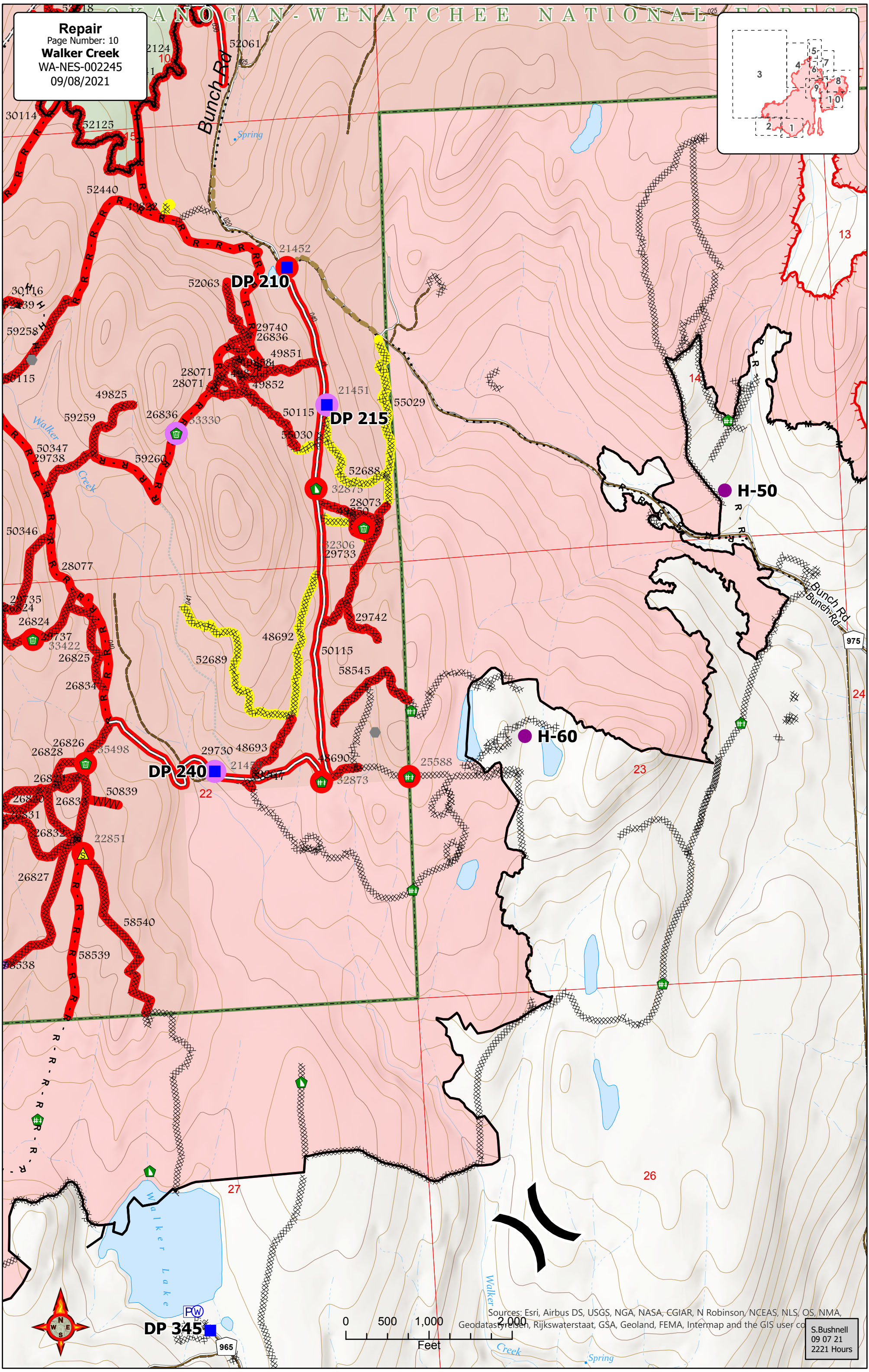
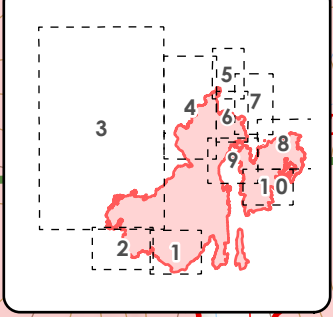


**OKANOGAN-WENATCHEE NATIONAL FOREST**

Sources: Esri, Airbus DS, USGS, NGA, NASA, CGIAR, N Robinson, NCEAS, NLS, OS, NIMA, Geodatas, Usher, Rijkswaterstaat, Geobase, FEMA, Intermap and the GIS user.



**Repair**  
Page Number: 10  
**Walker Creek**  
WA-NES-002245  
09/08/2021



**DP 345**



Sources: Esri, Airbus DS, USGS, NGA, NASA, CGIAR, N Robinson, NCEAS, NLS, OS, NMA, Geodatas, Rijkswaterstaat, GSA, Geoland, FEMA, Intermap and the GIS user community

S. Bushnell  
09 07 21  
2221 Hours



OBJECTID	FC Point Type	Repair Status	Repair Comments
30534	Dozer Push	Repair Needed	30' x 50'
36513	Dozer Push	Repair Needed	Standard 0.3 acre dozer push
36805	Dozer Push	Repair Needed	Standard repair. See suppression repair plan. Approximately 80 x 50 feet
37422	Dozer Push	Repair Needed	
22389	Drop Point	Other - See Comments	
28336	Drop Point	Repair Needed	Standard repair. 50' x 300' seed
30533	Landing or Log Deck	Repair Needed	Standard repair. No timber was stacked here. Just made ready.
36512	Repair Point	Repair Needed	1.5 acre staging area with non fire related logging equipment staged in it. Check with district concerning current or future use of the area prior to standard repair
36808	Repair Point	Repair Needed	Gather hose before beginning dozer repair.
40493	Repair Point	Repair Needed	Remove dam created for pump.
40535	Repair Point	Repair Needed	Replace berm



OBJECTID	FC Point Type	Repair Status	Repair Comments
32306	Clean Up Area	Repair Needed	
33330	Clean Up Area	Unknown	
33422	Clean Up Area	Repair Needed	Clean up hose prior to repair
35498	Clean Up Area	Repair Needed	
32875	Dozer Push	Repair Needed	
21450	Drop Point	Unknown	
21451	Drop Point	Unknown	
21452	Drop Point	Repair Needed	Standard, seeding needed
25588	Fence - Cut/Damaged	Repair Needed	
32873	Fence - Cut/Damaged	Repair Needed	standard
22851	Safety Zone	Repair Needed	Refer to READ



OBJECTID	FC Point Type	Repair Status	Repair Comments
32304	Culvert	Repair Needed	Crushed culvert, will need to be replaced 32' long 18" cmp
30534	Dozer Push	Repair Needed	30' x 50'
36513	Dozer Push	Repair Needed	Standard 0.3 acre dozer push
36804	Dozer Push	Repair Needed	Standard repair. 60' diameter
36805	Dozer Push	Repair Needed	Standard repair. See suppression repair plan. Approximately 80 x 50 feet
28336	Drop Point	Repair Needed	Standard repair. 50' x 300' seed
24515	Gate	No Repair Needed	
32210	Helispot	Repair Needed	Standard repair - move merch. timber to be processed
39013	Landing or Log Deck	Repair Needed	Standard repair
39014	Landing or Log Deck	Repair Needed	Standard repair
39015	Landing or Log Deck	Repair Needed	Standard repair.
35566	Mobile Weather Unit	Unknown	
36808	Repair Point	Repair Needed	Gather hose before beginning dozer repair.
39282	Repair Point	Repair Needed	Spring/ drainage pull fill from rd base
40535	Repair Point	Repair Needed	Replace berm
38942	Stream Crossing	Repair Needed	Excavator work, pull material out of earthen dam, match channel to upstream or downstream size and grade, high priority
39281	Stream Crossing	Repair Needed	Standard. Pull fill return grade



OBJECTID	FC Point Type	Repair Status	Repair Comments
26024	Culvert	Repair Needed	Blocked by fuel break machine activity
36804	Dozer Push	Repair Needed	Standard repair. 60' diameter
21557	Drop Point	Unknown	
24099	Drop Point	Unknown	
24101	Drop Point	Unknown	
35942	Fence - Cut/Damaged	Repair Needed	50 ft 3-strand barbed wire
29892	Gate	Unknown	currently open need to check mvum
24388	Helispot	Unknown	
26490	Landing or Log Deck	Repair Needed	Recontour and seed when ready, possibly plant trees
26491	Landing or Log Deck	Repair Needed	Recontour and seed when ready
32268	Landing or Log Deck	Repair Needed	Recontour and seed when ready
32269	Landing or Log Deck	Repair Needed	Recontour and seed when ready
32270	Landing or Log Deck	Repair Needed	Recontour and seed when ready
32271	Landing or Log Deck	Repair Needed	Recontour and seed when ready
32272	Landing or Log Deck	Repair Needed	
32273	Landing or Log Deck	Repair Needed	
35601	Landing or Log Deck	Repair Needed	Standard repair
35602	Landing or Log Deck	Repair Needed	Standard repair
35939	Landing or Log Deck	Repair Needed	Standard repair
35940	Landing or Log Deck	Repair Needed	Standard repair
39003	Landing or Log Deck	Repair Needed	Standard repair
39004	Landing or Log Deck	Repair Needed	Standard repair
39005	Landing or Log Deck	Repair Needed	Standard repair
39008	Landing or Log Deck	Repair Needed	Standard repair
39009	Landing or Log Deck	Repair Needed	Standard repair
39011	Landing or Log Deck	Repair Needed	Standard repair
39013	Landing or Log Deck	Repair Needed	Standard repair
39014	Landing or Log Deck	Repair Needed	Standard repair
39015	Landing or Log Deck	Repair Needed	Standard repair.
26499	Repair Point	Repair Needed	Standard repair. Repair drainage feature to original shape. 3 more rolling dips east of this dip to be included in the repairs of these drainage features.
35943	Repair Point	Repair Needed	Standard repair. Fuel break. End of dozer push.
39007	Repair Point	Repair Needed	Block access to old skid road used
26047	Resource Location	No Repair Needed	
26470	Safety Zone	Repair Needed	Recontour and seed when ready, possibly plant trees, line safety zone with boulder obstructions to keep from turning into parking lot/dispersed camping
38942	Stream Crossing	Repair Needed	Excavator work, pull material out of earthen dam, match channel to upstream or downstream size and grade, high priority
29190	Structure Wrap	Unknown	
29191	Structure Wrap	Unknown	
29192	Structure Wrap	Unknown	
29194	Structure Wrap	Unknown	
24524	Value at Risk	Unknown	
26297	Value at Risk	Repair Needed	Standard Repair, pull berms and blend disturbed areas around trees behind building and around building
28555	Value at Risk	No Repair Needed	
28513	Water Source	Unknown	



OBJECTID	FC Point Type	Repair Status	Repair Comments
29891	Culvert	Repair Needed	Water bar west approach to stream crossing. east okay water bar if time allows
29893	Culvert	Repair Needed	Compromised from shaded full break replace 16", unknown length. Need to find joint cannot replace down stream end
40460	Culvert	Repair Needed	Crushed inlet. Buried outlet. Clear out
36241	Dozer Push	Repair Needed	
38947	Dozer Push	Repair Needed	Standard repair.
21557	Drop Point	Unknown	
22414	Drop Point	Unknown	
21137	Fence - Cut/Damaged	Repair Needed	Standard
35562	Fence - Cut/Damaged	Repair Needed	
35951	Fence - Cut/Damaged	Repair Needed	Standard repair.
35952	Fence - Cut/Damaged	Repair Needed	Standard repair.
35953	Fence - Cut/Damaged	Repair Needed	standard
29892	Gate	Unknown	currently open need to check mvum
25080	Landing or Log Deck	Repair Needed	Recontour and seed when ready. Product of completed fuel break
25081	Landing or Log Deck	Repair Needed	Recontour and seed when ready. Product of completed fuel break
25082	Landing or Log Deck	Repair Needed	Recontour and seed when ready
26491	Landing or Log Deck	Repair Needed	Recontour and seed when ready
27971	Landing or Log Deck	Repair Needed	Standard repair. Recontour and seed when ready
27974	Landing or Log Deck	Repair Needed	Recontour and seed when ready
27976	Landing or Log Deck	Repair Needed	Recontour and seed when ready
27977	Landing or Log Deck	Repair Needed	Recontour and seed when ready
27979	Landing or Log Deck	Repair Needed	Standard repair. Recontour and seed when ready
28737	Landing or Log Deck	Repair Needed	Recontour and seed when ready
28738	Landing or Log Deck	Repair Needed	Recontour and seed when ready
28739	Landing or Log Deck	Repair Needed	Recontour and seed when ready
31102	Landing or Log Deck	Repair Needed	Recontour and seed when ready
26500	Repair Point	Repair Needed	Ground baserecountour. Logging on steep slope, soil disturbance 55% slope
28057	Repair Point	Repair Needed	Road damage, refer to engineering
31103	Repair Point	Repair Needed	Return road barrier (boulders). Road barrier boulders moved
24875	Road Repair	Repair Needed	Fill in dip on top of the culvert to avoid water routing. Water bar both approaches to stream crossing.
24876	Road Repair	Repair Needed	Fill in dip on top of the culvert to avoid water routing. Water bar both approaches to stream crossing.
24877	Road Repair	Repair Needed	Fill in ditch on top culvert & water bar both approaches to stream crossing
40459	Road Repair	Repair Needed	Buried and crushed culvert, clear inlet and assess damage, replace or repair as needed
24860	Stream Crossing	Repair Needed	Remove road fill/dozer push from stream, on upstream side, cleanup pipe inlet blockage
24861	Stream Crossing	Repair Needed	Cleanup outlet
31372	Stream Crossing	Repair Needed	Refer to READ
22412	Water Source	Unknown	



OBJECTID	FC Point Type	Repair Status	Repair Comments
22414	Drop Point	Unknown	
35562	Fence - Cut/Damaged	Repair Needed	
35951	Fence - Cut/Damaged	Repair Needed	Standard repair.
35952	Fence - Cut/Damaged	Repair Needed	Standard repair.
35953	Fence - Cut/Damaged	Repair Needed	standard
28151	Helispot	Unknown	
25082	Landing or Log Deck	Repair Needed	Recontour and seed when ready
27971	Landing or Log Deck	Repair Needed	Standard repair. Recontour and seed when ready
27979	Landing or Log Deck	Repair Needed	Standard repair. Recontour and seed when ready
31660	Landing or Log Deck	Repair Needed	Recontour and seed when ready, scratch out skid trails
32230	Landing or Log Deck	Repair Needed	Standard repair.
32231	Landing or Log Deck	Repair Needed	Standard Repair
32232	Landing or Log Deck	Repair Needed	Standard repair.
35954	Landing or Log Deck	Repair Needed	Firewood deck. All snags
32751	Repair Point	Repair Needed	Check with district, clean slash piles
25101	Resource Location	No Repair Needed	
22390	Staging Area	Unknown	
22412	Water Source	Unknown	



OBJECTID	FC Point Type	Repair Status	Repair Comments
38947	Dozer Push	Repair Needed	Standard repair.
22603	Drop Point	Repair Needed	Seed; 2.5 acres
35560	Fence - Cut/Damaged	Repair Needed	
35561	Fence - Cut/Damaged	Repair Needed	
35562	Fence - Cut/Damaged	Repair Needed	
35563	Fence - Cut/Damaged	Repair Needed	Standard repair. 4 strand barbed wire with spacer. ~ 60 ft
35564	Fence - Cut/Damaged	Repair Needed	Standard repair. 3 strand barbed wire.
35945	Fence - Cut/Damaged	Repair Needed	4 strand barbed wire. Damaged in multiple places around pump house. Unable to determine length due to multiple log trees still on ground.
39001	Fence - Cut/Damaged	Completed - Inspected	Might need access if repair on private happens
40534	Fence - Cut/Damaged	Repair Needed	2 T-posts. 30' 4 strands of wire
40537	Fence - Cut/Damaged	Repair Needed	Two T posts. 4 strand fence. 50 feet
40539	Fence - Cut/Damaged	Repair Needed	1 T-post. 20' four strand wire
27970	Landing or Log Deck	Repair Needed	Standard repair.
31197	Landing or Log Deck	Repair Needed	Standard repair.
28053	Repair Point	Repair Needed	Seed about an acre
28054	Repair Point	Repair Needed	Seed skid trails
31188	Repair Point	Repair Needed	Seed about an acre
36233	Repair Point	Repair Needed	Cut water pipe going to Lost Lake pump house to the north.
25118	Value at Risk	No Repair Needed	



OBJECTID	FC Point Type	Repair Status	Repair Comments
27960	Culvert	Repair Needed	Unbury culvert
40446	Culvert	Repair Needed	Clear out buried inlet
40447	Culvert	Repair Needed	Clear out buried inlet of culvert
40448	Culvert	Repair Needed	Clear out inlet and outlet
40528	Culvert	Repair Needed	Pull slash out of culvert.
40530	Culvert	Repair Needed	Pull slash out of opening.
40533	Culvert	Repair Needed	Pull slash and debris from opening
31657	Dozer Push	Repair Needed	Standard repair.
35560	Fence - Cut/Damaged	Repair Needed	
40534	Fence - Cut/Damaged	Repair Needed	2 T-posts. 30' 4 strands of wire
40537	Fence - Cut/Damaged	Repair Needed	Two T posts. 4 strand fence. 50 feet
40539	Fence - Cut/Damaged	Repair Needed	1 T-post. 20' four strand wire
28085	Landing or Log Deck	Repair Needed	Standard repair. 1.5 acres
28837	Landing or Log Deck	Repair Needed	Standard repair. Unprocessed logs on fire side of FB
31658	Landing or Log Deck	Repair Needed	Standard repair.
31660	Landing or Log Deck	Repair Needed	Recontour and seed when ready, scratch out skid trails
32228	Landing or Log Deck	Repair Needed	Standard repair.
32229	Landing or Log Deck	Repair Needed	Standard repair.
32230	Landing or Log Deck	Repair Needed	Standard repair.
28053	Repair Point	Repair Needed	Seed about an acre
28058	Repair Point	Repair Needed	Scratch out skid trails and seed where possible
28059	Repair Point	Repair Needed	25 mph sign is down
32305	Road Repair	Repair Needed	250 cubic yards needed, grader, tender, shoulder removed 150' length at least 3' of road and shoulder. nOt standards
40449	Road Repair	Repair Needed	Sliver fill, dump truck, grader, water truck. 100 cubic yards
40450	Road Repair	Repair Needed	TBD, this a steep, deep repair, more measurements needed. Skidsteer, cat needed. Sliver fill, dump truck, grader, water. At least 200 cubic yards material.
40451	Road Repair	Repair Needed	Sliver fill, dump truck, grader, water truck. 70' long section , downhill side, 70 cubic yards material for downhill sides of road.
40452	Road Repair	Repair Needed	Sliver fill, dump truck, grader, water truck. 70' long section , downhill side, 70 cubic yards material for downhill sides of road.
40453	Road Repair	Repair Needed	Sliver fill, dump truck, grader, water truck, downhill side, 50 cubic yards material for downhill sides of road.
40454	Road Repair	Repair Needed	Sliver fill, dump truck, grader, water truck, downhill side, 100 cubic yards material for downhill sides of road.
40455	Road Repair	Repair Needed	Sliver fill, dump truck, grader, water truck, downhill side, 80 cubic yards material for downhill sides of road.
27967	Stream Crossing	Unknown	



OBJECTID	FC Point Type	Repair Status	Repair Comments
32306	Clean Up Area	Repair Needed	
33330	Clean Up Area	Unknown	
40446	Culvert	Repair Needed	Clear out buried inlet
40447	Culvert	Repair Needed	Clear out buried inlet of culvert
40448	Culvert	Repair Needed	Clear out inlet and outlet
40528	Culvert	Repair Needed	Pull slash out of culvert.
40530	Culvert	Repair Needed	Pull slash out of opening.
40533	Culvert	Repair Needed	Pull slash and debris from opening
31657	Dozer Push	Repair Needed	Standard repair.
32875	Dozer Push	Repair Needed	
36277	Dozer Push	Repair Needed	
36278	Dozer Push	Repair Needed	Standard repair.
36279	Dozer Push	Repair Needed	Standard repair.
39601	Dozer Push	Repair Needed	Standard repair.
21450	Drop Point	Unknown	
21451	Drop Point	Unknown	
21452	Drop Point	Repair Needed	Standard, seeding needed
25588	Fence - Cut/Damaged	Repair Needed	
32873	Fence - Cut/Damaged	Repair Needed	standard
36281	Fence - Cut/Damaged	Repair Needed	
28085	Landing or Log Deck	Repair Needed	Standard repair. 1.5 acres
28837	Landing or Log Deck	Repair Needed	Standard repair. Unprocessed logs on fire side of FB
32228	Landing or Log Deck	Repair Needed	Standard repair.
28058	Repair Point	Repair Needed	Scratch out skid trails and seed where possible
28059	Repair Point	Repair Needed	25 mph sign is down
30494	Repair Point	Repair Needed	Standard Repair. Log deck moved. Slash pile left
32305	Road Repair	Repair Needed	250 cubic yards needed, grader, tender, shoulder removed 150' length at least 3' of road and shoulder. nOt standards
40449	Road Repair	Repair Needed	Sliver fill, dump truck, grader, water truck. 100 cubic yards
40450	Road Repair	Repair Needed	TBD, this a steep, deep repair, more measurements needed. Skidsteer, cat needed. Sliver fill, dump truck, grader, water. At least 200 cubic yards material.
40451	Road Repair	Repair Needed	Sliver fill, dump truck, grader, water truck. 70' long section , downhill side, 70 cubic yards material for downhill sides of road.
40452	Road Repair	Repair Needed	Sliver fill, dump truck, grader, water truck. 70' long section , downhill side, 70 cubic yards material for downhill sides of road.
40453	Road Repair	Repair Needed	Sliver fill, dump truck, grader, water truck, downhill side, 50 cubic yards material for downhill sides of road.
40454	Road Repair	Repair Needed	Sliver fill, dump truck, grader, water truck, downhill side, 100 cubic yards material for downhill sides of road.
27967	Stream Crossing	Unknown	



OBJECTID	FC Point Type	Repair Status	Repair Comments
33422	Clean Up Area	Repair Needed	Clean up hose prior to repair
35498	Clean Up Area	Repair Needed	
21448	Drop Point	Unknown	
22415	Drop Point	Unknown	
22853	Drop Point	Unknown	
25590	Fence - Cut/Damaged	Repair Needed	
39001	Fence - Cut/Damaged	Completed - Inspected	Might need access if repair on private happens
39508	Fence - Cut/Damaged	Repair Needed	Standard, T post removed and lost
39511	Fence - Cut/Damaged	Repair Needed	Standard
31662	Gate	Unknown	
36242	Landing or Log Deck	Repair Needed	Standard repair
31188	Repair Point	Repair Needed	Seed about an acre
37378	Road Repair	Completed - Inspected	
22413	Water Source	Unknown	
22854	Water Source	Unknown	



OBJECTID	FC Line Type	Repair Status	Repair Comments
52120	Access or Improved Road	Repair Needed	Standard repair
54699	Access or Improved Road	Repair Needed	Standard class 2
54701	Access or Improved Road	Repair Needed	Standard, powder special
54705	Access or Improved Road	Repair Needed	Standard
54714	Access or Improved Road	Repair Needed	Standard check with lighting timber sale
54715	Access or Improved Road	Repair Needed	Standard
32870	Completed Dozer Line	Repair Needed	Standard repair
42965	Completed Dozer Line	Repair Needed	176
42967	Completed Dozer Line	Repair Needed	177
42968	Completed Dozer Line	Repair Needed	Standard, lots of spurs, circles
42970	Completed Dozer Line	Repair Needed	
42971	Completed Dozer Line	Repair Needed	
42972	Completed Dozer Line	Repair Needed	
42973	Completed Dozer Line	Repair Needed	
44782	Completed Dozer Line	Repair Needed	Standard repair.
44784	Completed Dozer Line	Repair Needed	Standard repair. Connects two roads.
49480	Completed Dozer Line	Repair Needed	Standard
50112	Completed Dozer Line	Repair Needed	Standard
50113	Completed Dozer Line	Repair Needed	Standard
50114	Completed Dozer Line	Repair Needed	Standard repair. Check with district fuels/ timber
51148	Completed Dozer Line	Repair Needed	Standard repair
51151	Completed Dozer Line	Repair Needed	Standard repair. CHECK ROAD LAYER AND LIGHT SALE
52119	Completed Dozer Line	Repair Needed	Standard repair. Dozer walked approx. 15 ft beyond line.
54697	Completed Dozer Line	Repair Needed	Standard 75' section do 20' wide line
54698	Completed Dozer Line	Repair Needed	Standard,
54700	Completed Dozer Line	Repair Needed	Standard, moderate, the road that shows on the layer underneath does not exist
54702	Completed Dozer Line	Repair Needed	Standard
54703	Completed Dozer Line	Repair Needed	Standard
54704	Completed Dozer Line	Repair Needed	Standard, low for machine high for seed two blades wide, around slash piles
54706	Completed Dozer Line	Repair Needed	Standard
55576	Completed Dozer Line	Repair Needed	Standard repair
55577	Completed Dozer Line	Repair Needed	Standard repair
55578	Completed Dozer Line	Repair Needed	Standard repair
55579	Completed Dozer Line	Repair Needed	Standard repair
55651	Completed Dozer Line	Repair Needed	Standard
55652	Completed Dozer Line	Repair Needed	Standard
55654	Completed Dozer Line	Repair Needed	Standard repair. See suppression repair plan.
55655	Completed Dozer Line	Repair Needed	Standard, moderate need
55657	Completed Dozer Line	Repair Needed	Standard
55658	Completed Dozer Line	Repair Needed	Standard
56619	Completed Dozer Line	Repair Needed	Standard
59137	Completed Dozer Line	Repair Needed	Standard repair
38445	Completed Fuel Break	Repair Needed	Standard
38446	Completed Fuel Break	Repair Needed	Standard. Machine cut fuel break. Logs not yet decked
55653	Completed Fuel Break	Repair Needed	Standard ; many decks need chipped or other solution.
42966	Completed Hand Line	Repair Needed	This is the fire edge. No fire to the south of the line on the east side of the road. Very light in riparian, waterbar only where line was scratchedh
44783	Completed Road as Line	Repair Needed	Outboard side cast
44785	Completed Road as Line	Repair Needed	Standard repair. Completed fuel break. Standard repair. Chipping, scattering, pile and burn option on hand slash. Grade road.
58542	Completed Road as Line	Repair Needed	



OBJECTID	FC Line Type	Repair Status	Repair Comments
29730	Access or Improved Road	Repair Needed	Standard Repair
50115	Access or Improved Road	Repair Needed	Standard
52061	Access or Improved Road	Repair Needed	Boulders need to put back to close road, standard
48692	Completed Dozer Line	In Progress	
49822	Completed Dozer Line	In Progress	Seed?
49850	Completed Dozer Line	In Progress	standard. water bars in place, berm pushed back and brushed.
52688	Completed Dozer Line	In Progress	Standard, equipment done needs seeding
52689	Completed Dozer Line	In Progress	Standard, needs seeding
55029	Completed Dozer Line	In Progress	Standard, Seeding?
55030	Completed Dozer Line	In Progress	Standard, heavy slash will be hard to seed
26824	Completed Dozer Line	Repair Needed	Standard low priority
26825	Completed Dozer Line	Repair Needed	Standard
26826	Completed Dozer Line	Repair Needed	Standard Repair, Some sections are on non system roads
26827	Completed Dozer Line	Repair Needed	Standard Repair
26828	Completed Dozer Line	Repair Needed	Standard
26829	Completed Dozer Line	Repair Needed	113 Standard Repair
26830	Completed Dozer Line	Repair Needed	Standard Repair
26831	Completed Dozer Line	Repair Needed	116 Standard Repair
26832	Completed Dozer Line	Repair Needed	Standard Repair
26833	Completed Dozer Line	Repair Needed	114 Standard Repair
28071	Completed Dozer Line	Repair Needed	Standard
28073	Completed Dozer Line	Repair Needed	Standard Repair
29733	Completed Dozer Line	Repair Needed	Standard Low priority, seeding needed
29735	Completed Dozer Line	Repair Needed	Standard
29738	Completed Dozer Line	Repair Needed	Standard
29740	Completed Dozer Line	Repair Needed	Standard
29742	Completed Dozer Line	Repair Needed	Standard Repair
30115	Completed Dozer Line	Repair Needed	Hazard trees everywhere , lots of downfall and other debris no mechanical repair needed
30116	Completed Dozer Line	Repair Needed	Standard
48682	Completed Dozer Line	Repair Needed	Standard. GPS track of previously represented dozer line
48690	Completed Dozer Line	Repair Needed	
48693	Completed Dozer Line	Repair Needed	Standard
49824	Completed Dozer Line	Repair Needed	
49825	Completed Dozer Line	Repair Needed	
49826	Completed Dozer Line	Repair Needed	Standard
49851	Completed Dozer Line	Repair Needed	Standard
49852	Completed Dozer Line	Repair Needed	Standard
49853	Completed Dozer Line	Repair Needed	
50346	Completed Dozer Line	Repair Needed	Standard,
52058	Completed Dozer Line	Repair Needed	DI around slash pile
52063	Completed Dozer Line	Repair Needed	Standard or seed only
52124	Completed Dozer Line	Repair Needed	Standard
52125	Completed Dozer Line	Repair Needed	Standard
52126	Completed Dozer Line	Repair Needed	Standard
52439	Completed Dozer Line	Repair Needed	Standard Low priority
53618	Completed Dozer Line	Repair Needed	Standard
58540	Completed Dozer Line	Repair Needed	Standard Repair
58545	Completed Dozer Line	Repair Needed	Standard Repair
58547	Completed Dozer Line	Repair Needed	
59258	Completed Dozer Line	Repair Needed	repair very low priority, rocky lots of wood on it all ready, smaller side cast
59259	Completed Dozer Line	Repair Needed	Pull berms, seed water bar where necessary, do not pull slash in case it was a road bed
59267	Completed Dozer Line	Repair Needed	Standard
29737	Completed Dozer Line	Unknown	
58538	Completed Dozer Line	Unknown	107
50839	Completed Fuel Break	Repair Needed	Excavator made line ,low priority
26834	Completed Road as Line	Repair Needed	97, check nvum map, standard
26836	Completed Road as Line	Repair Needed	Standard
28077	Completed Road as Line	Repair Needed	81, nvum
30114	Completed Road as Line	Repair Needed	Standard
50347	Completed Road as Line	Repair Needed	Standard
52440	Completed Road as Line	Repair Needed	Standard
52441	Completed Road as Line	Repair Needed	Standard also needs chipping or scattering of windrow
58539	Completed Road as Line	Repair Needed	Standard Repair
59260	Completed Road as Line	Repair Needed	Standard



OBJECTID	FC Line Type	Repair Status	Repair Comments
52120	Access or Improved Road	Repair Needed	Standard repair
54699	Access or Improved Road	Repair Needed	Standard class 2
54701	Access or Improved Road	Repair Needed	Standard, powder special
54705	Access or Improved Road	Repair Needed	Standard
55648	Access or Improved Road	Repair Needed	Standard repair. Dozer walked down, pushed trees and veg to open. Berm removed at gate at perimeter.
57340	Completed Dozer Line	In Progress	Needs seeding
32870	Completed Dozer Line	Repair Needed	Standard repair
42965	Completed Dozer Line	Repair Needed	176
42968	Completed Dozer Line	Repair Needed	Standard, lots of spurs, circles
42973	Completed Dozer Line	Repair Needed	
44782	Completed Dozer Line	Repair Needed	Standard repair.
44784	Completed Dozer Line	Repair Needed	Standard repair. Connects two roads.
46813	Completed Dozer Line	Repair Needed	Standard repair. Old road opened up with dozer.
46814	Completed Dozer Line	Repair Needed	Standard repair
46815	Completed Dozer Line	Repair Needed	Standard repair
47263	Completed Dozer Line	Repair Needed	Standard repair
47264	Completed Dozer Line	Repair Needed	Standard repair. Wet area at the very top of loop.
47265	Completed Dozer Line	Repair Needed	Standard Repair
48528	Completed Dozer Line	Repair Needed	Standard
48529	Completed Dozer Line	Repair Needed	Standard
49480	Completed Dozer Line	Repair Needed	Standard
49481	Completed Dozer Line	Repair Needed	Standard
50112	Completed Dozer Line	Repair Needed	Standard
50113	Completed Dozer Line	Repair Needed	Standard
50114	Completed Dozer Line	Repair Needed	Standard repair. Check with district fuels/ timber
51148	Completed Dozer Line	Repair Needed	Standard repair
51151	Completed Dozer Line	Repair Needed	Standard repair. CHECK ROAD LAYER AND LIGHT SALE
54698	Completed Dozer Line	Repair Needed	Standard,
54700	Completed Dozer Line	Repair Needed	Standard, moderate, the road that shows on the layer underneath does not exist
54702	Completed Dozer Line	Repair Needed	Standard
54703	Completed Dozer Line	Repair Needed	Standard
54704	Completed Dozer Line	Repair Needed	Standard, low for machine high for seed two blades wide, around slash piles
55575	Completed Dozer Line	Repair Needed	Standard repair. See suppression repair plan.
55577	Completed Dozer Line	Repair Needed	Standard repair
55651	Completed Dozer Line	Repair Needed	Standard
57338	Completed Dozer Line	Repair Needed	Mix of blade up blade down standard where blade down
57339	Completed Dozer Line	Repair Needed	Standard
59134	Completed Dozer Line	Repair Needed	Standard repair.
59135	Completed Dozer Line	Repair Needed	Standard repair.
59136	Completed Dozer Line	Repair Needed	Standard repair
32872	Completed Fuel Break	Repair Needed	Standard Repair
33169	Completed Fuel Break	Repair Needed	Standard Repair
36637	Completed Fuel Break	Repair Needed	Standard repair.
38444	Completed Fuel Break	Repair Needed	Standard repair
38445	Completed Fuel Break	Repair Needed	Standard
38446	Completed Fuel Break	Repair Needed	Standard. Machine cut fuel break. Logs not yet decked
39712	Completed Fuel Break	Repair Needed	Standard repair
46816	Completed Fuel Break	Repair Needed	Standard repair
55653	Completed Fuel Break	Repair Needed	Standard ; many decks need chipped or other solution.
42966	Completed Hand Line	Repair Needed	This is the fire edge. No fire to the south of the line on the east side of the road. Very light in riparian, waterbar only where line was scratched
44783	Completed Road as Line	Repair Needed	Outboard side cast
44785	Completed Road as Line	Repair Needed	Standard repair. Completed fuel break. Standard repair. Chipping, scattering, pile and burn option on hand slash. Grade road.
57606	Completed Road as Line	Repair Needed	Standard



OBJECTID	FC Line Type	Repair Status	Repair Comments
52121	Access or Improved Road	Repair Needed	Standard repair.
35642	Completed Dozer Line	Repair Needed	1 Standard Repair
36611	Completed Dozer Line	Repair Needed	4 Standard Repair
36612	Completed Dozer Line	Repair Needed	3 Standard Repair
46813	Completed Dozer Line	Repair Needed	Standard repair. Old road opened up with dozer.
46814	Completed Dozer Line	Repair Needed	Standard repair
46815	Completed Dozer Line	Repair Needed	Standard repair
47263	Completed Dozer Line	Repair Needed	Standard repair
47264	Completed Dozer Line	Repair Needed	Standard repair. Wet area at the very top of loop.
47265	Completed Dozer Line	Repair Needed	Standard Repair
48528	Completed Dozer Line	Repair Needed	Standard
55575	Completed Dozer Line	Repair Needed	Standard repair. See suppression repair plan.
59134	Completed Dozer Line	Repair Needed	Standard repair.
59135	Completed Dozer Line	Repair Needed	Standard repair.
59136	Completed Dozer Line	Repair Needed	Standard repair
32872	Completed Fuel Break	Repair Needed	Standard Repair
33169	Completed Fuel Break	Repair Needed	Standard Repair
33859	Completed Fuel Break	Repair Needed	Standard repair.
34949	Completed Fuel Break	Repair Needed	standard
36104	Completed Fuel Break	Repair Needed	Standard Repair
36112	Completed Fuel Break	Repair Needed	Standard repair
36637	Completed Fuel Break	Repair Needed	Standard repair.
38444	Completed Fuel Break	Repair Needed	Standard repair
39712	Completed Fuel Break	Repair Needed	Standard repair
39713	Completed Fuel Break	Repair Needed	
40542	Completed Fuel Break	Repair Needed	Mechanical fuel break.' Grade road clean ditchline
42195	Completed Fuel Break	Repair Needed	Standard repair.
43865	Completed Fuel Break	Repair Needed	Standard repair.
46816	Completed Fuel Break	Repair Needed	Standard repair
52117	Completed Fuel Break	Repair Needed	Standard repair
52118	Completed Fuel Break	Repair Needed	Standard Repair. Fuel break and dozer line.
58516	Completed Fuel Break	Repair Needed	Standard Repair
58518	Completed Fuel Break	Repair Needed	Standard Repair
42194	Completed Fuel Break	Unknown	
34942	Completed Road as Line	Repair Needed	2 Standard Repair
34947	Completed Road as Line	Repair Needed	13 standard, rolling dips knock berms, keep drivable for this year patrol



OBJECTID	FC Line Type	Repair Status	Repair Comments
33515	Access or Improved Road	Repair Needed	18 Standard Repair
36614	Access or Improved Road	Repair Needed	20 Standard Repair. Close with earthen berm
52137	Access or Improved Road	Repair Needed	Standard repair.
53612	Access or Improved Road	Repair Needed	Standard repair.
28257	Completed Dozer Line	Repair Needed	Standard repair.
31569	Completed Dozer Line	Repair Needed	22 Standard Repair
31570	Completed Dozer Line	Repair Needed	25 Standard Repair
33167	Completed Dozer Line	Repair Needed	Standard repair.
33513	Completed Dozer Line	Repair Needed	19 Standard Repair
33514	Completed Dozer Line	Repair Needed	17 Standard Repair
33516	Completed Dozer Line	Repair Needed	24 Standard Repair, raw line
33517	Completed Dozer Line	Repair Needed	23 Standard Repair
43952	Completed Dozer Line	Repair Needed	159 Standard Repair
43953	Completed Dozer Line	Repair Needed	153 Refer to READ
43964	Completed Dozer Line	Repair Needed	Standard Repair
43965	Completed Dozer Line	Repair Needed	158 Standard Repair
43970	Completed Dozer Line	Repair Needed	Steep section West of 259rd, refer to READ. Steep section of dozer line that will need water bars - duplicate length
43971	Completed Dozer Line	Repair Needed	155 Standard Repair
50992	Completed Dozer Line	Repair Needed	Standard repair.
50993	Completed Dozer Line	Repair Needed	Standard
50998	Completed Dozer Line	Repair Needed	standard
52129	Completed Dozer Line	Repair Needed	standard
52130	Completed Dozer Line	Repair Needed	standard
52132	Completed Dozer Line	Repair Needed	Standard
52133	Completed Dozer Line	Repair Needed	Standard
52134	Completed Dozer Line	Repair Needed	Standard, 28
52135	Completed Dozer Line	Repair Needed	Standard
52136	Completed Dozer Line	Repair Needed	Standard
52138	Completed Dozer Line	Repair Needed	27;special attention needed; Steep section west of 259 RD needs water bars
52139	Completed Dozer Line	Repair Needed	Standard
56621	Completed Dozer Line	Repair Needed	Standard repair. Not a complete line. Dozer walked up hill. Sections of the walk are torn up from difficulty getting up hill.
32867	Completed Fuel Break	Repair Needed	
32868	Completed Fuel Break	Repair Needed	Standard
33163	Completed Fuel Break	Repair Needed	Standard repair.
33164	Completed Fuel Break	Repair Needed	Standard road repair
33168	Completed Fuel Break	Repair Needed	Ditches clean of slash, stab height no more than 6", contouring, spread slash. Roads graded, culverts clear. thinning existing shaded fuel break.
33859	Completed Fuel Break	Repair Needed	Standard repair.
36104	Completed Fuel Break	Repair Needed	Standard Repair
36106	Completed Fuel Break	Repair Needed	Ditches clean of slash, stab height no more than 6", contouring, spread slash. Roads graded, culverts clear. Logging of established treatment approximately 2 chains into the east side of the road.
36107	Completed Fuel Break	Repair Needed	Ditches clean of slash, stab height no more than 6", contouring, spread slash. Roads graded, culverts clear
38005	Completed Fuel Break	Repair Needed	Standard repair
42195	Completed Fuel Break	Repair Needed	Standard repair.
47173	Completed Fuel Break	Repair Needed	Treat heavily trafficked skid trail like dozer line, standard repair. Where fuel break meets private- weak link in holdable line
58518	Completed Fuel Break	Repair Needed	Standard Repair
58519	Completed Fuel Break	Repair Needed	Standard Repair
42194	Completed Fuel Break	Unknown	
43951	Completed Hand Line	Repair Needed	160 Standard Repair
43966	Completed Hand Line	Repair Needed	156 Standard Repair
43967	Completed Hand Line	Repair Needed	157 Standard Repair
43968	Completed Hand Line	Repair Needed	154 Standard Repair
50994	Completed Hand Line	Repair Needed	33
52127	Completed Hand Line	Repair Needed	Standard repair
52128	Completed Hand Line	Repair Needed	Standard repair.
29770	Completed Road as Line	Repair Needed	14 Standard repair
32879	Completed Road as Line	Repair Needed	21 Standard Repair
32880	Completed Road as Line	Repair Needed	26
33165	Completed Road as Line	Repair Needed	Standard Repair
34947	Completed Road as Line	Repair Needed	13 standard, rolling dips knock berms, keep drivable for this year patrol
50997	Completed Road as Line	Repair Needed	
52437	Completed Road as Line	Repair Needed	18 Standard Repair
34948	Completed Road as Line	Unknown	15

OBJECTID	FC Line Type	Repair Status	Repair Comments
52137	Access or Improved Road	Repair Needed	Standard repair.
43952	Completed Dozer Line	Repair Needed	159 Standard Repair
43964	Completed Dozer Line	Repair Needed	Standard Repair
48546	Completed Dozer Line	Repair Needed	Standard - edited 8-29 to represent extent
48547	Completed Dozer Line	Repair Needed	
50993	Completed Dozer Line	Repair Needed	Standard
50998	Completed Dozer Line	Repair Needed	standard
52129	Completed Dozer Line	Repair Needed	standard
52130	Completed Dozer Line	Repair Needed	standard
52131	Completed Dozer Line	Repair Needed	Standard
52132	Completed Dozer Line	Repair Needed	Standard
52133	Completed Dozer Line	Repair Needed	Standard
52135	Completed Dozer Line	Repair Needed	Standard
52136	Completed Dozer Line	Repair Needed	Standard
53594	Completed Dozer Line	Repair Needed	Standard repair. Slash pile. Skidsteer plow line. Skidsteer push piles.
53596	Completed Dozer Line	Repair Needed	Standard repair.
36107	Completed Fuel Break	Repair Needed	Ditches clean of slash, stab height no more than 6", contouring, spread slash. Roads graded, culverts clear
53622	Completed Fuel Break	Repair Needed	Standard repair. Mechanical thinned fuel break, width varies 100-250 ft wide. South side of 33 road
43951	Completed Hand Line	Repair Needed	160 Standard Repair
43967	Completed Hand Line	Repair Needed	157 Standard Repair
50994	Completed Hand Line	Repair Needed	33
52127	Completed Hand Line	Repair Needed	Standard repair
52128	Completed Hand Line	Repair Needed	Standard repair.
33165	Completed Road as Line	Repair Needed	Standard Repair
50997	Completed Road as Line	Repair Needed	
53595	Repair Line	Repair Needed	Big Tree Trail No. 311 Crushed white aggregate. Slash, heavy equipment tracks, Boulder fragments & timber. Tracked trail damage in fuel break only.
55027	Repair Line	Repair Needed	Standard repair. Dozer opened old road bed. Check snowmobile route. Ensure drainage. Block for OHV if not needed by forest



OBJECTID	FC Line Type	Repair Status	Repair Comments
45459	Access or Improved Road	Repair Needed	Standard Repair. Burnt log bunches
56623	Access or Improved Road	Repair Needed	Standard repair.
50983	Completed Dozer Line	Completed - Ready for Inspection	
28257	Completed Dozer Line	Repair Needed	Standard repair.
32277	Completed Dozer Line	Repair Needed	42 Standard Repair
32278	Completed Dozer Line	Repair Needed	41 Standard Repair
33166	Completed Dozer Line	Repair Needed	Standard repair.
33167	Completed Dozer Line	Repair Needed	Standard repair.
44294	Completed Dozer Line	Repair Needed	See plan
45450	Completed Dozer Line	Repair Needed	Standard Repair
45452	Completed Dozer Line	Repair Needed	Standard Repair
45453	Completed Dozer Line	Repair Needed	Standard Repair
45454	Completed Dozer Line	Repair Needed	Standard Repair
45456	Completed Dozer Line	Repair Needed	Standard Repair
45457	Completed Dozer Line	Repair Needed	
45460	Completed Dozer Line	Repair Needed	Standard Repair
45461	Completed Dozer Line	Repair Needed	Standard Repair, Raw dozer ties in to wetland- part fs part private land talk to landowner where line continues across their property
50980	Completed Dozer Line	Repair Needed	Standard repair, 36
50981	Completed Dozer Line	Repair Needed	Standard
50982	Completed Dozer Line	Repair Needed	Standard
50984	Completed Dozer Line	Repair Needed	Standard
50985	Completed Dozer Line	Repair Needed	Standard
50986	Completed Dozer Line	Repair Needed	Standard, 35
50987	Completed Dozer Line	Repair Needed	Standard repair.
50988	Completed Dozer Line	Repair Needed	Standard
50989	Completed Dozer Line	Repair Needed	Standard, 35
50991	Completed Dozer Line	Repair Needed	Standard repair.
50992	Completed Dozer Line	Repair Needed	Standard repair.
50993	Completed Dozer Line	Repair Needed	Standard
52135	Completed Dozer Line	Repair Needed	Standard
52136	Completed Dozer Line	Repair Needed	Standard
53613	Completed Dozer Line	Repair Needed	Standard
53614	Completed Dozer Line	Repair Needed	Natural fallen trees exist across interior dozer line
53615	Completed Dozer Line	Repair Needed	
53616	Completed Dozer Line	Repair Needed	Standard
53617	Completed Dozer Line	Repair Needed	Standard
56621	Completed Dozer Line	Repair Needed	Standard repair. Not a complete line. Dozer walked up hill. Sections of the walk are torn up from difficulty getting up hill.
56739	Completed Dozer Line	Repair Needed	Standard repair. Ties into fuel break
56740	Completed Dozer Line	Repair Needed	Standard repair
56741	Completed Dozer Line	Repair Needed	Standard repair. Two steep sections. Check excavator ability
56855	Completed Dozer Line	Repair Needed	
56856	Completed Dozer Line	Repair Needed	Standard repair.
28996	Completed Fuel Break	Repair Needed	40 Standard Repair. Green Logs still bunched
29772	Completed Fuel Break	Repair Needed	Scratch out skid trails where present, refer to READ about burned over log decks
36108	Completed Fuel Break	Repair Needed	Standard repair.
38004	Completed Fuel Break	Repair Needed	Standard repair.
50990	Completed Fuel Break	Repair Needed	Riparian area, heavy slash, rec area
55028	Completed Fuel Break	Repair Needed	Standard repair.
56846	Completed Fuel Break	Repair Needed	Standard Repair. Burnt log bunches
45451	Completed Hand Line	Repair Needed	Standard Repair
50994	Completed Hand Line	Repair Needed	33
33165	Completed Road as Line	Repair Needed	Standard Repair
38003	Completed Road as Line	Repair Needed	Standard Repair
45458	Road Repair	Repair Needed	

OBJECTID	FC Line Type	Repair Status	Repair Comments
56623	Access or Improved Road	Repair Needed	Standard repair.
50983	Completed Dozer Line	Completed - Ready for Inspection	
44294	Completed Dozer Line	Repair Needed	See plan
45450	Completed Dozer Line	Repair Needed	Standard Repair
45452	Completed Dozer Line	Repair Needed	Standard Repair
45453	Completed Dozer Line	Repair Needed	Standard Repair
45454	Completed Dozer Line	Repair Needed	Standard Repair
45456	Completed Dozer Line	Repair Needed	Standard Repair
45457	Completed Dozer Line	Repair Needed	
45465	Completed Dozer Line	Repair Needed	Standard repair. Dozer cut skid trail along bench above steep section next to road,
50980	Completed Dozer Line	Repair Needed	Standard repair, 36
50981	Completed Dozer Line	Repair Needed	Standard
50982	Completed Dozer Line	Repair Needed	Standard
50984	Completed Dozer Line	Repair Needed	Standard
50985	Completed Dozer Line	Repair Needed	Standard
50986	Completed Dozer Line	Repair Needed	Standard, 35
50987	Completed Dozer Line	Repair Needed	Standard repair.
50988	Completed Dozer Line	Repair Needed	Standard
50989	Completed Dozer Line	Repair Needed	Standard, 35
53613	Completed Dozer Line	Repair Needed	Standard
53614	Completed Dozer Line	Repair Needed	Natural fallen trees exist across interior dozer line
53615	Completed Dozer Line	Repair Needed	
53616	Completed Dozer Line	Repair Needed	Standard
53617	Completed Dozer Line	Repair Needed	Standard
56741	Completed Dozer Line	Repair Needed	Standard repair. Two steep sections. Check excavator ability
29772	Completed Fuel Break	Repair Needed	Scratch out skid trails where present, refer to READ about burned over log decks
32276	Completed Fuel Break	Repair Needed	Rehab skid trail in FB to standard spec in repair plan. Use rubber tracked mini excavator to clear out roadside ditch
36640	Completed Fuel Break	Repair Needed	Heavily logged with cut material still on ground
47623	Completed Fuel Break	Repair Needed	Standard repair
53620	Completed Fuel Break	Repair Needed	Standard repair. Mechanical thinned fuel break, south side of road, GPS track from road FB approx 150-300 ft wide
53621	Completed Fuel Break	Repair Needed	Standard repair. Complete mechanical thinned fuel break above 33 RD. GPS tracked approx. N side of FB where it leaves 33 Rd
53622	Completed Fuel Break	Repair Needed	Standard repair. Mechanical thinned fuel break, width varies 100-250 ft wide. South side of 33 road
58522	Completed Fuel Break	Repair Needed	
45451	Completed Hand Line	Repair Needed	Standard Repair
47622	Completed Mixed Construction Line	Repair Needed	Standard repair fuel break and dozer line. Thinned Fuel Break with Dozer line
38003	Completed Road as Line	Repair Needed	Standard Repair
55027	Repair Line	Repair Needed	Standard repair. Dozer opened old road bed. Check snowmobile route. Ensure drainage. Block for OHV if not needed by forest
45458	Road Repair	Repair Needed	



OBJECTID	FC Line Type	Repair Status	Repair Comments
29730	Access or Improved Road	Repair Needed	Standard Repair
50115	Access or Improved Road	Repair Needed	Standard
52061	Access or Improved Road	Repair Needed	Boulders need to put back to close road, standard
56623	Access or Improved Road	Repair Needed	Standard repair.
48692	Completed Dozer Line	In Progress	
49822	Completed Dozer Line	In Progress	Seed?
49850	Completed Dozer Line	In Progress	standard. water bars in place, berm pushed back and brushed.
52688	Completed Dozer Line	In Progress	Standard, equipment done needs seeding
52689	Completed Dozer Line	In Progress	Standard, needs seeding
55029	Completed Dozer Line	In Progress	Standard, Seeding?
55030	Completed Dozer Line	In Progress	Standard, heavy slash will be hard to seed
28071	Completed Dozer Line	Repair Needed	Standard
28073	Completed Dozer Line	Repair Needed	Standard Repair
29733	Completed Dozer Line	Repair Needed	Standard Low priority, seeding needed
29740	Completed Dozer Line	Repair Needed	Standard
29742	Completed Dozer Line	Repair Needed	Standard Repair
48690	Completed Dozer Line	Repair Needed	
48693	Completed Dozer Line	Repair Needed	Standard
49813	Completed Dozer Line	Repair Needed	
49819	Completed Dozer Line	Repair Needed	Standard repair.
49820	Completed Dozer Line	Repair Needed	Standard repair.
49821	Completed Dozer Line	Repair Needed	Standard
49824	Completed Dozer Line	Repair Needed	
49826	Completed Dozer Line	Repair Needed	Standard
49851	Completed Dozer Line	Repair Needed	Standard
49852	Completed Dozer Line	Repair Needed	Standard
49853	Completed Dozer Line	Repair Needed	
52063	Completed Dozer Line	Repair Needed	Standard or seed only
52124	Completed Dozer Line	Repair Needed	Standard
58545	Completed Dozer Line	Repair Needed	Standard Repair
58547	Completed Dozer Line	Repair Needed	
59267	Completed Dozer Line	Repair Needed	Standard
32276	Completed Fuel Break	Repair Needed	Rehab skid trail in FB to standard spec in repair plan. Use rubber tracked mini excavator to clear out roadside ditch
36640	Completed Fuel Break	Repair Needed	Heavily logged with cut material still on ground
40063	Completed Fuel Break	Repair Needed	Standard repair
47623	Completed Fuel Break	Repair Needed	Standard repair
47625	Completed Fuel Break	Repair Needed	Standard repair. Fuel break and rd. Completed Mechanical thinned fuel break along road
47627	Completed Fuel Break	Repair Needed	Standard repair. Completed Mechanical thinned Fuel break along road.
47629	Completed Fuel Break	Repair Needed	Standard repair. Mechanical thinned fuel Break along road. GPS track of road in continuous fuel break
49810	Completed Fuel Break	Repair Needed	Completed Mechanical thinned shaded fuel break. Width varies, approx 100-150 ft on average. Road will need standard repair
49811	Completed Fuel Break	Repair Needed	Standard repair. Fuel break with dozer line. GPS track of Dozer line b/w Improved road in mechanical thinned fuel break. DL width 10 ft. FB width approx 200 ft
49812	Completed Fuel Break	Repair Needed	Standard repair. Fuel break with dozer line.
49815	Completed Fuel Break	Repair Needed	Standard repair
49816	Completed Fuel Break	Repair Needed	Standard repair.
49817	Completed Fuel Break	Repair Needed	See road repair track previously represented
49818	Completed Fuel Break	Repair Needed	See road repair track previously represented. Completed Mechanical thinned fuel break along improved road. GPS track of road, FB approx 100 ft wide. Part of continuous mixed FB
53620	Completed Fuel Break	Repair Needed	Standard repair. Mechanical thinned fuel break, south side of road, GPS track from road FB approx 150-300 ft wide
58522	Completed Fuel Break	Repair Needed	
53699	Completed Hand Line	Repair Needed	
53700	Completed Hand Line	Repair Needed	
53701	Completed Hand Line	Repair Needed	Standard repair.
53702	Completed Hand Line	Repair Needed	
53703	Completed Hand Line	Repair Needed	
58548	Completed Hand Line	Repair Needed	
58549	Completed Hand Line	Repair Needed	
47622	Completed Mixed Construction Line	Repair Needed	Standard repair fuel break and dozer line. Thinned Fuel Break with Dozer line
47624	Completed Mixed Construction Line	Repair Needed	Standard repair fuel break and dozer line. Completed mechanical thinned fuel break with Dozer line
47626	Completed Mixed Construction Line	Repair Needed	Standard repair. Fuel break and dozer line. Completed Mechanical thinning with dozer line. GPS track of dozer line
47628	Completed Mixed Construction Line	Repair Needed	Standard repair. Fuel break and dozerline on old skid trail
49814	Completed Mixed Construction Line	Repair Needed	Standard repair. Fuel break and dozer line. GPS track of Dozer line in mechanical thinned Fuel break. DZ line width 10 ft. FB width 150 -200 ft
42951	Completed Mixed Construction Line	Unknown	Reshape draw, pull in berms and slash, seed
26836	Completed Road as Line	Repair Needed	Standard
36826	Completed Road as Line	Repair Needed	59 Rehab, closed to vehicles, ohv
52440	Completed Road as Line	Repair Needed	Standard
52441	Completed Road as Line	Repair Needed	Standard also needs chipping or scattering of windrow
53698	Completed Road as Line	Repair Needed	Standard repair.
59260	Completed Road as Line	Repair Needed	Standard
42882	Road Repair	Repair Needed	Standard repair. Add drainage, pull in side berms, road was previously closed with earthen berms at each end

OBJECTID	FC Line Type	Repair Status	Repair Comments
38008	Access or Improved Road	Repair Needed	Road will need attention post suppression, possibly gravel
45459	Access or Improved Road	Repair Needed	Standard Repair. Burnt log bunches
52061	Access or Improved Road	Repair Needed	Boulders need to put back to close road, standard
26824	Completed Dozer Line	Repair Needed	Standard low priority
26825	Completed Dozer Line	Repair Needed	Standard
26826	Completed Dozer Line	Repair Needed	Standard Repair, Some sections are on non system roads
26827	Completed Dozer Line	Repair Needed	Standard Repair
26828	Completed Dozer Line	Repair Needed	Standard
26829	Completed Dozer Line	Repair Needed	113 Standard Repair
26830	Completed Dozer Line	Repair Needed	Standard Repair
26833	Completed Dozer Line	Repair Needed	114 Standard Repair
28993	Completed Dozer Line	Repair Needed	45 Standard Repair
29735	Completed Dozer Line	Repair Needed	Standard
29738	Completed Dozer Line	Repair Needed	Standard
30115	Completed Dozer Line	Repair Needed	Hazard trees everywhere , lots of downfall and other debris no mechanical repair needed
30116	Completed Dozer Line	Repair Needed	Standard
32277	Completed Dozer Line	Repair Needed	42 Standard Repair
32278	Completed Dozer Line	Repair Needed	41 Standard Repair
40744	Completed Dozer Line	Repair Needed	Standard repair.
43511	Completed Dozer Line	Repair Needed	Standard
45452	Completed Dozer Line	Repair Needed	Standard Repair
45460	Completed Dozer Line	Repair Needed	Standard Repair
45461	Completed Dozer Line	Repair Needed	Standard Repair, Raw dozer ties in to wetland- part fs part private land talk to landowner where line continues across their property
48681	Completed Dozer Line	Repair Needed	Standard repair
48682	Completed Dozer Line	Repair Needed	Standard. GPS track of previously represented dozer line
48683	Completed Dozer Line	Repair Needed	Standard
50346	Completed Dozer Line	Repair Needed	Standard,
50840	Completed Dozer Line	Repair Needed	Standard
50980	Completed Dozer Line	Repair Needed	Standard repair, 36
50981	Completed Dozer Line	Repair Needed	Standard
50982	Completed Dozer Line	Repair Needed	Standard
52058	Completed Dozer Line	Repair Needed	DI around slash pile
52059	Completed Dozer Line	Repair Needed	Around slash piles
52125	Completed Dozer Line	Repair Needed	Standard
52126	Completed Dozer Line	Repair Needed	Standard
52439	Completed Dozer Line	Repair Needed	Standard Low priority
53618	Completed Dozer Line	Repair Needed	Standard
56534	Completed Dozer Line	Repair Needed	49 Standard Repair
56536	Completed Dozer Line	Repair Needed	
56739	Completed Dozer Line	Repair Needed	Standard repair. Ties into fuel break
56740	Completed Dozer Line	Repair Needed	Standard repair
56741	Completed Dozer Line	Repair Needed	Standard repair. Two steep sections. Check excavator ability
58032	Completed Dozer Line	Repair Needed	Standard
58035	Completed Dozer Line	Repair Needed	Starting at Boy Scout shooting rang very visible and steep section of line. No slash to grab. DI becomes road near intersection. Waterbar and seed
58036	Completed Dozer Line	Repair Needed	Seed
58037	Completed Dozer Line	Repair Needed	
58038	Completed Dozer Line	Repair Needed	Seed?
58525	Completed Dozer Line	Repair Needed	Standard repair
58528	Completed Dozer Line	Repair Needed	Standard repair
58530	Completed Dozer Line	Repair Needed	Standard repair.
58536	Completed Dozer Line	Repair Needed	Standard
59258	Completed Dozer Line	Repair Needed	repair very low priority, rocky lots of wood on it all ready, smaller side cast
59259	Completed Dozer Line	Repair Needed	Pull berms, seed water bar where necessary, do not pull slash in case it was a road bed
59266	Completed Dozer Line	Repair Needed	Standard low priority, minimal sidecast, if resources are limited seed only hand crew could handle adding slash back on line
29737	Completed Dozer Line	Unknown	
28996	Completed Fuel Break	Repair Needed	40 Standard Repair. Green Logs still bunched
29772	Completed Fuel Break	Repair Needed	Scratch out skid trails where present, refer to READ about burned over log decks
47629	Completed Fuel Break	Repair Needed	Standard repair. Mechanical thinned fuel Break along road. GPS track of road in continuous fuel break
50839	Completed Fuel Break	Repair Needed	Excavator made line ,low priority
56846	Completed Fuel Break	Repair Needed	Standard Repair. Burnt log bunches
43512	Completed Hand Line	Repair Needed	Standard repair.
45462	Completed Hand Line	Repair Needed	Standard Repair
50841	Completed Hand Line	Repair Needed	Pull hose does not need other repair
58033	Completed Hand Line	Repair Needed	Standard
58034	Completed Hand Line	Repair Needed	Standard, t
26834	Completed Road as Line	Repair Needed	97, check nvum map, standard
28077	Completed Road as Line	Repair Needed	81, nvum
28994	Completed Road as Line	Repair Needed	44
28995	Completed Road as Line	Repair Needed	43 Standard Repair
30114	Completed Road as Line	Repair Needed	Standard
38007	Completed Road as Line	Repair Needed	51 Special Attention
50347	Completed Road as Line	Repair Needed	Standard
52440	Completed Road as Line	Repair Needed	Standard
52441	Completed Road as Line	Repair Needed	Standard also needs chipping or scattering of windrow
58534	Completed Road as Line	Repair Needed	Standard
59260	Completed Road as Line	Repair Needed	Standard
53619	Completed Road as Line	Unknown	