

Walker Creek WA-NES-002245





23,316 acres

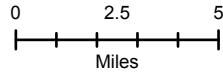
Chickadee Creek WA-NES-002310

5,855 acres

Evacuation Area Map

09/07/2021

-  Fire Area
-  Contained Line
-  Evacuation Area
-  Level 2 - Be Ready



Disclaimer:

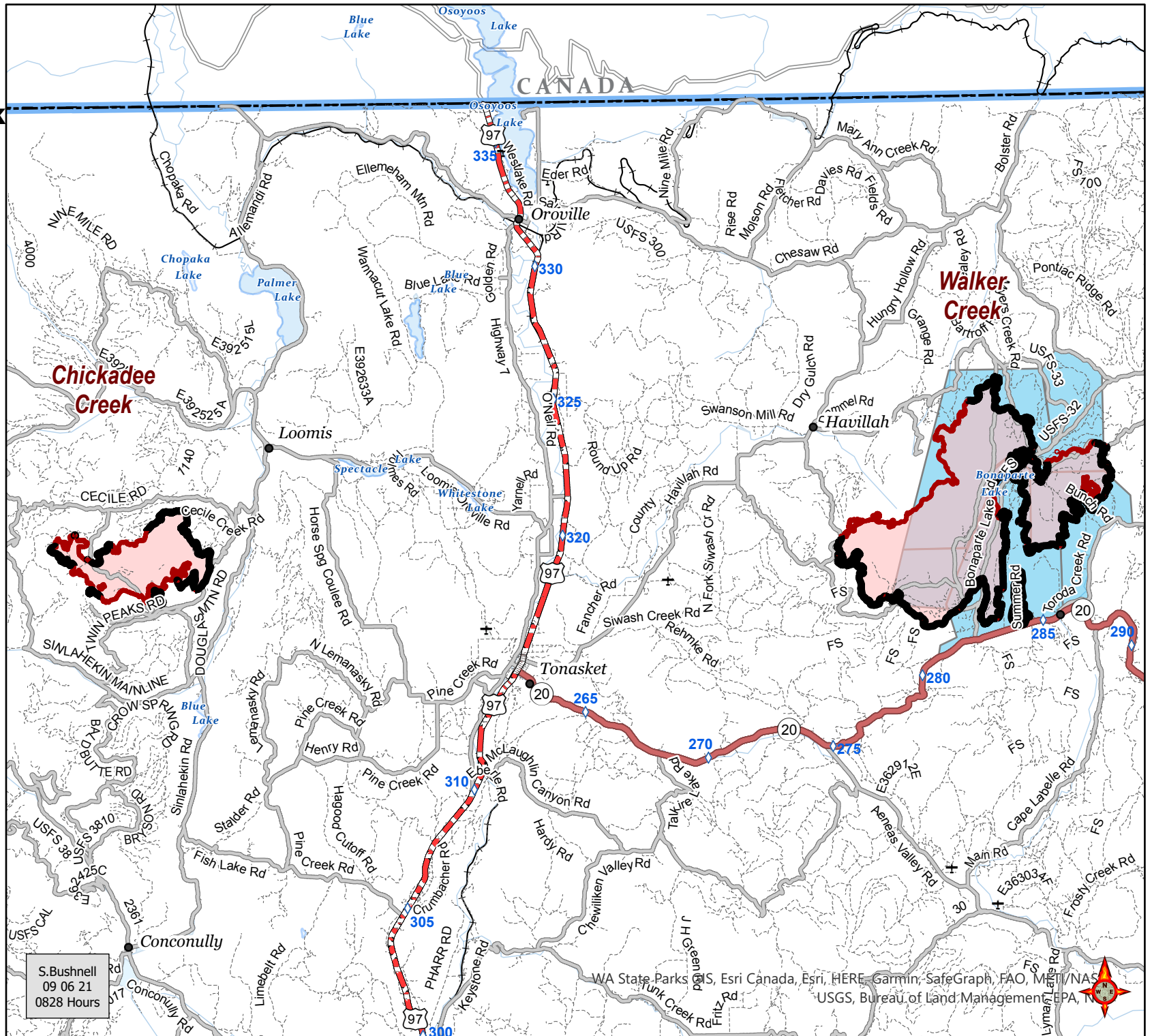
While NW IMT12 makes every effort to represent the data shown on these maps as completely and accurately as possible, no warranty is given, expressed or implied, as to the accuracy, reliability, or completeness of these data. In addition, NW IMT12 and/or other participating agencies shall not be held liable for improper or incorrect use of the data described and/or contained herein. Graphical representations provided by the use of this data does not represent any legal description of the data herein and are provided only as a general representation of the data. No indication/statement of fire containment is given, expressed or implied by this product.

More Information:

<http://inciweb.nwgc.gov>



S. Bushnell
09 06 21
0828 Hours



WA State Parks GIS, Esri Canada, Esri, HERE, Garmin, SafeGraph, FAO, Mapbox, NAS, USGS, Bureau of Land Management, EPA, NAD