

INCIDENT ACTION PLAN

Walker Creek / Chickadee Creek

August 27-28, 2021

Dayshift 0600-2000

Nightshift 1800-0800

Walker Creek Fire

WA-NES-002245

PNN7RL (1522)

WA state code: 221KPI

Chickadee Creek Fire

WA-NES-002310

PNN7WA (1522)

221-JFZ

QR Code for:

Virtual Check-in

Time

Maps

IAP

COVID19 Self Test



This page intentionally left blank.



INCIDENT OBJECTIVES (ICS 202)

1. Incident Name:	2. Operational Period: DAY/NIGHT	
WALKER CREEK & CHICKADEE CREEK	Date/Time From: 08/27/2021 0600 FRI	Date/Time To: 08/28/2021 0800 SAT
3. Objective(s):		
<ul style="list-style-type: none"> • Ensure firefighter, aviator and public safety is the priority in all fire management activities by utilizing a risk-based approach to decision making. • Implement a full suppression strategy utilizing direct and indirect tactics having a high probability of success while aligning with values at risk and remaining fiscally responsible. • Develop and maintain relationships with BLM, WA DNR, USFS, Okanogan County, local agencies, cooperators, stakeholders, and the public while providing consistent and timely public information. • Utilize appropriate fire strategies to minimize fire impacts on private properties, recreation trails, infrastructure, and natural & cultural resources including timber, grazing land, spotted owl and Canadian Lynx habitat, white bark pine, and cultural, historic and heritage sites. • Follow CDC/PNWCG Best Management Practices to minimize public and responder exposure to transmission or infection from COVID-19. 		
4. Operational Period Command Emphasis:		
General Situational Awareness:		
5. Site Safety Plan Required? Yes <input type="checkbox"/> No <input checked="" type="checkbox"/>		
Approved Site Safety Plan(s) Located		
6. Incident Action Plan (the items checked below are included in this Incident Action Plan):		
<input checked="" type="checkbox"/> ICS 202 <input checked="" type="checkbox"/> ICS 203 <input checked="" type="checkbox"/> ICS 204 <input checked="" type="checkbox"/> ICS 205 <input type="checkbox"/> ICS 205A <input checked="" type="checkbox"/> ICS 206	<input type="checkbox"/> ICS 207 <input type="checkbox"/> ICS 208 <input checked="" type="checkbox"/> ICS 220 <input checked="" type="checkbox"/> Map/Chart <input checked="" type="checkbox"/> Weather Forecast/Tides/Currents	Other Attachments: <input checked="" type="checkbox"/> HR MESSAGE <input checked="" type="checkbox"/> COVID SCREENING <input type="checkbox"/> _____ <input type="checkbox"/> _____
7. Prepared by: NATHAN JEFFRIES Position/Title: PSC2	Signature: <i>Nathan Jeffries</i>	
8. Approved by Incident Commander:	Name: JEFF DIMKE	Signature: <i>Jeff Dimke</i>
ICS 202	IAP Page	Date/Time: <i>08/26</i> /2021 2000

ORGANIZATION ASSIGNMENT LIST (ICS 203)

1. Incident Name:		2. Operational Period: DAY/NIGHT	
WALKER CREEK & CHICKADEE CREEK		Date/Time From: 08/27/2021 0600	FRI
		Date/Time To: 08/28/2021 0800	SAT
3. Incident Commander(s) and Command Staff:		FOOD UNIT	RUSS HOVEY
IC/UC	JEFF DIMKE	SECURITY UNIT	
DEPUTY	BOBBY SHINDELAR	7. Operations Section:	
SAFETY OFFICER	TROY CORN JACK CATES	PLANNING OPS	AARON ROWE
INFORMATION OFFICER	MARY BEAN ROLAND EMETAZ	OPS SECTION CHIEF	TONY ENGEL JEROMY WILSON (T)
LIAISON OFFICER	SCOTT CRAWFORD	BRANCH DIRECTOR	CHRIS ZOLLER
HEALTH LIAISON	LIV STECKER	BRANCH DIRECTOR	JERRAN FLINDERS
HUMAN RESOURCE SPECIALIST	SUSIE MANEZES	BRANCH DIRECTOR	PAUL HOHN
4. Agency/Organization Representative(s):			
Agency/Organization	Name	DIVISION/GROUP	A TY GRIPP
		DIVISION/GROUP	F CODY ACORD SCOTT NIELSEN (T)
DNR	KEN MCNAMEE (ADMIN) BRETT WALKER (AREP)	DIVISION/GROUP	H MATT KENNEDY MIKE MEGEL
USFS	RODNEY SMOLDEN (ADMIN) TRAVIS FLETCHER (AREP)	DIVISION/GROUP	Q MICHAEL GOOD JAMES DICKINSON (T)
BLM	CURTIS BRYANT (ADMIN) TIM MURPHREE (AREP)	DIVISION/GROUP	T MICHAEL JACKSON REID MARQUART (T)
OKANOGAN COUNTY OES	MAURICE GOODALL	DIVISION/GROUP	C BOB HINDS
5. Planning Section:		DIVISION/GROUP	K CHET DIERINGER
CHIEF	NATHAN JEFFRIES	DIVISION/GROUP	O ADAM ZIEGLER SAM STEINSHOUER (T)
DEPUTY	MARGE HUTCHINSON	DIVISION/GROUP	NIGHT DANIEL GLEASON SUSAN GREENLEAF (T)
RESOURCES UNIT	JILL JOHNSON	7b. Air Operations Branch:	
SITUATION UNIT	DAVE WISCHER	AIR OPS BRANCH DIRECTOR	MIKE DAVIS GREG RESER (T)
DOCUMENTATION UNIT	DEIDRE SMITH (VIRTUAL))	AIR ATTACK SUPERVISOR	
DEMOBILIZATION UNIT	MIKE HESTON (VIRTUAL) ED MORGAN	AIR SUPPORT SUPERVISOR	
FIRE BEHAVIOR ANALYST	DON STRAND	8. Finance/Administration Section:	
GIS SPECIALIST	SHAWN BUSHNELL MIKE TONKEL (T)	CHIEF	CHERI FULLER CHRISTINA GOEBEL (T)
TECHNOLOGY SUPPORT SPECIALIST	GEORGE JENKINS TODD MALLERY	TIME UNIT	CAROL LONG
INCIDENT METEOROLOGIST	BOB TOBIN	PROCUREMENT UNIT	MARK BOHNET
6. Logistics Section:		COMPENSATION UNIT	CHERI FULLER
CHIEF	DAN SOPTICH	COST UNIT	KAY HIGH (VIRTUAL)
DEPUTY	KEVIN HAUGHTON	ICPI	ROB HECHINGER
SUPPLY UNIT	JOHN KAUPA		
FACILITIES UNIT	SCOTT BEAULAUERIER		
GROUND SUPPORT UNIT	MARK ANDERSON		
COMMUNICATIONS UNIT	MISSY PARKER		
MEDICAL UNIT	EAMONN RYAN; DIANA BRAUN LEE VENNING (T)		
9. Prepared By:	Name: JILL JOHNSON	Position/Title: RESL	Signature: 
ICS 203	IAP Page	Date/Time: 08/26/2021 2000	

Fire Weather Forecast

FORECAST NO: 2
PREDICTION FOR: Friday
Shift Date: August 27, 2021

INCIDENT: Walker-Chickadee Fires
UNIT: DNR-USFS-BLM
SIGNED: *Bob Tabix*

TIME AND DATE
FORECAST ISSUED: 8/26/2021 at 2000

Incident Meteorologist (IMET)

Weather Discussion: A weather disturbance will move out of the region Friday afternoon. This will bring an end to the chances for precipitation. However, temperatures will be the coolest of the week. Expect a warming trend Saturday and Sunday as high pressure moves across the region. Another weather system will begin to move into the area on Monday and linger through at least mid-week. This will allow the region to return to cooler temperatures and a chance for measurable rain around Wednesday.

WEATHER FORECAST: Chickadee

Today:
SKY/WEATHER: A slight chance of showers in the early morning. Then partial clearing through he day.
High Temperature...57-62 above 4000 ft...62-66 below 4000 ft. 24hr chg: Down 3-5 degrees
Min RH.....34-38% above 4000 ft...30-35% below 4000 ft. 24hr chg: Up 10-15 percent.
20-FOOT WINDS: Northwest winds 8-10 mph with gusts to 15 mph.
CWR (>=0.10")....10% **LAL....**1 **Haines Index...2 (Very Low)** **Mixing Height...5800 ft AGL**

Tonight:
SKY/WEATHER: Mostly clear.
Low Temperature...45-50.
Max RH.....55-65%
20-FOOT WINDS: Northwest 5-10 mph. Mainly drainage 2-4 mph midslopes and valleys.
CWR (>=0.10")....10% **LAL....**1

WEATHER FORECAST: Walker

Today:
SKY/WEATHER: A slight chance of showers early in the morning.
High Temperature...60-65 above 4000 ft...67-72 below 4000 ft.
Min RH.....35-40% above 4000 ft...30-35% below 4000 ft.
20-FOOT WINDS: West winds 8-10 mph with gusts to 15 mph.
CWR (>=0.10")....5% **LAL....**1 **Haines Index...2 (Very Low)** **Mixing Height...6000 ft AGL**

Tonight:
SKY/WEATHER: Partly cloudy.
Low Temperature...42-47.
Max RH.....65-75%
20-FOOT WINDS: Northwest-north 5-10 mph. Mainly drainage 2-4 mph midslopes and valleys.
CWR (>=0.10")....0% **LAL....**1

Extended Outlook

Saturday... Partly cloudy. High: 65-75. Min RH: 25-35% Winds: SE-SW 5-9 with gusts to 15 mph.
Sunday...Partly cloudy. High: 68-77. Min RH: 20-30% Winds: SE-SW 8-10 mph with gusts to 15 mph.
Monday... Mostly cloudy. High: 64-72. Min RH: 20-30% Winds: Southwest 8-12 mph

FIRE BEHAVIOR FORECAST

FORECAST NUMBER: 20	TYPE OF FIRE: Wildland
FIRE NAME: Walker Creek & Chickadee Creek	OPERATIONAL PERIOD: Aug 27-28 20121 0600-0600
DATE ISSUED: Aug 26 2021	TIME ISSUED: 2000
UNIT: WA DNR, BLM, USFS	Don Strand FBAN

INPUTS

WEATHER SUMMARY:

OUTPUTS

FIRE BEHAVIOR

FUELS: The fires are burning mostly in mixed conifer timber consisting of Douglas-fir, western larch, Engelmann spruce, and lodgepole pine below 6,000'. Sub-alpine fir, white bark pine, and lodgepole pine occur above 6,000'. All timber types have ladder fuels with black moss/lichens that make for an easy transition to crown fire. Dead fine fuels, grass, and slash will increase surface fire spread. Most live fuels, except for red alder, are available to carry fire and fuel moistures will continue to drop with seasonal drying.

GENERAL: Expect continued moderated fire behavior. Expect smoldering and creeping early and in the afternoon as humidity decreases a slight increase in backing and flanking. Continue to watch for hold over spots from previous fire activity. Heavy fuels will burn until consumed or extinguished. Single tree torching may occur where pockets of heat remain under ladder fuels and where close to fire edge can cause spotting. Pitchy/punky wood and fine fuels still will be receptive fuel beds. Any spotting will be short range.

SPECIFIC:

Chickadee: Fire spread has been terrain and fuels driven with spotting and roll outs. Today, pay attention for hold over spots for previous fire activity. Burn out operations may be less effective with the cooler conditions. Fire behavior will be low with smoldering and limited backing and flanking in the afternoon. Winds will likely be northerly in the Sinlahekin.

Fuel Moistures- Aeneas LO RAWS from yesterday were- 10-hour 10%, 100-hour 13%, 1000-hour 13%. ERC near 74th percentile or near average for this time of year.

Probability of Ignition will approach 50% unshaded and 30% shaded.

Walker: Expect moderated fire activity with cooler conditions. Fire will be smoldering and creeping early, with humidity decreasing into the mid 30's later in the afternoon a slight increase in fire behavior potential exists. Continue to watch for surface fire near control lines with forecasted west wind. A slight chance for torching exists. Conditions to burnout will likely be varied depending on humidity and fuel loading.

Fuel Moistures- Lost Lake RAWS from yesterday were- 10-hour 10%, 100-hour 16%, 1000-hour 16%. ERC near 75th percentile.

Probability of Ignition will approach 50% unshaded and 30% shaded.

Night: Favorable weather and fuels will reduce fire activity after sundown. Minimal spread potential early in the shift while heavy fuels will hold heat overnight. Stump holes burning deep

AIR OPERATIONS:

SAFETY

Maintain Situational Awareness by periodically taking weather and calculating the fine dead fuel moisture and Probability of Ignition

1000-hour fuels have been low this summer and are now near 13% in many locations. This mean that stump holes are burning deep. Live trees that have previous damage to the lower trunk from past harvests can burn interior heart wood and become overhead hazards.



SAFETY MESSAGE

27-28 August 2021

INCIDENT: Walker Creek/Chickadee

OPERATIONAL PERIOD: 0600-0600

COVID MITIGATIONS

Please review your COVID/Viral Transmission prevention guidelines. Maintain your distancing to the greatest extent, cough or sneeze away from other people, mask up when indoors and respect the personal space of others. If you begin feeling ill, notify your supervisor and seek medical attention for screening.

EXPOSURE

As we get ready to start our fourth month of fire season in the Pacific Northwest many of you are setting records for hours worked. Now more than ever its important to manage exposure to hazards. This includes being mentally and physically fit. Here a few items to help with maintaining physical fitness;

- *Allow enough time to sleep after shift work and on days off.
- *Avoid heavy foods before sleeping.
- *Reduce intake of caffeine and other stimulants several hours before sleeping.
- *Ensure fluid and nutritional needs are met and that work/rest cycles are implemented to prevent unnecessary fatigue among both fire fighters and fire managers.

SAFETY OFFICER: Troy Corn, Jack Cates

Deliberate Risk Assessment-Hazard Summary 27-28 August 2021

Hazard	Mitigation	Post Risk
Viral Transmission Mitigations, Communicable Disease	Maintain awareness of health, perform self checks, maintain social distancing, wear face coverings when indoors or when social distancing cannot be maintained. Report and isolate if feeling symptomatic. Coordinate with Okanogan County Public Health for testing, reporting and isolation as needed.	Low
Extraction Time	Identify medivac sites and helispots. Initiate ground transport to accident site. Identify EMT/EMTP from resources assigned to division. Provide line qualified paramedics to each division as available. Review IWI protocol to ensure familiarity. Utilize civilian medivac as treatment/timing dictates. Evaluate on-going need for repositioning medical personnel.	High
Heavy Equipment	Post lookouts around equipment work areas. Establish communications with equipment boss and operator. Do not work down slope from equipment. Familiarize crews with specialty equipment and processes.	High
Hazard Trees	Use avoidance to limit exposure time. Snag ahead to avoid exposure. Use qualified fallers, blasting, or alternate methods if needed. Conduct on-going risk analysis of all work areas. Follow Hazard Tree Safety Guidelines (IRPG page 22).	High
Aircraft	Utilize Air Attack. Ensure all resources are a safe distance from all bucket and retardant drops. Establish LCES. Utilize air to ground primary radio channel. Reference IRPG (Safe aircraft operations pg. 56-58). Ensure IA resources have coordination with unassigned local air resources to provide deconfliction.	High
Steep Terrain/Gravity	Do not work crews above or below each other. Post lookouts for rolling material. Watch footing in loose soil, rock and around vegetation. Do not work below heavy equipment. Scout and identify travel routes. Establish LCES.	Moderate
Physical Factors	Maintain hydration schedule. Closely monitor work rate and implement rest periods. Maintain nutrition. Ensure adequate work/rest.	Moderate
Environmental Factors	Assign medical personnel to camp. Assess for known allergies and report to medical personnel. Obtain Bee Bopper/wasp spray and yellow jacket traps. Maintain an awareness of livestock. Keep an eye out for wildlife including bears, cougars, and rattlesnakes.	Moderate
Fire Behavior	Be aware of burn windows and weather impacts and min/max RH for flashy fuels/local conditions. Be aware of increased fire behavior and concerns specific to thunderstorm safety (IRPG p. 21). Report changes to FBAN and IMET. Include thunderstorm safety message in IAP.	Moderate
Unburned Fuels/Firing Ops	Establish LCES. Ensure management action points are implemented and followed. Weather updates as needed during burning operations. Locate indirect firelines to minimize the amount of unburned fuels. Follow Interagency Ignition Guide. Ensure communications between all firing operations. Establish road security at all firing sites. Follow approved firing plan for unburned fuels.	Moderate
Transportation	Signing of all incident roads that provide access to divisions. Daily updated travel plan maps. Practice defensive driving. In local communities obey the posted speed limits. Use reader boards to control entry as needed. Identify and evaluate contingency and alternate escape and travel routes.	Moderate
Communication	Evaluate for dead zones prior to engagement. Utilize human repeaters as needed. Ensure accountability of resources in problem areas.	Low
Public Interaction	Place new road closures as necessary and maintain current closures. Maintain awareness of evacuation areas and provide accurate information dissemination.	Low

Division/Group Assignment List (ICS 204 WF)
Controlled Unclassified Information//Basic

1. Incident Name:				3.		
WALKER CREEK & CHICKADEE CREEK				Branch: I	Division/Group A	
2. Operational Period: DAY/NIGHT						
Date/Time From: 08/27/2021 0600 FRI		Date/Time To: 08/28/2021 0800 SAT				
4. Operations Personnel						
OPERATIONS CHIEF		TONY ENGEL; AARON ROWE JEROMY WILSON (T)		BRANCH DIRECTOR		CHRIS ZOLLER
SAFETY OFFICER		TROY CORN JACK CATES		DIVISION/GROUP SUPERVISOR		TY GRIPP
5. Resources Assigned this Period						
Strike Team / Task Force / Resource Designator	LWD	Leader	Number Persons	Drop Off PT./Time	Pick Up PT./Time	
O-435 SOF2	09/11	JOSH NORTHRUP	1	ICP/0600	ICP/2000	
O-330 SOFR (T)	09/03	PHILLIP GRAHAM	1	ICP/0600	ICP/2000	
O-24 FMOD FIREFLY	09/13	DAVID BIBLE	2	ICP/0600	ICP/2000	
E-12 ENG5 FORREST FIRE	09/04	AARON VELA	3	ICP/0600	ICP/2000	
E-123 ENG4 HI COUNTRY	08/28	TYLER STEVENSON	3	ICP/0600	ICP/2000	
E-184 ENG6 SILVER TIP FORESTRY	08/28	JACOB STEINSHOUER	3	ICP/0600	ICP/2000	
E-214 ENG6 WHITEHEAD REFORESTATION	08/31	JOHN MIX	3	ICP/0600	ICP/2000	
E-219 ENG3 HEK JONES	09/02	BRINN JONES	3	ICP/0600	ICP/2000	
E-261 ENG5 LATE SUMMERS WILDFIRE	09/07	JOSH CROLLARD	3	ICP/0600	ICP/2000	
E-5011 ENG6 COLORADO E681 (R&R - BACK 8/28)	08/21	TODD LIKE	5	ICP/0600	ICP/2000	
E- ENG6 REPUBLIC E622	09/06	GABE GIDDINGS	4	ICP/0600	ICP/2000	
E-22 WTS2 RAINS CONTRACTING	08/29	JIM HUTTON	1	ICP/0600	ICP/2000	
E-23 WTS1 OROVILLE TRANSIT MIX	08/30	CHRIS WOOLEY	3	ICP/0600	ICP/2000	
E-196 PCT3 TUNK PUMPER CAT	09/04	CLARENCE FINLEY	2	ICP/0600	ICP/2000	
8. Division/Group Communication Summary						
Function	Channel	RX Frequency N/W	RX Tone/NAC	TX Frequency N/W	TX Tone/NAC	Mode
COMMAND	1	170.0625	114.8	162.1750	114.8	A
COMMAND	2	170.3125	114.8	167.8375	114.8	A
COMMAND	3	170.4500	114.8	168.1000	114.8	A
TACTICAL	6	168.0500	114.8	168.0500	114.8	A
AIR TO GROUND	15	168.1375		168.1375		A
9. Prepared By (Resource Unit Leader)			Approved By (Planning Section Chief)		Date	Time
JILL JOHNSON			NATHAN JEFFRIES		08/26/2021	2000

Division/Group Assignment List (ICS 204 WF)

Controlled Unclassified Information//Basic

1. Incident Name:			3.			
WALKER CREEK & CHICKADEE CREEK			I		A	
2. Operational Period: DAY/NIGHT						
Date/Time From: 08/27/2021 0600 FRI		Date/Time To: 08/28/2021 0800 SAT				
4. Operations Personnel						
OPERATIONS CHIEF		TONY ENGEL; AARON ROWE JEROMY WILSON (T)		BRANCH DIRECTOR		CHRIS ZOLLER
SAFETY OFFICER		TROY CORN JACK CATES		DIVISION/GROUP SUPERVISOR		TY GRIPP
5. Resources Assigned this Period						
Strike Team / Task Force / Resource Designator		LWD	Leader	Number Persons	Drop Off PT./Time	Pick Up PT./Time
O-211 EMTF		08/28	CODY BARWELL	1	ICP/0600	ICP/2000
6. Control Operations/Work Assignments:						
<p>TASK: Patrol and Monitor. PURPOSE: Minimize impact to structures and values at risk. END STATE: The fire cannot threaten any values at risk.</p> <p>TASK: Patrol and mop up areas that threaten values at risk. PURPOSE: Protect Values at risk. END STATE: Fire does not pose a threat to any critical values within or adjacent to the division.</p>						
7. Special Instructions:						
Division Breakout will be at DP354						
8. Division/Group Communication Summary						
Function	Channel	RX Frequency N/W	RX Tone/NAC	TX Frequency N/W	TX Tone/NAC	Mode
COMMAND	1	170.0625	114.8	162.1750	114.8	A
COMMAND	2	170.3125	114.8	167.8375	114.8	A
COMMAND	3	170.4500	114.8	168.1000	114.8	A
TACTICAL	6	168.0500	114.8	168.0500	114.8	A
AIR TO GROUND	15	168.1375		168.1375		A
9. Prepared By (Resource Unit Leader)			Approved By (Planning Section Chief)		Date	Time
JILL JOHNSON			NATHAN JEFFRIES		08/26/2021	2000

Division/Group Assignment List (ICS 204 WF)
Controlled Unclassified Information//Basic

1. Incident Name:				3.		
WALKER CREEK & CHICKADEE CREEK				Branch: I	Division/Group F	
2. Operational Period: DAY/NIGHT						
Date/Time From: 08/27/2021 0600 FRI		Date/Time To: 08/28/2021 0800 SAT				
4. Operations Personnel						
OPERATIONS CHIEF		TONY ENGEL; AARON ROWE JEROMY WILSON (T)		BRANCH DIRECTOR		ZOLLER, CHRIS
SAFETY OFFICER		TROY CORN; JACK CATES		DIVISION/GROUP SUPERVISOR		CODY ACORD SCOTT NIELSEN (T)
5. Resources Assigned this Period						
Strike Team / Task Force / Resource Designator	LWD	Leader	Number Persons	Drop Off PT./Time	Pick Up PT./Time	
O-435 SOF2	09/11	JOSH NORTHRUP	1	ICP/0600	ICP/2000	
O-330 SOFR (T)	09/03	PHILLIP GRAHAM	1	ICP/0600	ICP/2000	
O-313.11 TFLD	08/28	JONATHAN ZIEGLER	1	ICP/0600	ICP/2000	
O-350 TFLD (T)	09/06	CORY FISCHER	1	ICP/0600	ICP/2000	
O-260 STEN	09/01	DAVID HADLEY	1	ICP/0600	ICP/2000	
O-191 FMOD LL MEADOW WILDFIRE INC	08/27	TONY SMITH	2	ICP/0600	ICP/2000	
O-422 SMOD REPUBLIC C-201		BRAD FREDRICKSON	1	ICP/0600	ICP/2000	
C-82 HC2 NORTH REFORESTATION CO	09/08	LUIS PEREZ	20	ICP/0600	ICP/2000	
E-5 ENG3 ARCHER MOUNTAIN	08/29	TOM HATTON	3	ICP/0600	ICP/2000	
E-87 ENG6 OK-OKS EC 95	09/02	JUSTIN L HOOPENGARNER	3	ICP/0600	ICP/2000	
E-95 ENG6 TENNESSEE E3762	08/31	DILLON MASH	3	ICP/0600	ICP/2000	
E-213 ENG4 IDAHO E441	08/27	MATT HAUPT	6	ICP/0600	ICP/2000	
E-215 ENG4 GOODING E91826	08/30	MITCH KISSEL	3	ICP/0600	ICP/2000	
E-217 ENG6 ACCESS FIRE	09/04	KEN VIRDEN	3	ICP/0600	ICP/2000	
E-218 ENG4 IDAHO HEATSEEKER 19	09/04	CASEY JOHNSON	3	ICP/0600	ICP/2000	
E-235 ENG6 SPOKANE B51	09/03	JOSH SAMPSON	3	ICP/0600	ICP/2000	
8. Division/Group Communication Summary						
Function	Channel	RX Frequency N/W	RX Tone/NAC	TX Frequency N/W	TX Tone/NAC	Mode
COMMAND	1	170.0625	114.8	162.1750	114.8	A
COMMAND	2	170.3125	114.8	167.8375	114.8	A
COMMAND	3	170.4500	114.8	168.1000	114.8	A
TACTICAL	7	168.2000	114.8	168.2000	114.8	A
AIR TO GROUND	15	168.1375		168.1375		A
9. Prepared By (Resource Unit Leader)			Approved By (Planning Section Chief)		Date	Time
JILL JOHNSON			NATHAN JEFFRIES		08/26/2021	2000

Division/Group Assignment List (ICS 204 WF)

Controlled Unclassified Information//Basic

1. Incident Name:				3.			
WALKER CREEK & CHICKADEE CREEK				Branch:		Division/Group	
2. Operational Period: DAY/NIGHT				I		F	
Date/Time From: 08/27/2021 0600 FRI		Date/Time To: 08/28/2021 0800 SAT					
4. Operations Personnel							
OPERATIONS CHIEF		TONY ENGEL; AARON ROWE JEROMY WILSON (T)		BRANCH DIRECTOR		ZOLLER, CHRIS	
SAFETY OFFICER		TROY CORN; JACK CATES		DIVISION/GROUP SUPERVISOR		CODY ACORD SCOTT NIELSEN (T)	
5. Resources Assigned this Period							
Strike Team / Task Force / Resource Designator		LWD	Leader	Number Persons	Drop Off PT./Time	Pick Up PT./Time	
E-236 ENG3 WA-SPFN 3		09/03	DENNIS STARRING	3	ICP/0600	ICP/2000	
E-256 ENG5 WILD FIRE SERVICES		09/07	JAMIE RODOM	1	ICP/0600	ICP/2000	
E-135 WTS2 FOX CREEK ENTERPRISES		08/30	MAUREEN WEST	1	ICP/0600	ICP/2000	
E-174 WTS2 STOTTS CONSTRUCTION		08/27	DAVID HARCOURT	1	ICP/0600	ICP/2000	
E-175 WTS3 STOTTS CONSTRUCTION		09/01	JOSEPH HUDSON	1	ICP/0600	ICP/2000	
E-1S DOZ3 JONES LOGGING			JASON JONES	2	ICP/0600	ICP/2000	
E-89 DOZ3 TJ LOGGING, LLC		08/29	TED JONES	2	ICP/0600	ICP/2000	
E-90 DOZ3 PRICE EXCAVATION, LLC		09/06	DEVIN MCKINNEY	2	ICP/0600	ICP/2000	
E-146 EXCA STOTTS CONSTRUCTION		09/01	MILES ANDERSON	2	ICP/0600	ICP/2000	
O-393 EMPF		09/07	ROSS BYRD	1	ICP/0600	ICP/2000	
8. Division/Group Communication Summary							
Function	Channel	RX Frequency N/W	RX Tone/NAC	TX Frequency N/W	TX Tone/NAC	Mode	
COMMAND	1	170.0625	114.8	162.1750	114.8	A	
COMMAND	2	170.3125	114.8	167.8375	114.8	A	
COMMAND	3	170.4500	114.8	168.1000	114.8	A	
TACTICAL	7	168.2000	114.8	168.2000	114.8	A	
AIR TO GROUND	15	168.1375		168.1375		A	
9. Prepared By (Resource Unit Leader)			Approved By (Planning Section Chief)			Date	Time
JILL JOHNSON			NATHAN JEFFRIES			08/26/2021	2000

Division/Group Assignment List (ICS 204 WF)

Controlled Unclassified Information//Basic

1. Incident Name:				3.			
WALKER CREEK & CHICKADEE CREEK				I		F	
2. Operational Period: DAY/NIGHT							
Date/Time From: 08/27/2021 0600 FRI		Date/Time To: 08/28/2021 0800 SAT					
4. Operations Personnel							
OPERATIONS CHIEF		TONY ENGEL; AARON ROWE JEROMY WILSON (T)		BRANCH DIRECTOR		ZOLLER, CHRIS	
SAFETY OFFICER		TROY CORN; JACK CATES		DIVISION/GROUP SUPERVISOR		CODY ACORD SCOTT NIELSEN (T)	
5. Resources Assigned this Period							
Strike Team / Task Force / Resource Designator		LWD	Leader	Number Persons	Drop Off PT./Time	Pick Up PT./Time	
6. Control Operations/Work Assignments:							
<p>TASK: Locate, assess, and prep any structures within the Division. PURPOSE: Identify mitigation needs to protect structures. END STATE: Structures are defensible.</p> <p>TASK: Construct indirect fireline. PURPOSE: Keep fire from impacting values at risk. END STATE: Fire line in the correct location with the right dimensions to contain the fire.</p>							
7. Special Instructions:							
Division breakout will be at the gravel pit.							
8. Division/Group Communication Summary							
Function	Channel	RX Frequency N/W	RX Tone/NAC	TX Frequency N/W	TX Tone/NAC	Mode	
COMMAND	1	170.0625	114.8	162.1750	114.8	A	
COMMAND	2	170.3125	114.8	167.8375	114.8	A	
COMMAND	3	170.4500	114.8	168.1000	114.8	A	
TACTICAL	7	168.2000	114.8	168.2000	114.8	A	
AIR TO GROUND	15	168.1375		168.1375		A	
9. Prepared By (Resource Unit Leader)			Approved By (Planning Section Chief)			Date	Time
JILL JOHNSON			NATHAN JEFFRIES			08/26/2021	2000

Division/Group Assignment List (ICS 204 WF)
Controlled Unclassified Information//Basic

1. Incident Name:			3.			
WALKER CREEK & CHICKADEE CREEK			Branch:		Division/Group	
2. Operational Period: DAY/NIGHT			I		H	
Date/Time From: 08/27/2021 0600	FRI	Date/Time To: 08/28/2021 0800				
4. Operations Personnel						
OPERATIONS CHIEF		TONY ENGEL; AARON ROWE JEROMY WILSON (T)		BRANCH DIRECTOR		ZOLLER, CHRIS
SAFETY OFFICER		TROY CORN; JACK CATES		DIVISION/GROUP SUPERVISOR		MATT KENNEDY MIKE MEGEL
5. Resources Assigned this Period						
Strike Team / Task Force / Resource Designator	LWD	Leader	Number Persons	Drop Off PT./Time	Pick Up PT./Time	
O-435 SOF2	09/11	JOSH NORTHRUP	1	ICP/0600	ICP/2000	
O-330 SOFR (T)	09/03	PHILLIP GRAHAM	1	ICP/0600	ICP/2000	
E-129.1 TFLD (T)	08/30	DARCY BODY	1	ICP/0600	ICP/2000	
O-342 TFLD	09/05	JEFF MEADOWS	1	ICP/0600	ICP/2000	
O-223 STEN (T)	08/28	STU HODNOT	1	ICP/0600	ICP/2000	
O-351 HEQB (T)	09/05	JADE DRAUSE	1	ICP/0600	ICP/2000	
O-192 FMOD LL MEADOW WILDFIRE	08/27	RICK WARD	2	ICP/0600	ICP/2000	
C-78 HC1 BONNEVILLE IHC	09/08	ERIC EVANS	20	ICP/0600	ICP/2000	
C-26 HC2I TONASKET (LOAN)	08/28	JUNIPER MASON	16	ICP/0600	ICP/2000	
C-65 HC2 PR REFORESTATION INC	09/04	JARIO SILVA	20	ICP/0600	ICP/2000	
C-68 HC2 SZ FORESTRY	08/31	RICHARD FULLERTON	20	ICP/0600	ICP/2000	
E-6S ENG6 WORK HORSE	09/07	TY STRATIT	2	ICP/0600	ICP/2000	
E-129 ENG6 TONASKET RD E691	08/30	TAYLOR ORTEG	3	ICP/0600	ICP/2000	
E-163 ENG6 BRUSH 53 COWLITZ	08/26	VICTOR LEATZOW	3	ICP/0600	ICP/2000	
E-166 ENG5 COWLITZ COUNTY	08/28	ZACHARY HAYDEN	2	ICP/0600	ICP/2000	
E-216 ENG3 TFD-2301	09/04	MICHAEL JOHNSON	3	ICP/0600	ICP/2000	
8. Division/Group Communication Summary						
Function	Channel	RX Frequency N/W	RX Tone/NAC	TX Frequency N/W	TX Tone/NAC	Mode
COMMAND	1	170.0625	114.8	162.1750	114.8	A
COMMAND	2	170.3125	114.8	167.8375	114.8	A
COMMAND	3	170.4500	114.8	168.1000	114.8	A
TACTICAL	8	168.6000	114.8	168.6000	114.8	A
AIR TO GROUND	15	168.1375		168.1375		A
9. Prepared By (Resource Unit Leader)		Approved By (Planning Section Chief)			Date	Time
JILL JOHNSON		NATHAN JEFFRIES			08/26/2021	2000

Division/Group Assignment List (ICS 204 WF)
Controlled Unclassified Information//Basic

1. Incident Name:				3.		
WALKER CREEK & CHICKADEE CREEK				Branch: I	Division/Group H	
2. Operational Period: DAY/NIGHT						
Date/Time From: 08/27/2021 0600 FRI		Date/Time To: 08/28/2021 0800 SAT				
4. Operations Personnel						
OPERATIONS CHIEF		TONY ENGEL; AARON ROWE JEROMY WILSON (T)		BRANCH DIRECTOR		ZOLLER, CHRIS
SAFETY OFFICER		TROY CORN; JACK CATES		DIVISION/GROUP SUPERVISOR		MATT KENNEDY MIKE MEGEL
5. Resources Assigned this Period						
Strike Team / Task Force / Resource Designator		LWD	Leader	Number Persons	Drop Off PT./Time	Pick Up PT./Time
E-5003 ENG6 TONASKET RD E612 (LOAN)		08/30	KYLE KERSTIENS	3	ICP/0600	ICP/2000
E-254 WTT2 STEVENS COUNTY T9		09/05	ZACHARY WOLF	2	ICP/0600	ICP/2000
E-223 DOZ2 SILVER-NICKEL LOGGING		09/01	DOC COMBS	2	ICP/0600	ICP/2000
E-13C DOZ1 BOB MCDANIEL LOGGING		08/28	BOB MCDANIEL	1	ICP/0600	ICP/2000
E-32S DOZ4 BOB MCDANIEL LOGGING		09/07	KEN MICHAELS	1	ICP/0600	ICP/2000
E-131 EXCA (MINI) TONASKET RD		09/04	DENISON/ WILLIAMS	2	ICP/0600	ICP/2000
E-272 EXCA NORTH COLUMBIA ENTERPRISES		09/07	SCOTT BUTTERFIELD	2	ICP/0600	ICP/2000
E-8C FEL1 SILVER NICKEL LOGGING		09/05	CHARLES JONES	2	ICP/0600	ICP/2000
E-141 FEL1 BOB MCDANIEL		08/23	RODOLPHO RODRIQUEZ	1	ICP/0600	ICP/2000
E-142 FEL1 WILL LOGGING & CONSTRUCTIO		08/23	ADAM BAKER	1	ICP/0600	ICP/2000
E-143 FEL1 TJ LOGGING		08/25	TIM JONES	2	ICP/0600	ICP/2000
E-147 FEL1 SILVER NICKEL LLC		09/07	MARK SMITH	2	ICP/0600	ICP/2000
E-148 FEL1 SILVER NICKEL LOGGING		08/25	RYAN WHITMORE	2	ICP/0600	ICP/2000
E-182 FEL1 BOB MCDANIEL LOGGING		08/30	JAKE BLACK	1	ICP/0600	ICP/2000
E-9C SKD1 SILVER NICKEL LOGGING		09/07	NIK BROOKS	1	ICP/0600	ICP/2000
E-10C SKD1 SILVER NICKEL LOGGING		09/01	RILEY BURK	2	ICP/0600	ICP/2000
E-11C SKD1 SILVER NICKEL LOGGING		09/02	JOE KIDDERMAN	2	ICP/0600	ICP/2000
8. Division/Group Communication Summary						
Function	Channel	RX Frequency N/W	RX Tone/NAC	TX Frequency N/W	TX Tone/NAC	Mode
COMMAND	1	170.0625	114.8	162.1750	114.8	A
COMMAND	2	170.3125	114.8	167.8375	114.8	A
COMMAND	3	170.4500	114.8	168.1000	114.8	A
TACTICAL	8	168.6000	114.8	168.6000	114.8	A
AIR TO GROUND	15	168.1375		168.1375		A
9. Prepared By (Resource Unit Leader)			Approved By (Planning Section Chief)		Date	Time
JILL JOHNSON			NATHAN JEFFRIES		08/26/2021	2000

Division/Group Assignment List (ICS 204 WF)
Controlled Unclassified Information//Basic

1. Incident Name:				3.		
WALKER CREEK & CHICKADEE CREEK				Branch: I	Division/Group H	
2. Operational Period: DAY/NIGHT						
Date/Time From: 08/27/2021 0600 FRI		Date/Time To: 08/28/2021 0800 SAT				
4. Operations Personnel						
OPERATIONS CHIEF		TONY ENGEL; AARON ROWE JEROMY WILSON (T)		BRANCH DIRECTOR		ZOLLER, CHRIS
SAFETY OFFICER		TROY CORN; JACK CATES		DIVISION/GROUP SUPERVISOR		MATT KENNEDY MIKE MEGEL
5. Resources Assigned this Period						
Strike Team / Task Force / Resource Designator	LWD	Leader	Number Persons	Drop Off PT./Time	Pick Up PT./Time	
E-144 SKD4 TJ LOGGING	09/01	WADE FIELD	1	ICP/0600	ICP/2000	
E-145 SKD1 WILL LOGGING & CONSTRUCTION LLC		COLTEN GRONLUND	1	ICP/0600	ICP/2000	
E-183 SKD1 BOB MCDANIAL LOGGING	09/05	BRANDON WHEELER	1	ICP/0600	ICP/2000	
E-113 SKG2 YELLOW JACKET FIRE EQUIPMENT	08/23	NICK BADENHOP	2	ICP/0600	ICP/2000	
E-139 SKG1 SOFT TRACK ATTACK	09/08		2	ICP/0600	ICP/2000	
E-160 LDFR SILVER NICKEL LOGGING	09/07	DUSTIN SILVERTHORN	1	ICP/0600	ICP/2000	
O-245 EMPF	08/30	RICHARD SEWELL	1	ICP/0600	ICP/2000	
6. Control Operations/Work Assignments:						
TASK: Construct and prep direct and indirect fireline.						
PURPOSE: Prepare for burnout operations.						
END STATE: Fireline in the correct location with the right dimensions to contain the fire.						
TASK: Mop up fireline from FS-33 Road to DIV H/Q break.						
PURPOSE: Keep fire inside a line.						
END STATE: Flames and smoke are not a threat to escape fireline.						
7. Special Instructions:						
8. Division/Group Communication Summary						
Function	Channel	RX Frequency N/W	RX Tone/NAC	TX Frequency N/W	TX Tone/NAC	Mode
COMMAND	1	170.0625	114.8	162.1750	114.8	A
COMMAND	2	170.3125	114.8	167.8375	114.8	A
COMMAND	3	170.4500	114.8	168.1000	114.8	A
TACTICAL	8	168.6000	114.8	168.6000	114.8	A
AIR TO GROUND	15	168.1375		168.1375		A
9. Prepared By (Resource Unit Leader)			Approved By (Planning Section Chief)		Date	Time
JILL JOHNSON			NATHAN JEFFRIES		08/26/2021	2000

Division/Group Assignment List (ICS 204 WF)

Controlled Unclassified Information//Basic

1. Incident Name:		3.	
WALKER CREEK & CHICKADEE CREEK		I	H
2. Operational Period: DAY/NIGHT			
Date/Time From: 08/27/2021 0600 FRI	Date/Time To: 08/28/2021 0800 SAT		
4. Operations Personnel			
OPERATIONS CHIEF	TONY ENGEL; AARON ROWE JEROMY WILSON (T)	BRANCH DIRECTOR	ZOLLER, CHRIS
SAFETY OFFICER	TROY CORN; JACK CATES	DIVISION/GROUP SUPERVISOR	MATT KENNEDY MIKE MEGEL

7. Special Instructions:
Division breakout will be at the park pavilion.

8. Division/Group Communication Summary						
Function	Channel	RX Frequency N/W	RX Tone/NAC	TX Frequency N/W	TX Tone/NAC	Mode
COMMAND	1	170.0625	114.8	162.1750	114.8	A
COMMAND	2	170.3125	114.8	167.8375	114.8	A
COMMAND	3	170.4500	114.8	168.1000	114.8	A
TACTICAL	8	168.6000	114.8	168.6000	114.8	A
AIR TO GROUND	15	168.1375		168.1375		A

9. Prepared By (Resource Unit Leader)	Approved By (Planning Section Chief)	Date	Time
JILL JOHNSON	NATHAN JEFFRIES	08/26/2021	2000

Division/Group Assignment List (ICS 204 WF)
Controlled Unclassified Information//Basic

1. Incident Name:				3.		
WALKER CREEK & CHICKADEE CREEK				Branch: II	Division/Group Q	
2. Operational Period: DAY/NIGHT						
Date/Time From: 08/27/2021 0600 FRI		Date/Time To: 08/28/2021 0800 SAT				
4. Operations Personnel						
OPERATIONS CHIEF		TONY ENGEL; AARON ROWE JEROMY WILSON (T)		BRANCH DIRECTOR		JERRAN FLINDERS
SAFETY OFFICER		TROY CORN; JACK CATES		DIVISION/GROUP SUPERVISOR		MICHAEL GOOD JAMES DICKINSON (T)
5. Resources Assigned this Period						
Strike Team / Task Force / Resource Designator	LWD	Leader	Number Persons	Drop Off PT./Time	Pick Up PT./Time	
O-435 SOF2	09/11	JOSH NORTHRUP	1	ICP/0600	ICP/2000	
O-330 SOFR (T)	09/03	PHILLIP GRAHAM	1	ICP/0600	ICP/2000	
O-285 HEQB	09/01	TRISTAN CURRIN	1	ICP/0600	ICP/2000	
E-130.1 HEQB (T)	08/30	JEFFREY BABB	1	ICP/0600	ICP/2000	
E-120 ENG6 ARCHER MOUNTAIN ENTERPRISES	09/03	JUSTUS BARTON	3	ICP/0600	ICP/2000	
E-130 ENG6 TONASKET RD E692	08/30	DAVE HYLTON	3	ICP/0600	ICP/2000	
E-4C FEL1 WILL LOGGING & CONSTR	09/03	BRANDON LATIMER	1	ICP/0600	ICP/2000	
E-31C FEL1 NORTH PINE	09/04	SCOTT HUGHES	1	ICP/0600	ICP/2000	
E-231 FEL1 MCCUEN	09/03	NATHAN JOHNSON	2	ICP/0600	ICP/2000	
E-232 FEL2 NORTH COLUMBIA ENTERPRISES	09/04	DAN LOTZ	2	ICP/0600	ICP/2000	
E-237 LOG PROCESSOR WILL LOGGING	09/04	JASON SUTTON	2	ICP/0600	ICP/2000	
E-3C SKD1 WILL LOGGING & CONSTR	09/07	SHANE HIGBEE	1	ICP/0600	ICP/2000	
E-233 SKD2 NORTH COLUMBIA ENTERPR	09/03	DALLES CRAPE	2	ICP/0600	ICP/2000	
E-234 SKD2 NORTH COLUMBIA ENTERPRISES	09/03	TOM LOTZE	2	ICP/0600	ICP/2000	
E-199 MAST MAST EAGLE CAP	08/31	BEN FISCHER	2	ICP/0600	ICP/2000	
8. Division/Group Communication Summary						
Function	Channel	RX Frequency N/W	RX Tone/NAC	TX Frequency N/W	TX Tone/NAC	Mode
COMMAND	1	170.0625	114.8	162.1750	114.8	A
COMMAND	2	170.3125	114.8	167.8375	114.8	A
COMMAND	3	170.4500	114.8	168.1000	114.8	A
TACTICAL	11	168.2500	114.8	168.2500	114.8	A
AIR TO GROUND	15	168.1375		168.1375		A
9. Prepared By (Resource Unit Leader)			Approved By (Planning Section Chief)		Date	Time
JILL JOHNSON			NATHAN JEFFRIES		08/26/2021	2000

Division/Group Assignment List (ICS 204 WF)
Controlled Unclassified Information//Basic

1. Incident Name:				3.		
WALKER CREEK & CHICKADEE CREEK				Branch: II	Division/Group Q	
2. Operational Period: DAY/NIGHT						
Date/Time From: 08/27/2021 0600 FRI		Date/Time To: 08/28/2021 0800 SAT				
4. Operations Personnel						
OPERATIONS CHIEF		TONY ENGEL; AARON ROWE JEROMY WILSON (T)		BRANCH DIRECTOR		JERRAN FLINDERS
SAFETY OFFICER		TROY CORN; JACK CATES		DIVISION/GROUP SUPERVISOR		MICHAEL GOOD JAMES DICKINSON (T)
5. Resources Assigned this Period						
Strike Team / Task Force / Resource Designator		LWD	Leader	Number Persons	Drop Off PT./Time	Pick Up PT./Time
E-200 MAST BRUCE YOUNG LOGGING		09/07	MATT MCLAREN	2	ICP/0600	ICP/2000
E-277 MAST SWEDBERG CONTRACTING CORP.		09/09	STEVEN MEDDOCK	2	ICP/0600	ICP/2000
O-221 EMPF		09/05	DAVE BRIDGES	1	ICP/0600	ICP/2000
6. Control Operations/Work Assignments:						
TASK: Prep indirect fireline between DIV H/Q to DIV Q/T. PURPOSE: Prep indirect fireline. END STATE: Fireline in the correct location with the right dimensions to contain the fire.						
7. Special Instructions:						
Division breakout will be at H30						
8. Division/Group Communication Summary						
Function	Channel	RX Frequency N/W	RX Tone/NAC	TX Frequency N/W	TX Tone/NAC	Mode
COMMAND	1	170.0625	114.8	162.1750	114.8	A
COMMAND	2	170.3125	114.8	167.8375	114.8	A
COMMAND	3	170.4500	114.8	168.1000	114.8	A
TACTICAL	11	168.2500	114.8	168.2500	114.8	A
AIR TO GROUND	15	168.1375		168.1375		A
9. Prepared By (Resource Unit Leader)			Approved By (Planning Section Chief)		Date	Time
JILL JOHNSON			NATHAN JEFFRIES		08/26/2021	2000

Division/Group Assignment List (ICS 204 WF)

Controlled Unclassified Information//Basic

1. Incident Name:				3.			
WALKER CREEK & CHICKADEE CREEK				Branch:		Division/Group	
2. Operational Period: DAY/NIGHT				II		T	
Date/Time From: 08/27/2021 0600 FRI		Date/Time To: 08/28/2021 0800 SAT					
4. Operations Personnel							
OPERATIONS CHIEF		TONY ENGEL; AARON ROWE JEROMY WILSON (T)		BRANCH DIRECTOR		JERRAN FLINDERS	
SAFETY OFFICER		TROY CORN; JACK CATES		DIVISION/GROUP SUPERVISOR		MICHAEL JACKSON REID MARQUART (T)	
5. Resources Assigned this Period							
Strike Team / Task Force / Resource Designator		LWD	Leader	Number Persons	Drop Off PT./Time	Pick Up PT./Time	
O-435 SOF2		09/11	JOSH NORTHRUP	1	ICP/0600	ICP/2000	
O-330 SOFR (T)		09/03	PHILLIP GRAHAM	1	ICP/0600	ICP/2000	
O-286 HEQB (T)		09/01	KEVIN CARLSEN	1	ICP/0600	ICP/2000	
O-222 STEN		08/28	KURT STICH	1	ICP/0600	ICP/2000	
O-23 FMOD BAILEY LOGGING		09/03	TAYLOR EVANS	2	ICP/0600	ICP/2000	
O-248 FMOD SWEDBERG CONTRACTING		08/30	JUSTIN FOSS	2	ICP/0600	ICP/2000	
C-22 HC2 PR REFORESTATION		09/01	MARCO MENDOZA	20	ICP/0600	ICP/2000	
E-124 ENG6 METHOW RIVER		08/28	IAN LINCE	3	ICP/0600	ICP/2000	
E-162 ENG6 COWLITZ 2 BR-21		08/28	ROBERT BELL	2	ICP/0600	ICP/2000	
E-164 ENG6 WAHIAKUM 4 BRUSH 405		08/28	MICHAEL JOHNSON	2	ICP/0600	ICP/2000	
E-165 ENG6 WAHIAKUM 4 E404		08/28	JACK LEAVITT	3	ICP/0600	ICP/2000	
E-185 ENG6 AEGIS LOGISTICS		08/28	JOHN QUERIN	3	ICP/0600	ICP/2000	
E-186 ENG6 AEGIS LOGISTICS		08/28	RANDY WIGGINS	2	ICP/0600	ICP/2000	
E-212 ENG4 FIRE WORKS		09/01	LAWRENCE GROVER	3	ICP/0600	ICP/2000	
E-220 ENG4 OWSLEY CANYON ENG CO		09/01	DANNY CALLAHAN	3	ICP/0600	ICP/2000	
8. Division/Group Communication Summary							
Function	Channel	RX Frequency N/W	RX Tone/NAC	TX Frequency N/W	TX Tone/NAC	Mode	
COMMAND	1	170.0625	114.8	162.1750	114.8	A	
COMMAND	2	170.3125	114.8	167.8375	114.8	A	
COMMAND	3	170.4500	114.8	168.1000	114.8	A	
TACTICAL	9	166.7250	114.8	166.7250	114.8	A	
AIR TO GROUND	15	168.1375		168.1375		A	
9. Prepared By (Resource Unit Leader)			Approved By (Planning Section Chief)			Date	Time
JILL JOHNSON			NATHAN JEFFRIES			08/26/2021	2000

Division/Group Assignment List (ICS 204 WF)

Controlled Unclassified Information//Basic

1. Incident Name:				3.			
WALKER CREEK & CHICKADEE CREEK				Branch:		Division/Group	
2. Operational Period: DAY/NIGHT				II		T	
Date/Time From: 08/27/2021 0600 FRI		Date/Time To: 08/28/2021 0800 SAT					
4. Operations Personnel							
OPERATIONS CHIEF		TONY ENGEL; AARON ROWE JEROMY WILSON (T)		BRANCH DIRECTOR		JERRAN FLINDERS	
SAFETY OFFICER		TROY CORN; JACK CATES		DIVISION/GROUP SUPERVISOR		MICHAEL JACKSON REID MARQUART (T)	
5. Resources Assigned this Period							
Strike Team / Task Force / Resource Designator		LWD	Leader	Number Persons	Drop Off PT./Time	Pick Up PT./Time	
E-42 WTS2 EVAN FINK		08/29	EVAN FINK	1	ICP/0600	ICP/2000	
E-20C DOZ3 SILVER-NICKEL LOGGING		08/19	GERALD SCHOLZ	2	ICP/0600	ICP/2000	
E-80 DOZ3 MCMILLAN CONSTRUCTION		08/20	DOUG MCMILLAN	2	ICP/0600	ICP/2000	
E-92 DOZ2 PRICE EXCAVATION LLC		09/03	JAMES PRICE	2	ICP/0600	ICP/2000	
E-181 DOZ3 MC NALL CONSTRUCTION		09/08	BRYAN TIM	2	ICP/0600	ICP/2000	
E-114 SKDS SOFT TRACK ATTACK		08/30	STEVE BONNER	2	ICP/0600	ICP/2000	
O-396.1 EMPF		09/06	LUIS MARIN	1	ICP/0600	ICP/2000	
8. Division/Group Communication Summary							
Function	Channel	RX Frequency N/W	RX Tone/NAC	TX Frequency N/W	TX Tone/NAC	Mode	
COMMAND	1	170.0625	114.8	162.1750	114.8	A	
COMMAND	2	170.3125	114.8	167.8375	114.8	A	
COMMAND	3	170.4500	114.8	168.1000	114.8	A	
TACTICAL	9	166.7250	114.8	166.7250	114.8	A	
AIR TO GROUND	15	168.1375		168.1375		A	
9. Prepared By (Resource Unit Leader)			Approved By (Planning Section Chief)			Date	Time
JILL JOHNSON			NATHAN JEFFRIES			08/26/2021	2000

Division/Group Assignment List (ICS 204 WF)
Controlled Unclassified Information//Basic

1. Incident Name:			3.			
WALKER CREEK & CHICKADEE CREEK			Branch:		Division/Group	
2. Operational Period: DAY/NIGHT			II		T	
Date/Time From: 08/27/2021 0600	FRI	Date/Time To: 08/28/2021 0800				
4. Operations Personnel						
OPERATIONS CHIEF		TONY ENGEL; AARON ROWE JEROMY WILSON (T)		BRANCH DIRECTOR		JERRAN FLINDERS
SAFETY OFFICER		TROY CORN; JACK CATES		DIVISION/GROUP SUPERVISOR		MICHAEL JACKSON REID MARQUART (T)
5. Resources Assigned this Period						
Strike Team / Task Force / Resource Designator	LWD	Leader	Number Persons	Drop Off PT./Time	Pick Up PT./Time	
6. Control Operations/Work Assignments:						
<p>TASK: Construct direct and indirect fireline. PURPOSE: Keep fire from impacting values at risk. END STATE: Fireline in the correct location with the right dimensions to contain the fire.</p> <p>TASK: Continue mop up where appropriate commensurate with the values at risk. PURPOSE: Prevent loss or damage to private property and structures. END STATE: Defensible space is maintained around structures.</p> <p>TASK: Hold Fireline. PURPOSE: Contain fire edge from Lake Bonaparte Road to indirect line on Road 3230. END STATE: Fireline in the correct location with the right dimensions to contain the fire.</p>						
7. Special Instructions:						
Division breakout will be at DP-372.						
8. Division/Group Communication Summary						
Function	Channel	RX Frequency N/W	RX Tone/NAC	TX Frequency N/W	TX Tone/NAC	Mode
COMMAND	1	170.0625	114.8	162.1750	114.8	A
COMMAND	2	170.3125	114.8	167.8375	114.8	A
COMMAND	3	170.4500	114.8	168.1000	114.8	A
TACTICAL	9	166.7250	114.8	166.7250	114.8	A
AIR TO GROUND	15	168.1375		168.1375		A
9. Prepared By (Resource Unit Leader)			Approved By (Planning Section Chief)		Date	Time
JILL JOHNSON			NATHAN JEFFRIES		08/26/2021	2000

Division/Group Assignment List (ICS 204 WF)
Controlled Unclassified Information//Basic

1. Incident Name:				3.		
WALKER CREEK & CHICKADEE CREEK				Branch: III	Division/Group C	
2. Operational Period: DAY/NIGHT						
Date/Time From: 08/27/2021 0600 FRI		Date/Time To: 08/28/2021 0800 SAT				
4. Operations Personnel						
OPERATIONS CHIEF		TONY ENGEL; AARON ROWE JEROMY WILSON (T)		BRANCH DIRECTOR		PAUL HOHN
SAFETY OFFICER		TROY CORN; JACK CATES		DIVISION/GROUP SUPERVISOR		BOB HINDS
5. Resources Assigned this Period						
Strike Team / Task Force / Resource Designator	LWD	Leader	Number Persons	Drop Off PT./Time	Pick Up PT./Time	
O-434 SOFR	09/08	DAN GARNER	1	ICP/0600	ICP/2000	
O-177 TFLD	08/18	MICHAEL NICK	1	ICP/0600	ICP/2000	
O-294 TFLD	09/02	SHANNON MOORE	1	ICP/0600	ICP/2000	
O-377 TFLD	09/07	STEPHEN DECOOK	1	ICP/0600	ICP/2000	
O-423 HEQB (LOAN)	09/09	KYLE BUCKMILLER	1	ICP/0600	ICP/2000	
O-9002 HEQB (LOAN)	09/08	SKYLER GOODRICH	1	ICP/0600	ICP/2000	
O-9006 HEQB (LOAN)	09/08	MATT SMITH	1	ICP/0600	ICP/2000	
O-247 FMOD BROTHERS FIRE LLC	08/29	TOM HOFFMAN	2	ICP/0600	ICP/2000	
C-69 HC2I DIAMOND FIRE 2B	08/31	BRADLEY EMERY	20	ICP/0600	ICP/2000	
C-80 HC2 COLVILLE 1	09/08	DESMOND YAZZIE	21	ICP/0600	ICP/2000	
E-255 ENG4 WILD FIRE SERVICES	09/07	STEVE KURVAINK	3	ICP/0600	ICP/2000	
E-257 ENG5 METHOW RIVER WILD FIRE	09/07	ALEX WHITMAN	3	ICP/0600	ICP/2000	
E-16C WTS2 S PEND OREILLE T33	09/04	BRAD HANSON	1	ICP/0600	ICP/2000	
E-201 DOZ3 HAVILLAH LOGGING CO	08/30	DAVID GOYETTE	1	ICP/0600	ICP/2000	
E-12C DOZ2 KENNETH & DIANE SASSE	09/01	BURT SASSE	2	ICP/0600	ICP/2000	
E-29C DOZ4 GASHO & GASHO	08/31	ANDY GASHO	1	ICP/0600	ICP/2000	
8. Division/Group Communication Summary						
Function	Channel	RX Frequency N/W	RX Tone/NAC	TX Frequency N/W	TX Tone/NAC	Mode
COMMAND	1	170.0625	114.8	162.1750	114.8	A
COMMAND	2	170.3125	114.8	167.8375	114.8	A
COMMAND	3	170.4500	114.8	168.1000	114.8	A
TACTICAL	10	166.7750	114.8	166.7750	114.8	A
AIR TO GROUND	13	170.2625		170.2625		A
9. Prepared By (Resource Unit Leader)			Approved By (Planning Section Chief)		Date	Time
JILL JOHNSON			NATHAN JEFFRIES		08/26/2021	2000

Division/Group Assignment List (ICS 204 WF)

Controlled Unclassified Information//Basic

1. Incident Name:			3.				
WALKER CREEK & CHICKADEE CREEK			Branch:		Division/Group		
2. Operational Period: DAY/NIGHT			III		C		
Date/Time From: 08/27/2021 0600 FRI		Date/Time To: 08/28/2021 0800 SAT					
4. Operations Personnel							
OPERATIONS CHIEF		TONY ENGEL; AARON ROWE JEROMY WILSON (T)		BRANCH DIRECTOR	PAUL HOHN		
SAFETY OFFICER		TROY CORN; JACK CATES		DIVISION/GROUP SUPERVISOR	BOB HINDS		
5. Resources Assigned this Period							
Strike Team / Task Force / Resource Designator		LWD	Leader		Number Persons	Drop Off PT./Time	Pick Up PT./Time
E-23C GRD DOUBLE A LOGGING		08/31	TIM ACORD		1	ICP/0600	ICP/2000
E-14C EXCA WILL LOGGING & CONSTR		08/19	GARY WILLER SR		1	ICP/0600	ICP/2000
E-15C EXCA GASHO & GASHO		08/18	NICK MCCULLUM		1	ICP/0600	ICP/2000
E-17C FEL1 RIDGELINE FORESTRY		09/07	DARREN GOETZ		2	ICP/0600	ICP/2000
E-202 FEL1 HAVILLAH LOGGING		08/30	TOM KERSHNER		1	ICP/0600	ICP/2000
E-26 SKG1 WYEAST FORESTRY MANAGEMENT		08/30	BOYD GOLDFINCH		2	ICP/0600	ICP/2000
E-18C SKD2 RIDGELINE FORESTRY		08/30	MICHAEL GOETZ		2	ICP/0600	ICP/2000
E-21C SKD2 DOUBLE A LOGGING 1		09/08	NICKI PEREZ		1	ICP/0600	ICP/2000
E-205 SKD2 HAVILLAH LOGGING		08/30	DAVID BARTAN		1	ICP/0600	ICP/2000
E-204 MAST HAVILLAH LOGGIN		08/30	RICK CLOUGH		1	ICP/0600	ICP/2000
O-273 EMPF		09/06	KEVIN SMITH		1	ICP/0600	ICP/2000
O-160 EMTF		08/25	MARA LANDRUM		1	ICP/0600	ICP/2000
8. Division/Group Communication Summary							
Function	Channel	RX Frequency N/W	RX Tone/NAC	TX Frequency N/W	TX Tone/NAC	Mode	
COMMAND	1	170.0625	114.8	162.1750	114.8	A	
COMMAND	2	170.3125	114.8	167.8375	114.8	A	
COMMAND	3	170.4500	114.8	168.1000	114.8	A	
TACTICAL	10	166.7750	114.8	166.7750	114.8	A	
AIR TO GROUND	13	170.2625		170.2625		A	
9. Prepared By (Resource Unit Leader)			Approved By (Planning Section Chief)		Date	Time	
JILL JOHNSON			NATHAN JEFFRIES		08/26/2021	2000	

Division/Group Assignment List (ICS 204 WF)

Controlled Unclassified Information//Basic

1. Incident Name:			3.			
WALKER CREEK & CHICKADEE CREEK			Branch:		Division/Group	
2. Operational Period: DAY/NIGHT			III		C	
Date/Time From: 08/27/2021 0600	FRI	Date/Time To: 08/28/2021 0800	SAT			
4. Operations Personnel						
OPERATIONS CHIEF		TONY ENGEL; AARON ROWE JEROMY WILSON (T)		BRANCH DIRECTOR		
				PAUL HOHN		
SAFETY OFFICER		TROY CORN; JACK CATES		DIVISION/GROUP SUPERVISOR		
				BOB HINDS		
5. Resources Assigned this Period						
Strike Team / Task Force / Resource Designator		LWD	Leader	Number Persons	Drop Off PT./Time	Pick Up PT./Time
6. Control Operations/Work Assignments:						
<p>TASK: Improve both sides of fireline from Sarsapkin Road to DIV K/C. PURPOSE: Increase holding and ignition success for contingency lines. END STATE: Fireline in the correct location with the right dimensions to contain the fire.</p> <p>TASK: Secure spots from Chilsen Road to K/C break. PURPOSE: Prevent fire growth. END STATE: All spots outside the established fireline are extinguished.</p> <p>TASK: Patrol and monitor. PURPOSE: Identify and suppress slopovers and spots across Mill Hill Road. END STATE: Fire is patrolled for threatening fires and smokes.</p>						
7. Special Instructions:						
Division breakout will be at breezeway.						
8. Division/Group Communication Summary						
Function	Channel	RX Frequency N/W	RX Tone/NAC	TX Frequency N/W	TX Tone/NAC	Mode
COMMAND	1	170.0625	114.8	162.1750	114.8	A
COMMAND	2	170.3125	114.8	167.8375	114.8	A
COMMAND	3	170.4500	114.8	168.1000	114.8	A
TACTICAL	10	166.7750	114.8	166.7750	114.8	A
AIR TO GROUND	13	170.2625		170.2625		A
9. Prepared By (Resource Unit Leader)			Approved By (Planning Section Chief)		Date	Time
JILL JOHNSON			NATHAN JEFFRIES		08/26/2021	2000

Division/Group Assignment List (ICS 204 WF)
Controlled Unclassified Information//Basic

1. Incident Name:			3.			
WALKER CREEK & CHICKADEE CREEK			Branch:		Division/Group	
2. Operational Period: DAY/NIGHT			III		K	
Date/Time From: 08/27/2021 0600	FRI	Date/Time To: 08/28/2021 0800				
4. Operations Personnel						
OPERATIONS CHIEF		TONY ENGEL; AARON ROWE JEROMY WILSON (T)		BRANCH DIRECTOR		PAUL HOHN
SAFETY OFFICER		TROY CORN; JACK CATES		DIVISION/GROUP SUPERVISOR		CHET DIERINGER
5. Resources Assigned this Period						
Strike Team / Task Force / Resource Designator	LWD	Leader	Number Persons	Drop Off PT./Time	Pick Up PT./Time	
O-434 SOFR	09/08	DAN GARNER	1	ICP/0600	ICP/2000	
O-249 FMOD SWEDBERG CONTRACTING	08/30	KELLY COLTEN	2	ICP/0600	ICP/2000	
C-67 HC2I SRV #12	08/29	JULIAN JACOBO	18	ICP/0600	ICP/2000	
E-176 WTS2 BTNG WILDFIRE	08/28	LUKE JOHNSON	1	ICP/0600	ICP/2000	
E-112 SKDS SOFTTRACK ATTACK	09/08	PATRICK PRICE	2	ICP/0600	ICP/2000	
E-140 SKDS SPENCER LOGGING LLC	09/05	COLE SPENCER	2	ICP/0600	ICP/2000	
E-210 MAST AFM E-210	08/30	CHASE HILDERBRANDT	2	ICP/0600	ICP/2000	
O-220 EMTF	09/04	RYAN SATCHER	1	ICP/0600	ICP/2000	
6. Control Operations/Work Assignments:						
<p>TASK: Mop up fireline from DIV O/K to DIV K/C. PURPOSE: Keep fire within containment lines. END STATE: Flames and smoke are not a threat to escape fireline.</p> <p>TASK: Snag Chickadee and Wickiup Rd. PURPOSE: Prepare line for future burnout operations. END STATE: Fireline in the correct location with the right dimensions to contain the fire.</p>						
7. Special Instructions:						
Division breakout will be at breezeway.						
8. Division/Group Communication Summary						
Function	Channel	RX Frequency N/W	RX Tone/NAC	TX Frequency N/W	TX Tone/NAC	Mode
COMMAND	1	170.0625	114.8	162.1750	114.8	A
COMMAND	2	170.3125	114.8	167.8375	114.8	A
COMMAND	3	170.4500	114.8	168.1000	114.8	A
TACTICAL	7	168.2000	114.8	168.2000	114.8	A
AIR TO GROUND	13	170.2625		170.2625		A
9. Prepared By (Resource Unit Leader)			Approved By (Planning Section Chief)		Date	Time
JILL JOHNSON			NATHAN JEFFRIES		08/26/2021	2000

Division/Group Assignment List (ICS 204 WF)
Controlled Unclassified Information//Basic

1. Incident Name:				3.		
WALKER CREEK & CHICKADEE CREEK				Branch: III	Division/Group O	
2. Operational Period: DAY/NIGHT						
Date/Time From: 08/27/2021 0600 FRI		Date/Time To: 08/28/2021 0800 SAT				
4. Operations Personnel						
OPERATIONS CHIEF		TONY ENGEL; AARON ROWE JEROMY WILSON (T)		BRANCH DIRECTOR		PAUL HOHN
SAFETY OFFICER		TROY CORN; JACK CATES		DIVISION/GROUP SUPERVISOR		ADAM ZIEGLER SAM STEINSHOUER (T)
5. Resources Assigned this Period						
Strike Team / Task Force / Resource Designator	LWD	Leader	Number Persons	Drop Off PT./Time	Pick Up PT./Time	
O-434 SOFR	09/10	DAN GARNER	1	ICP/0600	ICP/2000	
O-359 TFLD (T)	09/06	RYAN ROMERO	1	ICP/0600	ICP/2000	
O-376 TFLD	09/05	BENNY MENDOZA	1	ICP/0600	ICP/2000	
O-432 HEQB	09/09	DAVID MORRILL	1	ICP/0600	ICP/2000	
O-9001 HEQB (LOAN)	08/30	ANDY TOWNSEND	1	ICP/0600	ICP/2000	
O-250 FMOD FALLER MODULE	08/30	WADE GIGUERE	2	ICP/0600	ICP/2000	
C-70 HC2I UMA #1	08/31	NICK LACEY	18	ICP/0600	ICP/2000	
C-71 HC2 TORRES CONTRACTING CREW-11	09/01	EMILIO MELGAREJO	20	ICP/0600	ICP/2000	
C-81 HC2 LAVA RIVER FORESTRY 4	09/08		20	ICP/0600	ICP/2000	
C-9003 HC2I HIGHLANDS (LOAN)		SETH SCHERTENLEIB	19	ICP/0600	ICP/2000	
E- ENG5 DNR ENG (LOAN)			3	ICP/0600	ICP/2000	
E- ENG5 DNR ENG (LOAN)			3	ICP/0600	ICP/2000	
E- ENG5 DNR ENG (LOAN)			3	ICP/0600	ICP/2000	
E- ENG5 DNR ENG (LOAN)			3	ICP/0600	ICP/2000	
E- ENG5 DNR ENG (LOAN)			3	ICP/0600	ICP/2000	
8. Division/Group Communication Summary						
Function	Channel	RX Frequency N/W	RX Tone/NAC	TX Frequency N/W	TX Tone/NAC	Mode
COMMAND	1	170.0625	114.8	162.1750	114.8	A
COMMAND	2	170.3125	114.8	167.8375	114.8	A
COMMAND	3	170.4500	114.8	168.1000	114.8	A
TACTICAL	8	168.6000	114.8	168.6000	114.8	A
AIR TO GROUND	13	170.2625		170.2625		A
9. Prepared By (Resource Unit Leader)			Approved By (Planning Section Chief)		Date	Time
JILL JOHNSON			NATHAN JEFFRIES		08/26/2021	2000

Division/Group Assignment List (ICS 204 WF)
Controlled Unclassified Information//Basic

1. Incident Name:				3.		
WALKER CREEK & CHICKADEE CREEK				Branch: III	Division/Group O	
2. Operational Period: DAY/NIGHT						
Date/Time From: 08/27/2021 0600 FRI		Date/Time To: 08/28/2021 0800 SAT				
4. Operations Personnel						
OPERATIONS CHIEF		TONY ENGEL; AARON ROWE JEROMY WILSON (T)		BRANCH DIRECTOR		PAUL HOHN
SAFETY OFFICER		TROY CORN; JACK CATES		DIVISION/GROUP SUPERVISOR		ADAM ZIEGLER SAM STEINSHOUER (T)
5. Resources Assigned this Period						
Strike Team / Task Force / Resource Designator	LWD	Leader	Number Persons	Drop Off PT./Time	Pick Up PT./Time	
E-6C WTS2 TOLLEFSON CONSTR	09/06	EVAN BEVIER	1	ICP/0600	ICP/2000	
E-172 WTS2 SC RIVERS LMS, 93-102370	08/27	TIM SERIVER	1	ICP/0600	ICP/2000	
E-1C DOZ4 TIMBERLINE CONSTR	09/03	OWEN KRESEK	1	ICP/0600	ICP/2000	
E-26C DOZ3 DOUBLE A LOGGING	08/27	TYLER ACORD	1	ICP/0600	ICP/2000	
E-27C DOZ3 WILL LOGGING & CONSTR	08/31	GARY WILL JR	1	ICP/0600	ICP/2000	
E-24C EXCA DOUBLE A LOGGING	08/25	JERIMIAH BOARDWELL	1	ICP/0600	ICP/2000	
E-25C EXCA DOUBLE A LOGGING	08/27	TOM ACORD	1	ICP/0600	ICP/2000	
E-7C FEL1 DOUBLE A LOGGING	08/25	BRIAN ACORD	1	ICP/0600	ICP/2000	
E-22C SKD2 DOUBLE A LOGGING (R&R-BACK 8/28)	08/18	RYAN ANDERSON	1	ICP/0600	ICP/2000	
E-138 SKG1 SOFT TRACK ATTACK	09/04	JOSH COVEY	2	ICP/0600	ICP/2000	
E-197 SKG3 TUNK CREEK LLC	09/04	DYLAN GREEN	2	ICP/0600	ICP/2000	
E-203 MAST HAVILLAH LOGGIN	08/30	TIM KERSHNER	1	ICP/0600	ICP/2000	
O-313.61 EMPF	08/29	RONALD LOWRY	1	ICP/0600	ICP/2000	
8. Division/Group Communication Summary						
Function	Channel	RX Frequency N/W	RX Tone/NAC	TX Frequency N/W	TX Tone/NAC	Mode
COMMAND	1	170.0625	114.8	162.1750	114.8	A
COMMAND	2	170.3125	114.8	167.8375	114.8	A
COMMAND	3	170.4500	114.8	168.1000	114.8	A
TACTICAL	8	168.6000	114.8	168.6000	114.8	A
AIR TO GROUND	13	170.2625		170.2625		A
9. Prepared By (Resource Unit Leader)			Approved By (Planning Section Chief)		Date	Time
JILL JOHNSON			NATHAN JEFFRIES		08/26/2021	2000

Division/Group Assignment List (ICS 204 WF)

Controlled Unclassified Information//Basic

1. Incident Name:				3.			
WALKER CREEK & CHICKADEE CREEK				Branch:		Division/Group	
2. Operational Period: DAY/NIGHT				III		O	
Date/Time From: 08/27/2021 0600 FRI		Date/Time To: 08/28/2021 0800 SAT					
4. Operations Personnel							
OPERATIONS CHIEF		TONY ENGEL; AARON ROWE JEROMY WILSON (T)		BRANCH DIRECTOR		PAUL HOHN	
SAFETY OFFICER		TROY CORN; JACK CATES		DIVISION/GROUP SUPERVISOR		ADAM ZIEGLER SAM STEINSHOUER (T)	
6. Control Operations/Work Assignments:							
<p>TASK: Scout potential primary and alternate fireline locations from Katasa Road to DP 101. PURPOSE: Identify fireline placement. END STATE: Fireline with the highest probability of success is identified.</p> <p>TASK: Construct direct and indirect fireline from Katasa Road to DP 101. PURPOSE: Keep fire from impacting values at risk. END STATE: Fireline in the correct location with the right dimensions to contain the fire.</p> <p>TASK: Mop up fireline from DIV C/O to Katasa Road. PURPOSE: Keep fire inside fireline. END STATE: Flames and smoke are not a threat to escape fireline.</p>							
7. Special Instructions:							
Division breakout will be at breezeway.							
8. Division/Group Communication Summary							
Function	Channel	RX Frequency N/W	RX Tone/NAC	TX Frequency N/W	TX Tone/NAC	Mode	
COMMAND	1	170.0625	114.8	162.1750	114.8	A	
COMMAND	2	170.3125	114.8	167.8375	114.8	A	
COMMAND	3	170.4500	114.8	168.1000	114.8	A	
TACTICAL	8	168.6000	114.8	168.6000	114.8	A	
AIR TO GROUND	13	170.2625		170.2625		A	
9. Prepared By (Resource Unit Leader)			Approved By (Planning Section Chief)			Date	Time
JILL JOHNSON			NATHAN JEFFRIES			08/26/2021	2000

Division/Group Assignment List (ICS 204 WF)
Controlled Unclassified Information//Basic

1. Incident Name:				3.		
WALKER CREEK & CHICKADEE CREEK				Branch:	Division/Group NIGHT	
2. Operational Period: DAY/NIGHT						
Date/Time From: 08/27/2021 1800 FRI		Date/Time To: 08/28/2021 0800 SAT				
4. Operations Personnel						
OPERATIONS CHIEF		TONY ENGEL; AARON ROWE JEROMY WILSON (T)		BRANCH DIRECTOR		
SAFETY OFFICER		TROY CORN; JACK CATES		DIVISION/GROUP SUPERVISOR		DANIEL GLEASON SUSAN GREENLEAF (T)
5. Resources Assigned this Period						
Strike Team / Task Force / Resource Designator	LWD	Leader	Number Persons	Drop Off PT./Time	Pick Up PT./Time	
O-316 SOF2 (T)	08/29	DEAN KIEFER	1	ICP/1800	ICP/0800	
O-224 STEN	08/28	NATHAN DRAKE	1	ICP/1800	ICP/0800	
O-304 STEN (T)	08/31	PEDRO OLAGUE	1	ICP/1800	ICP/0800	
E-14 ENG5 J3 CONTRACTING	08/18	TAYLOR EASLEY	3	ICP/1800	ICP/0800	
E-19 ENG5 LL MEADOW WILDFIRE	09/03	DAMIAN RAMON	3	ICP/1800	ICP/0800	
E-58 ENG6 SPOKANE VALLEY FD - VB3	08/27	SHAWN HEATH	3	ICP/1800	ICP/0800	
E-116 ENG6 TORCH FIRE AND SECURITY	09/08	TRINITY KRIVANEC	3	ICP/1800	ICP/0800	
E-115 ENG3 OUTBACK FIREFIGHTING	08/25	SEAN WEST	3	ICP/1800	ICP/0800	
E-122 ENG6 SMITHFIELD FD E640	09/01	DUSTIN HOOTON	2	ICP/1800	ICP/0800	
E-167 ENG3 BENTON FD.1 ENG 1135	08/28	BROCK LONG	3	ICP/1800	ICP/0800	
E-168 ENG5 BRUSH 1-2 WEST THURSTON	08/28	BLAKE KALEIWAHEA	2	ICP/1800	ICP/0800	
E-170 ENG3 EAST OLYMPIA FIRE DISTRICT 6	08/28	DEVIN PARVINEN	3	ICP/1800	ICP/0800	
E-171 ENG6 THURSTON CO BR 95	08/28	HEATH HODGE	2	ICP/1800	ICP/0800	
E-156 WTS2 H & H ENTERPRISES	08/27	MARK ANDERSON	1	ICP/1800	ICP/0800	
E-92 DOZ2 PRICE EXCAVATION LLC	09/03	JAMES PRICE	2	ICP/1800	ICP/0800	
E-114 SKDS SOFT TRACK ATTACK	08/30	STEVE BONNER	2	ICP/1800	ICP/0800	
8. Division/Group Communication Summary						
Function	Channel	RX Frequency N/W	RX Tone/NAC	TX Frequency N/W	TX Tone/NAC	Mode
COMMAND	1	170.0625	114.8	162.1750	114.8	A
COMMAND	2	170.3125	114.8	167.8375	114.8	A
COMMAND	3	170.4500	114.8	168.1000	114.8	A
TACTICAL	10	166.7750	114.8	166.7750	114.8	A
AIR TO GROUND	13	170.2625		170.2625		A
AIR TO GROUND	15	168.1375		168.1375		A
9. Prepared By (Resource Unit Leader)		Approved By (Planning Section Chief)		Date	Time	
JILL JOHNSON		NATHAN JEFFRIES		08/26/2021	2000	

Division/Group Assignment List (ICS 204 WF)
Controlled Unclassified Information//Basic

1. Incident Name:		3.				
WALKER CREEK & CHICKADEE CREEK		Branch:		Division/Group		
2. Operational Period:		NIGHT				
DAY/NIGHT						
Date/Time From: 08/27/2021 1800 FRI		Date/Time To: 08/28/2021 0800 SAT				
4. Operations Personnel						
OPERATIONS CHIEF		TONY ENGEL; AARON ROWE JEROMY WILSON (T)		BRANCH DIRECTOR		
SAFETY OFFICER		TROY CORN; JACK CATES		DIVISION/GROUP SUPERVISOR		DANIEL GLEASON SUSAN GREENLEAF (T)
5. Resources Assigned this Period						
Strike Team / Task Force / Resource Designator	LWD	Leader	Number Persons	Drop Off PT./Time	Pick Up PT./Time	
6. Control Operations/Work Assignments:						
TASK: Patrol and mop up areas that threaten values at risk. PURPOSE: Protect values at risk. END STATE: Fire does not pose a threat to any critical values within or adjacent to the division.						
7. Special Instructions:						
Division breakout will be at breezeway.						
8. Division/Group Communication Summary						
Function	Channel	RX Frequency N/W	RX Tone/NAC	TX Frequency N/W	TX Tone/NAC	Mode
COMMAND	1	170.0625	114.8	162.1750	114.8	A
COMMAND	2	170.3125	114.8	167.8375	114.8	A
COMMAND	3	170.4500	114.8	168.1000	114.8	A
TACTICAL	10	166.7750	114.8	166.7750	114.8	A
AIR TO GROUND	13	170.2625		170.2625		A
AIR TO GROUND	15	168.1375		168.1375		A
9. Prepared By (Resource Unit Leader)		Approved By (Planning Section Chief)		Date	Time	
JILL JOHNSON		NATHAN JEFFRIES		08/26/2021	2000	

AIR OPERATIONS SUMMARY

Controlled Unclassified Information//Basic

PREPARED BY: Greg Reser AOB (t)

PREPARED DATE/TIME: 8/26/2021 1900

1. INCIDENT NAME: Walker Cr. /Chickadee Cr.		2. OPERATIONAL PERIOD DATE: 8/27/21 START TIME: 0800 END TIME: 2000 SUNRISE: 0607 SUNSET: 1951 Pumpkin 2021			
3. REMARKS (Safety Notes, Hazards, Air Operations Special Equipment, etc.):				4. Ready Alert aircraft: Order ALS air ambulance (Lifeflight) through NEWICC Dispatch. Closest ALS helicopters are out of Brewster, WA with a 25 min flight time to the Walker fire. <u>Special remarks:</u> Wenatchee Short Haul 3JR at Lake Chelan, WA Airport. Response time roughly 45min to incident. Order thru AOB. National Guard UH-60's with hoist, litter and NVG capability are available at Spokane and Yakima; Order thru AOB. Response time roughly 1 hour to incident. Review Military Training Route activity and status each morning prior to missions. <u>Aviation Support Equipment:</u> WTS2 E-227 @ Omak Helibase Helibase Support Trailer E-36 @ Omak Helibase <u>Email cost to:</u> WalkerSpur.Aviation@gmail.com	
5. Helibase location Omak (OMK) 48-27.864617N 119-31.083250W Elev: 1,304' Base Phone: 360-489-7654 Unicom: OMK: 122.8 Tonasket W01: 122.9		6. TFR information Walker 1/9445 9NM SFC-9500FT Chickadee 1/9449 7NM SFC-9500FT	7. FIXED WING		SEATS/Fireboss: Available out of Omak. Order through NEWICC. ATGS Platform: Order as needed through NEWICC.
8. PERSONNEL		Phone	9. FREQUENCIES	FM	AM
AOBD – Mike Davis		509-699-9350	A/G Walker Pri	168.1375	
AOBD (t) - Greg Reser		307-350-2202	A/G Walker Sec	169.5625	
HEBM – Eric Bader		303-704-1164	A/G Chickadee Pri	170.2625	
			TFR 1/9445 Walker		118.125
			A/A Walker Rotor		126.3500
			TFR 1/9449 Chickadee		118.775
NE Washington Dispatch (NEWICC)		509-685-6900	A/A Chickadee Rotor		126.6250
			A/G Ignitions Discreet	167.8375	
Colville UAO Ben Renfro		541-589-0452	DNR Flight Follow	151.3475 Tx(136.5)	
			Air Guard	168.6250 Tx(110.9)	

10. Helicopters	TY	MAKE/MODEL	BASE	START	AVAIL	REMARKS
N24CK (A-183) / Gelhausen	1	S-61A	OMK	0800	0830	EU / Tanked
N7CU (A-174) / Hogue	1	CH-47D	OMK	0800	0830	EU / Bucket
N58HA (A-199) / Olson	2	UH-1	OMK	0800	0830	CWN / Restricted
N12HX (A-204) / Lookingback	3	Bell 407	OMK	0800	0830	EU / HMGB +9

Mission Requests:

Air Attack: Requested through NEWICC as needed.

Lead Plane/Airtankers: Requested through NEWICC as needed.

Helicopters: Requested through Omak Helibase.

Approved By: Mike Davis AOB

INCIDENT RADIO COMMUNICATIONS PLAN (ICS 205)

Controlled Unclassified Information//Basic

1. Incident Name:	2. Date/Time Prepared:	3. Operational Period: DAY/NIGHT	
WALKER CREEK & CHICKADEE CREEK	Date: 08/26/2021 Time: 2000	Date/Time From: 08/27/2021 0600 FRI	Date/Time To: 08/28/2021 0800 SAT

4. Basic Radio Channel Use:

Zone Group	Ch #	Function	Channel Name/Trunked Radio System Talkgroup	Assignment	RX Freq	RX Tone/NAC	TX Freq	TX Tone/NAC	Mode (A,D, or M)	Remarks
	1	COMMAND	CMD1	ALL RESOURCES	170.0625	114.8	162.1750	114.8	A	LINKED TO CMD 2 & CMD 3
	2	COMMAND	CMD2	ALL RESOURCES	170.3125	114.8	167.8375	114.8	A	LINKED TO CMD1 & CMD 3
	3	COMMAND	CMD3	ALL RESOURCES	170.4500	114.8	168.1000	114.8	A	LINKED TO CMD1 & CMD2
	5	COMMAND	DNR TON	ALL RESOURCES	159.3675	118.8	151.2575	156.7	A	DNR TONASKET DISPATCH
	6	TACTICAL	TAC 6	DIV A	168.0500	114.8	168.0500	114.8	A	NIFC TAC
	7	TACTICAL	TAC 7	DIV F/K	168.2000	114.8	168.2000	114.8	A	NIFC TAC
	8	TACTICAL	TAC 8	DIV H/O	168.6000	114.8	168.6000	114.8	A	NIFC TAC
	9	TACTICAL	TAC 9	DIV T	166.7250	114.8	166.7250	114.8	A	NIFC TAC
	10	TACTICAL	TAC 10	DIV C/NIGHT	166.7750	114.8	166.7750	114.8	A	NIFC TAC
	11	TACTICAL	TAC 11	DIV Q	168.2500	114.8	168.2500	114.8	A	NIFC TAC
	12	TACTICAL	RED NET	ALL RESOURCES	153.8300		153.8300		A	EMS AMBU/AIR UNITS
	13	AIR TO GROUND	A/G CHICK	A/G CHICKADEE	170.2625		170.2625		A	NIFC A/G
	14	AIR TO GROUND	A/G SECONDARY	A/G SECONDARY	169.5625		169.5625		A	NIFC A/G
	15	AIR TO GROUND	A/G WALKER	A/G WALKER	168.1375		168.1375		A	NIFC A/G
	16	AIR GUARD	AIRGUARD	ALL RESOURCES	168.6250		168.6250	110.9	A	EMERGENCY USE ONLY

5. Special Instructions:
 LAST CLOSE: WALKER081721. To check version on your radio: DPH: Press and hold the # key; KNG/BKR: Look at your display or press your ZONE key.

6. Prepared By (Communications Unit Leader)	Name: MISSY PARKER	Signature: <i>Missy Parker</i>
ICS 205	IAP Page	Date/Time: 08/26/2021 2000

WALKER CREEK/CHICKADEE CREEK/SPUR FIRE DEMOB LIST

Friday 08/27/21

DEMOB INSTRUCTIONS

Paperless and electronic demobilization will be used to the extent possible for all resources. **PLEASE LOOK closely at the Fire Name and Resource Number.** All finance documents will be emailed and signed virtually. Ensure all Final CTR's and Shift Tickets have been submitted to Finance the night before your demob day.

DEMOB STEPS

(Must Be Done In Order)

1. If you have any items checked out by Supply and Communications, proceed to those areas to turn in equipment. If you don't have any items checked out, proceed to NEXT STEP.
2. If you were inspected upon arrival or need a No Claims/No Comp receipt, check out with Ground Support. If this does not apply, proceed to NEXT STEP.
3. Call Finance at 509-423-6011 to finalize paperwork.
4. Call DMOB at 206-473-1425 to complete the process to be released.

*** WALKER CREEK ***

CREWS

C-30	0600	HC2	WILLAMETTE VALLEY
------	------	-----	-------------------

EQUIPMENT

E-136	0615	WTS3	OVERWATCH ENTERPRISE
E-177	0630	WTS1	DOUBLE A LOGGING
E-58	1000	ENG6	SPOKANE VALLEY

OVERHEAD

O-200	0600	DIVS	RATCLIFFE, EVAN
O-193	0615	FMOD	BROTHERS, STEPHEN
O-190	0615	FMOD	MATLOCK FALLER
O-203	0630	TFLD	AVICHOUSER, ROSS
O-119	0630	TFLD	CORK, VAUGHN
O-51	0700	INCM	REESE, STEPHEN
O-334	1600	HECM	HUGHES, COLTON
O-158	1600	EMTF	FIRELINE MEDIC

NOTE: THERE WILL BE NO ADDITIONAL CREW SWAPS MOVING FORWARD AS THE EQUIPMENT WILL JUST TIME OUT WITH CURRENT OPERATOR. EXTENSIONS WILL BE ALLOWED WITH THE APPROVAL OF OPERATIONS.





Human Resource Message



Walker Creek and Chickadee Creek Fires, August 27, 2021

PATIENCE: is the word of the day and maybe the word of the week!

NW Team 12 is working diligently to provide full support to all fire personnel. Please be patience with us and with each other as we maneuver through these next few days. But while we are getting things in place for that support, please keep in mind the Incident Objectives are the same. Our focus is on the fire.

We will follow the CDC/PNWCG Best Management Practices, to minimize public and responder exposure to transmission or infection from COVID-19. We ask everyone to wear masks, social distance, and wash and sanitize your hands. Let us all do our part to ensure a safe working environment.

We are in the process of establishing a new Incident Command Post (ICP) at the Omak Stampede Grounds. We are doing this in support of the health and well being of the team and all fire personnel. Meetings and briefings are virtual. Follow the link on the front page of the Incident Action Plan (IAP) to listen in on the briefings.

Often, the general public will ask fire personnel questions about the fire. For the most up to date fire information, please have folks contact our Public Information Officers (PIOs) at: 509-557-7257.

For questions related to issues, concerns, or if you just need to find out who to talk to, contact Human Resources at 602-571-9327. smanezes@blm.gov.

Quote for the day:

“Smile, it will confuse them.”

-Genevieve K.



Susie Manezes, NW-Team 12- Human Resource Specialist (HRSP)
Contact Number: 602-571-9327. smanezes@blm.gov

Walker Creek Fire
Finance

Chickadee Creek
Fire Finance



Finance Message

2021.walkercreek.finance@firenet.gov

2021.chickadeecreek.finance@firenet.gov

(509) 423-6011 FSC2 (T) Christina

(509) 433-1115 TIME Unit Carol

(509) 531-7418 Equipment Mark

(509) 675-5821 ICPI Rob

Finance is all virtual. We will be happy to take all your paperwork, CTRs and Shift tickets all by email or text.

If you have questions, please call one of the above numbers.

Make sure that your CTR and Shift Ticket have the correct fire that you are working on.

Incident Maps

How to Download Maps in Avenza

If you're cell signal is poor you may need to connect to a wifi to download maps. However sometimes being connected to a wifi can slow map downloads. You'll just have to find out what works best.

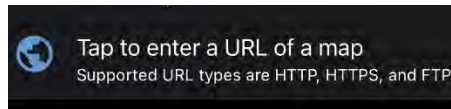
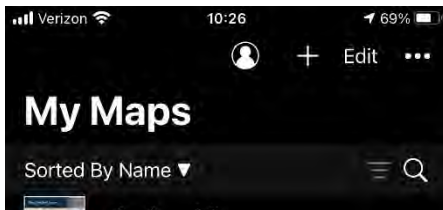
Method 1: From a browser - If you have a good cell or wifi signal

1. Tap on the desired map link and wait for the preview. *If it fails to load, use method 2 instead*
2. Tap the 'send to' icon (square with up arrow)
3. Choose the Avenza app



Method 2: From Avenza direct – if you don't have a good cell or wifi signal

1. Tap and hold on the desired map link, then choose 'copy' to copy the direct URL to the map
2. Launch the Avenza app
3. When not in any map... Tap the + (plus) icon at the top of the screen
4. Choose the load from URL option (last choice)
5. Paste the direct URL to the map
6. Tap 'Done' ; the map will begin downloading



How to Send Map Updates to the Situation Unit

1. From within the map in Avenza, click the pin with three lines near the lower-right corner.
2. *iPhone:* In the lower right, click the square with up arrow. From the pop-up menu, choose Export to Others.
Android: In the lower right, click the circle with three lines. Click the pop-up circle with up arrow.
3. Set these options:
 - a. Filename – leave alone
 - b. Export Format – choose SHP, GPX or KML
 - c. Data – all features
 - d. Image size – no image
4. Click the Export button in the upper-right corner.
5. When the export is ready, choose your Mail application.
6. Email the update to 2021.walker creek.situation@firenet.gov for the Walker Creek Fire map updates or 2021.chickadee creek.situation@firenet.gov for the Chickadee Fire map updates.
7. If you have questions, call or text the Situation Unit at 360-584-3373.
8. Your email needs to include an explanation of the data and a contact phone number.

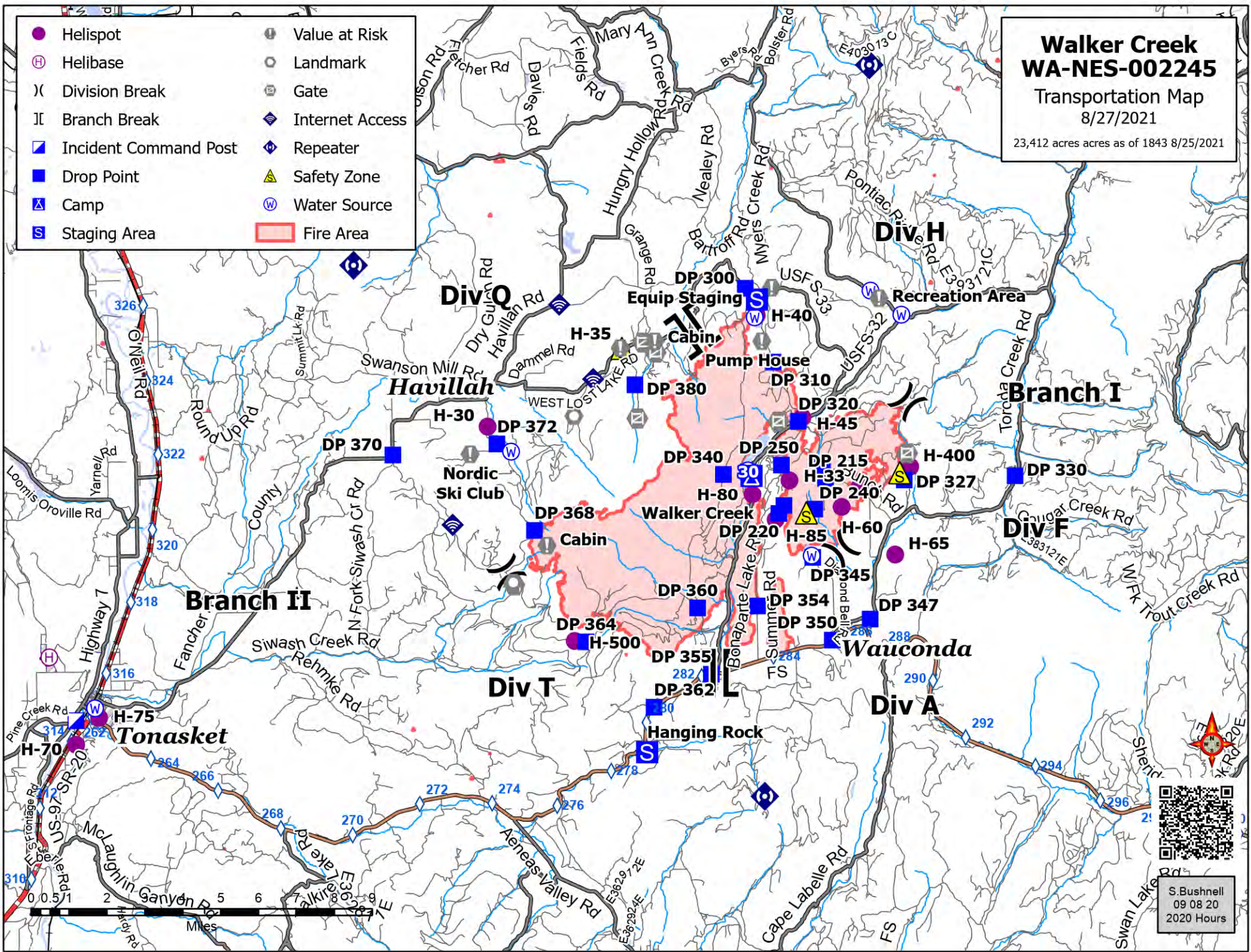
If all else fails draw your map update on your paper map, take a picture and it attach that to an email to the above addresses.

Walker Creek WA-NES-002245

Transportation Map
8/27/2021

23,412 acres as of 1843 8/25/2021

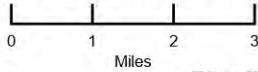
- | | |
|-------------------------|-------------------|
| ● Helispot | ⚠ Value at Risk |
| ⊕ Helibase | ⊙ Landmark |
| ⌋ Division Break | ⊠ Gate |
| ⌋ Branch Break | 📶 Internet Access |
| 🏠 Incident Command Post | 📶 Repeater |
| 📍 Drop Point | ⚠ Safety Zone |
| 🏕 Camp | 💧 Water Source |
| 📦 Staging Area | 🔴 Fire Area |



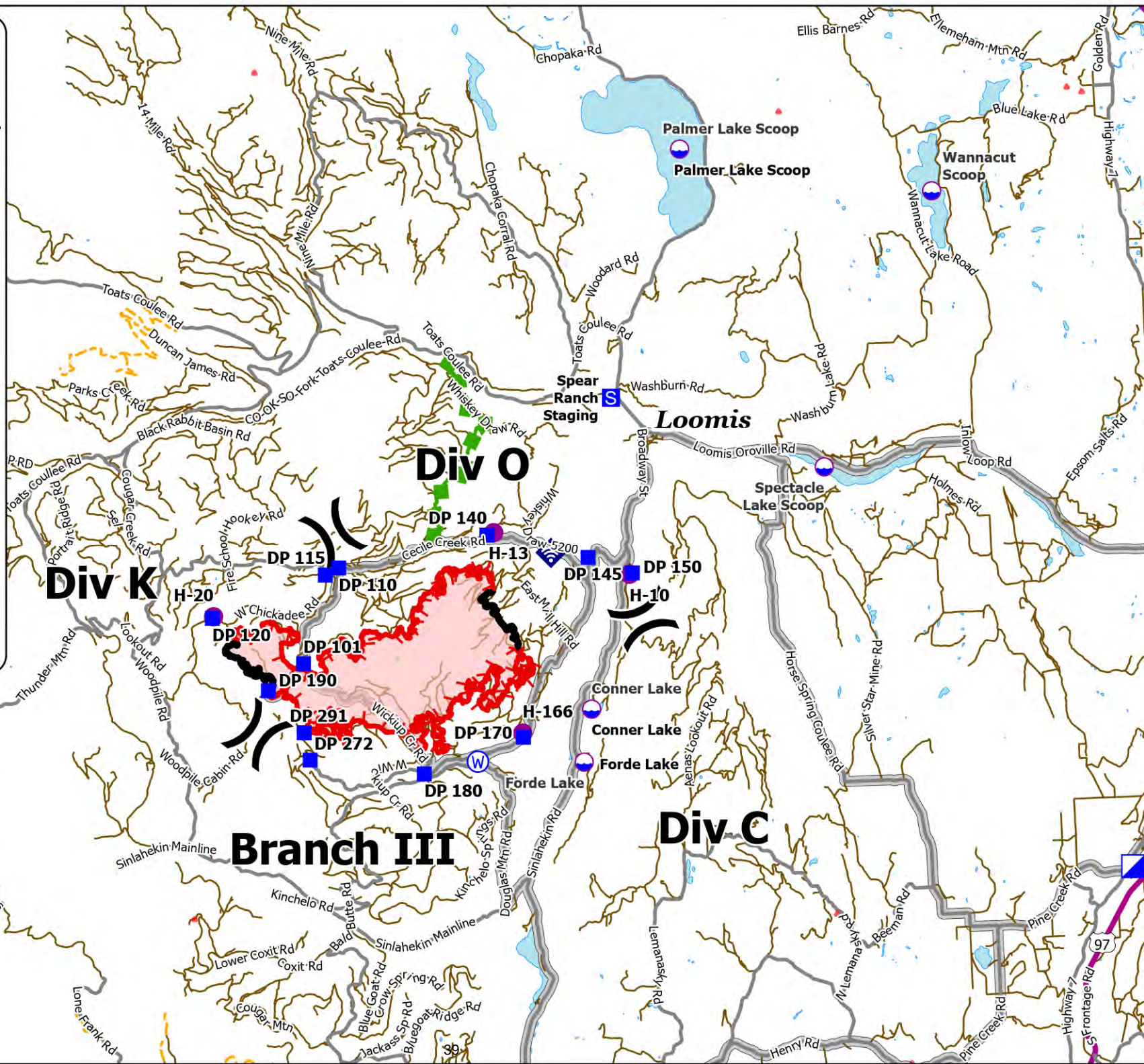
S. Bushnell
09 08 20
2020 Hours

Transportation
Chickadee Creek
 WA-NES-002310
 8/27/2021

5,199 acres as of 1945 8/24/2021 via IR



- Dip Site
- Helispot
- Division Break
- Drop Point
- Staging Area
- Internet Access
- Water Source
- Incident Command Post
- Wildfire Daily Fire Perimeter
- Primary Highway
- Secondary Highway
- Light-Duty Road
- Unimproved Road
- Road Closed
- Access Routes
- Escape Route
- Fire Edge
- Contained Line



WALKER CREEK/CHICKADEE FIRE COVID-19 MITIGATIONS

Supervisors are required to go over this list each morning with assigned resources- report any symptoms below to medical unit.

In the last 24 hours have you experienced:

- Cough more than expected?
- Shortness of breath or difficulty breathing?
- Fever? Chills?
- Muscle pain, outside your normal for firefighting?
- Sore throat?
- New loss of taste or smell?
- Fatigue, outside your normal for firefighting?
- Headache, outside your normal for firefighting?
- Congestion or runny nose, outside your normal for firefighting?
- Nausea or vomiting
- Diarrhea

** Take temperature with no-touch thermometer, if available **

- **All personnel are required to wear a mask in fire camp regardless of vaccination status, unless outdoors and able to maintain at least 6ft of distance at all times, alone in an enclosed space or actively engaged in firefighting on the fireline.**
- **Listen to radio briefings remotely.**
- **Observe 6ft Distancing whenever possible.**
- **Observe “Module as One” practices – only close contact with crew (engine, handcrew, etc.) that you live and work with all summer. Observe distancing and masking around everyone else. Do not co-mingle with other crews or “modules” in camp or on the line.**
- **Send crew representatives to pick up meals - masks must be worn in food lines.**
- **Wash hands frequently and disinfect high-traffic areas on a regular basis.**
- **Limit close contact between firefighters and the public to prevent exposure and spread.**

UNIT LOG		1. Incident Name		2. Date Prepared		3. Time Prepared	
4. Unit Name/Designators		5. Unit Leader (Name and Position)		6. Operational Period			
7. Personnel Roster Assigned							
Name		ICS Position		Home Base			
8. Activity Log							
Time		Major Events					
9. Prepared by (Name and Position)							



EMERGENCY PLAN INCIDENT WITHIN AN INCIDENT

ON SCENE INCIDENT COMMANDER

In the event of an accident or medical incident of any size, your primary responsibility is to ENSURE that the victim(s) receive prompt and effective Triage, Treatment, Extrication and Transport.

- **ENSURE THE MEDICAL INCIDENT REPORT IN THE INCIDENT ACTION PLAN IS BEING USED AND FOLLOWED- *IF DETERMINED TO BE A GREEN, DO NOT DECLARE EMERGENCY TRAFFIC AND ONLY COMPLETE LINE 1-4 ON MIR*.**
- Conduct size-up of the incident nature of accident, number type of resources involved, latitude and longitude location (DD°MMM.MM format): notify incident communications center and supervisor, request assistance as needed.
- Order and coordinate medical and support response to the accident.
- Evaluate special needs (law enforcement, haz mat, etc.).
- Clear the command frequency if medical emergency, coordinate with incident communications and air attack for air medical transportation needs.
- Preserve and photograph the scene for accident investigation.
- Remain aware of surroundings and the status of the main incident (delegate personnel to monitor the main fire) to ensure safety of medical treatment personnel.
- Until relieved, supervise and manage all personnel involved at the incident scene.

MEDICAL PLAN (ICS 206 WF)

20 Incident/Project Name				1. Operational Period							
Walker Creek Fire				August 27-28, 2021 0600-0800							
2. Ambulance Services											
Name		Complete Address		Phone		Advanced Life Support (ALS) Yes No					
Lifeline Ambulance		912 Koala Ave Omak, WA 98841		911 - Dispatch 509-663-8091		X					
3. Air Ambulance Services											
Name		Phone		Type of Aircraft & Capability							
Life Flight Network		800-232-0911		Bell 407 - Brewster							
Airlift Northwest		800-426-2430 or 911		Rotor in Wenatchee							
4. Hospitals											
Name Complete Address		Coordinate Standard Degrees Decimal Minutes DD° MM.MMM' N - Lat DD° MM.MMM' W - Long		Travel Time From Bonaparte Air Gnd		Phone		Helipad Yes No		Level of Care Facility	
North Valley Hospital 203 S Western Ave Tonasket, WA 98855		Lat: 48°42.4549' N		13 min 38 min		509-486-2151		X		Level 4 Trauma	
		Long: 119°26.3267' W									
Mid-Valley Hospital 912 Koala Ave Omak, WA 98841		Lat: 48°23.8336' N		24 Min 59 min		509-826-1760		X		Level 4 Trauma	
		Long: 119°32.8758' W									
Confluence Health Hospital (Central Washington Hospital) 1201 S Miller St. Wenatchee, WA 98801		Lat: 47°24.4340' N		1 Hr 12 min 2 Hr 48 min		509-662-1511		X		Level 2 Trauma	
		Long: 120°19.3664' W									
Harborview Medical 325 9th Ave Seattle, WA 98104		Lat: 47°36.1897' N		2 Hr 22 min 5 Hr		541-222-6929		X		Level 1 Trauma Burn Center	
		Long: 122°19.4759' W									
5. Division Branch Group		Capability				Personnel					
Div A						Barwell EMTF Stevens Sheriff Ambulance (Ambo 1) Brittian					
Div F						Byrd EMPF					
Div H						Sewell EMPF					
Div Q						Bridges EMPF					
Div T						Marin EMPF					
Night Shift						Use Available Resources					
6. Prepared By (Medical Unit Leader)				7. Date/Time		8. Reviewed By (Safety Officer)			9. Date/Time		
Lee Venning (T), Diana Braun <i>Diana Braun</i>				08/26/2021 1800		Jack Cates <i>Jack Cates</i>			08/26/2021 1800		

MEDICAL PLAN (ICS 206 WF)

20 Incident/Project Name		1. Operational Period				
<h2>Chickadee Creek Fire</h2>		August 27-28, 2021 0600-0800				
2. Ambulance Services						
Name	Complete Address	Phone	Advanced Life Support (ALS) Yes No			
Lifeline Ambulance	912 Koala Ave Omak, WA 98841	911 - Dispatch 509-663-8091	x			
3. Air Ambulance Services						
Name	Phone	Type of Aircraft & Capability				
Life Flight Network	800-232-0911	Bell 407 - Brewster				
Airlift Northwest	800-426-2430 or 911	Rotor in Wenatchee				
4. Hospitals						
Name Complete Address	Coordinate Standard Degrees Decimal Minutes DD° MM.MMM' N - Lat DD° MM.MMM' W - Long	Travel Time From Loomis Air Gnd		Phone	Helipad Yes No	Level of Care Facility
North Valley Hospital 203 S Western Ave Tonasket, WA 98855	Lat: 48°42.4549' N	8 min	22 min	509-486-2151	X	Level 4 Trauma
	Long: 119°26.3267' W					
Mid-Valley Hospital 912 Koala Ave Omak, WA 98841	Lat: 48°23.8336' N	20 Min	46 min	509-826-1760	X	Level 4 Trauma
	Long: 119°32.8758' W					
Confluence Health Hospital (Central Washington Hospital) 1201 S Miller St. Wenatchee, WA 98801	Lat: 47°24.4340' N	68 min	2 Hr 35 min	509-662-1511	X	Level 2 Trauma
	Long: 120°19.3664' W					
Harborview Medical 325 9 th Ave Seattle, WA 98104	Lat: 47°36.1897' N	1Hr 38 min	4 Hr 50 min	541-222-6929	X	Level 1 Trauma Burn Center
	Long: 122°19.4759' W					
5. Division Branch Group	Capability	Personnel				
Div C	Landrum EMTF Smith EMPF (UTV) Pen Orville Ambulance (Ambo 2) Hastings					
Div K	Satcher EMTF					
Div O	Lowry EMPF					
Night Shift	Use Medical Resources					
6. Prepared By (Medical Unit Leader)		7. Date/Time	8. Reviewed By (Safety Officer)		9. Date/Time	
Lee Venning (T), Diana Braun <i>Diana Braun</i>		08/26/2021 1800	Jack Cates <i>Jack Cates</i>		08/26/2021 1800	

MEDICAL PLAN (ICS 206 WF)

Controlled Unclassified Information//Basic

Medical Incident Report

FOR A NON-EMERGENCY INCIDENT, WORK THROUGH CHAIN OF COMMAND TO REPORT AND TRANSPORT INJURED PERSONNEL AS NECESSARY.

FOR A MEDICAL EMERGENCY: IDENTIFY ON SCENE INCIDENT COMMANDER BY NAME AND POSITION AND ANNOUNCE "MEDICAL EMERGENCY" TO INITIATE RESPONSE FROM IMT COMMUNICATIONS/DISPATCH.

Use the following items to communicate situation to communications/dispatch.

1. CONTACT COMMUNICATIONS / DISPATCH (**Verify correct frequency prior to starting report**)

Ex: "Communications, Div. Alpha. Stand-by for Emergency Traffic."

2. INCIDENT STATUS: *Provide incident summary (including number of patients) and command structure.*

Ex: "Communications, I have a Red priority patient, unconscious, struck by a falling tree. Requesting air ambulance to Forest Road 1 at (Lat./Long.) This will be the Trout Meadow Medical, IC is TFLD Jones. EMT Smith is providing medical care."

Severity of Emergency / Transport Priority	<input type="checkbox"/> RED / PRIORITY 1 Life or limb threatening injury or illness. Evacuation need is IMMEDIATE <i>Ex: Unconscious, difficulty breathing, bleeding severely, 2° – 3° burns more than 4 palm sizes, heat stroke, disoriented.</i> <input type="checkbox"/> YELLOW / PRIORITY 2 Serious Injury or illness. Evacuation may be DELAYED if necessary. <i>Ex: Significant trauma, unable to walk, 2° – 3° burns not more than 1-3 palm sizes.</i> <input type="checkbox"/> GREEN / PRIORITY 3 Minor Injury or illness. Non-Emergency transport <i>Ex: Sprains, strains, minor heat-related illness.</i>	
Nature of Injury or Illness & Mechanism of Injury		<i>Brief Summary of Injury or Illness (Ex: Unconscious, Struck by Falling Tree)</i>
Transport Request		<i>Air Ambulance / Short Haul/Hoist Ground Ambulance / Other</i>
Patient Location		<i>Descriptive Location & Lat. / Long. (WGS84)</i>
Incident Name		<i>Geographic Name + "Medical" (Ex: Trout Meadow Medical)</i>
On-Scene Incident Commander		<i>Name of on-scene IC of Incident within an Incident (Ex: TFLD Jones)</i>
Patient Care		<i>Name of Care Provider (Ex: EMT Smith)</i>

3. INITIAL PATIENT ASSESSMENT: *Complete this section for each patient as applicable (start with the most severe patient)*

Patient Assessment: See IRPG page 106

Treatment:

4. TRANSPORT PLAN:

Evacuation Location (if different): *(Descriptive Location (drop point, intersection, etc.) or Lat. / Long.)* Patient's ETA to Evacuation Location:

Helispot / Extraction Site Size and Hazards:

5. ADDITIONAL RESOURCES / EQUIPMENT NEEDS:

Example: Paramedic/EMT, Crews, Immobilization Devices, AED, Oxygen, Trauma Bag, IV/Fluid(s), Splints, Rope rescue, Wheeled litter, HAZMAT, Extrication

6. COMMUNICATIONS: Identify State Air/Ground EMS Frequencies and Hospital Contacts as applicable

Function	Channel Name/Number	Receive (RX)	Tone/NAC *	Transmit (TX)	Tone/NAC *
COMMAND					
AIR-TO-GRND					
TACTICAL					

7. CONTINGENCY: **Considerations:** *If primary options fail, what actions can be implemented in conjunction with primary evacuation method? Be thinking ahead.*

8. ADDITIONAL INFORMATION: *Updates/Changes, etc.*

REMEMBER: Confirm ETA's of resources ordered. Act according to your level of training. Be Alert. Keep Calm. Think Clearly. Act Decisively.

Controlled Unclassified Information//Basic