

INCIDENT ACTION PLAN

Walker Creek / Chickadee Creek



August 28-29, 2021
Dayshift 0600-1800
Nightshift 1800-0600



Walker Creek Fire
WA-NES-002245
PNN7RL (1522)
WA state code: 221KPI

Chickadee Creek Fire
WA-NES-002310
PNN7WA (1522)
221-JFZ

QR Code for:
Virtual Check-in
Time
Maps
IAP
COVID19 Self Test



BRIEFING Phone
(audio only)
[+1 929-336-2435](tel:+19293362435), [452803978#](tel:+1929336452803978)
Phone Conference
ID: 452 803 978#


This page intentionally left blank.



INCIDENT OBJECTIVES (ICS 202)

1. Incident Name:	2. Operational Period: DAY/NIGHT	
WALKER CREEK & CHICKADEE CREEK	Date/Time From: 08/28/2021 0600 SAT	Date/Time To: 08/29/2021 0600 SUN
3. Objective(s):		
<ul style="list-style-type: none"> • Ensure firefighter, aviator and public safety is the priority in all fire management activities by utilizing a risk-based approach to decision making. • Implement a full suppression strategy utilizing direct and indirect tactics having a high probability of success while aligning with values at risk and remaining fiscally responsible. • Develop and maintain relationships with BLM, WA DNR, USFS, Okanogan County, local agencies, cooperators, stakeholders, and the public while providing consistent and timely public information. • Utilize appropriate fire strategies to minimize fire impacts on private properties, recreation trails, infrastructure, and natural & cultural resources including timber, grazing land, spotted owl and Canadian Lynx habitat, white bark pine, and cultural, historic and heritage sites. • Follow CDC/PNWCG Best Management Practices to minimize public and responder exposure to transmission or infection from COVID-19. 		
4. Operational Period Command Emphasis:		
Secure and mop-up direct control lines. Improve indirect control lines, make preparations for firing operations and implement where needed.		
General Situational Awareness:		
Maintain situational awareness, identify hazards and develop mitigations for them.		
5. Site Safety Plan Required? Yes <input type="checkbox"/> No <input checked="" type="checkbox"/>		
Approved Site Safety Plan(s) Located		
6. Incident Action Plan (the items checked below are included in this Incident Action Plan):		
<input checked="" type="checkbox"/> ICS 202 <input checked="" type="checkbox"/> ICS 203 <input checked="" type="checkbox"/> ICS 204 <input checked="" type="checkbox"/> ICS 205 <input type="checkbox"/> ICS 205A <input checked="" type="checkbox"/> ICS 206	<input type="checkbox"/> ICS 207 <input type="checkbox"/> ICS 208 <input checked="" type="checkbox"/> ICS 220 <input checked="" type="checkbox"/> Map/Chart <input checked="" type="checkbox"/> Weather Forecast/Tides/Currents	Other Attachments: <input checked="" type="checkbox"/> HR MESSAGE <input checked="" type="checkbox"/> COVID SCREENING <input type="checkbox"/> _____ <input type="checkbox"/> _____
7. Prepared by: MARGE HUTCHINSON Position/Title: PSC2	Signature: <i>Marge Hutchinson</i>	
8. Approved by Incident Commander:	Name: JEFF DIMKE	Signature: <i>Jeff Dimke</i>
ICS 202	IAP Page	Date/Time: 08/27/2021 2000

ORGANIZATION ASSIGNMENT LIST (ICS 203)

1. Incident Name:		2. Operational Period: DAY/NIGHT	
WALKER CREEK & CHICKADEE CREEK		Date/Time From: 08/28/2021 0600 SAT	Date/Time To: 08/29/2021 0600 SUN
3. Incident Commander(s) and Command Staff:		FOOD UNIT	RUSS HOVEY
IC/UC	JEFF DIMKE	SECURITY UNIT	
DEPUTY	BOBBY SHINDELAR	7. Operations Section:	
SAFETY OFFICER	TROY CORN JACK CATES (VIRTUAL)	PLANNING OPS	AARON ROWE
INFORMATION OFFICER	MARY BEAN ROLAND EMETAZ	OPS SECTION CHIEF	TONY ENGEL JEROMY WILSON (T)
LIAISON OFFICER	SCOTT CRAWFORD	BRANCH DIRECTOR	CHRIS ZOLLER
HEALTH LIAISON	LIV STECKER	BRANCH DIRECTOR	JERRAN FLINDERS
HUMAN RESOURCE SPECIALIST	SUSIE MANEZES	BRANCH DIRECTOR	BEAU KIDD
4. Agency/Organization Representative(s):			
Agency/Organization	Name	DIVISION/GROUP	A TY GRIPP
		DIVISION/GROUP	F CODY ACORD SCOTT NIELSEN (T)
DNR	KEN MCNAMEE (ADMIN) BRETT WALKER (AREP)	DIVISION/GROUP	H MATT KENNEDY
USFS	RODNEY SMOLDEN (ADMIN) TRAVIS FLETCHER (AREP)	DIVISION/GROUP	Q MICHAEL GOOD JAMES DICKINSON (T)
BLM	CURTIS BRYANT (ADMIN) TIM MURPHREE (AREP)	DIVISION/GROUP	T MICHAEL JACKSON
		DIVISION/GROUP	C BOB HINDS
OKANOGAN COUNTY OES	MAURICE GOODALL	DIVISION/GROUP	K CHET DIERINGER
		DIVISION/GROUP	O ADAM ZIEGLER SAM STEINSHOUER (T)
5. Planning Section:		DIVISION/GROUP	NIGHT DANIEL GLEASON SUSAN GREENLEAF (T)
CHIEF	MARGE HUTCHINSON		
DEPUTY	HOWARD JOHNSON (VIRTUAL)		
RESOURCES UNIT	JILL JOHNSON		
SITUATION UNIT	DAVE WISCHER		
DOCUMENTATION UNIT	DEIDRE SMITH (VIRTUAL))	7b. Air Operations Branch:	
DEMOBILIZATION UNIT	MIKE HESTON (VIRTUAL) ED MORGAN	AIR OPS BRANCH DIRECTOR	MIKE DAVIS GREG RESER (T)
FIRE BEHAVIOR ANALYST	DON STRAND	AIR ATTACK SUPERVISOR	
GIS SPECIALIST	SHAWN BUSHNELL MIKE TONKEL (T)	AIR SUPPORT SUPERVISOR	TIM LYDA
TECHNOLOGY SUPPORT SPECIALIST	GEORGE JENKINS TODD MALLERY	8. Finance/Administration Section:	
INCIDENT METEOROLOGIST	BOB TOBIN	CHIEF	CHERI FULLER CHRISTINA GOEBEL (T)
6. Logistics Section:		TIME UNIT	CAROL LONG
CHIEF	DAN SOPTICH	PROCUREMENT UNIT	MARK BOHNET
DEPUTY	KEVIN HAUGHTON	COMPENSATION UNIT	CHERI FULLER
SUPPLY UNIT	JOHN KAUPA	COST UNIT	KAY HIGH (VIRTUAL)
FACILITIES UNIT	SCOTT BEAULAUER	ICPI	ROB HECHINGER
GROUND SUPPORT UNIT	MARK ANDERSON		
COMMUNICATIONS UNIT	MISSY PARKER		
MEDICAL UNIT	EAMONN RYAN; DIANA BRAUN LEE VENNING (T)		
9. Prepared By:	Name: JILL JOHNSON	Position/Title: RESL	Signature: 
ICS 203	IAP Page	Date/Time: 08/27/2021 2000	

Fire Weather Forecast

FORECAST NO: 21
PREDICTION FOR: Saturday
Shift Date: August 28, 2021
TIME AND DATE
FORECAST ISSUED: 8/27/2021 at 2000

INCIDENT: Walker-Chickadee Fires
UNIT: DNR-USFS-BLM
SIGNED: *Bob Tabix*
Incident Meteorologist (IMET)

Weather Discussion: High pressure building into the region will result in a warming and drying trend Saturday and Sunday. This will be followed by a series of low pressure systems that will result in cooler temperatures beginning Monday and lasting through the week. Very little in the way of measurable precipitation is expected.

WEATHER FORECAST: Chickadee

Saturday:

SKY/WEATHER: Partly cloudy.
High Temperature...66-72 above 4000 ft...73-78 below 4000 ft. 24hr chg: Up 4-6 degrees
Min RH.....28-34% above 4000 ft...24-29% below 4000 ft. 24hr chg: Down 10 percent.
20-FOOT WINDS: Northwest winds 8-10 mph with gusts to 15 mph.
CWR (>=0.10")....0% **LAL....**1 **Haines Index...2 (Very Low)** **Mixing Height...6400 ft AGL**

Tonight:

SKY/WEATHER: Mostly clear.
Low Temperature...45-50.
Max RH.....55-65%
20-FOOT WINDS: West-northwest 5-10 mph. Mainly drainage 2-4 mph mid-slopes and valleys after 2300.
CWR (>=0.10")....0% **LAL....**1

WEATHER FORECAST: Walker

Saturday:

SKY/WEATHER: Partly cloudy.
High Temperature...64-70 above 4000 ft...70-75 below 4000 ft.
Min RH.....28-33% above 4000 ft...24-29% below 4000 ft.
20-FOOT WINDS: North 5-10 mph in the morning...becoming southwest 5-10 mph with gusts to 15 mph after 1300.
CWR (>=0.10")....0% **LAL....**1 **Haines Index...2 (Very Low)** **Mixing Height...6200 ft AGL**

Tonight:

SKY/WEATHER: Partly cloudy.
Low Temperature...47-53.
Max RH.....50-60%
20-FOOT WINDS: Southwest 5-10 mph after 1900. Mainly drainage 2-4 mph mid-slopes and valleys after 2400.
CWR (>=0.10")....0% **LAL....**1

Extended Outlook

Sunday...Partly cloudy. High: 65-80. Min RH: 24-34% Winds: SE-SW 8-10 mph with gusts to 15 mph.
Monday... Mostly cloudy. High: 60-75. Min RH: 25-35% Winds: Southwest 8-12 mph gusts to 15 mph.
Tuesday... Partly cloudy. A chance of showers. High: 60-70. Min RH: 30-40% Winds: Northwest-north 10-12 with gusts to 15 mph.

FIRE BEHAVIOR FORECAST

FORECAST NUMBER: 21	TYPE OF FIRE: Wildland
FIRE NAME: Walker Creek & Chickadee Creek	OPERATIONAL PERIOD: Aug 28-29 2021 0600-0600
DATE ISSUED: Aug 27, 2021	TIME ISSUED: 2000
UNIT: WA DNR, BLM, USFS	Don Strand FBAN

INPUTS

WEATHER SUMMARY: See attached fire weather forecast

OUTPUTS

FIRE BEHAVIOR

FUELS: The fires are burning mostly in mixed conifer timber consisting of Douglas-fir, western larch, Engelmann spruce, and lodgepole pine below 6,000'. Sub-alpine fir, white bark pine, and lodgepole pine occur above 6,000'. All timber types have ladder fuels with black moss/lichens that make for an easy transition to crown fire. Dead fine fuels, grass, and slash will increase surface fire spread. Most live fuels, except for red alder, are available to carry fire and fuel moistures will continue to drop with seasonal drying.

GENERAL: Expect continued moderated fire behavior. Expect smoldering and creeping early and in the afternoon as humidity decreases a slight increase in backing and flanking. Continue to watch for hold over spots from previous fire activity. Heavy fuels will burn until consumed or extinguished. Single tree torching may occur where pockets of heat remain under ladder fuels and where close to fire edge can cause spotting. Pitchy/punky wood and fine fuels still will be receptive fuel beds. Any spotting will be short range.

SPECIFIC:

Chickadee: Fire spread has been terrain and fuels driven with spotting and roll outs. Today, pay attention for hold over spots for previous fire activity. Burn out operations may be less effective early in the day but should improve in the afternoon. Fire behavior will be low with smoldering and limited backing and flanking with increasing potential in the afternoon. Areas exposed to afternoon wind gusts will experience moderate intensities at times. Potential for isolated torching exists. Winds will likely be southerly in the Sinlahekin

Fuel Moistures- Aeneas LO RAWS from yesterday were- 10-hour 16%, 100-hour 14%, 1000-hour 14%. ERC near 54th percentile or below average for this time of year as compared to the last seven fire seasons.

Probability of Ignition will approach 60% unshaded and 40% shaded.

Walker: Expect moderated fire activity with cooler conditions. Fire will be smoldering and creeping early, with humidity decreasing into the mid 30's later in the afternoon a slight increase in fire behavior potential exists. Continue to watch for surface fire near control lines with forecasted afternoon southwest wind. A slight chance for torching exists. Conditions to burnout will likely be varied depending on humidity and fuel loading.

Fuel Moistures- Lost Lake RAWS from yesterday were- 10-hour 21%, 100-hour 14%, 1000-hour 16%. ERC near 31st percentile, well below average for this time of year as compared to the last seven fire seasons. Note: Areas that received less precip than the RAWs NW of fire may have slightly lower fuel moistures.

Probability of Ignition will approach 60% unshaded and 40% shaded.

Night: Favorable weather and fuels will reduce fire activity after sundown. Minimal spread potential early in the shift while heavy fuels will hold heat overnight. Stump holes burning deep

AIR OPERATIONS: Expect some turbulence in areas of complex terrain

SAFETY

Continue to monitor conditions by periodically taking weather and calculating the fine dead fuel moisture and Probability of Ignition

Weather becoming slight warmer and drier the next few days. So, remember fuel and fire conditions will vary.



SAFETY MESSAGE

28-29 August 2021

INCIDENT: Walker Creek/Chickadee

OPERATIONAL PERIOD: 0600-0600

COVID MITIGATIONS

Please review your COVID/Viral Transmission prevention guidelines. Maintain your distancing to the greatest extent, cough or sneeze away from other people, mask up when indoors and respect the personal space of others. If you begin feeling ill, notify your supervisor and seek medical attention for screening.

HOW TO MAINTAIN FOCUS



Focus is the thinking skill that allows people to begin a task without procrastination and then maintain their attention and effort until the task is complete. Focus helps people pay attention amid distractions and setbacks and to sustain the effort and energy needed to reach a goal. We all know focus can be hard to maintain when the task doesn't meet our motivation threshold. Remember the successful completion of the mission depends on every single person to maintain and perform. Lost focus equals lost productivity and a rise in risk!

Ensure LCES in in place before engaging and continue to evaluate during the entire shift.

SAFETY OFFICER: Troy Corn, Jack Cates

Deliberate Risk Assessment-Hazard Summary 28-29 August 2021

Hazard	Mitigation	Post Risk
Viral Transmission Mitigations, Communicable Disease	Maintain awareness of health, perform self checks, maintain social distancing, wear face coverings when indoors or when social distancing cannot be maintained. Report and isolate if feeling symptomatic. Coordinate with Okanogan County Public Health for testing, reporting and isolation as needed.	Low
Extraction Time	Identify medivac sites and helispots. Initiate ground transport to accident site. Identify EMT/EMTP from resources assigned to division. Provide line qualified paramedics to each division as available. Review IWI protocol to ensure familiarity. Utilize civilian medivac as treatment/timing dictates. Evaluate on-going need for repositioning medical personnel.	High
Heavy Equipment	Post lookouts around equipment work areas. Establish communications with equipment boss and operator. Do not work down slope from equipment. Familiarize crews with specialty equipment and processes.	High
Hazard Trees	Use avoidance to limit exposure time. Snag ahead to avoid exposure. Use qualified fallers, blasting, or alternate methods if needed. Conduct on-going risk analysis of all work areas. Follow Hazard Tree Safety Guidelines (IRPG page 22).	High
Aircraft	Utilize Air Attack. Ensure all resources are a safe distance from all bucket and retardant drops. Establish LCES. Utilize air to ground primary radio channel. Reference IRPG (Safe aircraft operations pg. 56-58). Ensure IA resources have coordination with unassigned local air resources to provide deconfliction.	High
Steep Terrain/Gravity	Do not work crews above or below each other. Post lookouts for rolling material. Watch footing in loose soil, rock and around vegetation. Do not work below heavy equipment. Scout and identify travel routes. Establish LCES.	Moderate
Physical Factors	Maintain hydration schedule. Closely monitor work rate and implement rest periods. Maintain nutrition. Ensure adequate work/rest.	Moderate
Environmental Factors	Assign medical personnel to camp. Assess for known allergies and report to medical personnel. Obtain Bee Bopper/wasp spray and yellow jacket traps. Maintain an awareness of livestock. Keep an eye out for wildlife including bears, cougars, and rattlesnakes.	Moderate
Fire Behavior	Be aware of burn windows and weather impacts and min/max RH for flashy fuels/local conditions. Be aware of increased fire behavior and concerns specific to thunderstorm safety (IRPG p. 21). Report changes to FBAN and IMET. Include thunderstorm safety message in IAP.	Moderate
Unburned Fuels/Firing Ops	Establish LCES. Ensure management action points are implemented and followed. Weather updates as needed during burning operations. Locate indirect firelines to minimize the amount of unburned fuels. Follow Interagency Ignition Guide. Ensure communications between all firing operations. Establish road security at all firing sites. Follow approved firing plan for unburned fuels.	Moderate
Transportation	Signing of all incident roads that provide access to divisions. Daily updated travel plan maps. Practice defensive driving. In local communities obey the posted speed limits. Use reader boards to control entry as needed. Identify and evaluate contingency and alternate escape and travel routes.	Moderate
Communication	Evaluate for dead zones prior to engagement. Utilize human repeaters as needed. Ensure accountability of resources in problem areas.	Low
Public Interaction	Place new road closures as necessary and maintain current closures. Maintain awareness of evacuation areas and provide accurate information dissemination.	Low

Division/Group Assignment List (ICS 204 WF)
Controlled Unclassified Information//Basic

1. Incident Name:			3.			
WALKER CREEK & CHICKADEE CREEK			Branch:		Division/Group	
2. Operational Period: DAY/NIGHT			I		A	
Date/Time From: 08/28/2021 0600 SAT		Date/Time To: 08/29/2021 0600 SUN				
4. Operations Personnel						
OPERATIONS CHIEF		TONY ENGEL; AARON ROWE JEROMY WILSON (T)		BRANCH DIRECTOR		CHRIS ZOLLER
SAFETY OFFICER		TROY CORN JACK CATES		DIVISION/GROUP SUPERVISOR		TY GRIPP
5. Resources Assigned this Period						
Strike Team / Task Force / Resource Designator		LWD	Leader	Number Persons	Drop Off PT./Time	Pick Up PT./Time
O-435 SOF2		09/11	JOSH NORTHRUP	1	DP-354/0600	DP-354/1800
E-123 ENG4 HI COUNTRY		08/28	TYLER STEVENSON	3	DP-354/0600	DP-354/1800
E-184 ENG6 SILVER TIP FORESTRY		08/28	JACOB STEINSHOUER	3	DP-354/0600	DP-354/1800
E-214 ENG6 WHITEHEAD REFORESTATION		08/31	JOHN MIX	3	DP-354/0600	DP-354/1800
E-219 ENG3 HEK JONES		09/02	BRINN JONES	3	DP-354/0600	DP-354/1800
E-261 ENG5 LATE SUMMERS WILDFIRE		09/07	JOSH CROLLARD	3	DP-354/0600	DP-354/1800
E-284 ENG6 REPUBLIC E622 (IA)		09/06	GABE GIDDINGS	4	DP-354/0600	DP-354/1800
E-22 WTS2 RAINS CONTRACTING		08/29	JIM HUTTON	1	DP-354/0600	DP-354/1800
E-196 PCT3 TUNK PUMPER CAT		09/04	CLARENCE FINLEY	2	DP-354/0600	DP-354/1800
E-24 AMBU STEVENS SHERIFF AMBU 1 (ALS)		09/01	BRITTIAN	2	DP-354/0600	DP-354/1800
O-211 EMTF		08/28	CODY BARWELL	1	DP-354/0600	DP-354/1800
8. Division/Group Communication Summary						
Function	Channel	RX Frequency N/W	RX Tone/NAC	TX Frequency N/W	TX Tone/NAC	Mode
COMMAND	1	170.0625	114.8	162.1750	114.8	A
COMMAND	2	170.3125	114.8	167.8375	114.8	A
COMMAND	3	170.4500	114.8	168.1000	114.8	A
TACTICAL	6	168.0500	114.8	168.0500	114.8	A
AIR TO GROUND	15	168.1375		168.1375		A
9. Prepared By (Resource Unit Leader)			Approved By (Planning Section Chief)		Date	Time
JILL JOHNSON			MARGE HUTCHINSON		08/27/2021	2000

Division/Group Assignment List (ICS 204 WF)

Controlled Unclassified Information//Basic

1. Incident Name:			3.			
WALKER CREEK & CHICKADEE CREEK			I	A		
2. Operational Period: DAY/NIGHT						
Date/Time From: 08/28/2021 0600	SAT	Date/Time To: 08/29/2021 0600	SUN			
4. Operations Personnel						
OPERATIONS CHIEF		TONY ENGEL; AARON ROWE JEROMY WILSON (T)		BRANCH DIRECTOR		CHRIS ZOLLER
SAFETY OFFICER		TROY CORN JACK CATES		DIVISION/GROUP SUPERVISOR		TY GRIPP
5. Resources Assigned this Period						
Strike Team / Task Force / Resource Designator	LWD	Leader	Number Persons	Drop Off PT./Time	Pick Up PT./Time	
6. Control Operations/Work Assignments:						
<p>Task: Patrol and mop up from the T/A break to the A/F break. Mop areas that threaten structures or other values at risk; consider forecast weather, seasonality and the probability of fire actually impacting values.</p> <p>Purpose: Contain fire progression within the current fire perimeter limit threat to structures in the Bonaparte Lake area.</p> <p>End State: Fire is controlled within the current fire perimeter and structures at Bonaparte Lake are no longer threatened.</p>						
7. Special Instructions:						
<p>Division Breakout will be at DP354.</p> <p>Notify READ if cultural materials are found during mop up. Leave in place, flag and GPS. READs (D. Pearson, M. Wilson & A. Miller) will notify DIVS when entering or leaving the division.</p>						
8. Division/Group Communication Summary						
Function	Channel	RX Frequency N/W	RX Tone/NAC	TX Frequency N/W	TX Tone/NAC	Mode
COMMAND	1	170.0625	114.8	162.1750	114.8	A
COMMAND	2	170.3125	114.8	167.8375	114.8	A
COMMAND	3	170.4500	114.8	168.1000	114.8	A
TACTICAL	6	168.0500	114.8	168.0500	114.8	A
AIR TO GROUND	15	168.1375		168.1375		A
9. Prepared By (Resource Unit Leader)			Approved By (Planning Section Chief)		Date	Time
JILL JOHNSON			MARGE HUTCHINSON		08/27/2021	2000

Division/Group Assignment List (ICS 204 WF)
Controlled Unclassified Information//Basic

1. Incident Name:				3.		
WALKER CREEK & CHICKADEE CREEK				Branch: I	Division/Group F	
2. Operational Period: DAY/NIGHT						
Date/Time From: 08/28/2021 0600 SAT		Date/Time To: 08/29/2021 0600 SUN				
4. Operations Personnel						
OPERATIONS CHIEF		TONY ENGEL; AARON ROWE JEROMY WILSON (T)		BRANCH DIRECTOR		ZOLLER, CHRIS
SAFETY OFFICER		TROY CORN; JACK CATES		DIVISION/GROUP SUPERVISOR		CODY ACORD SCOTT NIELSEN (T)
5. Resources Assigned this Period						
Strike Team / Task Force / Resource Designator	LWD	Leader	Number Persons	Drop Off PT./Time	Pick Up PT./Time	
O-435 SOF2	09/11	JOSH NORTHRUP	1	DP-354/0600	DP-354/1800	
O-313.11 TFLD	08/28	JONATHAN ZIEGLER	1	DP-354/0600	DP-354/1800	
O-350 TFLD (T)	09/06	CORY FISCHER	1	DP-354/0600	DP-354/1800	
O-260 STEN	09/01	DAVID HADLEY	1	DP-354/0600	DP-354/1800	
O-422 SMOD REPUBLIC C-201		BRAD FREDRICKSON	10	DP-354/0600	DP-354/1800	
C-82 HC2 NORTH REFORESTATION CO	09/08	JOSE RINCON	20	DP-354/0600	DP-354/1800	
E-5 ENG3 ARCHER MOUNTAIN	08/29	TOM HATTON	3	DP-354/0600	DP-354/1800	
E-87 ENG6 OK-OKS EC 95	09/01	JUSTIN L HOOPENGARNER	3	DP-354/0600	DP-354/1800	
E-95 ENG6 TENNESSEE E3762	08/31	DILLON MASH	4	DP-354/0600	DP-354/1800	
E-215 ENG4 GOODING E91826	08/30	MITCH KISSEL	3	DP-354/0600	DP-354/1800	
E-217 ENG6 ACCESS FIRE	09/04	KEN VIRDEN	3	DP-354/0600	DP-354/1800	
E-218 ENG4 IDAHO HEATSEEKER 19	09/04	CASEY JOHNSON	3	DP-354/0600	DP-354/1800	
E-235 ENG6 SPOKANE B51	09/03	JOSH SAMPSON	3	DP-354/0600	DP-354/1800	
E-236 ENG3 WA-SPFN 3	09/03	DENNIS STARRING	3	DP-354/0600	DP-354/1800	
E-256 ENG5 WILD FIRE SERVICES	09/07	JAMIE RODOM	1	DP-354/0600	DP-354/1800	
8. Division/Group Communication Summary						
Function	Channel	RX Frequency N/W	RX Tone/NAC	TX Frequency N/W	TX Tone/NAC	Mode
COMMAND	1	170.0625	114.8	162.1750	114.8	A
COMMAND	2	170.3125	114.8	167.8375	114.8	A
COMMAND	3	170.4500	114.8	168.1000	114.8	A
TACTICAL	7	168.2000	114.8	168.2000	114.8	A
AIR TO GROUND	15	168.1375		168.1375		A
9. Prepared By (Resource Unit Leader)			Approved By (Planning Section Chief)		Date	Time
JILL JOHNSON			MARGE HUTCHINSON		08/27/2021	2000

Division/Group Assignment List (ICS 204 WF)
Controlled Unclassified Information//Basic

1. Incident Name:				3.		
WALKER CREEK & CHICKADEE CREEK				Branch: I	Division/Group F	
2. Operational Period: DAY/NIGHT						
Date/Time From: 08/28/2021 0600 SAT		Date/Time To: 08/29/2021 0600 SUN				
4. Operations Personnel						
OPERATIONS CHIEF		TONY ENGEL; AARON ROWE JEROMY WILSON (T)		BRANCH DIRECTOR		ZOLLER, CHRIS
SAFETY OFFICER		TROY CORN; JACK CATES		DIVISION/GROUP SUPERVISOR		CODY ACORD SCOTT NIELSEN (T)
5. Resources Assigned this Period						
Strike Team / Task Force / Resource Designator		LWD	Leader	Number Persons	Drop Off PT./Time	Pick Up PT./Time
E-135 WTS2 FOX CREEK ENTERPRISES		08/30	MAUREEN WEST	1	DP-354/0600	DP-354/1800
E-175 WTS3 STOTTS CONSTRUCTION		09/01	JOSEPH HUDSON	1	DP-354/0600	DP-354/1800
E-1S DOZ3 JONES LOGGING			JASON JONES	2	DP-354/0600	DP-354/1800
E-89 DOZ3 TJ LOGGING, LLC		08/29	TED JONES	2	DP-354/0600	DP-354/1800
E-90 DOZ3 PRICE EXCAVATION, LLC		09/06	DEVIN MCKINNEY	2	DP-354/0600	DP-354/1800
E-146 EXCA STOTTS CONSTRUCTION		09/01	MILES ANDERSON	2	DP-354/0600	DP-354/1800
O-393 EMPF		09/06	ROSS BYRD	1	DP-354/0600	DP-354/1800
8. Division/Group Communication Summary						
Function	Channel	RX Frequency N/W	RX Tone/NAC	TX Frequency N/W	TX Tone/NAC	Mode
COMMAND	1	170.0625	114.8	162.1750	114.8	A
COMMAND	2	170.3125	114.8	167.8375	114.8	A
COMMAND	3	170.4500	114.8	168.1000	114.8	A
TACTICAL	7	168.2000	114.8	168.2000	114.8	A
AIR TO GROUND	15	168.1375		168.1375		A
9. Prepared By (Resource Unit Leader)			Approved By (Planning Section Chief)		Date	Time
JILL JOHNSON			MARGE HUTCHINSON		08/27/2021	2000

Division/Group Assignment List (ICS 204 WF)

Controlled Unclassified Information//Basic

1. Incident Name:				3.			
WALKER CREEK & CHICKADEE CREEK				I		F	
2. Operational Period: DAY/NIGHT							
Date/Time From: 08/28/2021 0600 SAT		Date/Time To: 08/29/2021 0600 SUN					
4. Operations Personnel							
OPERATIONS CHIEF		TONY ENGEL; AARON ROWE JEROMY WILSON (T)		BRANCH DIRECTOR		ZOLLER, CHRIS	
SAFETY OFFICER		TROY CORN; JACK CATES		DIVISION/GROUP SUPERVISOR		CODY ACORD SCOTT NIELSEN (T)	
5. Resources Assigned this Period							
Strike Team / Task Force / Resource Designator		LWD	Leader	Number Persons	Drop Off PT./Time	Pick Up PT./Time	
6. Control Operations/Work Assignments:							
<p>Task Patrol and mop up from the A/F break to the H/Q break. Mop up areas that threaten structures or other values at risk; consider forecast weather, seasonality and the probability of fire actually impacting values.</p> <p>Purpose Contain fire within the current fire perimeter.</p> <p>End State Fire is controlled within the current fire perimeter.</p>							
7. Special Instructions:							
<p>Division breakout will be at the gravel pit.</p> <p>Notify READ if cultural materials are found during mop up. Leave in place, flag and GPS. READs (D. Pearson, M. Wilson & A. Miller) will notify DIVS when entering or leaving the division.</p>							
8. Division/Group Communication Summary							
Function	Channel	RX Frequency N/W	RX Tone/NAC	TX Frequency N/W	TX Tone/NAC	Mode	
COMMAND	1	170.0625	114.8	162.1750	114.8	A	
COMMAND	2	170.3125	114.8	167.8375	114.8	A	
COMMAND	3	170.4500	114.8	168.1000	114.8	A	
TACTICAL	7	168.2000	114.8	168.2000	114.8	A	
AIR TO GROUND	15	168.1375		168.1375		A	
9. Prepared By (Resource Unit Leader)			Approved By (Planning Section Chief)			Date	Time
JILL JOHNSON			MARGE HUTCHINSON			08/27/2021	2000

Division/Group Assignment List (ICS 204 WF)
Controlled Unclassified Information//Basic

1. Incident Name:				3.		
WALKER CREEK & CHICKADEE CREEK				Branch: I	Division/Group H	
2. Operational Period: DAY/NIGHT						
Date/Time From: 08/28/2021 0600 SAT		Date/Time To: 08/29/2021 0600 SUN				
4. Operations Personnel						
OPERATIONS CHIEF		TONY ENGEL; AARON ROWE JEROMY WILSON (T)		BRANCH DIRECTOR		ZOLLER, CHRIS
SAFETY OFFICER		TROY CORN; JACK CATES		DIVISION/GROUP SUPERVISOR		MATT KENNEDY
5. Resources Assigned this Period						
Strike Team / Task Force / Resource Designator	LWD	Leader	Number Persons	Drop Off PT./Time	Pick Up PT./Time	
O-435 SOF2	09/11	JOSH NORTHRUP	1	DP-354/0600	DP-354/1800	
E-129.1 TFLD (T)	08/30	DARCY BODY	1	DP-354/0600	DP-354/1800	
O-342 TFLD	09/05	JEFF MEADOWS	1	DP-354/0600	DP-354/1800	
O-448 TFLD	09/03	MICHAEL MEGEL	1	DP-354/0600	DP-354/1800	
O-223 STEN (T)	08/28	STU HODNOT	1	DP-354/0600	DP-354/1800	
O-351 HEQB (T)	09/05	JADE DRAUSE	1	DP-354/0600	DP-354/1800	
O-399 FOBS	09/08	BRIAN BOLSER	1	DP-354/0600	DP-354/1800	
C-78 HC1 BONNEVILLE IHC	09/08	ERIC EVANS	20	DP-354/0600	DP-354/1800	
C-26 HC2I TONASKET (LOAN / IA)	08/28	JUNIPER MASON	16	DP-354/0600	DP-354/1800	
C-65 HC2 PR REFORESTATION INC	09/04	JARIO SILVA	20	DP-354/0600	DP-354/1800	
C-68 HC2 SZ FORESTRY	08/31	RICHARD FULLERTON	20	DP-354/0600	DP-354/1800	
E-6S ENG6 WORK HORSE	09/07	TY STRATIT	2	DP-354/0600	DP-354/1800	
E-129 ENG6 TONASKET RD E691	08/30	TAYLOR ORTEG	3	DP-354/0600	DP-354/1800	
E-166 ENG5 COWLITZ COUNTY	08/28	ZACHARY HAYDEN	2	DP-354/0600	DP-354/1800	
E-216 ENG3 TFD-2301	09/04	MICHAEL JOHNSON	3	DP-354/0600	DP-354/1800	
E-5003 ENG6 TONASKET RD E612 (LOAN)	08/30	KYLE KERSTIENS	3	DP-354/0600	DP-354/1800	
E-5011 ENG6 COLORADO E681	09/09	CHAD BAKKEN	5	DP-354/0600	DP-354/1800	
8. Division/Group Communication Summary						
Function	Channel	RX Frequency N/W	RX Tone/NAC	TX Frequency N/W	TX Tone/NAC	Mode
COMMAND	1	170.0625	114.8	162.1750	114.8	A
COMMAND	2	170.3125	114.8	167.8375	114.8	A
COMMAND	3	170.4500	114.8	168.1000	114.8	A
TACTICAL	8	168.6000	114.8	168.6000	114.8	A
AIR TO GROUND	15	168.1375		168.1375		A
9. Prepared By (Resource Unit Leader)		Approved By (Planning Section Chief)		Date	Time	
JILL JOHNSON		MARGE HUTCHINSON		08/27/2021	2000	

Division/Group Assignment List (ICS 204 WF)
Controlled Unclassified Information//Basic

1. Incident Name:				3.		
WALKER CREEK & CHICKADEE CREEK				Branch: I	Division/Group H	
2. Operational Period: DAY/NIGHT						
Date/Time From: 08/28/2021 0600 SAT		Date/Time To: 08/29/2021 0600 SUN				
4. Operations Personnel						
OPERATIONS CHIEF		TONY ENGEL; AARON ROWE JEROMY WILSON (T)		BRANCH DIRECTOR		ZOLLER, CHRIS
SAFETY OFFICER		TROY CORN; JACK CATES		DIVISION/GROUP SUPERVISOR		MATT KENNEDY
5. Resources Assigned this Period						
Strike Team / Task Force / Resource Designator	LWD	Leader	Number Persons	Drop Off PT./Time	Pick Up PT./Time	
E-23 WTS1 OROVILLE TRANSIT MIX	08/30	GORDON WOOLEY	3	DP-354/0600	DP-354/1800	
E-254 WTT2 STEVENS COUNTY T9	09/05	ZACHARY WOLF	2	DP-354/0600	DP-354/1800	
EERA WT SILVER NICKEL			1	DP-354/0600	DP-354/1800	
E-223 DOZ2 SILVER-NICKEL LOGGING	09/01	DOC COMBS	2	DP-354/0600	DP-354/1800	
E-13C DOZ1 BOB MCDANIEL LOGGING	08/28	BOB MCDANIEL	1	DP-354/0600	DP-354/1800	
E-32S DOZ4 BOB MCDANIEL LOGGING	09/07	KEN MICHAELS	1	DP-354/0600	DP-354/1800	
E-131 EXCA (MINI) TONASKET RD	09/04	DENISON/ WILLIAMS	2	DP-354/0600	DP-354/1800	
E-272 EXCA NORTH COLUMBIA ENTERPRISES	09/07	SCOTT BUTTERFIELD	2	DP-354/0600	DP-354/1800	
E-8C FEL1 SILVER NICKEL LOGGING	09/05	CHARLES JONES	2	DP-354/0600	DP-354/1800	
E-141 FEL1 BOB MCDANIEL	09/03	RODOLPHO RODRIQUEZ	1	DP-354/0600	DP-354/1800	
E-142 FEL1 WILL LOGGING & CONSTRUCTIO	09/09	ADAM BAKER	1	DP-354/0600	DP-354/1800	
E-143 FEL1 TJ LOGGING	09/08	TIM JONES	2	DP-354/0600	DP-354/1800	
E-147 FEL1 SILVER NICKEL LLC	09/07	MARK SMITH	2	DP-354/0600	DP-354/1800	
E-148 FEL1 SILVER NICKEL LOGGING	09/07	CASEY SILVERTHORN	2	DP-354/0600	DP-354/1800	
E-182 FEL1 BOB MCDANIEL LOGGING	08/30	JAKE BLACK	1	DP-354/0600	DP-354/1800	
E-9C SKD1 SILVER NICKEL LOGGING	09/07	NIK BROOKS	1	DP-354/0600	DP-354/1800	
8. Division/Group Communication Summary						
Function	Channel	RX Frequency N/W	RX Tone/NAC	TX Frequency N/W	TX Tone/NAC	Mode
COMMAND	1	170.0625	114.8	162.1750	114.8	A
COMMAND	2	170.3125	114.8	167.8375	114.8	A
COMMAND	3	170.4500	114.8	168.1000	114.8	A
TACTICAL	8	168.6000	114.8	168.6000	114.8	A
AIR TO GROUND	15	168.1375		168.1375		A
9. Prepared By (Resource Unit Leader)			Approved By (Planning Section Chief)		Date	Time
JILL JOHNSON			MARGE HUTCHINSON		08/27/2021	2000

Division/Group Assignment List (ICS 204 WF)
Controlled Unclassified Information//Basic

1. Incident Name:				3.		
WALKER CREEK & CHICKADEE CREEK				Branch: I	Division/Group H	
2. Operational Period: DAY/NIGHT						
Date/Time From: 08/28/2021 0600 SAT		Date/Time To: 08/29/2021 0600 SUN				
4. Operations Personnel						
OPERATIONS CHIEF		TONY ENGEL; AARON ROWE JEROMY WILSON (T)		BRANCH DIRECTOR		ZOLLER, CHRIS
SAFETY OFFICER		TROY CORN; JACK CATES		DIVISION/GROUP SUPERVISOR		MATT KENNEDY
5. Resources Assigned this Period						
Strike Team / Task Force / Resource Designator		LWD	Leader	Number Persons	Drop Off PT./Time	Pick Up PT./Time
E-10C SKD1 SILVER NICKEL LOGGING		09/01	RILEY BURK	2	DP-354/0600	DP-354/1800
E-11C SKD1 SILVER NICKEL LOGGING		09/02	JOE KIDDERMAN	2	DP-354/0600	DP-354/1800
E-144 SKD4 TJ LOGGING		09/01	WADE FIELD	1	DP-354/0600	DP-354/1800
E-145 SKD1 WILL LOGGING & CONSTR		09/05	COLTEN GRONLUND	1	DP-354/0600	DP-354/1800
E-183 SKD1 BOB MCDANIAL LOGGING		09/05	BRANDON WHEELER	1	DP-354/0600	DP-354/1800
E-113 SKG2 YELLOW JACKET FIRE EQUIPMENT		09/08	NICK BADENHOP	2	DP-354/0600	DP-354/1800
E-139 SKG1 SOFT TRACK ATTACK		09/08	JOSH COVEY	2	DP-354/0600	DP-354/1800
EERA SELF LOADER			BOB MCDANIEL	2	DP-354/0600	DP-354/1800
E-160 LDFR SILVER NICKEL LOGGING		09/07	BURT SILVERTHORN	1	DP-354/0600	DP-354/1800
O-245 EMPF		09/06	RICHARD SEWELL	1	DP-354/0600	DP-354/1800
8. Division/Group Communication Summary						
Function	Channel	RX Frequency N/W	RX Tone/NAC	TX Frequency N/W	TX Tone/NAC	Mode
COMMAND	1	170.0625	114.8	162.1750	114.8	A
COMMAND	2	170.3125	114.8	167.8375	114.8	A
COMMAND	3	170.4500	114.8	168.1000	114.8	A
TACTICAL	8	168.6000	114.8	168.6000	114.8	A
AIR TO GROUND	15	168.1375		168.1375		A
9. Prepared By (Resource Unit Leader)			Approved By (Planning Section Chief)		Date	Time
JILL JOHNSON			MARGE HUTCHINSON		08/27/2021	2000

Division/Group Assignment List (ICS 204 WF)
Controlled Unclassified Information//Basic

1. Incident Name:			3.			
WALKER CREEK & CHICKADEE CREEK			Branch:		Division/Group	
2. Operational Period: DAY/NIGHT			I		H	
Date/Time From: 08/28/2021 0600 SAT		Date/Time To: 08/29/2021 0600 SUN				
4. Operations Personnel						
OPERATIONS CHIEF		TONY ENGEL; AARON ROWE JEROMY WILSON (T)		BRANCH DIRECTOR		ZOLLER, CHRIS
SAFETY OFFICER		TROY CORN; JACK CATES		DIVISION/GROUP SUPERVISOR		MATT KENNEDY
5. Resources Assigned this Period						
Strike Team / Task Force / Resource Designator		LWD	Leader	Number Persons	Drop Off PT./Time	Pick Up PT./Time
6. Control Operations/Work Assignments:						
<p>Task Secure fire edge between A/F break and DP 320. Complete indirect road prep on alternate (indirect) containment line.</p> <p>Purpose Contain fire within current fire perimeter.</p> <p>End State Fire is controlled within the current fire perimeter and indirect containment line is completed.</p>						
7. Special Instructions:						
<p>Division breakout will be at the park pavilion.</p> <p>Notify READ if cultural materials are found during mop up. Leave in place, flag and GPS. READs (D. Pearson, M. Wilson & A. Miller) will notify DIVS when entering or leaving the division.</p>						
8. Division/Group Communication Summary						
Function	Channel	RX Frequency N/W	RX Tone/NAC	TX Frequency N/W	TX Tone/NAC	Mode
COMMAND	1	170.0625	114.8	162.1750	114.8	A
COMMAND	2	170.3125	114.8	167.8375	114.8	A
COMMAND	3	170.4500	114.8	168.1000	114.8	A
TACTICAL	8	168.6000	114.8	168.6000	114.8	A
AIR TO GROUND	15	168.1375		168.1375		A
9. Prepared By (Resource Unit Leader)			Approved By (Planning Section Chief)		Date	Time
JILL JOHNSON			MARGE HUTCHINSON		08/27/2021	2000

Division/Group Assignment List (ICS 204 WF)
Controlled Unclassified Information//Basic

1. Incident Name:				3.		
WALKER CREEK & CHICKADEE CREEK				Branch: II	Division/Group Q	
2. Operational Period: DAY/NIGHT						
Date/Time From: 08/28/2021 0600 SAT		Date/Time To: 08/29/2021 0600 SUN				
4. Operations Personnel						
OPERATIONS CHIEF		TONY ENGEL; AARON ROWE JEROMY WILSON (T)		BRANCH DIRECTOR		JERRAN FLINDERS
SAFETY OFFICER		TROY CORN; JACK CATES		DIVISION/GROUP SUPERVISOR		MICHAEL GOOD JAMES DICKINSON (T)
5. Resources Assigned this Period						
Strike Team / Task Force / Resource Designator	LWD	Leader	Number Persons	Drop Off PT./Time	Pick Up PT./Time	
O-435 SOF2	09/11	JOSH NORTHRUP	1	H30/0600	H30/1800	
O-285 HEQB	09/01	TRISTAN CURRIN	1	H30/0600	H30/1800	
E-130.1 HEQB (T)	08/30	JEFFREY BABB	1	H30/0600	H30/1800	
O-428 HEQB	09/01	CHRIS BRUBAKER	1	H30/0600	H30/1800	
E-120 ENG6 ARCHER MOUNTAIN ENTERPRISES	09/03	JUSTUS BARTON	3	H30/0600	H30/1800	
E-130 ENG6 TONASKET RD E692	08/30	DAVE HYLTON	3	H30/0600	H30/1800	
E-4C FEL1 WILL LOGGING & CONSTR	09/03	BRANDON LATIMER	1	H30/0600	H30/1800	
E-31C FEL1 NORTH PINE	09/04	SCOTT HUGHES	1	H30/0600	H30/1800	
E-231 FEL1 MCCUEN	09/03	NATHAN JOHNSON	2	H30/0600	H30/1800	
E-232 FEL2 NORTH COLUMBIA ENTERPRISES	09/04	DAN LOTZ	2	H30/0600	H30/1800	
E-280 LOG PROCESSOR TURLEY LOGGING	09/09	BRAINDON HUBBARD	3	H30/0600	H30/1800	
E-237 LOG PROCESSOR WILL LOGGING	09/04	JASON SUTTON	2	H30/0600	H30/1800	
E-3C SKD1 WILL LOGGING & CONSTR	09/07	SHANE HIGBEE	1	H30/0600	H30/1800	
E-233 SKD2 NORTH COLUMBIA ENTERPR	09/03	DALLES CRAPE	2	H30/0600	H30/1800	
E-234 SKD2 NORTH COLUMBIA ENTERPRISES	09/03	TOM LOTZE	2	H30/0600	H30/1800	
8. Division/Group Communication Summary						
Function	Channel	RX Frequency N/W	RX Tone/NAC	TX Frequency N/W	TX Tone/NAC	Mode
COMMAND	1	170.0625	114.8	162.1750	114.8	A
COMMAND	2	170.3125	114.8	167.8375	114.8	A
COMMAND	3	170.4500	114.8	168.1000	114.8	A
TACTICAL	11	168.2500	114.8	168.2500	114.8	A
AIR TO GROUND	15	168.1375		168.1375		A
9. Prepared By (Resource Unit Leader)			Approved By (Planning Section Chief)		Date	Time
JILL JOHNSON			MARGE HUTCHINSON		08/27/2021	2000

Division/Group Assignment List (ICS 204 WF)
Controlled Unclassified Information//Basic

1. Incident Name:			3.			
WALKER CREEK & CHICKADEE CREEK			Branch:		Division/Group	
2. Operational Period: DAY/NIGHT			II		Q	
Date/Time From: 08/28/2021 0600 SAT	Date/Time To: 08/29/2021 0600 SUN					
4. Operations Personnel						
OPERATIONS CHIEF		TONY ENGEL; AARON ROWE JEROMY WILSON (T)		BRANCH DIRECTOR		JERRAN FLINDERS
SAFETY OFFICER		TROY CORN; JACK CATES		DIVISION/GROUP SUPERVISOR		MICHAEL GOOD JAMES DICKINSON (T)
5. Resources Assigned this Period						
Strike Team / Task Force / Resource Designator		LWD	Leader	Number Persons	Drop Off PT./Time	Pick Up PT./Time
E-199 MAST MAST EAGLE CAP		08/31	BEN FISCHER	2	H30/0600	H30/1800
E-200 MAST BRUCE YOUNG LOGGING		09/07	MATT MCLAREN	2	H30/0600	H30/1800
E-277 MAST SWEDBERG CONTRACTING CORP.		09/09	STEVEN MEDDOCK	2	H30/0600	H30/1800
O-221 EMPF		09/05	DAVE BRIDGES	1	H30/0600	H30/1800
6. Control Operations/Work Assignments:						
<p>Task Complete indirect line utilizing road systems between H/Q and Q/T break. Limit road prep to the extent needed to contain fire progression; consider predicted weather, seasonality and the likelihood of future fire progression the north.</p> <p>Purpose Establish indirect containment line to be used if fire progression continues to the north in DIVS Q.</p> <p>End State Indirect line established between H/Q and Q/T break; line is suitable for firing operation to limit potential future fire progression to the north.</p>						
7. Special Instructions:						
Division breakout will be at H30 Notify READ if cultural materials are found during mop up. Leave in place, flag and GPS. READs (D. Pearson, M. Wilson & A. Miller) will notify DIVS when entering or leaving the division.						
8. Division/Group Communication Summary						
Function	Channel	RX Frequency N/W	RX Tone/NAC	TX Frequency N/W	TX Tone/NAC	Mode
COMMAND	1	170.0625	114.8	162.1750	114.8	A
COMMAND	2	170.3125	114.8	167.8375	114.8	A
COMMAND	3	170.4500	114.8	168.1000	114.8	A
TACTICAL	11	168.2500	114.8	168.2500	114.8	A
AIR TO GROUND	15	168.1375		168.1375		A
9. Prepared By (Resource Unit Leader)			Approved By (Planning Section Chief)		Date	Time
JILL JOHNSON			MARGE HUTCHINSON		08/27/2021	2000

Division/Group Assignment List (ICS 204 WF)
Controlled Unclassified Information//Basic

1. Incident Name:				3.		
WALKER CREEK & CHICKADEE CREEK				Branch: II	Division/Group T	
2. Operational Period: DAY/NIGHT						
Date/Time From: 08/28/2021 0600 SAT		Date/Time To: 08/29/2021 0600 SUN				
4. Operations Personnel						
OPERATIONS CHIEF		TONY ENGEL; AARON ROWE JEROMY WILSON (T)		BRANCH DIRECTOR		JERRAN FLINDERS
SAFETY OFFICER		TROY CORN; JACK CATES		DIVISION/GROUP SUPERVISOR		MICHAEL JACKSON
5. Resources Assigned this Period						
Strike Team / Task Force / Resource Designator	LWD	Leader	Number Persons	Drop Off PT./Time	Pick Up PT./Time	
O-435 SOF2	09/11	JOSH NORTHRUP	1	H30/0600	H30/1800	
O-286 HEQB (T)	09/01	KEVIN CARLSEN	1	H30/0600	H30/1800	
O-222 TFLD	08/28	KURT STICH	1	H30/0600	H30/1800	
O-443 TFLD	09/02	REID MARQUART	1	H30/0600	H30/1800	
O-23 FMOD BAILEY LOGGING	09/03	TAYLOR EVANS	2	H30/0600	H30/1800	
C-22 HC2 PR REFORESTATION	09/01	MARCO MENDOZA	20	H30/0600	H30/1800	
E-124 ENG6 METHOW RIVER	08/28	TODD FRIESZ	3	H30/0600	H30/1800	
E-162 ENG6 COWLITZ 2 BR-21	08/28	ROBERT BELL	2	H30/0600	H30/1800	
E-164 ENG6 WAHAKIYAKUM 4 BRUSH 405	08/28	MICHAEL JOHNSON	2	H30/0600	H30/1800	
E-165 ENG6 WAHAKIYAKUM 4 E404	08/28	JACK LEAVITT	3	H30/0600	H30/1800	
E-185 ENG6 AEGIS LOGISTICS	08/28	JOHN QUERIN	3	H30/0600	H30/1800	
E-186 ENG6 AEGIS LOGISTICS	08/28	RANDY WIGGINS	2	H30/0600	H30/1800	
E-212 ENG4 FIRE WORKS	09/01	LAWRENCE GROVER	3	H30/0600	H30/1800	
E-220 ENG4 OWSLEY CANYON ENG CO	09/01	DANNY CALLAHAN	3	H30/0600	H30/1800	
8. Division/Group Communication Summary						
Function	Channel	RX Frequency N/W	RX Tone/NAC	TX Frequency N/W	TX Tone/NAC	Mode
COMMAND	1	170.0625	114.8	162.1750	114.8	A
COMMAND	2	170.3125	114.8	167.8375	114.8	A
COMMAND	3	170.4500	114.8	168.1000	114.8	A
TACTICAL	9	166.7250	114.8	166.7250	114.8	A
AIR TO GROUND	15	168.1375		168.1375		A
9. Prepared By (Resource Unit Leader)			Approved By (Planning Section Chief)		Date	Time
JILL JOHNSON			MARGE HUTCHINSON		08/27/2021	2000

Division/Group Assignment List (ICS 204 WF)

Controlled Unclassified Information//Basic

1. Incident Name:				3.		
WALKER CREEK & CHICKADEE CREEK				II	T	
2. Operational Period: DAY/NIGHT						
Date/Time From: 08/28/2021 0600 SAT		Date/Time To: 08/29/2021 0600 SUN				
4. Operations Personnel						
OPERATIONS CHIEF		TONY ENGEL; AARON ROWE JEROMY WILSON (T)		BRANCH DIRECTOR		JERRAN FLINDERS
SAFETY OFFICER		TROY CORN; JACK CATES		DIVISION/GROUP SUPERVISOR		MICHAEL JACKSON
5. Resources Assigned this Period						
Strike Team / Task Force / Resource Designator	LWD	Leader	Number Persons	Drop Off PT./Time	Pick Up PT./Time	
E-42 WTS2 EVAN FINK	08/29	DAKOTA MEYER	1	H30/0600	H30/1800	
E-20C DOZ3 SILVER-NICKEL LOGGING	08/19	GERALD SCHOLZ	2	H30/0600	H30/1800	
E-80 DOZ3 MCMILLAN CONSTRUCTION	08/20	DOUG MCMILLAN	2	H30/0600	H30/1800	
E-92 DOZ2 PRICE EXCAVATION LLC	09/03	JAMES PRICE	2	H30/0600	H30/1800	
E-181 DOZ3 MC NALL CONSTRUCTION	09/08	BRYAN TIM	2	H30/0600	H30/1800	
E-114 SKDS SOFT TRACK ATTACK	08/30	DJ MCCRACKEN	2	H30/0600	H30/1800	
O-396.1 EMPF	09/06	MACK MARIN	1	H30/0600	H30/1800	
8. Division/Group Communication Summary						
Function	Channel	RX Frequency N/W	RX Tone/NAC	TX Frequency N/W	TX Tone/NAC	Mode
COMMAND	1	170.0625	114.8	162.1750	114.8	A
COMMAND	2	170.3125	114.8	167.8375	114.8	A
COMMAND	3	170.4500	114.8	168.1000	114.8	A
TACTICAL	9	166.7250	114.8	166.7250	114.8	A
AIR TO GROUND	15	168.1375		168.1375		A
9. Prepared By (Resource Unit Leader)			Approved By (Planning Section Chief)		Date	Time
JILL JOHNSON			MARGE HUTCHINSON		08/27/2021	2000

Division/Group Assignment List (ICS 204 WF)
Controlled Unclassified Information//Basic

1. Incident Name:				3.		
WALKER CREEK & CHICKADEE CREEK				Branch: II	Division/Group T	
2. Operational Period: DAY/NIGHT						
Date/Time From: 08/28/2021 0600 SAT		Date/Time To: 08/29/2021 0600 SUN				
4. Operations Personnel						
OPERATIONS CHIEF		TONY ENGEL; AARON ROWE JEROMY WILSON (T)		BRANCH DIRECTOR		JERRAN FLINDERS
SAFETY OFFICER		TROY CORN; JACK CATES		DIVISION/GROUP SUPERVISOR		MICHAEL JACKSON
5. Resources Assigned this Period						
Strike Team / Task Force / Resource Designator		LWD	Leader	Number Persons	Drop Off PT./Time	Pick Up PT./Time
6. Control Operations/Work Assignments:						
<p>Task Secure and mop up fire perimeter between Q/T break to T/A break; consider predicted weather, seasonality and the likelihood of future fire progression beyond the current fire perimeter.</p> <p>Purpose Fire is contained east of the current fire perimeter.</p> <p>End State Fire perimeter between Q/T break and T/A break is controlled; threat of future fire progression to the west is limited.</p>						
7. Special Instructions:						
<p>Division breakout will be at DP-372.</p> <p>Notify READ if cultural materials are found during mop up. Leave in place, flag and GPS. READs (D. Pearson, M. Wilson & A. Miller) will notify DIVS when entering or leaving the division.</p>						
8. Division/Group Communication Summary						
Function	Channel	RX Frequency N/W	RX Tone/NAC	TX Frequency N/W	TX Tone/NAC	Mode
COMMAND	1	170.0625	114.8	162.1750	114.8	A
COMMAND	2	170.3125	114.8	167.8375	114.8	A
COMMAND	3	170.4500	114.8	168.1000	114.8	A
TACTICAL	9	166.7250	114.8	166.7250	114.8	A
AIR TO GROUND	15	168.1375		168.1375		A
9. Prepared By (Resource Unit Leader)			Approved By (Planning Section Chief)		Date	Time
JILL JOHNSON			MARGE HUTCHINSON		08/27/2021	2000

Division/Group Assignment List (ICS 204 WF)
Controlled Unclassified Information//Basic

1. Incident Name:				3.		
WALKER CREEK & CHICKADEE CREEK				III	C	
2. Operational Period: DAY/NIGHT						
Date/Time From: 08/28/2021 0600 SAT		Date/Time To: 08/29/2021 0600 SUN				
4. Operations Personnel						
OPERATIONS CHIEF		TONY ENGEL; AARON ROWE JEROMY WILSON (T)		BRANCH DIRECTOR		BEAU KIDD
SAFETY OFFICER		TROY CORN; JACK CATES		DIVISION/GROUP SUPERVISOR		BOB HINDS
5. Resources Assigned this Period						
Strike Team / Task Force / Resource Designator	LWD	Leader	Number Persons	Drop Off PT./Time	Pick Up PT./Time	
O-435 SOF2	09/09	JOSH NORTHRUP	1	BASE CAMP/0600	BASE CAMP/1800	
O-177 TFLD (LOAN)	09/08	MICHAEL NICK	1	BASE CAMP/0600	BASE CAMP/1800	
O-294 TFLD	09/02	SHANNON MOORE	1	BASE CAMP/0600	BASE CAMP/1800	
O-377 TFLD	09/07	STEPHEN DECOOK	1	BASE CAMP/0600	BASE CAMP/1800	
O-423 HEQB	09/09	KYLE BUCKMILLER	1	BASE CAMP/0600	BASE CAMP/1800	
O-9002 HEQB (LOAN)	09/08	SKYLER GOODRICH	1	BASE CAMP/0600	BASE CAMP/1800	
O-9006 HEQB (LOAN)	09/08	MATT SMITH	1	BASE CAMP/0600	BASE CAMP/1800	
O-247 FMOD BROTHERS FIRE LLC	08/30	TOM HOFFMAN	2	BASE CAMP/0600	BASE CAMP/1800	
C-69 HC2I DIAMOND FIRE 2B	08/31	BRADLEY EMERY	20	BASE CAMP/0600	BASE CAMP/1800	
C-80 HC2 COLVILLE 1	09/08	DESMOND YAZZIE	21	BASE CAMP/0600	BASE CAMP/1800	
E-255 ENG4 WILD FIRE SERVICES	09/07	STEVE KURVAINK	3	BASE CAMP/0600	BASE CAMP/1800	
E-257 ENG5 METHOW RIVER WILD FIRE	09/07	ALEX WHITMAN	3	BASE CAMP/0600	BASE CAMP/1800	
E-16C WTS2 S PEND OREILLE T33	09/08	PAUL HAA	1	BASE CAMP/0600	BASE CAMP/1800	
E-136 WTS2 OVERWATCH	09/08	ANDY ROMERO	1	BASE CAMP/0600	BASE CAMP/1800	
E-201 DOZ3 HAVILLAH LOGGING CO	08/30	DAVID GOYETTE	2	BASE CAMP/0600	BASE CAMP/1800	
E-12C DOZ2 KENNETH & DIANE SASSE	09/01	BURT SASSE	2	BASE CAMP/0600	BASE CAMP/1800	
E-29C DOZ4 GASHO & GASHO	08/31	ANDY GASHO	1	BASE CAMP/0600	BASE CAMP/1800	
8. Division/Group Communication Summary						
Function	Channel	RX Frequency N/W	RX Tone/NAC	TX Frequency N/W	TX Tone/NAC	Mode
COMMAND	1	170.0625	114.8	162.1750	114.8	A
COMMAND	2	170.3125	114.8	167.8375	114.8	A
COMMAND	3	170.4500	114.8	168.1000	114.8	A
TACTICAL	10	166.7750	114.8	166.7750	114.8	A
AIR TO GROUND	13	170.2625		170.2625		A
9. Prepared By (Resource Unit Leader)			Approved By (Planning Section Chief)		Date	Time
JILL JOHNSON			MARGE HUTCHINSON		08/27/2021	2000

Division/Group Assignment List (ICS 204 WF)
Controlled Unclassified Information//Basic

1. Incident Name:			3.			
WALKER CREEK & CHICKADEE CREEK			Branch:		Division/Group	
2. Operational Period: DAY/NIGHT			III		C	
Date/Time From: 08/28/2021 0600	SAT	Date/Time To: 08/29/2021 0600				
4. Operations Personnel						
OPERATIONS CHIEF		TONY ENGEL; AARON ROWE JEROMY WILSON (T)		BRANCH DIRECTOR		BEAU KIDD
SAFETY OFFICER		TROY CORN; JACK CATES		DIVISION/GROUP SUPERVISOR		BOB HINDS
5. Resources Assigned this Period						
Strike Team / Task Force / Resource Designator		LWD	Leader	Number Persons	Drop Off PT./Time	Pick Up PT./Time
E-23C GRD DOUBLE A LOGGING		08/31	TIM ACORD	1	BASE CAMP/0600	BASE CAMP/1800
E-14C EXCA WILL LOGGING & CONSTR		09/04	GARY WILLER SR	1	BASE CAMP/0600	BASE CAMP/1800
E-15C EXCA GASHO & GASHO		09/03	NICK MCCULLUM	2	BASE CAMP/0600	BASE CAMP/1800
E-17C FEL1 RIDGELINE FORESTRY		09/07	DARREN GOETZ	2	BASE CAMP/0600	BASE CAMP/1800
E-202 FEL1 HAVILLAH LOGGING		08/30	TOM KERSHNER	1	BASE CAMP/0600	BASE CAMP/1800
E-26 SKG1 WYEAST FORESTRY MANAGEMENT		08/30	BOYD GOLDFINCH	2	BASE CAMP/0600	BASE CAMP/1800
E-18C SKD2 RIDGELINE FORESTRY		08/30	MICHAEL GOETZ	2	BASE CAMP/0600	BASE CAMP/1800
E-21C SKD2 DOUBLE A LOGGING 1		09/08	RYAN HENDERSON	1	BASE CAMP/0600	BASE CAMP/1800
E-205 SKD2 HAVILLAH LOGGING		08/30	BRANDON SUTTON	1	BASE CAMP/0600	BASE CAMP/1800
E-204 MAST HAVILLAH LOGGIN		08/30	RICK CLOUGH	1	BASE CAMP/0600	BASE CAMP/1800
E-55 AMBU PEND OREILLE AMBU 2 (ALS)		08/27	HASTINGS	2	BASE CAMP/0600	BASE CAMP/1800
O-273 EMPF		09/06	KEVIN SMITH	1	BASE CAMP/0600	BASE CAMP/1800
O-160 EMTF		09/01	MARA LANDRUM	1	BASE CAMP/0600	BASE CAMP/1800
8. Division/Group Communication Summary						
Function	Channel	RX Frequency N/W	RX Tone/NAC	TX Frequency N/W	TX Tone/NAC	Mode
COMMAND	1	170.0625	114.8	162.1750	114.8	A
COMMAND	2	170.3125	114.8	167.8375	114.8	A
COMMAND	3	170.4500	114.8	168.1000	114.8	A
TACTICAL	10	166.7750	114.8	166.7750	114.8	A
AIR TO GROUND	13	170.2625		170.2625		A
9. Prepared By (Resource Unit Leader)			Approved By (Planning Section Chief)		Date	Time
JILL JOHNSON			MARGE HUTCHINSON		08/27/2021	2000

Division/Group Assignment List (ICS 204 WF)

Controlled Unclassified Information//Basic

1. Incident Name:			3.			
WALKER CREEK & CHICKADEE CREEK			III	C		
2. Operational Period: DAY/NIGHT						
Date/Time From: 08/28/2021 0600 SAT	Date/Time To: 08/29/2021 0600 SUN					
4. Operations Personnel						
OPERATIONS CHIEF	TONY ENGEL; AARON ROWE JEROMY WILSON (T)			BRANCH DIRECTOR	BEAU KIDD	
SAFETY OFFICER	TROY CORN; JACK CATES			DIVISION/GROUP SUPERVISOR	BOB HINDS	
5. Resources Assigned this Period						
Strike Team / Task Force / Resource Designator	LWD	Leader	Number Persons	Drop Off PT./Time	Pick Up PT./Time	
6. Control Operations/Work Assignments:						
<p>TASK: Secure primary firelines by constructing direct lines where possible, and burning small blocks when conditions allow. PURPOSE: Minimize acres burned with the best chances of success for containing the fire. END STATE: Fireline in the correct location with the best chances of success for containing the fire.</p> <p>TASK: Complete road prep and identification of alternate and contingency fireline locations. PURPOSE: Identify fireline placement locations. END STATE: Fireline with the highest probability of success is identified.</p>						
7. Special Instructions:						
Division breakout will be at DP-145.						
8. Division/Group Communication Summary						
Function	Channel	RX Frequency N/W	RX Tone/NAC	TX Frequency N/W	TX Tone/NAC	Mode
COMMAND	1	170.0625	114.8	162.1750	114.8	A
COMMAND	2	170.3125	114.8	167.8375	114.8	A
COMMAND	3	170.4500	114.8	168.1000	114.8	A
TACTICAL	10	166.7750	114.8	166.7750	114.8	A
AIR TO GROUND	13	170.2625		170.2625		A
9. Prepared By (Resource Unit Leader)			Approved By (Planning Section Chief)		Date	Time
JILL JOHNSON			MARGE HUTCHINSON		08/27/2021	2000

Division/Group Assignment List (ICS 204 WF)
Controlled Unclassified Information//Basic

1. Incident Name:			3.			
WALKER CREEK & CHICKADEE CREEK			Branch:		Division/Group	
2. Operational Period: DAY/NIGHT			III		K	
Date/Time From: 08/28/2021 0600 SAT	Date/Time To: 08/29/2021 0600 SUN					
4. Operations Personnel						
OPERATIONS CHIEF		TONY ENGEL; AARON ROWE JEROMY WILSON (T)		BRANCH DIRECTOR		BEAU KIDD
SAFETY OFFICER		TROY CORN; JACK CATES		DIVISION/GROUP SUPERVISOR		CHET DIERINGER
5. Resources Assigned this Period						
Strike Team / Task Force / Resource Designator		LWD	Leader	Number Persons	Drop Off PT./Time	Pick Up PT./Time
O-435 SOF2		09/09	JOSH NORTHRUP	1	BASE CAMP/0600	BASE CAMP/1800
O-249 FMOD SWEDBERG CONTRACTING		08/30	KELLY COLTEN	2	BASE CAMP/0600	BASE CAMP/1800
C-67 HC2I SRV #12		08/29	JULIAN JACOBO	18	BASE CAMP/0600	BASE CAMP/1800
E-176 WTS2 BTNG WILDFIRE		08/28	LUKE JOHNSON	1	BASE CAMP/0600	BASE CAMP/1800
E-112 SKDS SOFTTRACK ATTACK		09/08	PATRICK PRICE	2	BASE CAMP/0600	BASE CAMP/1800
E-140 SKDS SPENCER LOGGING LLC		09/05	COLE SPENCER	2	BASE CAMP/0600	BASE CAMP/1800
O-220 EMTF		09/04	RYAN SATCHER	1	BASE CAMP/0600	BASE CAMP/1800
6. Control Operations/Work Assignments:						
TASK: Secure fire line within its existing footprint, mop up as necessary to prevent fire escape. PURPOSE: Protect property and natural resources, outside fire footprint. END STATE: Fire is contained. Structures and private property are no longer threatened.						
7. Special Instructions:						
Division breakout will be at breezeway.						
8. Division/Group Communication Summary						
Function	Channel	RX Frequency N/W	RX Tone/NAC	TX Frequency N/W	TX Tone/NAC	Mode
COMMAND	1	170.0625	114.8	162.1750	114.8	A
COMMAND	2	170.3125	114.8	167.8375	114.8	A
COMMAND	3	170.4500	114.8	168.1000	114.8	A
TACTICAL	7	168.2000	114.8	168.2000	114.8	A
AIR TO GROUND	13	170.2625		170.2625		A
9. Prepared By (Resource Unit Leader)			Approved By (Planning Section Chief)		Date	Time
JILL JOHNSON			MARGE HUTCHINSON		08/27/2021	2000

Division/Group Assignment List (ICS 204 WF)
Controlled Unclassified Information//Basic

1. Incident Name:				3.		
WALKER CREEK & CHICKADEE CREEK				Branch: III	Division/Group O	
2. Operational Period: DAY/NIGHT						
Date/Time From: 08/28/2021 0600 SAT		Date/Time To: 08/29/2021 0600 SUN				
4. Operations Personnel						
OPERATIONS CHIEF		TONY ENGEL; AARON ROWE JEROMY WILSON (T)		BRANCH DIRECTOR		BEAU KIDD
SAFETY OFFICER		TROY CORN; JACK CATES		DIVISION/GROUP SUPERVISOR		ADAM ZIEGLER SAM STEINSHOUER (T)
5. Resources Assigned this Period						
Strike Team / Task Force / Resource Designator	LWD	Leader	Number Persons	Drop Off PT./Time	Pick Up PT./Time	
O-435 SOFR	09/09	JOSH NORTHRUP	1	BASE CAMP/0600	BASE CAMP/1800	
O-359 TFLD (T)	09/06	RYAN ROMERO	1	BASE CAMP/0600	BASE CAMP/1800	
O-376 TFLD	09/05	BENNY MENDOZA	1	BASE CAMP/0600	BASE CAMP/1800	
O-432 HEQB	09/09	DAVID MORRILL	1	BASE CAMP/0600	BASE CAMP/1800	
O-9001 HEQB (LOAN)	08/30	ANDY TOWNSEND	1	BASE CAMP/0600	BASE CAMP/1800	
O-250 FMOD FALLER MODULE	08/30	WADE GIGUERE	2	BASE CAMP/0600	BASE CAMP/1800	
C-70 HC2I UMA #1	08/31	NICK LACEY	18	BASE CAMP/0600	BASE CAMP/1800	
C-71 HC2 TORRES CONTRACTING CREW-11	09/01	EMILIO MELGAREJO	20	BASE CAMP/0600	BASE CAMP/1800	
C-81 HC2 LAVA RIVER FORESTRY 4	09/09	JOSH MARTINEZ	20	BASE CAMP/0600	BASE CAMP/1800	
C-9003 HC2I HIGHLANDS (LOAN)		SETH SCHERTENLEIB	19	BASE CAMP/0600	BASE CAMP/1800	
E- ENG5 DNR ENG (LOAN)			3	BASE CAMP/0600	BASE CAMP/1800	
E- ENG5 DNR ENG (LOAN)			3	BASE CAMP/0600	BASE CAMP/1800	
E- ENG5 DNR ENG (LOAN)			3	BASE CAMP/0600	BASE CAMP/1800	
E- ENG5 DNR ENG (LOAN)			3	BASE CAMP/0600	BASE CAMP/1800	
E- ENG5 DNR ENG (LOAN)			3	BASE CAMP/0600	BASE CAMP/1800	
8. Division/Group Communication Summary						
Function	Channel	RX Frequency N/W	RX Tone/NAC	TX Frequency N/W	TX Tone/NAC	Mode
COMMAND	1	170.0625	114.8	162.1750	114.8	A
COMMAND	2	170.3125	114.8	167.8375	114.8	A
COMMAND	3	170.4500	114.8	168.1000	114.8	A
TACTICAL	8	168.6000	114.8	168.6000	114.8	A
AIR TO GROUND	13	170.2625		170.2625		A
9. Prepared By (Resource Unit Leader)			Approved By (Planning Section Chief)		Date	Time
JILL JOHNSON			MARGE HUTCHINSON		08/27/2021	2000

Division/Group Assignment List (ICS 204 WF)
Controlled Unclassified Information//Basic

1. Incident Name:				3.		
WALKER CREEK & CHICKADEE CREEK				Branch: III	Division/Group O	
2. Operational Period: DAY/NIGHT						
Date/Time From: 08/28/2021 0600 SAT		Date/Time To: 08/29/2021 0600 SUN				
4. Operations Personnel						
OPERATIONS CHIEF		TONY ENGEL; AARON ROWE JEROMY WILSON (T)		BRANCH DIRECTOR		BEAU KIDD
SAFETY OFFICER		TROY CORN; JACK CATES		DIVISION/GROUP SUPERVISOR		ADAM ZIEGLER SAM STEINSHOUER (T)
5. Resources Assigned this Period						
Strike Team / Task Force / Resource Designator	LWD	Leader	Number Persons	Drop Off PT./Time	Pick Up PT./Time	
E-6C WTS2 TOLLEFSON CONSTR	09/06	EVAN BEVIER	1	BASE CAMP/0600	BASE CAMP/1800	
E-172 WTS2 SC RIVERS LMS, 93-102370	08/27	TIM SERIVER	1	BASE CAMP/0600	BASE CAMP/1800	
E-26C DOZ3 DOUBLE A LOGGING	08/29	TYLER ACORD	1	BASE CAMP/0600	BASE CAMP/1800	
E-27C DOZ3 WILL LOGGING & CONSTR	08/31	GARY WILL JR	1	BASE CAMP/0600	BASE CAMP/1800	
E-24C EXCA DOUBLE A LOGGING	08/29	JERIMIAH BOARDWELL	1	BASE CAMP/0600	BASE CAMP/1800	
E-25C EXCA DOUBLE A LOGGING	09/09	TOM ACORD	1	BASE CAMP/0600	BASE CAMP/1800	
E-7C FEL1 DOUBLE A LOGGING	09/10	BRIAN ACORD	1	BASE CAMP/0600	BASE CAMP/1800	
E-22C SKD2 DOUBLE A LOGGING	09/10	RYAN ANDERSON	1	BASE CAMP/0600	BASE CAMP/1800	
E-138 SKG1 SOFT TRACK ATTACK	09/04	JOSH COVEY	2	BASE CAMP/0600	BASE CAMP/1800	
E-197 SKG3 TUNK CREEK LLC	09/04	DYLAN GREEN	2	BASE CAMP/0600	BASE CAMP/1800	
E-203 MAST HAVILLAH LOGGIN	08/30	TIM KERSHNER	1	BASE CAMP/0600	BASE CAMP/1800	
O-313.61 EMPF	08/29	RONALD LOWRY	1	BASE CAMP/0600	BASE CAMP/1800	
8. Division/Group Communication Summary						
Function	Channel	RX Frequency N/W	RX Tone/NAC	TX Frequency N/W	TX Tone/NAC	Mode
COMMAND	1	170.0625	114.8	162.1750	114.8	A
COMMAND	2	170.3125	114.8	167.8375	114.8	A
COMMAND	3	170.4500	114.8	168.1000	114.8	A
TACTICAL	8	168.6000	114.8	168.6000	114.8	A
AIR TO GROUND	13	170.2625		170.2625		A
9. Prepared By (Resource Unit Leader)			Approved By (Planning Section Chief)		Date	Time
JILL JOHNSON			MARGE HUTCHINSON		08/27/2021	2000

Division/Group Assignment List (ICS 204 WF)
Controlled Unclassified Information//Basic

1. Incident Name:			3.			
WALKER CREEK & CHICKADEE CREEK			Branch:		Division/Group	
2. Operational Period: DAY/NIGHT			III		O	
Date/Time From: 08/28/2021 0600 SAT	Date/Time To: 08/29/2021 0600 SUN					
4. Operations Personnel						
OPERATIONS CHIEF		TONY ENGEL; AARON ROWE JEROMY WILSON (T)		BRANCH DIRECTOR		BEAU KIDD
SAFETY OFFICER		TROY CORN; JACK CATES		DIVISION/GROUP SUPERVISOR		ADAM ZIEGLER SAM STEINSHOUER (T)
5. Resources Assigned this Period						
Strike Team / Task Force / Resource Designator		LWD	Leader	Number Persons	Drop Off PT./Time	Pick Up PT./Time
6. Control Operations/Work Assignments:						
<p>TASK: Secure direct firelines from O/C Division Break to DP 101. PURPOSE: Keep fire from impacting values at risk. END STATE: Fireline secured to a point chance of escape is unlikely.</p> <p>TASK: Complete road prep and identification of alternate and contingency fireline locations from Katasa Road to DP 101. PURPOSE: Identify fireline placement. END STATE: Fireline with the highest probability of success is identified.</p>						
7. Special Instructions:						
Division breakout will be at DP-140.						
8. Division/Group Communication Summary						
Function	Channel	RX Frequency N/W	RX Tone/NAC	TX Frequency N/W	TX Tone/NAC	Mode
COMMAND	1	170.0625	114.8	162.1750	114.8	A
COMMAND	2	170.3125	114.8	167.8375	114.8	A
COMMAND	3	170.4500	114.8	168.1000	114.8	A
TACTICAL	8	168.6000	114.8	168.6000	114.8	A
AIR TO GROUND	13	170.2625		170.2625		A
9. Prepared By (Resource Unit Leader)			Approved By (Planning Section Chief)		Date	Time
JILL JOHNSON			MARGE HUTCHINSON		08/27/2021	2000

Division/Group Assignment List (ICS 204 WF)
Controlled Unclassified Information//Basic

1. Incident Name:			3.			
WALKER CREEK & CHICKADEE CREEK			Branch:		Division/Group	
2. Operational Period: DAY/NIGHT					NIGHT	
Date/Time From: 08/28/2021 0600 SAT		Date/Time To: 08/29/2021 0600 SUN				
4. Operations Personnel						
OPERATIONS CHIEF		TONY ENGEL; AARON ROWE JEROMY WILSON (T)		BRANCH DIRECTOR		
SAFETY OFFICER		TROY CORN; JACK CATES		DIVISION/GROUP SUPERVISOR		DANIEL GLEASON SUSAN GREENLEAF (T)
5. Resources Assigned this Period						
Strike Team / Task Force / Resource Designator		LWD	Leader	Number Persons	Drop Off PT./Time	Pick Up PT./Time
O-316 SOF2 (T)		08/29	DEAN KIEFER	1	BASE CAMP/1800	BASE CAMP/0600
O-224 STEN		08/28	NATHAN DRAKE	1	ICP/1800	ICP/0800
O-304 STEN (T)		08/31	PEDRO OLAGUE	1	ICP/1800	ICP/0800
E-14 ENG5 J3 CONTRACTING		08/18	TAYLOR EASLEY	3	ICP/1800	ICP/0800
E-19 ENG5 LL MEADOW WILDFIRE		09/03	DAMIAN RAMON	3	ICP/1800	ICP/0800
E-116 ENG6 TORCH FIRE AND SECURITY		09/08	TRINITY KRIVANEC	3	ICP/1800	ICP/0800
E-115 ENG3 OUTBACK FIREFIGHTING		08/25	SEAN WEST	3	ICP/1800	ICP/0800
E-122 ENG6 SMITHFIELD FD E640		09/01	DUSTIN HOOTON	2	ICP/1800	ICP/0800
E-167 ENG3 BENTON FD.1 ENG 1135		08/28	BROCK LONG	3	ICP/1800	ICP/0800
E-168 ENG5 BRUSH 1-2 WEST THURSTON		08/28	BLAKE KALEIWAHEA	2	ICP/1800	ICP/0800
E-170 ENG3 EAST OLYMPIA FIRE DISTRICT 6		08/28	DEVIN PARVINEN	3	ICP/1800	ICP/0800
E-171 ENG6 THURSTON CO BR 95		08/28	HEATH HODGE	2	ICP/1800	ICP/0800
E-156 WTS2 H & H ENTERPRISES		09/03	MARK ANDERSON	1	ICP/1800	ICP/0800
E-92 DOZ2 PRICE EXCAVATION LLC		09/03	JAMES PRICE	2	ICP/1800	ICP/0800
E-114 SKDS SOFT TRACK ATTACK		08/30	STEVE BONNER	2	ICP/1800	ICP/0800
8. Division/Group Communication Summary						
Function	Channel	RX Frequency N/W	RX Tone/NAC	TX Frequency N/W	TX Tone/NAC	Mode
COMMAND	1	170.0625	114.8	162.1750	114.8	A
COMMAND	2	170.3125	114.8	167.8375	114.8	A
COMMAND	3	170.4500	114.8	168.1000	114.8	A
TACTICAL	10	166.7750	114.8	166.7750	114.8	A
AIR TO GROUND	13	170.2625		170.2625		A
AIR TO GROUND	15	168.1375		168.1375		A
9. Prepared By (Resource Unit Leader)			Approved By (Planning Section Chief)		Date	Time
JILL JOHNSON			MARGE HUTCHINSON		08/27/2021	2000

Division/Group Assignment List (ICS 204 WF)
Controlled Unclassified Information//Basic

1. Incident Name:				3.		
WALKER CREEK & CHICKADEE CREEK				Branch:	Division/Group NIGHT	
2. Operational Period: DAY/NIGHT						
Date/Time From: 08/28/2021 0600 SAT		Date/Time To: 08/29/2021 0600 SUN				
4. Operations Personnel						
OPERATIONS CHIEF		TONY ENGEL; AARON ROWE JEROMY WILSON (T)		BRANCH DIRECTOR		
SAFETY OFFICER		TROY CORN; JACK CATES		DIVISION/GROUP SUPERVISOR		DANIEL GLEASON SUSAN GREENLEAF (T)
5. Resources Assigned this Period						
Strike Team / Task Force / Resource Designator	LWD	Leader	Number Persons	Drop Off PT./Time	Pick Up PT./Time	
6. Control Operations/Work Assignments:						
TASK: Patrol and mop up areas that threaten values at risk. PURPOSE: Protect values at risk. END STATE: Fire does not pose a threat to any critical values within or adjacent to the division.						
7. Special Instructions:						
Division breakout will be at breezeway.						
8. Division/Group Communication Summary						
Function	Channel	RX Frequency N/W	RX Tone/NAC	TX Frequency N/W	TX Tone/NAC	Mode
COMMAND	1	170.0625	114.8	162.1750	114.8	A
COMMAND	2	170.3125	114.8	167.8375	114.8	A
COMMAND	3	170.4500	114.8	168.1000	114.8	A
TACTICAL	10	166.7750	114.8	166.7750	114.8	A
AIR TO GROUND	13	170.2625		170.2625		A
AIR TO GROUND	15	168.1375		168.1375		A
9. Prepared By (Resource Unit Leader)			Approved By (Planning Section Chief)		Date	Time
JILL JOHNSON			MARGE HUTCHINSON		08/27/2021	2000

AIR OPERATIONS SUMMARY

Controlled Unclassified Information//Basic

PREPARED BY: Greg Reser AOB (t)

PREPARED DATE/TIME: 8/27/2021 1900

1. INCIDENT NAME: Walker Cr. /Chickadee Cr.		2. OPERATIONAL PERIOD DATE: 8/28/21 START TIME: 0800 END TIME: 2000 SUNRISE: 0609 SUNSET: 1949 Pumpkin 2019				
3. REMARKS (Safety Notes, Hazards, Air Operations Special Equipment, etc.):				4. Ready Alert aircraft: Order ALS air ambulance (Lifeflight) through NEWICC Dispatch. Closest ALS helicopters are out of Brewster, WA with a 25 min flight time to the Walker fire. <u>Special remarks:</u> Wenatchee Short Haul 3JR at Lake Chelan, WA Airport. Response time roughly 45min to incident. Order thru AOB. Review Military Training Route activity and status each morning prior to missions. <u>Aviation Support Equipment:</u> WTS2 E-227 @ Omak Helibase Helibase Support Trailer E-36 @ Omak Helibase <u>Email cost to:</u> WalkerSpur.Aviation@gmail.com		
5. Helibase location Omak (OMK) 48-27.864617N 119-31.083250W Elev: 1,304' Base Phone: 360-489-7654 Unicom: OMK: 122.8 Tonasket W01: 122.9		6. TFR information Walker 1/9445 9NM SFC-9500FT Chickadee 1/9449 7NM SFC-9500FT	7. FIXED WING		SEATS/Fireboss: Available out of Omak. Order through NEWICC. ATGS Platform: Order as needed through NEWICC.	
8. PERSONNEL		Phone	9. FREQUENCIES		FM	AM
AOBD – Mike Davis		509-699-9350	A/G Walker Pri		168.1375	
AOBD (t) - Greg Reser		307-350-2202	A/G Walker Sec	169.5625		
HEBM – Eric Bader		303-704-1164	A/G Chickadee Pri	170.2625		
			TFR 1/9445 Walker		118.125	
			A/A Walker Rotor		126.3500	
			TFR 1/9449 Chickadee		118.775	
NE Washington Dispatch (NEWICC)		509-685-6900	A/A Chickadee Rotor		126.6250	
			A/G Ignitions Discreet	167.8375		
Colville UAO Ben Renfro		541-589-0452	DNR Flight Follow	151.3475 Tx(136.5)		
			Air Guard	168.6250 Tx(110.9)		

10. Helicopters	TY	MAKE/MODEL	BASE	START	AVAIL	REMARKS
N24CK (A-183) / Gelhausen	1	S-61A	OMK	0800	0830	EU / Tanked
N7CU (A-174) / Hogue	1	CH-47D	OMK	0800	0830	EU / Bucket
N58HA (A-199) / Olson	2	UH-1	OMK	0800	0830	CWN / Restricted
N12HX (A-204) / Lookingback	3	Bell 407	OMK	0800	0830	EU / HMGB +9

Mission Requests:

Air Attack: Requested through NEWICC as needed.

Lead Plane/Airtankers: Requested through NEWICC as needed.

Helicopters: Requested through Omak Helibase.

Approved By: Mike Davis AOB

INCIDENT RADIO COMMUNICATIONS PLAN (ICS 205)

Controlled Unclassified Information//Basic

1. Incident Name:	2. Date/Time Prepared:	3. Operational Period: DAY/NIGHT	
WALKER CREEK & CHICKADEE CREEK	Date: 08/27/2021 Time: 2000	Date/Time From: 08/28/2021 0600 SAT	Date/Time To: 08/29/2021 0600 SUN

4. Basic Radio Channel Use:

Zone Group	Ch #	Function	Channel Name/Trunked Radio System Talkgroup	Assignment	RX Freq	RX Tone/NAC	TX Freq	TX Tone/NAC	Mode (A,D, or M)	Remarks
	1	COMMAND	CMD1	ALL RESOURCES	170.0625	114.8	162.1750	114.8	A	LINKED TO CMD 2 & CMD 3
	2	COMMAND	CMD2	ALL RESOURCES	170.3125	114.8	167.8375	114.8	A	LINKED TO CMD1 & CMD 3
	3	COMMAND	CMD3	ALL RESOURCES	170.4500	114.8	168.1000	114.8	A	LINKED TO CMD1 & CMD2
	4	COMMAND	CMD 4	ALL RESOURCES	172.5375	114.8	163.5500	114.8	A	NOT IN SERVICE
	5	COMMAND	DNR TON	ALL RESOURCES	159.3675	118.8	151.2575	156.7	A	DNR TONASKET DISPATCH
	6	TACTICAL	TAC 6	DIV A	168.0500	114.8	168.0500	114.8	A	NIFC TAC
	7	TACTICAL	TAC 7	DIV F/K	168.2000	114.8	168.2000	114.8	A	NIFC TAC
	8	TACTICAL	TAC 8	DIV H/O	168.6000	114.8	168.6000	114.8	A	NIFC TAC
	9	TACTICAL	TAC 9	DIV T	166.7250	114.8	166.7250	114.8	A	NIFC TAC
	10	TACTICAL	TAC 10	DIV C/NIGHT	166.7750	114.8	166.7750	114.8	A	NIFC TAC
	11	TACTICAL	TAC 11	DIV Q	168.2500	114.8	168.2500	114.8	A	NIFC TAC
	12	TACTICAL	RED NET	ALL RESOURCES	153.8300		153.8300	156.7	A	EMS AMBU/AIR UNITS
	13	AIR TO GROUND	A/G CHICK	A/G CHICKADEE	170.2625		170.2625		A	NIFC A/G
	14	AIR TO GROUND	A/G SECONDARY	A/G SECONDARY	169.5625		169.5625		A	NIFC A/G
	15	AIR TO GROUND	A/G WALKER	A/G WALKER	168.1375		168.1375		A	NIFC A/G
	16	AIR GUARD	AIRGUARD	ALL RESOURCES	168.6250		168.6250	110.9	A	EMERGENCY USE ONLY

5. Special Instructions: LAST CLOSE: WALKER081721. ON THE LABEL OF KING RADIO; FOR DPH PRESS AND HOLD THE # KEY AND LOOK AT DISPLAY.

6. Prepared By (Communications Unit Leader)	Name: MISSY PARKER	Signature: <i>Missy Parker</i>
ICS 205	IAP Page	Date/Time: 08/27/2021 2000

Controlled Unclassified Information//Basic

FINAL

WALKER CREEK/CHICKADEE CREEK/SPUR FIRE DEMOB LIST

Saturday August 28, 2021

DEMOB INSTRUCTIONS

Paperless and electronic demobilization will be used to the extent possible for all resources. **PLEASE LOOK closely at the Fire Name and Resource Number.** All finance documents will be emailed and signed virtually. Ensure all Final CTR's and Shift Tickets have been submitted to Finance the night before your demob day.

DEMOB STEPS

(Must Be Done In Order)

1. If you have any items checked out by Supply and Communications, proceed to those areas to turn in equipment. If you don't have any items checked out, proceed to NEXT STEP.
2. If you were inspected upon arrival or need a No Claims/No Comp receipt, check out with Ground Support. If this does not apply, proceed to NEXT STEP.
3. Call Finance at 509-423-6011 or 509-433-1115 or 509-531-7418 to finalize paperwork.
4. Call DMOB at 206-473-1425 or 509-432-6143 to complete the process to be released.

*** CHICKADEE CREEK ***

EQUIPMENT

E-1	0700	DOZ4	TIMBERLINE CONSTRUCTION
-----	------	------	-------------------------

*** WALKER CREEK ***

CREWS

C-62	0700	HC2I	NAVAJO SCOUTS 1
------	------	------	-----------------

EQUIPMENT

E-213	0600	ENG4	IDAHO E441
E-172	0630	WTS2	SC RIVERS LMS
E-210	0630	MAST	AFM E-210
E-174	0645	WTS2	STOTTS CONSTRUCTION

OVERHEAD

O-24	0600	FMOD	FIREFLY
O-191	0615	FMOD	LL MEADOW WILDFIRE
O-193	0615	FMOD	BROTHERS FIRE
O-192	0615	FMOD	LL MEADOW WILDFIRE
O-212	0630	BCMG	CHAVEZ, JOSE

THERE WILL BE NO ADDITIONAL CREW SWAPS MOVING FORWARD AS THE EQUIPMENT WILL JUST TIME OUT WITH CURRENT OPERATOR. EXTENSIONS WILL BE ALLOWED WITH THE APPROVAL OF OPERATIONS.



Human Resource Message



Walker Creek and Chickadee Creek Fires, August 28, 2021

As a NW Fire Management Team, we overcome challenges because we are strong and because we are a professional team focused on putting out fires. We know we cannot do this alone therefore, we bring in other skilled professionals, you, to aid us in this task.

On this assignment, we are facing another challenge which is COVID-19. We all have the skills to overcome this challenge however, we all must consciously apply those skills to put COVID-19 out. Those skills involve social distancing, washing our hands, and wearing masks. This becomes a “win-win.” We put out the fire and we help stop the spread of a communicable disease. With everyone’s help, we can achieve this goal.

We are getting reports from the community that fire personnel are not wearing their masks when doing business in the community. We ask you to:

PLEASE...WEAR YOUR MASK.

This is just another way of showing mutual respect. Not only will you take care of yourself, but you will also be helping to take care of others in a most respectful way. Let us all do our part in treating each other with dignity and respect throughout this fire assignment.

Quote for the day:



Give respect Get respect

Thank you, be safe and have a good day!

Susie Manezes, NW-Team 12- Human Resource Specialist (HRSP)
Contact Number: 602-571-9327. smanezes@blm.gov

Walker Creek Fire
Finance

Chickadee Creek
Fire Finance



Finance Message

2021.walkercreek.finance@firenet.gov

2021.chickadeecreek.finance@firenet.gov

(509) 423-6011 FSC2 (T) Christina

(509) 433-1115 TIME Unit Carol

(509) 531-7418 Equipment Mark

(509) 675-5821 ICPI Rob

Finance is all virtual. We will be happy to take all your paperwork, CTRs and Shift tickets all by email or text.

Please be patient with us as we process your time for demob. Our finance section is working as quick as we can to process your time. Most of the CTRs and Shift Tickets that the outgoing team was taking never made it to the email, so we might have to ask for your paperwork again. We will do our best to support you anyway we can.

If you have questions, please call one of the above numbers.

Make sure that your CTR and ST have the correct fire that you are working on.

Incident Maps

How to Download Maps in Avenza

If you're cell signal is poor you may need to connect to a wifi to download maps. However sometimes being connected to a wifi can slow map downloads. You'll just have to find out what works best.

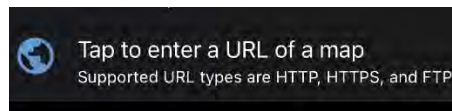
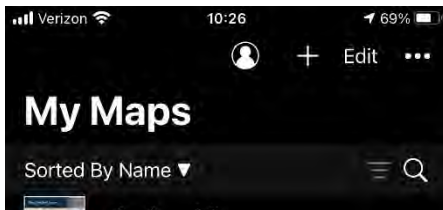
Method 1: From a browser - If you have a good cell or wifi signal

1. Tap on the desired map link and wait for the preview. *If it fails to load, use method 2 instead*
2. Tap the 'send to' icon (square with up arrow)
3. Choose the Avenza app



Method 2: From Avenza direct – if you don't have a good cell or wifi signal

1. Tap and hold on the desired map link, then choose 'copy' to copy the direct URL to the map
2. Launch the Avenza app
3. When not in any map... Tap the + (plus) icon at the top of the screen
4. Choose the load from URL option (last choice)
5. Paste the direct URL to the map
6. Tap 'Done' ; the map will begin downloading



How to Send Map Updates to the Situation Unit

1. From within the map in Avenza, click the pin with three lines near the lower-right corner.
2. *iPhone:* In the lower right, click the square with up arrow. From the pop-up menu, choose Export to Others.
Android: In the lower right, click the circle with three lines. Click the pop-up circle with up arrow.
3. Set these options:
 - a. Filename – leave alone
 - b. Export Format – choose SHP, GPX or KML
 - c. Data – all features
 - d. Image size – no image
4. Click the Export button in the upper-right corner.
5. When the export is ready, choose your Mail application.
6. Email the update to 2021.walkercreek.situation@firenet.gov for the Walker Creek Fire map updates or 2021.chickadeecreek.situation@firenet.gov for the Chickadee Fire map updates.
7. If you have questions, call or text the Situation Unit at 360-584-3373.
8. Your email needs to include an explanation of the data and a contact phone number.

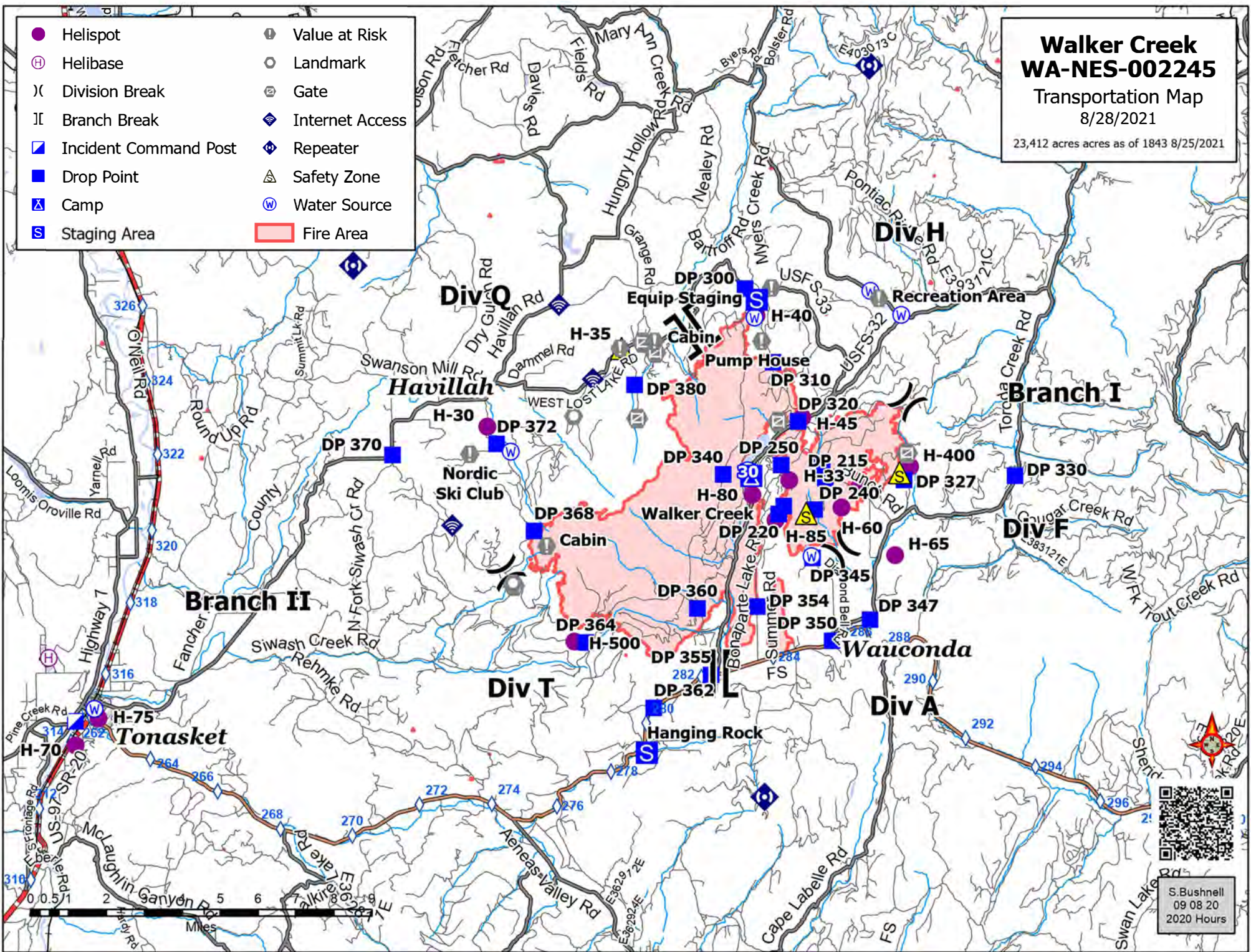
If all else fails draw your map update on your paper map, take a picture and it attach that to an email to the above addresses.

Walker Creek WA-NES-002245

Transportation Map
8/28/2021

23,412 acres as of 1843 8/25/2021

- | | |
|-------------------------|-------------------|
| ● Helispot | ⚠ Value at Risk |
| ⊕ Helibase | ⊙ Landmark |
| ⌋ Division Break | ⊞ Gate |
| ⌌ Branch Break | ⬢ Internet Access |
| ▣ Incident Command Post | ⬢ Repeater |
| ■ Drop Point | ⚠ Safety Zone |
| ⚓ Camp | Ⓜ Water Source |
| Ⓜ Staging Area | ■ Fire Area |



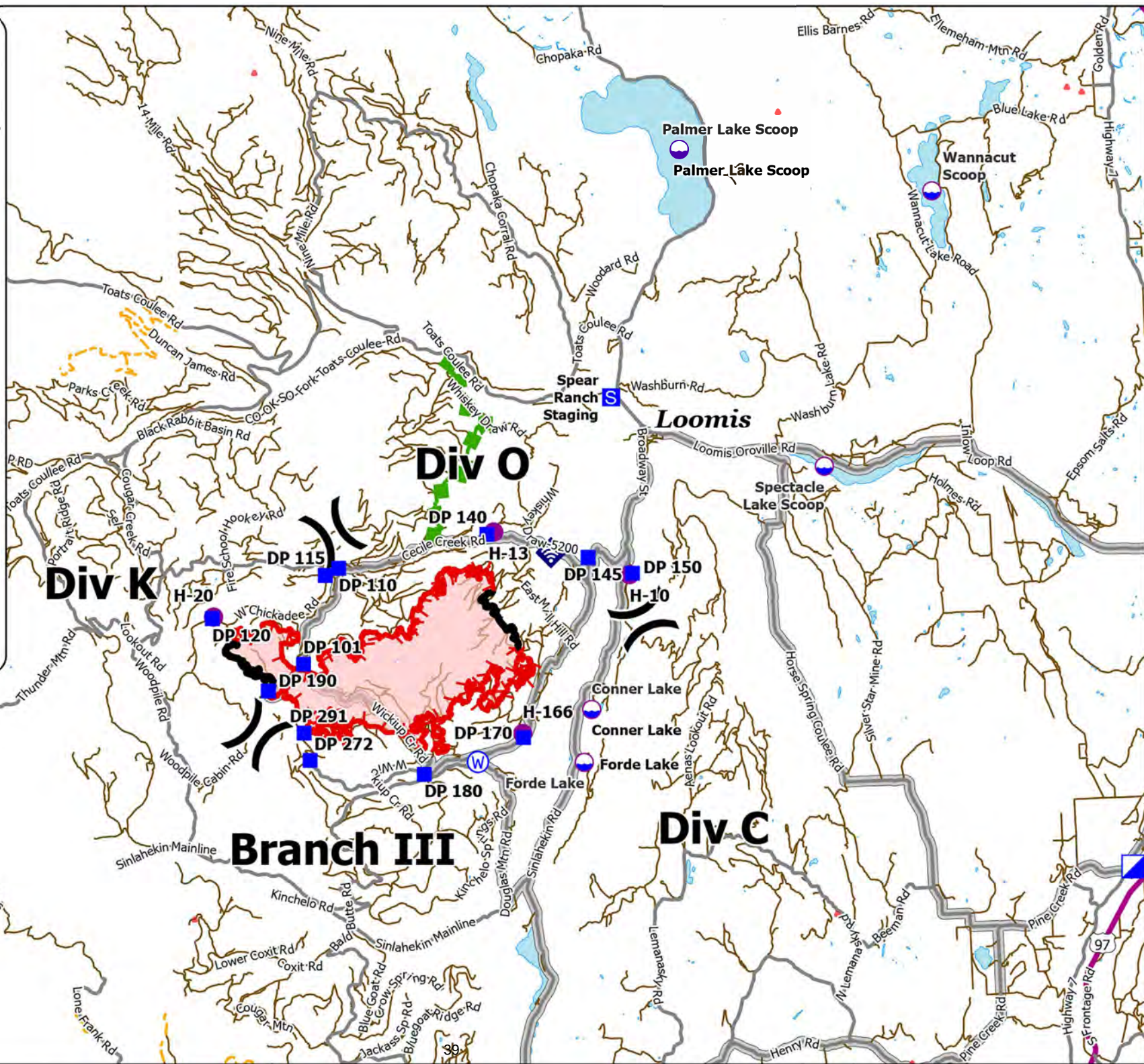
S. Bushnell
09 08 20
2020 Hours

Transportation
Chickadee Creek
 WA-NES-002310
 8/28/2021

5,199 acres as of 1945 8/24/2021 via IR



- Dip Site
- Helispot
- Division Break
- Drop Point
- Staging Area
- Internet Access
- Water Source
- Incident Command Post
- Wildfire Daily Fire Perimeter
- Primary Highway
- Secondary Highway
- Light-Duty Road
- Unimproved Road
- Road Closed
- Access Routes
- Escape Route
- Fire Edge
- Contained Line



WALKER CREEK/CHICKADEE FIRE COVID-19 MITIGATIONS

Supervisors are required to go over this list each morning with assigned resources- report any symptoms below to medical unit.

In the last 24 hours have you experienced:

- Cough more than expected?
- Shortness of breath or difficulty breathing?
- Fever? Chills?
- Muscle pain, outside your normal for firefighting?
- Sore throat?
- New loss of taste or smell?
- Fatigue, outside your normal for firefighting?
- Headache, outside your normal for firefighting?
- Congestion or runny nose, outside your normal for firefighting?
- Nausea or vomiting
- Diarrhea

** Take temperature with no-touch thermometer, if available **

- **All personnel are required to wear a mask in fire camp regardless of vaccination status, unless outdoors and able to maintain at least 6ft of distance at all times, alone in an enclosed space or actively engaged in firefighting on the fireline.**
- **Listen to radio briefings remotely.**
- **Observe 6ft Distancing whenever possible.**
- **Observe “Module as One” practices – only close contact with crew (engine, handcrew, etc.) that you live and work with all summer. Observe distancing and masking around everyone else. Do not co-mingle with other crews or “modules” in camp or on the line.**
- **Send crew representatives to pick up meals - masks must be worn in food lines.**
- **Wash hands frequently and disinfect high-traffic areas on a regular basis.**
- **Limit close contact between firefighters and the public to prevent exposure and spread.**



EMERGENCY PLAN INCIDENT WITHIN AN INCIDENT

ON SCENE INCIDENT COMMANDER

In the event of an accident or medical incident of any size, your primary responsibility is to ENSURE that the victim(s) receive prompt and effective Triage, Treatment, Extrication and Transport.

- **ENSURE THE MEDICAL INCIDENT REPORT IN THE INCIDENT ACTION PLAN IS BEING USED AND FOLLOWED- *IF DETERMINED TO BE A GREEN, DO NOT DECLARE EMERGENCY TRAFFIC AND ONLY COMPLETE LINE 1-4 ON MIR*.**
- Conduct size-up of the incident nature of accident, number type of resources involved, latitude and longitude location (DD°MMM.MM format): notify incident communications center and supervisor, request assistance as needed.
- Order and coordinate medical and support response to the accident.
- Evaluate special needs (law enforcement, haz mat, etc.).
- Clear the command frequency if medical emergency, coordinate with incident communications and air attack for air medical transportation needs.
- Preserve and photograph the scene for accident investigation.
- Remain aware of surroundings and the status of the main incident (delegate personnel to monitor the main fire) to ensure safety of medical treatment personnel.
- Until relieved, supervise and manage all personnel involved at the incident scene.

MEDICAL PLAN (ICS 206 WF)

20 Incident/Project Name		1. Operational Period						
Walker Creek Fire		August 28-29, 2021 0600-0600						
2. Ambulance Services								
Name	Complete Address	Phone	Advanced Life Support (ALS)					
			Yes	No				
Lifeline Ambulance	912 Koala Ave Omak, WA 98841	911 - Dispatch 509-663-8091	X					
3. Air Ambulance Services								
Name	Phone	Type of Aircraft & Capability						
Life Flight Network	800-232-0911	Bell 407 - Brewster						
Airlift Northwest	800-426-2430 or 911	Rotor in Wenatchee						
4. Hospitals								
Name Complete Address	Coordinate Standard Degrees Decimal Minutes DD° MM.MMM' N - Lat DD° MM.MMM' W - Long		Travel Time From Bonaparte		Phone	Helipad		Level of Care Facility
	Lat:	Long:	Air	Gnd		Yes	No	
North Valley Hospital 203 S Western Ave Tonasket, WA 98855	48°42.4549' N	119°26.3267' W	13 min	38 min	509-486-2151		X	Level 4 Trauma
Mid-Valley Hospital 912 Koala Ave Omak, WA 98841	48°23.8336' N	119°32.8758' W	24 Min	59 min	509-826-1760	X		Level 4 Trauma
Confluence Health Hospital (Central Washington Hospital) 1201 S Miller St. Wenatchee, WA 98801	47°24.4340' N	120°19.3664' W	1 Hr 12 min	2 Hr 48 min	509-662-1511	X		Level 2 Trauma
Harborview Medical 325 9 th Ave Seattle, WA 98104	47°36.1897' N	122°19.4759' W	2 Hr 22 min	5 Hr	541-222-6929	X		Level 1 Trauma Burn Center
5. Division Branch Group		Capability		Personnel				
Div A		Barwell EMTF Stevens Sheriff Ambulance (Ambo 1) Brittan						
Div F		Byrd EMPF						
Div H		Sewell EMPF						
Div Q		Bridges EMPF						
Div T		Marin EMPF						
Night Shift		Use Available Resources						
6. Prepared By (Medical Unit Leader)			7. Date/Time	8. Reviewed By (Safety Officer)		9. Date/Time		
Diana Braun, Lee Venning (t) <i>Diana Braun</i>			08/27/2021 1800	Troy Corn <i>Troy Corn</i>		08/27/2021 1800		

MEDICAL PLAN (ICS 206 WF)

20 Incident/Project Name		1. Operational Period				
Chickadee Creek Fire		August 28-29, 2021 0600-0600				
2. Ambulance Services						
Name	Complete Address	Phone	Advanced Life Support (ALS) Yes No			
Lifeline Ambulance	912 Koala Ave Omak, WA 98841	911 - Dispatch 509-663-8091	X			
3. Air Ambulance Services						
Name	Phone	Type of Aircraft & Capability				
Life Flight Network	800-232-0911	Bell 407 - Brewster				
Airlift Northwest	800-426-2430 or 911	Rotor in Wenatchee				
4. Hospitals						
Name Complete Address	Coordinate Standard Degrees Decimal Minutes DD° MM.MMM' N - Lat DD° MM.MMM' W - Long	Travel Time From Loomis Air Gnd		Phone	Helipad Yes No	Level of Care Facility
North Valley Hospital 203 S Western Ave Tonasket, WA 98855	Lat: 48°42.4549' N	8 min	22 min	509-486-2151	X	Level 4 Trauma
	Long: 119°26.3267' W					
Mid-Valley Hospital 912 Koala Ave Omak, WA 98841	Lat: 48°23.8336' N	20 Min	46 min	509-826-1760	X	Level 4 Trauma
	Long: 119°32.8758' W					
Confluence Health Hospital (Central Washington Hospital) 1201 S Miller St. Wenatchee, WA 98801	Lat: 47°24.4340' N	68 min	2 Hr 35 min	509-662-1511	X	Level 2 Trauma
	Long: 120°19.3664' W					
Harborview Medical 325 9 th Ave Seattle, WA 98104	Lat: 47°36.1897' N	1Hr 38 min	4 Hr 50 min	541-222-6929	X	Level 1 Trauma Burn Center
	Long: 122°19.4759' W					
5. Division Branch Group	Capability	Personnel				
Div C	Landrum EMTF Smith EMPF (UTV) Pend Oreille Ambulance (Ambo 2) Hastings					
Div K	Satcher EMTF					
Div O	Lowry EMPF					
Night Shift	Use Available Resources					
6. Prepared By (Medical Unit Leader)		7. Date/Time	8. Reviewed By (Safety Officer)		9. Date/Time	
Diana Braun, Lee Venning (t) <i>Diana Braun</i>		08/27/2021 1800	Troy Corn <i>Troy Corn</i>		08/27/2021 1800	

MEDICAL PLAN (ICS 206 WF)

Controlled Unclassified Information//Basic

Medical Incident Report

FOR A NON-EMERGENCY INCIDENT, WORK THROUGH CHAIN OF COMMAND TO REPORT AND TRANSPORT INJURED PERSONNEL AS NECESSARY.

FOR A MEDICAL EMERGENCY: IDENTIFY ON SCENE INCIDENT COMMANDER BY NAME AND POSITION AND ANNOUNCE "MEDICAL EMERGENCY" TO INITIATE RESPONSE FROM IMT COMMUNICATIONS/DISPATCH.

Use the following items to communicate situation to communications/dispatch.

1. CONTACT COMMUNICATIONS / DISPATCH (Verify correct frequency prior to starting report)

Ex: "Communications, Div. Alpha. Stand-by for Emergency Traffic."

2. INCIDENT STATUS: Provide incident summary (including number of patients) and command structure.

Ex: "Communications, I have a Red priority patient, unconscious, struck by a falling tree. Requesting air ambulance to Forest Road 1 at (Lat./Long.) This will be the Trout Meadow Medical, IC is TFLD Jones. EMT Smith is providing medical care."

Severity of Emergency / Transport Priority	<input type="checkbox"/> RED / PRIORITY 1 Life or limb threatening injury or illness. Evacuation need is IMMEDIATE <i>Ex: Unconscious, difficulty breathing, bleeding severely, 2° – 3° burns more than 4 palm sizes, heat stroke, disoriented.</i> <input type="checkbox"/> YELLOW / PRIORITY 2 Serious Injury or illness. Evacuation may be DELAYED if necessary. <i>Ex: Significant trauma, unable to walk, 2° – 3° burns not more than 1-3 palm sizes.</i> <input type="checkbox"/> GREEN / PRIORITY 3 Minor Injury or illness. Non-Emergency transport <i>Ex: Sprains, strains, minor heat-related illness.</i>	
Nature of Injury or Illness & Mechanism of Injury		<i>Brief Summary of Injury or Illness (Ex: Unconscious, Struck by Falling Tree)</i>
Transport Request		<i>Air Ambulance / Short Haul/Hoist Ground Ambulance / Other</i>
Patient Location		<i>Descriptive Location & Lat. / Long. (WGS84)</i>
Incident Name		<i>Geographic Name + "Medical" (Ex: Trout Meadow Medical)</i>
On-Scene Incident Commander		<i>Name of on-scene IC of Incident within an Incident (Ex: TFLD Jones)</i>
Patient Care		<i>Name of Care Provider (Ex: EMT Smith)</i>

3. INITIAL PATIENT ASSESSMENT: Complete this section for each patient as applicable (start with the most severe patient)

Patient Assessment: See IRPG page 106

Treatment:

4. TRANSPORT PLAN:

Evacuation Location (if different): (Descriptive Location (drop point, intersection, etc.) or Lat. / Long.) Patient's ETA to Evacuation Location:

Helispot / Extraction Site Size and Hazards:

5. ADDITIONAL RESOURCES / EQUIPMENT NEEDS:

Example: Paramedic/EMT, Crews, Immobilization Devices, AED, Oxygen, Trauma Bag, IV/Fluid(s), Splints, Rope rescue, Wheeled litter, HAZMAT, Extrication

6. COMMUNICATIONS: Identify State Air/Ground EMS Frequencies and Hospital Contacts as applicable

Function	Channel Name/Number	Receive (RX)	Tone/NAC *	Transmit (TX)	Tone/NAC *
COMMAND					
AIR-TO-GRND					
TACTICAL					

7. CONTINGENCY: Considerations: If primary options fail, what actions can be implemented in conjunction with primary evacuation method? Be thinking ahead.

8. ADDITIONAL INFORMATION: Updates/Changes, etc.

REMEMBER: Confirm ETA's of resources ordered. Act according to your level of training. Be Alert. Keep Calm. Think Clearly. Act Decisively.

Controlled Unclassified Information//Basic