

INCIDENT ACTION PLAN

Walker Creek / Chickadee Creek



August 29-30, 2021
Dayshift 0600-1800
Nightshift 1800-0600

Walker Creek Fire

WA-NES-002245

PNN7RL (1522)

WA state code: 221KPI

Chickadee Creek Fire

WA-NES-002310

PNN7WA (1522)

221-JFZ

BRIEFING Phone
(audio only)
[+1 929-336-2435](tel:+19293362435), [452803978#](tel:+1929336452803978)
Phone Conference
ID: 452 803 978#



QR Code for:
Virtual Check-in
Time
Maps
IAP
COVID19 Self Test



INCIDENT OBJECTIVES (ICS 202)

| | | |
|--|---|--|
| 1. Incident Name: | 2. Operational Period: DAY/NIGHT | |
| WALKER CREEK & CHICKADEE CREEK | Date/Time From: 08/29/2021 0600 SUN | Date/Time To: 08/30/2021 0600 MON |
| 3. Objective(s): | | |
| <ul style="list-style-type: none"> • Ensure firefighter, aviator and public safety is the priority in all fire management activities by utilizing a risk-based approach to decision making. • Implement a full suppression strategy utilizing direct and indirect tactics having a high probability of success while aligning with values at risk and remaining fiscally responsible. • Develop and maintain relationships with BLM, WA DNR, USFS, Okanogan County, local agencies, cooperators, stakeholders, and the public while providing consistent and timely public information. • Utilize appropriate fire strategies to minimize fire impacts on private properties, recreation trails, infrastructure, and natural & cultural resources including timber, grazing land, spotted owl and Canadian Lynx habitat, white bark pine, and cultural, historic and heritage sites. • Follow CDC/PNWCG Best Management Practices to minimize public and responder exposure to transmission or infection from COVID-19. | | |
| 4. Operational Period Command Emphasis: | | |
| Secure and mop-up direct control lines. Improve indirect control lines, make preparations for firing operations and implement where needed. | | |
| General Situational Awareness: | | |
| Maintain situational awareness, identify hazards and develop mitigations for them. | | |
| 5. Site Safety Plan Required? Yes <input type="checkbox"/> No <input checked="" type="checkbox"/> | | |
| Approved Site Safety Plan(s) Located | | |
| 6. Incident Action Plan (the items checked below are included in this Incident Action Plan): | | |
| <input checked="" type="checkbox"/> ICS 202 <input checked="" type="checkbox"/> ICS 203 <input checked="" type="checkbox"/> ICS 204 <input checked="" type="checkbox"/> ICS 205 <input type="checkbox"/> ICS 205A <input checked="" type="checkbox"/> ICS 206 | <input type="checkbox"/> ICS 207 <input type="checkbox"/> ICS 208 <input checked="" type="checkbox"/> ICS 220 <input checked="" type="checkbox"/> Map/Chart <input checked="" type="checkbox"/> Weather Forecast/Tides/Currents | Other Attachments: <input checked="" type="checkbox"/> HR MESSAGE <input checked="" type="checkbox"/> COVID SCREENING <input type="checkbox"/> _____ <input type="checkbox"/> _____ |
| 7. Prepared by: MARGE HUTCHINSON Position/Title: PSC2 | Signature: <i>Marge Hutchinson</i> | |
| 8. Approved by Incident Commander: | Name: JEFF DIMKE | Signature: <i>Jeff Dimke</i> |
| ICS 202 | IAP Page | Date/Time: 08/28/2021 2000 |

ORGANIZATION ASSIGNMENT LIST (ICS 203)

| | | | |
|--|--|---|--------------------------------------|
| 1. Incident Name: | | 2. Operational Period: DAY/NIGHT | |
| WALKER CREEK & CHICKADEE CREEK | | Date/Time From: 08/29/2021 0600 | SUN |
| | | Date/Time To: 08/30/2021 0600 | MON |
| 3. Incident Commander(s) and Command Staff: | | FOOD UNIT | RUSS HOVEY |
| IC/UC | JEFF DIMKE | SECURITY UNIT | |
| DEPUTY | BOBBY SHINDELAR | 7. Operations Section: | |
| SAFETY OFFICER | TROY CORN JACK CATES (VIRTUAL) | PLANNING OPS | AARON ROWE |
| INFORMATION OFFICER | MARY BEAN ROLAND EMETAZ | OPS SECTION CHIEF | TONY ENGEL JEROMY WILSON (T) |
| LIAISON OFFICER | SCOTT CRAWFORD | BRANCH DIRECTOR | CHRIS ZOLLER |
| HEALTH LIAISON | LIV STECKER | BRANCH DIRECTOR | JERRAN FLINDERS |
| HUMAN RESOURCE SPECIALIST | SUSIE MANEZES | | |
| 4. Agency/Organization Representative(s): | | DIVISION/GROUP | A/F |
| Agency/Organization | Name | DIVISION/GROUP | H |
| | | DIVISION/GROUP | Q |
| DNR | KEN MCNAMEE (ADMIN) BRETT WALKER (AREP) | DIVISION/GROUP | T |
| USFS | RODNEY SMOLDEN (ADMIN) TRAVIS FLETCHER (AREP) | DIVISION/GROUP | C |
| BLM | CURTIS BRYANT (ADMIN) TIM MURPHREE (AREP) | DIVISION/GROUP | K/O |
| OKANOGAN COUNTY OES | MAURICE GOODALL | DIVISION/GROUP | NIGHT |
| 5. Planning Section: | | | |
| CHIEF | MARGE HUTCHINSON | 7b. Air Operations Branch: | |
| DEPUTY | HOWARD JOHNSON (VIRTUAL) | AIR OPS BRANCH DIRECTOR | MIKE DAVIS GREG RESER (T) |
| RESOURCES UNIT | JILL JOHNSON | AIR ATTACK SUPERVISOR | |
| SITUATION UNIT | DAVE WISCHER | AIR SUPPORT SUPERVISOR | TIM LYDA |
| DOCUMENTATION UNIT | DEIDRE SMITH (VIRTUAL)) | 8. Finance/Administration Section: | |
| DEMOBILIZATION UNIT | MIKE HESTON (VIRTUAL) ED MORGAN | CHIEF | CHERI FULLER CHRISTINA GOEBEL (T) |
| FIRE BEHAVIOR ANALYST | DON STRAND | TIME UNIT | CAROL LONG |
| GIS SPECIALIST | SHAWN BUSHNELL MIKE TONKEL (T) | PROCUREMENT UNIT | MARK BOHNET |
| TECHNOLOGY SUPPORT SPECIALIST | GEORGE JENKINS TODD MALLERY | COMPENSATION UNIT | CHERI FULLER |
| INCIDENT METEOROLOGIST | BOB TOBIN | COST UNIT | KAY HIGH (VIRTUAL) |
| 6. Logistics Section: | | ICPI | ROB HECHINGER |
| CHIEF | DAN SOPTICH | | |
| DEPUTY | KEVIN HAUGHTON | | |
| SUPPLY UNIT | JOHN KAUPA | | |
| FACILITIES UNIT | SCOTT BEAULAUER | | |
| GROUND SUPPORT UNIT | DAVEHARSH | | |
| COMMUNICATIONS UNIT | MISSY PARKER | | |
| MEDICAL UNIT | EAMONN RYAN; DIANA BRAUN LEE VENNING (T) | | |
| 9. Prepared By: | Name: JILL JOHNSON | Position/Title: RESL | Signature: |
| ICS 203 | IAP Page | Date/Time: 08/28/2021 2000 | <i>Jill Johnson</i> |

Fire Weather Forecast

FORECAST NO: 22
PREDICTION FOR: Sunday
Shift Date: August 29, 2021

INCIDENT: Walker-Chickadee Fires
UNIT: DNR-USFS-BLM
SIGNED: *Bob Tabix*

TIME AND DATE

Incident Meteorologist (IMET)

FORECAST ISSUED: 8/28/2021 at 2000

Weather Discussion: High pressure over the region will begin to flatten today in response to a strong upstream weather disturbance. Sunday will be the warmest day of the week. A series of weather disturbances will then move into the region on Monday and will linger through Thursday. Warm temperatures on Sunday will quickly give away to cooler than normal temperatures. A few showers are possible Tuesday and Wednesday, but little in the way of precipitation is expected.

WEATHER FORECAST: Chickadee

Sunday:

SKY/WEATHER: Mostly sunny.
High Temperature...69-75 above 4000 ft...77-84 below 4000 ft. 24hr chg: Up 3-5 degrees
Min RH.....22-27% above 4000 ft...17-23% below 4000 ft. 24hr chg: Down 3-4 percent.
20-FOOT WINDS: Southwest winds 8-10 mph with gusts to 15 mph.
CWR (>=0.10")....0% **LAL....**1 **Haines Index...4 (Low)** **Mixing Height...6600 ft AGL**

Tonight:

SKY/WEATHER: Partly cloudy.
Low Temperature...50-55.
Max RH.....35-45%
20-FOOT WINDS: Becoming northwest-north 5-8 mph after 2100. Mainly drainage 2-4 mph mid-slopes and valleys.
CWR (>=0.10")....0% **LAL....**1

WEATHER FORECAST: Walker

Sunday:

SKY/WEATHER: Mostly sunny.
High Temperature...67-73 above 4000 ft...78-83 below 4000 ft. 24hr chg: Up 3-6 degrees
Min RH.....20-26% above 4000 ft...18-24% below 4000 ft. 24hr chg: Down 4-5 percent.
20-FOOT WINDS: Southwest 5-10 mph with gusts to 15 mph.
CWR (>=0.10")....0% **LAL....**1 **Haines Index...4 (Low)** **Mixing Height...6400 ft AGL**

Tonight:

SKY/WEATHER: Partly cloudy.
Low Temperature...45-50.
Max RH.....45-55%
20-FOOT WINDS: Becoming northwest-north 5-10 mph after 2300. Mainly drainage 2-4 mph mid-slopes and valleys.
CWR (>=0.10")....0% **LAL....**1

Extended Outlook

Monday... Mostly cloudy. High: 65-75. Min RH: 20-30% Winds: Northwest-north 10-12 mph gusts to 25 mph.
Tuesday... Mostly cloudy. A chance of showers. High: 60-70. Min RH: 30-40% Winds: Northwest-north 10-12 with gusts to 15 mph.
Wednesday...Partly cloudy. High: 60-70. Min RH: 30-40% Winds: Northwest 8-10 mph with gusts to 15 mph.

FIRE BEHAVIOR FORECAST

| | |
|---|--|
| FORECAST NUMBER: 22 | TYPE OF FIRE: Wildland |
| FIRE NAME: Walker Creek & Chickadee Creek | OPERATIONAL PERIOD: Aug 29-30 2021 0600-0600 |
| DATE ISSUED: Aug 28, 2021 | TIME ISSUED: 2000 |
| UNIT: WA DNR, BLM, USFS | Don Strand FBAN |

INPUTS

WEATHER SUMMARY: See attached fire weather forecast

OUTPUTS

FIRE BEHAVIOR

FUELS: The fires are burning mostly in mixed conifer timber consisting of Douglas-fir, western larch, Engelmann spruce, and lodgepole pine below 6,000'. Sub-alpine fir, white bark pine, and lodgepole pine occur above 6,000'. All timber types have ladder fuels with black moss/lichens that make for an easy transition to crown fire. Dead fine fuels, grass, and slash will increase surface fire spread. Most live fuels, except for red alder, are available to carry fire and fuel moistures will continue to drop with seasonal drying. Live fuels are still drought stressed.

GENERAL: Increasing fire behavior potential today as a result of increasing temps and lower humidity. Fine dead fuels will be more available to carry fire. Expect increased smoldering and creeping in available fuels starting around midday. As the humidity drops toward the low 20% range potential for isolated area of surface fire to transition to torching with spotting exists. In areas where there is wind/slope alignment along with available surface and ladder fuels, a short upslope run could occur. Continue to watch for hold over spots from previous fire activity. to fire edge can cause spotting. Pitchy/punky wood and fine fuels still will be receptive fuel beds. Any spotting will be short range.

SPECIFIC:

Chickadee: Expect more active fire today with the warmer temps and lower humidity. In areas where wind/slope alignment exist, expect more active fire activity with potential for short upslope torching runs. Burnout operations should be effective earlier in the day. Winds will be southerly in the Sinlahekin
Fuel Moistures- Aeneas LO WIMS data from yesterday were- 10-hour 12%, 100-hour 14%, 1000-hour 14%. ERC 42.

Probability of Ignition will approach 80% unshaded and 50% shaded.

Walker: Expect moderate fire behavior potential with the warmer temps and lower RH. Fire will be smoldering and creeping early, with humidity decreasing near 20% in the afternoon expect increasing fire activity in available fuels. Burnout operations should improve although potential exists for isolated torching and spotting. Continue to keep an eye out for wind/slope alignment.

Fuel Moistures- Lost Lake RAWs WIMS data from yesterday were- 10-hour 13%, 100-hour 14%, 1000-hour 16%. ERC 39.

Probability of Ignition will approach 80% unshaded and 50% shaded.

Night: Poor to moderate humidity recovery tonight in the mid and upper elevation so fuels will be available to carry fire into the night. Pay attention to the transition from upslope to downslope wind. Isolated areas of both fires will continue to burn in pockets of heavier surface fuels above the inversion. Stump holes burning deep

AIR OPERATIONS: Expect some turbulence in areas of complex terrain

SAFETY

Probability of Ignition higher today than the last several days, keep an eye out for spotting from any flare up near control lines.

Weather becoming slight warmer and drier the next few days. So, fire behavior potential is increasing and remember fuel and fire conditions will vary.

SAFETY MESSAGE

29-30 August 2021

INCIDENT: Walker Creek/Chickadee

OPERATIONAL PERIOD: 0600-0600

COVID MITIGATIONS

Please review your COVID/Viral Transmission prevention guidelines. Maintain your distancing to the greatest extent, cough or sneeze away from other people, mask up when indoors and respect the personal space of others. If you begin feeling ill, notify your supervisor and seek medical attention for screening.

FIRING OPERATIONS

- *Ensure all personnel are briefed of operations that affect them.
- *Wear appropriate PPE.
- *Ensure ignition plans are developed, briefed and communicated.
- *Ensure road security at firing points.
- *Ensure communication among firing and holding crews.

EXTRACTION

Review extraction routes and methods. Identify equipment on hand and needed to facilitate extraction over rough terrain. Recognize precautions that need to be taken for different types of injuries.

Ensure LCES in in place before engaging and continue to evaluate during the entire shift.

| Hazard | Mitigation | Post Risk |
|--|---|-----------|
| Viral Transmission Mitigations, Communicable Disease | Maintain awareness of health, perform self checks, maintain social distancing, wear face coverings when indoors or when social distancing cannot be maintained. Report and isolate if feeling symptomatic. Coordinate with Okanogan County Public Health for testing, reporting and isolation as needed. | Low |
| Extraction Time | Identify medivac sites and helispots. Initiate ground transport to accident site. Identify EMT/EMTP from resources assigned to division. Provide line qualified paramedics to each division as available. Review IWI protocol to ensure familiarity. Utilize civilian medivac as treatment/timing dictates. Evaluate on-going need for repositioning medical personnel. | High |
| Heavy Equipment | Post lookouts around equipment work areas. Establish communications with equipment boss and operator. Do not work down slope from equipment. Familiarize crews with specialty equipment and processes. | High |
| Hazard Trees | Use avoidance to limit exposure time. Snag ahead to avoid exposure. Use qualified fallers, blasting, or alternate methods if needed. Conduct on-going risk analysis of all work areas. Follow Hazard Tree Safety Guidelines (IRPG page 22). | High |
| Aircraft | Utilize Air Attack. Ensure all resources are a safe distance from all bucket and retardant drops. Establish LCES. Utilize air to ground primary radio channel. Reference IRPG (Safe aircraft operations pg. 56-58). Ensure IA resources have coordination with unassigned local air resources to provide deconfliction. | High |
| Steep Terrain/Gravity | Do not work crews above or below each other. Post lookouts for rolling material. Watch footing in loose soil, rock and around vegetation. Do not work below heavy equipment. Scout and identify travel routes. Establish LCES. | Moderate |
| Physical Factors | Maintain hydration schedule. Closely monitor work rate and implement rest periods. Maintain nutrition. Ensure adequate work/rest. | Moderate |
| Environmental Factors | Assign medical personnel to camp. Assess for known allergies and report to medical personnel. Obtain Bee Bopper/wasp spray and yellow jacket traps. Maintain an awareness of livestock. Keep an eye out for wildlife including bears, cougars, and rattlesnakes. | Moderate |
| Fire Behavior | Be aware of burn windows and weather impacts and min/max RH for flashy fuels/local conditions. Be aware of increased fire behavior and concerns specific to thunderstorm safety (IRPG p. 21). Report changes to FBAN and IMET. Include thunderstorm safety message in IAP. | Moderate |
| Unburned Fuels/Firing Ops | Establish LCES. Ensure management action points are implemented and followed. Weather updates as needed during burning operations. Locate indirect firelines to minimize the amount of unburned fuels. Follow Interagency Ignition Guide. Ensure communications between all firing operations. Establish road security at all firing sites. Follow approved firing plan for unburned fuels. | Moderate |
| Transportation | Signing of all incident roads that provide access to divisions. Daily updated travel plan maps. Practice defensive driving. In local communities obey the posted speed limits. Use reader boards to control entry as needed. Identify and evaluate contingency and alternate escape and travel routes. | Moderate |
| Communication | Evaluate for dead zones prior to engagement. Utilize human repeaters as needed. Ensure accountability of resources in problem areas. | Low |
| Public Interaction | Place new road closures as necessary and maintain current closures. Maintain awareness of evacuation areas and provide accurate information dissemination. | Low |

Division/Group Assignment List (ICS 204 WF)
Controlled Unclassified Information//Basic

| | | | | | | |
|---|---------|---|-------------------|----------------------------------|-----------------------|---------------|
| 1. Incident Name: | | | 3. | | | |
| WALKER CREEK & CHICKADEE CREEK | | | Branch: | | Division/Group | |
| 2. Operational Period: DAY/NIGHT | | | I | | A/F | |
| Date/Time From: 08/29/2021 0600 | SUN | Date/Time To: 08/30/2021 0600 | | | | |
| 4. Operations Personnel | | | | | | |
| OPERATIONS CHIEF | | TONY ENGEL; AARON ROWE JEROMY WILSON (T) | | BRANCH DIRECTOR | | ZOLLER, CHRIS |
| SAFETY OFFICER | | TROY CORN; JACK CATES | | DIVISION/GROUP SUPERVISOR | | CODY ACORD |
| 5. Resources Assigned this Period | | | | | | |
| Strike Team / Task Force / Resource Designator | LWD | Leader | Number Persons | Drop Off PT./Time | Pick Up PT./Time | |
| O-435 SOF2 | 09/11 | JOSH NORTHRUP | 1 | DP-354/0600 | DP-354/1800 | |
| O-450 SOF2 (T) | 09/02 | PHIL GRAHAM | 1 | DP-354/0600 | DP-354/1800 | |
| O-350 TFLD (T) | 09/06 | CORY FISCHER | 1 | DP-354/0600 | DP-354/1800 | |
| O- TFLD (LOAN) | | ROBERT CODA | 1 | DP-354/0600 | DP-354/1800 | |
| O-260 STEN | 09/01 | DAVID HADLEY | 1 | DP-354/0600 | DP-354/1800 | |
| | | | | | | |
| O-422 SMOD REPUBLIC C-201 | | BRAD FREDRICKSON | 10 | DP-354/0600 | DP-354/1800 | |
| O- SMOD (LOAN) | | KEVIN ARGUETA | 10 | DP-354/0600 | DP-354/1800 | |
| | | | | | | |
| C-82 HC2 NORTH REFORESTATION CO | 09/08 | JOSE RINCON | 20 | DP-354/0600 | DP-354/1800 | |
| | | | | | | |
| E-5 ENG3 ARCHER MOUNTAIN | 08/29 | TOM HATTON | 3 | DP-354/0600 | DP-354/1800 | |
| E-87 ENG6 OK-OKS EC 95 | 09/01 | CLAYTON HEARST | 3 | DP-354/0600 | DP-354/1800 | |
| E-95 ENG6 TENNESSEE E3762 | 08/31 | DILLON MASH | 4 | DP-354/0600 | DP-354/1800 | |
| E-123 ENG4 HI COUNTRY | 09/09 | JEREMY PATRICK | 3 | DP-354/0600 | DP-354/1800 | |
| E-215 ENG4 GOODING E91826 | 08/30 | MITCH KISSEL | 3 | DP-354/0600 | DP-354/1800 | |
| E-217 ENG6 ACCESS FIRE | 09/04 | KEN VIRDEN | 3 | DP-354/0600 | DP-354/1800 | |
| E-218 ENG4 IDAHO HEATSEEKER 19 | 09/04 | CASEY JOHNSON | 3 | DP-354/0600 | DP-354/1800 | |
| | | | | | | |
| 8. Division/Group Communication Summary | | | | | | |
| Function | Channel | RX Frequency N/W | RX Tone/NAC | TX Frequency N/W | TX Tone/NAC | Mode |
| COMMAND | 1 | 170.0625 | 114.8 | 162.1750 | 114.8 | A |
| COMMAND | 2 | 170.3125 | 114.8 | 167.8375 | 114.8 | A |
| COMMAND | 3 | 170.4500 | 114.8 | 168.1000 | 114.8 | A |
| COMMAND | 4 | 172.5375 | 114.8 | 163.5500 | 114.8 | A |
| TACTICAL | 6 | 168.0500 | 114.8 | 168.0500 | 114.8 | A |
| AIR TO GROUND | 15 | 168.1375 | | 168.1375 | | A |
| 9. Prepared By (Resource Unit Leader) | | Approved By (Planning Section Chief) | | Date | | Time |
| JILL JOHNSON | | MARGE HUTCHINSON | | 08/28/2021 | | 2000 |

Division/Group Assignment List (ICS 204 WF)
Controlled Unclassified Information//Basic

| | | | | | | |
|---|---------|---|---|----------------------------------|-----------------------|------------------|
| 1. Incident Name: | | | 3. | | | |
| WALKER CREEK & CHICKADEE CREEK | | | Branch: | | Division/Group | |
| 2. Operational Period: DAY/NIGHT | | | I | | A/F | |
| Date/Time From: 08/29/2021 0600 SUN | | Date/Time To: 08/30/2021 0600 MON | | | | |
| 4. Operations Personnel | | | | | | |
| OPERATIONS CHIEF | | TONY ENGEL; AARON ROWE JEROMY WILSON (T) | | BRANCH DIRECTOR | | ZOLLER, CHRIS |
| SAFETY OFFICER | | TROY CORN; JACK CATES | | DIVISION/GROUP SUPERVISOR | | CODY ACORD |
| 5. Resources Assigned this Period | | | | | | |
| Strike Team / Task Force / Resource Designator | | LWD | Leader | Number Persons | Drop Off PT./Time | Pick Up PT./Time |
| E-235 ENG6 SPOKANE B51 | | 09/03 | JOSH SAMPSON | 3 | DP-354/0600 | DP-354/1800 |
| E-236 ENG3 WA-SPFN 3 | | 09/03 | DENNIS STARRING | 3 | DP-354/0600 | DP-354/1800 |
| E-256 ENG5 WILD FIRE SERVICES | | 09/07 | JAMIE RODOM | 1 | DP-354/0600 | DP-354/1800 |
| E-284 ENG6 REPUBLIC E622 (IA) | | 09/09 | GABE GIDDINGS | 4 | DP-354/0600 | DP-354/1800 |
| E-135 WTS2 FOX CREEK ENTERPRISES | | 08/30 | MAUREEN WEST | 1 | DP-354/0600 | DP-354/1800 |
| E-175 WTS3 STOTTS CONSTRUCTION | | 09/04 | JOSEPH HUDSON | 1 | DP-354/0600 | DP-354/1800 |
| E-1S DOZ3 JONES LOGGING | | | JASON JONES | 2 | DP-354/0600 | DP-354/1800 |
| E-196 PCT3 TUNK PUMPER CAT | | 09/04 | CLARENCE FINLEY | 2 | DP-354/0600 | DP-354/1800 |
| E-24 AMBU STEVENS SHERIFF AMBU 1 (ALS) | | 09/01 | BRITTIAN | 2 | DP-354/0600 | DP-354/1800 |
| O-159 EMTF | | 09/11 | HANS JOHNSEN | 1 | DP-354/0600 | DP-354/1800 |
| O-393 EMPF | | 09/06 | ROSS BYRD | 1 | DP-354/0600 | DP-354/1800 |
| 6. Control Operations/Work Assignments: | | | | | | |
| 8. Division/Group Communication Summary | | | | | | |
| Function | Channel | RX Frequency N/W | RX Tone/NAC | TX Frequency N/W | TX Tone/NAC | Mode |
| COMMAND | 1 | 170.0625 | 114.8 | 162.1750 | 114.8 | A |
| COMMAND | 2 | 170.3125 | 114.8 | 167.8375 | 114.8 | A |
| COMMAND | 3 | 170.4500 | 114.8 | 168.1000 | 114.8 | A |
| COMMAND | 4 | 172.5375 | 114.8 | 163.5500 | 114.8 | A |
| TACTICAL | 6 | 168.0500 | 114.8 | 168.0500 | 114.8 | A |
| AIR TO GROUND | 15 | 168.1375 | | 168.1375 | | A |
| 9. Prepared By (Resource Unit Leader) | | | Approved By (Planning Section Chief) | | Date | Time |
| JILL JOHNSON | | | MARGE HUTCHINSON | | 08/28/2021 | 2000 |

Division/Group Assignment List (ICS 204 WF)

Controlled Unclassified Information//Basic

| | | | | | | | |
|--|---------|---|---|----------------------------------|-------------|---------------|-------------|
| 1. Incident Name: | | | | 3. | | | |
| WALKER CREEK & CHICKADEE CREEK | | | | I | | A/F | |
| 2. Operational Period: DAY/NIGHT | | | | | | | |
| Date/Time From: 08/29/2021 0600 SUN | | Date/Time To: 08/30/2021 0600 MON | | | | | |
| 4. Operations Personnel | | | | | | | |
| OPERATIONS CHIEF | | TONY ENGEL; AARON ROWE JEROMY WILSON (T) | | BRANCH DIRECTOR | | ZOLLER, CHRIS | |
| SAFETY OFFICER | | TROY CORN; JACK CATES | | DIVISION/GROUP SUPERVISOR | | CODY ACORD | |
| 6. Control Operations/Work Assignments: | | | | | | | |
| <p>Task Patrol and mop up from the T/A break to the H/Q break. Mop areas that threaten structures or other values at risk; consider forecast weather, seasonality and the probability of fire actually impacting values.</p> <p>Purpose Contain fire progression within the current fire perimeter; limit threat to structures in the Bonaparte Lake area.</p> <p>End State Fire is controlled within the current fire perimeter and structures at Bonaparte Lake are no longer threatened.</p> | | | | | | | |
| 7. Special Instructions: | | | | | | | |
| <p>Division breakout will be at the DP-354.</p> <p>Notify READ if cultural materials are found during mop up. Leave in place, flag and GPS. READs (D. Pearson, M. Wilson & A. Miller) will notify DIVS when entering or leaving the division.</p> | | | | | | | |
| 8. Division/Group Communication Summary | | | | | | | |
| Function | Channel | RX Frequency N/W | RX Tone/NAC | TX Frequency N/W | TX Tone/NAC | Mode | |
| COMMAND | 1 | 170.0625 | 114.8 | 162.1750 | 114.8 | A | |
| COMMAND | 2 | 170.3125 | 114.8 | 167.8375 | 114.8 | A | |
| COMMAND | 3 | 170.4500 | 114.8 | 168.1000 | 114.8 | A | |
| COMMAND | 4 | 172.5375 | 114.8 | 163.5500 | 114.8 | A | |
| TACTICAL | 6 | 168.0500 | 114.8 | 168.0500 | 114.8 | A | |
| AIR TO GROUND | 15 | 168.1375 | | 168.1375 | | A | |
| 9. Prepared By (Resource Unit Leader) | | | Approved By (Planning Section Chief) | | | Date | Time |
| JILL JOHNSON | | | MARGE HUTCHINSON | | | 08/28/2021 | 2000 |

Division/Group Assignment List (ICS 204 WF)
Controlled Unclassified Information//Basic

| | | | | | | |
|---|---------|---|---|----------------------------------|-----------------------|------------------|
| 1. Incident Name: | | | 3. | | | |
| WALKER CREEK & CHICKADEE CREEK | | | Branch: | | Division/Group | |
| 2. Operational Period: DAY/NIGHT | | | I | | H | |
| Date/Time From: 08/29/2021 0600 | SUN | Date/Time To: 08/30/2021 0600 | | | | |
| 4. Operations Personnel | | | | | | |
| OPERATIONS CHIEF | | TONY ENGEL; AARON ROWE JEROMY WILSON (T) | | BRANCH DIRECTOR | | ZOLLER, CHRIS |
| SAFETY OFFICER | | TROY CORN; JACK CATES | | DIVISION/GROUP SUPERVISOR | | MATT KENNEDY |
| 5. Resources Assigned this Period | | | | | | |
| Strike Team / Task Force / Resource Designator | | LWD | Leader | Number Persons | Drop Off PT./Time | Pick Up PT./Time |
| O-435 SOF2 | | 09/11 | JOSH NORTHRUP | 1 | DP-354/0600 | DP-354/1800 |
| O-450 SOF2 (T) | | 09/02 | PHIL GRAHAM | 1 | DP-354/0600 | DP-354/1800 |
| E-129.1 TFLD (T) | | 08/30 | DARCY BODY | 1 | DP-354/0600 | DP-354/1800 |
| O-342 TFLD | | 09/05 | JEFF MEADOWS | 1 | DP-354/0600 | DP-354/1800 |
| O-351 HEQB (T) | | 09/05 | JADE DRAUSE | 1 | DP-354/0600 | DP-354/1800 |
| O-399 FOBS | | 09/08 | BRIAN BOLSER | 1 | DP-354/0600 | DP-354/1800 |
| C-65 HC2 PR REFORESTATION INC | | 09/04 | JARIO SILVA | 20 | DP-354/0600 | DP-354/1800 |
| C-68 HC2 SZ FORESTRY | | 08/31 | RICHARD FULLERTON | 20 | DP-354/0600 | DP-354/1800 |
| E-6S ENG6 WORK HORSE | | 09/07 | TY STRATIT | 2 | DP-354/0600 | DP-354/1800 |
| E-129 ENG6 TONASKET RD E691 | | 08/30 | TAYLOR ORTEG | 3 | DP-354/0600 | DP-354/1800 |
| E-216 ENG3 TFD-2301 | | 09/04 | MICHAEL JOHNSON | 3 | DP-354/0600 | DP-354/1800 |
| E-5003 ENG6 TONASKET RD E612 (LOAN) | | 08/30 | KYLE KERSTIENS | 3 | DP-354/0600 | DP-354/1800 |
| E-5011 ENG6 COLORADO E681 | | 09/09 | CHAD BAKKEN | 5 | DP-354/0600 | DP-354/1800 |
| E-254 WTT2 STEVENS COUNTY T9 | | 09/05 | ZACHARY WOLF | 2 | DP-354/0600 | DP-354/1800 |
| EERA WT SILVER NICKEL | | | | 1 | DP-354/0600 | DP-354/1800 |
| 8. Division/Group Communication Summary | | | | | | |
| Function | Channel | RX Frequency N/W | RX Tone/NAC | TX Frequency N/W | TX Tone/NAC | Mode |
| COMMAND | 1 | 170.0625 | 114.8 | 162.1750 | 114.8 | A |
| COMMAND | 2 | 170.3125 | 114.8 | 167.8375 | 114.8 | A |
| COMMAND | 3 | 170.4500 | 114.8 | 168.1000 | 114.8 | A |
| COMMAND | 4 | 172.5375 | 114.8 | 163.5500 | 114.8 | A |
| TACTICAL | 8 | 168.6000 | 114.8 | 168.6000 | 114.8 | A |
| AIR TO GROUND | 15 | 168.1375 | | 168.1375 | | A |
| 9. Prepared By (Resource Unit Leader) | | | Approved By (Planning Section Chief) | | Date | Time |
| JILL JOHNSON | | | MARGE HUTCHINSON | | 08/28/2021 | 2000 |

Division/Group Assignment List (ICS 204 WF)
Controlled Unclassified Information//Basic

| | | | | | | |
|---|---------|---|---|----------------------------------|---------------------------------------|------------------|
| 1. Incident Name: | | | | 3. | | |
| WALKER CREEK & CHICKADEE CREEK | | | | Branch: I | Division/Group H | |
| 2. Operational Period: DAY/NIGHT | | | | | | |
| Date/Time From: 08/29/2021 0600 SUN | | Date/Time To: 08/30/2021 0600 MON | | | | |
| 4. Operations Personnel | | | | | | |
| OPERATIONS CHIEF | | TONY ENGEL; AARON ROWE JEROMY WILSON (T) | | BRANCH DIRECTOR | | ZOLLER, CHRIS |
| SAFETY OFFICER | | TROY CORN; JACK CATES | | DIVISION/GROUP SUPERVISOR | | MATT KENNEDY |
| 5. Resources Assigned this Period | | | | | | |
| Strike Team / Task Force / Resource Designator | | LWD | Leader | Number Persons | Drop Off PT./Time | Pick Up PT./Time |
| E-223 DOZ2 SILVER-NICKEL LOGGING | | 09/01 | DOC COMBS | 2 | DP-354/0600 | DP-354/1800 |
| E-32S DOZ4 BOB MCDANIEL LOGGING | | 09/07 | KEN MICHAELS | 1 | DP-354/0600 | DP-354/1800 |
| E-131 EXCA (MINI) TONASKET RD | | 09/04 | DENISON/ WILLIAMS | 2 | DP-354/0600 | DP-354/1800 |
| E-272 EXCA NORTH COLUMBIA ENTERPRISES | | 09/07 | SCOTT BUTTERFIELD | 2 | DP-354/0600 | DP-354/1800 |
| E-141 FEL1 BOB MCDANIEL | | 09/03 | RODOLPHO RODRIQUEZ | 1 | DP-354/0600 | DP-354/1800 |
| E-142 FEL1 WILL LOGGING & CONSTRUCTIO | | 09/09 | ADAM BAKER | 1 | DP-354/0600 | DP-354/1800 |
| E-147 FEL1 SILVER NICKEL LLC | | 09/07 | MARK SMITH | 2 | DP-354/0600 | DP-354/1800 |
| E-148 FEL1 SILVER NICKEL LOGGING | | 09/07 | CASEY SILVERTHORN | 2 | DP-354/0600 | DP-354/1800 |
| E-182 FEL1 BOB MCDANIEL LOGGING | | 08/30 | JAKE BLACK | 1 | DP-354/0600 | DP-354/1800 |
| E-9C SKD1 SILVER NICKEL LOGGING | | 09/07 | NIK BROOKS | 1 | DP-354/0600 | DP-354/1800 |
| E-10C SKD1 SILVER NICKEL LOGGING | | 09/01 | RILEY BURK | 2 | DP-354/0600 | DP-354/1800 |
| E-11C SKD1 SILVER NICKEL LOGGING | | 09/02 | JOE KIDDERMAN | 2 | DP-354/0600 | DP-354/1800 |
| E-144 SKD4 TJ LOGGING | | 09/01 | WADE FIELD | 1 | DP-354/0600 | DP-354/1800 |
| E-145 SKD1 WILL LOGGING & CONSTR | | 09/05 | COLTEN GRONLUND | 1 | DP-354/0600 | DP-354/1800 |
| E-183 SKD1 BOB MCDANIAL LOGGING | | 09/05 | BRANDON WHEELER | 1 | DP-354/0600 | DP-354/1800 |
| E-113 SKG2 YELLOW JACKET FIRE EQUIPMENT | | 09/08 | NICK BADENHOP | 2 | DP-354/0600 | DP-354/1800 |
| 8. Division/Group Communication Summary | | | | | | |
| Function | Channel | RX Frequency N/W | RX Tone/NAC | TX Frequency N/W | TX Tone/NAC | Mode |
| COMMAND | 1 | 170.0625 | 114.8 | 162.1750 | 114.8 | A |
| COMMAND | 2 | 170.3125 | 114.8 | 167.8375 | 114.8 | A |
| COMMAND | 3 | 170.4500 | 114.8 | 168.1000 | 114.8 | A |
| COMMAND | 4 | 172.5375 | 114.8 | 163.5500 | 114.8 | A |
| TACTICAL | 8 | 168.6000 | 114.8 | 168.6000 | 114.8 | A |
| AIR TO GROUND | 15 | 168.1375 | | 168.1375 | | A |
| 9. Prepared By (Resource Unit Leader) | | | Approved By (Planning Section Chief) | | Date | Time |
| JILL JOHNSON | | | MARGE HUTCHINSON | | 08/28/2021 | 2000 |

Division/Group Assignment List (ICS 204 WF)
Controlled Unclassified Information//Basic

| | | | | | | |
|--|---------|---|---|----------------------------------|-----------------------|-------------|
| 1. Incident Name: | | | 3. | | | |
| WALKER CREEK & CHICKADEE CREEK | | | Branch: | | Division/Group | |
| 2. Operational Period: DAY/NIGHT | | | I | | H | |
| Date/Time From: 08/29/2021 0600 | SUN | Date/Time To: 08/30/2021 0600 | MON | | | |
| 4. Operations Personnel | | | | | | |
| OPERATIONS CHIEF | | TONY ENGEL; AARON ROWE JEROMY WILSON (T) | | BRANCH DIRECTOR | ZOLLER, CHRIS | |
| SAFETY OFFICER | | TROY CORN; JACK CATES | | DIVISION/GROUP SUPERVISOR | MATT KENNEDY | |
| 5. Resources Assigned this Period | | | | | | |
| Strike Team / Task Force / Resource Designator | LWD | Leader | Number Persons | Drop Off PT./Time | Pick Up PT./Time | |
| E-139 SKG1 SOFT TRACK ATTACK | 09/08 | JOSH COVEY | 2 | DP-354/0600 | DP-354/1800 | |
| EERA SELF LOADER | | BOB MCDANIEL | 2 | DP-354/0600 | DP-354/1800 | |
| E-160 LDFR SILVER NICKEL LOGGING | 09/07 | BURT SILVERTHORN | 1 | DP-354/0600 | DP-354/1800 | |
| O-245 EMPF | 09/06 | RICHARD SEWELL | 1 | DP-354/0600 | DP-354/1800 | |
| 6. Control Operations/Work Assignments: | | | | | | |
| <p>Task Secure fire edge between A/F break and DP 320. Complete indirect road prep on alternate (indirect) containment line.</p> <p>Purpose Contain fire within current fire perimeter.</p> <p>End State Fire is controlled south and west of the current fire perimeter; indirect containment line is completed.</p> | | | | | | |
| 7. Special Instructions: | | | | | | |
| <p>Division breakout will be at the park pavilion.</p> <p>Notify READ if cultural materials are found during mop up. Leave in place, flag and GPS. READs (D. Pearson, M. Wilson & A. Miller) will notify DIVS when entering or leaving the division.</p> | | | | | | |
| 8. Division/Group Communication Summary | | | | | | |
| Function | Channel | RX Frequency N/W | RX Tone/NAC | TX Frequency N/W | TX Tone/NAC | Mode |
| COMMAND | 1 | 170.0625 | 114.8 | 162.1750 | 114.8 | A |
| COMMAND | 2 | 170.3125 | 114.8 | 167.8375 | 114.8 | A |
| COMMAND | 3 | 170.4500 | 114.8 | 168.1000 | 114.8 | A |
| COMMAND | 4 | 172.5375 | 114.8 | 163.5500 | 114.8 | A |
| TACTICAL | 8 | 168.6000 | 114.8 | 168.6000 | 114.8 | A |
| AIR TO GROUND | 15 | 168.1375 | | 168.1375 | | A |
| 9. Prepared By (Resource Unit Leader) | | | Approved By (Planning Section Chief) | | Date | Time |
| JILL JOHNSON | | | MARGE HUTCHINSON | | 08/28/2021 | 2000 |

Division/Group Assignment List (ICS 204 WF)
Controlled Unclassified Information//Basic

| | | | | | | |
|---|---------|---|---|----------------------------------|-----------------------|-------------------------------------|
| 1. Incident Name: | | | 3. | | | |
| WALKER CREEK & CHICKADEE CREEK | | | Branch: | | Division/Group | |
| 2. Operational Period: DAY/NIGHT | | | II | | Q | |
| Date/Time From: 08/29/2021 0600 | SUN | Date/Time To: 08/30/2021 0600 | | | | |
| 4. Operations Personnel | | | | | | |
| OPERATIONS CHIEF | | TONY ENGEL; AARON ROWE JEROMY WILSON (T) | | BRANCH DIRECTOR | | JERRAN FLINDERS |
| SAFETY OFFICER | | TROY CORN; JACK CATES | | DIVISION/GROUP SUPERVISOR | | MICHAEL GOOD JAMES DICKINSON (T) |
| 5. Resources Assigned this Period | | | | | | |
| Strike Team / Task Force / Resource Designator | | LWD | Leader | Number Persons | Drop Off PT./Time | Pick Up PT./Time |
| O-435 SOF2 | | 09/11 | JOSH NORTHRUP | 1 | H30/0600 | H30/1800 |
| O-450 SOF2 (T) | | 09/02 | PHIL GRAHAM | 1 | H30/0600 | H30/1800 |
| O-285 HEQB | | 09/01 | TRISTAN CURRIN | 1 | H30/0600 | H30/1800 |
| E-130.1 HEQB (T) | | 08/30 | JEFFREY BABB | 1 | H30/0600 | H30/1800 |
| O-428 HEQB | | 09/01 | CHRIS BRUBAKER | 1 | H30/0600 | H30/1800 |
| E-120 ENG6 ARCHER MOUNTAIN ENTERPRISES | | 09/03 | JUSTUS BARTON | 3 | H30/0600 | H30/1800 |
| E-130 ENG6 TONASKET RD E692 | | 08/30 | DAVE HYLTON | 3 | H30/0600 | H30/1800 |
| E-92 DOZ2 PRICE EXCAVATION LLC | | 09/03 | JAMES PRICE | 2 | H30/0600 | H30/1800 |
| E-4C FEL1 WILL LOGGING & CONSTR | | 09/03 | BRANDON LATIMER | 1 | H30/0600 | H30/1800 |
| E-31C FEL1 NORTH PINE (R&R-BACK 8/30) | | 09/04 | SCOTT HUGHES | 1 | H30/0600 | H30/1800 |
| E-231 FEL1 MCCUEN | | 09/03 | NATHAN JOHNSON | 2 | H30/0600 | H30/1800 |
| E-232 FEL2 NORTH COLUMBIA ENTERPRISES | | 09/04 | DAN LOTZ | 2 | H30/0600 | H30/1800 |
| E-237 LOG PROCESSOR WILL LOGGING | | 09/04 | JASON SUTTON | 2 | H30/0600 | H30/1800 |
| E-280 LOG PROCESSOR TURLEY LOGGING | | 09/09 | BRAINDON HUBBARD | 3 | H30/0600 | H30/1800 |
| E-3C SKD1 WILL LOGGING & CONSTR | | 09/07 | ROGER SMITH | 1 | H30/0600 | H30/1800 |
| E-233 SKD2 NORTH COLUMBIA ENTERPR | | 09/03 | DALLES CRAPE | 2 | H30/0600 | H30/1800 |
| 8. Division/Group Communication Summary | | | | | | |
| Function | Channel | RX Frequency N/W | RX Tone/NAC | TX Frequency N/W | TX Tone/NAC | Mode |
| COMMAND | 1 | 170.0625 | 114.8 | 162.1750 | 114.8 | A |
| COMMAND | 2 | 170.3125 | 114.8 | 167.8375 | 114.8 | A |
| COMMAND | 3 | 170.4500 | 114.8 | 168.1000 | 114.8 | A |
| COMMAND | 4 | 172.5375 | 114.8 | 163.5500 | 114.8 | A |
| TACTICAL | 11 | 168.2500 | 114.8 | 168.2500 | 114.8 | A |
| AIR TO GROUND | 15 | 168.1375 | | 168.1375 | | A |
| 9. Prepared By (Resource Unit Leader) | | | Approved By (Planning Section Chief) | | Date | Time |
| JILL JOHNSON | | | MARGE HUTCHINSON | | 08/28/2021 | 2000 |

Division/Group Assignment List (ICS 204 WF)
Controlled Unclassified Information//Basic

| | | | | | | |
|---|---------|---|---|----------------------------------|-------------------|-------------------------------------|
| 1. Incident Name: | | | | 3. | | |
| WALKER CREEK & CHICKADEE CREEK | | | | II | Q | |
| 2. Operational Period: DAY/NIGHT | | | | | | |
| Date/Time From: 08/29/2021 0600 SUN | | Date/Time To: 08/30/2021 0600 MON | | | | |
| 4. Operations Personnel | | | | | | |
| OPERATIONS CHIEF | | TONY ENGEL; AARON ROWE JEROMY WILSON (T) | | BRANCH DIRECTOR | | JERRAN FLINDERS |
| SAFETY OFFICER | | TROY CORN; JACK CATES | | DIVISION/GROUP SUPERVISOR | | MICHAEL GOOD JAMES DICKINSON (T) |
| 5. Resources Assigned this Period | | | | | | |
| Strike Team / Task Force / Resource Designator | | LWD | Leader | Number Persons | Drop Off PT./Time | Pick Up PT./Time |
| E-234 SKD2 NORTH COLUMBIA ENTERPRISES | | 09/03 | TOM LOTZE | 2 | H30/0600 | H30/1800 |
| E-199 MAST MAST EAGLE CAP | | 08/31 | BEN FISCHER | 2 | H30/0600 | H30/1800 |
| E-200 MAST BRUCE YOUNG LOGGING | | 09/07 | MATT MCLAREN | 2 | H30/0600 | H30/1800 |
| E-277 MAST SWEDBERG CONTRACTING CORP. | | 09/09 | STEVEN MEDDOCK | 2 | H30/0600 | H30/1800 |
| O-221 EMPF | | 09/05 | DAVE BRIDGES | 1 | H30/0600 | H30/1800 |
| 6. Control Operations/Work Assignments: | | | | | | |
| <p>Task Complete indirect line utilizing road systems between H/Q and Q/T break. Limit road prep to the extent needed to contain fire progression; consider predicted weather, seasonality and the likelihood of future fire progression the north.</p> <p>Purpose Establish an indirect containment line to be used if fire progression continues to the north in DIVS Q.</p> <p>End State Indirect line established between H/Q and Q/T break; line is suitable for firing operation to limit potential future fire progression to the north.</p> | | | | | | |
| 7. Special Instructions: | | | | | | |
| <p>Division breakout will be at H30</p> <p>Notify READ if cultural materials are found during mop up. Leave in place, flag and GPS. READs (D. Pearson, M. Wilson & A. Miller) will notify DIVS when entering or leaving the division.</p> | | | | | | |
| 8. Division/Group Communication Summary | | | | | | |
| Function | Channel | RX Frequency N/W | RX Tone/NAC | TX Frequency N/W | TX Tone/NAC | Mode |
| COMMAND | 1 | 170.0625 | 114.8 | 162.1750 | 114.8 | A |
| COMMAND | 2 | 170.3125 | 114.8 | 167.8375 | 114.8 | A |
| COMMAND | 3 | 170.4500 | 114.8 | 168.1000 | 114.8 | A |
| COMMAND | 4 | 172.5375 | 114.8 | 163.5500 | 114.8 | A |
| TACTICAL | 11 | 168.2500 | 114.8 | 168.2500 | 114.8 | A |
| AIR TO GROUND | 15 | 168.1375 | | 168.1375 | | A |
| 9. Prepared By (Resource Unit Leader) | | | Approved By (Planning Section Chief) | | Date | Time |
| JILL JOHNSON | | | MARGE HUTCHINSON | | 08/28/2021 | 2000 |

Division/Group Assignment List (ICS 204 WF)
Controlled Unclassified Information//Basic

| | | | | | | |
|---|---------|---|---|----------------------------------|-----------------------|-----------------|
| 1. Incident Name: | | | 3. | | | |
| WALKER CREEK & CHICKADEE CREEK | | | Branch: | | Division/Group | |
| 2. Operational Period: DAY/NIGHT | | | II | | T | |
| Date/Time From: 08/29/2021 0600 | SUN | Date/Time To: 08/30/2021 0600 | | | | |
| 4. Operations Personnel | | | | | | |
| OPERATIONS CHIEF | | TONY ENGEL; AARON ROWE JEROMY WILSON (T) | | BRANCH DIRECTOR | | JERRAN FLINDERS |
| SAFETY OFFICER | | TROY CORN; JACK CATES | | DIVISION/GROUP SUPERVISOR | | MICHAEL JACKSON |
| 5. Resources Assigned this Period | | | | | | |
| Strike Team / Task Force / Resource Designator | LWD | Leader | Number Persons | Drop Off PT./Time | Pick Up PT./Time | |
| O-435 SOF2 | 09/11 | JOSH NORTHRUP | 1 | H30/0600 | H30/1800 | |
| O-450 SOF2 (T) | 09/02 | PHIL GRAHAM | 1 | H30/0600 | H30/1800 | |
| O-286 TFLD (T) | 09/01 | KEVIN CARLSEN | 1 | H30/0600 | H30/1800 | |
| O-23 FMOD BAILEY LOGGING | 09/03 | TAYLOR EVANS | 2 | H30/0600 | H30/1800 | |
| C-22 HC2 PR REFORESTATION | 09/01 | MARCO MENDOZA | 20 | H30/0600 | H30/1800 | |
| E-212 ENG4 FIRE WORKS | 09/01 | LAWRENCE GROVER | 3 | H30/0600 | H30/1800 | |
| E-214 ENG6 WHITEHEAD REFORESTATION | 08/31 | JOHN MIX | 3 | H30/0600 | H30/1800 | |
| E-219 ENG3 HEK JONES | 09/02 | BRINN JONES | 3 | H30/0600 | H30/1800 | |
| E-220 ENG4 OWSLEY CANYON ENG CO | 09/01 | DANNY CALLAHAN | 3 | H30/0600 | H30/1800 | |
| E-261 ENG5 LATE SUMMERS WILDFIRE | 09/07 | JOSH CROLLARD | 3 | H30/0600 | H30/1800 | |
| E-338 ENG6 AEGIS LOGISTICS | 09/11 | ROY VARNEY | 3 | H30/0600 | H30/1800 | |
| E-23 WTS1 OROVILLE TRANSIT MIX | 08/30 | GORDON WOOLEY | 3 | H30/0600 | H30/1800 | |
| E-42 WTS2 EVAN FINK | 08/29 | DAKOTA MEYER | 1 | H30/0600 | H30/1800 | |
| 8. Division/Group Communication Summary | | | | | | |
| Function | Channel | RX Frequency N/W | RX Tone/NAC | TX Frequency N/W | TX Tone/NAC | Mode |
| COMMAND | 1 | 170.0625 | 114.8 | 162.1750 | 114.8 | A |
| COMMAND | 2 | 170.3125 | 114.8 | 167.8375 | 114.8 | A |
| COMMAND | 3 | 170.4500 | 114.8 | 168.1000 | 114.8 | A |
| COMMAND | 4 | 172.5375 | 114.8 | 163.5500 | 114.8 | A |
| TACTICAL | 9 | 166.7250 | 114.8 | 166.7250 | 114.8 | A |
| AIR TO GROUND | 15 | 168.1375 | | 168.1375 | | A |
| 9. Prepared By (Resource Unit Leader) | | | Approved By (Planning Section Chief) | | Date | Time |
| JILL JOHNSON | | | MARGE HUTCHINSON | | 08/28/2021 | 2000 |

Division/Group Assignment List (ICS 204 WF)
Controlled Unclassified Information//Basic

| | | | | | | |
|---|---------|---|---|----------------------------------|---------------------------------------|-----------------|
| 1. Incident Name: | | | | 3. | | |
| WALKER CREEK & CHICKADEE CREEK | | | | Branch: II | Division/Group T | |
| 2. Operational Period: DAY/NIGHT | | | | | | |
| Date/Time From: 08/29/2021 0600 SUN | | Date/Time To: 08/30/2021 0600 MON | | | | |
| 4. Operations Personnel | | | | | | |
| OPERATIONS CHIEF | | TONY ENGEL; AARON ROWE JEROMY WILSON (T) | | BRANCH DIRECTOR | | JERRAN FLINDERS |
| SAFETY OFFICER | | TROY CORN; JACK CATES | | DIVISION/GROUP SUPERVISOR | | MICHAEL JACKSON |
| 5. Resources Assigned this Period | | | | | | |
| Strike Team / Task Force / Resource Designator | LWD | Leader | Number Persons | Drop Off PT./Time | Pick Up PT./Time | |
| E-20C DOZ3 SILVER-NICKEL LOGGING | 08/30 | GERALD SCHOLZ | 2 | H30/0600 | H30/1800 | |
| E-80 DOZ3 MCMILLAN CONSTRUCTION | 08/20 | DOUG MCMILLAN | 2 | H30/0600 | H30/1800 | |
| E-181 DOZ3 MC NALL CONSTRUCTION | 09/08 | BRYAN TIM | 2 | H30/0600 | H30/1800 | |
| E-114 SKDS SOFT TRACK ATTACK | 08/30 | DJ MCCRACKEN | 2 | H30/0600 | H30/1800 | |
| E-146 EXCA STOTTS CONSTRUCTION | 09/01 | MILES ANDERSON | 2 | H30/0600 | H30/1800 | |
| O-396.1 EMPF | 09/06 | MACK MARIN | 1 | H30/0600 | H30/1800 | |
| 6. Control Operations/Work Assignments: | | | | | | |
| 8. Division/Group Communication Summary | | | | | | |
| Function | Channel | RX Frequency N/W | RX Tone/NAC | TX Frequency N/W | TX Tone/NAC | Mode |
| COMMAND | 1 | 170.0625 | 114.8 | 162.1750 | 114.8 | A |
| COMMAND | 2 | 170.3125 | 114.8 | 167.8375 | 114.8 | A |
| COMMAND | 3 | 170.4500 | 114.8 | 168.1000 | 114.8 | A |
| COMMAND | 4 | 172.5375 | 114.8 | 163.5500 | 114.8 | A |
| TACTICAL | 9 | 166.7250 | 114.8 | 166.7250 | 114.8 | A |
| AIR TO GROUND | 15 | 168.1375 | | 168.1375 | | A |
| 9. Prepared By (Resource Unit Leader) | | | Approved By (Planning Section Chief) | | Date | Time |
| JILL JOHNSON | | | MARGE HUTCHINSON | | 08/28/2021 | 2000 |

Division/Group Assignment List (ICS 204 WF)

Controlled Unclassified Information//Basic

| | | | | | | | |
|--|---------|---|---|----------------------------------|-------------|-----------------|--|
| 1. Incident Name: | | | | 3. | | | |
| WALKER CREEK & CHICKADEE CREEK | | | | II | T | | |
| 2. Operational Period: DAY/NIGHT | | | | | | | |
| Date/Time From: 08/29/2021 0600 SUN | | Date/Time To: 08/30/2021 0600 MON | | | | | |
| 4. Operations Personnel | | | | | | | |
| OPERATIONS CHIEF | | TONY ENGEL; AARON ROWE JEROMY WILSON (T) | | BRANCH DIRECTOR | | JERRAN FLINDERS | |
| SAFETY OFFICER | | TROY CORN; JACK CATES | | DIVISION/GROUP SUPERVISOR | | MICHAEL JACKSON | |
| 6. Control Operations/Work Assignments: | | | | | | | |
| <p>Task Secure and mop up fire perimeter between Q/T break to T/A break; consider predicted weather, seasonality and the likelihood of future fire progression beyond the current fire perimeter.</p> <p>Purpose Fire is contained east of the current fire perimeter.</p> <p>End State Fire perimeter between Q/T break and T/A break is controlled; threat of future fire progression to the west is limited.</p> | | | | | | | |
| 7. Special Instructions: | | | | | | | |
| <p>Division breakout will be at DP-372.</p> <p>Notify READ if cultural materials are found during mop up. Leave in place, flag and GPS. READs (D. Pearson, M. Wilson & A. Miller) will notify DIVS when entering or leaving the division.</p> | | | | | | | |
| 8. Division/Group Communication Summary | | | | | | | |
| Function | Channel | RX Frequency N/W | RX Tone/NAC | TX Frequency N/W | TX Tone/NAC | Mode | |
| COMMAND | 1 | 170.0625 | 114.8 | 162.1750 | 114.8 | A | |
| COMMAND | 2 | 170.3125 | 114.8 | 167.8375 | 114.8 | A | |
| COMMAND | 3 | 170.4500 | 114.8 | 168.1000 | 114.8 | A | |
| COMMAND | 4 | 172.5375 | 114.8 | 163.5500 | 114.8 | A | |
| TACTICAL | 9 | 166.7250 | 114.8 | 166.7250 | 114.8 | A | |
| AIR TO GROUND | 15 | 168.1375 | | 168.1375 | | A | |
| 9. Prepared By (Resource Unit Leader) | | | Approved By (Planning Section Chief) | | Date | Time | |
| JILL JOHNSON | | | MARGE HUTCHINSON | | 08/28/2021 | 2000 | |

Division/Group Assignment List (ICS 204 WF)
Controlled Unclassified Information//Basic

| | | | | | | |
|---|---------|---|---|----------------------------------|-----------------------|------------------|
| 1. Incident Name: | | | 3. | | | |
| WALKER CREEK & CHICKADEE CREEK | | | Branch: | | Division/Group | |
| 2. Operational Period: DAY/NIGHT | | | | | C | |
| Date/Time From: 08/29/2021 0600 SUN | | Date/Time To: 08/30/2021 0600 MON | | | | |
| 4. Operations Personnel | | | | | | |
| OPERATIONS CHIEF | | TONY ENGEL; AARON ROWE JEROMY WILSON (T) | | BRANCH DIRECTOR | | |
| SAFETY OFFICER | | TROY CORN; JACK CATES | | DIVISION/GROUP SUPERVISOR | | BOB HINDS |
| 5. Resources Assigned this Period | | | | | | |
| Strike Team / Task Force / Resource Designator | | LWD | Leader | Number Persons | Drop Off PT./Time | Pick Up PT./Time |
| O-435 SOF2 | | 09/09 | JOSH NORTHRUP | 1 | BASE CAMP/0600 | BASE CAMP/1800 |
| O-450 SOF2 (T) | | 09/02 | PHIL GRAHAM | 1 | BASE CAMP/0600 | BASE CAMP/1800 |
| O-294 TFLD | | 09/02 | SHANNON MOORE | 1 | BASE CAMP/0600 | BASE CAMP/1800 |
| O-377 TFLD | | 09/07 | STEPHEN DECOOK | 1 | BASE CAMP/0600 | BASE CAMP/1800 |
| O-423 HEQB | | 09/09 | KYLE BUCKMILLER | 1 | BASE CAMP/0600 | BASE CAMP/1800 |
| O-457 HEQB (T) | | 09/10 | AARON NELSON | 1 | BASE CAMP/0600 | BASE CAMP/1800 |
| O-9001 HEQB (LOAN) | | 08/30 | JAKE TOWNSEND | 1 | BASE CAMP/0600 | BASE CAMP/1800 |
| O-9002 HEQB (LOAN) | | 09/08 | SKYLER GOODRICH | 1 | BASE CAMP/0600 | BASE CAMP/1800 |
| O-9006 HEQB (LOAN) | | 09/08 | MATT SMITH | 1 | BASE CAMP/0600 | BASE CAMP/1800 |
| O-247 FMOD BROTHERS FIRE LLC | | 08/30 | TOM HOFFMAN | 2 | BASE CAMP/0600 | BASE CAMP/1800 |
| C-78 HC1 BONNEVILLE IHC | | 09/09 | MATTHEW MARK OKRASINSKI | 21 | BASE CAMP/0600 | BASE CAMP/1800 |
| C-69 HC2I DIAMOND FIRE 2B | | 08/31 | BRADLEY EMERY | 20 | BASE CAMP/0600 | BASE CAMP/1800 |
| C-80 HC2 COLVILLE 1 | | 09/08 | DESMOND YAZZIE | 21 | BASE CAMP/0600 | BASE CAMP/1800 |
| C-9003 HC2I HIGHLANDS (LOAN) | | | SETH SCHERTENLEIB | 20 | BASE CAMP/0600 | BASE CAMP/1800 |
| 8. Division/Group Communication Summary | | | | | | |
| Function | Channel | RX Frequency N/W | RX Tone/NAC | TX Frequency N/W | TX Tone/NAC | Mode |
| COMMAND | 1 | 170.0625 | 114.8 | 162.1750 | 114.8 | A |
| COMMAND | 2 | 170.3125 | 114.8 | 167.8375 | 114.8 | A |
| COMMAND | 3 | 170.4500 | 114.8 | 168.1000 | 114.8 | A |
| COMMAND | 4 | 172.5375 | 114.8 | 163.5500 | 114.8 | A |
| TACTICAL | 10 | 166.7750 | 114.8 | 166.7750 | 114.8 | A |
| AIR TO GROUND | 13 | 170.2625 | | 170.2625 | | A |
| 9. Prepared By (Resource Unit Leader) | | | Approved By (Planning Section Chief) | | Date | Time |
| JILL JOHNSON | | | MARGE HUTCHINSON | | 08/28/2021 | 2000 |

Division/Group Assignment List (ICS 204 WF)
Controlled Unclassified Information//Basic

| | | | | | | |
|---|---------|---|---|----------------------------------|---------------------------------------|------------------|
| 1. Incident Name: | | | | 3. | | |
| WALKER CREEK & CHICKADEE CREEK | | | | Branch: | Division/Group C | |
| 2. Operational Period: DAY/NIGHT | | | | | | |
| Date/Time From: 08/29/2021 0600 SUN | | Date/Time To: 08/30/2021 0600 MON | | | | |
| 4. Operations Personnel | | | | | | |
| OPERATIONS CHIEF | | TONY ENGEL; AARON ROWE JEROMY WILSON (T) | | BRANCH DIRECTOR | | |
| SAFETY OFFICER | | TROY CORN; JACK CATES | | DIVISION/GROUP SUPERVISOR | | BOB HINDS |
| 5. Resources Assigned this Period | | | | | | |
| Strike Team / Task Force / Resource Designator | | LWD | Leader | Number Persons | Drop Off PT./Time | Pick Up PT./Time |
| E-255 ENG4 WILD FIRE SERVICES | | 09/07 | STEVE KURVAINK | 3 | BASE CAMP/0600 | BASE CAMP/1800 |
| E-257 ENG5 METHOW RIVER WILD FIRE | | 09/07 | ALEX WHITMAN | 3 | BASE CAMP/0600 | BASE CAMP/1800 |
| E-337 ENG6 THE GENERAL | | 09/10 | PAUL ANDERSON | 2 | BASE CAMP/0600 | BASE CAMP/1800 |
| E-16C WTS2 S PEND OREILLE T33 | | 09/08 | PAUL HAA | 1 | BASE CAMP/0600 | BASE CAMP/1800 |
| E-136 WTS2 OVERWATCH | | 09/08 | ANDY ROMERO | 1 | BASE CAMP/0600 | BASE CAMP/1800 |
| E-12C DOZ2 KENNETH & DIANE SASSE | | 09/01 | BURT SASSE | 2 | BASE CAMP/0600 | BASE CAMP/1800 |
| E-29C DOZ4 GASHO & GASHO | | 08/31 | ANDY GASHO | 1 | BASE CAMP/0600 | BASE CAMP/1800 |
| E-201 DOZ3 HAVILLAH LOGGING CO | | 08/30 | DAVID GOYETTE | 2 | BASE CAMP/0600 | BASE CAMP/1800 |
| E-23C GRD DOUBLE A LOGGING | | 08/31 | SHAWN NIGG | 1 | BASE CAMP/0600 | BASE CAMP/1800 |
| E-14C EXCA WILL LOGGING & CONSTR | | 09/04 | GARY WILLER SR | 1 | BASE CAMP/0600 | BASE CAMP/1800 |
| E-15C EXCA GASHO & GASHO | | 09/03 | NICK MCCULLUM | 2 | BASE CAMP/0600 | BASE CAMP/1800 |
| E-17C FEL1 RIDGELINE FORESTRY | | 09/07 | DARREN GOETZ | 2 | BASE CAMP/0600 | BASE CAMP/1800 |
| E-202 FEL1 HAVILLAH LOGGING | | 08/30 | TOM KERSHNER | 1 | BASE CAMP/0600 | BASE CAMP/1800 |
| E-26 SKG1 WYEAST FORESTRY MANAGEMENT | | 08/30 | BOYD GOLDFINCH | 2 | BASE CAMP/0600 | BASE CAMP/1800 |
| 8. Division/Group Communication Summary | | | | | | |
| Function | Channel | RX Frequency N/W | RX Tone/NAC | TX Frequency N/W | TX Tone/NAC | Mode |
| COMMAND | 1 | 170.0625 | 114.8 | 162.1750 | 114.8 | A |
| COMMAND | 2 | 170.3125 | 114.8 | 167.8375 | 114.8 | A |
| COMMAND | 3 | 170.4500 | 114.8 | 168.1000 | 114.8 | A |
| COMMAND | 4 | 172.5375 | 114.8 | 163.5500 | 114.8 | A |
| TACTICAL | 10 | 166.7750 | 114.8 | 166.7750 | 114.8 | A |
| AIR TO GROUND | 13 | 170.2625 | | 170.2625 | | A |
| 9. Prepared By (Resource Unit Leader) | | | Approved By (Planning Section Chief) | | Date | Time |
| JILL JOHNSON | | | MARGE HUTCHINSON | | 08/28/2021 | 2000 |

Division/Group Assignment List (ICS 204 WF)
Controlled Unclassified Information//Basic

| | | | | | | |
|--|---------|---|---|----------------------------------|---------------------------------------|------------------|
| 1. Incident Name: | | | | 3. | | |
| WALKER CREEK & CHICKADEE CREEK | | | | Branch: | Division/Group C | |
| 2. Operational Period: DAY/NIGHT | | | | | | |
| Date/Time From: 08/29/2021 0600 SUN | | Date/Time To: 08/30/2021 0600 MON | | | | |
| 4. Operations Personnel | | | | | | |
| OPERATIONS CHIEF | | TONY ENGEL; AARON ROWE JEROMY WILSON (T) | | BRANCH DIRECTOR | | |
| SAFETY OFFICER | | TROY CORN; JACK CATES | | DIVISION/GROUP SUPERVISOR | | BOB HINDS |
| 5. Resources Assigned this Period | | | | | | |
| Strike Team / Task Force / Resource Designator | | LWD | Leader | Number Persons | Drop Off PT./Time | Pick Up PT./Time |
| E-333 SKG1 TIGER TRUCKING | | 09/10 | CLINTON GLOVER | 2 | BASE CAMP/0600 | BASE CAMP/1800 |
| E-18C SKD2 RIDGELINE FORESTRY | | 08/30 | MICHAEL GOETZ | 2 | BASE CAMP/0600 | BASE CAMP/1800 |
| E-21C SKD2 DOUBLE A LOGGING 1 | | 09/08 | RYAN HENDERSON | 1 | BASE CAMP/0600 | BASE CAMP/1800 |
| E-205 SKD2 HAVILLAH LOGGING | | 09/10 | BRANDON SUTTON | 1 | BASE CAMP/0600 | BASE CAMP/1800 |
| E-204 MAST HAVILLAH LOGGIN | | 09/11 | RICK CLOUGH | 1 | BASE CAMP/0600 | BASE CAMP/1800 |
| E-353 LOG PROCESSOR RIDGELINE FORESTRY | | 09/11 | | 2 | BASE CAMP/0600 | BASE CAMP/1800 |
| E-55 AMBU PEND OREILLE AMBU 2 (ALS) | | 09/11 | HASTINGS | 2 | BASE CAMP/0600 | BASE CAMP/1800 |
| O-273 EMPF | | 09/06 | KEVIN SMITH | 1 | BASE CAMP/0600 | BASE CAMP/1800 |
| O-160 EMTF | | 09/01 | MARA LANDRUM | 1 | BASE CAMP/0600 | BASE CAMP/1800 |
| 6. Control Operations/Work Assignments: | | | | | | |
| <p>TASK: Secure primary firelines by constructing direct lines where possible, and burning small blocks when conditions allow. PURPOSE: Minimize acres burned with the best chances of success for containing the fire. END STATE: Fireline in the correct location with the best chances of success for containing the fire.</p> <p>TASK: Complete road prep and identification of alternate and contingency fireline locations. PURPOSE: Identify fireline placement locations. END STATE: Fireline with the highest probability of success is identified.</p> | | | | | | |
| 7. Special Instructions: | | | | | | |
| Division breakout will be at DP-145. | | | | | | |
| 8. Division/Group Communication Summary | | | | | | |
| Function | Channel | RX Frequency N/W | RX Tone/NAC | TX Frequency N/W | TX Tone/NAC | Mode |
| COMMAND | 1 | 170.0625 | 114.8 | 162.1750 | 114.8 | A |
| COMMAND | 2 | 170.3125 | 114.8 | 167.8375 | 114.8 | A |
| COMMAND | 3 | 170.4500 | 114.8 | 168.1000 | 114.8 | A |
| COMMAND | 4 | 172.5375 | 114.8 | 163.5500 | 114.8 | A |
| TACTICAL | 10 | 166.7750 | 114.8 | 166.7750 | 114.8 | A |
| AIR TO GROUND | 13 | 170.2625 | | 170.2625 | | A |
| 9. Prepared By (Resource Unit Leader) | | | Approved By (Planning Section Chief) | | Date | Time |
| JILL JOHNSON | | | MARGE HUTCHINSON | | 08/28/2021 | 2000 |

Division/Group Assignment List (ICS 204 WF)
Controlled Unclassified Information//Basic

| | | | | | | |
|---|---------|---|---|----------------------------------|-----------------------|---------------------------------------|
| 1. Incident Name: | | | 3. | | | |
| WALKER CREEK & CHICKADEE CREEK | | | Branch: | | Division/Group | |
| 2. Operational Period: DAY/NIGHT | | | | | K/O | |
| Date/Time From: 08/29/2021 0600 SUN | | Date/Time To: 08/30/2021 0600 MON | | | | |
| 4. Operations Personnel | | | | | | |
| OPERATIONS CHIEF | | TONY ENGEL; AARON ROWE JEROMY WILSON (T) | | BRANCH DIRECTOR | | |
| SAFETY OFFICER | | TROY CORN; JACK CATES | | DIVISION/GROUP SUPERVISOR | | CHET DIERINGER SAM STEINSHOUER (T) |
| 5. Resources Assigned this Period | | | | | | |
| Strike Team / Task Force / Resource Designator | | LWD | Leader | Number Persons | Drop Off PT./Time | Pick Up PT./Time |
| O-435 SOFR | | 09/09 | JOSH NORTHRUP | 1 | BASE CAMP/0600 | BASE CAMP/1800 |
| O-450 SOF2 (T) | | 09/02 | PHIL GRAHAM | 1 | BASE CAMP/0600 | BASE CAMP/1800 |
| O-359 TFLD (T) | | 09/06 | RYAN ROMERO | 1 | BASE CAMP/0600 | BASE CAMP/1800 |
| O-376 TFLD | | 09/05 | BENNY MENDOZA | 1 | BASE CAMP/0600 | BASE CAMP/1800 |
| O-432 HEQB | | 09/09 | DAVID MORRILL | 1 | BASE CAMP/0600 | BASE CAMP/1800 |
| O-250 FMOD FALLER MODULE | | 08/30 | WADE GIGUERE | 2 | BASE CAMP/0600 | BASE CAMP/1800 |
| C-67 HC2I SRV #12 | | 08/29 | JULIAN JACOBO | 18 | BASE CAMP/0600 | BASE CAMP/1800 |
| C-70 HC2I UMA #1 | | 08/31 | NICK LACEY | 18 | BASE CAMP/0600 | BASE CAMP/1800 |
| C-71 HC2 TORRES CONTRACTING CREW-11 | | 09/01 | EMILIO MELGAREJO | 20 | BASE CAMP/0600 | BASE CAMP/1800 |
| C-81 HC2 LAVA RIVER FORESTRY 4 | | 09/09 | JOSH MARTINEZ | 20 | BASE CAMP/0600 | BASE CAMP/1800 |
| E- ENG5 DNR ENG (LOAN) | | | | 3 | BASE CAMP/0600 | BASE CAMP/1800 |
| E- ENG5 DNR ENG (LOAN) | | | | 3 | BASE CAMP/0600 | BASE CAMP/1800 |
| E- ENG5 DNR ENG (LOAN) | | | | 3 | BASE CAMP/0600 | BASE CAMP/1800 |
| E- ENG5 DNR ENG (LOAN) | | | | 3 | BASE CAMP/0600 | BASE CAMP/1800 |
| E- ENG5 DNR ENG (LOAN) | | | | 3 | BASE CAMP/0600 | BASE CAMP/1800 |
| 8. Division/Group Communication Summary | | | | | | |
| Function | Channel | RX Frequency N/W | RX Tone/NAC | TX Frequency N/W | TX Tone/NAC | Mode |
| COMMAND | 1 | 170.0625 | 114.8 | 162.1750 | 114.8 | A |
| COMMAND | 2 | 170.3125 | 114.8 | 167.8375 | 114.8 | A |
| COMMAND | 3 | 170.4500 | 114.8 | 168.1000 | 114.8 | A |
| COMMAND | 4 | 172.5375 | 114.8 | 163.5500 | 114.8 | A |
| TACTICAL | 7 | 168.2000 | 114.8 | 168.2000 | 114.8 | A |
| AIR TO GROUND | 13 | 170.2625 | | 170.2625 | | A |
| 9. Prepared By (Resource Unit Leader) | | | Approved By (Planning Section Chief) | | Date | Time |
| JILL JOHNSON | | | MARGE HUTCHINSON | | 08/28/2021 | 2000 |

Division/Group Assignment List (ICS 204 WF)
Controlled Unclassified Information//Basic

| | | | | | | |
|---|---------|---|---|----------------------------------|---|---------------------------------------|
| 1. Incident Name: | | | | 3. | | |
| WALKER CREEK & CHICKADEE CREEK | | | | Branch: | Division/Group K/O | |
| 2. Operational Period: DAY/NIGHT | | | | | | |
| Date/Time From: 08/29/2021 0600 SUN | | Date/Time To: 08/30/2021 0600 MON | | | | |
| 4. Operations Personnel | | | | | | |
| OPERATIONS CHIEF | | TONY ENGEL; AARON ROWE JEROMY WILSON (T) | | BRANCH DIRECTOR | | |
| SAFETY OFFICER | | TROY CORN; JACK CATES | | DIVISION/GROUP SUPERVISOR | | CHET DIERINGER SAM STEINSHOUER (T) |
| 5. Resources Assigned this Period | | | | | | |
| Strike Team / Task Force / Resource Designator | LWD | Leader | Number Persons | Drop Off PT./Time | Pick Up PT./Time | |
| E-6C WTS2 TOLLEFSON CONSTR | 09/06 | EVAN BEVIER | 1 | BASE CAMP/0600 | BASE CAMP/1800 | |
| E-22 WTS2 RAINS CONTRACTING | 08/29 | JIM HUTTON | 1 | BASE CAMP/0600 | BASE CAMP/1800 | |
| E-172 WTS2 SC RIVERS LMS | 08/27 | TIM SERIVER | 1 | BASE CAMP/0600 | BASE CAMP/1800 | |
| E-176 WTS2 BTNG WILDFIRE | 08/29 | LUKE JOHNSON | 1 | BASE CAMP/0600 | BASE CAMP/1800 | |
| E-177 WTS1 DOUBLE A LOGGING | 08/26 | TONY BROWN | 1 | BASE CAMP/0600 | BASE CAMP/1800 | |
| E-26C DOZ3 DOUBLE A LOGGING | 08/29 | TYLER ACORD | 1 | BASE CAMP/0600 | BASE CAMP/1800 | |
| E-27C DOZ3 WILL LOGGING & CONSTR | 08/31 | GARY WILL JR | 1 | BASE CAMP/0600 | BASE CAMP/1800 | |
| E-24C EXCA DOUBLE A LOGGING | 08/29 | JERIMIAH BOARDWELL | 1 | BASE CAMP/0600 | BASE CAMP/1800 | |
| E-25C EXCA DOUBLE A LOGGING | 09/09 | TOM ACORD | 1 | BASE CAMP/0600 | BASE CAMP/1800 | |
| E-7C FEL1 DOUBLE A LOGGING | 09/10 | BRIAN ACORD | 1 | BASE CAMP/0600 | BASE CAMP/1800 | |
| E-138 SKG1 SOFT TRACK ATTACK | 09/04 | JOSH COVEY | 2 | BASE CAMP/0600 | BASE CAMP/1800 | |
| E-197 SKG3 TUNK CREEK LLC | 09/04 | DYLAN GREEN | 2 | BASE CAMP/0600 | BASE CAMP/1800 | |
| E-22C SKD2 DOUBLE A LOGGING | 09/10 | RYAN ANDERSON | 1 | BASE CAMP/0600 | BASE CAMP/1800 | |
| E-112 SKDS SOFTTRACK ATTACK | 09/05 | PATRICK PRICE | 2 | BASE CAMP/0600 | BASE CAMP/1800 | |
| 8. Division/Group Communication Summary | | | | | | |
| Function | Channel | RX Frequency N/W | RX Tone/NAC | TX Frequency N/W | TX Tone/NAC | Mode |
| COMMAND | 1 | 170.0625 | 114.8 | 162.1750 | 114.8 | A |
| COMMAND | 2 | 170.3125 | 114.8 | 167.8375 | 114.8 | A |
| COMMAND | 3 | 170.4500 | 114.8 | 168.1000 | 114.8 | A |
| COMMAND | 4 | 172.5375 | 114.8 | 163.5500 | 114.8 | A |
| TACTICAL | 7 | 168.2000 | 114.8 | 168.2000 | 114.8 | A |
| AIR TO GROUND | 13 | 170.2625 | | 170.2625 | | A |
| 9. Prepared By (Resource Unit Leader) | | | Approved By (Planning Section Chief) | | Date | Time |
| JILL JOHNSON | | | MARGE HUTCHINSON | | 08/28/2021 | 2000 |

Division/Group Assignment List (ICS 204 WF)
Controlled Unclassified Information//Basic

| | | | | | | |
|--|---------|---|---|----------------------------------|---|---------------------------------------|
| 1. Incident Name: | | | | 3. | | |
| WALKER CREEK & CHICKADEE CREEK | | | | Branch: | Division/Group K/O | |
| 2. Operational Period: DAY/NIGHT | | | | | | |
| Date/Time From: 08/29/2021 0600 SUN | | Date/Time To: 08/30/2021 0600 MON | | | | |
| 4. Operations Personnel | | | | | | |
| OPERATIONS CHIEF | | TONY ENGEL; AARON ROWE JEROMY WILSON (T) | | BRANCH DIRECTOR | | |
| SAFETY OFFICER | | TROY CORN; JACK CATES | | DIVISION/GROUP SUPERVISOR | | CHET DIERINGER SAM STEINSHOUER (T) |
| 5. Resources Assigned this Period | | | | | | |
| Strike Team / Task Force / Resource Designator | | LWD | Leader | Number Persons | Drop Off PT./Time | Pick Up PT./Time |
| E-140 SKDS SPENCER LOGGING LLC | | 09/05 | COLE SPENCER | 2 | BASE CAMP/0600 | BASE CAMP/1800 |
| E-203 MAST HAVILLAH LOGGIN | | 08/30 | TIM KERSHNER | 1 | BASE CAMP/0600 | BASE CAMP/1800 |
| E-354 LOG DOUBLE A LOG LOADER | | 09/11 | | 2 | BASE CAMP/0600 | BASE CAMP/1800 |
| E-355 LOG PROCESSOR DOUBLE A | | 09/11 | | 2 | BASE CAMP/0600 | BASE CAMP/1800 |
| O-220 EMTF | | 09/04 | RYAN SATCHER | 1 | BASE CAMP/0600 | BASE CAMP/1800 |
| O-272 EMPF | | 09/03 | MICHAEL COOPER | 1 | BASE CAMP/0600 | BASE CAMP/1800 |
| 6. Control Operations/Work Assignments: | | | | | | |
| <p>Task Secure and mop up fire perimeter between C/K break and O/C break; consider predicted weather, seasonality and likelihood of future fire progression beyond the current fire perimeter.</p> <p>Purpose Fire is contained within the current fire perimeter.</p> <p>End State Fire is controlled within the current fire perimeter between C/K break and O/C break.</p> | | | | | | |
| 7. Special Instructions: | | | | | | |
| Division breakout will be at DP-140. | | | | | | |
| 8. Division/Group Communication Summary | | | | | | |
| Function | Channel | RX Frequency N/W | RX Tone/NAC | TX Frequency N/W | TX Tone/NAC | Mode |
| COMMAND | 1 | 170.0625 | 114.8 | 162.1750 | 114.8 | A |
| COMMAND | 2 | 170.3125 | 114.8 | 167.8375 | 114.8 | A |
| COMMAND | 3 | 170.4500 | 114.8 | 168.1000 | 114.8 | A |
| COMMAND | 4 | 172.5375 | 114.8 | 163.5500 | 114.8 | A |
| TACTICAL | 7 | 168.2000 | 114.8 | 168.2000 | 114.8 | A |
| AIR TO GROUND | 13 | 170.2625 | | 170.2625 | | A |
| 9. Prepared By (Resource Unit Leader) | | | Approved By (Planning Section Chief) | | Date | Time |
| JILL JOHNSON | | | MARGE HUTCHINSON | | 08/28/2021 | 2000 |

Division/Group Assignment List (ICS 204 WF)
Controlled Unclassified Information//Basic

| | | | | | | |
|---|---------|---|---|----------------------------------|-----------------------|---------------------------------------|
| 1. Incident Name: | | | 3. | | | |
| WALKER CREEK & CHICKADEE CREEK | | | Branch: | | Division/Group | |
| 2. Operational Period: DAY/NIGHT | | | | | NIGHT | |
| Date/Time From: 08/29/2021 0600 SUN | | Date/Time To: 08/30/2021 0600 MON | | | | |
| 4. Operations Personnel | | | | | | |
| OPERATIONS CHIEF | | TONY ENGEL; AARON ROWE JEROMY WILSON (T) | | BRANCH DIRECTOR | | |
| SAFETY OFFICER | | TROY CORN; JACK CATES | | DIVISION/GROUP SUPERVISOR | | DANIEL GLEASON SUSAN GREENLEAF (T) |
| 5. Resources Assigned this Period | | | | | | |
| Strike Team / Task Force / Resource Designator | | LWD | Leader | Number Persons | Drop Off PT./Time | Pick Up PT./Time |
| O-316 SOF2 (T) | | 08/29 | DEAN KIEFER | 1 | BASE CAMP/1800 | BASE CAMP/0600 |
| O-304 STEN (T) | | 08/31 | PEDRO OLAGUE | 1 | BASE CAMP/1800 | BASE CAMP/0600 |
| E-14 ENG5 J3 CONTRACTING | | 08/18 | TAYLOR EASLEY | 3 | BASE CAMP/1800 | BASE CAMP/0600 |
| E-19 ENG5 LL MEADOW WF (R&R) | | 09/03 | DAMIAN RAMON | 3 | BASE CAMP/1800 | BASE CAMP/0600 |
| E-115 ENG3 OUTBACK FIREFIGHTING | | 08/25 | SEAN WEST | 3 | BASE CAMP/1800 | BASE CAMP/0600 |
| E-116 ENG6 TORCH FIRE AND SECURITY | | 09/08 | TRINITY KRIVANEC | 3 | BASE CAMP/1800 | BASE CAMP/0600 |
| E-122 ENG6 SMITHFIELD FD E640 | | 09/01 | DUSTIN HOOTON | 2 | BASE CAMP/1800 | BASE CAMP/0600 |
| E-156 WTS2 H & H ENTERPRISES | | 09/03 | MARK ANDERSON | 1 | BASE CAMP/1800 | BASE CAMP/0600 |
| E-114 SKDS SOFT TRACK ATTACK | | 08/30 | STEVE BONNER | 2 | BASE CAMP/1800 | BASE CAMP/0600 |
| O-462 EMPF | | 09/11 | JOSH COUNTS | 1 | BASE CAMP/1800 | BASE CAMP/0600 |
| 8. Division/Group Communication Summary | | | | | | |
| Function | Channel | RX Frequency N/W | RX Tone/NAC | TX Frequency N/W | TX Tone/NAC | Mode |
| COMMAND | 1 | 170.0625 | 114.8 | 162.1750 | 114.8 | A |
| COMMAND | 2 | 170.3125 | 114.8 | 167.8375 | 114.8 | A |
| COMMAND | 3 | 170.4500 | 114.8 | 168.1000 | 114.8 | A |
| COMMAND | 4 | 172.5375 | 114.8 | 163.5500 | 114.8 | A |
| TACTICAL | 10 | 166.7750 | 114.8 | 166.7750 | 114.8 | A |
| AIR TO GROUND | 13 | 170.2625 | | 170.2625 | | A |
| AIR TO GROUND | 15 | 168.1375 | | 168.1375 | | A |
| 9. Prepared By (Resource Unit Leader) | | | Approved By (Planning Section Chief) | | Date | Time |
| JILL JOHNSON | | | MARGE HUTCHINSON | | 08/28/2021 | 2000 |

Division/Group Assignment List (ICS 204 WF)
Controlled Unclassified Information//Basic

| | | | | | | |
|--|---------|---|---|----------------------------------|-----------------------|---------------------------------------|
| 1. Incident Name: | | | 3. | | | |
| WALKER CREEK & CHICKADEE CREEK | | | Branch: | | Division/Group | |
| 2. Operational Period: DAY/NIGHT | | | | | NIGHT | |
| Date/Time From: 08/29/2021 0600 SUN | | Date/Time To: 08/30/2021 0600 MON | | | | |
| 4. Operations Personnel | | | | | | |
| OPERATIONS CHIEF | | TONY ENGEL; AARON ROWE JEROMY WILSON (T) | | BRANCH DIRECTOR | | |
| SAFETY OFFICER | | TROY CORN; JACK CATES | | DIVISION/GROUP SUPERVISOR | | DANIEL GLEASON SUSAN GREENLEAF (T) |
| 5. Resources Assigned this Period | | | | | | |
| Strike Team / Task Force / Resource Designator | | LWD | Leader | Number Persons | Drop Off PT./Time | Pick Up PT./Time |
| | | | | | | |
| | | | | | | |
| 6. Control Operations/Work Assignments: | | | | | | |
| <p>Task Patrol Chickadee and Walker incidents; secure fire line in areas with recent burn out operations as needed; mop up areas that pose threat to structures.</p> <p>Purpose Limit fire spread outside of established control lines; limit threat to structures.</p> <p>End State Fire is contained within established control lines; structures are not threatened.</p> | | | | | | |
| 7. Special Instructions: | | | | | | |
| Division breakout will be at breezeway. | | | | | | |
| 8. Division/Group Communication Summary | | | | | | |
| Function | Channel | RX Frequency N/W | RX Tone/NAC | TX Frequency N/W | TX Tone/NAC | Mode |
| COMMAND | 1 | 170.0625 | 114.8 | 162.1750 | 114.8 | A |
| COMMAND | 2 | 170.3125 | 114.8 | 167.8375 | 114.8 | A |
| COMMAND | 3 | 170.4500 | 114.8 | 168.1000 | 114.8 | A |
| COMMAND | 4 | 172.5375 | 114.8 | 163.5500 | 114.8 | A |
| TACTICAL | 10 | 166.7750 | 114.8 | 166.7750 | 114.8 | A |
| AIR TO GROUND | 13 | 170.2625 | | 170.2625 | | A |
| AIR TO GROUND | 15 | 168.1375 | | 168.1375 | | A |
| 9. Prepared By (Resource Unit Leader) | | | Approved By (Planning Section Chief) | | Date | Time |
| JILL JOHNSON | | | MARGE HUTCHINSON | | 08/28/2021 | 2000 |

AIR OPERATIONS SUMMARY

Controlled Unclassified Information//Basic

PREPARED BY: Greg Reser AOB (t)

PREPARED DATE/TIME: 8/28/2021 1900

| | | | | | |
|---|--|--|------------------------|--|----------|
| 1. INCIDENT NAME: Walker Cr. /Chickadee Cr. | | 2. OPERATIONAL PERIOD DATE: 8/29/21 START TIME: 0800 END TIME: 2000 SUNRISE: 0610 SUNSET: 1947 Pumpkin 2017 | | | |
| 3. REMARKS (Safety Notes, Hazards, Air Operations Special Equipment, etc.): | | | | 4. Ready Alert aircraft: Order ALS air ambulance (Lifeflight) through NEWICC Dispatch. Closest ALS helicopters are out of Brewster, WA with a 25 min flight time to the Walker fire. <u>Special remarks:</u> Wenatchee Short Haul 3JR at Lake Chelan, WA Airport. Response time roughly 45min to incident. Order thru AOB. Review Military Training Route activity and status each morning prior to missions. <u>Aviation Support Equipment:</u> WTS2 E-227 @ Omak Helibase Helibase Support Trailer E-36 @ Omak Helibase <u>Email cost to:</u> WalkerSpur.Aviation@gmail.com | |
| 5. Helibase location Omak (OMK) 48-27.864617N 119-31.083250W Elev: 1,304' Base Phone: 360-489-7654 Unicom: OMK: 122.8 Tonasket W01: 122.9 | | 6. <u>TFR information</u> Walker 1/9445 9NM SFC-9500FT Chickadee 1/9449 7NM SFC-9500FT | | | |
| 7. FIXED WING | | SEATS/Fireboss: Available out of Omak. Order through NEWICC. ATGS Platform: Order as needed through NEWICC. | | | |
| 8. PERSONNEL | | Phone | 9. FREQUENCIES | FM | AM |
| AOBD – Mike Davis | | 509-699-9350 | A/G Walker Pri | 168.1375 | |
| AOBD (t) - Greg Reser | | 307-350-2202 | A/G Walker Sec | 169.5625 | |
| HEBM – Eric Bader | | 303-704-1164 | A/G Chickadee Pri | 170.2625 | |
| | | | TFR 1/9445 Walker | | 118.125 |
| | | | A/A Walker Rotor | | 126.3500 |
| | | | TFR 1/9449 Chickadee | | 118.775 |
| NE Washington Dispatch (NEWICC) | | 509-685-6900 | A/A Chickadee Rotor | | 126.6250 |
| | | | A/G Ignitions Discreet | 167.8375 | |
| Colville UAO Ben Renfro | | 541-589-0452 | DNR Flight Follow | 151.3475 Tx(136.5) | |
| | | | Air Guard | 168.6250 Tx(110.9) | |

| 10. Helicopters | TY | MAKE/MODEL | BASE | START | AVAIL | REMARKS |
|-----------------------------|----|------------|------|-------|-------|------------------|
| N24CK (A-183) / Gelhausen | 1 | S-61A | OMK | 0800 | 0830 | EU / Tanked |
| N7CU (A-174) / Hogue | 1 | CH-47D | OMK | 0800 | 0830 | EU / Bucket |
| N58HA (A-199) / Olson | 2 | UH-1 | OMK | 0800 | 0830 | CWN / Restricted |
| N12HX (A-204) / Lookingback | 3 | Bell 407 | OMK | 0800 | 0830 | EU / HMGB +9 |
| | | | | | | |
| | | | | | | |

Mission Requests:

Air Attack: Requested through NEWICC as needed.

Lead Plane/Airtankers: Requested through NEWICC as needed.

Helicopters: Requested through Omak Helibase.

Approved By: Mike Davis AOB

INCIDENT RADIO COMMUNICATIONS PLAN (ICS 205)

Controlled Unclassified Information//Basic

| | | | |
|--------------------------------|--------------------------------|---|---|
| 1. Incident Name: | 2. Date/Time Prepared: | 3. Operational Period: DAY/NIGHT | |
| WALKER CREEK & CHICKADEE CREEK | Date: 08/28/2021 Time: 2000 | Date/Time From: 08/29/2021 0600 SUN | Date/Time To: 08/30/2021 0600 MON |

4. Basic Radio Channel Use:

| Zone Group | Ch # | Function | Channel Name/Trunked Radio System Talkgroup | Assignment | RX Freq | RX Tone/NAC | TX Freq | TX Tone/NAC | Mode (A,D, or M) | Remarks |
|------------|------|---------------|---|---------------|----------|-------------|----------|-------------|------------------|------------------------------|
| | 1 | COMMAND | CMD1 | ALL RESOURCES | 170.0625 | 114.8 | 162.1750 | 114.8 | A | LINKED TO CMD2, CMD3 & CMD4 |
| | 2 | COMMAND | CMD2 | ALL RESOURCES | 170.3125 | 114.8 | 167.8375 | 114.8 | A | LINKED TO CMD1, CMD 3 & CMD4 |
| | 3 | COMMAND | CMD3 | ALL RESOURCES | 170.4500 | 114.8 | 168.1000 | 114.8 | A | LINKED TO CMD1, CMD2 & CMD4 |
| | 4 | COMMAND | CMD 4 | ALL RESOURCES | 172.5375 | 114.8 | 163.5500 | 114.8 | A | LINKED TO CMD1, CMD2 & CMD3 |
| | 5 | COMMAND | DNR TON | ALL RESOURCES | 159.3675 | 118.8 | 151.2575 | 156.7 | A | DNR TONASKET DISPATCH |
| | 6 | TACTICAL | TAC 6 | DIV A / F | 168.0500 | 114.8 | 168.0500 | 114.8 | A | NIFC TAC |
| | 7 | TACTICAL | TAC 7 | DIV O / K | 168.2000 | 114.8 | 168.2000 | 114.8 | A | NIFC TAC |
| | 8 | TACTICAL | TAC 8 | DIV H | 168.6000 | 114.8 | 168.6000 | 114.8 | A | NIFC TAC |
| | 9 | TACTICAL | TAC 9 | DIV T | 166.7250 | 114.8 | 166.7250 | 114.8 | A | NIFC TAC |
| | 10 | TACTICAL | TAC 10 | DIV C/NIGHT | 166.7750 | 114.8 | 166.7750 | 114.8 | A | NIFC TAC |
| | 11 | TACTICAL | TAC 11 | DIV Q | 168.2500 | 114.8 | 168.2500 | 114.8 | A | NIFC TAC |
| | 12 | TACTICAL | RED NET | ALL RESOURCES | 153.8300 | | 153.8300 | 156.7 | A | EMS AMBU/AIR UNITS |
| | 13 | AIR TO GROUND | A/G CHICK | A/G CHICKADEE | 170.2625 | | 170.2625 | | A | NIFC A/G |
| | 14 | AIR TO GROUND | A/G SECONDARY | A/G SECONDARY | 169.5625 | | 169.5625 | | A | NIFC A/G |
| | 15 | AIR TO GROUND | A/G WALKER | A/G WALKER | 168.1375 | | 168.1375 | | A | NIFC A/G |
| | 16 | AIR GUARD | AIRGUARD | ALL RESOURCES | 168.6250 | | 168.6250 | 110.9 | A | EMERGENCY USE ONLY |

5. Special Instructions: There will be a Clone today!! CLONE Label: WALKER082821. ON THE ZONE LABEL OF KNG/BKR RADIO; FOR DPH PRESS AND HOLD THE # KEY AND LOOK AT DISPLAY

| | | |
|---|--------------------|--------------------------------|
| 6. Prepared By (Communications Unit Leader) | Name: MISSY PARKER | Signature: <i>Missy Parker</i> |
| ICS 205 | IAP Page | Date/Time: 08/28/2021 2000 |

Controlled Unclassified Information//Basic

NW Team 12 cares about the health and safety of all of our firefighting resources. We understand that many of you will go from this assignment home to your families or on to other assignments. We appreciate the effort you all have put into maintaining the COVID mitigation standards while here on the incident. This will help prevent viral spread in camp and on the line. To support and continue this prevention, NW Team 12 is providing COVID-19 PCR testing for all resources assigned to the Walker Creek/Chickadee Fires. These tests will be provided at designated stations near camps and spike locations for the convenience of firefighting resources free of charge.

Forms to sign up for the PCR testing at your location will be distributed ahead of testing date. In the event of a positive test, there are plans in place to keep firefighters working while safely isolated from others if they have mild or no symptoms. We encourage everyone assigned to the fire to sign up for testing so you can travel home or on to your next assignment without worry of spreading the virus. We thank you for your service on these and other fires and wish you continued good health and productivity this fire season.

We will start offering testing Monday in a scheduled format. Branch 2 will be the first location that will have testing available to you. Tuesday Branch 3 will have testing available followed by Branch 1 on Wednesday. You will need to fill out the paperwork one day prior to testing this will streamline the process. Support personnel in the Tonasket camp will also be scheduled.

We are doing our best to minimize risk and exposure to you and your families as well as the firefighters. Please consider being tested to protect your self's and others. NW IMT 12 will be testing also.

Thank you for all you are doing.

Jeff Dimke

Incident Commander NW IMT 12



Okanogan County Public Health

<http://www.okanogancountv.org/ocph>

1234 South 2nd Avenue
P.O. Box 231
Okanogan, WA 98840
(509) 422-7140
TDD (800) 833-6388

August 28, 2021

Due to the current outbreak of COVID-19 within the Walker Creek/Chickadee Fire camp and in joint efforts to stop the spread of the virus, OCPH advises all fire personnel and contractors receive covid-19 PCR testing before leaving the incident.

Lifeline will provide testing. Please let me know if you have any questions.

Thank you for your cooperation,

Lauri Jones, MN

ljones@co.okanogan.wa.us

509-422-7158

WALKER CREEK FIRE DEMOB LIST

Sunday August 29, 2021

DEMOB INSTRUCTIONS

Paperless and electronic demobilization will be used to the extent possible for all resources. **PLEASE LOOK closely at the Fire Name and Resource Number.** All finance documents will be emailed and signed virtually. Ensure all Final CTR's and Shift Tickets have been submitted to Finance the night before your demob day. Please be **PATIENT** as the phone lines are limited the and it takes a little longer for the virtual process.

DEMOB STEPS

(Must Be Done In Order)

1. If you have any items checked out by Supply and Communications, proceed to those areas to turn in equipment. If you don't have any items checked out, proceed to NEXT STEP.
2. If you were inspected upon arrival or need a No Claims/No Comp receipt, check out with Ground Support. If this does not apply, proceed to NEXT STEP.
3. Call Finance at 509-423-6011 or 509-433-1115 or 509-531-7418 to finalize paperwork.
4. Call DMOB at 206-473-1425 or 509-432-6143 to complete the process to be released.

***** CHICKADEE CREEK *****

EQUIPMENT

| | | | |
|-------|------|------|-----------------------|
| E-8c | 0630 | ENG6 | SILVER NICKEL LOGGING |
| E-13c | 0645 | WTS2 | BOB MCDANIEL LOGGING |

***** WALKER CREEK *****

CREWS

| | | | |
|------|------|------|-----------------|
| C-26 | 0600 | HC2I | TONASKET (LOAN) |
| C-3 | 1200 | CC | FORT APACHE #7 |

EQUIPMENT

| | | | |
|-------|------|------|-------------------------|
| E-184 | 0600 | ENG6 | SILVER TIP FORESTRY |
| E-174 | 0600 | WTS2 | STOTTS CONSTRUCTION |
| E-162 | 0615 | ENG6 | COWLITZ 2 BR-21 |
| E-166 | 0615 | ENG5 | COWLITZ COUNTY |
| E-143 | 0615 | FEL1 | TJ LOGGING |
| E-124 | 0630 | ENG6 | METHOW RIVER |
| E-164 | 0645 | ENG6 | WAHIAKUM 4 BRUSH 405 |
| E-165 | 0645 | ENG6 | WAHIAKUM 4 BRUSH 404 |
| E-185 | 0700 | ENG6 | AEGIS LOGISTICS |
| E-186 | 0700 | ENG6 | ENGINE T6 AEGIS |
| E-167 | 0900 | ENG3 | BENTON FD 1 E1135 |
| E-168 | 0900 | ENG5 | BRUSH 1-2 WEST THURSTON |
| E-170 | 0900 | ENG3 | EAST OLYMPIA FD |
| E-171 | 0900 | ENG6 | ENGINE T6 BR95 |

OVERHEAD

| | | | |
|----------|------|------|----------------------|
| O-445 | 0600 | DIVS | NIELSEN, SCOTT |
| O-222 | 0600 | STEN | STICH, KURT |
| O-441 | 0600 | DIVS | ZIEGLER, ADAM |
| O-249 | 0615 | FMOD | SWEDBERG CONTRACTING |
| O-223 | 0615 | STEN | HODNOT, STU |
| O-448 | 0615 | DIVS | MEGEL, MICHAEL |
| O-313.11 | 0630 | DIVS | ZIEGLER, JONATHAN |
| O-211 | 0630 | EMTF | BARWELL, CODY |
| O-313.61 | 0630 | EMPF | LOWRY, RONALD |
| O-313.34 | 0645 | OSC2 | KIDD, BEAU |
| O-224 | 0900 | STEN | DRAKE, NATHAN |

THERE WILL BE NO ADDITIONAL CREW SWAPS MOVING FORWARD AS THE EQUIPMENT WILL JUST TIME OUT WITH CURRENT OPERATOR. EXTENSIONS WILL BE ALLOWED WITH THE APPROVAL OF OPERATIONS.



Okanogan County Public Health

1234 South 2nd Avenue
P.O. Box 231
Okanogan, WA 98840
(509) 422-7140
TDD (800) 833-6388

August 28, 2021

Due to the current outbreak of COVID-19 within the Walker Creek/Chickadee Fire camp and in joint efforts to stop the spread of the virus, OCPH advises all fire personnel and contractors receive covid-19 PCR testing before leaving the incident.

Lifeline will provide testing. Please let me know if you have any questions.

Thank you for your cooperation,

Lauri Jones, MN

ljones@co.okanogan.wa.us

509-422-7158



Northwest Incident Management Team 12 COVID Mitigation Module Jeff Dimke, Incident Commander

We thank you for your service on the Walker Creek and Chickadee Fires. According to the recommendation of Okanogan County Public Health, we have made COVID-19 PCR testing available to all resources assigned to these fires. We strongly encourage all personnel to utilize this testing resource before departing the fire to ensure the safety of your families, community, and co-workers. NW Team 12 also asks that you follow the guidelines provided as you travel home or to your next assignment to ensure your swift integration back into our firefighting forces. We look forward to seeing you on the line once again. Let us know if there is any way that we can support you in this process.

Sincerely,

Jeff Dimke, Incident Commander
NW Team 12

Liv Stecker, Health Liaison
NW Team 12
livia_stecker@firenet.gov

Lauri Jones
Okanogan County Public Health
ljones@co.okanogan.wa.us

COVID-19 DEMOB MESSAGE

Our concern for your health and safety doesn't stop when you leave the incident. In addition to driving safely, it's important to continue monitoring your health. The amount of energy you spent while fighting this fire will limit your body's ability to fight off an infection. A process is in place to provide appropriate care for fire personnel who have been determined to have been exposed to, developed symptoms of, or have a confirmed diagnosis of COVID-19. This process includes evaluation, testing as appropriate, quarantine and/or isolation, including working isolation for cases with mild or no symptoms, and patient care as deemed necessary following CDC guidelines and guidance from the local health jurisdiction. The responsible agencies and NW Team 12 have offered COVID-19 PCR testing to all resources assigned to the Walker Creek and Chickadee Fires. We strongly encourage everyone assigned to these incidents to avail themselves of this testing before departing the fire. If you choose not to be tested, it is imperative that you remain vigilant in monitoring for symptoms moving forward.

As you travel to your next destination, please:

- Limit the number of stops between the fire and your destination. If you do stop, remember to wear a face covering to avoid exposure. Please document any location where you stopped for contact tracing purposes;
- If there are two or more people in the vehicle, please remember to wear a face covering to create social distancing and limit exposure to someone who may be sick;
- Continue to monitor yourself and your co-workers for signs and symptoms of COVID-19. These include:
 - o Sudden shortness of breath or trouble breathing;
 - o Muscle pain that goes beyond what you would normally feel after fighting a fire;
 - o New and sudden loss of taste or smell;
 - o Unusual fatigue;
 - o Fever or chills;
 - o Headache that is different than what is normal after firefighting; or
 - o Nausea, vomiting or diarrhea

If you experience any of these symptoms, please proceed to your home destination avoiding any further stops. After arriving home, immediately contact your doctor, an urgent care clinic, or your local health department to receive further instructions for care and testing. You should avoid contact with others until you receive further instruction.

Continue to practice frequent hand hygiene, washing frequently with soap and warm water for at least 20 seconds and using hand sanitizer frequently. Avoid touching your face, eyes, and mouth with your hands. Remember to thoroughly wipe down your vehicle with appropriate disinfectant upon arriving at your destination. Upon arriving at your destination, please contact your individual agency to determine if they have separate infection and exposure control procedures when returning from an assignment and follow their guidance. We wish you a safe and healthy trip home or to your next destination.



Human Resource Message



Walker Creek and Chickadee Creek Fires, August 29, 2021

Zero Tolerance for illegal non-prescription drugs or alcohol:

As a reminder to everyone working on this incident, we have zero tolerance for the illegal use of non-prescription drugs or alcohol. The use, sale, purchase, transfer, or possession of any illegal substances that cause impairment, or any legal, non-medically authorized substances that cause impairment, is strictly prohibited in the workplace.

The safety of our workforce is the number one priority of this team and of our agency administrators. Please do not put yourself or others at risk, always be fit for duty, take care of yourselves and look out for each other.

Be careful out there today and make sure you continue to hydrate, appropriately.



Quote for the day:

“Whether you think you can or you think you can’t, you’re right.”

– Henry Ford



Please wear a mask, social distance, wash & sanitize your hands.

Susie Manezes, Human Resource Specialist -NW Team 12
Contact Number: 602-571-9327. smanezes@blm.gov

Logistics Message

Omak Base Camp

Kitchen Hours

0600 to 0900 Breakfast

1800 to 2100 Dinner

Supply/Cache Hours

0530-2130

Shower Hours

0430-1300 Open

1400-2300 Open

Ground Support

0500-2200

Walker Creek Fire
Finance

Chickadee Creek
Fire Finance



Finance Message

2021.walker creek.finance@firenet.gov

2021.chickadee creek.finance@firenet.gov

(509) 433-1115 TIME Unit Carol

(509) 531-7418 Equipment Mark

(509) 675-5821 ICPI Rob

(509) 423-6011 FSC2 (T) Christina

Finance is all virtual. We will be happy to take all your paperwork, CTRs and Shift tickets all by email or text.

Please be patient with us as we process your time for demob. Our finance section is working as quick as we can to process your time. Most of the CTRs and Shift Tickets that the outgoing team was taking never made it to the email, so we might have to ask for your paperwork again. We will do our best to support you anyway we can.

If you have questions, please call one of the above numbers.

Make sure that your CTR and ST have the correct fire that you are working on.

Incident Maps

How to Download Maps in Avenza

If you're cell signal is poor you may need to connect to a wifi to download maps. However sometimes being connected to a wifi can slow map downloads. You'll just have to find out what works best.

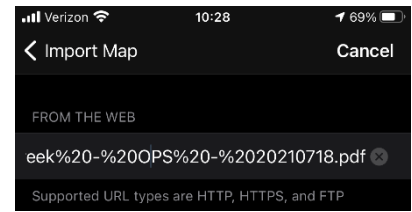
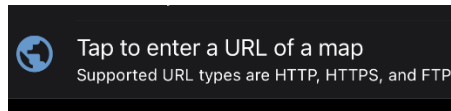
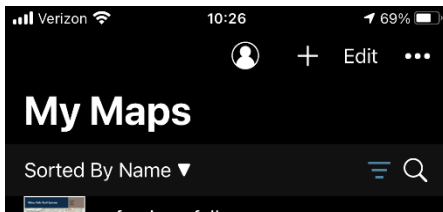
Method 1: From a browser - If you have a good cell or wifi signal

1. Tap on the desired map link and wait for the preview. *If it fails to load, use method 2 instead*
2. Tap the 'send to' icon (square with up arrow)
3. Choose the Avenza app



Method 2: From Avenza direct – if you don't have a good cell or wifi signal

1. Tap and hold on the desired map link, then choose 'copy' to copy the direct URL to the map
2. Launch the Avenza app
3. When not in any map... Tap the + (plus) icon at the top of the screen
4. Choose the load from URL option (last choice)
5. Paste the direct URL to the map
6. Tap 'Done' ; the map will begin downloading



How to Send Map Updates to the Situation Unit

1. From within the map in Avenza, click the pin with three lines near the lower-right corner.
2. *iPhone:* In the lower right, click the square with up arrow. From the pop-up menu, choose Export to Others.
Android: In the lower right, click the circle with three lines. Click the pop-up circle with up arrow.
3. Set these options:
 - a. Filename – leave alone
 - b. Export Format – choose SHP, GPX or KML
 - c. Data – all features
 - d. Image size – no image
4. Click the Export button in the upper-right corner.
5. When the export is ready, choose your Mail application.
6. Email the update to 2021.walkercreek.situation@firenet.gov for the Walker Creek Fire map updates or 2021.chickadeecreek.situation@firenet.gov for the Chickadee Fire map updates.
7. If you have questions, call or text the Situation Unit at 360-584-3373.
8. Your email needs to include an explanation of the data and a contact phone number.

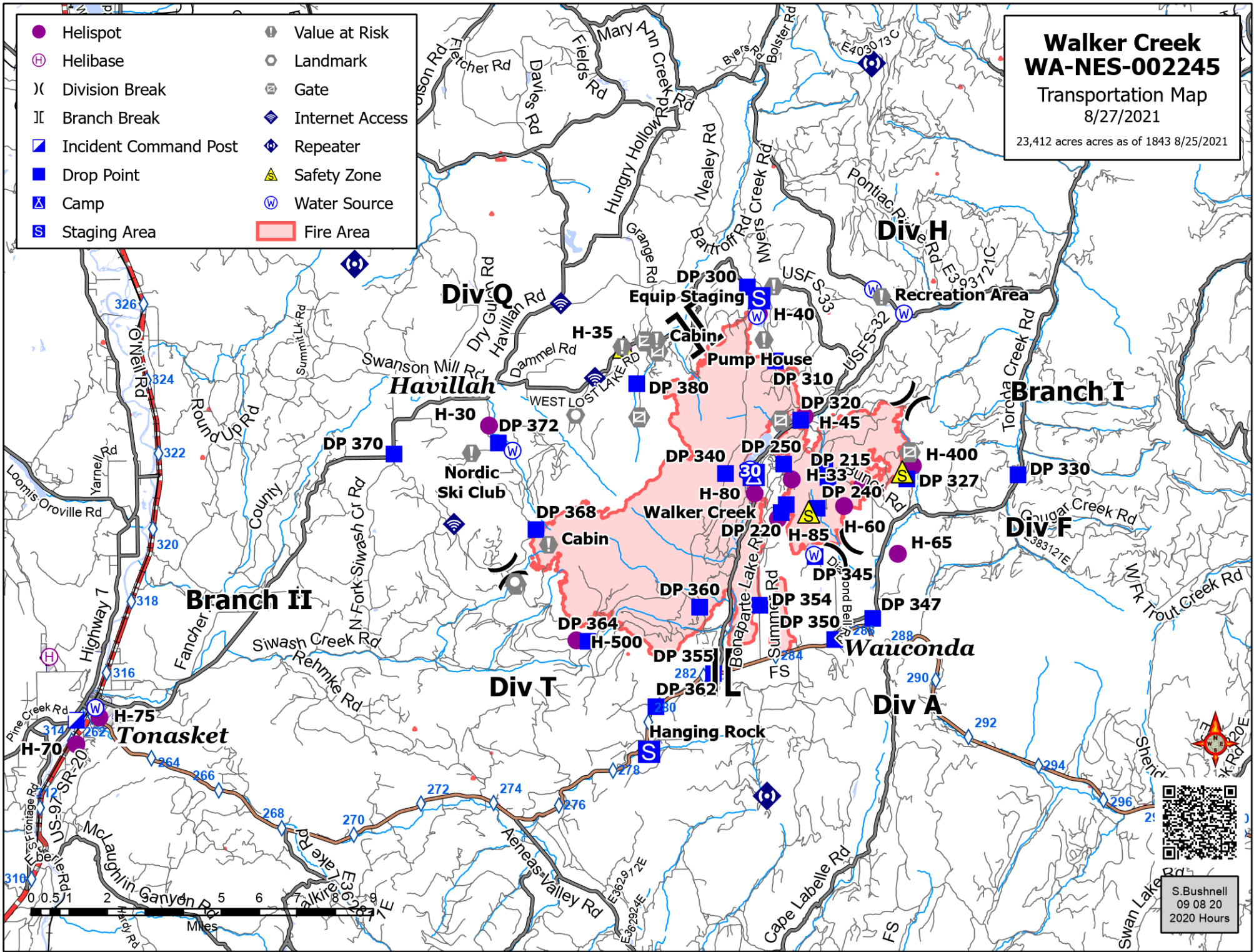
If all else fails draw your map update on your paper map, take a picture and it attach that to an email to the above addresses.

Walker Creek WA-NES-002245

Transportation Map
8/27/2021

23,412 acres as of 1843 8/25/2021

- | | |
|-------------------------|-------------------|
| ● Helispot | ⚠ Value at Risk |
| ⊕ Helibase | ⊙ Landmark |
| ⌋ Division Break | ⊞ Gate |
| ⌋ Branch Break | 📶 Internet Access |
| 🚒 Incident Command Post | 📶 Repeater |
| 📍 Drop Point | ⚠ Safety Zone |
| 🏕 Camp | 💧 Water Source |
| 📦 Staging Area | 🔴 Fire Area |



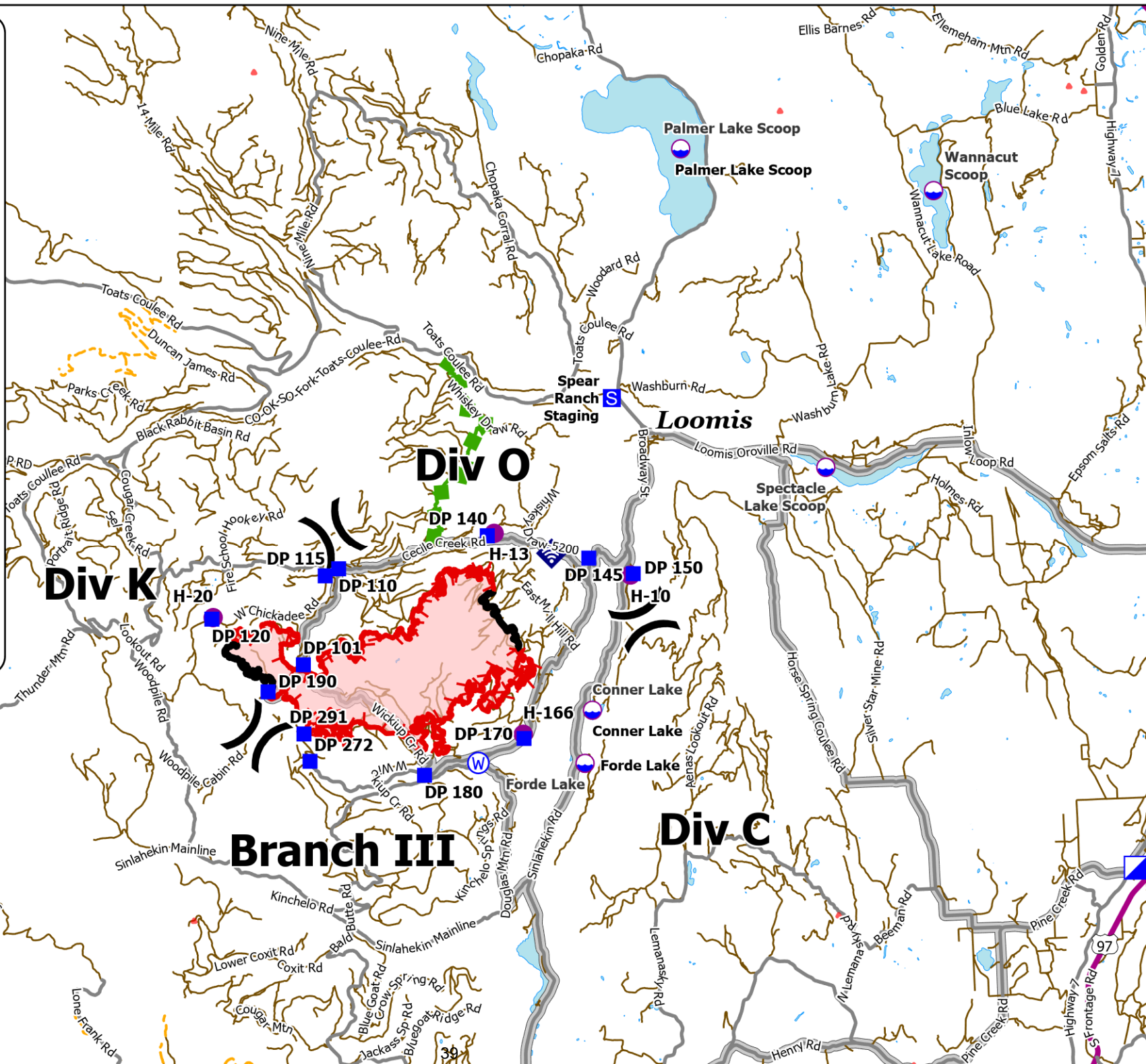
S. Bushnell
09 08 20
2020 Hours

Transportation
Chickadee Creek
 WA-NES-002310
 8/27/2021

5,199 acres as of 1945 8/24/2021 via IR



- Dip Site
- Helispot
- Division Break
- Drop Point
- Staging Area
- Internet Access
- Water Source
- Incident Command Post
- Wildfire Daily Fire Perimeter
- Primary Highway
- Secondary Highway
- Light-Duty Road
- Unimproved Road
- Road Closed
- Access Routes
- Escape Route
- Fire Edge
- Contained Line



WALKER CREEK/CHICKADEE FIRE COVID-19 MITIGATIONS

Supervisors are required to go over this list each morning with assigned resources- report any symptoms to medical unit.

In the last 24 hours have you experienced:

- Cough more than expected?
- Shortness of breath or difficulty breathing?
- Fever? Chills?
- Muscle pain, outside your normal for firefighting?
- Sore throat?
- New loss of taste or smell?
- Fatigue, outside your normal for firefighting?
- Headache, outside your normal for firefighting?
- Congestion or runny nose, outside your normal for firefighting?
- Nausea or vomiting
- Diarrhea

** Take temperature with no-touch thermometer, if available **

- **All personnel are required to wear a mask at all times, whether indoors or outdoors, unless working alone or actively engaged in firefighting on the fireline.**
- **Use radio or Zoom link provided to join briefings remotely.**
- **Observe 6ft Distancing at all times.**
- **Send crew representatives to pick up meals - masks must be worn in food lines.**
- **Wash hands frequently and disinfect high-traffic areas on a regular basis.**
- **Limit close contact between firefighters and the public to prevent exposure and spread. WEAR A MASK AT ALL TIMES WHILE IN PUBLIC PLACES.**

EMERGENCY PLAN INCIDENT WITHIN AN INCIDENT

ON SCENE INCIDENT COMMANDER

In the event of an accident or medical incident of any size, your primary responsibility is to ENSURE that the victim(s) receive prompt and effective Triage, Treatment, Extrication and Transport.

- **ENSURE THE MEDICAL INCIDENT REPORT IN THE INCIDENT ACTION PLAN IS BEING USED AND FOLLOWED- *IF DETERMINED TO BE A GREEN, DO NOT DECLARE EMERGENCY TRAFFIC AND ONLY COMPLETE LINE 1-4 ON MIR*.**
- Conduct size-up of the incident nature of accident, number type of resources involved, latitude and longitude location (DD°MMM.MM format): notify incident communications center and supervisor, request assistance as needed.
- Order and coordinate medical and support response to the accident.
- Evaluate special needs (law enforcement, haz mat, etc.).
- Clear the command frequency if medical emergency, coordinate with incident communications and air attack for air medical transportation needs.
- Preserve and photograph the scene for accident investigation.
- Remain aware of surroundings and the status of the main incident (delegate personnel to monitor the main fire) to ensure safety of medical treatment personnel.
- Until relieved, supervise and manage all personnel involved at the incident scene.

MEDICAL PLAN (ICS 206 WF)

| | | | | | | | | | | | |
|---|--|---|----------------|--|-------------------|--|--------------|--------------------------|---|---------------------------------------|--|
| 20 Incident/Project Name | | | | 1. Operational Period | | | | | | | |
| Walker Creek Fire | | | | August 29-30, 2021 0600 -0600 | | | | | | | |
| 2. Ambulance Services | | | | | | | | | | | |
| Name | | Complete Address | | Phone | | Advanced Life Support (ALS) Yes No | | | | | |
| Lifeline Ambulance | | 912 Koala Ave Omak, WA 98841 | | 911 - Dispatch 509-663-8091 | | X | | | | | |
| 3. Air Ambulance Services | | | | | | | | | | | |
| Name | | Phone | | Type of Aircraft & Capability | | | | | | | |
| Life Flight Network | | 800-232-0911 | | Bell 407 - Brewster | | | | | | | |
| Airlift Northwest | | 800-426-2430 or 911 | | Rotor in Wenatchee | | | | | | | |
| 4. Hospitals | | | | | | | | | | | |
| Name Complete Address | | Coordinate Standard Degrees Decimal Minutes DD° MM.MMM' N - Lat DD° MM.MMM' W - Long | | Travel Time From Bonaparte Air Gnd | | Phone | | Helipad Yes No | | Level of Care Facility | |
| North Valley Hospital 203 S Western Ave Tonasket, WA 98855 | | Lat: | 48°42.4549' N | | 13 min | 38 min | 509-486-2151 | | X | Level 4 Trauma | |
| | | Long: | 119°26.3267' W | | | | | | | | |
| Mid-Valley Hospital 912 Koala Ave Omak, WA 98841 | | Lat: | 48°23.8336' N | | 24 Min | 59 min | 509-826-1760 | X | | Level 4 Trauma | |
| | | Long: | 119°32.8758' W | | | | | | | | |
| Confluence Health Hospital (Central Washington Hospital) 1201 S Miller St. Wenatchee, WA 98801 | | Lat: | 47°24.4340' N | | 1 Hr 12 min | 2 Hr 48 min | 509-662-1511 | X | | Level 2 Trauma | |
| | | Long: | 120°19.3664' W | | | | | | | | |
| Harborview Medical 325 9 th Ave Seattle, WA 98104 | | Lat: | 47°36.1897' N | | 2 Hr 22 min | 5 Hr | 541-222-6929 | X | | Level 1 Trauma Burn Center | |
| | | Long: | 122°19.4759' W | | | | | | | | |
| 5. Division Branch Group | | Capability | | | | Personnel | | | | | |
| Div A/F | | Johnsen EMTF | | | | Stevens Sheriff Ambulance (Ambo 1) Brittan Byrd EMPF | | | | | |
| Div H | | Sewell EMPF | | | | | | | | | |
| Div Q | | Bridges EMPF | | | | | | | | | |
| Div T | | Marin EMPF | | | | | | | | | |
| Night Shift | | Use Available Resources | | | | | | | | | |
| 6. Prepared By (Medical Unit Leader) | | | | 7. Date/Time | | 8. Reviewed By (Safety Officer) | | | | 9. Date/Time | |
| Lee Venning (T), Diana Braun <i>Lee Venning</i> | | | | 08/28/2021 1800 | | Troy Corn <i>Troy Corn</i> | | | | 08/28/2021 1800 | |

MEDICAL PLAN (ICS 206 WF)

| | | | | | | | | | | | |
|---|--|---|----------------|---|------------------|--|--------------|--------------------------|---|---|--|
| 20 Incident/Project Name | | | | 1. Operational Period | | | | | | | |
| Chickadee Creek Fire | | | | August 29-30, 2021 0600 -0600 | | | | | | | |
| 2. Ambulance Services | | | | | | | | | | | |
| Name | | Complete Address | | Phone | | Advanced Life Support (ALS) Yes No | | | | | |
| Lifeline Ambulance | | 912 Koala Ave Omak, WA 98841 | | 911 - Dispatch 509-663-8091 | | X | | | | | |
| 3. Air Ambulance Services | | | | | | | | | | | |
| Name | | Phone | | Type of Aircraft & Capability | | | | | | | |
| Life Flight Network | | 800-232-0911 | | Bell 407 - Brewster | | | | | | | |
| Airlift Northwest | | 800-426-2430 or 911 | | Rotor in Wenatchee | | | | | | | |
| 4. Hospitals | | | | | | | | | | | |
| Name Complete Address | | Coordinate Standard Degrees Decimal Minutes DD° MM.MMM' N - Lat DD° MM.MMM' W - Long | | Travel Time From Loomis Air Gnd | | Phone | | Helipad Yes No | | Level of Care Facility | |
| North Valley Hospital 203 S Western Ave Tonasket, WA 98855 | | Lat: | 48°42.4549' N | | 8 min | 22 min | 509-486-2151 | | X | Level 4 Trauma | |
| | | Long: | 119°26.3267' W | | | | | | | | |
| Mid-Valley Hospital 912 Koala Ave Omak, WA 98841 | | Lat: | 48°23.8336' N | | 20 Min | 46 min | 509-826-1760 | X | | Level 4 Trauma | |
| | | Long: | 119°32.8758' W | | | | | | | | |
| Confluence Health Hospital (Central Washington Hospital) 1201 S Miller St. Wenatchee, WA 98801 | | Lat: | 47°24.4340' N | | 68 min | 2 Hr 35 min | 509-662-1511 | X | | Level 2 Trauma | |
| | | Long: | 120°19.3664' W | | | | | | | | |
| Harborview Medical 325 9 th Ave Seattle, WA 98104 | | Lat: | 47°36.1897' N | | 1Hr 38 min | 4 Hr 50 min | 541-222-6929 | X | | Level 1 Trauma Burn Center | |
| | | Long: | 122°19.4759' W | | | | | | | | |
| 5. Division Branch Group | | Capability | | | | Personnel | | | | | |
| Div C | | Landrum EMTF | | | | Pen Orville Ambulance (Ambo 2) Hastings | | | | Smith EMPF (UTV) | |
| Div K/O | | Satcher EMTF | | | | Cooper EMPF | | | | | |
| Night Shift | | Counts EMPF | | | | | | | | | |
| 6. Prepared By (Medical Unit Leader) | | | | 7. Date/Time | | 8. Reviewed By (Safety Officer) | | | | 9. Date/Time | |
| Lee Venning (T), Diana Braun <i>Lee Venning</i> | | | | 08/28/2021 1800 | | Troy Corn <i>Troy Corn</i> | | | | 08/28/2021 1800 | |

Medical Incident Report

FOR A NON-EMERGENCY INCIDENT, WORK THROUGH CHAIN OF COMMAND TO REPORT AND TRANSPORT INJURED PERSONNEL AS NECESSARY.

FOR A MEDICAL EMERGENCY: IDENTIFY ON SCENE INCIDENT COMMANDER BY NAME AND POSITION AND ANNOUNCE "MEDICAL EMERGENCY" TO INITIATE RESPONSE FROM IMT COMMUNICATIONS/DISPATCH.

Use the following items to communicate situation to communications/dispatch.

1. CONTACT COMMUNICATIONS / DISPATCH (**Verify correct frequency prior to starting report**)
Ex: "Communications, Div. Alpha. Stand-by for Emergency Traffic."
2. INCIDENT STATUS: *Provide incident summary (including number of patients) and command structure.*
Ex: "Communications, I have a Red priority patient, unconscious, struck by a falling tree. Requesting air ambulance to Forest Road 1 at (Lat./Long.) This will be the Trout Meadow Medical, IC is TFLD Jones. EMT Smith is providing medical care."

| | | |
|---|---|---|
| Severity of Emergency / Transport Priority | <input type="checkbox"/> RED / PRIORITY 1 Life or limb threatening injury or illness. Evacuation need is IMMEDIATE <i>Ex: Unconscious, difficulty breathing, bleeding severely, 2° – 3° burns more than 4 palm sizes, heat stroke, disoriented.</i> <input type="checkbox"/> YELLOW / PRIORITY 2 Serious Injury or illness. Evacuation may be DELAYED if necessary. <i>Ex: Significant trauma, unable to walk, 2° – 3° burns not more than 1-3 palm sizes.</i> <input type="checkbox"/> GREEN / PRIORITY 3 Minor Injury or illness. Non-Emergency transport <i>Ex: Sprains, strains, minor heat-related illness.</i> | |
| Nature of Injury or Illness & Mechanism of Injury | | <i>Brief Summary of Injury or Illness (Ex: Unconscious, Struck by Falling Tree)</i> |
| Transport Request | | <i>Air Ambulance / Short Haul/Hoist Ground Ambulance / Other</i> |
| Patient Location | | <i>Descriptive Location & Lat. / Long. (WGS84)</i> |
| Incident Name | | <i>Geographic Name + "Medical" (Ex: Trout Meadow Medical)</i> |
| On-Scene Incident Commander | | <i>Name of on-scene IC of Incident within an Incident (Ex: TFLD Jones)</i> |
| Patient Care | | <i>Name of Care Provider (Ex: EMT Smith)</i> |

3. INITIAL PATIENT ASSESSMENT: *Complete this section for each patient as applicable (start with the most severe patient)*

Patient Assessment: See IRPG page 106

Treatment:

4. TRANSPORT PLAN:

Evacuation Location (if different): *(Descriptive Location (drop point, intersection, etc.) or Lat. / Long.)* Patient's ETA to Evacuation Location:

Helispot / Extraction Site Size and Hazards:

5. ADDITIONAL RESOURCES / EQUIPMENT NEEDS:

Example: Paramedic/EMT, Crews, Immobilization Devices, AED, Oxygen, Trauma Bag, IV/Fluid(s), Splints, Rope rescue, Wheeled litter, HAZMAT, Extrication

6. COMMUNICATIONS: Identify State Air/Ground EMS Frequencies and Hospital Contacts as applicable

| Function | Channel Name/Number | Receive (RX) | Tone/NAC * | Transmit (TX) | Tone/NAC * |
|-------------|---------------------|--------------|------------|---------------|------------|
| COMMAND | | | | | |
| AIR-TO-GRND | | | | | |
| TACTICAL | | | | | |

7. CONTINGENCY: **Considerations:** *If primary options fail, what actions can be implemented in conjunction with primary evacuation method? Be thinking ahead.*

8. ADDITIONAL INFORMATION: *Updates/Changes, etc.*

REMEMBER: Confirm ETA's of resources ordered. Act according to your level of training. Be Alert. Keep Calm. Think Clearly. Act Decisively.