

INCIDENT ACTION PLAN

Walker Creek / Chickadee Creek



August 30-31, 2021
Dayshift 0600-1800
Nightshift 1800-0600

BRIEFING Phone
(audio only)

[+1 929-336-2435](tel:+19293362435), [452803978#](tel:+1452803978)

Phone Conference
ID: 452 803 978#

Walker Creek Fire
WA-NES-002245
PNN7RL (1522)
WA state code: 221KPI

Chickadee Creek Fire
WA-NES-002310
PNN7WA (1522)
221-JFZ

QR Code for:
Virtual Check-in
Time
Maps
IAP
COVID19 Self Test



INCIDENT OBJECTIVES (ICS 202)

1. Incident Name:	2. Operational Period: DAY/NIGHT	
WALKER CREEK & CHICKADEE CREEK	Date/Time From: 08/30/2021 0600 MON	Date/Time To: 08/31/2021 0600 TUE
3. Objective(s):		
<ul style="list-style-type: none"> • Ensure firefighter, aviator and public safety is the priority in all fire management activities by utilizing a risk-based approach to decision making. • Implement a full suppression strategy utilizing direct and indirect tactics having a high probability of success while aligning with values at risk and remaining fiscally responsible. • Develop and maintain relationships with BLM, WA DNR, USFS, Okanogan County, local agencies, cooperators, stakeholders, and the public while providing consistent and timely public information. • Utilize appropriate fire strategies to minimize fire impacts on private properties, recreation trails, infrastructure, and natural & cultural resources including timber, grazing land, spotted owl and Canadian Lynx habitat, white bark pine, and cultural, historic and heritage sites. • Follow CDC/PNWCG Best Management Practices to minimize public and responder exposure to transmission or infection from COVID-19. 		
4. Operational Period Command Emphasis:		
Secure and mop-up direct control lines. Improve indirect control lines, make preparations for firing operations and implement where needed.		
General Situational Awareness:		
Maintain situational awareness, identify hazards and develop mitigations for them.		
5. Site Safety Plan Required? Yes <input type="checkbox"/> No <input checked="" type="checkbox"/>		
Approved Site Safety Plan(s) Located		
6. Incident Action Plan (the items checked below are included in this Incident Action Plan):		
<input checked="" type="checkbox"/> ICS 202 <input checked="" type="checkbox"/> ICS 203 <input checked="" type="checkbox"/> ICS 204 <input checked="" type="checkbox"/> ICS 205 <input type="checkbox"/> ICS 205A <input checked="" type="checkbox"/> ICS 206	<input type="checkbox"/> ICS 207 <input type="checkbox"/> ICS 208 <input checked="" type="checkbox"/> ICS 220 <input checked="" type="checkbox"/> Map/Chart <input checked="" type="checkbox"/> Weather Forecast/Tides/Currents	Other Attachments: <input checked="" type="checkbox"/> HR MESSAGE <input checked="" type="checkbox"/> COVID SCREENING <input type="checkbox"/> _____ <input type="checkbox"/> _____
7. Prepared by: MARGE HUTCHINSON Position/Title: PSC2	Signature: <i>Marge Hutchinson</i>	
8. Approved by Incident Commander:	Name: JEFF DIMKE	Signature: <i>Jeff Dimke</i>
ICS 202	IAP Page	Date/Time: 08/29/2021 2000

ORGANIZATION ASSIGNMENT LIST (ICS 203)

1. Incident Name:		2. Operational Period: DAY/NIGHT	
WALKER CREEK & CHICKADEE CREEK		Date/Time From: 08/30/2021 0600 MON	Date/Time To: 08/31/2021 0600 TUE
3. Incident Commander(s) and Command Staff:		FOOD UNIT	RUSS HOVEY
IC/UC	JEFF DIMKE	SECURITY UNIT	
DEPUTY	BOBBY SHINDELAR (VIRTUAL)	7. Operations Section:	
SAFETY OFFICER	TROY CORN JACK CATES (VIRTUAL)	PLANNING OPS	AARON ROWE
INFORMATION OFFICER	MARY BEAN ROLAND EMETAZ	OPS SECTION CHIEF	TONY ENGEL JEROMY WILSON (T)
LIAISON OFFICER	SCOTT CRAWFORD	BRANCH DIRECTOR	CHRIS ZOLLER
HEALTH LIAISON	LIV STECKER	BRANCH DIRECTOR	JERRAN FLINDERS
HUMAN RESOURCE SPECIALIST	SUSIE MANEZES		
4. Agency/Organization Representative(s):		DIVISION/GROUP	A/F CODY ACORD
Agency/Organization	Name	DIVISION/GROUP	H MATT KENNEDY
DNR	KEN MCNAMEE (ADMIN) BRETT WALKER (AREP)	DIVISION/GROUP	Q MICHAEL GOOD JAMES DICKINSON (T)
USFS	RODNEY SMOLDEN (ADMIN) MATT MARSH (AREP)	DIVISION/GROUP	T MICHAEL JACKSON
BLM	CURTIS BRYANT (ADMIN) ERICA TAECKER (AREP)	DIVISION/GROUP	C BOB HINDS
OKANOGAN COUNTY OES	MAURICE GOODALL	DIVISION/GROUP	K/O CHET DIERINGER SAM STEINSHOUER (T)
		DIVISION/GROUP	NIGHT DANIEL GLEASON SUSAN GREENLEAF (T)
5. Planning Section:		7b. Air Operations Branch:	
CHIEF	MARGE HUTCHINSON	AIR OPS BRANCH DIRECTOR	MIKE DAVIS GREG RESER (T)
DEPUTY	HOWARD JOHNSON (VIRTUAL)	AIR ATTACK SUPERVISOR	
RESOURCES UNIT	JILL JOHNSON	AIR SUPPORT SUPERVISOR	TIM LYDA
SITUATION UNIT	DAVE WISCHER	8. Finance/Administration Section:	
DOCUMENTATION UNIT	DEIDRE SMITH (VIRTUAL))	CHIEF	CHERI FULLER CHRISTINA GOEBEL (T)
DEMOBILIZATION UNIT	MIKE HESTON (VIRTUAL) ED MORGAN	TIME UNIT	CAROL LONG
FIRE BEHAVIOR ANALYST	DON STRAND	PROCUREMENT UNIT	MARK BOHNET
GIS SPECIALIST	SHAWN BUSHNELL MIKE TONKEL (T)	COMPENSATION UNIT	CHERI FULLER
TECHNOLOGY SUPPORT SPECIALIST	GEORGE JENKINS TODD MALLERY	COST UNIT	KAY HIGH (VIRTUAL)
INCIDENT METEOROLOGIST	BOB TOBIN	ICPI	ROB HECHINGER
6. Logistics Section:			
CHIEF	DAN SOPTICH		
DEPUTY	KEVIN HAUGHTON		
FACILITIES UNIT	SCOTT BEAULAUER		
GROUND SUPPORT UNIT	DAVE HARSH		
SUPPLY UNIT	JOHN KAUPA		
COMMUNICATIONS UNIT	MISSY PARKER		
MEDICAL UNIT	EAMONN RYAN LEE VENNING (T)		
9. Prepared By:	Name: JILL JOHNSON	Position/Title: RESL	Signature:
ICS 203	IAP Page	Date/Time: 08/29/2021 2000	<i>Jill Johnson</i>

Fire Weather Forecast

FORECAST NO: 23
PREDICTION FOR: Monday
Shift Date: August 30, 2021

INCIDENT: Walker-Chickadee Fires
UNIT: DNR-USFS-BLM
SIGNED: *Bob Tabix*

TIME AND DATE
FORECAST ISSUED: 8/29/2021 at 2000

Incident Meteorologist (IMET)

Weather Discussion: A low pressure system will move into the region on Monday and linger over the region through Thursday. This will bring much cooler temperatures to the region and gusty winds at times. Morning will be especially chilly. The air mass over the region is dry and looks to remain so, although there is a low end chance for a few showers on Wednesday. High pressure will build back in the area on Friday but quickly flattens Saturday and Sunday.

WEATHER FORECAST: Chickadee

Monday:

SKY/WEATHER: Partly cloudy in the morning. Increasing clouds in the afternoon.
High Temperature...66-72 above 4000 ft...75-80 below 4000 ft. 24hr chg: Down 3-5 degrees
Min RH.....22-27% above 4000 ft...20-25% below 4000 ft. 24hr chg: Up 2-3 percent.
20-FOOT WINDS: Light and variable in the morning...becoming south-southwest 10-12 with gusts to 20 mph after 1300.
CWR (>=0.10")....0% **LAL....**1 **Haines Index...3 (Very Low)** **Mixing Height...7200 ft AGL**

Tonight:

SKY/WEATHER: Partly cloudy.
Low Temperature...50-55.
Max RH.....40-50%
20-FOOT WINDS: South-southwest 10-15 mph...becoming north 10-12 with gusts to 20 mph after 2000...north 12-15 mph with gust 25-30 mph after 0200. Decreasing after daylight.
CWR (>=0.10")....0% **LAL....**1

WEATHER FORECAST: Walker

Monday:

SKY/WEATHER: Partly cloudy.
High Temperature...65-70 above 4000 ft...75-80 below 4000 ft. 24hr chg: Down 3-5 degrees
Min RH.....20-26% above 4000 ft...18-24% below 4000 ft. 24hr chg: Up 2-5 percent.
20-FOOT WINDS: Southwest 8-12 mph with gusts to 20 mph.
CWR (>=0.10")....0% **LAL....**1 **Haines Index...3 (Very Low)** **Mixing Height...6900 ft AGL**

Tonight:

SKY/WEATHER: Partly cloudy.
Low Temperature...40-50.
Max RH.....45-55%
20-FOOT WINDS: Becoming northwest-north 10-12 with gusts to 20 mph after 2100.
CWR (>=0.10")....0% **LAL....**1

Extended Outlook

Tuesday... Mostly cloudy. High: 60-70. Min RH: 25-35% Winds: Northwest-north 10-12 with gusts to 15 mph.
Wednesday...Partly cloudy. A slight chance of showers. High: 60-70. Min RH: 25-35% Winds: North 8-10 mph with gusts to 15 mph.
Thursday... Mostly Sunny. High: 65-75. Min RH: 20-30% Winds: North 5-10 mph.

FIRE BEHAVIOR FORECAST

FORECAST NUMBER: 23	TYPE OF FIRE: Wildland
FIRE NAME: Walker Creek & Chickadee Creek	OPERATIONAL PERIOD: Aug 30-31 2021 0600-0600
DATE ISSUED: Aug 29, 2021	TIME ISSUED: 2000
UNIT: WA DNR, BLM, USFS	Don Strand FBAN

INPUTS

WEATHER SUMMARY: See attached fire weather forecast

OUTPUTS

FIRE BEHAVIOR

FUELS: The fires are burning mostly in mixed conifer timber consisting of Douglas-fir, western larch, Engelmann spruce, and lodgepole pine below 6,000'. Sub-alpine fir, white bark pine, and lodgepole pine occur above 6,000'. All timber types have ladder fuels with black moss/lichens that make for an easy transition to crown fire. Dead fine fuels, grass (where not heavily grazed), and slash will increase surface fire spread. Most live fuels, except for red alder, are available to carry fire and fuel moistures will continue to drop with seasonal drying. Live fuels are still drought stressed.

GENERAL: Increasing fire behavior potential today as a result warm, dry and wind. Fine dead fuels will be more available to carry fire. Expect increased smoldering and creeping in available fuels starting around midday. As the humidity drops and winds increase, potential for isolated areas of surface fire to transition to torching with spotting exists. In areas where there is wind/slope alignment along with available surface and ladder fuels, a short upslope run could occur. Continue to watch for hold over spots from previous fire activity. Pitchy/punky wood and fine fuels still will be receptive fuel beds. Any spotting will be short range.

SPECIFIC:

Chickadee: Expect continued active potential fire today with the warm, dry and breezy conditions. In areas where wind/slope alignment exist, expect more active fire activity with potential for short upslope torching runs. Burnout operations should be effective earlier in the day. Winds will be southerly in the Sinlahekin.

Fuel Moistures- Aeneas LO WIMS data from yesterday were- 10-hour 10%, 100-hour 14%, 1000-hour 14%. ERC 45.

Probability of Ignition will approach 70% unshaded and 50% shaded.

Walker: Expect moderate fire behavior potential with the warm, dry and breezy conditions. Fire will be smoldering and creeping early, with humidity decreasing near 20% in the afternoon expect increasing fire activity in available fuels. Burnout operations should be effective, although potential exists for isolated torching and spotting. Continue to keep an eye out for wind/slope alignment.

Fuel Moistures- Lost Lake RAWs WIMS data from yesterday were- 10-hour 10%, 100-hour 14%, 1000-hour 15%. ERC 40.

Probability of Ignition will approach 70% unshaded and 50% shaded.

Night: Expect breezy conditions with the wind transitioning from southerly to northerly around 2000 hours with gusts 20 to 30 mph after midnight. In areas where heat is near available fuel, expect active fire through much of the night. Pay attentions to areas there is wind/slope alignment. fuels will be available to carry fire into the night. Pay attention to the transition from southerly to northerly winds. Continue to watch for hold over spots from previous fire activity. Stump holes burning deep

AIR OPERATIONS: Expect some turbulence in areas of complex terrain

SAFETY

Fire weakened live and dead trees susceptible to windy conditions.

Remember Watchout Situation # 15: Winds increase and/or changes directions.

Fire behavior potential continues to be elevated with the dry fuels and breezy conditions.



SAFETY MESSAGE

30-31 August 2021

INCIDENT: Walker Creek/Chickadee

OPERATIONAL PERIOD: 0600-0600

BREEZY CONDITIONS

Breezy conditions and a recently opened canopy due to logging is a recipe fire weakened trees to become extremely unstable. This is no time to let your guard down and the exact time to sharpen your focus through LCES and Look Up, Look Down, Look All Around. If you see increased sway in weakened stands disengage immediately and communicate this to all resources in the area.

MISSION CREEP

Mission Creep is the expansion of a mission or task beyond original objectives or assignment. In our business this is most often undesirable unless serious life considerations are at risk. Many times, Mission Creep will continue once started until catastrophic failure or undesirable outcomes are encountered. Plans are built based on set and measurable objectives. Stay in your lane and avoid the urge to creep!

COVID MITIGATIONS

Please review your COVID/Viral Transmission prevention guidelines. Maintain your distancing to the greatest extent, cough or sneeze away from other people, mask up when indoors and respect the personal space of others. If you begin feeling ill, notify your supervisor and seek medical attention for screening.

Ensure LCES in in place before engaging and continue to evaluate during the entire shift.

SAFETY OFFICER: Troy Corn, Jack Cates

Deliberate Risk Assessment-Hazard Summary

30-31 August 2021

Hazard	Mitigation	Post Risk
Viral Transmission Mitigations, Communicable Disease	Maintain awareness of health, perform self checks, maintain social distancing, wear face coverings when indoors or when social distancing cannot be maintained. Report and isolate if feeling symptomatic. Coordinate with Okanogan County Public Health for testing, reporting and isolation as needed.	Low
Extraction Time	Identify medivac sites and helispots. Initiate ground transport to accident site. Identify EMT/EMTP from resources assigned to division. Provide line qualified paramedics to each division as available. Review IWI protocol to ensure familiarity. Utilize civilian medivac as treatment/timing dictates. Evaluate on-going need for repositioning medical personnel.	High
Heavy Equipment	Post lookouts around equipment work areas. Establish communications with equipment boss and operator. Do not work down slope from equipment. Familiarize crews with specialty equipment and processes.	High
Hazard Trees	Use avoidance to limit exposure time. Snag ahead to avoid exposure. Use qualified fallers, blasting, or alternate methods if needed. Conduct on-going risk analysis of all work areas. Follow Hazard Tree Safety Guidelines (IRPG page 22).	High
Aircraft	Utilize Air Attack. Ensure all resources are a safe distance from all bucket and retardant drops. Establish LCES. Utilize air to ground primary radio channel. Reference IRPG (Safe aircraft operations pg. 56-58). Ensure IA resources have coordination with unassigned local air resources to provide deconfliction.	High
Steep Terrain/Gravity	Do not work crews above or below each other. Post lookouts for rolling material. Watch footing in loose soil, rock and around vegetation. Do not work below heavy equipment. Scout and identify travel routes. Establish LCES.	Moderate
Physical Factors	Maintain hydration schedule. Closely monitor work rate and implement rest periods. Maintain nutrition. Ensure adequate work/rest.	Moderate
Environmental Factors	Assign medical personnel to camp. Assess for known allergies and report to medical personnel. Obtain Bee Bopper/wasp spray and yellow jacket traps. Maintain an awareness of livestock. Keep an eye out for wildlife including bears, cougars, and rattlesnakes.	Moderate
Fire Behavior	Be aware of burn windows and weather impacts and min/max RH for flashy fuels/local conditions. Be aware of increased fire behavior and concerns specific to thunderstorm safety (IRPG p. 21). Report changes to FBAN and IMET. Include thunderstorm safety message in IAP.	Moderate
Unburned Fuels/Firing Ops	Establish LCES. Ensure management action points are implemented and followed. Weather updates as needed during burning operations. Locate indirect firelines to minimize the amount of unburned fuels. Follow Interagency Ignition Guide. Ensure communications between all firing operations. Establish road security at all firing sites. Follow approved firing plan for unburned fuels.	Moderate
Transportation	Signing of all incident roads that provide access to divisions. Daily updated travel plan maps. Practice defensive driving. In local communities obey the posted speed limits. Use reader boards to control entry as needed. Identify and evaluate contingency and alternate escape and travel routes.	Moderate
Communication	Evaluate for dead zones prior to engagement. Utilize human repeaters as needed. Ensure accountability of resources in problem areas.	Low
Public Interaction	Place new road closures as necessary and maintain current closures. Maintain awareness of evacuation areas and provide accurate information dissemination.	Low

Division/Group Assignment List (ICS 204 WF)
Controlled Unclassified Information//Basic

1. Incident Name:				3.		
WALKER CREEK & CHICKADEE CREEK				Branch: I	Division/Group A/F	
2. Operational Period: DAY/NIGHT						
Date/Time From: 08/30/2021 0600 MON		Date/Time To: 08/31/2021 0600 TUE				
4. Operations Personnel						
OPERATIONS CHIEF		TONY ENGEL; AARON ROWE JEROMY WILSON (T)		BRANCH DIRECTOR		ZOLLER, CHRIS
SAFETY OFFICER		TROY CORN; JACK CATES		DIVISION/GROUP SUPERVISOR		CODY ACORD
5. Resources Assigned this Period						
Strike Team / Task Force / Resource Designator	LWD	Leader	Number Persons	Drop Off PT./Time	Pick Up PT./Time	
O-435 SOF2	09/11	JOSH NORTHRUP	1	DP-354/0600	DP-354/1800	
O-450 SOF2 (T)	09/02	PHIL GRAHAM	1	DP-354/0600	DP-354/1800	
O-260 TFLD	09/01	DAVID HADLEY	1	DP-354/0600	DP-354/1800	
O-350 TFLD (T)	09/06	CORY FISCHER	1	DP-354/0600	DP-354/1800	
O-475 TFLD	09/11	TODD OLSON	1	DP-354/0600	DP-354/1800	
O-477.1 TFLD (LOAN)	09/10	ROBERT COTA	1	DP-354/0600	DP-354/1800	
O-422 SMOD REPUBLIC C-201		BRAD FREDRICKSON	10	DP-354/0600	DP-354/1800	
O-477 SMOD BOXELDER JOB CORPS (LOAN)		KEVIN ARGUETA	10	DP-354/0600	DP-354/1800	
C-82 HC2 NORTH REFORESTATION CO	09/08	JOSE RINCON	20	DP-354/0600	DP-354/1800	
E-87 ENG6 OK-OKS EC 95	09/01	CLAYTON HEARST	3	DP-354/0600	DP-354/1800	
E-95 ENG6 TENNESSEE E3762	08/31	DILLON MASH	4	DP-354/0600	DP-354/1800	
E-123 ENG4 HI COUNTRY	09/09	JEREMY PATRICK	3	DP-354/0600	DP-354/1800	
E-215 ENG4 GOODING E91826	08/30	MITCH KISSEL	3	DP-354/0600	DP-354/1800	
E-217 ENG6 ACCESS FIRE	09/04	KEN VIRDEN	3	DP-354/0600	DP-354/1800	
E-218 ENG4 IDAHO HEATSEEKER 19	09/04	CASEY JOHNSON	3	DP-354/0600	DP-354/1800	
8. Division/Group Communication Summary						
Function	Channel	RX Frequency N/W	RX Tone/NAC	TX Frequency N/W	TX Tone/NAC	Mode
COMMAND	1	170.0625	114.8	162.1750	114.8	A
COMMAND	2	170.3125	114.8	167.8375	114.8	A
COMMAND	3	170.4500	114.8	168.1000	114.8	A
COMMAND	4	172.5375	114.8	163.5500	114.8	A
TACTICAL	6	168.0500	114.8	168.0500	114.8	A
AIR TO GROUND	15	168.1375		168.1375		A
9. Prepared By (Resource Unit Leader)		Approved By (Planning Section Chief)		Date	Time	
JILL JOHNSON		MARGE HUTCHINSON		08/29/2021	2000	

Division/Group Assignment List (ICS 204 WF)
Controlled Unclassified Information//Basic

1. Incident Name:				3.		
WALKER CREEK & CHICKADEE CREEK				Branch: I	Division/Group A/F	
2. Operational Period: DAY/NIGHT						
Date/Time From: 08/30/2021 0600 MON		Date/Time To: 08/31/2021 0600 TUE				
4. Operations Personnel						
OPERATIONS CHIEF		TONY ENGEL; AARON ROWE JEROMY WILSON (T)		BRANCH DIRECTOR		ZOLLER, CHRIS
SAFETY OFFICER		TROY CORN; JACK CATES		DIVISION/GROUP SUPERVISOR		CODY ACORD
5. Resources Assigned this Period						
Strike Team / Task Force / Resource Designator		LWD	Leader	Number Persons	Drop Off PT./Time	Pick Up PT./Time
E-235 ENG5 SPOKANE B51		09/02	JOSH SAMPSON	3	DP-354/0600	DP-354/1800
E-236 ENG3 WA-SPFN 3		09/03	DENNIS STARRING	3	DP-354/0600	DP-354/1800
E-256 ENG5 WILD FIRE SERVICES		09/07	JAMIE RODOM	1	DP-354/0600	DP-354/1800
E-284 ENG6 REPUBLIC E622 (IA)		09/09	GABE GIDDINGS	4	DP-354/0600	DP-354/1800
E-135 WTS2 FOX CREEK ENTERPRISES		08/30	MAUREEN WEST	1	DP-354/0600	DP-354/1800
E-174 WTS2 STOTTS CONSTRUCTION		09/11	DAVID HARCOURT	1	DP-354/0600	DP-354/1800
E-175 WTS3 STOTTS CONSTRUCTION		09/03	JOSEPH HUDSON	1	DP-354/0600	DP-354/1800
E-1S DOZ3 JONES LOGGING			JASON JONES	2	DP-354/0600	DP-354/1800
E-196 PCT3 TUNK PUMPER CAT		09/07	JIM REHM	2	DP-354/0600	DP-354/1800
E-24 AMBU STEVENS SHERIFF AMBU 1 (ALS)		09/01	BRITTIAN	2	DP-354/0600	DP-354/1800
O-159 EMTF		09/11	HANS JOHNSEN	1	DP-354/0600	DP-354/1800
O-393 EMPF		09/06	ROSS BYRD	1	DP-354/0600	DP-354/1800
8. Division/Group Communication Summary						
Function	Channel	RX Frequency N/W	RX Tone/NAC	TX Frequency N/W	TX Tone/NAC	Mode
COMMAND	1	170.0625	114.8	162.1750	114.8	A
COMMAND	2	170.3125	114.8	167.8375	114.8	A
COMMAND	3	170.4500	114.8	168.1000	114.8	A
COMMAND	4	172.5375	114.8	163.5500	114.8	A
TACTICAL	6	168.0500	114.8	168.0500	114.8	A
AIR TO GROUND	15	168.1375		168.1375		A
9. Prepared By (Resource Unit Leader)			Approved By (Planning Section Chief)		Date	Time
JILL JOHNSON			MARGE HUTCHINSON		08/29/2021	2000

Division/Group Assignment List (ICS 204 WF)
Controlled Unclassified Information//Basic

1. Incident Name:				3.		
WALKER CREEK & CHICKADEE CREEK				Branch: I	Division/Group A/F	
2. Operational Period: DAY/NIGHT						
Date/Time From: 08/30/2021 0600 MON		Date/Time To: 08/31/2021 0600 TUE				
4. Operations Personnel						
OPERATIONS CHIEF		TONY ENGEL; AARON ROWE JEROMY WILSON (T)		BRANCH DIRECTOR		ZOLLER, CHRIS
SAFETY OFFICER		TROY CORN; JACK CATES		DIVISION/GROUP SUPERVISOR		CODY ACORD
5. Resources Assigned this Period						
Strike Team / Task Force / Resource Designator	LWD	Leader	Number Persons	Drop Off PT./Time	Pick Up PT./Time	
6. Control Operations/Work Assignments:						
<p>Task Patrol and mop up from the T/A break to the H/Q break. Mop areas that threaten structures or other values at risk; consider forecast weather, seasonality and the probability of fire actually impacting values.</p> <p>Purpose Contain fire progression within the current fire perimeter; limit threat to structures in the Bonaparte Lake area.</p> <p>End State Fire is controlled within the current fire perimeter and structures at Bonaparte Lake are no longer threatened.</p>						
7. Special Instructions:						
<p>Division breakout will be at the DP-354.</p> <p>Notify READ if cultural materials are found during mop up. Leave in place, flag and GPS. READs (D. Pearson, M. Wilson & A. Miller) will notify DIVS when entering or leaving the division.</p>						
8. Division/Group Communication Summary						
Function	Channel	RX Frequency N/W	RX Tone/NAC	TX Frequency N/W	TX Tone/NAC	Mode
COMMAND	1	170.0625	114.8	162.1750	114.8	A
COMMAND	2	170.3125	114.8	167.8375	114.8	A
COMMAND	3	170.4500	114.8	168.1000	114.8	A
COMMAND	4	172.5375	114.8	163.5500	114.8	A
TACTICAL	6	168.0500	114.8	168.0500	114.8	A
AIR TO GROUND	15	168.1375		168.1375		A
9. Prepared By (Resource Unit Leader)			Approved By (Planning Section Chief)		Date	Time
JILL JOHNSON			MARGE HUTCHINSON		08/29/2021	2000

Division/Group Assignment List (ICS 204 WF)
Controlled Unclassified Information//Basic

1. Incident Name:				3.		
WALKER CREEK & CHICKADEE CREEK				Branch: I	Division/Group H	
2. Operational Period: DAY/NIGHT						
Date/Time From: 08/30/2021 0600 MON		Date/Time To: 08/31/2021 0600 TUE				
4. Operations Personnel						
OPERATIONS CHIEF		TONY ENGEL; AARON ROWE JEROMY WILSON (T)		BRANCH DIRECTOR		ZOLLER, CHRIS
SAFETY OFFICER		TROY CORN; JACK CATES		DIVISION/GROUP SUPERVISOR		MATT KENNEDY
5. Resources Assigned this Period						
Strike Team / Task Force / Resource Designator	LWD	Leader	Number Persons	Drop Off PT./Time	Pick Up PT./Time	
O-435 SOF2	09/11	JOSH NORTHRUP	1	DP-354/0600	DP-354/1800	
O-450 SOF2 (T)	09/02	PHIL GRAHAM	1	DP-354/0600	DP-354/1800	
E-129.1 TFLD (T)	08/30	DARCY BODY	1	DP-354/0600	DP-354/1800	
O-342 TFLD	09/05	JEFF MEADOWS	1	DP-354/0600	DP-354/1800	
O-351 HEQB (T)	09/05	JADE DRAUSE	1	DP-354/0600	DP-354/1800	
O-399 FOBS	09/08	BRIAN BOLSER	1	DP-354/0600	DP-354/1800	
C-65 HC2 PR REFORESTATION INC	09/04	JARIO SILVA	20	DP-354/0600	DP-354/1800	
C-68 HC2 SZ FORESTRY	08/31	RICHARD FULLERTON	20	DP-354/0600	DP-354/1800	
E-6S ENG6 WORK HORSE	09/07	TY STRATIT	2	DP-354/0600	DP-354/1800	
E-129 ENG6 TONASKET RD E691	08/30	TAYLOR ORTEG	3	DP-354/0600	DP-354/1800	
E-216 ENG3 TFD-2301	09/04	MICHAEL JOHNSON	3	DP-354/0600	DP-354/1800	
E-5003 ENG6 TONASKET RD E612 (LOAN)	08/30	KYLE KERSTIENS	3	DP-354/0600	DP-354/1800	
E-5011 ENG6 COLORADO E681	09/09	CHAD BAKKEN	5	DP-354/0600	DP-354/1800	
E-254 WTT2 STEVENS COUNTY T9	09/05	ZACHARY WOLF	2	DP-354/0600	DP-354/1800	
EERA WT SILVER NICKEL			1	DP-354/0600	DP-354/1800	
8. Division/Group Communication Summary						
Function	Channel	RX Frequency N/W	RX Tone/NAC	TX Frequency N/W	TX Tone/NAC	Mode
COMMAND	1	170.0625	114.8	162.1750	114.8	A
COMMAND	2	170.3125	114.8	167.8375	114.8	A
COMMAND	3	170.4500	114.8	168.1000	114.8	A
COMMAND	4	172.5375	114.8	163.5500	114.8	A
TACTICAL	8	168.6000	114.8	168.6000	114.8	A
AIR TO GROUND	15	168.1375		168.1375		A
9. Prepared By (Resource Unit Leader)		Approved By (Planning Section Chief)		Date	Time	
JILL JOHNSON		MARGE HUTCHINSON		08/29/2021	2000	

Division/Group Assignment List (ICS 204 WF)
Controlled Unclassified Information//Basic

1. Incident Name:				3.		
WALKER CREEK & CHICKADEE CREEK				Branch: I	Division/Group H	
2. Operational Period: DAY/NIGHT						
Date/Time From: 08/30/2021 0600 MON		Date/Time To: 08/31/2021 0600 TUE				
4. Operations Personnel						
OPERATIONS CHIEF		TONY ENGEL; AARON ROWE JEROMY WILSON (T)		BRANCH DIRECTOR		ZOLLER, CHRIS
SAFETY OFFICER		TROY CORN; JACK CATES		DIVISION/GROUP SUPERVISOR		MATT KENNEDY
5. Resources Assigned this Period						
Strike Team / Task Force / Resource Designator		LWD	Leader	Number Persons	Drop Off PT./Time	Pick Up PT./Time
E-223 DOZ2 SILVER-NICKEL LOGGING		09/01	DOC COMBS	2	DP-354/0600	DP-354/1800
E-32S DOZ4 BOB MCDANIEL LOGGING		09/07	KEN MICHAELS	1	DP-354/0600	DP-354/1800
E-131 EXCA (MINI) TONASKET RD		09/04	DENISON/ WILLIAMS	2	DP-354/0600	DP-354/1800
E-272 LOG LOADER N COLUMBIA ENTERPR		09/07	SCOTT BUTTERFIELD	2	DP-354/0600	DP-354/1800
E-141 FEL1 BOB MCDANIEL		09/03	RODOLPHO RODRIQUEZ	1	DP-354/0600	DP-354/1800
E-142 FEL1 WILL LOGGING & CONSTRUCTIO		09/09	ADAM BAKER	1	DP-354/0600	DP-354/1800
E-147 FEL1 SILVER NICKEL LLC		09/07	MARK SMITH	2	DP-354/0600	DP-354/1800
E-148 FEL1 SILVER NICKEL LOGGING		09/07	CASEY SILVERTHORN	2	DP-354/0600	DP-354/1800
E-9C SKD1 SILVER NICKEL LOGGING		09/07	NIK BROOKS	1	DP-354/0600	DP-354/1800
E-10C SKD1 SILVER NICKEL LOGGING		09/01	RILEY BURK	2	DP-354/0600	DP-354/1800
E-11C SKD1 SILVER NICKEL LOGGING		09/02	JOE KIDDERMAN	2	DP-354/0600	DP-354/1800
E-144 SKD4 TJ LOGGING		09/01	WADE FIELD	1	DP-354/0600	DP-354/1800
E-145 SKD1 WILL LOGGING & CONSTR		09/05	COLTEN GRONLUND	1	DP-354/0600	DP-354/1800
E-183 SKD1 BOB MCDANIAL LOGGING		09/05	BRANDON WHEELER	1	DP-354/0600	DP-354/1800
E-113 SKG2 YELLOW JACKET FIRE EQUIPMENT		09/08	NICK BADENHOP	2	DP-354/0600	DP-354/1800
E-139 SKG1 SOFT TRACK ATTACK		09/08	JOSH COVEY	2	DP-354/0600	DP-354/1800
8. Division/Group Communication Summary						
Function	Channel	RX Frequency N/W	RX Tone/NAC	TX Frequency N/W	TX Tone/NAC	Mode
COMMAND	1	170.0625	114.8	162.1750	114.8	A
COMMAND	2	170.3125	114.8	167.8375	114.8	A
COMMAND	3	170.4500	114.8	168.1000	114.8	A
COMMAND	4	172.5375	114.8	163.5500	114.8	A
TACTICAL	8	168.6000	114.8	168.6000	114.8	A
AIR TO GROUND	15	168.1375		168.1375		A
9. Prepared By (Resource Unit Leader)			Approved By (Planning Section Chief)		Date	Time
JILL JOHNSON			MARGE HUTCHINSON		08/29/2021	2000

Division/Group Assignment List (ICS 204 WF)
Controlled Unclassified Information//Basic

1. Incident Name:			3.			
WALKER CREEK & CHICKADEE CREEK			Branch:		Division/Group	
2. Operational Period: DAY/NIGHT			I		H	
Date/Time From: 08/30/2021 0600 MON		Date/Time To: 08/31/2021 0600 TUE				
4. Operations Personnel						
OPERATIONS CHIEF		TONY ENGEL; AARON ROWE JEROMY WILSON (T)		BRANCH DIRECTOR		ZOLLER, CHRIS
SAFETY OFFICER		TROY CORN; JACK CATES		DIVISION/GROUP SUPERVISOR		MATT KENNEDY
5. Resources Assigned this Period						
Strike Team / Task Force / Resource Designator		LWD	Leader	Number Persons	Drop Off PT./Time	Pick Up PT./Time
EERA SELF LOADER			BOB MCDANIEL	2	DP-354/0600	DP-354/1800
E-160 LDFR SILVER NICKEL LOGGING		09/07	BURT SILVERTHORN	1	DP-354/0600	DP-354/1800
O-245 EMPF		09/06	RICHARD SEWELL	1	DP-354/0600	DP-354/1800
6. Control Operations/Work Assignments:						
<p>Task Secure fire edge between A/F break and DP 320. Complete indirect road prep on alternate (indirect) containment line.</p> <p>Purpose Contain fire within current fire perimeter.</p> <p>End State Fire is controlled south and west of the current fire perimeter; indirect containment line is completed.</p>						
7. Special Instructions:						
<p>Division breakout will be at the park pavilion.</p> <p>Notify READ if cultural materials are found during mop up. Leave in place, flag and GPS. READs (D. Pearson, M. Wilson & A. Miller) will notify DIVS when entering or leaving the division.</p>						
8. Division/Group Communication Summary						
Function	Channel	RX Frequency N/W	RX Tone/NAC	TX Frequency N/W	TX Tone/NAC	Mode
COMMAND	1	170.0625	114.8	162.1750	114.8	A
COMMAND	2	170.3125	114.8	167.8375	114.8	A
COMMAND	3	170.4500	114.8	168.1000	114.8	A
COMMAND	4	172.5375	114.8	163.5500	114.8	A
TACTICAL	8	168.6000	114.8	168.6000	114.8	A
AIR TO GROUND	15	168.1375		168.1375		A
9. Prepared By (Resource Unit Leader)			Approved By (Planning Section Chief)		Date	Time
JILL JOHNSON			MARGE HUTCHINSON		08/29/2021	2000

Division/Group Assignment List (ICS 204 WF)
Controlled Unclassified Information//Basic

1. Incident Name:			3.			
WALKER CREEK & CHICKADEE CREEK			Branch:		Division/Group	
2. Operational Period: DAY/NIGHT			II		Q	
Date/Time From: 08/30/2021 0600	MON	Date/Time To: 08/31/2021 0600				
4. Operations Personnel						
OPERATIONS CHIEF		TONY ENGEL; AARON ROWE JEROMY WILSON (T)		BRANCH DIRECTOR		JERRAN FLINDERS
SAFETY OFFICER		TROY CORN; JACK CATES		DIVISION/GROUP SUPERVISOR		MICHAEL GOOD JAMES DICKINSON (T)
5. Resources Assigned this Period						
Strike Team / Task Force / Resource Designator	LWD	Leader	Number Persons	Drop Off PT./Time	Pick Up PT./Time	
O-435 SOF2	09/11	JOSH NORTHRUP	1	DP-372/0600	DP-372/1800	
O-450 SOF2 (T)	09/02	PHIL GRAHAM	1	DP-372/0600	DP-372/1800	
O-285 HEQB	09/01	TRISTAN CURRIN	1	DP-372/0600	DP-372/1800	
E-130.1 HEQB (T)	08/30	JEFFREY BABB	1	DP-372/0600	DP-372/1800	
O-428 HEQB (T)	09/01	CHRIS BRUBAKER	1	DP-372/0600	DP-372/1800	
E-120 ENG6 ARCHER MOUNTAIN ENTERPRISES	09/03	JUSTUS BARTON	3	DP-372/0600	DP-372/1800	
E-130 ENG6 TONASKET RD E692	08/30	DAVE HYLTON	3	DP-372/0600	DP-372/1800	
E-92 DOZ2 PRICE EXCAVATION (DOUBLE SHIFT)	09/03	JAMES PRICE	2	DP-372/0600	DP-372/1800	
E-4C FEL1 WILL LOGGING & CONSTR	09/03	BREDON LATIMER	1	DP-372/0600	DP-372/1800	
E-31C FEL1 NORTH PINE	09/11	SCOTT HUGHES	1	DP-372/0600	DP-372/1800	
E-231 FEL1 MCCUEN	09/03	NATHAN JOHNSON	2	DP-372/0600	DP-372/1800	
E-232 FEL2 NORTH COLUMBIA ENTERPRISES	09/04	DAN LOTZ	2	DP-372/0600	DP-372/1800	
E-237 LOG PROCESSOR WILL LOGGING	09/04	JASON SUTTON	2	DP-372/0600	DP-372/1800	
E-280 LOG PROCESSOR TURLEY LOGGING	09/09	BRAINDON HUBBARD	3	DP-372/0600	DP-372/1800	
E-3C SKD1 WILL LOGGING & CONSTR	09/07	ROGER SMITH	1	DP-372/0600	DP-372/1800	
E-233 SKD2 NORTH COLUMBIA ENTERPR	09/03	DALLES CRAPE	2	DP-372/0600	DP-372/1800	
8. Division/Group Communication Summary						
Function	Channel	RX Frequency N/W	RX Tone/NAC	TX Frequency N/W	TX Tone/NAC	Mode
COMMAND	1	170.0625	114.8	162.1750	114.8	A
COMMAND	2	170.3125	114.8	167.8375	114.8	A
COMMAND	3	170.4500	114.8	168.1000	114.8	A
COMMAND	4	172.5375	114.8	163.5500	114.8	A
TACTICAL	11	168.2500	114.8	168.2500	114.8	A
AIR TO GROUND	15	168.1375		168.1375		A
9. Prepared By (Resource Unit Leader)		Approved By (Planning Section Chief)		Date	Time	
JILL JOHNSON		MARGE HUTCHINSON		08/29/2021	2000	

Division/Group Assignment List (ICS 204 WF)
Controlled Unclassified Information//Basic

1. Incident Name:				3.		
WALKER CREEK & CHICKADEE CREEK				Branch: II	Division/Group Q	
2. Operational Period: DAY/NIGHT						
Date/Time From: 08/30/2021 0600 MON		Date/Time To: 08/31/2021 0600 TUE				
4. Operations Personnel						
OPERATIONS CHIEF		TONY ENGEL; AARON ROWE JEROMY WILSON (T)		BRANCH DIRECTOR		JERRAN FLINDERS
SAFETY OFFICER		TROY CORN; JACK CATES		DIVISION/GROUP SUPERVISOR		MICHAEL GOOD JAMES DICKINSON (T)
5. Resources Assigned this Period						
Strike Team / Task Force / Resource Designator		LWD	Leader	Number Persons	Drop Off PT./Time	Pick Up PT./Time
E-234 SKD2 NORTH COLUMBIA ENTERPRISES		09/03	TOM LOTZE	2	DP-372/0600	DP-372/1800
E-199 MAST EAGLE CAP		08/31	BEN FISCHER	2	DP-372/0600	DP-372/1800
E-200 MAST BRUCE YOUNG LOGGING		09/07	MATT MCLAREN	2	DP-372/0600	DP-372/1800
E-277 MAST SWEDBERG CONTRACTING CORP.		09/09	STEVEN MEDDOCK	2	DP-372/0600	DP-372/1800
O-221 EMPF		09/05	DAVE BRIDGES	1	DP-372/0600	DP-372/1800
6. Control Operations/Work Assignments:						
<p>Task Complete indirect line utilizing road systems between H/Q and Q/T break. Limit road prep to the extent needed to contain fire progression; consider predicted weather, seasonality and the likelihood of future fire progression the north.</p> <p>Purpose Establish an indirect containment line to be used if fire progression continues to the north in DIVS Q.</p> <p>End State Indirect line established between H/Q and Q/T break; line is suitable for firing operation to limit potential future fire progression to the north.</p>						
7. Special Instructions:						
<p>Division breakout will be at H30</p> <p>Notify READ if cultural materials are found during mop up. Leave in place, flag and GPS. READs (D. Pearson, M. Wilson & A. Miller) will notify DIVS when entering or leaving the division.</p>						
8. Division/Group Communication Summary						
Function	Channel	RX Frequency N/W	RX Tone/NAC	TX Frequency N/W	TX Tone/NAC	Mode
COMMAND	1	170.0625	114.8	162.1750	114.8	A
COMMAND	2	170.3125	114.8	167.8375	114.8	A
COMMAND	3	170.4500	114.8	168.1000	114.8	A
COMMAND	4	172.5375	114.8	163.5500	114.8	A
TACTICAL	11	168.2500	114.8	168.2500	114.8	A
AIR TO GROUND	15	168.1375		168.1375		A
9. Prepared By (Resource Unit Leader)			Approved By (Planning Section Chief)		Date	Time
JILL JOHNSON			MARGE HUTCHINSON		08/29/2021	2000

Division/Group Assignment List (ICS 204 WF)
Controlled Unclassified Information//Basic

1. Incident Name:			3.			
WALKER CREEK & CHICKADEE CREEK			Branch:		Division/Group	
2. Operational Period: DAY/NIGHT			II		T	
Date/Time From: 08/30/2021 0600	MON	Date/Time To: 08/31/2021 0600				
4. Operations Personnel						
OPERATIONS CHIEF		TONY ENGEL; AARON ROWE JEROMY WILSON (T)		BRANCH DIRECTOR		JERRAN FLINDERS
SAFETY OFFICER		TROY CORN; JACK CATES		DIVISION/GROUP SUPERVISOR		MICHAEL JACKSON
5. Resources Assigned this Period						
Strike Team / Task Force / Resource Designator	LWD	Leader	Number Persons	Drop Off PT./Time	Pick Up PT./Time	
O-435 SOF2	09/11	JOSH NORTHRUP	1	DP-372/0600	DP-372/1800	
O-450 SOF2 (T)	09/02	PHIL GRAHAM	1	DP-372/0600	DP-372/1800	
O-286 TFLD (T)	09/01	KEVIN CARLSEN	1	DP-372/0600	DP-372/1800	
O-23 FMOD BAILEY LOGGING	09/03	TAYLOR EVANS	2	DP-372/0600	DP-372/1800	
C-22 HC2 PR REFORESTATION	09/01	MARCO MENDOZA	20	DP-372/0600	DP-372/1800	
E-212 ENG4 FIRE WORKS	09/01	LAWRENCE GROVER	3	DP-372/0600	DP-372/1800	
E-214 ENG6 WHITEHEAD REFORESTATION	08/31	JOHN MIX	3	DP-372/0600	DP-372/1800	
E-219 ENG3 HEK JONES	09/02	BRINN JONES	3	DP-372/0600	DP-372/1800	
E-220 ENG4 OWSLEY CANYON ENG CO	09/01	DANNY CALLAHAN	3	DP-372/0600	DP-372/1800	
E-261 ENG5 LATE SUMMERS WILDFIRE	09/07	JOSH CROLLARD	3	DP-372/0600	DP-372/1800	
E-338 ENG6 AEGIS LOGISTICS	09/11	ROY VARNEY	3	DP-372/0600	DP-372/1800	
E-339 ENG6 BLACK PINE CONTRACTING	09/12		3	DP-372/0600	DP-372/1800	
E-340 ENG6 STCN 11 - B11-14	09/12	ZAK BEER	3	DP-372/0600	DP-372/1800	
E-23 WTS1 OROVILLE TRANSIT MIX	08/30	GORDON WOOLEY	3	DP-372/0600	DP-372/1800	
E-351 WTS2 TIMBERLINE TRUCKING	09/12	CALVIN GARRISON	1	DP-372/0600	DP-372/1800	
8. Division/Group Communication Summary						
Function	Channel	RX Frequency N/W	RX Tone/NAC	TX Frequency N/W	TX Tone/NAC	Mode
COMMAND	1	170.0625	114.8	162.1750	114.8	A
COMMAND	2	170.3125	114.8	167.8375	114.8	A
COMMAND	3	170.4500	114.8	168.1000	114.8	A
COMMAND	4	172.5375	114.8	163.5500	114.8	A
TACTICAL	9	166.7250	114.8	166.7250	114.8	A
AIR TO GROUND	15	168.1375		168.1375		A
9. Prepared By (Resource Unit Leader)			Approved By (Planning Section Chief)		Date	Time
JILL JOHNSON			MARGE HUTCHINSON		08/29/2021	2000

Division/Group Assignment List (ICS 204 WF)
Controlled Unclassified Information//Basic

1. Incident Name:				3.		
WALKER CREEK & CHICKADEE CREEK				Branch: II	Division/Group T	
2. Operational Period: DAY/NIGHT						
Date/Time From: 08/30/2021 0600 MON		Date/Time To: 08/31/2021 0600 TUE				
4. Operations Personnel						
OPERATIONS CHIEF		TONY ENGEL; AARON ROWE JEROMY WILSON (T)		BRANCH DIRECTOR		JERRAN FLINDERS
SAFETY OFFICER		TROY CORN; JACK CATES		DIVISION/GROUP SUPERVISOR		MICHAEL JACKSON
5. Resources Assigned this Period						
Strike Team / Task Force / Resource Designator		LWD	Leader	Number Persons	Drop Off PT./Time	Pick Up PT./Time
E-352 WTS2 H & H FIRE CONTRACTING		09/12	TOM FERRO	1	DP-372/0600	DP-372/1800
E-20C DOZ3 SILVER-NICKEL LOGGING		08/30	GERALD SCHOLZ	2	DP-372/0600	DP-372/1800
E-80 DOZ3 MCMILLAN CONSTRUCTION		08/20	DOUG MCMILLAN	2	DP-372/0600	DP-372/1800
E-181 DOZ3 MC NALL CONSTRUCTION		09/08	BRYAN TIM	2	DP-372/0600	DP-372/1800
E-114 SKDS SOFT TRACK ATTACK		08/30	DJ MCCRACKEN	2	DP-372/0600	DP-372/1800
E-146 EXCA STOTTS CONSTRUCTION		09/01	MILES ANDERSON	2	DP-372/0600	DP-372/1800
E-334 SKG2 PRICE EXCAVATION		09/13		2	DP-372/0600	DP-372/1800
O-396.1 EMPF		09/06	MACK MARIN	1	DP-372/0600	DP-372/1800
8. Division/Group Communication Summary						
Function	Channel	RX Frequency N/W	RX Tone/NAC	TX Frequency N/W	TX Tone/NAC	Mode
COMMAND	1	170.0625	114.8	162.1750	114.8	A
COMMAND	2	170.3125	114.8	167.8375	114.8	A
COMMAND	3	170.4500	114.8	168.1000	114.8	A
COMMAND	4	172.5375	114.8	163.5500	114.8	A
TACTICAL	9	166.7250	114.8	166.7250	114.8	A
AIR TO GROUND	15	168.1375		168.1375		A
9. Prepared By (Resource Unit Leader)			Approved By (Planning Section Chief)		Date	Time
JILL JOHNSON			MARGE HUTCHINSON		08/29/2021	2000

Division/Group Assignment List (ICS 204 WF)
Controlled Unclassified Information//Basic

1. Incident Name:				3.			
WALKER CREEK & CHICKADEE CREEK				Branch:		Division/Group	
2. Operational Period: DAY/NIGHT				II		T	
Date/Time From: 08/30/2021 0600 MON		Date/Time To: 08/31/2021 0600 TUE					
4. Operations Personnel							
OPERATIONS CHIEF		TONY ENGEL; AARON ROWE JEROMY WILSON (T)		BRANCH DIRECTOR		JERRAN FLINDERS	
SAFETY OFFICER		TROY CORN; JACK CATES		DIVISION/GROUP SUPERVISOR		MICHAEL JACKSON	
5. Resources Assigned this Period							
Strike Team / Task Force / Resource Designator		LWD	Leader	Number Persons	Drop Off PT./Time	Pick Up PT./Time	
6. Control Operations/Work Assignments:							
<p>Task Secure and mop up fire perimeter between Q/T break to T/A break; consider predicted weather, seasonality and the likelihood of future fire progression beyond the current fire perimeter.</p> <p>Purpose Fire is contained east of the current fire perimeter.</p> <p>End State Fire perimeter between Q/T break and T/A break is controlled; threat of future fire progression to the west is limited.</p>							
7. Special Instructions:							
<p>Division breakout will be at DP-372.</p> <p>Notify READ if cultural materials are found during mop up. Leave in place, flag and GPS. READs (D. Pearson, M. Wilson & A. Miller) will notify DIVS when entering or leaving the division.</p> <p>Engines E-219 and E-261 may be utilized as logistical support for Tonasket Base Camp.</p>							
8. Division/Group Communication Summary							
Function	Channel	RX Frequency N/W	RX Tone/NAC	TX Frequency N/W	TX Tone/NAC	Mode	
COMMAND	1	170.0625	114.8	162.1750	114.8	A	
COMMAND	2	170.3125	114.8	167.8375	114.8	A	
COMMAND	3	170.4500	114.8	168.1000	114.8	A	
COMMAND	4	172.5375	114.8	163.5500	114.8	A	
TACTICAL	9	166.7250	114.8	166.7250	114.8	A	
AIR TO GROUND	15	168.1375		168.1375		A	
9. Prepared By (Resource Unit Leader)			Approved By (Planning Section Chief)			Date	Time
JILL JOHNSON			MARGE HUTCHINSON			08/29/2021	2000

Division/Group Assignment List (ICS 204 WF)
Controlled Unclassified Information//Basic

1. Incident Name:				3.		
WALKER CREEK & CHICKADEE CREEK				Branch:	Division/Group C	
2. Operational Period: DAY/NIGHT						
Date/Time From: 08/30/2021 0600 MON		Date/Time To: 08/31/2021 0600 TUE				
4. Operations Personnel						
OPERATIONS CHIEF		TONY ENGEL; AARON ROWE JEROMY WILSON (T)		BRANCH DIRECTOR		
SAFETY OFFICER		TROY CORN; JACK CATES		DIVISION/GROUP SUPERVISOR		BOB HINDS
5. Resources Assigned this Period						
Strike Team / Task Force / Resource Designator	LWD	Leader	Number Persons	Drop Off PT./Time	Pick Up PT./Time	
O-465 SOF2	09/12	LEA WOFFORD	1	SPEARS RANCH/0600	SPEARS RANCH/1800	
O-436 SOF2 (T)	09/12	TAIJA CORSO	1	SPEARS RANCH/0600	SPEARS RANCH/1800	
O-294 TFLD	09/02	SHANNON MOORE	1	SPEARS RANCH/0600	SPEARS RANCH/1800	
O-377 TFLD	09/07	STEPHEN DECOOK	1	SPEARS RANCH/0600	SPEARS RANCH/1800	
O-423 HEQB	09/09	KYLE BUCKMILLER	1	SPEARS RANCH/0600	SPEARS RANCH/1800	
O-457 HEQB (T)	09/10	AARON NELSON	1	SPEARS RANCH/0600	SPEARS RANCH/1800	
O-9001 HEQB (LOAN)	08/30	ANDY TOWNSEND	1	SPEARS RANCH/0600	SPEARS RANCH/1800	
O-9002 HEQB (LOAN)	09/08	SKYLER GOODRICH	1	SPEARS RANCH/0600	SPEARS RANCH/1800	
O-9006 HEQB (LOAN)	09/08	MATT SMITH	1	SPEARS RANCH/0600	SPEARS RANCH/1800	
O-247 FMOD BROTHERS FIRE LLC	08/30	TOM HOFFMAN	2	SPEARS RANCH/0600	SPEARS RANCH/1800	
C-78 HC1 BONNEVILLE IHC	09/09	ERIC EVANS	21	SPEARS RANCH/0600	SPEARS RANCH/1800	
C-69 HC2I DIAMOND FIRE 2B	08/31	BRADLEY EMERY	20	SPEARS RANCH/0600	SPEARS RANCH/1800	
C-80 HC2 COLVILLE 1	09/08	URIAH MARCONI	21	SPEARS RANCH/0600	SPEARS RANCH/1800	
C-9003 HC2I HIGHLANDS (LOAN)		SETH SCHERTENLEIB	20	SPEARS RANCH/0600	SPEARS RANCH/1800	
E-255 ENG4 WILD FIRE SERVICES	09/07	STEVE KURVAINK	3	SPEARS RANCH/0600	SPEARS RANCH/1800	
8. Division/Group Communication Summary						
Function	Channel	RX Frequency N/W	RX Tone/NAC	TX Frequency N/W	TX Tone/NAC	Mode
COMMAND	1	170.0625	114.8	162.1750	114.8	A
COMMAND	2	170.3125	114.8	167.8375	114.8	A
COMMAND	3	170.4500	114.8	168.1000	114.8	A
COMMAND	4	172.5375	114.8	163.5500	114.8	A
TACTICAL	10	166.7750	114.8	166.7750	114.8	A
AIR TO GROUND	13	170.2625		170.2625		A
9. Prepared By (Resource Unit Leader)			Approved By (Planning Section Chief)		Date	Time
JILL JOHNSON			MARGE HUTCHINSON		08/29/2021	2000

Division/Group Assignment List (ICS 204 WF)
Controlled Unclassified Information//Basic

1. Incident Name:				3.		
WALKER CREEK & CHICKADEE CREEK				Branch:	Division/Group C	
2. Operational Period: DAY/NIGHT						
Date/Time From: 08/30/2021 0600 MON		Date/Time To: 08/31/2021 0600 TUE				
4. Operations Personnel						
OPERATIONS CHIEF		TONY ENGEL; AARON ROWE JEROMY WILSON (T)		BRANCH DIRECTOR		
SAFETY OFFICER		TROY CORN; JACK CATES		DIVISION/GROUP SUPERVISOR		BOB HINDS
5. Resources Assigned this Period						
Strike Team / Task Force / Resource Designator		LWD	Leader	Number Persons	Drop Off PT./Time	Pick Up PT./Time
E-257 ENG5 METHOW RIVER WILD FIRE		09/07	ALEX WHITMAN	3	SPEARS RANCH/0600	SPEARS RANCH/1800
E-336 ENG5 KALISPEL BRUSH-1		09/12	RYAN MARTIN	3	SPEARS RANCH/0600	SPEARS RANCH/1800
E-337 ENG6 THE GENERAL		09/10	PAUL ANDERSON	2	SPEARS RANCH/0600	SPEARS RANCH/1800
E-16C WTS2 S PEND OREILLE T33		09/08	PAUL HAA	1	SPEARS RANCH/0600	SPEARS RANCH/1800
E-136 WTS2 OVERWATCH		09/08	ANDY ROMERO	1	SPEARS RANCH/0600	SPEARS RANCH/1800
E-350 WTS2 JOE PEONE LOGGING		09/12	DUANE HALL	1	SPEARS RANCH/0600	SPEARS RANCH/1800
E-12C DOZ2 KENNETH & DIANE SASSE		09/01	BURT SASSE	2	SPEARS RANCH/0600	SPEARS RANCH/1800
E-29C DOZ4 GASHO & GASHO		08/31	ANDY GASHO	1	SPEARS RANCH/0600	SPEARS RANCH/1800
E-201 DOZ3 HAVILLAH LOGGING CO		08/30	DAVID GOYETTE	2	SPEARS RANCH/0600	SPEARS RANCH/1800
E-23C GRD DOUBLE A LOGGING		08/31	SHAWN NIGG	1	SPEARS RANCH/0600	SPEARS RANCH/1800
E-14C EXCA WILL LOGGING & CONSTR		09/04	GARY WILLER SR	1	SPEARS RANCH/0600	SPEARS RANCH/1800
E-15C EXCA GASHO & GASHO		09/03	NICK MCCULLUM	2	SPEARS RANCH/0600	SPEARS RANCH/1800
E-17C FEL1 RIDGELINE FORESTRY		09/07	DARREN GOETZ	2	SPEARS RANCH/0600	SPEARS RANCH/1800
E-202 FEL1 HAVILLAH LOGGING		09/11	TOM KERSHNER	1	SPEARS RANCH/0600	SPEARS RANCH/1800
E-26 SKG1 WYEAST FORESTRY MANAGEMENT		08/30	BOYD GOLDFINCH	2	SPEARS RANCH/0600	SPEARS RANCH/1800
8. Division/Group Communication Summary						
Function	Channel	RX Frequency N/W	RX Tone/NAC	TX Frequency N/W	TX Tone/NAC	Mode
COMMAND	1	170.0625	114.8	162.1750	114.8	A
COMMAND	2	170.3125	114.8	167.8375	114.8	A
COMMAND	3	170.4500	114.8	168.1000	114.8	A
COMMAND	4	172.5375	114.8	163.5500	114.8	A
TACTICAL	10	166.7750	114.8	166.7750	114.8	A
AIR TO GROUND	13	170.2625		170.2625		A
9. Prepared By (Resource Unit Leader)			Approved By (Planning Section Chief)		Date	Time
JILL JOHNSON			MARGE HUTCHINSON		08/29/2021	2000

Division/Group Assignment List (ICS 204 WF)
Controlled Unclassified Information//Basic

1. Incident Name:				3.		
WALKER CREEK & CHICKADEE CREEK				Branch:	Division/Group C	
2. Operational Period: DAY/NIGHT						
Date/Time From: 08/30/2021 0600 MON		Date/Time To: 08/31/2021 0600 TUE				
4. Operations Personnel						
OPERATIONS CHIEF		TONY ENGEL; AARON ROWE JEROMY WILSON (T)		BRANCH DIRECTOR		
SAFETY OFFICER		TROY CORN; JACK CATES		DIVISION/GROUP SUPERVISOR		BOB HINDS
5. Resources Assigned this Period						
Strike Team / Task Force / Resource Designator		LWD	Leader	Number Persons	Drop Off PT./Time	Pick Up PT./Time
E-333 SKG1 TIGER TRUCKING		09/10	CLINTON GLOVER	2	SPEARS RANCH/0600	SPEARS RANCH/1800
E-18C SKD2 RIDGELINE FORESTRY		08/30	MICHAEL GOETZ	2	SPEARS RANCH/0600	SPEARS RANCH/1800
E-21C SKD2 DOUBLE A LOGGING 1		09/08	SHAWN NIGG	1	SPEARS RANCH/0600	SPEARS RANCH/1800
E-205 SKD2 HAVILLAH LOGGING		09/10	BRANDON SUTTON	1	SPEARS RANCH/0600	SPEARS RANCH/1800
E-204 MAST HAVILLAH LOGGIN		09/11	RICK CLOUGH	1	SPEARS RANCH/0600	SPEARS RANCH/1800
E-353 LOG PROCESSOR RIDGELINE FORESTRY		09/11		2	SPEARS RANCH/0600	SPEARS RANCH/1800
E-55 AMBU PEND OREILLE AMBU 2 (ALS)		09/11	HASTINGS	2	SPEARS RANCH/0600	SPEARS RANCH/1800
O-273 EMPF		09/06	KEVIN SMITH	1	SPEARS RANCH/0600	SPEARS RANCH/1800
O-160 EMTF		09/01	MARA LANDRUM	1	SPEARS RANCH/0600	SPEARS RANCH/1800
6. Control Operations/Work Assignments:						
<p>TASK: Secure primary firelines by constructing direct lines where possible, and burning small blocks when conditions allow. PURPOSE: Minimize acres burned with the best chances of success for containing the fire. END STATE: Fireline in the correct location with the best chances of success for containing the fire.</p> <p>TASK: Complete road prep and identification of alternate and contingency fireline locations. PURPOSE: Identify fireline placement locations. END STATE: Fireline with the highest probability of success is identified.</p>						
7. Special Instructions:						
Division breakout will be at DP-145.						
8. Division/Group Communication Summary						
Function	Channel	RX Frequency N/W	RX Tone/NAC	TX Frequency N/W	TX Tone/NAC	Mode
COMMAND	1	170.0625	114.8	162.1750	114.8	A
COMMAND	2	170.3125	114.8	167.8375	114.8	A
COMMAND	3	170.4500	114.8	168.1000	114.8	A
COMMAND	4	172.5375	114.8	163.5500	114.8	A
TACTICAL	10	166.7750	114.8	166.7750	114.8	A
AIR TO GROUND	13	170.2625		170.2625		A
9. Prepared By (Resource Unit Leader)			Approved By (Planning Section Chief)		Date	Time
JILL JOHNSON			MARGE HUTCHINSON		08/29/2021	2000

Division/Group Assignment List (ICS 204 WF)
Controlled Unclassified Information//Basic

1. Incident Name:				3.		
WALKER CREEK & CHICKADEE CREEK				Branch:	Division/Group K/O	
2. Operational Period: DAY/NIGHT						
Date/Time From: 08/30/2021 0600 MON		Date/Time To: 08/31/2021 0600 TUE				
4. Operations Personnel						
OPERATIONS CHIEF		TONY ENGEL; AARON ROWE JEROMY WILSON (T)		BRANCH DIRECTOR		
SAFETY OFFICER		TROY CORN; JACK CATES		DIVISION/GROUP SUPERVISOR		CHET DIERINGER SAM STEINSHOUER (T)
5. Resources Assigned this Period						
Strike Team / Task Force / Resource Designator	LWD	Leader	Number Persons	Drop Off PT./Time	Pick Up PT./Time	
O-465 SOF2	09/12	LEA WOFFORD	1	SPEARS RANCH/0600	SPEARS RANCH/1800	
O-436 SOF2 (T)	09/12	TAIJA CORSO	1	SPEARS RANCH/0600	SPEARS RANCH/1800	
O-359 TFLD (T)	09/06	RYAN ROMERO	1	SPEARS RANCH/0600	SPEARS RANCH/1800	
O-376 TFLD	09/05	BENNY MENDOZA	1	SPEARS RANCH/0600	SPEARS RANCH/1800	
O-432 HEQB	09/09	DAVID MORRILL	1	SPEARS RANCH/0600	SPEARS RANCH/1800	
O-250 FMOD FALLER MODULE	08/30	WADE GIGUERE	2	SPEARS RANCH/0600	SPEARS RANCH/1800	
C-70 HC2I UMA #1	08/31	NICK LACEY	18	SPEARS RANCH/0600	SPEARS RANCH/1800	
C-71 HC2 TORRES CONTRACTING CREW-11	09/01	EMILIO MELGAREJO	20	SPEARS RANCH/0600	SPEARS RANCH/1800	
C-81 HC2 LAVA RIVER FORESTRY 4	09/09	JOSH MARTINEZ	20	SPEARS RANCH/0600	SPEARS RANCH/1800	
E- ENG5 DNR ENG (LOAN)			3	SPEARS RANCH/0600	SPEARS RANCH/1800	
E- ENG5 DNR ENG (LOAN)			3	SPEARS RANCH/0600	SPEARS RANCH/1800	
E- ENG5 DNR ENG (LOAN)			3	SPEARS RANCH/0600	SPEARS RANCH/1800	
E- ENG5 DNR ENG (LOAN)			3	SPEARS RANCH/0600	SPEARS RANCH/1800	
E- ENG5 DNR ENG (LOAN)			3	SPEARS RANCH/0600	SPEARS RANCH/1800	
8. Division/Group Communication Summary						
Function	Channel	RX Frequency N/W	RX Tone/NAC	TX Frequency N/W	TX Tone/NAC	Mode
COMMAND	1	170.0625	114.8	162.1750	114.8	A
COMMAND	2	170.3125	114.8	167.8375	114.8	A
COMMAND	3	170.4500	114.8	168.1000	114.8	A
COMMAND	4	172.5375	114.8	163.5500	114.8	A
TACTICAL	7	168.2000	114.8	168.2000	114.8	A
AIR TO GROUND	13	170.2625		170.2625		A
9. Prepared By (Resource Unit Leader)			Approved By (Planning Section Chief)		Date	Time
JILL JOHNSON			MARGE HUTCHINSON		08/29/2021	2000

Division/Group Assignment List (ICS 204 WF)
Controlled Unclassified Information//Basic

1. Incident Name:				3.		
WALKER CREEK & CHICKADEE CREEK				Branch:	Division/Group K/O	
2. Operational Period: DAY/NIGHT						
Date/Time From: 08/30/2021 0600 MON		Date/Time To: 08/31/2021 0600 TUE				
4. Operations Personnel						
OPERATIONS CHIEF		TONY ENGEL; AARON ROWE JEROMY WILSON (T)		BRANCH DIRECTOR		
SAFETY OFFICER		TROY CORN; JACK CATES		DIVISION/GROUP SUPERVISOR		CHET DIERINGER SAM STEINSHOUER (T)
5. Resources Assigned this Period						
Strike Team / Task Force / Resource Designator	LWD	Leader	Number Persons	Drop Off PT./Time	Pick Up PT./Time	
E-6C WTS2 TOLLEFSON CONSTR	09/06	EVAN BEVIER	1	SPEARS RANCH/0600	SPEARS RANCH/1800	
E-176 WTS2 BTNG WILDFIRE (R&R-8/31-9/1)	08/29	LUKE JOHNSON	1	SPEARS RANCH/0600	SPEARS RANCH/1800	
E-177 WTS1 DOUBLE A LOGGING	08/26	TONY BROWN	1	SPEARS RANCH/0600	SPEARS RANCH/1800	
E-27C DOZ3 WILL LOGGING & CONSTR	08/31	GARY WILL JR	1	SPEARS RANCH/0600	SPEARS RANCH/1800	
E-25C EXCA DOUBLE A LOGGING	09/09	TOM ACORD	1	SPEARS RANCH/0600	SPEARS RANCH/1800	
E-138 SKG1 SOFT TRACK ATTACK	09/04	JOSH COVEY	2	SPEARS RANCH/0600	SPEARS RANCH/1800	
E-197 SKG3 TUNK CREEK LLC	09/04	DYLAN GREEN	2	SPEARS RANCH/0600	SPEARS RANCH/1800	
E-22C SKD2 DOUBLE A LOGGING	09/10	RYAN ANDERSON	1	SPEARS RANCH/0600	SPEARS RANCH/1800	
E-112 SKDS SOFTTRACK ATTACK	09/05	PATRICK PRICE	2	SPEARS RANCH/0600	SPEARS RANCH/1800	
E-140 SKDS SPENCER LOGGING LLC	09/05	COLE SPENCER	2	SPEARS RANCH/0600	SPEARS RANCH/1800	
E-348 SKD1 TURLEY LOGGING	09/12	CODY HUBBARD	2	SPEARS RANCH/0600	SPEARS RANCH/1800	
E-203 MAST HAVILLAH LOGGIN	08/30	TIM KERSHNER	1	SPEARS RANCH/0600	SPEARS RANCH/1800	
E-354 LOG DOUBLE A LOG LOADER	09/11		2	SPEARS RANCH/0600	SPEARS RANCH/1800	
E-355 LOG PROCESSOR DOUBLE A	09/11		2	SPEARS RANCH/0600	SPEARS RANCH/1800	
8. Division/Group Communication Summary						
Function	Channel	RX Frequency N/W	RX Tone/NAC	TX Frequency N/W	TX Tone/NAC	Mode
COMMAND	1	170.0625	114.8	162.1750	114.8	A
COMMAND	2	170.3125	114.8	167.8375	114.8	A
COMMAND	3	170.4500	114.8	168.1000	114.8	A
COMMAND	4	172.5375	114.8	163.5500	114.8	A
TACTICAL	7	168.2000	114.8	168.2000	114.8	A
AIR TO GROUND	13	170.2625		170.2625		A
9. Prepared By (Resource Unit Leader)		Approved By (Planning Section Chief)		Date	Time	
JILL JOHNSON		MARGE HUTCHINSON		08/29/2021	2000	

Division/Group Assignment List (ICS 204 WF)
Controlled Unclassified Information//Basic

1. Incident Name:				3.		
WALKER CREEK & CHICKADEE CREEK				Branch:	Division/Group K/O	
2. Operational Period: DAY/NIGHT						
Date/Time From: 08/30/2021 0600 MON		Date/Time To: 08/31/2021 0600 TUE				
4. Operations Personnel						
OPERATIONS CHIEF		TONY ENGEL; AARON ROWE JEROMY WILSON (T)		BRANCH DIRECTOR		
SAFETY OFFICER		TROY CORN; JACK CATES		DIVISION/GROUP SUPERVISOR		CHET DIERINGER SAM STEINSHOUER (T)
5. Resources Assigned this Period						
Strike Team / Task Force / Resource Designator		LWD	Leader	Number Persons	Drop Off PT./Time	Pick Up PT./Time
O-220 EMTF		09/04	RYAN SATCHER	1	SPEARS RANCH/0600	SPEARS RANCH/1800
O-272 EMPF		09/03	MICHAEL COOPER	1	SPEARS RANCH/0600	SPEARS RANCH/1800
O-461 EMPF		09/05	KYLE MEADE	1	SPEARS RANCH/0600	SPEARS RANCH/1800
6. Control Operations/Work Assignments:						
<p>Task Secure and mop up fire perimeter between C/K break and O/C break; consider predicted weather, seasonality and likelihood of future fire progression beyond the current fire perimeter.</p> <p>Purpose Fire is contained within the current fire perimeter.</p> <p>End State Fire is controlled within the current fire perimeter between C/K break and O/C break.</p>						
7. Special Instructions:						
Division breakout will be at DP-140.						
8. Division/Group Communication Summary						
Function	Channel	RX Frequency N/W	RX Tone/NAC	TX Frequency N/W	TX Tone/NAC	Mode
COMMAND	1	170.0625	114.8	162.1750	114.8	A
COMMAND	2	170.3125	114.8	167.8375	114.8	A
COMMAND	3	170.4500	114.8	168.1000	114.8	A
COMMAND	4	172.5375	114.8	163.5500	114.8	A
TACTICAL	7	168.2000	114.8	168.2000	114.8	A
AIR TO GROUND	13	170.2625		170.2625		A
9. Prepared By (Resource Unit Leader)			Approved By (Planning Section Chief)		Date	Time
JILL JOHNSON			MARGE HUTCHINSON		08/29/2021	2000

Division/Group Assignment List (ICS 204 WF)
Controlled Unclassified Information//Basic

1. Incident Name:				3.		
WALKER CREEK & CHICKADEE CREEK				Branch:	Division/Group NIGHT	
2. Operational Period: DAY/NIGHT						
Date/Time From: 08/30/2021 0600 MON		Date/Time To: 08/31/2021 0600 TUE				
4. Operations Personnel						
OPERATIONS CHIEF		TONY ENGEL; AARON ROWE JEROMY WILSON (T)		BRANCH DIRECTOR		
SAFETY OFFICER		TROY CORN; JACK CATES		DIVISION/GROUP SUPERVISOR		DANIEL GLEASON SUSAN GREENLEAF (T)
5. Resources Assigned this Period						
Strike Team / Task Force / Resource Designator		LWD	Leader	Number Persons	Drop Off PT./Time	Pick Up PT./Time
O-304 STEN (T)		08/31	PEDRO OLAGUE	1	BASE CAMP/1800	BASE CAMP/0600
E-14 ENG5 J3 CONTRACTING		08/18	TAYLOR EASLEY	3	BASE CAMP/1800	BASE CAMP/0600
E-19 ENG5 LL MEADOW WF (R&R)		09/03	DAMIAN RAMON	3	BASE CAMP/1800	BASE CAMP/0600
E-115 ENG3 OUTBACK FIREFIGHTING		09/07	SEAN WEST	3	BASE CAMP/1800	BASE CAMP/0600
E-116 ENG6 TORCH FIRE AND SECURITY		09/08	TRINITY KRIVANEC	3	BASE CAMP/1800	BASE CAMP/0600
E-122 ENG6 SMITHFIELD FD E640		09/01	DUSTIN HOOTON	2	BASE CAMP/1800	BASE CAMP/0600
E-156 WTS2 H & H ENTERPRISES		09/03	MARK ANDERSON	1	BASE CAMP/1800	BASE CAMP/0600
E-114 SKDS SOFT TRACK ATTACK		08/30	STEVE BONNER	2	BASE CAMP/1800	BASE CAMP/0600
O-462 EMPF		09/11	JOSH COUNTS	1	BASE CAMP/1800	BASE CAMP/0600
8. Division/Group Communication Summary						
Function	Channel	RX Frequency N/W	RX Tone/NAC	TX Frequency N/W	TX Tone/NAC	Mode
COMMAND	1	170.0625	114.8	162.1750	114.8	A
COMMAND	2	170.3125	114.8	167.8375	114.8	A
COMMAND	3	170.4500	114.8	168.1000	114.8	A
COMMAND	4	172.5375	114.8	163.5500	114.8	A
TACTICAL	10	166.7750	114.8	166.7750	114.8	A
AIR TO GROUND	13	170.2625		170.2625		A
AIR TO GROUND	15	168.1375		168.1375		A
9. Prepared By (Resource Unit Leader)			Approved By (Planning Section Chief)		Date	Time
JILL JOHNSON			MARGE HUTCHINSON		08/29/2021	2000

Division/Group Assignment List (ICS 204 WF)
Controlled Unclassified Information//Basic

1. Incident Name:			3.			
WALKER CREEK & CHICKADEE CREEK			Branch:		Division/Group	
2. Operational Period: DAY/NIGHT					NIGHT	
Date/Time From: 08/30/2021 0600 MON		Date/Time To: 08/31/2021 0600 TUE				
4. Operations Personnel						
OPERATIONS CHIEF		TONY ENGEL; AARON ROWE JEROMY WILSON (T)		BRANCH DIRECTOR		
SAFETY OFFICER		TROY CORN; JACK CATES		DIVISION/GROUP SUPERVISOR		DANIEL GLEASON SUSAN GREENLEAF (T)
5. Resources Assigned this Period						
Strike Team / Task Force / Resource Designator		LWD	Leader	Number Persons	Drop Off PT./Time	Pick Up PT./Time
6. Control Operations/Work Assignments:						
<p>Task Patrol Chickadee and Walker incidents; secure fire line in areas with recent burn out operations as needed; mop up areas that pose threat to structures.</p> <p>Purpose Limit fire spread outside of established control lines; limit threat to structures.</p> <p>End State Fire is contained within established control lines; structures are not threatened.</p>						
7. Special Instructions:						
Division breakout will be at breezeway.						
8. Division/Group Communication Summary						
Function	Channel	RX Frequency N/W	RX Tone/NAC	TX Frequency N/W	TX Tone/NAC	Mode
COMMAND	1	170.0625	114.8	162.1750	114.8	A
COMMAND	2	170.3125	114.8	167.8375	114.8	A
COMMAND	3	170.4500	114.8	168.1000	114.8	A
COMMAND	4	172.5375	114.8	163.5500	114.8	A
TACTICAL	10	166.7750	114.8	166.7750	114.8	A
AIR TO GROUND	13	170.2625		170.2625		A
AIR TO GROUND	15	168.1375		168.1375		A
9. Prepared By (Resource Unit Leader)			Approved By (Planning Section Chief)		Date	Time
JILL JOHNSON			MARGE HUTCHINSON		08/29/2021	2000

AIR OPERATIONS SUMMARY

Controlled Unclassified Information//Basic

PREPARED BY: Greg Reser AOB (t)

PREPARED DATE/TIME: 8/29/2021 1900

1. INCIDENT NAME: Walker Cr. /Chickadee Cr.		2. OPERATIONAL PERIOD DATE: 8/30/21 START TIME: 0800 END TIME: 2000 SUNRISE: 0612 SUNSET: 1945 Pumpkin 2015				
3. REMARKS (Safety Notes, Hazards, Air Operations Special Equipment, etc.):					4. Ready Alert aircraft: Order ALS air ambulance (Lifeflight) through NEWICC Dispatch. Closest ALS helicopters are out of Brewster, WA with a 25 min flight time to the Walker fire. <u>Special remarks:</u> Wenatchee Short Haul 3JR at Lake Chelan, WA Airport. Response time roughly 45min to incident. Order thru AOB. Review Military Training Route activity and status each morning prior to missions. <u>Aviation Support Equipment:</u> WTS2 E-227 @ Omak Helibase Helibase Support Trailer E-36 @ Omak Helibase <u>Email cost to:</u> WalkerSpur.Aviation@gmail.com	
5. Helibase location Omak (OMK) 48-27.864617N 119-31.083250W Elev: 1,304' Base Phone: 360-489-7654 Unicom: OMK: 122.8 Tonasket W01: 122.9		6. TFR information Walker 1/7944 7NM SFC-9500FT Active: 0700-2100 Chickadee 1/7942 5NM SFC-9500FT Active: 0700-2100		7. FIXED WING		SEATS/Fireboss: Available out of Omak. Order through NEWICC. ATGS Platform: Order as needed through NEWICC.
8. PERSONNEL		Phone	9. FREQUENCIES	FM		AM
AOBD – Mike Davis		509-699-9350	A/G Walker Pri	168.1375		
AOBD (t) - Greg Reser		307-350-2202	A/G Walker Sec	169.5625		
HEBM – Eric Bader		303-704-1164	A/G Chickadee Pri	170.2625		
			TFR 1/9445 Walker		118.125	
			A/A Walker Rotor		126.3500	
			TFR 1/9449 Chickadee		118.775	
NE Washington Dispatch (NEWICC)		509-685-6900	A/A Chickadee Rotor		126.6250	
			A/G Ignitions Discreet	167.8375		
Colville UAO Ben Renfro		541-589-0452	DNR Flight Follow	151.3475 Tx(136.5)		
			Air Guard	168.6250 Tx(110.9)		

10. Helicopters	TY	MAKE/MODEL	BASE	START	AVAIL	REMARKS
N24CK (A-183) / Gelhausen	1	S-61A	OMK	0800	0830	EU / Tanked
N7CU (A-174) / Hogue	1	CH-47D	OMK	0800	0830	EU / Bucket
N58HA (A-199) / Olson	2	UH-1	OMK	0800	0830	CWN / Restricted
N12HX (A-204) / Lookingback	3	Bell 407	OMK	0800	0830	EU / HMGB +9

Mission Requests:

Air Attack: Requested through NEWICC as needed.

Lead Plane/Airtankers: Requested through NEWICC as needed.

Helicopters: Requested through Omak Helibase.

Approved By: Mike Davis AOB

INCIDENT RADIO COMMUNICATIONS PLAN (ICS 205)

Controlled Unclassified Information//Basic

1. Incident Name:	2. Date/Time Prepared:	3. Operational Period: DAY/NIGHT	
WALKER CREEK & CHICKADEE CREEK	Date: 08/29/2021 Time: 2000	Date/Time From: 08/30/2021 0600 MON	Date/Time To: 08/31/2021 0600 TUE

4. Basic Radio Channel Use:

Zone Group	Ch #	Function	Channel Name/Trunked Radio System Talkgroup	Assignment	RX Freq	RX Tone/NAC	TX Freq	TX Tone/NAC	Mode (A,D, or M)	Remarks
	1	COMMAND	CMD1	ALL RESOURCES	170.0625	114.8	162.1750	114.8	A	LINKED TO CMD2, CMD3 & CMD4
	2	COMMAND	CMD2	ALL RESOURCES	170.3125	114.8	167.8375	114.8	A	LINKED TO CMD1, CMD 3 & CMD4
	3	COMMAND	CMD3	ALL RESOURCES	170.4500	114.8	168.1000	114.8	A	LINKED TO CMD1, CMD2 & CMD4
	4	COMMAND	CMD 4	ALL RESOURCES	172.5375	114.8	163.5500	114.8	A	LINKED TO CMD1, CMD2 & CMD3
	5	COMMAND	DNR TON	ALL RESOURCES	159.3675	118.8	151.2575	156.7	A	DNR TONASKET DISPATCH
	6	TACTICAL	TAC 6	DIV A / F	168.0500	114.8	168.0500	114.8	A	NIFC TAC
	7	TACTICAL	TAC 7	DIV O / K	168.2000	114.8	168.2000	114.8	A	NIFC TAC
	8	TACTICAL	TAC 8	DIV H	168.6000	114.8	168.6000	114.8	A	NIFC TAC
	9	TACTICAL	TAC 9	DIV T	166.7250	114.8	166.7250	114.8	A	NIFC TAC
	10	TACTICAL	TAC 10	DIV C/NIGHT	166.7750	114.8	166.7750	114.8	A	NIFC TAC
	11	TACTICAL	TAC 11	DIV Q	168.2500	114.8	168.2500	114.8	A	NIFC TAC
	12	TACTICAL	RED NET	ALL RESOURCES	153.8300		153.8300	156.7	A	EMS AMBU/AIR UNITS
	13	AIR TO GROUND	A/G CHICK	A/G CHICKADEE	170.2625		170.2625		A	NIFC A/G
	14	AIR TO GROUND	A/G SECONDARY	A/G SECONDARY	169.5625		169.5625		A	NIFC A/G
	15	AIR TO GROUND	A/G WALKER	A/G WALKER	168.1375		168.1375		A	NIFC A/G
	16	AIR GUARD	AIRGUARD	ALL RESOURCES	168.6250		168.6250	110.9	A	EMERGENCY USE ONLY

5. Special Instructions: There will be a Clone today!! CLONE Label: WALKER082821. ON THE ZONE LABEL OF KNG/BKR RADIO; FOR DPH PRESS AND HOLD THE # KEY AND LOOK AT DISPLAY.

6. Prepared By (Communications Unit Leader)	Name: MISSY PARKER	Signature: <i>Missy Parker</i>
ICS 205	IAP Page	Date/Time: 08/29/2021 2000

Controlled Unclassified Information//Basic



NW Team 12 cares about the health and safety of all of our firefighting resources. We understand that many of you will go from this assignment home to your families or on to other assignments. We appreciate the effort you all have put into maintaining the COVID mitigation standards while here on the incident. This will help prevent viral spread in camp and on the line. To support and continue this prevention, NW Team 12 is providing COVID-19 PCR testing for all resources assigned to the Walker Creek/Chickadee Fires. These tests will be provided at designated stations near camps and spike locations for the convenience of firefighting resources free of charge.

Forms to sign up for the PCR testing at your location will be distributed ahead of testing date. In the event of a positive test, there are plans in place to keep firefighters working while safely isolated from others if they have mild or no symptoms. We encourage everyone assigned to the fire to sign up for testing so you can travel home or on to your next assignment without worry of spreading the virus. We thank you for your service on these and other fires and wish you continued good health and productivity this fire season.

We will start offering testing Monday in a scheduled format. Branch 2 will be the first location that will have testing available to you. Tuesday Branch 3 will have testing available followed by Branch 1 on Wednesday. You will need to fill out the paperwork one day prior to testing this will streamline the process. Support personnel in the Tonasket camp will also be scheduled.

We are doing our best to minimize risk and exposure to you and your families as well as the firefighters. Please consider being tested to protect your self's and others. NW IMT 12 will be testing also.

Thank you for all you are doing.

Jeff Dimke

Incident Commander NW IMT 12



Okanogan County Public Health

<http://www.okanogancounty.org/ocph>

1234 South 2nd Avenue
P.O. Box 231
Okanogan, WA 98840
(509) 422-7140
TDD (800) 833-6388

August 28, 2021

Due to the current outbreak of COVID-19 within the Walker Creek/Chickadee Fire camp and in joint efforts to stop the spread of the virus, OCPH advises all fire personnel and contractors receive covid-19 PCR testing before leaving the incident.

Lifeline will provide testing. Please let me know if you have any questions.

Thank you for your cooperation,

Lauri Jones, MN

ljones@co.okanogan.wa.us

509-422-7158

PUBLIC HEALTH
ALWAYS WORKING FOR A SAFER AND
HEALTHIER WASHINGTON

WALKER CREEK FIRE DEMOB LIST

Monday August 30, 2021

DEMOB INSTRUCTIONS

Paperless and electronic demobilization will be used to the extent possible for all resources. **PLEASE LOOK closely at the Fire Name and Resource Number.** All finance documents will be emailed and signed virtually. Ensure all Final CTR's and Shift Tickets have been submitted to Finance the night before your demob day. Please be **PATIENT** as the phone lines are limited the and it takes a little longer for the virtual process.

DEMOB STEPS

(Must Be Done In Order)

1. If you have any items checked out by Supply and Communications, proceed to those areas to turn in equipment. If you don't have any items checked out, proceed to NEXT STEP.
2. If you were inspected upon arrival or need a No Claims/No Comp receipt, check out with Ground Support. If this does not apply, proceed to NEXT STEP.
3. Call Finance at 509-423-6011 or 509-433-1115 or 509-531-7418 to finalize paperwork.
4. Call DMOB at 206-473-1425 or 509-432-6143 to complete the process to be released.

***** CHICKADEE CREEK *****

EQUIPMENT

E-26c	0600	DOZ3	DOUBLE A LOGGING
E-7c	0615	FEL1	DOUBLE A LOGGING
E-8c	0630	FEL1	SILVER NICKEL LOGGING
E-24c	0645	EXCA	DOUBLE A LOGGING

***** WALKER CREEK *****

CREWS

C-67	0600	HC2I	SERVICE #12
------	------	------	-------------

EQUIPMENT

E-5	0600	ENG3	ARCHER MOUNTAIN
E-22	0615	WTS2	RAINS CONTRACTING
E-42	0630	WTS2	EVAN FINK
E-182	0645	FEL1	BOB MCDANIEL LOGGING

OVERHEAD

O-418.26	0700	MEDL	BRAUN, DIANA
O-345	0800	COMT	DODSON, RICHARD
O-312	0800	COMT	SAPP, TIMOTHY
O-440	0900	COML	HALL, MARK
O-316	1200	SOF2	KIEFER, DEAN
O-232	1600	ABRO	MARTINS, CHERYL

THERE WILL BE NO ADDITIONAL CREW SWAPS MOVING FORWARD AS THE EQUIPMENT WILL JUST TIME OUT WITH CURRENT OPERATOR. EXTENSIONS WILL BE ALLOWED WITH THE APPROVAL OF OPERATIONS.



Northwest Incident Management Team 12
COVID Mitigation Module
Jeff Dimke, Incident Commander

We thank you for your service on the Walker Creek and Chickadee Fires. According to the recommendation of Okanogan County Public Health, we have made COVID-19 PCR testing available to all resources assigned to these fires. We strongly encourage all personnel to utilize this testing resource before departing the fire to ensure the safety of your families, community, and co-workers. NW Team 12 also asks that you follow the guidelines provided as you travel home or to your next assignment to ensure your swift integration back into our firefighting forces. We look forward to seeing you on the line once again. Let us know if there is any way that we can support you in this process.

Sincerely,

Jeff Dimke, Incident Commander
NW Team 12

Liv Stecker, Health Liaison
NW Team 12
livia_stecker@firenet.gov

Lauri Jones
Okanogan County Public Health
ljones@co.okanogan.wa.us

COVID-19 DEMOB MESSAGE

Our concern for your health and safety doesn't stop when you leave the incident. In addition to driving safely, it's important to continue monitoring your health. The amount of energy you spent while fighting this fire will limit your body's ability to fight off an infection. A process is in place to provide appropriate care for fire personnel who have been determined to have been exposed to, developed symptoms of, or have a confirmed diagnosis of COVID-19. This process includes evaluation, testing as appropriate, quarantine and/or isolation, including working isolation for cases with mild or no symptoms, and patient care as deemed necessary following CDC guidelines and guidance from the local health jurisdiction. The responsible agencies and NW Team 12 have offered COVID-19 PCR testing to all resources assigned to the Walker Creek and Chickadee Fires. We strongly encourage everyone assigned to these incidents to avail themselves of this testing before departing the fire. If you choose not to be tested, it is imperative that you remain vigilant in monitoring for symptoms moving forward.

As you travel to your next destination, please:

- Limit the number of stops between the fire and your destination. If you do stop, remember to wear a face covering to avoid exposure. Please document any location where you stopped for contact tracing purposes;
- If there are two or more people in the vehicle, please remember to wear a face covering to create social distancing and limit exposure to someone who may be sick;
- Continue to monitor yourself and your co-workers for signs and symptoms of COVID-19. These include:
 - o Sudden shortness of breath or trouble breathing;
 - o Muscle pain that goes beyond what you would normally feel after fighting a fire;
 - o New and sudden loss of taste or smell;
 - o Unusual fatigue;
 - o Fever or chills;
 - o Headache that is different than what is normal after firefighting; or
 - o Nausea, vomiting or diarrhea

If you experience any of these symptoms, please proceed to your home destination avoiding any further stops. After arriving home, immediately contact your doctor, an urgent care clinic, or your local health department to receive further instructions for care and testing. You should avoid contact with others until you receive further instruction.

Continue to practice frequent hand hygiene, washing frequently with soap and warm water for at least 20 seconds and using hand sanitizer frequently. Avoid touching your face, eyes, and mouth with your hands. Remember to thoroughly wipe down your vehicle with appropriate disinfectant upon arriving at your destination. Upon arriving at your destination, please contact your individual agency to determine if they have separate infection and exposure control procedures when returning from an assignment and follow their guidance. We wish you a safe and healthy trip home or to your next destination.

Walker Creek/Chickadee Fires COVID-19 PCR Testing Schedule:

ALL TESTING WILL BE PERFORMED BY LIFELINE AMBULANCE, LOOK FOR VEHICLES AT LOCATIONS BELOW

Testing for Branch II resources **08/30/21** will take place **at DP 372** approx. 0700-0900 AM*

Testing for camp and night shift resources **08/30/21** will take place **at Tonasket Camp** approx. 0900-1000*

Testing for air resources **08/30/21** will take place **at Omak Helibase** approx. 1000-1100 AM*

Testing for Branch I resources **08/31/21** will take place **at DP 354** approx. 0700-0900*

Testing for Chickadee resources **09/01/21** will take place **at Spears Ranch** approx. 0700-0900*

Note* testing of all resources should take less than one hour at each location, please be at the appropriate location at the time listed for testing to expedite testing.

Walker Creek/Chickadee Fires COVID-19 PCR Testing Frequently Asked Questions:

Who should be tested for PCR COVID-19?

- Based on the number of positive COVID-19 cases on the Walker Creek/Chickadee Fires, Okanogan County Public Health has advised ALL firefighters assigned to the fires to be tested.

What happens if I test positive?

- If you test positive for COVID-19 but have mild or no symptoms, NW Team 12 has a plan in place to keep firefighters working while safely isolated from other crews. A positive test does not automatically mean you will be isolated and unable to work.
- If you test positive and your symptoms are more severe, NW Team 12 will work with Okanogan County Public Health to find the best solution for your isolation and recovery in coordination with your home unit.

What happens if I choose not to be tested?

- Firefighters who are not tested and have NO COVID-19 symptoms will be allowed to keep working, but will be isolated from other crews to prevent further spread from unidentified cases.
- Firefighters who choose not to be tested but ARE displaying COVID-19 like symptoms will be required to isolate according to Okanogan County Public Health recommendations and will not be allowed to continue working.

When and how will I get my test results?

- With the current backlog of tests at area labs, your test results will not be available for 24-48 hours, or in some cases longer. There will be no change to your work status while we await results. You will be able to access your results online as soon as they are available. Details will be provided to you when you are tested.



Human Resource Message



In memory of one of our own, please see the following regarding Lieutenant Cody Traber, Spokane County Fire District 9. Cody died in the line of duty responding to a brush fire, August 26, 2021, leaving behind his wife and four children.

Spokane County Fire District 9's Benevolent Association set up an account for Cody with the proceeds going directly to Cody's wife and children. The link to that site is:

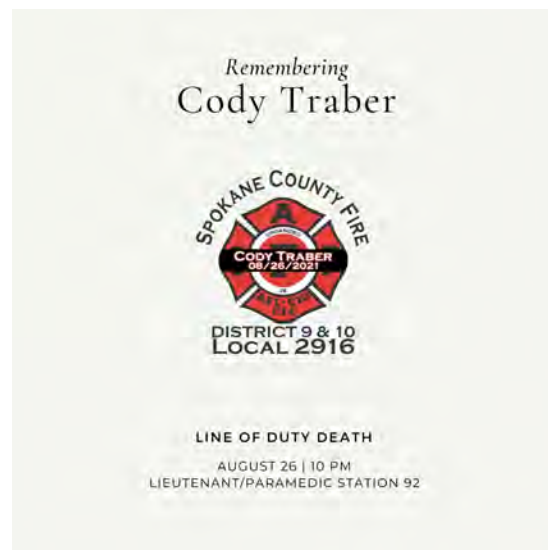
<https://bit.ly/codytraber>

For those who prefer to donate directly, please make checks payable to the Local 2916 Benevolent Association and include Cody Traber in the memo line. Checks may also be dropped off at any Fire 9 fire station or mailed to:

Local 2916
PO Box 18336
Spokane, WA 99208

To our friend and colleague, we pause today for a moment of silence in your honor.

Rest in peace Cody.



Quote for the day: "Grief takes time; there are no shortcuts. You can only hope for understanding friends who listen without judging or offering solutions." – Robert Farrar Capon

Susie Manezes, Human Resource Specialist -NW Team 12
Contact Number: 602-571-9327. smanezes@blm.gov



Logistics Message

Omak Base Camp

Kitchen Hours

0600 to 0900 Breakfast

1800 to 2100 Dinner

Supply/Cache Hours

0530-2130

Shower Hours

0430-1300 Open

1400-2300 Open

Ground Support

0500-2200



Walker Creek and Chickadee Creek Fire

Finance Message

2021.walkercreek.finance@firenet.gov

2021.chickadeecreek.finance@firenet.gov

(509)949-3210 FSC2 Cheri

(509) 423-6011 FSC2 (T) Christina

Make sure that your CTR and ST have the correct fire that you are working on.
Please make sure to call the appropriate person for assistance.

For all agency, casual
hire & Co-Ops
Call Carol at
(509) 433-1115

For all Contract
Resources (VIPR) or
DNR Hire at Fire
Call Todd at
(509) 939-9262
DNR Call Mark
(509)531-7418

*VIPR Contracts
questions or Problems
Call Rob
(509) 675-5821*

**Note to Contractors with
transports**

For all heavy equipment with a
transport, two operators
must be shown on the shift ticket
for the transport to receive full pay.

Finance is all virtual. We will be happy to take all your paperwork, CTRs and Shift tickets all by email or text.

***Please be patient with us as we process your time for demob. Our finance section is working as quickly as possible to process your time.

Incident Maps

How to Download Maps in Avenza

If you're cell signal is poor you may need to connect to a wifi to download maps. However sometimes being connected to a wifi can slow map downloads. You'll just have to find out what works best.

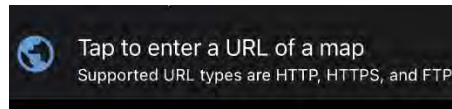
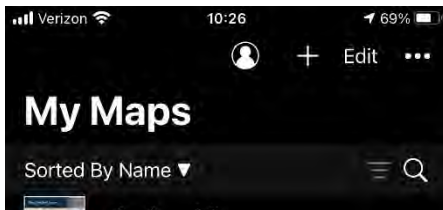
Method 1: From a browser - If you have a good cell or wifi signal

1. Tap on the desired map link and wait for the preview. *If it fails to load, use method 2 instead*
2. Tap the 'send to' icon (square with up arrow)
3. Choose the Avenza app



Method 2: From Avenza direct – if you don't have a good cell or wifi signal

1. Tap and hold on the desired map link, then choose 'copy' to copy the direct URL to the map
2. Launch the Avenza app
3. When not in any map... Tap the + (plus) icon at the top of the screen
4. Choose the load from URL option (last choice)
5. Paste the direct URL to the map
6. Tap 'Done' ; the map will begin downloading



How to Send Map Updates to the Situation Unit

1. From within the map in Avenza, click the pin with three lines near the lower-right corner.
2. *iPhone:* In the lower right, click the square with up arrow. From the pop-up menu, choose Export to Others.
Android: In the lower right, click the circle with three lines. Click the pop-up circle with up arrow.
3. Set these options:
 - a. Filename – leave alone
 - b. Export Format – choose SHP, GPX or KML
 - c. Data – all features
 - d. Image size – no image
4. Click the Export button in the upper-right corner.
5. When the export is ready, choose your Mail application.
6. Email the update to 2021.walkercreek.situation@firenet.gov for the Walker Creek Fire map updates or 2021.chickadeecreek.situation@firenet.gov for the Chickadee Fire map updates.
7. If you have questions, call or text the Situation Unit at 360-584-3373.
8. Your email needs to include an explanation of the data and a contact phone number.

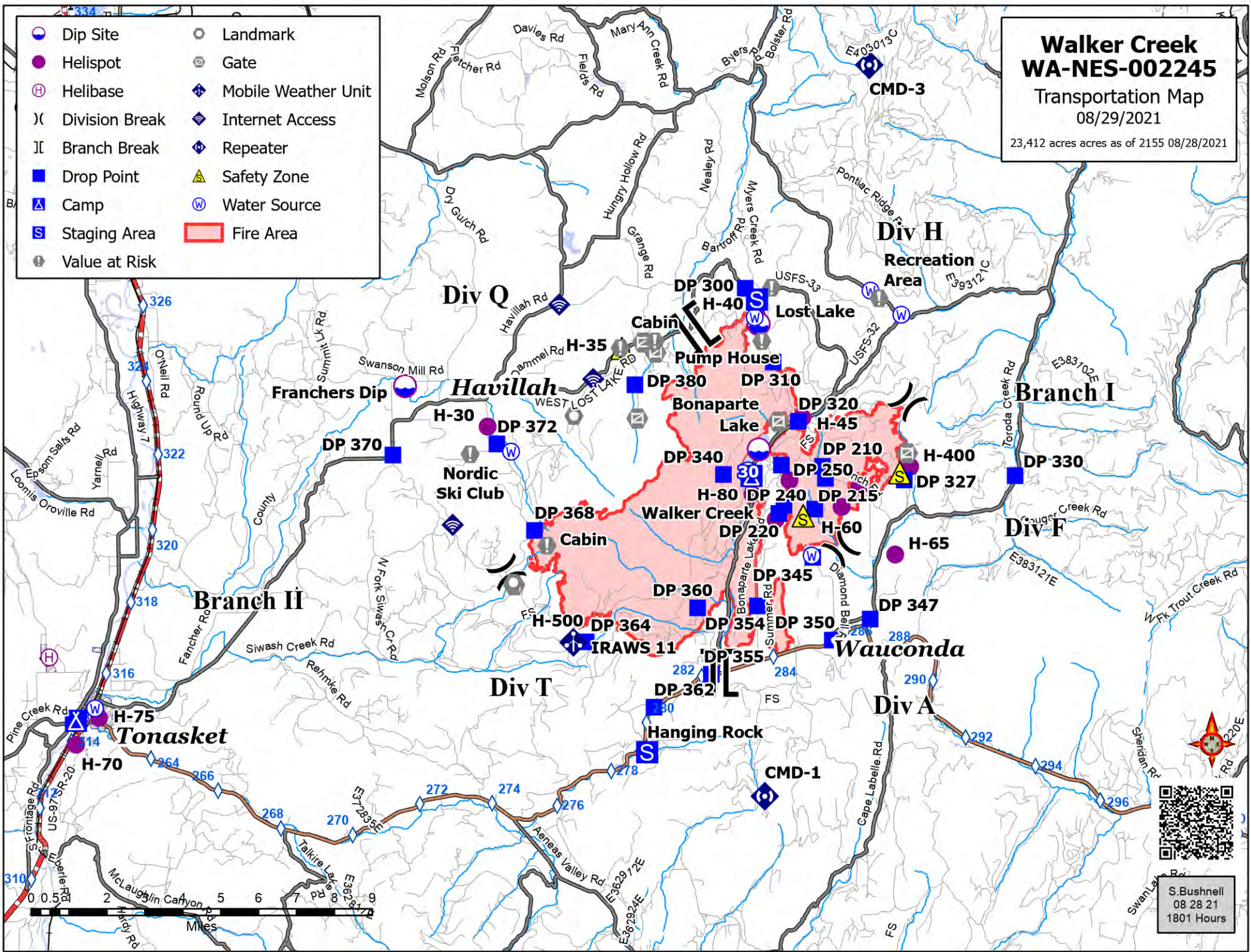
If all else fails draw your map update on your paper map, take a picture and it attach that to an email to the above addresses.

Walker Creek WA-NES-002245

Transportation Map
08/29/2021

23,412 acres as of 2155 08/28/2021

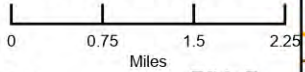
- | | | | |
|--|----------------|--|---------------------|
| | Dip Site | | Landmark |
| | Helispot | | Gate |
| | Helibase | | Mobile Weather Unit |
| | Division Break | | Internet Access |
| | Branch Break | | Repeater |
| | Drop Point | | Safety Zone |
| | Camp | | Water Source |
| | Staging Area | | Fire Area |
| | Value at Risk | | |



S. Bushnell
08 28 21
1801 Hours

Transportation
Chickadee Creek
 WA-NES-002310
 8/29/2021

5,493 as of 2323 8/28/2021 via IR



- Dip Site
- Hellspot
- Sling Site
- Division Break
- Drop Point
- Staging Area
- Lookout
- Hot Spot - Spot Fire
- Other
- Structure Wrap
- Repair Point
- Fence - Cut/Damaged
- Dozer Push
- Internet Access
- Water Source
- Incident Command Post
- Wildfire Daily Fire Perimeter
- Primary Highway
- Secondary Highway
- Light-Duty Road
- Unimproved Road
- Road Closed

Div K

Div O

Branch III

Div C

Spear Ranch Staging

Loomis

H-13

DP 140

DP 145

H-10

DP 150

H-20

DP 120

DP 115

DP 110

DP 133

DP 135

DP 160

DP 272

DP 291

DP 180

DP 170

Forde Lake

Forde Lake

Conner Lake

Conner Lake

H-166

Blue Lake

39

WALKER CREEK/CHICKADEE FIRE COVID-19 MITIGATIONS

Supervisors are required to go over this list each morning with assigned resources- report any symptoms to medical unit.

In the last 24 hours have you experienced:

- Cough more than expected?
- Shortness of breath or difficulty breathing?
- Fever? Chills?
- Muscle pain, outside your normal for firefighting?
- Sore throat?
- New loss of taste or smell?
- Fatigue, outside your normal for firefighting?
- Headache, outside your normal for firefighting?
- Congestion or runny nose, outside your normal for firefighting?
- Nausea or vomiting
- Diarrhea

** Take temperature with no-touch thermometer, if available **

- **All personnel are required to wear a mask at all times, whether indoors or outdoors, unless working alone or actively engaged in firefighting on the fireline.**
- **Use radio or Zoom link provided to join briefings remotely.**
- **Observe 6ft Distancing at all times.**
- **Send crew representatives to pick up meals - masks must be worn in food lines.**
- **Wash hands frequently and disinfect high-traffic areas on a regular basis.**
- **Limit close contact between firefighters and the public to prevent exposure and spread. WEAR A MASK AT ALL TIMES WHILE IN PUBLIC PLACES.**



EMERGENCY PLAN INCIDENT WITHIN AN INCIDENT

ON SCENE INCIDENT COMMANDER

In the event of an accident or medical incident of any size, your primary responsibility is to ENSURE that the victim(s) receive prompt and effective Triage, Treatment, Extrication and Transport.

- **ENSURE THE MEDICAL INCIDENT REPORT IN THE INCIDENT ACTION PLAN IS BEING USED AND FOLLOWED- *IF DETERMINED TO BE A GREEN, DO NOT DECLARE EMERGENCY TRAFFIC AND ONLY COMPLETE LINE 1-4 ON MIR*.**
- Conduct size-up of the incident nature of accident, number type of resources involved, latitude and longitude location (DD°MMM.MM format): notify incident communications center and supervisor, request assistance as needed.
- Order and coordinate medical and support response to the accident.
- Evaluate special needs (law enforcement, haz mat, etc.).
- Clear the command frequency if medical emergency, coordinate with incident communications and air attack for air medical transportation needs.
- Preserve and photograph the scene for accident investigation.
- Remain aware of surroundings and the status of the main incident (delegate personnel to monitor the main fire) to ensure safety of medical treatment personnel.
- Until relieved, supervise and manage all personnel involved at the incident scene.

MEDICAL PLAN (ICS 206 WF)

20 Incident/Project Name				1. Operational Period			
Walker Creek Fire				August 30-31, 2021 0600-0600			
2. Ambulance Services							
Name	Complete Address	Phone	Advanced Life Support (ALS) Yes No				
Lifeline Ambulance	912 Koala Ave Omak, WA 98841	911 - Dispatch 509-663-8091	X				
3. Air Ambulance Services							
Name	Phone	Type of Aircraft & Capability					
Life Flight Network	800-232-0911	Bell 407 - Brewster					
Airlift Northwest	800-426-2430 or 911	Rotor in Wenatchee					
4. Hospitals							
Name Complete Address	Coordinate Standard Degrees Decimal Minutes DD° MM.MMM' N - Lat DD° MM.MMM' W - Long	Travel Time From Bonaparte		Phone	Helipad Yes No	Level of Care Facility	
North Valley Hospital 203 S Western Ave Tonasket, WA 98855	Lat: 48°42.4549' N	13 min	38 min	509-486-2151		X	Level 4 Trauma
	Long: 119°26.3267' W						
Mid-Valley Hospital 912 Koala Ave Omak, WA 98841	Lat: 48°23.8336' N	24 Min	59 min	509-826-1760	X		Level 4 Trauma
	Long: 119°32.8758' W						
Confluence Health Hospital (Central Washington Hospital) 1201 S Miller St. Wenatchee, WA 98801	Lat: 47°24.4340' N	1 Hr 12 min	2 Hr 48 min	509-662-1511	X		Level 2 Trauma
	Long: 120°19.3664' W						
Harborview Medical 325 9 th Ave Seattle, WA 98104	Lat: 47°36.1897' N	2 Hr 22 min	5 Hr	541-222-6929	X		Level 1 Trauma Burn Center
	Long: 122°19.4759' W						
5. Division Branch Group	Capability		Personnel				
Div A/F	Johnsen EMTF		Stevens Sheriff Ambulance (Ambo 1) Brittan			Byrd EMPF	
Div H	Sewell EMPF						
Div Q	Bridges EMPF						
Div T	Marin EMPF						
Night Shift	Use Available Resources						
6. Prepared By (Medical Unit Leader)			7. Date/Time		8. Reviewed By (Safety Officer)		9. Date/Time
Lee Venning (T), Eamonn Ryan <i>Lee Venning</i>			08/29/2021 1800		Troy Corn <i>Troy Corn</i>		08/29/2021 1800

MEDICAL PLAN (ICS 206 WF)

20 Incident/Project Name		1. Operational Period				
Chickadee Creek Fire		August 30-31, 2021 0600-0600				
2. Ambulance Services						
Name	Complete Address	Phone	Advanced Life Support (ALS) Yes No			
Lifeline Ambulance	912 Koala Ave Omak, WA 98841	911 - Dispatch 509-663-8091	x			
3. Air Ambulance Services						
Name	Phone	Type of Aircraft & Capability				
Life Flight Network	800-232-0911	Bell 407 - Brewster				
Airlift Northwest	800-426-2430 or 911	Rotor in Wenatchee				
4. Hospitals						
Name Complete Address	Coordinate Standard Degrees Decimal Minutes DD° MM.MMM' N - Lat DD° MM.MMM' W - Long	Travel Time From Loomis		Phone	Helipad Yes No	Level of Care Facility
North Valley Hospital 203 S Western Ave Tonasket, WA 98855	Lat: 48°42.4549' N	8 min	22 min	509-486-2151	X	Level 4 Trauma
	Long: 119°26.3267' W					
Mid-Valley Hospital 912 Koala Ave Omak, WA 98841	Lat: 48°23.8336' N	20 Min	46 min	509-826-1760	X	Level 4 Trauma
	Long: 119°32.8758' W					
Confluence Health Hospital (Central Washington Hospital) 1201 S Miller St. Wenatchee, WA 98801	Lat: 47°24.4340' N	68 min	2 Hr 35 min	509-662-1511	X	Level 2 Trauma
	Long: 120°19.3664' W					
Harborview Medical 325 9 th Ave Seattle, WA 98104	Lat: 47°36.1897' N	1Hr 38 min	4 Hr 50 min	541-222-6929	X	Level 1 Trauma Burn Center
	Long: 122°19.4759' W					
5. Division Branch Group	Capability	Personnel				
Div C	Landrum EMTF	Pend Oreille Ambulance (Ambo 2) Triliegi			Smith EMPF (UTV)	
Div K/O	Satcher EMTF	Kyle Meade EMPF			Cooper EMPF	
Night Shift	Counts EMPF					
6. Prepared By (Medical Unit Leader)		7. Date/Time		8. Reviewed By (Safety Officer)		9. Date/Time
Lee Venning (T), Eamonn Ryan <i>Lee Venning</i>		08/29/2021 1800		Troy Corn <i>Troy Corn</i>		08/29/2021 1800

MEDICAL PLAN (ICS 206 WF)

Controlled Unclassified Information//Basic

Medical Incident Report

FOR A NON-EMERGENCY INCIDENT, WORK THROUGH CHAIN OF COMMAND TO REPORT AND TRANSPORT INJURED PERSONNEL AS NECESSARY.

FOR A MEDICAL EMERGENCY: IDENTIFY ON SCENE INCIDENT COMMANDER BY NAME AND POSITION AND ANNOUNCE "MEDICAL EMERGENCY" TO INITIATE RESPONSE FROM IMT COMMUNICATIONS/DISPATCH.

Use the following items to communicate situation to communications/dispatch.

1. CONTACT COMMUNICATIONS / DISPATCH (**Verify correct frequency prior to starting report**)

Ex: "Communications, Div. Alpha. Stand-by for Emergency Traffic."

2. INCIDENT STATUS: *Provide incident summary (including number of patients) and command structure.*

Ex: "Communications, I have a Red priority patient, unconscious, struck by a falling tree. Requesting air ambulance to Forest Road 1 at (Lat./Long.) This will be the Trout Meadow Medical, IC is TFLD Jones. EMT Smith is providing medical care."

Severity of Emergency / Transport Priority	<input type="checkbox"/> RED / PRIORITY 1 Life or limb threatening injury or illness. Evacuation need is IMMEDIATE <i>Ex: Unconscious, difficulty breathing, bleeding severely, 2° – 3° burns more than 4 palm sizes, heat stroke, disoriented.</i> <input type="checkbox"/> YELLOW / PRIORITY 2 Serious Injury or illness. Evacuation may be DELAYED if necessary. <i>Ex: Significant trauma, unable to walk, 2° – 3° burns not more than 1-3 palm sizes.</i> <input type="checkbox"/> GREEN / PRIORITY 3 Minor Injury or illness. Non-Emergency transport <i>Ex: Sprains, strains, minor heat-related illness.</i>	
Nature of Injury or Illness & Mechanism of Injury		<i>Brief Summary of Injury or Illness (Ex: Unconscious, Struck by Falling Tree)</i>
Transport Request		<i>Air Ambulance / Short Haul/Hoist Ground Ambulance / Other</i>
Patient Location		<i>Descriptive Location & Lat. / Long. (WGS84)</i>
Incident Name		<i>Geographic Name + "Medical" (Ex: Trout Meadow Medical)</i>
On-Scene Incident Commander		<i>Name of on-scene IC of Incident within an Incident (Ex: TFLD Jones)</i>
Patient Care		<i>Name of Care Provider (Ex: EMT Smith)</i>

3. INITIAL PATIENT ASSESSMENT: *Complete this section for each patient as applicable (start with the most severe patient)*

Patient Assessment: See IRPG page 106

Treatment:

4. TRANSPORT PLAN:

Evacuation Location (if different): *(Descriptive Location (drop point, intersection, etc.) or Lat. / Long.)* Patient's ETA to Evacuation Location:

Helispot / Extraction Site Size and Hazards:

5. ADDITIONAL RESOURCES / EQUIPMENT NEEDS:

Example: Paramedic/EMT, Crews, Immobilization Devices, AED, Oxygen, Trauma Bag, IV/Fluid(s), Splints, Rope rescue, Wheeled litter, HAZMAT, Extrication

6. COMMUNICATIONS: Identify State Air/Ground EMS Frequencies and Hospital Contacts as applicable

Function	Channel Name/Number	Receive (RX)	Tone/NAC *	Transmit (TX)	Tone/NAC *
COMMAND					
AIR-TO-GRND					
TACTICAL					

7. CONTINGENCY: **Considerations:** *If primary options fail, what actions can be implemented in conjunction with primary evacuation method? Be thinking ahead.*

8. ADDITIONAL INFORMATION: *Updates/Changes, etc.*

REMEMBER: Confirm ETA's of resources ordered. Act according to your level of training. Be Alert. Keep Calm. Think Clearly. Act Decisively.

Controlled Unclassified Information//Basic