

INCIDENT ACTION PLAN

Walker Creek / Chickadee Creek



September 1-2, 2021
Dayshift 0600-1800
Nightshift 1800-0600



QR Code for:
Virtual Check-in
Time
Maps
IAP
COVID19 Self Test



BRIEFING Phone
(audio only)
[+1 929-336-2435](tel:+19293362435), [452803978](tel:452803978)#
Phone Conference
ID: 452 803 978#

Chickadee Creek Fire
WA-NES-002310
PNN7WA (1522)
221-JFZ

Walker Creek Fire
WA-NES-002245
PNN7RL (1522)
WA state code: 221KPI

This page intentionally left blank.



INCIDENT OBJECTIVES (ICS 202)

1. Incident Name:	2. Operational Period: DAY/NIGHT	
WALKER CREEK & CHICKADEE CREEK	Date/Time From: 09/01/2021 0600 WED	Date/Time To: 09/02/2021 0600 THU
3. Objective(s):		
<p>-Protection of human life and safety is the first priority for all actions, and can overrule all other strategic and incident objectives and management and incident requirements.</p> <p>-Base management decisions on meeting objectives while also minimizing the risk of COVID-19 exposure to responders and the public. COVID-19 considerations may alter how goals are met goals but should not lead to higher-risk tactics.</p> <p>-Secure fire, construct line, patrol and mop up as directed by operations to eliminate the risk of loss of containment when hazards have been mitigated to an acceptable risk level. This may require burning in areas of the fires depending on the weather and conditions to meet suppression objectives.</p> <p>-Monitor fire activity and, protect as needed, the WUI infrastructure, timber values, recreation areas, FS campgrounds, and facilities.</p> <p>-Implement and coordinate suppression and suppression repair actions to minimize impacts to the resource area, local roadless areas, and other points of high value by ensuring standards are followed. Mitigate damage caused by suppression activities, as resources and time allow. Suppression is still the primary objective. Release resources being used for suppression repair that are a critical need to the national firefighting effort unless they are directly tied to life, safety, or additional damage.</p>		
4. Operational Period Command Emphasis:		
Secure and mop-up direct control lines. Improve indirect control lines, make preparations for firing operations and implement where needed.		
General Situational Awareness:		
Maintain situational awareness, identify hazards and develop mitigations for them.		
5. Site Safety Plan Required? Yes <input type="checkbox"/> No <input checked="" type="checkbox"/>		
Approved Site Safety Plan(s) Located		
6. Incident Action Plan (the items checked below are included in this Incident Action Plan):		
<input checked="" type="checkbox"/> ICS 202 <input checked="" type="checkbox"/> ICS 203 <input checked="" type="checkbox"/> ICS 204 <input checked="" type="checkbox"/> ICS 205 <input type="checkbox"/> ICS 205A <input checked="" type="checkbox"/> ICS 206	<input type="checkbox"/> ICS 207 <input type="checkbox"/> ICS 208 <input checked="" type="checkbox"/> ICS 220 <input checked="" type="checkbox"/> Map/Chart <input checked="" type="checkbox"/> Weather Forecast/Tides/Currents	Other Attachments: <input checked="" type="checkbox"/> HR MESSAGE <input checked="" type="checkbox"/> COVID SCREENING <input type="checkbox"/> _____ <input type="checkbox"/> _____
7. Prepared by: MARGE HUTCHINSON Position/Title: PSC2	Signature: <i>Marge Hutchinson</i>	
8. Approved by Incident Commander:	Name: JEFF DIMKE	Signature: <i>Jeff Dimke</i>
ICS 202	IAP Page	Date/Time: 08/31/2021 2000

ORGANIZATION ASSIGNMENT LIST (ICS 203)

1. Incident Name:		2. Operational Period: DAY/NIGHT	
WALKER CREEK & CHICKADEE CREEK		Date/Time From: 09/01/2021 0600 WED	Date/Time To: 09/02/2021 0600 THU
3. Incident Commander(s) and Command Staff:		FOOD UNIT	RUSS HOVEY
IC/UC	JEFF DIMKE	SECURITY UNIT	
DEPUTY	BOBBY SHINDELAR (VIRTUAL)	7. Operations Section:	
SAFETY OFFICER	TROY CORN	PLANNING OPS	AARON ROWE
	JACK CATES (VIRTUAL)	OPS SECTION CHIEF	JEROMY WILSON (T)
INFORMATION OFFICER	MARY BEAN ROLAND EMETAZ		
LIAISON OFFICER	SCOTT CRAWFORD	BRANCH DIRECTOR	JERRAN FLINDERS
HEALTH LIAISON	LIV STECKER		
HUMAN RESOURCE SPECIALIST	SUSIE MANEZES	DIVISION/GROUP	A/F CODY ACORD JASON EMHOFF
		DIVISION/GROUP	H MATT KENNEDY
DNR	KEN MCNAMEE (ADMIN) BRETT WALKER (AREP)	DIVISION/GROUP	Q MICHAEL GOOD JAMES DICKINSON (T)
		DIVISION/GROUP	T MICHAEL JACKSON SETH JONES (T)
USFS	RODNEY SMOLDEN (ADMIN) MATT MARSH (AREP)	DIVISION/GROUP	C BOB HINDS
		DIVISION/GROUP	K/O CHET DIERINGER SAM STEINSHOUER (T)
BLM	CURTIS BRYANT (ADMIN) ERICA TAECKER (AREP)	DIVISION/GROUP	NIGHT DANIEL GLEASON SUSAN GREENLEAF (T)
OKANOGAN COUNTY OES	MAURICE GOODALL		
4. Agency/Organization Representative(s):			
Agency/Organization	Name		
5. Planning Section:		7b. Air Operations Branch:	
CHIEF	MARGE HUTCHINSON	AIR OPS BRANCH DIRECTOR	MIKE DAVIS GREG RESER (T)
DEPUTY	HOWARD JOHNSON (VIRTUAL)	AIR ATTACK SUPERVISOR	
RESOURCES UNIT	JILL JOHNSON	AIR SUPPORT SUPERVISOR	
SITUATION UNIT	DAVE WISCHER (VIRTUAL)	8. Finance/Administration Section:	
DOCUMENTATION UNIT	DEIDRE SMITH (VIRTUAL))	CHIEF	CHERI FULLER CHRISTINA GOEBEL (T)
DEMOBILIZATION UNIT	MIKE HESTON (VIRTUAL) ED MORGAN	TIME UNIT	CAROL LONG
FIRE BEHAVIOR ANALYST	DON STRAND	PROCUREMENT UNIT	MARK BOHNET
GIS SPECIALIST	SHAWN BUSHNELL MIKE TONKEL (T)	COMPENSATION UNIT	CHERI FULLER
TECHNOLOGY SUPPORT SPECIALIST	GEORGE JENKINS TODD MALLERY	COST UNIT	KAY HIGH (VIRTUAL)
INCIDENT METEOROLOGIST	TOM BIRD	ICPI	ROB HECHINGER
6. Logistics Section:			
CHIEF	DAN SOPTICH		
DEPUTY	KEVIN HAUGHTON		
FACILITIES UNIT	SCOTT BEAULAURIER		
GROUND SUPPORT UNIT	DAVE HARSH		
SUPPLY UNIT	JOHN KAUPA		
COMMUNICATIONS UNIT	MISSY PARKER		
MEDICAL UNIT	EAMONN RYAN LEE VENNING (T)		
9. Prepared By:	Name: JILL JOHNSON	Position/Title: RESL	Signature:
ICS 203	IAP Page	Date/Time: 08/31/2021 2000	<i>Jill Johnson</i>

Fire Weather Forecast

FORECAST NO: 25
PREDICTION FOR: Wednesday
Shift Date: September 1, 2021

INCIDENT: Walker-Chickadee Fires
UNIT: DNR-USFS-BLM
SIGNED: *Bob Tobin*

TIME AND DATE
FORECAST ISSUED: 8/31/2021 at 2000

Incident Meteorologist (IMET)

Weather Discussion: The low pressure system that is over the Pac NW will remain over the region through Thursday morning. Temperatures will be on the cool side Wednesday and be quite chill Thursday morning. Winds will stay northerly and will be gusty at times. High pressure will build into the region Thursday afternoon but flatten quickly by Friday afternoon. This will allow several degrees of warming both Thursday and Friday. Westerly flow into the Labor Day weekend will result in variable clouds and temperatures dropping back to normal if not a degree or two below normal.

WEATHER FORECAST: Chickadee

Wednesday:

SKY/WEATHER: Partly to Mostly cloudy. A slight chance of showers.

High Temperature...57-63 above 4000 ft...72-76 below 4000 ft. 24hr chg: Up 3-5 degrees

Min RH.....35-45% above 4000 ft...25-35% below 4000 ft. 24hr chg: Down 2-4 percent.

20-FOOT WINDS: North 10-12 mph with gusts around 20 mph.

CWR (>=0.10")....0% **LAL....**1 **Haines Index...2 (Very Low)** **Mixing Height...6900 ft AGL**

Tonight:

SKY/WEATHER: Partly cloudy.

Low Temperature...42-48.

Max RH.....55-65%

20-FOOT WINDS: North 10-12 with gusts to 15 mph.

CWR (>=0.10")....0% **LAL....**1

WEATHER FORECAST: Walker

Wednesday:

SKY/WEATHER: Partly to mostly cloudy.

High Temperature...56-63 above 4000 ft...68-72 below 4000 ft. 24hr chg: Up 3-5 degrees

Min RH.....30-40% above 4000 ft...25-35% below 4000 ft. 24hr chg: Down 2-4 percent.

20-FOOT WINDS: Northwest 10-15 mph with gusts to 20 mph.

CWR (>=0.10")....0% **LAL....**1 **Haines Index...2 (Very Low)** **Mixing Height...6500 ft AGL**

Tonight:

SKY/WEATHER: Partly cloudy.

Low Temperature...40-46.

Max RH.....65-75%

20-FOOT WINDS: North 10-12 with gusts to 15 mph.

CWR (>=0.10")....0% **LAL....**1

Extended Outlook

Thursday... Mostly sunny. High: 63-73. Min RH: 25-35% Winds: North 5-10 mph with gusts to 20 mph.

Friday... Partly cloudy. High: 66-76. Min RH: 25-35% Winds: Southwest 8-10 gusts to mph.

Saturday... Mostly cloudy. A slight chance of showers overnight. High: 65-75. Min RH: 25-35% Winds: Southwest 10-15 mph with gusts 20-25 mph.

FIRE BEHAVIOR FORECAST

FORECAST NUMBER: 25	TYPE OF FIRE: Wildland
FIRE NAME: Walker Creek & Chickadee Creek	OPERATIONAL PERIOD: Sept 1, 2, 2021 0600-0600
DATE ISSUED: Aug 31, 2021	TIME ISSUED: 2000
UNIT: WA DNR, BLM, USFS	Don Strand FBAN

INPUTS

WEATHER SUMMARY: See attached fire weather forecast

OUTPUTS

FIRE BEHAVIOR

FUELS: The fires are burning mostly in mixed conifer timber litter consisting of Douglas-fir (many with dwarf mistletoe clumps), western larch, Engelmann spruce reproduction and overstory., and lodgepole pine below 6,000'. Sub-alpine fir, white bark pine, and lodgepole pine occur above 6,000'. All timber types have ladder fuels with black moss/lichens that make for an easy transition to crown fire. Dead fine fuels, grass (where not heavily grazed), and slash can increase surface fire spread. Most live fuels, except for red alder, are available to carry fire and fuel moistures will continue to drop with seasonal drying. Live fuels are still drought stressed.

GENERAL: Slightly warmer and drier with breezy northerly winds today. Expect smoldering and creeping fire behavior in available surface fuels. Potential for isolated torching where jackpots of fuel exist under ladder fuels. Pay attention to areas exposed to winds. An increase in fire intensity likely where winds can penetrate canopies.

SPECIFIC:

Chickadee: Expect continued smoldering and creeping fire behavior. Still potential for torching and short-range spotting. Roll outs on steeper slopes are another method of fire spread. Areas exposed to northerly winds have potential to see an increase in intensity.

Fuel Moistures- Aeneas LO WIMS data from yesterday were- 10-hour 11%, 100-hour 12%, 1000-hour 14%. ERC 45.

Probability of Ignition will approach 60% unshaded and 30% shaded.

Walker: Continued smoldering and creeping fire behavior. Potential for winds channeling through saddles. Islands of unburned fuels and areas of dirty burns will slowly spread with potential for torching and spotting.

Fuel Moistures- Lost Lake RAWs WIMS data from yesterday were- 10-hour 12%, 100-hour 12%, 1000-hour 14%. ERC 42.

Probability of Ignition will approach 60% unshaded and 30% shaded.

Night: Cool with moderate to good humidity recovery. Northerly winds with gust to 15 mph. Pay attentions to areas there is wind/slope alignment. Continue to watch for hold over spots from previous fire activity.

AIR OPERATIONS: Expect some turbulence in areas of complex terrain

SAFETY

Breezy condition again today.

Remember: Base all actions on current and expected fire behavior.



SAFETY MESSAGE

1-2 September 2021

INCIDENT: Walker Creek/Chickadee

OPERATIONAL PERIOD: 0600-0600

MANAGING THE MAYDAY

The four (4) W's of size up: While we fight fires of varying complexities throughout the year, we rarely (and thankfully) deal with managing the EMS incident from beginning to end. This can be a daunting and stressful task for personnel. While the Emergency Plan is a useful tool, the four (4) W's is a simple, easy and provides you with a guide to establish most of the pertinent information needed to successfully manage the IWI.

"W"hat do I have?

"W"hat am I doing?

"W"hat do I need?

"W"ho is in command?

We call this the 30 second blueprint for success. While it may not answer all the questions needed, it certainly gets you off on the right foot.

COVID MITIGATIONS

Please review your COVID/Viral Transmission prevention guidelines. Maintain your distancing to the greatest extent, cough or sneeze away from other people, mask up when indoors and respect the personal space of others. If you begin feeling ill, notify your supervisor and seek medical attention for screening.

Ensure LCES in in place before engaging and continue to evaluate during the entire shift.

SAFETY OFFICER: Troy Corn, Jack Cates

Deliberate Risk Assessment-Hazard Summary

1-2 September 2021

Hazard	Mitigation	Post Risk
Viral Transmission Mitigations, Communicable Disease	Maintain awareness of health, perform self checks, maintain social distancing, wear face coverings when indoors or when social distancing cannot be maintained. Report and isolate if feeling symptomatic. Coordinate with Okanogan County Public Health for testing, reporting and isolation as needed. Conduct testing of personnel with exposure to known positive cases.	Low
Extraction Time	Identify medivac sites and helispots. Initiate ground transport to accident site. Identify EMT/EMTP from resources assigned to division. Provide line qualified paramedics to each division as available. Review IWI protocol to ensure familiarity. Utilize civilian medivac as treatment/timing dictates. Evaluate on-going need for repositioning medical personnel.	High
Heavy Equipment	Post lookouts around equipment work areas. Establish communications with equipment boss and operator. Do not work down slope from equipment. Familiarize crews with specialty equipment and processes.	High
Hazard Trees	Use avoidance to limit exposure time. Snag ahead to avoid exposure. Use qualified fallers, blasting, or alternate methods if needed. Conduct on-going risk analysis of all work areas. Follow Hazard Tree Safety Guidelines (IRPG page 22).	High
Aircraft	Utilize Air Attack. Ensure all resources are a safe distance from all bucket and retardant drops. Establish LCES. Utilize air to ground primary radio channel. Reference IRPG (Safe aircraft operations pg. 56-58). Ensure IA resources have coordination with unassigned local air resources to provide deconfliction.	High
Steep Terrain/Gravity	Do not work crews above or below each other. Post lookouts for rolling material. Watch footing in loose soil, rock and around vegetation. Do not work below heavy equipment. Scout and identify travel routes. Establish LCES.	Moderate
Physical Factors	Maintain hydration schedule. Closely monitor work rate and implement rest periods. Maintain nutrition. Ensure adequate work/rest.	Moderate
Environmental Factors	Assign medical personnel to camp. Assess for known allergies and report to medical personnel. Obtain Bee Bopper/wasp spray and yellow jacket traps. Maintain an awareness of livestock. Keep an eye out for wildlife including bears, cougars, and rattlesnakes.	Moderate
Fire Behavior	Be aware of burn windows and weather impacts and min/max RH for flashy fuels/local conditions. Be aware of increased fire behavior and concerns specific to thunderstorm safety (IRPG p. 21). Report changes to FBAN and IMET. Include thunderstorm safety message in IAP.	Moderate
Unburned Fuels/Firing Ops	Establish LCES. Ensure management action points are implemented and followed. Weather updates as needed during burning operations. Locate indirect firelines to minimize the amount of unburned fuels. Follow Interagency Ignition Guide. Ensure communications between all firing operations. Establish road security at all firing sites. Follow approved firing plan for unburned fuels.	Moderate
Transportation	Signing of all incident roads that provide access to divisions. Daily updated travel plan maps. Practice defensive driving. In local communities obey the posted speed limits. Use reader boards to control entry as needed. Identify and evaluate contingency and alternate escape and travel routes.	Moderate
Communication	Evaluate for dead zones prior to engagement. Utilize human repeaters as needed. Ensure accountability of resources in problem areas.	Low
Public Interaction	Place new road closures as necessary and maintain current closures. Maintain awareness of evacuation areas and provide accurate information dissemination.	Low

Division/Group Assignment List (ICS 204 WF)
Controlled Unclassified Information//Basic

1. Incident Name:				3.		
WALKER CREEK & CHICKADEE CREEK				Branch: WALKER	Division/Group A/F	
2. Operational Period: DAY/NIGHT						
Date/Time From: 09/01/2021 0600		Date/Time To: 09/02/2021 0600				
WED		THU				
4. Operations Personnel						
OPERATIONS CHIEF		AARON ROWE JEROMY WILSON (T)		BRANCH DIRECTOR		JERRAN FLINDERS
SAFETY OFFICER		TROY CORN; JACK CATES		DIVISION/GROUP SUPERVISOR		JASON EMHOFF
5. Resources Assigned this Period						
Strike Team / Task Force / Resource Designator	LWD	Leader	Number Persons	Drop Off PT./Time	Pick Up PT./Time	
O-436 SOF2	09/13	TAIJA CORSO	1	DP-354/0600	DP-354/1800	
O-450 SOF2 (T)	09/02	PHIL GRAHAM	1	DP-354/0600	DP-354/1800	
O-260 TFLD	09/01	DAVID HADLEY	1	DP-354/0600	DP-354/1800	
O-350 TFLD (T)	09/06	CORY FISCHER	1	DP-354/0600	DP-354/1800	
O-477.1 TFLD (LOAN)	09/10	ROBERT COTA	1	DP-354/0600	DP-354/1800	
O-422 SMOD REPUBLIC C-201 (IA)		BRAD FREDRICKSON	10	DP-354/0600	DP-354/1800	
O-477 SMOD BOXELDER JOB CORPS (LOAN)		KEVIN ARGUETA	10	DP-354/0600	DP-354/1800	
C-82 HC2 NORTH REFORESTATION CO	09/09	JOSE RINCON	20	DP-354/0600	DP-354/1800	
E-87 ENG6 OK-OKS EC 95	09/01	CLAYTON HURST	3	DP-354/0600	DP-354/1800	
E-123 ENG4 HI COUNTRY	09/09	TYLER STEVENSON	3	DP-354/0600	DP-354/1800	
E-217 ENG6 ACCESS FIRE	09/04	KEN VIRDEN	3	DP-354/0600	DP-354/1800	
E-218 ENG4 IDAHO HEATSEEKER 19	09/04	CASEY JOHNSON	3	DP-354/0600	DP-354/1800	
E-235 ENG5 SPOKANE B51	09/02	JOSH SAMPSON	3	DP-354/0600	DP-354/1800	
E-236 ENG3 WA-SPFN 3	09/03	DENNIS STARRING	3	DP-354/0600	DP-354/1800	
E-256 ENG5 WILD FIRE SERVICES	09/07	JAMIE RODOM	3	DP-354/0600	DP-354/1800	
E-284 ENG6 REPUBLIC E622 (IA)	09/06	GABE GIDDINGS	4	DP-354/0600	DP-354/1800	
E-174 WTS2 STOTTS CONSTRUCTION	09/11	DAVID HARCOURT	1	DP-354/0600	DP-354/1800	
8. Division/Group Communication Summary						
Function	Channel	RX Frequency N/W	RX Tone/NAC	TX Frequency N/W	TX Tone/NAC	Mode
COMMAND	1	170.0625	114.8	162.1750	114.8	A
COMMAND	2	170.3125	114.8	167.8375	114.8	A
COMMAND	3	170.4500	114.8	168.1000	114.8	A
COMMAND	4	172.5375	114.8	163.5500	114.8	A
TACTICAL	6	168.0500	114.8	168.0500	114.8	A
AIR TO GROUND	15	168.1375		168.1375		A
9. Prepared By (Resource Unit Leader)			Approved By (Planning Section Chief)		Date	Time
JILL JOHNSON			MARGE HUTCHINSON		08/31/2021	2000

Division/Group Assignment List (ICS 204 WF)
Controlled Unclassified Information//Basic

1. Incident Name:			3.			
WALKER CREEK & CHICKADEE CREEK			Branch:		Division/Group	
2. Operational Period: DAY/NIGHT			WALKER		A/F	
Date/Time From: 09/01/2021 0600	WED	Date/Time To: 09/02/2021 0600				
4. Operations Personnel						
OPERATIONS CHIEF		AARON ROWE JEROMY WILSON (T)		BRANCH DIRECTOR		JERRAN FLINDERS
SAFETY OFFICER		TROY CORN; JACK CATES		DIVISION/GROUP SUPERVISOR		JASON EMHOFF
5. Resources Assigned this Period						
Strike Team / Task Force / Resource Designator		LWD	Leader	Number Persons	Drop Off PT./Time	Pick Up PT./Time
E-175 WTS3 STOTTS CONSTRUCTION		09/03	JOSEPH HUDSON	1	DP-354/0600	DP-354/1800
E-1S DOZ3 JONES LOGGING		09/11	JASON JONES	2	DP-354/0600	DP-354/1800
E-356 AMR AMBU 3 (ALS)		09/14		2	DP-354/0600	DP-354/1800
O-159 EMTF		09/10	HANS JOHNSEN	1	DP-354/0600	DP-354/1800
O-393 EMPF		09/06	ROSS BYRD	1	DP-354/0600	DP-354/1800
6. Control Operations/Work Assignments:						
<p>Task Patrol from the T/A break to the H/Q break. Mop areas that threaten structures or other values at risk; consider forecast weather, seasonality and the probability of fire actually impacting values.</p> <p>Purpose Contain fire progression within the current fire perimeter; limit threat to structures in the Bonaparte Lake area.</p> <p>End State Fire is controlled within the current fire perimeter and structures at Bonaparte Lake are no longer threatened.</p>						
7. Special Instructions:						
<p>Division breakout will be at the DP-354.</p> <p>Notify READ if cultural materials are found during mop up. Leave in place, flag and GPS. READs (D. Pearson, M. Wilson & A. Miller) will notify DIVS when entering or leaving the division.</p>						
8. Division/Group Communication Summary						
Function	Channel	RX Frequency N/W	RX Tone/NAC	TX Frequency N/W	TX Tone/NAC	Mode
COMMAND	1	170.0625	114.8	162.1750	114.8	A
COMMAND	2	170.3125	114.8	167.8375	114.8	A
COMMAND	3	170.4500	114.8	168.1000	114.8	A
COMMAND	4	172.5375	114.8	163.5500	114.8	A
TACTICAL	6	168.0500	114.8	168.0500	114.8	A
AIR TO GROUND	15	168.1375		168.1375		A
9. Prepared By (Resource Unit Leader)			Approved By (Planning Section Chief)		Date	Time
JILL JOHNSON			MARGE HUTCHINSON		08/31/2021	2000

Division/Group Assignment List (ICS 204 WF)
Controlled Unclassified Information//Basic

1. Incident Name:				3.		
WALKER CREEK & CHICKADEE CREEK				Branch: WALKER	Division/Group H	
2. Operational Period: DAY/NIGHT						
Date/Time From: 09/01/2021 0600 WED		Date/Time To: 09/02/2021 0600 THU				
4. Operations Personnel						
OPERATIONS CHIEF		AARON ROWE JEROMY WILSON (T)		BRANCH DIRECTOR		JERRAN FLINDERS
SAFETY OFFICER		TROY CORN; JACK CATES		DIVISION/GROUP SUPERVISOR		MATT KENNEDY
5. Resources Assigned this Period						
Strike Team / Task Force / Resource Designator	LWD	Leader	Number Persons	Drop Off PT./Time	Pick Up PT./Time	
O-436 SOF2	09/13	TAIJA CORSO	1	DP-354/0600	DP-354/1800	
O-450 SOF2 (T)	09/02	PHIL GRAHAM	1	DP-354/0600	DP-354/1800	
O-342 TFLD	09/05	JEFF MEADOWS	1	DP-354/0600	DP-354/1800	
O-351 HEQB (T)	09/05	JADE DRAUSE	1	DP-354/0600	DP-354/1800	
C-68 HC2 SZ FORESTRY	09/07	RICHARD FULLERTON	20	DP-354/0600	DP-354/1800	
E-6S ENG6 WORK HORSE	09/07	TYE STRATIT	2	DP-354/0600	DP-354/1800	
E-129 ENG6 TONASKET E691 (R&R BACK 9/3)	09/01	TAYLOR ORTEG	3	DP-354/0600	DP-354/1800	
E-216 ENG3 TFD-2301	09/04	MICHAEL JOHNSON	3	DP-354/0600	DP-354/1800	
E-5011 ENG6 COLORADO E681	09/09	CHAD BAKKEN	5	DP-354/0600	DP-354/1800	
E-254 WTT2 STEVENS COUNTY T9	09/05	ZACHARY WOLF	2	DP-354/0600	DP-354/1800	
E-297 WT SILVER NICKEL	09/09	CASEY SILVERTON	1	DP-354/0600	DP-354/1800	
E-223 DOZ2 SILVER-NICKEL LOGGING	09/01	DOC COMBS	2	DP-354/0600	DP-354/1800	
E-131 EXCA (MINI) TONASKET RD	09/04	DENISON/ WILLIAMS	2	DP-354/0600	DP-354/1800	
E-141 FEL1 BOB MCDANIEL	09/03	RODOLPHO RODRIQUEZ	1	DP-354/0600	DP-354/1800	
8. Division/Group Communication Summary						
Function	Channel	RX Frequency N/W	RX Tone/NAC	TX Frequency N/W	TX Tone/NAC	Mode
COMMAND	1	170.0625	114.8	162.1750	114.8	A
COMMAND	2	170.3125	114.8	167.8375	114.8	A
COMMAND	3	170.4500	114.8	168.1000	114.8	A
COMMAND	4	172.5375	114.8	163.5500	114.8	A
TACTICAL	8	168.6000	114.8	168.6000	114.8	A
AIR TO GROUND	15	168.1375		168.1375		A
9. Prepared By (Resource Unit Leader)			Approved By (Planning Section Chief)		Date	Time
JILL JOHNSON			MARGE HUTCHINSON		08/31/2021	2000

Division/Group Assignment List (ICS 204 WF)
Controlled Unclassified Information//Basic

1. Incident Name:			3.			
WALKER CREEK & CHICKADEE CREEK			Branch:		Division/Group	
2. Operational Period: DAY/NIGHT			WALKER		H	
Date/Time From: 09/01/2021 0600	WED	Date/Time To: 09/02/2021 0600				
4. Operations Personnel						
OPERATIONS CHIEF		AARON ROWE JEROMY WILSON (T)		BRANCH DIRECTOR		JERRAN FLINDERS
SAFETY OFFICER		TROY CORN; JACK CATES		DIVISION/GROUP SUPERVISOR		MATT KENNEDY
5. Resources Assigned this Period						
Strike Team / Task Force / Resource Designator	LWD	Leader	Number Persons	Drop Off PT./Time	Pick Up PT./Time	
EERA SELF LOADER		BOB MCDANIEL	2	DP-354/0600	DP-354/1800	
O-245 EMPF	09/06	RICHARD SEWELL	1	DP-354/0600	DP-354/1800	
6. Control Operations/Work Assignments:						
<p>Task Secure and mop up fire edge between A/F break and DP 320; consider predicted weather, seasonality and the likelihood of the fire actually impacting values at risk.</p> <p>Purpose Contain fire within current fire perimeter.</p> <p>End State Fire is controlled south and west of the current fire perimeter; indirect containment line is completed.</p>						
7. Special Instructions:						
<p>Division breakout will be at the park pavilion.</p> <p>Notify READ if cultural materials are found during mop up. Leave in place, flag and GPS. READs (D. Pearson, M. Wilson & A. Miller) will notify DIVS when entering or leaving the division.</p>						
8. Division/Group Communication Summary						
Function	Channel	RX Frequency N/W	RX Tone/NAC	TX Frequency N/W	TX Tone/NAC	Mode
COMMAND	1	170.0625	114.8	162.1750	114.8	A
COMMAND	2	170.3125	114.8	167.8375	114.8	A
COMMAND	3	170.4500	114.8	168.1000	114.8	A
COMMAND	4	172.5375	114.8	163.5500	114.8	A
TACTICAL	8	168.6000	114.8	168.6000	114.8	A
AIR TO GROUND	15	168.1375		168.1375		A
9. Prepared By (Resource Unit Leader)			Approved By (Planning Section Chief)		Date	Time
JILL JOHNSON			MARGE HUTCHINSON		08/31/2021	2000

Division/Group Assignment List (ICS 204 WF)
Controlled Unclassified Information//Basic

1. Incident Name:				3.		
WALKER CREEK & CHICKADEE CREEK				Branch: WALKER	Division/Group Q	
2. Operational Period: DAY/NIGHT						
Date/Time From: 09/01/2021 0600 WED		Date/Time To: 09/02/2021 0600 THU				
4. Operations Personnel						
OPERATIONS CHIEF		AARON ROWE JEROMY WILSON (T)		BRANCH DIRECTOR		JERRAN FLINDERS
SAFETY OFFICER		TROY CORN; JACK CATES		DIVISION/GROUP SUPERVISOR		MICHAEL GOOD JAMES DICKINSON (T)
5. Resources Assigned this Period						
Strike Team / Task Force / Resource Designator	LWD	Leader	Number Persons	Drop Off PT./Time	Pick Up PT./Time	
O-436 SOF2	09/13	TAIJA CORSO	1	DP-372/0600	DP-372/1800	
O-450 SOF2 (T)	09/02	PHIL GRAHAM	1	DP-372/0600	DP-372/1800	
E-120 ENG6 ARCHER MOUNTAIN ENTERPRISES	09/03	JUSTUS BARTON	3	DP-372/0600	DP-372/1800	
E-4C FEL1 WILL LOGGING & CONSTR	09/03	BRENDON LATIMER	1	DP-372/0600	DP-372/1800	
E-31C FEL1 NORTH PINE	09/11	SCOTT HUGHES	1	DP-372/0600	DP-372/1800	
E-142 FEL1 WILL LOGGING & CONSTRUCTIO	09/09	ADAM BAKER	1	DP-372/0600	DP-372/1800	
E-237 LOG PROCESSOR WILL LOGGING	09/04	JASON SUTTON	2	DP-372/0600	DP-372/1800	
E-280 LOG PROCESSOR TURLEY LOGGING	09/09	BRAINDON HUBBARD	3	DP-372/0600	DP-372/1800	
E-113 SKG2 YELLOW JACKET FIRE EQUIP	09/08	NICK BADENHOP	2	DP-372/0600	DP-372/1800	
E-139 SKG1 SOFT TRACK ATTACK	09/02	HEATHER GUTHRIE	2	DP-372/0600	DP-372/1800	
E-3C SKD1 WILL LOGGING & CONSTR	09/07	ROGER SMITH	1	DP-372/0600	DP-372/1800	
E-145 SKD1 WILL LOGGING & CONSTR	09/05	COLTEN GRONLUND	1	DP-372/0600	DP-372/1800	
E-233 SKD2 NORTH COLUMBIA ENTERPR	09/03	DALLES CRAPE	2	DP-372/0600	DP-372/1800	
E-234 SKD2 NORTH COLUMBIA ENTERPRISES	09/03	TOM LOTZE	2	DP-372/0600	DP-372/1800	
E-200 MAST BRUCE YOUNG LOGGING	09/07	MATT MCLAREN	2	DP-372/0600	DP-372/1800	
E-277 MAST SWEDBERG CONTRACTING CORP.	09/09	STEVEN MEDDOCK	2	DP-372/0600	DP-372/1800	
E-272 EXCA NORTH COLUMBIA ENTERPRISES	09/07	SCOTT BUTTERFIELD	2	DP-372/0600	DP-372/1800	
8. Division/Group Communication Summary						
Function	Channel	RX Frequency N/W	RX Tone/NAC	TX Frequency N/W	TX Tone/NAC	Mode
COMMAND	1	170.0625	114.8	162.1750	114.8	A
COMMAND	2	170.3125	114.8	167.8375	114.8	A
COMMAND	3	170.4500	114.8	168.1000	114.8	A
COMMAND	4	172.5375	114.8	163.5500	114.8	A
TACTICAL	11	168.2500	114.8	168.2500	114.8	A
AIR TO GROUND	15	168.1375		168.1375		A
9. Prepared By (Resource Unit Leader)		Approved By (Planning Section Chief)		Date	Time	
JILL JOHNSON		MARGE HUTCHINSON		08/31/2021	2000	

Division/Group Assignment List (ICS 204 WF)
Controlled Unclassified Information//Basic

1. Incident Name:				3.		
WALKER CREEK & CHICKADEE CREEK				Branch: WALKER	Division/Group Q	
2. Operational Period: DAY/NIGHT						
Date/Time From: 09/01/2021 0600 WED		Date/Time To: 09/02/2021 0600 THU				
4. Operations Personnel						
OPERATIONS CHIEF		AARON ROWE JEROMY WILSON (T)		BRANCH DIRECTOR		JERRAN FLINDERS
SAFETY OFFICER		TROY CORN; JACK CATES		DIVISION/GROUP SUPERVISOR		MICHAEL GOOD JAMES DICKINSON (T)
5. Resources Assigned this Period						
Strike Team / Task Force / Resource Designator	LWD	Leader	Number Persons	Drop Off PT./Time	Pick Up PT./Time	
E-110 UTV ADVENTURE SPORT		-- UNSTAFFED --		DP-372/0600	DP-372/1800	
O-221 EMPF	09/05	DAVE BRIDGES	1	DP-372/0600	DP-372/1800	
6. Control Operations/Work Assignments:						
<p>Task Complete indirect line utilizing road systems between H/Q and Q/T break. Limit road prep to the extent needed support future firing and holding operations; consider predicted weather, seasonality and the likelihood of future fire progression the north.</p> <p>Purpose Establish an indirect containment line to be used if fire progression continues to the north in DIVS Q.</p> <p>End State Indirect line established between H/Q and Q/T break; line is suitable for firing operation to limit potential future fire progression to the north.</p>						
7. Special Instructions:						
Division breakout will be at H30 Notify READ if cultural materials are found during mop up. Leave in place, flag and GPS. READs (D. Pearson, M. Wilson & A. Miller) will notify DIVS when entering or leaving the division.						
8. Division/Group Communication Summary						
Function	Channel	RX Frequency N/W	RX Tone/NAC	TX Frequency N/W	TX Tone/NAC	Mode
COMMAND	1	170.0625	114.8	162.1750	114.8	A
COMMAND	2	170.3125	114.8	167.8375	114.8	A
COMMAND	3	170.4500	114.8	168.1000	114.8	A
COMMAND	4	172.5375	114.8	163.5500	114.8	A
TACTICAL	11	168.2500	114.8	168.2500	114.8	A
AIR TO GROUND	15	168.1375		168.1375		A
9. Prepared By (Resource Unit Leader)			Approved By (Planning Section Chief)		Date	Time
JILL JOHNSON			MARGE HUTCHINSON		08/31/2021	2000

Division/Group Assignment List (ICS 204 WF)
Controlled Unclassified Information//Basic

1. Incident Name:				3.		
WALKER CREEK & CHICKADEE CREEK				Branch: WALKER	Division/Group T	
2. Operational Period: DAY/NIGHT						
Date/Time From: 09/01/2021 0600 WED		Date/Time To: 09/02/2021 0600 THU				
4. Operations Personnel						
OPERATIONS CHIEF		AARON ROWE JEROMY WILSON (T)		BRANCH DIRECTOR		JERRAN FLINDERS
SAFETY OFFICER		TROY CORN; JACK CATES		DIVISION/GROUP SUPERVISOR		MICHAEL JACKSON SETH JONES (T)
5. Resources Assigned this Period						
Strike Team / Task Force / Resource Designator	LWD	Leader	Number Persons	Drop Off PT./Time	Pick Up PT./Time	
O-436 SOF2	09/13	TAIJA CORSO	1	DP-372/0600	DP-372/1800	
O-450 SOF2 (T)	09/02	PHIL GRAHAM	1	DP-372/0600	DP-372/1800	
O-286 TFLD (T)	09/01	KEVIN CARLSEN	1	DP-372/0600	DP-372/1800	
O-474 TFLD	09/09	CHARLES MCGUIRE	1	DP-372/0600	DP-372/1800	
O-476 TFLD (T)	09/09	CONNOR ENGLAND	1	DP-372/0600	DP-372/1800	
O-23 FMOD BAILEY LOGGING	09/03	TAYLOR EVANS	2	DP-372/0600	DP-372/1800	
C-22 HC2 PR REFORESTATION	09/01	MARCO MENDOZA	20	DP-372/0600	DP-372/1800	
E-212 ENG4 FIRE WORKS	09/01	LAWRENCE GROVER	3	DP-372/0600	DP-372/1800	
E-219 ENG3 HEK JONES **	09/02	BRINN JONES	3	DP-372/0600	DP-372/1800	
E-220 ENG4 OWSLEY CANYON ENG CO	09/01	DANNY CALLAHAN	3	DP-372/0600	DP-372/1800	
E-261 ENG5 LATE SUMMERS WF **	09/07	JOSH CROLLARD	3	DP-372/0600	DP-372/1800	
E-338 ENG6 AEGIS LOGISTICS	09/11	ROY VARNEY	3	DP-372/0600	DP-372/1800	
E-339 ENG6 BLACK PINE CONTRACTING	09/12	JOE BEATTY	3	DP-372/0600	DP-372/1800	
E-340 ENG6 STCN 11 - B11-14	09/12	ZAK BEER	3	DP-372/0600	DP-372/1800	
E-23 WTS1 OROVILLE TRANSIT MIX	08/30	CHRIS WOOLEY	3	DP-372/0600	DP-372/1800	
8. Division/Group Communication Summary						
Function	Channel	RX Frequency N/W	RX Tone/NAC	TX Frequency N/W	TX Tone/NAC	Mode
COMMAND	1	170.0625	114.8	162.1750	114.8	A
COMMAND	2	170.3125	114.8	167.8375	114.8	A
COMMAND	3	170.4500	114.8	168.1000	114.8	A
COMMAND	4	172.5375	114.8	163.5500	114.8	A
TACTICAL	9	166.7250	114.8	166.7250	114.8	A
AIR TO GROUND	15	168.1375		168.1375		A
9. Prepared By (Resource Unit Leader)		Approved By (Planning Section Chief)		Date	Time	
JILL JOHNSON		MARGE HUTCHINSON		08/31/2021	2000	

Division/Group Assignment List (ICS 204 WF)
Controlled Unclassified Information//Basic

1. Incident Name:				3.		
WALKER CREEK & CHICKADEE CREEK				Branch: WALKER	Division/Group T	
2. Operational Period: DAY/NIGHT						
Date/Time From: 09/01/2021 0600 WED		Date/Time To: 09/02/2021 0600 THU				
4. Operations Personnel						
OPERATIONS CHIEF		AARON ROWE JEROMY WILSON (T)		BRANCH DIRECTOR		JERRAN FLINDERS
SAFETY OFFICER		TROY CORN; JACK CATES		DIVISION/GROUP SUPERVISOR		MICHAEL JACKSON SETH JONES (T)
5. Resources Assigned this Period						
Strike Team / Task Force / Resource Designator	LWD	Leader	Number Persons	Drop Off PT./Time	Pick Up PT./Time	
E-349 WTS2 SC RIVER LMS	09/13	TIM SCIVER	1	DP-372/0600	DP-372/1800	
E-351 WTS2 TIMBERLINE TRUCKING	09/12	CALVIN GARRISON	1	DP-372/0600	DP-372/1800	
E-20C DOZ3 SILVER-NICKEL LOGGING	09/10	MATT CLOUGH	2	DP-372/0600	DP-372/1800	
E-80 DOZ3 MCMILLAN CONSTRUCTION	09/06	DOUG MCMILLAN	2	DP-372/0600	DP-372/1800	
E-181 DOZ3 MC NALL CONSTRUCTION	09/08	BRYAN TIM	2	DP-372/0600	DP-372/1800	
E-114 SKDS SOFT TRACK ATTACK	09/13	KEVIN LEE	2	DP-372/0600	DP-372/1800	
E-334 SKG2 PRICE EXCAVATION	09/13		2	DP-372/0600	DP-372/1800	
E-335 SKG2 ALVORD FIRE SUPPRESSION			1	DP-372/0600	DP-372/1800	
E-199 MAST MAST EAGLE CAP	09/07	BEN FISCHER	2	DP-372/0600	DP-372/1800	
O-396.1 EMPF	09/06	MACK MARIN	1	DP-372/0600	DP-372/1800	
8. Division/Group Communication Summary						
Function	Channel	RX Frequency N/W	RX Tone/NAC	TX Frequency N/W	TX Tone/NAC	Mode
COMMAND	1	170.0625	114.8	162.1750	114.8	A
COMMAND	2	170.3125	114.8	167.8375	114.8	A
COMMAND	3	170.4500	114.8	168.1000	114.8	A
COMMAND	4	172.5375	114.8	163.5500	114.8	A
TACTICAL	9	166.7250	114.8	166.7250	114.8	A
AIR TO GROUND	15	168.1375		168.1375		A
9. Prepared By (Resource Unit Leader)			Approved By (Planning Section Chief)		Date	Time
JILL JOHNSON			MARGE HUTCHINSON		08/31/2021	2000

Division/Group Assignment List (ICS 204 WF)
Controlled Unclassified Information//Basic

1. Incident Name:				3.		
WALKER CREEK & CHICKADEE CREEK				Branch: WALKER	Division/Group T	
2. Operational Period: DAY/NIGHT						
Date/Time From: 09/01/2021 0600 WED		Date/Time To: 09/02/2021 0600 THU				
4. Operations Personnel						
OPERATIONS CHIEF		AARON ROWE JEROMY WILSON (T)		BRANCH DIRECTOR		JERRAN FLINDERS
SAFETY OFFICER		TROY CORN; JACK CATES		DIVISION/GROUP SUPERVISOR		MICHAEL JACKSON SETH JONES (T)
5. Resources Assigned this Period						
Strike Team / Task Force / Resource Designator	LWD	Leader	Number Persons	Drop Off PT./Time	Pick Up PT./Time	
6. Control Operations/Work Assignments:						
<p>Task Secure and mop up fire perimeter between Q/T break to T/A break; consider predicted weather, seasonality and the likelihood of future fire progression beyond the current fire perimeter.</p> <p>Purpose Fire is contained east of the current fire perimeter.</p> <p>End State Fire perimeter between Q/T break and T/A break is controlled; threat of future fire progression to the west is limited.</p>						
7. Special Instructions:						
<p>Division breakout will be at DP-372.</p> <p>Notify READ if cultural materials are found during mop up. Leave in place, flag and GPS. READs (D. Pearson, M. Wilson & A. Miller) will notify DIVS when entering or leaving the division.</p>						
8. Division/Group Communication Summary						
Function	Channel	RX Frequency N/W	RX Tone/NAC	TX Frequency N/W	TX Tone/NAC	Mode
COMMAND	1	170.0625	114.8	162.1750	114.8	A
COMMAND	2	170.3125	114.8	167.8375	114.8	A
COMMAND	3	170.4500	114.8	168.1000	114.8	A
COMMAND	4	172.5375	114.8	163.5500	114.8	A
TACTICAL	9	166.7250	114.8	166.7250	114.8	A
AIR TO GROUND	15	168.1375		168.1375		A
9. Prepared By (Resource Unit Leader)			Approved By (Planning Section Chief)		Date	Time
JILL JOHNSON			MARGE HUTCHINSON		08/31/2021	2000

Division/Group Assignment List (ICS 204 WF)
Controlled Unclassified Information//Basic

1. Incident Name:				3.		
WALKER CREEK & CHICKADEE CREEK				Branch:	Division/Group C	
2. Operational Period: DAY/NIGHT						
Date/Time From: 09/01/2021 0600		Date/Time To: 09/02/2021 0600				
WED		THU				
4. Operations Personnel						
OPERATIONS CHIEF		AARON ROWE JEROMY WILSON (T)		BRANCH DIRECTOR		
SAFETY OFFICER		TROY CORN; JACK CATES		DIVISION/GROUP SUPERVISOR		BOB HINDS
5. Resources Assigned this Period						
Strike Team / Task Force / Resource Designator	LWD	Leader	Number Persons	Drop Off PT./Time	Pick Up PT./Time	
O-465 SOF2	09/13	LEA WOFFORD	1	SPEARS RANCH/0600	SPEARS RANCH/1800	
O-294 TFLD	09/02	SHANNON MOORE	1	SPEARS RANCH/0600	SPEARS RANCH/1800	
O-377 TFLD	09/07	STEPHEN DECOOK	1	SPEARS RANCH/0600	SPEARS RANCH/1800	
O-423 TFLD (T)	09/09	KYLE BUCKMILLER	1	SPEARS RANCH/0600	SPEARS RANCH/1800	
O-457 HEQB (T)	09/10	AARON NELSON	1	SPEARS RANCH/0600	SPEARS RANCH/1800	
O-9002 HEQB (LOAN)	09/08	SKYLER GOODRICH	1	SPEARS RANCH/0600	SPEARS RANCH/1800	
O-9006 HEQB (LOAN)	09/08	MATT SMITH	1	SPEARS RANCH/0600	SPEARS RANCH/1800	
O-247 FMOD BROTHERS FIRE LLC	09/05	TOM HOFFMAN	2	SPEARS RANCH/0600	SPEARS RANCH/1800	
C-78 HC1 BONNEVILLE IHC	09/09	ERIC EVANS	21	SPEARS RANCH/0600	SPEARS RANCH/1800	
C-80 HC2 COLVILLE 1	09/08	URISHA MARCONI	21	SPEARS RANCH/0600	SPEARS RANCH/1800	
C-9003 HC2I HIGHLANDS (LOAN)		SETH SCHERTENLEIB	20	SPEARS RANCH/0600	SPEARS RANCH/1800	
E-255 ENG4 WILD FIRE SERVICES	09/07	STEVE KURVAINK	3	SPEARS RANCH/0600	SPEARS RANCH/1800	
E-257 ENG5 METHOW RIVER WILD FIRE	09/07	ALEX WHITMAN	3	SPEARS RANCH/0600	SPEARS RANCH/1800	
E-336 ENG5 KALISPEL BRUSH-1	09/11	RYAN MARTIN	3	SPEARS RANCH/0600	SPEARS RANCH/1800	
E-337 ENG6 THE GENERAL	09/10	PAUL ANDERSON	2	SPEARS RANCH/0600	SPEARS RANCH/1800	
8. Division/Group Communication Summary						
Function	Channel	RX Frequency N/W	RX Tone/NAC	TX Frequency N/W	TX Tone/NAC	Mode
COMMAND	1	170.0625	114.8	162.1750	114.8	A
COMMAND	2	170.3125	114.8	167.8375	114.8	A
COMMAND	3	170.4500	114.8	168.1000	114.8	A
COMMAND	4	172.5375	114.8	163.5500	114.8	A
TACTICAL	10	166.7750	114.8	166.7750	114.8	A
AIR TO GROUND	13	170.2625		170.2625		A
9. Prepared By (Resource Unit Leader)		Approved By (Planning Section Chief)		Date	Time	
JILL JOHNSON		MARGE HUTCHINSON		08/31/2021	2000	

Division/Group Assignment List (ICS 204 WF)
Controlled Unclassified Information//Basic

1. Incident Name:				3.		
WALKER CREEK & CHICKADEE CREEK				Branch:	Division/Group C	
2. Operational Period: DAY/NIGHT						
Date/Time From: 09/01/2021 0600		Date/Time To: 09/02/2021 0600				
WED		THU				
4. Operations Personnel						
OPERATIONS CHIEF		AARON ROWE JEROMY WILSON (T)		BRANCH DIRECTOR		
SAFETY OFFICER		TROY CORN; JACK CATES		DIVISION/GROUP SUPERVISOR		BOB HINDS
5. Resources Assigned this Period						
Strike Team / Task Force / Resource Designator		LWD	Leader	Number Persons	Drop Off PT./Time	Pick Up PT./Time
E- ENG5 DNR ENG (LOAN)					SPEARS RANCH/0600	SPEARS RANCH/1800
E- ENG5 DNR ENG (LOAN)					SPEARS RANCH/0600	SPEARS RANCH/1800
E- ENG5 DNR ENG (LOAN)					SPEARS RANCH/0600	SPEARS RANCH/1800
E-16C WTS2 S PEND OREILLE T33		09/08	PAUL HAA	1	SPEARS RANCH/0600	SPEARS RANCH/1800
E-136 WTS2 OVERWATCH		09/08	ANDY ROMERO	1	SPEARS RANCH/0600	SPEARS RANCH/1800
E-350 WTS2 JOE PEONE LOGGING		09/12	DUANE HALL	1	SPEARS RANCH/0600	SPEARS RANCH/1800
E-352 WTS2 H & H FIRE CONTRACTING		09/12	TOM FERRO	1	SPEARS RANCH/0600	SPEARS RANCH/1800
E-12C DOZ2 KENNETH & DIANE SASSE		09/07	BURT SASSE	2	SPEARS RANCH/0600	SPEARS RANCH/1800
E-92 DOZ2 PRICE EXCAVATION LLC		09/03	JUSTIN LOTZE	2	SPEARS RANCH/0600	SPEARS RANCH/1800
E-201 DOZ3 HAVILLAH LOGGING CO		09/13	DAVID BURTON	1	SPEARS RANCH/0600	SPEARS RANCH/1800
E-14C EXCA WILL LOGGING & CONSTR		09/04	GARY WILLER SR	1	SPEARS RANCH/0600	SPEARS RANCH/1800
E-15C EXCA GASHO & GASHO		09/12	JUBLE MILLER	2	SPEARS RANCH/0600	SPEARS RANCH/1800
E-26 SKG1 WYEAST FORESTRY MANAGEMENT		08/30	BOYD GOLDFINCH	2	SPEARS RANCH/0600	SPEARS RANCH/1800
E-138 SKG1 SOFT TRACK ATTACK		09/04	JOSH COVEY	2	SPEARS RANCH/0600	SPEARS RANCH/1800
E-18C SKD2 RIDGELINE FORESTRY		09/13	YANCEY EPPERSON	2	SPEARS RANCH/0600	SPEARS RANCH/1800
8. Division/Group Communication Summary						
Function	Channel	RX Frequency N/W	RX Tone/NAC	TX Frequency N/W	TX Tone/NAC	Mode
COMMAND	1	170.0625	114.8	162.1750	114.8	A
COMMAND	2	170.3125	114.8	167.8375	114.8	A
COMMAND	3	170.4500	114.8	168.1000	114.8	A
COMMAND	4	172.5375	114.8	163.5500	114.8	A
TACTICAL	10	166.7750	114.8	166.7750	114.8	A
AIR TO GROUND	13	170.2625		170.2625		A
9. Prepared By (Resource Unit Leader)			Approved By (Planning Section Chief)		Date	Time
JILL JOHNSON			MARGE HUTCHINSON		08/31/2021	2000

Division/Group Assignment List (ICS 204 WF)
Controlled Unclassified Information//Basic

1. Incident Name:				3.		
WALKER CREEK & CHICKADEE CREEK				Branch:	Division/Group C	
2. Operational Period: DAY/NIGHT						
Date/Time From: 09/01/2021 0600 WED		Date/Time To: 09/02/2021 0600 THU				
4. Operations Personnel						
OPERATIONS CHIEF		AARON ROWE JEROMY WILSON (T)		BRANCH DIRECTOR		
SAFETY OFFICER		TROY CORN; JACK CATES		DIVISION/GROUP SUPERVISOR		BOB HINDS
5. Resources Assigned this Period						
Strike Team / Task Force / Resource Designator		LWD	Leader	Number Persons	Drop Off PT./Time	Pick Up PT./Time
E-21C SKD2 DOUBLE A LOGGING 1		09/08	SHAWN NIGG	1	SPEARS RANCH/0600	SPEARS RANCH/1800
E-205 SKD2 HAVILLAH LOGGING		09/10	BRANDON SUTTON	1	SPEARS RANCH/0600	SPEARS RANCH/1800
E-204 MAST HAVILLAH LOGGIN		09/11	TIM KERSHNER	1	SPEARS RANCH/0600	SPEARS RANCH/1800
E-353 LOG PROCESSOR RIDGELINE FORESTRY		09/11		2	SPEARS RANCH/0600	SPEARS RANCH/1800
E-368 LOG LOADER RIDGELINE FORESTRY					SPEARS RANCH/0600	SPEARS RANCH/1800
E-55 AMBU PEND OREILLE AMBU 2 (ALS)		09/11	RYAN TRILIEGI	2	SPEARS RANCH/0600	SPEARS RANCH/1800
O-273 EMPF		09/06	KEVIN SMITH	1	SPEARS RANCH/0600	SPEARS RANCH/1800
O-160 EMTF		09/01	MARA LANDRUM	1	SPEARS RANCH/0600	SPEARS RANCH/1800
6. Control Operations/Work Assignments:						
<p>Task Secure and mop up fire perimeter between O/C break and C/K break; consider predicted weather, seasonality and likelihood of future fire progression beyond the current fire perimeter.</p> <p>Purpose Fire progression is contained within the current fire perimeter.</p> <p>End State Fire is controlled within the current fire perimeter between O/C and C/K break.</p>						
7. Special Instructions:						
Division breakout will be at DP-145.						
8. Division/Group Communication Summary						
Function	Channel	RX Frequency N/W	RX Tone/NAC	TX Frequency N/W	TX Tone/NAC	Mode
COMMAND	1	170.0625	114.8	162.1750	114.8	A
COMMAND	2	170.3125	114.8	167.8375	114.8	A
COMMAND	3	170.4500	114.8	168.1000	114.8	A
COMMAND	4	172.5375	114.8	163.5500	114.8	A
TACTICAL	10	166.7750	114.8	166.7750	114.8	A
AIR TO GROUND	13	170.2625		170.2625		A
9. Prepared By (Resource Unit Leader)			Approved By (Planning Section Chief)		Date	Time
JILL JOHNSON			MARGE HUTCHINSON		08/31/2021	2000

Division/Group Assignment List (ICS 204 WF)
Controlled Unclassified Information//Basic

1. Incident Name:				3.		
WALKER CREEK & CHICKADEE CREEK				Branch:	Division/Group K/O	
2. Operational Period: DAY/NIGHT						
Date/Time From: 09/01/2021 0600 WED		Date/Time To: 09/02/2021 0600 THU				
4. Operations Personnel						
OPERATIONS CHIEF		AARON ROWE JEROMY WILSON (T)		BRANCH DIRECTOR		
SAFETY OFFICER		TROY CORN; JACK CATES		DIVISION/GROUP SUPERVISOR		CHET DIERINGER SAM STEINSHOUER (T)
5. Resources Assigned this Period						
Strike Team / Task Force / Resource Designator		LWD	Leader	Number Persons	Drop Off PT./Time	Pick Up PT./Time
O-465 SOF2		09/13	LEA WOFFORD	1	SPEARS RANCH/0600	SPEARS RANCH/1800
O-359 TFLD (T)		09/06	RYAN ROMERO	1	SPEARS RANCH/0600	SPEARS RANCH/1800
O-376 TFLD		09/05	BENNY MENDOZA	1	SPEARS RANCH/0600	SPEARS RANCH/1800
O-432 STEQ (T)		09/09	DAVID MORRILL	1	SPEARS RANCH/0600	SPEARS RANCH/1800
O-270 FOBS		09/01	JOANIE LAWRENCE	1	SPEARS RANCH/0600	SPEARS RANCH/1800
O-397 FOBS		09/02	ANDREW PARKER	1	SPEARS RANCH/0600	SPEARS RANCH/1800
C-71 HC2 TORRES CONTRACTING CREW-11		09/01	EMILIO MELGAREJO	20	SPEARS RANCH/0600	SPEARS RANCH/1800
C-81 HC2 LAVA RIVER FORESTRY 4		09/09	JOSH MARTINEZ	20	SPEARS RANCH/0600	SPEARS RANCH/1800
E- ENG5 DNR ENG 7103 (LOAN)				3	SPEARS RANCH/0600	SPEARS RANCH/1800
E- ENG5 DNR ENG 7108 (LOAN)				3	SPEARS RANCH/0600	SPEARS RANCH/1800
E- ENG5 DNR ENG 7111 (LOAN)				3	SPEARS RANCH/0600	SPEARS RANCH/1800
E- ENG5 DNR ENG 7202 (LOAN)				3	SPEARS RANCH/0600	SPEARS RANCH/1800
E- ENG5 DNR ENG 7203 (LOAN)				3	SPEARS RANCH/0600	SPEARS RANCH/1800
E-6C WTS2 TOLLEFSON CONSTR		09/06	EVAN BEVIER	1	SPEARS RANCH/0600	SPEARS RANCH/1800
E-22 WTS2 RAINS CONTRACTING		09/11	RON STODDARD	1	SPEARS RANCH/0600	SPEARS RANCH/1800
8. Division/Group Communication Summary						
Function	Channel	RX Frequency N/W	RX Tone/NAC	TX Frequency N/W	TX Tone/NAC	Mode
COMMAND	1	170.0625	114.8	162.1750	114.8	A
COMMAND	2	170.3125	114.8	167.8375	114.8	A
COMMAND	3	170.4500	114.8	168.1000	114.8	A
COMMAND	4	172.5375	114.8	163.5500	114.8	A
TACTICAL	7	168.2000	114.8	168.2000	114.8	A
AIR TO GROUND	13	170.2625		170.2625		A
9. Prepared By (Resource Unit Leader)			Approved By (Planning Section Chief)		Date	Time
JILL JOHNSON			MARGE HUTCHINSON		08/31/2021	2000

Division/Group Assignment List (ICS 204 WF)
Controlled Unclassified Information//Basic

1. Incident Name:			3.			
WALKER CREEK & CHICKADEE CREEK			Branch:		Division/Group	
2. Operational Period: DAY/NIGHT					K/O	
Date/Time From: 09/01/2021 0600 WED		Date/Time To: 09/02/2021 0600 THU				
4. Operations Personnel						
OPERATIONS CHIEF		AARON ROWE JEROMY WILSON (T)		BRANCH DIRECTOR		
SAFETY OFFICER		TROY CORN; JACK CATES		DIVISION/GROUP SUPERVISOR		CHET DIERINGER SAM STEINSHOUER (T)
5. Resources Assigned this Period						
Strike Team / Task Force / Resource Designator		LWD	Leader	Number Persons	Drop Off PT./Time	Pick Up PT./Time
E-176 WTS2 BTNG WILDFIRE		09/13	GEORGE THOMAS	1	SPEARS RANCH/0600	SPEARS RANCH/1800
E-177 WTS1 DOUBLE A LOGGING		09/07	TONY BROWN	1	SPEARS RANCH/0600	SPEARS RANCH/1800
E-26C DOZ3 DOUBLE A LOGGING		09/13	TYLER ACORD	2	SPEARS RANCH/0600	SPEARS RANCH/1800
E-25C EXCA DOUBLE A LOGGING		09/09	TOM ACORD	1	SPEARS RANCH/0600	SPEARS RANCH/1800
E-197 SKG3 TUNK CREEK LLC		09/04	DYLAN GREEN	2	SPEARS RANCH/0600	SPEARS RANCH/1800
E-22C SKD2 DOUBLE A LOGGING		09/10	BRYAN ACORD	1	SPEARS RANCH/0600	SPEARS RANCH/1800
E-112 SKDS SOFTTRACK ATTACK		09/09	PATRICK PRICE	2	SPEARS RANCH/0600	SPEARS RANCH/1800
E-140 SKDS SPENCER LOGGING LLC		09/06	COLE SPENCER	2	SPEARS RANCH/0600	SPEARS RANCH/1800
E-348 SKD1 TURLEY LOGGING		09/12	CODY HUBBARD	2	SPEARS RANCH/0600	SPEARS RANCH/1800
E-354 LOG DOUBLE A LOG LOADER		09/11	ROY ACORD	2	SPEARS RANCH/0600	SPEARS RANCH/1800
E-355 LOG PROCESSOR DOUBLE A		09/11	JERAMIAH BOARDWELL	2	SPEARS RANCH/0600	SPEARS RANCH/1800
E-108 UTV ADVENTURE SPORT			-- UNSTAFFED --		SPEARS RANCH/0600	SPEARS RANCH/1800
8. Division/Group Communication Summary						
Function	Channel	RX Frequency N/W	RX Tone/NAC	TX Frequency N/W	TX Tone/NAC	Mode
COMMAND	1	170.0625	114.8	162.1750	114.8	A
COMMAND	2	170.3125	114.8	167.8375	114.8	A
COMMAND	3	170.4500	114.8	168.1000	114.8	A
COMMAND	4	172.5375	114.8	163.5500	114.8	A
TACTICAL	7	168.2000	114.8	168.2000	114.8	A
AIR TO GROUND	13	170.2625		170.2625		A
9. Prepared By (Resource Unit Leader)			Approved By (Planning Section Chief)		Date	Time
JILL JOHNSON			MARGE HUTCHINSON		08/31/2021	2000

Division/Group Assignment List (ICS 204 WF)
Controlled Unclassified Information//Basic

1. Incident Name:			3.			
WALKER CREEK & CHICKADEE CREEK			Branch:		Division/Group	
2. Operational Period: DAY/NIGHT					K/O	
Date/Time From: 09/01/2021 0600 WED		Date/Time To: 09/02/2021 0600 THU				
4. Operations Personnel						
OPERATIONS CHIEF		AARON ROWE JEROMY WILSON (T)		BRANCH DIRECTOR		
SAFETY OFFICER		TROY CORN; JACK CATES		DIVISION/GROUP SUPERVISOR		CHET DIERINGER SAM STEINSHOUER (T)
5. Resources Assigned this Period						
Strike Team / Task Force / Resource Designator		LWD	Leader	Number Persons	Drop Off PT./Time	Pick Up PT./Time
O-220 EMTF		09/04	RYAN SATCHER	1	SPEARS RANCH/0600	SPEARS RANCH/1800
O-272 EMPF		09/03	MICHAEL COOPER	1	SPEARS RANCH/0600	SPEARS RANCH/1800
O-461 EMPF		09/05	KYLE MEADE	1	SPEARS RANCH/0600	SPEARS RANCH/1800
6. Control Operations/Work Assignments:						
<p>Task Secure and mop up fire perimeter between C/K break and O/C break; consider predicted weather, seasonality and likelihood of future fire progression beyond the current fire perimeter.</p> <p>Purpose Fire is contained within the current fire perimeter.</p> <p>End State Fire is controlled within the current fire perimeter between C/K break and O/C break.</p>						
7. Special Instructions:						
Division breakout will be at DP-140.						
8. Division/Group Communication Summary						
Function	Channel	RX Frequency N/W	RX Tone/NAC	TX Frequency N/W	TX Tone/NAC	Mode
COMMAND	1	170.0625	114.8	162.1750	114.8	A
COMMAND	2	170.3125	114.8	167.8375	114.8	A
COMMAND	3	170.4500	114.8	168.1000	114.8	A
COMMAND	4	172.5375	114.8	163.5500	114.8	A
TACTICAL	7	168.2000	114.8	168.2000	114.8	A
AIR TO GROUND	13	170.2625		170.2625		A
9. Prepared By (Resource Unit Leader)			Approved By (Planning Section Chief)		Date	Time
JILL JOHNSON			MARGE HUTCHINSON		08/31/2021	2000

Division/Group Assignment List (ICS 204 WF)
Controlled Unclassified Information//Basic

1. Incident Name:				3.		
WALKER CREEK & CHICKADEE CREEK				Branch:	Division/Group NIGHT	
2. Operational Period: DAY/NIGHT						
Date/Time From: 09/01/2021 0600 WED		Date/Time To: 09/02/2021 0600 THU				
4. Operations Personnel						
OPERATIONS CHIEF		AARON ROWE JEROMY WILSON (T)		BRANCH DIRECTOR		
SAFETY OFFICER		TROY CORN; JACK CATES		DIVISION/GROUP SUPERVISOR		DANIEL GLEASON SUSAN GREENLEAF (T)
5. Resources Assigned this Period						
Strike Team / Task Force / Resource Designator		LWD	Leader	Number Persons	Drop Off PT./Time	Pick Up PT./Time
E-14 ENG5 J3 CONTRACTING		09/01	TAYLOR EASLEY	3	BASE CAMP/1800	BASE CAMP/0600
E-19 ENG5 LL MEADOW WF (R&R)		09/03	DAMIAN RAMON	3	BASE CAMP/1800	BASE CAMP/0600
E-115 ENG3 OUTBACK FIREFIGHTING		09/07	SEAN WEST	3	BASE CAMP/1800	BASE CAMP/0600
E-116 ENG6 TORCH FIRE AND SECURITY		09/08	TRINITY KRIVANEC	3	BASE CAMP/1800	BASE CAMP/0600
E-122 ENG6 SMITHFIELD FD E640		09/01	DUSTIN HOOTON	2	BASE CAMP/1800	BASE CAMP/0600
E-156 WTS2 H & H ENTERPRISES		09/03	MARK ANDERSON	1	BASE CAMP/1800	BASE CAMP/0600
E-109 UTV ADVENTURE SPORT			-- UNSTAFFD --		BASE CAMP/1800	BASE CAMP/0600
O-462 EMPF		09/10	JOSH COUNTS	1	BASE CAMP/1800	BASE CAMP/0600
6. Control Operations/Work Assignments:						
<p>Task Patrol Chickadee and Walker incidents; secure fire line in areas with recent burn out operations as needed; mop up areas that pose threat to structures.</p> <p>Purpose Limit fire spread outside of established control lines; limit threat to structures.</p> <p>End State Fire is contained within established control lines; structures are not threatened.</p>						
7. Special Instructions:						
Division breakout will be at breezeway.						
8. Division/Group Communication Summary						
Function	Channel	RX Frequency N/W	RX Tone/NAC	TX Frequency N/W	TX Tone/NAC	Mode
COMMAND	1	170.0625	114.8	162.1750	114.8	A
COMMAND	2	170.3125	114.8	167.8375	114.8	A
COMMAND	3	170.4500	114.8	168.1000	114.8	A
COMMAND	4	172.5375	114.8	163.5500	114.8	A
TACTICAL	10	166.7750	114.8	166.7750	114.8	A
AIR TO GROUND	13	170.2625		170.2625		A
AIR TO GROUND	15	168.1375		168.1375		A
9. Prepared By (Resource Unit Leader)			Approved By (Planning Section Chief)		Date	Time
JILL JOHNSON			MARGE HUTCHINSON		08/31/2021	2000

DNR IMT Mop UP STANDARDS

Department of Natural Resources
Walker Creek WA-NES-2021-2245
Chickadee Creek WA-NES-2021-2310

These standards may be adjusted and modified as the incident progresses, but are intended to give the IMT direction for planning. Mop-up specifications apply only to DNR protected lands at this time. Rehab standards will be developed based on landowner objectives once the incident is controlled. Other agencies will provide specific direction for their jurisdictions.

Mop-Up Specifications

Always consider over-head hazards prior to putting fire fighters in harm's way for mop up. Mitigate hazards and exposure as needed.

Achieve 100% mop-up along and inside the fire perimeter to a distance that is adequate to ensure the perimeter is secure to prevent the fire from escaping across existing containment lines.

To reduce hazards to firefighters during final mop-up, fall snags that pose "imminent" danger along all open roads within the fire perimeter.

Known spot fires outside the control lines will be 100% mopped up where appropriate to do so, a route to them will be flagged, and the perimeter of spots mapped in GIS.

Mop-up of partially burned areas further inside the lines will be determined on a case-by-case basis.

For structures and sensitive resources within the interior of the fire line, mop-up to a level to ensure that there will be no future effects from the fire.

As mop-up specifications are met on a Division, Operations will develop a plan for the resources and equipment to be left in place that may be required for future contingency actions.

Mop-up will be verified by aerial infrared equipment and/or gridded prior to fire turn back to Land Manager or Protecting Agency.

Notify Agency Representative if a cultural site is found during mop-up.

DNR Agency Representative Name: Brett Walker 509-680-4029

AIR OPERATIONS SUMMARY

Controlled Unclassified Information//Basic

PREPARED BY: Greg Reser AOB (t)

PREPARED DATE/TIME: 8/31/2021 1900

1. INCIDENT NAME: Walker Cr. /Chickadee Cr.		2. OPERATIONAL PERIOD DATE: 9/1/21 START TIME: 0800 END TIME: 2000 SUNRISE: 0614 SUNSET: 1941 Pumpkin 2011				
3. REMARKS (Safety Notes, Hazards, Air Operations Special Equipment, etc.):					4. Ready Alert aircraft: Order ALS air ambulance (Lifeflight) through NEWICC Dispatch. Closest ALS helicopters are out of Brewster, WA with a 25 min flight time to the Walker fire. <u>Special remarks:</u> Wenatchee Short Haul 3JR at Lake Chelan, WA Airport. Response time roughly 45min to incident. Order thru AOB. Review Military Training Route activity and status each morning prior to missions. <u>Aviation Support Equipment:</u> WTS2 E-227 @ Omak Helibase Helibase Support Trailer E-36 @ Omak Helibase <u>Email cost to:</u> WalkerSpur.Aviation@gmail.com	
5. Helibase location Omak (OMK) 48-27.864617N 119-31.083250W Elev: 1,304' Base Phone: 360-489-7654 Unicom: OMK: 122.8 Tonasket W01: 122.9		6. TFR information Walker 1/7944 7NM SFC-9500FT Active: 0700-2100 Chickadee 1/7942 5NM SFC-9500FT Active: 0700-2100		7. FIXED WING		SEATS/Fireboss: Available out of Omak. Order through NEWICC. ATGS Platform: Order as needed through NEWICC.
8. PERSONNEL		Phone	9. FREQUENCIES	FM		AM
AOBD (t)- Greg Reser		307-350-2202	A/G Walker Pri	168.1375		
HEBM (t)- Dylan Kane		609-651-7431	A/G Walker Sec	169.5625		
			A/G Chickadee Pri	170.2625		
			TFR 1/9445 Walker		118.125	
			A/A Walker Rotor		126.3500	
			TFR 1/9449 Chickadee		118.775	
NE Washington Dispatch (NEWICC)		509-685-6900	A/A Chickadee Rotor		126.6250	
			A/G Ignitions Discreet	167.8375		
Colville UAO Ben Renfro		541-589-0452	DNR Flight Follow	151.3475 Tx(136.5)		
			Air Guard	168.6250 Tx(110.9)		

10. Helicopters	TY	MAKE/MODEL	BASE	START	AVAIL	REMARKS
N24CK (A-183) / Gelhausen	1	S-61A	OMK	0800	0830	EU / Tanked
N7CU (A-174) / Hogue	1	CH-47D	OMK	0800	0830	EU / Bucket
N12HX (A-204) / Carpenter	3	Bell 407	OMK	0800	0830	EU / HMGB +9

Mission Requests:

Air Attack: Requested through NEWICC as needed.

Lead Plane/Airtankers: Requested through NEWICC as needed.

Helicopters: Requested through Omak Helibase.

Approved By: Mike Davis AOB

INCIDENT RADIO COMMUNICATIONS PLAN (ICS 205)

Controlled Unclassified Information//Basic

1. Incident Name:	2. Date/Time Prepared:	3. Operational Period: DAY/NIGHT	
WALKER CREEK & CHICKADEE CREEK	Date: 08/31/2021 Time: 2000	Date/Time From: 09/01/2021 0600 WED	Date/Time To: 09/02/2021 0600 THU

4. Basic Radio Channel Use:

Zone Group	Ch #	Function	Channel Name/Trunked Radio System Talkgroup	Assignment	RX Freq	RX Tone/NAC	TX Freq	TX Tone/NAC	Mode (A,D, or M)	Remarks
	1	COMMAND	CMD1	ALL RESOURCES	170.0625	114.8	162.1750	114.8	A	LINKED TO CMD2, CMD3 & CMD4
	2	COMMAND	CMD2	ALL RESOURCES	170.3125	114.8	167.8375	114.8	A	LINKED TO CMD1, CMD 3 & CMD4
	3	COMMAND	CMD3	ALL RESOURCES	170.4500	114.8	168.1000	114.8	A	LINKED TO CMD1, CMD2 & CMD4
	4	COMMAND	CMD 4	ALL RESOURCES	172.5375	114.8	163.5500	114.8	A	LINKED TO CMD1, CMD2 & CMD3
	5	COMMAND	DNR TON	ALL RESOURCES	159.3675	118.8	151.2575	156.7	A	DNR TONASKET DISPATCH
	6	TACTICAL	TAC 6	DIV A / F	168.0500	114.8	168.0500	114.8	A	NIFC TAC
	7	TACTICAL	TAC 7	DIV O / K	168.2000	114.8	168.2000	114.8	A	NIFC TAC
	8	TACTICAL	TAC 8	DIV H	168.6000	114.8	168.6000	114.8	A	NIFC TAC
	9	TACTICAL	TAC 9	DIV T	166.7250	114.8	166.7250	114.8	A	NIFC TAC
	10	TACTICAL	TAC 10	DIV C/NIGHT	166.7750	114.8	166.7750	114.8	A	NIFC TAC
	11	TACTICAL	TAC 11	DIV Q	168.2500	114.8	168.2500	114.8	A	NIFC TAC
	12	TACTICAL	RED NET	ALL RESOURCES	153.8300		153.8300	156.7	A	EMS AMBU/AIR UNITS
	13	AIR TO GROUND	A/G CHICK	A/G CHICKADEE	170.2625		170.2625		A	NIFC A/G
	14	AIR TO GROUND	A/G SECONDARY	A/G SECONDARY	169.5625		169.5625		A	NIFC A/G
	15	AIR TO GROUND	A/G WALKER	A/G WALKER	168.1375		168.1375		A	NIFC A/G
	16	AIR GUARD	AIRGUARD	ALL RESOURCES	168.6250		168.6250	110.9	A	EMERGENCY USE ONLY

5. Special Instructions: CLONE Label: WALKER082821. ON THE ZONE LABEL OF KNG/BKR RADIO; FOR DPH PRESS AND HOLD THE # KEY AND LOOK AT DISPLAY

6. Prepared By (Communications Unit Leader)	Name: MISSY PARKER	Signature: <i>Missy Parker</i>
ICS 205	IAP Page	Date/Time: 08/31/2021 2000

Controlled Unclassified Information//Basic

WALKER CREEK FIRE DEMOB LIST
Wednesday September 1, 2021

DEMOB INSTRUCTIONS

Paperless and electronic demobilization will be used to the extent possible for all resources. **PLEASE LOOK closely at the Fire Name and Resource Number.** All finance documents will be emailed and signed virtually. Ensure all Final CTR's and Shift Tickets have been submitted to Finance the night before your demob day. Please be **PATIENT** as the phone lines are limited the and it takes a little longer for the virtual process.

DEMOB STEPS
(Must Be Done In Order)

1. If you have any items checked out by Supply and Communications, proceed to those areas to turn in equipment. If you don't have any items checked out, proceed to NEXT STEP.
2. If you were inspected upon arrival or need a No Claims/No Comp receipt, check out with Ground Support. If this does not apply, proceed to NEXT STEP.
3. Call Finance at 509-423-6011 or 509-433-1115 or 509-531-7418 to finalize paperwork.
4. Call DMOB at 206-473-1425 or 509-432-6143 to complete the process to be released.

***** CHICKADEE CREEK *****

EQUIPMENT

E-17c	0600	FEL1	RIDGELINE FORESTRY
E-23c	0630	GRD	DOUBLE A LOGGING
E-27c	0700	DOZ3	WILL LOGGING & CONSTRUCTION

***** WALKER CREEK *****

CREWS

C-69	0615	HC2I	DIAMOND FIRE 2B
C-70	0630	HC2I	UMA #1

EQUIPMENT

E-24	0600	AMBU	STEVENS SHERIFF
E-53	0600	FT3	MUD LAKE OIL
E-95	0615	ENG6	TENNESSEE E3762
E-202	0630	FEL1	HAVILLAH LOGGING
E-196	0645	PCT3	TUNK PUMPER CAT
E-214	0645	ENG6	WHITEHEAD

OVERHEAD

O-285	0600	HEQB	CURRIN, TRISTAN
O-331	0800	SPUL	STILLER, ELIZABETH
O-428	0600	HEQB	BRUBAKER, CHRISTOPHER
O-304	1400	FOBS	OLAGUE, PEDRO
O-278	1600	DIVS	GOOD, MICHAEL

THERE WILL BE NO ADDITIONAL CREW SWAPS MOVING FORWARD AS THE EQUIPMENT WILL JUST TIME OUT WITH CURRENT OPERATOR. EXTENSIONS WILL BE ALLOWED WITH THE APPROVAL OF OPERATIONS.

Walker Creek/Chickadee Fires COVID-19 PCR Testing Schedule:

ALL TESTING WILL BE PERFORMED BY LIFELINE AMBULANCE, LOOK FOR VEHICLES AT LOCATIONS BELOW

- Testing for Chickadee resources **09/01/21** will take place at **Spears Ranch 0600**
- Testing for Omak Stampede Camp resources **09/01/21** will take place near med unit at 1500

Walker Creek/Chickadee Fires COVID-19 PCR Testing Frequently Asked Questions:

Who should be PCR tested for COVID-19?

- Based on the number of positive COVID-19 cases on the Walker Creek/Chickadee Fires, Okanogan County Public Health has advised ALL firefighters assigned to the fires to be tested.

What happens if I test positive?

- If you test positive for COVID-19 but have mild or no symptoms, NW Team 12 has a plan in place to keep firefighters working while safely isolated from other crews. A positive test does not automatically mean you will be isolated and unable to work.
- If you test positive and your symptoms are more severe, NW Team 12 will work with Okanogan County Public Health to find the best solution for your isolation and recovery in coordination with your home unit.

What happens if I choose not to be tested?

- Firefighters who are not tested and have NO COVID-19 symptoms will be allowed to keep working, but will be isolated from other crews to prevent further spread from unidentified cases.
- Firefighters who choose not to be tested but ARE displaying COVID-19 like symptoms will be required to isolate according to Okanogan County Public Health recommendations and will not be allowed to continue working.

When and how will I get my test results?

- With the current backlog of tests at area labs, your test results will not be available for 24-48 hours, or in some cases longer. There will be no change to your work status while we await results. You will be able to access your results online as soon as they are available. Details will be provided to you when you are tested.

Is rapid testing available?

- Yes, rapid testing is available at all times, however these tests are most accurate for symptomatic patients and might not catch someone who is asymptomatic but still carrying COVID-19, which is why we recommend PCR testing for firefighters before they travel home.

WALKER CREEK/CHICKADEE FIRE COVID-19 MITIGATIONS

Supervisors are required to go over this list each morning with assigned resources- report any symptoms to medical unit.

In the last 24 hours have you experienced:

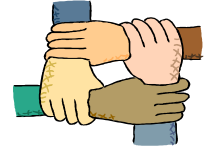
- Cough more than expected?
- Shortness of breath or difficulty breathing?
- Fever? Chills?
- Muscle pain, outside your normal for firefighting?
- Sore throat?
- New loss of taste or smell?
- Fatigue, outside your normal for firefighting?
- Headache, outside your normal for firefighting?
- Congestion or runny nose, outside your normal for firefighting?
- Nausea or vomiting
- Diarrhea

** Take temperature with no-touch thermometer, if available **

- **All personnel are required to wear a mask at all times, whether indoors or outdoors, unless working alone or actively engaged in firefighting on the fireline.**
- **Use radio or Zoom link provided to join briefings remotely.**
- **Observe 6ft Distancing at all times.**
- **Send crew representatives to pick up meals - masks must be worn in food lines.**
- **Wash hands frequently and disinfect high-traffic areas on a regular basis.**
- **Limit close contact between firefighters and the public to prevent exposure and spread. WEAR A MASK AT ALL TIMES WHILE IN PUBLIC PLACES.**



Human Resource Message



Walker Creek and Chickadee Creek Fires, September 1, 2021

Mutual Respect:

Mutual respect involves accepting differences in a respectful manner, promoting communication, and learning among team members based on the diversity of opinions and cultural backgrounds.

To show respect for others:

- **Listen** - Listening to what another person has to say is a basic way to respect them.
- **Affirm** - When we affirm someone, we are giving evidence that they matter
- **Serve** - that is why we are here
- **Be polite** – You may change someone’s day
- **Be kind** - You may save someone’s life
- **Be Thankful** -It is the way we affirm appreciation



Quote for the Day!

“Make improvements, not excuses. Seek respect, not attention.”

– Roy T. Bennett



Be safe and have a good day!

Susie Manezes, Human Resource Specialist -NW Team 12
Contact Number: 602-571-9327. smanezes@blm.gov

A Message from Public Information

TALKING TO THE PUBLIC ABOUT DONATIONS: *Please help us inform the public that firefighters are **UNABLE** to receive food donations.*

Community members are so grateful for the work you are doing that they **want to bring meals to the fireline, which we unfortunately cannot receive.**

If you are talking to the public and the subject of meals or supplies comes up, please **emphasize that as fire line resources, you carry and receive everything you need.** Thank you for helping us spread the word!

If community members have questions that you do not feel equipped to answer professionally, please give them our fire information line: (509) 557-7257.

PHOTOS: Your fireline photos help us build understanding with the public. Community members want to see what you see because you go where others can't safely go. We are looking for any pictures of the fire line and **fire resources working on the fire line in their PPE.** You can send photos to:

Email: 2021.walkercreek@firenet.gov

Text: (509) 557-7257

As always, make sure you're wearing all your PPE and conveying a professional, caring, and respectful attitude toward the homes and land in this community. Thanks for helping us out!

Lastly, while it's our job to talk to the public, we want you to know the public is talking to you too. Today we received this email from a happy cabin and landowner on the Walker Creek Fire:

"Today, I went up to check on the cabin after I heard the evacuation order had been lifted on Friday. I wish to give you all my heartfelt thanks for digging a hand line around the cabin, woodshed, and storage shed, as well as laying hose line with a pump in the creek next to the cabin. I had no idea this had been done. Thanks again for all the wonderful work you folks are doing!"



Logistics Message

Omak Base Camp

Kitchen Hours

0600 to 0900 Breakfast

1800 to 2100 Dinner

Supply/Cache Hours

0530-2130

Shower Hours

0430-1300 Open

1400-2300 Open

Ground Support

0500-2200



Walker Creek and Chickadee Creek Fire

Finance Message

2021.walkercreek.finance@firenet.gov
2021.chickadeecreek.finance@firenet.gov

(509)949-3210 FSC2 Cheri
(509) 423-6011 FSC2 (T) Christina

Make sure that your CTR and ST have the correct fire that you are working on.
Please make sure to call the appropriate person for assistance.

For all agency, casual
hire & Co-Ops
Call Carol at
(509) 433-1115

For all Contract
Resources (VIPR) or
DNR Hire at Fire
Call Todd at
(509) 939-9262
DNR Call Mark
(509)531-7418

*VIPR Contracts
questions or Problems
Call Rob
(509) 675-5821*

**Note to Contractors with
transports**

For all heavy equipment with a
transport, two operators
must be shown on the shift
ticket for the transport to receive
full pay.

Finance is all virtual. We will be happy to take all your paperwork, CTRs and Shift tickets all by email or text.

***Please be patient with us as we process your time for demob. Our finance section is working as quickly as possible to process your time.

Incident Maps

How to Download Maps in Avenza

If you're cell signal is poor you may need to connect to a wifi to download maps. However sometimes being connected to a wifi can slow map downloads. You'll just have to find out what works best.

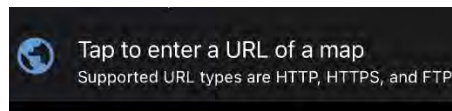
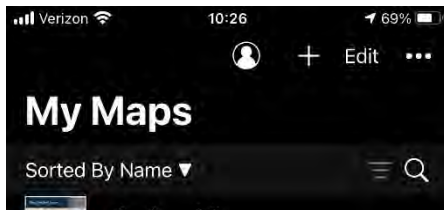
Method 1: From a browser - If you have a good cell or wifi signal

1. Tap on the desired map link and wait for the preview. *If it fails to load, use method 2 instead*
2. Tap the 'send to' icon (square with up arrow)
3. Choose the Avenza app



Method 2: From Avenza direct – if you don't have a good cell or wifi signal

1. Tap and hold on the desired map link, then choose 'copy' to copy the direct URL to the map
2. Launch the Avenza app
3. When not in any map... Tap the + (plus) icon at the top of the screen
4. Choose the load from URL option (last choice)
5. Paste the direct URL to the map
6. Tap 'Done' ; the map will begin downloading



How to Send Map Updates to the Situation Unit

1. From within the map in Avenza, click the pin with three lines near the lower-right corner.
2. *iPhone:* In the lower right, click the square with up arrow. From the pop-up menu, choose Export to Others.
Android: In the lower right, click the circle with three lines. Click the pop-up circle with up arrow.
3. Set these options:
 - a. Filename – leave alone
 - b. Export Format – choose SHP, GPX or KML
 - c. Data – all features
 - d. Image size – no image
4. Click the Export button in the upper-right corner.
5. When the export is ready, choose your Mail application.
6. Email the update to 2021.walker creek.situation@firenet.gov for the Walker Creek Fire map updates or 2021.chickadee creek.situation@firenet.gov for the Chickadee Fire map updates.
7. If you have questions, call or text the Situation Unit at 360-584-3373.
8. Your email needs to include an explanation of the data and a contact phone number.

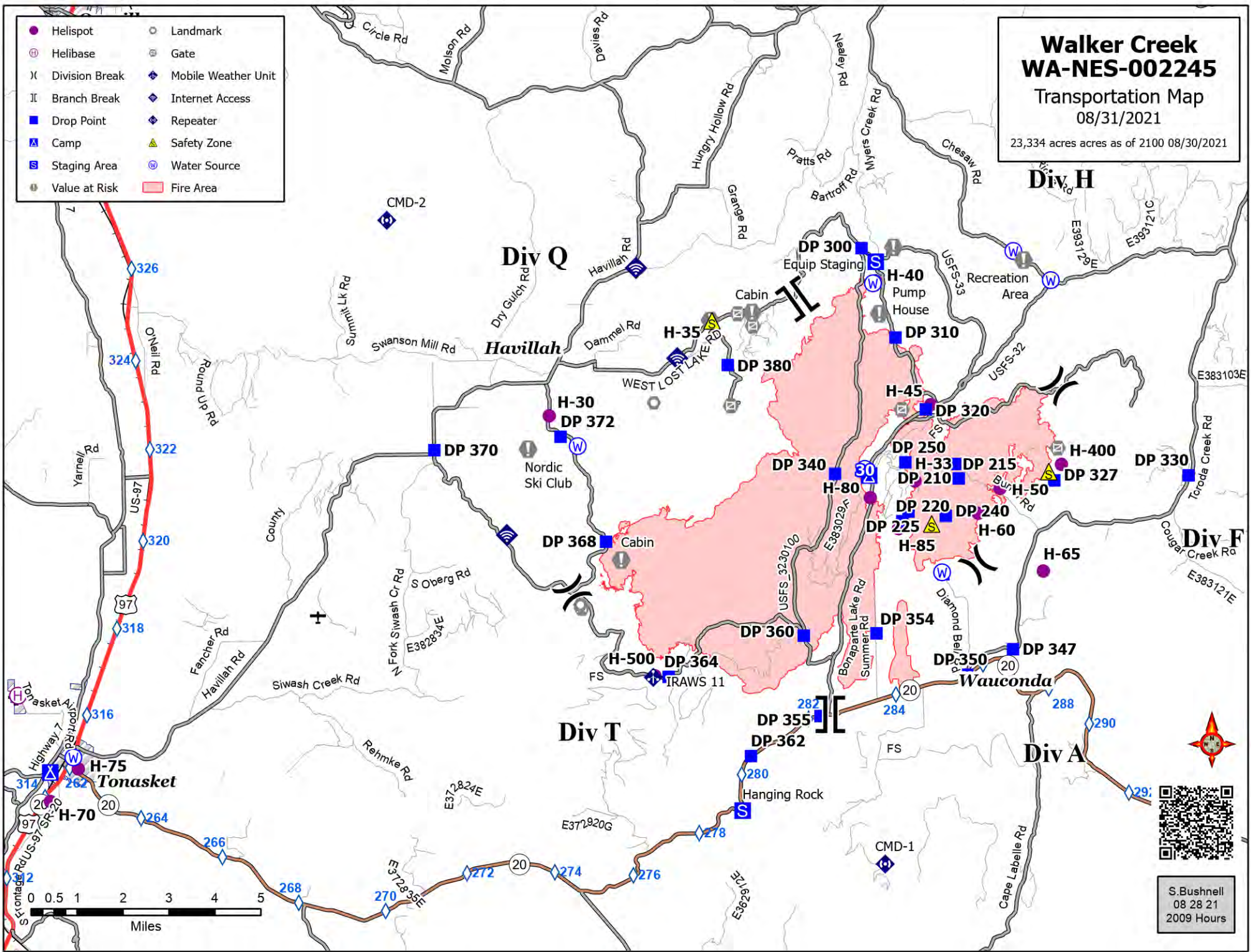
If all else fails draw your map update on your paper map, take a picture and it attach that to an email to the above addresses.

Walker Creek WA-NES-002245

Transportation Map
08/31/2021

23,334 acres as of 2100 08/30/2021

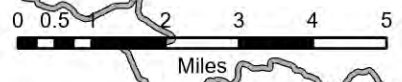
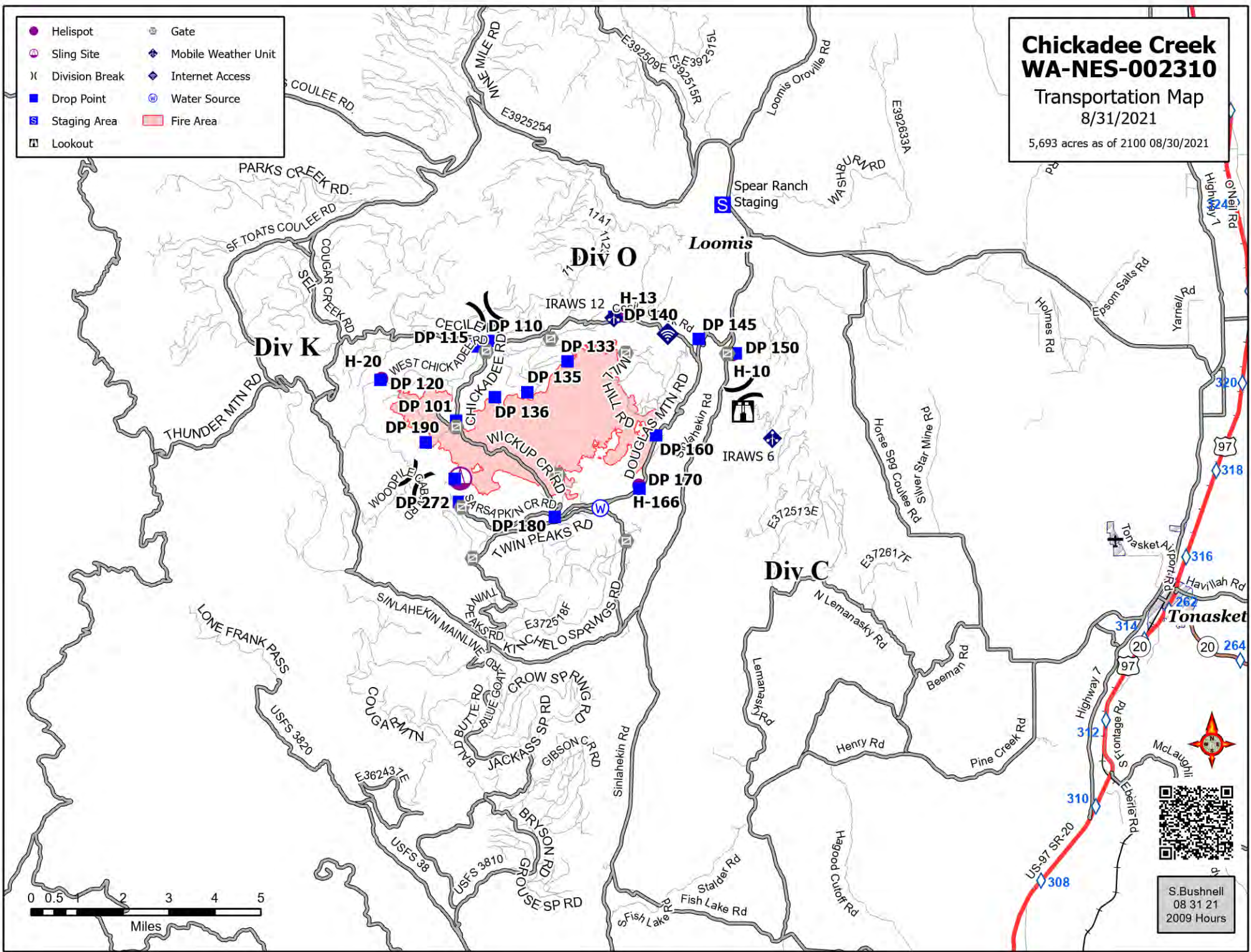
- | | |
|------------------|-----------------------|
| ● Helispot | ○ Landmark |
| ⊕ Helibase | ⊕ Gate |
| X Division Break | ◆ Mobile Weather Unit |
| Branch Break | ◆ Internet Access |
| ■ Drop Point | ◆ Repeater |
| ▲ Camp | ▲ Safety Zone |
| ■ Staging Area | ⊕ Water Source |
| ● Value at Risk | ■ Fire Area |



S. Bushnell
08 28 21
2009 Hours

- Helispot
- Ⓜ Sling Site
- X Division Break
- Drop Point
- Ⓜ Staging Area
- Ⓜ Lookout
- Ⓜ Gate
- Ⓜ Mobile Weather Unit
- Ⓜ Internet Access
- Ⓜ Water Source
- Fire Area

**Chickadee Creek
WA-NES-002310**
Transportation Map
8/31/2021
5,693 acres as of 2100 08/30/2021





 S. Bushnell
 08 31 21
 2009 Hours



EMERGENCY PLAN INCIDENT WITHIN AN INCIDENT

ON SCENE INCIDENT COMMANDER

In the event of an accident or medical incident of any size, your primary responsibility is to ENSURE that the victim(s) receive prompt and effective Triage, Treatment, Extrication and Transport.

- **ENSURE THE MEDICAL INCIDENT REPORT IN THE INCIDENT ACTION PLAN IS BEING USED AND FOLLOWED- *IF DETERMINED TO BE A GREEN, DO NOT DECLARE EMERGENCY TRAFFIC AND ONLY COMPLETE LINE 1-4 ON MIR*.**
- Conduct size-up of the incident nature of accident, number type of resources involved, latitude and longitude location (DD°MMM.MM format): notify incident communications center and supervisor, request assistance as needed.
- Order and coordinate medical and support response to the accident.
- Evaluate special needs (law enforcement, haz mat, etc.).
- Clear the command frequency if medical emergency, coordinate with incident communications and air attack for air medical transportation needs.
- Preserve and photograph the scene for accident investigation.
- Remain aware of surroundings and the status of the main incident (delegate personnel to monitor the main fire) to ensure safety of medical treatment personnel.
- Until relieved, supervise and manage all personnel involved at the incident scene.

MEDICAL PLAN (ICS 206 WF)

20 Incident/Project Name			1. Operational Period				
Walker Creek Fire			September 1st – 2nd, 2021 0600-0600				
2. Ambulance Services							
Name	Complete Address	Phone	Advanced Life Support (ALS) Yes No				
Lifeline Ambulance	912 Koala Ave Omak, WA 98841	911 - Dispatch 509-663-8091	X				
3. Air Ambulance Services							
Name	Phone	Type of Aircraft & Capability					
Life Flight Network	800-232-0911	Bell 407 - Brewster					
Airlift Northwest	800-426-2430 or 911	Rotor in Wenatchee					
4. Hospitals							
Name Complete Address	Coordinate Standard Degrees Decimal Minutes DD° MM.MMM' N - Lat DD° MM.MMM' W - Long	Travel Time From Bonaparte	Air	Gnd	Phone	Helipad Yes No	Level of Care Facility
North Valley Hospital 203 S Western Ave Tonasket, WA 98855	Lat: 48°42.4549' N	13 min	38 min	509-486-2151		X	Level 4 Trauma
	Long: 119°26.3267' W						
Mid-Valley Hospital 912 Koala Ave Omak, WA 98841	Lat: 48°23.8336' N	24 Min	59 min	509-826-1760		X	Level 4 Trauma
	Long: 119°32.8758' W						
Confluence Health Hospital (Central Washington Hospital) 1201 S Miller St. Wenatchee, WA 98801	Lat: 47°24.4340' N	1 Hr 12 min	2 Hr 48 min	509-662-1511		X	Level 2 Trauma
	Long: 120°19.3664' W						
Harborview Medical 325 9 th Ave Seattle, WA 98104	Lat: 47°36.1897' N	2 Hr 22 min	5 Hr	541-222-6929		X	Level 1 Trauma Burn Center
	Long: 122°19.4759' W						
5. Division Branch Group		Capability		Personnel			
Div A/F		Johnsen EMTF		AMR Ambulance (Ambo 3)			Byrd EMPF
Div H		Sewell EMPF					
Div Q		Bridges EMPF					
Div T		Marin EMPF					
Night Shift		Use Available Resources					
6. Prepared By (Medical Unit Leader)			7. Date/Time		8. Reviewed By (Safety Officer)		9. Date/Time
Lee Venning (T), Eamonn Ryan <i>Lee Venning</i>			08/31/2021 1800		Troy Corn <i>Troy Corn</i>		08/31/2021 1800

MEDICAL PLAN (ICS 206 WF)

20 Incident/Project Name		1. Operational Period					
<h2>Chickadee Creek Fire</h2>		September 1st - 2nd 2021 0600-0600					
2. Ambulance Services							
Name	Complete Address	Phone	Advanced Life Support (ALS) Yes No				
Lifeline Ambulance	912 Koala Ave Omak, WA 98841	911 - Dispatch 509-663-8091	X				
3. Air Ambulance Services							
Name	Phone	Type of Aircraft & Capability					
Life Flight Network	800-232-0911	Bell 407 - Brewster					
Airlift Northwest	800-426-2430 or 911	Rotor in Wenatchee					
4. Hospitals							
Name Complete Address	Coordinate Standard Degrees Decimal Minutes DD° MM.MMM' N - Lat DD° MM.MMM' W - Long	Travel Time From Loomis	Phone	Helipad Yes No	Level of Care Facility		
North Valley Hospital 203 S Western Ave Tonasket, WA 98855	Lat: 48°42.4549' N	8 min 22 min	509-486-2151		X	Level 4 Trauma	
	Long: 119°26.3267' W						
Mid-Valley Hospital 912 Koala Ave Omak, WA 98841	Lat: 48°23.8336' N	20 Min 46 min	509-826-1760	X		Level 4 Trauma	
	Long: 119°32.8758' W						
Confluence Health Hospital (Central Washington Hospital) 1201 S Miller St. Wenatchee, WA 98801	Lat: 47°24.4340' N	68 min 2 Hr 35 min	509-662-1511	X		Level 2 Trauma	
	Long: 120°19.3664' W						
Harborview Medical 325 9 th Ave Seattle, WA 98104	Lat: 47°36.1897' N	1Hr 38 min 4 Hr 50 min	541-222-6929	X		Level 1 Trauma Burn Center	
	Long: 122°19.4759' W						
5. Division Branch Group	Capability	Personnel					
Div C	Landrum EMTF	Pend Oreille Ambulance (Ambo 2) Triliegi			Smith EMPF (UTV)		
Div K/O	Satcher EMTF	Kyle Meade EMPF			Cooper EMPF		
Night Shift	Counts EMPF						
6. Prepared By (Medical Unit Leader)		7. Date/Time	8. Reviewed By (Safety Officer)			9. Date/Time	
Lee Venning (T), Eamonn Ryan <i>Lee Venning</i>		08/31/2021 1800	Troy Corn <i>Troy Corn</i>			08/31/2021 1800	

MEDICAL PLAN (ICS 206 WF)

Controlled Unclassified Information//Basic

Medical Incident Report

FOR A NON-EMERGENCY INCIDENT, WORK THROUGH CHAIN OF COMMAND TO REPORT AND TRANSPORT INJURED PERSONNEL AS NECESSARY.

FOR A MEDICAL EMERGENCY: IDENTIFY ON SCENE INCIDENT COMMANDER BY NAME AND POSITION AND ANNOUNCE "MEDICAL EMERGENCY" TO INITIATE RESPONSE FROM IMT COMMUNICATIONS/DISPATCH.

Use the following items to communicate situation to communications/dispatch.

1. CONTACT COMMUNICATIONS / DISPATCH (**Verify correct frequency prior to starting report**)

Ex: "Communications, Div. Alpha. Stand-by for Emergency Traffic."

2. INCIDENT STATUS: *Provide incident summary (including number of patients) and command structure.*

Ex: "Communications, I have a Red priority patient, unconscious, struck by a falling tree. Requesting air ambulance to Forest Road 1 at (Lat./Long.) This will be the Trout Meadow Medical, IC is TFLD Jones. EMT Smith is providing medical care."

Severity of Emergency / Transport Priority	<input type="checkbox"/> RED / PRIORITY 1 Life or limb threatening injury or illness. Evacuation need is IMMEDIATE <i>Ex: Unconscious, difficulty breathing, bleeding severely, 2° – 3° burns more than 4 palm sizes, heat stroke, disoriented.</i> <input type="checkbox"/> YELLOW / PRIORITY 2 Serious Injury or illness. Evacuation may be DELAYED if necessary. <i>Ex: Significant trauma, unable to walk, 2° – 3° burns not more than 1-3 palm sizes.</i> <input type="checkbox"/> GREEN / PRIORITY 3 Minor Injury or illness. Non-Emergency transport <i>Ex: Sprains, strains, minor heat-related illness.</i>	
Nature of Injury or Illness & Mechanism of Injury		<i>Brief Summary of Injury or Illness (Ex: Unconscious, Struck by Falling Tree)</i>
Transport Request		<i>Air Ambulance / Short Haul/Hoist Ground Ambulance / Other</i>
Patient Location		<i>Descriptive Location & Lat. / Long. (WGS84)</i>
Incident Name		<i>Geographic Name + "Medical" (Ex: Trout Meadow Medical)</i>
On-Scene Incident Commander		<i>Name of on-scene IC of Incident within an Incident (Ex: TFLD Jones)</i>
Patient Care		<i>Name of Care Provider (Ex: EMT Smith)</i>

3. INITIAL PATIENT ASSESSMENT: *Complete this section for each patient as applicable (start with the most severe patient)*

Patient Assessment: See IRPG page 106

Treatment:

4. TRANSPORT PLAN:

Evacuation Location (*if different*): (*Descriptive Location (drop point, intersection, etc.) or Lat. / Long.*) Patient's ETA to Evacuation Location:

Helispot / Extraction Site Size and Hazards:

5. ADDITIONAL RESOURCES / EQUIPMENT NEEDS:

Example: Paramedic/EMT, Crews, Immobilization Devices, AED, Oxygen, Trauma Bag, IV/Fluid(s), Splints, Rope rescue, Wheeled litter, HAZMAT, Extrication

6. COMMUNICATIONS: Identify State Air/Ground EMS Frequencies and Hospital Contacts as applicable

Function	Channel Name/Number	Receive (RX)	Tone/NAC *	Transmit (TX)	Tone/NAC *
COMMAND					
AIR-TO-GRND					
TACTICAL					

7. CONTINGENCY: **Considerations:** *If primary options fail, what actions can be implemented in conjunction with primary evacuation method? Be thinking ahead.*

8. ADDITIONAL INFORMATION: *Updates/Changes, etc.*

REMEMBER: Confirm ETA's of resources ordered. Act according to your level of training. Be Alert. Keep Calm. Think Clearly. Act Decisively.

Controlled Unclassified Information//Basic