

INCIDENT ACTION PLAN

Walker Creek / Chickadee Creek

September 2, 2021

Operational Period - 0600-1800



BRIEFING Phone
(audio only)
[+1 929-336-2435](tel:+19293362435),
[452803978#](tel:+1452803978)
Phone Conference
ID: 452 803 978#

QR Code for:
Virtual Check-in
Time
Maps
IAP
COVID19 Self Test



Chickadee Creek Fire

WA-NES-002310
PNN7WA (1522)
221-JFZ

Walker Creek Fire

WA-NES-002245
PNN7RL (1522)
WA state code: 221KPI

INCIDENT OBJECTIVES (ICS 202)

1. Incident Name:	2. Operational Period: DAY	
WALKER CREEK & CHICKADEE CREEK	Date/Time From: 09/02/2021 0600 THU	Date/Time To: 09/02/2021 1800 THU
3. Objective(s):		
<p>-Protection of human life and safety is the first priority for all actions, and can overrule all other strategic and incident objectives and management and incident requirements.</p> <p>-Base management decisions on meeting objectives while also minimizing the risk of COVID-19 exposure to responders and the public. COVID-19 considerations may alter how goals are met goals but should not lead to higher-risk tactics.</p> <p>-Secure fire, construct line, patrol and mop up as directed by operations to eliminate the risk of loss of containment when hazards have been mitigated to an acceptable risk level. This may require burning in areas of the fires depending on the weather and conditions to meet suppression objectives.</p> <p>-Monitor fire activity and, protect as needed, the WUI infrastructure, timber values, recreation areas, FS campgrounds, and facilities.</p> <p>-Implement and coordinate suppression and suppression repair actions to minimize impacts to the resource area, local roadless areas, and other points of high value by ensuring standards are followed. Mitigate damage caused by suppression activities, as resources and time allow. Suppression is still the primary objective. Release resources being used for suppression repair that are a critical need to the national firefighting effort unless they are directly tied to life, safety, or additional damage.</p>		
4. Operational Period Command Emphasis:		
Secure and mop-up direct control lines. Improve indirect control lines, make preparations for firing operations.		
General Situational Awareness:		
Maintain situational awareness, identify hazards and develop mitigations for them.		
5. Site Safety Plan Required? Yes <input type="checkbox"/> No <input checked="" type="checkbox"/>		
Approved Site Safety Plan(s) Located		
6. Incident Action Plan (the items checked below are included in this Incident Action Plan):		
<input checked="" type="checkbox"/> ICS 202 <input checked="" type="checkbox"/> ICS 203 <input checked="" type="checkbox"/> ICS 204 <input checked="" type="checkbox"/> ICS 205 <input type="checkbox"/> ICS 205A <input checked="" type="checkbox"/> ICS 206	<input type="checkbox"/> ICS 207 <input type="checkbox"/> ICS 208 <input checked="" type="checkbox"/> ICS 220 <input checked="" type="checkbox"/> Map/Chart <input checked="" type="checkbox"/> Weather Forecast/Tides/Currents	Other Attachments: <input checked="" type="checkbox"/> HR MESSAGE <input checked="" type="checkbox"/> COVID SCREENING <input type="checkbox"/> _____ <input type="checkbox"/> _____
7. Prepared by: MARGE HUTCHINSON	Position/Title: PSC2	Signature: <i>Marge Hutchinson</i>
8. Approved by Incident Commander:		Signature: <i>Jeff Dimke</i>
ICS 202	IAP Page	Date/Time: 09/01/2021 2000

ORGANIZATION ASSIGNMENT LIST (ICS 203)

1. Incident Name:		2. Operational Period: DAY	
WALKER CREEK & CHICKADEE CREEK		Date/Time From: 09/02/2021 0600 THU	Date/Time To: 09/02/2021 1800 THU
3. Incident Commander(s) and Command Staff:		FOOD UNIT	RUSS HOVEY
IC/UC	JEFF DIMKE	SECURITY UNIT	
DEPUTY	BOBBY SHINDELAR (VIRTUAL)	7. Operations Section:	
SAFETY OFFICER	TROY CORN JACK CATES (VIRTUAL)	PLANNING OPS	AARON ROWE MIKE DAVIS (T)
INFORMATION OFFICER	MARY BEAN ROLAND EMETAZ	OPS SECTION CHIEF	JEROMY WILSON (T)
LIAISON OFFICER	SCOTT CRAWFORD	BRANCH DIRECTOR	JERRAN FLINDERS
HEALTH LIAISON	LIV STECKER		
HUMAN RESOURCE SPECIALIST	SUSIE MANEZES	DIVISION/GROUP	A/F CODY ACORD JASON EMHOFF
4. Agency/Organization Representative(s):		DIVISION/GROUP	H MATT KENNEDY
Agency/Organization	Name	DIVISION/GROUP	Q DANIEL GLEASON JAMES DICKINSON (T)
DNR	KEN MCNAMEE (ADMIN) BRETT WALKER (AREP)	DIVISION/GROUP	T MICHAEL JACKSON SETH JONES (T)
USFS	RODNEY SMOLDEN (ADMIN) MATT MARSH (AREP)	DIVISION/GROUP	C BOB HINDS SUSAN GREENLEAF (T)
BLM	ERICA TAECKER (ADMIN)		
OKANOGAN COUNTY OES	MAURICE GOODALL	DIVISION/GROUP	K/O CHET DIERINGER SAM STEINSHOUER (T)
5. Planning Section:		7b. Air Operations Branch:	
CHIEF	MARGE HUTCHINSON	AIR OPS BRANCH DIRECTOR	GREG RESER (T)
DEPUTY	HOWARD JOHNSON (VIRTUAL)	AIR ATTACK SUPERVISOR	
RESOURCES UNIT	JILL JOHNSON	AIR SUPPORT SUPERVISOR	
SITUATION UNIT	DAVE WISCHER (VIRTUAL)	8. Finance/Administration Section:	
DOCUMENTATION UNIT	DEIDRE SMITH (VIRTUAL))	CHIEF	CHERI FULLER CHRISTINA GOEBEL (T)
DEMOBILIZATION UNIT	MIKE HESTON (VIRTUAL) ED MORGAN	TIME UNIT	CAROL LONG
FIRE BEHAVIOR ANALYST	DON STRAND	PROCUREMENT UNIT	MARK BOHNET
GIS SPECIALIST	SHAWN BUSHNELL MIKE TONKEL (T)	COMPENSATION UNIT	CHERI FULLER
TECHNOLOGY SUPPORT SPECIALIST	GEORGE JENKINS TODD MALLERY	COST UNIT	KAY HIGH (VIRTUAL)
INCIDENT METEOROLOGIST	TOM BIRD	ICPI	ROB HECHINGER
6. Logistics Section:			
CHIEF	DAN SOPTICH		
DEPUTY	KEVIN HAUGHTON		
FACILITIES UNIT	SCOTT BEAULAUER		
GROUND SUPPORT UNIT	DAVE HARSH		
COMMUNICATIONS UNIT	MISSY PARKER		
MEDICAL UNIT	EAMONN RYAN LEE VENNING (T)		
SUPPLY UNIT	JOHN KAUPA		
9. Prepared By:	Name: JILL JOHNSON	Position/Title: RESL	Signature:
ICS 203	IAP Page	Date/Time: 09/01/2021 2000	<i>Jill Johnson</i>



Fire Weather Forecast



FORECAST NO: 26
PREDICTION FOR: Thursday
SHIFTDATE: September 2, 2021
FORECAST ISSUED: 9/1/2021 at 2000

INCIDENT: Walker-Chickadee Fires
UNIT: DNR-USFS-BLM
Tom Bird - (915) 588-9781 tom.bird@noaa.gov
SIGNED: Incident Meteorologist (IMET)

Weather Discussion: ***Warmer and Drier through the weekend***

Another weak lobe of low pressure aloft will rotate over the fires today, but with minimal moisture remaining, and weak dynamics, it will do no more than provide a few fair-weather clouds this afternoon. Today will begin a moderate warming and drying across north central Washington. Temperatures will gradually warm through the weekend, back to seasonal averages, and above. With generally dry air in place, and warmer temperatures, relative humidity will creep downward back into the 20% range. Although there will be some breezes over exposed terrain and through gaps, winds should be moderate, with breezy afternoons over the weekend.

WEATHER FORECAST for CHICKADEE FIRE

TODAY:

SKY/WEATHER: Decreased clouds – Mostly Sunny. Warmer and drier. Lighter winds.
High Temperature...64-69° above 4000 ft...68-73° below 4000 ft. (24hr chg +5°)
Min RH.....28-32% above 4000 ft...24-28% below 4000 ft. (24hr chg -7%)
20-FOOT WINDS: Terrain influenced 3-8 mph, except ridges with winds NW 5-9 mph gusts to 15 mph.
CWR (>=0.10")....0% **LAL....**1 **Haines Index...3 (Very Low)** **Mixing Height...6400 ft AGL**

TONIGHT:

SKY/WEATHER: Mostly Clear. Not quite as chilly. Lighter winds over exposed areas.
Low Temperature...Slopes: 48-53°. Valleys: 42-48°
Max RH.....Slopes: 43-48% Valleys: 45-55%
20-FOOT WINDS: Generally down drainage 3-6 mph. **Ridges & N/S valleys:** North 5-12 mph.
CWR (>=0.10")....0% **LAL....**1

WEATHER FORECAST for WALKER FIRE

TODAY:

SKY/WEATHER: Decreased clouds – Mostly Sunny. Warmer and drier. Lighter winds.
High Temperature...64-69° above 4000 ft...67-71° below 4000 ft. (24hr chg +5°)
Min RH.....28-32% above 4000 ft...24-28% below 4000 ft. (24hr chg -7%)
20-FOOT WINDS **Low Temperature...**Slopes: 48-53°. Valleys: 42-48°
: Terrain influenced 3-8 mph, except ridges with winds N 5-9 mph gusts to 15 mph.
CWR (>=0.10")....0% **LAL....**1 **Haines Index...3 (Very Low)** **Mixing Height...6700 ft AGL**

TONIGHT:

SKY/WEATHER: Mostly Clear. Not quite as chilly. Lighter winds over exposed areas.
Low Temperature...Slopes: 45-50°. Valleys: 40-45°
Max RH.....Slopes: 45-55% Valleys: 50-60%
20-FOOT WINDS: Generally down drainage 3-6 mph. **Ridges & N/S valleys:** North 5-12 mph.
CWR (>=0.10")....0% **LAL....**1

Extended Outlook

FRIDAY: Partly cloudy. High: 65-75. Min RH: 25-30% Winds: Southwest 5-8 gusts to 12 mph.
SATURDAY: Mostly cloudy. Breezy. A slight chance of showers overnight through the morning. High: 65-75. Min RH: 25-35% Winds: Southwest 10-15 mph with gusts 20-25 mph.
SUNDAY: Partly cloudy and clearing. Dry and seasonal. Mildly breezy. High: 65-75. Min RH: 25-35% Winds: West 5-15 mph with gusts to 20 mph.

FIRE BEHAVIOR FORECAST

FORECAST NUMBER: 26	TYPE OF FIRE: Wildland
FIRE NAME: Walker Creek & Chickadee Creek	OPERATIONAL PERIOD: Sept 2, 2021 0600-0600
DATE ISSUED: September 1, 2021	TIME ISSUED: 2000
UNIT: WA DNR, BLM, USFS	Don Strand FBAN

INPUTS

WEATHER SUMMARY: See attached fire weather forecast

OUTPUTS

FIRE BEHAVIOR

FUELS: The fires are burning mostly in mixed conifer timber litter consisting of Douglas-fir (many with dwarf mistletoe clumps), western larch, Engelmann spruce reproduction and overstory., and lodgepole pine below 6,000'. Sub-alpine fir, white bark pine, and lodgepole pine occur above 6,000'. All timber types have ladder fuels with black moss/lichens that make for an easy transition to crown fire. Dead fine fuels, grass (where not heavily grazed), and slash can increase surface fire spread. Most live fuels, except for red alder, are available to carry fire and fuel moistures will continue to drop with seasonal drying. Live fuels are still drought stressed.

GENERAL: Slightly warmer and drier with breezy northerly winds today. Expect smoldering and creeping fire behavior in available surface fuels. Potential for isolated torching where jackpots of fuel exist under ladder fuels. Pay attention to areas exposed to winds. A slight increase in fire intensity likely where winds can penetrate canopies. As humidity approaches 30% in some areas on the fires, anticipate a slight up tic in fire behavior..

SPECIFIC:

Chickadee: Expect continued smoldering and creeping fire behavior. Still potential for torching and short-range spotting. Roll outs on steeper slopes are another method of fire spread. Areas exposed to northerly winds have potential to see an increase in intensity.

Fuel Moistures- Aeneas LO WIMS data from yesterday were- 10-hour 10%, 100-hour 12%, 1000-hour 14%. ERC 42.

Probability of Ignition will approach 60% unshaded and 30% shaded.

Walker: Continued smoldering and creeping fire behavior. Potential for winds channeling through saddles. Islands of unburned fuels and areas of dirty burns will slowly spread with light potential for torching and spotting.

Fuel Moistures- Lost Lake RAWS WIMS data from yesterday were- 10-hour 14%, 100-hour 12%, 1000-hour 14%. ERC 40.

Probability of Ignition will approach 60% unshaded and 30% shaded.

AIR OPERATIONS: Expect some turbulence in areas of complex terrain

SAFETY

Potential for flare ups exists in areas of dirty burns with heat treated/scorched ladder fuels close to open flame.

Remember: Base all actions on current and expected fire behavior.



SAFETY MESSAGE

2 September 2021

INCIDENT: Walker Creek/Chickadee

OPERATIONAL PERIOD: 0600-1800

KEYS TO RESILIENCY

Broadly defined, resilience is the capacity to recover quickly from difficulties and spring back to one's original form. Here are some key traits to create/maintain resiliency:

Positive vs Negative Thinking
Task Oriented
Flexible Thinking
Maintaining Physical Health and Avoiding Risks

WORKING AROUND HEAVY EQUIPMENT

Post lookouts around equipment work areas. Establish communications with equipment boss and operator. Do not work down slope from equipment. Familiarize crews with specialty equipment and processes. Follow JHA for specific equipment use.

COVID MITIGATIONS

Please review your COVID/Viral Transmission prevention guidelines. Maintain your distancing to the greatest extent, cough or sneeze away from other people, mask up when indoors and respect the personal space of others. If you begin feeling ill, notify your supervisor and seek medical attention for screening.

Ensure LCES in in place before engaging and continue to evaluate during the entire shift.

SAFETY OFFICER: Troy Corn, Jack Cates

Deliberate Risk Assessment-Hazard Summary

2 September 2021

Hazard	Mitigation	Post Risk
Viral Transmission Mitigations, Communicable Disease	Maintain awareness of health, perform self checks, maintain social distancing, wear face coverings when indoors or when social distancing cannot be maintained. Report and isolate if feeling symptomatic. Coordinate with Okanogan County Public Health for testing, reporting and isolation as needed. Conduct testing of personnel with exposure to known positive cases.	Low
Extraction Time	Identify medivac sites and helispots. Initiate ground transport to accident site. Identify EMT/EMTP from resources assigned to division. Provide line qualified paramedics to each division as available. Review IWI protocol to ensure familiarity. Utilize civilian medivac as treatment/timing dictates. Evaluate on-going need for repositioning medical personnel.	High
Heavy Equipment	Post lookouts around equipment work areas. Establish communications with equipment boss and operator. Do not work down slope from equipment. Familiarize crews with specialty equipment and processes.	High
Hazard Trees	Use avoidance to limit exposure time. Snag ahead to avoid exposure. Use qualified fallers, blasting, or alternate methods if needed. Conduct on-going risk analysis of all work areas. Follow Hazard Tree Safety Guidelines (IRPG page 22).	High
Aircraft	Utilize Air Attack. Ensure all resources are a safe distance from all bucket and retardant drops. Establish LCES. Utilize air to ground primary radio channel. Reference IRPG (Safe aircraft operations pg. 56-58). Ensure IA resources have coordination with unassigned local air resources to provide deconfliction.	High
Steep Terrain/Gravity	Do not work crews above or below each other. Post lookouts for rolling material. Watch footing in loose soil, rock and around vegetation. Do not work below heavy equipment. Scout and identify travel routes. Establish LCES.	Moderate
Physical Factors	Maintain hydration schedule. Closely monitor work rate and implement rest periods. Maintain nutrition. Ensure adequate work/rest.	Moderate
Environmental Factors	Assign medical personnel to camp. Assess for known allergies and report to medical personnel. Obtain Bee Bopper/wasp spray and yellow jacket traps. Maintain an awareness of livestock. Keep an eye out for wildlife including bears, cougars, and rattlesnakes.	Moderate
Fire Behavior	Be aware of burn windows and weather impacts and min/max RH for flashy fuels/local conditions. Be aware of increased fire behavior and concerns specific to thunderstorm safety (IRPG p. 21). Report changes to FBAN and IMET. Include thunderstorm safety message in IAP.	Moderate
Unburned Fuels/Firing Ops	Establish LCES. Ensure management action points are implemented and followed. Weather updates as needed during burning operations. Locate indirect firelines to minimize the amount of unburned fuels. Follow Interagency Ignition Guide. Ensure communications between all firing operations. Establish road security at all firing sites. Follow approved firing plan for unburned fuels.	Moderate
Transportation	Signing of all incident roads that provide access to divisions. Daily updated travel plan maps. Practice defensive driving. In local communities obey the posted speed limits. Use reader boards to control entry as needed. Identify and evaluate contingency and alternate escape and travel routes.	Moderate
Communication	Evaluate for dead zones prior to engagement. Utilize human repeaters as needed. Ensure accountability of resources in problem areas.	Low
Public Interaction	Place new road closures as necessary and maintain current closures. Maintain awareness of evacuation areas and provide accurate information dissemination.	Low

Division/Group Assignment List (ICS 204 WF)
Controlled Unclassified Information//Basic

1. Incident Name:				3.		
WALKER CREEK & CHICKADEE CREEK				Branch: WALKER	Division/Group A/F	
2. Operational Period: DAY						
Date/Time From: 09/02/2021 0600 THU		Date/Time To: 09/02/2021 1800 THU				
4. Operations Personnel						
OPERATIONS CHIEF		AARON ROWE JEROMY WILSON (T); MIKE DAVIS (T)		BRANCH DIRECTOR		JERRAN FLINDERS
SAFETY OFFICER		TROY CORN; JACK CATES		DIVISION/GROUP SUPERVISOR		JASON EMHOFF
5. Resources Assigned this Period						
Strike Team / Task Force / Resource Designator	LWD	Leader	Number Persons	Drop Off PT./Time	Pick Up PT./Time	
O-436 SOF2	09/13	TAIJA CORSO	1	DP-354/0600	DP-354/1800	
O-450 SOF2 (T)	09/02	PHIL GRAHAM	1	DP-354/0600	DP-354/1800	
O-350 TFLD (T)	09/06	CORY FISCHER	1	DP-354/0600	DP-354/1800	
O-477.1 TFLD (LOAN)	09/10	ROBERT COTA	1	DP-354/0600	DP-354/1800	
O-422 SMOD REPUBLIC C-201 (LOAN)	09/06	BRAD FREDRICKSON	10	DP-354/0600	DP-354/1800	
O-477 SMOD BOXELDER JOB CORPS (LOAN)	09/04	KEVIN ARGUETA	10	DP-354/0600	DP-354/1800	
E-123 ENG4 HI COUNTRY	09/09	TYLER STEVENSON	3	DP-354/0600	DP-354/1800	
E-218 ENG4 IDAHO HEATSEEKER 19	09/04	CASEY JOHNSON	3	DP-354/0600	DP-354/1800	
E-235 ENG5 SPOKANE B51	09/02	JOSH SAMPSON	3	DP-354/0600	DP-354/1800	
E-236 ENG3 WA-SPFN 3	09/03	DENNIS STARRING	3	DP-354/0600	DP-354/1800	
E-256 ENG5 WILD FIRE SERVICES	09/07	JAMIE RODOM	3	DP-354/0600	DP-354/1800	
E-284 ENG6 REPUBLIC E622 (IA)	09/06	GABE GIDDINGS	4	DP-354/0600	DP-354/1800	
E-174 WTS2 STOTTS CONSTRUCTION	09/11	DAVID HARCOURT	1	DP-354/0600	DP-354/1800	
E-175 WTS3 STOTTS CONSTRUCTION	09/03	JOSEPH HUDSON	1	DP-354/0600	DP-354/1800	
8. Division/Group Communication Summary						
Function	Channel	RX Frequency N/W	RX Tone/NAC	TX Frequency N/W	TX Tone/NAC	Mode
COMMAND	1	170.0625	114.8	162.1750	114.8	A
COMMAND	2	170.3125	114.8	167.8375	114.8	A
COMMAND	3	170.4500	114.8	168.1000	114.8	A
COMMAND	4	172.5375	114.8	163.5500	114.8	A
TACTICAL	6	168.0500	114.8	168.0500	114.8	A
AIR TO GROUND	15	168.1375		168.1375		A
9. Prepared By (Resource Unit Leader)			Approved By (Planning Section Chief)		Date	Time
JILL JOHNSON			MARGE HUTCHINSON		09/01/2021	2000

Division/Group Assignment List (ICS 204 WF)
Controlled Unclassified Information//Basic

1. Incident Name:				3.		
WALKER CREEK & CHICKADEE CREEK				Branch: WALKER	Division/Group A/F	
2. Operational Period: DAY						
Date/Time From: 09/02/2021 0600 THU		Date/Time To: 09/02/2021 1800 THU				
4. Operations Personnel						
OPERATIONS CHIEF		AARON ROWE JEROMY WILSON (T); MIKE DAVIS (T)		BRANCH DIRECTOR		JERRAN FLINDERS
SAFETY OFFICER		TROY CORN; JACK CATES		DIVISION/GROUP SUPERVISOR		JASON EMHOFF
5. Resources Assigned this Period						
Strike Team / Task Force / Resource Designator	LWD	Leader	Number Persons	Drop Off PT./Time	Pick Up PT./Time	
E-1S DOZ3 JONES LOGGING	09/11	JASON JONES	2	DP-354/0600	DP-354/1800	
E-356 AMR AMBU 3 (ALS)	09/14	NATE GATES	2	DP-354/0600	DP-354/1800	
O-393 EMPF	09/06	ROSS BYRD	1	DP-354/0600	DP-354/1800	
O-159 EMTF	09/03	HANS JOHNSEN	1	DP-354/0600	DP-354/1800	
6. Control Operations/Work Assignments:						
TASK: Secure fire line within its existing footprint. Patrol and mop up as necessary to prevent fire escape.						
PURPOSE: Protect property and natural resources.						
END STATE: Fire is contained. Structures and private property are no longer threatened.						
7. Special Instructions:						
Backhaul all unnecessary equipment and supplies. GPS all pump locations.						
Notify READ if cultural materials are found during mop up. Leave in place, flag and GPS.						
READs (D. Pearson, M. Wilson & A. Miller) will notify DIVS when entering or leaving the division.						
8. Division/Group Communication Summary						
Function	Channel	RX Frequency N/W	RX Tone/NAC	TX Frequency N/W	TX Tone/NAC	Mode
COMMAND	1	170.0625	114.8	162.1750	114.8	A
COMMAND	2	170.3125	114.8	167.8375	114.8	A
COMMAND	3	170.4500	114.8	168.1000	114.8	A
COMMAND	4	172.5375	114.8	163.5500	114.8	A
TACTICAL	6	168.0500	114.8	168.0500	114.8	A
AIR TO GROUND	15	168.1375		168.1375		A
9. Prepared By (Resource Unit Leader)			Approved By (Planning Section Chief)		Date	Time
JILL JOHNSON			MARGE HUTCHINSON		09/01/2021	2000

Division/Group Assignment List (ICS 204 WF)
Controlled Unclassified Information//Basic

1. Incident Name:				3.		
WALKER CREEK & CHICKADEE CREEK				Branch: WALKER	Division/Group H	
2. Operational Period: DAY						
Date/Time From: 09/02/2021 0600 THU		Date/Time To: 09/02/2021 1800 THU				
4. Operations Personnel						
OPERATIONS CHIEF		AARON ROWE JEROMY WILSON (T); MIKE DAVIS (T)		BRANCH DIRECTOR		JERRAN FLINDERS
SAFETY OFFICER		TROY CORN; JACK CATES		DIVISION/GROUP SUPERVISOR		MATT KENNEDY
5. Resources Assigned this Period						
Strike Team / Task Force / Resource Designator	LWD	Leader	Number Persons	Drop Off PT./Time	Pick Up PT./Time	
O-436 SOF2	09/13	TAIJA CORSO	1	DP-354/0600	DP-354/1800	
O-450 SOF2 (T)	09/02	PHIL GRAHAM	1	DP-354/0600	DP-354/1800	
O-342 TFLD	09/05	JEFF MEADOWS	1	DP-354/0600	DP-354/1800	
O-351 HEQB (T)	09/05	JADE DRAUSE	1	DP-354/0600	DP-354/1800	
C-68 HC2 SZ FORESTRY	09/07	RICHARD FULLERTON	20	DP-354/0600	DP-354/1800	
C-82 HC2 NORTH REFORESTATION CO	09/09	JOSE RINCON	20	DP-354/0600	DP-354/1800	
C- HC2I TONASKET CR 93 (LOAN)			16	DP-354/0600	DP-354/1800	
E-6S ENG6 WORK HORSE	09/07	TYE STRATIT	2	DP-354/0600	DP-354/1800	
E-129 ENG6 TONASKET E691 (R&R BACK 9/3)	09/01	TAYLOR ORTEG	3	DP-354/0600	DP-354/1800	
E-216 ENG3 TFD-2301	09/04	MICHAEL JOHNSON	3	DP-354/0600	DP-354/1800	
E-5011 ENG6 COLORADO E681	09/09	CHAD BAKKEN	5	DP-354/0600	DP-354/1800	
E-254 WTT2 STEVENS COUNTY T9	09/05	ZACHARY WOLF	2	DP-354/0600	DP-354/1800	
E-297 WT SILVER NICKEL	09/09	CASEY SILVERTON	1	DP-354/0600	DP-354/1800	
E-131 EXCA (MINI) TONASKET RD	09/04	DENISON/ WILLIAMS	2	DP-354/0600	DP-354/1800	
8. Division/Group Communication Summary						
Function	Channel	RX Frequency N/W	RX Tone/NAC	TX Frequency N/W	TX Tone/NAC	Mode
COMMAND	1	170.0625	114.8	162.1750	114.8	A
COMMAND	2	170.3125	114.8	167.8375	114.8	A
COMMAND	3	170.4500	114.8	168.1000	114.8	A
COMMAND	4	172.5375	114.8	163.5500	114.8	A
TACTICAL	8	168.6000	114.8	168.6000	114.8	A
AIR TO GROUND	15	168.1375		168.1375		A
9. Prepared By (Resource Unit Leader)			Approved By (Planning Section Chief)		Date	Time
JILL JOHNSON			MARGE HUTCHINSON		09/01/2021	2000

Division/Group Assignment List (ICS 204 WF)
Controlled Unclassified Information//Basic

1. Incident Name:				3.		
WALKER CREEK & CHICKADEE CREEK				Branch: WALKER	Division/Group H	
2. Operational Period: DAY						
Date/Time From: 09/02/2021 0600 THU		Date/Time To: 09/02/2021 1800 THU				
4. Operations Personnel						
OPERATIONS CHIEF		AARON ROWE JEROMY WILSON (T); MIKE DAVIS (T)		BRANCH DIRECTOR		JERRAN FLINDERS
SAFETY OFFICER		TROY CORN; JACK CATES		DIVISION/GROUP SUPERVISOR		MATT KENNEDY
5. Resources Assigned this Period						
Strike Team / Task Force / Resource Designator	LWD	Leader	Number Persons	Drop Off PT./Time	Pick Up PT./Time	
EERA SELF LOADER		BOB MCDANIEL	2	DP-354/0600	DP-354/1800	
O-245 EMPF	09/06	RICHARD SEWELL	1	DP-354/0600	DP-354/1800	
6. Control Operations/Work Assignments:						
<p>TASK: Secure fire line within its existing footprint. Patrol and mop up as necessary to prevent fire escape. PURPOSE: Protect property and natural resources. END STATE: Fire is contained. Structures and private property are no longer threatened.</p>						
7. Special Instructions:						
<p>Backhaul all unnecessary equipment and supplies. GPS all pump locations.</p> <p>Notify READ if cultural materials are found during mop up. Leave in place, flag and GPS. READs (D. Pearson, M. Wilson & A. Miller) will notify DIVS when entering or leaving the division.</p>						
8. Division/Group Communication Summary						
Function	Channel	RX Frequency N/W	RX Tone/NAC	TX Frequency N/W	TX Tone/NAC	Mode
COMMAND	1	170.0625	114.8	162.1750	114.8	A
COMMAND	2	170.3125	114.8	167.8375	114.8	A
COMMAND	3	170.4500	114.8	168.1000	114.8	A
COMMAND	4	172.5375	114.8	163.5500	114.8	A
TACTICAL	8	168.6000	114.8	168.6000	114.8	A
AIR TO GROUND	15	168.1375		168.1375		A
9. Prepared By (Resource Unit Leader)			Approved By (Planning Section Chief)		Date	Time
JILL JOHNSON			MARGE HUTCHINSON		09/01/2021	2000

Division/Group Assignment List (ICS 204 WF)
Controlled Unclassified Information//Basic

1. Incident Name:				3.		
WALKER CREEK & CHICKADEE CREEK				Branch: WALKER	Division/Group Q	
2. Operational Period: DAY						
Date/Time From: 09/02/2021 0600 THU		Date/Time To: 09/02/2021 1800 THU				
4. Operations Personnel						
OPERATIONS CHIEF		AARON ROWE JEROMY WILSON (T); MIKE DAVIS (T)		BRANCH DIRECTOR		JERRAN FLINDERS
SAFETY OFFICER		TROY CORN; JACK CATES		DIVISION/GROUP SUPERVISOR		DANIEL GLEASON JAMES DICKINSON (T)
5. Resources Assigned this Period						
Strike Team / Task Force / Resource Designator	LWD	Leader	Number Persons	Drop Off PT./Time	Pick Up PT./Time	
O-436 SOF2	09/13	TAIJA CORSO	1	DP-372/0600	DP-372/1800	
O-450 SOF2 (T)	09/02	PHIL GRAHAM	1	DP-372/0600	DP-372/1800	
O-482 HEQB (T)	09/15	ADIN SIMMONS	1	DP-372/0600	DP-372/1800	
O-483 HEQB	09/15	IAN MCLELLAND	1	DP-372/0600	DP-372/1800	
E-120 ENG6 ARCHER MOUNTAIN ENTERPRISES	09/03	JUSTUS BARTON	3	DP-372/0600	DP-372/1800	
E-365 ENG5 OSPREY WILDFIRE	09/14	JACOB LANE	3	DP-372/0600	DP-372/1800	
E-366 ENG4 RAINIER WILDFIRE	09/14	MICHAEL SUTTON	3	DP-372/0600	DP-372/1800	
E-4C FEL1 WILL LOGGING & CONSTR	09/03	BRENDON LATIMER	1	DP-372/0600	DP-372/1800	
E-31C FEL1 NORTH PINE	09/11	SCOTT HUGHES	1	DP-372/0600	DP-372/1800	
E-142 FEL1 WILL LOGGING & CONSTRUCTIO	09/09	ADAM BAKER	1	DP-372/0600	DP-372/1800	
E-237 LOG PROCESSOR WILL LOGGING	09/04	JASON SUTTON	2	DP-372/0600	DP-372/1800	
E-113 SKG2 YELLOW JACKET FIRE EQUIP	09/08	NICK BADENHOP	2	DP-372/0600	DP-372/1800	
E-139 SKG1 SOFT TRACK ATTACK	09/02	HEATHER GUTHRIE	2	DP-372/0600	DP-372/1800	
E-3C SKD1 WILL LOGGING & CONSTR	09/07	ROGER SMITH	1	DP-372/0600	DP-372/1800	
E-145 SKD1 WILL LOGGING & CONSTR	09/05	COLTEN GRONLUND	1	DP-372/0600	DP-372/1800	
E-233 SKD2 NORTH COLUMBIA ENTERPR	09/03	DALLES CRAPE	2	DP-372/0600	DP-372/1800	
8. Division/Group Communication Summary						
Function	Channel	RX Frequency N/W	RX Tone/NAC	TX Frequency N/W	TX Tone/NAC	Mode
COMMAND	1	170.0625	114.8	162.1750	114.8	A
COMMAND	2	170.3125	114.8	167.8375	114.8	A
COMMAND	3	170.4500	114.8	168.1000	114.8	A
COMMAND	4	172.5375	114.8	163.5500	114.8	A
TACTICAL	11	168.2500	114.8	168.2500	114.8	A
AIR TO GROUND	15	168.1375		168.1375		A
9. Prepared By (Resource Unit Leader)			Approved By (Planning Section Chief)		Date	Time
JILL JOHNSON			MARGE HUTCHINSON		09/01/2021	2000

Division/Group Assignment List (ICS 204 WF)
Controlled Unclassified Information//Basic

1. Incident Name:				3.		
WALKER CREEK & CHICKADEE CREEK				Branch: WALKER	Division/Group Q	
2. Operational Period: DAY						
Date/Time From: 09/02/2021 0600 THU		Date/Time To: 09/02/2021 1800 THU				
4. Operations Personnel						
OPERATIONS CHIEF		AARON ROWE JEROMY WILSON (T); MIKE DAVIS (T)		BRANCH DIRECTOR		JERRAN FLINDERS
SAFETY OFFICER		TROY CORN; JACK CATES		DIVISION/GROUP SUPERVISOR		DANIEL GLEASON JAMES DICKINSON (T)
5. Resources Assigned this Period						
Strike Team / Task Force / Resource Designator		LWD	Leader	Number Persons	Drop Off PT./Time	Pick Up PT./Time
E-234 SKD2 NORTH COLUMBIA ENTERPRISES		09/03	TOM LOTZE	2	DP-372/0600	DP-372/1800
E-277 MAST SWEDBERG CONTRACTING CORP.		09/09	STEVEN MEDDOCK	2	DP-372/0600	DP-372/1800
E-200 MAST BRUCE YOUNG LOGGING		09/07	MATT MCLAREN	2	DP-372/0600	DP-372/1800
E-272 EXCA NORTH COLUMBIA ENTERPRISES		09/07	SCOTT BUTTERFIELD	2	DP-372/0600	DP-372/1800
E-110 UTV ADVENTURE SPORT			-- UNSTAFFED --		DP-372/0600	DP-372/1800
O-221 EMPF			DAVE BRIDGES	1	DP-372/0600	DP-372/1800
6. Control Operations/Work Assignments:						
<p>TASK: Monitor fire progression and determine trigger points for the possibility of needing to take action, Evaluate based on current and predicted weather conditions considering seasonal severity. Continue to secure fire line west of the 300 road towards DIV Q/H break</p> <p>PURPOSE: Exposure and firefighter safety is minimized with all primary control features already completed.</p> <p>END STATE: Fire progression is monitored and Firing plan is prepared to hand off.</p>						
7. Special Instructions:						
<p>Backhaul all unnecessary equipment and supplies. GPS all pump locations.</p> <p>Notify READ if cultural materials are found during mop up. Leave in place, flag and GPS. READs (D. Pearson, M. Wilson & A. Miller) will notify DIVS when entering or leaving the division.</p>						
8. Division/Group Communication Summary						
Function	Channel	RX Frequency N/W	RX Tone/NAC	TX Frequency N/W	TX Tone/NAC	Mode
COMMAND	1	170.0625	114.8	162.1750	114.8	A
COMMAND	2	170.3125	114.8	167.8375	114.8	A
COMMAND	3	170.4500	114.8	168.1000	114.8	A
COMMAND	4	172.5375	114.8	163.5500	114.8	A
TACTICAL	11	168.2500	114.8	168.2500	114.8	A
AIR TO GROUND	15	168.1375		168.1375		A
9. Prepared By (Resource Unit Leader)			Approved By (Planning Section Chief)		Date	Time
JILL JOHNSON			MARGE HUTCHINSON		09/01/2021	2000

Division/Group Assignment List (ICS 204 WF)
Controlled Unclassified Information//Basic

1. Incident Name:				3.		
WALKER CREEK & CHICKADEE CREEK				Branch: WALKER	Division/Group T	
2. Operational Period: DAY						
Date/Time From: 09/02/2021 0600 THU		Date/Time To: 09/02/2021 1800 THU				
4. Operations Personnel						
OPERATIONS CHIEF		AARON ROWE JEROMY WILSON (T); MIKE DAVIS (T)		BRANCH DIRECTOR		JERRAN FLINDERS
SAFETY OFFICER		TROY CORN; JACK CATES		DIVISION/GROUP SUPERVISOR		MICHAEL JACKSON SETH JONES (T)
5. Resources Assigned this Period						
Strike Team / Task Force / Resource Designator	LWD	Leader	Number Persons	Drop Off PT./Time	Pick Up PT./Time	
O-436 SOF2	09/13	TAIJA CORSO	1	DP-372/0600	DP-372/1800	
O-450 SOF2 (T)	09/02	PHIL GRAHAM	1	DP-372/0600	DP-372/1800	
O-286 TFLD (T)	09/01	KEVIN CARLSEN	1	DP-372/0600	DP-372/1800	
O-474 TFLD	09/09	CHARLES MCGUIRE	1	DP-372/0600	DP-372/1800	
O-476 TFLD (T)	09/09	CONNOR ENGLAND	1	DP-372/0600	DP-372/1800	
O-495 HEQB	09/14	TOM SHEDD	1	DP-372/0600	DP-372/1800	
O-23 FMOD BAILEY LOGGING	09/03	TAYLOR EVANS	2	DP-372/0600	DP-372/1800	
C-88 HC2 I-S-A SERVICES	09/15	LORENA SILVA	20	DP-372/0600	DP-372/1800	
C-89 HC2 R & R CONTRACTING	09/15	CRISTOBAL ROCHA	20	DP-372/0600	DP-372/1800	
E-19 ENG5 LL MEADOW WILDFIRE	09/03	DAMIAN RAMON	3	DP-372/0600	DP-372/1800	
E-115 ENG3 OUTBACK FIREFIGHTING	09/06	DAMON ANDERSON	3	DP-372/0600	DP-372/1800	
E-116 ENG6 TORCH FIRE AND SECURITY	09/08	TRINITY KRIVANEC	3	DP-372/0600	DP-372/1800	
E-217 ENG6 AXCESS FIRE	09/04	KEN VIRDEN	3	DP-372/0600	DP-372/1800	
E-220 ENG4 OWSLEY CANYON ENG CO	09/02	DANNY CALLAHAN	3	DP-372/0600	DP-372/1800	
E-338 ENG6 AEGIS LOGISTICS	09/11	ROY VARNEY	3	DP-372/0600	DP-372/1800	
E-339 ENG6 BLACK PINE CONTRACTING	09/12	JOE BEATTY	3	DP-372/0600	DP-372/1800	
8. Division/Group Communication Summary						
Function	Channel	RX Frequency N/W	RX Tone/NAC	TX Frequency N/W	TX Tone/NAC	Mode
COMMAND	1	170.0625	114.8	162.1750	114.8	A
COMMAND	2	170.3125	114.8	167.8375	114.8	A
COMMAND	3	170.4500	114.8	168.1000	114.8	A
COMMAND	4	172.5375	114.8	163.5500	114.8	A
TACTICAL	9	166.7250	114.8	166.7250	114.8	A
AIR TO GROUND	15	168.1375		168.1375		A
9. Prepared By (Resource Unit Leader)		Approved By (Planning Section Chief)		Date	Time	
JILL JOHNSON		MARGE HUTCHINSON		09/01/2021	2000	

Division/Group Assignment List (ICS 204 WF)
Controlled Unclassified Information//Basic

1. Incident Name:				3.		
WALKER CREEK & CHICKADEE CREEK				Branch: WALKER	Division/Group T	
2. Operational Period: DAY						
Date/Time From: 09/02/2021 0600 THU		Date/Time To: 09/02/2021 1800 THU				
4. Operations Personnel						
OPERATIONS CHIEF		AARON ROWE JEROMY WILSON (T); MIKE DAVIS (T)		BRANCH DIRECTOR		JERRAN FLINDERS
SAFETY OFFICER		TROY CORN; JACK CATES		DIVISION/GROUP SUPERVISOR		MICHAEL JACKSON SETH JONES (T)
5. Resources Assigned this Period						
Strike Team / Task Force / Resource Designator		LWD	Leader	Number Persons	Drop Off PT./Time	Pick Up PT./Time
E-340 ENG6 STCN 11 - B11-14		09/12	ZAK BEER	3	DP-372/0600	DP-372/1800
E-357 ENG5 DNR AR 7403		09/15	DANIEL JAMES STRALSER	4	DP-372/0600	DP-372/1800
E-23 WTS1 OROVILLE TRANSIT MIX		09/12	GORDON WOOLEY	3	DP-372/0600	DP-372/1800
E-156 WTS2 H & H ENTERPRISES		09/03	MARK ANDERSON	1		
E-349 WTS2 SC RIVER LMS		09/13	TIM SCIVER	1	DP-372/0600	DP-372/1800
E-351 WTS2 TIMBERLINE TRUCKING		09/12	CALVIN GARRISON	1	DP-372/0600	DP-372/1800
E-20C DOZ3 SILVER-NICKEL LOGGING		09/10	MATT CLOUGH	2	DP-372/0600	DP-372/1800
E-80 DOZ3 MCMILLAN CONSTRUCTION		09/06	DOUG MCMILLAN	2	DP-372/0600	DP-372/1800
E-181 DOZ3 MC NALL CONSTRUCTION		09/08	ADAM MCNALL	2	DP-372/0600	DP-372/1800
E-114 SKDS SOFT TRACK ATTACK		09/13	JARED COVEY	2	DP-372/0600	DP-372/1800
E-334 SKG2 PRICE EXCAVATION		09/13		2	DP-372/0600	DP-372/1800
E-335 SKG2 ALVORD FIRE SUPPRESSION		09/13	RANDY HOGLUND	1	DP-372/0600	DP-372/1800
E-199 MAST EAGLE CAP		09/07	BEN FISCHER	2	DP-372/0600	DP-372/1800
O-396.1 EMPF		09/04	MACK MARIN	1	DP-372/0600	DP-372/1800
8. Division/Group Communication Summary						
Function	Channel	RX Frequency N/W	RX Tone/NAC	TX Frequency N/W	TX Tone/NAC	Mode
COMMAND	1	170.0625	114.8	162.1750	114.8	A
COMMAND	2	170.3125	114.8	167.8375	114.8	A
COMMAND	3	170.4500	114.8	168.1000	114.8	A
COMMAND	4	172.5375	114.8	163.5500	114.8	A
TACTICAL	9	166.7250	114.8	166.7250	114.8	A
AIR TO GROUND	15	168.1375		168.1375		A
9. Prepared By (Resource Unit Leader)			Approved By (Planning Section Chief)		Date	Time
JILL JOHNSON			MARGE HUTCHINSON		09/01/2021	2000

Division/Group Assignment List (ICS 204 WF)
Controlled Unclassified Information//Basic

1. Incident Name:				3.		
WALKER CREEK & CHICKADEE CREEK				Branch: WALKER	Division/Group T	
2. Operational Period: DAY						
Date/Time From: 09/02/2021 0600 THU		Date/Time To: 09/02/2021 1800 THU				
4. Operations Personnel						
OPERATIONS CHIEF		AARON ROWE JEROMY WILSON (T); MIKE DAVIS (T)		BRANCH DIRECTOR		JERRAN FLINDERS
SAFETY OFFICER		TROY CORN; JACK CATES		DIVISION/GROUP SUPERVISOR		MICHAEL JACKSON SETH JONES (T)
5. Resources Assigned this Period						
Strike Team / Task Force / Resource Designator		LWD	Leader	Number Persons	Drop Off PT./Time	Pick Up PT./Time
6. Control Operations/Work Assignments:						
<p>TASK: Secure fire line within its existing footprint. Patrol and mop up as necessary to prevent fire escape. PURPOSE: Protect property and natural resources. END STATE: Fire is contained. Structures and private property are no longer threatened.</p>						
7. Special Instructions:						
<p>Backhaul all unnecessary equipment and supplies. GPS all pump locations.</p> <p>Notify READ if cultural materials are found during mop up. Leave in place, flag and GPS. READs (D. Pearson, M. Wilson & A. Miller) will notify DIVS when entering or leaving the division.</p>						
8. Division/Group Communication Summary						
Function	Channel	RX Frequency N/W	RX Tone/NAC	TX Frequency N/W	TX Tone/NAC	Mode
COMMAND	1	170.0625	114.8	162.1750	114.8	A
COMMAND	2	170.3125	114.8	167.8375	114.8	A
COMMAND	3	170.4500	114.8	168.1000	114.8	A
COMMAND	4	172.5375	114.8	163.5500	114.8	A
TACTICAL	9	166.7250	114.8	166.7250	114.8	A
AIR TO GROUND	15	168.1375		168.1375		A
9. Prepared By (Resource Unit Leader)			Approved By (Planning Section Chief)		Date	Time
JILL JOHNSON			MARGE HUTCHINSON		09/01/2021	2000

Division/Group Assignment List (ICS 204 WF)
Controlled Unclassified Information//Basic

1. Incident Name:				3.		
WALKER CREEK & CHICKADEE CREEK				Branch:	Division/Group C	
2. Operational Period: DAY						
Date/Time From: 09/02/2021 0600 THU		Date/Time To: 09/02/2021 1800 THU				
4. Operations Personnel						
OPERATIONS CHIEF		AARON ROWE JEROMY WILSON (T); MIKE DAVIS (T)		BRANCH DIRECTOR		
SAFETY OFFICER		TROY CORN; JACK CATES		DIVISION/GROUP SUPERVISOR		BOB HINDS SUSAN GREENLEAF (T)
5. Resources Assigned this Period						
Strike Team / Task Force / Resource Designator	LWD	Leader	Number Persons	Drop Off PT./Time	Pick Up PT./Time	
O-465 SOF2	09/13	LEA WOFFORD	1	SPEARS RANCH/0600	SPEARS RANCH/1800	
O-294 TFLD	09/02	SHANNON MOORE	1	SPEARS RANCH/0600	SPEARS RANCH/1800	
O-377 TFLD	09/07	STEPHEN DECOOK	1	SPEARS RANCH/0600	SPEARS RANCH/1800	
O-423 TFLD (T)	09/09	KYLE BUCKMILLER	1	SPEARS RANCH/0600	SPEARS RANCH/1800	
O-457 HEQB (T)	09/10	AARON NELSON	1	SPEARS RANCH/0600	SPEARS RANCH/1800	
O-9002 HEQB (LOAN)	09/08	SKYLER GOODRICH	1	SPEARS RANCH/0600	SPEARS RANCH/1800	
O-9006 HEQB (LOAN)	09/08	MATT SMITH	1	SPEARS RANCH/0600	SPEARS RANCH/1800	
O-247 FMOD BROTHERS FIRE LLC	09/05	TOM HOFFMAN	2	SPEARS RANCH/0600	SPEARS RANCH/1800	
C-9003 HC2I HIGHLANDS (LOAN)		SETH SCHERTENLEIB	20	SPEARS RANCH/0600	SPEARS RANCH/1800	
E-255 ENG4 WILD FIRE SERVICES	09/07	STEVE KURVAINK	3	SPEARS RANCH/0600	SPEARS RANCH/1800	
E-257 ENG5 METHOW RIVER WILD FIRE	09/07	ALEX WHITMAN	3	SPEARS RANCH/0600	SPEARS RANCH/1800	
E-336 ENG5 KALISPEL BRUSH-1	09/11	RYAN MARTIN	3	SPEARS RANCH/0600	SPEARS RANCH/1800	
E-337 ENG6 THE GENERAL	09/10	PAUL ANDERSON	2	SPEARS RANCH/0600	SPEARS RANCH/1800	
E- ENG5 DNR ENG (LOAN)				SPEARS RANCH/0600	SPEARS RANCH/1800	
E- ENG5 DNR ENG (LOAN)				SPEARS RANCH/0600	SPEARS RANCH/1800	
8. Division/Group Communication Summary						
Function	Channel	RX Frequency N/W	RX Tone/NAC	TX Frequency N/W	TX Tone/NAC	Mode
COMMAND	1	170.0625	114.8	162.1750	114.8	A
COMMAND	2	170.3125	114.8	167.8375	114.8	A
COMMAND	3	170.4500	114.8	168.1000	114.8	A
COMMAND	4	172.5375	114.8	163.5500	114.8	A
TACTICAL	10	166.7750	114.8	166.7750	114.8	A
AIR TO GROUND	13	170.2625		170.2625		A
9. Prepared By (Resource Unit Leader)			Approved By (Planning Section Chief)		Date	Time
JILL JOHNSON			MARGE HUTCHINSON		09/01/2021	2000

Division/Group Assignment List (ICS 204 WF)
Controlled Unclassified Information//Basic

1. Incident Name:				3.		
WALKER CREEK & CHICKADEE CREEK				Branch:	Division/Group C	
2. Operational Period: DAY						
Date/Time From: 09/02/2021 0600 THU		Date/Time To: 09/02/2021 1800 THU				
4. Operations Personnel						
OPERATIONS CHIEF		AARON ROWE JEROMY WILSON (T); MIKE DAVIS (T)		BRANCH DIRECTOR		
SAFETY OFFICER		TROY CORN; JACK CATES		DIVISION/GROUP SUPERVISOR		BOB HINDS SUSAN GREENLEAF (T)
5. Resources Assigned this Period						
Strike Team / Task Force / Resource Designator		LWD	Leader	Number Persons	Drop Off PT./Time	Pick Up PT./Time
E- ENG5 DNR ENG (LOAN)					SPEARS RANCH/0600	SPEARS RANCH/1800
E-16C WTS2 S PEND OREILLE T33		09/08	PAUL HAA	1	SPEARS RANCH/0600	SPEARS RANCH/1800
E-136 WTS2 OVERWATCH		09/08	ANDY ROMERO	1	SPEARS RANCH/0600	SPEARS RANCH/1800
E-350 WTS2 JOE PEONE LOGGING		09/12	DUANE HALL	1	SPEARS RANCH/0600	SPEARS RANCH/1800
E-352 WTS2 H & H FIRE CONTRACTING		09/12	TOM FERRO	1	SPEARS RANCH/0600	SPEARS RANCH/1800
E-12C DOZ2 KENNETH & DIANE SASSE		09/07	BURT SASSE	2	SPEARS RANCH/0600	SPEARS RANCH/1800
E-201 DOZ3 HAVILLAH LOGGING CO		09/13	DAVID BURTON	1	SPEARS RANCH/0600	SPEARS RANCH/1800
E-14C EXCA WILL LOGGING & CONSTR		09/04	GARY WILLER SR	1	SPEARS RANCH/0600	SPEARS RANCH/1800
E-15C EXCA GASHO & GASHO		09/12	JUBLE MILLER	2	SPEARS RANCH/0600	SPEARS RANCH/1800
E-26 SKG1 WYEAST FORESTRY MANAGEMENT		09/14	BOYD GOLDFINCH	2	SPEARS RANCH/0600	SPEARS RANCH/1800
E-138 SKG1 SOFT TRACK ATTACK		09/04	JOSH COVEY	2	SPEARS RANCH/0600	SPEARS RANCH/1800
E-18C SKD2 RIDGELINE FORESTRY		09/13	MICHAEL GOETZ	2	SPEARS RANCH/0600	SPEARS RANCH/1800
E-21C SKD2 DOUBLE A LOGGING 1		09/08	SHAWN NIGG	1	SPEARS RANCH/0600	SPEARS RANCH/1800
E-205 SKD2 HAVILLAH LOGGING		09/10	BRANDON SUTTON	1	SPEARS RANCH/0600	SPEARS RANCH/1800
E-204 MAST HAVILLAH LOGGIN		09/11	TIM KERSHNER	1	SPEARS RANCH/0600	SPEARS RANCH/1800
8. Division/Group Communication Summary						
Function	Channel	RX Frequency N/W	RX Tone/NAC	TX Frequency N/W	TX Tone/NAC	Mode
COMMAND	1	170.0625	114.8	162.1750	114.8	A
COMMAND	2	170.3125	114.8	167.8375	114.8	A
COMMAND	3	170.4500	114.8	168.1000	114.8	A
COMMAND	4	172.5375	114.8	163.5500	114.8	A
TACTICAL	10	166.7750	114.8	166.7750	114.8	A
AIR TO GROUND	13	170.2625		170.2625		A
9. Prepared By (Resource Unit Leader)			Approved By (Planning Section Chief)		Date	Time
JILL JOHNSON			MARGE HUTCHINSON		09/01/2021	2000

Division/Group Assignment List (ICS 204 WF)
Controlled Unclassified Information//Basic

1. Incident Name:				3.		
WALKER CREEK & CHICKADEE CREEK				Branch:	Division/Group C	
2. Operational Period: DAY						
Date/Time From: 09/02/2021 0600 THU		Date/Time To: 09/02/2021 1800 THU				
4. Operations Personnel						
OPERATIONS CHIEF		AARON ROWE JEROMY WILSON (T); MIKE DAVIS (T)		BRANCH DIRECTOR		
SAFETY OFFICER		TROY CORN; JACK CATES		DIVISION/GROUP SUPERVISOR		BOB HINDS SUSAN GREENLEAF (T)
5. Resources Assigned this Period						
Strike Team / Task Force / Resource Designator	LWD	Leader	Number Persons	Drop Off PT./Time	Pick Up PT./Time	
E-353 LOG PROCESSOR RIDGELINE FORESTRY	09/11	BOB KOEPL	2	SPEARS RANCH/0600	SPEARS RANCH/1800	
E-368 LOG LOADER RIDGELINE FORESTRY	09/10	YANCEY EPPERSON	1	SPEARS RANCH/0600	SPEARS RANCH/1800	
E-55 AMBU PEND OREILLE AMBU 2 (ALS)	09/11	JOHNNY SYLVESTER	2	SPEARS RANCH/0600	SPEARS RANCH/1800	
O-273 EMPF	09/06	KEVIN SMITH	1	SPEARS RANCH/0600	SPEARS RANCH/1800	
6. Control Operations/Work Assignments:						
TASK: Secure fire line within its existing footprint. Patrol and mop up as necessary to prevent fire escape.						
PURPOSE: Protect property and natural resources.						
END STATE: Fire is contained. Structures and private property are no longer threatened.						
7. Special Instructions:						
Backhaul all unnecessary equipment and supplies. GPS all pump locations.						
8. Division/Group Communication Summary						
Function	Channel	RX Frequency N/W	RX Tone/NAC	TX Frequency N/W	TX Tone/NAC	Mode
COMMAND	1	170.0625	114.8	162.1750	114.8	A
COMMAND	2	170.3125	114.8	167.8375	114.8	A
COMMAND	3	170.4500	114.8	168.1000	114.8	A
COMMAND	4	172.5375	114.8	163.5500	114.8	A
TACTICAL	10	166.7750	114.8	166.7750	114.8	A
AIR TO GROUND	13	170.2625		170.2625		A
9. Prepared By (Resource Unit Leader)			Approved By (Planning Section Chief)		Date	Time
JILL JOHNSON			MARGE HUTCHINSON		09/01/2021	2000

Division/Group Assignment List (ICS 204 WF)
Controlled Unclassified Information//Basic

1. Incident Name:				3.		
WALKER CREEK & CHICKADEE CREEK				Branch:	Division/Group K/O	
2. Operational Period: DAY						
Date/Time From: 09/02/2021 0600 THU		Date/Time To: 09/02/2021 1800 THU				
4. Operations Personnel						
OPERATIONS CHIEF		AARON ROWE JEROMY WILSON (T); MIKE DAVIS (T)		BRANCH DIRECTOR		
SAFETY OFFICER		TROY CORN; JACK CATES		DIVISION/GROUP SUPERVISOR		CHET DIERINGER SAM STEINSHOUER (T)
5. Resources Assigned this Period						
Strike Team / Task Force / Resource Designator	LWD	Leader	Number Persons	Drop Off PT./Time	Pick Up PT./Time	
O-465 SOF2	09/13	LEA WOFFORD	1	SPEARS RANCH/0600	SPEARS RANCH/1800	
O-359 TFLD (T)	09/06	RYAN ROMERO	1	SPEARS RANCH/0600	SPEARS RANCH/1800	
O-376 TFLD	09/05	BENNY MENDOZA	1	SPEARS RANCH/0600	SPEARS RANCH/1800	
O-490 HEQB (T)	09/15	ERIC WEINKE	1	SPEARS RANCH/0600	SPEARS RANCH/1800	
O-432 STEQ (T)	09/09	DAVID MORRILL	1	SPEARS RANCH/0600	SPEARS RANCH/1800	
O-397 FOBS	09/02	ANDREW PARKER	1	SPEARS RANCH/0600	SPEARS RANCH/1800	
C-71 HC2 TORRES CONTRACTING CREW-11	09/08	EMILIO MELGAREJO	20	SPEARS RANCH/0600	SPEARS RANCH/1800	
C-81 HC2 LAVA RIVER FORESTRY 4	09/09	JOSH MARTINEZ	20	SPEARS RANCH/0600	SPEARS RANCH/1800	
E- ENG5 DNR ENG 7103 (LOAN)			3	SPEARS RANCH/0600	SPEARS RANCH/1800	
E- ENG5 DNR ENG 7108 (LOAN)			3	SPEARS RANCH/0600	SPEARS RANCH/1800	
E- ENG5 DNR ENG 7111 (LOAN)			3	SPEARS RANCH/0600	SPEARS RANCH/1800	
E- ENG5 DNR ENG 7202 (LOAN)			3	SPEARS RANCH/0600	SPEARS RANCH/1800	
E- ENG5 DNR ENG 7203 (LOAN)			3	SPEARS RANCH/0600	SPEARS RANCH/1800	
E-6C WTS2 TOLLEFSON CONSTR	09/06	EVAN BEVIER	1	SPEARS RANCH/0600	SPEARS RANCH/1800	
E-22 WTS2 RAINS CONTRACTING	09/11	RON STODDARD	1	SPEARS RANCH/0600	SPEARS RANCH/1800	
8. Division/Group Communication Summary						
Function	Channel	RX Frequency N/W	RX Tone/NAC	TX Frequency N/W	TX Tone/NAC	Mode
COMMAND	1	170.0625	114.8	162.1750	114.8	A
COMMAND	2	170.3125	114.8	167.8375	114.8	A
COMMAND	3	170.4500	114.8	168.1000	114.8	A
COMMAND	4	172.5375	114.8	163.5500	114.8	A
TACTICAL	7	168.2000	114.8	168.2000	114.8	A
AIR TO GROUND	13	170.2625		170.2625		A
9. Prepared By (Resource Unit Leader)			Approved By (Planning Section Chief)		Date	Time
JILL JOHNSON			MARGE HUTCHINSON		09/01/2021	2000

Division/Group Assignment List (ICS 204 WF)
Controlled Unclassified Information//Basic

1. Incident Name:				3.		
WALKER CREEK & CHICKADEE CREEK				Branch:	Division/Group K/O	
2. Operational Period: DAY						
Date/Time From: 09/02/2021 0600 THU		Date/Time To: 09/02/2021 1800 THU				
4. Operations Personnel						
OPERATIONS CHIEF		AARON ROWE JEROMY WILSON (T); MIKE DAVIS (T)		BRANCH DIRECTOR		
SAFETY OFFICER		TROY CORN; JACK CATES		DIVISION/GROUP SUPERVISOR		CHET DIERINGER SAM STEINSHOUER (T)
5. Resources Assigned this Period						
Strike Team / Task Force / Resource Designator	LWD	Leader	Number Persons	Drop Off PT./Time	Pick Up PT./Time	
E-176 WTS2 BTNG WILDFIRE	09/13	GEORGE THOMAS	1	SPEARS RANCH/0600	SPEARS RANCH/1800	
E-177 WTS1 DOUBLE A LOGGING	09/07	TONY BROWN	1	SPEARS RANCH/0600	SPEARS RANCH/1800	
E-26C DOZ3 DOUBLE A LOGGING	09/13	TYLER ACORD	2	SPEARS RANCH/0600	SPEARS RANCH/1800	
E-25C EXCA DOUBLE A LOGGING	09/09	TOM ACORD	1	SPEARS RANCH/0600	SPEARS RANCH/1800	
E-197 SKG3 TUNK CREEK LLC	09/04	DYLAN GREEN	2	SPEARS RANCH/0600	SPEARS RANCH/1800	
E-22C SKD2 DOUBLE A LOGGING	09/10	BRYAN ACORD	1	SPEARS RANCH/0600	SPEARS RANCH/1800	
E-112 SKDS SOFTTRACK ATTACK	09/09	PATRICK PRICE	2	SPEARS RANCH/0600	SPEARS RANCH/1800	
E-140 SKDS SPENCER LOGGING LLC	09/06	COLE SPENCER	2	SPEARS RANCH/0600	SPEARS RANCH/1800	
E-348 SKD1 TURLEY LOGGING	09/12	CODY HUBBARD	2	SPEARS RANCH/0600	SPEARS RANCH/1800	
E-354 LOG DOUBLE A LOG LOADER	09/11	ROY ACORD	2	SPEARS RANCH/0600	SPEARS RANCH/1800	
E-355 LOG PROCESSOR DOUBLE A	09/11	JERAMIAH BOARDWELL	2	SPEARS RANCH/0600	SPEARS RANCH/1800	
E-108 UTV ADVENTURE SPORT		-- UNSTAFFED --		SPEARS RANCH/0600	SPEARS RANCH/1800	
8. Division/Group Communication Summary						
Function	Channel	RX Frequency N/W	RX Tone/NAC	TX Frequency N/W	TX Tone/NAC	Mode
COMMAND	1	170.0625	114.8	162.1750	114.8	A
COMMAND	2	170.3125	114.8	167.8375	114.8	A
COMMAND	3	170.4500	114.8	168.1000	114.8	A
COMMAND	4	172.5375	114.8	163.5500	114.8	A
TACTICAL	7	168.2000	114.8	168.2000	114.8	A
AIR TO GROUND	13	170.2625		170.2625		A
9. Prepared By (Resource Unit Leader)			Approved By (Planning Section Chief)		Date	Time
JILL JOHNSON			MARGE HUTCHINSON		09/01/2021	2000

Division/Group Assignment List (ICS 204 WF)
Controlled Unclassified Information//Basic

1. Incident Name:			3.			
WALKER CREEK & CHICKADEE CREEK			Branch:		Division/Group	
2. Operational Period: DAY					K/O	
Date/Time From: 09/02/2021 0600 THU		Date/Time To: 09/02/2021 1800 THU				
4. Operations Personnel						
OPERATIONS CHIEF		AARON ROWE JEROMY WILSON (T); MIKE DAVIS (T)		BRANCH DIRECTOR		
SAFETY OFFICER		TROY CORN; JACK CATES		DIVISION/GROUP SUPERVISOR		CHET DIERINGER SAM STEINSHOUER (T)
5. Resources Assigned this Period						
Strike Team / Task Force / Resource Designator		LWD	Leader	Number Persons	Drop Off PT./Time	Pick Up PT./Time
O-220 EMTF		09/04	RYAN SATCHER	1	SPEARS RANCH/0600	SPEARS RANCH/1800
O-272 EMPF		09/03	MICHAEL COOPER	1	SPEARS RANCH/0600	SPEARS RANCH/1800
O-461 EMPF		09/05	KYLE MEADE	1	SPEARS RANCH/0600	SPEARS RANCH/1800
6. Control Operations/Work Assignments:						
TASK: Secure fire line within its existing footprint. Patrol and mop up as necessary to prevent fire escape. PURPOSE: Protect property and natural resources. END STATE: Fire is contained. Structures and private property are no longer threatened.						
7. Special Instructions:						
Backhaul all unnecessary equipment and supplies. GPS all pump locations.						
8. Division/Group Communication Summary						
Function	Channel	RX Frequency N/W	RX Tone/NAC	TX Frequency N/W	TX Tone/NAC	Mode
COMMAND	1	170.0625	114.8	162.1750	114.8	A
COMMAND	2	170.3125	114.8	167.8375	114.8	A
COMMAND	3	170.4500	114.8	168.1000	114.8	A
COMMAND	4	172.5375	114.8	163.5500	114.8	A
TACTICAL	7	168.2000	114.8	168.2000	114.8	A
AIR TO GROUND	13	170.2625		170.2625		A
9. Prepared By (Resource Unit Leader)			Approved By (Planning Section Chief)		Date	Time
JILL JOHNSON			MARGE HUTCHINSON		09/01/2021	2000

DNR IMT Mop UP STANDARDS

Department of Natural Resources
Walker Creek WA-NES-2021-2245
Chickadee Creek WA-NES-2021-2310

These standards may be adjusted and modified as the incident progresses, but are intended to give the IMT direction for planning. Mop-up specifications apply only to DNR protected lands at this time. Rehab standards will be developed based on landowner objectives once the incident is controlled. Other agencies will provide specific direction for their jurisdictions.

Mop-Up Specifications

Always consider over-head hazards prior to putting fire fighters in harm's way for mop up. Mitigate hazards and exposure as needed.

Achieve 100% mop-up along and inside the fire perimeter to a distance that is adequate to ensure the perimeter is secure to prevent the fire from escaping across existing containment lines.

To reduce hazards to firefighters during final mop-up, fall snags that pose "imminent" danger along all open roads within the fire perimeter.

Known spot fires outside the control lines will be 100% mopped up where appropriate to do so, a route to them will be flagged, and the perimeter of spots mapped in GIS.

Mop-up of partially burned areas further inside the lines will be determined on a case-by-case basis.

For structures and sensitive resources within the interior of the fire line, mop-up to a level to ensure that there will be no future effects from the fire.

As mop-up specifications are met on a Division, Operations will develop a plan for the resources and equipment to be left in place that may be required for future contingency actions.

Mop-up will be verified by aerial infrared equipment and/or gridded prior to fire turn back to Land Manager or Protecting Agency.

Notify Agency Representative if a cultural site is found during mop-up.

DNR Agency Representative Name: Brett Walker 509-680-4029

AIR OPERATIONS SUMMARY

Controlled Unclassified Information//Basic

PREPARED BY: Greg Reser AOB (t)

PREPARED DATE/TIME: 9/1/2021 1900

1. INCIDENT NAME: Walker Cr. /Chickadee Cr.		2. OPERATIONAL PERIOD DATE: 9/2/21 START TIME: 0800 END TIME: 2000 SUNRISE: 0616 SUNSET: 1938 Pumpkin 2008			
3. REMARKS (Safety Notes, Hazards, Air Operations Special Equipment, etc.):				4. Ready Alert aircraft: Order ALS air ambulance (Lifeflight) through NEWICC Dispatch. Closest ALS helicopters are out of Brewster, WA with a 25 min flight time to the Walker fire. <u>Special remarks:</u> Wenatchee Short Haul 3JR at Lake Chelan, WA Airport. Response time roughly 45min to incident. Order thru AOB. Review Military Training Route activity and status each morning prior to missions. <u>Aviation Support Equipment:</u> WTS2 E-227 @ Omak Helibase Helibase Support Trailer E-209 @ Omak Helibase <u>Email cost to:</u> WalkerSpur.Aviation@gmail.com	
5. Helibase location Omak (OMK) 48-27.864617N 119-31.083250W Elev: 1,304' Base Phone: 360-489-7654 Unicom: OMK: 122.8 Tonasket W01: 122.9		6. TFR information Walker 1/7944 7NM SFC-9500FT Active: 0700-2100 Chickadee 1/7942 5NM SFC-9500FT Active: 0700-2100	7. FIXED WING		SEATS/Fireboss: Available out of Omak. Order through NEWICC. ATGS Platform: Order as needed through NEWICC.
8. PERSONNEL		9. FREQUENCIES	FM		AM
AOBD (t)- Greg Reser		307-350-2202	A/G Walker Pri		168.1375
HEBM (t)- Dylan Kane		609-651-7431	A/G Walker Sec	169.5625	
			A/G Chickadee Pri	170.2625	
			TFR 1/9445 Walker	118.125	
			A/A Walker Rotor	126.3500	
			TFR 1/9449 Chickadee	118.775	
NE Washington Dispatch (NEWICC)		509-685-6900	A/A Chickadee Rotor	126.6250	
			A/G Ignitions Discreet	167.8375	
Colville UAO Ben Renfro		541-589-0452	DNR Flight Follow	151.3475 Tx(136.5)	
			Air Guard	168.6250 Tx(110.9)	

10. Helicopters	TY	MAKE/MODEL	BASE	START	AVAIL	REMARKS
N24CK (A-183) / Gelhausen	1	S-61A	OMK	0800	0830	EU / Tanked
N7CU (A-174) / Hogue	1	CH-47D	OMK	0800	0830	EU / Bucket
N12HX (A-204) / Carpenter	3	Bell 407	OMK	0800	0830	EU / HMGB +9

Mission Requests:

Air Attack: Requested through NEWICC as needed.

Lead Plane/Airtankers: Requested through NEWICC as needed.

Helicopters: Requested through Omak Helibase.

Approved By: Mike Davis AOB

INCIDENT RADIO COMMUNICATIONS PLAN (ICS 205)

Controlled Unclassified Information//Basic

1. Incident Name:	2. Date/Time Prepared:	3. Operational Period: DAY	
WALKER CREEK & CHICKADEE CREEK	Date: 09/01/2021 Time: 2000	Date/Time From: 09/02/2021 0600 THU	Date/Time To: 09/02/2021 1800 THU

4. Basic Radio Channel Use:

Zone Group	Ch #	Function	Channel Name/Trunked Radio System Talkgroup	Assignment	RX Freq	RX Tone/NAC	TX Freq	TX Tone/NAC	Mode (A,D, or M)	Remarks
	1	COMMAND	CMD1	ALL RESOURCES	170.0625	114.8	162.1750	114.8	A	LINKED TO CMD2, CMD3 & CMD4
	2	COMMAND	CMD2	ALL RESOURCES	170.3125	114.8	167.8375	114.8	A	LINKED TO CMD1, CMD 3 & CMD4
	3	COMMAND	CMD3	ALL RESOURCES	170.4500	114.8	168.1000	114.8	A	LINKED TO CMD1, CMD2 & CMD4
	4	COMMAND	CMD 4	ALL RESOURCES	172.5375	114.8	163.5500	114.8	A	LINKED TO CMD1, CMD2 & CMD3
	5	COMMAND	DNR TON	ALL RESOURCES	159.3675	118.8	151.2575	156.7	A	DNR TONASKET DISPATCH
	6	TACTICAL	TAC 6	DIV A / F	168.0500	114.8	168.0500	114.8	A	NIFC TAC
	7	TACTICAL	TAC 7	DIV K / O	168.2000	114.8	168.2000	114.8	A	NIFC TAC
	8	TACTICAL	TAC 8	DIV H	168.6000	114.8	168.6000	114.8	A	NIFC TAC
	9	TACTICAL	TAC 9	DIV T	166.7250	114.8	166.7250	114.8	A	NIFC TAC
	10	TACTICAL	TAC 10	DIV C	166.7750	114.8	166.7750	114.8	A	NIFC TAC
	11	TACTICAL	TAC 11	DIV Q	168.2500	114.8	168.2500	114.8	A	NIFC TAC
	12	TACTICAL	RED NET	ALL RESOURCES	153.8300		153.8300	156.7	A	EMS AMBU/AIR UNITS
	13	AIR TO GROUND	A/G CHICK	A/G CHICKADEE	170.2625		170.2625		A	NIFC A/G
	14	AIR TO GROUND	A/G SECONDARY	A/G SECONDARY	169.5625		169.5625		A	NIFC A/G
	15	AIR TO GROUND	A/G WALKER	A/G WALKER	168.1375		168.1375		A	NIFC A/G
	16	AIR GUARD	AIRGUARD	ALL RESOURCES	168.6250		168.6250	110.9	A	EMERGENCY USE ONLY

5. Special Instructions: LAST CLONE Revision: WALKER082821. Communications Phone # (206) 473-9053

6. Prepared By (Communications Unit Leader)	Name: MISSY PARKER	Signature: <i>Missy Parker</i>
ICS 205	IAP Page	Date/Time: 09/01/2021 2000

WALKER CREEK FIRE DEMOB LIST

Thursday September 2, 2021

DEMOB INSTRUCTIONS

Paperless and electronic demobilization will be used to the extent possible for all resources. **PLEASE LOOK closely at the Fire Name and Resource Number.** All finance documents will be emailed and signed virtually. Ensure all Final CTR's and Shift Tickets **ARE KEPT UP TO DATE** with Finance. Please be **PATIENT** as the phone lines are limited the and it takes a little longer for the virtual process.

DEMOB STEPS

(Must Be Done In Order)

1. If you have any items checked out by Supply and Communications, proceed to those areas to turn in equipment. If you don't have any items checked out, proceed to **NEXT STEP**.
2. If you were inspected upon arrival or need a No Claims/No Comp receipt, check out with Ground Support. If this does not apply, proceed to **NEXT STEP**.
3. Call Finance at 509-423-6011 or 509-433-1115 or 509-531-7418 to finalize paperwork.
4. Call DMOB at 206-473-1425 or 509-432-6143 to complete the process to be released.

*** WALKER CREEK ***

CREWS

C-22	0600	HC2	PR FORESTATION
------	------	-----	----------------

EQUIPMENT

E-223	0600	DOZ2	SILVER NICKEL LOGGING
E-261	0600	ENG5	LATE SUMMERS WILDFIRE
E-212	0615	ENG4	FIRE WORKS
E-280	0615	FEL1	TURLEY LOGGING
E-92	0630	DOZ2	PRICE EXCAVATION
E-141	0700	FEL1	BOB MCDANIEL
E-14	1000	ENG5	J3 CONTRACTING
E-122	1000	ENG6	SMITHFIELD

OVERHEAD

O-285	0600	HEQB	CURRIN, TRISTAN
O-160	0600	EMTF	LANDRUM, MARA
O-270	0600	FOBS	LAWRENCE, JOANIE
O-286	0615	HEQB	CARLSEN, KEVIN
O-260	0630	STEN	HADLEY, DAVID
O-307	0630	CAMP	RODRIQUEZ, GABRIEL
O-462	1000	EMPF	COUNTS, JOSH
O-234	1300	RADO	GALLIN, WILLIAM

Walker Creek/Chickadee Fires COVID-19 Information

Who should be PCR tested for COVID-19?

- Based on the number of positive COVID-19 cases on the Walker Creek/Chickadee Fires, Okanogan County Public Health has advised ALL firefighters assigned to the fires to be tested.

How can I get tested?

- If you missed the opportunity to get a COVID-19 PCR test at your assigned branch location, OR if you develop COVID-like symptoms/are made aware of close contact with someone who tests positive for COVID-19, **contact the NW Team 12 Health Liaison at 509-675-3504** to make testing arrangements.

What happens if I test positive?

- If you test positive for COVID-19 but have mild or no symptoms, NW Team 12 has a plan in place to keep firefighters working while safely isolated from other crews. A positive test does not automatically mean you will be isolated and unable to work. **It is imperative that you notify your supervisor of positive test results** if you are tested somewhere other than our designated locations on the fire, so that we can manage your working isolation away from other resources.
- If you test positive and your symptoms are more severe, NW Team 12 will work with Okanogan County Public Health to find the best solution for your isolation and recovery in coordination with your home unit.

What happens if I choose not to be tested?

- Firefighters who are not tested and have NO COVID-19 symptoms will be allowed to keep working, but will be isolated from other crews to prevent further spread from unidentified cases.
- Firefighters who choose not to be tested but ARE displaying COVID-19 like symptoms will be required to isolate according to Okanogan County Public Health recommendations and will not be allowed to continue working.

When and how will I get my test results?

- With the current backlog of tests at area labs, your test results may not be available for 24-48 hours, or in some cases longer. There will be no change to your work status while we await results. You will be able to access your results online as soon as they are available. Details will be provided to you when you are tested.

Is rapid testing available?

- Rapid testing is available at all times, however these tests are most accurate for symptomatic patients and might not catch someone who is asymptomatic but still carrying COVID-19, which is why we recommend PCR testing for firefighters who might have been exposed but are not showing symptoms.

For more information about testing or getting a COVID-19 Vaccine, visit <https://okanogancounty covid19.org/>

WALKER CREEK/CHICKADEE FIRE COVID-19 MITIGATIONS

Supervisors are required to go over this list each morning with assigned resources- report any symptoms to medical unit. **take temperature with no touch thermometer, if available**

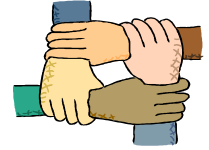
In the last 24 hours have you experienced:

- Cough more than expected?
- Shortness of breath or difficulty breathing?
- Fever? Chills?
- Sore throat?
- New loss of taste or smell?
- Fatigue, outside your normal for firefighting?
- Headache, outside your normal for firefighting?
- Congestion or runny nose?
- Nausea or vomiting
- Diarrhea

- **All personnel are required to wear a mask at all times, whether indoors or outdoors, unless working alone or actively engaged in firefighting on the fireline.**
- **Use radio or Zoom link provided to join briefings remotely.**
- **Observe 6ft Distancing at all times.**
- **Send crew representatives to pick up meals - masks must be worn in food lines.**
- **Wash hands frequently and disinfect high-traffic areas on a regular basis.**
- **Limit close contact between firefighters and the public to prevent exposure and spread. WEAR A MASK AT ALL TIMES WHILE IN PUBLIC PLACES.**



Human Resource Message



Walker Creek and Chickadee Creek Fires, September 2, 2021

Hello everyone: I wanted to just check in with folks today and see how things are going. We have been out on fire assignments for a long time. In addition to fighting fire or supporting the fire, being away from home, family, pets, and all the other responsibilities we have in our lives can cause stress.

We want to make sure that you are dealing with stress in a healthy way and that you are taking care of yourselves and each other. Remember to check in with folks back home and let them know how you are doing. They too are working hard and need recognition so a simple thank you goes a long way in showing them support as well. Eating healthy, hydrating appropriately, getting adequate rest, and staying connected to family is critical to our well-being and is a good way to help with stress.

If you need help with anything, if you are having issues with anyone, please reach out for assistance prior to letting any situation escalate. We can clear up any misunderstanding and get folks safely back to work without added stress.

Thank you again for the great work accomplished on this incident. Be safe and enjoy the day. We appreciate your service.



Quote for the day: “No person was ever honored for what he received. Honor has been the reward for what he gave.” – Calvin Coolidge 30th President of the U.S.

**Susie Manezes, Human Resource Specialist -NW Team 12
Contact Number: 602-571-9327. smanezes@blm.gov**

A Message from Public Information

TALKING TO THE PUBLIC ABOUT DONATIONS: *Please help us inform the public that firefighters are **UNABLE** to receive food donations.*

Community members are so grateful for the work you are doing that they **want to bring meals to the fireline, which we unfortunately cannot receive.**

If you are talking to the public and the subject of meals or supplies comes up, please **emphasize that as fire line resources, you carry and receive everything you need.** Thank you for helping us spread the word!

If community members have questions that you do not feel equipped to answer professionally, please give them our fire information line: (509) 557-7257.

PHOTOS: Your fireline photos help us build understanding with the public. Community members want to see what you see because you go where others can't safely go. We are looking for any pictures of the fire line and **fire resources working on the fire line in their PPE.** You can send photos to:

Email: 2021.walkercreek@firenet.gov

Text: (509) 557-7257

As always, make sure you're wearing all your PPE and conveying a professional, caring, and respectful attitude toward the homes and land in this community. Thanks for helping us out!

Lastly, while it's our job to talk to the public, we want you to know the public is talking to you too. Today we received this email from a happy cabin and landowner on the Walker Creek Fire:

"Today, I went up to check on the cabin after I heard the evacuation order had been lifted on Friday. I wish to give you all my heartfelt thanks for digging a hand line around the cabin, woodshed, and storage shed, as well as laying hose line with a pump in the creek next to the cabin. I had no idea this had been done. Thanks again for all the wonderful work you folks are doing!"



Logistics Message

Omak Base Camp

Kitchen Hours

0600 to 0900 Breakfast

1800 to 2100 Dinner

Supply/Cache Hours

0530-2130

Shower Hours

0430-1300 Open

1400-2300 Open

Ground Support

0500-2200



Walker Creek and Chickadee Creek Fire

Finance Message

2021.walkercreek.finance@firenet.gov

For all agency, casual hire & Co-Ops Call Carol at (509) 433-1115

For all Contract Resources (VIPR) Call Todd (509) 939-9262

DNR Hire at Fire Call Mark (509) 531-7418

Make sure that your CTR and ST have the correct fire that you are working on.
Please make sure to call the appropriate person for assistance.

**** Finance is all virtual. When you call us to demob we will tell you what we need from you. Those that are in a location where there is no cell service, as soon as you get into the cell range please call us with all your time and we will tell you where to send it.**

We will be processing OF-288s and 286s all day. Finance will not need you here to process these, so you can head home after you have completed the demob process. We will send time to your email that you provide us by the end of the day.

We got the email fixed 😊 Please send your time to the Walker Creek email box only. Please stop sending to other mailboxes. It's taking us more time to sort through the duplicates that we are receiving.

If we need something from you, we will call and request what we need.

Thank you for your patience and understanding

**Note to Contractors with
transports**

For all heavy equipment with a transport, two operators must be shown on the shift ticket for the transport to receive full pay.

Incident Maps

How to Download Maps in Avenza

If you're cell signal is poor you may need to connect to a wifi to download maps. However sometimes being connected to a wifi can slow map downloads. You'll just have to find out what works best.

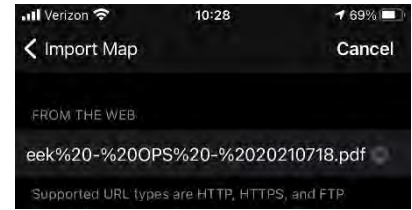
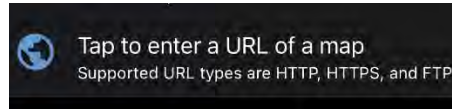
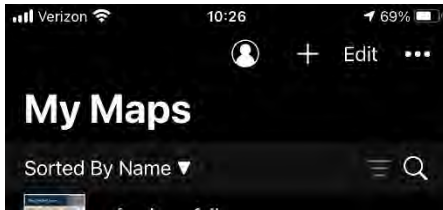
Method 1: From a browser - If you have a good cell or wifi signal

1. Tap on the desired map link and wait for the preview. *If it fails to load, use method 2 instead*
2. Tap the 'send to' icon (square with up arrow)
3. Choose the Avenza app



Method 2: From Avenza direct – if you don't have a good cell or wifi signal

1. Tap and hold on the desired map link, then choose 'copy' to copy the direct URL to the map
2. Launch the Avenza app
3. When not in any map... Tap the + (plus) icon at the top of the screen
4. Choose the load from URL option (last choice)
5. Paste the direct URL to the map
6. Tap 'Done' ; the map will begin downloading



How to Send Map Updates to the Situation Unit

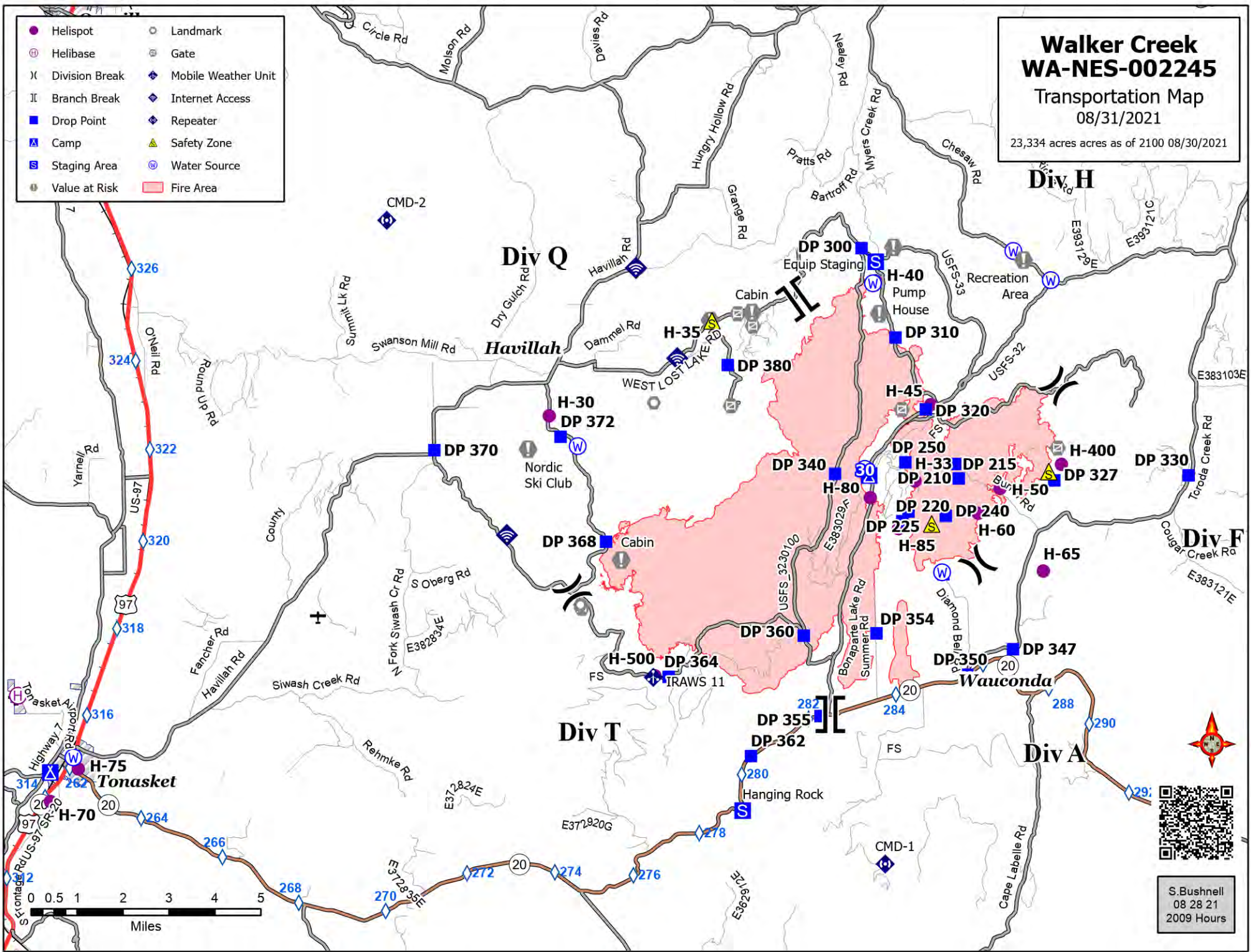
1. From within the map in Avenza, click the pin with three lines near the lower-right corner.
2. *iPhone:* In the lower right, click the square with up arrow. From the pop-up menu, choose Export to Others.
Android: In the lower right, click the circle with three lines. Click the pop-up circle with up arrow.
3. Set these options:
 - a. Filename – leave alone
 - b. Export Format – choose SHP, GPX or KML
 - c. Data – all features
 - d. Image size – no image
4. Click the Export button in the upper-right corner.
5. When the export is ready, choose your Mail application.
6. Email the update to 2021.walkercreek.situation@firenet.gov for the Walker Creek Fire map updates or 2021.chickadeecreek.situation@firenet.gov for the Chickadee Fire map updates.
7. If you have questions, call or text the Situation Unit at 360-584-3373.
8. Your email needs to include an explanation of the data and a contact phone number.

If all else fails draw your map update on your paper map, take a picture and it attach that to an email to the above addresses.

Walker Creek WA-NES-002245 Transportation Map 08/31/2021

23,334 acres as of 2100 08/30/2021

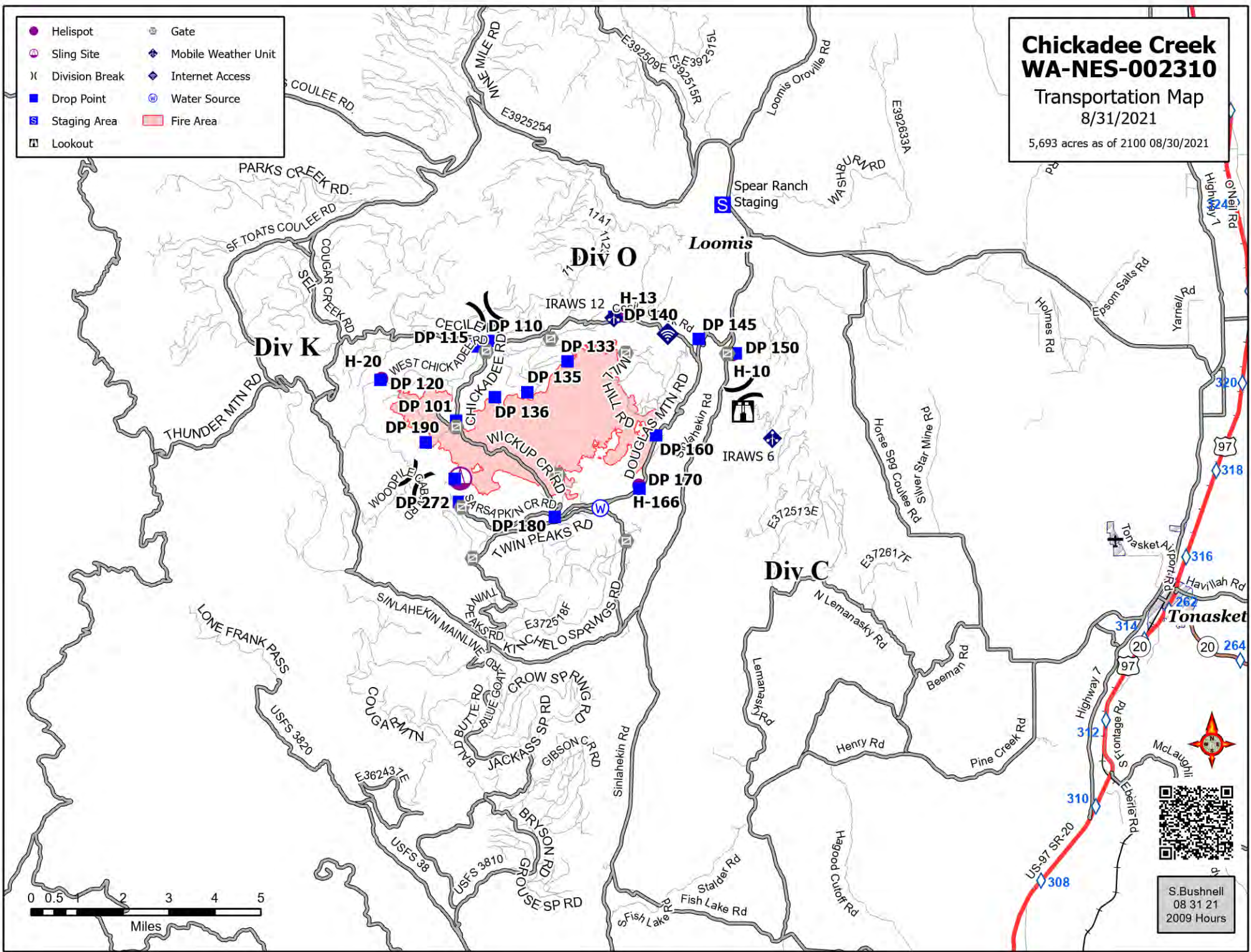
- | | |
|------------------|-----------------------|
| ● Helispot | ○ Landmark |
| ⊕ Helibase | ⊕ Gate |
| ⌵ Division Break | ⬢ Mobile Weather Unit |
| ⌵ Branch Break | ⬢ Internet Access |
| ■ Drop Point | ⬢ Repeater |
| ▲ Camp | ▲ Safety Zone |
| ⊠ Staging Area | ⊠ Water Source |
| ⊙ Value at Risk | ■ Fire Area |



S. Bushnell
08 28 21
2009 Hours

**Chickadee Creek
WA-NES-002310**
Transportation Map
8/31/2021
5,693 acres as of 2100 08/30/2021

- Helispot
- ⊗ Gate
- ⊗ Sling Site
- ⊗ Mobile Weather Unit
- ⊗ Division Break
- ⊗ Internet Access
- Drop Point
- ⊗ Water Source
- Staging Area
- Fire Area
- ⊗ Lookout



S. Bushnell
08 31 21
2009 Hours



EMERGENCY PLAN INCIDENT WITHIN AN INCIDENT

ON SCENE INCIDENT COMMANDER

In the event of an accident or medical incident of any size, your primary responsibility is to ENSURE that the victim(s) receive prompt and effective Triage, Treatment, Extrication and Transport.

- **ENSURE THE MEDICAL INCIDENT REPORT IN THE INCIDENT ACTION PLAN IS BEING USED AND FOLLOWED- *IF DETERMINED TO BE A GREEN, DO NOT DECLARE EMERGENCY TRAFFIC AND ONLY COMPLETE LINE 1-4 ON MIR*.**
- Conduct size-up of the incident nature of accident, number type of resources involved, latitude and longitude location (DD°MMM.MM format): notify incident communications center and supervisor, request assistance as needed.
- Order and coordinate medical and support response to the accident.
- Evaluate special needs (law enforcement, haz mat, etc.).
- Clear the command frequency if medical emergency, coordinate with incident communications and air attack for air medical transportation needs.
- Preserve and photograph the scene for accident investigation.
- Remain aware of surroundings and the status of the main incident (delegate personnel to monitor the main fire) to ensure safety of medical treatment personnel.
- Until relieved, supervise and manage all personnel involved at the incident scene.

MEDICAL PLAN (ICS 206 WF)

20 Incident/Project Name			1. Operational Period			
<h2 style="margin: 0;">Walker Creek Fire</h2>			<h2 style="margin: 0;">September 2nd, 2021</h2> <h3 style="margin: 0;">0600-2200</h3>			
2. Ambulance Services						
Name	Complete Address	Phone	Advanced Life Support (ALS) Yes No			
Lifeline Ambulance	912 Koala Ave Omak, WA 98841	911 - Dispatch 509-663-8091	x			
3. Air Ambulance Services						
Name	Phone	Type of Aircraft & Capability				
Life Flight Network	800-232-0911	Bell 407 - Brewster				
Airlift Northwest	800-426-2430 or 911	Rotor in Wenatchee				
4. Hospitals						
Name Complete Address	Coordinate Standard Degrees Decimal Minutes DD° MM.MMM' N - Lat DD° MM.MMM' W - Long	Travel Time From Bonaparte		Phone	Helipad Yes No	Level of Care Facility
North Valley Hospital 203 S Western Ave Tonasket, WA 98855	Lat: 48°42.4549' N	13 min	38 min	509-486-2151	X	Level 4 Trauma
	Long: 119°26.3267' W					
Mid-Valley Hospital 912 Koala Ave Omak, WA 98841	Lat: 48°23.8336' N	24 Min	59 min	509-826-1760	X	Level 4 Trauma
	Long: 119°32.8758' W					
Confluence Health Hospital (Central Washington Hospital) 1201 S Miller St. Wenatchee, WA 98801	Lat: 47°24.4340' N	1 Hr 12 min	2 Hr 48 min	509-662-1511	X	Level 2 Trauma
	Long: 120°19.3664' W					
Harborview Medical 325 9 th Ave Seattle, WA 98104	Lat: 47°36.1897' N	2 Hr 22 min	5 Hr	541-222-6929	X	Level 1 Trauma Burn Center
	Long: 122°19.4759' W					
5. Division Branch Group	Capability	Personnel				
Div A/F	Johnsen EMTF	AMR Ambulance (Ambo 3) Gates		Byrd EMPF		
Div H	Sewell EMPF					
Div Q	Bridges EMPF					
Div T	Marin EMPF					
6. Prepared By (Medical Unit Leader)		7. Date/Time	8. Reviewed By (Safety Officer)		9. Date/Time	
Lee Venning (T), Eamonn Ryan <i>Lee Venning</i>		09/1/2021 1800	Troy Corn <i>Troy Corn</i>		09/1/2021 1800	

MEDICAL PLAN (ICS 206 WF)

20 Incident/Project Name		1. Operational Period					
Chickadee Creek Fire		September 2nd 2021 0600-2200					
2. Ambulance Services							
Name	Complete Address	Phone	Advanced Life Support (ALS) Yes No				
Lifeline Ambulance	912 Koala Ave Omak, WA 98841	911 - Dispatch 509-663-8091	X				
3. Air Ambulance Services							
Name	Phone	Type of Aircraft & Capability					
Life Flight Network	800-232-0911	Bell 407 - Brewster					
Airlift Northwest	800-426-2430 or 911	Rotor in Wenatchee					
4. Hospitals							
Name Complete Address	Coordinate Standard Degrees Decimal Minutes DD° MM.MMM' N - Lat DD° MM.MMM' W - Long	Travel Time From Loomis	Phone	Helipad Yes No	Level of Care Facility		
North Valley Hospital 203 S Western Ave Tonasket, WA 98855	Lat: 48°42.4549' N	8 min 22 min	509-486-2151		X	Level 4 Trauma	
	Long: 119°26.3267' W						
Mid-Valley Hospital 912 Koala Ave Omak, WA 98841	Lat: 48°23.8336' N	20 Min 46 min	509-826-1760	X		Level 4 Trauma	
	Long: 119°32.8758' W						
Confluence Health Hospital (Central Washington Hospital) 1201 S Miller St. Wenatchee, WA 98801	Lat: 47°24.4340' N	68 min 2 Hr 35 min	509-662-1511	X		Level 2 Trauma	
	Long: 120°19.3664' W						
Harborview Medical 325 9 th Ave Seattle, WA 98104	Lat: 47°36.1897' N	1Hr 38 min 4 Hr 50 min	541-222-6929	X		Level 1 Trauma Burn Center	
	Long: 122°19.4759' W						
5. Division Branch Group	Capability	Personnel					
Div C	Smith EMPF (UTV) Pend Oreille Ambulance (Ambo 2) Sylvester						
Div K/O	Satcher EMTF Kyle Meade EMPF Cooper EMPF						
6. Prepared By (Medical Unit Leader)		7. Date/Time	8. Reviewed By (Safety Officer)			9. Date/Time	
Lee Venning (T), Eamonn Ryan <i>Lee Venning</i>		09/1/2021 1800	Troy Corn <i>Troy Corn</i>			09/1/2021 1800	

MEDICAL PLAN (ICS 206 WF)

Controlled Unclassified Information//Basic

Medical Incident Report

FOR A NON-EMERGENCY INCIDENT, WORK THROUGH CHAIN OF COMMAND TO REPORT AND TRANSPORT INJURED PERSONNEL AS NECESSARY.

FOR A MEDICAL EMERGENCY: IDENTIFY ON SCENE INCIDENT COMMANDER BY NAME AND POSITION AND ANNOUNCE "MEDICAL EMERGENCY" TO INITIATE RESPONSE FROM IMT COMMUNICATIONS/DISPATCH.

Use the following items to communicate situation to communications/dispatch.

1. CONTACT COMMUNICATIONS / DISPATCH (**Verify correct frequency prior to starting report**)

Ex: "Communications, Div. Alpha. Stand-by for Emergency Traffic."

2. INCIDENT STATUS: *Provide incident summary (including number of patients) and command structure.*

Ex: "Communications, I have a Red priority patient, unconscious, struck by a falling tree. Requesting air ambulance to Forest Road 1 at (Lat./Long.) This will be the Trout Meadow Medical, IC is TFLD Jones. EMT Smith is providing medical care."

Severity of Emergency / Transport Priority	<input type="checkbox"/> RED / PRIORITY 1 Life or limb threatening injury or illness. Evacuation need is IMMEDIATE <i>Ex: Unconscious, difficulty breathing, bleeding severely, 2^o – 3^o burns more than 4 palm sizes, heat stroke, disoriented.</i> <input type="checkbox"/> YELLOW / PRIORITY 2 Serious Injury or illness. Evacuation may be DELAYED if necessary. <i>Ex: Significant trauma, unable to walk, 2^o – 3^o burns not more than 1-3 palm sizes.</i> <input type="checkbox"/> GREEN / PRIORITY 3 Minor Injury or illness. Non-Emergency transport <i>Ex: Sprains, strains, minor heat-related illness.</i>	
Nature of Injury or Illness & Mechanism of Injury		<i>Brief Summary of Injury or Illness (Ex: Unconscious, Struck by Falling Tree)</i>
Transport Request		<i>Air Ambulance / Short Haul/Hoist Ground Ambulance / Other</i>
Patient Location		<i>Descriptive Location & Lat. / Long. (WGS84)</i>
Incident Name		<i>Geographic Name + "Medical" (Ex: Trout Meadow Medical)</i>
On-Scene Incident Commander		<i>Name of on-scene IC of Incident within an Incident (Ex: TFLD Jones)</i>
Patient Care		<i>Name of Care Provider (Ex: EMT Smith)</i>

3. INITIAL PATIENT ASSESSMENT: *Complete this section for each patient as applicable (start with the most severe patient)*

Patient Assessment: See IRPG page 106

Treatment:

4. TRANSPORT PLAN:

Evacuation Location (*if different*): (*Descriptive Location (drop point, intersection, etc.) or Lat. / Long.*) Patient's ETA to Evacuation Location:

Helispot / Extraction Site Size and Hazards:

5. ADDITIONAL RESOURCES / EQUIPMENT NEEDS:

Example: Paramedic/EMT, Crews, Immobilization Devices, AED, Oxygen, Trauma Bag, IV/Fluid(s), Splints, Rope rescue, Wheeled litter, HAZMAT, Extrication

6. COMMUNICATIONS: Identify State Air/Ground EMS Frequencies and Hospital Contacts as applicable

Function	Channel Name/Number	Receive (RX)	Tone/NAC *	Transmit (TX)	Tone/NAC *
COMMAND					
AIR-TO-GRND					
TACTICAL					

7. CONTINGENCY: **Considerations:** *If primary options fail, what actions can be implemented in conjunction with primary evacuation method? Be thinking ahead.*

8. ADDITIONAL INFORMATION: *Updates/Changes, etc.*

REMEMBER: Confirm ETA's of resources ordered. Act according to your level of training. Be Alert. Keep Calm. Think Clearly. Act Decisively.

Controlled Unclassified Information//Basic