



INCIDENT ACTION PLAN

Walker Creek

Chickadee Creek

September 4, 2021

Operational Period – 0600-1800



BRIEFING Phone
(audio only)
[+1 929-336-2435](tel:+19293362435), [452803978#](tel:+1452803978)
Phone Conference
ID: 452 803 978#

QR Code for:
Virtual Check-in
Time
Maps
IAP
COVID19 Self Test



Walker Creek Fire
WA-NES-002245
PNN7RL (1522)
WA state code: 221KPI

Chickadee Creek Fire
WA-NES-002310
PNN7WA (1522)
221-JFZ

INCIDENT OBJECTIVES (ICS 202)

1. Incident Name:	2. Operational Period: DAY	
WALKER CREEK & CHICKADEE CREEK	Date/Time From: 09/04/2021 0600 SAT	Date/Time To: 09/04/2021 1800 SAT
3. Objective(s):		
<p>-Protection of human life and safety is the first priority for all actions, and can overrule all other strategic and incident objectives and management and incident requirements.</p> <p>-Base management decisions on meeting objectives while also minimizing the risk of COVID-19 exposure to responders and the public. COVID-19 considerations may alter how goals are met goals but should not lead to higher-risk tactics.</p> <p>-Secure fire, construct line, patrol and mop up as directed by operations to eliminate the risk of loss of containment when hazards have been mitigated to an acceptable risk level. This may require burning in areas of the fires depending on the weather and conditions to meet suppression objectives.</p> <p>-Monitor fire activity and, protect as needed, the WUI infrastructure, timber values, recreation areas, FS campgrounds, and facilities.</p> <p>-Implement and coordinate suppression and suppression repair actions to minimize impacts to the resource area, local roadless areas, and other points of high value by ensuring standards are followed. Mitigate damage caused by suppression activities, as resources and time allow. Suppression is still the primary objective. Release resources being used for suppression repair that are a critical need to the national firefighting effort unless they are directly tied to life, safety, or additional damage.</p>		
4. Operational Period Command Emphasis:		
Secure and mop-up direct control lines. Improve indirect control lines, make preparations for firing operations.		
General Situational Awareness:		
Maintain situational awareness, identify hazards and develop mitigations for them.		
5. Site Safety Plan Required? Yes <input type="checkbox"/> No <input checked="" type="checkbox"/>		
Approved Site Safety Plan(s) Located		
6. Incident Action Plan (the items checked below are included in this Incident Action Plan):		
<input checked="" type="checkbox"/> ICS 202 <input checked="" type="checkbox"/> ICS 203 <input checked="" type="checkbox"/> ICS 204 <input checked="" type="checkbox"/> ICS 205 <input type="checkbox"/> ICS 205A <input checked="" type="checkbox"/> ICS 206	<input type="checkbox"/> ICS 207 <input type="checkbox"/> ICS 208 <input checked="" type="checkbox"/> ICS 220 <input checked="" type="checkbox"/> Map/Chart <input checked="" type="checkbox"/> Weather Forecast/Tides/Currents	Other Attachments: <input checked="" type="checkbox"/> HR MESSAGE <input checked="" type="checkbox"/> COVID SCREENING <input type="checkbox"/> _____ <input type="checkbox"/> _____
7. Prepared by: MARGE HUTCHINSON Position/Title: PSC2	Signature: <i>Marge Hutchinson</i>	
8. Approved by Incident Commander:	Name: JEFF DIMKE	Signature: <i>Jeff Dimke</i>
ICS 202	IAP Page	Date/Time: 09/03/2021 2000

ORGANIZATION ASSIGNMENT LIST (ICS 203)

1. Incident Name:		2. Operational Period: DAY	
WALKER CREEK & CHICKADEE CREEK		Date/Time From: 09/04/2021 0600 SAT	Date/Time To: 09/04/2021 1800 SAT
3. Incident Commander(s) and Command Staff:		SECURITY UNIT	
IC/UC	JEFF DIMKE	7. Operations Section:	
DEPUTY	BOBBY SHINDELAR	PLANNING OPS	AARON ROWE MIKE DAVIS (T)
SAFETY OFFICER	TROY CORN JACK CATES (VIRTUAL)	OPS SECTION CHIEF	JEROMY WILSON (T)
INFORMATION OFFICER	MARY BEAN ROLAND EMETAZ	BRANCH DIRECTOR	JERRAN FLINDERS
LIAISON OFFICER	SCOTT CRAWFORD	DIVISION/GROUP	A/F CODY ACORD JASON EMHOFF
HEALTH LIAISON	LIV STECKER	DIVISION/GROUP	H MATT KENNEDY
HUMAN RESOURCE SPECIALIST	SUSIE MANEZES	DIVISION/GROUP	Q MATT TRAYNHAM JAMES DICKINSON (T)
4. Agency/Organization Representative(s):		DIVISION/GROUP	T MICHAEL JACKSON SETH JONES (T)
Agency/Organization	Name	DIVISION/GROUP	C BOB HINDS SUSAN GREENLEAF (T)
DNR	KEN MCNAMEE (ADMIN) BRETT WALKER (AREP)	DIVISION/GROUP	K/O CHET DIERINGER SAM STEINSHOUER (T)
USFS	RODNEY SMOLDEN (ADMIN) MATT MARSH (AREP)		
BLM	CURTIS BRYANT (ADMIN)		
OKANOGAN COUNTY OES	MAURICE GOODALL		
5. Planning Section:		7b. Air Operations Branch:	
CHIEF	MARGE HUTCHINSON	AIR ATTACK SUPERVISOR	
DEPUTY	HOWARD JOHNSON (VIRTUAL)	AIR SUPPORT SUPERVISOR	
RESOURCES UNIT	JILL JOHNSON	8. Finance/Administration Section:	
SITUATION UNIT	DAVE WISCHER (VIRTUAL)	CHIEF	CHERI FULLER CHRISTINA GOEBEL (T)
DOCUMENTATION UNIT	DEIDRE SMITH (VIRTUAL))	TIME UNIT	CAROL LONG
DEMOBILIZATION UNIT	MIKE HESTON (VIRTUAL) ED MORGAN	PROCUREMENT UNIT	MARK BOHNET
FIRE BEHAVIOR ANALYST	DON STRAND	COMPENSATION UNIT	CHERI FULLER
GIS SPECIALIST	SHAWN BUSHNELL MIKE TONKEL (T)	COST UNIT	KAY HIGH (VIRTUAL)
TECHNOLOGY SUPPORT SPECIALIST	TODD MALLERY	ICPI	ROB HECHINGER
INCIDENT METEOROLOGIST	TOM BIRD		
6. Logistics Section:			
CHIEF	DAN SOPTICH		
DEPUTY	KEVIN HAUGHTON		
FACILITIES UNIT	SCOTT BEAULAUER		
GROUND SUPPORT UNIT	DAVE HARSH		
COMMUNICATIONS UNIT	MISSY PARKER		
MEDICAL UNIT	EAMONN RYAN LEE VENNING (T)		
SUPPLY UNIT	JOHN KAUPA		
FOOD UNIT	RUSS HOVEY		
9. Prepared By:	Name: JILL JOHNSON	Position/Title: RESL	Signature:
ICS 203	IAP Page	Date/Time: 09/03/2021 2000	<i>Jill Johnson</i>



Fire Weather Forecast



FORECAST NO: 28
PREDICTION FOR: Saturday
SHIFTDATE: September 4, 2021
FORECAST ISSUED: 9/3/2021 at 2000

INCIDENT: Walker-Chickadee Fires
UNIT: DNR-USFS-BLM
Tom Bird - (915) 588-9781 tom.bird@noaa.gov
SIGNED: Incident Meteorologist (IMET)

Weather Discussion: *****More clouds – Continued Warm and Dry*****
 A flat ridge will remain over the Pacific Northwest today to keep the region warm and dry. Deep westerly flow aloft, with an approaching disturbance and weak frontal boundary, will bring periods of high and mid-level clouds, as well as drift smoke from other fires over the fire. Max temperatures and min relative humidity will be similar to yesterday's conditions, however, afternoon winds will become somewhat breezy. This evening and overnight, lower level clouds and a few sprinkles may pass across the area, but they should be very isolated and light, with no measurable rain expected. This system exits the region Sunday with continued breezy westerly winds. Early next week looks warmer and drier as high pressure builds in from the south. This should elevate fire weather conditions for a short period before a Wednesday front cools the region.

WEATHER FORECAST for CHICKADEE FIRE

TODAY:

SKY/WEATHER: Increased clouds - partly sunny. Drift smoke. Warm and dry. Breezy in the afternoon.
High Temperature...68-72° above 4000 ft...71-76° below 4000 ft. (24hr chg +/- 1°)
Min RH.....24-29% above 4000 ft...20-25% below 4000 ft. (24hr chg +/- 1%)
20-FOOT WINDS: Terrain influenced upslope 5-12 mph, exposed areas S to SW 8-11 G 15-25 mph.
CWR (>=0.10")....0% **LAL....**1 **Haines Index...2 (Very Low)** **Mixing Height...6600 ft AGL**

TONIGHT:

SKY/WEATHER: Partly to mostly cloudy. A few sprinkles possible. Improved RH recovery.
Low Temperature...Slopes: 50-55° Valleys: 45-50°
Max RH.....Slopes: 50-60% Valleys: 60-70%
20-FOOT WINDS: Generally down drainage 3-6 mph. **Ridges & N/S valleys:** Southwest to west 5-15 mph.
Chance of Rain: 10% **CWR (>=0.10")....**0% **LAL....**1

WEATHER FORECAST for WALKER FIRE

TODAY:

SKY/WEATHER: Increased clouds - partly sunny. Drift smoke. Warm and dry. Breezy in the afternoon.
High Temperature...67-70° above 4000 ft...70-75° below 4000 ft. (24hr chg +/- 1°)
Min RH.....24-29% above 4000 ft...20-25% below 4000 ft. (24hr chg +/- 1%)
20-FOOT WINDS: Terrain influenced upslope 5-12 mph, exposed areas S to SW 8-11 G 15-25 mph.
CWR (>=0.10")....0% **LAL....**1 **Haines Index...2 (Very Low)** **Mixing Height...6600 ft AGL**

TONIGHT:

SKY/WEATHER: Partly to mostly cloudy. A few sprinkles possible. Improved RH recovery.
Low Temperature...Slopes: 50-55° Valleys: 45-50°
Max RH.....Slopes: 55-65% Valleys: 65-75%
20-FOOT WINDS: Generally down drainage 3-6 mph. **Ridges & N/S valleys:** Southwest to west 5-15 mph.
Chance of Rain: 10% **CWR (>=0.10")....**0% **LAL....**1

Extended Outlook

SUNDAY: Partly cloudy. Slightly breezy. Early clouds, more afternoon sun. Highs: 65-75. Min RH: 27-32%. Winds: Southwest to west 9-14 mph with gusts 20-25 mph.
MONDAY: Mostly sunny. Dry and seasonal. Highs: 68-78. Min RH: 20-25% Winds: West to NW 8-15 mph over ridges and upper slopes. Mostly terrain upslope otherwise.
TUESDAY: Partly cloudy. Warmer and drier. Highs: 72-82. Min RH: 18-23% Winds: South to southwest 8-15 mph over ridges and upper slopes. Mostly terrain upslope otherwise.

FIRE BEHAVIOR FORECAST

FORECAST NUMBER: 28	TYPE OF FIRE: Wildland
FIRE NAME: Walker Creek & Chickadee Creek	OPERATIONAL PERIOD: Sept 4, 2021 0600-0600
DATE ISSUED: September 3, 2021	TIME ISSUED: 2000
UNIT: WA DNR, BLM, USFS	Don Strand FBAN

INPUTS

WEATHER SUMMARY: See attached fire weather forecast

OUTPUTS

FIRE BEHAVIOR

FUELS: The fires are burning mostly in mixed conifer timber litter consisting of Douglas-fir (many with dwarf mistletoe clumps), western larch, Engelmann spruce reproduction and overstory., and lodgepole pine below 6,000'. Sub-alpine fir, white bark pine, and lodgepole pine occur above 6,000'. All timber types have ladder fuels with black moss/lichens that make for an easy transition to crown fire. Dead fine fuels, grass (where not heavily grazed), and slash can increase surface fire spread. Most live fuels, except for red alder, are available to carry fire and fuel moistures will continue to drop with seasonal drying. Live fuels are still drought stressed.

GENERAL: Fire behavior potential increasing the next several days as the weather continues to warm and dry. Generally, expect smoldering and creeping fire behavior on both fires. Potential for isolated torching exist due to abundant ladder fuels. Some limited areas will have backing and flanking fire behavior with isolated torching. Expect a notable increase in fire behavior potential as the humidity drops to 30% or lower. Additionally, in locations where fire edges are exposed to afternoon winds, an increase in intensity is likely. Unshaded surface fuels will be more available to carry fire.

SPECIFIC:

Chickadee: Continued smoldering and creeping fire behavior in scattered areas of the fire. In limited areas of unburned islands and areas of dirty burns, expect periodic backing and flanking fire spread. Still potential for torching and short-range spotting with the abundant ladder fuels. Areas exposed to winds have potential to see an increase in intensity.

Fuel Moistures- Aeneas LO WIMS data from yesterday were- 10-hour 10%, 100-hour 13%, 1000-hour 13%. ERC 47. Chickadee IRAWS on Cecil Creek Road, yesterday's minimum 10-hr fuel moisture was 6%. Probability of Ignition will approach 70% unshaded and 50% shaded.

Walker: Scattered smoldering and creeping fire behavior today with continued potential for isolated torching. In limited areas where the fire edge is interior to control lines, backing and flanking with isolated torching will continue. Potential for southerly winds channeling through saddles so any wind slope alignment can increase fire intensity.

Fuel Moistures- Lost Lake RAWs WIMS data from yesterday were- 10-hour 11%, 100-hour 13%, 1000-hour 14%. ERC 44. Walker Creek IRAWS near DP 364, yesterday's minimum 10-hr fuel moisture was 7%. Probability of Ignition will approach 70% unshaded and 50% shaded.

AIR OPERATIONS: Expect some turbulence in areas of complex terrain

SAFETY

To help with your Situational Awareness, periodically take weather observations and calculate 1-hr time lag fuel moisture and probability of ignition for your location.

Safety is something that happens between your ears, not something you hold in your hands.

"Never give an order that cannot be obeyed."



SAFETY MESSAGE

4 September 2021

INCIDENT: Walker Creek/Chickadee

OPERATIONAL PERIOD: 0600-1800

WORKING AROUND HEAVY EQUIPMENT

Post lookouts around equipment work areas. Establish communications with equipment boss and operator. Do not work down slope from equipment. Familiarize crews with specialty equipment and processes. Follow JHA for specific equipment use.

COMMON BARRIERS TO EFFECTIVE COMMUNICATION

Lack of focus. You can't communicate effectively when you're multitasking. If you're checking your phone, planning what you're going to say next, or daydreaming you're almost certain to miss nonverbal cues in the conversation. To communicate effectively, you need to avoid distractions and stay focused.

COVID MITIGATIONS

Please review your COVID/Viral Transmission prevention guidelines. Maintain your distancing to the greatest extent, cough or sneeze away from other people, mask up when indoors and respect the personal space of others. If you begin feeling ill, notify your supervisor and seek medical attention for screening.

Ensure LCES in in place before engaging and continue to evaluate during the entire shift.

SAFETY OFFICER: Troy Corn, Jack Cates

Deliberate Risk Assessment-Hazard Summary

4 September 2021

Hazard	Mitigation	Post Risk
Viral Transmission Mitigations, Communicable Disease	Maintain awareness of health, perform self checks, maintain social distancing, wear face coverings when indoors or when social distancing cannot be maintained. Report and isolate if feeling symptomatic. Coordinate with Okanogan County Public Health for testing, reporting and isolation as needed. Conduct testing of personnel with exposure to known positive cases.	Low
Extraction Time	Identify medivac sites and helispots. Initiate ground transport to accident site. Identify EMT/EMTP from resources assigned to division. Provide line qualified paramedics to each division as available. Review IWI protocol to ensure familiarity. Utilize civilian medivac as treatment/timing dictates. Evaluate on-going need for repositioning medical personnel.	High
Heavy Equipment	Post lookouts around equipment work areas. Establish communications with equipment boss and operator. Do not work down slope from equipment. Familiarize crews with specialty equipment and processes.	High
Hazard Trees	Use avoidance to limit exposure time. Snag ahead to avoid exposure. Use qualified fallers, blasting, or alternate methods if needed. Conduct on-going risk analysis of all work areas. Follow Hazard Tree Safety Guidelines (IRPG page 22).	High
Aircraft	Utilize Air Attack. Ensure all resources are a safe distance from all bucket and retardant drops. Establish LCES. Utilize air to ground primary radio channel. Reference IRPG (Safe aircraft operations pg. 56-58). Ensure IA resources have coordination with unassigned local air resources to provide deconfliction.	High
Steep Terrain/Gravity	Do not work crews above or below each other. Post lookouts for rolling material. Watch footing in loose soil, rock and around vegetation. Do not work below heavy equipment. Scout and identify travel routes. Establish LCES.	Moderate
Physical Factors	Maintain hydration schedule. Closely monitor work rate and implement rest periods. Maintain nutrition. Ensure adequate work/rest.	Moderate
Environmental Factors	Assign medical personnel to camp. Assess for known allergies and report to medical personnel. Obtain Bee Bopper/wasp spray and yellow jacket traps. Maintain an awareness of livestock. Keep an eye out for wildlife including bears, cougars, and rattlesnakes.	Moderate
Fire Behavior	Be aware of burn windows and weather impacts and min/max RH for flashy fuels/local conditions. Be aware of increased fire behavior and concerns specific to thunderstorm safety (IRPG p. 21). Report changes to FBAN and IMET. Include thunderstorm safety message in IAP.	Moderate
Unburned Fuels/Firing Ops	Establish LCES. Ensure management action points are implemented and followed. Weather updates as needed during burning operations. Locate indirect firelines to minimize the amount of unburned fuels. Follow Interagency Ignition Guide. Ensure communications between all firing operations. Establish road security at all firing sites. Follow approved firing plan for unburned fuels.	Moderate
Transportation	Signing of all incident roads that provide access to divisions. Daily updated travel plan maps. Practice defensive driving. In local communities obey the posted speed limits. Use reader boards to control entry as needed. Identify and evaluate contingency and alternate escape and travel routes.	Moderate
Communication	Evaluate for dead zones prior to engagement. Utilize human repeaters as needed. Ensure accountability of resources in problem areas.	Low
Public Interaction	Place new road closures as necessary and maintain current closures. Maintain awareness of evacuation areas and provide accurate information dissemination.	Low

Division/Group Assignment List (ICS 204 WF)
Controlled Unclassified Information//Basic

1. Incident Name:				3.		
WALKER CREEK & CHICKADEE CREEK				Branch: WALKER	Division/Group A/F	
2. Operational Period: DAY						
Date/Time From: 09/04/2021 0600 SAT		Date/Time To: 09/04/2021 1800 SAT				
4. Operations Personnel						
OPERATIONS CHIEF		AARON ROWE JEROMY WILSON (T); MIKE DAVIS (T)		BRANCH DIRECTOR		JERRAN FLINDERS
SAFETY OFFICER		TROY CORN; JACK CATES		DIVISION/GROUP SUPERVISOR		JASON EMHOFF
5. Resources Assigned this Period						
Strike Team / Task Force / Resource Designator	LWD	Leader	Number Persons	Drop Off PT./Time	Pick Up PT./Time	
O-436 SOF2	09/13	TAIJA CORSO	1	DP-354/0600	DP-354/1800	
O-350 TFLD (T)	09/06	CORY FISCHER	1	DP-354/0600	DP-354/1800	
O-477.1 TFLD (LOAN)	09/04	ROBERT COTA	1	DP-354/0600	DP-354/1800	
O-422 SMOD REPUBLIC C-201 (LOAN)	09/06	BRAD FREDRICKSON	10	DP-354/0600	DP-354/1800	
O-477 SMOD BOXELDER JOB CORPS (LOAN)	09/04	KEVIN ARGUETA	10	DP-354/0600	DP-354/1800	
E-123 ENG4 HI COUNTRY	09/09	TYLER STEVENSON	3	DP-354/0600	DP-354/1800	
E-217 ENG6 AXCESS FIRE	09/04	KEN VIRDEN	3	DP-354/0600	DP-354/1800	
E-218 ENG4 IDAHO HEATSEEKER 19	09/04	CASEY JOHNSON	3	DP-354/0600	DP-354/1800	
E-256 ENG5 WILD FIRE SERVICES	09/07	JAMIE RODOM	3	DP-354/0600	DP-354/1800	
E-284 ENG6 REPUBLIC E622 (IA)	09/06	GABE GIDDINGS	4	DP-354/0600	DP-354/1800	
E-174 WTS2 STOTTS CONSTRUCTION	09/11	DAVID HARCOURT	1	DP-354/0600	DP-354/1800	
E-1S DOZ3 JONES LOGGING	09/11	JASON JONES	1	DP-354/0600	DP-354/1800	
E-356 AMR AMBU 3 (ALS)	09/14	NATE GATES	2	DP-354/0600	DP-354/1800	
O-393 EMPF	09/06	ROSS BYRD	1	DP-354/0600	DP-354/1800	
8. Division/Group Communication Summary						
Function	Channel	RX Frequency N/W	RX Tone/NAC	TX Frequency N/W	TX Tone/NAC	Mode
COMMAND	1	170.0625	114.8	162.1750	114.8	A
COMMAND	2	170.3125	114.8	167.8375	114.8	A
COMMAND	3	170.4500	114.8	168.1000	114.8	A
COMMAND	4	172.5375	114.8	163.5500	114.8	A
TACTICAL	6	168.0500	114.8	168.0500	114.8	A
AIR TO GROUND	15	168.1375		168.1375		A
9. Prepared By (Resource Unit Leader)			Approved By (Planning Section Chief)		Date	Time
JILL JOHNSON			MARGE HUTCHINSON		09/03/2021	2000

Division/Group Assignment List (ICS 204 WF)
Controlled Unclassified Information//Basic

1. Incident Name:				3.		
WALKER CREEK & CHICKADEE CREEK				Branch: WALKER	Division/Group A/F	
2. Operational Period: DAY						
Date/Time From: 09/04/2021 0600 SAT		Date/Time To: 09/04/2021 1800 SAT				
4. Operations Personnel						
OPERATIONS CHIEF		AARON ROWE JEROMY WILSON (T); MIKE DAVIS (T)		BRANCH DIRECTOR		JERRAN FLINDERS
SAFETY OFFICER		TROY CORN; JACK CATES		DIVISION/GROUP SUPERVISOR		JASON EMHOFF
5. Resources Assigned this Period						
Strike Team / Task Force / Resource Designator	LWD	Leader	Number Persons	Drop Off PT./Time	Pick Up PT./Time	
6. Control Operations/Work Assignments:						
<p>TASK: Secure fire line within its existing footprint. Patrol and mop up as necessary to prevent fire escape. PURPOSE: Protect property and natural resources. END STATE: Fire is contained. Structures and private property are no longer threatened.</p>						
7. Special Instructions:						
<p>Backhaul all unnecessary equipment and supplies. GPS all pump locations.</p> <p>Notify READ if cultural materials are found during mop up. Leave in place, flag and GPS. READs (D. Pearson, M. Wilson & A. Miller) will notify DIVS when entering or leaving the division.</p>						
8. Division/Group Communication Summary						
Function	Channel	RX Frequency N/W	RX Tone/NAC	TX Frequency N/W	TX Tone/NAC	Mode
COMMAND	1	170.0625	114.8	162.1750	114.8	A
COMMAND	2	170.3125	114.8	167.8375	114.8	A
COMMAND	3	170.4500	114.8	168.1000	114.8	A
COMMAND	4	172.5375	114.8	163.5500	114.8	A
TACTICAL	6	168.0500	114.8	168.0500	114.8	A
AIR TO GROUND	15	168.1375		168.1375		A
9. Prepared By (Resource Unit Leader)			Approved By (Planning Section Chief)		Date	Time
JILL JOHNSON			MARGE HUTCHINSON		09/03/2021	2000

Division/Group Assignment List (ICS 204 WF)
Controlled Unclassified Information//Basic

1. Incident Name:				3.		
WALKER CREEK & CHICKADEE CREEK				Branch: WALKER	Division/Group H	
2. Operational Period: DAY						
Date/Time From: 09/04/2021 0600 SAT		Date/Time To: 09/04/2021 1800 SAT				
4. Operations Personnel						
OPERATIONS CHIEF		AARON ROWE JEROMY WILSON (T); MIKE DAVIS (T)		BRANCH DIRECTOR		JERRAN FLINDERS
SAFETY OFFICER		TROY CORN; JACK CATES		DIVISION/GROUP SUPERVISOR		MATT KENNEDY
5. Resources Assigned this Period						
Strike Team / Task Force / Resource Designator	LWD	Leader	Number Persons	Drop Off PT./Time	Pick Up PT./Time	
O-436 SOF2	09/13	TAIJA CORSO	1	DP-354/0600	DP-354/1800	
O-342 TFLD	09/05	JEFF MEADOWS	1	DP-354/0600	DP-354/1800	
O-351 TFLD (T)	09/05	JADE DRAUSE	1	DP-354/0600	DP-354/1800	
C-82 HC2 NORTH REFORESTATION CO	09/09	JOSE RINCON	20	DP-354/0600	DP-354/1800	
C- HC2I TONASKET CR 93 (LOAN)			16	DP-354/0600	DP-354/1800	
E-6S ENG6 WORK HORSE	09/07	TYE STRAIGHT	2	DP-354/0600	DP-354/1800	
E-129 ENG6 TONASKET E691	09/16	TAYLOR ORTEG	3	DP-354/0600	DP-354/1800	
E-216 ENG3 TFD-2301	09/16	MICHAEL JOHNSON	3	DP-354/0600	DP-354/1800	
E-5011 ENG6 COLORADO E681	09/09	CHAD BAKKEN	5	DP-354/0600	DP-354/1800	
E-297 WT SILVER NICKEL	09/09	CASEY SILVERTON	1	DP-354/0600	DP-354/1800	
E-373 WTS2 PECN 4 - T43	09/17	JOEL HOISINGTON	1	DP-354/0600	DP-354/1800	
E-80 DOZ3 MCMILLAN CONSTRUCTION	09/06	DOUG MCMILLAN	2	DP-354/0600	DP-354/1800	
E-131 EXCA (MINI) TONASKET RD	09/04	DENISON/ WILLIAMS	2	DP-354/0600	DP-354/1800	
E-104 UTV ADVENTURE SPORT		-- UNSTAFFED --		DP-354/0600	DP-354/1800	
O-245 EMPF	09/06	RICHARD SEWELL	1	DP-354/0600	DP-354/1800	
8. Division/Group Communication Summary						
Function	Channel	RX Frequency N/W	RX Tone/NAC	TX Frequency N/W	TX Tone/NAC	Mode
COMMAND	1	170.0625	114.8	162.1750	114.8	A
COMMAND	2	170.3125	114.8	167.8375	114.8	A
COMMAND	3	170.4500	114.8	168.1000	114.8	A
COMMAND	4	172.5375	114.8	163.5500	114.8	A
TACTICAL	8	168.6000	114.8	168.6000	114.8	A
AIR TO GROUND	15	168.1375		168.1375		A
9. Prepared By (Resource Unit Leader)			Approved By (Planning Section Chief)		Date	Time
JILL JOHNSON			MARGE HUTCHINSON		09/03/2021	2000

Division/Group Assignment List (ICS 204 WF)
Controlled Unclassified Information//Basic

1. Incident Name:				3.		
WALKER CREEK & CHICKADEE CREEK				Branch: WALKER	Division/Group H	
2. Operational Period: DAY						
Date/Time From: 09/04/2021 0600 SAT		Date/Time To: 09/04/2021 1800 SAT				
4. Operations Personnel						
OPERATIONS CHIEF		AARON ROWE JEROMY WILSON (T); MIKE DAVIS (T)		BRANCH DIRECTOR		JERRAN FLINDERS
SAFETY OFFICER		TROY CORN; JACK CATES		DIVISION/GROUP SUPERVISOR		MATT KENNEDY
5. Resources Assigned this Period						
Strike Team / Task Force / Resource Designator	LWD	Leader	Number Persons	Drop Off PT./Time	Pick Up PT./Time	
6. Control Operations/Work Assignments:						
<p>TASK: Secure fire line within its existing footprint. Patrol and mop up as necessary to prevent fire escape. PURPOSE: Protect property and natural resources. END STATE: Fire is contained. Structures and private property are no longer threatened.</p>						
7. Special Instructions:						
<p>Backhaul all unnecessary equipment and supplies. GPS all pump locations.</p> <p>Notify READ if cultural materials are found during mop up. Leave in place, flag and GPS. READs (D. Pearson, M. Wilson & A. Miller) will notify DIVS when entering or leaving the division.</p>						
8. Division/Group Communication Summary						
Function	Channel	RX Frequency N/W	RX Tone/NAC	TX Frequency N/W	TX Tone/NAC	Mode
COMMAND	1	170.0625	114.8	162.1750	114.8	A
COMMAND	2	170.3125	114.8	167.8375	114.8	A
COMMAND	3	170.4500	114.8	168.1000	114.8	A
COMMAND	4	172.5375	114.8	163.5500	114.8	A
TACTICAL	8	168.6000	114.8	168.6000	114.8	A
AIR TO GROUND	15	168.1375		168.1375		A
9. Prepared By (Resource Unit Leader)			Approved By (Planning Section Chief)		Date	Time
JILL JOHNSON			MARGE HUTCHINSON		09/03/2021	2000

Division/Group Assignment List (ICS 204 WF)
Controlled Unclassified Information//Basic

1. Incident Name:				3.		
WALKER CREEK & CHICKADEE CREEK				Branch: WALKER	Division/Group Q	
2. Operational Period: DAY						
Date/Time From: 09/04/2021 0600 SAT		Date/Time To: 09/04/2021 1800 SAT				
4. Operations Personnel						
OPERATIONS CHIEF		AARON ROWE JEROMY WILSON (T); MIKE DAVIS (T)		BRANCH DIRECTOR		JERRAN FLINDERS
SAFETY OFFICER		TROY CORN; JACK CATES		DIVISION/GROUP SUPERVISOR		MATT TRAYNHAM JAMES DICKINSON (T)
5. Resources Assigned this Period						
Strike Team / Task Force / Resource Designator	LWD	Leader	Number Persons	Drop Off PT./Time	Pick Up PT./Time	
O-436 SOF2	09/13	TAIJA CORSO	1	DP-372/0600	DP-372/1800	
O-479 TFLD	09/17	DANIELLE SPENDLOVE	1	DP-372/0600	DP-372/1800	
O-482 HEQB (T)	09/15	ADIN SIMMONS	1	DP-372/0600	DP-372/1800	
O-483 HEQB	09/15	IAN MCLELLAND	1	DP-372/0600	DP-372/1800	
E-130 ENG6 TONASKET RD - E692 (E692) (WA- NEC)	09/15	JEFFREY BABB	3	DP-372/0600	DP-372/1800	
E-361 ENG6 AEGIS LOGISTICS	09/16	SHAILEE EVENS	2	DP-372/0600	DP-372/1800	
E-362 ENG5 SPFN VALLEY - BRUSH 3	09/16	RAY MOECKEL	2	DP-372/0600	DP-372/1800	
E-365 ENG5 OSPREY WILDFIRE	09/15	JACOB LANE	3	DP-372/0600	DP-372/1800	
E-366 ENG4 RAINIER WILDFIRE	09/15	MICHAEL SUTTON	3	DP-372/0600	DP-372/1800	
E-181 DOZ3 MC NALL CONSTRUCTION	09/08	ADAM MCNALL	2	DP-372/0600	DP-372/1800	
E-31C FEL1 NORTH PINE	09/11	SCOTT HUGHES	1	DP-372/0600	DP-372/1800	
E-142 FEL1 WILL LOGGING & CONSTRUCTIO	09/09	ADAM BAKER	1	DP-372/0600	DP-372/1800	
E-113 SKG2 YELLOW JACKET FIRE EQUIP	09/08	NICK BADENHOP	2	DP-372/0600	DP-372/1800	
E-139 SKG1 SOFT TRACK ATTACK	09/13	HEATHER GUTHRIE	2	DP-372/0600	DP-372/1800	
E-3C SKD1 WILL LOGGING & CONSTR	09/07	ROGER SMITH	1	DP-372/0600	DP-372/1800	
E-277 MAST SWEDBERG CONTRACTING CORP.	09/09	STEVEN MEDDOCK	2	DP-372/0600	DP-372/1800	
8. Division/Group Communication Summary						
Function	Channel	RX Frequency N/W	RX Tone/NAC	TX Frequency N/W	TX Tone/NAC	Mode
COMMAND	1	170.0625	114.8	162.1750	114.8	A
COMMAND	2	170.3125	114.8	167.8375	114.8	A
COMMAND	3	170.4500	114.8	168.1000	114.8	A
COMMAND	4	172.5375	114.8	163.5500	114.8	A
TACTICAL	11	168.2500	114.8	168.2500	114.8	A
AIR TO GROUND	15	168.1375		168.1375		A
9. Prepared By (Resource Unit Leader)		Approved By (Planning Section Chief)		Date	Time	
JILL JOHNSON		MARGE HUTCHINSON		09/03/2021	2000	

Division/Group Assignment List (ICS 204 WF)
Controlled Unclassified Information//Basic

1. Incident Name:				3.		
WALKER CREEK & CHICKADEE CREEK				Branch: WALKER	Division/Group Q	
2. Operational Period: DAY						
Date/Time From: 09/04/2021 0600 SAT		Date/Time To: 09/04/2021 1800 SAT				
4. Operations Personnel						
OPERATIONS CHIEF		AARON ROWE JEROMY WILSON (T); MIKE DAVIS (T)		BRANCH DIRECTOR		JERRAN FLINDERS
SAFETY OFFICER		TROY CORN; JACK CATES		DIVISION/GROUP SUPERVISOR		MATT TRAYNHAM JAMES DICKINSON (T)
5. Resources Assigned this Period						
Strike Team / Task Force / Resource Designator		LWD	Leader	Number Persons	Drop Off PT./Time	Pick Up PT./Time
E-200 MAST BRUCE YOUNG LOGGING		09/07	MATT MCLAREN	2	DP-372/0600	DP-372/1800
E-272 EXCA NORTH COLUMBIA ENTERPRISES		09/07	SCOTT BUTTERFIELD	2	DP-372/0600	DP-372/1800
E-110 UTV ADVENTURE SPORT			-- UNSTAFFED --		DP-372/0600	DP-372/1800
O-221 EMPF		09/05	DAVE BRIDGES	1	DP-372/0600	DP-372/1800
6. Control Operations/Work Assignments:						
<p>Task: Monitor fire progression and determine trigger points for firing indirect line. Evaluate the need for firing based on current, expected, and predicted weather and fuels conditions considering seasonal severity. Continue to secure fire line west of the 300 road towards DIV Q/H break. Prepare a firing plan.</p> <p>Purpose: Exposure and firefighter safety is minimized with all primary control features completed.</p> <p>End state: Fire Progression is monitored. Control features are ready and plan is ready to execute and hold indirect fire line. Fire is contained on the prepared indirect line after firing operations are complete.</p>						
7. Special Instructions:						
<p>Backhaul all unnecessary equipment and supplies. GPS all pump locations. Notify READ if cultural materials are found during mop up. Leave in place, flag and GPS. READs (D. Pearson, M. Wilson & A. Miller) will notify DIVS when entering or leaving the division.</p>						
8. Division/Group Communication Summary						
Function	Channel	RX Frequency N/W	RX Tone/NAC	TX Frequency N/W	TX Tone/NAC	Mode
COMMAND	1	170.0625	114.8	162.1750	114.8	A
COMMAND	2	170.3125	114.8	167.8375	114.8	A
COMMAND	3	170.4500	114.8	168.1000	114.8	A
COMMAND	4	172.5375	114.8	163.5500	114.8	A
TACTICAL	11	168.2500	114.8	168.2500	114.8	A
AIR TO GROUND	15	168.1375		168.1375		A
9. Prepared By (Resource Unit Leader)			Approved By (Planning Section Chief)		Date	Time
JILL JOHNSON			MARGE HUTCHINSON		09/03/2021	2000

Division/Group Assignment List (ICS 204 WF)
Controlled Unclassified Information//Basic

1. Incident Name:				3.		
WALKER CREEK & CHICKADEE CREEK				Branch: WALKER	Division/Group T	
2. Operational Period: DAY						
Date/Time From: 09/04/2021 0600 SAT		Date/Time To: 09/04/2021 1800 SAT				
4. Operations Personnel						
OPERATIONS CHIEF		AARON ROWE JEROMY WILSON (T); MIKE DAVIS (T)		BRANCH DIRECTOR		JERRAN FLINDERS
SAFETY OFFICER		TROY CORN; JACK CATES		DIVISION/GROUP SUPERVISOR		MICHAEL JACKSON SETH JONES (T)
5. Resources Assigned this Period						
Strike Team / Task Force / Resource Designator	LWD	Leader	Number Persons	Drop Off PT./Time	Pick Up PT./Time	
O-436 SOF2	09/13	TAIJA CORSO	1	DP-372/0600	DP-372/1800	
O-474 TFLD	09/08	AL MCGUIRE	1	DP-372/0600	DP-372/1800	
O-476 TFLD (T)	09/09	CONNOR ENGLAND	1	DP-372/0600	DP-372/1800	
O-495 HEQB	09/14	TOM SHEDD	1	DP-372/0600	DP-372/1800	
O-23 FMOD BAILEY LOGGING	09/10	TAYLOR EVANS	2	DP-372/0600	DP-372/1800	
C-88 HC2 I-S-A SERVICES	09/15	GUSTAVO BUENO	20	DP-372/0600	DP-372/1800	
C-89 HC2 R & R CONTRACTING	09/15	CRISTOBAL ROCHA	20	DP-372/0600	DP-372/1800	
E-115 ENG3 OUTBACK FIREFIGHTING	09/06	SEAN WEST	3	DP-372/0600	DP-372/1800	
E-116 ENG6 TORCH FIRE AND SECURITY	09/08	TRINITY KRIVANEC	3	DP-372/0600	DP-372/1800	
E-338 ENG6 AEGIS LOGISTICS	09/11	ROY VARNEY	3	DP-372/0600	DP-372/1800	
E-339 ENG6 BLACK PINE CONTRACTING	09/12	JOE BEATTY	3	DP-372/0600	DP-372/1800	
E-340 ENG6 STCN 11 - B11-14	09/12	ZAK BEER	3	DP-372/0600	DP-372/1800	
E-357 ENG5 DNR AR 7403	09/15	DANIEL JAMES STRALSER	4	DP-372/0600	DP-372/1800	
E-23 WTS1 OROVILLE TRANSIT MIX	09/12	GORDON WOOLEY	3	DP-372/0600	DP-372/1800	
E-349 WTS2 SC RIVER LMS	09/13	TIM SCIVER	1	DP-372/0600	DP-372/1800	
8. Division/Group Communication Summary						
Function	Channel	RX Frequency N/W	RX Tone/NAC	TX Frequency N/W	TX Tone/NAC	Mode
COMMAND	1	170.0625	114.8	162.1750	114.8	A
COMMAND	2	170.3125	114.8	167.8375	114.8	A
COMMAND	3	170.4500	114.8	168.1000	114.8	A
COMMAND	4	172.5375	114.8	163.5500	114.8	A
TACTICAL	9	166.7250	114.8	166.7250	114.8	A
AIR TO GROUND	15	168.1375		168.1375		A
9. Prepared By (Resource Unit Leader)		Approved By (Planning Section Chief)		Date	Time	
JILL JOHNSON		MARGE HUTCHINSON		09/03/2021	2000	

Division/Group Assignment List (ICS 204 WF)
Controlled Unclassified Information//Basic

1. Incident Name:				3.		
WALKER CREEK & CHICKADEE CREEK				Branch: WALKER	Division/Group T	
2. Operational Period: DAY						
Date/Time From: 09/04/2021 0600 SAT		Date/Time To: 09/04/2021 1800 SAT				
4. Operations Personnel						
OPERATIONS CHIEF		AARON ROWE JEROMY WILSON (T); MIKE DAVIS (T)		BRANCH DIRECTOR		JERRAN FLINDERS
SAFETY OFFICER		TROY CORN; JACK CATES		DIVISION/GROUP SUPERVISOR		MICHAEL JACKSON SETH JONES (T)
5. Resources Assigned this Period						
Strike Team / Task Force / Resource Designator	LWD	Leader	Number Persons	Drop Off PT./Time	Pick Up PT./Time	
E-351 WTS2 TIMBERLINE TRUCKING	09/12	CALVIN GARRISON	1	DP-372/0600	DP-372/1800	
E-20C DOZ3 SILVER-NICKEL LOGGING	09/10	MATT CLOUGH	2	DP-372/0600	DP-372/1800	
E-335 SKG2 ALVORD FIRE SUPPRESSION	09/13	RANDY HOGLUND	1	DP-372/0600	DP-372/1800	
E-199 MAST EAGLE CAP	09/07	BEN FISCHER	2	DP-372/0600	DP-372/1800	
E-105 UTV ADVENTURE SPORT		-- UNSTAFFED --				
E-107 UTV ADVENTURE SPORT		-- UNSTAFFED --				
O-396.1 EMPF	09/04	MACK MARIN	1	DP-372/0600	DP-372/1800	
6. Control Operations/Work Assignments:						
TASK: Secure fire line within its existing footprint. Patrol and mop up as necessary to prevent fire escape. PURPOSE: Protect property and natural resources. END STATE: Fire is contained. Structures and private property are no longer threatened.						
7. Special Instructions:						
Backhaul all unnecessary equipment and supplies. GPS all pump locations. Notify READ if cultural materials are found during mop up. Leave in place, flag and GPS. READs (D. Pearson, M. Wilson & A. Miller) will notify DIVS when entering or leaving the division.						
8. Division/Group Communication Summary						
Function	Channel	RX Frequency N/W	RX Tone/NAC	TX Frequency N/W	TX Tone/NAC	Mode
COMMAND	1	170.0625	114.8	162.1750	114.8	A
COMMAND	2	170.3125	114.8	167.8375	114.8	A
COMMAND	3	170.4500	114.8	168.1000	114.8	A
COMMAND	4	172.5375	114.8	163.5500	114.8	A
TACTICAL	9	166.7250	114.8	166.7250	114.8	A
AIR TO GROUND	15	168.1375		168.1375		A
9. Prepared By (Resource Unit Leader)			Approved By (Planning Section Chief)		Date	Time
JILL JOHNSON			MARGE HUTCHINSON		09/03/2021	2000

Division/Group Assignment List (ICS 204 WF)
Controlled Unclassified Information//Basic

1. Incident Name:				3.		
WALKER CREEK & CHICKADEE CREEK				Branch:	Division/Group C	
2. Operational Period: DAY						
Date/Time From: 09/04/2021 0600 SAT		Date/Time To: 09/04/2021 1800 SAT				
4. Operations Personnel						
OPERATIONS CHIEF		AARON ROWE JEROMY WILSON (T); MIKE DAVIS (T)		BRANCH DIRECTOR		
SAFETY OFFICER		TROY CORN; JACK CATES		DIVISION/GROUP SUPERVISOR		BOB HINDS SUSAN GREENLEAF (T)
5. Resources Assigned this Period						
Strike Team / Task Force / Resource Designator	LWD	Leader	Number Persons	Drop Off PT./Time	Pick Up PT./Time	
O-465 SOF2	09/13	LEA WOFFORD	1	SPEARS RANCH/0600	SPEARS RANCH/1800	
O-377 TFLD	09/07	STEPHEN DECOOK	1	SPEARS RANCH/0600	SPEARS RANCH/1800	
O-423 TFLD (T)	09/09	KYLE BUCKMILLER	1	SPEARS RANCH/0600	SPEARS RANCH/1800	
O-457 HEQB (T)	09/10	AARON NELSON	1	SPEARS RANCH/0600	SPEARS RANCH/1800	
O-490 HEQB (T)	09/15	ERIC WEINKE	1	SPEARS RANCH/0600	SPEARS RANCH/1800	
O-9002 READ (LOAN)	09/08	SKYLER GOODRICH	1	SPEARS RANCH/0600	SPEARS RANCH/1800	
O-9006 READ (LOAN)	09/08	MATT SMITH	1	SPEARS RANCH/0600	SPEARS RANCH/1800	
O-247 FMOD BROTHERS FIRE LLC	09/05	TOM HOFFMAN	2	SPEARS RANCH/0600	SPEARS RANCH/1800	
C-90 HC2 STEELHEAD ENTERPRISES	09/15	JAKE PLACE	20	SPEARS RANCH/0600	SPEARS RANCH/1800	
C-9003 HC2I HIGHLANDS (LOAN) (R&R 9/4-9/5)		SETH SCHERTENLEIB	20	SPEARS RANCH/0600	SPEARS RANCH/1800	
E-255 ENG4 WILD FIRE SERVICES	09/07	STEVE KURVAINK	3	SPEARS RANCH/0600	SPEARS RANCH/1800	
E-336 ENG5 KALISPEL BRUSH-1	09/11	RYAN MARTIN	3	SPEARS RANCH/0600	SPEARS RANCH/1800	
E-337 ENG6 THE GENERAL	09/10	PAUL ANDERSON	2	SPEARS RANCH/0600	SPEARS RANCH/1800	
E-358 ENG6 ALDER CREEK FIRE	09/14	EDUARDO RODRIGUEZ	2	SPEARS RANCH/0600	SPEARS RANCH/1800	
E- ENG5 DNR ENG (LOAN)				SPEARS RANCH/0600	SPEARS RANCH/1800	
E- ENG5 DNR ENG (LOAN)				SPEARS RANCH/0600	SPEARS RANCH/1800	
8. Division/Group Communication Summary						
Function	Channel	RX Frequency N/W	RX Tone/NAC	TX Frequency N/W	TX Tone/NAC	Mode
COMMAND	1	170.0625	114.8	162.1750	114.8	A
COMMAND	2	170.3125	114.8	167.8375	114.8	A
COMMAND	3	170.4500	114.8	168.1000	114.8	A
COMMAND	4	172.5375	114.8	163.5500	114.8	A
TACTICAL	10	166.7750	114.8	166.7750	114.8	A
AIR TO GROUND	13	170.2625		170.2625		A
9. Prepared By (Resource Unit Leader)		Approved By (Planning Section Chief)		Date	Time	
JILL JOHNSON		MARGE HUTCHINSON		09/03/2021	2000	

Division/Group Assignment List (ICS 204 WF)
Controlled Unclassified Information//Basic

1. Incident Name:				3.		
WALKER CREEK & CHICKADEE CREEK				Branch:	Division/Group C	
2. Operational Period: DAY						
Date/Time From: 09/04/2021 0600 SAT		Date/Time To: 09/04/2021 1800 SAT				
4. Operations Personnel						
OPERATIONS CHIEF		AARON ROWE JEROMY WILSON (T); MIKE DAVIS (T)		BRANCH DIRECTOR		
SAFETY OFFICER		TROY CORN; JACK CATES		DIVISION/GROUP SUPERVISOR		BOB HINDS SUSAN GREENLEAF (T)
5. Resources Assigned this Period						
Strike Team / Task Force / Resource Designator		LWD	Leader	Number Persons	Drop Off PT./Time	Pick Up PT./Time
E- ENG5 DNR ENG (LOAN)					SPEARS RANCH/0600	SPEARS RANCH/1800
E- ENG5 DNR ENG (LOAN)					SPEARS RANCH/0600	SPEARS RANCH/1800
E- ENG5 DNR ENG (LOAN)					SPEARS RANCH/0600	SPEARS RANCH/1800
E- ENG5 DNR ENG (LOAN)					SPEARS RANCH/0600	SPEARS RANCH/1800
E-16C WTS2 S PEND OREILLE T33		09/08	PAUL HAA	1	SPEARS RANCH/0600	SPEARS RANCH/1800
E-136 WTS2 OVERWATCH		09/08	ANDY ROMERO	1	SPEARS RANCH/0600	SPEARS RANCH/1800
E-350 WTS2 JOE PEONE LOGGING		09/12	DUANE HALL	1	SPEARS RANCH/0600	SPEARS RANCH/1800
E-352 WTS2 H & H FIRE CONTRACTING		09/12	TOM FERRO	1	SPEARS RANCH/0600	SPEARS RANCH/1800
E-12C DOZ2 KENNETH & DIANE SASSE		09/05	BURT SASSE	2	SPEARS RANCH/0600	SPEARS RANCH/1800
E-201 DOZ3 HAVILLAH LOGGING CO		09/13	DAVID BURTON	1	SPEARS RANCH/0600	SPEARS RANCH/1800
E-14C EXCA WILL LOGGING & CONSTR		09/04	GARY WILLER	1	SPEARS RANCH/0600	SPEARS RANCH/1800
E-15C EXCA GASHO & GASHO		09/12	JUBLE MILLER	2	SPEARS RANCH/0600	SPEARS RANCH/1800
E-26 SKG1 WYEAST FORESTRY MANAGEMENT		09/14	BOYD GOLDFINCH	2	SPEARS RANCH/0600	SPEARS RANCH/1800
E-138 SKG1 SOFT TRACK ATTACK		09/06	JOSH COVEY	2	SPEARS RANCH/0600	SPEARS RANCH/1800
E-18C SKD2 RIDGELINE FORESTRY		09/13	MICHAEL GOETZ	2	SPEARS RANCH/0600	SPEARS RANCH/1800
E-21C SKD2 DOUBLE A LOGGING 1		09/08	SHAWN NIGG	1	SPEARS RANCH/0600	SPEARS RANCH/1800
8. Division/Group Communication Summary						
Function	Channel	RX Frequency N/W	RX Tone/NAC	TX Frequency N/W	TX Tone/NAC	Mode
COMMAND	1	170.0625	114.8	162.1750	114.8	A
COMMAND	2	170.3125	114.8	167.8375	114.8	A
COMMAND	3	170.4500	114.8	168.1000	114.8	A
COMMAND	4	172.5375	114.8	163.5500	114.8	A
TACTICAL	10	166.7750	114.8	166.7750	114.8	A
AIR TO GROUND	13	170.2625		170.2625		A
9. Prepared By (Resource Unit Leader)			Approved By (Planning Section Chief)		Date	Time
JILL JOHNSON			MARGE HUTCHINSON		09/03/2021	2000

Division/Group Assignment List (ICS 204 WF)
Controlled Unclassified Information//Basic

1. Incident Name:				3.		
WALKER CREEK & CHICKADEE CREEK				Branch:	Division/Group C	
2. Operational Period: DAY						
Date/Time From: 09/04/2021 0600 SAT		Date/Time To: 09/04/2021 1800 SAT				
4. Operations Personnel						
OPERATIONS CHIEF		AARON ROWE JEROMY WILSON (T); MIKE DAVIS (T)		BRANCH DIRECTOR		
SAFETY OFFICER		TROY CORN; JACK CATES		DIVISION/GROUP SUPERVISOR		BOB HINDS SUSAN GREENLEAF (T)
5. Resources Assigned this Period						
Strike Team / Task Force / Resource Designator		LWD	Leader	Number Persons	Drop Off PT./Time	Pick Up PT./Time
E-205 SKD2 HAVILLAH LOGGING		09/10	BRANDON SUTTON	1	SPEARS RANCH/0600	SPEARS RANCH/1800
E-204 MAST HAVILLAH LOGGIN		09/11	TIM KERSHNER	1	SPEARS RANCH/0600	SPEARS RANCH/1800
E-353 LOG PROCESSOR RIDGELINE FORESTRY		09/11	BOB KOEPL	2	SPEARS RANCH/0600	SPEARS RANCH/1800
E-368 LOG LOADER RIDGELINE FORESTRY		09/10	YANCEY EPPERSON	1	SPEARS RANCH/0600	SPEARS RANCH/1800
E-109 UTV ADVENTURE SPORT			-UNSTAFFED-			
E-190 UTV ADVENTURE SPORT RENTALS			-UNSTAFFED-			
E-55 AMBU PEND OREILLE AMBU 2 (ALS)		09/11	JOHNNY SYLVESTER	2	SPEARS RANCH/0600	SPEARS RANCH/1800
O-273 EMPF		09/06	KEVIN SMITH	1	SPEARS RANCH/0600	SPEARS RANCH/1800
6. Control Operations/Work Assignments:						
TASK: Secure fire line within its existing footprint. Patrol and mop up as necessary to prevent fire escape. PURPOSE: Protect property and natural resources. END STATE: Fire is contained. Structures and private property are no longer threatened.						
7. Special Instructions:						
Backhaul all unnecessary equipment and supplies. GPS all pump locations.						
8. Division/Group Communication Summary						
Function	Channel	RX Frequency N/W	RX Tone/NAC	TX Frequency N/W	TX Tone/NAC	Mode
COMMAND	1	170.0625	114.8	162.1750	114.8	A
COMMAND	2	170.3125	114.8	167.8375	114.8	A
COMMAND	3	170.4500	114.8	168.1000	114.8	A
COMMAND	4	172.5375	114.8	163.5500	114.8	A
TACTICAL	10	166.7750	114.8	166.7750	114.8	A
AIR TO GROUND	13	170.2625		170.2625		A
9. Prepared By (Resource Unit Leader)			Approved By (Planning Section Chief)		Date	Time
JILL JOHNSON			MARGE HUTCHINSON		09/03/2021	2000

Division/Group Assignment List (ICS 204 WF)
Controlled Unclassified Information//Basic

1. Incident Name:				3.		
WALKER CREEK & CHICKADEE CREEK				Branch:	Division/Group K/O	
2. Operational Period: DAY						
Date/Time From: 09/04/2021 0600 SAT		Date/Time To: 09/04/2021 1800 SAT				
4. Operations Personnel						
OPERATIONS CHIEF		AARON ROWE JEROMY WILSON (T); MIKE DAVIS (T)		BRANCH DIRECTOR		
SAFETY OFFICER		TROY CORN; JACK CATES		DIVISION/GROUP SUPERVISOR		CHET DIERINGER SAM STEINSHOUER (T)
5. Resources Assigned this Period						
Strike Team / Task Force / Resource Designator	LWD	Leader	Number Persons	Drop Off PT./Time	Pick Up PT./Time	
O-465 SOF2	09/13	LEA WOFFORD	1	SPEARS RANCH/0600	SPEARS RANCH/1800	
O-359 TFLD (T)	09/06	RYAN ROMERO	1	SPEARS RANCH/0600	SPEARS RANCH/1800	
O-376 TFLD	09/05	BENNY MENDOZA	1	SPEARS RANCH/0600	SPEARS RANCH/1800	
O-432 STEQ (T)	09/09	DAVID MORRILL	1	SPEARS RANCH/0600	SPEARS RANCH/1800	
C-71 HC2 TORRES CONTRACTING CREW-11	09/08	EMILIO MELGAREJO	20	SPEARS RANCH/0600	SPEARS RANCH/1800	
C-81 HC2 LAVA RIVER FORESTRY 4	09/09	JOSH MARTINEZ	20	SPEARS RANCH/0600	SPEARS RANCH/1800	
E-359 ENG6 PENC 2 BR25	09/15	STEVE HUGHES	2	SPEARS RANCH/0600	SPEARS RANCH/1800	
E-360 ENG3 ROGUE RIVER FIRE, WATER	09/15	TIM KELLER	3	SPEARS RANCH/0600	SPEARS RANCH/1800	
E- ENG5 DNR ENG (LOAN)			3	SPEARS RANCH/0600	SPEARS RANCH/1800	
E- ENG5 DNR ENG (LOAN)			3	SPEARS RANCH/0600	SPEARS RANCH/1800	
E- ENG5 DNR ENG (LOAN)			3	SPEARS RANCH/0600	SPEARS RANCH/1800	
E-6C WTS2 TOLLEFSON CONSTR	09/06	EVAN BEVIER	1	SPEARS RANCH/0600	SPEARS RANCH/1800	
E-22 WTS2 RAINS CONTRACTING	09/11	RON STODDARD	1	SPEARS RANCH/0600	SPEARS RANCH/1800	
E-176 WTS2 BTNG WILDFIRE	09/13	GEORGE THOMAS	1	SPEARS RANCH/0600	SPEARS RANCH/1800	
E-177 WTS1 DOUBLE A LOGGING	09/07	TONY BROWN	1	SPEARS RANCH/0600	SPEARS RANCH/1800	
8. Division/Group Communication Summary						
Function	Channel	RX Frequency N/W	RX Tone/NAC	TX Frequency N/W	TX Tone/NAC	Mode
COMMAND	1	170.0625	114.8	162.1750	114.8	A
COMMAND	2	170.3125	114.8	167.8375	114.8	A
COMMAND	3	170.4500	114.8	168.1000	114.8	A
COMMAND	4	172.5375	114.8	163.5500	114.8	A
TACTICAL	7	168.2000	114.8	168.2000	114.8	A
AIR TO GROUND	13	170.2625		170.2625		A
9. Prepared By (Resource Unit Leader)			Approved By (Planning Section Chief)		Date	Time
JILL JOHNSON			MARGE HUTCHINSON		09/03/2021	2000

Division/Group Assignment List (ICS 204 WF)
Controlled Unclassified Information//Basic

1. Incident Name:				3.		
WALKER CREEK & CHICKADEE CREEK				Branch:	Division/Group K/O	
2. Operational Period: DAY						
Date/Time From: 09/04/2021 0600 SAT		Date/Time To: 09/04/2021 1800 SAT				
4. Operations Personnel						
OPERATIONS CHIEF		AARON ROWE JEROMY WILSON (T); MIKE DAVIS (T)		BRANCH DIRECTOR		
SAFETY OFFICER		TROY CORN; JACK CATES		DIVISION/GROUP SUPERVISOR		CHET DIERINGER SAM STEINSHOUER (T)
5. Resources Assigned this Period						
Strike Team / Task Force / Resource Designator	LWD	Leader	Number Persons	Drop Off PT./Time	Pick Up PT./Time	
E-26C DOZ3 DOUBLE A LOGGING	09/13	TYLER ACORD	2	SPEARS RANCH/0600	SPEARS RANCH/1800	
E-25C EXCA DOUBLE A LOGGING	09/09	TOM ACORD	1	SPEARS RANCH/0600	SPEARS RANCH/1800	
E-197 SKG3 TUNK CREEK LLC	09/04	DYLAN GREEN	2	SPEARS RANCH/0600	SPEARS RANCH/1800	
E-22C SKD2 DOUBLE A LOGGING	09/10	BRYAN ACORD	1	SPEARS RANCH/0600	SPEARS RANCH/1800	
E-112 SKDS SOFTTRACK ATTACK	09/09	PATRICK PRICE	2	SPEARS RANCH/0600	SPEARS RANCH/1800	
E-140 SKDS SPENCER LOGGING LLC	09/02	COLE SPENCER	2			
E-348 SKD1 TURLEY LOGGING	09/12	CODY HUBBARD	2	SPEARS RANCH/0600	SPEARS RANCH/1800	
E-354 LOG DOUBLE A LOG LOADER	09/11	ROY ACORD	2	SPEARS RANCH/0600	SPEARS RANCH/1800	
E-355 LOG PROCESSOR DOUBLE A	09/11	JERAMIAH BOARDWELL	2	SPEARS RANCH/0600	SPEARS RANCH/1800	
E-108 UTV ADVENTURE SPORT		-- UNSTAFFED --		SPEARS RANCH/0600	SPEARS RANCH/1800	
O-461 EMPF	09/05	KYLE MEADE	1	SPEARS RANCH/0600	SPEARS RANCH/1800	
8. Division/Group Communication Summary						
Function	Channel	RX Frequency N/W	RX Tone/NAC	TX Frequency N/W	TX Tone/NAC	Mode
COMMAND	1	170.0625	114.8	162.1750	114.8	A
COMMAND	2	170.3125	114.8	167.8375	114.8	A
COMMAND	3	170.4500	114.8	168.1000	114.8	A
COMMAND	4	172.5375	114.8	163.5500	114.8	A
TACTICAL	7	168.2000	114.8	168.2000	114.8	A
AIR TO GROUND	13	170.2625		170.2625		A
9. Prepared By (Resource Unit Leader)			Approved By (Planning Section Chief)		Date	Time
JILL JOHNSON			MARGE HUTCHINSON		09/03/2021	2000

Division/Group Assignment List (ICS 204 WF)
Controlled Unclassified Information//Basic

1. Incident Name:			3.			
WALKER CREEK & CHICKADEE CREEK			Branch:		Division/Group	
2. Operational Period: DAY					K/O	
Date/Time From: 09/04/2021 0600 SAT		Date/Time To: 09/04/2021 1800 SAT				
4. Operations Personnel						
OPERATIONS CHIEF		AARON ROWE JEROMY WILSON (T); MIKE DAVIS (T)		BRANCH DIRECTOR		
SAFETY OFFICER		TROY CORN; JACK CATES		DIVISION/GROUP SUPERVISOR		CHET DIERINGER SAM STEINSHOUER (T)
5. Resources Assigned this Period						
Strike Team / Task Force / Resource Designator		LWD	Leader	Number Persons	Drop Off PT./Time	Pick Up PT./Time
6. Control Operations/Work Assignments:						
TASK: Secure fire line within its existing footprint. Patrol and mop up as necessary to prevent fire escape. PURPOSE: Protect property and natural resources. END STATE: Fire is contained. Structures and private property are no longer threatened.						
7. Special Instructions:						
Backhaul all unnecessary equipment and supplies. GPS all pump locations.						
8. Division/Group Communication Summary						
Function	Channel	RX Frequency N/W	RX Tone/NAC	TX Frequency N/W	TX Tone/NAC	Mode
COMMAND	1	170.0625	114.8	162.1750	114.8	A
COMMAND	2	170.3125	114.8	167.8375	114.8	A
COMMAND	3	170.4500	114.8	168.1000	114.8	A
COMMAND	4	172.5375	114.8	163.5500	114.8	A
TACTICAL	7	168.2000	114.8	168.2000	114.8	A
AIR TO GROUND	13	170.2625		170.2625		A
9. Prepared By (Resource Unit Leader)			Approved By (Planning Section Chief)		Date	Time
JILL JOHNSON			MARGE HUTCHINSON		09/03/2021	2000

AIR OPERATIONS SUMMARY

Controlled Unclassified Information//Basic

PREPARED BY: Greg Reser AOB (t)

PREPARED DATE/TIME: 9/3/2021 1900

1. INCIDENT NAME: Walker Cr. /Chickadee Cr.		2. OPERATIONAL PERIOD DATE: 9/4/21 START TIME: 0800 END TIME: 2000 SUNRISE: 0617 SUNSET: 1936 Pumpkin 2006			
3. REMARKS (Safety Notes, Hazards, Air Operations Special Equipment, etc.):				4. Ready Alert aircraft: Order ALS air ambulance (Lifeflight) through NEWICC Dispatch. Closest ALS helicopters are out of Brewster, WA with a 25 min flight time to the Walker fire. <u>Special remarks:</u> Wenatchee Short Haul 3JR at Lake Chelan, WA Airport. Response time roughly 45min to incident. Order thru AOB. Review Military Training Route activity and status each morning prior to missions. <u>Aviation Support Equipment:</u> Helibase Support Trailer E-209 @ Omak Helibase <u>Email cost to:</u> WalkerSpur.Aviation@gmail.com	
5. Helibase location Omak (OMK) 48-27.864617N 119-31.083250W Elev: 1,304' Base Phone: 360-489-7654 Unicom: OMK: 122.8 Tonasket W01: 122.9		6. TFR information Walker 1/7944 7NM SFC-9500FT Active: 0700-2100 Chickadee 1/7942 5NM SFC-9500FT Active: 0700-2100			
7. FIXED WING		SEATS/Fireboss: Available out of Omak. Order through NEWICC. ATGS Platform: Order as needed through NEWICC.			
8. PERSONNEL					
		Phone	9. FREQUENCIES	FM	AM
HEBM Virgil Lookingback		928-899-0810	A/G Walker Pri	168.1375	
HEBM (t) Dylan Kane		609-651-7431	A/G Walker Sec	169.5625	
			A/G Chickadee Pri	170.2625	
			TFR 1/9445 Walker		118.125
			A/A Walker Rotor		126.3500
			TFR 1/9449 Chickadee		118.775
NE Washington Dispatch (NEWICC)		509-685-6900	A/A Chickadee Rotor		126.6250
			A/G Ignitions Discreet	167.8375	
Colville UAO Ben Renfro		541-589-0452	DNR Flight Follow	151.3475 Tx(136.5)	
			Air Guard	168.6250 Tx(110.9)	

10. Helicopters	TY	MAKE/MODEL	BASE	START	AVAIL	REMARKS
N7CU (A-174) / Hogue	1	CH-47D	OMK	0800	0830	EU / Bucket
N12HX (A-204) / Carpenter	3	Bell 407	OMK	0800	0830	EU / HMGB +9

Mission Requests:

Air Attack: Requested through NEWICC as needed.

Lead Plane/Airtankers: Requested through NEWICC as needed.

Helicopters: Requested through Omak Helibase.

Approved By: Mike Davis AOB

INCIDENT RADIO COMMUNICATIONS PLAN (ICS 205)

Controlled Unclassified Information//Basic

1. Incident Name:	2. Date/Time Prepared:	3. Operational Period: DAY	
WALKER CREEK & CHICKADEE CREEK	Date: 09/03/2021 Time: 2000	Date/Time From: 09/04/2021 0600 SAT	Date/Time To: 09/04/2021 1800 SAT

4. Basic Radio Channel Use:

Zone Group	Ch #	Function	Channel Name/Trunked Radio System Talkgroup	Assignment	RX Freq	RX Tone/NAC	TX Freq	TX Tone/NAC	Mode (A,D, or M)	Remarks
	1	COMMAND	CMD1	ALL RESOURCES	170.0625	114.8	162.1750	114.8	A	LINKED TO CMD2, CMD3 & CMD4
	2	COMMAND	CMD2	ALL RESOURCES	170.3125	114.8	167.8375	114.8	A	LINKED TO CMD1, CMD 3 & CMD4
	3	COMMAND	CMD3	ALL RESOURCES	170.4500	114.8	168.1000	114.8	A	LINKED TO CMD1, CMD2 & CMD4
	4	COMMAND	CMD 4	ALL RESOURCES	172.5375	114.8	163.5500	114.8	A	LINKED TO CMD1, CMD2 & CMD3
	5	COMMAND	DNR TON	ALL RESOURCES	159.3675	118.8	151.2575	156.7	A	DNR TONASKET DISPATCH
	6	TACTICAL	TAC 6	DIV A / F	168.0500	114.8	168.0500	114.8	A	NIFC TAC
	7	TACTICAL	TAC 7	DIV K / O	168.2000	114.8	168.2000	114.8	A	NIFC TAC
	8	TACTICAL	TAC 8	DIV H	168.6000	114.8	168.6000	114.8	A	NIFC TAC
	9	TACTICAL	TAC 9	DIV T	166.7250	114.8	166.7250	114.8	A	NIFC TAC
	10	TACTICAL	TAC 10	DIV C	166.7750	114.8	166.7750	114.8	A	NIFC TAC
	11	TACTICAL	TAC 11	DIV Q	168.2500	114.8	168.2500	114.8	A	NIFC TAC
	12	TACTICAL	RED NET	ALL RESOURCES	153.8300		153.8300	156.7	A	EMS AMBU/AIR UNITS
	13	AIR TO GROUND	A/G CHICK	A/G CHICKADEE	170.2625		170.2625		A	NIFC A/G
	14	AIR TO GROUND	A/G SECONDARY	A/G SECONDARY	169.5625		169.5625		A	NIFC A/G
	15	AIR TO GROUND	A/G WALKER	A/G WALKER	168.1375		168.1375		A	NIFC A/G
	16	AIR GUARD	AIRGUARD	ALL RESOURCES	168.6250		168.6250	110.9	A	EMERGENCY USE ONLY

5. Special Instructions: LAST CLONE Revision: WALKER082821. Communications Phone # (206) 473-9053

6. Prepared By (Communications Unit Leader)	Name: MISSY PARKER	Signature: <i>Missy Parker</i>
ICS 205	IAP Page	Date/Time: 09/03/2021 2000

Controlled Unclassified Information//Basic

WALKER CREEK FIRE DEMOB LIST

Saturday September 4, 2021

DEMOB INSTRUCTIONS

Paperless and electronic demobilization will be used to the extent possible for all resources. **PLEASE LOOK closely at the Fire Name and Resource Number.** All finance documents will be emailed and signed virtually. Ensure all Final CTR's and Shift Tickets **ARE KEPT UP TO DATE** with Finance. Please be **PATIENT** as the phone lines are limited the and it takes a little longer for the virtual process. For **FLIGHT** arrangements, call 206-473-1425 at least 48 hours before you demob.

DEMOB STEPS

(Must Be Done In Order)

1. If you have any items checked out by Supply and Communications, proceed to those areas to turn in equipment. If you don't have any items checked out, proceed to NEXT STEP.
2. If you were inspected upon arrival or need a No Claims/No Comp receipt, check out with Ground Support. If this does not apply, proceed to NEXT STEP.
3. Call Finance at 509-423-6011 or 509-433-1115 or 509-531-7418 to finalize paperwork.
4. Call DMOB at 509-432-6143 or 206-473-1425 to complete the process to be released.

***** CHICKADEE CREEK *****

EQUIPMENT

E-4	0600	FEL1	WILL LOGGING
-----	------	------	--------------

***** WALKER CREEK *****

EQUIPMENT

E-175	0600	WTS3	STOTTS CONSTRUCTION
E-233	0615	SKD2	NORTH COLUMBIA
E-234	0615	SKD2	NORTH COLUMBIA
E-19	0630	ENG5	LL MEADOW WILDFIRE
E-120	0645	ENG6	ARCHER MOUNTAIN
E-236	0645	ENG3	WA-SPFN 3
E-237	0700	FEL1	WILL LOGGING
E-334	0700	SKG2	PRICE EXCAVATION

OVERHEAD

O-171	0600	DIVS	GLEASON, DANIEL
O-220	0600	EMTF	SATCHER, RYAN
O-325	0615	HMGB	LILLEY, CHRIS
O-332	0615	ASGS	RESER, GREG
O-159	0630	EMTF	JOHNSON, HANS
O-272	0630	EMPF	COOPER, MICHAEL



Walker Creek/Chickadee Fires COVID-19 Information

Who should be PCR tested for COVID-19?

- Based on the number of positive COVID-19 cases on the Walker Creek/Chickadee Fires, Okanogan County Public Health has advised ALL firefighters assigned to the fires to be tested.

How can I get tested?

- If you missed the opportunity to get a COVID-19 PCR test at your assigned branch location, OR if you develop COVID-like symptoms/are made aware of close contact with someone who tests positive for COVID-19, **contact the NW Team 12 Health Liaison at 509-675-3504** to make testing arrangements.

What happens if I test positive?

- If you test positive for COVID-19 but have mild or no symptoms, NW Team 12 has a plan in place to keep firefighters working while safely isolated from other crews. A positive test does not automatically mean you will be isolated and unable to work. **It is imperative that you notify your supervisor of positive test results** if you are tested somewhere other than our designated locations on the fire, so that we can manage your working isolation away from other resources.
- If you test positive and your symptoms are more severe, NW Team 12 will work with Okanogan County Public Health to find the best solution for your isolation and recovery in coordination with your home unit.

What happens if I choose not to be tested?

- Firefighters who are not tested and have NO COVID-19 symptoms will be allowed to keep working, but will be isolated from other crews to prevent further spread from unidentified cases.
- Firefighters who choose not to be tested but ARE displaying COVID-19 like symptoms will be required to isolate according to Okanogan County Public Health recommendations and will not be allowed to continue working.

When and how will I get my test results?

- With the current backlog of tests at area labs, your test results may not be available for 24-48 hours, or in some cases longer. There will be no change to your work status while we await results. You will be able to access your results online as soon as they are available. Details will be provided to you when you are tested.

Is rapid testing available?

- Rapid testing is available at all times, however these tests are most accurate for symptomatic patients and might not catch someone who is asymptomatic but still carrying COVID-19, which is why we recommend PCR testing for firefighters who might have been exposed but are not showing symptoms.

For more information about testing or getting a COVID-19 Vaccine, visit <https://okanogancounty covid19.org/>

WALKER CREEK/CHICKADEE FIRE COVID-19 MITIGATIONS

Supervisors are required to go over this list each morning with assigned resources- report any symptoms to medical unit. *take temperature with no touch thermometer, if available*

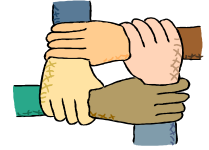
In the last 24 hours have you experienced:

- Cough more than expected?
- Shortness of breath or difficulty breathing?
- Fever? Chills?
- Sore throat?
- New loss of taste or smell?
- Fatigue, outside your normal for firefighting?
- Headache, outside your normal for firefighting?
- Congestion or runny nose?
- Nausea or vomiting
- Diarrhea

- **All personnel are required to wear a mask at all times, whether indoors or outdoors, unless working alone or actively engaged in firefighting on the fireline.**
- **Use radio or Zoom link provided to join briefings remotely.**
- **Observe 6ft Distancing at all times.**
- **Send crew representatives to pick up meals - masks must be worn in food lines.**
- **Wash hands frequently and disinfect high-traffic areas on a regular basis.**
- **Limit close contact between firefighters and the public to prevent exposure and spread. WEAR A MASK AT ALL TIMES WHILE IN PUBLIC PLACES.**



Human Resource Message



Walker Creek and Chickadee Creek Fires, September 4, 2021

Fire's core values reflect more than just firefighting. They are about who you are, how you approach your job, and how you treat people.

- Diversity is an asset as people's differences can bring new perspectives and approaches, so take the time to learn your colleagues' history and personal values to gain ideas and an understanding that you may not have considered.
- In fire, we focus on protecting life, property, and resources, but we need to protect each other. Sometimes the right choice is not the easy choice, but you will never regret doing the right thing by treating someone well.
- Take a moment to think about what Duty, Respect, and Integrity mean to you, and how you can apply them to your job, your team, the fire community, on this fire, to your family. It takes Courage to stand apart from the crowd and act upon the other core values.



Quote of the day:

"Keep your thoughts positive because your thoughts become your words. Keep your words positive because your words become your behavior. Keep your behavior positive because your behavior becomes your habits. Keep your habits positive because your habits become your values. Keep your values positive because your values become your destiny." – Mahatma Gandhi



Work safely, keep positive thoughts, and have a great day! Your work and service are appreciated.

**Susie Manezes, NW Team 12, HRSP
Contact: 602-571-9327**

A Message from Public Information

TALKING TO THE PUBLIC ABOUT DONATIONS: *Please help us inform the public that firefighters are **UNABLE** to receive food donations.*

Community members are so grateful for the work you are doing that they **want to bring meals to the fireline, which we unfortunately cannot receive.**

If you are talking to the public and the subject of meals or supplies comes up, please **emphasize that as fire line resources, you carry and receive everything you need.** Thank you for helping us spread the word!

If community members have questions that you do not feel equipped to answer professionally, please give them our fire information line: (509) 557-7257.

PHOTOS: Your fireline photos help us build understanding with the public. Community members want to see what you see because you go where others can't safely go. We are looking for any pictures of the fire line and **fire resources working on the fire line in their PPE.** You can send photos to:

Email: 2021.walkercreek@firenet.gov

Text: (509) 557-7257

As always, make sure you're wearing all your PPE and conveying a professional, caring, and respectful attitude toward the homes and land in this community. Thanks for helping us out!

Lastly, while it's our job to talk to the public, we want you to know the public is talking to you too. Today we received this email from a happy cabin and landowner on the Walker Creek Fire:

"Today, I went up to check on the cabin after I heard the evacuation order had been lifted on Friday. I wish to give you all my heartfelt thanks for digging a hand line around the cabin, woodshed, and storage shed, as well as laying hose line with a pump in the creek next to the cabin. I had no idea this had been done. Thanks again for all the wonderful work you folks are doing!"



Logistics Message

Omak Base Camp

Kitchen Hours

0600 to 0900 Breakfast

1800 to 2100 Dinner

Supply/Cache Hours

0530-2130

Shower Hours

0430-1300 Open

1400-2300 Open

Ground Support

0500-2200



Walker Creek and Chickadee Creek Fire

Finance Message

2021.walkercreek.finance@firenet.gov

For all agency, casual hire & Co-Ops Call Carol at (509) 433-1115

For all Contract Resources (VIPR) Call Todd (509) 939-9262

DNR Hire at Fire Call Mark (509) 531-7418

Make sure that your CTR and ST have the correct fire that you are working on.
Please make sure to call the appropriate person for assistance.

**** Finance is all virtual. When you call us to demob we will tell you what we need from you. Those that are in a location where there is no cell service, as soon as you get into the cell range please call us with all your time and we will tell you where to send it.**

We will be processing OF-288s and 286s all day. Finance will not need you here to process these, so you can head home after you have completed the demob process. We will send time to your email that you provide us by the end of the day.

We got the email fixed 😊 Please send your time to the Walker Creek email box only. Please stop sending to other mailboxes. It's taking us more time to sort through the duplicates that we are receiving.

If we need something from you, we will call and request what we need.

Thank you for your patience and understanding

**Note to Contractors with
transports**

For all heavy equipment with a transport, two operators must be shown on the shift ticket for the transport to receive full pay.

Incident Maps

How to Download Maps in Avenza

If you're cell signal is poor you may need to connect to a wifi to download maps. However sometimes being connected to a wifi can slow map downloads. You'll just have to find out what works best.

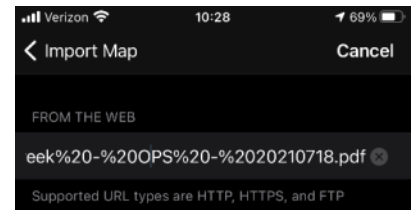
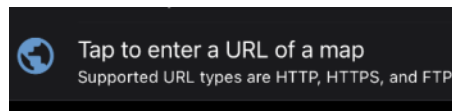
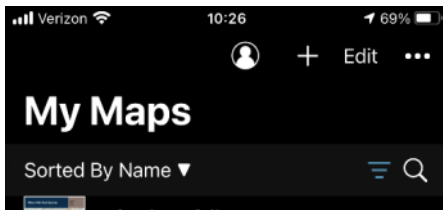
Method 1: From a browser - If you have a good cell or wifi signal

1. Tap on the desired map link and wait for the preview. *If it fails to load, use method 2 instead*
2. Tap the 'send to' icon (square with up arrow)
3. Choose the Avenza app



Method 2: From Avenza direct – if you don't have a good cell or wifi signal

1. Tap and hold on the desired map link, then choose 'copy' to copy the direct URL to the map
2. Launch the Avenza app
3. When not in any map... Tap the + (plus) icon at the top of the screen
4. Choose the load from URL option (last choice)
5. Paste the direct URL to the map
6. Tap 'Done' ; the map will begin downloading



How to Send Map Updates to the Situation Unit

1. From within the map in Avenza, click the pin with three lines near the lower-right corner.
2. *iPhone:* In the lower right, click the square with up arrow. From the pop-up menu, choose Export to Others.
Android: In the lower right, click the circle with three lines. Click the pop-up circle with up arrow.
3. Set these options:
 - a. Filename – leave alone
 - b. Export Format – choose SHP, GPX or KML
 - c. Data – all features
 - d. Image size – no image
4. Click the Export button in the upper-right corner.
5. When the export is ready, choose your Mail application.
6. Email the update to 2021.walkercreek.situation@firenet.gov for the Walker Creek Fire map updates or 2021.chickadeecreek.situation@firenet.gov for the Chickadee Fire map updates.
7. If you have questions, call or text the Situation Unit at 360-584-3373.
8. Your email needs to include an explanation of the data and a contact phone number.

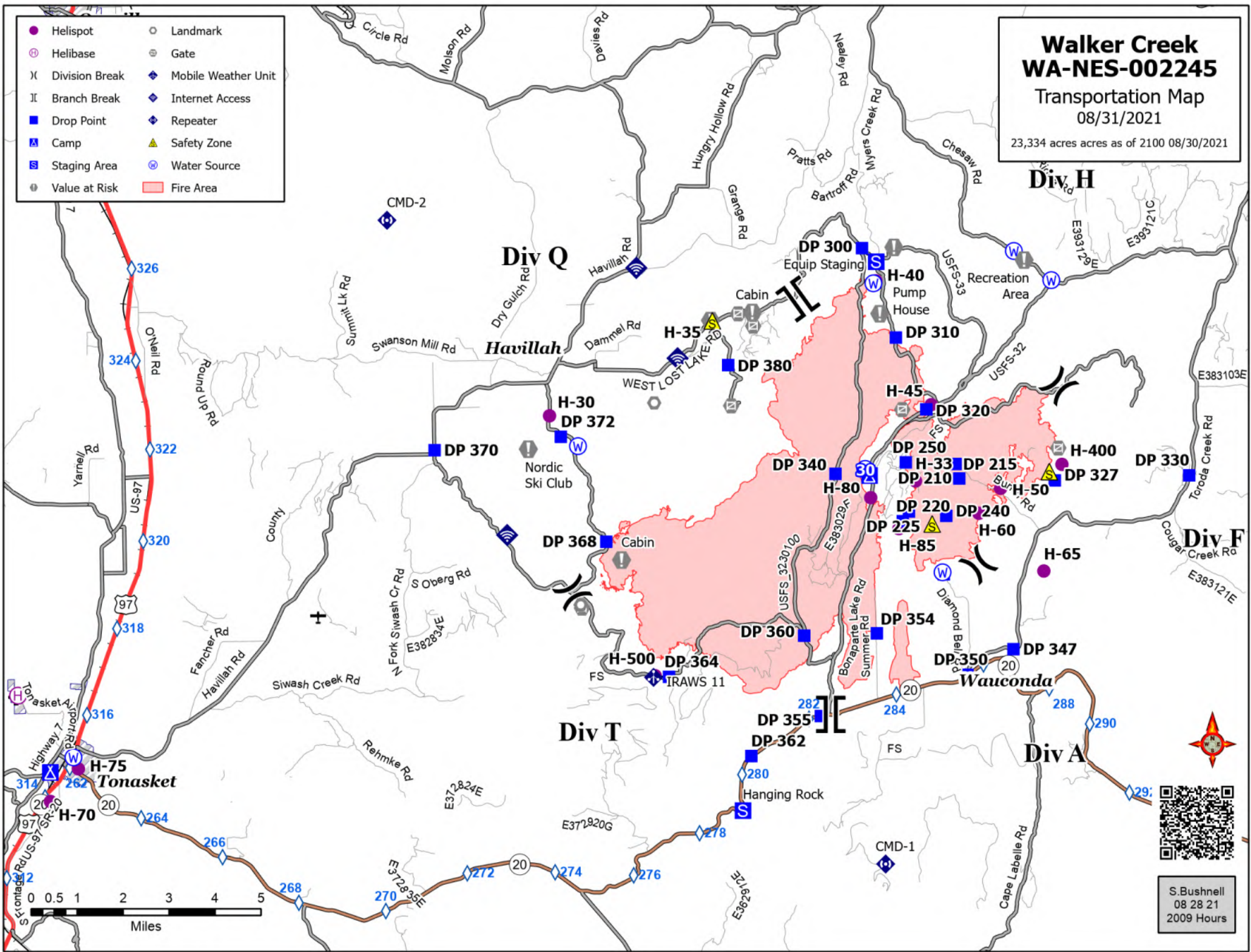
If all else fails draw your map update on your paper map, take a picture and it attach that to an email to the above addresses.

Walker Creek WA-NES-002245

Transportation Map
08/31/2021

23,334 acres as of 2100 08/30/2021

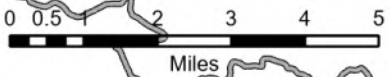
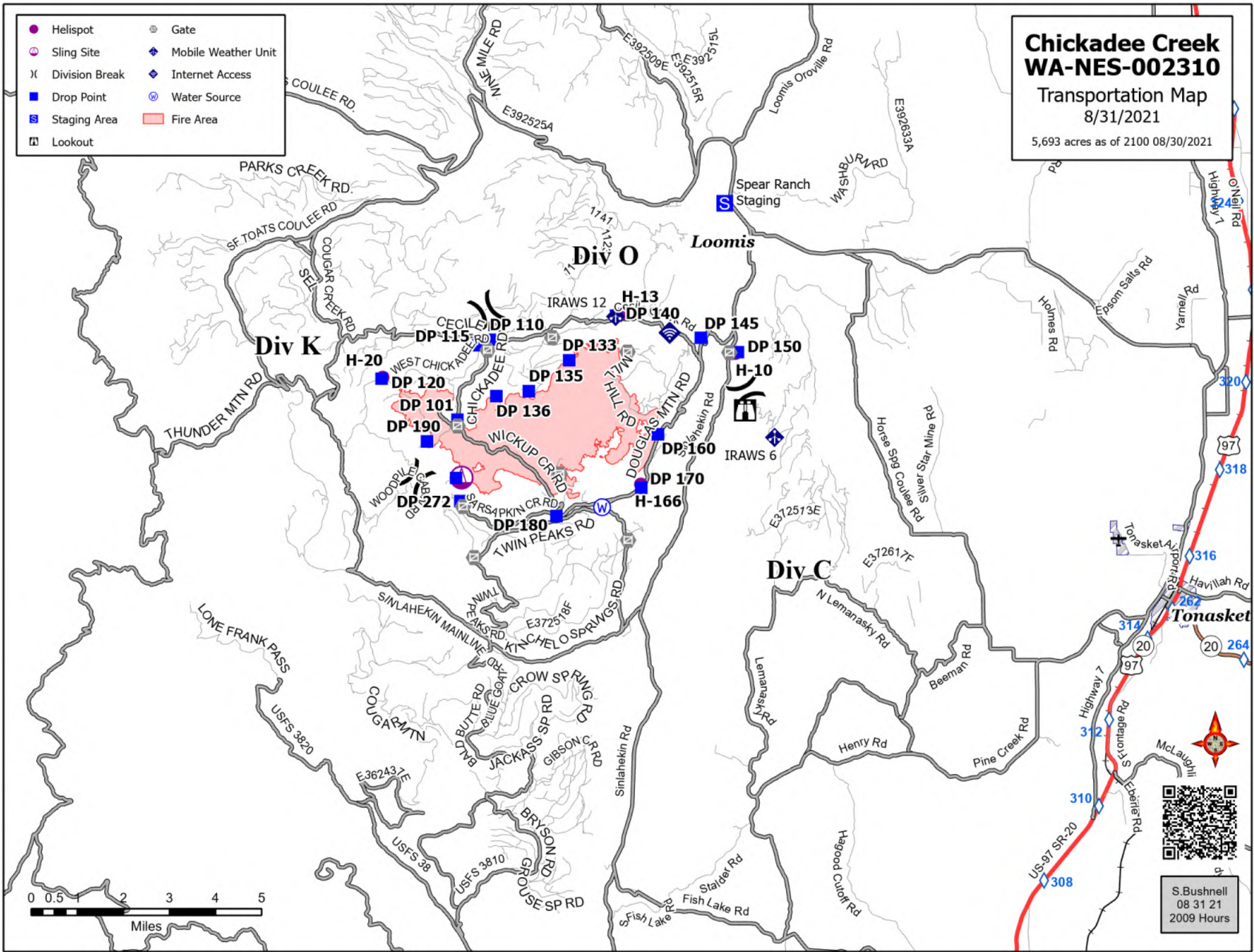
- | | |
|------------------|-----------------------|
| ● Helispot | ○ Landmark |
| ⊕ Helibase | ⊖ Gate |
| X Division Break | ◆ Mobile Weather Unit |
| Branch Break | ◆ Internet Access |
| ■ Drop Point | ◆ Repeater |
| ▲ Camp | ▲ Safety Zone |
| ■ Staging Area | ⊕ Water Source |
| ● Value at Risk | ■ Fire Area |



S. Bushnell
08 28 21
2009 Hours

- Helispot
- ⊗ Sling Site
- X Division Break
- Drop Point
- ⊞ Staging Area
- ⚠ Lookout
- ⊙ Gate
- ⚡ Mobile Weather Unit
- ⬠ Internet Access
- ⊕ Water Source
- 🔥 Fire Area

**Chickadee Creek
WA-NES-002310**
 Transportation Map
 8/31/2021
 5,693 acres as of 2100 08/30/2021



S. Bushnell
 08 31 21
 2009 Hours



EMERGENCY PLAN INCIDENT WITHIN AN INCIDENT

ON SCENE INCIDENT COMMANDER

In the event of an accident or medical incident of any size, your primary responsibility is to ENSURE that the victim(s) receive prompt and effective Triage, Treatment, Extrication and Transport.

- **ENSURE THE MEDICAL INCIDENT REPORT IN THE INCIDENT ACTION PLAN IS BEING USED AND FOLLOWED- *IF DETERMINED TO BE A GREEN, DO NOT DECLARE EMERGENCY TRAFFIC AND ONLY COMPLETE LINE 1-4 ON MIR*.**
- Conduct size-up of the incident nature of accident, number type of resources involved, latitude and longitude location (DD°MMM.MM format): notify incident communications center and supervisor, request assistance as needed.
- Order and coordinate medical and support response to the accident.
- Evaluate special needs (law enforcement, haz mat, etc.).
- Clear the command frequency if medical emergency, coordinate with incident communications and air attack for air medical transportation needs.
- Preserve and photograph the scene for accident investigation.
- Remain aware of surroundings and the status of the main incident (delegate personnel to monitor the main fire) to ensure safety of medical treatment personnel.
- Until relieved, supervise and manage all personnel involved at the incident scene.

MEDICAL PLAN (ICS 206 WF)

20 Incident/Project Name			1. Operational Period				
Walker Creek Fire			September 4th, 2021 0600-2200				
2. Ambulance Services							
Name	Complete Address	Phone	Advanced Life Support (ALS) Yes No				
Lifeline Ambulance	912 Koala Ave Omak, WA 98841	911 - Dispatch 509-663-8091	X				
3. Air Ambulance Services							
Name	Phone	Type of Aircraft & Capability					
Life Flight Network	800-232-0911	Bell 407 - Brewster					
Airlift Northwest	800-426-2430 or 911	Rotor in Wenatchee					
4. Hospitals							
Name Complete Address	Coordinate Standard Degrees Decimal Minutes DD° MM.MMM' N - Lat DD° MM.MMM' W - Long	Travel Time From Bonaparte	Air	Gnd	Phone	Helipad Yes No	Level of Care Facility
North Valley Hospital 203 S Western Ave Tonasket, WA 98855	Lat: 48°42.4549' N	13 min	38 min	509-486-2151		X	Level 4 Trauma
	Long: 119°26.3267' W						
Mid-Valley Hospital 912 Koala Ave Omak, WA 98841	Lat: 48°23.8336' N	24 Min	59 min	509-826-1760	X		Level 4 Trauma
	Long: 119°32.8758' W						
Confluence Health Hospital (Central Washington Hospital) 1201 S Miller St. Wenatchee, WA 98801	Lat: 47°24.4340' N	1 Hr 12 min	2 Hr 48 min	509-662-1511	X		Level 2 Trauma
	Long: 120°19.3664' W						
Harborview Medical 325 9 th Ave Seattle, WA 98104	Lat: 47°36.1897' N	2 Hr 22 min	5 Hr	541-222-6929	X		Level 1 Trauma Burn Center
	Long: 122°19.4759' W						
5. Division Branch Group	Capability	Personnel					
Div A/F		Byrd EMPF AMR Ambulance (Ambo 3) Gates					
Div H		Sewell EMPF					
Div Q		Bridges EMPF					
Div T		Marin EMPF					
6. Prepared By (Medical Unit Leader)		7. Date/Time	8. Reviewed By (Safety Officer)		9. Date/Time		
Lee Venning (T), Eamonn Ryan <i>Lee Venning</i>		09/3/2021 1800	Troy Corn <i>Troy Corn</i>		09/3/2021 1800		

MEDICAL PLAN (ICS 206 WF)

20 Incident/Project Name		1. Operational Period					
Chickadee Creek Fire		September 4th, 2021 0600-2200					
2. Ambulance Services							
Name	Complete Address	Phone	Advanced Life Support (ALS) Yes No				
Lifeline Ambulance	912 Koala Ave Omak, WA 98841	911 - Dispatch 509-663-8091	X				
3. Air Ambulance Services							
Name	Phone	Type of Aircraft & Capability					
Life Flight Network	800-232-0911	Bell 407 - Brewster					
Airlift Northwest	800-426-2430 or 911	Rotor in Wenatchee					
4. Hospitals							
Name Complete Address	Coordinate Standard Degrees Decimal Minutes DD° MM.MMM' N - Lat DD° MM.MMM' W - Long	Travel Time From Loomis		Phone	Helipad Yes No	Level of Care Facility	
North Valley Hospital 203 S Western Ave Tonasket, WA 98855	Lat: 48°42.4549' N	8 min	22 min	509-486-2151		X	Level 4 Trauma
	Long: 119°26.3267' W						
Mid-Valley Hospital 912 Koala Ave Omak, WA 98841	Lat: 48°23.8336' N	20 Min	46 min	509-826-1760	X		Level 4 Trauma
	Long: 119°32.8758' W						
Confluence Health Hospital (Central Washington Hospital) 1201 S Miller St. Wenatchee, WA 98801	Lat: 47°24.4340' N	68 min	2 Hr 35 min	509-662-1511	X		Level 2 Trauma
	Long: 120°19.3664' W						
Harborview Medical 325 9 th Ave Seattle, WA 98104	Lat: 47°36.1897' N	1Hr 38 min	4 Hr 50 min	541-222-6929	X		Level 1 Trauma Burn Center
	Long: 122°19.4759' W						
5. Division Branch Group	Capability			Personnel			
Div C	Smith EMPF (UTV)			Pend Oreille Ambulance (Ambo 2) Sylvester			
Div K/O	Kyle Meade EMPF						
6. Prepared By (Medical Unit Leader)			7. Date/Time		8. Reviewed By (Safety Officer)		9. Date/Time
Lee Venning (T), Eamonn Ryan <i>Lee Venning</i>			09/3/2021 1800		Troy Corn <i>Troy Corn</i>		09/3/2021 1800

MEDICAL PLAN (ICS 206 WF)

Controlled Unclassified Information//Basic

Medical Incident Report

FOR A NON-EMERGENCY INCIDENT, WORK THROUGH CHAIN OF COMMAND TO REPORT AND TRANSPORT INJURED PERSONNEL AS NECESSARY.

FOR A MEDICAL EMERGENCY: IDENTIFY ON SCENE INCIDENT COMMANDER BY NAME AND POSITION AND ANNOUNCE "MEDICAL EMERGENCY" TO INITIATE RESPONSE FROM IMT COMMUNICATIONS/DISPATCH.

Use the following items to communicate situation to communications/dispatch.

1. CONTACT COMMUNICATIONS / DISPATCH (**Verify correct frequency prior to starting report**)

Ex: "Communications, Div. Alpha. Stand-by for Emergency Traffic."

2. INCIDENT STATUS: *Provide incident summary (including number of patients) and command structure.*

Ex: "Communications, I have a Red priority patient, unconscious, struck by a falling tree. Requesting air ambulance to Forest Road 1 at (Lat./Long.) This will be the Trout Meadow Medical, IC is TFLD Jones. EMT Smith is providing medical care."

Severity of Emergency / Transport Priority	<input type="checkbox"/> RED / PRIORITY 1 Life or limb threatening injury or illness. Evacuation need is IMMEDIATE <i>Ex: Unconscious, difficulty breathing, bleeding severely, 2° – 3° burns more than 4 palm sizes, heat stroke, disoriented.</i> <input type="checkbox"/> YELLOW / PRIORITY 2 Serious Injury or illness. Evacuation may be DELAYED if necessary. <i>Ex: Significant trauma, unable to walk, 2° – 3° burns not more than 1-3 palm sizes.</i> <input type="checkbox"/> GREEN / PRIORITY 3 Minor Injury or illness. Non-Emergency transport <i>Ex: Sprains, strains, minor heat-related illness.</i>	
Nature of Injury or Illness & Mechanism of Injury		<i>Brief Summary of Injury or Illness (Ex: Unconscious, Struck by Falling Tree)</i>
Transport Request		<i>Air Ambulance / Short Haul/Hoist Ground Ambulance / Other</i>
Patient Location		<i>Descriptive Location & Lat. / Long. (WGS84)</i>
Incident Name		<i>Geographic Name + "Medical" (Ex: Trout Meadow Medical)</i>
On-Scene Incident Commander		<i>Name of on-scene IC of Incident within an Incident (Ex: TFLD Jones)</i>
Patient Care		<i>Name of Care Provider (Ex: EMT Smith)</i>

3. INITIAL PATIENT ASSESSMENT: *Complete this section for each patient as applicable (start with the most severe patient)*

Patient Assessment: See IRPG page 106

Treatment:

4. TRANSPORT PLAN:

Evacuation Location (if different): *(Descriptive Location (drop point, intersection, etc.) or Lat. / Long.)* Patient's ETA to Evacuation Location:

Helispot / Extraction Site Size and Hazards:

5. ADDITIONAL RESOURCES / EQUIPMENT NEEDS:

Example: Paramedic/EMT, Crews, Immobilization Devices, AED, Oxygen, Trauma Bag, IV/Fluid(s), Splints, Rope rescue, Wheeled litter, HAZMAT, Extrication

6. COMMUNICATIONS: Identify State Air/Ground EMS Frequencies and Hospital Contacts as applicable

Function	Channel Name/Number	Receive (RX)	Tone/NAC *	Transmit (TX)	Tone/NAC *
COMMAND					
AIR-TO-GRND					
TACTICAL					

7. CONTINGENCY: **Considerations:** *If primary options fail, what actions can be implemented in conjunction with primary evacuation method? Be thinking ahead.*

8. ADDITIONAL INFORMATION: *Updates/Changes, etc.*

REMEMBER: Confirm ETA's of resources ordered. Act according to your level of training. Be Alert. Keep Calm. Think Clearly. Act Decisively.

Controlled Unclassified Information//Basic