



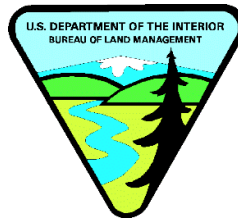
INCIDENT ACTION PLAN

Walker Creek

Chickadee Creek

September 7, 2021

Operational Period – 0600-1800



BRIEFING Phone
(audio only)
[+1 929-336-2435,452803978#](tel:+19293362435452803978)
Phone Conference
ID: 452 803 978#

QR Code for:
Virtual Check-in
Time
Maps / IAP



Walker Creek Fire
WA-NES-002245
PNN7RL (1522)
221-KPI

Chickadee Creek Fire
WA-NES-002310
PNN7WA (1522)
221-JFZ

ORGANIZATION ASSIGNMENT LIST (ICS 203)

1. Incident Name:		2. Operational Period: DAY	
WALKER CREEK & CHICKADEE CREEK		Date/Time From: 09/07/2021 0600 TUE	Date/Time To: 09/07/2021 1800 TUE
3. Incident Commander(s) and Command Staff:		SECURITY UNIT	
IC/UC	JEFF DIMKE	7. Operations Section:	
DEPUTY	BOBBY SHINDELAR	PLANNING OPS	AARON ROWE MIKE DAVIS (T)
SAFETY OFFICER	TROY CORN JACK CATES (VIRTUAL)	OPS SECTION CHIEF	JEROMY WILSON (T)
INFORMATION OFFICER	MARY BEAN ROLAND EMETAZ	BRANCH DIRECTOR	JERRAN FLINDERS
LIAISON OFFICER	SCOTT CRAWFORD		
HEALTH LIAISON		DIVISION/GROUP	A/F CODY ACORD JASON EMHOFF
HUMAN RESOURCE SPECIALIST	SUSIE MANEZES	DIVISION/GROUP	H MATT KENNEDY
4. Agency/Organization Representative(s):		DIVISION/GROUP	Q MATT TRAYNHAM JAMES DICKINSON (T)
Agency/Organization	Name	DIVISION/GROUP	T MICHAEL JACKSON SETH JONES (T)
DNR	KEN MCNAMEE (ADMIN) BRETT WALKER (AREP)	DIVISION/GROUP	REPAIR GROUP
USFS	RODNEY SMOLDEN (ADMIN) MATT MARSH (AREP)	DIVISION/GROUP	C BOB HINDS
BLM	CURTIS BRYANT (ADMIN)	DIVISION/GROUP	K/O EDWARD LEBLANC SAM STEINSHOUER (T)
OKANOGAN COUNTY OES	MAURICE GOODALL		
5. Planning Section:		7b. Air Operations Branch:	
CHIEF	MARGE HUTCHINSON	AIR ATTACK SUPERVISOR	
DEPUTY	HOWARD JOHNSON (VIRTUAL)	AIR SUPPORT SUPERVISOR	
RESOURCES UNIT	JILL JOHNSON		
SITUATION UNIT	DAVE WISCHER (VIRTUAL)	8. Finance/Administration Section:	
DOCUMENTATION UNIT	DEIDRE SMITH (VIRTUAL))	CHIEF	CHERI FULLER CHRISTINA GOEBEL (T)
DEMOBILIZATION UNIT	MIKE HESTON (VIRTUAL) ED MORGAN	TIME UNIT	CAROL LONG
FIRE BEHAVIOR ANALYST	DON STRAND	PROCUREMENT UNIT	MARK BOHNET
GIS SPECIALIST	SHAWN BUSHNELL	COMPENSATION UNIT	CHERI FULLER
TECHNOLOGY SUPPORT SPECIALIST	TODD MALLERY; JEFF HIXSON (T) SURENDRAN KADAMBANATTU (T)	COST UNIT	KAY HIGH (VIRTUAL)
INCIDENT METEOROLOGIST	TOM BIRD	ICPI	ROB HECHINGER
6. Logistics Section:			
CHIEF	DAN SOPTICH		
DEPUTY	KEVIN HAUGHTON		
FACILITIES UNIT	SCOTT BEAULAUER		
GROUND SUPPORT UNIT	DAVE HARSH		
COMMUNICATIONS UNIT	MISSY PARKER		
MEDICAL UNIT	EAMONN RYAN LEE VENNING (T)		
SUPPLY UNIT	JOHN KAUPA		
FOOD UNIT	RUSS HOVEY		
9. Prepared By:	Name: JILL JOHNSON	Position/Title: RESL	Signature:
ICS 203	IAP Page	Date/Time: 09/06/2021 2000	<i>Jill Johnson</i>



Fire Weather Forecast



FORECAST NO: 31
PREDICTION FOR: Tuesday
SHIFT DATE: September 7, 2021
FORECAST ISSUED: 9/6/2021 at 2000

INCIDENT: Walker-Chickadee Fires
UNIT: DNR-USFS-BLM
Tom Bird - (915) 588-9781 tom.bird@noaa.gov
SIGNED: Incident Meteorologist (IMET)

Weather Discussion:

*****Warmer and Drier – Generally Light Winds*****

The axis of a high pressure ridge moves over the fires today. This means warmer and drier conditions, with above normal temperatures and low relative humidity. Despite an increase in high clouds, this afternoons temperatures will reach the upper 70s to near 80, with valley temperatures near 90. Minimum relative humidity will fall to the upper teens and lower 20s. Winds will be generally light and variable, driven by local terrain influences. Wednesday and Thursday a pair of low pressure systems pass across the fires. This will elevate fire weather concerns with increased winds both days. Both of these features look to move across the fires without bringing any precipitation. Temperatures will cool Thursday, with moderate gains in relative humidity Thursday into the weekend.

WEATHER FORECAST for CHICKADEE FIRE

TODAY:

SKY/WEATHER: Increasing high clouds, variably cloudy. Warmer and quite dry. Light and variable winds.
High Temperature...74-79° above 4000 ft...78-83° below 4000 ft. (24hr chg + 5°)
Min RH.....21-25% above 4000 ft...18-22% below 4000 ft. (24hr chg - 7%)
20-FOOT WINDS: Terrain influenced upslope 2-6 mph, exposed areas variable 5-10 mph.
CWR (>=0.10")....0% **LAL....**1 **Haines Index...3 (Very Low)** **Mixing Height...4600 ft AGL**

TONIGHT:

SKY/WEATHER: Mostly cloudy skies. A few light showers possible. Mild Temps. Only fair RH recovery.
Low Temperature...Slopes: 60-65° Valleys: 55-60°
Max RH.....Slopes: 40-44% Valleys: 45-50%
20-FOOT WINDS: Generally down drainage 3-5 mph. **Ridges & N/S valleys:** Southwest 5-15 mph.
CHANCE OF RAIN: 10% **CWR (>=0.10")....**0% **LAL....**1

WEATHER FORECAST CHANCE OF RAIN: 10% CWR (>=0.10")....0% LAL....1
for WALKER FIRE

TODAY:

SKY/WEATHER: Increasing high clouds, variably cloudy. Warmer and quite dry. Light and variable winds.
High Temperature...73-78° above 4000 ft...77-81° below 4000 ft. (24hr chg + 5°)
Min RH.....23-27% above 4000 ft...20-24% below 4000 ft. (24hr chg - 7%)
20-FOOT WINDS: Terrain influenced upslope 2-6 mph, exposed areas variable 5-10 mph.
CWR (>=0.10")....0% **LAL....**1 **Haines Index...3 (Very Low)** **Mixing Height...5500 ft AGL**

TONIGHT:

SKY/WEATHER: Mostly cloudy skies. A few light showers possible. Mild Temps. Only fair RH recovery.
Low Temperature...Slopes: 55-60° Valleys: 50-60°
Max RH.....Slopes: 40-45% Valleys: 45-50%
20-FOOT WINDS: Generally down drainage 3-5 mph. **Ridges & N/S valleys:** Southwest 5-15 mph.
CHANCE OF RAIN: 10% **CWR (>=0.10")....**0% **LAL....**1

Extended Outlook

WEDNESDAY: Morning clouds, then mostly sunny. Slightly cooler and not as dry. Breezy. Highs: 73-78. Min RH: 28-33%. Winds: Southwest 10-15 mph with gusts to 25 mph over exposed areas.
THURSDAY: Variable cloudiness. Trending cooler and slightly more moist. Breezy. Highs: 70-75. Min RH: 27-32%. Winds: Southwest 10-15 mph with gusts 20 to 30 mph over exposed areas.
FRIDAY: Mostly Sunny. Cooler. Highs: 65-70. Min RH: 27-32%. Winds: Southwest 6-12 mph.

FIRE BEHAVIOR FORECAST

FORECAST NUMBER: 31	TYPE OF FIRE: Wildland
FIRE NAME: Walker Creek & Chickadee Creek	OPERATIONAL PERIOD: Sept 7, 2021 0600-0600
DATE ISSUED: September 6, 2021	TIME ISSUED: 2000
UNIT: WA DNR, BLM, USFS	Don Strand FBAN

INPUTS

WEATHER SUMMARY: See attached fire weather forecast

OUTPUTS

FIRE BEHAVIOR

FUELS: The fires are burning mostly in mixed conifer timber litter consisting of Douglas-fir (many with dwarf mistletoe clumps), western larch, Engelmann spruce reproduction and overstory., and lodgepole pine below 6,000'. Sub-alpine fir, white bark pine, and lodgepole pine occur above 6,000'. All timber types have ladder fuels with black moss/lichens that make for an easy transition to crown fire. Dead fine fuels, grass (where not heavily grazed), and slash can increase surface fire spread. Most live fuels, except for red alder, are available to carry fire and fuel moistures will continue to drop with seasonal drying. Live fuels are still drought stressed.

GENERAL: Fire behavior potential continues to slowly increase and is slightly above average for this time of year. Generally, expect smoldering and creeping fire behavior on both fires. Areas of heavy needle cast will also see smoldering and creeping fire behavior. Potential for interior isolated torching remains due to abundant ladder fuels. Some limited areas will have backing and flanking fire behavior with torching. Expect a notable increase in fire behavior potential as the humidity drops to 30% or lower in the afternoon. Unshaded surface fuels will be more available to carry fire.

SPECIFIC:

- **Chickadee:** Continued smoldering and creeping fire behavior in scattered areas of the fire.
- In limited areas of unburned islands and areas of dirty burns, expect periodic backing and flanking fire spread.
- Still potential for torching and short-range spotting with the abundant ladder fuels. Areas exposed to winds have potential to see an increase in intensity.

Fuel Moistures- Aeneas LO WIMS data from yesterday were- 10-hour 12%, 100-hour 12%, 1000-hour 13%. ERC 45.

Chickadee IRAWS on Cecil Creek Road, yesterday's minimum 10-hr fuel moisture was 7%.

Probability of Ignition will approach 70% unshaded and 50% shaded.

- **Walker:** Scattered smoldering and creeping fire behavior today with continued potential for isolated torching where ladder fuels are above and surface fire.
- In DIV Q, where much of the fire edge is interior to control lines, backing and flanking in heavy surface fuels will continue along with periodic torching. The fire edge may have repositioned overnight below available fuels so potential also exists for limited short upslope runs in the afternoon.

Fuel Moistures- Lost Lake RAWs WIMS data from yesterday were- 10-hour 12%, 100-hour 12%, 1000-hour 13%. ERC 46.

Walker Creek IRAWS near DP 364, yesterday's minimum 10-hr fuel moisture was 6%.

Probability of Ignition will approach 70% unshaded and 50% shaded.

AIR OPERATIONS: Expect some turbulence in areas of complex terrain

k k m h y c k n t n d y v p g s x a t w z b i m n
l g n t z r p g r q c w e u s o t x f q b w p r m
z n c q a e r n q u j c i e w m a u f g k o u i s
s m o l d e r i n g b h s r m u r s o m u b w l k
t h k y w p d k f l i e o a t j t e m h y j e l n
u o a o v i v c b r g b r l d u t j b t c u t c h
u l r u r n j a s n p u j f m u u o r w f t c f r
r d r c t g a b i y y j y p k k f i q r i v a z p
a o j m h a b k j y y p h s p x d f e d s p f w u
t v k a d i n s o d y o s e e r t d r a z a h e p
c e b t v a n u g m l b n r w d d z v u x b w o o
d r j t l l x g v e j w o p z a s p o t t i n g m
i s q f b h l h s b e g a i l o f d e h c r o c s
v g g m r k r t z q y j f r a t h v y y u s b y g
o i u e f u e l m o i s t u r e f h x f k h j l u

SAFETY

Find the fire behavior terms.

backing berms creeping
dirtyburn duff flanking
flareup fuelmoisture
hazardtrees
holdovers ladderfuels mopup
reburn scorchedfoliage
smoldering
spotting stumpholes torching
watchouts



SAFETY MESSAGE

7 September 2021

INCIDENT: Walker Creek/Chickadee

OPERATIONAL PERIOD: 0600-1800

TRANSITION

NE IMT 3 will shadow today and transition Wednesday morning. Transition is a time that can be marred by extreme success or failure. Work to build positive relationships and ensure open lines of communications exist. Take a few extra minutes to get to know new personnel and provide a good briefing of actions.

TRAVEL HOME

It has been a long season with little R&R. Take your time getting home and take frequent breaks if needed. Check in with your section/staff lead when you arrive home. Remember, fire season is a marathon, not a sprint.

Be Careful of Kamikaze Pilots That Have Flown Multiple Missions.

COVID MITIGATIONS

Please review your COVID/Viral Transmission prevention guidelines. Maintain your distancing to the greatest extent, cough or sneeze away from other people, mask up when indoors and respect the personal space of others. If you begin feeling ill, notify your supervisor and seek medical attention for screening.

Ensure LCES in in place before engaging and continue to evaluate during the entire shift.

SAFETY OFFICER: Troy Corn, Jack Cates

Deliberate Risk Assessment-Hazard Summary

7 September 2021

Hazard	Mitigation	Post Risk
Viral Transmission Mitigations, Communicable Disease	Maintain awareness of health, perform self checks, maintain social distancing, wear face coverings when indoors or when social distancing cannot be maintained. Report and isolate if feeling symptomatic. Coordinate with Okanogan County Public Health for testing, reporting and isolation as needed. Conduct testing of personnel with exposure to known positive cases.	Low
Extraction Time	Identify medivac sites and helispots. Initiate ground transport to accident site. Identify EMT/EMTP from resources assigned to division. Provide line qualified paramedics to each division as available. Review IWI protocol to ensure familiarity. Utilize civilian medivac as treatment/timing dictates. Evaluate on-going need for repositioning medical personnel.	High
Heavy Equipment	Post lookouts around equipment work areas. Establish communications with equipment boss and operator. Do not work down slope from equipment. Familiarize crews with specialty equipment and processes.	High
Hazard Trees	Use avoidance to limit exposure time. Snag ahead to avoid exposure. Use qualified fallers, blasting, or alternate methods if needed. Conduct on-going risk analysis of all work areas. Follow Hazard Tree Safety Guidelines (IRPG page 22).	High
Aircraft	Utilize Air Attack. Ensure all resources are a safe distance from all bucket and retardant drops. Establish LCES. Utilize air to ground primary radio channel. Reference IRPG (Safe aircraft operations pg. 56-58). Ensure IA resources have coordination with unassigned local air resources to provide deconfliction.	High
Steep Terrain/Gravity	Do not work crews above or below each other. Post lookouts for rolling material. Watch footing in loose soil, rock and around vegetation. Do not work below heavy equipment. Scout and identify travel routes. Establish LCES.	Moderate
Physical Factors	Maintain hydration schedule. Closely monitor work rate and implement rest periods. Maintain nutrition. Ensure adequate work/rest.	Moderate
Environmental Factors	Assign medical personnel to camp. Assess for known allergies and report to medical personnel. Obtain Bee Bopper/wasp spray and yellow jacket traps. Maintain an awareness of livestock. Keep an eye out for wildlife including bears, cougars, and rattlesnakes.	Moderate
Fire Behavior	Be aware of burn windows and weather impacts and min/max RH for flashy fuels/local conditions. Be aware of increased fire behavior and concerns specific to thunderstorm safety (IRPG p. 21). Report changes to FBAN and IMET. Include thunderstorm safety message in IAP.	Moderate
Unburned Fuels/Firing Ops	Establish LCES. Ensure management action points are implemented and followed. Weather updates as needed during burning operations. Locate indirect firelines to minimize the amount of unburned fuels. Follow Interagency Ignition Guide. Ensure communications between all firing operations. Establish road security at all firing sites. Follow approved firing plan for unburned fuels.	Moderate
Transportation	Signing of all incident roads that provide access to divisions. Daily updated travel plan maps. Practice defensive driving. In local communities obey the posted speed limits. Use reader boards to control entry as needed. Identify and evaluate contingency and alternate escape and travel routes.	Moderate
Communication	Evaluate for dead zones prior to engagement. Utilize human repeaters as needed. Ensure accountability of resources in problem areas.	Low
Public Interaction	Place new road closures as necessary and maintain current closures. Maintain awareness of evacuation areas and provide accurate information dissemination.	Low

Division/Group Assignment List (ICS 204 WF)
Controlled Unclassified Information//Basic

1. Incident Name:			3.			
WALKER CREEK & CHICKADEE CREEK			Branch:		Division/Group	
2. Operational Period: DAY			WALKER		A/F	
Date/Time From: 09/07/2021 0600 TUE	Date/Time To: 09/07/2021 1800 TUE					
4. Operations Personnel						
OPERATIONS CHIEF		AARON ROWE JEROMY WILSON (T); MIKE DAVIS (T)		BRANCH DIRECTOR		JERRAN FLINDERS
SAFETY OFFICER		TROY CORN; JACK CATES		DIVISION/GROUP SUPERVISOR		JASON EMHOFF
5. Resources Assigned this Period						
Strike Team / Task Force / Resource Designator	LWD	Leader	Number Persons	Drop Off PT./Time	Pick Up PT./Time	
O-436 SOF2	09/13	TAIJA CORSO	1	DP-327/0600	DP-327/1800	
E-123 ENG4 HI COUNTRY **	09/14	TYLER STEVENSON	3	DP-327/0600	DP-327/1800	
E-357 ENG5 DNR AR 7403 **	09/15	DANIEL STRALSER	4	DP-327/0600	DP-327/1800	
E-188 UTV ADVENTURE SPORT **		-- UNSTAFFED --		DP-327/0600	DP-327/1800	
E-356 AMR AMBU 3 (ALS) **	09/14	NATE GATES	2	DP-327/0600	DP-327/1800	
6. Control Operations/Work Assignments:						
<p>TASK: Secure fire line within its existing footprint. Patrol and mop up as necessary to prevent fire escape. PURPOSE: Protect property and natural resources. END STATE: Fire is contained. Structures and private property are no longer threatened.</p>						
7. Special Instructions:						
<p>** Resource will remain with Walker Creek Type 3 organization.</p> <p>Backhaul all unnecessary equipment and supplies. GPS all pump locations.</p> <p>Notify READ if cultural materials are found during mop up. Leave in place, flag and GPS. READs (B. Naples & A. Miller) will notify DIVS when entering or leaving the division.</p>						
8. Division/Group Communication Summary						
Function	Channel	RX Frequency N/W	RX Tone/NAC	TX Frequency N/W	TX Tone/NAC	Mode
COMMAND	1	170.0625	114.8	162.1750	114.8	A
COMMAND	2	170.3125	114.8	167.8375	114.8	A
COMMAND	3	170.4500	114.8	168.1000	114.8	A
COMMAND	4	172.5375	114.8	163.5500	114.8	A
TACTICAL	6	168.0500	114.8	168.0500	114.8	A
AIR TO GROUND	15	168.1375		168.1375		A
9. Prepared By (Resource Unit Leader)			Approved By (Planning Section Chief)		Date	Time
JILL JOHNSON			MARGE HUTCHINSON		09/06/2021	2000

Division/Group Assignment List (ICS 204 WF)
Controlled Unclassified Information//Basic

1. Incident Name:			3.			
WALKER CREEK & CHICKADEE CREEK			Branch:		Division/Group	
2. Operational Period: DAY			WALKER		H	
Date/Time From: 09/07/2021 0600 TUE	Date/Time To: 09/07/2021 1800 TUE					
4. Operations Personnel						
OPERATIONS CHIEF		AARON ROWE JEROMY WILSON (T); MIKE DAVIS (T)		BRANCH DIRECTOR		JERRAN FLINDERS
SAFETY OFFICER		TROY CORN; JACK CATES		DIVISION/GROUP SUPERVISOR		MATT KENNEDY
5. Resources Assigned this Period						
Strike Team / Task Force / Resource Designator	LWD	Leader	Number Persons	Drop Off PT./Time	Pick Up PT./Time	
O-436 SOF2	09/13	TAIJA CORSO	1	H30/0600	H30/1800	
C-82 HC2 NORTH REFORESTATION CO **	09/09	JOSE RINCON	20	H30/0600	H30/1800	
E-6S ENG6 WORK HORSE	09/07	TYE STRAIGHT	2	H30/0600	H30/1800	
E-129 ENG6 TONASKET E691 **	09/16	TAYLOR ORTEG	3	H30/0600	H30/1800	
E-5011 ENG6 COLORADO E681	09/09	CHAD BAKKEN	7	H30/0600	H30/1800	
E-297 WT SILVER NICKEL **	09/09	CASEY SILVERTON	1	H30/0600	H30/1800	
E-104 UTV ADVENTURE SPORT **		-- UNSTAFFED --		H30/0600	H30/1800	
6. Control Operations/Work Assignments:						
TASK: Secure fire line within its existing footprint. Patrol and mop up as necessary to prevent fire escape.						
PURPOSE: Protect property and natural resources.						
END STATE: Fire is contained. Structures and private property are no longer threatened.						
7. Special Instructions:						
** Resource will remain with Walker Creek Type 3 organization.						
Backhaul all unnecessary equipment and supplies. GPS all pump locations.						
Notify READ if cultural materials are found during mop up. Leave in place, flag and GPS.						
READs (B. Naples & A. Miller) will notify DIVS when entering or leaving the division.						
8. Division/Group Communication Summary						
Function	Channel	RX Frequency N/W	RX Tone/NAC	TX Frequency N/W	TX Tone/NAC	Mode
COMMAND	1	170.0625	114.8	162.1750	114.8	A
COMMAND	2	170.3125	114.8	167.8375	114.8	A
COMMAND	3	170.4500	114.8	168.1000	114.8	A
COMMAND	4	172.5375	114.8	163.5500	114.8	A
TACTICAL	8	168.6000	114.8	168.6000	114.8	A
AIR TO GROUND	15	168.1375		168.1375		A
9. Prepared By (Resource Unit Leader)			Approved By (Planning Section Chief)		Date	Time
JILL JOHNSON			MARGE HUTCHINSON		09/06/2021	2000

Division/Group Assignment List (ICS 204 WF)
Controlled Unclassified Information//Basic

1. Incident Name:				3.			
WALKER CREEK & CHICKADEE CREEK				Branch:		Division/Group	
2. Operational Period: DAY				WALKER		Q	
Date/Time From: 09/07/2021 0600 TUE		Date/Time To: 09/07/2021 1800 TUE					
4. Operations Personnel							
OPERATIONS CHIEF		AARON ROWE JEROMY WILSON (T); MIKE DAVIS (T)		BRANCH DIRECTOR		JERRAN FLINDERS	
SAFETY OFFICER		TROY CORN; JACK CATES		DIVISION/GROUP SUPERVISOR		MATT TRAYNHAM ** JAMES DICKINSON (T)	
5. Resources Assigned this Period							
Strike Team / Task Force / Resource Designator		LWD	Leader	Number Persons	Drop Off PT./Time	Pick Up PT./Time	
6. Control Operations/Work Assignments:							
<p>Task: Monitor fire progression and determine trigger points for firing indirect line. Evaluate the need for firing based on current, expected, and predicted weather and fuels conditions considering seasonal severity. Continue to secure fire line west of the 300 road towards DIV Q/H break. Prepare a firing plan.</p> <p>Purpose: Exposure and firefighter safety is minimized with all primary control features completed.</p> <p>End state: Fire Progression is monitored. Control features are ready and plan is ready to execute and hold indirect fire line. Fire is contained on the prepared indirect line after firing operations are complete.</p>							
7. Special Instructions:							
<p>** Resource will remain with Walker Creek Type 3 organization.</p> <p>Backhaul all unnecessary equipment and supplies. GPS all pump locations. Notify READ if cultural materials are found during mop up. Leave in place, flag and GPS. READs (B. Naples & A. Miller) will notify DIVS when entering or leaving the division.</p>							
8. Division/Group Communication Summary							
Function	Channel	RX Frequency N/W	RX Tone/NAC	TX Frequency N/W	TX Tone/NAC	Mode	
COMMAND	1	170.0625	114.8	162.1750	114.8	A	
COMMAND	2	170.3125	114.8	167.8375	114.8	A	
COMMAND	3	170.4500	114.8	168.1000	114.8	A	
COMMAND	4	172.5375	114.8	163.5500	114.8	A	
TACTICAL	11	168.2500	114.8	168.2500	114.8	A	
AIR TO GROUND	15	168.1375		168.1375		A	
9. Prepared By (Resource Unit Leader)			Approved By (Planning Section Chief)			Date	Time
JILL JOHNSON			MARGE HUTCHINSON			09/06/2021	2000

Division/Group Assignment List (ICS 204 WF)
Controlled Unclassified Information//Basic

1. Incident Name:			3.			
WALKER CREEK & CHICKADEE CREEK			Branch:		Division/Group	
2. Operational Period: DAY			WALKER		T	
Date/Time From: 09/07/2021 0600 TUE	Date/Time To: 09/07/2021 1800 TUE					
4. Operations Personnel						
OPERATIONS CHIEF		AARON ROWE JEROMY WILSON (T); MIKE DAVIS (T)		BRANCH DIRECTOR		JERRAN FLINDERS
SAFETY OFFICER		TROY CORN; JACK CATES		DIVISION/GROUP SUPERVISOR		MICHAEL JACKSON SETH JONES (T)
5. Resources Assigned this Period						
Strike Team / Task Force / Resource Designator	LWD	Leader	Number Persons	Drop Off PT./Time	Pick Up PT./Time	
O-436 SOF2	09/13	TAIJA CORSO	1	DP-372/0600	DP-372/1800	
O-474 TFLD **	09/08	AL MCGUIRE	1	DP-372/0600	DP-372/1800	
O-476 TFLD (T) **	09/09	CONNOR ENGLAND	1	DP-372/0600	DP-372/1800	
O-495 HEQB **	09/14	TOM SHEDD	1	DP-372/0600	DP-372/1800	
O-23 FMOD BAILEY LOGGING **	09/10	TAYLOR EVANS	2	DP-372/0600	DP-372/1800	
C-88 HC2 I-S-A SERVICES **	09/15	GUSTAVO BUENO	20	DP-372/0600	DP-372/1800	
E-116 ENG6 TORCH FIRE AND SECURITY **	09/08	TRINITY KRIVANEC	3	DP-372/0600	DP-372/1800	
E-338 ENG6 AEGIS LOGISTICS **	09/11	ROY VARNEY	3	DP-372/0600	DP-372/1800	
E-339 ENG6 BLACK PINE CONTRACTING **	09/12	JOE BEATTY	3	DP-372/0600	DP-372/1800	
E-340 ENG6 STCN 11 B11-14 **	09/12	ZAK BEER	3	DP-372/0600	DP-372/1800	
E-105 UTV ADVENTURE SPORT **		-- UNSTAFFED --		DP-372/0600	DP-372/1800	
6. Control Operations/Work Assignments:						
TASK: Secure fire line within its existing footprint. Patrol and mop up as necessary to prevent fire escape. PURPOSE: Protect property and natural resources. END STATE: Fire is contained. Structures and private property are no longer threatened.						
7. Special Instructions:						
** Resource will remain with Walker Creek Type 3 organization. Backhaul all unnecessary equipment and supplies. GPS all pump locations. Notify READ if cultural materials are found during mop up. Leave in place, flag and GPS. READs (B. Naples & A. Miller) will notify DIVS when entering or leaving the division.						
8. Division/Group Communication Summary						
Function	Channel	RX Frequency N/W	RX Tone/NAC	TX Frequency N/W	TX Tone/NAC	Mode
COMMAND	1	170.0625	114.8	162.1750	114.8	A
COMMAND	2	170.3125	114.8	167.8375	114.8	A
COMMAND	3	170.4500	114.8	168.1000	114.8	A
COMMAND	4	172.5375	114.8	163.5500	114.8	A
TACTICAL	9	166.7250	114.8	166.7250	114.8	A
AIR TO GROUND	15	168.1375		168.1375		A
9. Prepared By (Resource Unit Leader)		Approved By (Planning Section Chief)		Date		Time
JILL JOHNSON		MARGE HUTCHINSON		09/06/2021		2000

Division/Group Assignment List (ICS 204 WF)
Controlled Unclassified Information//Basic

1. Incident Name:			3.			
WALKER CREEK & CHICKADEE CREEK			Branch:		Division/Group	
2. Operational Period: DAY			WALKER		REPAIR GROUP	
Date/Time From: 09/07/2021 0600	TUE	Date/Time To: 09/07/2021 1800				
4. Operations Personnel						
OPERATIONS CHIEF		AARON ROWE; JEROMY WILSON (T) MIKE DAVIS (T)		BRANCH DIRECTOR		JERRAN FLINDERS
SAFETY OFFICER		TROY CORN; JACK CATES		DIVISION/GROUP SUPERVISOR		
5. Resources Assigned this Period						
Strike Team / Task Force / Resource Designator		LWD	Leader	Number Persons	Drop Off PT./Time	Pick Up PT./Time
O-479 TFLD (T) **		09/16	DANIELLE SPENDLOVE	1	TBD/0600	TBD/1800
E-23 WTS1 OROVILLE TRANSIT MIX **		09/15	CHRIS WOOLEY	3	TBD/0600	TBD/1800
E-174 WTS2 STOTTS CONSTRUCTION **		09/11	DAVID HARCOURT	1	TBD/0600	TBD/1800
E-349 WTS2 SC RIVER LMS **		09/13	TIM SCIVER	1	TBD/0600	TBD/1800
E-351 WTS2 TIMBERLINE TRUCKING **		09/12	CALVIN GARRISON	1	TBD/0600	TBD/1800
E-373 WTS2 PECN 4 - T43 **		09/17	JOEL HOISINGTON	1	TBD/0600	TBD/1800
E-372 GRD TOP GRADE T1 GRADER **		09/18	MICHAEL FRIEND	2	TBD/0600	TBD/1800
E-1S DOZ3 JONES LOGGING **		09/11	JASON JONES	2	TBD/0600	TBD/1800
6. Control Operations/Work Assignments:						
<p>TASK: Work with Resource advisors to repair roads and interior dozer lines. Purpose: Return to preexisting conditions to prevent any further resource damage. End State: Roads and Interior dozer line are repaired prior to next big weather event.</p>						
7. Special Instructions:						
** Resource will remain with Walker Creek Type 3 organization.						
8. Division/Group Communication Summary						
Function	Channel	RX Frequency N/W	RX Tone/NAC	TX Frequency N/W	TX Tone/NAC	Mode
COMMAND	1	170.0625	114.8	162.1750	114.8	A
COMMAND	2	170.3125	114.8	167.8375	114.8	A
COMMAND	3	170.4500	114.8	168.1000	114.8	A
COMMAND	4	172.5375	114.8	163.5500	114.8	A
TACTICAL	SEE COMMO					
AIR TO GROUND	15	168.1375		168.1375		A
9. Prepared By (Resource Unit Leader)			Approved By (Planning Section Chief)		Date	Time
JILL JOHNSON			MARGE HUTCHINSON		09/06/2021	2000

Division/Group Assignment List (ICS 204 WF)
Controlled Unclassified Information//Basic

1. Incident Name:				3.		
WALKER CREEK & CHICKADEE CREEK				Branch:	Division/Group C	
2. Operational Period: DAY						
Date/Time From: 09/07/2021 0600 TUE		Date/Time To: 09/07/2021 1800 TUE				
4. Operations Personnel						
OPERATIONS CHIEF		AARON ROWE JEROMY WILSON (T); MIKE DAVIS (T)		BRANCH DIRECTOR		
SAFETY OFFICER		TROY CORN; JACK CATES		DIVISION/GROUP SUPERVISOR		BOB HINDS
5. Resources Assigned this Period						
Strike Team / Task Force / Resource Designator	LWD	Leader	Number Persons	Drop Off PT./Time	Pick Up PT./Time	
O-436 SOF2	09/13	TAIJA CORSO	1	SPEARS RANCH/0600	SPEARS RANCH/1800	
O-377 TFLD	09/07	STEPHEN DECOOK	1	SPEARS RANCH/0600	SPEARS RANCH/1800	
O-423 TFLD (T) **	09/09	KYLE BUCKMILLER	1	SPEARS RANCH/0600	SPEARS RANCH/1800	
O-457 HEQB (T) **	09/10	AARON NELSON	1	SPEARS RANCH/0600	SPEARS RANCH/1800	
O-490 HEQB (T)	09/15	ERIC WEINKE	1	SPEARS RANCH/0600	SPEARS RANCH/1800	
O-9002 READ (LOAN)	09/19	SKYLER GOODRICH	1	SPEARS RANCH/0600	SPEARS RANCH/1800	
O-9006 READ (LOAN)	09/19	MATT SMITH	1	SPEARS RANCH/0600	SPEARS RANCH/1800	
C-90 HC2 STEELHEAD ENTERPRISES **	09/15	JAKE PLACE	20	SPEARS RANCH/0600	SPEARS RANCH/1800	
C-9003 HC2I HIGHLANDS (LOAN) **	09/19	SETH SCHERTENLEIB	20	SPEARS RANCH/0600	SPEARS RANCH/1800	
E-358 ENG6 ALDER CREEK FIRE	09/14	EDUARDO RODRIGUEZ	2	SPEARS RANCH/0600	SPEARS RANCH/1800	
DNR STRIKE TEAM				SPEARS RANCH/0600	SPEARS RANCH/1800	
O- STEN **		CRAIG DIBBLE	1	SPEARS RANCH/0600	SPEARS RANCH/1800	
O- STEN (T) **		DANIEL MONTANO	1	SPEARS RANCH/0600	SPEARS RANCH/1800	
E- ENG5 DNR ENG 7202 (LOAN) **				SPEARS RANCH/0600	SPEARS RANCH/1800	
E- ENG5 DNR ENG 7208 (LOAN) **				SPEARS RANCH/0600	SPEARS RANCH/1800	
E- ENG5 DNR ENG 7308 (LOAN) **				SPEARS RANCH/0600	SPEARS RANCH/1800	
8. Division/Group Communication Summary						
Function	Channel	RX Frequency N/W	RX Tone/NAC	TX Frequency N/W	TX Tone/NAC	Mode
COMMAND	1	170.0625	114.8	162.1750	114.8	A
COMMAND	2	170.3125	114.8	167.8375	114.8	A
COMMAND	3	170.4500	114.8	168.1000	114.8	A
COMMAND	4	172.5375	114.8	163.5500	114.8	A
TACTICAL	10	166.7750	114.8	166.7750	114.8	A
AIR TO GROUND	13	170.2625		170.2625		A
9. Prepared By (Resource Unit Leader)			Approved By (Planning Section Chief)		Date	Time
JILL JOHNSON			MARGE HUTCHINSON		09/06/2021	2000

Division/Group Assignment List (ICS 204 WF)
Controlled Unclassified Information//Basic

1. Incident Name:				3.		
WALKER CREEK & CHICKADEE CREEK				Branch:	Division/Group C	
2. Operational Period: DAY						
Date/Time From: 09/07/2021 0600 TUE		Date/Time To: 09/07/2021 1800 TUE				
4. Operations Personnel						
OPERATIONS CHIEF		AARON ROWE JEROMY WILSON (T); MIKE DAVIS (T)		BRANCH DIRECTOR		
SAFETY OFFICER		TROY CORN; JACK CATES		DIVISION/GROUP SUPERVISOR		BOB HINDS
5. Resources Assigned this Period						
Strike Team / Task Force / Resource Designator		LWD	Leader	Number Persons	Drop Off PT./Time	Pick Up PT./Time
E- ENG5 DNR ENG 7408 (LOAN) **					SPEARS RANCH/0600	SPEARS RANCH/1800
E- ENG5 TENNESSEE ENG 30 (LOAN) **					SPEARS RANCH/0600	SPEARS RANCH/1800
E-16C WTS2 S PEND OREILLE T33		09/08	PAUL HAA	1	SPEARS RANCH/0600	SPEARS RANCH/1800
E-136 WTS2 OVERWATCH		09/08	ANDY ROMERO	1	SPEARS RANCH/0600	SPEARS RANCH/1800
E-352 WTS2 H & H FIRE CONTRACTING **		09/12	TOM FERRO	1	SPEARS RANCH/0600	SPEARS RANCH/1800
E-14C EXCA WILL LOGGING & CONSTR **		09/11	GARY WILL	1	SPEARS RANCH/0600	SPEARS RANCH/1800
E-15C EXCA GASHO & GASHO		09/12	JUBLE MILLER	2	SPEARS RANCH/0600	SPEARS RANCH/1800
E-18C SKD2 RIDGELINE FORESTRY		09/13	MICHAEL GOETZ	2	SPEARS RANCH/0600	SPEARS RANCH/1800
E-26 SKG1 WYEAST FORESTRY MANAGEMENT		09/14	BOYD GOLDFINCH	2	SPEARS RANCH/0600	SPEARS RANCH/1800
E-190 UTV ADVENTURE SPORT **			-- UNSTAFFED --		SPEARS RANCH/0600	SPEARS RANCH/1800
E-55 AMBU PEND OREILLE AMBU 2 (ALS) **		09/11	JOHNNY SYLVESTER	2	SPEARS RANCH/0600	SPEARS RANCH/1800
6. Control Operations/Work Assignments:						
TASK: Secure fire line within its existing footprint. Patrol and mop up as necessary to prevent fire escape. PURPOSE: Protect property and natural resources. END STATE: Fire is contained. Structures and private property are no longer threatened.						
7. Special Instructions:						
** Resource will remain with Chickadee Creek Type 4 organization. Backhaul all unnecessary equipment and supplies. GPS all pump locations.						
8. Division/Group Communication Summary						
Function	Channel	RX Frequency N/W	RX Tone/NAC	TX Frequency N/W	TX Tone/NAC	Mode
COMMAND	1	170.0625	114.8	162.1750	114.8	A
COMMAND	2	170.3125	114.8	167.8375	114.8	A
COMMAND	3	170.4500	114.8	168.1000	114.8	A
COMMAND	4	172.5375	114.8	163.5500	114.8	A
TACTICAL	10	166.7750	114.8	166.7750	114.8	A
AIR TO GROUND	13	170.2625		170.2625		A
9. Prepared By (Resource Unit Leader)			Approved By (Planning Section Chief)		Date	Time
JILL JOHNSON			MARGE HUTCHINSON		09/06/2021	2000

Division/Group Assignment List (ICS 204 WF)
Controlled Unclassified Information//Basic

1. Incident Name:				3.		
WALKER CREEK & CHICKADEE CREEK				Branch:	Division/Group K/O	
2. Operational Period: DAY						
Date/Time From: 09/07/2021 0600 TUE		Date/Time To: 09/07/2021 1800 TUE				
4. Operations Personnel						
OPERATIONS CHIEF		AARON ROWE JEROMY WILSON (T); MIKE DAVIS (T)		BRANCH DIRECTOR		
SAFETY OFFICER		TROY CORN; JACK CATES		DIVISION/GROUP SUPERVISOR		EDWARD LEBLANC ** SAM STEINSHOUER (T)
5. Resources Assigned this Period						
Strike Team / Task Force / Resource Designator	LWD	Leader	Number Persons	Drop Off PT./Time	Pick Up PT./Time	
O-436 SOF2	09/13	TAIJA CORSO	1	SPEARS RANCH/0600	SPEARS RANCH/1800	
O-376 TFLD **	09/11	BENNY MENDOZA	1	SPEARS RANCH/0600	SPEARS RANCH/1800	
O-432 HEQB **	09/09	DAVID MORRILL	1	SPEARS RANCH/0600	SPEARS RANCH/1800	
C-71 HC2 TORRES CONTRACTING CREW-11	09/08	EMILIO MELGAREJO	20	SPEARS RANCH/0600	SPEARS RANCH/1800	
C-81 HC2 LAVA RIVER FORESTRY 4 **	09/09	JOSH MARTINEZ	20	SPEARS RANCH/0600	SPEARS RANCH/1800	
E-359 ENG6 PENC 2 BR25 **	09/15	STEVE HUGHES	2	SPEARS RANCH/0600	SPEARS RANCH/1800	
E-360 ENG3 ROGUE RIVER FIRE, WATER **	09/15	TIM KELLER	3	SPEARS RANCH/0600	SPEARS RANCH/1800	
E- ENG5 DNR ENG 7101 (LOAN)			3	SPEARS RANCH/0600	SPEARS RANCH/1800	
E- ENG5 DNR ENG 7106 (LOAN)			3	SPEARS RANCH/0600	SPEARS RANCH/1800	
E- ENG5 DNR ENG 7110 (LOAN)			3	SPEARS RANCH/0600	SPEARS RANCH/1800	
E-22 WTS2 RAINS CONTRACTING **	09/11	RON STODDARD	1	SPEARS RANCH/0600	SPEARS RANCH/1800	
E-176 WTS2 BTNG WILDFIRE **	09/15	LUKE JOHNSON	1	SPEARS RANCH/0600	SPEARS RANCH/1800	
E-348 SKD1 TURLEY LOGGING **	09/12	CODY HUBBARD	2	SPEARS RANCH/0600	SPEARS RANCH/1800	
8. Division/Group Communication Summary						
Function	Channel	RX Frequency N/W	RX Tone/NAC	TX Frequency N/W	TX Tone/NAC	Mode
COMMAND	1	170.0625	114.8	162.1750	114.8	A
COMMAND	2	170.3125	114.8	167.8375	114.8	A
COMMAND	3	170.4500	114.8	168.1000	114.8	A
COMMAND	4	172.5375	114.8	163.5500	114.8	A
TACTICAL	7	168.2000	114.8	168.2000	114.8	A
AIR TO GROUND	13	170.2625		170.2625		A
9. Prepared By (Resource Unit Leader)			Approved By (Planning Section Chief)		Date	Time
JILL JOHNSON			MARGE HUTCHINSON		09/06/2021	2000

Division/Group Assignment List (ICS 204 WF)
Controlled Unclassified Information//Basic

1. Incident Name:				3.		
WALKER CREEK & CHICKADEE CREEK				Branch:	Division/Group K/O	
2. Operational Period: DAY						
Date/Time From: 09/07/2021 0600 TUE		Date/Time To: 09/07/2021 1800 TUE				
4. Operations Personnel						
OPERATIONS CHIEF		AARON ROWE JEROMY WILSON (T); MIKE DAVIS (T)		BRANCH DIRECTOR		
SAFETY OFFICER		TROY CORN; JACK CATES		DIVISION/GROUP SUPERVISOR		EDWARD LEBLANC ** SAM STEINSHOUER (T)
5. Resources Assigned this Period						
Strike Team / Task Force / Resource Designator		LWD	Leader	Number Persons	Drop Off PT./Time	Pick Up PT./Time
E-109 UTV ADVENTURE SPORT **			-- UNSTAFFED --		SPEARS RANCH/0600	SPEARS RANCH/1800
O-461 EMPF **		09/11	KYLE MEADE	1	SPEARS RANCH/0600	SPEARS RANCH/1800
6. Control Operations/Work Assignments:						
<p>TASK: Secure fire line within its existing footprint. Patrol and mop up as necessary to prevent fire escape. PURPOSE: Protect property and natural resources. END STATE: Fire is contained. Structures and private property are no longer threatened.</p>						
7. Special Instructions:						
<p>** Resource will remain with Chickadee Creek Type 4 organization.</p> <p>Backhaul all unnecessary equipment and supplies. GPS all pump locations.</p>						
8. Division/Group Communication Summary						
Function	Channel	RX Frequency N/W	RX Tone/NAC	TX Frequency N/W	TX Tone/NAC	Mode
COMMAND	1	170.0625	114.8	162.1750	114.8	A
COMMAND	2	170.3125	114.8	167.8375	114.8	A
COMMAND	3	170.4500	114.8	168.1000	114.8	A
COMMAND	4	172.5375	114.8	163.5500	114.8	A
TACTICAL	7	168.2000	114.8	168.2000	114.8	A
AIR TO GROUND	13	170.2625		170.2625		A
9. Prepared By (Resource Unit Leader)			Approved By (Planning Section Chief)		Date	Time
JILL JOHNSON			MARGE HUTCHINSON		09/06/2021	2000

DNR IMT Mop UP STANDARDS

Department of Natural Resources
Walker Creek WA-NES-2021-2245
Chickadee Creek WA-NES-2021-2310

These standards may be adjusted and modified as the incident progresses, but are intended to give the IMT direction for planning. Mop-up specifications apply only to DNR protected lands at this time. Rehab standards will be developed based on landowner objectives once the incident is controlled. Other agencies will provide specific direction for their jurisdictions.

Mop-Up Specifications

Always consider over-head hazards prior to putting fire fighters in harm's way for mop up. Mitigate hazards and exposure as needed.

Achieve 100% mop-up along and inside the fire perimeter to a distance that is adequate to ensure the perimeter is secure to prevent the fire from escaping across existing containment lines.

To reduce hazards to firefighters during final mop-up, fall snags that pose "imminent" danger along all open roads within the fire perimeter.

Known spot fires outside the control lines will be 100% mopped up where appropriate to do so, a route to them will be flagged, and the perimeter of spots mapped in GIS.

Mop-up of partially burned areas further inside the lines will be determined on a case-by-case basis.

For structures and sensitive resources within the interior of the fire line, mop-up to a level to ensure that there will be no future effects from the fire.

As mop-up specifications are met on a Division, Operations will develop a plan for the resources and equipment to be left in place that may be required for future contingency actions.

Mop-up will be verified by aerial infrared equipment and/or gridded prior to fire turn back to Land Manager or Protecting Agency.

Notify Agency Representative if a cultural site is found during mop-up.

DNR Agency Representative Name: Brett Walker 509-680-4029

AIR OPERATIONS SUMMARY

Controlled Unclassified Information//Basic

PREPARED BY: Virgil Lookingback ASGS (t)

PREPARED DATE/TIME: 9/6/2021 1900

1. INCIDENT NAME: Walker Cr. /Chickadee Cr.		2. OPERATIONAL PERIOD DATE: 9/7/21 START TIME: 0800 END TIME: 2000 SUNRISE: 0623 SUNSET: 1929 Pumpkin 1959			
3. REMARKS (Safety Notes, Hazards, Air Operations Special Equipment, etc.):					
<ul style="list-style-type: none"> • Review known Aerial Hazard Map prior to low level missions. • Assess mission complexity and the Benefit/Risk of the mission. • Ensure visibility and winds are adequate to safely conduct flight operations. • Ensure safe vertical & horizontal separation between aircraft in smoky conditions. Call in and out of the dips. 					
5. Helibase location Omak (OMK) 48-27.864617N 119-31.083250W Elev: 1,304' Unicom: OMK: 122.8 Tonasket W01: 122.9		6. TFR information Walker 1/7944 7NM SFC-9500FT Active: 0700-2100 Chickadee 1/7942 5NM SFC-9500FT Active: 0700-2100	7. FIXED WING	SEATS/Fireboss: Available out of Omak. Order through NEWICC. ATGS Platform: Order as needed through NEWICC.	
8. PERSONNEL		Phone	9. FREQUENCIES	FM	AM
HEBM Virgil Lookingback		928-899-0810	A/G Walker Pri	168.1375	
HEBM (t) Dylan Kane		609-651-7431	A/G Walker Sec	169.5625	
			A/G Chickadee Pri	170.2625	
			TFR 1/9445 Walker		118.125
			A/A Walker Rotor		126.3500
			TFR 1/9449 Chickadee		118.775
NE Washington Dispatch (NEWICC)		509-685-6900	A/A Chickadee Rotor		126.6250
			A/G Ignitions Discreet	167.8375	
Colville UAO Ben Renfro		541-589-0452	DNR Flight Follow	151.3475 Tx(136.5)	
			Air Guard	168.6250 Tx(110.9)	

4. Ready Alert aircraft:
Order ALS air ambulance (Lifeflight) through NEWICC Dispatch. Closest ALS helicopters are out of Brewster, WA with a 25 min flight time to the Walker fire.

Special remarks:
Wenatchee Short Haul 3JR at Lake Chelan, WA Airport. Response time roughly 45min to incident. Order thru AOB.

Review Military Training Route activity and status each morning prior to missions.

Aviation Support Equipment:
Helibase Support Trailer E-209 @ Omak Helibase

Email cost to:
WalkerSpur.Aviation@gmail.com

Mission Requests:
Air Attack: Requested through NEWICC as needed.
Lead Plane/Airtankers: Requested through NEWICC as needed.
Helicopters: Requested through Omak Helibase.

10. Helicopters	TY	MAKE/MODEL	BASE	START	AVAIL	REMARKS
N7CU (A-174) / Hogue	1	CH-47D	OMK	0800	0830	EU / Bucket
N12HX (A-204) / Carpenter	3	Bell 407	OMK	0800	0830	EU / HMGB +9

Approved By: Virgil Lookingback ASGS(t)

INCIDENT RADIO COMMUNICATIONS PLAN (ICS 205)

Controlled Unclassified Information//Basic

1. Incident Name:	2. Date/Time Prepared:	3. Operational Period: DAY	
WALKER CREEK & CHICKADEE CREEK	Date: 09/06/2021 Time: 2000	Date/Time From: 09/07/2021 0600 TUE	Date/Time To: 09/07/2021 1800 TUE

4. Basic Radio Channel Use:

Zone Group	Ch #	Function	Channel Name/Trunked Radio System Talkgroup	Assignment	RX Freq	RX Tone/NAC	TX Freq	TX Tone/NAC	Mode (A,D, or M)	Remarks
	1	COMMAND	CMD1	ALL RESOURCES	170.0625	114.8	162.1750	114.8	A	LINKED TO CMD2, CMD3 & CMD4
	2	COMMAND	CMD2	ALL RESOURCES	170.3125	114.8	167.8375	114.8	A	LINKED TO CMD1, CMD 3 & CMD4
	3	COMMAND	CMD3	ALL RESOURCES	170.4500	114.8	168.1000	114.8	A	LINKED TO CMD1, CMD2 & CMD4
	4	COMMAND	CMD 4	ALL RESOURCES	172.5375	114.8	163.5500	114.8	A	LINKED TO CMD1, CMD2 & CMD3
	5	COMMAND	DNR TON	ALL RESOURCES	159.3675	118.8	151.2575	156.7	A	DNR TONASKET DISPATCH
	6	TACTICAL	TAC 6	DIV A / F	168.0500	114.8	168.0500	114.8	A	NIFC TAC
	7	TACTICAL	TAC 7	DIV K / O	168.2000	114.8	168.2000	114.8	A	NIFC TAC
	8	TACTICAL	TAC 8	DIV H	168.6000	114.8	168.6000	114.8	A	NIFC TAC
	9	TACTICAL	TAC 9	DIV T	166.7250	114.8	166.7250	114.8	A	NIFC TAC
	10	TACTICAL	TAC 10	DIV C	166.7750	114.8	166.7750	114.8	A	NIFC TAC
	11	TACTICAL	TAC 11	DIV Q	168.2500	114.8	168.2500	114.8	A	NIFC TAC
	12	TACTICAL	RED NET	ALL RESOURCES	153.8300		153.8300	156.7	A	EMS AMBU/AIR UNITS
	13	AIR TO GROUND	A/G CHICK	A/G CHICKADEE	170.2625		170.2625		A	NIFC A/G
	14	AIR TO GROUND	A/G SECONDARY	A/G SECONDARY	169.5625		169.5625		A	NIFC A/G
	15	AIR TO GROUND	A/G WALKER	A/G WALKER	168.1375		168.1375		A	NIFC A/G
	16	AIR GUARD	AIRGUARD	ALL RESOURCES	168.6250		168.6250	110.9	A	EMERGENCY USE ONLY

5. Special Instructions: REPAIR GROUP - USE TAC CHANNEL OF THE DIVISION YOU ARE WORKING. CALL IN TO COMMUNICATIONS TO VERIFY DIVISION WORKING IN. LAST CLONE Revision: WALKER082821. Communications Phone # (206) 473-9053

6. Prepared By (Communications Unit Leader)	Name: MISSY PARKER	Signature: <i>Missy Parker</i>
ICS 205	IAP Page	Date/Time: 09/06/2021 2000

Controlled Unclassified Information//Basic

WALKER CREEK FIRE DEMOB LIST

Tuesday September 7, 2021

DEMOB INSTRUCTIONS

Paperless and electronic demobilization will be used to the extent possible for all resources. **PLEASE LOOK closely at the Fire Name and Resource Number.** All finance documents will be emailed and signed virtually. Ensure all Final CTR's and Shift Tickets **ARE KEPT UP TO DATE** with Finance. Please be **PATIENT** as the phone lines are limited and it takes a little longer for the virtual process. For **FLIGHT** arrangements, call 206-473-1425 at least 48 hours before you demob.

DEMOB STEPS

(Must Be Done In Order)

1. If you have any items checked out by Supply and Communications, proceed to those areas to turn in equipment. If you don't have any items checked out, proceed to NEXT STEP.
2. If you were inspected upon arrival or need a No Claims/No Comp receipt, check out with Ground Support. If this does not apply, proceed to NEXT STEP.
3. Call Finance at 509-423-6011 or 509-433-1115 or 509-531-7418 to finalize paperwork.
4. Call DMOB at 206-473-1425 or 509-432-6143 to complete the process to be released.

***** CHICKADEE CREEK *****

EQUIPMENT

E-12	0630	DOZ2	KENNETH & DIANE SASSE
E-197	1700	SKG3	TUNK CREEK
E-25	1800	EXCA	DOUBLE A LOGGING

***** WALKER CREEK *****

EQUIPMENT

E-136	0600	WTS3	OVERWATCH ENTERPRISE
E-138	0600	SKG1	SOFTTRACK ATTACK
E-115	0615	ENG3	OUTBACK FIREFIGHTING
E-255	0630	ENG4	ENGINE T4 WILDFIRE
E-336	0630	ENG5	KALISPEL BRUSH 1
E-337	0645	ENG6	GENERAL CONTRACTOR
E-177	1400	WTS1	DOUBLE A LOGGING
E-362	1400	ENG5	SPKN VALLEY BRUSH 3
E-112	1600	SKDS	SOFTTRACK ATTACH

OVERHEAD

O-350	0600	FAL2	FISCHER, CORY
O-503	0600	THSP	GEORGE, TRISHA
O-410	0600	READ	WILSON, MACKENZIE
O-393	0700	EMPF	BYRD, ROSS
O-245	0700	EMPF	SEWELL, RICHARD
O-346	2000	DOCL	SMITH, DEIDRE

Walker Creek/Chickadee Fires COVID-19 Information

Who should be PCR tested for COVID-19?

- If you develop COVID-like symptoms/are made aware of close contact with someone who tests positive for COVID-19, **contact the NW Team 12 Health Liaison at 509-675-3504** to make testing arrangements.

What happens if I test positive?

- If you test positive for COVID-19 but have mild or no symptoms, NW Team 12 has a plan in place to keep firefighters working while safely isolated from other crews. A positive test does not automatically mean you will be isolated and unable to work. **It is imperative that you notify your supervisor of positive test results** if you are tested somewhere other than our designated locations on the fire, so that we can manage your working isolation away from other resources.
- If you test positive and your symptoms are more severe, NW Team 12 will work with Okanogan County Public Health to find the best solution for your isolation and recovery in coordination with your home unit.

What happens if I choose not to be tested?

- Firefighters who are not tested and have NO COVID-19 symptoms will be allowed to keep working, but will be isolated from other crews to prevent further spread from unidentified cases.
- Firefighters who choose not to be tested but ARE displaying COVID-19 like symptoms will be required to isolate according to Okanogan County Public Health recommendations and will not be allowed to continue working.

When and how will I get my test results?

- With the current backlog of tests at area labs, your test results may not be available for 24-48 hours, or in some cases longer. There will be no change to your work status while we await results. You will be able to access your results online as soon as they are available. Details will be provided to you when you are tested.

Is rapid testing available?

- Rapid testing is available at all times, however these tests are most accurate for symptomatic patients and might not catch someone who is asymptomatic but still carrying COVID-19, which is why we recommend PCR testing for firefighters who might have been exposed but are not showing symptoms.

For more information about testing or getting a COVID-19 Vaccine, visit <https://okanogancountycovid19.org/>

IF YOU WERE TESTED ON THE WALKER CREEK/CHICKADEE FIRE: DUE TO OVERWHELMING CASE LOADS, OKANOGAN COUNTY PUBLIC HEALTH IS ONLY NOTIFYING POSITIVE CASES OF THEIR TEST RESULTS. IF YOU HAVE NOT BEEN CONTACTED BY OKANOGAN COUNTY PUBLIC HEALTH OR COVID PERSONNEL ASSIGNED TO THE FIRE, YOUR TEST WAS NEGATIVE.

WALKER CREEK/CHICKADEE FIRE COVID-19 MITIGATIONS

Supervisors are required to go over this list each morning with assigned resources- report any symptoms to medical unit. **take temperature with no touch thermometer, if available**

In the last 24 hours have you experienced:

- Cough more than expected?
- Shortness of breath or difficulty breathing?
- Fever? Chills?
- Sore throat?
- New loss of taste or smell?
- Fatigue, outside your normal for firefighting?
- Headache, outside your normal for firefighting?
- Congestion or runny nose?
- Nausea or vomiting
- Diarrhea

- **All personnel are required to wear a mask at all times, whether indoors or outdoors, unless working alone or actively engaged in firefighting on the fireline.**
- **Use radio or Zoom link provided to join briefings remotely.**
- **Observe 6ft Distancing at all times.**
- **Send crew representatives to pick up meals - masks must be worn in food lines.**
- **Wash hands frequently and disinfect high-traffic areas on a regular basis.**
- **Limit close contact between firefighters and the public to prevent exposure and spread. WEAR A MASK AT ALL TIMES WHILE IN PUBLIC PLACES.**



Human Resource Message

Susie Manezes, NW Team 12 HRSP Contact: 602-571-9327



Walker Creek and Chickadee Creek Fires, September 7, 2021

Thank you for a job well done... and a few reminders:



- Communication is critical during this time of transition. Do not assume everyone is on the same page. Ask questions for clarity as your safety is the number one objective, always.
- If you are demobing and traveling home, please be rested prior to your travel. While in travel status, we are still on duty and our agencies have an expectation for all of us to adhere to policy regarding appropriate conduct and behavior. We are always in the public's eye and they expect to see professionals acting professional.
- Please pay attention to your speed, watch out for pedestrians or bicyclists along the roadways. We are coming out of a holiday weekend and most likely, tourists are on their way home or in route to their next destination. Also, children are heading back to school so anticipate their presence.
- Please continue to follow COVID protocols for everyone's wellbeing.
- Thank you to all fire personnel for a job well done! We have a lot of fire season left and we expect we will see you again, real soon. Take care and get some good rest so you are ready for the next assignment.
- For those retiring from service, Thank You for your years of service and commitment. You will be missed but not forgotten.



Quote for the day: "Any job very well done that has been carried out by a person who is fully dedicated is always a source of inspiration." -Carlos Ghosn



Logistics Message
Omak Base Camp

Kitchen Hours

0600 to 0900 Breakfast

1800 to 2100 Dinner

Supply/Cache Hours

0530-2130

Shower Hours

0430-1300 Open

1400-2300 Open

Ground Support

0500-2200



Walker Creek and Chickadee Creek Fire

Finance Message

2021.walkercreek.finance@firenet.gov

For all agency, casual hire & Co-Ops Call **Carol at (509) 433-1115**

For all Contract Resources (VIPR) Call **Todd (509) 939-9262**

DNR Hire at Fire Call **Mark (509)531-7418**

Make sure that your CTR and ST have the correct fire that you are working on.
Please make sure to call the appropriate person for assistance.

*** Finance is all virtual. When you call us to demob we will tell you what we need from you. Those that are in a location where there is no cell service, as soon as you get into the cell range please call us with all your time and we will tell where to send it.*

We will be processing OF-288s and 286s all day. Finance will not need you here to process these, so you can head home after you have completed the demob process. We will send time to your email that you provide us by the end of the day.

With our team timing out it's important to close out with us by Tuesday 9/7 if you have already started the demob process. This means closing out your time via email, please help us by getting this done in a timely manner.

We got the email fixed 😊 Please send your time to the Walker Creek email box only. Please stop sending to other mailboxes. It's taking us more time to sort through the duplicates that we are receiving. If we need something from you, we will call and request what we need.

Thank you for your patience and understanding

Note to Contractors with transports

For all heavy equipment with a transport, two operators must be shown on the shift ticket for the transport to receive full pay.

Incident Maps

How to Download Maps in Avenza

If you're cell signal is poor you may need to connect to a wifi to download maps. However sometimes being connected to a wifi can slow map downloads. You'll just have to find out what works best.

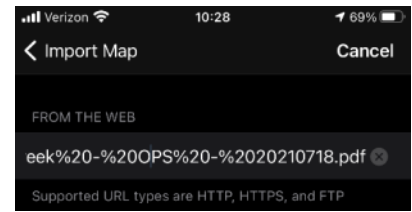
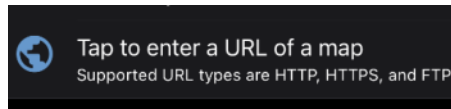
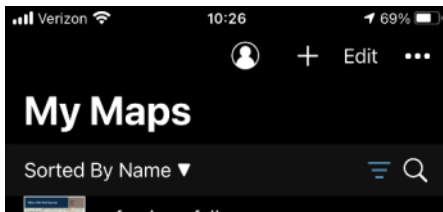
Method 1: From a browser - If you have a good cell or wifi signal

1. Tap on the desired map link and wait for the preview. *If it fails to load, use method 2 instead*
2. Tap the 'send to' icon (square with up arrow)
3. Choose the Avenza app



Method 2: From Avenza direct – if you don't have a good cell or wifi signal

1. Tap and hold on the desired map link, then choose 'copy' to copy the direct URL to the map
2. Launch the Avenza app
3. When not in any map... Tap the + (plus) icon at the top of the screen
4. Choose the load from URL option (last choice)
5. Paste the direct URL to the map
6. Tap 'Done' ; the map will begin downloading



How to Send Map Updates to the Situation Unit

1. From within the map in Avenza, click the pin with three lines near the lower-right corner.
2. *iPhone:* In the lower right, click the square with up arrow. From the pop-up menu, choose Export to Others.
Android: In the lower right, click the circle with three lines. Click the pop-up circle with up arrow.
3. Set these options:
 - a. Filename – leave alone
 - b. Export Format – choose SHP, GPX or KML
 - c. Data – all features
 - d. Image size – no image
4. Click the Export button in the upper-right corner.
5. When the export is ready, choose your Mail application.
6. Email the update to 2021.walkercreek.situation@firenet.gov for the Walker Creek Fire map updates or 2021.chickadeecreek.situation@firenet.gov for the Chickadee Fire map updates.
7. If you have questions, call or text the Situation Unit at 360-584-3373.
8. Your email needs to include an explanation of the data and a contact phone number.

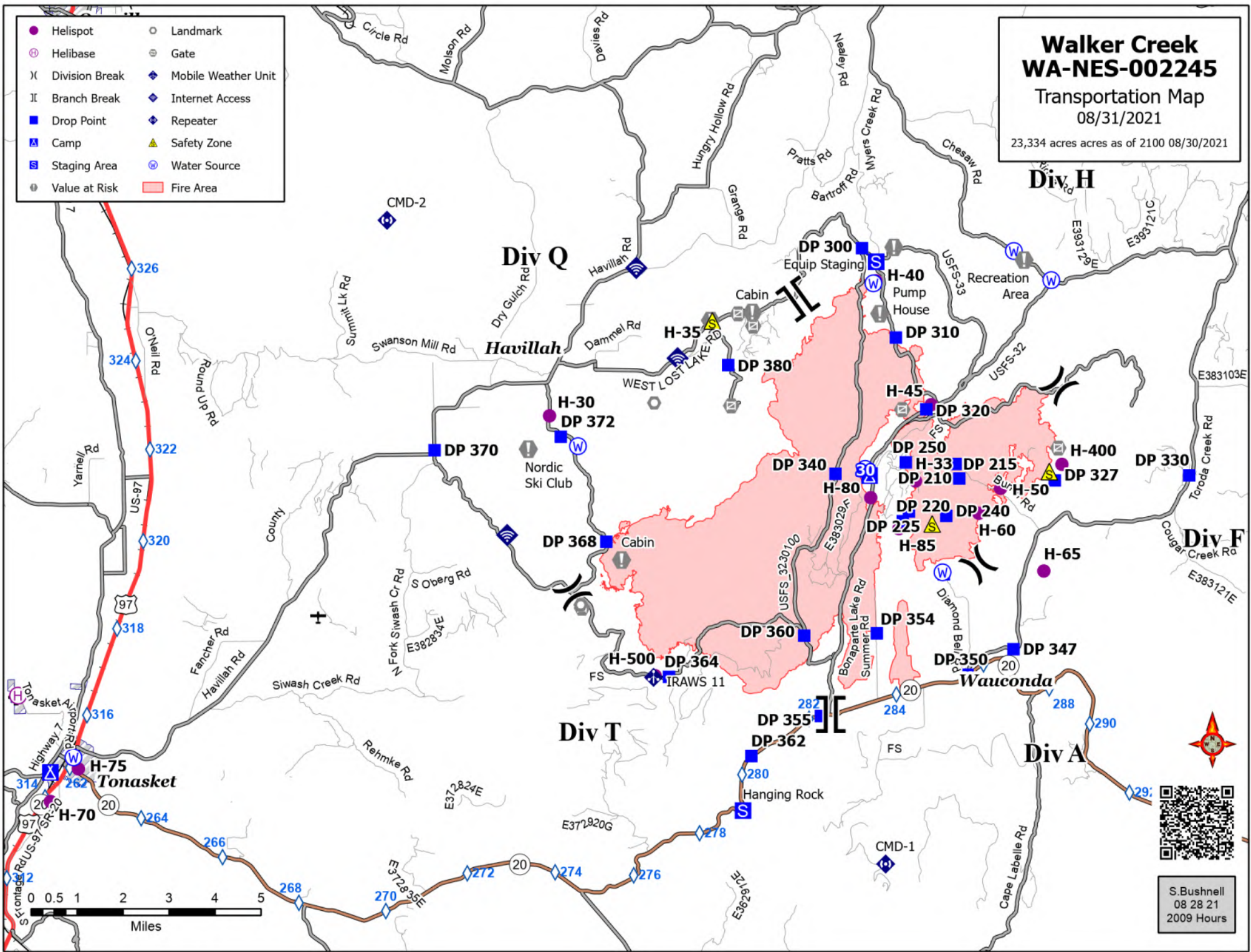
If all else fails draw your map update on your paper map, take a picture and it attach that to an email to the above addresses.

Walker Creek WA-NES-002245

Transportation Map
08/31/2021

23,334 acres as of 2100 08/30/2021

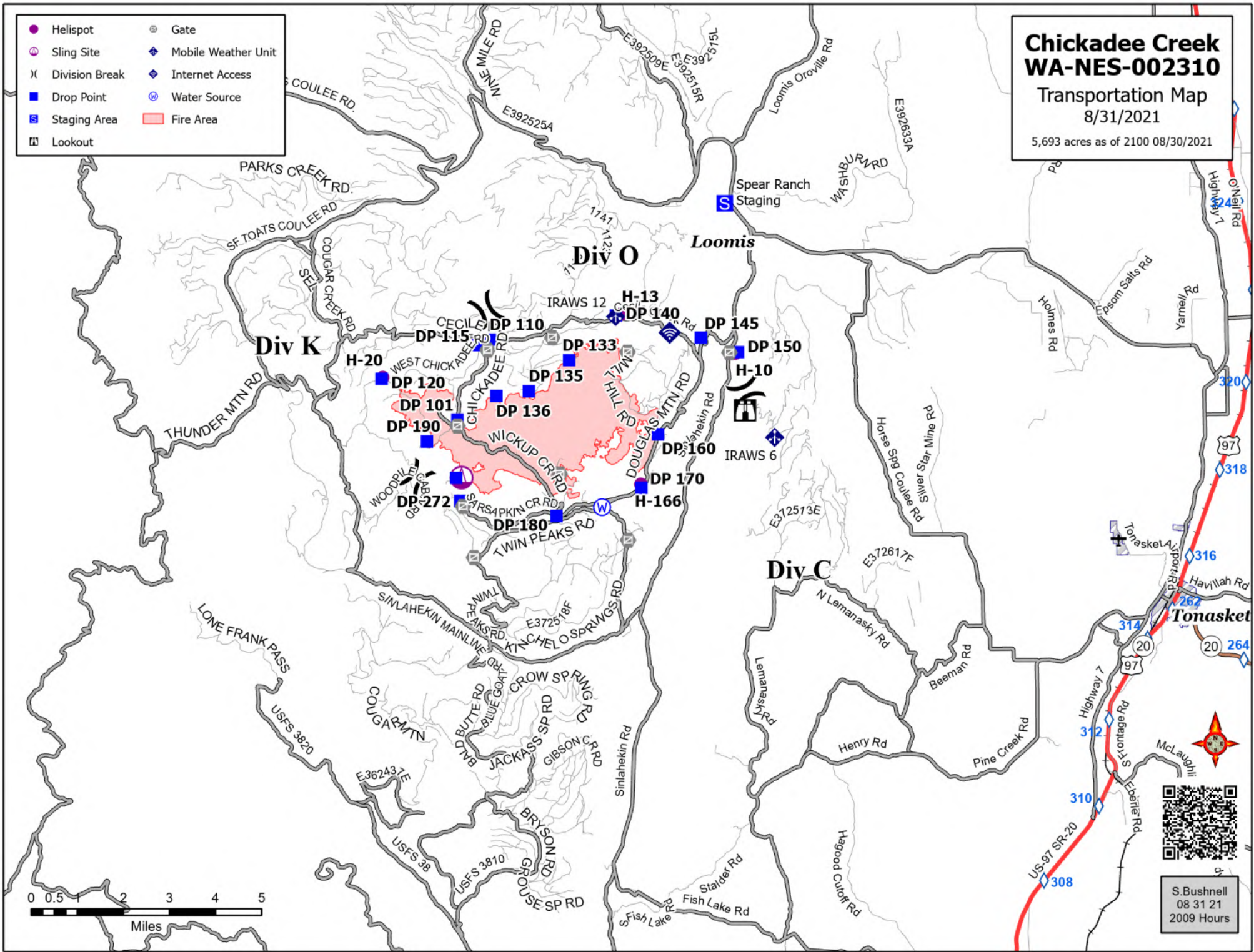
- | | |
|------------------|-----------------------|
| ● Helispot | ○ Landmark |
| ⊕ Helibase | ⊖ Gate |
| X Division Break | ◆ Mobile Weather Unit |
| Branch Break | ◆ Internet Access |
| ■ Drop Point | ◆ Repeater |
| ▲ Camp | ▲ Safety Zone |
| ■ Staging Area | ⊕ Water Source |
| ⊕ Value at Risk | ■ Fire Area |



S. Bushnell
08 28 21
2009 Hours

- Helispot
- ⊗ Sling Site
- X Division Break
- Drop Point
- S Staging Area
- ⏏ Lookout
- Gate
- ◆ Mobile Weather Unit
- ◆ Internet Access
- W Water Source
- Fire Area

**Chickadee Creek
WA-NES-002310**
Transportation Map
8/31/2021
5,693 acres as of 2100 08/30/2021





EMERGENCY PLAN INCIDENT WITHIN AN INCIDENT

ON SCENE INCIDENT COMMANDER

In the event of an accident or medical incident of any size, your primary responsibility is to ENSURE that the victim(s) receive prompt and effective Triage, Treatment, Extrication and Transport.

- **ENSURE THE MEDICAL INCIDENT REPORT IN THE INCIDENT ACTION PLAN IS BEING USED AND FOLLOWED- *IF DETERMINED TO BE A GREEN, DO NOT DECLARE EMERGENCY TRAFFIC AND ONLY COMPLETE LINE 1-4 ON MIR*.**
- Conduct size-up of the incident nature of accident, number type of resources involved, latitude and longitude location (DD°MMM.MM format): notify incident communications center and supervisor, request assistance as needed.
- Order and coordinate medical and support response to the accident.
- Evaluate special needs (law enforcement, haz mat, etc.).
- Clear the command frequency if medical emergency, coordinate with incident communications and air attack for air medical transportation needs.
- Preserve and photograph the scene for accident investigation.
- Remain aware of surroundings and the status of the main incident (delegate personnel to monitor the main fire) to ensure safety of medical treatment personnel.
- Until relieved, supervise and manage all personnel involved at the incident scene.

MEDICAL PLAN (ICS 206 WF)

20 Incident/Project Name			1. Operational Period				
Walker Creek Fire			September 7th, 2021 0600-1800				
2. Ambulance Services							
Name	Complete Address	Phone	Advanced Life Support (ALS) Yes No				
Lifeline Ambulance	912 Koala Ave Omak, WA 98841	911 - Dispatch 509-663-8091	X				
3. Air Ambulance Services							
Name	Phone	Type of Aircraft & Capability					
Life Flight Network	800-232-0911	Bell 407 - Brewster					
Airlift Northwest	800-426-2430 or 911	Rotor in Wenatchee					
4. Hospitals							
Name Complete Address	Coordinate Standard Degrees Decimal Minutes DD° MM.MMM' N - Lat DD° MM.MMM' W - Long	Travel Time From Bonaparte	Air	Gnd	Phone	Helipad Yes No	Level of Care Facility
North Valley Hospital 203 S Western Ave Tonasket, WA 98855	Lat: 48°42.4549' N	13 min	38 min	509-486-2151		X	Level 4 Trauma
	Long: 119°26.3267' W						
Mid-Valley Hospital 912 Koala Ave Omak, WA 98841	Lat: 48°23.8336' N	24 Min	59 min	509-826-1760	X		Level 4 Trauma
	Long: 119°32.8758' W						
Confluence Health Hospital (Central Washington Hospital) 1201 S Miller St. Wenatchee, WA 98801	Lat: 47°24.4340' N	1 Hr 12 min	2 Hr 48 min	509-662-1511	X		Level 2 Trauma
	Long: 120°19.3664' W						
Harborview Medical 325 9th Ave Seattle, WA 98104	Lat: 47°36.1897' N	2 Hr 22 min	5 Hr	541-222-6929	X		Level 1 Trauma Burn Center
	Long: 122°19.4759' W						
5. Division Branch Group	Capability	Personnel					
Div A/F	AMR Ambulance (Ambo 3) Gates						
Div H	Unstaffed						
Div Q	Unstaffed						
Div T	Unstaffed						
6. Prepared By (Medical Unit Leader)		7. Date/Time	8. Reviewed By (Safety Officer)		9. Date/Time		
Lee Venning (T), Eamonn Ryan <i>Lee Venning</i>		09/6/2021 1800	Troy Corn <i>Troy Corn</i>		09/6/2021 1800		

MEDICAL PLAN (ICS 206 WF)

20 Incident/Project Name		1. Operational Period							
Chickadee Creek Fire		September 7th, 2021 0600-1800							
2. Ambulance Services									
Name	Complete Address			Phone		Advanced Life Support (ALS) Yes No			
Lifeline Ambulance	912 Koala Ave Omak, WA 98841			911 - Dispatch 509-663-8091		X			
3. Air Ambulance Services									
Name		Phone		Type of Aircraft & Capability					
Life Flight Network		800-232-0911		Bell 407 - Brewster					
Airlift Northwest		800-426-2430 or 911		Rotor in Wenatchee					
4. Hospitals									
Name Complete Address		Coordinate Standard Degrees Decimal Minutes DD° MM.MMM' N - Lat DD° MM.MMM' W - Long		Travel Time From Loomis Air Gnd		Phone	Helipad Yes No	Level of Care Facility	
North Valley Hospital 203 S Western Ave Tonasket, WA 98855		Lat:	48°42.4549' N		8 min	22 min	509-486-2151	X	Level 4 Trauma
		Long:	119°26.3267' W						
Mid-Valley Hospital 912 Koala Ave Omak, WA 98841		Lat:	48°23.8336' N		20 Min	46 min	509-826-1760	X	Level 4 Trauma
		Long:	119°32.8758' W						
Confluence Health Hospital (Central Washington Hospital) 1201 S Miller St. Wenatchee, WA 98801		Lat:	47°24.4340' N		68 min	2 Hr 35 min	509-662-1511	X	Level 2 Trauma
		Long:	120°19.3664' W						
Harborview Medical 325 9 th Ave Seattle, WA 98104		Lat:	47°36.1897' N		1Hr 38 min	4 Hr 50 min	541-222-6929	X	Level 1 Trauma Burn Center
		Long:	122°19.4759' W						
5. Division Branch Group		Capability			Personnel				
Div C		Pend Oreille Ambulance (Ambo 2) Sylvester							
Div K/O		Kyle Meade EMPF							
6. Prepared By (Medical Unit Leader)				7. Date/Time		8. Reviewed By (Safety Officer)		9. Date/Time	
Lee Venning (T), Eamonn Ryan <i>Lee Venning</i>				09/6/2021 1800		Troy Corn <i>Troy Corn</i>		09/6/2021 1800	

MEDICAL PLAN (ICS 206 WF)

Controlled Unclassified Information//Basic

Medical Incident Report

FOR A NON-EMERGENCY INCIDENT, WORK THROUGH CHAIN OF COMMAND TO REPORT AND TRANSPORT INJURED PERSONNEL AS NECESSARY.

FOR A MEDICAL EMERGENCY: IDENTIFY ON SCENE INCIDENT COMMANDER BY NAME AND POSITION AND ANNOUNCE "MEDICAL EMERGENCY" TO INITIATE RESPONSE FROM IMT COMMUNICATIONS/DISPATCH.

Use the following items to communicate situation to communications/dispatch.

1. CONTACT COMMUNICATIONS / DISPATCH (**Verify correct frequency prior to starting report**)

Ex: "Communications, Div. Alpha. Stand-by for Emergency Traffic."

2. INCIDENT STATUS: *Provide incident summary (including number of patients) and command structure.*

Ex: "Communications, I have a Red priority patient, unconscious, struck by a falling tree. Requesting air ambulance to Forest Road 1 at (Lat./Long.) This will be the Trout Meadow Medical, IC is TFLD Jones. EMT Smith is providing medical care."

Severity of Emergency / Transport Priority	<input type="checkbox"/> RED / PRIORITY 1 Life or limb threatening injury or illness. Evacuation need is IMMEDIATE <i>Ex: Unconscious, difficulty breathing, bleeding severely, 2° – 3° burns more than 4 palm sizes, heat stroke, disoriented.</i> <input type="checkbox"/> YELLOW / PRIORITY 2 Serious Injury or illness. Evacuation may be DELAYED if necessary. <i>Ex: Significant trauma, unable to walk, 2° – 3° burns not more than 1-3 palm sizes.</i> <input type="checkbox"/> GREEN / PRIORITY 3 Minor Injury or illness. Non-Emergency transport <i>Ex: Sprains, strains, minor heat-related illness.</i>	
Nature of Injury or Illness & Mechanism of Injury		<i>Brief Summary of Injury or Illness (Ex: Unconscious, Struck by Falling Tree)</i>
Transport Request		<i>Air Ambulance / Short Haul/Hoist Ground Ambulance / Other</i>
Patient Location		<i>Descriptive Location & Lat. / Long. (WGS84)</i>
Incident Name		<i>Geographic Name + "Medical" (Ex: Trout Meadow Medical)</i>
On-Scene Incident Commander		<i>Name of on-scene IC of Incident within an Incident (Ex: TFLD Jones)</i>
Patient Care		<i>Name of Care Provider (Ex: EMT Smith)</i>

3. INITIAL PATIENT ASSESSMENT: *Complete this section for each patient as applicable (start with the most severe patient)*

Patient Assessment: See IRPG page 106

Treatment:

4. TRANSPORT PLAN:

Evacuation Location (if different): *(Descriptive Location (drop point, intersection, etc.) or Lat. / Long.)* Patient's ETA to Evacuation Location:

Helispot / Extraction Site Size and Hazards:

5. ADDITIONAL RESOURCES / EQUIPMENT NEEDS:

Example: Paramedic/EMT, Crews, Immobilization Devices, AED, Oxygen, Trauma Bag, IV/Fluid(s), Splints, Rope rescue, Wheeled litter, HAZMAT, Extrication

6. COMMUNICATIONS: Identify State Air/Ground EMS Frequencies and Hospital Contacts as applicable

Function	Channel Name/Number	Receive (RX)	Tone/NAC *	Transmit (TX)	Tone/NAC *
COMMAND					
AIR-TO-GRND					
TACTICAL					

7. CONTINGENCY: **Considerations:** *If primary options fail, what actions can be implemented in conjunction with primary evacuation method? Be thinking ahead.*

8. ADDITIONAL INFORMATION: *Updates/Changes, etc.*

REMEMBER: Confirm ETA's of resources ordered. Act according to your level of training. Be Alert. Keep Calm. Think Clearly. Act Decisively.

Controlled Unclassified Information//Basic