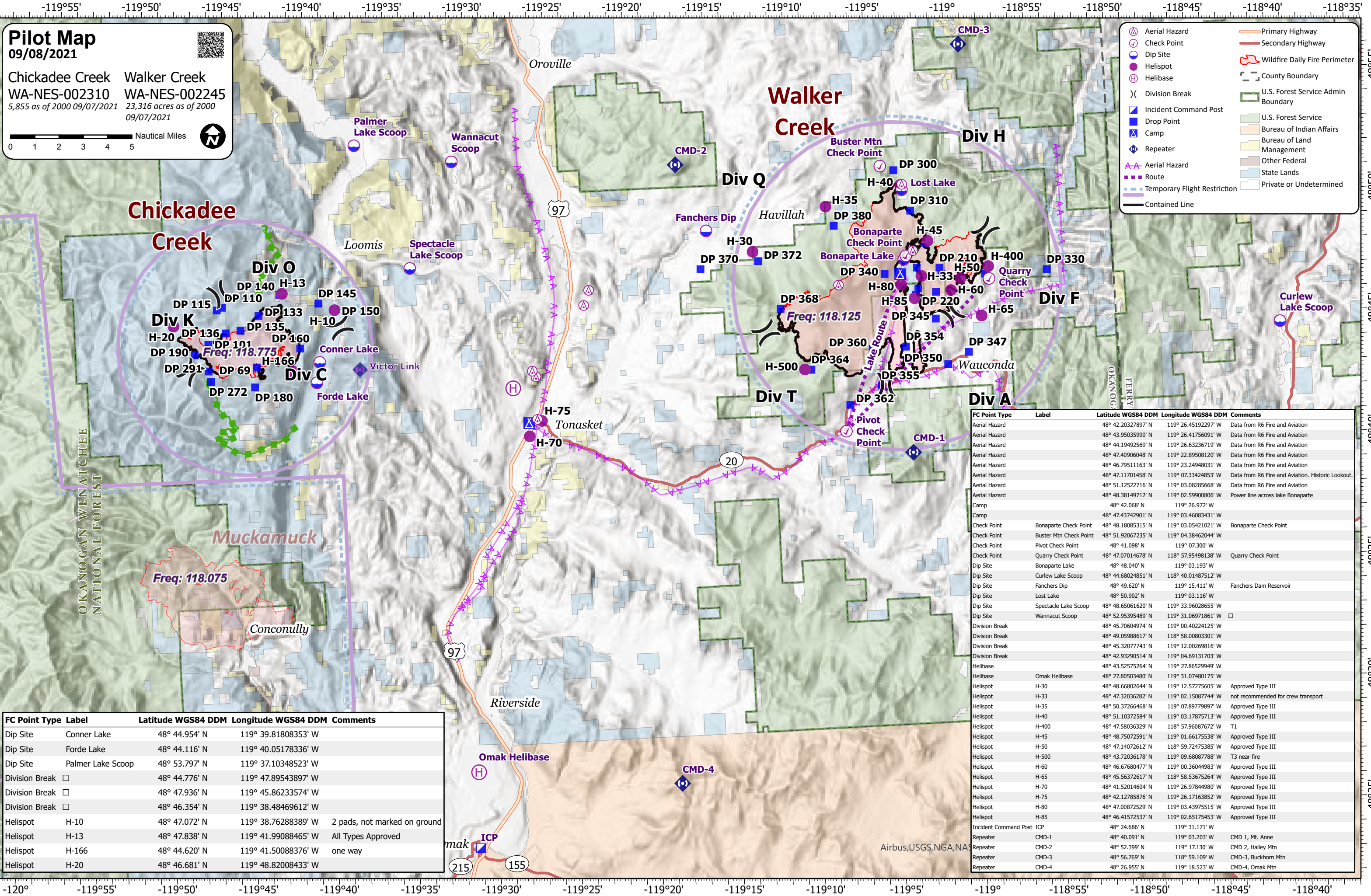
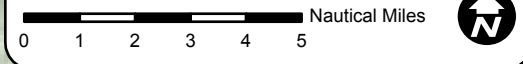


Pilot Map
09/08/2021



Chickadee Creek Walker Creek
WA-NES-002310 WA-NES-002245
5,855 acres as of 2000 09/07/2021 23,316 acres as of 2000 09/07/2021



- Aerial Hazard
- Check Point
- Dip Site
- Helispot
- Helibase
- Division Break
- Incident Command Post
- Drop Point
- Camp
- Repeater
- Aerial Hazard
- Route
- Temporary Flight Restriction
- Contained Line
- Primary Highway
- Secondary Highway
- Wildfire Daily Fire Perimeter
- County Boundary
- U.S. Forest Service Admin Boundary
- U.S. Forest Service
- Bureau of Indian Affairs
- Bureau of Land Management
- Other Federal
- State Lands
- Private or Undetermined

FC Point Type	Label	Latitude WGS84 DDM	Longitude WGS84 DDM	Comments
Dip Site	Conner Lake	48° 44.954' N	119° 39.81808353' W	
Dip Site	Forde Lake	48° 44.116' N	119° 40.05178336' W	
Dip Site	Palmer Lake Scoop	48° 53.797' N	119° 37.10348523' W	
Division Break	□	48° 44.776' N	119° 47.89543897' W	
Division Break	□	48° 47.936' N	119° 45.86233574' W	
Division Break	□	48° 46.354' N	119° 38.48469612' W	
Helispot	H-10	48° 47.072' N	119° 38.76288389' W	2 pads, not marked on ground
Helispot	H-13	48° 47.838' N	119° 41.99088465' W	All Types Approved
Helispot	H-166	48° 44.620' N	119° 41.50088376' W	one way
Helispot	H-20	48° 46.681' N	119° 48.82008433' W	

FC Point Type	Label	Latitude WGS84 DDM	Longitude WGS84 DDM	Comments
Aerial Hazard		48° 42.20327897' N	119° 26.45192297' W	Data from R6 Fire and Aviation
Aerial Hazard		48° 43.95035990' N	119° 26.41756091' W	Data from R6 Fire and Aviation
Aerial Hazard		48° 44.19492569' N	119° 26.63236719' W	Data from R6 Fire and Aviation
Aerial Hazard		48° 47.40906048' N	119° 22.89508120' W	Data from R6 Fire and Aviation
Aerial Hazard		48° 46.79511163' N	119° 23.24948031' W	Data from R6 Fire and Aviation
Aerial Hazard		48° 47.11701458' N	119° 07.33424853' W	Data from R6 Fire and Aviation. Historic Lookout.
Aerial Hazard		48° 51.12522716' N	119° 03.08285668' W	Data from R6 Fire and Aviation
Aerial Hazard		48° 48.38149712' N	119° 02.59900806' W	Power line across lake Bonaparte
Camp		48° 42.068' N	119° 26.972' W	
Camp		48° 47.43742901' N	119° 03.46083431' W	
Check Point	Bonaparte Check Point	48° 48.18085315' N	119° 03.05421021' W	Bonaparte Check Point
Check Point	Buster Mtn Check Point	48° 51.92067235' N	119° 04.38462044' W	
Check Point	Pivot Check Point	48° 41.098' N	119° 07.300' W	
Check Point	Quarry Check Point	48° 47.07014678' N	118° 57.95498138' W	Quarry Check Point
Dip Site	Bonaparte Lake	48° 48.040' N	119° 03.193' W	
Dip Site	Curlew Lake Scoop	48° 44.68024851' N	118° 40.01487512' W	
Dip Site	Fanchers Dip	48° 49.620' N	119° 15.411' W	Fanchers Dam Reservoir
Dip Site	Lost Lake	48° 50.902' N	119° 03.116' W	
Dip Site	Spectacle Lake Scoop	48° 48.65061620' N	119° 33.96028655' W	
Dip Site	Wannacut Scoop	48° 52.95395489' N	119° 31.06971861' W	□
Division Break		48° 45.70604974' N	119° 00.40224125' W	
Division Break		48° 49.05988617' N	118° 58.00803301' W	
Division Break		48° 45.32077743' N	119° 12.00269816' W	
Division Break		48° 42.93290514' N	119° 04.69131703' W	
Helibase		48° 43.52575264' N	119° 27.86529949' W	
Helibase	Omak Helibase	48° 27.80503480' N	119° 31.07480175' W	
Helispot	H-30	48° 48.66802644' N	119° 12.57275605' W	Approved Type III
Helispot	H-33	48° 47.32036282' N	119° 02.15087744' W	not recommended for crew transport
Helispot	H-35	48° 50.37266468' N	119° 07.89779897' W	Approved Type III
Helispot	H-40	48° 51.10372584' N	119° 03.17875713' W	Approved Type III
Helispot	H-400	48° 47.58036329' N	118° 57.96087672' W	T1
Helispot	H-45	48° 48.75072591' N	119° 01.66175538' W	Approved Type III
Helispot	H-45	48° 47.14072612' N	118° 59.72475385' W	Approved Type III
Helispot	H-500	48° 43.72036178' N	119° 09.68087788' W	T3 near fire
Helispot	H-60	48° 46.6780477' N	119° 00.36044983' W	Approved Type III
Helispot	H-65	48° 45.56372617' N	118° 58.53675264' W	Approved Type III
Helispot	H-70	48° 41.52014604' N	119° 26.97844980' W	Approved Type III
Helispot	H-75	48° 42.12785876' N	119° 26.17163852' W	Approved Type III
Helispot	H-80	48° 47.00872529' N	119° 03.43975515' W	Approved Type III
Helispot	H-85	48° 46.41572537' N	119° 02.65175453' W	Approved Type III
Incident Command Post	ICP	48° 24.686' N	119° 31.171' W	
Repeater	CMD-1	48° 40.091' N	119° 03.203' W	CMD 1, Mt. Anne
Repeater	CMD-2	48° 52.399' N	119° 17.130' W	CMD 2, Hailey Mtn
Repeater	CMD-3	48° 56.769' N	118° 59.109' W	CMD-3, Buckhorn Mtn
Repeater	CMD-4	48° 26.955' N	119° 18.523' W	CMD-4, Omak Mtn

airbus,USGS,NGA,NAS