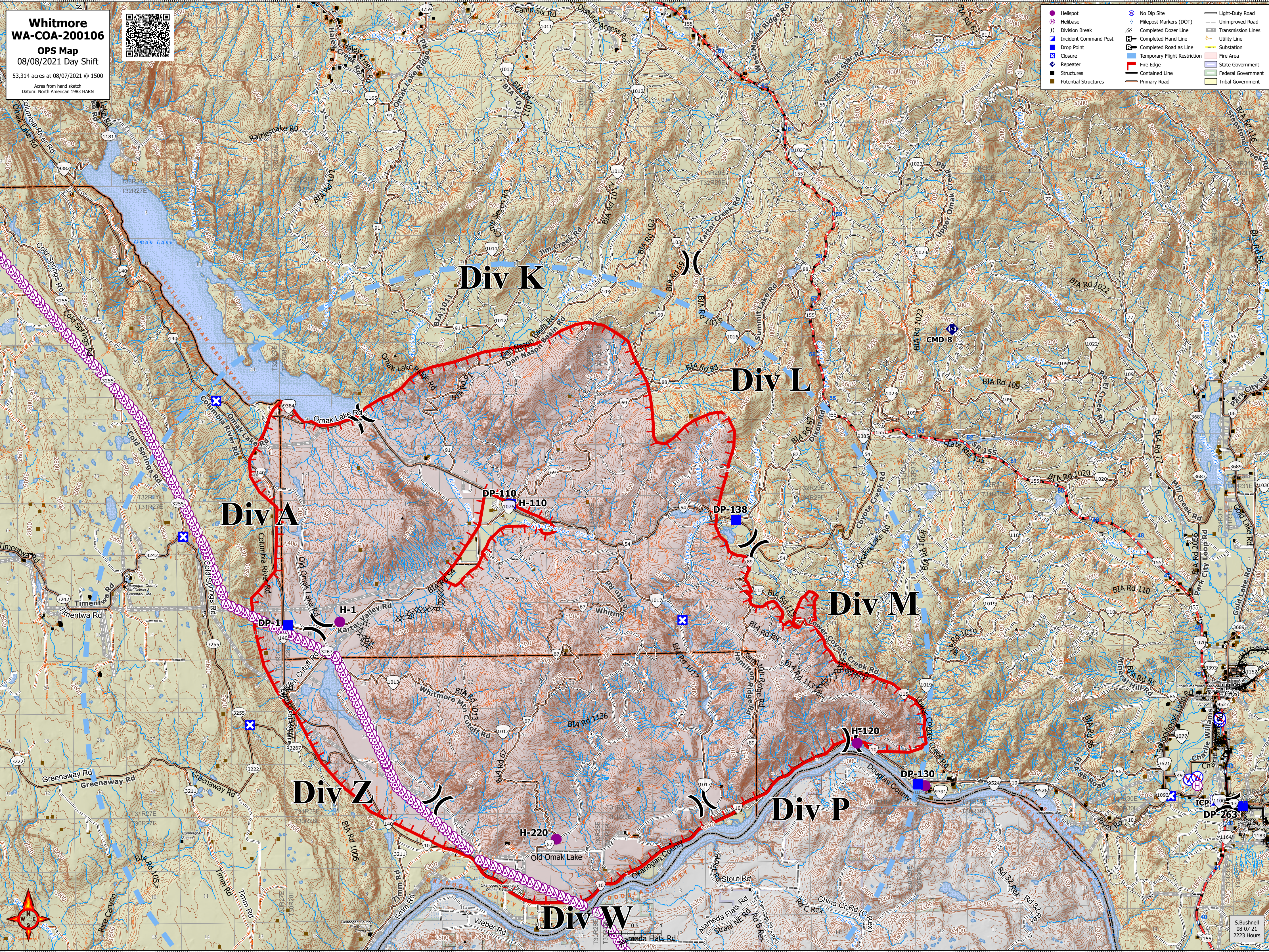


Whitmore
WA-COA-200106
OPS Map
08/08/2021 Day Shift
53,314 acres at 08/07/2021 @ 1500
Acres from hand sketch
Datum: North American 1983 HARN



- Hellspot
- Helibase
- Division Break
- Incident Command Post
- Drop Point
- Closure
- Repeater
- Structures
- Potential Structures
- No Dip Site
- Milepost Markers (DOT)
- Completed Dozer Line
- Completed Hand Line
- Completed Road as Line
- Temporary Flight Restriction
- Fire Edge
- Contained Line
- Primary Road
- Light-Duty Road
- Unimproved Road
- Transmission Lines
- Utility Line
- Substation
- Fire Area
- State Government
- Federal Government
- Tribal Government



119°28.51'W 119°27.5'W 119°26.5'W 119°25.5'W 119°24.5'W 119°23.5'W 119°22.5'W 119°21.5'W 119°20.5'W 119°19.5'W 119°18.5'W 119°17.5'W 119°16.5'W 119°15.5'W 119°14.5'W 119°13.5'W 119°12.5'W 119°11.5'W 119°10.5'W 119°9.5'W 119°8.5'W 119°7.5'W 119°6.5'W 119°5.5'W 119°4.5'W 119°3.5'W 119°2.5'W 119°1.5'W 119°0.5'W 119°W 118°59'W 118°58'W

S. Bushnell
08 07 21
2223 Hours