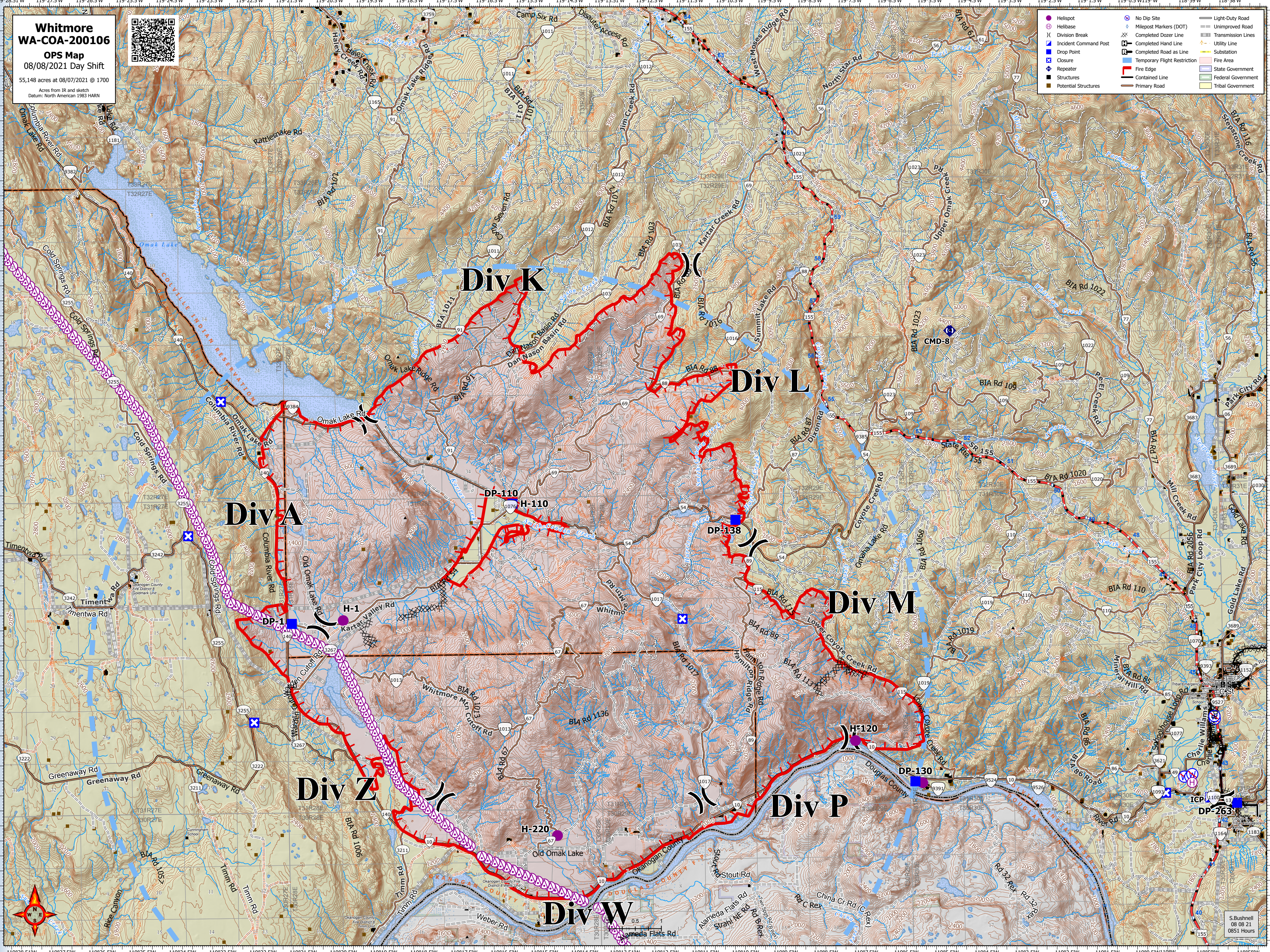


Whitmore
WA-COA-200106
OPS Map
08/08/2021 Day Shift
55,148 acres at 08/07/2021 @ 1700
Acres from IR and sketch
Datum: North American 1983 HARN



- Helispot
- Helibase
- ⌵ Division Break
- ⌵ Incident Command Post
- ⌵ Drop Point
- ⌵ Closure
- ⌵ Repeater
- Structures
- Potential Structures
- No Dip Site
- ⌵ Milepost Markers (DOT)
- ⌵ Completed Dozer Line
- ⌵ Completed Hand Line
- ⌵ Completed Road as Line
- ⌵ Temporary Flight Restriction
- ⌵ Fire Edge
- ⌵ Contained Line
- ⌵ Primary Road
- Light-Duty Road
- Unimproved Road
- Transmission Lines
- Utility Line
- Substation
- Fire Area
- State Government
- Federal Government
- Tribal Government



S. Bushnell
08/08/21
0851 Hours