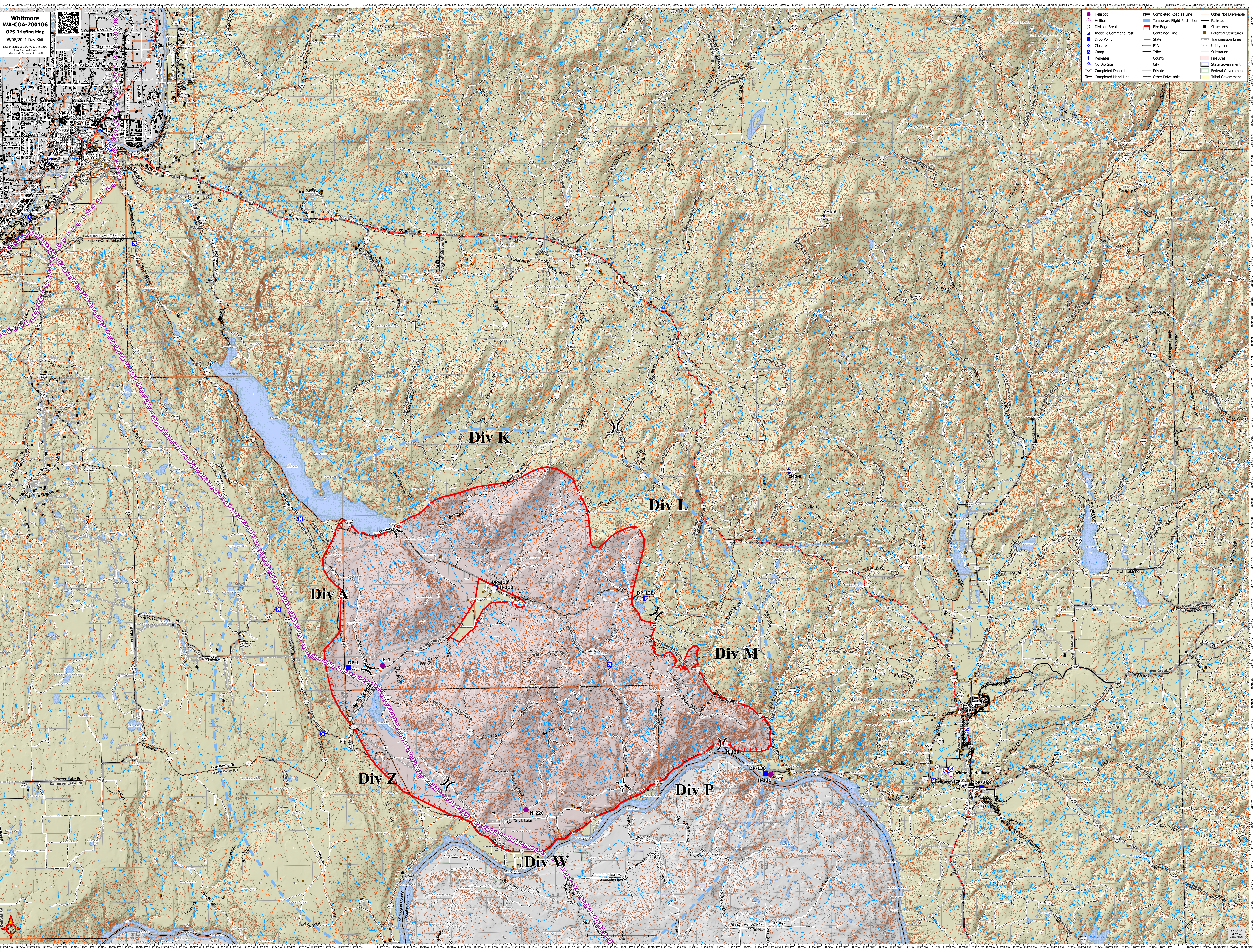
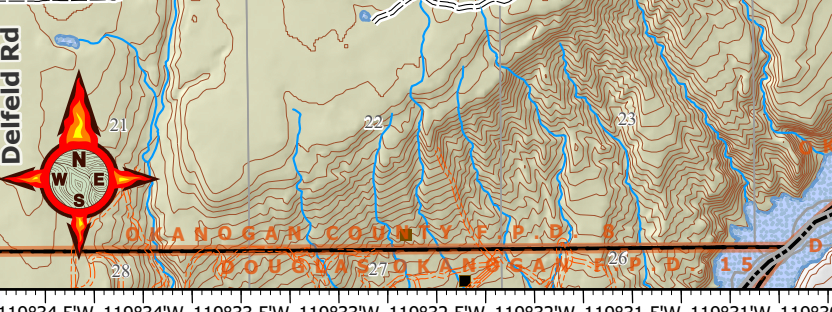


Whitmore  
WA-COA-200106  
OPS Briefing Map  
08/08/2021 Day Shift  
53.34 acres as of 08/07/2021 © 1500  
Created by: [unreadable]  
Scale: North Arrow 1:50,000

- Hotspot
- Helibase
- Division Break
- Incident Command Post
- Drop Point
- Camp
- Repeater
- No Rig Site
- Completed Dazer Line
- Completed Hand Line
- Completed Road as Line
- Temporary Flight Restriction
- Fire Edge
- Contained Line
- BIA
- Tribe
- County
- City
- Private
- Other Driveable
- Railroad
- Structures
- Potential Structures
- Transmission Lines
- Utility Line
- Substation
- Fire Area
- State Government
- Federal Government
- Tribal Government
- Other Not Driveable



Div A

Div K

Div L

Div M

Div P

Div Z

Div W

DP-110  
H-110

DP-138  
H-138

DP-130  
H-121

DP-1  
H-1

DP-220  
H-220

DP-263  
H-263

CMD-8

CMD-8

ICM

Whitmore Helibase