

# Whitmore WA-COA-200106

Pilot Map

08/08/2021 Day Shift  
53,314 acres at 08/07/2021 @ 1500

Datum: North American 1983 HARN



Declination 14.5° E

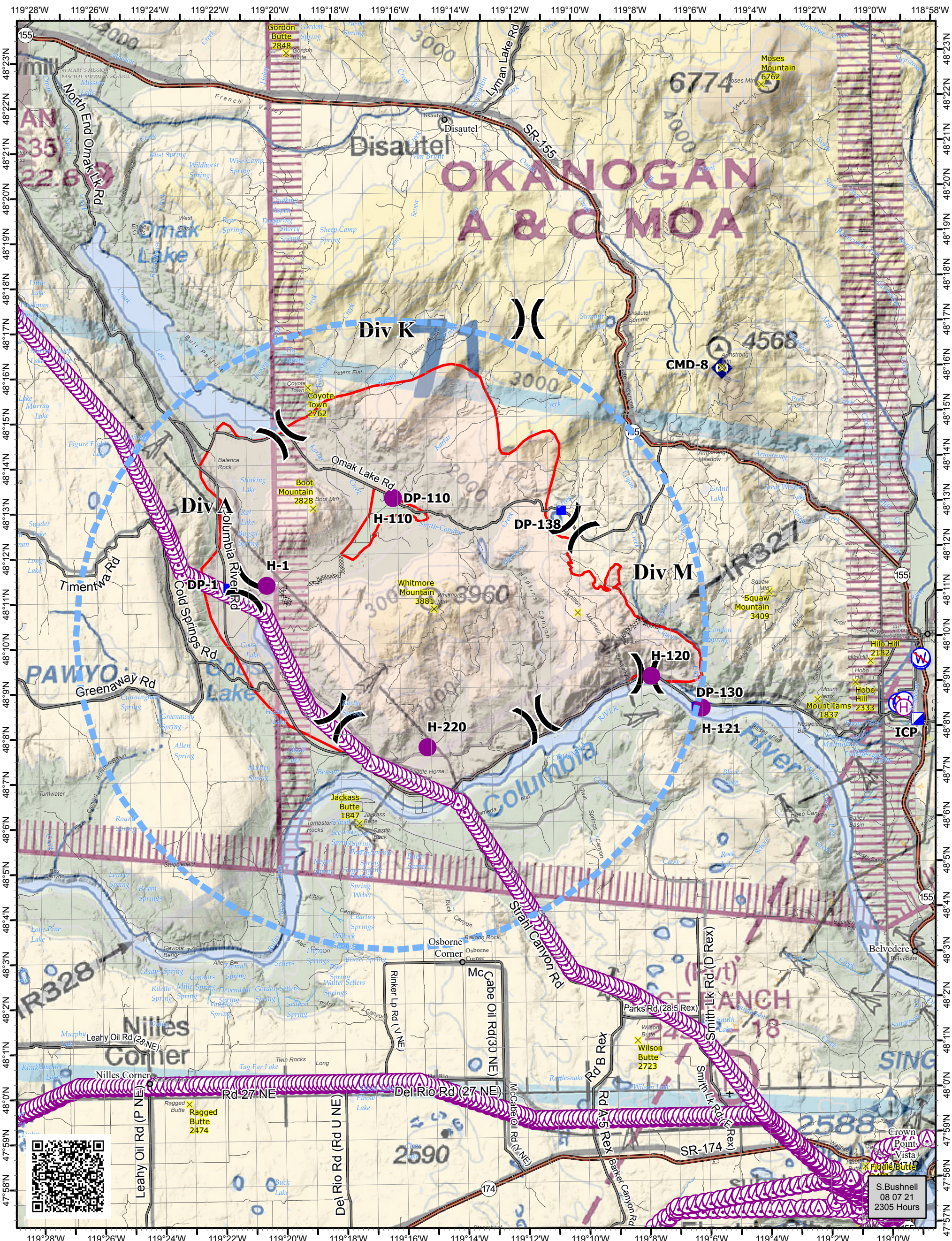
0 0.250.5 1 1.5 2 2.5 3

US Nautical Miles

1 inch equals 2 nautical miles

- ▬ TFR 1/1705 (6,500 MSL)
- Helispot
- H Helibase
- ) Division Break
- ▬ Incident Command Post
- Drop Point
- ◆ Repeater
- W No Dip Site
- Utility
- - - Utility Line
- Substation
- Fire Area

Category	Label	Latitude WGS84 DDM	Longitude WGS84 DDM
Division Break		48° 11.264' N	119° 20.924' W
Division Break		48° 14.692' N	119° 19.820' W
Division Break		48° 08.277' N	119° 11.515' W
Division Break		48° 08.383' N	119° 18.034' W
Division Break		48° 17.178' N	119° 11.570' W
Division Break		48° 09.263' N	119° 07.804' W
Division Break		48° 12.525' N	119° 10.146' W
Helibase	Whitmore Helibase	48° 08.406' N	118° 59.313' W
Helispot	H-1	48° 11.343' N	119° 20.385' W
Helispot	H-110	48° 13.249' N	119° 16.147' W
Helispot	H-120	48° 09.207' N	119° 07.676' W
Helispot	H-121	48° 08.486' N	119° 06.019' W
Helispot	H-220	48° 07.707' N	119° 15.131' W
Incident Command Post	ICP	48° 08.153' N	118° 58.867' W
Repeater	CMD-8	48° 16.012' N	119° 05.149' W



S. Bushnell  
08 07 21  
2305 Hours