

Whitmore

WA-COA-200106

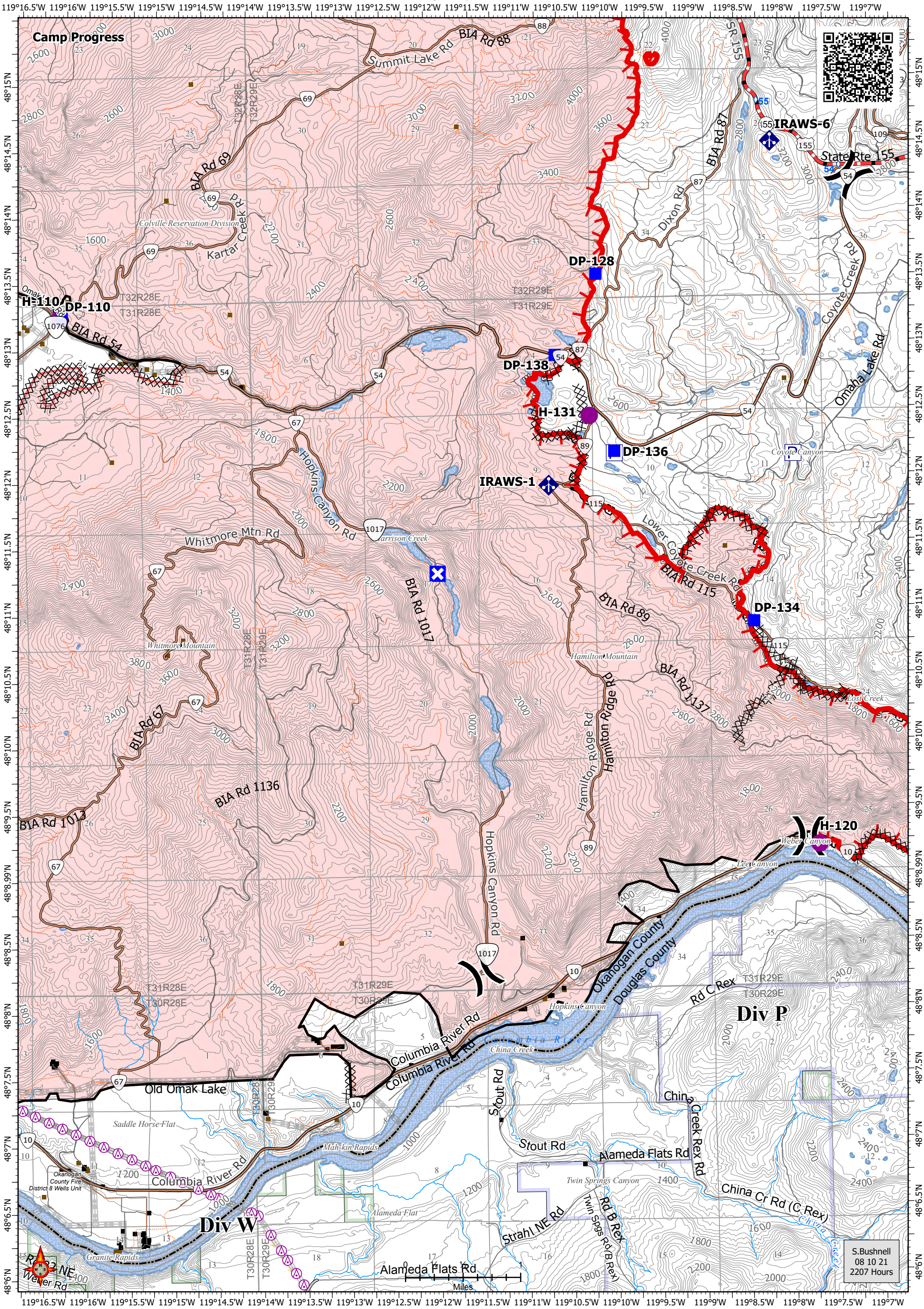
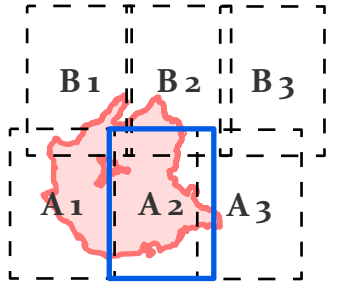
IAP Map Page: A2

08/11/2021 Day Shift

57,258 acres at 08/10/2021 @ 2100

Acres from IR and sketch
Datum: North American 1983 HARN

- Pump
- Helispot
- Division Break
- Drop Point
- Closure
- Mobile Weather Unit
- Structures
- Possible Structures
- Completed Dozer Line
- Completed Hand Line
- Completed Mixed Construction Line
- Completed Road as Line
- Fire Edge
- Contained Line
- Primary Road
- Light-Duty Road
- Unimproved Road
- Transmission Lines
- Utility Line
- Fire Area
- State Government
- Federal Government
- Tribal Government



S. Bushnell
08 10 21
2207 Hours