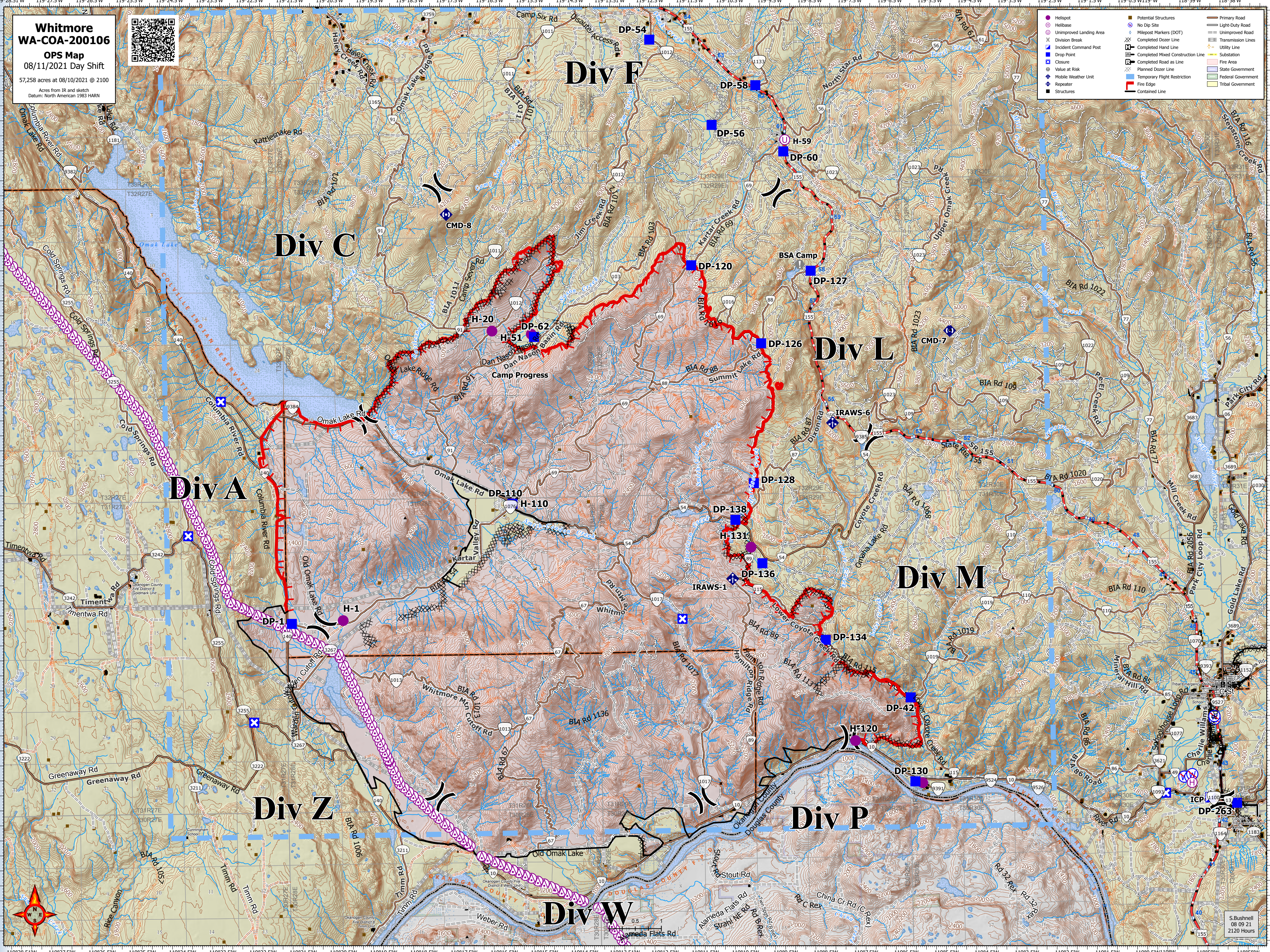


Whitmore
WA-COA-200106
OPS Map
08/11/2021 Day Shift
57,258 acres at 08/10/2021 @ 2100
Acres from IR and sketch
Datum: North American 1983 HARN



- Helipost
- Helibase
- Unimproved Landing Area
- ⌵ Division Break
- ⌵ Incident Command Post
- ⌵ Drop Point
- ⌵ Closure
- ⌵ Value at Risk
- ⌵ Mobile Weather Unit
- ⌵ Repeater
- ⌵ Structures
- Potential Structures
- No Dip Site
- Milepost Markers (DOT)
- ⌵ Completed Dozer Line
- ⌵ Completed Hand Line
- ⌵ Completed Mixed Construction Line
- ⌵ Completed Road as Line
- ⌵ Planned Dozer Line
- ⌵ Temporary Flight Restriction
- ⌵ Contained Line
- Primary Road
- Light-Duty Road
- Unimproved Road
- Transmission Lines
- Utility Line
- Substation
- Fire Area
- State Government
- Federal Government
- Tribal Government



S. Bushnell
08 09 21
2120 Hours