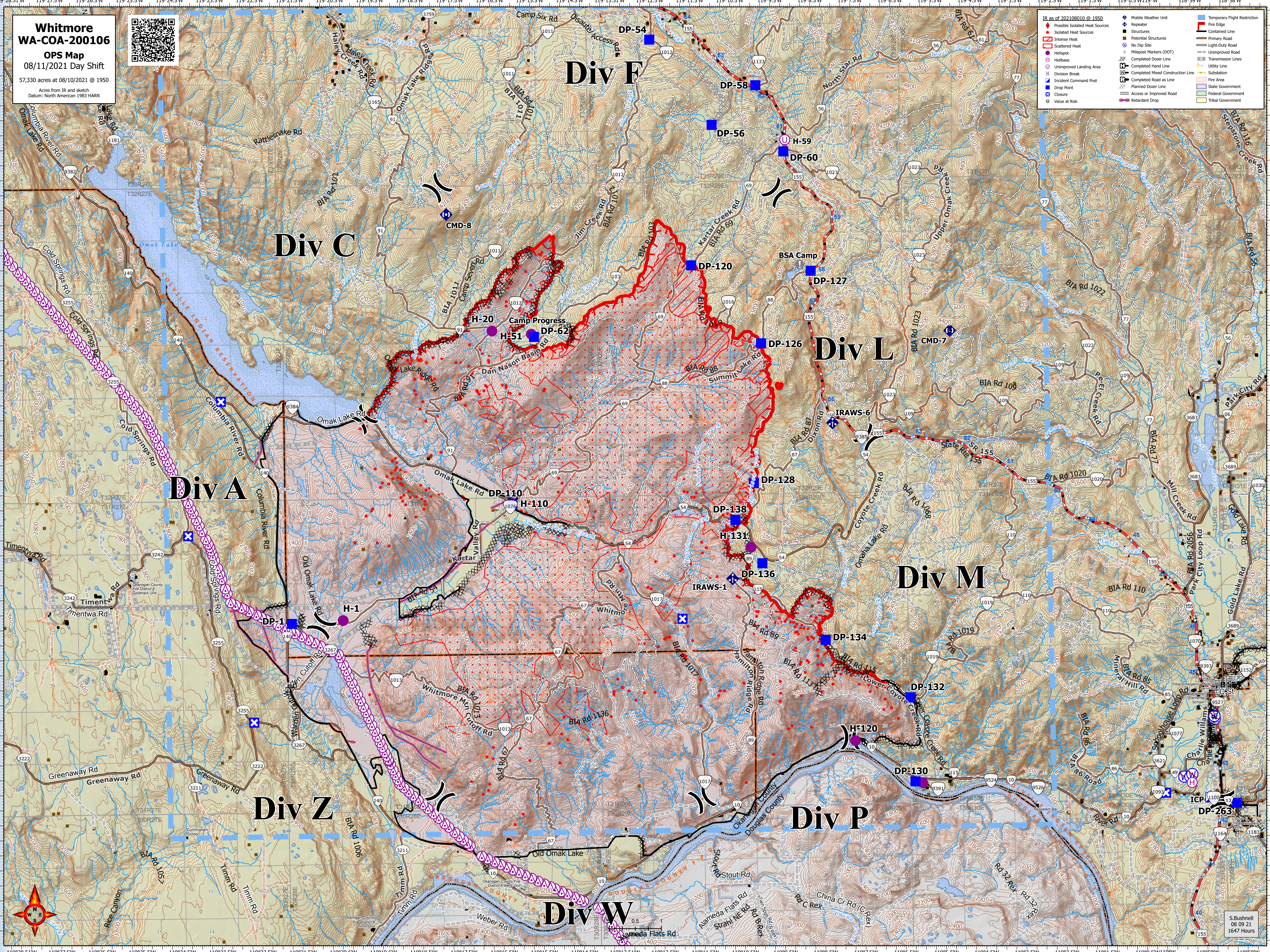


**Whitmore
WA-COA-200106**
OPS Map
08/11/2021 Day Shift
57,330 acres at 08/10/2021 @ 1950
Acres from IR and sketch
Datum: North American 1983 HARN



- IR as of 20210810 @ 1950
- ◆ Possible Isolated Heat Sources
 - ◆ Isolated Heat Sources
 - ◆ Intense Heat
 - ◆ Scattered Heat
 - ◆ Helibase
 - ◆ Unimproved Landing Area
 - ◆ Division Break
 - ◆ Incident Command Post
 - ◆ Drop Point
 - ◆ Closure
 - ◆ Value at Risk
 - ◆ Repeater
 - ◆ Structures
 - ◆ Potential Structures
 - ◆ No Dip Site
 - ◆ Milepost Markers (DOT)
 - ◆ Completed Hand Line
 - ◆ Completed Dozer Line
 - ◆ Completed Mixed Construction Line
 - ◆ Completed Road as Line
 - ◆ Planned Road as Line
 - ◆ Access or Improved Road
 - ◆ Retardant Drop
 - ◆ Temporary Flight Restriction
 - ◆ Fire Edge
 - ◆ Contained Line
 - ◆ Primary Road
 - ◆ Light-Duty Road
 - ◆ Unimproved Road
 - ◆ Transmission Lines
 - ◆ Utility Line
 - ◆ Substation
 - ◆ Fire Area
 - ◆ State Government
 - ◆ Federal Government
 - ◆ Tribal Government



S. Bushnell
08 09 21
1647 Hours