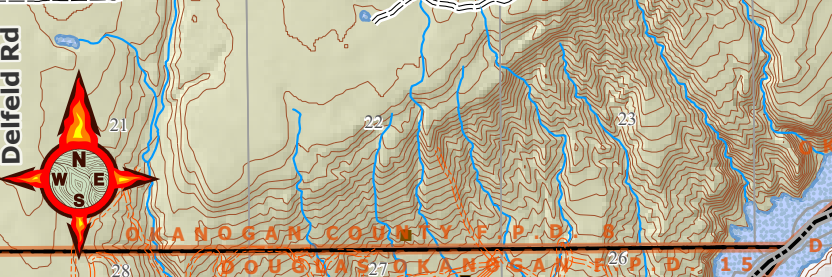
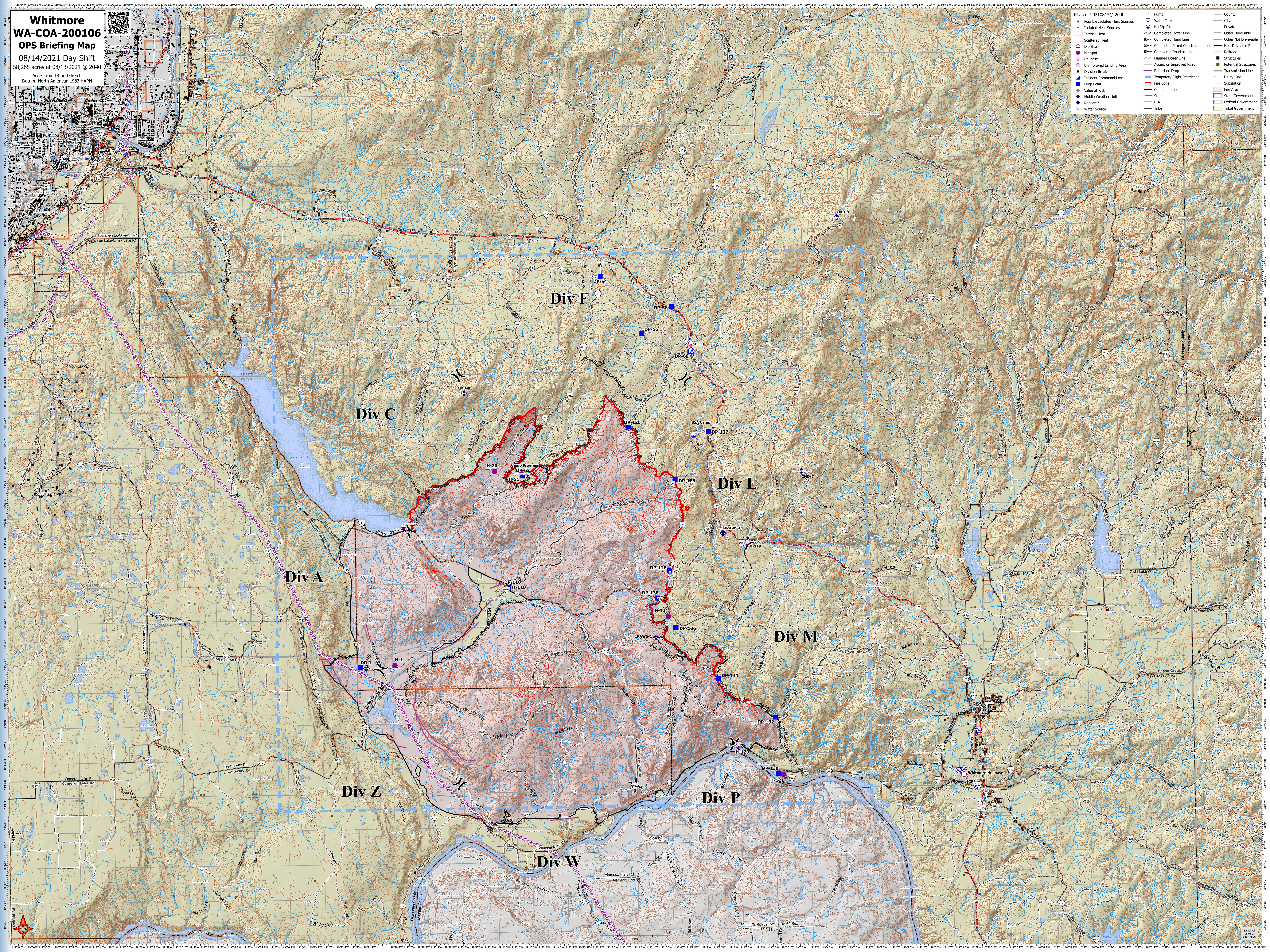


Whitmore
WA-COA-200106
OPS Briefing Map
08/14/2021 Day Shift
58,265 acres at 08/13/2021 @ 2040
Acres from IR and sketch
Datum: North American 1983 HARN

- IR as of 20210813 @ 2040
- Isolated Heat Sources
 - Scattered Heat
 - Dip Site
 - Helibase
 - Unimproved Landing Area
 - Division Break
 - Incident Command Post
 - Drop Point
 - Value at Risk
 - Mobile Weather Unit
 - Repeater
 - Water Source
 - Pump
 - Water Tank
 - No Dip Site
 - Completed Dozer Line
 - Completed Hand Line
 - Completed Mixed Construction Line
 - Completed Road as Line
 - Planned Dozer Line
 - Access or Improved Road
 - Retardant Drop
 - Temporary Flight Restriction
 - Fire Edge
 - Contained Line
 - State
 - BIA
 - Tribe
 - County
 - City
 - Private
 - Other Drive-able
 - Non-Drive-able
 - Road
 - Railroad
 - Structures
 - Potential Structures
 - Transmission Lines
 - Utility Line
 - Substation
 - Fire Area
 - State Government
 - Federal Government
 - Tribal Government



Scale: 1:50,000
Date: 08/13/21
Time: 20:40