

# Whitmore

## WA-COA-200106

### IAP Map Page: A2

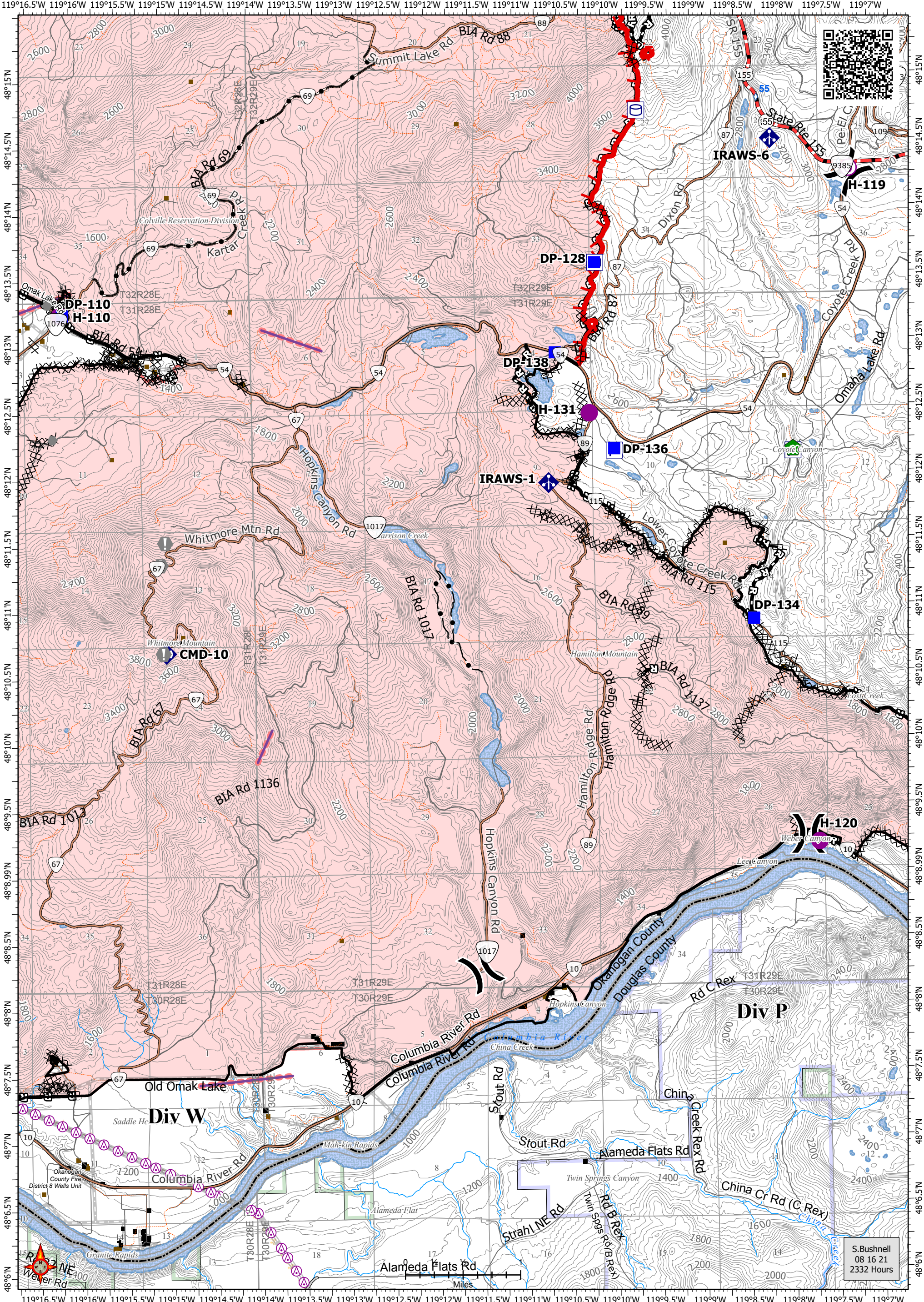
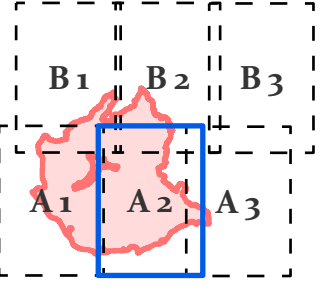
08/17/2021 Day Shift  
58,265 acres at 08/16/2021 @ 2134

Acres from IR and sketch  
Datum: North American 1983 HARN

- Pump
- Water Tank
- Helispot
- Unimproved Landing Area
- Division Break
- Drop Point
- Value at Risk
- Other

- Water Development or Draft Site
- Mobile Weather Unit
- Repeater
- Structures
- Possible Structures
- Completed Dozer Line
- Completed Hand Line
- Completed Mixed Construction Line
- Completed Road as Line
- Access or Improved Road
- Retardant Drop
- Fire Edge
- Contained Line
- Primary Road
- Light-Duty Road
- Unimproved Road

- Non-Driveable Road
- Transmission Lines
- Utility Line
- Fire Area
- State Government
- Federal Government
- Tribal Government



S. Bushnell  
08 16 21  
2332 Hours