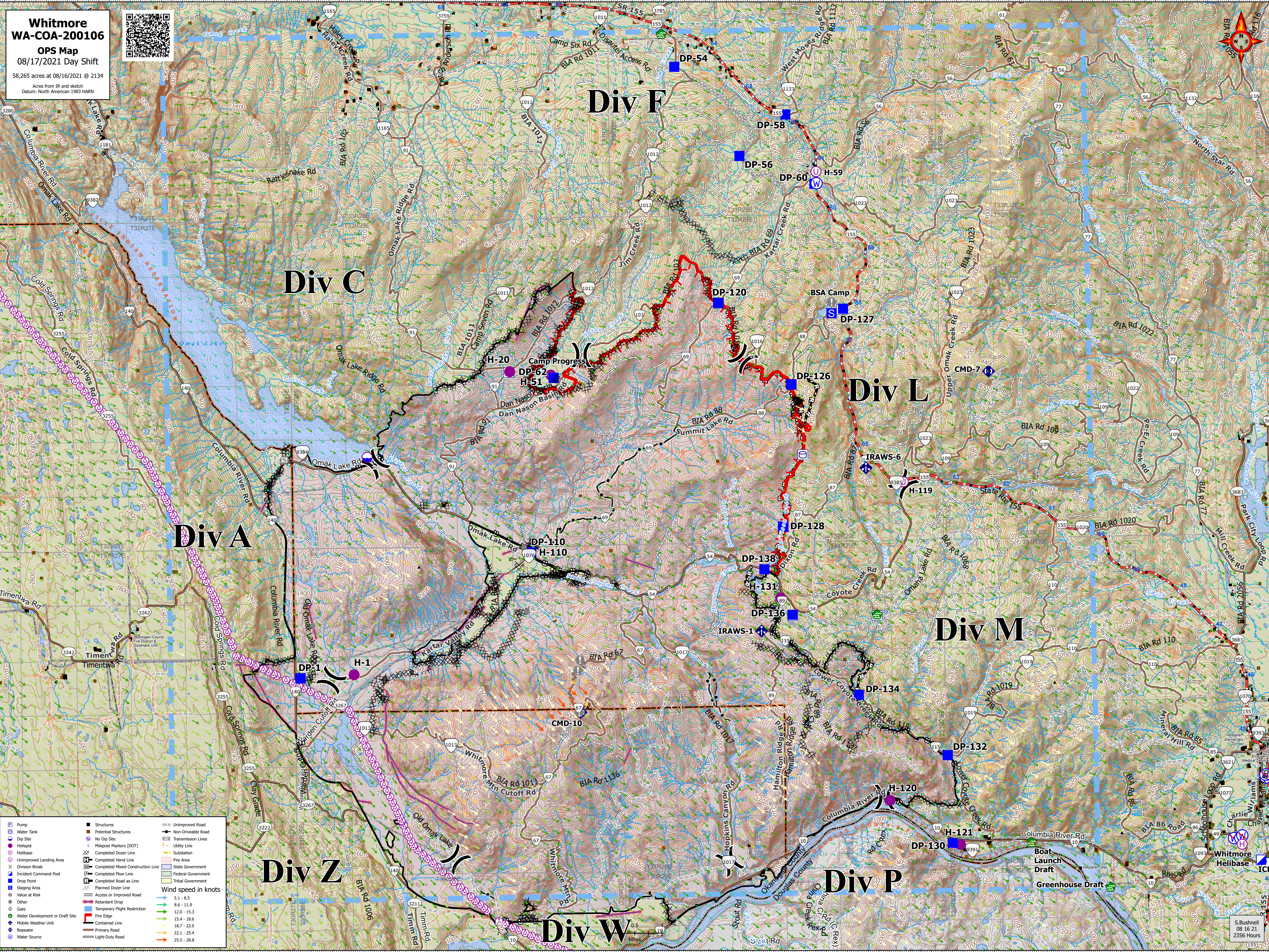


**Whitmore  
WA-COA-200106**  
**OPS Map**  
08/17/2021 Day Shift  
58,265 acres at 08/16/2021 @ 2134  
Acres from IR and sketch  
Datum: North American 1983 HARN



	Pump		Structures		Unimproved Road
	Water Tank		Potential Structures		Non-Driveable Road
	Dip Site		No Dip Site		Transmission Lines
	Heliport		Milepost Markers (DOT)		Utility Line
	Heli-base		Completed Dozer Line		Substation
	Unimproved Landing Area		Completed Hand Line		Fire Area
	Division Break		Completed Mixed Construction Line		State Government
	Incident Command Post		Completed Plow Line		Federal Government
	Drop Point		Completed Road as Line		Tribal Government
	Staging Area		Planned Dozer Line		Wind speed in knots
	Value at Risk		Access or Improved Road		Retardant Drop
	Other		Temporary Flight Restriction		Fire Edge
	Water Development or Draft Site		Mobile Weather Unit		Contained Line
	Repeater		Primary Road		Light-Duty Road
	Water Source				

S. Bushnell  
08 16 21  
2356 Hours