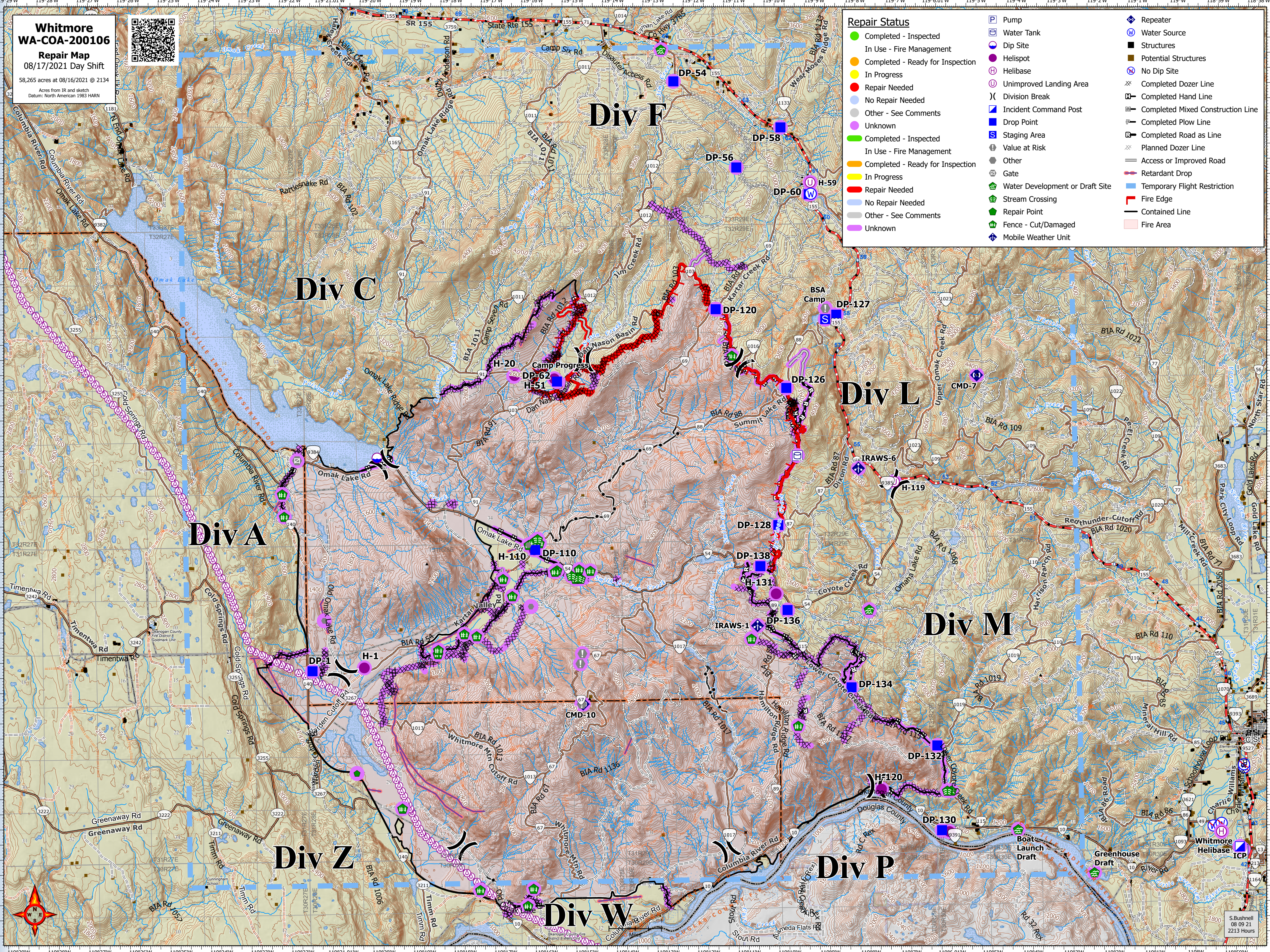


**Whitmore
WA-COA-200106**
Repair Map
08/17/2021 Day Shift
58,265 acres at 08/16/2021 @ 2134
Acres from IR and sketch
Datum: North American 1983 HARN



Repair Status	
● Completed - Inspected	● Pump
● In Use - Fire Management	● Water Tank
● Completed - Ready for Inspection	● Dip Site
● In Progress	● Helispot
● Repair Needed	● Helibase
● No Repair Needed	● Unimproved Landing Area
● Other - See Comments	● Incident Command Post
● Unknown	● Drop Point
● Completed - Inspected	● Staging Area
● In Use - Fire Management	● Value at Risk
● Completed - Ready for Inspection	● Other
● In Progress	● Gate
● Repair Needed	● Water Development or Draft Site
● No Repair Needed	● Stream Crossing
● Other - See Comments	● Repair Point
● Unknown	● Fence - Cut/Damaged
	● Mobile Weather Unit
	● Repeater
	● Water Source
	● Structures
	● Potential Structures
	● No Dip Site
	● Completed Dozer Line
	● Completed Hand Line
	● Completed Mixed Construction Line
	● Completed Plow Line
	● Completed Road as Line
	● Planned Dozer Line
	● Access or Improved Road
	● Retardant Drop
	● Temporary Flight Restriction
	● Fire Edge
	● Contained Line
	● Fire Area



S. Bushnell
08/09/21
2213 Hours