

# Whitmore

## WA-COA-200106

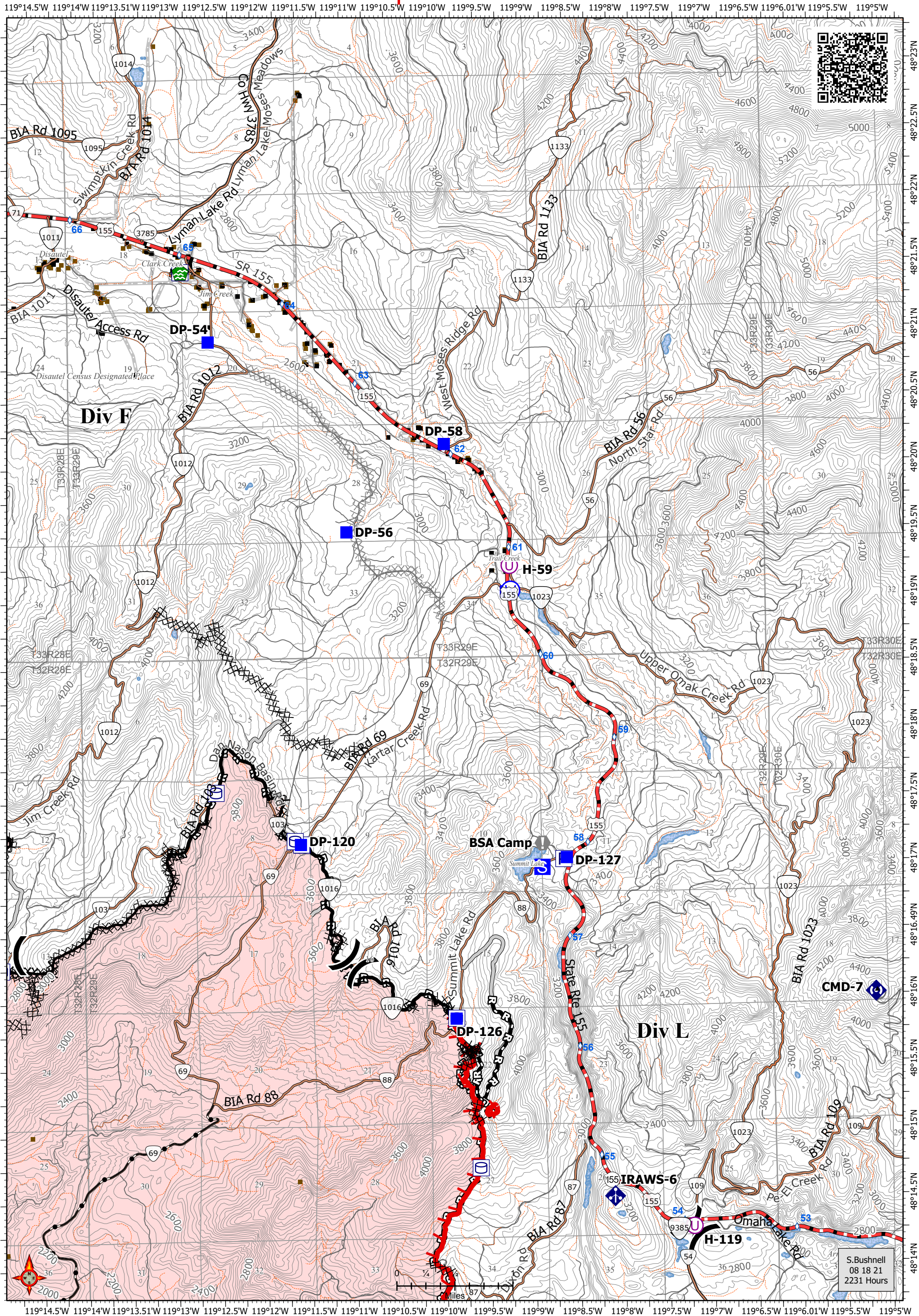
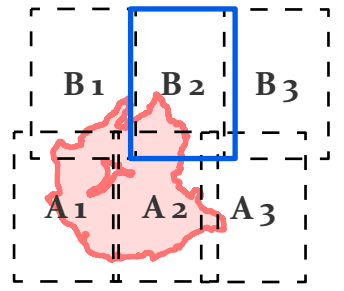
### IAP Map Page: B2

08/19/2021 Day Shift

58,280 acres at 08/18/2021 @ 1951

Acres from IR and GPS  
Datum: North American 1983 HARN

- Pump
- Water Tank
- Unimproved Landing Area
- Division Break
- Drop Point
- Staging Area
- Value at Risk
- Water Development or Draft Site
- Mobile Weather Unit
- Repeater
- Water Source
- Possible Structures
- Completed Dozer Line
- Completed Hand Line
- Completed Road as Line
- Planned Dozer Line
- Access or Improved Road
- Fire Edge
- Contained Line
- Primary Road
- Light-Duty Road
- Unimproved Road
- Non-Driveable Road
- Fire Area
- Tribal Government



S. Bushnell  
08 18 21  
2231 Hours