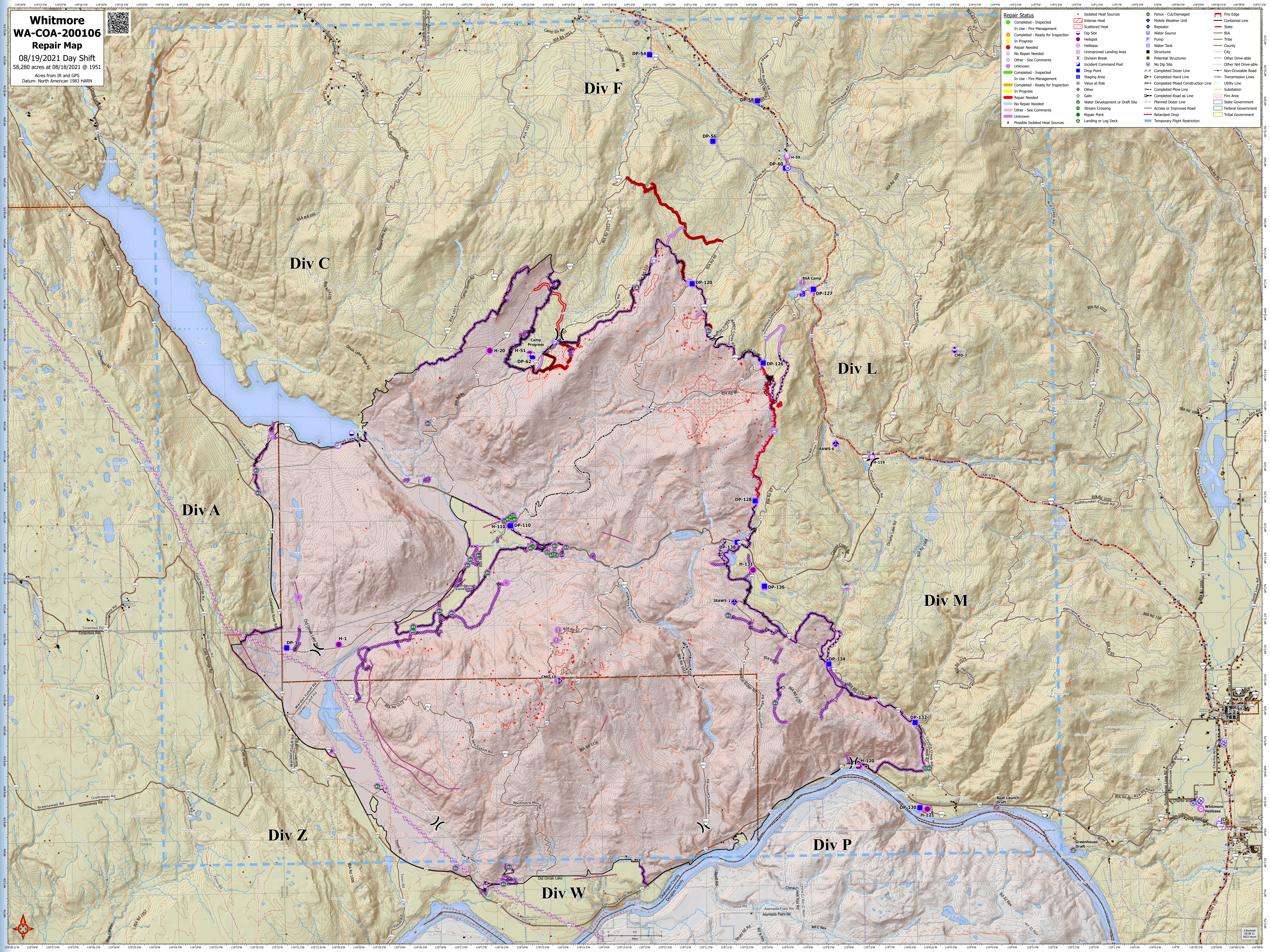


Whitmore
WA-COA-200106
Repair Map
08/19/2021 Day Shift
58,280 acres at 08/18/2021 @ 1951
Acres from IR and GPS
Datum: North American 1983 HARN



- | Repair Status | |
|------------------------------------|-------------------------------------|
| ● Completed - Inspected | ■ Isolated Heat Sources |
| ● In Use - Fire Management | ■ Intense Heat |
| ● Completed - Ready for Inspection | ■ Scattered Heat |
| ● In Progress | ● Dip Site |
| ● Repair Needed | ● Helispot |
| ● No Repair Needed | ● Helibase |
| ● Other - See Comments | ● Unimproved Landing Area |
| ● Unknown | ■ Structures |
| ● Completed - Inspected | ■ Potential Structures |
| ● In Use - Fire Management | ■ No Dip Site |
| ● Completed - Ready for Inspection | ■ Incident Command Post |
| ● In Progress | ■ Drop Point |
| ● Repair Needed | ■ Staging Area |
| ● No Repair Needed | ■ Value at Risk |
| ● Other - See Comments | ■ Completed Hand Line |
| ● Unknown | ■ Completed Mixed Construction Line |
| ● Possible Isolated Heat Sources | ■ Completed Plow Line |
| | ■ Completed Road as Line |
| | ■ Planned Dozer Line |
| | ■ Access or Improved Road |
| | ■ Retardant Drop |
| | ■ Retardant Flight Restriction |
- | Fire Status | |
|------------------------|----------------------|
| ● Fire Edge | ■ Fire Area |
| ■ Contained Line | ■ Fire Substation |
| ■ State | ■ State Government |
| ■ BIA | ■ Federal Government |
| ■ Tribe | ■ Tribal Government |
| ■ County | |
| ■ City | |
| ■ Other Drive-able | |
| ■ Other Not Drive-able | |
| ■ Non-Driveable Road | |
| ■ Transmission Lines | |
| ■ Utility Line | |
| ■ Substation | |
| ■ Fire Area | |
| ■ Fire Substation | |
| ■ State Government | |
| ■ Federal Government | |
| ■ Tribal Government | |

