

# INCIDENT ACTION PLAN

# Whitmore Fire

August 7-8, 2021

0600-0600 Operational Period

## MORNING BRIEFING @ 0600

Morning briefing will be a ZOOM call, use the information below to connect:

Phone: 1-669-254-5252

Meeting ID: 160 329 1397

Passcode: 252064



SCAN QR code to JOIN VIA ZOOM



Download  
IAP's



Scan the QR Code to fill out the check in form or type the following into your internet browser:  
<https://forms.office.com/g/agvAKcC86U>



Download  
MAPS

Whitmore - WA-COA-200106  
221-KTO / N7SD [P] 1522




This page intentionally left blank.



## INCIDENT OBJECTIVES (ICS 202)

<b>1. Incident Name:</b>	<b>2. Operational Period: DAY / NIGHT</b>	
WHITMORE	Date/Time From: 08/07/2021 0600      SAT	Date/Time To: 08/08/2021 0600      SUN
<b>3. Objective(s):</b>		
<p>Implement risk management practices for the safety of firefighters, other responders and the public as the first priority.</p> <p>Minimize impacts to private property, critical infrastructure, timber, cultural and natural resources including water, fish, wildlife, and range land.</p> <p>Maintain and strengthen community relationships and provide timely fire information to the public and cooperators.</p> <p>Establish and maintain all current COVID-19 mitigation protocols according to CDC and agency guidelines.</p>		
<b>4. Operational Period Command Emphasis:</b>		
Implement direct suppression tactics where safe to do so to minimize fire size, protect timber values and private property.		
<b>General Situational Awareness:</b>		
Monitor the weather conditions and base all actions on current and expected fire behavior.		
<b>5. Site Safety Plan Required?</b> Yes <input type="checkbox"/> No <input checked="" type="checkbox"/>		
<b>Approved Site Safety Plan(s) Located</b>		
<b>6. Incident Action Plan</b> (the items checked below are included in this Incident Action Plan):		
<input checked="" type="checkbox"/> ICS 202 <input checked="" type="checkbox"/> ICS 203 <input checked="" type="checkbox"/> ICS 204 <input checked="" type="checkbox"/> ICS 205 <input type="checkbox"/> ICS 205A <input checked="" type="checkbox"/> ICS 206	<input type="checkbox"/> ICS 207 <input type="checkbox"/> ICS 208 <input checked="" type="checkbox"/> ICS 220 <input checked="" type="checkbox"/> Map/Chart <input checked="" type="checkbox"/> Weather Forecast/Tides/Currents	<b>Other Attachments:</b> <input type="checkbox"/> _____ <input type="checkbox"/> _____ <input type="checkbox"/> _____ <input type="checkbox"/> _____
<b>7. Prepared by:</b> HOWARD JOHNSON      Position/Title:      PSC2	Signature: <i>Howard Johnson</i>	
<b>8. Approved by Incident Commander:</b>	Name:      BOBBY SHINDELAR	Signature: <i>Bobby Shindelar</i>
<b>ICS 202</b>	<b>IAP Page</b>	Date/Time:      08/06/2021 2000

## ORGANIZATION ASSIGNMENT LIST (ICS 203)

<b>1. Incident Name:</b>		<b>2. Operational Period: DAY / NIGHT</b>	
WHITMORE		Date/Time From: 08/07/2021 0600	Date/Time To: 08/08/2021 0600
		SAT	SUN
<b>3. Incident Commander(s) and Command Staff:</b>		COMMUNICATIONS UNIT	MISSY PARKER
IC/UC	BOBBY SHINDELAR	MEDICAL UNIT	EAMONN RYAN; DIANA BRAUN LEE VENNING (T)
DEPUTY		FOOD UNIT	ALEXANDER LILLA
SAFETY OFFICER	TROY CORN JACK CATES; DON WALLER (T)		
INFORMATION OFFICER	MARY BEAN ROLAND EMETAZ		
LIAISON OFFICER	SCOTT CRAWFORD		
HUMAN RESOURCE SPECIALIST	SUSIE MANEZES		
HEALTH LIAISON	LIV STECKER		
		<b>7. Operations Section:</b>	
		OPS SECTION CHIEF	MATT CASTLE KURT RANTA (T)
		PLANNING OPS	TONY ENGEL JEFF BOUSCHOR
<b>4. Agency/Organization Representative(s):</b>			
<b>Agency/Organization</b>	<b>Name</b>		
COLVILLE AGENCY	PHIL WAPATO		
DNR	PAT RYAN	DIVISION/GROUP	A/K JEROMY WILSON JAMES DICKINSON (T)
		DIVISION/GROUP	W/Z NIKIA HERNANDEZ
		DIVISION/GROUP	M/P MIKE JACKSON SAM STEINSHOUER (T)
<b>5. Planning Section:</b>		DIVISION/GROUP	NIGHT JEFF PRICHER
CHIEF	HOWARD JOHNSON JILL JOHNSON (T)	<b>7b. Air Operations Branch:</b>	
RESOURCES UNIT		AIR OPS BRANCH DIRECTOR	PAUL BALFOUR
SITUATION UNIT	DAVE WISCHER	AIR ATTACK SUPERVISOR	
DOCUMENTATION UNIT		AIR SUPPORT SUPERVISOR	TIM LYDA
DEMOBILIZATION UNIT	MIKE HESTON (VIRTUAL)	AIR TANKER COORDINATOR	
FIRE BEHAVIOR ANALYST	DON STRAND		
GIS SPECIALIST	SHAWN BUSHNELL MIKE TONKEL (T)		
TECHNOLOGY SUPPORT SPECIALIST	GEORGE JENKINS		
INCIDENT METEOROLOGIST	BOB TOBIN	<b>8. Finance/Administration Section:</b>	
		CHIEF	CHERI FULLER CHRISTINA GOEBEL (T)
		TIME UNIT	CAROL LONG
		COMPENSATION UNIT	
		COST UNIT	KATHLEEN HIGH
<b>6. Logistics Section:</b>			
CHIEF	DAN SOPTICH		
DEPUTY	KEVIN HAUGHTON		
SUPPLY UNIT	JOHN KAUPA		
FACILITIES UNIT	KAREN ZIRKLE		
GROUND SUPPORT UNIT	DAVE HARSH		
<b>9. Prepared By:</b>		<b>Position/Title:</b>	<b>Signature:</b>
Name:	JILL JOHNSON	PSC2 (T)	
ICS 203	IAP Page	Date/Time:	

**Fire Weather Forecast**

**FORECAST NO:** 3  
**PREDICTION FOR:** Saturday-Saturday night  
**Shift Date:** August 7-8, 2021 0600-0600  
**TIME AND DATE**  
**FORECAST ISSUED:** 8/6/2021 at 2000

**INCIDENT:** Whitmore Fire  
**UNIT:** Colville Reservation  
**SIGNED:** Bob Tobin  
**Incident Meteorologist (IMET)**

---

**Weather Discussion:** An upper level low pressure system will drag a cold front through the region Saturday night and Sunday. Temperatures will cool off and relative humidity will increase both Saturday and Sunday. There will be a very low chance of showers and thunderstorms Saturday, but enough to mention. The chances for showers and thunderstorms will increase on Sunday. Precipitation amounts will be light. High pressure begins to build into the region on Monday. This will bring a warming and drying trend to the region through the week

**WEATHER FORECAST:**

**Today:**

**SKY/WEATHER:** Partly cloudy...becoming mostly cloudy. A slight chance of showers in the afternoon. A slight chance of thunderstorms after 1800.

**High Temperature...**70-75 above 2500 feet and 78-84 below 2500 feet.

**24hr Change...**Down 3-5 degrees.

**Min RH.....**36-42% above 2500 feet and 30-36% below 2500 feet.

**24hr Change...**Up 5-10%

**20-FOOT WINDS:** Southwest 12-15 mph with gusts to 25 mph. Winds gusty and erratic near thunderstorms.

**CWR (>=0.10")....** 10% **LAL....**2 **Haines Index...2 (Very Low)** **Mixing Height...6800 ft AGL**

**Tonight:**

**Weather:** Cloudy. A slight chance of showers and thunderstorms through the night.

**Low Temperature...**50-60.

**Max RH.....**50-60%

**20-FOOT WINDS:** West-Northwest 10-12 mph with gust to 20 mph after 2000 mph.

**CWR (>=0.10")....**20% **LAL...2.**

**Sunday:**

**SKY/WEATHER:** Mostly cloudy. A chance of showers and thunderstorms.

**High Temperature...**65-70 above 2500 feet and 73-78 below 2500 feet.

**Min RH.....**35-40%

**20-FOOT WINDS:** Northwest-north winds 12-16 mph with gusts to 27 mph. Winds gusty and erratic near thunderstorms

**CWR (>=0.10")....**50% **LAL....2** **Haines Index...2 (Very Low)** **Mixing Height...8500 ft AGL**

**Extended Outlook**

**Monday...**Partly cloudy. Low: 58-62...High: 75-85. Min RH: 22-26% Winds: Northwest Southwest 7-10 mph.

**Tuesday...** Mostly sunny. Low: 60-65...High: 78-88. Min RH: 20-25% Winds: Northwest 8-10 mph with gusts to 20 mph.

## FIRE BEHAVIOR FORECAST

<b>FORECAST NUMBER:</b> 3	<b>TYPE OF FIRE:</b> Wildland
<b>FIRE NAME:</b> Whitmore	<b>OPERATIONAL PERIOD:</b> Aug 7-8 2021, Day-Night-Shift
<b>DATE ISSUED:</b> Aug 6, 2021	<b>TIME ISSUED:</b> 1600
<b>UNIT:</b> WA-COA	<b>Don Strand FBAN</b>

### INPUTS

**WEATHER SUMMARY:** Increasing clouds. Max temp 84, Min RH 30%. Winds- southwest 12-15 mph with gusts to 25 mph. Winds gusty and erratic near thunderstorms. LAL... 2

### OUTPUTS

#### FIRE BEHAVIOR

##### GENERAL:

- Fuels consist of grass and sage brush; scattered to heavy of timber overstory over a mix of grass, regeneration and timber litter.
- Live and dead fuel moistures very low and available to readily burn which contributes to a high resistance to control.
- Expect continued fire spread in unlined areas on both fires. Fire behavior should moderate to high, but in areas exposed to afternoon wind gusts, expect more active fire behavior with torching and spotting in spite of cooler weather. Potential exists for crown runs where there's alignment of wind and slope. Head fire rates of spread in the grass and brush fuels will approach 50 chains/hour (about 50 feet/minute) with about 7-8 feet flame lengths. With the wind gusts, expect greater rates of spread and flame lengths.
- Spotting distance will approach about 1000 ft although with periodic wind gusts to 25 mph, watch for spots up to 0.4 miles.
- Probability of Ignition will approach 70% unshaded in the afternoon and decreasing as temps decrease and humidity increases.

##### SPECIFIC:

**DIV A/K:** Expect fire to back and flank in the heavy timber with upslope runs with periods of crowning. Pay attentions to any dust devils developing in the black and moving across fire lines carrying embers in to unburned areas. In areas of fire scar regen, fire spread will be mostly continuous. Watch out torching with spotting.

**DIV M/P:** Unburned areas along the riparian bottom adjacent to Coyote Creek Road will likely flare up and be a potential source for spotting across the road into light flashy fuels. Watch for roll outs on steeper slopes establishing fire on the lower slopes contributing short upslope runs along the Columbia River Road.

**DIV W/Z:** Pay attention to fire spread across the lower slopes above the Columbia River Road and the potential for intense fire creating embers that could cause spots across the main road.

**Initial Attack:** In the event we respond to a new start, remember light flashy fuels respond quickly to changes in wind speed, slope and/or directions.

**NIGHT:** Chance of gusty and erratic winds near any thunderstorms. Expect fire remain active in the thermal belt.

**AIR OPERATIONS:** Watch for turbulence in the complex terrain. Smoke haze may impact visibility.

### SAFETY

- **Chance of gusty and erratic winds near any thunderstorms.**
- **Pay attention to dust devils developing in the black moving into the unburned potentially causing spots.**
- **Pay attention to the very dry light and flashy fuels, Fire intensity can exponentially increase and quickly change directions with increases of wind and or slope.**
- **Burnout – watch for wind directions and speed. Pay attention to smoke drift across fire lines potentially causing spots.**
- **Smoke haze or cloud over the fire may modify how active fire behavior may become. In the event there is a thicker layer of smoke, and it clears, watch for significant increase in fire activity.**

# Safety Message

7-8 August 2021

INCIDENT: Whitmore

OPERATIONAL PERIOD: 0600-0600

TOPICS:



## WORKING AROUND HEAVY EQUIPMENT

Post lookouts around equipment work areas. Establish communications with equipment boss and operator. Do not work down slope from equipment.

### RISK MANAGEMENT PROCESS



**\*\*KEEP UP ON PROPER HYDRATION BEFORE, DURING, AND AFTER SHIFT\*\***

SAFETY OFFICER: Jack Cates, Troy Corn, Don Waller (T)

# Deliberate Risk Assessment-Hazard Summary

## 7-8 August 2021

Hazard	Mitigation	Post Risk
<b>Unburned Fuels/Firing Ops</b>	Ensure management action points are implemented and followed. Weather updates as needed during burning operations. Locate indirect firelines to minimize the amount of unburned fuels. Ensure communications between all firing operations. Establish road security at all firing sites. Follow approved firing plan for unburned fuels.	Moderate
<b>Steep Terrain/Gravity</b>	Do not work crews above or below each other. Post lookouts for rolling material. Watch footing in loose soil, rock and around vegetation. Do not work below heavy equipment. Scout and identify travel routes.	Moderate
<b>Communication</b>	Evaluate for dead zones prior to engagement. Utilize human repeaters as needed. Ensure accountability of resources in problem areas. Be prepared if local traffic maximizes air time.	Moderate
<b>Aircraft</b>	Utilize Air Attack. Ensure all resources are a safe distance from all bucket and retardant drops. Utilize air to ground primary radio channel.	<b>High</b>
<b>Physical Factors</b>	Maintain hydration schedule. Closely monitor work rate and implement rest periods. Maintain nutrition. Ensure adequate work/rest.	Moderate
Environmental Factors	Assess for known allergies and report to medical personnel. Obtain Bee/wasp spray and yellow jacket traps. Maintain an awareness of livestock and rattlesnakes.	Moderate
Fire Behavior	Be aware of burn windows and weather impacts and min/max RH for flashy fuels/local conditions. Report changes to FBAN and IMET.	Moderate
Snags	Use avoidance to limit exposure time. Snag ahead to avoid exposure. Use qualified fallers, blasting, or alternate methods if needed. Conduct on-going risk analysis of all work areas. Follow Hazard Tree Safety Guidelines (IRPG page 22).	<b>High</b>
Viral Transmission Mitigations, Communicable Disease	Maintain isolated ICP (remote briefings, etc), maintain social distancing, and wear face coverings in accordance with CDC recommendations. Report and isolate if not feeling well.	Low
Extraction Time	Identify medivac sites and helispots. Initiate ground transport to accident site. Review IWI protocol to ensure familiarity.	<b>High</b>
Transportation	Signing of all incident roads that provide access to divisions. Practice defensive driving. In local communities obey the posted speed limits. Use reader boards to control entry as needed. Identify and evaluate contingency and alternate escape and travel routes.	<b>High</b>
Heavy Equipment	Post lookouts around equipment work areas. Establish communications with equipment boss and operator. Do not work down slope from equipment.	<b>High</b>
Transmission/Power Lines	Maintain one span radius from any downed line or compromised pole, be aware of smoke conductivity, report any downed lines or burning poles.	<b>High</b>
Public Interaction	Place new road closures as necessary and maintain current closures. Maintain awareness of evacuation areas and provide accurate information dissemination.	Low
Initial Attack	Ensure identified IA resources are briefed of expectations and ensure communication plan is provided. Ensure resources are briefed on IA command structure. Provide identified crews with area maps.	Moderate



**Division/Group Assignment List (ICS 204 WF)**  
**Controlled Unclassified Information//Basic**

<b>1. Incident Name:</b>			<b>3.</b>			
WHITMORE			<b>Branch:</b>		<b>Division/Group</b>	
<b>2. Operational Period: DAY / NIGHT</b>					<b>A/K</b>	
Date/Time From: 08/07/2021 0600 SAT		Date/Time To: 08/08/2021 0600 SUN				
<b>4. Operations Personnel</b>						
<b>OPERATIONS CHIEF</b>		MATT CASTLE; KURT RANTA (T) TONY ENGEL; JEFF BOUSCHOR		<b>DIVISION/GROUP SUPERVISOR</b>		JEROMY WILSON JAMES DICKINSON (T)
<b>SAFETY OFFICER</b>		TROY CORN; JACK CATES DON WALLER (T)		<b>AIR OPERATIONS BRANCH DIRECTOR</b>		PAUL BALFOUR
<b>5. Resources Assigned this Period</b>						
Strike Team / Task Force / Resource Designator		LWD	Leader	Number Persons	Drop Off PT./Time	Pick Up PT./Time
O-1.61 SOF2		08/20	JOSH NORTHRUP	1	ICP/0600	ICP/1800
O-11 TFLD		08/09	DAVE HYLTON	1	ICP/0600	ICP/1800
C-7 HC1 LA GRANDE IHC		08/20	JOSH DIACETIS	20	ICP/0600	ICP/1800
C-32 HC2 COLVILLE 1 ** (R&R - BACK 8/9)		08/22	PHILLIP MCLAUGHLIN	20	ICP/0600	ICP/1800
E-7 ENG6 OREGON WOODS, INC.		08/19	BEN COOK	3	ICP/0600	ICP/1800
E-135 ENG3 WILDFIRE SUPPORT 316 **		08/07	JOEY DEMARTINO	3	ICP/0600	ICP/1800
E-161 ENG4 AAA THUNDERBOLT **		08/07	MONTIE REYNOLDS	3	ICP/0600	ICP/1800
E-228 ENG4 WOODPECKER 5 **		08/11	JOSEPH BOIANOFF	3	ICP/0600	ICP/1800
E-17 WTS2 FYR FLY LTD #68		08/19	LINN LAMB	1	ICP/0600	ICP/1800
E-18 WTS2 PORTABLE ROCK		08/19	JIMMY POWELL	1	ICP/0600	ICP/1800
E-54 WTT2 BOULDER CREEK **		08/11	JOE SCHOENMAKERS	1	ICP/0600	ICP/1800
E-194 WTT2 OWENS **		08/12	FRANKLIN OWENS	1	ICP/0600	ICP/1800
E-196 WTT2 SUNDANCE 204 **		08/12	RODNEY FAY	1	ICP/0600	ICP/1800
E-80 DOZ2 IRON TRIANGLE **		08/08	RICK SAUL	2	ICP/0600	ICP/1800
O-62 EMPF MEDIC 1		08/20	JOHN LIPSKER	1	ICP/0600	ICP/1800
<b>8. Division/Group Communication Summary</b>						
Function	Channel	RX Frequency N/W	RX Tone/NAC	TX Frequency N/W	TX Tone/NAC	Mode
TACTICAL	1	168.0500	146.2	168.0500	146.2	A
COMMAND	9	169.7250	88.5	164.2500	100.0	A
AIR TO GROUND	14	171.8625		171.8625		A
<b>9. Prepared By (Resource Unit Leader)</b>			<b>Approved By (Planning Section Chief)</b>		<b>Date</b>	<b>Time</b>
JILL JOHNSON			HOWARD JOHNSON		08/06/2021	2000

**Division/Group Assignment List (ICS 204 WF)**  
**Controlled Unclassified Information//Basic**

<b>1. Incident Name:</b>			<b>3.</b>			
WHITMORE			<b>Branch:</b>		<b>Division/Group</b>	
<b>2. Operational Period: DAY / NIGHT</b>					<b>A/K</b>	
Date/Time From: 08/07/2021 0600 SAT		Date/Time To: 08/08/2021 0600 SUN				
<b>4. Operations Personnel</b>						
<b>OPERATIONS CHIEF</b>		MATT CASTLE; KURT RANTA (T) TONY ENGEL; JEFF BOUSCHOR		<b>DIVISION/GROUP SUPERVISOR</b>		JEROMY WILSON JAMES DICKINSON (T)
<b>SAFETY OFFICER</b>		TROY CORN; JACK CATES DON WALLER (T)		<b>AIR OPERATIONS BRANCH DIRECTOR</b>		PAUL BALFOUR
<b>5. Resources Assigned this Period</b>						
Strike Team / Task Force / Resource Designator		LWD	Leader	Number Persons	Drop Off PT./Time	Pick Up PT./Time
<b>6. Control Operations/Work Assignments:</b>						
<u>Div A</u> TASK: Secure fire south of Kartar Valley Road. Burn out as needed. PURPOSE: Protect property and resources; limit further fire spread to the north. END STATE: Fire is contained south of Kartar Valley Road and structures are not threatened.						
<u>Div K</u> TASK - Anchor and flank the fire perimeter from A/K division break, south to the K/W division break. Burn out as needed. PURPOSE - Protect property and resources north of fire perimeter. END STATE - Fire is contained south of Coyote Creek Road. Structures south of Coyote Creek Rd are not threatened.						
<b>7. Special Instructions:</b>						
** Resource is assigned to the Summit Trail fire and is on loan to Whitmore fire.						
<b>8. Division/Group Communication Summary</b>						
Function	Channel	RX Frequency N/W	RX Tone/NAC	TX Frequency N/W	TX Tone/NAC	Mode
TACTICAL	1	168.0500	146.2	168.0500	146.2	A
COMMAND	9	169.7250	88.5	164.2500	100.0	A
AIR TO GROUND	14	171.8625		171.8625		A
<b>9. Prepared By (Resource Unit Leader)</b>			<b>Approved By (Planning Section Chief)</b>		<b>Date</b>	<b>Time</b>
JILL JOHNSON			HOWARD JOHNSON		08/06/2021	2000

**Division/Group Assignment List (ICS 204 WF)**  
**Controlled Unclassified Information//Basic**

<b>1. Incident Name:</b>			<b>3.</b>			
WHITMORE			<b>Branch:</b>		<b>Division/Group</b>	
<b>2. Operational Period: DAY / NIGHT</b>					<b>M/P</b>	
Date/Time From: 08/07/2021 0600 SAT		Date/Time To: 08/08/2021 0600 SUN				
<b>4. Operations Personnel</b>						
<b>OPERATIONS CHIEF</b>		MATT CASTLE; KURT RANTA (T) TONY ENGEL; JEFF BOUSCHOR		<b>DIVISION/GROUP SUPERVISOR</b>		MIKE JACKSON SAM STEINSHOUER (T)
<b>SAFETY OFFICER</b>		TROY CORN; JACK CATES DON WALLER (T)		<b>AIR OPERATIONS BRANCH DIRECTOR</b>		PAUL BALFOUR
<b>5. Resources Assigned this Period</b>						
Strike Team / Task Force / Resource Designator		LWD	Leader	Number Persons	Drop Off PT./Time	Pick Up PT./Time
O-1.63 SOF2		08/19	JOHN BARNES	1	ICP/0600	ICP/1800
O-188 TFLD **		08/07	KEN BORCHERT	1	ICP/0600	ICP/1800
O-180 HEQB **		08/16	SCOTTY SEYMORE	1	ICP/0600	ICP/1800
O-9 FALM SWEDBERG CONTR **		08/16	JEFALD WULFF	2	ICP/0600	ICP/1800
C-50 HC2 PACIFIC COAST **		08/13	NORBERTO PANTELEON	20	ICP/0600	ICP/1800
E-136 ENG3 AZKNF 314 **		08/07	MARIO OROZCO	4	ICP/0600	ICP/1800
E-305 ENG6 MID-COLUMBIA RESOURCES LLC **		08/17	DAVID JOHNSON	3	ICP/0600	ICP/1800
E-132 ENG6 WEST METRO BR 4 **		08/08	SHANE EROSKY	3	ICP/0600	ICP/1800
E-27 WTT2 IA CONSTRUCTION & FIRE **		08/13	TERRY BURR	1	ICP/0600	ICP/1800
E-79 DOZ2 COUGAR RIDGE **		08/24	DAVE OAKES	2	ICP/0600	ICP/1800
E-1 DOZ3 TUNK CREEK LLC **		08/13	DARREL GREEN	2	ICP/0600	ICP/1800
O-62 EMPF MEDIC 1		08/20	JOHN LIPSKER	1	ICP/0600	ICP/1800
<b>6. Control Operations/Work Assignments:</b>						
<b>8. Division/Group Communication Summary</b>						
Function	Channel	RX Frequency N/W	RX Tone/NAC	TX Frequency N/W	TX Tone/NAC	Mode
TACTICAL	5	166.7750	146.2	166.7750	146.2	A
COMMAND	9	169.7250	88.5	164.2500	100.0	A
AIR TO GROUND	14	171.8625		171.8625		A
<b>9. Prepared By (Resource Unit Leader)</b>			<b>Approved By (Planning Section Chief)</b>		<b>Date</b>	<b>Time</b>
JILL JOHNSON			HOWARD JOHNSON		08/06/2021	2000

**Division/Group Assignment List (ICS 204 WF)**  
**Controlled Unclassified Information//Basic**

<b>1. Incident Name:</b>				<b>3.</b>			
WHITMORE				<b>Branch:</b>		<b>Division/Group</b>	
<b>2. Operational Period: DAY / NIGHT</b>						<b>M/P</b>	
Date/Time From: 08/07/2021 0600 SAT		Date/Time To: 08/08/2021 0600 SUN					
<b>4. Operations Personnel</b>							
<b>OPERATIONS CHIEF</b>		MATT CASTLE; KURT RANTA (T) TONY ENGEL; JEFF BOUSCHOR		<b>DIVISION/GROUP SUPERVISOR</b>		MIKE JACKSON SAM STEINSHOUER (T)	
<b>SAFETY OFFICER</b>		TROY CORN; JACK CATES DON WALLER (T)		<b>AIR OPERATIONS BRANCH DIRECTOR</b>		PAUL BALFOUR	
<b>6. Control Operations/Work Assignments:</b>							
<u>Div M</u> TASK: Anchor and flank fire west of Lower Coyote Creek Road north from Colombia River Road and division M/P break. PURPOSE: Protect property and natural resources east of Lower Coyote Creek Road. END STATE: Fire is contained south of Coyote Creek Road. Structures south of the fire area are not threatened.							
<u>Div P</u> TASK: Anchor and flank fire from division M/P break north of Hamilton Ridge Road. PURPOSE: Protect property and resources west of Hamilton Ridge Road. END STATE: Fire is contained west of Hamilton Ridge Road and north of Columbia River Road. Structures south of the incident area are secure.							
<b>7. Special Instructions:</b>							
** Resource is assigned to the Summit Trail fire and is on loan to Whitmore fire.  Protect cultural resources; contact resource advisor as needed.							
<b>8. Division/Group Communication Summary</b>							
Function	Channel	RX Frequency N/W	RX Tone/NAC	TX Frequency N/W	TX Tone/NAC	Mode	
TACTICAL	5	166.7750	146.2	166.7750	146.2	A	
COMMAND	9	169.7250	88.5	164.2500	100.0	A	
AIR TO GROUND	14	171.8625		171.8625		A	
<b>9. Prepared By (Resource Unit Leader)</b>			<b>Approved By (Planning Section Chief)</b>			<b>Date</b>	<b>Time</b>
JILL JOHNSON			HOWARD JOHNSON			08/06/2021	2000

**Division/Group Assignment List (ICS 204 WF)**  
**Controlled Unclassified Information//Basic**

<b>1. Incident Name:</b>			<b>3.</b>			
WHITMORE			<b>Branch:</b>		<b>Division/Group</b>	
<b>2. Operational Period: DAY / NIGHT</b>					<b>W/Z</b>	
Date/Time From: 08/07/2021 0600 SAT		Date/Time To: 08/08/2021 0600 SUN				
<b>4. Operations Personnel</b>						
<b>OPERATIONS CHIEF</b>		MATT CASTLE; KURT RANTA (T) TONY ENGEL; JEFF BOUSCHOR		<b>DIVISION/GROUP SUPERVISOR</b>		NIKIA HERNANDEZ
<b>SAFETY OFFICER</b>		TROY CORN; JACK CATES DON WALLER (T)		<b>AIR OPERATIONS BRANCH DIRECTOR</b>		PAUL BALFOUR
<b>5. Resources Assigned this Period</b>						
Strike Team / Task Force / Resource Designator		LWD	Leader	Number Persons	Drop Off PT./Time	Pick Up PT./Time
O-10 SOF2			DAN GARNER	1	ICP/0600	ICP/1800
E-316 ENGG6 AAA THUNDERBOLT **		08/18	TOBY YAZZIE	2	ICP/0600	ICP/1800
E-2 DOZ2 SILVER-NICKEL LOGGING LLC		08/19	TOBY EPPERSON	2	ICP/0600	ICP/1800
O-43 REMS 9 SPOKANE		08/19	CLINT JUNTUNEN	4	ICP/0600	ICP/1800
<b>6. Control Operations/Work Assignments:</b>						
<p><u>Div W</u>  TASK - Anchor and flank fire perimeter north of Columbia River Road. Burn out as needed.  PURPOSE - Protect natural resources and property southeast of the fire.  END STATE - The fire is contained north of Columbia River Road. Structures are no longer threatened.</p> <p><u>Div Z</u>  TASK - Anchor and flank fire perimeter north of Columbia River Road. Burn out as needed.  PURPOSE - Protect natural resources and property southeast of the fire.  END STATE - The fire is contained north of Columbia River Road. Structures are no longer threatened.</p>						
<b>7. Special Instructions:</b>						
<b>8. Division/Group Communication Summary</b>						
Function	Channel	RX Frequency N/W	RX Tone/NAC	TX Frequency N/W	TX Tone/NAC	Mode
TACTICAL	3	168.6000	146.2	168.6000	146.2	A
COMMAND	9	169.7250	88.5	164.2500	100.0	A
AIR TO GROUND	14	171.8625		171.8625		A
<b>9. Prepared By (Resource Unit Leader)</b>			<b>Approved By (Planning Section Chief)</b>		<b>Date</b>	<b>Time</b>
JILL JOHNSON			HOWARD JOHNSON		08/06/2021	2000

**Division/Group Assignment List (ICS 204 WF)**  
**Controlled Unclassified Information//Basic**

<b>1. Incident Name:</b>			<b>3.</b>			
WHITMORE			<b>Branch:</b>		<b>Division/Group</b>	
<b>2. Operational Period: DAY / NIGHT</b>					<b>NIGHT</b>	
Date/Time From: 08/07/2021 0600 SAT		Date/Time To: 08/08/2021 0600 SUN				
<b>4. Operations Personnel</b>						
<b>OPERATIONS CHIEF</b>		MATT CASTLE; KURT RANTA (T) TONY ENGEL; JEFF BOUSCHOR		<b>DIVISION/GROUP SUPERVISOR</b>		JEFF PRICHER
<b>SAFETY OFFICER</b>		TROY CORN; JACK CATES DON WALLER (T)		<b>AIR OPERATIONS BRANCH DIRECTOR</b>		PAUL BALFOUR
<b>5. Resources Assigned this Period</b>						
Strike Team / Task Force / Resource Designator		LWD	Leader	Number Persons	Drop Off PT./Time	Pick Up PT./Time
E-9 ENG6 AAA FORESTRY		08/20	CHRIS MARTIN	3	ICP/1800	ICP/0600
E-317 ENG6 AQUA FORCE **		08/18	JASON PHILLIPS	2	ICP/1800	ICP/0600
GRANT COUNTY STRIKE TEAM						
STEN					ICP/1800	ICP/0600
E-2102 ENG4 EPHRATA FD B-2122		08/19	MIKE STUSSY	2	ICP/1800	ICP/0600
E-2103 ENG3 GRANT CO 5 585		08/19	SAM HOCHSTATTER	3	ICP/1800	ICP/0600
E-2104 ENG GRANT CO 6		08/19	DARYL DORMAIER	2	ICP/1800	ICP/0600
E-2105 ENG6 GRANT CO 12 B-1216		08/19	MARK BISE	2	ICP/1800	ICP/0600
E-2106 ENG5 DOUGLAS CO 15 B-1523		08/19	JEFF ZAHN	4	ICP/1800	ICP/0600
E-2107 WTS2 MOSES LAKE FIRE T-1		08/19	BRANDON BURNS	2	ICP/1800	ICP/0600
ENG ELECTRIC CITY					ICP/1800	ICP/0600
<b>6. Control Operations/Work Assignments:</b>						
TASK: Patrol and secure structures as needed.						
PURPOSE: Reduce risk to property.						
END STATE: Fire is no longer threat to structures.						
<b>7. Special Instructions:</b>						
<b>8. Division/Group Communication Summary</b>						
Function	Channel	RX Frequency N/W	RX Tone/NAC	TX Frequency N/W	TX Tone/NAC	Mode
TACTICAL	6	168.2500	146.2	168.2500	146.2	A
COMMAND	9	169.7250	88.5	164.2500	100.0	A
AIR TO GROUND	14	171.8625		171.8625		A
<b>9. Prepared By (Resource Unit Leader)</b>			<b>Approved By (Planning Section Chief)</b>		<b>Date</b>	<b>Time</b>
JILL JOHNSON			HOWARD JOHNSON		08/06/2021	2000

**AIR OPERATIONS SUMMARY**

PREPARED BY: Paul Balfour

PREPARED DATE/TIME: August 6, 2021 1800hrs

<b>INCIDENT NAME:</b> <b>WHITMORE</b>	<b>2. OPERATIONAL PERIOD:</b> Date: 8/7/2021      Helibase Start Time: 0830 End Time: 2030      Sunrise: 0537 Sunset: 2024 (Times valid for Nespelem)
------------------------------------------	-------------------------------------------------------------------------------------------------------------------------------------------------------------

<b>3. REMARKS (Safety Notes, Hazards, Air Operations Special Equipment, etc.):</b> General Aviation, See & Avoid  Bucket work, Retardant drops: ensure area is clear of ground personnel before dropping; watch for wires; be aware of potential for turbulence at ridge tops, saddles, canyons, etc *** BE AWARE OF FATIGUE, TAKE LONGER BREAKS WHEN FLYING IN SMOKEY CONDITIONS. *** Report all TFR intrusions to Air Operations, Air Support or Helibase as soon as possible.	<b>4. MEDEVAC A/C:</b> Contact Mt Tolman Fire Center 509-634-310 N125CL Short Haul PSICC 425-783-6150	<b>5. TFR #1/1705 7nm 6500msl 124.225 (A5)</b>
-------------------------------------------------------------------------------------------------------------------------------------------------------------------------------------------------------------------------------------------------------------------------------------------------------------------------------------------------------------------------------------------------------------------------------------------------------------------------------------------------	----------------------------------------------------------------------------------------------------------------	------------------------------------------------

PERSONNEL	Phone	7. FREQUENCIES	AM	FM	8. FIXED-WING	# Avail / Type/ Make-Model / FAA N# / Base(s)
AOBD: Paul Balfour O-1.40	509-993-8739	AIR/AIR Primary (A5)	124.225		Fixed Wing/Buckets	DIVS order thru ATGS if up, or Whitmore Communications
ASGS: Tim Lyda O-1.41	206-473-8560	AIR/AIR Secondary (A16)	134.050			
HEBM:		AIR/GROUND Primary (A-17)		171.8625	ATGS Aircraft	AA Mike Stout O-47 Kodiak N420Q (A20)  LATs Order through Air Attack/AOBD Mt Tolman Dispatch
HEMG:		AIR/GROUND Secondary		156.0225 T-103.5		
ATGS: Mike Stout O-47	208-304-4237	Air Keller Flt Flw		Rx172.775 T-156.7		
ATGS:				Tx166.325 T-123.0		
Mt Tolman:	509-634-3100	Air/Grnd 03 IA		166.6125	NOTES:	Whitmore Helibase: N48 08 75 Elevation 1769 W118 59 00
Debbie Coudell	509-570-4133	A/G DNR IA		159.270 T-103.5		
Michelle	509-675-0675					email costs to timlyda22@gmail.com

**9. HELICOPTERS**

FAA N#	TY	MAKE/MODEL	BASE	START	AVAIL	REMARKS	FAA N#	TY	MAKE/MODEL	BASE	START	AVAIL	REMARKS

# INCIDENT RADIO COMMUNICATIONS PLAN (ICS 205)

Controlled Unclassified Information//Basic

<b>1. Incident Name:</b>	<b>2. Date/Time Prepared:</b>	<b>3. Operational Period: DAY / NIGHT</b>	
WHITMORE	Date: 08/06/2021 Time: 2000	Date/Time From: 08/07/2021 0600 SAT	Date/Time To: 08/08/2021 0600 SUN

**4. Basic Radio Channel Use:**

Zone Group	Ch #	Function	Channel Name/Trunked Radio System Talkgroup	Assignment	RX Freq	RX Tone/NAC	TX Freq	TX Tone/NAC	Mode (A,D, or M)	Remarks
	1	TACTICAL	TAC 1	DIV A / K	168.0500	146.2	168.0500	146.2	A	
	2	TACTICAL	TAC 2		168.2000	146.2	168.2000	146.2	A	
	3	TACTICAL	TAC 3	DIV W / Z	168.6000	146.2	168.6000	146.2	A	
	4	TACTICAL	TAC 4		166.7250	146.2	166.7250	146.2	A	
	5	TACTICAL	TAC 5	DIV M / P	166.7750	146.2	166.7750	146.2	A	
	6	TACTICAL	TAC 6	NIGHT	168.2500	146.2	168.2500	146.2	A	
	7	COMMAND	CMD 7	RESERVED	173.9250	146.2	169.8375	146.2	A	ARMSTRONG LO
	8	COMMAND	CMD 8	RESERVED	159.4275	192.8	151.2725	192.8	A	NOT IN SERVICE
	9	COMMAND	CMD 9	ALL DIVS	169.7250	88.5	164.2500	100.0	A	FIRE A-MOSES MTN
	10	COMMAND	MOSES	IA	169.7125	136.5	164.1625	100.0	A	FIRE B-MOSES MTN-IA ONLY
	11	TACTICAL	WA REDNET	IA	153.8300		153.8300		A	IA ONLY
	12	TACTICAL	C TAC	IA	166.9750	151.4	166.9750	151.4	A	IA ONLY
	13	AIR TO GROUND	ATG 03	IA	166.6125		166.6125		A	IA ONLY
	14	AIR TO GROUND	A/G PRI	PRIMARY	171.8625		171.8625		A	AIR TO GROUND PRIMARY
	15	AIR TO GROUND	A/G SEC	SECONDARY	156.0225	103.5	156.0225	103.5	A	LOW POWER ONLY
	16	AIR GUARD	AIRGUARD	AIRGUARD	168.6250		168.6250	110.9	A	EMERGENCY AIR ONLY

**5. Special Instructions:**

<b>6. Prepared By</b> (Communications Unit Leader)	Name: MISSY PARKER	Signature: <i>Missy Parker</i>
ICS 205	IAP Page	Date/Time: 08/06/2021 2000

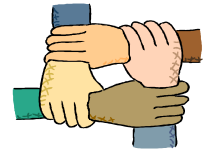
Controlled Unclassified Information//Basic

FINAL





# Human Resource Message



## Whitmore Fire August 7-8, 2021 0600-0600

**Patience, Respect and Kindness:** Please be patient, respectful, and kind with your co-workers and with all members of this community. With a little patience, a lot of respect and a whole bunch of kindness, we can maintain a positive work environment throughout this fire assignment. These are simple words; however, their impact is huge.

As a reminder to everyone working on this incident, we have zero tolerance for the illegal use of non-prescription drugs or alcohol. The use, sale, purchase, transfer, or possession of any illegal substances that cause impairment, or any legal, non-medically authorized substances that cause impairment, is strictly prohibited in the workplace.

The safety of our workforce is the number one priority of this team and of our agency administrators. Please do not put yourself or others at risk, always be fit for duty, take care of yourselves and look out for each other.

**Thought for the Day:** "Patience is not the ability to wait, but the ability to keep a good attitude while waiting." – Joyce Meyer

\*\*\*\*\*\*\*\*\*\*

**Lost and Found:** Check the Lost and Found box, located at the check-in table in front of the ICP, for Lost or Found Items.

**Mailing Address:** Nespelem Community Center, 5 School Rd. Loop, Nespelem, WA 99155. Please have your mail addressed with your Name/NW Team 12 and Division. The Public Information Officer will announce receipt of any mail at the morning briefing.

**COVID:** Please practice social distancing, wash your hands, use hand sanitizer, wear a mask. We are all in this together so let's get through this together. Thank you!

**Stay safe, be patience, be respectful, be kind, and have a great day!**

*Susie Manezes, NW-Team 12- Human Resource Specialist (HRSP)  
Contact Number: 602-571-9327 (Call or Text) Email: smanezes@blm.gov*



## Whitmore Fire Finance

FSC2 – Cheri Fuller, FSC2 (T) Christina Goebel

Email : [2021.whitmore.finance@firenet.gov](mailto:2021.whitmore.finance@firenet.gov)

Phone: 425-495-3420

Hours of operation 0530 – 2200

*There is a box located outside of the ICP where CTRs and Shift Tickets can be left. If you have questions and need to talk to anyone in finance, please call the number above. You can also email us at the email.*

*Personal Time – Carol Long or Frances Tobia*

*Equipment Time & VIPR – Mark Bohnet or Todd Powell*

*Please remember to do your part and helping us, by turning in your time.*

*There are 2 fires that we are working so please make sure to put in the remarks what fire you are on.*



# Pro Tip: Map Download

How to resolve troubles with downloading maps into Avenza.

**Note:** These directions were written for Apple, but the steps are roughly the same for Android.

## Start Here:

1. Connect to Wi-Fi as the local area's cellular network is not fast enough for large file downloads. This may result in a browser timeout and error message about the map not being able to download to be displayed. The Community Center has a guest Wi-Fi that can be utilized.
2. For either method below, **START BY SCANNING THE QR CODE** on the front of the IAP to get to the FTP site and 'Current\_Maps' folder.



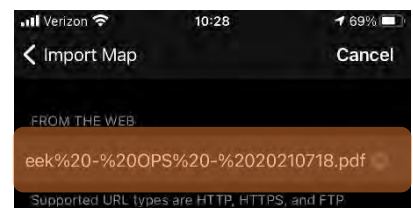
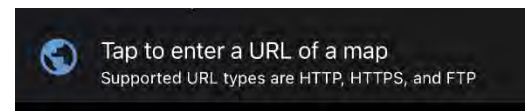
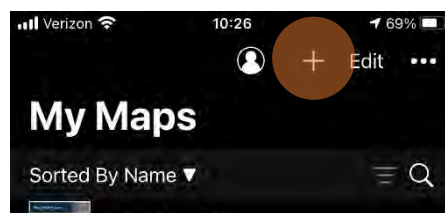
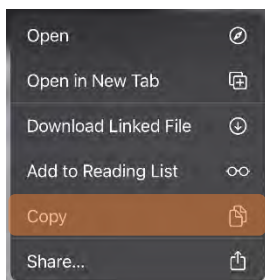
## Method 1: From a browser

1. Tap on the desired map link and wait for the preview.  
*\* If it fails to load, use method 2 instead*
2. Tap the 'send to' icon (square with up arrow)
3. Choose the Avenza app



## Method 2: From Avenza direct

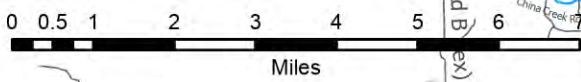
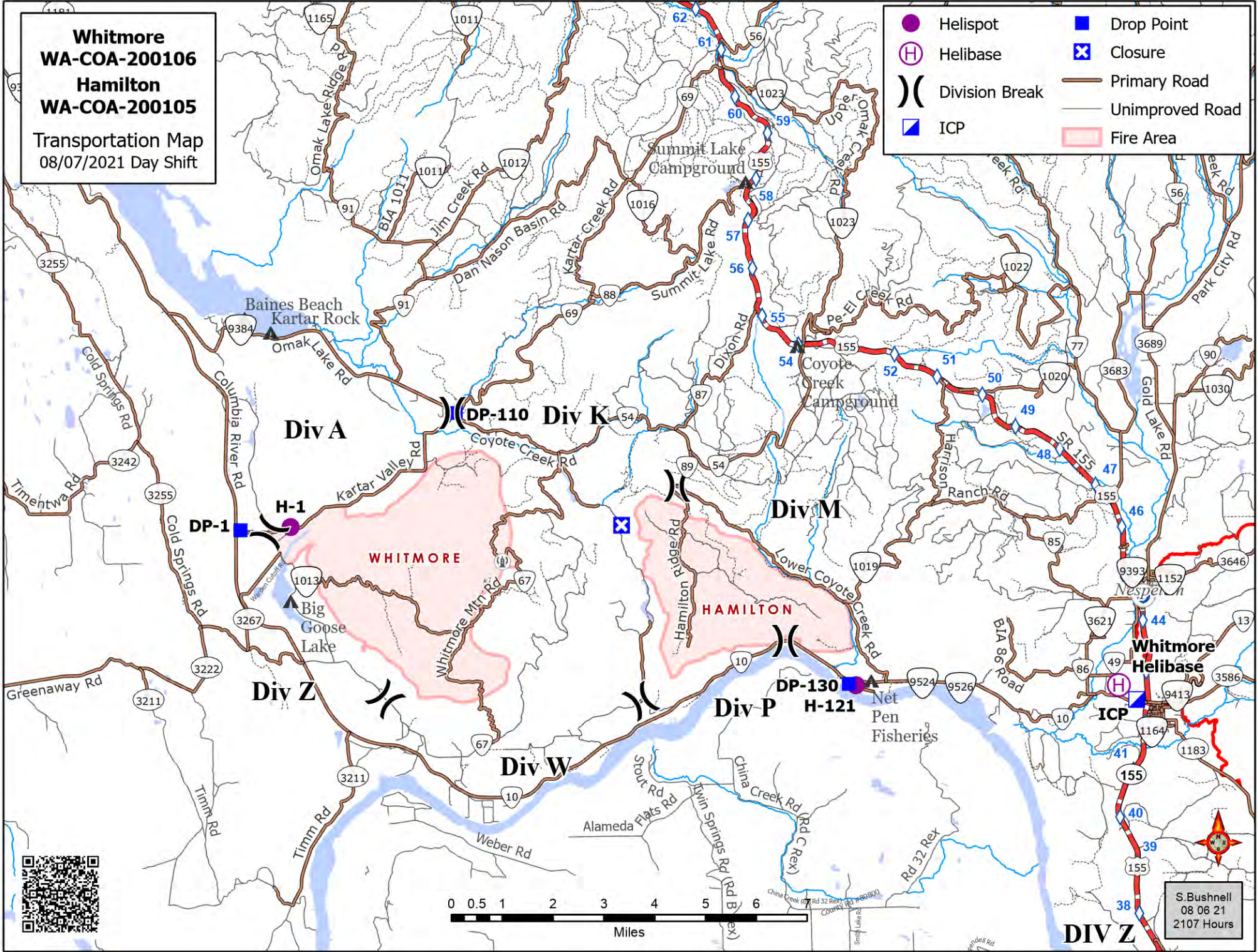
1. Tap and hold on the desired map link, then choose 'copy' to copy the direct URL to the map
2. Launch the Avenza app
3. When not in any map... Tap the + (plus) icon at the top of the screen
4. Choose the load from URL option (last choice)
5. Paste the direct URL to the map
6. Tap 'Done' ; the map will begin downloading





**Whitmore  
WA-COA-200106  
Hamilton  
WA-COA-200105**  
Transportation Map  
08/07/2021 Day Shift

● Helispot	■ Drop Point
⊕ Helibase	⊗ Closure
⌋ Division Break	— Primary Road
▣ ICP	— Unimproved Road
	■ Fire Area



S. Bushnell  
08 06 21  
2107 Hours



## WHITMORE COVID-19 MITIGATIONS:

**Supervisors are required to go over this list each morning with assigned resources**

In the last 24 hours have you experienced:

Symptom
Cough more than expected?
Shortness of breath or difficulty breathing?
Fever? Chills?
Muscle pain, outside your normal for firefighting?
Sore throat?
New loss of taste or smell?
Fatigue, outside your normal for firefighting?
Headache, outside your normal for firefighting?
Congestion or runny nose, outside your normal for firefighting?
Nausea or vomiting
Diarrhea
<i>* Take temperature with no-touch thermometer, if available *</i>

- **Wear a mask in fire camp regardless of vaccination status, unless outdoors and able to maintain at least 6ft of distance at all times, alone in an enclosed space or actively engaged in firefighting on the fireline.**
- **Use the Zoom link provided to join briefings remotely.**
- **Observe 6ft Distancing whenever possible.**
- **Conduct daily verbal screening checks within crews, report any COVID-like symptoms to your direct supervisor. Supervisors should report any positive symptoms to the Medical Unit for next steps.**
- **Observe “Module as One” practices – the only close contact you should have is with the crew (engine, handcrew, etc.) that you live and work with all summer. Observe social distancing and masking around everyone else. Do not co-mingle with other crews or “modules” in camp or on the line.**
- **Send crew representatives to pick up meals.**
- **No entry to ICP building except Incident Management Team members**
- **Wash hands frequently and disinfect high-traffic areas on a regular basis.**
- **Limit close contact between firefighters and the public to prevent exposure and spread.**



## EMERGENCY PLAN

### INCIDENT WITHIN AN INCIDENT

#### ON SCENE SUPERVISOR

**In the event of an accident or medical incident of any size, your primary responsibility is to ENSURE that the victim(s) receive prompt and effective Triage, Treatment and Transportation.**

- Conduct size-up of the incident (nature of accident, number type of resources involved, latitude and longitude location): notify incident communications center and supervisor, request assistance as needed.
- Order and coordinate medical and support response to the accident.
- Evaluate special needs (law enforcement, haz mat, etc.).
- Clear the command frequency if medical emergency; coordinate with incident communications and air attack for air medical transportation needs
- Preserve and photograph the scene for accident investigation.
- Remain aware of surroundings and the status of the main incident (delegate personnel to monitor the main fire) to ensure safety of medical treatment personnel.
- Until relieved, supervise and manage all personnel involved at the incident scene.
- **ENSURE THE MEDICAL INCIDENT REPORT IN THE INCIDENT ACTION PLAN IS BEING USED AND FOLLOWED.**

# MEDICAL PLAN (ICS 206 WF)

20 Incident/Project Name		1. Operational Period						
Whitmore Fire		Date/Time 8/07-08/2021 0600-0600						
2. Ambulance Services								
Name	Complete Address	Phone	Advanced Life Support (ALS)					
			Yes	No				
Colville Tribal EMS Nespelem, WA	410 10 <sup>th</sup> St. Nespelem, WA 99155	911 - Dispatch 509-634-2472 509-978-9323		x				
Lifeline Ambulance	912 Koala Ave Omak, WA 98841	911 - Dispatch 509-663-8091	x					
3. Air Ambulance Services								
Name	Phone	Type of Aircraft & Capability						
Airlift Northwest	800-426-2430 or 911	Rotor in Wenatchee						
Life Flight Network	800-232-0911	2 Rotors, 1 Fixed Wing, Spokane						
4. Hospitals								
Name Complete Address	GPS Datum – WGS 84 Coordinate Standard Degrees Decimal Minutes DD° MM.MMM' N - Lat DD° MM.MMM' W - Long		Travel Time From ICP		Phone	Helipad		Level of Care Facility
	Lat:	Long:	Air	Gnd		Yes	No	
Coulee Medical Center 411 Fortuyn Rd Grand Coulee, WA 99133	44°56.5186' N	119°0.4333' W	20 Min	40 Min	509-633-1753	x		Level 4 Trauma
	VHF:							
	48°23.8336' N	119°32.8758' W	40 Min	1Hr 14 min	509-826-1760	x		Level 4 Trauma
Mid-Valley Hospital 912 Koala Ave Omak, WA 98841	47°24.4340' N	120°19.3664' W	1Hr 10 Min	2 Hr 30 Min	509-662-1511	x		Level 2 Trauma
	VHF :							
	47°36.1897' N	122°19.4759' W	2 Hr	4 Hr	541-222-6929	x		Level 1 Trauma Burn Center
Harborview Medical 325 9 <sup>th</sup> Ave Seattle, WA 98104	47°36.1897' N	122°19.4759' W	2 Hr	4 Hr	541-222-6929	x		Level 1 Trauma Burn Center
	VHF:		15 Min	30 Min				
5. Division   Branch   Group	Capability	Personnel						
Div A/K		Medic 1 Lipsker O-62						
Div W/Z		Unstaffed						
Div M/P		REM 9 Juntunen O-43						
Night Shift		Unstaffed						
6. Prepared By (Medical Unit Leader)		7. Date/Time	8. Reviewed By (Safety Officer)		9. Date/Time			
Eamonn Ryan, Diana Braun, Lee Venning (T) <i>Lee Venning</i>		08/06/2021 1800	Don Waller (T) <i>Don Waller</i>		08/06/2021 1800			



# MEDICAL PLAN (ICS 206 WF)

Controlled Unclassified Information//Basic

## Medical Incident Report

**FOR A NON-EMERGENCY INCIDENT, WORK THROUGH CHAIN OF COMMAND TO REPORT AND TRANSPORT INJURED PERSONNEL AS NECESSARY.**

**FOR A MEDICAL EMERGENCY: IDENTIFY ON SCENE INCIDENT COMMANDER BY NAME AND POSITION AND ANNOUNCE "MEDICAL EMERGENCY" TO INITIATE RESPONSE FROM IMT COMMUNICATIONS/DISPATCH.**

Use the following items to communicate situation to communications/dispatch.

**1. CONTACT COMMUNICATIONS / DISPATCH (Verify correct frequency prior to starting report)**

*Ex: "Communications, Div. Alpha. Stand-by for Emergency Traffic."*

**2. INCIDENT STATUS: Provide incident summary (including number of patients) and command structure.**

*Ex: "Communications, I have a Red priority patient, unconscious, struck by a falling tree. Requesting air ambulance to Forest Road 1 at (Lat./Long.) This will be the Trout Meadow Medical, IC is TFLD Jones. EMT Smith is providing medical care."*

Severity of Emergency / Transport Priority	<input type="checkbox"/> RED / PRIORITY 1 Life or limb threatening injury or illness. Evacuation need is IMMEDIATE <i>Ex: Unconscious, difficulty breathing, bleeding severely, 2° – 3° burns more than 4 palm sizes, heat stroke, disoriented.</i> <input type="checkbox"/> YELLOW / PRIORITY 2 Serious Injury or illness. Evacuation may be DELAYED if necessary. <i>Ex: Significant trauma, unable to walk, 2° – 3° burns not more than 1-3 palm sizes.</i> <input type="checkbox"/> GREEN / PRIORITY 3 Minor Injury or illness. Non-Emergency transport <i>Ex: Sprains, strains, minor heat-related illness.</i>	
Nature of Injury or Illness & Mechanism of Injury		<i>Brief Summary of Injury or Illness (Ex: Unconscious, Struck by Falling Tree)</i>
Transport Request		<i>Air Ambulance / Short Haul/Hoist Ground Ambulance / Other</i>
Patient Location		<i>Descriptive Location &amp; Lat. / Long. (WGS84)</i>
Incident Name		<i>Geographic Name + "Medical" (Ex: Trout Meadow Medical)</i>
On-Scene Incident Commander		<i>Name of on-scene IC of Incident within an Incident (Ex: TFLD Jones)</i>
Patient Care		<i>Name of Care Provider (Ex: EMT Smith)</i>

**3. INITIAL PATIENT ASSESSMENT: Complete this section for each patient as applicable (start with the most severe patient)**

Patient Assessment: See IRPG page 106

Treatment:

**4. TRANSPORT PLAN:**

Evacuation Location (if different): (Descriptive Location (drop point, intersection, etc.) or Lat. / Long.) Patient's ETA to Evacuation Location:

Helispot / Extraction Site Size and Hazards:

**5. ADDITIONAL RESOURCES / EQUIPMENT NEEDS:**

*Example: Paramedic/EMT, Crews, Immobilization Devices, AED, Oxygen, Trauma Bag, IV/Fluid(s), Splints, Rope rescue, Wheeled litter, HAZMAT, Extrication*

**6. COMMUNICATIONS: Identify State Air/Ground EMS Frequencies and Hospital Contacts as applicable**

Function	Channel Name/Number	Receive (RX)	Tone/NAC *	Transmit (TX)	Tone/NAC *
COMMAND					
AIR-TO-GRND					
TACTICAL					

**7. CONTINGENCY: Considerations: If primary options fail, what actions can be implemented in conjunction with primary evacuation method? Be thinking ahead.**

**8. ADDITIONAL INFORMATION: Updates/Changes, etc.**

**REMEMBER:** Confirm ETA's of resources ordered. Act according to your level of training. Be Alert. Keep Calm. Think Clearly. Act Decisively.

Controlled Unclassified Information//Basic