

Incident Action Plan

Whitmore Fire

Aug 8-9, 2021
0600-1800 DAYSHIFT
1800-0600 NIGHTSHIFT

MORNING BRIEFING @ 0600

Morning briefing will be a ZOOM call, use the information below to connect:

Phone: 1-669-254-5252

Meeting ID: 160 329 1397

Passcode: 252064



SCAN QR code to JOIN VIA ZOOM



Whitmore - WA-COA-200106
221-KTO / N7SC [P] 1522



Download
IAP's



Scan the QR Code to fill out the check in form or type the following into your internet browser:
<https://forms.office.com/g/agvAKcC86U>



Download
MAPS

INCIDENT OBJECTIVES (ICS 202)

1. Incident Name:	2. Operational Period: DAY / NIGHT	
WHITMORE	Date/Time From: 08/08/2021 0600 SUN	Date/Time To: 08/09/2021 0600 MON
3. Objective(s):		
<p>Implement risk management practices for the safety of firefighters, other responders and the public as the first priority.</p> <p>Minimize impacts to private property, critical infrastructure, timber, cultural and natural resources including water, fish, wildlife, and range land.</p> <p>Maintain and strengthen community relationships and provide timely fire information to the public and cooperators.</p> <p>Establish and maintain all current COVID-19 mitigation protocols according to CDC and agency guidelines.</p>		
4. Operational Period Command Emphasis:		
Implement direct suppression tactics where safe to do so to minimize fire size, protect timber values and private property.		
General Situational Awareness:		
Monitor the weather conditions and base all actions on current and expected fire behavior.		
5. Site Safety Plan Required? Yes <input type="checkbox"/> No <input checked="" type="checkbox"/>		
Approved Site Safety Plan(s) Located		
6. Incident Action Plan (the items checked below are included in this Incident Action Plan):		
<input checked="" type="checkbox"/> ICS 202 <input checked="" type="checkbox"/> ICS 203 <input checked="" type="checkbox"/> ICS 204 <input checked="" type="checkbox"/> ICS 205 <input type="checkbox"/> ICS 205A <input checked="" type="checkbox"/> ICS 206	<input type="checkbox"/> ICS 207 <input type="checkbox"/> ICS 208 <input checked="" type="checkbox"/> ICS 220 <input checked="" type="checkbox"/> Map/Chart <input checked="" type="checkbox"/> Weather Forecast/Tides/Currents	Other Attachments: <input type="checkbox"/> _____ <input type="checkbox"/> _____ <input type="checkbox"/> _____ <input type="checkbox"/> _____
7. Prepared by: HOWARD JOHNSON Position/Title: PSC2	Signature: <i>Howard Johnson</i>	
8. Approved by Incident Commander:	Name: BOBBY SHINDELAR	Signature: <i>Bobby Shindelar</i>
ICS 202	IAP Page	Date/Time:

ORGANIZATION ASSIGNMENT LIST (ICS 203)

1. Incident Name:		2. Operational Period: DAY / NIGHT	
WHITMORE		Date/Time From: 08/08/2021 0600	SUN
		Date/Time To: 08/09/2021 0600	MON
3. Incident Commander(s) and Command Staff:		COMMUNICATIONS UNIT	MISSY PARKER
IC/UC	BOBBY SHINDELAR	MEDICAL UNIT	EAMONN RYAN; DIANA BRAUN LEE VENNING (T)
DEPUTY		FOOD UNIT	ALEXANDER LILLA
SAFETY OFFICER	TROY CORN JACK CATES; DON WALLER (T)		
INFORMATION OFFICER	MARY BEAN ROLAND EMETAZ		
LIAISON OFFICER	SCOTT CRAWFORD		
HUMAN RESOURCE SPECIALIST	SUSIE MANEZES		
HEALTH LIAISON	LIV STECKER	7. Operations Section:	
		OPS SECTION CHIEF	MATT CASTLE KURT RANTA (T)
		PLANNING OPS	TONY ENGEL JEFF BOUSCHOR
4. Agency/Organization Representative(s):			
Agency/Organization	Name		
COLVILLE AGENCY	PHIL WAPATO		
DNR	PAT RYAN	DIVISION/GROUP	A/K
			JEROMY WILSON JAMES DICKINSON (T)
		DIVISION/GROUP	M/P
			MIKE JACKSON SAM STEINSHOUER (T)
5. Planning Section:		DIVISION/GROUP	L
CHIEF	HOWARD JOHNSON JILL JOHNSON (T)	DIVISION/GROUP	W/Z
RESOURCES UNIT	NATHAN JEFFRIES (VIRTUAL)	DIVISION/GROUP	NIGHT
SITUATION UNIT	DAVE WISCHER		(UNSTAFFED)
DOCUMENTATION UNIT			NIKIA HERNANDEZ
DEMOBILIZATION UNIT	MIKE HESTON (VIRTUAL)		JEFF PRICHER
FIRE BEHAVIOR ANALYST	DON STRAND	7b. Air Operations Branch:	
GIS SPECIALIST	SHAWN BUSHNELL MIKE TONKEL (T)	AIR OPS BRANCH DIRECTOR	PAUL BALFOUR
TECHNOLOGY SUPPORT SPECIALIST	GEORGE JENKINS	AIR ATTACK SUPERVISOR	
INCIDENT METEOROLOGIST	BOB TOBIN	AIR SUPPORT SUPERVISOR	TIM LYDA
		AIR TANKER COORDINATOR	
6. Logistics Section:		8. Finance/Administration Section:	
CHIEF	DAN SOPTICH	CHIEF	CHERI FULLER CHRISTINA GOEBEL (T)
DEPUTY	KEVIN HAUGHTON	TIME UNIT	CAROL LONG
SUPPLY UNIT	JOHN KAUPA	COMPENSATION UNIT	CHERI FULLER
FACILITIES UNIT	KAREN ZIRKLE	PROCUREMENT UNIT	MARK BOHNET
GROUND SUPPORT UNIT	DAVE HARSH	COST UNIT	KATHLEEN HIGH (VIRTUAL)
9. Prepared By:	Name: JILL JOHNSON	Position/Title: PSC2 (T)	Signature:
ICS 203	IAP Page	Date/Time: 08/07/2021 1600	

Fire Weather Forecast

FORECAST NO: 4
PREDICTION FOR: Sunday-Sunday night
Shift Date: August 8-9, 2021 0600-0600
TIME AND DATE
FORECAST ISSUED: 8/7/2021 at 2000

INCIDENT: Whitmore-Hamilton Fire
UNIT: Colville Reservation
SIGNED: Bob Tobin
Incident Meteorologist (IMET)

Weather Discussion: An upper level low will move through the region Sunday and push out of the region Sunday night. With the low right over central Washington there will be enough moisture and instability for a slight chance of showers and possible thunderstorms through sunset. Temperatures will be cooler again today and likely the coolest of the week. High pressure begins to build into the region on Monday for a warming and drying trend the remainder of the week. Temperatures will increase to well above normal with relative humidity below normal. to the region through the week

WEATHER FORECAST:

Today:
SKY/WEATHER: Partly to mostly cloudy. A slight chance of showers and thunderstorms in the afternoon.
High Temperature...64-69 above 2500 feet and 75-80 below 2500 feet.
24hr Change...Down 4-7 degrees.
Min RH.....40-45% above 2500 feet and 32-36% below 2500 feet.
24hr Change...Up 2-5%
20-FOOT WINDS: Northwest 10-15 mph with gusts 20 to 25 mph. Winds gusty and erratic near thunderstorms.
CWR (>=0.10")....30% **LAL....**2 **Haines Index...2 (Very Low)** **Mixing Height...8000 ft AGL**

Tonight:
Weather: Partly cloudy...clearing overnight.
Low Temperature...55-60.
Max RH.....60-70%
20-FOOT WINDS: Northwest 5-10 mph.
CWR (>=0.10")....0% **LAL...1.**

Monday:
SKY/WEATHER: Partly cloudy and warmer.
High Temperature...75-80 above 2500 feet and 84-88 below 2500 feet.
Min RH.....28-32% above 2500 feet...24-28% above 2500 feet
20-FOOT WINDS: Southwest 8-10 mph with gusts to 15 mph.
CWR (>=0.10").... 0% **LAL....1** **Haines Index...2 (Very Low)** **Mixing Height...7200 ft AGL**

Extended Outlook

Tuesday... Mostly sunny and warmer. Low: 60-65...High: 80-90. Min RH: 20-30% Winds: Southwest-west 8-10 mph with gusts to 20 mph.
Wednesday...Partly cloudy. Low: 65-70...High: 90-100. Min RH: 15-25% Winds: West-northwest 8-12 mph with gusts 15-20 mph.

FIRE BEHAVIOR FORECAST

FORECAST NUMBER: 4	TYPE OF FIRE: Wildland
FIRE NAME: Whitmore	OPERATIONAL PERIOD: Aug 8-9, 2021 Day-Night-Shift
DATE ISSUED: Aug 7, 2021	TIME ISSUED: 1600
UNIT: WA-COA	Don Strand FBAN

INPUTS

WEATHER SUMMARY: Cooler with a slight chance of showers and thunderstorms. Max temp 80, Min RH 32%. Winds- northwest 10-15 mph with gusts to 25 mph. Winds gusty and erratic near thunderstorms. LAL... 2

OUTPUTS

FIRE BEHAVIOR

GENERAL:

- This fire is a fuels driven fire with exceptional growth due to winds and additional increase of activity with wind/slope alignment. Due to very dry surface fuels (10-hour and larger) and drought stress live fuels in spite of cooler weather, fire behavior potential continues to be high to extreme with crowning and spotting.
- Fuels consist of grass and sage brush; scattered to heavy of timber overstory over a mix of grass, regeneration and timber litter and areas of thinning and logging slash.
- Head fire rates of spread in the grass and brush fuels will approach 50 chains/hour (about 50 feet/minute) with about 7-8 feet flame lengths. With the wind gusts, expect greater rates of spread and flame lengths.
- Most spotting will be short range and also from roll outs on steeper ground. Spotting distance will approach about 1000 ft although with periodic wind gusts to 25 mph, watch for spots up to 0.4 miles.
- Probability of Ignition will approach 60% unshaded in the afternoon and decreasing as temps decrease and humidity increases.

SPECIFIC:

DIV A/K: Expect aggressive fire spread today in the main drainages north and east of Coyote Creek Road. Fire will back and flank with upslope torching and crowning runs in the heavy timber. Areas of fire scar regen, fire spread will be mostly continuous fuels with periodic torching runs with winds and/or slope.

DIV M/P: Continue to watch for any flare ups in the riparian areas adjacent to fire lines. Forecasted winds have potential to carry embers into new fuels across fire lines and contribute to fire spread.

DIV W/Z: Pay attention to fire spread across the lower slopes above the Columbia River Road and the potential for intense fire creating embers that could cause spots across the main road.

Initial Attack: In the event we respond to a new start, remember light flashy fuels respond quickly to changes in wind speed, slope and/or directions.

NIGHT: Chance of gusty and erratic winds near any thunderstorms. Expect fire to remain active overnight.

AIR OPERATIONS: Watch for turbulence in the complex terrain. Smoke haze may impact visibility.

SAFETY

- **Chance of gusty and erratic winds near any thunderstorms.**
- **Pay attention to light and flashy fuels, Fire intensity can exponentially increase and quickly change directions with increases of wind and or slope.**
- **Burnout – watch for wind directions and speed. Pay attention to smoke drift across fire lines potentially causing spots.**
- **Smoke haze or cloud over the fire may modify how active fire behavior may become. In the event there is a thicker layer of smoke, and it clears, watch for significant increase in fire activity.**

Safety Message

8-9 August 2021

INCIDENT: Whitmore

OPERATIONAL PERIOD: 0600-0600

TOPICS: FIRING OPERATIONS AND DRIVING

FIRING OPERATIONS

Ensure all personnel are briefed of operations that affect them.

Wear appropriate PPE.

Ensure ignition plans are developed, briefed and communicated.

Ensure road security at firing points.

Ensure communication among firing and holding crews.

DRIVING

Driving safety is critical; Hwy 155 will become a transportation route, and has heavy traffic, although other main roads are closed, expect traffic, and some areas on the incident have narrow roads with limited sight distance and minimal turnouts. Drive with your lights on. Accidents happen fast. We are in a high traffic/high incident rate area. Limit speeds and maintain a longer vehicle spacing and keep awareness of other vehicles high. Always chock tires when parked and have a spotter when backing. Limit speeds at Basecamp to less than **5mph**.

DON'T EVER DEVELOP A PLAN THAT IS SO COMPLEX THAT YOU CAN'T EXPLAIN IT TO THOSE WHO HAVE TO CARRY IT OUT.

SAFETY OFFICER: Troy Corn, Jack Cates, Don Waller (T)

Deliberate Risk Assessment-Hazard Summary

8-9 August 2021

Hazard	Mitigation	Post Risk
Unburned Fuels/Firing Ops	Ensure management action points are implemented and followed. Weather updates as needed during burning operations. Locate indirect firelines to minimize the amount of unburned fuels. Ensure communications between all firing operations. Establish road security at all firing sites. Follow approved firing plan for unburned fuels.	Moderate
Communication	Evaluate for dead zones prior to engagement. Utilize human repeaters as needed. Ensure accountability of resources in problem areas. Be prepared if local traffic maximizes air time.	Moderate
Snags	Use avoidance to limit exposure time. Snag ahead to avoid exposure. Use qualified fallers, blasting, or alternate methods if needed. Conduct on-going risk analysis of all work areas. Follow Hazard Tree Safety Guidelines (IRPG page 22).	High
Extraction Time	Identify medivac sites and helispots. Initiate ground transport to accident site. Review IWI protocol to ensure familiarity.	High
Transportation	Signing of all incident roads that provide access to divisions. Practice defensive driving. In local communities obey the posted speed limits. Use reader boards to control entry as needed. Identify and evaluate contingency and alternate escape and travel routes.	High
Heavy Equipment	Post lookouts around equipment work areas. Establish communications with equipment boss and operator. Do not work down slope from equipment.	High
Transmission/Power Lines	Maintain one span radius from any downed line or compromised pole, be aware of smoke conductivity, report any downed lines or burning poles.	High
Aircraft	Utilize Air Attack. Ensure all resources are a safe distance from all bucket and retardant drops. Utilize air to ground primary radio channel.	High
Steep Terrain/Gravity	Do not work crews above or below each other. Post lookouts for rolling material. Watch footing in loose soil, rock and around vegetation. Do not work below heavy equipment. Scout and identify travel routes.	Moderate
Initial Attack	Ensure identified IA resources are briefed of expectations and ensure communication plan is provided. Ensure resources are briefed on IA command structure. Provide identified crews with area maps.	Moderate
Physical Factors	Maintain hydration schedule. Closely monitor work rate and implement rest periods. Maintain nutrition. Ensure adequate work/rest.	Moderate
Steep Terrain/Gravity	Do not work crews above or below each other. Post lookouts for rolling material. Watch footing in loose soil, rock and around vegetation. Do not work below heavy equipment. Scout and identify travel routes.	Moderate
Environmental Factors	Assess for known allergies and report to medical personnel. Obtain Bee/wasp spray and yellow jacket traps. Maintain an awareness of livestock and rattlesnakes.	Moderate
Fire Behavior	Be aware of burn windows and weather impacts and min/max RH for flashy fuels/local conditions. Report changes to FBAN and IMET.	Moderate
Public Interaction	Place new road closures as necessary and maintain current closures. Maintain awareness of evacuation areas and provide accurate information dissemination.	Low
Viral Transmission Mitigations, Communicable Disease	Maintain isolated ICP (remote briefings, etd), maintain social distancing, and wear face coverings in accordance with CDC recommendations. Report and isolate if not feeling well.	Low

Division/Group Assignment List (ICS 204 WF)
Controlled Unclassified Information//Basic

1. Incident Name:			3.			
WHITMORE			Branch:		Division/Group	
2. Operational Period: DAY / NIGHT					A/K	
Date/Time From: 08/08/2021 0600 SUN		Date/Time To: 08/09/2021 0600 MON				
4. Operations Personnel						
OPERATIONS CHIEF		MATT CASTLE; KURT RANTA (T) TONY ENGEL; JEFF BOUSCHOR		DIVISION/GROUP SUPERVISOR		JEROMY WILSON JAMES DICKINSON (T)
SAFETY OFFICER		TROY CORN; JACK CATES DON WALLER (T)		AIR OPERATIONS BRANCH DIRECTOR		PAUL BALFOUR
5. Resources Assigned this Period						
Strike Team / Task Force / Resource Designator		LWD	Leader	Number Persons	Drop Off PT./Time	Pick Up PT./Time
O-10 SOFR		08/09	DAN GARNER	1	ICP/0600	ICP/1800
O-11 TFLD		08/09	DAVE HYLTON	1	ICP/0600	ICP/1800
O-12 HEQB		08/21	TRAVIS BRUCH	1	ICP/0600	ICP/1800
C-7 HC1 LA GRANDE IHC		08/20	JOSH DIACETIS	20	ICP/0600	ICP/1800
C-32 HC2 COLVILLE 1 ** (R&R - BACK 8/9)		08/22	PHILLIP MCLAUGHLIN	20	ICP/0600	ICP/1800
E-7 ENG6 OREGON WOODS, INC.		08/19	BEN COOK	3	ICP/0600	ICP/1800
E-135 ENG3 WILDFIRE SUPPORT 316 **		08/08	JOEY DEMARTINO	3	ICP/0600	ICP/1800
E-161 ENG4 AAA THUNDERBOLT **		08/08	MONTIE REYNOLDS	3	ICP/0600	ICP/1800
E-228 ENG4 WOODPECKER 5 **		08/11	JOSEPH BOIANOFF	3	ICP/0600	ICP/1800
E-17 WTS2 FYR FLY LTD #68		08/19	LINN LAMB	1	ICP/0600	ICP/1800
E-18 WTS2 PORTABLE ROCK		08/19	JIMMY POWELL	1	ICP/0600	ICP/1800
E-19 WTS2 BOMBEROS WATER LLC		08/19	KURT FIGG-HOBLYN	1	ICP/0600	ICP/1800
E-54 WTT2 BOULDER CREEK **		08/11	JOE SCHOENMAKERS	1	ICP/0600	ICP/1800
E-194 WTT2 OWENS **		08/12	FRANKLIN OWENS	1	ICP/0600	ICP/1800
E-2 DOZ2 SILVER-NICKEL LOGGING LLC		08/19	TOBY EPPERSON	2	ICP/0600	ICP/1800
E-5000 DOZ2 SPOKANE CO 9		08/20	MIKE WOLF	1	ICP/0600	ICP/1800
8. Division/Group Communication Summary						
Function	Channel	RX Frequency N/W	RX Tone/NAC	TX Frequency N/W	TX Tone/NAC	Mode
TACTICAL	1	168.0500	146.2	168.0500	146.2	A
COMMAND	7	173.9250	146.2	169.8375	146.2	A
COMMAND	9	169.7250	88.5	164.2500	100.0	A
AIR TO GROUND	14	171.8625		171.8625		A
9. Prepared By (Resource Unit Leader)			Approved By (Planning Section Chief)		Date	Time
NATHAN JEFFRIES			HOWARD JOHNSON		08/07/2021	1600

Division/Group Assignment List (ICS 204 WF)
Controlled Unclassified Information//Basic

1. Incident Name:			3.			
WHITMORE			Branch:		Division/Group	
2. Operational Period: DAY / NIGHT					A/K	
Date/Time From: 08/08/2021 0600 SUN		Date/Time To: 08/09/2021 0600 MON				
4. Operations Personnel						
OPERATIONS CHIEF		MATT CASTLE; KURT RANTA (T) TONY ENGEL; JEFF BOUSCHOR		DIVISION/GROUP SUPERVISOR		JEROMY WILSON JAMES DICKINSON (T)
SAFETY OFFICER		TROY CORN; JACK CATES DON WALLER (T)		AIR OPERATIONS BRANCH DIRECTOR		PAUL BALFOUR
5. Resources Assigned this Period						
Strike Team / Task Force / Resource Designator		LWD	Leader	Number Persons	Drop Off PT./Time	Pick Up PT./Time
O-43 REMS9 SCFD9		08/19	CLINT JUNTUNEN	4	ICP/0600	ICP/1800
O-37 EMPF MEDIC2		08/21	JENNEL SMITH	1	ICP/0600	ICP/1800
6. Control Operations/Work Assignments:						
<p><u>Div A</u> TASK - Secure fire East of Columbia River Road, South of Omak Lake to Division break. Provide for Structure Protection on Columbia River Road, Kartar Valley and Omak Lake road. PURPOSE - Protect property and resources; limit further fire spread to the West. END STATE - Fire is contained south of Omak Lake and East of Columbia River road and structures are not threatened.</p> <p><u>Div K</u> TASK - Scout and establish fireline east of Peter Flat and Dan Nason Basin PURPOSE - Protect property and resources; limit further fire spread to the West. END STATE - Fireline is established and secured and fire is contained East of Peter Flat and Dan Nason Basin.</p>						
7. Special Instructions:						
** Resource is assigned to the Summit Trail fire and is on loan to Whitmore fire.						
8. Division/Group Communication Summary						
Function	Channel	RX Frequency N/W	RX Tone/NAC	TX Frequency N/W	TX Tone/NAC	Mode
TACTICAL	1	168.0500	146.2	168.0500	146.2	A
COMMAND	7	173.9250	146.2	169.8375	146.2	A
COMMAND	9	169.7250	88.5	164.2500	100.0	A
AIR TO GROUND	14	171.8625		171.8625		A
9. Prepared By (Resource Unit Leader)			Approved By (Planning Section Chief)		Date	Time
NATHAN JEFFRIES			HOWARD JOHNSON		08/07/2021	1600

Division/Group Assignment List (ICS 204 WF)

Controlled Unclassified Information//Basic

1. Incident Name:			3.			
WHITMORE			Branch:	Division/Group L		
2. Operational Period: DAY / NIGHT						
Date/Time From: 08/08/2021 0600	SUN	Date/Time To: 08/09/2021 0600	MON			
4. Operations Personnel						
OPERATIONS CHIEF		MATT CASTLE; KURT RANTA (T) TONY ENGEL; JEFF BOUSCHOR	DIVISION/GROUP SUPERVISOR			
SAFETY OFFICER		TROY CORN; JACK CATES DON WALLER (T)	AIR OPERATIONS BRANCH DIRECTOR		PAUL BALFOUR	
5. Resources Assigned this Period						
Strike Team / Task Force / Resource Designator	LWD	Leader	Number Persons	Drop Off PT./Time	Pick Up PT./Time	
6. Control Operations/Work Assignments:						
<p>TASK - Scout and establish firelines to keep fire South of Highway 155. PURPOSE - Protect property and resources; limit further fire spread to the North. END STATE - Fireline is established and secured and fire is contained South of Highway 155.</p>						
7. Special Instructions:						
8. Division/Group Communication Summary						
Function	Channel	RX Frequency N/W	RX Tone/NAC	TX Frequency N/W	TX Tone/NAC	Mode
TACTICAL	2	168.2000	146.2	168.2000	146.2	A
COMMAND	7	173.9250	146.2	169.8375	146.2	A
COMMAND	9	169.7250	88.5	164.2500	100.0	A
AIR TO GROUND	14	171.8625		171.8625		A
9. Prepared By (Resource Unit Leader)			Approved By (Planning Section Chief)		Date	Time
NATHAN JEFFRIES			HOWARD JOHNSON		08/07/2021	1600

Division/Group Assignment List (ICS 204 WF)
Controlled Unclassified Information//Basic

1. Incident Name:			3.			
WHITMORE			Branch:		Division/Group	
2. Operational Period: DAY / NIGHT					M/P	
Date/Time From: 08/08/2021 0600 SUN		Date/Time To: 08/09/2021 0600 MON				
4. Operations Personnel						
OPERATIONS CHIEF		MATT CASTLE; KURT RANTA (T) TONY ENGEL; JEFF BOUSCHOR		DIVISION/GROUP SUPERVISOR		MIKE JACKSON SAM STEINSHOUER (T)
SAFETY OFFICER		TROY CORN; JACK CATES DON WALLER (T)		AIR OPERATIONS BRANCH DIRECTOR		PAUL BALFOUR
5. Resources Assigned this Period						
Strike Team / Task Force / Resource Designator		LWD	Leader	Number Persons	Drop Off PT./Time	Pick Up PT./Time
O-1.63 SOF2		08/19	JOHN BARNES	1	ICP/0600	ICP/1800
O-9 FALM SWEDBERG CONTR **		08/16	JEFALD WULFF	2	ICP/0600	ICP/1800
C-50 HC2 PACIFIC COAST **		08/13	NORBERTO PANTELEON	20	ICP/0600	ICP/1800
E-131 ENG6 CHAFFEE CO FPD		08/08	BRIAN WELCH	3	ICP/0600	ICP/1800
E-132 ENG6 WEST METRO BR 4 **		08/08	SHANE EROSKY	3	ICP/0600	ICP/1800
E-305 ENG6 MID-COLUMBIA RESOURCES LLC **		08/17	DAVID JOHNSON	3	ICP/0600	ICP/1800
E-27 WTS2 IA CONSTRUCTION & FIRE **		08/13	TERRY BURR	1	ICP/0600	ICP/1800
E-54 WTS2 BOULDER CREEK **		08/11	JOE SCHOENMAKERS	1	ICP/0600	ICP/1800
E-76 DOZ3 BIA ROADS			JIM PHILLIPS	2	ICP/0600	ICP/1800
E-1 DOZ3 TUNK CREEK LLC **		08/13	DARREL GREEN	2	ICP/0600	ICP/1800
E-79 DOZ2 COUGAR RIDGE **		08/24	DAVE OAKES	2	ICP/0600	ICP/1800
O-36 EMPF MEDIC3		08/21	ROBERT SMITH	1	ICP/0600	ICP/1800
O-62 EMPF MEDIC1		08/20	JOHN LIPSKER	1	ICP/0600	ICP/1800
E-67 AMBU 2 (BLS) LINCOLN COUNTY		08/21	CORREY KRAIS	2	ICP/0600	ICP/1800
8. Division/Group Communication Summary						
Function	Channel	RX Frequency N/W	RX Tone/NAC	TX Frequency N/W	TX Tone/NAC	Mode
TACTICAL	5	166.7750	146.2	166.7750	146.2	A
COMMAND	7	173.9250	146.2	169.8375	146.2	A
COMMAND	9	169.7250	88.5	164.2500	100.0	A
AIR TO GROUND	14	171.8625		171.8625		A
9. Prepared By (Resource Unit Leader)			Approved By (Planning Section Chief)		Date	Time
NATHAN JEFFRIES			HOWARD JOHNSON		08/07/2021	1600

Division/Group Assignment List (ICS 204 WF)
Controlled Unclassified Information//Basic

1. Incident Name:			3.			
WHITMORE			Branch:		Division/Group	
2. Operational Period: DAY / NIGHT					M/P	
Date/Time From: 08/08/2021 0600 SUN		Date/Time To: 08/09/2021 0600 MON				
4. Operations Personnel						
OPERATIONS CHIEF		MATT CASTLE; KURT RANTA (T) TONY ENGEL; JEFF BOUSCHOR		DIVISION/GROUP SUPERVISOR		MIKE JACKSON SAM STEINSHOUER (T)
SAFETY OFFICER		TROY CORN; JACK CATES DON WALLER (T)		AIR OPERATIONS BRANCH DIRECTOR		PAUL BALFOUR
5. Resources Assigned this Period						
Strike Team / Task Force / Resource Designator		LWD	Leader	Number Persons	Drop Off PT./Time	Pick Up PT./Time
6. Control Operations/Work Assignments:						
<p><u>Div M</u> TASK - Anchor and flank fire west of Lower Coyote Creek Road north from Colombia River Road and division M/P break PURPOSE - Protect property and natural resources east of Lower Coyote Creek Road. END STATE - Fire is contained south of Coyote Creek Road. Structures south of the fire area are not threatened.</p> <p><u>Div P</u> TASK - Anchor and flank fire from DIVS M/P break north of Hamilton Ridge Road. PURPOSE - Protect property and resources west of Hamilton Ridge Road. END STATE - Fire is contained west of Hamilton Ridge Road and north of Columbia River Road. Structures south of the incident area are secure.</p>						
7. Special Instructions:						
<p>** Resource is assigned to the Summit Trail fire and is on loan to Whitmore fire.</p> <p>Protect cultural resources; contact resource advisor as needed.</p>						
8. Division/Group Communication Summary						
Function	Channel	RX Frequency N/W	RX Tone/NAC	TX Frequency N/W	TX Tone/NAC	Mode
TACTICAL	5	166.7750	146.2	166.7750	146.2	A
COMMAND	7	173.9250	146.2	169.8375	146.2	A
COMMAND	9	169.7250	88.5	164.2500	100.0	A
AIR TO GROUND	14	171.8625		171.8625		A
9. Prepared By (Resource Unit Leader)			Approved By (Planning Section Chief)		Date	Time
NATHAN JEFFRIES			HOWARD JOHNSON		08/07/2021	1600

Division/Group Assignment List (ICS 204 WF)
Controlled Unclassified Information//Basic

1. Incident Name:			3.			
WHITMORE			Branch:		Division/Group	
2. Operational Period: DAY / NIGHT					W/Z	
Date/Time From: 08/08/2021 0600 SUN		Date/Time To: 08/09/2021 0600 MON				
4. Operations Personnel						
OPERATIONS CHIEF		MATT CASTLE; KURT RANTA (T) TONY ENGEL; JEFF BOUSCHOR		DIVISION/GROUP SUPERVISOR		NIKIA HERNANDEZ
SAFETY OFFICER		TROY CORN; JACK CATES DON WALLER (T)		AIR OPERATIONS BRANCH DIRECTOR		PAUL BALFOUR
5. Resources Assigned this Period						
Strike Team / Task Force / Resource Designator		LWD	Leader	Number Persons	Drop Off PT./Time	Pick Up PT./Time
O-1.61 SOF2		08/20	JOSH NORTHRUP	1	ICP/0600	ICP/1800
C-1 HC2 GRIZZLY - RED CREW		08/21	KARLA BEJAR	20	ICP/0600	ICP/1800
C-3 HC2I MISSOURI 4		08/21	TIMOTHY PERREN	20	ICP/0600	ICP/1800
E-316 ENGG6 AAA THUNDERBOLT **		08/18	TOBY YAZZIE	2	ICP/0600	ICP/1800
SOUTH PUGET SOUND STRIKE TEAM						
O-2109 STEN		08/20	ERIK HOTCHKISS	1	ICP/0600	ICP/1800
E-2110 ENG PIERCE CO FD 13 BR-76		08/20	DYLAN TAPIA	3	ICP/0600	ICP/1800
E-2111 ENG NORTH MASON RFA BR-21		08/20	LINDSAY CHAFFEE	3	ICP/0600	ICP/1800
E-2112 ENG MASON CO FD 4		08/20	MARK FRAZIER	3	ICP/0600	ICP/1800
E-2113 ENG WEST MASON FIRE BR16-1		08/20	CHRIS DECAUPA	3	ICP/0600	ICP/1800
E-2114 ENG6 KING FO FD 45 8714		08/20	CONNOR CHESS	3	ICP/0600	ICP/1800
E-2115 WT KING CO FD 45 T-166		08/20	ROBERT LEE	1	ICP/0600	ICP/1800
E-5 AMBU 1 (ALS) MED TRANSPORT		08/21	JENNIFER BOSTWICK	2	ICP/0600	ICP/1800
8. Division/Group Communication Summary						
Function	Channel	RX Frequency N/W	RX Tone/NAC	TX Frequency N/W	TX Tone/NAC	Mode
TACTICAL	3	168.6000	146.2	168.6000	146.2	A
COMMAND	7	173.9250	146.2	169.8375	146.2	A
COMMAND	9	169.7250	88.5	164.2500	100.0	A
AIR TO GROUND	14	171.8625		171.8625		A
9. Prepared By (Resource Unit Leader)			Approved By (Planning Section Chief)		Date	Time
NATHAN JEFFRIES			HOWARD JOHNSON		08/07/2021	1600

Division/Group Assignment List (ICS 204 WF)
Controlled Unclassified Information//Basic

1. Incident Name:		3.				
WHITMORE		Branch:		Division/Group		
2. Operational Period:		W/Z				
DAY / NIGHT						
Date/Time From:	Date/Time To:					
08/08/2021 0600 SUN	08/09/2021 0600 MON					
4. Operations Personnel						
OPERATIONS CHIEF	MATT CASTLE; KURT RANTA (T) TONY ENGEL; JEFF BOUSCHOR	DIVISION/GROUP SUPERVISOR		NIKIA HERNANDEZ		
SAFETY OFFICER	TROY CORN; JACK CATES DON WALLER (T)	AIR OPERATIONS BRANCH DIRECTOR		PAUL BALFOUR		
5. Resources Assigned this Period						
Strike Team / Task Force / Resource Designator	LWD	Leader	Number Persons	Drop Off PT./Time	Pick Up PT./Time	
6. Control Operations/Work Assignments:						
<p><u>Div W</u> TASK - Secure Fire north of the Columbia River, provide for structure protection for structures along Columbia River road. PURPOSE - Protect property and infrastructure and prevent additional fire spread to the South END STATE - Fire is contained north of the Columbia River with no additional structure damage.</p> <p><u>Div Z</u> TASK - Secure fire perimeter north of Columbia River Road. Burn out as needed. PURPOSE - Protect natural resources and property southeast of the fire. END STATE - The fire is contained east of Columbia River Road.</p>						
7. Special Instructions:						
** Resource is assigned to the Summit Trail fire and is on loan to Whitmore fire.						
8. Division/Group Communication Summary						
Function	Channel	RX Frequency N/W	RX Tone/NAC	TX Frequency N/W	TX Tone/NAC	Mode
TACTICAL	3	168.6000	146.2	168.6000	146.2	A
COMMAND	7	173.9250	146.2	169.8375	146.2	A
COMMAND	9	169.7250	88.5	164.2500	100.0	A
AIR TO GROUND	14	171.8625		171.8625		A
9. Prepared By (Resource Unit Leader)		Approved By (Planning Section Chief)		Date	Time	
NATHAN JEFFRIES		HOWARD JOHNSON		08/07/2021	1600	

Division/Group Assignment List (ICS 204 WF)
Controlled Unclassified Information//Basic

1. Incident Name:			3.			
WHITMORE			Branch:		Division/Group	
2. Operational Period: DAY / NIGHT					NIGHT	
Date/Time From: 08/08/2021 0600 SUN		Date/Time To: 08/09/2021 0600 MON				
4. Operations Personnel						
OPERATIONS CHIEF		MATT CASTLE; KURT RANTA (T) TONY ENGEL; JEFF BOUSCHOR		DIVISION/GROUP SUPERVISOR		JEFF PRICHER
SAFETY OFFICER		TROY CORN; JACK CATES DON WALLER (T)		AIR OPERATIONS BRANCH DIRECTOR		PAUL BALFOUR
5. Resources Assigned this Period						
Strike Team / Task Force / Resource Designator		LWD	Leader	Number Persons	Drop Off PT./Time	Pick Up PT./Time
O-76 SOF2		08/21	RICHARD MCCONNELL	1	ICP/1800	ICP/0600
E-9 ENG6 AAA FORESTRY		08/20	CHRIS MARTIN	3	ICP/1800	ICP/0600
E-317 ENG6 AQUA FORCE **		08/18	JASON PHILLIPS	2	ICP/1800	ICP/0600
GRANT COUNTY STRIKE TEAM						
O-2101 STEN		08/19	TRAVIS SVILAR	1	ICP/1800	ICP/0600
O-2108 STEN(T)		08/19	SHAWN SHERMAN	1	ICP/1800	ICP/0600
E-2102 ENG4 EPHRATA FD B-2122		08/19	MIKE STUSSY	2	ICP/1800	ICP/0600
E-2103 ENG3 GRANT CO 5 585		08/19	SAM HOCHSTATTER	3	ICP/1800	ICP/0600
E-2104 ENG GRANT CO 6		08/19	DARYL DORMAIER	2	ICP/1800	ICP/0600
E-2105 ENG6 GRANT CO 12 B-1216		08/19	MARK BISE	2	ICP/1800	ICP/0600
E-2106 ENG5 DOUGLAS CO 15 B-1523		08/19	JEFF ZAHN	4	ICP/1800	ICP/0600
E-2107 WTS2 MOSES LAKE FIRE T-1		08/19	BRANDON BURNS	2	ICP/1800	ICP/0600
E-196 WTS2 SUNDANCE 204 **		08/12	RODNEY FAY	1	ICP/1800	ICP/0600
6. Control Operations/Work Assignments:						
TASK: Patrol and secure structures as needed.						
PURPOSE: Reduce risk to property.						
END STATE: Fire is no longer threat to structures.						
7. Special Instructions:						
** Resource is assigned to the Summit Trail fire and is on loan to Whitmore fire.						
8. Division/Group Communication Summary						
Function	Channel	RX Frequency N/W	RX Tone/NAC	TX Frequency N/W	TX Tone/NAC	Mode
TACTICAL	6	168.2500	146.2	168.2500	146.2	A
COMMAND	7	173.9250	146.2	169.8375	146.2	A
COMMAND	9	169.7250	88.5	164.2500	100.0	A
AIR TO GROUND	14	171.8625		171.8625		A
9. Prepared By (Resource Unit Leader)			Approved By (Planning Section Chief)		Date	Time
NATHAN JEFFRIES			HOWARD JOHNSON		08/07/2021	1600

AIR OPERATIONS SUMMARY

PREPARED BY: Paul Balfour

PREPARED DATE/TIME: August 7, 2021 1800hrs

INCIDENT NAME: WHITMORE	2. OPERATIONAL PERIOD: Date: 8/8/2021 Helibase Start Time: 0830 End Time: 2030 Sunrise: 0539 Sunset: 2023 (Times valid for Nespelem)
--	---

3. REMARKS (Safety Notes, Hazards, Air Operations Special Equipment, etc.): General Aviation, See & Avoid Bucket work, Retardant drops: ensure area is clear of ground personnel before dropping; watch for wires; be aware of potential for turbulence at ridge tops, saddles, canyons, etc *** BE AWARE OF FATIGUE, TAKE LONGER BREAKS WHEN FLYING IN SMOKEY CONDITIONS. *** Report all TFR intrusions to Air Operations, Air Support or Helibase as soon as possible.	4. MEDEVAC A/C: Contact Mt Tolman Fire Center 509-634-310 N125CL Short Haul PSICC 425-783-6150	5. TFR #1/1705 7nm 6500msl 124.225 (A5)
---	--	--

PERSONNEL	Phone	7. FREQUENCIES	AM	FM	8. FIXED-WING	# Avail / Type/ Make-Model / FAA N# / Base(s)
AOBD: Paul Balfour O-1.40	509-993-8739	AIR/AIR Primary (A5)	124.225		Fixed Wing/Buckets	DIVS order thru ATGS if up, or Whitmore Communications
ASGS: Tim Lyda O-1.41	206-473-8560	AIR/AIR Secondary (A16)	134.050			
HEBM:		AIR/GROUND Primary (A-17)		171.8625	ATGS Aircraft	AA Mike Stout O-47 Kodiak N420Q (A20) LATs Order through Air Attack/AOBD Mt Tolman Dispatch
HEMG:		AIR/GROUND Secondary		156.0225 T-103.5		
ATGS: Mike Stout O-47	208-304-4237	Air Keller Flt Flw		Rx172.775 T-156.7		
ATGS:				Tx166.325 T-123.0	NOTES:	Whitmore Helibase: N48 08 75 Elevation 1769 W118 59 00
Mt Tolman:	509-634-3100	Air/Grnd 03 IA		166.6125		
Debbie Coudell	509-570-4133	A/G DNR IA		159.270 T-103.5		
Michelle	509-675-0675					email costs to timlyda22@gmail.com

9. HELICOPTERS

FAA N#	TY	MAKE/MODEL	BASE	START	AVAIL	REMARKS	FAA N#	TY	MAKE/MODEL	BASE	START	AVAIL	REMARKS

INCIDENT RADIO COMMUNICATIONS PLAN (ICS 205)

Controlled Unclassified Information//Basic

1. Incident Name:	2. Date/Time Prepared:	3. Operational Period: DAY / NIGHT	
WHITMORE	Date: 08/07/2021 Time: 1535	Date/Time From: 08/08/2021 0600 SUN	Date/Time To: 08/09/2021 0600 MON

4. Basic Radio Channel Use:

Zone Group	Ch #	Function	Channel Name/Trunked Radio System Talkgroup	Assignment	RX Freq	RX Tone/NAC	TX Freq	TX Tone/NAC	Mode (A,D, or M)	Remarks
	1	TACTICAL	TAC 1	DIV A / K	168.0500	146.2	168.0500	146.2	A	
	2	TACTICAL	TAC 2	DIV L	168.2000	146.2	168.2000	146.2	A	
	3	TACTICAL	TAC 3	DIV W / Z	168.6000	146.2	168.6000	146.2	A	
	4	TACTICAL	TAC 4		166.7250	146.2	166.7250	146.2	A	
	5	TACTICAL	TAC 5	DIV M / P	166.7750	146.2	166.7750	146.2	A	
	6	TACTICAL	TAC 6	NIGHT	168.2500	146.2	168.2500	146.2	A	
	7	COMMAND	CMD 7	EAST SIDE OF FIRE	173.9250	146.2	169.8375	146.2	A	ARMSTRONG LO
	8	COMMAND	CMD 8	RESERVED	159.4275	192.8	151.2725	192.8	A	NOT IN SERVICE
	9	COMMAND	CMD 9	ALL DIVS	169.7250	88.5	164.2500	100.0	A	FIRE A-MOSES MTN
	10	COMMAND	MOSES	IA	169.7125	136.5	164.1625	100.0	A	FIRE B-MOSES MTN-IA ONLY
	11	TACTICAL	WA REDNET	IA	153.8300		153.8300		A	IA ONLY
	12	TACTICAL	C TAC	IA	166.9750	151.4	166.9750	151.4	A	IA ONLY
	13	AIR TO GROUND	ATG 03	IA	166.6125		166.6125		A	IA ONLY
	14	AIR TO GROUND	A/G PRI	PRIMARY	171.8625		171.8625		A	AIR TO GROUND PRIMARY
	15	AIR TO GROUND	A/G SEC	SECONDARY	156.0225	103.5	156.0225	103.5	A	LOW POWER ONLY
	16	AIR GUARD	AIRGUARD	AIRGUARD	168.6250		168.6250	110.9	A	EMERGENCY AIR ONLY

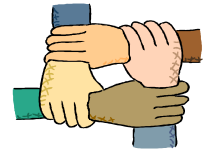
5. Special Instructions:

6. Prepared By (Communications Unit Leader)	Name: MISSY PARKER	Signature: <i>Missy Parker</i>
ICS 205	IAP Page	Date/Time: 08/07/2021 1535

Controlled Unclassified Information//Basic



Human Resource Message



**Whitmore Fire
August 8-9, 2021 0600-0600**

Fit for Duty:

Per OSHA, fit for duty means that an individual is in a physical, mental, and emotional state which enables the employee to perform the essential tasks of his or her work assignment in a manner which does not threaten the safety or health of oneself, co-workers, property, or the public at large.

We are still in Preparedness Level 5 and with the weather conditions as such, we may be at Level 5 for another few weeks. Taking care of yourself is critical for your well being and the well being of others and that is why knowing that you are fit for duty is important. Take breaks throughout the day, hydrate, eat healthy and stay in touch with family.

NW Team 12 is here for your support so please do not hesitate to reach out to any team member or Human Resources for that support.

QUIET TIME: 2200 to 0600: If returning to the ICP after 2200, please respect people are trying to sleep. Voices carry at night and folks in their tents can hear you talking. With neighborhood dogs barking, back up buzzers going off, and people carrying on conversations, sleep is disturbed.

LOST and FOUND: Check the Lost and Found box located at the check-in table in the front of the ICP.

Mail: Public Information Officer will announce receipt of mail at the morning briefing.



Keep up the good work everyone. Your hard work is appreciated!

Susie Manezes, NW-Team 12- (HRSP) Contact Number: 602-571-9327 (Call or Text)

Logistics Message

Batterman Road Fire

Supply Hours

Cache 0530 to 1930

Ordering 0600 to 2200

Ground Support

0600 to 2200

Kitchen Hours

Dinner 1700 to 2200

Shower Trailer Hours

0500-1200

1200-1400 Closed for Cleaning

1400-2200



Whitmore Fire Finance

FSC2 – Cheri Fuller, FSC2 (T) Christina Goebel

Email : 2021.whitmore.finance@firenet.gov

Phone: 425-495-3420

Hours of operation 0530 – 2200

There is a box located outside of the ICP where CTRs and Shift Tickets can be left. If you have questions and need to talk to anyone in finance, please call the number above. You can also email us at the email.

Personal Time – Carol Long or Frances Tobia

Equipment Time & VIPR – Mark Bohnet or Todd Powell

Please remember to do your part and helping us, by turning in your time.

There are 2 fires that we are working so please make sure to put in the remarks what fire you are on.



Pro Tip: Map Download

How to resolve troubles with downloading maps into Avenza.

Note: These directions were written for Apple, but the steps are roughly the same for Android.

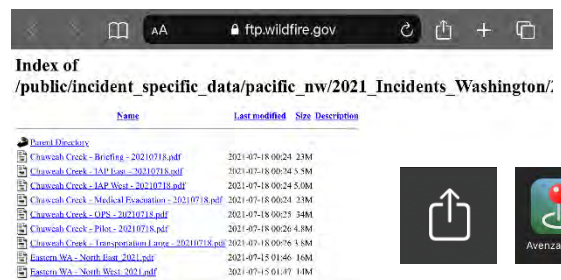
Start Here:

1. Connect to Wi-Fi as the local area's cellular network is not fast enough for large file downloads. This may result in a browser timeout and error message about the map not being able to download to be displayed. The Community Center has a guest Wi-Fi that can be utilized.
2. For either method below, **START BY SCANNING THE QR CODE** on the front of the IAP to get to the FTP site and 'Current_Maps' folder.



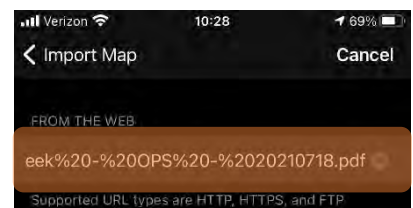
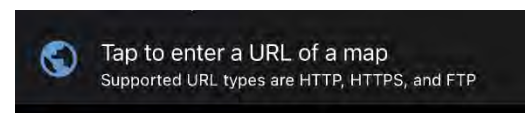
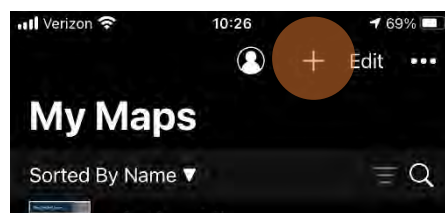
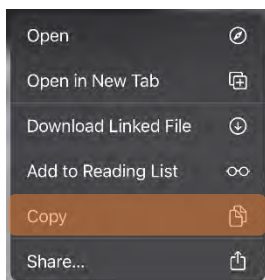
Method 1: From a browser

1. Tap on the desired map link and wait for the preview.
** If it fails to load, use method 2 instead*
2. Tap the 'send to' icon (square with up arrow)
3. Choose the Avenza app



Method 2: From Avenza direct

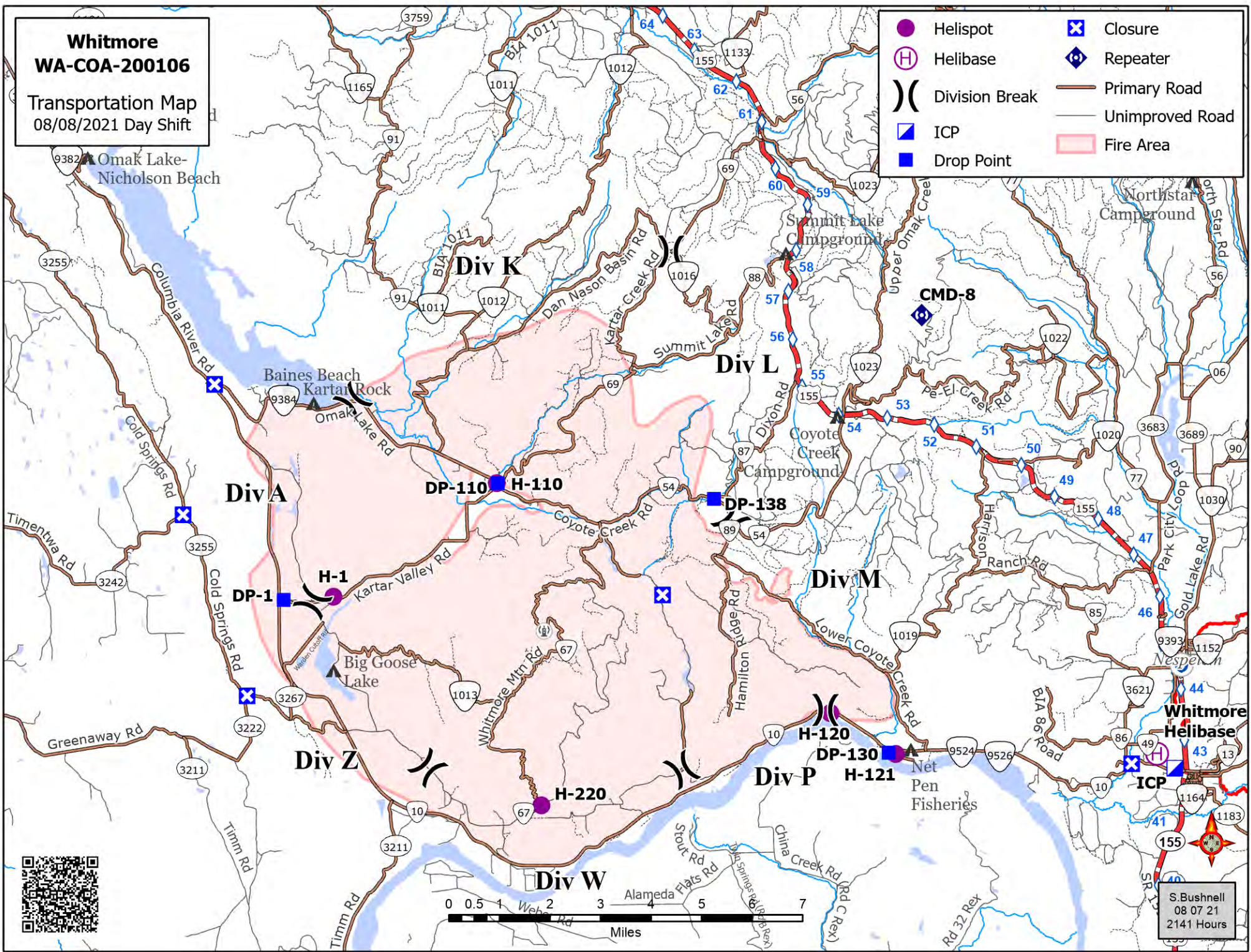
1. Tap and hold on the desired map link, then choose 'copy' to copy the direct URL to the map
2. Launch the Avenza app
3. When not in any map... Tap the + (plus) icon at the top of the screen
4. Choose the load from URL option (last choice)
5. Paste the direct URL to the map
6. Tap 'Done' ; the map will begin downloading



**Whitmore
WA-COA-200106**

Transportation Map
08/08/2021 Day Shift

- Helispot
- Ⓜ Helibase
-) Division Break
- ▢ ICP
- Drop Point
- ⊠ Closure
- Ⓜ Repeater
- Primary Road
- Unimproved Road
- Fire Area



S. Bushnell
08 07 21
2141 Hours

WHITMORE COVID-19 MITIGATIONS:

Supervisors are required to go over this list each morning with assigned resources

In the last 24 hours have you experienced:

Symptom
Cough more than expected?
Shortness of breath or difficulty breathing?
Fever? Chills?
Muscle pain, outside your normal for firefighting?
Sore throat?
New loss of taste or smell?
Fatigue, outside your normal for firefighting?
Headache, outside your normal for firefighting?
Congestion or runny nose, outside your normal for firefighting?
Nausea or vomiting
Diarrhea
<i>* Take temperature with no-touch thermometer, if available *</i>

- **Wear a mask in fire camp regardless of vaccination status, unless outdoors and able to maintain at least 6ft of distance at all times, alone in an enclosed space or actively engaged in firefighting on the fireline.**
- **Use the Zoom link provided to join briefings remotely.**
- **Observe 6ft Distancing whenever possible.**
- **Conduct daily verbal screening checks within crews, report any COVID-like symptoms to your direct supervisor. Supervisors should report any positive symptoms to the Medical Unit for next steps.**
- **Observe “Module as One” practices – the only close contact you should have is with the crew (engine, handcrew, etc.) that you live and work with all summer. Observe social distancing and masking around everyone else. Do not co-mingle with other crews or “modules” in camp or on the line.**
- **Send crew representatives to pick up meals.**
- **No entry to ICP building except Incident Management Team members**
- **Wash hands frequently and disinfect high-traffic areas on a regular basis.**
- **Limit close contact between firefighters and the public to prevent exposure and spread.**

EMERGENCY PLAN

INCIDENT WITHIN AN INCIDENT

ON SCENE SUPERVISOR

In the event of an accident or medical incident of any size, your primary responsibility is to ENSURE that the victim(s) receive prompt and effective Triage, Treatment and Transportation.

- Conduct size-up of the incident (nature of accident, number type of resources involved, latitude and longitude location): notify incident communications center and supervisor, request assistance as needed.
- Order and coordinate medical and support response to the accident.
- Evaluate special needs (law enforcement, haz mat, etc.).
- Clear the command frequency if medical emergency; coordinate with incident communications and air attack for air medical transportation needs
- Preserve and photograph the scene for accident investigation.
- Remain aware of surroundings and the status of the main incident (delegate personnel to monitor the main fire) to ensure safety of medical treatment personnel.
- Until relieved, supervise and manage all personnel involved at the incident scene.
- **ENSURE THE MEDICAL INCIDENT REPORT IN THE INCIDENT ACTION PLAN IS BEING USED AND FOLLOWED.**

MEDICAL PLAN (ICS 206 WF)

20 Incident/Project Name		1. Operational Period				
Whitmore Fire		Date/Time 8/08/2021 0600-1900				
2. Ambulance Services						
Name	Complete Address	Phone		Advanced Life Support (ALS) Yes No		
Colville Tribal EMS Nespelem, WA	410 10 th St. Nespelem, WA 99155	911 - Dispatch 509-634-2472 509-978-9323			x	
Lifeline Ambulance	912 Koala Ave Omak, WA 98841	911 - Dispatch 509-663-8091		x		
3. Air Ambulance Services						
Name	Phone	Type of Aircraft & Capability				
Airlift Northwest	800-426-2430 or 911	Rotor in Wenatchee				
Life Flight Network	800-232-0911	2 Rotors, 1 Fixed Wing, Spokane				
4. Hospitals						
Name Complete Address	GPS Datum – WGS 84 Coordinate Standard Degrees Decimal Minutes DD° MM.MMM' N - Lat DD° MM.MMM' W - Long	Travel Time From ICP Air Gnd		Phone	Helipad Yes No	Level of Care Facility
Coulee Medical Center 411 Fortuyn Rd Grand Coulee, WA 99133	Lat: 44°56.5186' N	20 Min	40 Min	509-633-1753	x	Level 4 Trauma
	Long: 119°0.4333' W					
	VHF:					
Mid-Valley Hospital 912 Koala Ave Omak, WA 98841	Lat: 48°23.8336' N	40 Min	1Hr 14 min	509-826-1760	x	Level 4 Trauma
	Long: 119°32.8758' W					
	VHF:					
Confluence Health Hospital (Central Washington Hospital) 1201 S Miller St. Wenatchee, WA 98801	Lat: 47°24.4340' N	1Hr 10 Min	2 Hr 30 Min	509-662-1511	x	Level 2 Trauma
	Long: 120°19.3664' W					
	VHF :					
Harborview Medical 325 9 th Ave Seattle, WA 98104	Lat: 47°36.1897' N	2 Hr 15 Min	4 Hr 30 Min	541-222-6929	x	Level 1 Trauma Burn Center
	Long: 122°19.4759' W					
	VHF:					
5. Division Branch Group		Capability		Personnel		
Div A/K		REM 9 0-43		Medic 2 Jennel Smith O-36		
Div W/Z		Ambo 1 (ALS) E-5				
Div M/P		Medic 1 Lipsker 0-62	Ambo 2 (BLS) E-67	Medic 3 Justin Smith O-37		
Div L		Unstaffed				
Night Shift		Unstaffed				
6. Prepared By (Medical Unit Leader)		7. Date/Time		8. Reviewed By (Safety Officer)		9. Date/Time
Eamonn Ryan, Diana Braun, Lee Venning (T)		08/07/2021 1800				08/07/2021 1800

MEDICAL PLAN (ICS 206 WF)

Controlled Unclassified Information//Basic

Medical Incident Report

FOR A NON-EMERGENCY INCIDENT, WORK THROUGH CHAIN OF COMMAND TO REPORT AND TRANSPORT INJURED PERSONNEL AS NECESSARY.

FOR A MEDICAL EMERGENCY: IDENTIFY ON SCENE INCIDENT COMMANDER BY NAME AND POSITION AND ANNOUNCE "MEDICAL EMERGENCY" TO INITIATE RESPONSE FROM IMT COMMUNICATIONS/DISPATCH.

Use the following items to communicate situation to communications/dispatch.

1. CONTACT COMMUNICATIONS / DISPATCH (**Verify correct frequency prior to starting report**)

Ex: "Communications, Div. Alpha. Stand-by for Emergency Traffic."

2. INCIDENT STATUS: *Provide incident summary (including number of patients) and command structure.*

Ex: "Communications, I have a Red priority patient, unconscious, struck by a falling tree. Requesting air ambulance to Forest Road 1 at (Lat./Long.) This will be the Trout Meadow Medical, IC is TFLD Jones. EMT Smith is providing medical care."

Severity of Emergency / Transport Priority	<input type="checkbox"/> RED / PRIORITY 1 Life or limb threatening injury or illness. Evacuation need is IMMEDIATE <i>Ex: Unconscious, difficulty breathing, bleeding severely, 2° – 3° burns more than 4 palm sizes, heat stroke, disoriented.</i> <input type="checkbox"/> YELLOW / PRIORITY 2 Serious Injury or illness. Evacuation may be DELAYED if necessary. <i>Ex: Significant trauma, unable to walk, 2° – 3° burns not more than 1-3 palm sizes.</i> <input type="checkbox"/> GREEN / PRIORITY 3 Minor Injury or illness. Non-Emergency transport <i>Ex: Sprains, strains, minor heat-related illness.</i>	
Nature of Injury or Illness & Mechanism of Injury		<i>Brief Summary of Injury or Illness (Ex: Unconscious, Struck by Falling Tree)</i>
Transport Request		<i>Air Ambulance / Short Haul/Hoist Ground Ambulance / Other</i>
Patient Location		<i>Descriptive Location & Lat. / Long. (WGS84)</i>
Incident Name		<i>Geographic Name + "Medical" (Ex: Trout Meadow Medical)</i>
On-Scene Incident Commander		<i>Name of on-scene IC of Incident within an Incident (Ex: TFLD Jones)</i>
Patient Care		<i>Name of Care Provider (Ex: EMT Smith)</i>

3. INITIAL PATIENT ASSESSMENT: *Complete this section for each patient as applicable (start with the most severe patient)*

Patient Assessment: See IRPG page 106

Treatment:

4. TRANSPORT PLAN:

Evacuation Location (if different): *(Descriptive Location (drop point, intersection, etc.) or Lat. / Long.)* Patient's ETA to Evacuation Location:

Helispot / Extraction Site Size and Hazards:

5. ADDITIONAL RESOURCES / EQUIPMENT NEEDS:

Example: Paramedic/EMT, Crews, Immobilization Devices, AED, Oxygen, Trauma Bag, IV/Fluid(s), Splints, Rope rescue, Wheeled litter, HAZMAT, Extrication

6. COMMUNICATIONS: Identify State Air/Ground EMS Frequencies and Hospital Contacts as applicable

Function	Channel Name/Number	Receive (RX)	Tone/NAC *	Transmit (TX)	Tone/NAC *
COMMAND					
AIR-TO-GRND					
TACTICAL					

7. CONTINGENCY: **Considerations:** *If primary options fail, what actions can be implemented in conjunction with primary evacuation method? Be thinking ahead.*

8. ADDITIONAL INFORMATION: *Updates/Changes, etc.*

REMEMBER: Confirm ETA's of resources ordered. Act according to your level of training. Be Alert. Keep Calm. Think Clearly. Act Decisively.

Controlled Unclassified Information//Basic