

# Incident Action Plan WHITMORE FIRE

August 9/10, 2021

0600-1800 Day Operational Period  
1800-0600 Night Operational Period

## MORNING BRIEFING @ 0600

Morning briefing will be a ZOOM call, use the information below to connect:

Phone: 1-669-254-5252

Meeting ID: 160 329 1397

Passcode: 252064



SCAN QR code to JOIN VIA ZOOM



WA-COA-200106  
N7SC [P] (1522)  
221 KTO



DOWNLOAD  
IAP



SCAN TO  
CHECK IN



DOWNLOAD  
MAPS

<https://forms.office.com/g/agvAKcC86U>

## INCIDENT OBJECTIVES (ICS 202)

<b>1. Incident Name:</b>	<b>2. Operational Period: DAY / NIGHT</b>	
WHITMORE	Date/Time From: 08/09/2021 0600      MON	Date/Time To: 08/10/2021 0600      TUE
<b>3. Objective(s):</b>		
<p>Implement risk management practices for the safety of firefighters, other responders and the public as the first priority.</p> <p>Minimize impacts to private property, critical infrastructure, timber, cultural and natural resources including water, fish, wildlife, and range land.</p> <p>Maintain and strengthen community relationships and provide timely fire information to the public and cooperators.</p> <p>Establish and maintain all current COVID-19 mitigation protocols according to CDC and agency guidelines.</p>		
<b>4. Operational Period Command Emphasis:</b>		
Implement direct suppression tactics where safe to do so to minimize fire size, protect timber values and private property.		
<b>General Situational Awareness:</b>		
Monitor the weather conditions and base all actions on current and expected fire behavior.		
<b>5. Site Safety Plan Required?</b> Yes <input type="checkbox"/> No <input checked="" type="checkbox"/>		
<b>Approved Site Safety Plan(s) Located</b>		
<b>6. Incident Action Plan</b> (the items checked below are included in this Incident Action Plan):		
<input checked="" type="checkbox"/> ICS 202 <input checked="" type="checkbox"/> ICS 203 <input checked="" type="checkbox"/> ICS 204 <input checked="" type="checkbox"/> ICS 205 <input type="checkbox"/> ICS 205A <input checked="" type="checkbox"/> ICS 206	<input type="checkbox"/> ICS 207 <input type="checkbox"/> ICS 208 <input checked="" type="checkbox"/> ICS 220 <input checked="" type="checkbox"/> Map/Chart <input checked="" type="checkbox"/> Weather Forecast/Tides/Currents	<b>Other Attachments:</b> <input type="checkbox"/> _____ <input type="checkbox"/> _____ <input type="checkbox"/> _____ <input type="checkbox"/> _____
<b>7. Prepared by:</b> HOWARD JOHNSON      Position/Title:      PSC2	Signature: <i>Howard Johnson</i>	
<b>8. Approved by Incident Commander:</b>	Name:      BOBBY SHINDELAR	Signature: <i>Bobby Shindelar</i>
<b>ICS 202</b>	<b>IAP Page</b>	Date/Time:      08/08/2021 2000

## ORGANIZATION ASSIGNMENT LIST (ICS 203)

<b>1. Incident Name:</b>		<b>2. Operational Period: DAY / NIGHT</b>	
WHITMORE		Date/Time From: 08/09/2021 0600 MON	Date/Time To: 08/10/2021 0600 TUE
<b>3. Incident Commander(s) and Command Staff:</b>		COMMUNICATIONS UNIT	MISSY PARKER
IC/UC	BOBBY SHINDELAR	MEDICAL UNIT	EAMONN RYAN; DIANA BRAUN LEE VENNING (T)
DEPUTY		FOOD UNIT	ALEXANDER LILLA
SAFETY OFFICER	TROY CORN JACK CATES; DON WALLER (T)		
INFORMATION OFFICER	MARY BEAN ROLAND EMETAZ		
LIAISON OFFICER	SCOTT CRAWFORD		
HUMAN RESOURCE SPECIALIST	SUSIE MANEZES		
HEALTH LIAISON	LIV STECKER	<b>7. Operations Section:</b>	
		OPS SECTION CHIEF	MATT CASTLE KURT RANTA (T)
		PLANNING OPS	TONY ENGEL JEFF BOUSCHOR
<b>4. Agency/Organization Representative(s):</b>			
<b>Agency/Organization</b>	<b>Name</b>		
COLVILLE AGENCY	PHIL WAPATO		
DNR	PAT RYAN	DIVISION/GROUP	A/Z/W/P NIKIA HERNANDEZ
		DIVISION/GROUP	C/F JEROMY WILSON JAMES DICKINSON (T)
		DIVISION/GROUP	L BOB HINDS
<b>5. Planning Section:</b>		DIVISION/GROUP	M MIKE JACKSON SAM STEINSHOUER (T)
CHIEF	HOWARD JOHNSON JILL JOHNSON (T)	DIVISION/GROUP	STRUCTURE BRANDYN HARVEY
RESOURCES UNIT	NATHAN JEFFRIES (VIRTUAL)	DIVISION/GROUP	NIGHT SOUTH JEFF PRICHER
DOCUMENTATION UNIT		DIVISION/GROUP	NIGHT NORTH
SITUATION UNIT	DAVE WISCHER	<b>7b. Air Operations Branch:</b>	
DEMOBILIZATION UNIT	MIKE HESTON (VIRTUAL)	AIR OPS BRANCH DIRECTOR	PAUL BALFOUR
FIRE BEHAVIOR ANALYST	DON STRAND	AIR ATTACK SUPERVISOR	
GIS SPECIALIST	SHAWN BUSHNELL MIKE TONKEL (T)	AIR SUPPORT SUPERVISOR	TIM LYDA
TECHNOLOGY SUPPORT SPECIALIST	GEORGE JENKINS	AIR TANKER COORDINATOR	
INCIDENT METEOROLOGIST	BOB TOBIN		
		<b>8. Finance/Administration Section:</b>	
		CHIEF	CHERI FULLER CHRISTINA GOEBEL (T)
		TIME UNIT	CAROL LONG
<b>6. Logistics Section:</b>		COMPENSATION UNIT	CHERI FULLER
CHIEF	DAN SOPTICH	PROCUREMENT UNIT	MARK BOHNET
DEPUTY	KEVIN HAUGHTON	COST UNIT	KATHLEEN HIGH (VIRTUAL)
SUPPLY UNIT	JOHN KAUPA		
FACILITIES UNIT	KAREN ZIRKLE		
GROUND SUPPORT UNIT	DAVE HARSH		
<b>9. Prepared By:</b>	<b>Name:</b> JILL JOHNSON	<b>Position/Title:</b> PSC2 (T)	<b>Signature:</b> 
ICS 203	IAP Page	<b>Date/Time:</b> 08/08/2021 1450	

## Fire Weather Forecast

**FORECAST NO:** 5  
**PREDICTION FOR:** Monday-Monday night  
**Shift Date:** August 9-10, 2021 0600-0600  
**TIME AND DATE**  
**FORECAST ISSUED:** 8/8/2021 at 2000

**INCIDENT:** Whitmore Fire  
**UNIT:** Colville Reservation  
**SIGNED:** Bob Tobin  
**Incident Meteorologist (IMET)**

---

**Weather Discussion:** High pressure will slowly begin to build into the region today and strengthen through the week. This will result in a warming and drying trend. By Wednesday temperatures at the lower elevations will warm to around a 100 and increase through the remainder of the week. Relative humidity 25-35 percent will drop to 10-20 percent. Winds will be variable. Another storm system is possible by late next weekend.

### **WEATHER FORECAST:**

**Today:**  
**SKY/WEATHER:** Partly cloudy and warmer.  
**High Temperature...**72-78 above 3000 feet and 80-85 below 3000 feet.  
**24hr Change...**Up 7-10.  
**Min RH.....**28-32 % above 3000 feet and 25-30% below 3000 feet.  
**24hr Change...**Down 10-15%  
**20-FOOT WINDS:** Southwest 8-12 mph with gusts to 20.  
**CWR (>=0.10")....**0% **LAL....**1 **Haines Index...2 (Very Low)** **Mixing Height...6400 ft AGL**

**Tonight:**  
**Weather:** Clear.  
**Low Temperature...**60-65.  
**Max RH.....**45-55%  
**20-FOOT WINDS:** Southwest 8-10 mph...becoming north 4-8 mph after midnight.  
**CWR (>=0.10")....**0% **LAL...1.**

**Tuesday:**  
**SKY/WEATHER:** Partly to mostly cloudy.  
**High Temperature...**80-86 above 3000 feet and 88-94 below 3000 feet.  
**Min RH.....**25-30% above 2500 feet...22-28% above 2500 feet  
**20-FOOT WINDS:** Southwest 8-10 mph with gusts to 15 mph.  
**CWR (>=0.10")....** 0% **LAL....1** **Haines Index...2 ( Very Low)** **Mixing Height...7200 ft AGL**

**Extended Outlook**  
**Wednesday...**Partly cloudy. Low: 65-70...High: 86-96. Min RH: 15-25% Winds: Northwest 8-12 mph with gusts 15-20 mph.  
**Thursday...**Sunny. Low 62-68...High 90-100. Min RH: 10-20% North 10-12 mph.

## FIRE BEHAVIOR FORECAST

<b>FORECAST NUMBER:</b> 5	<b>TYPE OF FIRE:</b> Wildland
<b>FIRE NAME:</b> Whitmore	<b>OPERATIONAL PERIOD:</b> Aug 9-10, 2021 Day-Night-Shift
<b>DATE ISSUED:</b> Aug 8, 2021	<b>TIME ISSUED:</b> 1600
<b>UNIT:</b> WA-COA	Don Strand FBAN

### INPUTS

**WEATHER SUMMARY:** Partly cloudy and warmer. Max temp 85, Min RH 25%. Winds- Southwest 8-12 mph with gusts to 20 mph. LAL... 1

### OUTPUTS

#### FIRE BEHAVIOR

##### GENERAL:

- Don't be lulled into complacency because we had varied amounts of showers on the fire. There is some moderation on fire behavior potential but will not be long lived. Fire will spread in the 1 hour fine dead fuels. The showers didn't have much penetration of tree canopies but in the eastern half but moisture that was able to make to surface fuels will be slower to respond to the warmer and drier weather. Generally, burn out should be successful.
- There will be potential for torching and short-range spotting.
- Fuels consist of grass and sage brush; scattered to heavy of timber overstory over a mix of grass, regeneration and timber litter and areas of thinning and logging slash.
- Most spotting will be short range and also from roll outs on steeper ground. Spotting distance will approach about 500ft although with periodic wind gusts to 20 mph, watch for spots up to 0.2 miles.
- Probability of Ignition will approach 70% unshaded and 50% shaded during the warmest part of the day.

##### SPECIFIC:

**DIV A/Z/W/P:** This portion of the fire will be the warmest and driest portion of the fire. Afternoon southwesterly winds could contribute to flare ups where residual heat may exist near unburned islands interior to primary control lines.

**DIV C:** Light grass and brush fuels will readily available for fire spread in unlined areas and areas of dirty burns. Watch for wind/slope alignment with forecasted southwest winds. Winds may be squirrely due to the influence of Boot Mtn and Omak Lake. Any spot fires in the adjacent fuels will rapidly spread.

**DIV F:** Watch for wind/slope alignment. Light fuels in the area will be readily available for fire spread where not lined. Surface fuel moisture may vary in the grass/brush and timber litter fuels based on elevation and amount of moisture received yesterday. Potential for torching with short range spotting exists..r

**DIV L:** Watch for wind/slope alignment. Light fuels in the area will be readily available for fire spread where not lined.

**DIV M:** Watch for torching and spotting. Southwest afternoon winds may not be favorable for burnout.

**Initial Attack:** In the event we respond to a new start, remember light flashy fuels respond quickly to changes in wind speed, slope and/or directions.

**NIGHT:** Much of the lower portions of the fire will have isolated areas of smoldering stump/fence post holes. Pay attention to changes in winds due to changing from upslope to downslope winds near sunset.

**AIR OPERATIONS:** Watch for turbulence in the complex terrain. Smoke haze may impact visibility.

### SAFETY

- Take weather obs periodically to determine fine dead fuel moistures to help maintain SA.
- Dozer berms may hold heat and may have potential to spread to available fuels.
- Continue to watch for hold over spots on the eastern fire flanks
- Pay attention to light and flashy fuels, Fire intensity can exponentially increase and quickly change directions with increases of wind and or slope.
- Burnout – watch for wind directions and speed. Pay attention to smoke drift across fire lines potentially causing spots.

# Safety Message

9-10 August 2021

**INCIDENT: Whitmore Fire**

**OPERATIONAL PERIOD: 0600-0600**

**TOPICS: IWI PLAN, MINES, HYDRATION**

## **HYDRATION/NUTRITION**

- \* Temperatures will be on the rise quickly
- \* Drink fluids throughout operational period (water and Gatorade) not energy drinks. Begin hydration well before your shift and continue after.
- \* Set a reasonable work pace and allow adequate rest breaks
- \* Use buddy system to monitor personnel of heat related and fatigue issues
- \* For Heat Related Injuries refer to IRPG.

## **MANAGING THE MAYDAY**

The four (4) W's of sizeup: While we fight fires of varying complexities throughout the year, we rarely (and thankfully) deal with managing the EMS incident from beginning to end. This can be a daunting and stressful task for personnel. While the Emergency Plan is a useful tool, the four (4) W's is a simple, easy and provides you with a guide to establish a majority of the pertinent information needed to successfully manage the IWI.

"W"hat do I have?

"W"hat am I doing?

"W"hat do I need?

"W"ho is in command?

**We call this the 30 second blueprint for success. While it may not answer all the questions needed, it certainly gets you off on the right foot.**

## **MINES/SHAFTS**

There are a great deal of unmarked, uncovered mine shafts. These are hard to see and are not covered or guarded in any way. These are deep shafts straight down. Keep your head on a swivel and look out for each other. Do not assume where you are going is safe.

**SAFETY OFFICER: Troy Corn, Jack Cates, Don Waller (T)**

# Deliberate Risk Assessment-Hazard Summary

## 9-10 August 2021

Hazard	Mitigation	Post Risk
<b>Unburned Fuels/Firing Ops</b>	Ensure management action points are implemented and followed. Weather updates as needed during burning operations. Locate indirect firelines to minimize the amount of unburned fuels. Ensure communications between all firing operations. Establish road security at all firing sites. Follow approved firing plan for unburned fuels.	Moderate
<b>Physical Factors</b>	<b>Maintain hydration schedule.</b> Closely monitor work rate and implement rest periods. Maintain nutrition. Ensure adequate work/rest.	Moderate
Snags	Use avoidance to limit exposure time. Snag ahead to avoid exposure. Use qualified fallers, blasting, or alternate methods if needed. Conduct on-going risk analysis of all work areas. Follow Hazard Tree Safety Guidelines (IRPG page 22).	<b>High</b>
Extraction Time	Identify medivac sites and helispots. Initiate ground transport to accident site. Review IWI protocol to ensure familiarity.	<b>High</b>
Transportation	Signing of all incident roads that provide access to divisions. Practice defensive driving. In local communities obey the posted speed limits. Use reader boards to control entry as needed. Identify and evaluate contingency and alternate escape and travel routes.	<b>High</b>
Heavy Equipment	Post lookouts around equipment work areas. Establish communications with equipment boss and operator. Do not work down slope from equipment.	<b>High</b>
Transmission/Power Lines	Maintain one span radius from any downed line or compromised pole, be aware of smoke conductivity, report any downed lines or burning poles.	<b>High</b>
Aircraft	Utilize Air Attack. Ensure all resources are a safe distance from all bucket and retardant drops. Utilize air to ground primary radio channel.	<b>High</b>
Steep Terrain/Gravity	Do not work crews above or below each other. Post lookouts for rolling material. Watch footing in loose soil, rock and around vegetation. Do not work below heavy equipment. Scout and identify travel routes.	Moderate
Initial Attack	Ensure identified IA resources are briefed of expectations and ensure communication plan is provided. Ensure resources are briefed on IA command structure. Provide identified crews with area maps.	Moderate
Steep Terrain/Gravity	Do not work crews above or below each other. Post lookouts for rolling material. Watch footing in loose soil, rock and around vegetation. Do not work below heavy equipment. Scout and identify travel routes.	Moderate
Environmental Factors	Assess for known allergies and report to medical personnel. Obtain Bee/wasp spray and yellow jacket traps. Maintain an awareness of livestock and rattlesnakes.	Moderate
Fire Behavior	Be aware of burn windows and weather impacts and min/max RH for flashy fuels/local conditions. Report changes to FBAN and IMET.	Moderate
Communication	Evaluate for dead zones prior to engagement. Utilize human repeaters as needed. Ensure accountability of resources in problem areas. Be prepared if local traffic maximizes air time.	Moderate
Viral Transmission Mitigations, Communicable Disease	Maintain isolated ICP (remote briefings, etc), maintain social distancing, and wear face coverings in accordance with CDC recommendations. Report and isolate if not feeling well.	Low
Public Interaction	Place new road closures as necessary and maintain current closures. Maintain awareness of evacuation areas and provide accurate information dissemination.	Low

**Division/Group Assignment List (ICS 204 WF)**  
**Controlled Unclassified Information//Basic**

<b>1. Incident Name:</b>			<b>3.</b>			
WHITMORE			<b>Branch:</b>		<b>Division/Group</b>	
<b>2. Operational Period: DAY / NIGHT</b>					<b>A/Z/W/P</b>	
Date/Time From: 08/09/2021 0600      MON		Date/Time To: 08/10/2021 0600      TUE				
<b>4. Operations Personnel</b>						
<b>OPERATIONS CHIEF</b>		MATT CASTLE; KURT RANTA (T) TONY ENGEL; JEFF BOUSCHOR		<b>DIVISION/GROUP SUPERVISOR</b>		NIKIA HERNANDEZ
<b>SAFETY OFFICER</b>		TROY CORN; JACK CATES DON WALLER (T)		<b>AIR OPERATIONS BRANCH DIRECTOR</b>		PAUL BALFOUR
<b>5. Resources Assigned this Period</b>						
Strike Team / Task Force / Resource Designator		LWD	Leader	Number Persons	Drop Off PT./Time	Pick Up PT./Time
O-10 SOFR		08/09	DAN GARNER	1	ICP/0600	ICP/1800
C-3 HC2I MOCC INTERAGENCY CREW #4		08/21	TIMOTHY PERREN	20	ICP/0600	ICP/1800
E-316 ENG6 THUNDERBOLT **		08/18	TOBY YAZIE	2	ICP/0600	ICP/1800
SOUTH PUGET SOUND STRIKE TEAM					ICP/0600	ICP/1800
O-2109 STEN		08/20	ERIK HOTCHKISS	1	ICP/0600	ICP/1800
E-2110 ENG6 PIERCE CO FD 13 BR76		08/20	DYLAN TAPIA	3	ICP/0600	ICP/1800
E-2111 ENG6 NORTH MASON RFA BR21		08/20	LINDSAY CHAFFEE	2	ICP/0600	ICP/1800
E-2112 ENG6 MASON COUNTY FD #4 BR46		08/20	MARK FRAZIER	2	ICP/0600	ICP/1800
E-2113 ENG5 WEST MASON FIRE BR16-1		08/20	CHRIS DECAUPA	2	ICP/0600	ICP/1800
E-2114 ENG6 KING COUNTY FD 45		08/20	CONNOR CHESS	2	ICP/0600	ICP/1800
E-2115 WTS2 KING COUNTY FD 45 WT2		08/20	ROBERT LEE	1	ICP/0600	ICP/1800
O-37 EMPF MEDIC2		08/21	JENNEL SMITH	1	ICP/0600	ICP/1800
E-5 AMBU1 (ALS) MED TRANSPORT		08/21	JENNIFER BOSTWICK	2	DP1/0600	DP1/1800
<b>8. Division/Group Communication Summary</b>						
Function	Channel	RX Frequency N/W	RX Tone/NAC	TX Frequency N/W	TX Tone/NAC	Mode
TACTICAL	1	168.0500	146.2	168.0500	146.2	A
COMMAND	7	173.9250	146.2	169.8375	146.2	A
COMMAND	9	169.7250	88.5	164.2500	100.0	A
AIR TO GROUND	14	171.8625		171.8625		A
<b>9. Prepared By (Resource Unit Leader)</b>			<b>Approved By (Planning Section Chief)</b>		<b>Date</b>	<b>Time</b>
NATHAN JEFFRIES			HOWARD JOHNSON		08/08/2021	2000



**Division/Group Assignment List (ICS 204 WF)**  
**Controlled Unclassified Information//Basic**

<b>1. Incident Name:</b>			<b>3.</b>			
WHITMORE			<b>Branch:</b>		<b>Division/Group</b>	
<b>2. Operational Period:</b> DAY / NIGHT					<b>A/Z/W/P</b>	
Date/Time From: 08/09/2021 0600 MON		Date/Time To: 08/10/2021 0600 TUE				
<b>4. Operations Personnel</b>						
<b>OPERATIONS CHIEF</b>		MATT CASTLE; KURT RANTA (T) TONY ENGEL; JEFF BOUSCHOR		<b>DIVISION/GROUP SUPERVISOR</b>		NIKIA HERNANDEZ
<b>SAFETY OFFICER</b>		TROY CORN; JACK CATES DON WALLER (T)		<b>AIR OPERATIONS BRANCH DIRECTOR</b>		PAUL BALFOUR
<b>5. Resources Assigned this Period</b>						
Strike Team / Task Force / Resource Designator		LWD	Leader	Number Persons	Drop Off PT./Time	Pick Up PT./Time
<b>6. Control Operations/Work Assignments:</b>						
<p>TASK: Secure fire North and East of Columbia River Road, South of Omak Lake to Division break. Provide for Structure Protection on Columbia River Road, Kartar Valley and Omak Lake road.</p> <p>PURPOSE: Protect property and resources; limit further fire spread to the West.</p> <p>END STATE: Fire is contained south of Omak Lake and East of Columbia River road and structures are not threatened.</p>						
<b>7. Special Instructions:</b>						
** Resource is assigned to the Summit Trail fire and is on loan to Whitmore fire.						
<b>8. Division/Group Communication Summary</b>						
Function	Channel	RX Frequency N/W	RX Tone/NAC	TX Frequency N/W	TX Tone/NAC	Mode
TACTICAL	1	168.0500	146.2	168.0500	146.2	A
COMMAND	7	173.9250	146.2	169.8375	146.2	A
COMMAND	9	169.7250	88.5	164.2500	100.0	A
AIR TO GROUND	14	171.8625		171.8625		A
<b>9. Prepared By (Resource Unit Leader)</b>			<b>Approved By (Planning Section Chief)</b>		<b>Date</b>	<b>Time</b>
NATHAN JEFFRIES			HOWARD JOHNSON		08/08/2021	2000

**Division/Group Assignment List (ICS 204 WF)**  
**Controlled Unclassified Information//Basic**

<b>1. Incident Name:</b>			<b>3.</b>			
WHITMORE			<b>Branch:</b>		<b>Division/Group</b>	
<b>2. Operational Period: DAY / NIGHT</b>					<b>C/F</b>	
Date/Time From: 08/09/2021 0600      MON		Date/Time To: 08/10/2021 0600      TUE				
<b>4. Operations Personnel</b>						
<b>OPERATIONS CHIEF</b>		MATT CASTLE; KURT RANTA (T) TONY ENGEL; JEFF BOUSCHOR		<b>DIVISION/GROUP SUPERVISOR</b>		JEROMY WILSON JAMES DICKINSON (T)
<b>SAFETY OFFICER</b>		TROY CORN; JACK CATES DON WALLER (T)		<b>AIR ATTACK SUPERVISOR</b>		PAUL BALFOUR
<b>5. Resources Assigned this Period</b>						
Strike Team / Task Force / Resource Designator		LWD	Leader	Number Persons	Drop Off PT./Time	Pick Up PT./Time
O-1.61 SOF2		08/20	JOSHUA NORTHRUP	1	ICP/0600	ICP/1800
O-11 TFLD		08/09	DAVE HYLTON	1	ICP/0600	ICP/1800
O-12 HEQB		08/21	TRAVIS BRUCH	1	ICP/0600	ICP/1800
C-7 HC1 LA GRANDE IHC		08/20	JOSH DIACETIS	20	ICP/0600	ICP/1800
C-1 HC2 GRIZZLY FIREFIGHTERS INC		08/21	KARLA BEJAR	20	ICP/0600	ICP/1800
C-32 HC2 COA #1 **		08/22	PHILLIP MCLAUGHLIN	20	ICP/0600	ICP/1800
E-7 ENG6 OREGON WOODS, INC.		08/19	BEN COOK	3	ICP/0600	ICP/1800
E-8 ENG6 NM-EMP NPS		08/22	LAFE SACKETT	6	ICP/0600	ICP/1800
E-135 ENG3 WF SUPT 316 (R&R RETURN 8/12)**		08/19	JOEY DEMARTINO	3	ICP/0600	ICP/1800
E-228 ENG4 WOODPECKER 5 **		08/11	JOSEPH BOIANOFF	3	ICP/0600	ICP/1800
E-17 WTS2 FYR FLY LTD #68		08/19	LINN LAMB	1	ICP/0600	ICP/1800
E-18 WTS2 PORTABLE ROCK PRODUCTION		08/19	JIMMY POWELL	1	ICP/0600	ICP/1800
E-19 WTS2 BOMBEROS WATER LLC		08/19	KURT FIGG-HOBLYN	1	ICP/0600	ICP/1800
E-194 WTS2 OWENS **		08/12	FRANKLIN OWENS	1	ICP/0600	ICP/1800
E-2 DOZ2 SILVER-NICKEL LOGGING LLC		08/19	TOBY EPPERSON	2	ICP/0600	ICP/1800
E-20 DOZ2 BLM		08/22	BLAINE JEWETT	1	ICP/0600	ICP/1800
<b>8. Division/Group Communication Summary</b>						
Function	Channel	RX Frequency N/W	RX Tone/NAC	TX Frequency N/W	TX Tone/NAC	Mode
TACTICAL	2	168.2000	146.2	168.2000	146.2	A
COMMAND	7	173.9250	146.2	169.8375	146.2	A
COMMAND	9	169.7250	88.5	164.2500	100.0	A
AIR TO GROUND	14	171.8625		171.8625		A
<b>9. Prepared By (Resource Unit Leader)</b>			<b>Approved By (Planning Section Chief)</b>		<b>Date</b>	<b>Time</b>
NATHAN JEFFRIES			HOWARD JOHNSON		08/08/2021	2000

**Division/Group Assignment List (ICS 204 WF)**  
**Controlled Unclassified Information//Basic**

<b>1. Incident Name:</b>			<b>3.</b>			
WHITMORE			<b>Branch:</b>		<b>Division/Group</b>	
<b>2. Operational Period: DAY / NIGHT</b>					<b>C/F</b>	
Date/Time From: 08/09/2021 0600 MON		Date/Time To: 08/10/2021 0600 TUE				
<b>4. Operations Personnel</b>						
<b>OPERATIONS CHIEF</b>		MATT CASTLE; KURT RANTA (T) TONY ENGEL; JEFF BOUSCHOR		<b>DIVISION/GROUP SUPERVISOR</b>		JEROMY WILSON JAMES DICKINSON (T)
<b>SAFETY OFFICER</b>		TROY CORN; JACK CATES DON WALLER (T)		<b>AIR ATTACK SUPERVISOR</b>		PAUL BALFOUR
<b>5. Resources Assigned this Period</b>						
Strike Team / Task Force / Resource Designator		LWD	Leader	Number Persons	Drop Off PT./Time	Pick Up PT./Time
E-80 DOZ2 IRON TRIANGLE **		08/09	RICK SAUL	2	ICP/0600	ICP/1800
E-5000 DOZ4 SCFD9		08/20	MICHAEL WOLF	1	ICP/0600	ICP/1800
E-114 EXCA S & G INDUSTRIAL LLC		08/22			ICP/0600	ICP/1800
O-43 REMS 9 SPOKANE COUNTY FD9		08/19	CLINT JUNTUNEN	1	ICP/0600	ICP/1800
<b>6. Control Operations/Work Assignments:</b>						
<p>TASK - Scout and establish fireline east of Peter Flat and Dan Nason Basin  PURPOSE - Protect property and resources; limit further fire spread to the West.  END STATE - Fireline is established and secured and fire is contained East of Peter Flat and Dan Nason Basin.</p>						
<b>7. Special Instructions:</b>						
** Resource is assigned to the Summit Trail fire and is on loan to Whitmore fire.						
<b>8. Division/Group Communication Summary</b>						
Function	Channel	RX Frequency N/W	RX Tone/NAC	TX Frequency N/W	TX Tone/NAC	Mode
TACTICAL	2	168.2000	146.2	168.2000	146.2	A
COMMAND	7	173.9250	146.2	169.8375	146.2	A
COMMAND	9	169.7250	88.5	164.2500	100.0	A
AIR TO GROUND	14	171.8625		171.8625		A
<b>9. Prepared By (Resource Unit Leader)</b>			<b>Approved By (Planning Section Chief)</b>		<b>Date</b>	<b>Time</b>
NATHAN JEFFRIES			HOWARD JOHNSON		08/08/2021	2000

**Division/Group Assignment List (ICS 204 WF)**  
**Controlled Unclassified Information//Basic**

<b>1. Incident Name:</b>			<b>3.</b>			
WHITMORE			<b>Branch:</b>		<b>Division/Group</b>	
<b>2. Operational Period: DAY / NIGHT</b>					L	
Date/Time From: 08/09/2021 0600 MON		Date/Time To: 08/10/2021 0600 TUE				
<b>4. Operations Personnel</b>						
<b>OPERATIONS CHIEF</b>		MATT CASTLE; KURT RANTA (T) TONY ENGEL; JEFF BOUSCHOR		<b>DIVISION/GROUP SUPERVISOR</b>		ROBERT HINDS
<b>SAFETY OFFICER</b>		TROY CORN; JACK CATES DON WALLER (T)		<b>AIR OPERATIONS BRANCH DIRECTOR</b>		PAUL BALFOUR
<b>5. Resources Assigned this Period</b>						
Strike Team / Task Force / Resource Designator		LWD	Leader	Number Persons	Drop Off PT./Time	Pick Up PT./Time
O-1.63 SOF2		08/20	JOHN BARNES	1	ICP/0600	ICP/1800
C-9 HC2I FLAGSTAFF IHC		08/22	MARK ANDERSON	22	ICP/0600	ICP/1800
E-102 ENG3 ELEPHANT AHEAD VOL FD		08/18	CHRIS ANTAIS	4	ICP/0600	ICP/1800
E-96 DOZ4 OWENS FREIGHT		08/22	RON ANDERSON	2	ICP/0600	ICP/1800
<b>6. Control Operations/Work Assignments:</b>						
<p>TASK - Scout and establish firelines to keep fire South and East of Highway 155.  PURPOSE - Protect property and resources; limit further fire spread to the North.  END STATE - Fireline is established and secured and fire is contained South of Highway 155.</p>						
<b>7. Special Instructions:</b>						
<b>8. Division/Group Communication Summary</b>						
Function	Channel	RX Frequency N/W	RX Tone/NAC	TX Frequency N/W	TX Tone/NAC	Mode
TACTICAL	3	168.6000	146.2	168.6000	146.2	A
COMMAND	7	173.9250	146.2	169.8375	146.2	A
COMMAND	9	169.7250	88.5	164.2500	100.0	A
AIR TO GROUND	14	171.8625		171.8625		A
<b>9. Prepared By (Resource Unit Leader)</b>			<b>Approved By (Planning Section Chief)</b>		<b>Date</b>	<b>Time</b>
NATHAN JEFFRIES			HOWARD JOHNSON		08/08/2021	2000

**Division/Group Assignment List (ICS 204 WF)**  
**Controlled Unclassified Information//Basic**

<b>1. Incident Name:</b>			<b>3.</b>			
WHITMORE			<b>Branch:</b>		<b>Division/Group</b>	
<b>2. Operational Period: DAY / NIGHT</b>					<b>M</b>	
Date/Time From: 08/09/2021 0600      MON		Date/Time To: 08/10/2021 0600      TUE				
<b>4. Operations Personnel</b>						
<b>OPERATIONS CHIEF</b>		MATT CASTLE; KURT RANTA (T) TONY ENGEL; JEFF BOUSCHOR		<b>DIVISION/GROUP SUPERVISOR</b>		MIKE JACKSON SAM STEINSHOUER (T)
<b>SAFETY OFFICER</b>		TROY CORN; JACK CATES DON WALLER (T)		<b>AIR OPERATIONS BRANCH DIRECTOR</b>		PAUL BALFOUR
<b>5. Resources Assigned this Period</b>						
Strike Team / Task Force / Resource Designator		LWD	Leader	Number Persons	Drop Off PT./Time	Pick Up PT./Time
O-1.63 SOF2		08/19	JOHN BARNES	1	ICP/0600	ICP/1800
O-9 FALM SWEDBERG CONTR **		08/16	JEFALD WULFF	2	ICP/0600	ICP/1800
C-4 HC2 OC FORESTRY		08/21	VALINE COLIN	20	ICP/0600	ICP/1800
C-13 HC2 OC FORESTRY INC		08/21	COLIN VALENNTAN	20	ICP/0600	ICP/1800
C-50 HC2 PACIFIC COAST **		08/13	NORBERTO PANTELEON	20	ICP/0600	ICP/1800
E-11 ENG6 CONNECTICUT FIRE GROUP		08/21	JOE BURNHAM	4	ICP/0600	ICP/1800
E-85 ENG6 OC FORESTRY		08/21	AARON ABEL	3	ICP/0600	ICP/1800
E-131 ENG6 CHAFFEE CO FPD		08/09	BRIAN WELCH	3	ICP/0600	ICP/1800
E-174 ENG6 MARYLAND FS TYPE 6		08/14	SERGIO CASTILLO	4	ICP/0600	ICP/1800
E-27 WTS2 IA CONSTRUCTION & FIRE **		08/13	TERRY BURR	1	ICP/0600	ICP/1800
E-305 ENG6 MID-COLUMBIA RESOURCES LLC **		08/17	DAVID JOHNSON	3	ICP/0600	ICP/1800
E-54 WTS2 BOULDER CREEK **		08/11	JOE SCHOENMAKERS	1	ICP/0600	ICP/1800
E-76 WTS2 BIA ROADS			JIM PHILLIPS	2	ICP/0600	ICP/1800
E-78 WTS2 COWBOY FIRE LLC		08/21	GREGORY WITSMAN	1	ICP/0600	ICP/1800
E-79 WTS2 SUGDEN FIRE		08/22	THOMAS SUGDEN	1	ICP/0600	ICP/1800
E-1 DOZ3 TUNK CREEK LLC **		08/13	DARREL GREEN	2	ICP/0600	ICP/1800
<b>8. Division/Group Communication Summary</b>						
Function	Channel	RX Frequency N/W	RX Tone/NAC	TX Frequency N/W	TX Tone/NAC	Mode
TACTICAL	4	166.7250	146.2	166.7250	146.2	A
COMMAND	7	173.9250	146.2	169.8375	146.2	A
COMMAND	9	169.7250	88.5	164.2500	100.0	A
AIR TO GROUND	14	171.8625		171.8625		A
<b>9. Prepared By (Resource Unit Leader)</b>			<b>Approved By (Planning Section Chief)</b>		<b>Date</b>	<b>Time</b>
NATHAN JEFFRIES			HOWARD JOHNSON		08/08/2021	2000

**Division/Group Assignment List (ICS 204 WF)**  
**Controlled Unclassified Information//Basic**

<b>1. Incident Name:</b>				<b>3.</b>		
WHITMORE				<b>Branch:</b>	<b>Division/Group</b>  <b>M</b>	
<b>2. Operational Period: DAY / NIGHT</b>						
Date/Time From: 08/09/2021 0600      MON		Date/Time To: 08/10/2021 0600      TUE				
<b>4. Operations Personnel</b>						
<b>OPERATIONS CHIEF</b>		MATT CASTLE; KURT RANTA (T) TONY ENGEL; JEFF BOUSCHOR		<b>DIVISION/GROUP SUPERVISOR</b>		MIKE JACKSON SAM STEINSHOUER (T)
<b>SAFETY OFFICER</b>		TROY CORN; JACK CATES DON WALLER (T)		<b>AIR OPERATIONS BRANCH DIRECTOR</b>		PAUL BALFOUR
<b>5. Resources Assigned this Period</b>						
Strike Team / Task Force / Resource Designator		LWD	Leader	Number Persons	Drop Off PT./Time	Pick Up PT./Time
E-130 SKG3 TUNK CREEK LLC		08/22	DYLAN GREEN	2	ICP/0600	ICP/1800
O-36 EMPF MEDIC 3		08/21	ROBERT SMITH	1	ICP/0600	ICP/1800
O-62 EMPF MEDIC 1		08/20	JOHN LIPSKER	1	ICP/0600	ICP/1800
E-67 AMBU 2 (BLS) LINCOLN COUNTY		08/21	CORREY KRAIS	2	DP130/0600	ICP/1800
<b>6. Control Operations/Work Assignments:</b>						
<p>TASK - Anchor and flank fire west of Lower Coyote Creek Road north from Colombia River Road and division M/P break</p> <p>PURPOSE - Protect property and natural resources east of Lower Coyote Creek Road.</p> <p>END STATE - Fire is contained south of Coyote Creek Road. Structures south of the fire area are not threatened.</p>						
<b>7. Special Instructions:</b>						
<p>** Resource is assigned to the Summit Trail fire and is on loan to Whitmore fire.</p> <p>Protect cultural resources; contact resource advisor as needed.</p>						
<b>8. Division/Group Communication Summary</b>						
Function	Channel	RX Frequency N/W	RX Tone/NAC	TX Frequency N/W	TX Tone/NAC	Mode
TACTICAL	4	166.7250	146.2	166.7250	146.2	A
COMMAND	7	173.9250	146.2	169.8375	146.2	A
COMMAND	9	169.7250	88.5	164.2500	100.0	A
AIR TO GROUND	14	171.8625		171.8625		A
<b>9. Prepared By (Resource Unit Leader)</b>			<b>Approved By (Planning Section Chief)</b>		<b>Date</b>	<b>Time</b>
NATHAN JEFFRIES			HOWARD JOHNSON		08/08/2021	2000

**Division/Group Assignment List (ICS 204 WF)**  
**Controlled Unclassified Information//Basic**

<b>1. Incident Name:</b>		<b>3.</b>				
WHITMORE		<b>Branch:</b>		<b>Division/Group</b>		
<b>2. Operational Period:</b>		<b>STRUCTURE GROUP</b>				
DAY / NIGHT						
Date/Time From:		Date/Time To:				
08/09/2021 0600	MON	08/10/2021 0600	TUE			
<b>4. Operations Personnel</b>						
<b>OPERATIONS CHIEF</b>	MATT CASTLE; KURT RANTA (T) TONY ENGEL; JEFF BOUSCHOR		<b>DIVISION/GROUP SUPERVISOR</b>	BRANDYN HARVEY		
<b>SAFETY OFFICER</b>	TROY CORN; JACK CATES DON WALLER (T)		<b>AIR ATTACK SUPERVISOR</b>	PAUL BALFOUR		
<b>5. Resources Assigned this Period</b>						
Strike Team / Task Force / Resource Designator	LWD	Leader	Number Persons	Drop Off PT./Time	Pick Up PT./Time	
<b>6. Control Operations/Work Assignments:</b>						
TASK - Prepare structure protection plan for structures on the Highway 155 corridor PURPOSE - Identify structures, resources needed and strategic plan for structure protection. END STATE - Plan is developed and implemented to protect structures in the Highway 155 corridor.						
<b>7. Special Instructions:</b>						
<b>8. Division/Group Communication Summary</b>						
Function	Channel	RX Frequency N/W	RX Tone/NAC	TX Frequency N/W	TX Tone/NAC	Mode
TACTICAL	6	168.2500	146.2	168.2500	146.2	A
COMMAND	7	173.9250	146.2	169.8375	146.2	A
COMMAND	9	169.7250	88.5	164.2500	100.0	A
AIR TO GROUND	14	171.8625		171.8625		A
<b>9. Prepared By (Resource Unit Leader)</b>		<b>Approved By (Planning Section Chief)</b>		<b>Date</b>	<b>Time</b>	
NATHAN JEFFRIES		HOWARD JOHNSON		08/08/2021	2000	





**Division/Group Assignment List (ICS 204 WF)**  
**Controlled Unclassified Information//Basic**

<b>1. Incident Name:</b>			<b>3.</b>			
WHITMORE			<b>Branch:</b>		<b>Division/Group</b>	
<b>2. Operational Period: DAY / NIGHT</b>					<b>NIGHT SOUTH</b>	
Date/Time From: 08/09/2021 0600 MON		Date/Time To: 08/10/2021 0600 TUE				
<b>4. Operations Personnel</b>						
<b>OPERATIONS CHIEF</b>		MATT CASTLE; KURT RANTA (T) TONY ENGEL; JEFF BOUSCHOR		<b>DIVISION/GROUP SUPERVISOR</b>		JEFF PRICHER
<b>SAFETY OFFICER</b>		TROY CORN; JACK CATES DON WALLER (T)		<b>AIR OPERATIONS BRANCH DIRECTOR</b>		PAUL BALFOUR
<b>5. Resources Assigned this Period</b>						
Strike Team / Task Force / Resource Designator		LWD	Leader	Number Persons	Drop Off PT./Time	Pick Up PT./Time
O-76 SOF2		08/21	RICHARD MCCONNELL	1	ICP/1800	ICP/0600
E-9 ENG6 AAA FORESTRY		08/20	CHRIS MARTIN	3	ICP/1800	ICP/0600
E-93 ENG6 ROCKY POINT WILDFIRE		08/22	RYAN FLORES	3	ICP/1800	ICP/0600
GRANT COUNTY STRIKE TEAM					ICP/1800	ICP/0600
O-2101 STEN		08/19	TRAVIS SVILAR	1	ICP/1800	ICP/0600
O-2108 STEN(T)		08/19	SHAWN SHERMAN	1	ICP/1800	ICP/0600
E-2102 ENG4 EPHRATA FD B-2122		08/19	MIKE STUSSY	2	ICP/1800	ICP/0600
E-2103 ENG3 GRANT CO 5 585		08/19	SAM HOCHSTATTER	3	ICP/1800	ICP/0600
E-2104 ENG GRANT CO 6		08/19	DARYL DORMAIER	2	ICP/1800	ICP/0600
E-2105 ENG6 GRANT CO 12 B-1216		08/19	MARK BISE	2	ICP/1800	ICP/0600
E-2106 ENG5 DOUGLAS CO 15 B-1523		08/19	JEFF ZAHN	4	ICP/1800	ICP/0600
E-2107 WTS2 MOSES LAKE FIRE T-1		08/19	BRANDON BURNS	2	ICP/1800	ICP/0600
<b>6. Control Operations/Work Assignments:</b>						
TASK - Patrol and secure structures as needed. PURPOSE - Protect property and resources, prevent further damage and loss to structures. END STATE - Structures are protected with no additional structure loss.						
<b>7. Special Instructions:</b>						
<b>8. Division/Group Communication Summary</b>						
Function	Channel	RX Frequency N/W	RX Tone/NAC	TX Frequency N/W	TX Tone/NAC	Mode
TACTICAL	5	166.7750	146.2	166.7750	146.2	A
COMMAND	7	173.9250	146.2	169.8375	146.2	A
COMMAND	9	169.7250	88.5	164.2500	100.0	A
AIR TO GROUND	14	171.8625		171.8625		A
<b>9. Prepared By (Resource Unit Leader)</b>			<b>Approved By (Planning Section Chief)</b>		<b>Date</b>	<b>Time</b>
NATHAN JEFFRIES			HOWARD JOHNSON		08/08/2021	2000

**AIR OPERATIONS SUMMARY**

PREPARED BY: Paul Balfour

PREPARED DATE/TIME: August 8, 2021 1800hrs

<b>INCIDENT NAME:</b> <b>WHITMORE</b>	<b>2. OPERATIONAL PERIOD:</b> Date: 8/9/2021      Helibase Start Time: 0830 End Time: 2030      Sunrise: 0540 Sunset: 2024 (Times valid for Nespelem)
--	---

<b>3. REMARKS (Safety Notes, Hazards, Air Operations Special Equipment, etc.):</b> General Aviation, See & Avoid Bucket work, Retardant drops: ensure area is clear of ground personnel before dropping; watch for wires; be aware of potential for turbulence at ridge tops, saddles, canyons, etc *** BE AWARE OF FATIGUE, TAKE LONGER BREAKS WHEN FLYING IN SMOKEY CONDITIONS. *** Report all TFR intrusions to Air Operations, Air Support or Helibase as soon as possible.	<b>4. MEDEVAC A/C:</b> Contact Mt Tolman Fire Center 509-634-3100 N125CL PSICC 425-783-6150	<b>5. TFR #1/3257 6500msl 124.225 (A5)</b>
---	--	--

PERSONNEL	Phone	7. FREQUENCIES	AM	FM	8. FIXED-WING	# Avail / Type/ Make-Model / FAA N# / Base(s)
AOBD: Paul Balfour O-1.40	509-993-8739	AIR/AIR Primary (A5)	124.225		Fixed Wing/Buckets	DIVS order thru ATGS if up, or Whitmore Communications
ASGS: Tim Lyda O-1.41	206-473-8560	AIR/AIR Secondary (A16)	134.050			
HEBM:		AIR/GROUND Primary (A-17)		171.8625	ATGS Aircraft	AA Mike Stout O-47 Kodiak N420Q (A20)  LATs Order through Air Attack/AOBD Mt Tolman Dispatch
HEMG:		AIR/GROUND Secondary		156.0225 T-103.5		
ATGS: Mike Stout O-47	208-304-4237	Air Keller Flt Flw		Rx172.775 T-156.7		
ATGS:				Tx166.325 T-123.0		
Mt Tolman:	509-634-3100	Air/Grnd 03 IA		166.6125	NOTES:	Whitmore Helibase: N48 08 75 Elevation 1769 W118 59 00
Debbie Coudell	509-570-4133	A/G DNR IA		159.270 T-103.5		DECK: 163.100
Michelle	509-675-0675					email costs to timlyda22@gmail.com

**9. HELICOPTERS**

FAA N#	TY	MAKE/MODEL	BASE	START	AVAIL	REMARKS	FAA N#	TY	MAKE/MODEL	BASE	START	AVAIL	REMARKS

# INCIDENT RADIO COMMUNICATIONS PLAN (ICS 205)

Controlled Unclassified Information//Basic

<b>1. Incident Name:</b>	<b>2. Date/Time Prepared:</b>	<b>3. Operational Period: DAY / NIGHT</b>	
WHITMORE	Date: 08/08/2021 Time: 1450	Date/Time From: 08/09/2021 0600 MON	Date/Time To: 08/10/2021 0600 TUE

**4. Basic Radio Channel Use:**

Zone Group	Ch #	Function	Channel Name/Trunked Radio System Talkgroup	Assignment	RX Freq	RX Tone/NAC	TX Freq	TX Tone/NAC	Mode (A,D, or M)	Remarks
	1	TACTICAL	TAC 1	DIV A / Z / W / P	168.0500	146.2	168.0500	146.2	A	
	2	TACTICAL	TAC 2	DIV C / F	168.2000	146.2	168.2000	146.2	A	
	3	TACTICAL	TAC 3	DIV L	168.6000	146.2	168.6000	146.2	A	
	4	TACTICAL	TAC 4	DIV M	166.7250	146.2	166.7250	146.2	A	
	5	TACTICAL	TAC 5	NIGHT N / S	166.7750	146.2	166.7750	146.2	A	
	6	TACTICAL	TAC 6	STRUCTURE	168.2500	146.2	168.2500	146.2	A	
	7	COMMAND	CMD 7	EAST SIDE OF FIRE	173.9250	146.2	169.8375	146.2	A	ARMSTRONG LO
	8	COMMAND	CMD 8	RESERVED	159.4275	192.8	151.2725	192.8	A	NOT IN SERVICE
	9	COMMAND	CMD 9	ALL DIVS - BACKUP CMD	169.7250	88.5	164.2500	100.0	A	FIRE A-MOSES MTN
	10	COMMAND	MOSES	IA	169.7125	136.5	164.1625	100.0	A	FIRE B-MOSES MTN-IA ONLY
	11	TACTICAL	WA REDNET	IA	153.8300		153.8300		A	IA ONLY
	12	TACTICAL	C TAC	IA	166.9750	151.4	166.9750	151.4	A	IA ONLY
	13	AIR TO GROUND	ATG 03	IA	166.6125		166.6125		A	IA ONLY
	14	AIR TO GROUND	A/G PRI	PRIMARY	171.8625		171.8625		A	AIR TO GROUND PRIMARY
	15	AIR TO GROUND	A/G SEC	SECONDARY	156.0225	103.5	156.0225	103.5	A	LOW POWER ONLY
	16	AIR GUARD	AIRGUARD	AIRGUARD	168.6250		168.6250	110.9	A	EMERGENCY AIR ONLY

**5. Special Instructions:**

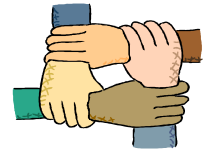
<b>6. Prepared By</b> (Communications Unit Leader)	Name: MISSY PARKER	Signature: <i>Missy Parker</i>
ICS 205	IAP Page	Date/Time: 08/08/2021 1450

Controlled Unclassified Information//Basic

FINAL



# Human Resource Message



**Whitmore Fire  
August 9-10, 2021 0600-0600**

**Thank you Fire Personnel for Being Here:**

**NW Team 12, the DNR, the Colville Agency, and the Community at Large appreciates everyone who is here working in support of this fire. This area has seen fire for many weeks and families have lost their homes, personal items, pets, livestock, and more.**

**With your help, we can minimize the impacts to other private property, critical infrastructure, timber, cultural and natural resources including water, fish, wildlife, and range land. The hard work that you are doing is meaningful, necessary, and very much appreciated so please do not hesitate to reach out to any team member or Human Resources if you need assistance with anything related to this fire. We are here to support you.**

**While going about your day, please be considerate of all fire personnel and to the folks in this community. Please be professional in your work and in your actions.**

**Quote for the Day:**

**If something is wrong, fix it now. But train yourself not to worry, worry fixes nothing. — *Ernest Hemingway***

**Be safe out there today!**



**Please continue to follow all COVID-19 mitigations as identified in the IAP.**

**Susie Manezes, NW-Team 12- (HRSP) Contact Number: 602-571-9327 (Call or Text)  
Lost and Found located at the Check-in at the ICP**

# Logistics Message

## Whitmore Fire

### Supply Hours

Cache 0530 to 2200

Ordering 0600 to 2200

### Ground Support

0600 to 2200

### Kitchen Hours

Breakfast 0500 to 0900

Dinner 1700 to 2200

### Shower Trailer Hours

0500-1200

1200-1400 Closed for Cleaning

1400-2200



## Whitmore Fire Finance

FSC2 – Cheri Fuller, FSC2 (T) Christina Goebel

*Personal Time – Carol Long or Frances Tobia*

*Equipment Time & VIPR – Mark Bohnet or Todd Powell*

Email : [2021.whitmore.finance@firenet.gov](mailto:2021.whitmore.finance@firenet.gov)

Phone: 509-634-2013

Hours of operation 0530 – 2200

*There is a box located outside of the ICP where CTRs and Shift Tickets can be left. Our ICPI Rob will be over at briefing area to turn in CTR/ST. If you have questions and need to talk to anyone in finance, please call the number above. You can also email us at the email.*

*There are 2 fires that we are working so please make sure to put in the remarks what fire you are on. We will take all CTR/ST for all 2 fires and turn them into the right people. Whitmore, and Summit Fires.*

*If you are a Summit resource that is being lend/lease, you will have to go back to Summit and demob.*

### **Resources that need to contact finance**

# Pro Tip: Map Download

How to resolve troubles with downloading maps into Avenza.

**Note:** These directions were written for Apple, but the steps are roughly the same for Android.

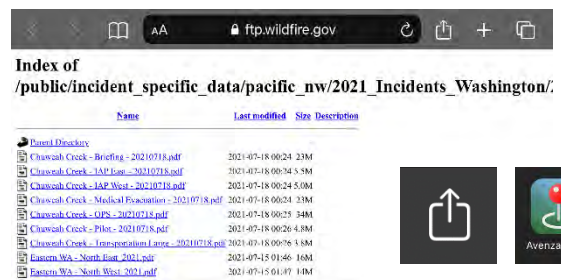
## Start Here:

1. Connect to Wi-Fi as the local area's cellular network is not fast enough for large file downloads. This may result in a browser timeout and error message about the map not being able to download to be displayed. The Community Center has a guest Wi-Fi that can be utilized.
2. For either method below, **START BY SCANNING THE QR CODE** on the front of the IAP to get to the FTP site and 'Current\_Maps' folder.



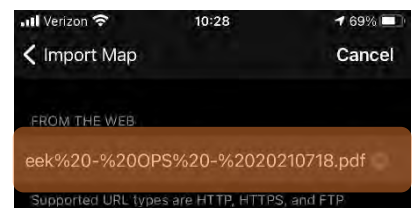
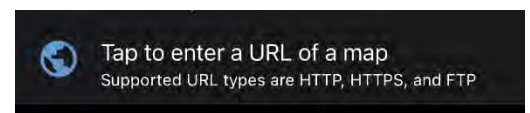
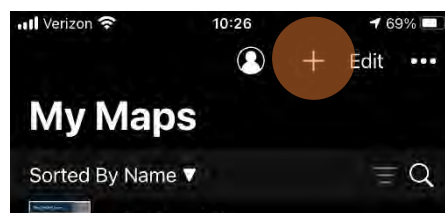
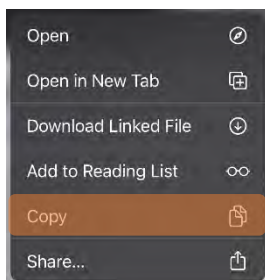
## Method 1: From a browser

1. Tap on the desired map link and wait for the preview.  
*\* If it fails to load, use method 2 instead*
2. Tap the 'send to' icon (square with up arrow)
3. Choose the Avenza app



## Method 2: From Avenza direct

1. Tap and hold on the desired map link, then choose 'copy' to copy the direct URL to the map
2. Launch the Avenza app
3. When not in any map... Tap the + (plus) icon at the top of the screen
4. Choose the load from URL option (last choice)
5. Paste the direct URL to the map
6. Tap 'Done' ; the map will begin downloading

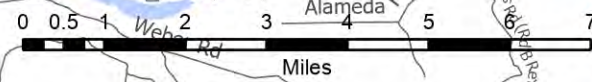
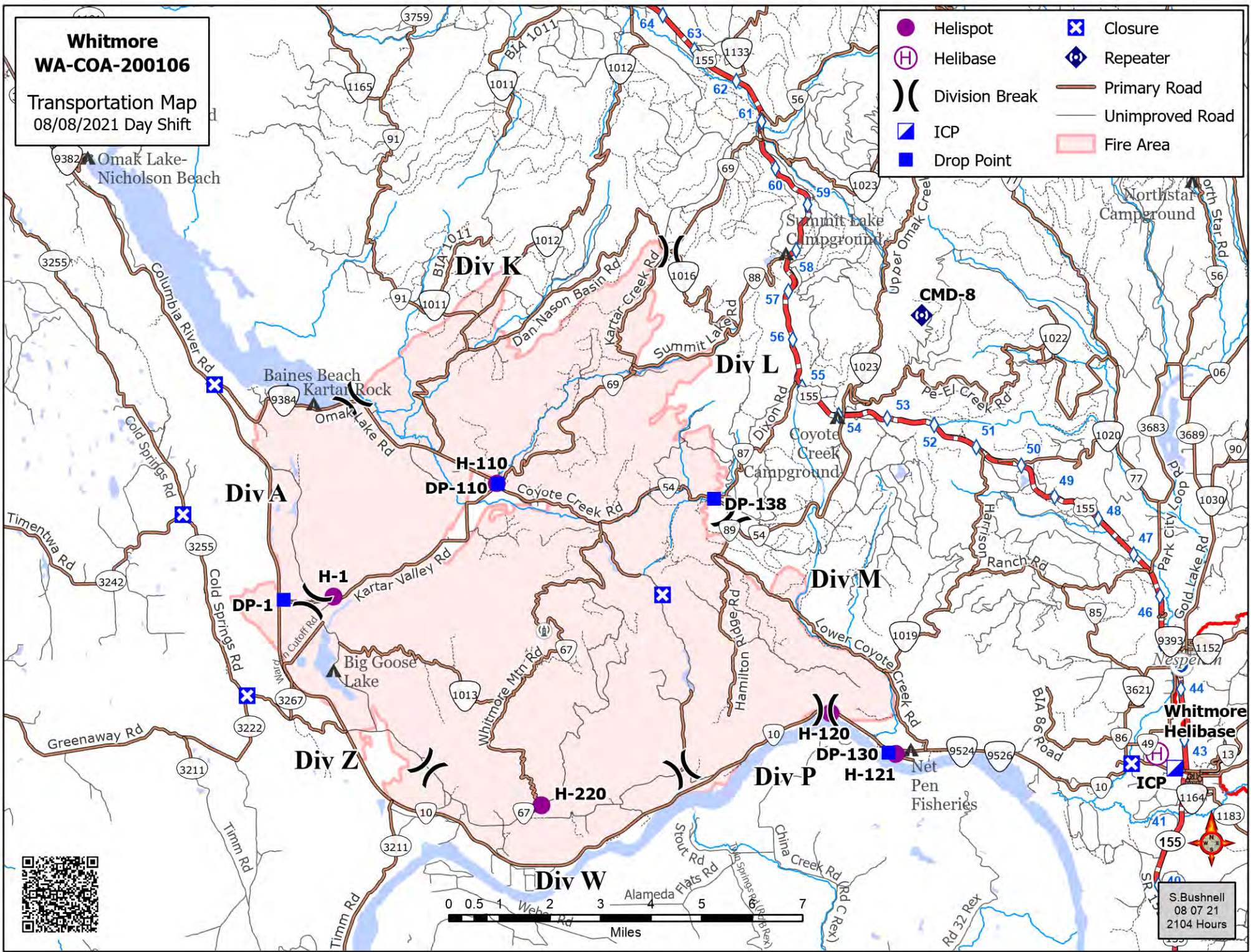




**Whitmore  
WA-COA-200106**

Transportation Map  
08/08/2021 Day Shift

- Helispot
- ⊗ Closure
- Ⓜ Helibase
- Ⓢ Repeater
- )) Division Break
- Primary Road
- ▬ Unimproved Road
- ▬ ICP
- Drop Point
- ▭ Fire Area



S. Bushnell  
08 07 21  
2104 Hours



## WHITMORE FIRE COVID-19 MITIGATIONS

**Supervisors are required to go over this list each morning with assigned resources- report any positive symptoms to medical unit.**

In the last 24 hours have you experienced:

- Cough more than expected?
- Shortness of breath or difficulty breathing?
- Fever? Chills?
- Muscle pain, outside your normal for firefighting?
- Sore throat?
- New loss of taste or smell?
- Fatigue, outside your normal for firefighting?
- Headache, outside your normal for firefighting?
- Congestion or runny nose, outside your normal for firefighting?
- Nausea or vomiting
- Diarrhea

*\* Take temperature with no-touch thermometer, if available \**



**Wear a mask in fire camp regardless of vaccination status, unless outdoors and able to maintain at least 6ft of distance at all times, alone in an enclosed space or actively engaged in firefighting on the fireline.**

**Use the Zoom link provided to join briefings remotely.**

**Observe 6ft Distancing whenever possible.**

**Observe “Module as One” practices – only close contact with crew (engine, handcrew, etc.) that you live and work with all summer. Observe distancing and masking around everyone else. Do not co-mingle with other crews or “modules” in camp or on the line.**

**Send crew representatives to pick up meals - masks must be worn in food lines.**

**No entry to ICP building except Incident Management Team members**

**Wash hands frequently and disinfect high-traffic areas on a regular basis.**

**Limit close contact between firefighters and the public to prevent exposure and spread.**



## EMERGENCY PLAN

### INCIDENT WITHIN AN INCIDENT

#### ON SCENE SUPERVISOR

**In the event of an accident or medical incident of any size, your primary responsibility is to ENSURE that the victim(s) receive prompt and effective Triage, Treatment and Transportation.**

- Conduct size-up of the incident (nature of accident, number type of resources involved, latitude and longitude location): notify incident communications center and supervisor, request assistance as needed.
- Order and coordinate medical and support response to the accident.
- Evaluate special needs (law enforcement, haz mat, etc.).
- Clear the command frequency if medical emergency; coordinate with incident communications and air attack for air medical transportation needs
- Preserve and photograph the scene for accident investigation.
- Remain aware of surroundings and the status of the main incident (delegate personnel to monitor the main fire) to ensure safety of medical treatment personnel.
- Until relieved, supervise and manage all personnel involved at the incident scene.
- **ENSURE THE MEDICAL INCIDENT REPORT IN THE INCIDENT ACTION PLAN IS BEING USED AND FOLLOWED.**

# MEDICAL PLAN (ICS 206 WF)

20 Incident/Project Name		1. Operational Period					
Whitmore Fire		Date/Time 8/09/2021 0600-1900					
2. Ambulance Services							
Name	Complete Address	Phone	Advanced Life Support (ALS) Yes No				
Colville Tribal EMS Nespelem, WA	410 10 <sup>th</sup> St. Nespelem, WA 99155	911 - Dispatch 509-634-2472 509-978-9323			x		
Lifeline Ambulance	912 Koala Ave Omak, WA 98841	911 - Dispatch 509-663-8091	x				
3. Air Ambulance Services							
Name	Phone	Type of Aircraft & Capability					
Airlift Northwest	800-426-2430 or 911	Rotor in Wenatchee					
Life Flight Network	800-232-0911	2 Rotors, 1 Fixed Wing, Spokane					
4. Hospitals							
Name Complete Address	GPS Datum – WGS 84 Coordinate Standard Degrees Decimal Minutes DD° MM.MMM' N - Lat DD° MM.MMM' W - Long		Travel Time From ICP Air Gnd		Phone	Helipad Yes No	Level of Care Facility
	Lat:		20 Min	40 Min			
Coulee Medical Center 411 Fortuyn Rd Grand Coulee, WA 99133	44°56.5186' N				509-633-1753	x	Level 4 Trauma
	Long:	119°0.4333' W					
	VHF:						
Mid-Valley Hospital 912 Koala Ave Omak, WA 98841	48°23.8336' N		40 Min	1Hr 14 min	509-826-1760	x	Level 4 Trauma
	Long:	119°32.8758' W					
	VHF:						
Confluence Health Hospital (Central Washington Hospital) 1201 S Miller St. Wenatchee, WA 98801	47°24.4340' N		1Hr 10 Min	2 Hr 30 Min	509-662-1511	x	Level 2 Trauma
	Long:	120°19.3664' W					
	VHF :						
Harborview Medical 325 9 <sup>th</sup> Ave Seattle, WA 98104	47°36.1897' N		2 Hr 15 Min	4 Hr 30 Min	541-222-6929	x	Level 1 Trauma Burn Center
	Long:	122°19.4759' W					
	VHF:						
5. Division   Branch   Group	Capability	Personnel					
Div A/W/Z/P	Medic 2 Jennel Smith O-36	Ambo 1 (ALS) E-5					
Div M	Medic 1 Lipsker O-62	Ambo 2 (BLS) E-67		Medic Justin Smith O-37			
Div L		Unstaffed					
Div C/F		REM 9 0-43					
Night Shift North		Unstaffed					
Night Shift South		Unstaffed					
Structure Protection		Unstaffed					
6. Prepared By (Medical Unit Leader)		7. Date/Time	8. Reviewed By (Safety Officer)		9. Date/Time		
Eamonn Ryan, Diana Braun, Lee Venning (T)		08/08/2021 1800			08/08/2021 1800		

# MEDICAL PLAN (ICS 206 WF)

Controlled Unclassified Information//Basic

## Medical Incident Report

**FOR A NON-EMERGENCY INCIDENT, WORK THROUGH CHAIN OF COMMAND TO REPORT AND TRANSPORT INJURED PERSONNEL AS NECESSARY.**

**FOR A MEDICAL EMERGENCY: IDENTIFY ON SCENE INCIDENT COMMANDER BY NAME AND POSITION AND ANNOUNCE "MEDICAL EMERGENCY" TO INITIATE RESPONSE FROM IMT COMMUNICATIONS/DISPATCH.**

Use the following items to communicate situation to communications/dispatch.

**1. CONTACT COMMUNICATIONS / DISPATCH (Verify correct frequency prior to starting report)**

*Ex: "Communications, Div. Alpha. Stand-by for Emergency Traffic."*

**2. INCIDENT STATUS: Provide incident summary (including number of patients) and command structure.**

*Ex: "Communications, I have a Red priority patient, unconscious, struck by a falling tree. Requesting air ambulance to Forest Road 1 at (Lat./Long.) This will be the Trout Meadow Medical, IC is TFLD Jones. EMT Smith is providing medical care."*

Severity of Emergency / Transport Priority	<input type="checkbox"/> RED / PRIORITY 1 Life or limb threatening injury or illness. Evacuation need is IMMEDIATE <i>Ex: Unconscious, difficulty breathing, bleeding severely, 2° – 3° burns more than 4 palm sizes, heat stroke, disoriented.</i> <input type="checkbox"/> YELLOW / PRIORITY 2 Serious Injury or illness. Evacuation may be DELAYED if necessary. <i>Ex: Significant trauma, unable to walk, 2° – 3° burns not more than 1-3 palm sizes.</i> <input type="checkbox"/> GREEN / PRIORITY 3 Minor Injury or illness. Non-Emergency transport <i>Ex: Sprains, strains, minor heat-related illness.</i>	
Nature of Injury or Illness & Mechanism of Injury		<i>Brief Summary of Injury or Illness (Ex: Unconscious, Struck by Falling Tree)</i>
Transport Request		<i>Air Ambulance / Short Haul/Hoist Ground Ambulance / Other</i>
Patient Location		<i>Descriptive Location &amp; Lat. / Long. (WGS84)</i>
Incident Name		<i>Geographic Name + "Medical" (Ex: Trout Meadow Medical)</i>
On-Scene Incident Commander		<i>Name of on-scene IC of Incident within an Incident (Ex: TFLD Jones)</i>
Patient Care		<i>Name of Care Provider (Ex: EMT Smith)</i>

**3. INITIAL PATIENT ASSESSMENT: Complete this section for each patient as applicable (start with the most severe patient)**

Patient Assessment: See IRPG page 106

Treatment:

**4. TRANSPORT PLAN:**

Evacuation Location (if different): (Descriptive Location (drop point, intersection, etc.) or Lat. / Long.) Patient's ETA to Evacuation Location:

Helispot / Extraction Site Size and Hazards:

**5. ADDITIONAL RESOURCES / EQUIPMENT NEEDS:**

*Example: Paramedic/EMT, Crews, Immobilization Devices, AED, Oxygen, Trauma Bag, IV/Fluid(s), Splints, Rope rescue, Wheeled litter, HAZMAT, Extrication*

**6. COMMUNICATIONS: Identify State Air/Ground EMS Frequencies and Hospital Contacts as applicable**

Function	Channel Name/Number	Receive (RX)	Tone/NAC *	Transmit (TX)	Tone/NAC *
COMMAND					
AIR-TO-GRND					
TACTICAL					

**7. CONTINGENCY: Considerations: If primary options fail, what actions can be implemented in conjunction with primary evacuation method? Be thinking ahead.**

**8. ADDITIONAL INFORMATION: Updates/Changes, etc.**

**REMEMBER:** Confirm ETA's of resources ordered. Act according to your level of training. Be Alert. Keep Calm. Think Clearly. Act Decisively.

Controlled Unclassified Information//Basic