

## MORNING BRIEFING @ 0600

Morning briefing will be a ZOOM call, use the information below to connect:

Phone: 1-669-254-5252

Meeting ID: 160 329 1397

Passcode: 252064



SCAN QR code to JOIN VIA ZOOM

## INCIDENT ACTION PLAN

# WHITMORE FIRE

August 10-11, 2021

Operational Periods

0600-1800 and 1800-0600



WA-COA-200106  
N7SC [P] (1522)  
221 KTO

Happy 'belated' Birthday Smokey!



DOWNLOAD  
IAP



SCAN TO  
CHECK IN



DOWNLOAD  
MAPS




This page intentionally left blank.



## INCIDENT OBJECTIVES (ICS 202)

<b>1. Incident Name:</b>	<b>2. Operational Period: DAY / NIGHT</b>	
WHITMORE	Date/Time From: 08/10/2021 0600      TUE	Date/Time To: 08/11/2021 0600      WED
<b>3. Objective(s):</b>		
<p>Implement risk management practices for the safety of firefighters, other responders and the public as the first priority.</p> <p>Minimize impacts to private property, critical infrastructure, timber, cultural and natural resources including water, fish, wildlife, and range land.</p> <p>Maintain and strengthen community relationships and provide timely fire information to the public and cooperators.</p> <p>Establish and maintain all current COVID-19 mitigation protocols according to CDC and agency guidelines.</p>		
<b>4. Operational Period Command Emphasis:</b>		
Implement direct suppression tactics where safe to do so to minimize fire size, protect timber values and private property.		
<b>General Situational Awareness:</b>		
Monitor the weather conditions and base all actions on current and expected fire behavior.		
<b>5. Site Safety Plan Required?</b> Yes <input type="checkbox"/> No <input checked="" type="checkbox"/>		
<b>Approved Site Safety Plan(s) Located</b>		
<b>6. Incident Action Plan</b> (the items checked below are included in this Incident Action Plan):		
<input checked="" type="checkbox"/> ICS 202 <input checked="" type="checkbox"/> ICS 203 <input checked="" type="checkbox"/> ICS 204 <input checked="" type="checkbox"/> ICS 205 <input type="checkbox"/> ICS 205A <input checked="" type="checkbox"/> ICS 206	<input type="checkbox"/> ICS 207 <input type="checkbox"/> ICS 208 <input checked="" type="checkbox"/> ICS 220 <input checked="" type="checkbox"/> Map/Chart <input checked="" type="checkbox"/> Weather Forecast/Tides/Currents	<b>Other Attachments:</b> <input type="checkbox"/> _____ <input type="checkbox"/> _____ <input type="checkbox"/> _____ <input type="checkbox"/> _____
<b>7. Prepared by:</b> HOWARD JOHNSON      Position/Title:      PSC2	Signature: <i>Howard Johnson</i>	
<b>8. Approved by Incident Commander:</b>	Name:      BOBBY SHINDELAR	Signature: <i>Bobby Shindelar</i>
<b>ICS 202</b>	<b>IAP Page</b>	Date/Time:      08/09/2021 2000

## ORGANIZATION ASSIGNMENT LIST (ICS 203)

<b>1. Incident Name:</b>		<b>2. Operational Period: DAY / NIGHT</b>	
WHITMORE		Date/Time From: 08/10/2021 0600	TUE
		Date/Time To: 08/11/2021 0600	WED
<b>3. Incident Commander(s) and Command Staff:</b>		COMMUNICATIONS UNIT	MISSY PARKER
IC/UC	BOBBY SHINDELAR	MEDICAL UNIT	EAMONN RYAN; DIANA BRAUN LEE VENNING (T)
DEPUTY		FOOD UNIT	ALEXANDER LILLA
SAFETY OFFICER	TROY CORN JACK CATES; DON WALLER (T)		
INFORMATION OFFICER	MARY BEAN ROLAND EMETAZ		
LIAISON OFFICER	SCOTT CRAWFORD		
HUMAN RESOURCE SPECIALIST	SUSIE MANEZES		
HEALTH LIAISON	LIV STECKER	<b>7. Operations Section:</b>	
		OPS SECTION CHIEF	MATT CASTLE KURT RANTA (T)
		PLANNING OPS	TONY ENGEL JEFF BOUSCHOR
<b>4. Agency/Organization Representative(s):</b>			
<b>Agency/Organization</b>	<b>Name</b>		
COLVILLE AGENCY	PHIL WAPATO		
DNR	PAT RYAN	DIVISION/GROUP	A/Z/W/P
		DIVISION/GROUP	C
		DIVISION/GROUP	F
			NIKIA HERNANDEZ
			DAN OBERG
			LARRYLEACH JAMES DICKINSON (T)
<b>5. Planning Section:</b>		DIVISION/GROUP	L
CHIEF	HOWARD JOHNSON JILL JOHNSON (T)	DIVISION/GROUP	M
RESOURCES UNIT	NATHAN JEFFRIES (VIRTUAL)		BOB HINDS
DOCUMENTATION UNIT			MIKE JACKSON SAM STEINSHOUER (T)
SITUATION UNIT	DAVE WISCHER	DIVISION/GROUP	STRUCTURE
DEMOBILIZATION UNIT	MIKE HESTON (VIRTUAL)	DIVISION/GROUP	NIGHT NORTH
		DIVISION/GROUP	NIGHT SOUTH
			JEFF PRICHER
FIRE BEHAVIOR ANALYST	DON STRAND	<b>7b. Air Operations Branch:</b>	
GIS SPECIALIST	SHAWN BUSHNELL MIKE TONKEL (T)	AIR OPS BRANCH DIRECTOR	PAUL BALFOUR
TECHNOLOGY SUPPORT SPECIALIST	GEORGE JENKINS	AIR ATTACK SUPERVISOR	
INCIDENT METEOROLOGIST	BOB TOBIN	AIR SUPPORT SUPERVISOR	TIM LYDA
		AIR TANKER COORDINATOR	
<b>6. Logistics Section:</b>		<b>8. Finance/Administration Section:</b>	
CHIEF	DAN SOPTICH	CHIEF	CHERI FULLER CHRISTINA GOEBEL (T)
DEPUTY	KEVIN HAUGHTON	TIME UNIT	CAROL LONG
SUPPLY UNIT	JOHN KAUPA	COMPENSATION UNIT	CHERI FULLER
FACILITIES UNIT	KAREN ZIRKLE	PROCUREMENT UNIT	MARK BOHNET
GROUND SUPPORT UNIT	DAVE HARSH	COST UNIT	KATHLEEN HIGH (VIRTUAL)
<b>9. Prepared By:</b>	<b>Name:</b> JILL JOHNSON	<b>Position/Title:</b> PSC2 (T)	<b>Signature:</b> 
ICS 203	IAP Page	<b>Date/Time:</b> 08/09/2021 2000	

## Fire Weather Forecast

**FORECAST NO:** 6  
**PREDICTION FOR:** Tuesday-Tuesday night  
**Shift Date:** August 10-11, 2021 0600-0600  
**TIME AND DATE**  
**FORECAST ISSUED:** 8/9/2021 at 2000

**INCIDENT:** Whitmore Fire  
**UNIT:** Colville Reservation  
**SIGNED:** Bob Tobin  
**Incident Meteorologist (IMET)**

---

**Weather Discussion:** High pressure will continue to strengthen through the week. Temperatures will warm and relative humidity become drier each day through Friday. A surge of moisture well up in the atmosphere will result in increasing high clouds through the day Tuesday. This may put a cap on high temperatures. There will also be a north push down the Okanogan Canyon Wednesday that will continue through Wednesday night and into Thursday. Monsoon moisture is expected to move north along the Cascades Friday night for a low end chance of nocturnal thunderstorms.

### **WEATHER FORECAST:**

#### **Today:**

**SKY/WEATHER:** Variable high clouds and warmer.  
**High Temperature...**83-88 above 3000 feet and 87-92 below 3000 feet.  
**24hr Change...**Up 7-10.  
**Min RH.....**25-30 % above 3000 feet and 20-25% below 3000 feet.  
**24hr Change...**Down 3-5%  
**20-FOOT WINDS:** Northwest 8-12 mph with gusts to 15.  
**CWR ( $\geq 0.10''$ )....**0% **LAL....**1 **Haines Index...2 (Very Low)** **Mixing Height...7300 ft AGL**

#### **Tonight:**

**Weather:** Clear.  
**Low Temperature...**64-68.  
**Max RH.....**45-55%  
**20-FOOT WINDS:** West 8-10 mph...becoming north-northeast 4-8 mph after midnight.  
**CWR ( $\geq 0.10''$ )....**0% **LAL...1.**

#### **Wednesday:**

**SKY/WEATHER:** Partly to mostly cloudy.  
**High Temperature...**88-92 above 3000 feet and 93-99 below 3000 feet.  
**Min RH.....**22-27% above 3000 feet...20-25% below 3000 feet  
**20-FOOT WINDS:** North 10-14 mph with gusts to 20 mph. Winds will last through the night.  
**CWR ( $\geq 0.10''$ )....** 0% **LAL....**1 **Haines Index...2 ( Very Low)** **Mixing Height...10000 ft AGL**

#### **Extended Outlook**

**Thursday...**Sunny. Low 66-70...High 90-100. Min RH: 14-20% North-northeast 10-12 mph.  
**Friday...**Partly cloudy. Low: 68-72...High: 94-103. Min RH: 10-20% Winds: Southwest 8-12 mph with gusts to 15 mph.

## FIRE BEHAVIOR FORECAST

<b>FORECAST NUMBER:</b> 6	<b>TYPE OF FIRE:</b> Wildland
<b>FIRE NAME:</b> Whitmore	<b>OPERATIONAL PERIOD:</b> Aug 10-11, 2021 Day-Night-Shift
<b>DATE ISSUED:</b> Aug 9, 2021	<b>TIME ISSUED:</b> 2000
<b>UNIT:</b> WA-COA	Don Strand FBAN

### INPUTS

**WEATHER SUMMARY:** Variable high clouds and warmer. Max temp 92, Min RH 22%. Winds-Northwest 8-12 mph with gusts to 15 mph. LAL... 1

### OUTPUTS

#### FIRE BEHAVIOR

##### GENERAL:

- Fire behavior will be active today. Expect fire behavior potential to increase in the early afternoon with fire to remain active to after dark. In unlined areas, expect backing and flanking will upslope runs. There are plenty of ladder fuels so single and group torching with spotting anticipated. Where there is wind/slope alignment short crown runs likely.
- Fuels consist mixed conifer and pine with grass and brush. Logging slash is in scattered locations. There are some areas of regeneration from past timber harvest and 5 to 10-year-old fire scar regen with grass and brush understory. In some areas, grass is heavily grazed. Much of the lower elevations are covered with grass and sagebrush with timbered stringers in the deep draws.
- Most spotting will be short range and also from roll outs on steeper ground. Spotting distance will approach about 1000 ft although with periodic wind gusts to 15 mph, watch for spots up to 0.2 miles.
- Probability of Ignition will be near 70% unshaded and 50% shaded during the warmest part of the day.

##### SPECIFIC:

**DIV A/Z/W/P:** This portion of the fire will be the warmest and driest portion of the fire. Continue to watch for heat in dozer berms near unburned fuels.

**DIV C:** Light grass and brush fuels will readily available for fire spread. Areas of dirty burns near fire lines have potential to flare up spot across fire lines. Potential for roll outs on steeper slopes. Winds may be squirrely due to the influence of Boot Mtn and Omak Lake. Any spot fires in the adjacent fuels will rapidly spread.

**DIV F:** As the fire edge approaches Road 103 in the drainage, smoke drift may cross road dropping embers into the green initiating spot fires. As the head of the fire pushes the ridge NW of DP 120, potential for spotting on to the NE to E aspects is likely.

**DIV L:** Pay attention to local winds with any burnout. Expect torching with spotting.

**DIV M:** Watch for torching and spotting. Along Lower Coyote Creek, any flare up may spot into lighter fuels and may be influenced by the west to northwest wind.

**Initial Attack:** In the event we respond to a new start, remember light flashy fuels respond quickly to changes in wind speed, slope and/or directions.

**NIGHT:** Any fire activity remaining from day shift will continue to be active well after dark due to forecasted poor to moderate RH recovery overnight'.

**AIR OPERATIONS:** Watch for turbulence in the complex terrain.

### SAFETY

- **Take weather obs periodically to determine fine dead fuel moistures to help maintain SA.**
- **Upslope up-valley winds with northwest winds over ridges – pay attention to smoke drift and potential for spotting along flanks.**
- **On steeper slopes, roll outs of burning material may cause spot fires that burn back up slope.**
- **Burnout – watch for wind directions and speed. Pay attention to smoke drift across fire lines potentially causing spots.**

# Safety Message

10-11 August 2021

**INCIDENT: Whitmore**

**OPERATIONAL PERIOD: 0600-0600**

## TOPICS:


### **WARMER WEATHER/INCREASED FIRE BEHAVIOR**

Temperatures will rise and RH will drop today. PIG and ERC will be on the rise. Pay close attention to unburned pockets of fuel for rate of spread and spotting potential. Maintain awareness of fire behavior on new starts if supporting local IA. Many fatalities and injuries occur in weather transition days where increased fire behavior is observed in light fuels.

### **EXTRACTION**

Review extraction routes and methods. Identify and become familiar with equipment to facilitate extraction over rough terrain. Recognize precautions that need to be taken for different types of injuries.

**HEAT EXHAUSTION OR HEAT STROKE?**

<p><b>HEAT EXHAUSTION SYMPTOMS</b></p> <ol style="list-style-type: none"><li>1. Faint or dizzy</li><li>2. Excessive sweating</li><li>3. Cool, pale, clammy skin</li><li>4. Nausea, vomiting</li><li>5. Rapid, weak pulse</li><li>6. Muscle cramps</li></ol> <p><b>HOW TO TREAT IT</b></p> <ol style="list-style-type: none"><li>1. Move to cooler location</li><li>2. Drink water</li><li>3. Take a cool shower or use cold compresses</li></ol>		<p><b>HEAT STROKE SYMPTOMS</b></p> <ol style="list-style-type: none"><li>1. Throbbing headache</li><li>2. No sweating</li><li>3. Body temp above 103° Red, hot, dry skin</li><li>4. Nausea, vomiting</li><li>5. Rapid, strong pulse</li><li>6. May lose consciousness</li></ol> <p><b>HOW TO TREAT IT</b></p> <ol style="list-style-type: none"><li>1. Get emergency help</li><li>2. Keep cool until treated</li></ol>
--	---	--

**SAFETY OFFICER: Jack Cates, Troy Corn, Don Waller (T)**

# Deliberate Risk Assessment-Hazard Summary

## 10-11 August 2021

Hazard	Mitigation	Post Risk
<b>Unburned Fuels/Firing Ops</b>	Ensure management action points are implemented and followed. Weather updates as needed during burning operations. Locate indirect firelines to minimize the amount of unburned fuels. Ensure communications between all firing operations. Establish road security at all firing sites. Follow approved firing plan for unburned fuels.	Moderate
<b>Snags</b>	Use avoidance to limit exposure time. Snag ahead to avoid exposure. Use qualified fallers, blasting, or alternate methods if needed. Conduct on-going risk analysis of all work areas. Follow Hazard Tree Safety Guidelines (IRPG page 22).	<b>High</b>
<b>Aircraft</b>	Utilize Air Attack. Ensure all resources are a safe distance from all bucket and retardant drops. Utilize air to ground primary radio channel.	<b>High</b>
<b>Steep Terrain/Gravity</b>	Do not work crews above or below each other. Post lookouts for rolling material. Watch footing in loose soil, rock and around vegetation. Do not work below heavy equipment. Scout and identify travel routes.	Moderate
<b>Physical Factors</b>	Maintain hydration schedule. Closely monitor work rate and implement rest periods. Maintain nutrition. Ensure adequate work/rest.	Moderate
Extraction Time	Identify medivac sites and helispots. Initiate ground transport to accident site. Review IWI protocol to ensure familiarity.	<b>High</b>
Transportation	Signing of all incident roads that provide access to divisions. Practice defensive driving. In local communities obey the posted speed limits. Use reader boards to control entry as needed. Identify and evaluate contingency and alternate escape and travel routes.	<b>High</b>
Heavy Equipment	Post lookouts around equipment work areas. Establish communications with equipment boss and operator. Do not work down slope from equipment.	<b>High</b>
Transmission/Power Lines	Maintain one span radius from any downed line or compromised pole, be aware of smoke conductivity, report any downed lines or burning poles.	<b>High</b>
Initial Attack	Ensure identified IA resources are briefed of expectations and ensure communication plan is provided. Ensure resources are briefed on IA command structure. Provide identified crews with area maps.	Moderate
Environmental Factors	Assess for known allergies and report to medical personnel. Obtain Bee/wasp spray and yellow jacket traps. Maintain an awareness of livestock and rattlesnakes.	Moderate
Fire Behavior	Be aware of burn windows and weather impacts and min/max RH for flashy fuels/local conditions. Report changes to FBAN and IMET.	Moderate
Communication	Evaluate for dead zones prior to engagement. Utilize human repeaters as needed. Ensure accountability of resources in problem areas. Be prepared if local traffic maximizes air time.	Moderate
Viral Transmission Mitigations, Communicable Disease	Maintain isolated ICP (remote briefings, etc), maintain social distancing, and wear face coverings in accordance with CDC recommendations. Report and isolate if not feeling well.	Low
Public Interaction	<b>Place new road closures as necessary and maintain current closures. Provide signage on all perimeter roads warning of closures and fire activity. Request tribal police presence on SR155 access roads, Omak Lake and Columbia River Road. Maintain awareness of evacuation areas and provide accurate information dissemination.</b>	Low



**Division/Group Assignment List (ICS 204 WF)**  
**Controlled Unclassified Information//Basic**

<b>1. Incident Name:</b>			<b>3.</b>			
WHITMORE			<b>Branch:</b>		<b>Division/Group</b>	
<b>2. Operational Period: DAY / NIGHT</b>					<b>A/Z/W/P</b>	
Date/Time From: 08/10/2021 0600 TUE		Date/Time To: 08/11/2021 0600 WED				
<b>4. Operations Personnel</b>						
<b>OPERATIONS CHIEF</b>		MATT CASTLE; KURT RANTA (T) TONY ENGEL; JEFF BOUSCHOR		<b>DIVISION/GROUP SUPERVISOR</b>		NIKIA HERNANDEZ
<b>SAFETY OFFICER</b>		TROY CORN; JACK CATES DON WALLER (T)		<b>AIR OPERATIONS BRANCH DIRECTOR</b>		PAUL BALFOUR
<b>5. Resources Assigned this Period</b>						
Strike Team / Task Force / Resource Designator		LWD	Leader	Number Persons	Drop Off PT./Time	Pick Up PT./Time
E-193 ENG6 THUNDERBOLT		08/18	TOBY YAZIE	2	ICP/0600	ICP/1800
<b>6. Control Operations/Work Assignments:</b>						
<p>TASK: Secure fire North and East of Columbia River Road, South of Omak Lake to Division break. Provide for Structure Protection on Columbia River Road, Kartar Valley and Omak Lake road.</p> <p>PURPOSE: Protect property and resources; limit further fire spread to the West.</p> <p>END STATE: Fire is contained south of Omak Lake and East of Columbia River road and structures are not threatened.</p>						
<b>7. Special Instructions:</b>						
<b>8. Division/Group Communication Summary</b>						
Function	Channel	RX Frequency N/W	RX Tone/NAC	TX Frequency N/W	TX Tone/NAC	Mode
TACTICAL	1	168.0500	146.2	168.0500	146.2	A
COMMAND	7	173.9250	146.2	169.8375	146.2	A
COMMAND	9	169.7250	88.5	164.2500	100.0	A
AIR TO GROUND	14	171.8625		171.8625		A
<b>9. Prepared By (Resource Unit Leader)</b>			<b>Approved By (Planning Section Chief)</b>		<b>Date</b>	<b>Time</b>
NATHAN JEFFRIES			HOWARD JOHNSON		08/09/2021	2000

**Division/Group Assignment List (ICS 204 WF)**  
**Controlled Unclassified Information//Basic**

<b>1. Incident Name:</b>			<b>3.</b>			
WHITMORE			<b>Branch:</b>		<b>Division/Group</b>	
<b>2. Operational Period: DAY / NIGHT</b>					<b>C</b>	
Date/Time From: 08/10/2021 0600 TUE		Date/Time To: 08/11/2021 0600 WED				
<b>4. Operations Personnel</b>						
<b>OPERATIONS CHIEF</b>		MATT CASTLE; KURT RANTA (T) TONY ENGEL; JEFF BOUSCHOR		<b>DIVISION/GROUP SUPERVISOR</b>		DANIEL OBERG
<b>SAFETY OFFICER</b>		TROY CORN; JACK CATES DON WALLER (T)		<b>AIR ATTACK SUPERVISOR</b>		PAUL BALFOUR
<b>5. Resources Assigned this Period</b>						
Strike Team / Task Force / Resource Designator		LWD	Leader	Number Persons	Drop Off PT./Time	Pick Up PT./Time
O-174 SOF2		08/24	PAUL BRNA	1	ICP/0600	ICP/1800
O-11 TFLD		08/09	DAVE HYLTON	1	ICP/0600	ICP/1800
O-12 HEQB		08/21	TRAVIS BRUCH	1	ICP/0600	ICP/1800
C-3 HC2I MOCC INTERAGENCY CREW #4		08/21	TIMOTHY PERREN	20	ICP/0600	ICP/1800
E-7 ENG6 OREGON WOODS, INC.		08/19	BEN COOK	3	ICP/0600	ICP/1800
E-179 ENG3 WILDFIRE SUPPORT TEAM (R&R, RETURN 8/12)		08/25	JOEY DEMARTINO	3	ICP/0600	ICP/1800
E-18 WTS2 PORTABLE ROCK PRODUCTION		08/19	JIMMY POWELL	1	ICP/0600	ICP/1800
E-2 DOZ2 SILVER-NICKEL LOGGING LLC		08/19	TOBY EPPERSON	2	ICP/0600	ICP/1800
E-5 AMBU1 MED TRANSPORT (ALS)		08/21	JENNIFER BOSTWICK	2	ICP/0600	ICP/1800
O-37 EMPF MEDIC 2		08/21	JENNEL SMITH	1	ICP/0600	ICP/1800
O-175 EMT 2		08/11	KADY LUKOWICZ	1	ICP/0600	ICP/1800
<b>6. Control Operations/Work Assignments:</b>						
TASK - Mop up and secure completed fireline, scout and establish new firelines as necessary to keep fire East of Rattlesnake Creek and Peter Flat						
PURPOSE - Protect property and resources; limit further fire spread to the West.						
END STATE - Fireline is established and secured and fire is contained East of Rattlesnake creek and Peter.						
<b>7. Special Instructions:</b>						
<b>8. Division/Group Communication Summary</b>						
Function	Channel	RX Frequency N/W	RX Tone/NAC	TX Frequency N/W	TX Tone/NAC	Mode
COMMAND						
TACTICAL						
LOGISTICS						
AIR TO GROUND						
<b>9. Prepared By (Resource Unit Leader)</b>			<b>Approved By (Planning Section Chief)</b>		<b>Date</b>	<b>Time</b>
NATHAN JEFFRIES			HOWARD JOHNSON		08/09/2021	2000

**Division/Group Assignment List (ICS 204 WF)**  
**Controlled Unclassified Information//Basic**

<b>1. Incident Name:</b>			<b>3.</b>			
WHITMORE			<b>Branch:</b>		<b>Division/Group</b>	
<b>2. Operational Period: DAY / NIGHT</b>					<b>F</b>	
Date/Time From: 08/10/2021 0600 TUE		Date/Time To: 08/11/2021 0600 WED				
<b>4. Operations Personnel</b>						
<b>OPERATIONS CHIEF</b>		MATT CASTLE; KURT RANTA (T) TONY ENGEL; JEFF BOUSCHOR		<b>DIVISION/GROUP SUPERVISOR</b>		LARRY LEACH JAMES DICKINSON (T)
<b>SAFETY OFFICER</b>		TROY CORN; JACK CATES DON WALLER (T)		<b>AIR ATTACK SUPERVISOR</b>		PAUL BALFOUR
<b>5. Resources Assigned this Period</b>						
Strike Team / Task Force / Resource Designator		LWD	Leader	Number Persons	Drop Off PT./Time	Pick Up PT./Time
O-1.61 SOF2		08/20	JOSHUA NORTHRUP	1	ICP/0600	ICP/1800
C-7 HC1 LA GRANDE IHC		08/20	JOSH DIACETIS	20	ICP/0600	ICP/1800
C-1 HC2 GRIZZLY FIREFIGHTERS INC		08/21	KARLA BEJAR	20	ICP/0600	ICP/1800
E-8 ENG6 NM-EMP NPS		08/22	LAFE SACKETT	6	ICP/0600	ICP/1800
E-191 ENG4 WOODPECKER 5		08/11	JOSEPH BOIANOFF	3	ICP/0600	ICP/1800
E-17 WTS2 FYR FLY LTD #68		08/19	LINN LAMB	1	ICP/0600	ICP/1800
E-19 WTS2 BOMBEROS WATER LLC		08/19	KURT FIGG-HOBLYN	1	ICP/0600	ICP/1800
E-187 WTS2 OWENS		08/12	FRANKLIN OWENS	1	ICP/0600	ICP/1800
E-20 DOZ2 BLM		08/22	BLAINE JEWETT	1	ICP/0600	ICP/1800
E-5000 DOZ4 SCFD9		08/20	MICHAEL WOLF	1	ICP/0600	ICP/1800
O-43 REMS 9 SPOKANE COUNTY FD9		08/19	CLINT JUNTUNEN	4	ICP/0600	ICP/1800
<b>6. Control Operations/Work Assignments:</b>						
TASK - Secure fire line North from DIVS A/C break to Jim Creek road. Limit fire spread in Dan Nanson Basin. PURPOSE - Protect property and resources; limit further fire spread to the North and West. END STATE - Fireline is established and secured and fire is contained East of Peter Flat and Dan Nason Basin.						
<b>7. Special Instructions:</b>						
<b>8. Division/Group Communication Summary</b>						
Function	Channel	RX Frequency N/W	RX Tone/NAC	TX Frequency N/W	TX Tone/NAC	Mode
TACTICAL	2	168.2000	146.2	168.2000	146.2	A
COMMAND	7	173.9250	146.2	169.8375	146.2	A
COMMAND	9	169.7250	88.5	164.2500	100.0	A
AIR TO GROUND	14	171.8625		171.8625		A
<b>9. Prepared By (Resource Unit Leader)</b>			<b>Approved By (Planning Section Chief)</b>		<b>Date</b>	<b>Time</b>
NATHAN JEFFRIES			HOWARD JOHNSON		08/09/2021	2000

**Division/Group Assignment List (ICS 204 WF)**  
**Controlled Unclassified Information//Basic**

<b>1. Incident Name:</b>			<b>3.</b>			
WHITMORE			<b>Branch:</b>		<b>Division/Group</b>	
<b>2. Operational Period:</b> DAY / NIGHT					L	
Date/Time From: 08/10/2021 0600 TUE		Date/Time To: 08/11/2021 0600 WED				
<b>4. Operations Personnel</b>						
<b>OPERATIONS CHIEF</b>		MATT CASTLE; KURT RANTA (T) TONY ENGEL; JEFF BOUSCHOR		<b>DIVISION/GROUP SUPERVISOR</b>		ROBERT HINDS
<b>SAFETY OFFICER</b>		TROY CORN; JACK CATES DON WALLER (T)		<b>AIR OPERATIONS BRANCH DIRECTOR</b>		PAUL BALFOUR
<b>5. Resources Assigned this Period</b>						
Strike Team / Task Force / Resource Designator		LWD	Leader	Number Persons	Drop Off PT./Time	Pick Up PT./Time
O-1.63 SOF2		08/20	JOHN BARNES	1	ICP/0600	ICP/1800
O-109 TFLD		08/23	IZAAK MCHENRY	1	ICP/0600	ICP/1800
O-84 HEQB		08/22	REESE SEWELL	1	ICP/0600	ICP/1800
O-9 FALM SWEDBERG CONTR **		08/16	JEFALD WULFF	2	ICP/0600	ICP/1800
C-9 HC2I FLAGSTAFF IHC		08/22	MARK ANDERSON	22	ICP/0600	ICP/1800
E-83 ENG6 TIMBERMANS TREE SERVICES		08/22	MARCUS ENICK	3	ICP/0600	ICP/1800
E-102 ENG3 ELEPHANT AHEAD VOL FD		08/18	CHRIS ANTAIS	4	ICP/0600	ICP/1800
E-103 ENG6 GE FORESTRY INC		08/22	ALVARO GONZALEZ	3	ICP/0600	ICP/1800
E-78 WTS2 COWBOY FIRE LLC		08/21	GREGORY WITSMAN	1	ICP/0600	ICP/1800
E-79 WTS2 SUGDEN FIRE		08/22	THOMAS SUGDEN	1	ICP/0600	ICP/1800
E-196 DOZ2 IRON TRIANGLE		08/09	RICK SAUL	2	ICP/0600	ICP/1800
E-96 DOZ4 OWENS FREIGHT		08/22	RON ANDERSON	2	ICP/0600	ICP/1800
E-184 DOZ3 TUNK CREEK		08/13	DARREL GREEN	2	ICP/0600	ICP/1800
E-67 AMBU2 LINCOLN COUNTY (BLS)		08/21	CORREY KRAIS	2	ICP/0600	ICP/1800
<b>8. Division/Group Communication Summary</b>						
Function	Channel	RX Frequency N/W	RX Tone/NAC	TX Frequency N/W	TX Tone/NAC	Mode
TACTICAL	3	168.6000	146.2	168.6000	146.2	A
COMMAND	7	173.9250	146.2	169.8375	146.2	A
COMMAND	9	169.7250	88.5	164.2500	100.0	A
AIR TO GROUND	14	171.8625		171.8625		A
<b>9. Prepared By (Resource Unit Leader)</b>			<b>Approved By (Planning Section Chief)</b>		<b>Date</b>	<b>Time</b>
NATHAN JEFFRIES			HOWARD JOHNSON		08/09/2021	2000

**Division/Group Assignment List (ICS 204 WF)**  
**Controlled Unclassified Information//Basic**

<b>1. Incident Name:</b>		<b>3.</b>				
WHITMORE		<b>Branch:</b>		<b>Division/Group</b>		
<b>2. Operational Period:</b>		<b>DAY / NIGHT</b>				
Date/Time From: 08/10/2021 0600 TUE		Date/Time To: 08/11/2021 0600 WED		L		
<b>4. Operations Personnel</b>						
<b>OPERATIONS CHIEF</b>		MATT CASTLE; KURT RANTA (T) TONY ENGEL; JEFF BOUSCHOR		<b>DIVISION/GROUP SUPERVISOR</b>		ROBERT HINDS
<b>SAFETY OFFICER</b>		TROY CORN; JACK CATES DON WALLER (T)		<b>AIR OPERATIONS BRANCH DIRECTOR</b>		PAUL BALFOUR
<b>5. Resources Assigned this Period</b>						
Strike Team / Task Force / Resource Designator	LWD	Leader	Number Persons	Drop Off PT./Time	Pick Up PT./Time	
<b>6. Control Operations/Work Assignments:</b>						
TASK - Scout and establish firelines to keep fire South and East of Highway 155. PURPOSE - Protect property and resources; limit further fire spread to the North. END STATE - Fireline is established and secured and fire is contained South of Highway 155.						
<b>7. Special Instructions:</b>						
** Resource is assigned to the Summit Trail fire and is on loan to Whitmore fire.						
<b>8. Division/Group Communication Summary</b>						
Function	Channel	RX Frequency N/W	RX Tone/NAC	TX Frequency N/W	TX Tone/NAC	Mode
TACTICAL	3	168.6000	146.2	168.6000	146.2	A
COMMAND	7	173.9250	146.2	169.8375	146.2	A
COMMAND	9	169.7250	88.5	164.2500	100.0	A
AIR TO GROUND	14	171.8625		171.8625		A
<b>9. Prepared By (Resource Unit Leader)</b>		<b>Approved By (Planning Section Chief)</b>		<b>Date</b>	<b>Time</b>	
NATHAN JEFFRIES		HOWARD JOHNSON		08/09/2021	2000	

**Division/Group Assignment List (ICS 204 WF)**  
**Controlled Unclassified Information//Basic**

<b>1. Incident Name:</b>			<b>3.</b>			
WHITMORE			<b>Branch:</b>		<b>Division/Group</b>	
<b>2. Operational Period: DAY / NIGHT</b>					<b>M</b>	
Date/Time From: 08/10/2021 0600 TUE		Date/Time To: 08/11/2021 0600 WED				
<b>4. Operations Personnel</b>						
<b>OPERATIONS CHIEF</b>		MATT CASTLE; KURT RANTA (T) TONY ENGEL; JEFF BOUSCHOR		<b>DIVISION/GROUP SUPERVISOR</b>		MIKE JACKSON SAM STEINSHOUER (T)
<b>SAFETY OFFICER</b>		TROY CORN; JACK CATES DON WALLER (T)		<b>AIR OPERATIONS BRANCH DIRECTOR</b>		PAUL BALFOUR
<b>5. Resources Assigned this Period</b>						
Strike Team / Task Force / Resource Designator		LWD	Leader	Number Persons	Drop Off PT./Time	Pick Up PT./Time
O-1.63 SOF2		08/19	JOHN BARNES	1	ICP/0600	ICP/1800
C-2 HC2 PACIFIC COAST CONTRACTING		08/13	NORBERTO PANTELEON	20	ICP/0600	ICP/1800
C-13 HC2 OC FORESTRY INC		08/21	VALINE COLIN	20	ICP/0600	ICP/1800
E-11 ENG6 CONNECTICUT FIRE GROUP		08/21	JOE BURNHAM	4	ICP/0600	ICP/1800
E-85 ENG6 OC FORESTRY		08/21	AARON ABEL	3	ICP/0600	ICP/1800
E-131 ENG6 CHAFFEE CO FPD		08/09	BRIAN WELCH	3	ICP/0600	ICP/1800
E-174 ENG6 MARYLAND FS TYPE 6		08/14	SERGIO CASTILLO	4	ICP/0600	ICP/1800
E-192 ENG6 MID-COLUMBIA RESOURCES LLC		08/17	DAVID JOHNSON	3	ICP/0600	ICP/1800
E-185 WTS2 IA CONSTRUCTION & FIRE		08/13	TERRY BURR	1	ICP/0600	ICP/1800
E-76 WTS2 LEVI PICARD		08/21	LEVI PICARD	2	ICP/0600	ICP/1800
E-186 WTS2 BOULDER CREEK		08/11	JOE SCHOENMAKERS	1	ICP/0600	ICP/1800
E-130 SKG3 TUNK CREEK LLC		08/22	DYLAN GREEN	2	ICP/0600	ICP/1800
O-36 EMPF MEDIC 3		08/21	ROBERT SMITH	1	ICP/0600	ICP/1800
O-62 EMPF MEDIC 1		08/20	JOHN LIPSKER	1	ICP/0600	ICP/1800
<b>8. Division/Group Communication Summary</b>						
Function	Channel	RX Frequency N/W	RX Tone/NAC	TX Frequency N/W	TX Tone/NAC	Mode
TACTICAL	4	166.7250	146.2	166.7250	146.2	A
COMMAND	7	173.9250	146.2	169.8375	146.2	A
COMMAND	9	169.7250	88.5	164.2500	100.0	A
AIR TO GROUND	14	171.8625		171.8625		A
<b>9. Prepared By (Resource Unit Leader)</b>			<b>Approved By (Planning Section Chief)</b>		<b>Date</b>	<b>Time</b>
NATHAN JEFFRIES			HOWARD JOHNSON		08/09/2021	2000

**Division/Group Assignment List (ICS 204 WF)**  
**Controlled Unclassified Information//Basic**

<b>1. Incident Name:</b>			<b>3.</b>			
WHITMORE			<b>Branch:</b>		<b>Division/Group</b>	
<b>2. Operational Period: DAY / NIGHT</b>					<b>M</b>	
Date/Time From: 08/10/2021 0600 TUE		Date/Time To: 08/11/2021 0600 WED				
<b>4. Operations Personnel</b>						
<b>OPERATIONS CHIEF</b>		MATT CASTLE; KURT RANTA (T) TONY ENGEL; JEFF BOUSCHOR		<b>DIVISION/GROUP SUPERVISOR</b>		MIKE JACKSON SAM STEINSHOUER (T)
<b>SAFETY OFFICER</b>		TROY CORN; JACK CATES DON WALLER (T)		<b>AIR OPERATIONS BRANCH DIRECTOR</b>		PAUL BALFOUR
<b>5. Resources Assigned this Period</b>						
Strike Team / Task Force / Resource Designator		LWD	Leader	Number Persons	Drop Off PT./Time	Pick Up PT./Time
<b>6. Control Operations/Work Assignments:</b>						
<p>TASK - Anchor and flank fire west of Lower Coyote Creek Road north from Colombia River Road and division M/P break  PURPOSE - Protect property and natural resources east of Lower Coyote Creek Road.  END STATE - Fire is contained south of Coyote Creek Road. Structures south of the fire area are not threatened.</p>						
<b>7. Special Instructions:</b>						
Protect cultural resources; contact resource advisor as needed.						
<b>8. Division/Group Communication Summary</b>						
Function	Channel	RX Frequency N/W	RX Tone/NAC	TX Frequency N/W	TX Tone/NAC	Mode
TACTICAL	4	166.7250	146.2	166.7250	146.2	A
COMMAND	7	173.9250	146.2	169.8375	146.2	A
COMMAND	9	169.7250	88.5	164.2500	100.0	A
AIR TO GROUND	14	171.8625		171.8625		A
<b>9. Prepared By (Resource Unit Leader)</b>			<b>Approved By (Planning Section Chief)</b>		<b>Date</b>	<b>Time</b>
NATHAN JEFFRIES			HOWARD JOHNSON		08/09/2021	2000

**Division/Group Assignment List (ICS 204 WF)**  
**Controlled Unclassified Information//Basic**

<b>1. Incident Name:</b>			<b>3.</b>			
WHITMORE			<b>Branch:</b>		<b>Division/Group</b>	
<b>2. Operational Period: DAY / NIGHT</b>					<b>STRUCTURE GROUP</b>	
Date/Time From: 08/10/2021 0600 TUE		Date/Time To: 08/11/2021 0600 WED				
<b>4. Operations Personnel</b>						
<b>OPERATIONS CHIEF</b>		MATT CASTLE; KURT RANTA (T) TONY ENGEL; JEFF BOUSCHOR		<b>DIVISION/GROUP SUPERVISOR</b>		BRANDYN HARVEY
<b>SAFETY OFFICER</b>		TROY CORN; JACK CATES DON WALLER (T)		<b>AIR ATTACK SUPERVISOR</b>		PAUL BALFOUR
<b>5. Resources Assigned this Period</b>						
Strike Team / Task Force / Resource Designator		LWD	Leader	Number Persons	Drop Off PT./Time	Pick Up PT./Time
<b>6. Control Operations/Work Assignments:</b>						
<p>TASK - Prepare structure protection plan for structures on the Highway 155 corridor  PURPOSE - Identify structures, resources needed and strategic plan for structure protection.  END STATE - Plan is developed and implemented to protect structures in the Highway 155 corridor.</p>						
<b>7. Special Instructions:</b>						
<b>8. Division/Group Communication Summary</b>						
Function	Channel	RX Frequency N/W	RX Tone/NAC	TX Frequency N/W	TX Tone/NAC	Mode
TACTICAL	6	168.2500	146.2	168.2500	146.2	A
COMMAND	7	173.9250	146.2	169.8375	146.2	A
COMMAND	9	169.7250	88.5	164.2500	100.0	A
AIR TO GROUND	14	171.8625		171.8625		A
<b>9. Prepared By (Resource Unit Leader)</b>			<b>Approved By (Planning Section Chief)</b>		<b>Date</b>	<b>Time</b>
NATHAN JEFFRIES			HOWARD JOHNSON		08/09/2021	2000



**Division/Group Assignment List (ICS 204 WF)**  
**Controlled Unclassified Information//Basic**

<b>1. Incident Name:</b>			<b>3.</b>			
WHITMORE			<b>Branch:</b>		<b>Division/Group</b>	
<b>2. Operational Period: DAY / NIGHT</b>					<b>NIGHT NORTH</b>	
Date/Time From: 08/10/2021 0600 TUE		Date/Time To: 08/11/2021 0600 WED				
<b>4. Operations Personnel</b>						
<b>OPERATIONS CHIEF</b>		MATT CASTLE; KURT RANTA (T) TONY ENGEL; JEFF BOUSCHOR		<b>DIVISION/GROUP SUPERVISOR</b>		NICK SCHREINER
<b>SAFETY OFFICER</b>		TROY CORN; JACK CATES DON WALLER (T)		<b>AIR ATTACK SUPERVISOR</b>		PAUL BALFOUR
<b>5. Resources Assigned this Period</b>						
Strike Team / Task Force / Resource Designator		LWD	Leader	Number Persons	Drop Off PT./Time	Pick Up PT./Time
O-76 SOF2		08/21	RICHARD MCCONNELL	1	ICP/1800	ICP/0600
E-92 ENG6 JD FORESTRY REGION 6 NWCC		08/22	FELIX DROESCH	3	ICP/1800	ICP/0600
E-105 ENG6 NW FIRE PROTECTION DIST		08/22	JAMES ESTLE	3	ICP/1800	ICP/0600
O-176 EMT 1		08/09	REBECCA WELLMAN	1	ICP/1800	ICP/0600
<b>6. Control Operations/Work Assignments:</b>						
TASK - Patrol and secure structures as needed. PURPOSE - Protect property and resources, Prevent further damage and loss to structures. END STATE - Structures are protected with no additional structure loss.						
<b>7. Special Instructions:</b>						
<b>8. Division/Group Communication Summary</b>						
Function	Channel	RX Frequency N/W	RX Tone/NAC	TX Frequency N/W	TX Tone/NAC	Mode
TACTICAL	5	166.7750	146.2	166.7750	146.2	A
COMMAND	7	173.9250	146.2	169.8375	146.2	A
COMMAND	9	169.7250	88.5	164.2500	100.0	A
AIR TO GROUND	14	171.8625		171.8625		A
<b>9. Prepared By (Resource Unit Leader)</b>			<b>Approved By (Planning Section Chief)</b>		<b>Date</b>	<b>Time</b>
NATHAN JEFFRIES			HOWARD JOHNSON		08/09/2021	2000

**Division/Group Assignment List (ICS 204 WF)**  
**Controlled Unclassified Information//Basic**

<b>1. Incident Name:</b>			<b>3.</b>			
WHITMORE			<b>Branch:</b>		<b>Division/Group</b>	
<b>2. Operational Period: DAY / NIGHT</b>					<b>NIGHT SOUTH</b>	
Date/Time From: 08/10/2021 0600 TUE		Date/Time To: 08/11/2021 0600 WED				
<b>4. Operations Personnel</b>						
<b>OPERATIONS CHIEF</b>		MATT CASTLE; KURT RANTA (T) TONY ENGEL; JEFF BOUSCHOR		<b>DIVISION/GROUP SUPERVISOR</b>		JEFF PRICHER
<b>SAFETY OFFICER</b>		TROY CORN; JACK CATES DON WALLER (T)		<b>AIR OPERATIONS BRANCH DIRECTOR</b>		PAUL BALFOUR
<b>5. Resources Assigned this Period</b>						
Strike Team / Task Force / Resource Designator		LWD	Leader	Number Persons	Drop Off PT./Time	Pick Up PT./Time
O-76 SOF2		08/21	RICHARD MCCONNELL	1	ICP/1800	ICP/0600
E-9 ENG6 AAA FORESTRY		08/20	CHRIS MARTIN	3	ICP/1800	ICP/0600
E-93 ENG6 ROCKY POINT WILDFIRE		08/22	KC FRYE	3	ICP/1800	ICP/0600
E-196 WTT2 SUNDANCE 204		08/12	RODNEY FAY	1	ICP/1800	ICP/0600
<b>6. Control Operations/Work Assignments:</b>						
TASK - Patrol and secure structures as needed. PURPOSE - Protect property and resources, prevent further damage and loss to structures. END STATE - Structures are protected with no additional structure loss.						
<b>7. Special Instructions:</b>						
<b>8. Division/Group Communication Summary</b>						
Function	Channel	RX Frequency N/W	RX Tone/NAC	TX Frequency N/W	TX Tone/NAC	Mode
TACTICAL	5	166.7750	146.2	166.7750	146.2	A
COMMAND	7	173.9250	146.2	169.8375	146.2	A
COMMAND	9	169.7250	88.5	164.2500	100.0	A
AIR TO GROUND	14	171.8625		171.8625		A
<b>9. Prepared By (Resource Unit Leader)</b>			<b>Approved By (Planning Section Chief)</b>		<b>Date</b>	<b>Time</b>
NATHAN JEFFRIES			HOWARD JOHNSON		08/09/2021	2000

AIR OPERATIONS SUMMARY

PREPARED BY: Paul Balfour

PREPARED DATE/TIME: August 9, 2021 1800hrs

<b>INCIDENT NAME:</b> <b>WHITMORE</b>	<b>2. OPERATIONAL PERIOD:</b> Date: 8/10/2021      Helibase Start Time: 0830 End Time: 2030      Sunrise: 0540 Sunset: 2024 (Times valid for Nespelem)
--	--

<b>3. REMARKS (Safety Notes, Hazards, Air Operations Special Equipment, etc.):</b> General Aviation, See & Avoid Bucket work, Retardant drops: ensure area is clear of ground personnel before dropping; watch for wires; be aware of potential for turbulence at ridge tops, saddles, canyons, etc *** BE AWARE OF FATIGUE, TAKE LONGER BREAKS WHEN FLYING IN SMOKEY CONDITIONS. *** Report all TFR intrusions to Air Operations, Air Support or Helibase as soon as possible.	<b>4. MEDEVAC A/C:</b> Contact Mt Tolman Fire Center 509-634-3100 N125CL PSICC 425-783-6150	<b>5. TFR #1/3986</b> Up to and including 9500msl 124.225 (A5)
---	--	--

PERSONNEL	Phone	7. FREQUENCIES	AM	FM	8. FIXED-WING	# Avail / Type/ Make-Model / FAA N# / Base(s)
AOBD: Paul Balfour O-1.40	509-993-8739	AIR/AIR Primary (A5)	124.225		Fixed Wing/Buckets	DIVS order thru ATGS if up, or Whitmore Communications
ASGS: Tim Lyda O-1.41	206-473-8560	AIR/AIR Secondary (A16)	134.050			
HEBM:		AIR/GROUND Primary (A-17)		171.8625	ATGS Aircraft	AA Mike Stout O-47 Kodiak N420Q (A20)  LATs Order through Air Attack/AOBD Mt Tolman Dispatch
HEMG: Thomas Clay(A87)	208-630-4475	AIR/GROUND Secondary		156.0225 T-103.5		
HEMG:		Air Keller Flt Flw		Rx172.775 T-156.7		
ATGS: Mike Stout O-47	208-304-4237			Tx166.325 T-123.0	Unmanned Rotor 31	Drone Group, Mgr Greg Suszck 239-877-9545
Mt Tolman:	509-634-3100	Air/Grnd 03 IA		166.6125	NOTES:	Whitmore Helibase: N48 08 75 Elevation 1769 W118 59 00
Debbie Coudell	509-570-4133	A/G DNR IA		159.270 T-103.5		DECK: 163.100
Michelle	509-675-0675					email costs to timlyda22@gmail.com

9. HELICOPTERS

FAA N#	TY	MAKE/MODEL	BASE	START	AVAIL	REMARKS	FAA N#	TY	MAKE/MODEL	BASE	START	AVAIL	REMARKS
N47CU	1	Chinook (A87)	Omak	0800	0900	Should arrive 8/9	N43HX	1	K-MAX	Helibase			Arrive 8/10 ????

# INCIDENT RADIO COMMUNICATIONS PLAN (ICS 205)

Controlled Unclassified Information//Basic

<b>1. Incident Name:</b>	<b>2. Date/Time Prepared:</b>	<b>3. Operational Period: DAY / NIGHT</b>	
WHITMORE	Date: 08/09/2021 Time: 2000	Date/Time From: 08/10/2021 0600 TUE	Date/Time To: 08/11/2021 0600 WED

**4. Basic Radio Channel Use:**

Zone Group	Ch #	Function	Channel Name/Trunked Radio System Talkgroup	Assignment	RX Freq	RX Tone/NAC	TX Freq	TX Tone/NAC	Mode (A,D, or M)	Remarks
	1	TACTICAL	TAC 1	DIV A / Z / W / P	168.0500	146.2	168.0500	146.2	A	
	2	TACTICAL	TAC 2	DIV F	168.2000	146.2	168.2000	146.2	A	
	3	TACTICAL	TAC 3	DIV L	168.6000	146.2	168.6000	146.2	A	
	4	TACTICAL	TAC 4	DIV M	166.7250	146.2	166.7250	146.2	A	
	5	TACTICAL	TAC 5	NIGHT N / S	166.7750	146.2	166.7750	146.2	A	
	6	TACTICAL	TAC 6	DIV C	168.2500	146.2	168.2500	146.2	A	
	7	COMMAND	CMD 7	EAST SIDE OF FIRE	173.9250	146.2	169.8375	146.2	A	ARMSTRONG LO
	8	COMMAND	CMD 8	RESERVED	159.4275	192.8	151.2725	192.8	A	NOT IN SERVICE
	9	COMMAND	CMD 9	ALL DIVS - BACKUP CMD	169.7250	88.5	164.2500	100.0	A	FIRE A-MOSES MTN
	10	COMMAND	MOSES	IA	169.7125	136.5	164.1625	100.0	A	FIRE B-MOSES MTN-IA ONLY
	11	TACTICAL	WA REDNET	STRUCTURE	153.8300		153.8300		A	IA ONLY
	12	TACTICAL	C TAC	IA	166.9750	151.4	166.9750	151.4	A	IA ONLY
	13	AIR TO GROUND	ATG 03	IA	166.6125		166.6125		A	IA ONLY
	14	AIR TO GROUND	A/G PRI	PRIMARY	171.8625		171.8625		A	AIR TO GROUND PRIMARY
	15	AIR TO GROUND	A/G SEC	SECONDARY	156.0225	103.5	156.0225	103.5	A	LOW POWER ONLY
	16	AIR GUARD	AIRGUARD	AIRGUARD	168.6250		168.6250	110.9	A	EMERGENCY AIR ONLY

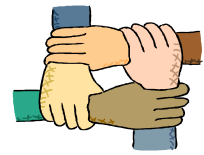
**5. Special Instructions:**

<b>6. Prepared By</b> (Communications Unit Leader)	Name: MISSY PARKER	Signature: <i>Missy Parker</i>
ICS 205	IAP Page	Date/Time: 08/09/2021 2000

Controlled Unclassified Information//Basic



# Human Resource Message



**Whitmore Fire  
August 10-11, 2021 0600-0600**

## **HARASSMENT FREE WORK ENVIRONMENT:**

The Colville Agency, the DNR, and NW Team 12, are committed to providing a harassment free work environment. Harassment is unacceptable, harmful behavior and will not be tolerated. We want to create an inclusive work culture where everyone feels safe doing their job.

We all like to have fun and joke around however, if our conduct has the purpose or effect of interfering with an individual's work performance or creating an unfriendly or offensive work environment, then we are looking at harassment and that is not fun. Therefore, our commitment supports the principle of respectful relationships, and workforce diversity efforts, and extends to all employees, volunteers, and others working on this incident. We are also required by policy and law to follow up on all complaints of harassment.

Should you encounter a harassing situation that you are uncomfortable with, talk with your supervisor, a co-worker, and or human resources to get the situation resolved. Francis Quarles' quote below encourages us to learn how to control our fears, which is something to think about.

## **Quote for the Day:**

**“Becoming fearless isn't the point.  
That's impossible.”**

**“It's learning how to control your  
fear, and how to be free from it,  
that's the point.”**

- Francis Quarles.



**Susie Manezes, NW-Team 12- (HRSP) Contact Number: 602-571-9327 (Call or Text)**

# Logistics Message

## Whitmore Fire

### Supply Hours

Cache 0530 to 2200

Ordering 0600 to 2200

### Ground Support

0600 to 2200

### Kitchen Hours

Breakfast 0500 to 0900

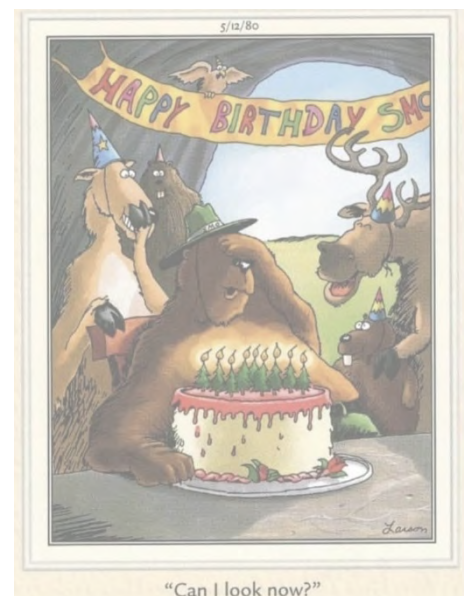
Dinner 1700 to 2200

### Shower Trailer Hours

0500-1200

1200-1400 Closed for Cleaning

1400-2200





## Whitmore Fire Finance

FSC2 – Cheri Fuller, FSC2 (T) Christina Goebel

*Personnel Time – Carol Long or Frances Tobia*

*Equipment Time & VIPR – Mark Bohnet or Todd Powell*

Email : [2021.whitmore.finance@firenet.gov](mailto:2021.whitmore.finance@firenet.gov)

Phone: 509-634-2013

Hours of operation 0530 – 2200

*There is a box located outside of the ICP where CTRs and Shift Tickets can be left. Our ICPI Rob will be over at briefing area to turn in CTR/ST. If you have questions and need to talk to anyone in finance, please call the number above. You can also email us at the email.*

### **Resources that need to contact finance**

C-14		
------	--	--

**Whitmore  
WA-COA-200106**

**Camp Map**  
Nespelem Community Center  
08/10/2021 Day Shift



Camping Note:  
Please respect  
Tribal property  
and remain 6 feet  
away from all  
structures.



S. Bushnell  
07 20 21  
Maxar, 2047 Hours



## Incident Maps

For incident maps scan the QR code on the cover of the IAP to open the 'Current Maps' folder.

### How to Download Maps in Avenza

If you're cell signal is poor you may need to connect to a wifi to download maps. However sometimes being connected to a wifi can slow map downloads. You'll just have to find out what works best.

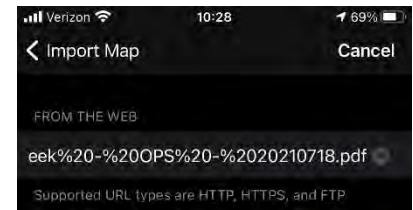
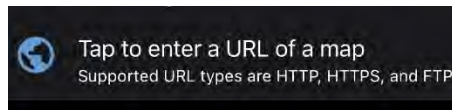
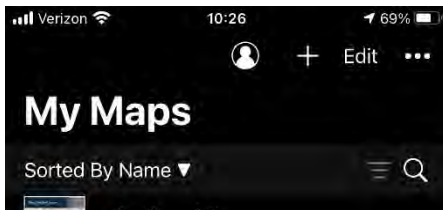
Method 1: From a browser - If you have a good cell or wifi signal

1. Tap on the desired map link and wait for the preview. *If it fails to load, use method 2 instead*
2. Tap the 'send to' icon (square with up arrow)
3. Choose the Avenza app



Method 2: From Avenza direct – if you don't have a good cell or wifi signal

1. Tap and hold on the desired map link, then choose 'copy' to copy the direct URL to the map
2. Launch the Avenza app
3. When not in any map... Tap the + (plus) icon at the top of the screen
4. Choose the load from URL option (last choice)
5. Paste the direct URL to the map
6. Tap 'Done' ; the map will begin downloading

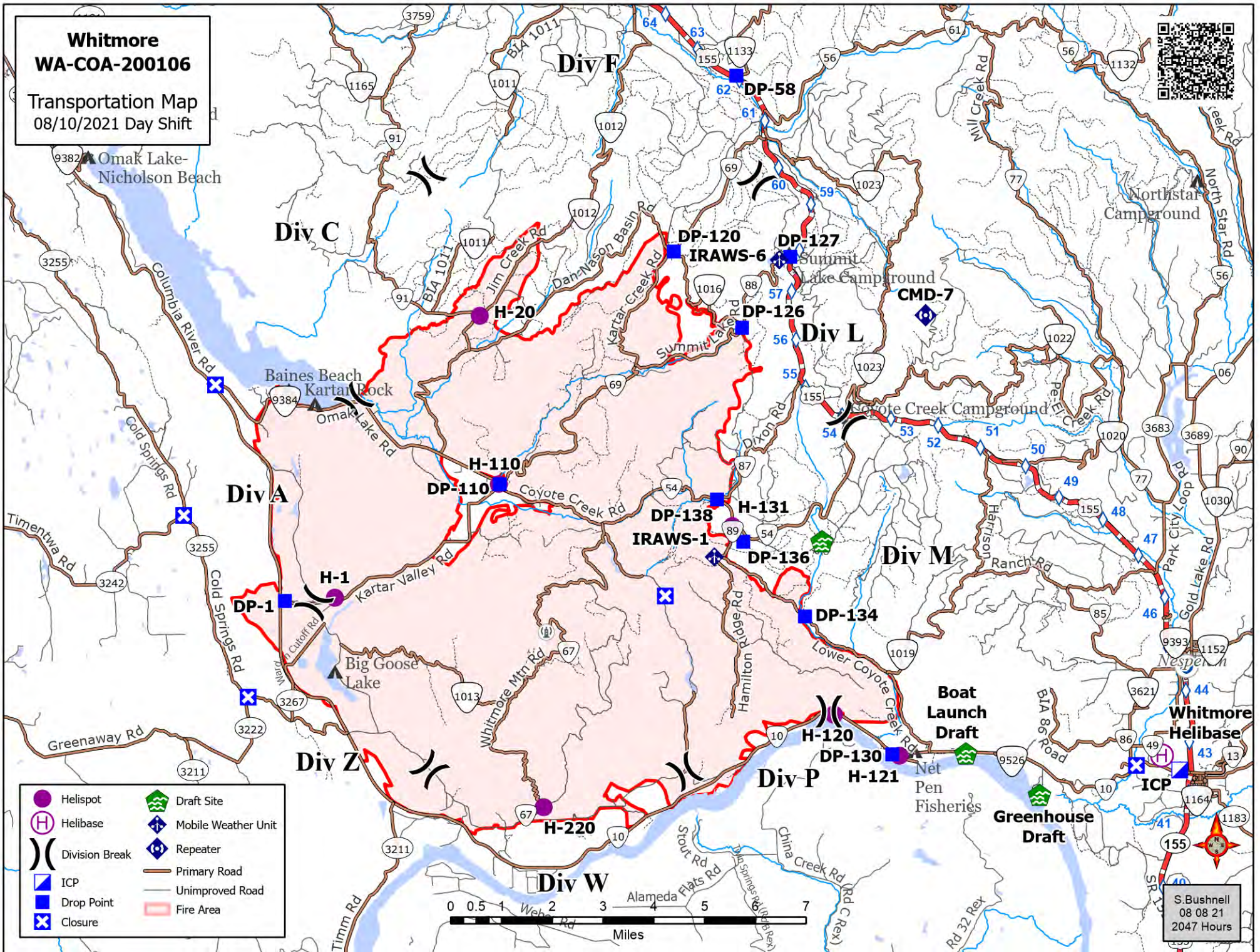


### How to Send Map Updates to the Situation Unit

1. From within the map in Avenza, click the pin with three lines near the lower-right corner.
2. *iPhone:* In the lower right, click the square with up arrow. From the pop-up menu, choose Export to Others.  
*Android:* In the lower right, click the circle with three lines. Click the pop-up circle with up arrow.
3. Set these options:
  - a. Filename – leave alone
  - b. Export Format – choose SHP, GPX or KML
  - c. Data – all features
  - d. Image size – no image
4. Click the Export button in the upper-right corner.
5. When the export is ready, choose your Mail application.
6. Email the update to [2021.whitmore.situation@firenet.gov](mailto:2021.whitmore.situation@firenet.gov).
7. If you have questions, call or text the Situation Unit at 360-584-3373.
8. Your email needs to include an explanation of the data you are sending and a contact phone number.

**Whitmore  
WA-COA-200106**

Transportation Map  
08/10/2021 Day Shift



## WHITMORE FIRE COVID-19 MITIGATIONS

**Supervisors are required to go over this list each morning with assigned resources- report any positive symptoms to medical unit.**

In the last 24 hours have you experienced:

- Cough more than expected?
- Shortness of breath or difficulty breathing?
- Fever? Chills?
- Muscle pain, outside your normal for firefighting?
- Sore throat?
- New loss of taste or smell?
- Fatigue, outside your normal for firefighting?
- Headache, outside your normal for firefighting?
- Congestion or runny nose, outside your normal for firefighting?
- Nausea or vomiting
- Diarrhea

*\* Take temperature with no-touch thermometer, if available \**



**Wear a mask in fire camp regardless of vaccination status, unless outdoors and able to maintain at least 6ft of distance at all times, alone in an enclosed space or actively engaged in firefighting on the fireline.**

**Use the Zoom link provided to join briefings remotely.**

**Observe 6ft Distancing whenever possible.**

**Observe “Module as One” practices – only close contact with crew (engine, handcrew, etc.) that you live and work with all summer. Observe distancing and masking around everyone else. Do not co-mingle with other crews or “modules” in camp or on the line.**

**Send crew representatives to pick up meals - masks must be worn in food lines.**

**No entry to ICP building except Incident Management Team members**

**Wash hands frequently and disinfect high-traffic areas on a regular basis.**

**Limit close contact between firefighters and the public to prevent exposure and spread.**

<b>UNIT LOG</b>		1. Incident Name	2. Date Prepared	3. Time Prepared
4. Unit Name/Designators		5. Unit Leader (Name and Position)		6. Operational Period
7. Personnel Roster Assigned				
Name		ICS Position		Home Base
8. Activity Log				
Time		Major Events		
9. Prepared by (Name and Position)				

## EMERGENCY PLAN

### INCIDENT WITHIN AN INCIDENT

#### ON SCENE SUPERVISOR

**In the event of an accident or medical incident of any size, your primary responsibility is to ENSURE that the victim(s) receive prompt and effective Triage, Treatment and Transportation.**

- Conduct size-up of the incident (nature of accident, number type of resources involved, latitude and longitude location): notify incident communications center and supervisor, request assistance as needed.
- Order and coordinate medical and support response to the accident.
- Evaluate special needs (law enforcement, haz mat, etc.).
- Clear the command frequency if medical emergency; coordinate with incident communications and air attack for air medical transportation needs
- Preserve and photograph the scene for accident investigation.
- Remain aware of surroundings and the status of the main incident (delegate personnel to monitor the main fire) to ensure safety of medical treatment personnel.
- Until relieved, supervise and manage all personnel involved at the incident scene.
- **ENSURE THE MEDICAL INCIDENT REPORT IN THE INCIDENT ACTION PLAN IS BEING USED AND FOLLOWED.**

# MEDICAL PLAN (ICS 206 WF)

20 Incident/Project Name		1. Operational Period						
Whitmore Fire		Date/Time 8/10/2021 0600-1900						
2. Ambulance Services								
Name	Complete Address	Phone	Advanced Life Support (ALS)					
			Yes	No				
Colville Tribal EMS Nespelem, WA	410 10 <sup>th</sup> St. Nespelem, WA 99155	911 - Dispatch 509-634-2472 509-978-9323		x				
Lifeline Ambulance	912 Koala Ave Omak, WA 98841	911 - Dispatch 509-663-8091	x					
3. Air Ambulance Services								
Name	Phone	Type of Aircraft & Capability						
Airlift Northwest	800-426-2430 or 911	Rotor in Wenatchee						
Life Flight Network	800-232-0911	2 Rotors, 1 Fixed Wing, Spokane						
4. Hospitals								
Name Complete Address	GPS Datum – WGS 84 Coordinate Standard Degrees Decimal Minutes DD° MM.MMM' N - Lat DD° MM.MMM' W - Long		Travel Time From ICP		Phone	Helipad		Level of Care Facility
	Lat:	Long:	Air	Gnd		Yes	No	
Coulee Medical Center 411 Fortuyn Rd Grand Coulee, WA 99133	44°56.5186' N	119°0.4333' W	20 Min	40 Min	509-633-1753	x		Level 4 Trauma
	48°23.8336' N	119°32.8758' W	40 Min	1Hr 14 min	509-826-1760	x		Level 4 Trauma
	VHF:							
Mid-Valley Hospital 912 Koala Ave Omak, WA 98841	47°24.4340' N	120°19.3664' W	1Hr 10 Min	2 Hr 30 Min	509-662-1511	x		Level 2 Trauma
	47°36.1897' N	122°19.4759' W	2 Hr	4 Hr	541-222-6929	x		Level 1 Trauma Burn Center
	VHF:		15 Min	30 Min				
Confluence Health Hospital (Central Washington Hospital) 1201 S Miller St. Wenatchee, WA 98801	47°36.1897' N	122°19.4759' W	2 Hr	4 Hr	541-222-6929	x		Level 1 Trauma Burn Center
	120°19.3664' W		10 Min	30 Min	509-662-1511	x		Level 2 Trauma
	VHF:							
Harborview Medical 325 9 <sup>th</sup> Ave Seattle, WA 98104	47°36.1897' N	122°19.4759' W	2 Hr	4 Hr	541-222-6929	x		Level 1 Trauma Burn Center
	122°19.4759' W		15 Min	30 Min	541-222-6929	x		Level 1 Trauma Burn Center
	VHF:							
5. Division   Branch   Group	Capability	Personnel						
Div A/W/Z/P		Unstaffed						
Div M	Medic 1 Lipsker O-62	Medic 3 Justin Smith O-36						
Div L		Ambo 2 (BLS) E-67						
Div C	Medic 2 Jennel Smith O-37	EMT 2 Lukowicz O-175		Ambo 1 (ALS) E-5				
Div F		REMS 9 O-43						
Night Shift North/South		EMT 1 Wellman O-176						
Structure Protection		Unstaffed						
6. Prepared By (Medical Unit Leader)		7. Date/Time	8. Reviewed By (Safety Officer)		9. Date/Time			
Eamonn Ryan, Diana Braun, Lee Venning (T) <i>Lee Venning</i>		08/09/2021 1800	<i>Don Waller</i>		08/09/2021 1800			

# MEDICAL PLAN (ICS 206 WF)

Controlled Unclassified Information//Basic

## Medical Incident Report

**FOR A NON-EMERGENCY INCIDENT, WORK THROUGH CHAIN OF COMMAND TO REPORT AND TRANSPORT INJURED PERSONNEL AS NECESSARY.**

**FOR A MEDICAL EMERGENCY: IDENTIFY ON SCENE INCIDENT COMMANDER BY NAME AND POSITION AND ANNOUNCE "MEDICAL EMERGENCY" TO INITIATE RESPONSE FROM IMT COMMUNICATIONS/DISPATCH.**

Use the following items to communicate situation to communications/dispatch.

**1. CONTACT COMMUNICATIONS / DISPATCH (Verify correct frequency prior to starting report)**

*Ex: "Communications, Div. Alpha. Stand-by for Emergency Traffic."*

**2. INCIDENT STATUS: Provide incident summary (including number of patients) and command structure.**

*Ex: "Communications, I have a Red priority patient, unconscious, struck by a falling tree. Requesting air ambulance to Forest Road 1 at (Lat./Long.) This will be the Trout Meadow Medical, IC is TFLD Jones. EMT Smith is providing medical care."*

Severity of Emergency / Transport Priority	<input type="checkbox"/> RED / PRIORITY 1 Life or limb threatening injury or illness. Evacuation need is IMMEDIATE <i>Ex: Unconscious, difficulty breathing, bleeding severely, 2° – 3° burns more than 4 palm sizes, heat stroke, disoriented.</i> <input type="checkbox"/> YELLOW / PRIORITY 2 Serious Injury or illness. Evacuation may be DELAYED if necessary. <i>Ex: Significant trauma, unable to walk, 2° – 3° burns not more than 1-3 palm sizes.</i> <input type="checkbox"/> GREEN / PRIORITY 3 Minor Injury or illness. Non-Emergency transport <i>Ex: Sprains, strains, minor heat-related illness.</i>	
Nature of Injury or Illness & Mechanism of Injury		<i>Brief Summary of Injury or Illness (Ex: Unconscious, Struck by Falling Tree)</i>
Transport Request		<i>Air Ambulance / Short Haul/Hoist Ground Ambulance / Other</i>
Patient Location		<i>Descriptive Location &amp; Lat. / Long. (WGS84)</i>
Incident Name		<i>Geographic Name + "Medical" (Ex: Trout Meadow Medical)</i>
On-Scene Incident Commander		<i>Name of on-scene IC of Incident within an Incident (Ex: TFLD Jones)</i>
Patient Care		<i>Name of Care Provider (Ex: EMT Smith)</i>

**3. INITIAL PATIENT ASSESSMENT: Complete this section for each patient as applicable (start with the most severe patient)**

Patient Assessment: See IRPG page 106

Treatment:

**4. TRANSPORT PLAN:**

Evacuation Location (if different): (Descriptive Location (drop point, intersection, etc.) or Lat. / Long.) Patient's ETA to Evacuation Location:

Helispot / Extraction Site Size and Hazards:

**5. ADDITIONAL RESOURCES / EQUIPMENT NEEDS:**

*Example: Paramedic/EMT, Crews, Immobilization Devices, AED, Oxygen, Trauma Bag, IV/Fluid(s), Splints, Rope rescue, Wheeled litter, HAZMAT, Extrication*

**6. COMMUNICATIONS: Identify State Air/Ground EMS Frequencies and Hospital Contacts as applicable**

Function	Channel Name/Number	Receive (RX)	Tone/NAC *	Transmit (TX)	Tone/NAC *
COMMAND					
AIR-TO-GRND					
TACTICAL					

**7. CONTINGENCY: Considerations: If primary options fail, what actions can be implemented in conjunction with primary evacuation method? Be thinking ahead.**

**8. ADDITIONAL INFORMATION: Updates/Changes, etc.**

**REMEMBER:** Confirm ETA's of resources ordered. Act according to your level of training. Be Alert. Keep Calm. Think Clearly. Act Decisively.

Controlled Unclassified Information//Basic