

Incident Action Plan WHITMORE FIRE



August 11/12, 2021

**0600-1800 Day Operational Period
1800-0600 Night Operational Period**



MORNING BRIEFING @ 0600

Morning briefing will be a ZOOM call, use the information below to connect:

Phone: 1-669-254-5252

Meeting ID: 160 329 1397

Passcode: 252064



SCAN QR code to JOIN VIA ZOOM

Photo Credit – Jeff Pricher (Night South DIVS)

**WA-COA-200106
N7SC [P] (1522)
221 KTO**



DOWNLOAD
IAP



SCAN TO
CHECK IN



DOWNLOAD
MAPS

<https://forms.office.com/g/agvAKcC86U>


This page intentionally left blank.



INCIDENT OBJECTIVES (ICS 202)

1. Incident Name:	2. Operational Period: DAY / NIGHT	
WHITMORE	Date/Time From: 08/11/2021 0600 WED	Date/Time To: 08/12/2021 0600 THU
3. Objective(s):		
<p>Implement risk management practices for the safety of firefighters, other responders and the public as the first priority.</p> <p>Minimize impacts to private property, critical infrastructure, timber, cultural and natural resources including water, fish, wildlife, and range land.</p> <p>Maintain and strengthen community relationships and provide timely fire information to the public and cooperators.</p> <p>Establish and maintain all current COVID-19 mitigation protocols according to CDC and agency guidelines.</p>		
4. Operational Period Command Emphasis:		
Implement direct suppression tactics where safe to do so to minimize fire size, protect timber values and private property.		
General Situational Awareness:		
Monitor the weather conditions and base all actions on current and expected fire behavior.		
5. Site Safety Plan Required? Yes <input type="checkbox"/> No <input checked="" type="checkbox"/>		
Approved Site Safety Plan(s) Located		
6. Incident Action Plan (the items checked below are included in this Incident Action Plan):		
<input checked="" type="checkbox"/> ICS 202 <input checked="" type="checkbox"/> ICS 203 <input checked="" type="checkbox"/> ICS 204 <input checked="" type="checkbox"/> ICS 205 <input type="checkbox"/> ICS 205A <input checked="" type="checkbox"/> ICS 206	<input type="checkbox"/> ICS 207 <input type="checkbox"/> ICS 208 <input checked="" type="checkbox"/> ICS 220 <input checked="" type="checkbox"/> Map/Chart <input checked="" type="checkbox"/> Weather Forecast/Tides/Currents	Other Attachments: <input type="checkbox"/> _____ <input type="checkbox"/> _____ <input type="checkbox"/> _____ <input type="checkbox"/> _____
7. Prepared by: HOWARD JOHNSON Position/Title: PSC2	Signature: <i>Howard Johnson</i>	
8. Approved by Incident Commander:	Name: BOBBY SHINDELAR	Signature: <i>Bobby Shindelar</i>
ICS 202	IAP Page	Date/Time: 08/10/2021 2000

ORGANIZATION ASSIGNMENT LIST (ICS 203)

1. Incident Name:		2. Operational Period: DAY / NIGHT	
WHITMORE		Date/Time From: 08/11/2021 0600	WED Date/Time To: 08/12/2021 0600 THU
3. Incident Commander(s) and Command Staff:		COMMUNICATIONS UNIT	MISSY PARKER
IC/UC	BOBBY SHINDELAR	MEDICAL UNIT	EAMONN RYAN; DIANA BRAUN LEE VENNING (T)
DEPUTY		FOOD UNIT	ALEXANDER LILLA
SAFETY OFFICER	TROY CORN JACK CATES; DON WALLER (T)		
INFORMATION OFFICER	MARY BEAN ROLAND EMETAZ		
LIAISON OFFICER	SCOTT CRAWFORD		
HUMAN RESOURCE SPECIALIST	SUSIE MANEZES		
HEALTH LIAISON	LIV STECKER		
		7. Operations Section:	
		OPS SECTION CHIEF	MATT CASTLE KURT RANTA (T)
		PLANNING OPS	TONY ENGEL JEFF BOUSCHOR
4. Agency/Organization Representative(s):			
Agency/Organization	Name		
COLVILLE AGENCY	PHIL WAPATO		
DNR	PAT RYAN		
		DIVISION/GROUP	A/Z/W/P NIKIA HERNANDEZ
		DIVISION/GROUP	C DAN OBERG
		DIVISION/GROUP	F LARRYLEACH JAMES DICKINSON (T)
		DIVISION/GROUP	L BOB HINDS
		DIVISION/GROUP	M MIKE JACKSON SAM STEINSHOUER (T)
		DIVISION/GROUP	STRUCTURE/CONTINGENCY BRANDYN HARVEY
		DIVISION/GROUP	NIGHT NORTH NICK SCHREINER
		DIVISION/GROUP	NIGHT SOUTH JEFF PRICHER
5. Planning Section:		7b. Air Operations Branch:	
CHIEF	HOWARD JOHNSON JILL JOHNSON (T)	AIR OPS BRANCH DIRECTOR	PAUL BALFOUR
RESOURCES UNIT	NATHAN JEFFRIES (VIRTUAL)	AIR ATTACK SUPERVISOR	
SITUATION UNIT	DAVE WISCHER	AIR SUPPORT SUPERVISOR	TIM LYDA
DOCUMENTATION UNIT		AIR TANKER COORDINATOR	
DEMOBILIZATION UNIT	MIKE HESTON (VIRTUAL)		
FIRE BEHAVIOR ANALYST	DON STRAND	8. Finance/Administration Section:	
GIS SPECIALIST	SHAWN BUSHNELL MIKE TONKEL (T)	CHIEF	CHERI FULLER CHRISTINA GOEBEL (T)
TECHNOLOGY SUPPORT SPECIALIST	GEORGE JENKINS	TIME UNIT	CAROL LONG
INCIDENT METEOROLOGIST	BOB TOBIN	COMPENSATION UNIT	CHERI FULLER
		PROCUREMENT UNIT	MARK BOHNET
		COST UNIT	KATHLEEN HIGH (VIRTUAL)
6. Logistics Section:			
CHIEF	DAN SOPTICH		
DEPUTY	KEVIN HAUGHTON		
SUPPLY UNIT	JOHN KAUPA		
FACILITIES UNIT	KAREN ZIRKLE		
GROUND SUPPORT UNIT	MARKANDERSON		
9. Prepared By:	Name: JILL JOHNSON	Position/Title: PSC2 (T)	Signature: 
ICS 203	IAP Page	Date/Time: 08/10/2021 2000	

Fire Weather Forecast

FORECAST NO: 7
PREDICTION FOR: Wednesday-Wednesday night
Shift Date: August 11-12, 2021 0600-0600
TIME AND DATE
FORECAST ISSUED: 8/10/2021 at 2000

INCIDENT: Whitmore Fire
UNIT: Colville Reservation
SIGNED: Bob Tobin
Incident Meteorologist (IMET)

...Fire Weather Watch in effect Wednesday night through Thursday night for Gusty Winds and Low Relative Humidity...

Weather Discussion: High pressure will be over the region through Friday. This will be followed by another storm system Saturday night and Sunday. Warm temperatures can be expected as well as very dry relative humidity with poor to moderate night time recoveries. A weak disturbance Wednesday night will increase northerly winds across Omak Lake Wednesday night and Thursday. A cold front moves through Saturday night or Sunday for another chance for thunderstorms.

WEATHER FORECAST:

Today:

SKY/WEATHER: Partly cloudy and warmer.

High Temperature...90-96 above 3000 feet and 95-103 below 3000 feet.

24hr Change...Up 7-8.

Min RH.....15-25 % above 3000 feet and 15-20% below 3000 feet.

24hr Change...Down 3-6%

20-FOOT WINDS: North 8-10 mph with gusts to 15.

CWR (>=0.10")....0% **LAL....**1 **Haines Index...**2 (Very Low) **Mixing Height...**9300 ft AGL

Tonight:

Weather: Partly cloudy.

Low Temperature...64-69.

Max RH.....35-45%

20-FOOT WINDS: North 10-12 with gusts to 15 mph in the evening ...increasing to north-northeast 15-20 mph with gusts 25 possibly higher after midnight.

CWR (>=0.10")....0% **LAL....**1.

Thursday:

SKY/WEATHER: Mostly sunny.

High Temperature...88-92 above 3000 feet and 93-100 below 3000 feet.

Min RH.....15-20% above 3000 feet...10-20% below 3000 feet

20-FOOT WINDS: Northeast 12-15 mph with gusts 25-30 mph through 1000. Then decreasing to 10-12 mph through the afternoon.

CWR (>=0.10").... 0% **LAL....**1 **Haines Index...**4 (Low) **Mixing Height...**10000 ft AGL

Extended Outlook

Friday...Partly cloudy. Low: 68-72...High: 94-103. Min RH: 10-20% Winds: South-southwest 8-12 mph with gusts to 15 mph.

Saturday...Increasing clouds. A slight chance of thunderstorms Saturday night. Low 70-74...High 90-100. Min RH: 10-20% Southwest 8-10 mph in the morning...becoming North-northeast 10-12 mph through the afternoon..

FIRE BEHAVIOR FORECAST

FORECAST NUMBER: 7	TYPE OF FIRE: Wildland
FIRE NAME: Whitmore	OPERATIONAL PERIOD: Aug 11-12, 2021 Day-Night-Shift
DATE ISSUED: Aug 10, 2021	TIME ISSUED: 2000
UNIT: WA-COA	Don Strand FBAN

INPUTS

WEATHER SUMMARY:

Fire Weather Watch in effect Wednesday night through Thursday night for Gusty Winds and Low Relative Humidity
Partly cloudy and warmer. Max temp near 100, Min RH 15%. Winds- North 8-12 mph with gusts to 15 mph.

OUTPUTS

FIRE BEHAVIOR

GENERAL:

- Fire behavior potential is trending up the next few days with the weather continuing to warm and dry. Fire will remain very active in areas with available fuels. With poor nighttime RH recovery, active burning periods are increasing. In areas with available fuels, expect backing, flanking with occasional torching. There are plenty of ladder fuels and receptive surface fuels.
- Fuels consist mixed conifer and pine with grass and brush. Logging slash is in scattered locations. There are some areas of regeneration from past timber harvest and 5 to 10-year-old fire scar regen with grass and brush understory. In some areas, grass is heavily grazed. Much of the lower elevations are covered with grass and sagebrush with timbered stringers in the deep draws.
- Most spotting will be short range and also from roll outs on steeper ground. Spotting distance will approach about 1000 ft although with periodic wind gusts to 15 mph.
- **Probability of Ignition will be near 90% unshaded and 60% shaded during the warmest part of the day.**

SPECIFIC:

DIV A/Z/W/P: This portion of the fire will be the warmest and driest portion of the fire.

DIV C: Light grass and brush fuels will readily available for fire spread. Areas of dirty burns near fire lines have potential to flare up spot across fire lines. Potential for roll outs on steeper slopes. Winds may be squirrely due to mix of north winds and local upslope winds. Any spot fires in the adjacent fuels will rapidly spread.

DIV F: As the fire edge approaches Road 103 in the drainage, smoke drift may cross road dropping embers into the green initiating spot fires. Watch for hold over spots adjacent to last night's burning operation.

DIV L: Pay attention to local winds with any burnout. Watch for flare ups and spotting in areas of dirty burns adjacent to fire lines. In areas of wind/slope alignment, expect more active fire behavior.

DIV M: Any flare ups in areas of dirty burns may spot into lighter fuels and may be influenced by north winds.

Initial Attack: In the event we respond to a new start, keep in mind the all fuels in the area are very receptive to fire spread. Hot and dry weather with high Probability of Ignition, any start will likely spot. Poor nighttime RH recovery will allow for 24-hour drying of fuels and increase the burning period.

NIGHT: Fire activity remaining from day shift will continue to be active well after dark due to forecasted poor to moderate RH recovery overnight. Continue to monitor for spots.

AIR OPERATIONS: Watch for turbulence in the complex terrain.

SAFETY

- **Take weather obs periodically to determine fine dead fuel moistures to help maintain SA.**
- **Upslope up-valley winds with north winds over ridges – expect squirrely winds. Pay attention to smoke drift and potential for spotting along flanks.**
- **Wind/slope alignment – will increase fire activity and also contribute torching and spotting.**
- **Burnout – watch for wind directions and speed. Pay attention to smoke drift across fire lines, potentially causing spots.**

Safety Message

11-12 August 2021

INCIDENT: Whitmore Fire

OPERATIONAL PERIOD: 0600-0600

TOPICS: FOCUS AND DRIVING

HOW TO MAINTAIN FOCUS

What is Focus?

Focus is the thinking skill that allows people to begin a task without procrastination and then maintain their attention and effort until the task is complete. Focus helps people pay attention in the midst of distractions and setbacks and to sustain the effort and energy needed to reach a goal. We all know focus can be hard to maintain when the task doesn't meet our motivation threshold. Remember, even an incident of over 340 personnel, the successful completion of the mission depends on every single person to maintain and perform. Lost focus equals lost productivity and a rise in risk!

DRIVING



Driving may be one of most taken for granted activities we engage in. Traffic accidents are rapidly becoming one of top causes for firefighter injuries and fatalities. Use ALL safety equipment; seat belts, frequently check your mirrors, keep lights on and always use a spotter in all circumstances with blind spots. Practice good road SA. Anticipate vehicles on blind curves, maintain proper speed for conditions, look where you want to go, not where you are. Mark known driving hazards, communicate turn-around sites and manage flow of traffic. If in doubt, SLOW DOWN. Leave the cell phone in your pocket and avoid other items/activities that compete for your attention.

SAFETY OFFICER: Troy Corn, Jack Cates, Don Waller (T)

Deliberate Risk Assessment-Hazard Summary

11-12 August 2021

Hazard	Mitigation	Post Risk
Unburned Fuels/Firing Ops	Ensure management action points are implemented and followed. Weather updates as needed during burning operations. Locate indirect firelines to minimize the amount of unburned fuels. Ensure communications between all firing operations. Establish road security at all firing sites. Follow approved firing plan for unburned fuels.	Moderate
Hazard Trees	Use avoidance to limit exposure time. Snag ahead to avoid exposure. Use qualified fallers, blasting, or alternate methods if needed. Conduct on- going risk analysis of all work areas. Follow Hazard Tree Safety Guidelines (IRPG page 22).	High
Aircraft	Utilize Air Attack. Ensure all resources are a safe distance from all bucket and retardant drops. Utilize air to ground primary radio channel.	High
Steep Terrain/Gravity	Do not work crews above or below each other. Post lookouts for rolling material. Watch footing in loose soil, rock and around vegetation. Do not work below heavy equipment. Scout and identify travel routes.	Moderate
Physical Factors	Maintain hydration schedule. Closely monitor work rate and implement rest periods. Maintain nutrition. Ensure adequate work/rest.	Moderate
Extraction Time	Identify medivac sites and helispots. Initiate ground transport to accident site. Review IWI protocol to ensure familiarity.	High
Transportation	Signing of all incident roads that provide access to divisions. Practice defensive driving. In local communities obey the posted speed limits. Use reader boards to control entry as needed. Identify and evaluate contingency and alternate escape and travel routes.	High
Heavy Equipment	Post lookouts around equipment work areas. Establish communications with equipment boss and operator. Do not work down slope from equipment.	High
Transmission/Power Lines	Maintain one span radius from any downed line or compromised pole, be aware of smoke conductivity, report any downed lines or burning poles.	High
Initial Attack	Ensure identified IA resources are briefed of expectations and ensure communication plan is provided. Ensure resources are briefed on IA command structure. Provide identified crews with area maps.	Moderate
Environmental Factors	Assess for known allergies and report to medical personnel. Obtain Bee/wasp spray and yellow jacket traps. Maintain an awareness of livestock and rattlesnakes.	Moderate
Fire Behavior	Be aware of burn windows and weather impacts and min/max RH for flashy fuels/local conditions. Report changes to FBAN and IMET.	Moderate
Communication	Evaluate for dead zones prior to engagement. Utilize human repeaters as needed. Ensure accountability of resources in problem areas. Be prepared if local traffic maximizes air time.	Moderate
Viral Transmission Mitigations, Communicable Disease	Maintain isolated ICP (remote briefings, etc), maintain social distancing, and wear face coverings in accordance with CDC recommendations. Report and isolate if not feeling well.	Low
Public Interaction	Place new road closures as necessary and maintain current closures. Provide signage on all perimeter roads warning of closures and fire activity. Request tribal police presence on SR155 access roads, Omak Lake and Columbia River Road. Maintain awareness of evacuation areas and provide accurate information dissemination.	Low

Division/Group Assignment List (ICS 204 WF)
Controlled Unclassified Information//Basic

1. Incident Name:			3.			
WHITMORE			Branch:		Division/Group	
2. Operational Period: DAY / NIGHT					A/Z/W/P	
Date/Time From: 08/11/2021 0600 WED		Date/Time To: 08/12/2021 0600 THU				
4. Operations Personnel						
OPERATIONS CHIEF		MATT CASTLE; KURT RANTA (T) TONY ENGEL; JEFF BOUSCHOR		DIVISION/GROUP SUPERVISOR		NIKIA HERNANDEZ
SAFETY OFFICER		TROY CORN; JACK CATES DON WALLER (T)		AIR OPERATIONS BRANCH DIRECTOR		PAUL BALFOUR
5. Resources Assigned this Period						
Strike Team / Task Force / Resource Designator		LWD	Leader	Number Persons	Drop Off PT./Time	Pick Up PT./Time
E-193 ENG6 THUNDERBOLT		08/18	TOBY YAZIE	2	ICP/0600	ICP/1800
6. Control Operations/Work Assignments:						
<p>TASK: Secure fire North and East of Columbia River Road, South of Omak Lake to Division break. Provide for Structure Protection on Columbia River Road, Kartar Valley and Omak Lake road.</p> <p>PURPOSE: Protect property and resources; limit further fire spread to the West.</p> <p>END STATE: Fire is contained south of Omak Lake and East of Columbia River road and structures are not threatened.</p>						
7. Special Instructions:						
<ul style="list-style-type: none"> Return all empty gas cans to supply! GPS all pump locations 						
8. Division/Group Communication Summary						
Function	Channel	RX Frequency N/W	RX Tone/NAC	TX Frequency N/W	TX Tone/NAC	Mode
TACTICAL	1	168.0500	146.2	168.0500	146.2	A
COMMAND	7	173.9250	146.2	169.8375	146.2	A
COMMAND	8	159.4275	192.8	151.2725	192.8	A
COMMAND	9	169.7250	88.5	164.2500	100.0	A
AIR TO GROUND	14	171.8625		171.8625		A
9. Prepared By (Resource Unit Leader)			Approved By (Planning Section Chief)		Date	Time
NATHAN JEFFRIES			HOWARD JOHNSON		08/10/2021	2000

Division/Group Assignment List (ICS 204 WF)
Controlled Unclassified Information//Basic

1. Incident Name:			3.			
WHITMORE			Branch:		Division/Group	
2. Operational Period: DAY / NIGHT					C	
Date/Time From: 08/11/2021 0600 WED		Date/Time To: 08/12/2021 0600 THU				
4. Operations Personnel						
OPERATIONS CHIEF		MATT CASTLE; KURT RANTA (T) TONY ENGEL; JEFF BOUSCHOR		DIVISION/GROUP SUPERVISOR		DANIEL OBERG
SAFETY OFFICER		TROY CORN; JACK CATES DON WALLER (T)		AIR ATTACK SUPERVISOR		PAUL BALFOUR
5. Resources Assigned this Period						
Strike Team / Task Force / Resource Designator		LWD	Leader	Number Persons	Drop Off PT./Time	Pick Up PT./Time
O-174 SOF2		08/24	PAUL BRNA	1	ICP/0600	ICP/1800
E-8.1 TFLD		08/22	LAFE SACKETT	1	ICP/0600	ICP/1800
C-3 HC2I MOCC INTERAGENCY CREW #4		08/21	TIMOTHY PERREN	20	ICP/0600	ICP/1800
E-7 ENG6 OREGON WOODS, INC.		08/19	BEN COOK	3	ICP/0600	ICP/1800
E-179 ENG3 WILDFIRE SUPPORT TEAM (R&R, RETURN 8/12)		08/25	JOEY DEMARTINO	3	ICP/0600	ICP/1800
E-18 WTS2 PORTABLE ROCK PRODUCTION		08/19	JIMMY POWELL	1	ICP/0600	ICP/1800
E-5000 DOZ2 SCFD9		08/20	MICHAEL WOLF	1	ICP/0600	ICP/1800
E-110 UTV TOP GUN RESOURCES			-- UNSTAFFED --			
E-5 AMBU1 MED TRANSPORT (ALS)		08/21	JENNIFER BOSTWICK	2	ICP/0600	ICP/1800
O-37 EMPF MEDIC 2		08/21	JENNEL SMITH	1	ICP/0600	ICP/1800
O-175 EMT 2		08/18	KADY LUKOWICZ	1	ICP/0600	ICP/1800
8. Division/Group Communication Summary						
Function	Channel	RX Frequency N/W	RX Tone/NAC	TX Frequency N/W	TX Tone/NAC	Mode
TACTICAL	6	168.2500	146.2	168.2500	146.2	A
COMMAND	7	173.9250	146.2	169.8375	146.2	A
COMMAND	8	159.4275	192.8	151.2725	192.8	A
COMMAND	9	169.7250	88.5	164.2500	100.0	A
AIR TO GROUND	14	171.8625		171.8625		A
9. Prepared By (Resource Unit Leader)			Approved By (Planning Section Chief)		Date	Time
NATHAN JEFFRIES			HOWARD JOHNSON		08/10/2021	2000

Division/Group Assignment List (ICS 204 WF)

Controlled Unclassified Information//Basic

1. Incident Name:			3.			
WHITMORE			Branch:		Division/Group C	
2. Operational Period: DAY / NIGHT						
Date/Time From: 08/11/2021 0600 WED		Date/Time To: 08/12/2021 0600 THU				
4. Operations Personnel						
OPERATIONS CHIEF		MATT CASTLE; KURT RANTA (T) TONY ENGEL; JEFF BOUSCHOR		DIVISION/GROUP SUPERVISOR		DANIEL OBERG
SAFETY OFFICER		TROY CORN; JACK CATES DON WALLER (T)		AIR ATTACK SUPERVISOR		PAUL BALFOUR
5. Resources Assigned this Period						
Strike Team / Task Force / Resource Designator		LWD	Leader	Number Persons	Drop Off PT./Time	Pick Up PT./Time
6. Control Operations/Work Assignments:						
<p>TASK - Mop up and secure completed fireline, scout and establish new firelines as necessary to keep fire East of Rattlesnake Creek and Peter Flat.</p> <p>PURPOSE - Protect property and resources; limit further fire spread to the West.</p> <p>END STATE - Fireline is established and secured and fire is contained East of Rattlesnake creek and Peter Flat.</p>						
7. Special Instructions:						
<ul style="list-style-type: none"> Return all empty gas cans to supply! GPS all pump locations 						
8. Division/Group Communication Summary						
Function	Channel	RX Frequency N/W	RX Tone/NAC	TX Frequency N/W	TX Tone/NAC	Mode
TACTICAL	6	168.2500	146.2	168.2500	146.2	A
COMMAND	7	173.9250	146.2	169.8375	146.2	A
COMMAND	8	159.4275	192.8	151.2725	192.8	A
COMMAND	9	169.7250	88.5	164.2500	100.0	A
AIR TO GROUND	14	171.8625		171.8625		A
9. Prepared By (Resource Unit Leader)			Approved By (Planning Section Chief)		Date	Time
NATHAN JEFFRIES			HOWARD JOHNSON		08/10/2021	2000

Division/Group Assignment List (ICS 204 WF)
Controlled Unclassified Information//Basic

1. Incident Name:			3.			
WHITMORE			Branch:		Division/Group	
2. Operational Period: DAY / NIGHT					F	
Date/Time From: 08/11/2021 0600 WED		Date/Time To: 08/12/2021 0600 THU				
4. Operations Personnel						
OPERATIONS CHIEF		MATT CASTLE; KURT RANTA (T) TONY ENGEL; JEFF BOUSCHOR		DIVISION/GROUP SUPERVISOR		LARRY LEACH JAMES DICKINSON (T)
SAFETY OFFICER		TROY CORN; JACK CATES DON WALLER (T)		AIR ATTACK SUPERVISOR		PAUL BALFOUR
5. Resources Assigned this Period						
Strike Team / Task Force / Resource Designator		LWD	Leader	Number Persons	Drop Off PT./Time	Pick Up PT./Time
O-1.61 SOF2		08/20	JOSHUA NORTHRUP	1	ICP/0600	ICP/1800
O-118 TFLD		08/22	TROY MAGUIRE	1	ICP/0600	ICP/1800
O-12 HEQB		08/21	TRAVIS BRUCH	1	ICP/0600	ICP/1800
O-186 FMOD TOP NOTCH		08/24	KYLE ARMIJO	2	ICP/0600	ICP/1800
C-7 HC1 LA GRANDE IHC		08/19	JOSH DIACETIS	20	ICP/0600	ICP/1800
C-1 HC2 GRIZZLY FIREFIGHTERS INC		08/21	KARLA BEJAR	20	ICP/0600	ICP/1800
E-8 ENG6 NM-EMP NPS		08/22	LAFE SACKETT	6	ICP/0600	ICP/1800
E-191 ENG4 WOODPECKER 5		08/12	JOSEPH BOIANOFF	3	ICP/0600	ICP/1800
E-17 WTS2 FYR FLY LTD #68		08/19	LINN LAMB	1	ICP/0600	ICP/1800
E-19 WTS2 BOMBEROS WATER LLC		08/19	KURT FIGG-HOBLYN	1	ICP/0600	ICP/1800
E-187 WTS2 OWENS		08/19	FRANKLIN OWENS	1	ICP/0600	ICP/1800
E-2 DOZ2 SILVER-NICKEL LOGGING LLC		08/19	TOBY EPPERSON	2	ICP/0600	ICP/1800
E-20 DOZ2 BLM		08/22	BLAINE JEWETT	1	ICP/0600	ICP/1800
E-112 UTV TOP GUN RESOURCES			-- UNSTAFFED --			
8. Division/Group Communication Summary						
Function	Channel	RX Frequency N/W	RX Tone/NAC	TX Frequency N/W	TX Tone/NAC	Mode
TACTICAL	2	168.2000	146.2	168.2000	146.2	A
COMMAND	7	173.9250	146.2	169.8375	146.2	A
COMMAND	8	159.4275	192.8	151.2725	192.8	A
COMMAND	9	169.7250	88.5	164.2500	100.0	A
AIR TO GROUND	14	171.8625		171.8625		A
9. Prepared By (Resource Unit Leader)			Approved By (Planning Section Chief)		Date	Time
NATHAN JEFFRIES			HOWARD JOHNSON		08/10/2021	2000

Division/Group Assignment List (ICS 204 WF)
Controlled Unclassified Information//Basic

1. Incident Name:			3.			
WHITMORE			Branch:		Division/Group	
2. Operational Period: DAY / NIGHT					F	
Date/Time From: 08/11/2021 0600 WED		Date/Time To: 08/12/2021 0600 THU				
4. Operations Personnel						
OPERATIONS CHIEF		MATT CASTLE; KURT RANTA (T) TONY ENGEL; JEFF BOUSCHOR		DIVISION/GROUP SUPERVISOR		LARRY LEACH JAMES DICKINSON (T)
SAFETY OFFICER		TROY CORN; JACK CATES DON WALLER (T)		AIR ATTACK SUPERVISOR		PAUL BALFOUR
5. Resources Assigned this Period						
Strike Team / Task Force / Resource Designator		LWD	Leader	Number Persons	Drop Off PT./Time	Pick Up PT./Time
E-113 UTV TOP GUN RESOURCES			-- UNSTAFFED --			
O-43 REMS 9 SPOKANE COUNTY FD9		08/19	CLINT JUNTUNEN	4	ICP/0600	ICP/1800
6. Control Operations/Work Assignments:						
<p>TASK - Contain fire south of Camp Progress, east of Road 103 and south of Road 1016. PURPOSE - Protect property and resources; limit further fire spread to the North and West. END STATE - Fireline is established and secured and fire is contained East of Peter Flat and Dan Nason Basin.</p>						
7. Special Instructions:						
<ul style="list-style-type: none"> Return all empty gas cans to supply! GPS all pump locations 						
8. Division/Group Communication Summary						
Function	Channel	RX Frequency N/W	RX Tone/NAC	TX Frequency N/W	TX Tone/NAC	Mode
TACTICAL	2	168.2000	146.2	168.2000	146.2	A
COMMAND	7	173.9250	146.2	169.8375	146.2	A
COMMAND	8	159.4275	192.8	151.2725	192.8	A
COMMAND	9	169.7250	88.5	164.2500	100.0	A
AIR TO GROUND	14	171.8625		171.8625		A
9. Prepared By (Resource Unit Leader)			Approved By (Planning Section Chief)		Date	Time
NATHAN JEFFRIES			HOWARD JOHNSON		08/10/2021	2000

Division/Group Assignment List (ICS 204 WF)
Controlled Unclassified Information//Basic

1. Incident Name:			3.			
WHITMORE			Branch:		Division/Group	
2. Operational Period: DAY / NIGHT					L	
Date/Time From: 08/11/2021 0600 WED		Date/Time To: 08/12/2021 0600 THU				
4. Operations Personnel						
OPERATIONS CHIEF		MATT CASTLE; KURT RANTA (T) TONY ENGEL; JEFF BOUSCHOR		DIVISION/GROUP SUPERVISOR		ROBERT HINDS
SAFETY OFFICER		TROY CORN; JACK CATES DON WALLER (T)		AIR OPERATIONS BRANCH DIRECTOR		PAUL BALFOUR
5. Resources Assigned this Period						
Strike Team / Task Force / Resource Designator		LWD	Leader	Number Persons	Drop Off PT./Time	Pick Up PT./Time
O-1.63 SOF2		08/20	JOHN BARNES	1	ICP/0600	ICP/1800
O-109 TFLD		08/23	IZAAK MCHENRY	1	ICP/0600	ICP/1800
O-84 HEQB		08/22	REESE SEWELL	1	ICP/0600	ICP/1800
O-135 HEQB		08/24	JOSHUA PERKINS	1	ICP/0600	ICP/1800
O-182 HEQB (T)		08/24	RICHARD ROCHA	1	ICP/0600	ICP/1800
O-185 FALM SWEDBERG CONTR		08/16	JEFALD WULFF	2	ICP/0600	ICP/1800
C-9 HC2I FLAGSTAFF IHC		08/22	MARK ADAMS	22	ICP/0600	ICP/1800
C-2 HC2 PACIFIC COAST CONTRACTING		08/13	NORBERTO PANTELEON	20	ICP/0600	ICP/1800
E-83 ENG6 TIMBERMANS TREE SERVICES		08/22	MARCUS ENICK	3	ICP/0600	ICP/1800
E-102 ENG3 ELEPHANT AHEAD VOL FD		08/18	CHRIS ANTAIS	4	ICP/0600	ICP/1800
E-103 ENG6 GE FORESTRY INC		08/22	ALVARO GONZALEZ	3	ICP/0600	ICP/1800
E-78 WTS2 COWBOY FIRE LLC		08/21	GREGORY WITSMAN	1	ICP/0600	ICP/1800
E-79 WTS2 SUGDEN FIRE		08/22	THOMAS SUGDEN	1	ICP/0600	ICP/1800
8. Division/Group Communication Summary						
Function	Channel	RX Frequency N/W	RX Tone/NAC	TX Frequency N/W	TX Tone/NAC	Mode
TACTICAL	3	168.6000	146.2	168.6000	146.2	A
COMMAND	7	173.9250	146.2	169.8375	146.2	A
COMMAND	8	159.4275	192.8	151.2725	192.8	A
COMMAND	9	169.7250	88.5	164.2500	100.0	A
AIR TO GROUND	14	171.8625		171.8625		A
9. Prepared By (Resource Unit Leader)			Approved By (Planning Section Chief)		Date	Time
NATHAN JEFFRIES			HOWARD JOHNSON		08/10/2021	2000

Division/Group Assignment List (ICS 204 WF)
Controlled Unclassified Information//Basic

1. Incident Name:				3.		
WHITMORE				Branch:	Division/Group L	
2. Operational Period: DAY / NIGHT						
Date/Time From: 08/11/2021 0600 WED		Date/Time To: 08/12/2021 0600 THU				
4. Operations Personnel						
OPERATIONS CHIEF		MATT CASTLE; KURT RANTA (T) TONY ENGEL; JEFF BOUSCHOR		DIVISION/GROUP SUPERVISOR		ROBERT HINDS
SAFETY OFFICER		TROY CORN; JACK CATES DON WALLER (T)		AIR OPERATIONS BRANCH DIRECTOR		PAUL BALFOUR
5. Resources Assigned this Period						
Strike Team / Task Force / Resource Designator		LWD	Leader	Number Persons	Drop Off PT./Time	Pick Up PT./Time
E-1 DOZ2 OWENS FREIGHT LINES		08/19	JEREMY ANNEN	2	ICP/0600	ICP/1800
E-96 DOZ4 OWENS FREIGHT		08/22	RON ANDERSON	2	ICP/0600	ICP/1800
E-184 DOZ3 TUNK CREEK		08/13	DARREL GREEN	2	ICP/0600	ICP/1800
E-198 DOZ2 IRON TRIANGLE		08/22	RICK SAUL	1	ICP/0600	ICP/1800
E-175 UTV TOP GUN RESOURCES			-- UNSTAFFED --			
E-177 UTV TOP GUN RESOURCES UTV			-- UNSTAFFED --			
E-67 AMBU2 LINCOLN COUNTY (BLS)		08/21	CORREY KRAUS	2	ICP/0600	ICP/1800
O-62 EMPF MEDIC 1		08/20	JOHN LIPSKER	1	ICP/0600	ICP/1800
6. Control Operations/Work Assignments:						
<p>TASK - Contain and secure fire perimeter west of Coyote Creek Road and south of Rd 1016. Burn out as needed. PURPOSE - Protect property and resources; limit further fire spread to the North. END STATE - Fireline is established and secured and fire is contained south of Highway 155.</p>						
7. Special Instructions:						
<ul style="list-style-type: none"> Return all empty gas cans to supply! GPS all pump locations 						
8. Division/Group Communication Summary						
Function	Channel	RX Frequency N/W	RX Tone/NAC	TX Frequency N/W	TX Tone/NAC	Mode
TACTICAL	3	168.6000	146.2	168.6000	146.2	A
COMMAND	7	173.9250	146.2	169.8375	146.2	A
COMMAND	8	159.4275	192.8	151.2725	192.8	A
COMMAND	9	169.7250	88.5	164.2500	100.0	A
AIR TO GROUND	14	171.8625		171.8625		A
9. Prepared By (Resource Unit Leader)			Approved By (Planning Section Chief)		Date	Time
NATHAN JEFFRIES			HOWARD JOHNSON		08/10/2021	2000

Division/Group Assignment List (ICS 204 WF)
Controlled Unclassified Information//Basic

1. Incident Name:			3.			
WHITMORE			Branch:		Division/Group	
2. Operational Period: DAY / NIGHT					M	
Date/Time From: 08/11/2021 0600 WED		Date/Time To: 08/12/2021 0600 THU				
4. Operations Personnel						
OPERATIONS CHIEF		MATT CASTLE; KURT RANTA (T) TONY ENGEL; JEFF BOUSCHOR		DIVISION/GROUP SUPERVISOR		MIKE JACKSON SAM STEINSHOUER (T)
SAFETY OFFICER		TROY CORN; JACK CATES DON WALLER (T)		AIR OPERATIONS BRANCH DIRECTOR		PAUL BALFOUR
5. Resources Assigned this Period						
Strike Team / Task Force / Resource Designator		LWD	Leader	Number Persons	Drop Off PT./Time	Pick Up PT./Time
O-1.63 SOF2		08/19	JOHN BARNES	1	ICP/0600	ICP/1800
C-13 HC2 OC FORESTRY INC		08/21	VALINE COLIN	20	ICP/0600	ICP/1800
E-11 ENG6 CONNECTICUT FIRE GROUP (UNAVAILABLE 8/11)		08/21	JOE BURNHAM	4	ICP/0600	ICP/1800
E-85 ENG6 OC FORESTRY		08/21	AARON ABEL	3	ICP/0600	ICP/1800
E-174 ENG6 MARYLAND FS TYPE 6		08/14	SERGIO CASTILLO	4		
E-192 ENG6 MID-COLUMBIA RESOURCES LLC		08/17	DAVID JOHNSON	3	ICP/0600	ICP/1800
E-197 ENG6 CHAFFEE CO FPD		08/22	BRIAN WELCH	3	ICP/0600	ICP/1800
E-185 WTS2 IA CONSTRUCTION & FIRE		08/13	TERRY BURR	1	ICP/0600	ICP/1800
E-76 WTS2 LEVI PICARD		08/21	LEVI PICARD	2	ICP/0600	ICP/1800
E-186 WTS2 BOULDER CREEK		08/11	JOE SCHOENMAKERS	1	ICP/0600	ICP/1800
E-130 SKG3 TUNK CREEK LLC		08/22	DYLAN GREEN	2	ICP/0600	ICP/1800
E-176 UTV TOP GUN RESOURCES UTV			-- UNSTAFFED --			
O-36 EMPF MEDIC 3		08/21	ROBERT SMITH	1	ICP/0600	ICP/1800
8. Division/Group Communication Summary						
Function	Channel	RX Frequency N/W	RX Tone/NAC	TX Frequency N/W	TX Tone/NAC	Mode
TACTICAL	4	166.7250	146.2	166.7250	146.2	A
COMMAND	7	173.9250	146.2	169.8375	146.2	A
COMMAND	8	159.4275	192.8	151.2725	192.8	A
COMMAND	9	169.7250	88.5	164.2500	100.0	A
AIR TO GROUND	14	171.8625		171.8625		A
9. Prepared By (Resource Unit Leader)			Approved By (Planning Section Chief)		Date	Time
NATHAN JEFFRIES			HOWARD JOHNSON		08/10/2021	2000

Division/Group Assignment List (ICS 204 WF)

Controlled Unclassified Information//Basic

1. Incident Name:				3.			
WHITMORE				Branch:		Division/Group	
2. Operational Period: DAY / NIGHT							
Date/Time From: 08/11/2021 0600 WED		Date/Time To: 08/12/2021 0600 THU		M			
4. Operations Personnel							
OPERATIONS CHIEF		MATT CASTLE; KURT RANTA (T) TONY ENGEL; JEFF BOUSCHOR		DIVISION/GROUP SUPERVISOR		MIKE JACKSON SAM STEINSHOUER (T)	
SAFETY OFFICER		TROY CORN; JACK CATES DON WALLER (T)		AIR OPERATIONS BRANCH DIRECTOR		PAUL BALFOUR	
5. Resources Assigned this Period							
Strike Team / Task Force / Resource Designator		LWD	Leader	Number Persons	Drop Off PT./Time	Pick Up PT./Time	
6. Control Operations/Work Assignments:							
<p>TASK - Secure fire line, mop up as needed. PURPOSE - Protect property and natural resources east of Lower Coyote Creek Road. END STATE - Fire is contained south of Coyote Creek Road. Structures south of the fire area are not threatened.</p>							
7. Special Instructions:							
<ul style="list-style-type: none"> Return all empty gas cans to supply! GPS all pump locations 							
8. Division/Group Communication Summary							
Function	Channel	RX Frequency N/W	RX Tone/NAC	TX Frequency N/W	TX Tone/NAC	Mode	
TACTICAL	4	166.7250	146.2	166.7250	146.2	A	
COMMAND	7	173.9250	146.2	169.8375	146.2	A	
COMMAND	8	159.4275	192.8	151.2725	192.8	A	
COMMAND	9	169.7250	88.5	164.2500	100.0	A	
AIR TO GROUND	14	171.8625		171.8625		A	
9. Prepared By (Resource Unit Leader)			Approved By (Planning Section Chief)			Date	Time
NATHAN JEFFRIES			HOWARD JOHNSON			08/10/2021	2000

Division/Group Assignment List (ICS 204 WF)
Controlled Unclassified Information//Basic

1. Incident Name:			3.			
WHITMORE			Branch:		Division/Group	
2. Operational Period: DAY / NIGHT					NIGHT NORTH	
Date/Time From: 08/11/2021 0600 WED		Date/Time To: 08/12/2021 0600 THU				
4. Operations Personnel						
OPERATIONS CHIEF		MATT CASTLE; KURT RANTA (T) TONY ENGEL; JEFF BOUSCHOR		DIVISION/GROUP SUPERVISOR		NICK SCHREINER
SAFETY OFFICER		TROY CORN; JACK CATES DON WALLER (T)		AIR ATTACK SUPERVISOR		PAUL BALFOUR
5. Resources Assigned this Period						
Strike Team / Task Force / Resource Designator		LWD	Leader	Number Persons	Drop Off PT./Time	Pick Up PT./Time
O-76 SOF2		08/21	RICHARD MCCONNELL	1	ICP/1800	ICP/0600
E-92 ENG6 JD FORESTRY REGION 6 NWCC		08/22	FELIX DROESCH	3	ICP/1800	ICP/0600
E-104 ENG6 JC OROZCO		08/23	JAVIER OROZCO	3	ICP/1800	ICP/0600
E-105 ENG6 NW FIRE PROTECTION DIST		08/22	JAMES ESTLE	3	ICP/1800	ICP/0600
E-221 WTS2 SUNDANCE 204		08/12	RODNEY FAY	1	ICP/1800	ICP/0600
E-169 DOZ4 BOULDER CREEK		08/24	TED HUNTER	2	ICP/1800	ICP/0600
O-176 EMT 1		08/16	REBECCA WELLMAN	1	ICP/1800	ICP/0600
6. Control Operations/Work Assignments:						
<p>TASK - Patrol and secure firelines in Divisions L/F. PURPOSE - Prevent additional fire spread to the north towards Highway 155. END STATE - Fire is contained within existing line locations.</p>						
7. Special Instructions:						
8. Division/Group Communication Summary						
Function	Channel	RX Frequency N/W	RX Tone/NAC	TX Frequency N/W	TX Tone/NAC	Mode
TACTICAL	5	166.7750	146.2	166.7750	146.2	A
COMMAND	7	173.9250	146.2	169.8375	146.2	A
COMMAND	8	159.4275	192.8	151.2725	192.8	A
COMMAND	9	169.7250	88.5	164.2500	100.0	A
AIR TO GROUND	14	171.8625		171.8625		A
9. Prepared By (Resource Unit Leader)			Approved By (Planning Section Chief)		Date	Time
NATHAN JEFFRIES			HOWARD JOHNSON		08/10/2021	2000

Division/Group Assignment List (ICS 204 WF)
Controlled Unclassified Information//Basic

1. Incident Name:			3.			
WHITMORE			Branch:		Division/Group	
2. Operational Period: DAY / NIGHT					NIGHT SOUTH	
Date/Time From: 08/11/2021 0600 WED		Date/Time To: 08/12/2021 0600 THU				
4. Operations Personnel						
OPERATIONS CHIEF		MATT CASTLE; KURT RANTA (T) TONY ENGEL; JEFF BOUSCHOR		DIVISION/GROUP SUPERVISOR		JEFF PRICHER
SAFETY OFFICER		TROY CORN; JACK CATES DON WALLER (T)		AIR OPERATIONS BRANCH DIRECTOR		PAUL BALFOUR
5. Resources Assigned this Period						
Strike Team / Task Force / Resource Designator		LWD	Leader	Number Persons	Drop Off PT./Time	Pick Up PT./Time
O-76 SOF2		08/21	RICHARD MCCONNELL	1	ICP/1800	ICP/0600
E-9 ENG6 AAA FORESTRY		08/20	CHRIS MARTIN	3	ICP/1800	ICP/0600
E-93 ENG6 ROCKY POINT WILDFIRE		08/22	KC FRYE	3	ICP/1800	ICP/0600
6. Control Operations/Work Assignments:						
<p>TASK - Patrol and secure structures as needed. Reduce risk to property. PURPOSE - Protect property and resources, Prevent further damage and loss to structures. END STATE - Fire is no longer threat to structures.</p>						
7. Special Instructions:						
8. Division/Group Communication Summary						
Function	Channel	RX Frequency N/W	RX Tone/NAC	TX Frequency N/W	TX Tone/NAC	Mode
TACTICAL	5	166.7750	146.2	166.7750	146.2	A
COMMAND	7	173.9250	146.2	169.8375	146.2	A
COMMAND	8	159.4275	192.8	151.2725	192.8	A
COMMAND	9	169.7250	88.5	164.2500	100.0	A
AIR TO GROUND	14	171.8625		171.8625		A
9. Prepared By (Resource Unit Leader)			Approved By (Planning Section Chief)		Date	Time
NATHAN JEFFRIES			HOWARD JOHNSON		08/10/2021	2000

AIR OPERATIONS SUMMARY

PREPARED BY: Paul Balfour

PREPARED DATE/TIME: August 10, 2021 1800hrs

INCIDENT NAME: WHITMORE	2. OPERATIONAL PERIOD: Date: 8/11/2021 Helibase Start Time: 0830 End Time: 2030 Sunrise: 0543 Sunset: 2018 (Times valid for Nespelem)
--	--

3. REMARKS (Safety Notes, Hazards, Air Operations Special Equipment, etc.): General Aviation, See & Avoid Bucket work, Retardant drops: ensure area is clear of ground personnel before dropping; watch for wires; be aware of potential for turbulence at ridge tops, saddles, canyons, etc *** BE AWARE OF FATIGUE, TAKE LONGER BREAKS WHEN FLYING IN SMOKEY CONDITIONS. *** Report all TFR intrusions to Air Operations, Air Support or Helibase as soon as possible.	4. MEDEVAC A/C: Contact Mt Tolman Fire Center 509-634-3100 N125CL Short Haul PSICC 425-783-6150	5. TFR #1/3986 Up to and including 9500msl 124.225 (A5)
---	---	--

PERSONNEL	Phone	7. FREQUENCIES	AM	FM	8. FIXED-WING	# Avail / Type/ Make-Model / FAA N# / Base(s)
AOBD: Paul Balfour O-1.40	509-993-8739	AIR/AIR Primary (A5)	124.225		Fixed Wing/Buckets	DIVS order thru ATGS if up, or Whitmore Communications
ASGS: Tim Lyda O-1.41	206-473-8560	AIR/AIR Secondary (A16)	134.050			
HEBM:		AIR/GROUND Primary (A-17)		171.8625	ATGS Aircraft	AA Mike Stout O-47 Kodiak N420Q (A20) LATs Order through Air Attack/AOBD Mt Tolman Dispatch
HEMG: Thomas Clay(A87)	208-630-4475	AIR/GROUND Secondary		156.0225 T-103.5		
HEMG: Randy Pyle	503-705-2734	Air Keller Flt Flw		Rx172.775 T-156.7		
ATGS: Mike Stout O-47	208-304-4237			Tx166.325 T-123.0	Unmanned Rotor 31	Drone Group, Mgr Greg Suszek 239-877-9545
Mt Tolman:	509-634-3100	Air/Grnd 03 IA		166.6125	NOTES:	Whitmore Helibase: N48 08 75 Elevation 1769 W118 59 00
Debbie Coudell	509-570-4133	A/G DNR IA		159.270 T-103.5		DECK: 163.100
Michelle	509-675-0675					email costs to timlyda22@gmail.com

9. HELICOPTERS

FAA N#	TY	MAKE/MODEL	BASE	START	AVAIL	REMARKS	FAA N#	TY	MAKE/MODEL	BASE	START	AVAIL	REMARKS
N47CU	1	Boeing CH47 (A87)	Omak	0800	0900	1000 Gallon Bucket	N448JS	1	Sikorsky S61	Helibase	0800	0900	Arrive 8/11 1000hrs

INCIDENT RADIO COMMUNICATIONS PLAN (ICS 205)

Controlled Unclassified Information//Basic

1. Incident Name:	2. Date/Time Prepared:	3. Operational Period: DAY / NIGHT	
WHITMORE	Date: 08/10/2021 Time: 2000	Date/Time From: 08/11/2021 0600 WED	Date/Time To: 08/12/2021 0600 THU

4. Basic Radio Channel Use:

Zone Group	Ch #	Function	Channel Name/Trunked Radio System Talkgroup	Assignment	RX Freq	RX Tone/NAC	TX Freq	TX Tone/NAC	Mode (A,D, or M)	Remarks
	1	TACTICAL	TAC 1	DIV A / Z / W / P	168.0500	146.2	168.0500	146.2	A	
	2	TACTICAL	TAC 2	DIV F	168.2000	146.2	168.2000	146.2	A	
	3	TACTICAL	TAC 3	DIV L	168.6000	146.2	168.6000	146.2	A	
	4	TACTICAL	TAC 4	DIV M	166.7250	146.2	166.7250	146.2	A	
	5	TACTICAL	TAC 5	NIGHT N / S	166.7750	146.2	166.7750	146.2	A	
	6	TACTICAL	TAC 6	DIV C	168.2500	146.2	168.2500	146.2	A	
	7	COMMAND	CMD 7	EAST OF FIRE	173.9250	146.2	169.8375	146.2	A	ARMSTRONG LO-LINKED TO CMD8
	8	COMMAND	CMD 8	NORTH OF FIRE	159.4275	192.8	151.2725	192.8	A	RIDGELINE N OF FIRE-LINKED TO CMD7
	9	COMMAND	CMD 9	ALL DIVS - BACKUP CMD	169.7250	88.5	164.2500	100.0	A	FIRE A-MOSES MTN
	10	COMMAND	MOSES	IA	169.7125	136.5	164.1625	100.0	A	FIRE B-MOSES MTN-IA ONLY
	11	TACTICAL	WA REDNET	STRUCTURE/CONTINGENCY	153.8300		153.8300		A	IA ONLY
	12	TACTICAL	C TAC	IA	166.9750	151.4	166.9750	151.4	A	IA ONLY
	13	AIR TO GROUND	ATG 03	IA	166.6125		166.6125		A	IA ONLY
	14	AIR TO GROUND	A/G PRI	PRIMARY	171.8625		171.8625		A	AIR TO GROUND PRIMARY
	15	AIR TO GROUND	A/G SEC	SECONDARY	156.0225	103.5	156.0225	103.5	A	LOW POWER ONLY
	16	AIR GUARD	AIRGUARD	AIRGUARD	168.6250		168.6250	110.9	A	EMERGENCY AIR ONLY

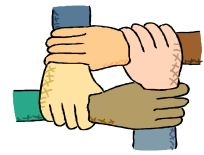
5. Special Instructions:

6. Prepared By (Communications Unit Leader)	Name: MISSY PARKER	Signature: <i>Missy Parker</i>
ICS 205	IAP Page	Date/Time: 08/10/2021 2000

Controlled Unclassified Information//Basic



Human Resource Message



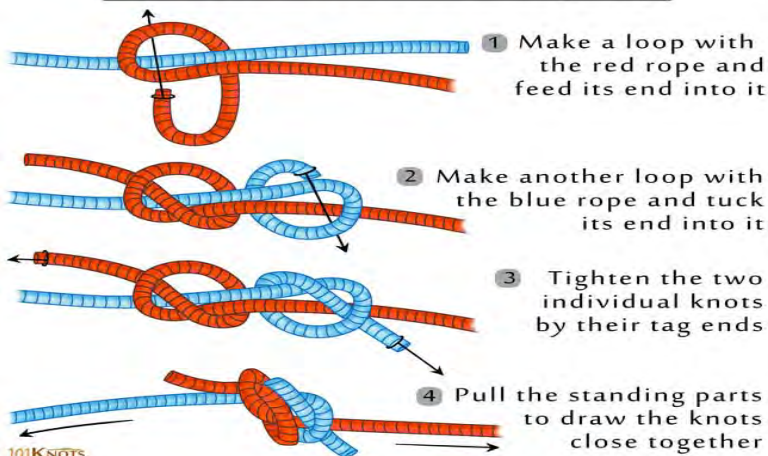
**Whitmore Fire
August 11, 2021**

Tolerance:

We ask you to be tolerant of ideas and or opinions that differ from your own. Keep an open mind and keep open the lines of communication which will help you resolve any differences of opinion amicably. It is okay to take a step back and think about your response vs just saying something off the top of your head in the heat of the moment.

It is easy to get burnt out and on edge with each other given the terrain, hard work, and extreme weather conditions. Be mindful of the language that you use as offensive or derogatory remarks are inappropriate and are not acceptable in a workplace. Working together as a team, displaying a positive attitude, and watching out for each other exemplifies leadership and professionalism.

Fisherman's Knot Tying



Quote for the Day:

“When you come to the end of your rope, tie a knot and hang on.”

-Franklin Roosevelt

**Hang in there, don't give up,
you've got this!**

Have a safe and productive day!



**Mutual Respect: You make the difference! Always treat people with Dignity and Respect!
Contact: NW Team 12 HRSP: Susie Manezes, 602-571-9327**

Logistics Message

Whitmore Fire

Supply Hours

Cache 0530 to 2200

Ordering 0600 to 2200

Ground Support

0600 to 2200

Kitchen Hours

Breakfast 0500 to 0900

Dinner 1700 to 2200

Shower Trailer Hours

0500-1200

1200-1400 Closed for Cleaning

1400-2200



Whitmore Fire Finance

FSC2 – Cheri Fuller, FSC2 (T) Christina Goebel

Personnel Time – Carol Long or Frances Tobia

Equipment Time & VIPR – Mark Bohnet or Todd Powell

Email : 2021.whitmore.finance@firenet.gov

Phone: 509-634-2013

Hours of operation 0530 – 2200

There is a box located outside of the ICP where CTRs and Shift Tickets can be left. Our ICPI Rob will be over at briefing area to turn in CTR/ST. If you have questions and need to talk to anyone in finance, please call the number above. You can also email us at the email.

Resources that need to contact finance

C-2

E-1 E-85 E-197

--

**Whitmore
WA-COA-200106**

Camp Map
Nespelem Community Center
08/10/2021 Day Shift



Camping Note:
Please respect
Tribal property
and remain 6 feet
away from all
structures.



S. Bushnell
07 20 21
Maxar, 2047 Hours

Incident Maps

For incident maps scan the QR code on the cover of the IAP to open the 'Current Maps' folder.

How to Download Maps in Avenza

If you're cell signal is poor you may need to connect to a wifi to download maps. However sometimes being connected to a wifi can slow map downloads. You'll just have to find out what works best.

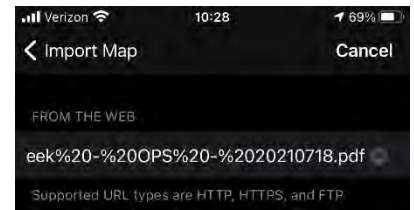
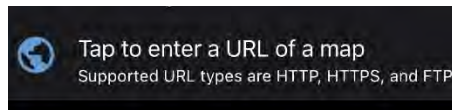
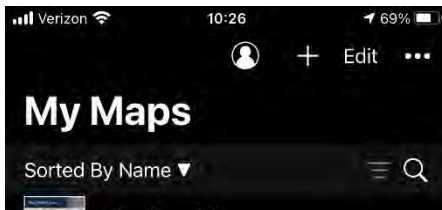
Method 1: From a browser - If you have a good cell or wifi signal

1. Tap on the desired map link and wait for the preview. *If it fails to load, use method 2 instead*
2. Tap the 'send to' icon (square with up arrow)
3. Choose the Avenza app



Method 2: From Avenza direct – if you don't have a good cell or wifi signal

1. Tap and hold on the desired map link, then choose 'copy' to copy the direct URL to the map
2. Launch the Avenza app
3. When not in any map... Tap the + (plus) icon at the top of the screen
4. Choose the load from URL option (last choice)
5. Paste the direct URL to the map
6. Tap 'Done' ; the map will begin downloading

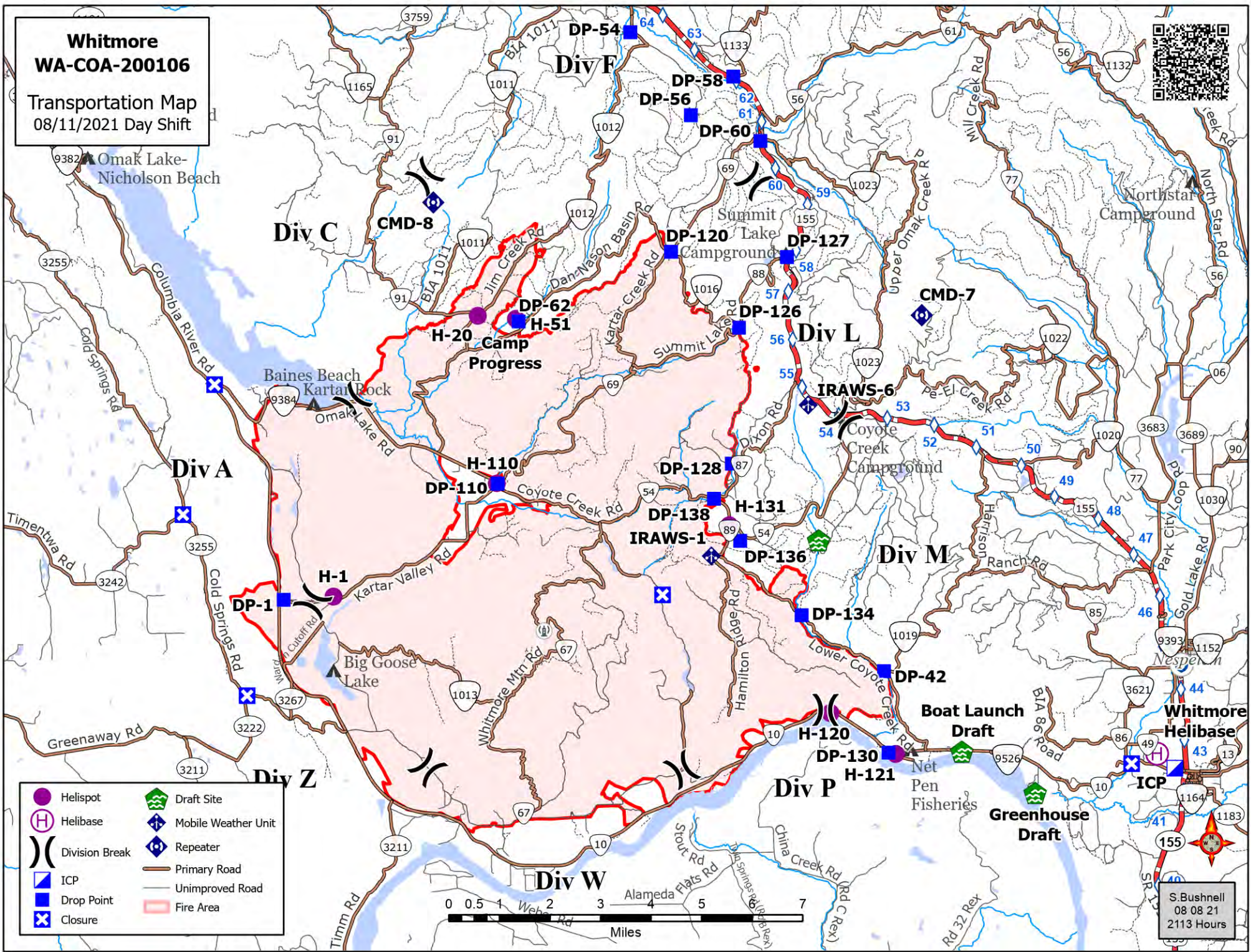


How to Send Map Updates to the Situation Unit

1. From within the map in Avenza, click the pin with three lines near the lower-right corner.
2. *iPhone:* In the lower right, click the square with up arrow. From the pop-up menu, choose Export to Others.
Android: In the lower right, click the circle with three lines. Click the pop-up circle with up arrow.
3. Set these options:
 - a. Filename – leave alone
 - b. Export Format – choose SHP, GPX or KML
 - c. Data – all features
 - d. Image size – no image
4. Click the Export button in the upper-right corner.
5. When the export is ready, choose your Mail application.
6. Email the update to 2021.whitmore.situation@firenet.gov.
7. If you have questions, call or text the Situation Unit at 360-584-3373.
8. Your email needs to include an explanation of the data you are sending and a contact phone number.

**Whitmore
WA-COA-200106**

Transportation Map
08/11/2021 Day Shift



WHITMORE FIRE COVID-19 MITIGATIONS

Supervisors are required to go over this list each morning with assigned resources- report any positive symptoms to medical unit.

In the last 24 hours have you experienced:

- Cough more than expected?
- Shortness of breath or difficulty breathing?
- Fever? Chills?
- Muscle pain, outside your normal for firefighting?
- Sore throat?
- New loss of taste or smell?
- Fatigue, outside your normal for firefighting?
- Headache, outside your normal for firefighting?
- Congestion or runny nose, outside your normal for firefighting?
- Nausea or vomiting
- Diarrhea

** Take temperature with no-touch thermometer, if available **



Wear a mask in fire camp regardless of vaccination status, unless outdoors and able to maintain at least 6ft of distance at all times, alone in an enclosed space or actively engaged in firefighting on the fireline.

Use the Zoom link provided to join briefings remotely.

Observe 6ft Distancing whenever possible.

Observe “Module as One” practices – only close contact with crew (engine, handcrew, etc.) that you live and work with all summer. Observe distancing and masking around everyone else. Do not co-mingle with other crews or “modules” in camp or on the line.

Send crew representatives to pick up meals - masks must be worn in food lines.

No entry to ICP building except Incident Management Team members

Wash hands frequently and disinfect high-traffic areas on a regular basis.

Limit close contact between firefighters and the public to prevent exposure and spread.

EMERGENCY PLAN

INCIDENT WITHIN AN INCIDENT

ON SCENE SUPERVISOR

In the event of an accident or medical incident of any size, your primary responsibility is to ENSURE that the victim(s) receive prompt and effective Triage, Treatment and Transportation.

- Conduct size-up of the incident (nature of accident, number type of resources involved, latitude and longitude location): notify incident communications center and supervisor, request assistance as needed.
- Order and coordinate medical and support response to the accident.
- Evaluate special needs (law enforcement, haz mat, etc.).
- Clear the command frequency if medical emergency; coordinate with incident communications and air attack for air medical transportation needs
- Preserve and photograph the scene for accident investigation.
- Remain aware of surroundings and the status of the main incident (delegate personnel to monitor the main fire) to ensure safety of medical treatment personnel.
- Until relieved, supervise and manage all personnel involved at the incident scene.
- **ENSURE THE MEDICAL INCIDENT REPORT IN THE INCIDENT ACTION PLAN IS BEING USED AND FOLLOWED.**

MEDICAL PLAN (ICS 206 WF)

20 Incident/Project Name		1. Operational Period						
Whitmore Fire		Date/Time 8/11/2021 0600-1900						
2. Ambulance Services								
Name	Complete Address	Phone	Advanced Life Support (ALS)					
			Yes	No				
Colville Tribal EMS Nespelem, WA	410 10 th St. Nespelem, WA 99155	911 - Dispatch 509-634-2472 509-978-9323		x				
Lifeline Ambulance	912 Koala Ave Omak, WA 98841	911 - Dispatch 509-663-8091	x					
3. Air Ambulance Services								
Name	Phone	Type of Aircraft & Capability						
Airlift Northwest	800-426-2430 or 911	Rotor in Wenatchee						
Life Flight Network	800-232-0911	2 Rotors, 1 Fixed Wing, Spokane						
4. Hospitals								
Name Complete Address	GPS Datum – WGS 84 Coordinate Standard Degrees Decimal Minutes DD° MM.MMM' N - Lat DD° MM.MMM' W - Long		Travel Time From ICP		Phone	Helipad		Level of Care Facility
	Air	Gnd	Yes	No				
Coulee Medical Center 411 Fortuyn Rd Grand Coulee, WA 99133	Lat:	44°56.5186' N	20 Min	40 Min	509-633-1753	x		Level 4 Trauma
	Long:	119°0.4333' W						
	VHF:							
Mid-Valley Hospital 912 Koala Ave Omak, WA 98841	Lat:	48°23.8336' N	40 Min	1Hr 14 min	509-826-1760	x		Level 4 Trauma
	Long:	119°32.8758' W						
	VHF:							
Confluence Health Hospital (Central Washington Hospital) 1201 S Miller St. Wenatchee, WA 98801	Lat:	47°24.4340' N	1Hr 10 Min	2 Hr 30 Min	509-662-1511	x		Level 2 Trauma
	Long:	120°19.3664' W						
	VHF :							
Harborview Medical 325 9 th Ave Seattle, WA 98104	Lat:	47°36.1897' N	2 Hr 15 Min	4 Hr 30 Min	541-222-6929	x		Level 1 Trauma Burn Center
	Long:	122°19.4759' W						
	VHF:							
5. Division Branch Group	Capability	Personnel						
Div A/W/Z/P		Unstaffed						
Div M		Medic 3 Justin Smith O-36						
Div L	Ambo 2 (BLS) E-67	Medic 1 Lipsker O-62						
Div C	Medic 2 Jennel Smith O-37	EMT 2 Lukowicz O-175 Ambo 1 (ALS) E-5						
Div F		REMS 9 O-43						
Night Shift North/South		EMT 1 Wellman O-176						
Structure Protection		Unstaffed						
6. Prepared By (Medical Unit Leader)		7. Date/Time	8. Reviewed By (Safety Officer)		9. Date/Time			
Eamonn Ryan, Diana Braun, Lee Venning (T) <i>Lee Venning</i>		08/10/2021 1800	<i>Don Waller</i>		08/10/2021 1800			

MEDICAL PLAN (ICS 206 WF)

Controlled Unclassified Information//Basic

Medical Incident Report

FOR A NON-EMERGENCY INCIDENT, WORK THROUGH CHAIN OF COMMAND TO REPORT AND TRANSPORT INJURED PERSONNEL AS NECESSARY.

FOR A MEDICAL EMERGENCY: IDENTIFY ON SCENE INCIDENT COMMANDER BY NAME AND POSITION AND ANNOUNCE "MEDICAL EMERGENCY" TO INITIATE RESPONSE FROM IMT COMMUNICATIONS/DISPATCH.

Use the following items to communicate situation to communications/dispatch.

1. CONTACT COMMUNICATIONS / DISPATCH (Verify correct frequency prior to starting report)

Ex: "Communications, Div. Alpha. Stand-by for Emergency Traffic."

2. INCIDENT STATUS: Provide incident summary (including number of patients) and command structure.

Ex: "Communications, I have a Red priority patient, unconscious, struck by a falling tree. Requesting air ambulance to Forest Road 1 at (Lat./Long.) This will be the Trout Meadow Medical, IC is TFLD Jones. EMT Smith is providing medical care."

Severity of Emergency / Transport Priority	<input type="checkbox"/> RED / PRIORITY 1 Life or limb threatening injury or illness. Evacuation need is IMMEDIATE <i>Ex: Unconscious, difficulty breathing, bleeding severely, 2° – 3° burns more than 4 palm sizes, heat stroke, disoriented.</i> <input type="checkbox"/> YELLOW / PRIORITY 2 Serious Injury or illness. Evacuation may be DELAYED if necessary. <i>Ex: Significant trauma, unable to walk, 2° – 3° burns not more than 1-3 palm sizes.</i> <input type="checkbox"/> GREEN / PRIORITY 3 Minor Injury or illness. Non-Emergency transport <i>Ex: Sprains, strains, minor heat-related illness.</i>	
Nature of Injury or Illness & Mechanism of Injury		<i>Brief Summary of Injury or Illness (Ex: Unconscious, Struck by Falling Tree)</i>
Transport Request		<i>Air Ambulance / Short Haul/Hoist Ground Ambulance / Other</i>
Patient Location		<i>Descriptive Location & Lat. / Long. (WGS84)</i>
Incident Name		<i>Geographic Name + "Medical" (Ex: Trout Meadow Medical)</i>
On-Scene Incident Commander		<i>Name of on-scene IC of Incident within an Incident (Ex: TFLD Jones)</i>
Patient Care		<i>Name of Care Provider (Ex: EMT Smith)</i>

3. INITIAL PATIENT ASSESSMENT: Complete this section for each patient as applicable (start with the most severe patient)

Patient Assessment: See IRPG page 106

Treatment:

4. TRANSPORT PLAN:

Evacuation Location (if different): (Descriptive Location (drop point, intersection, etc.) or Lat. / Long.) Patient's ETA to Evacuation Location:

Helispot / Extraction Site Size and Hazards:

5. ADDITIONAL RESOURCES / EQUIPMENT NEEDS:

Example: Paramedic/EMT, Crews, Immobilization Devices, AED, Oxygen, Trauma Bag, IV/Fluid(s), Splints, Rope rescue, Wheeled litter, HAZMAT, Extrication

6. COMMUNICATIONS: Identify State Air/Ground EMS Frequencies and Hospital Contacts as applicable

Function	Channel Name/Number	Receive (RX)	Tone/NAC *	Transmit (TX)	Tone/NAC *
COMMAND					
AIR-TO-GRND					
TACTICAL					

7. CONTINGENCY: Considerations: If primary options fail, what actions can be implemented in conjunction with primary evacuation method? Be thinking ahead.

8. ADDITIONAL INFORMATION: Updates/Changes, etc.

REMEMBER: Confirm ETA's of resources ordered. Act according to your level of training. Be Alert. Keep Calm. Think Clearly. Act Decisively.

Controlled Unclassified Information//Basic