

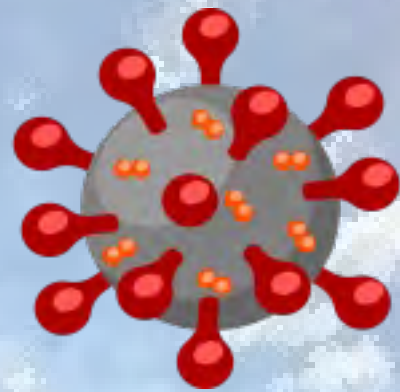
Incident Action Plan WHITMORE FIRE

August 12/13, 2021

0600-1800 Day Operational Period

1800-0600 Night Operational Period

WA-COA-200106
N7SC [P] (1522)
221 KTO



COVID MITIGATION

(Best Management Practices)

BRIEFING

Zoom REMOTE Briefing
Keep Social Distance when
listening!
Masks must be worn in
groups!

CHOW LINE

MUST Wash Hands!
Must Wear Mask!

ICP ACCESS

ICP Access limited to TEAM
personnel only.
Phone numbers listed in front
of ICP if you need help!



DOWNLOAD
IAP



SCAN TO
CHECK IN



DOWNLOAD
MAPS

<https://forms.office.com/g/agvAKcC86U>

MORNING BRIEFING @ 0600

Morning briefing will be a ZOOM call, use
the information below to connect:

Phone: 1-669-254-5252

Meeting ID: 160 329 1397

Passcode: 252064




SCAN QR code to JOIN VIA ZOOM

INCIDENT OBJECTIVES (ICS 202)

1. Incident Name:	2. Operational Period: DAY / NIGHT	
WHITMORE	Date/Time From: 08/12/2021 0600 THU	Date/Time To: 08/13/2021 0600 FRI
3. Objective(s):		
<p>Implement risk management practices for the safety of firefighters, other responders and the public as the first priority.</p> <p>Minimize impacts to private property, critical infrastructure, timber, cultural and natural resources including water, fish, wildlife, and range land.</p> <p>Maintain and strengthen community relationships and provide timely fire information to the public and cooperators.</p> <p>Establish and maintain all current COVID-19 mitigation protocols according to CDC and agency guidelines.</p>		
4. Operational Period Command Emphasis:		
Implement direct suppression tactics where safe to do so to minimize fire size, protect timber values and private property.		
General Situational Awareness:		
Monitor the weather conditions and base all actions on current and expected fire behavior.		
5. Site Safety Plan Required? Yes <input type="checkbox"/> No <input checked="" type="checkbox"/>		
Approved Site Safety Plan(s) Located		
6. Incident Action Plan (the items checked below are included in this Incident Action Plan):		
<input checked="" type="checkbox"/> ICS 202 <input checked="" type="checkbox"/> ICS 203 <input checked="" type="checkbox"/> ICS 204 <input checked="" type="checkbox"/> ICS 205 <input type="checkbox"/> ICS 205A <input checked="" type="checkbox"/> ICS 206	<input type="checkbox"/> ICS 207 <input type="checkbox"/> ICS 208 <input checked="" type="checkbox"/> ICS 220 <input checked="" type="checkbox"/> Map/Chart <input checked="" type="checkbox"/> Weather Forecast/Tides/Currents	Other Attachments: <input type="checkbox"/> _____ <input type="checkbox"/> _____ <input type="checkbox"/> _____ <input type="checkbox"/> _____
7. Prepared by: HOWARD JOHNSON Position/Title: PSC2	Signature: <i>Howard Johnson</i>	
8. Approved by Incident Commander:	Name: BOBBY SHINDELAR	Signature: <i>Bobby Shindelar</i>
ICS 202	IAP Page	Date/Time: 08/11/2021 2000

ORGANIZATION ASSIGNMENT LIST (ICS 203)

1. Incident Name:		2. Operational Period: DAY / NIGHT	
WHITMORE		Date/Time From: 08/12/2021 0600	THU Date/Time To: 08/13/2021 0600 FRI
3. Incident Commander(s) and Command Staff:		COMMUNICATIONS UNIT	MISSY PARKER
IC/UC	BOBBY SHINDELAR	MEDICAL UNIT	EAMONN RYAN; DIANA BRAUN LEE VENNING (T)
DEPUTY		FOOD UNIT	ALEXANDER LILLA
SAFETY OFFICER	TROY CORN JACK CATES; DON WALLER (T)		
INFORMATION OFFICER	MARY BEAN ROLAND EMETAZ		
LIAISON OFFICER	SCOTT CRAWFORD		
HUMAN RESOURCE SPECIALIST	SUSIE MANEZES		
HEALTH LIAISON	LIV STECKER	7. Operations Section:	
		OPS SECTION CHIEF	MATT CASTLE KURT RANTA (T)
		PLANNING OPS	JEFF BOUSCHOR JEROMY WILSON (T)
4. Agency/Organization Representative(s):			
Agency/Organization	Name		
COLVILLE AGENCY	PHIL WAPATO		
DNR	PAT RYAN	DIVISION/GROUP	A/Z/W/P NIKIA HERNANDEZ
		DIVISION/GROUP	C DAN OBERG
		DIVISION/GROUP	F LARRYLEACH JAMES DICKINSON (T)
5. Planning Section:		DIVISION/GROUP	L BOB HINDS
CHIEF	HOWARD JOHNSON JILL JOHNSON (T)	DIVISION/GROUP	M MIKE JACKSON SAM STEINSHOUER (T)
RESOURCES UNIT	NATHAN JEFFRIES (VIRTUAL)	DIVISION/GROUP	STRUCTURE/CONTINGENCY BRANDYN HARVEY
SITUATION UNIT	DAVE WISCHER	DIVISION/GROUP	NIGHT NORTH NICK SCHREINER
DOCUMENTATION UNIT		DIVISION/GROUP	NIGHT SOUTH NICK SCHREINER
DEMOBILIZATION UNIT	MIKE HESTON (VIRTUAL)	7b. Air Operations Branch:	
FIRE BEHAVIOR ANALYST	DON STRAND	AIR OPS BRANCH DIRECTOR	PAUL BALFOUR
GIS SPECIALIST	SHAWN BUSHNELL MIKE TONKEL (T)	AIR ATTACK SUPERVISOR	MIKE STOUT
TECHNOLOGY SUPPORT SPECIALIST	GEORGE JENKINS TODD MALLERY	AIR SUPPORT SUPERVISOR	TIM LYDA
INCIDENT METEOROLOGIST	BOB TOBIN	AIR TANKER COORDINATOR	
		8. Finance/Administration Section:	
		CHIEF	CHERI FULLER CHRISTINA GOEBEL (T)
6. Logistics Section:		TIME UNIT	CAROL LONG
CHIEF	DAN SOPTICH	COMPENSATION UNIT	CHERI FULLER
DEPUTY	KEVIN HAUGHTON	PROCUREMENT UNIT	MARK BOHNET
SUPPLY UNIT	JOHN KAUPA	COST UNIT	KATHLEEN HIGH (VIRTUAL)
FACILITIES UNIT	KAREN ZIRKLE		
GROUND SUPPORT UNIT	MARK ANDERSON		
9. Prepared By:	Name: JILL JOHNSON	Position/Title: PSC2 (T)	Signature: 
ICS 203	IAP Page	Date/Time: 08/11/2021 1619	

Fire Weather Forecast

FORECAST NO: 8
PREDICTION FOR: Thursday-Thursday night
Shift Date: August 12-13, 2021 0600-0600
TIME AND DATE
FORECAST ISSUED: 8/11/2021 at 2000

INCIDENT: Whitmore Fire
UNIT: Colville Reservation
SIGNED: Bob Tobin
Incident Meteorologist (IMET)

**...Red Flag Warning in effect through 8 PM PDT for Gusty Winds
and Low Relative Humidity...**

**...Excessive Heat Warning remains in effect until 8 PM PDT
Saturday...**

Weather Discussion: A weak disturbance under cutting the ridge will result in gusty northerly winds down the Okanogan Valley today. The winds should peak before noon, but will remain elevated through the afternoon. Slightly cooler temperatures today will give way to very warm and dry conditions Friday and Saturday. The first in a series of storm systems will move into the region on Sunday. This will bring a chance of showers and thunderstorms Saturday night and again Sunday. A deep upper level low will move into the region Sunday night for much cooler temperatures to begin the week.

WEATHER FORECAST:

Today:
SKY/WEATHER: Mostly sunny and warmer.
High Temperature...90-94 above 3000 feet and 95-101 below 3000 feet.
24hr Change...Down 2-4.
Min RH.....12-22 % above 3000 feet and 10-20% below 3000 feet.
24hr Change...Little Change.
20-FOOT WINDS: North-northeast 15-20 mph with gusts 25-30 mph...decreasing to north 10-12 mph gusts 15-20 mph after 1200.
CWR (>=0.10")....0% **LAL....**1 **Haines Index...4 (Low)** **Mixing Height...10000 ft AGL**

Tonight:
Weather: Clear.
Low Temperature...67-72.
Max RH.....35-45%
20-FOOT WINDS: North-northeast 8-10 mph.
CWR (>=0.10")....0% **LAL...1.**

Friday:
SKY/WEATHER: Partly cloudy.
High Temperature...94-98 above 3000 feet and 98-103 below 3000 feet.
Min RH.....10-20% above 3000 feet...10-20% below 3000 feet
20-FOOT WINDS: South-southwest 8-12 mph with gusts to 15 mph.
CWR (>=0.10").... 0% **LAL....1** **Haines Index...4 (Low)** **Mixing Height...10000 ft AGL**

Extended Outlook
Saturday...Variable clouds. A slight chance of thunderstorms Saturday night. Low 70-74...High 90-100. Min RH: 10-20% Southwest 8-10 mph in the morning.
Sunday...Mostly cloudy. A chance of showers and thunderstorms. Low: 65-70...High: 90-90. Min RH: 20-25% Winds: Southwest-west 8-12 mph with gusts to 20 mph.

FIRE BEHAVIOR FORECAST

FORECAST NUMBER: 8	TYPE OF FIRE: Wildland
FIRE NAME: Whitmore	OPERATIONAL PERIOD: Aug 12-13, 2021 Day-Night-Shift
DATE ISSUED: Aug 11, 2021	TIME ISSUED: 2000
UNIT: WA-COA	Don Strand FBAN

INPUTS

WEATHER SUMMARY:

Red Flag Warning in effect through 8 PM PDT for Gusty Winds and Low Relative Humidity

Mostly sunny and warmer. Max temp near 100, Min RH 15%. Winds- North-northeast 15 to 20 mph with gusts to 25 to 30 mph...decreasing to north 10-12 mph with gusts to 15-20 mph after 1200. Haines 4

OUTPUTS

FIRE BEHAVIOR

GENERAL:

- With the very dry fuels and forecasted weather, fire behavior potential today will be extremely high. Any spot fire that gets established in the timber litter fuels will be difficult to control. If a spot fire gets established in the lighter grass and sage brush fuels, potential for significant spread exists. Fire will remain active in areas with available fuels with potential to torch and spot. Expect higher fire intensities where there is wind/slope alignment.
- Fuels consist mixed conifer and pine with grass and brush. Logging slash is in scattered locations. There are some areas of regeneration from past timber harvest and 5 to 10-year-old fire scar regen with grass and brush understory. Much of the lower elevations are covered with grass and sagebrush with timbered stringers in the deep draws.
- Most spotting will be short range and also from roll outs on steeper ground. Most spotting will be short range although with wind gusts, spotting near 0.4 mile possible.
- **Probability of Ignition will be near 100% unshaded and 70% shaded during the warmest part of the day.**

SPECIFIC:

DIV A/Z/W/P: This portion of the fire will be the warmest and driest portion of the fire.

DIV C: Light grass and brush fuels will readily available for fire spread. Areas of dirty burns near fire lines have potential to flare up spot across fire lines. Potential for roll outs on steeper slopes. Winds may be squirrely due to mix of north winds and local upslope winds. Any spot fires in the adjacent fuels will rapidly spread.

DIV F: The fire edge continues to be held up on the mid-slope road and in places is below the mid-slope road. Pay attention of any roll outs that cross the road. Areas of dirty burn will continue to clean up. Potential exists for spots across line/road north of DP 120.

DIV L: Watch for flare ups and spotting in areas of dirty burns adjacent to fire lines. In areas of wind/slope alignment, expect more active fire behavior.

DIV M: Any flare ups in areas of dirty burns may possibly spot into lighter fuels and may be channeling of northerly winds along Little Coyote Creek.

Initial Attack: In the event we respond to a new start, any new start in the area will have potential for high rates of spread with torching and spotting. All fuels in the area are very receptive to fire. Hot and dry weather with high Probability of Ignition, any start will likely spot. Poor nighttime RH recovery will allow for 24-hour drying of fuels and increase the burning period.

NIGHT: Fire activity remaining from day shift will continue to be active well after dark due to forecasted poor RH recovery overnight. Continue to monitor for spots.

AIR OPERATIONS: Watch for turbulence in the complex terrain. Smoke haze may affect visibility.

SAFETY

- **When falling green hazard trees, potential exists for flare ups in the event top lands on hot spots**
- **Watch out where you walk. There are stump holes and soft dozer and road berms with buried burning material.**
- **Upslope up-valley winds with north winds over ridges – expect squirrely winds. Pay attention to smoke drift and potential for spotting along flanks.**
- **Remember fire is dynamic, so what you see in the morning will most like be different in the afternoon.**

Safety Message

12-13 August 2021

INCIDENT: Whitmore Fire

OPERATIONAL PERIOD: 0600-0600

TOPICS: UTV AND INCREASING TEMPERATURES



UTV Use

All employees must be trained and certified to operate a UTV as determined by home agency. Wear all personal protective equipment: **approved helmet**, gloves, eye protection, boots, long sleeve shirt. Use proper riding positions and all passengers must have and use safety belts. Maintain a safe and slow speed for the conditions. Never operate the UTV on hills too steep for the UTV or for your abilities. Travel straight uphill to the maximum extent practicable. If UTV begins to flip, quickly turn front wheels downhill, if possible, dismount on the uphill side. Ensure any loads are balanced and distributed correctly. Secure all loads as appropriate.

WARMER WEATHER --YDRATION/NUTRITION

- * Drink fluids throughout operational period (water/Gatorade) not energy drinks
- * Rotate crews out of smoky areas
- * Follow work / rest guidelines
- * Set a reasonable work pace and allow adequate rest breaks
- * For Heat Related Injuries refer to IRPG (2014) pg.103
- * Ensure adequate caloric intake.

--INCREASED FIRE BEHAVIOR

Temperatures will rise and RH will drop today. PIG and ERC will be on the rise. Pay close attention to unburned pockets of fuel for rate of spread and spotting potential. Maintain awareness of fire behavior on new starts if supporting local IA. Many fatalities and injuries occur in weather transition days where increased fire behavior is observed in light fuels.

SAFETY OFFICER: Troy Corn, Jack Cates, Don Waller (T)

Deliberate Risk Assessment-Hazard Summary

12-13 August 2021

Hazard	Mitigation	Post Risk
Hazard Trees	Use avoidance to limit exposure time. Snag ahead to avoid exposure. Use qualified fallers, blasting, or alternate methods if needed. Conduct on- going risk analysis of all work areas. Follow Hazard Tree Safety Guidelines (IRPG page 22).	High
Aircraft	Utilize Air Attack. Ensure all resources are a safe distance from all bucket and retardant drops. Utilize air to ground primary radio channel.	High
Steep Terrain/Gravity	Do not work crews above or below each other. Post lookouts for rolling material. Watch footing in loose soil, rock and around vegetation. Do not work below heavy equipment. Scout and identify travel routes.	Moderate
Physical Factors	Maintain hydration schedule. Closely monitor work rate and implement rest periods. Maintain nutrition. Ensure adequate work/rest.	Moderate
Extraction Time	Identify medivac sites and helispots. Initiate ground transport to accident site. Review IWI protocol to ensure familiarity.	High
Transportation	Signing of all incident roads that provide access to divisions. Practice defensive driving. In local communities obey the posted speed limits. Use reader boards to control entry as needed. Identify and evaluate contingency and alternate escape and travel routes.	High
Heavy Equipment	Post lookouts around equipment work areas. Establish communications with equipment boss and operator. Do not work down slope from equipment.	High
Transmission/Power Lines	Maintain one span radius from any downed line or compromised pole, be aware of smoke conductivity, report any downed lines or burning poles.	High
Initial Attack	Ensure identified IA resources are briefed of expectations and ensure communication plan is provided. Ensure resources are briefed on IA command structure. Provide identified crews with area maps.	Moderate
Unburned Fuels/Firing Ops	Ensure management action points are implemented and followed. Weather updates as needed during burning operations. Locate indirect firelines to minimize the amount of unburned fuels. Ensure communications between all firing operations. Establish road security at all firing sites. Follow approved firing plan for unburned fuels.	Moderate
Environmental Factors	Assess for known allergies and report to medical personnel. Obtain Bee/wasp spray and yellow jacket traps. Maintain an awareness of livestock and rattlesnakes.	Moderate
Fire Behavior	Be aware of burn windows and weather impacts and min/max RH for flashy fuels/local conditions. Report changes to FBAN and IMET.	Moderate
Communication	Evaluate for dead zones prior to engagement. Utilize human repeaters as needed. Ensure accountability of resources in problem areas. Be prepared if local traffic maximizes air time.	Moderate
Viral Transmission Mitigations, Communicable Disease	Maintain isolated ICP (remote briefings, etd), maintain social distancing, and wear face coverings in accordance with CDC recommendations. Report and isolate if not feeling well.	Low
Public Interaction	Place new road closures as necessary and maintain current closures. Provide signage on all perimeter roads warning of closures and fire activity. Request tribal police presence on SR155 access roads, Omak Lake and Columbia River Road. Maintain awareness of evacuation areas and provide accurate information dissemination.	Low

Division/Group Assignment List (ICS 204 WF)
Controlled Unclassified Information//Basic

1. Incident Name:				3.		
WHITMORE				Branch:	Division/Group C	
2. Operational Period: DAY / NIGHT						
Date/Time From: 08/12/2021 0600 THU		Date/Time To: 08/13/2021 0600 FRI				
4. Operations Personnel						
OPERATIONS CHIEF		MATT CASTLE; KURT RANTA (T) JEFF BOUSCHOR; JEROMY WILSON (T)		DIVISION/GROUP SUPERVISOR		DANIEL OBERG
SAFETY OFFICER		TROY CORN; JACK CATES DON WALLER (T)		AIR ATTACK SUPERVISOR		MIKE STOUT
5. Resources Assigned this Period						
Strike Team / Task Force / Resource Designator	LWD	Leader	Number Persons	Drop Off PT./Time	Pick Up PT./Time	
O-174 SOF2	08/23	PAUL BRNA	1	ICP/0600	ICP/1800	
E-8.1 TFLD	08/22	LAFE SACKETT	1	ICP/0600	ICP/1800	
O-185 FMOD SWEDBERG CONTRACTING	08/24	JAMES MCKIDDY	2	ICP/0600	ICP/1800	
C-3 HC2I MOCC INTERAGENCY CREW #4	08/21	TIMOTHY PERREN	20	ICP/0600	ICP/1800	
E-7 ENG6 OREGON WOODS, INC.	08/19	BEN COOK	3	ICP/0600	ICP/1800	
E-179 ENG3 WILDFIRE SUPPORT TEAM	08/25	JOEY DEMARTINO	3	ICP/0600	ICP/1800	
E-18 WTS2 PORTABLE ROCK PRODUCTION	08/19	JIMMY POWELL	1	ICP/0600	ICP/1800	
E-_____ WTS2 ELITE		TYLER PEASLEY	1	ICP/0600	ICP/1800	
E-5000 DOZ2 SCFD9*	08/20	MICHAEL WOLF	1	ICP/0600	ICP/1800	
E-110 UTV TOP GUN RESOURCES		-- UNSTAFFED --		ICP/0600	ICP/1800	
E-5 AMBU1 MED TRANSPORT (ALS)	08/21	JENNIFER BOSTWICK	2	ICP/0600	ICP/1800	
O-37 EMPF MEDIC 2	08/21	JENNEL SMITH	1	ICP/0600	ICP/1800	
O-175 EMT 2	08/18	KADY LUKOWICZ	1	ICP/0600	ICP/1800	
8. Division/Group Communication Summary						
Function	Channel	RX Frequency N/W	RX Tone/NAC	TX Frequency N/W	TX Tone/NAC	Mode
TACTICAL	6	168.2500	146.2	168.2500	146.2	A
COMMAND	7	173.9250	146.2	169.8375	146.2	A
COMMAND	8	159.4275	192.8	151.2725	192.8	A
COMMAND	9	169.7250	88.5	164.2500	100.0	A
AIR TO GROUND	14	171.8625		171.8625		A
9. Prepared By (Resource Unit Leader)			Approved By (Planning Section Chief)		Date	Time
NATHAN JEFFRIES			HOWARD JOHNSON		08/11/2021	2000

Division/Group Assignment List (ICS 204 WF)
Controlled Unclassified Information//Basic

1. Incident Name:			3.			
WHITMORE			Branch:		Division/Group	
2. Operational Period: DAY / NIGHT					C	
Date/Time From: 08/12/2021 0600 THU		Date/Time To: 08/13/2021 0600 FRI				
4. Operations Personnel						
OPERATIONS CHIEF		MATT CASTLE; KURT RANTA (T) JEFF BOUSCHOR; JEROMY WILSON (T)		DIVISION/GROUP SUPERVISOR		DANIEL OBERG
SAFETY OFFICER		TROY CORN; JACK CATES DON WALLER (T)		AIR ATTACK SUPERVISOR		MIKE STOUT
5. Resources Assigned this Period						
Strike Team / Task Force / Resource Designator		LWD	Leader	Number Persons	Drop Off PT./Time	Pick Up PT./Time
6. Control Operations/Work Assignments:						
<p>TASK - Mop up and secure completed fireline, scout and establish new firelines as necessary to keep fire East of Rattlesnake Creek and Peter Flat.</p> <p>PURPOSE - Protect property and resources; limit further fire spread to the West.</p> <p>END STATE - Fireline is established and secured and fire is contained East of Rattlesnake creek and Peter Flat.</p>						
7. Special Instructions:						
<ul style="list-style-type: none"> Return all empty gas cans to supply! GPS all pump locations <p>*=Resource identified for initial attack</p>						
8. Division/Group Communication Summary						
Function	Channel	RX Frequency N/W	RX Tone/NAC	TX Frequency N/W	TX Tone/NAC	Mode
TACTICAL	6	168.2500	146.2	168.2500	146.2	A
COMMAND	7	173.9250	146.2	169.8375	146.2	A
COMMAND	8	159.4275	192.8	151.2725	192.8	A
COMMAND	9	169.7250	88.5	164.2500	100.0	A
AIR TO GROUND	14	171.8625		171.8625		A
9. Prepared By (Resource Unit Leader)			Approved By (Planning Section Chief)		Date	Time
NATHAN JEFFRIES			HOWARD JOHNSON		08/11/2021	2000

Division/Group Assignment List (ICS 204 WF)
Controlled Unclassified Information//Basic

1. Incident Name:			3.			
WHITMORE			Branch:		Division/Group	
2. Operational Period: DAY / NIGHT					F	
Date/Time From: 08/12/2021 0600 THU		Date/Time To: 08/13/2021 0600 FRI				
4. Operations Personnel						
OPERATIONS CHIEF		MATT CASTLE; KURT RANTA (T) JEFF BOUSCHOR; JEROMY WILSON (T)		DIVISION/GROUP SUPERVISOR		LARRY LEACH JAMES DICKINSON (T)
SAFETY OFFICER		TROY CORN; JACK CATES DON WALLER (T)		AIR ATTACK SUPERVISOR		MIKE STOUT
5. Resources Assigned this Period						
Strike Team / Task Force / Resource Designator		LWD	Leader	Number Persons	Drop Off PT./Time	Pick Up PT./Time
O-1.61 SOF2		08/20	JOSHUA NORTHRUP	1	ICP/0600	ICP/1800
O-118 TFLD		08/22	TROY MAGUIRE	1	ICP/0600	ICP/1800
O-12 HEQB		08/21	TRAVIS BRUCH	1	ICP/0600	ICP/1800
O-186 FMOD TOP NOTCH		08/24	KYLE ARMIJO	2	ICP/0600	ICP/1800
C-7 HC1 LA GRANDE IHC		08/19	JOSH DIACETIS	20	ICP/0600	ICP/1800
C-1 HC2 GRIZZLY FIREFIGHTERS INC*		08/21	KARLA BEJAR	20	ICP/0600	ICP/1800
E-8 ENG6 NM-EMP NPS		08/22	ELI PINO	6	ICP/0600	ICP/1800
E-193 ENG6 THUNDERBOLT FIRE SERVICE		08/18	TOBY YAZZIE	3	ICP/0600	ICP/1800
E-206 ENG6 LATE SUMMERS*		08/24	BRADLEY BAKER	3	ICP/0600	ICP/1800
E-17 WTS2 FYR FLY LTD #68		08/19	LINN LAMB	1	ICP/0600	ICP/1800
E-19 WTS2 BOMBEROS WATER LLC		08/19	KURT FIGG-HOBLYN	1	ICP/0600	ICP/1800
E-187 WTS2 OWENS		08/19	FRANKLIN OWENS	1	ICP/0600	ICP/1800
E-2 DOZ2 SILVER-NICKEL LOGGING LLC		08/19	TOBY EPPERSON	2	ICP/0600	ICP/1800
E-20 DOZ2 BLM		08/22	BLAINE JEWETT	1	ICP/0600	ICP/1800
8. Division/Group Communication Summary						
Function	Channel	RX Frequency N/W	RX Tone/NAC	TX Frequency N/W	TX Tone/NAC	Mode
TACTICAL	2	168.2000	146.2	168.2000	146.2	A
COMMAND	7	173.9250	146.2	169.8375	146.2	A
COMMAND	8	159.4275	192.8	151.2725	192.8	A
COMMAND	9	169.7250	88.5	164.2500	100.0	A
AIR TO GROUND	14	171.8625		171.8625		A
9. Prepared By (Resource Unit Leader)			Approved By (Planning Section Chief)		Date	Time
NATHAN JEFFRIES			HOWARD JOHNSON		08/11/2021	2000

Division/Group Assignment List (ICS 204 WF)

Controlled Unclassified Information//Basic

1. Incident Name:			3.			
WHITMORE			Branch:		Division/Group	
2. Operational Period: DAY / NIGHT						
Date/Time From: 08/12/2021 0600 THU		Date/Time To: 08/13/2021 0600 FRI		F		
4. Operations Personnel						
OPERATIONS CHIEF		MATT CASTLE; KURT RANTA (T) JEFF BOUSCHOR; JEROMY WILSON (T)		DIVISION/GROUP SUPERVISOR		
				LARRY LEACH JAMES DICKINSON (T)		
SAFETY OFFICER		TROY CORN; JACK CATES DON WALLER (T)		AIR ATTACK SUPERVISOR		
				MIKE STOUT		
5. Resources Assigned this Period						
Strike Team / Task Force / Resource Designator		LWD	Leader	Number Persons	Drop Off PT./Time	Pick Up PT./Time
E-112 UTV TOP GUN RESOURCES			-- UNSTAFFED --		ICP/0600	ICP/1800
E-113 UTV TOP GUN RESOURCES			-- UNSTAFFED --		ICP/0600	ICP/1800
O-43 REMS 9 SPOKANE COUNTY FD9		08/19	CLINT JUNTUNEN	4	ICP/0600	ICP/1800
6. Control Operations/Work Assignments:						
<p>TASK - Contain fire south of Camp Progress, east of Road 103 and south of Road 1016. PURPOSE - Protect property and resources; limit further fire spread to the North and West. END STATE - Fireline is established and secured and fire is contained East of Peter Flat and Dan Nason Basin.</p>						
7. Special Instructions:						
<ul style="list-style-type: none"> Return all empty gas cans to supply! GPS all pump locations <p>*=Resource identified for initial attack</p>						
8. Division/Group Communication Summary						
Function	Channel	RX Frequency N/W	RX Tone/NAC	TX Frequency N/W	TX Tone/NAC	Mode
TACTICAL	2	168.2000	146.2	168.2000	146.2	A
COMMAND	7	173.9250	146.2	169.8375	146.2	A
COMMAND	8	159.4275	192.8	151.2725	192.8	A
COMMAND	9	169.7250	88.5	164.2500	100.0	A
AIR TO GROUND	14	171.8625		171.8625		A
9. Prepared By (Resource Unit Leader)			Approved By (Planning Section Chief)		Date	Time
NATHAN JEFFRIES			HOWARD JOHNSON		08/11/2021	2000

Division/Group Assignment List (ICS 204 WF)
Controlled Unclassified Information//Basic

1. Incident Name:			3.			
WHITMORE			Branch:		Division/Group	
2. Operational Period: DAY / NIGHT					L	
Date/Time From: 08/12/2021 0600 THU		Date/Time To: 08/13/2021 0600 FRI				
4. Operations Personnel						
OPERATIONS CHIEF		MATT CASTLE; KURT RANTA (T) JEFF BOUSCHOR; JEROMY WILSON (T)		DIVISION/GROUP SUPERVISOR		BOB HINDS
SAFETY OFFICER		TROY CORN; JACK CATES DON WALLER (T)		AIR ATTACK SUPERVISOR		MIKE STOUT
5. Resources Assigned this Period						
Strike Team / Task Force / Resource Designator		LWD	Leader	Number Persons	Drop Off PT./Time	Pick Up PT./Time
O-1.63 SOF2		08/20	JOHN BARNES	1	ICP/0600	ICP/1800
O-109 TFLD		08/23	IZAACK MCHENRY	1	ICP/0600	ICP/1800
O-84 HEQB		08/22	REESE SEWELL	1	ICP/0600	ICP/1800
O-135 HEQB		08/24	JOSHUA PERKINS	1	ICP/0600	ICP/1800
O-182 HEQB (T)		08/24	RICHARD ROCHA	1	ICP/0600	ICP/1800
O-239 FMOD SWEDBERG MODULE 3		08/25	JEFALD WULFF	2	ICP/0600	ICP/1800
C-9 HC2I FLAGSTAFF IHC		08/22	MARK ADAMS	22	ICP/0600	ICP/1800
C-2 HC2 PACIFIC COAST CONTRACTING		08/13	NORBERTO PANTELEON	20	ICP/0600	ICP/1800
C-13 HC2 OC FORESTRY INC		08/21	COLIN VALENNTAN	20	ICP/0600	ICP/1800
E-83 ENG6 TIMBERMANS TREE SERVICES		08/22	MARCUS ENICK	3	ICP/0600	ICP/1800
E-85 ENG6 OC FORESTRY		08/21	AARON ABEL	3	ICP/0600	ICP/1800
E-102 ENG3 ELEPHANT AHEAD VOL FD		08/18	CHRIS ANTAIS	4	ICP/0600	ICP/1800
E-103 ENG6 GE FORESTRY INC*		08/22	ALVARO GONZALEZ	3	ICP/0600	ICP/1800
E-174 ENG6 MARYLAND FS TYPE 6		08/14	SERGIO CASTILLO	4	ICP/0600	ICP/1800
E-76 WTS2 LEVI PICARD		08/21	LEVI PICARD/DENNY	3	ICP/0600	ICP/1800
E-78 WTS2 COWBOY FIRE LLC		08/21	GREGORY WITSMAN	1	ICP/0600	ICP/1800
E-79 WTS2 SUGDEN FIRE		08/22	THOMAS SUGDEN	1	ICP/0600	ICP/1800
8. Division/Group Communication Summary						
Function	Channel	RX Frequency N/W	RX Tone/NAC	TX Frequency N/W	TX Tone/NAC	Mode
TACTICAL	3	168.6000	146.2	168.6000	146.2	A
COMMAND	7	173.9250	146.2	169.8375	146.2	A
COMMAND	8	159.4275	192.8	151.2725	192.8	A
COMMAND	9	169.7250	88.5	164.2500	100.0	A
AIR TO GROUND	14	171.8625		171.8625		A
9. Prepared By (Resource Unit Leader)			Approved By (Planning Section Chief)		Date	Time
NATHAN JEFFRIES			HOWARD JOHNSON		08/11/2021	2000

Division/Group Assignment List (ICS 204 WF)
Controlled Unclassified Information//Basic

1. Incident Name:				3.		
WHITMORE				Branch:	Division/Group L	
2. Operational Period: DAY / NIGHT						
Date/Time From: 08/12/2021 0600 THU		Date/Time To: 08/13/2021 0600 FRI				
4. Operations Personnel						
OPERATIONS CHIEF		MATT CASTLE; KURT RANTA (T) JEFF BOUSCHOR; JEROMY WILSON (T)		DIVISION/GROUP SUPERVISOR		BOB HINDS
SAFETY OFFICER		TROY CORN; JACK CATES DON WALLER (T)		AIR ATTACK SUPERVISOR		MIKE STOUT
5. Resources Assigned this Period						
Strike Team / Task Force / Resource Designator		LWD	Leader	Number Persons	Drop Off PT./Time	Pick Up PT./Time
E-1 DOZ2 OWENS FREIGHT LINES		08/19	JEREMY ANNEN	2	ICP/0600	ICP/1800
E-96 DOZ4 OWENS FREIGHT		08/22	RON ANDERSON	2	ICP/0600	ICP/1800
E-184 DOZ3 TUNK CREEK		08/13	DARREL GREEN	2	ICP/0600	ICP/1800
E-198 DOZ2 IRON TRIANGLE		08/22	RICK SAUL	1	ICP/0600	ICP/1800
E-130 SKG3 TUNK CREEK LLC		08/22	DYLAN GREEN	2	ICP/0600	ICP/1800
E-175 UTV TOP GUN RESOURCES			-- UNSTAFFED --		ICP/0600	ICP/1800
E-176 UTV TOP GUN RESOURCES UTV			-- UNSTAFFED --		ICP/0600	ICP/1800
E-177 UTV TOP GUN RESOURCES UTV			-- UNSTAFFED --		ICP/0600	ICP/1800
E-67 AMBU 2 LINCOLN COUNTY (BLS)		08/21	CORREY KRAUS	2	ICP/0600	ICP/1800
O-62 EMPF MEDIC 1		08/20	JOHN LIPSKER	1	ICP/0600	ICP/1800
6. Control Operations/Work Assignments:						
<p>TASK - Contain and secure fire perimeter west of Coyote Creek Road and south of Rd 1016. Burn out as needed. PURPOSE - Protect property and resources; limit further fire spread to the North. END STATE - Fireline is established and secured and fire is contained south of Highway 155.</p>						
7. Special Instructions:						
<ul style="list-style-type: none"> Return all empty gas cans to supply! GPS all pump locations <p>*=Resource identified for initial attack</p>						
8. Division/Group Communication Summary						
Function	Channel	RX Frequency N/W	RX Tone/NAC	TX Frequency N/W	TX Tone/NAC	Mode
TACTICAL	3	168.6000	146.2	168.6000	146.2	A
COMMAND	7	173.9250	146.2	169.8375	146.2	A
COMMAND	8	159.4275	192.8	151.2725	192.8	A
COMMAND	9	169.7250	88.5	164.2500	100.0	A
AIR TO GROUND	14	171.8625		171.8625		A
9. Prepared By (Resource Unit Leader)			Approved By (Planning Section Chief)		Date	Time
NATHAN JEFFRIES			HOWARD JOHNSON		08/11/2021	2000

Division/Group Assignment List (ICS 204 WF)
Controlled Unclassified Information//Basic

1. Incident Name:			3.			
WHITMORE			Branch:		Division/Group	
2. Operational Period: DAY / NIGHT					M	
Date/Time From: 08/12/2021 0600 THU		Date/Time To: 08/13/2021 0600 FRI				
4. Operations Personnel						
OPERATIONS CHIEF		MATT CASTLE; KURT RANTA (T) JEFF BOUSCHOR; JEROMY WILSON (T)		DIVISION/GROUP SUPERVISOR		MIKE JACKSON SAM STEINSHOUER (T)
SAFETY OFFICER		TROY CORN; JACK CATES DON WALLER (T)		AIR ATTACK SUPERVISOR		MIKE STOUT
5. Resources Assigned this Period						
Strike Team / Task Force / Resource Designator		LWD	Leader	Number Persons	Drop Off PT./Time	Pick Up PT./Time
O-1.63 SOF2		08/19	JOHN BARNES	1	ICP/0600	ICP/1800
E-11 ENG6 CONNECTICUT FIRE GROUP*		08/21	JOE BURNHAM	4	ICP/0600	ICP/1800
E-192 ENG6 MID-COLUMBIA RESOURCES LLC		08/17	DAVID JOHNSON	3	ICP/0600	ICP/1800
E-197 ENG6 CHAFFEE CO FPD		08/22	BRIAN WELCH	3	ICP/0600	ICP/1800
E-185 WTS2 IA CONSTRUCTION & FIRE			TERRY BURR	1	ICP/0600	ICP/1800
E-186 WTS2 BOULDER CREEK		08/11	JOE SCHOENMAKERS	1	ICP/0600	ICP/1800
O-36 EMPF MEDIC 3		08/21	ROBERT SMITH	1	ICP/0600	ICP/1800
6. Control Operations/Work Assignments:						
<p>TASK - Secure fire line, mop up as needed. PURPOSE - Protect property and natural resources east of Lower Coyote Creek Road. END STATE - Fire is contained south of Coyote Creek Road. Structures south of the fire area are not threatened.</p>						
7. Special Instructions:						
<ul style="list-style-type: none"> Return all empty gas cans to supply! GPS all pump locations <p>*=Resource identified for initial attack</p>						
8. Division/Group Communication Summary						
Function	Channel	RX Frequency N/W	RX Tone/NAC	TX Frequency N/W	TX Tone/NAC	Mode
TACTICAL	4	166.7250	146.2	166.7250	146.2	A
COMMAND	7	173.9250	146.2	169.8375	146.2	A
COMMAND	8	159.4275	192.8	151.2725	192.8	A
COMMAND	9	169.7250	88.5	164.2500	100.0	A
AIR TO GROUND	14	171.8625		171.8625		A
9. Prepared By (Resource Unit Leader)			Approved By (Planning Section Chief)		Date	Time
NATHAN JEFFRIES			HOWARD JOHNSON		08/11/2021	2000

Division/Group Assignment List (ICS 204 WF)
Controlled Unclassified Information//Basic

1. Incident Name:			3.			
WHITMORE			Branch:		Division/Group	
2. Operational Period: DAY / NIGHT			STRUCTURE / CONTINGENCY			
Date/Time From: 08/12/2021 0600 THU		Date/Time To: 08/13/2021 0600 FRI				
4. Operations Personnel						
OPERATIONS CHIEF		MATT CASTLE; KURT RANTA (T) JEFF BOUSCHOR; JEROMY WILSON (T)		DIVISION/GROUP SUPERVISOR		BRANDYN HARVEY
SAFETY OFFICER		TROY CORN; JACK CATES DON WALLER (T)		AIR ATTACK SUPERVISOR		MIKE STOUT
5. Resources Assigned this Period						
Strike Team / Task Force / Resource Designator		LWD	Leader	Number Persons	Drop Off PT./Time	Pick Up PT./Time
6. Control Operations/Work Assignments:						
<p>TASK - Prepare structure protection plan for structures on the Highway 155 corridor. Scout and identify contingency line locations</p> <p>PURPOSE - Identify structures, resources needed and strategic plan for structure protection and contingency lines.</p> <p>END STATE - Plan is developed to protect structures in the Highway 155 corridor and contingency lines are identified and completed as necessary.</p>						
7. Special Instructions:						
8. Division/Group Communication Summary						
Function	Channel	RX Frequency N/W	RX Tone/NAC	TX Frequency N/W	TX Tone/NAC	Mode
COMMAND	7	173.9250	146.2	169.8375	146.2	A
COMMAND	8	159.4275	192.8	151.2725	192.8	A
COMMAND	9	169.7250	88.5	164.2500	100.0	A
TACTICAL	11	153.8300		153.8300		A
AIR TO GROUND	14	171.8625		171.8625		A
9. Prepared By (Resource Unit Leader)			Approved By (Planning Section Chief)		Date	Time
NATHAN JEFFRIES			HOWARD JOHNSON		08/11/2021	2000

Division/Group Assignment List (ICS 204 WF)
Controlled Unclassified Information//Basic

1. Incident Name:			3.			
WHITMORE			Branch:		Division/Group	
2. Operational Period: DAY / NIGHT					NIGHT NORTH	
Date/Time From: 08/12/2021 0600 THU		Date/Time To: 08/13/2021 0600 FRI				
4. Operations Personnel						
OPERATIONS CHIEF		MATT CASTLE; KURT RANTA (T) JEFF BOUSCHOR; JEROMY WILSON (T)		DIVISION/GROUP SUPERVISOR		NICK SCHREINER
SAFETY OFFICER		TROY CORN; JACK CATES DON WALLER (T)		AIR ATTACK SUPERVISOR		MIKE STOUT
5. Resources Assigned this Period						
Strike Team / Task Force / Resource Designator		LWD	Leader	Number Persons	Drop Off PT./Time	Pick Up PT./Time
O-76 SOF2		08/21	RICHARD MCCONNELL	1	ICP/1800	ICP/0600
C-15 HC1 FORT APACHE IHC		08/25	BRIAN QUINTERO	21	ICP/1800	ICP/0600
E-9 ENG6 AAA FORESTRY		08/20	CHRIS MARTIN	3	ICP/1800	ICP/0600
E-92 ENG6 JD FORESTRY REGION 6 NWCC		08/22	FELIX DROESCH	3	ICP/1800	ICP/0600
E-93 ENG6 ROCKY POINT WILDFIRE		08/22	KC FRY	3	ICP/1800	ICP/0600
E-104 ENG6 JC OROZCO		08/23	JAVIER OROZCO	3	ICP/1800	ICP/0600
E-105 ENG6 NW FIRE PROTECTION DIST		08/22	JAMES ESTLE	3	ICP/1800	ICP/0600
E-221 WTS2 SUNDANCE 204		08/12	RODNEY FAY	1	ICP/1800	ICP/0600
E-169 DOZ4 BOULDER CREEK		08/24	TED HUNTER	2	ICP/1800	ICP/0600
O-176 EMT 1		08/16	REBECCA WELLMAN	1	ICP/1800	ICP/0600
6. Control Operations/Work Assignments:						
TASK - Patrol and secure firelines in Divisions L/F. PURPOSE - Prevent additional fire spread to the north towards Highway 155. END STATE - Fire is contained within existing line locations.						
7. Special Instructions:						
8. Division/Group Communication Summary						
Function	Channel	RX Frequency N/W	RX Tone/NAC	TX Frequency N/W	TX Tone/NAC	Mode
TACTICAL	5	166.7750	146.2	166.7750	146.2	A
COMMAND	7	173.9250	146.2	169.8375	146.2	A
COMMAND	8	159.4275	192.8	151.2725	192.8	A
COMMAND	9	169.7250	88.5	164.2500	100.0	A
AIR TO GROUND	14	171.8625		171.8625		A
9. Prepared By (Resource Unit Leader)			Approved By (Planning Section Chief)		Date	Time
NATHAN JEFFRIES			HOWARD JOHNSON		08/11/2021	2000

AIR OPERATIONS SUMMARY

PREPARED BY: Paul Balfour

PREPARED DATE/TIME: August 11, 2021 1800hrs

INCIDENT NAME: WHITMORE	2. OPERATIONAL PERIOD: Date: 8/12/2021 Helibase Start Time: 0830 End Time: 2030 Sunrise: 0547 Sunset: 2016 (Times valid for Nespelem)
--	--

3. REMARKS (Safety Notes, Hazards, Air Operations Special Equipment, etc.): General Aviation, See & Avoid Bucket work, Retardant drops: ensure area is clear of ground personnel before dropping; watch for wires; be aware of potential for turbulence at ridge tops, saddles, canyons, etc *** BE AWARE OF FATIGUE, TAKE LONGER BREAKS WHEN FLYING IN SMOKEY CONDITIONS. *** Report all TFR intrusions to Air Operations, Air Support or Helibase as soon as possible.	4. MEDEVAC A/C: Contact Mt Tolman Fire Center 509-634-3100 N125CL Short Haul PSICC 425-783-6150	5. TFR #1/3986 Up to and including 9500msl 124.225 (A5)
---	---	--

PERSONNEL	Phone	7. FREQUENCIES	AM	FM	8. FIXED-WING	# Avail / Type/ Make-Model / FAA N# / Base(s)
AOBD: Paul Balfour O-1.40	509-993-8739	AIR/AIR Primary (A5)	124.225		Fixed Wing/Buckets	DIVS order thru ATGS if up, or Whitmore Communications
ASGS: Tim Lyda O-1.41	206-473-8560	AIR/AIR Secondary (A16)	134.050			
HEBM:		AIR/GROUND Primary (A-17)		171.8625	ATGS Aircraft	AA Mike Stout O-47 Kodiak N420Q (A20)
HEMG: Thomas Clay(A87)	208-630-4475	AIR/GROUND Secondary		156.0225 T-103.5		
HEMG: Randy Pyle (A34.4)	503-705-2734	Air Keller Flt Flw		Rx172.775 T-156.7	Unmanned Rotor 31	LATs Order through Air Attack/AOBD Mt Tolman Dispatch
ATGS: Mike Stout O-47	208-304-4237			Tx166.325 T-123.0		
Mt Tolman:	509-634-3100	Air/Grnd 03 IA		166.6125	NOTES:	Whitmore Helibase: N48 08 75 Elevation 1769 W118 59 00
Debbie Coudell	509-570-4133	A/G DNR IA		159.270 T-103.5		DECK: 163.100
Michelle	509-675-0675					email costs to timlyda22@gmail.com

9. HELICOPTERS

FAA N#	TY	MAKE/MODEL	BASE	START	AVAIL	REMARKS	FAA N#	TY	MAKE/MODEL	BASE	START	AVAIL	REMARKS
N47CU	1	Boeing CH47 (A87)	Omak	0800	0900	Thomas Clay Mgr	N448JS	1	Sikorsky S61	Helibase	0800	0900	Randy Pyle Mgr

INCIDENT RADIO COMMUNICATIONS PLAN (ICS 205)

Controlled Unclassified Information//Basic

1. Incident Name:	2. Date/Time Prepared:	3. Operational Period: DAY / NIGHT	
WHITMORE	Date: 08/11/2021 Time: 1619	Date/Time From: 08/12/2021 0600 THU	Date/Time To: 08/13/2021 0600 FRI

4. Basic Radio Channel Use:

Zone Group	Ch #	Function	Channel Name/Trunked Radio System Talkgroup	Assignment	RX Freq	RX Tone/NAC	TX Freq	TX Tone/NAC	Mode (A,D, or M)	Remarks
	1	TACTICAL	TAC 1	DIV A / Z / W / P	168.0500	146.2	168.0500	146.2	A	
	2	TACTICAL	TAC 2	DIV F	168.2000	146.2	168.2000	146.2	A	
	3	TACTICAL	TAC 3	DIV L	168.6000	146.2	168.6000	146.2	A	
	4	TACTICAL	TAC 4	DIV M	166.7250	146.2	166.7250	146.2	A	
	5	TACTICAL	TAC 5	NIGHT N / S	166.7750	146.2	166.7750	146.2	A	
	6	TACTICAL	TAC 6	DIV C	168.2500	146.2	168.2500	146.2	A	
	7	COMMAND	CMD 7	EAST OF FIRE	173.9250	146.2	169.8375	146.2	A	ARMSTRONG LO-LINKED TO CMD8
	8	COMMAND	CMD 8	NORTH OF FIRE	159.4275	192.8	151.2725	192.8	A	RIDGELINE N OF FIRE-LINKED TO CMD7
	9	COMMAND	CMD 9	ALL DIVS - BACKUP CMD	169.7250	88.5	164.2500	100.0	A	FIRE A-MOSES MTN
	10	COMMAND	MOSES	IA	169.7125	136.5	164.1625	100.0	A	FIRE B-MOSES MTN-IA ONLY
	11	TACTICAL	WA REDNET	STRUCTURE/CONTINGENCY	153.8300		153.8300		A	IA ONLY
	12	TACTICAL	C TAC	IA	166.9750	151.4	166.9750	151.4	A	IA ONLY
	13	AIR TO GROUND	ATG 03	IA	166.6125		166.6125		A	IA ONLY
	14	AIR TO GROUND	A/G PRI	PRIMARY	171.8625		171.8625		A	AIR TO GROUND PRIMARY
	15	AIR TO GROUND	A/G SEC	SECONDARY	156.0225	103.5	156.0225	103.5	A	LOW POWER ONLY
	16	AIR GUARD	AIRGUARD	AIRGUARD	168.6250		168.6250	110.9	A	EMERGENCY AIR ONLY

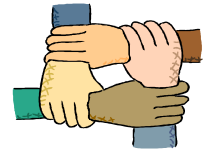
5. Special Instructions:

6. Prepared By (Communications Unit Leader)	Name: MISSY PARKER	Signature: <i>Missy Parker</i>
ICS 205	IAP Page	Date/Time: 08/11/2021 1619

Controlled Unclassified Information//Basic



Human Resource Message



Whitmore Fire - August 12, 2021 – 0600-0600

Communication: is simply the act of transferring information from one place, person, or group to another. Every communication involves (at least) one sender, a message, and a recipient. These include our emotions, the cultural situation, the medium used to communicate, and even our location.

We communicate every day in many ways regarding the “how, what, why and where”, which is so critical in wildland fire fighting. So, how do you know if what you said is understood by the recipients? That is a good question. Well, the answer to that is by the actions or reactions of those recipients. In this line of work, good communication is critical. To communicate well is to understand and be understood.

Misunderstandings often occur because we do not understand, and we are often misunderstood.

“Over here.”

“No, “over here.”



Be safe, have a great day, communicate effectively & respectfully!

De instrucciones claras y aseguré que son entendidas.

Food Donation Boxes located at lunch refrigerator and at the Division Breakout area. All donated food goes to the Nesperlem Food Distribution Center. Our way of providing people with a little more than they had the day before. Thank you!

Contact: Susie Manezes, HRSP at 602-571-9327 or smanezes@blm.gov

Logistics Message

Whitmore Fire

Supply Hours

Cache 0530 to 2200

Ordering 0600 to 2200

Ground Support

0600 to 2200

Kitchen Hours

Breakfast 0500 to 0900

Dinner 1700 to 2200

Shower Trailer Hours

0500-1200

1200-1400 Closed for Cleaning

1400-2200



Whitmore Fire Finance

FSC2 – Cheri Fuller, FSC2 (T) Christina Goebel

Personnel Time – Carol Long or Frances Tobia

Equipment Time & VIPR – Mark Bohnet or Todd Powell

Email : 2021.whitmore.finance@firenet.gov

Phone: 509-634-2013

Hours of operation 0530 – 2200

There is a box located outside of the ICP where CTRs and Shift Tickets can be left. Our ICPI Rob will be over at briefing area to turn in CTR/ST. If you have questions and need to talk to anyone in finance, please call the number above. You can also email us at the email.

Resources that need to contact finance

**Whitmore
WA-COA-200106**

**Camp Map
Nespelem Community Center**

08/10/2021 Day Shift



Camping Note:
Please respect
Tribal property
and remain 6 feet
away from all
structures.



S. Bushnell
07 20 21
Maxar, 2047 Hours

Incident Maps

For incident maps scan the QR code on the cover of the IAP to open the 'Current Maps' folder.

How to Download Maps in Avenza

If you're cell signal is poor you may need to connect to a wifi to download maps. However sometimes being connected to a wifi can slow map downloads. You'll just have to find out what works best.

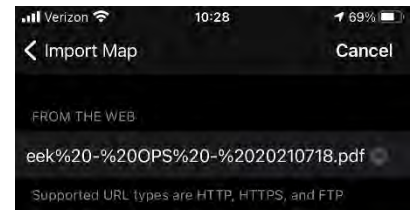
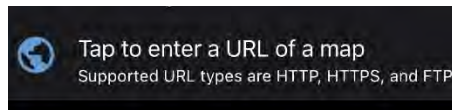
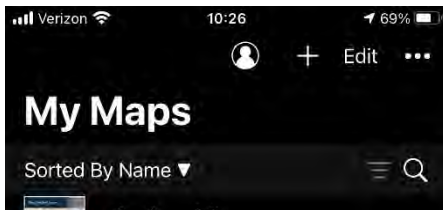
Method 1: From a browser - If you have a good cell or wifi signal

1. Tap on the desired map link and wait for the preview. *If it fails to load, use method 2 instead*
2. Tap the 'send to' icon (square with up arrow)
3. Choose the Avenza app



Method 2: From Avenza direct – if you don't have a good cell or wifi signal

1. Tap and hold on the desired map link, then choose 'copy' to copy the direct URL to the map
2. Launch the Avenza app
3. When not in any map... Tap the + (plus) icon at the top of the screen
4. Choose the load from URL option (last choice)
5. Paste the direct URL to the map
6. Tap 'Done' ; the map will begin downloading

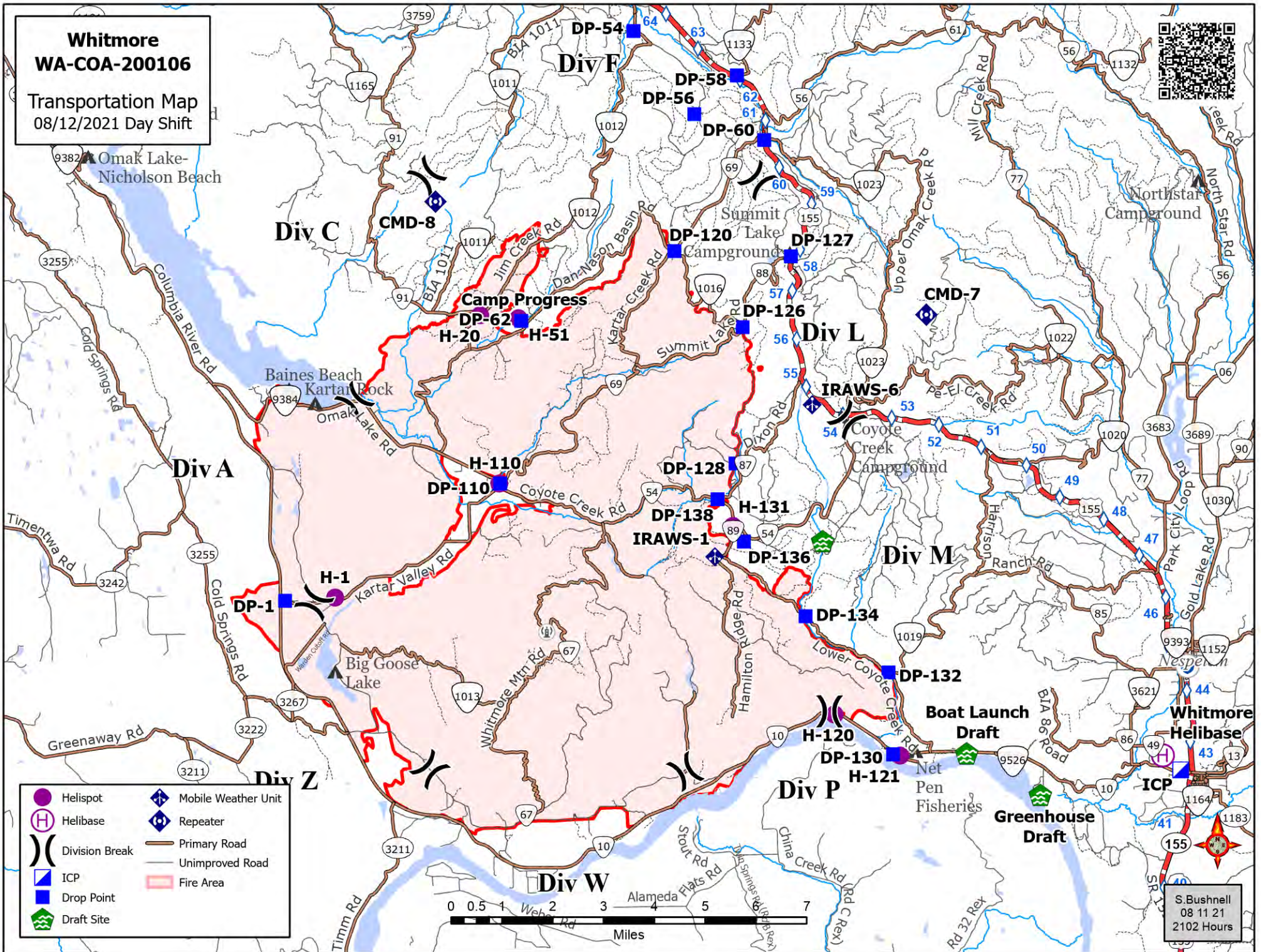


How to Send Map Updates to the Situation Unit

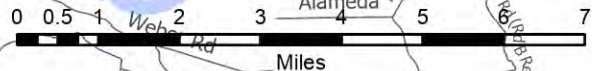
1. From within the map in Avenza, click the pin with three lines near the lower-right corner.
2. *iPhone:* In the lower right, click the square with up arrow. From the pop-up menu, choose Export to Others.
Android: In the lower right, click the circle with three lines. Click the pop-up circle with up arrow.
3. Set these options:
 - a. Filename – leave alone
 - b. Export Format – choose SHP, GPX or KML
 - c. Data – all features
 - d. Image size – no image
4. Click the Export button in the upper-right corner.
5. When the export is ready, choose your Mail application.
6. Email the update to 2021.whitmore.situation@firenet.gov.
7. If you have questions, call or text the Situation Unit at 360-584-3373.
8. Your email needs to include an explanation of the data you are sending and a contact phone number.

**Whitmore
WA-COA-200106**

Transportation Map
08/12/2021 Day Shift



- | | | | |
|--|----------------|--|---------------------|
| | Helispot | | Mobile Weather Unit |
| | Helibase | | Repeater |
| | Division Break | | Primary Road |
| | ICP | | Unimproved Road |
| | Drop Point | | Fire Area |
| | Draft Site | | |



S. Bushnell
08 11 21
2102 Hours

WHITMORE FIRE COVID-19 MITIGATIONS

Supervisors are required to go over this list each morning with assigned resources- report any positive symptoms to medical unit.

In the last 24 hours have you experienced:

- Cough more than expected?
- Shortness of breath or difficulty breathing?
- Fever? Chills?
- Muscle pain, outside your normal for firefighting?
- Sore throat?
- New loss of taste or smell?
- Fatigue, outside your normal for firefighting?
- Headache, outside your normal for firefighting?
- Congestion or runny nose, outside your normal for firefighting?
- Nausea or vomiting
- Diarrhea

** Take temperature with no-touch thermometer, if available **



Wear a mask in fire camp regardless of vaccination status, unless outdoors and able to maintain at least 6ft of distance at all times, alone in an enclosed space or actively engaged in firefighting on the fireline.

Use the Zoom link provided to join briefings remotely.

Observe 6ft Distancing whenever possible.

Observe “Module as One” practices – only close contact with crew (engine, handcrew, etc.) that you live and work with all summer. Observe distancing and masking around everyone else. Do not co-mingle with other crews or “modules” in camp or on the line.

Send crew representatives to pick up meals - masks must be worn in food lines.

No entry to ICP building except Incident Management Team members

Wash hands frequently and disinfect high-traffic areas on a regular basis.

Limit close contact between firefighters and the public to prevent exposure and spread.

EMERGENCY PLAN

INCIDENT WITHIN AN INCIDENT

ON SCENE SUPERVISOR

In the event of an accident or medical incident of any size, your primary responsibility is to ENSURE that the victim(s) receive prompt and effective Triage, Treatment and Transportation.

- Conduct size-up of the incident (nature of accident, number type of resources involved, latitude and longitude location): notify incident communications center and supervisor, request assistance as needed.
- Order and coordinate medical and support response to the accident.
- Evaluate special needs (law enforcement, haz mat, etc.).
- Clear the command frequency if medical emergency; coordinate with incident communications and air attack for air medical transportation needs
- Preserve and photograph the scene for accident investigation.
- Remain aware of surroundings and the status of the main incident (delegate personnel to monitor the main fire) to ensure safety of medical treatment personnel.
- Until relieved, supervise and manage all personnel involved at the incident scene.
- **ENSURE THE MEDICAL INCIDENT REPORT IN THE INCIDENT ACTION PLAN IS BEING USED AND FOLLOWED.**

MEDICAL PLAN (ICS 206 WF)

20 Incident/Project Name				1. Operational Period							
Whitmore Fire				Date/Time 8/12/2021 0600-1900							
2. Ambulance Services											
Name	Complete Address	Phone		Advanced Life Support (ALS)							
		Yes	No								
Colville Tribal EMS Nespelem, WA	410 10 th St. Nespelem, WA 99155	911 - Dispatch 509-634-2472 509-978-9323					x				
Lifeline Ambulance	912 Koala Ave Omak, WA 98841	911 - Dispatch 509-663-8091		x							
3. Air Ambulance Services											
Name		Phone		Type of Aircraft & Capability							
Airlift Northwest		800-426-2430 or 911		Rotor in Wenatchee							
Life Flight Network		800-232-0911		2 Rotors, 1 Fixed Wing, Spokane							
4. Hospitals											
Name Complete Address		GPS Datum – WGS 84 Coordinate Standard Degrees Decimal Minutes DD° MM.MMM' N - Lat DD° MM.MMM' W - Long		Travel Time From ICP Air Gnd		Phone		Helipad Yes No		Level of Care Facility	
Coulee Medical Center 411 Fortuyn Rd Grand Coulee, WA 99133		Long:	44°56.5186' N	Min	Min	509-633-1753	x		Level 4 Trauma		
		VHF:	119°0.4333' W								
Mid-Valley Hospital 912 Koala Ave Omak, WA 98841		Lat:	48°23.8336' N	40	1Hr	509-826-1760	x		Level 4 Trauma		
		Long:	119°32.8758' W	Min	14						
		VHF:			min						
Confluence Health Hospital (Central Washington Hospital) 1201 S Miller St. Wenatchee, WA 98801		Lat:	47°24.4340' N	1Hr	2 Hr	509-662-1511	x		Level 2 Trauma		
		Long:	120°19.3664' W	10	30						
		VHF :		Min	Min						
Harborview Medical 325 9 th Ave Seattle, WA 98104		Lat:	47°36.1897' N	2 Hr	4 Hr	541-222-6929	x		Level 1 Trauma Burn Center		
		Long:	122°19.4759' W	15	30						
		VHF:		Min	Min						
5. Division Branch Group		Capability				Personnel					
Div A/W/Z/P						Unstaffed					
Div M						Medic 3 Justin Smith O-36					
Div L		Ambo 2 (BLS) E-67						Medic 1 Lipsker O-62			
Div C		Medic 2 Jennel Smith O-37				EMT 2 Lukowicz O-175		Ambo 1 (ALS) E-5			
Div F						REMS 9 O-43					
Night Shift North/South						EMT 1 Wellman O-176					
Structure Protection						Unstaffed					
6. Prepared By (Medical Unit Leader)				7. Date/Time		8. Reviewed By (Safety Officer)		9. Date/Time			
Eamonn Ryan, Diana Braun, Lee Venning (T)				08/11/2021 1800				08/11/2021 1800			

MEDICAL PLAN (ICS 206 WF)

Controlled Unclassified Information//Basic

Medical Incident Report

FOR A NON-EMERGENCY INCIDENT, WORK THROUGH CHAIN OF COMMAND TO REPORT AND TRANSPORT INJURED PERSONNEL AS NECESSARY.

FOR A MEDICAL EMERGENCY: IDENTIFY ON SCENE INCIDENT COMMANDER BY NAME AND POSITION AND ANNOUNCE "MEDICAL EMERGENCY" TO INITIATE RESPONSE FROM IMT COMMUNICATIONS/DISPATCH.

Use the following items to communicate situation to communications/dispatch.

1. CONTACT COMMUNICATIONS / DISPATCH (Verify correct frequency prior to starting report)

Ex: "Communications, Div. Alpha. Stand-by for Emergency Traffic."

2. INCIDENT STATUS: Provide incident summary (including number of patients) and command structure.

Ex: "Communications, I have a Red priority patient, unconscious, struck by a falling tree. Requesting air ambulance to Forest Road 1 at (Lat./Long.) This will be the Trout Meadow Medical, IC is TFLD Jones. EMT Smith is providing medical care."

Severity of Emergency / Transport Priority	<input type="checkbox"/> RED / PRIORITY 1 Life or limb threatening injury or illness. Evacuation need is IMMEDIATE <i>Ex: Unconscious, difficulty breathing, bleeding severely, 2° – 3° burns more than 4 palm sizes, heat stroke, disoriented.</i> <input type="checkbox"/> YELLOW / PRIORITY 2 Serious Injury or illness. Evacuation may be DELAYED if necessary. <i>Ex: Significant trauma, unable to walk, 2° – 3° burns not more than 1-3 palm sizes.</i> <input type="checkbox"/> GREEN / PRIORITY 3 Minor Injury or illness. Non-Emergency transport <i>Ex: Sprains, strains, minor heat-related illness.</i>	
Nature of Injury or Illness & Mechanism of Injury		<i>Brief Summary of Injury or Illness (Ex: Unconscious, Struck by Falling Tree)</i>
Transport Request		<i>Air Ambulance / Short Haul/Hoist Ground Ambulance / Other</i>
Patient Location		<i>Descriptive Location & Lat. / Long. (WGS84)</i>
Incident Name		<i>Geographic Name + "Medical" (Ex: Trout Meadow Medical)</i>
On-Scene Incident Commander		<i>Name of on-scene IC of Incident within an Incident (Ex: TFLD Jones)</i>
Patient Care		<i>Name of Care Provider (Ex: EMT Smith)</i>

3. INITIAL PATIENT ASSESSMENT: Complete this section for each patient as applicable (start with the most severe patient)

Patient Assessment: See IRPG page 106

Treatment:

4. TRANSPORT PLAN:

Evacuation Location (if different): (Descriptive Location (drop point, intersection, etc.) or Lat. / Long.) Patient's ETA to Evacuation Location:

Helispot / Extraction Site Size and Hazards:

5. ADDITIONAL RESOURCES / EQUIPMENT NEEDS:

Example: Paramedic/EMT, Crews, Immobilization Devices, AED, Oxygen, Trauma Bag, IV/Fluid(s), Splints, Rope rescue, Wheeled litter, HAZMAT, Extrication

6. COMMUNICATIONS: Identify State Air/Ground EMS Frequencies and Hospital Contacts as applicable

Function	Channel Name/Number	Receive (RX)	Tone/NAC *	Transmit (TX)	Tone/NAC *
COMMAND					
AIR-TO-GRND					
TACTICAL					

7. CONTINGENCY: Considerations: If primary options fail, what actions can be implemented in conjunction with primary evacuation method? Be thinking ahead.

8. ADDITIONAL INFORMATION: Updates/Changes, etc.

REMEMBER: Confirm ETA's of resources ordered. Act according to your level of training. Be Alert. Keep Calm. Think Clearly. Act Decisively.

Controlled Unclassified Information//Basic