

# Whitmore Fire

FRIDAY — August 13-14, 2021

Dayshift — 0600-1800

Nightshift — 1800-0600

WA-COA-200106  
PAN7SC [P] (1522)  
221 KTO



CL-415 at OMAK LAKE



## MORNING BRIEFING @ 0600

Morning briefing will be a ZOOM call, use the information below to connect:

Phone: 1-669-254-5252

Meeting ID: 160 329 1397

Passcode: 252064



SCAN QR code to JOIN VIA ZOOM



DOWNLOAD  
IAP



SCAN TO  
CHECK IN



DOWNLOAD  
MAPS

<https://forms.office.com/g/agvAKcC86U>

INCIDENT ACTION PLAN


This page intentionally left blank.



## INCIDENT OBJECTIVES (ICS 202)

<b>1. Incident Name:</b>	<b>2. Operational Period: DAY / NIGHT</b>	
WHITMORE	Date/Time From: 08/13/2021 0600      FRI	Date/Time To: 08/14/2021 0600      SAT
<b>3. Objective(s):</b>		
<p>Implement risk management practices for the safety of firefighters, other responders and the public as the first priority.</p> <p>Minimize impacts to private property, critical infrastructure, timber, cultural and natural resources including water, fish, wildlife, and range land.</p> <p>Maintain and strengthen community relationships and provide timely fire information to the public and cooperators.</p> <p>Establish and maintain all current COVID-19 mitigation protocols according to CDC and agency guidelines.</p>		
<b>4. Operational Period Command Emphasis:</b>		
Implement direct suppression tactics where safe to do so to minimize fire size, protect timber values and private property.		
<b>General Situational Awareness:</b>		
Monitor the weather conditions and base all actions on current and expected fire behavior.		
<b>5. Site Safety Plan Required?</b> Yes <input type="checkbox"/> No <input checked="" type="checkbox"/>		
<b>Approved Site Safety Plan(s) Located</b>		
<b>6. Incident Action Plan</b> (the items checked below are included in this Incident Action Plan):		
<input checked="" type="checkbox"/> ICS 202 <input checked="" type="checkbox"/> ICS 203 <input checked="" type="checkbox"/> ICS 204 <input checked="" type="checkbox"/> ICS 205 <input type="checkbox"/> ICS 205A <input checked="" type="checkbox"/> ICS 206	<input type="checkbox"/> ICS 207 <input type="checkbox"/> ICS 208 <input checked="" type="checkbox"/> ICS 220 <input checked="" type="checkbox"/> Map/Chart <input checked="" type="checkbox"/> Weather Forecast/Tides/Currents	<b>Other Attachments:</b> <input type="checkbox"/> _____ <input type="checkbox"/> _____ <input type="checkbox"/> _____ <input type="checkbox"/> _____
<b>7. Prepared by:</b> HOWARD JOHNSON      Position/Title:      PSC2	Signature: <i>Howard Johnson</i>	
<b>8. Approved by Incident Commander:</b>	Name:      BOBBY SHINDELAR	Signature: <i>Bobby Shindelar</i>
<b>ICS 202</b>	<b>IAP Page</b>	Date/Time:      08/12/2021 2000

## ORGANIZATION ASSIGNMENT LIST (ICS 203)

<b>1. Incident Name:</b>		<b>2. Operational Period: DAY / NIGHT</b>	
WHITMORE		Date/Time From: 08/13/2021 0600	Date/Time To: 08/14/2021 0600
		FRI	SAT
<b>3. Incident Commander(s) and Command Staff:</b>		COMMUNICATIONS UNIT	MISSY PARKER
IC/UC	BOBBY SHINDELAR	MEDICAL UNIT	EAMONN RYAN; DIANA BRAUN LEE VENNING (T)
DEPUTY		FOOD UNIT	ALEXANDER LILLA
SAFETY OFFICER	TROY CORN JACK CATES; DON WALLER (T)		
INFORMATION OFFICER	MARY BEAN ROLAND EMETAZ		
LIAISON OFFICER	SCOTT CRAWFORD		
HUMAN RESOURCE SPECIALIST	SUSIE MANEZES		
HEALTH LIAISON	LIV STECKER		
		<b>7. Operations Section:</b>	
		OPS SECTION CHIEF	MATT CASTLE KURT RANTA (T)
		PLANNING OPS	JEFF BOUSCHOR JEROMY WILSON (T)
<b>4. Agency/Organization Representative(s):</b>			
<b>Agency/Organization</b>	<b>Name</b>		
COLVILLE AGENCY	PHIL WAPATO		
DNR	PAT RYAN		
		DIVISION/GROUP	A/Z/W/P
		DIVISION/GROUP	C
		DIVISION/GROUP	F
			NIKIA HERNANDEZ
			DAN OBERG
			LARRYLEACH JAMES DICKINSON (T)
		DIVISION/GROUP	L
		DIVISION/GROUP	M
			BOB HINDS
			MIKE JACKSON SAM STEINSHOUER (T)
		DIVISION/GROUP	STRUCTURE/CONTINGENCY
		DIVISION/GROUP	NIGHT
			BRANDYN HARVEY
			NICK SCHREINER
<b>5. Planning Section:</b>			
CHIEF	HOWARD JOHNSON JILL JOHNSON (T)		
RESOURCES UNIT	NATHAN JEFFRIES (VIRTUAL)		
SITUATION UNIT	DAVE WISCHER		
DOCUMENTATION UNIT			
DEMOBILIZATION UNIT	MIKE HESTON (VIRTUAL)		
FIRE BEHAVIOR ANALYST	DON STRAND		
GIS SPECIALIST	SHAWN BUSHNELL MIKE TONKEL (T)		
TECHNOLOGY SUPPORT SPECIALIST	GEORGE JENKINS TODD MALLERY		
INCIDENT METEOROLOGIST	BOB TOBIN		
		<b>7b. Air Operations Branch:</b>	
		AIR OPS BRANCH DIRECTOR	PAUL BALFOUR
		AIR ATTACK SUPERVISOR	MIKE STOUT
		AIR SUPPORT SUPERVISOR	TIM LYDA
		AIR TANKER COORDINATOR	
<b>8. Finance/Administration Section:</b>			
		CHIEF	CHERI FULLER CHRISTINA GOEBEL (T)
		TIME UNIT	CAROL LONG
		COMPENSATION UNIT	CHERI FULLER
		PROCUREMENT UNIT	MARK BOHNET
		COST UNIT	KATHLEEN HIGH (VIRTUAL)
<b>6. Logistics Section:</b>			
CHIEF	DAN SOPTICH		
DEPUTY	KEVIN HAUGHTON		
SUPPLY UNIT	JOHN KAUPA		
FACILITIES UNIT	KAREN ZIRKLE		
GROUND SUPPORT UNIT	MARK ANDERSON		
<b>9. Prepared By:</b>	<b>Name:</b> JILL JOHNSON	<b>Position/Title:</b> PSC2 (T)	<b>Signature:</b> 
ICS 203	IAP Page	<b>Date/Time:</b> 08/12/2021 2000	

**Fire Weather Forecast**

**FORECAST NO:** 9  
**PREDICTION FOR:** Friday-Friday night  
**Shift Date:** August 13-14, 2021 0600-0600  
**TIME AND DATE**  
**FORECAST ISSUED:** 8/12/2021 at 2000

**INCIDENT:** Whitmore Fire  
**UNIT:** Colville Reservation  
**SIGNED:** Bob Tobin  
**Incident Meteorologist (IMET)**

---

**...Excessive Heat Warning remains in effect until 8 PM PDT  
Saturday...**

**Weather Discussion:** High pressure will strengthen Friday and early Saturday before the region comes under the influence of a weakening low pressure system Sunday. The dry cold front is expected to move through the region Sunday night. As such, expect warm and dry conditions through Sunday afternoon, then a quick cool down for Monday and through at least the middle of next week. This storm will have little if any precipitation involved with it, although the Cascades may pick up some rain. The Whitmore Fire will remain dry. It will be breezy/gusty at times as this system moves through the region.

**WEATHER FORECAST:**

**Today:**

**SKY/WEATHER:** Mostly sunny and warmer.  
**High Temperature...**94-99 above 3000 feet and 98-103 below 3000 feet.  
**24hr Change...**Up 3-6.  
**Min RH.....**12-22 % above 3000 feet and 10-20% below 3000 feet.  
**24hr Change...**Little Change.  
**20-FOOT WINDS:** Southwest winds 10-12 mph with gusts to 15 mph.  
**CWR (>=0.10")....**0% **LAL....**1 **Haines Index...4 (Low)** **Mixing Height...9500 ft AGL**

**Tonight:**

**Weather:** Clear.  
**Low Temperature...**65-70.  
**Max RH.....**40-50%  
**20-FOOT WINDS:** North-northeast 8-10 mph.  
**CWR (>=0.10")....**0% **LAL...1.**

**Saturday:**

**SKY/WEATHER:** Partly cloudy.  
**High Temperature...**97-101 above 3000 feet and 100-105 below 3000 feet.  
**Min RH.....**10-20% above 3000 feet...10-20% below 3000 feet  
**20-FOOT WINDS:** South-southwest 10-12 mph with gusts to 15 mph.  
**CWR (>=0.10")....** 0% **LAL....**1 **Haines Index...5 (Moderate)** **Mixing Height...10500 ft AGL**

**Extended Outlook**

**Sunday...**Mostly cloudy. A slight chance of showers and thunderstorms. Low: 68-72...High: 85-92. Min RH: 15-25% Winds: Southwest-west 10-15 mph with gusts to 25 mph.  
**Monday...**Variable clouds. A slight chance of showers and thunderstorms. Low 62-67...High 75-85. Min RH: 10-20% Northwest-northeast 10-15 mph with gusts to 20 mph.

# FIRE BEHAVIOR FORECAST

FORECAST NUMBER: 9	TYPE OF FIRE: Wildland
FIRE NAME: Whitmore	OPERATIONAL PERIOD: Aug 13-14, 2021 Day-Night-Shift
DATE ISSUED: Aug 12, 2021	TIME ISSUED: 2000
UNIT: WA-COA	Don Strand FBAN

## INPUTS

### WEATHER SUMMARY:

#### Red Flag Warning in effect through 8 PM PDT for Gusty Winds and Low Relative Humidity

Mostly sunny and warmer. Max temp near 100, Min RH 15%. Winds- North-northeast 15 to 20 mph with gusts to 25 to 30 mph...decreasing to north 10-12 mph with gusts to 15-20 mph after 1200. Haines 4

## OUTPUTS

### FIRE BEHAVIOR

#### GENERAL:

- With the very dry fuels and forecasted weather, fire behavior potential today will be extremely high. Any spot fire that gets established in the timber litter fuels will be difficult to control. If a spot fire gets established in the lighter grass and sage brush fuels, potential for significant spread exists. Fire will remain active in areas with available fuels with potential to torch and spot. Expect higher fire intensities where there is wind/slope alignment.
- Fuels consist mixed conifer and pine with grass and brush. Logging slash is in scattered locations. There are some areas of regeneration from past timber harvest and 5 to 10-year-old fire scar regen with grass and brush understory. Much of the lower elevations are covered with grass and sagebrush with timbered stringers in the deep draws.
- Most spotting will be short range and also from roll outs on steeper ground. Most spotting will be short range although with wind gusts, spotting near 0.4 mile possible.
- **Probability of Ignition will be near 100% unshaded and 70% shaded during the warmest part of the day.**

#### SPECIFIC:

**DIV A/Z/W/P:** This portion of the fire will be the warmest and driest portion of the fire.

**DIV C:** Light grass and brush fuels will readily available for fire spread. Areas of dirty burns near fire lines have potential to flare up spot across fire lines. Potential for roll outs on steeper slopes. Winds may be squirrely due to mix of north winds and local upslope winds. Any spot fires in the adjacent fuels will rapidly spread.

**DIV F:** The fire edge continues to be held up on the mid-slope road and in places is below the mid-slope road. Pay attention of any roll outs that cross the road. Areas of dirty burn will continue to clean up. Potential exists for spots across line/road north of DP 120.

**DIV L:** Watch for flare ups and spotting in areas of dirty burns adjacent to fire lines. In areas of wind/slope alignment, expect more active fire behavior.

**DIV M:** Any flare ups in areas of dirty burns may possibly spot into lighter fuels and may be channeling of northerly winds along Little Coyote Creek.

**Initial Attack:** In the event we respond to a new start, any new start in the area will have potential for high rates of spread with torching and spotting. All fuels in the area are very receptive to fire. Hot and dry weather with high Probability of Ignition, any start will likely spot. Poor nighttime RH recovery will allow for 24-hour drying of fuels and increase the burning period.

**NIGHT:** Fire activity remaining from day shift will continue to be active well after dark due to forecasted poor RH recovery overnight. Continue to monitor for spots.

**AIR OPERATIONS:** Watch for turbulence in the complex terrain. Smoke haze may affect visibility.

## SAFETY

- **When falling green hazard trees, potential exists for flare ups in the event top lands on hot spots**
- **Watch out where you walk. There are stump holes and soft dozer and road berms with buried burning material.**
- **Upslope up-valley winds with north winds over ridges – expect squirrely winds. Pay attention to smoke drift and potential for spotting along flanks.**
- **Remember fire is dynamic, so what you see in the morning will most like be different in the afternoon.**

# Safety Message

13-14 August 2021

**INCIDENT: Whitmore Fire**

**OPERATIONAL PERIOD: 0600-0600**

**TOPICS: MISSION CREEP and MEDICAL INCIDENTS**

## **Mission Creep**

Mission Creep is the expansion of a mission or task beyond original objectives or assignment. In our business this is most often undesirable unless serious life considerations are at risk. Many times, Mission Creep will continue once started until catastrophic failure or undesirable outcomes are encountered. Plans are built based on set and measurable objectives. Stay in your lane and avoid the urge to creep!

## **ICS206: MEDICAL RESOURCE SUMMARY**

The IAP has a resource (**ICS206**) that shows medical resource information to include assigned medical personnel, medical equipment, helispots and transport times (air and ground). This is to be used with the **Medical Incident Report (MIR)** that can be found at the end of the IAP or IRPG. Practice how to use the 206 and MIR together!!!!

**SAFETY OFFICER: Troy Corn, Jack Cates, Don Waller (T)**

# Deliberate Risk Assessment-Hazard Summary

## 13-14 August 2021

Hazard	Mitigation	Post Risk
<b>Hazard Trees</b>	Use avoidance to limit exposure time. Snag ahead to avoid exposure. Use qualified fallers, blasting, or alternate methods if needed. Conduct on- going risk analysis of all work areas. Follow Hazard Tree Safety Guidelines (IRPG page 22).	<b>High</b>
<b>Initial Attack</b>	Ensure identified IA resources are briefed of expectations and ensure communication plan is provided. Ensure resources are briefed on IA command structure. Provide identified crews with area maps.	Moderate
<b>Steep Terrain/Gravity</b>	Do not work crews above or below each other. Post lookouts for rolling material. Watch footing in loose soil, rock and around vegetation. Do not work below heavy equipment. Scout and identify travel routes.	Moderate
<b>Physical Factors</b>	<b>Maintain hydration schedule.</b> Closely monitor work rate and implement rest periods. Maintain nutrition. Ensure adequate work/rest.	Moderate
Extraction Time	Identify medivac sites and helispots. Initiate ground transport to accident site. Review IWI protocol to ensure familiarity.	<b>High</b>
Transportation	Signing of all incident roads that provide access to divisions. Practice defensive driving. In local communities obey the posted speed limits. Use reader boards to control entry as needed. Identify and evaluate contingency and alternate escape and travel routes.	<b>High</b>
Heavy Equipment	Post lookouts around equipment work areas. Establish communications with equipment boss and operator. Do not work down slope from equipment.	<b>High</b>
Transmission/Power Lines	Maintain one span radius from any downed line or compromised pole, be aware of smoke conductivity, report any downed lines or burning poles.	<b>High</b>
Aircraft	Utilize Air Attack. Ensure all resources are a safe distance from all bucket and retardant drops. Utilize air to ground primary radio channel.	High
Initial Attack	Ensure identified IA resources are briefed of expectations and ensure communication plan is provided. Ensure resources are briefed on IA command structure. Provide identified crews with area maps.	Moderate
Unburned Fuels/Firing Ops	Ensure management action points are implemented and followed. Weather updates as needed during burning operations. Locate indirect firelines to minimize the amount of unburned fuels. Ensure communications between all firing operations. Establish road security at all firing sites. Follow approved firing plan for unburned fuels.	Moderate
Environmental Factors	Assess for known allergies and report to medical personnel. Obtain Bee/wasp spray and yellow jacket traps. Maintain an awareness of livestock and rattlesnakes.	Moderate
Fire Behavior	Be aware of burn windows and weather impacts and min/max RH for flashy fuels/local conditions. Report changes to FBAN and IMET.	Moderate
Communication	Evaluate for dead zones prior to engagement. Utilize human repeaters as needed. Ensure accountability of resources in problem areas. Be prepared if local traffic maximizes air time.	Moderate
Viral Transmission Mitigations, Communicable Disease	Maintain isolated ICP (remote briefings, etc), maintain social distancing, and wear face coverings in accordance with CDC recommendations. Report and isolate if not feeling well.	Low
Public Interaction	Place new road closures as necessary and maintain current closures. Provide signage on all perimeter roads warning of closures and fire activity. Request tribal police presence on SR155 access roads, Omak Lake and Columbia River Road as needed. Maintain awareness of evacuation areas and provide accurate information dissemination.	Low



# Division/Group Assignment List (ICS 204 WF)

Controlled Unclassified Information//Basic

<b>1. Incident Name:</b>			<b>3.</b>			
WHITMORE			<b>Branch:</b>		<b>Division/Group</b>	
<b>2. Operational Period:</b> DAY / NIGHT			<b>A/Z/W/P</b>			
Date/Time From: 08/13/2021 0600 FRI	Date/Time To: 08/14/2021 0600 SAT					
<b>4. Operations Personnel</b>						
<b>OPERATIONS CHIEF</b>		MATT CASTLE; KURT RANTA (T) JEFF BOUSCHOR; JEROMY WILSON (T)		<b>DIVISION/GROUP SUPERVISOR</b>		NIKIA HERNANDEZ*
<b>SAFETY OFFICER</b>		TROY CORN; JACK CATES DON WALLER (T)		<b>AIR ATTACK SUPERVISOR</b>		MIKE STOUT
<b>5. Resources Assigned this Period</b>						
Strike Team / Task Force / Resource Designator	LWD	Leader	Number Persons	Drop Off PT./Time	Pick Up PT./Time	
<b>6. Control Operations/Work Assignments:</b>						
TASK: Secure fire North and East of Columbia River Road, South of Omak Lake to Division break. Provide for Structure Protection on Columbia River Road, Kartar Valley and Omak Lake road. PURPOSE: Protect property and resources; limit further fire spread to the West. END STATE: Fire is contained south of Omak Lake and East of Columbia River road and structures are not threatened.						
<b>7. Special Instructions:</b>						
<ul style="list-style-type: none"><li>• Return all empty gas cans to supply!</li><li>• GPS all pump locations</li></ul> <p>*=Resource identified for initial attack</p>						
<b>8. Division/Group Communication Summary</b>						
Function	Channel	RX Frequency N/W	RX Tone/NAC	TX Frequency N/W	TX Tone/NAC	Mode
TACTICAL	1	168.0500	146.2	168.0500	146.2	A
COMMAND	7	173.9250	146.2	169.8375	146.2	A
COMMAND	8	159.4275	192.8	151.2725	192.8	A
COMMAND	9	169.7250	88.5	164.2500	100.0	A
AIR TO GROUND	14	171.8625		171.8625		A
<b>9. Prepared By (Resource Unit Leader)</b>			<b>Approved By (Planning Section Chief)</b>		<b>Date</b>	<b>Time</b>
NATHAN JEFFRIES			HOWARD JOHNSON		08/12/2021	2000

## Division/Group Assignment List (ICS 204 WF)

Controlled Unclassified Information//Basic

<b>1. Incident Name:</b>				<b>3.</b>		
WHITMORE				<b>Branch:</b>	<b>Division/Group</b>  <b>C</b>	
<b>2. Operational Period: DAY / NIGHT</b>						
Date/Time From: 08/13/2021 0600      FRI		Date/Time To: 08/14/2021 0600      SAT				
<b>4. Operations Personnel</b>						
<b>OPERATIONS CHIEF</b>		MATT CASTLE; KURT RANTA (T) JEFF BOUSCHOR; JEROMY WILSON (T)		<b>DIVISION/GROUP SUPERVISOR</b>		DANIEL OBERG
<b>SAFETY OFFICER</b>		TROY CORN; JACK CATES DON WALLER (T)		<b>AIR ATTACK SUPERVISOR</b>		MIKE STOUT
<b>5. Resources Assigned this Period</b>						
Strike Team / Task Force / Resource Designator		LWD	Leader	Number Persons	Drop Off PT./Time	Pick Up PT./Time
O-174 SOF2		08/23	PAUL BRNA	1	ICP/0600	ICP/1800
E-8.1 TFLD		08/22	LAFE SACKETT	1	ICP/0600	ICP/1800
O-185 FMOD SWEDBERG CONTRACTING		08/24	JAMES MCKIDDY	2	ICP/0600	ICP/1800
C-3 HC2I MOCC INTERAGENCY CREW #4		08/21	TIMOTHY PERREN	20	ICP/0600	ICP/1800
C-21 HC2 FRANCO REFORESTATION		08/26	ARTURO QUEVEDO	20		
E-7 ENG6 OREGON WOODS, INC.		08/19	BEN COOK	3	ICP/0600	ICP/1800
E-133 ENG6 BIA AZ-NAA E-3662		08/25	TONY WILLIAMS	3		
E-179 ENG3 WILDFIRE SUPPORT TEAM		08/25	JOEY DEMARTINO	3	ICP/0600	ICP/1800
E-205 ENG6 BIG STATE WILDFIRE		08/26	MATTHEW FINN IV	3		
E-18 WTS2 PORTABLE ROCK PRODUCTION		08/19	JIMMY POWELL	1	ICP/0600	ICP/1800
E-5001 WTS2 ELITE WATER WAGON		08/25	TYLER PEASLEY	1	ICP/0600	ICP/1800
E-5000 DOZ2 SCFD9*		08/20	MICHAEL WOLF	1	ICP/0600	ICP/1800
E-5 AMBU1 MED TRANSPORT (ALS)		08/21	JENNIFER BOSTWICK	2	ICP/0600	ICP/1800
O-37 EMPF MEDIC 2		08/21	JENNEL SMITH	1	ICP/0600	ICP/1800
O-175 EMT 2		08/18	KADY LUKOWICZ	1	ICP/0600	ICP/1800
<b>8. Division/Group Communication Summary</b>						
Function	Channel	RX Frequency N/W	RX Tone/NAC	TX Frequency N/W	TX Tone/NAC	Mode
TACTICAL	6	168.2500	146.2	168.2500	146.2	A
COMMAND	7	173.9250	146.2	169.8375	146.2	A
COMMAND	8	159.4275	192.8	151.2725	192.8	A
COMMAND	9	169.7250	88.5	164.2500	100.0	A
AIR TO GROUND	14	171.8625		171.8625		A
<b>9. Prepared By (Resource Unit Leader)</b>			<b>Approved By (Planning Section Chief)</b>		<b>Date</b>	<b>Time</b>
NATHAN JEFFRIES			HOWARD JOHNSON		08/12/2021	2000

## Division/Group Assignment List (ICS 204 WF)

Controlled Unclassified Information//Basic

<b>1. Incident Name:</b>			<b>3.</b>			
WHITMORE			<b>Branch:</b>		<b>Division/Group</b>  <b>C</b>	
<b>2. Operational Period: DAY / NIGHT</b>						
Date/Time From: 08/13/2021 0600      FRI		Date/Time To: 08/14/2021 0600      SAT				
<b>4. Operations Personnel</b>						
<b>OPERATIONS CHIEF</b>		MATT CASTLE; KURT RANTA (T) JEFF BOUSCHOR; JEROMY WILSON (T)		<b>DIVISION/GROUP SUPERVISOR</b>		DANIEL OBERG
<b>SAFETY OFFICER</b>		TROY CORN; JACK CATES DON WALLER (T)		<b>AIR ATTACK SUPERVISOR</b>		MIKE STOUT
<b>5. Resources Assigned this Period</b>						
Strike Team / Task Force / Resource Designator		LWD	Leader	Number Persons	Drop Off PT./Time	Pick Up PT./Time
<b>6. Control Operations/Work Assignments:</b>						
TASK - Mop up and secure completed fireline, scout and establish new firelines as necessary to keep fire East of Rattlesnake Creek and Peter Flat.						
PURPOSE - Protect property and resources; limit further fire spread to the West.						
END STATE - Fireline is established and secured and fire is contained East of Rattlesnake creek and Peter Flat.						
<b>7. Special Instructions:</b>						
<ul style="list-style-type: none"> <li>Return all empty gas cans to supply!</li> <li>GPS all pump locations</li> </ul> <p>*=Resource identified for initial attack</p>						
<b>8. Division/Group Communication Summary</b>						
Function	Channel	RX Frequency N/W	RX Tone/NAC	TX Frequency N/W	TX Tone/NAC	Mode
TACTICAL	6	168.2500	146.2	168.2500	146.2	A
COMMAND	7	173.9250	146.2	169.8375	146.2	A
COMMAND	8	159.4275	192.8	151.2725	192.8	A
COMMAND	9	169.7250	88.5	164.2500	100.0	A
AIR TO GROUND	14	171.8625		171.8625		A
<b>9. Prepared By (Resource Unit Leader)</b>			<b>Approved By (Planning Section Chief)</b>		<b>Date</b>	<b>Time</b>
NATHAN JEFFRIES			HOWARD JOHNSON		08/12/2021	2000

**Division/Group Assignment List (ICS 204 WF)**  
**Controlled Unclassified Information//Basic**

<b>1. Incident Name:</b>			<b>3.</b>			
WHITMORE			<b>Branch:</b>		<b>Division/Group</b>	
<b>2. Operational Period: DAY / NIGHT</b>					<b>F</b>	
Date/Time From: 08/13/2021 0600      FRI		Date/Time To: 08/14/2021 0600      SAT				
<b>4. Operations Personnel</b>						
<b>OPERATIONS CHIEF</b>		MATT CASTLE; KURT RANTA (T) JEFF BOUSCHOR; JEROMY WILSON (T)		<b>DIVISION/GROUP SUPERVISOR</b>		LARRY LEACH JAMES DICKINSON (T)
<b>SAFETY OFFICER</b>		TROY CORN; JACK CATES DON WALLER (T)		<b>AIR ATTACK SUPERVISOR</b>		MIKE STOUT
<b>5. Resources Assigned this Period</b>						
Strike Team / Task Force / Resource Designator		LWD	Leader	Number Persons	Drop Off PT./Time	Pick Up PT./Time
O-1.61 SOF2		08/21	JOSHUA NORTHRUP	1	ICP/0600	ICP/1800
O-118 TFLD		08/22	TROY MAGUIRE	1	ICP/0600	ICP/1800
O-12 HEQB		08/21	TRAVIS BRUCH	1	ICP/0600	ICP/1800
O-186 FMOD TOP NOTCH		08/24	KYLE ARMIJO	2	ICP/0600	ICP/1800
C-7 HC1 LA GRANDE IHC		08/19	JOSH DIACETIS	20	ICP/0600	ICP/1800
C-1 HC2 GRIZZLY FIREFIGHTERS INC*		08/21	KARLA BEJAR	20	ICP/0600	ICP/1800
E-8 ENG6 NM-EMP NPS		08/22	ELI PINO	6	ICP/0600	ICP/1800
E-193 ENG6 THUNDERBOLT FIRE SERVICE		08/18	TOBY YAZZIE	3	ICP/0600	ICP/1800
E-203 ENG4 JD FORESTRY		08/26	LUIS LOPEZ	3	ICP/0600	ICP/1800
E-206 ENG6 LATE SUMMERS*		08/24	BRADLEY BAKER	3	ICP/0600	ICP/1800
E-17 WTS2 FYR FLY LTD #68		08/19	LINN LAMB	1	ICP/0600	ICP/1800
E-19 WTS2 BOMBEROS WATER LLC		08/19	KURT FIGG-HOBLYN	1	ICP/0600	ICP/1800
E-187 WTS2 OWENS		08/19	FRANKLIN OWENS	1	ICP/0600	ICP/1800
E-2 DOZ2 SILVER-NICKEL LOGGING LLC		08/19	TOBY EPPERSON	2	ICP/0600	ICP/1800
E-20 DOZ2 BLM		08/22	BLAINE JEWETT	1	ICP/0600	ICP/1800
<b>8. Division/Group Communication Summary</b>						
Function	Channel	RX Frequency N/W	RX Tone/NAC	TX Frequency N/W	TX Tone/NAC	Mode
TACTICAL	2	168.2000	146.2	168.2000	146.2	A
COMMAND	7	173.9250	146.2	169.8375	146.2	A
COMMAND	8	159.4275	192.8	151.2725	192.8	A
COMMAND	9	169.7250	88.5	164.2500	100.0	A
AIR TO GROUND	14	171.8625		171.8625		A
<b>9. Prepared By (Resource Unit Leader)</b>			<b>Approved By (Planning Section Chief)</b>		<b>Date</b>	<b>Time</b>
NATHAN JEFFRIES			HOWARD JOHNSON		08/12/2021	2000

**Division/Group Assignment List (ICS 204 WF)**  
**Controlled Unclassified Information//Basic**

<b>1. Incident Name:</b>			<b>3.</b>			
WHITMORE			<b>Branch:</b>		<b>Division/Group</b>	
<b>2. Operational Period: DAY / NIGHT</b>					<b>F</b>	
Date/Time From: 08/13/2021 0600 FRI		Date/Time To: 08/14/2021 0600 SAT				
<b>4. Operations Personnel</b>						
<b>OPERATIONS CHIEF</b>		MATT CASTLE; KURT RANTA (T) JEFF BOUSCHOR; JEROMY WILSON (T)		<b>DIVISION/GROUP SUPERVISOR</b>		LARRY LEACH JAMES DICKINSON (T)
<b>SAFETY OFFICER</b>		TROY CORN; JACK CATES DON WALLER (T)		<b>AIR ATTACK SUPERVISOR</b>		MIKE STOUT
<b>5. Resources Assigned this Period</b>						
Strike Team / Task Force / Resource Designator		LWD	Leader	Number Persons	Drop Off PT./Time	Pick Up PT./Time
E-112 UTV TOP GUN RESOURCES			-- UNSTAFFED --		ICP/0600	ICP/1800
E-113 UTV TOP GUN RESOURCES			-- UNSTAFFED --		ICP/0600	ICP/1800
O-43 REMS 9 SPOKANE COUNTY FD9		08/19	CLINT JUNTUNEN	4	ICP/0600	ICP/1800
<b>6. Control Operations/Work Assignments:</b>						
<p>TASK - Contain fire south of Camp Progress, east of Road 103 and south of Road 1016.          PURPOSE - Protect property and resources; limit further fire spread to the North and West.          END STATE - Fireline is established and secured and fire is contained East of Peter Flat and Dan Nason Basin.</p>						
<b>7. Special Instructions:</b>						
<ul style="list-style-type: none"> <li>Return all empty gas cans to supply!</li> <li>GPS all pump locations</li> </ul> <p>*=Resource identified for initial attack</p>						
<b>8. Division/Group Communication Summary</b>						
Function	Channel	RX Frequency N/W	RX Tone/NAC	TX Frequency N/W	TX Tone/NAC	Mode
TACTICAL	2	168.2000	146.2	168.2000	146.2	A
COMMAND	7	173.9250	146.2	169.8375	146.2	A
COMMAND	8	159.4275	192.8	151.2725	192.8	A
COMMAND	9	169.7250	88.5	164.2500	100.0	A
AIR TO GROUND	14	171.8625		171.8625		A
<b>9. Prepared By (Resource Unit Leader)</b>			<b>Approved By (Planning Section Chief)</b>		<b>Date</b>	<b>Time</b>
NATHAN JEFFRIES			HOWARD JOHNSON		08/12/2021	2000

**Division/Group Assignment List (ICS 204 WF)**  
**Controlled Unclassified Information//Basic**

<b>1. Incident Name:</b>			<b>3.</b>			
WHITMORE			<b>Branch:</b>		<b>Division/Group</b>	
<b>2. Operational Period: DAY / NIGHT</b>					L	
Date/Time From: 08/13/2021 0600 FRI		Date/Time To: 08/14/2021 0600 SAT				
<b>4. Operations Personnel</b>						
<b>OPERATIONS CHIEF</b>		MATT CASTLE; KURT RANTA (T) JEFF BOUSCHOR; JEROMY WILSON (T)		<b>DIVISION/GROUP SUPERVISOR</b>		BOB HINDS
<b>SAFETY OFFICER</b>		TROY CORN; JACK CATES DON WALLER (T)		<b>AIR ATTACK SUPERVISOR</b>		MIKE STOUT
<b>5. Resources Assigned this Period</b>						
Strike Team / Task Force / Resource Designator		LWD	Leader	Number Persons	Drop Off PT./Time	Pick Up PT./Time
O-1.63 SOF2		08/19	JOHN BARNES	1	ICP/0600	ICP/1800
O-109 TFLD		08/23	IZAACK MCHENRY	1	ICP/0600	ICP/1800
O-84 HEQB		08/22	REESE SEWELL	1	ICP/0600	ICP/1800
O-135 HEQB		08/24	JOSHUA PERKINS	1	ICP/0600	ICP/1800
O-182 HEQB (T)		08/24	RICHARD ROCHA	1	ICP/0600	ICP/1800
O-239 FMOD SWEDBERG MODULE 3		08/25	JEFALD WULFF	2	ICP/0600	ICP/1800
C-9 HC2I FLAGSTAFF IHC		08/21	MARK ADAMS	22	ICP/0600	ICP/1800
C-2 HC2 PACIFIC COAST CONTRACTING		08/13	NORBERTO PANTELEON	20	ICP/0600	ICP/1800
C-13 HC2 OC FORESTRY INC		08/21	COLIN VALENNTAN	20	ICP/0600	ICP/1800
E-83 ENG6 TIMBERMANS TREE SERVICES		08/22	MARCUS ENICK	3	ICP/0600	ICP/1800
E-85 ENG6 OC FORESTRY		08/21	AARON ABEL	3	ICP/0600	ICP/1800
E-102 ENG3 ELEPHANT AHEAD VOL FD		08/18	CHRIS ANTAIS	4	ICP/0600	ICP/1800
E-103 ENG6 GE FORESTRY INC*		08/22	ALVARO GONZALEZ	3	ICP/0600	ICP/1800
E-174 ENG6 MARYLAND FS TYPE 6		08/14	SERGIO CASTILLO	4	ICP/0600	ICP/1800
E-209 ENG6 JNJ CONTRACTING		08/26	TRAVIS GRUNENFELDER	3	ICP/0600	ICP/1800
E-76 WTS2 LEVI PICARD		08/21	LEVI PICARD/DENNY	3	ICP/0600	ICP/1800
<b>8. Division/Group Communication Summary</b>						
Function	Channel	RX Frequency N/W	RX Tone/NAC	TX Frequency N/W	TX Tone/NAC	Mode
TACTICAL	3	168.6000	146.2	168.6000	146.2	A
COMMAND	7	173.9250	146.2	169.8375	146.2	A
COMMAND	8	159.4275	192.8	151.2725	192.8	A
COMMAND	9	169.7250	88.5	164.2500	100.0	A
AIR TO GROUND	14	171.8625		171.8625		A
<b>9. Prepared By (Resource Unit Leader)</b>			<b>Approved By (Planning Section Chief)</b>		<b>Date</b>	<b>Time</b>
NATHAN JEFFRIES			HOWARD JOHNSON		08/12/2021	2000

**Division/Group Assignment List (ICS 204 WF)**  
**Controlled Unclassified Information//Basic**

<b>1. Incident Name:</b>				<b>3.</b>		
WHITMORE				<b>Branch:</b>	<b>Division/Group</b>  <b>L</b>	
<b>2. Operational Period: DAY / NIGHT</b>						
Date/Time From: 08/13/2021 0600 FRI		Date/Time To: 08/14/2021 0600 SAT				
<b>4. Operations Personnel</b>						
<b>OPERATIONS CHIEF</b>		MATT CASTLE; KURT RANTA (T) JEFF BOUSCHOR; JEROMY WILSON (T)		<b>DIVISION/GROUP SUPERVISOR</b>		BOB HINDS
<b>SAFETY OFFICER</b>		TROY CORN; JACK CATES DON WALLER (T)		<b>AIR ATTACK SUPERVISOR</b>		MIKE STOUT
<b>5. Resources Assigned this Period</b>						
Strike Team / Task Force / Resource Designator	LWD	Leader	Number Persons	Drop Off PT./Time	Pick Up PT./Time	
E-78 WTS2 COWBOY FIRE LLC	08/21	GREGORY WITSMAN	1	ICP/0600	ICP/1800	
E-79 WTS2 SUGDEN FIRE	08/22	THOMAS SUGDEN	1	ICP/0600	ICP/1800	
E-186 WTS2 BOULDER CREEK	08/25	PETE DELANGE	1	ICP/0600	ICP/1800	
E-1 DOZ2 OWENS FREIGHT LINES	08/19	JEREMY ANNEN	2	ICP/0600	ICP/1800	
E-96 DOZ4 OWENS FREIGHT	08/22	RON ANDERSON	2	ICP/0600	ICP/1800	
E-184 DOZ3 TUNK CREEK	08/23	CLARENCE FINLEY	2	ICP/0600	ICP/1800	
E-198 DOZ2 IRON TRIANGLE	08/22	RALPH LAMBETH	1	ICP/0600	ICP/1800	
E-130 SKG3 TUNK CREEK LLC	08/22	DYLAN GREEN	2	ICP/0600	ICP/1800	
E-175 UTV TOP GUN RESOURCES		-- UNSTAFFED --		ICP/0600	ICP/1800	
E-176 UTV TOP GUN RESOURCES UTV		-- UNSTAFFED --		ICP/0600	ICP/1800	
E-177 UTV TOP GUN RESOURCES UTV		-- UNSTAFFED --		ICP/0600	ICP/1800	
E-67 AMBU2 LINCOLN COUNTY (BLS)	08/21	CORREY KRAUS	2	ICP/0600	ICP/1800	
E-5002 AMBU3 MED TRANSPORT (ALS NON FIRELINE)	08/25	SHANNON STOSAK	1	ICP/0600	ICP/1800	
O-62 EMPF MEDIC 1	08/20	JOHN LIPSKER	1	ICP/0600	ICP/1800	
<b>8. Division/Group Communication Summary</b>						
Function	Channel	RX Frequency N/W	RX Tone/NAC	TX Frequency N/W	TX Tone/NAC	Mode
TACTICAL	3	168.6000	146.2	168.6000	146.2	A
COMMAND	7	173.9250	146.2	169.8375	146.2	A
COMMAND	8	159.4275	192.8	151.2725	192.8	A
COMMAND	9	169.7250	88.5	164.2500	100.0	A
AIR TO GROUND	14	171.8625		171.8625		A
<b>9. Prepared By (Resource Unit Leader)</b>			<b>Approved By (Planning Section Chief)</b>		<b>Date</b>	<b>Time</b>
NATHAN JEFFRIES			HOWARD JOHNSON		08/12/2021	2000

## Division/Group Assignment List (ICS 204 WF)

Controlled Unclassified Information//Basic

<b>1. Incident Name:</b>			<b>3.</b>			
WHITMORE			<b>Branch:</b>		<b>Division/Group</b>	
<b>2. Operational Period: DAY / NIGHT</b>						
Date/Time From: 08/13/2021 0600      FRI		Date/Time To: 08/14/2021 0600      SAT		<b>L</b>		
<b>4. Operations Personnel</b>						
<b>OPERATIONS CHIEF</b>		MATT CASTLE; KURT RANTA (T) JEFF BOUSCHOR; JEROMY WILSON (T)		<b>DIVISION/GROUP SUPERVISOR</b>		BOB HINDS
<b>SAFETY OFFICER</b>		TROY CORN; JACK CATES DON WALLER (T)		<b>AIR ATTACK SUPERVISOR</b>		MIKE STOUT
<b>5. Resources Assigned this Period</b>						
Strike Team / Task Force / Resource Designator		LWD	Leader	Number Persons	Drop Off PT./Time	Pick Up PT./Time
<b>6. Control Operations/Work Assignments:</b>						
<p>TASK - Contain and secure fire perimeter west of Coyote Creek Road and south of Rd 1016. Burn out as needed.          PURPOSE - Protect property and resources; limit further fire spread to the North.          END STATE - Fireline is established and secured and fire is contained south of Highway 155.</p>						
<b>7. Special Instructions:</b>						
<ul style="list-style-type: none"> <li>Return all empty gas cans to supply!</li> <li>GPS all pump locations</li> </ul> <p>*=Resource identified for initial attack</p>						
<b>8. Division/Group Communication Summary</b>						
Function	Channel	RX Frequency N/W	RX Tone/NAC	TX Frequency N/W	TX Tone/NAC	Mode
TACTICAL	3	168.6000	146.2	168.6000	146.2	A
COMMAND	7	173.9250	146.2	169.8375	146.2	A
COMMAND	8	159.4275	192.8	151.2725	192.8	A
COMMAND	9	169.7250	88.5	164.2500	100.0	A
AIR TO GROUND	14	171.8625		171.8625		A
<b>9. Prepared By (Resource Unit Leader)</b>			<b>Approved By (Planning Section Chief)</b>		<b>Date</b>	<b>Time</b>
NATHAN JEFFRIES			HOWARD JOHNSON		08/12/2021	2000



**Division/Group Assignment List (ICS 204 WF)**  
**Controlled Unclassified Information//Basic**

<b>1. Incident Name:</b>			<b>3.</b>			
WHITMORE			<b>Branch:</b>		<b>Division/Group</b>	
<b>2. Operational Period: DAY / NIGHT</b>					<b>M</b>	
Date/Time From: 08/13/2021 0600 FRI		Date/Time To: 08/14/2021 0600 SAT				
<b>4. Operations Personnel</b>						
<b>OPERATIONS CHIEF</b>		MATT CASTLE; KURT RANTA (T) JEFF BOUSCHOR; JEROMY WILSON (T)		<b>DIVISION/GROUP SUPERVISOR</b>		MIKE JACKSON SAM STEINSHOUER (T)
<b>SAFETY OFFICER</b>		TROY CORN; JACK CATES DON WALLER (T)		<b>AIR ATTACK SUPERVISOR</b>		MIKE STOUT
<b>5. Resources Assigned this Period</b>						
Strike Team / Task Force / Resource Designator		LWD	Leader	Number Persons	Drop Off PT./Time	Pick Up PT./Time
O-1.63 SOF2		08/19	JOHN BARNES	1	ICP/0600	ICP/1800
E-11 ENG6 CONNECTICUT FIRE GROUP*		08/25	RICHARD SCALORA	4	ICP/0600	ICP/1800
E-192 ENG6 MID-COLUMBIA RESOURCES LLC		08/17	DAVID JOHNSON	3	ICP/0600	ICP/1800
E-197 ENG6 CHAFFEE CO FPD		08/22	BRIAN WELCH	3	ICP/0600	ICP/1800
E-185 WTS2 IA CONSTRUCTION & FIRE		08/13	TERRY BURR	1	ICP/0600	ICP/1800
O-36 EMPF MEDIC 3		08/21	JUSTIN SMITH	1	ICP/0600	ICP/1800
<b>6. Control Operations/Work Assignments:</b>						
<p>TASK - Secure fire line, mop up as needed.          PURPOSE - Protect property and natural resources east of Lower Coyote Creek Road.          END STATE - Fire is contained south of Coyote Creek Road. Structures south of the fire area are not threatened.</p>						
<b>7. Special Instructions:</b>						
<ul style="list-style-type: none"> <li>Return all empty gas cans to supply!</li> <li>GPS all pump locations</li> </ul> <p>*=Resource identified for initial attack</p>						
<b>8. Division/Group Communication Summary</b>						
Function	Channel	RX Frequency N/W	RX Tone/NAC	TX Frequency N/W	TX Tone/NAC	Mode
TACTICAL	4	166.7250	146.2	166.7250	146.2	A
COMMAND	7	173.9250	146.2	169.8375	146.2	A
COMMAND	8	159.4275	192.8	151.2725	192.8	A
COMMAND	9	169.7250	88.5	164.2500	100.0	A
AIR TO GROUND	14	171.8625		171.8625		A
<b>9. Prepared By (Resource Unit Leader)</b>			<b>Approved By (Planning Section Chief)</b>		<b>Date</b>	<b>Time</b>
NATHAN JEFFRIES			HOWARD JOHNSON		08/12/2021	2000

# Division/Group Assignment List (ICS 204 WF)

Controlled Unclassified Information//Basic

<b>1. Incident Name:</b>				<b>3.</b>		
WHITMORE				<b>Branch:</b>	<b>Division/Group</b>	
<b>2. Operational Period: DAY / NIGHT</b>						
Date/Time From: 08/13/2021 0600      FRI		Date/Time To: 08/14/2021 0600      SAT		<b>STRUCTURE / CONTINGENCY</b>		
<b>4. Operations Personnel</b>						
<b>OPERATIONS CHIEF</b>		MATT CASTLE; KURT RANTA (T) JEFF BOUSCHOR; JEROMY WILSON (T)		<b>DIVISION/GROUP SUPERVISOR</b>		BRANDYN HARVEY
<b>SAFETY OFFICER</b>		TROY CORN; JACK CATES DON WALLER (T)		<b>AIR ATTACK SUPERVISOR</b>		MIKE STOUT
<b>5. Resources Assigned this Period</b>						
Strike Team / Task Force / Resource Designator	LWD	Leader	Number Persons	Drop Off PT./Time	Pick Up PT./Time	
<b>6. Control Operations/Work Assignments:</b>						
<p>TASK - Prepare structure protection plan for structures on the Highway 155 corridor. Scout and identify contingency line locations</p> <p>PURPOSE - Identify structures, resources needed and strategic plan for structure protection and contingency lines.</p> <p>END STATE - Plan is developed to protect structures in the Highway 155 corridor and contingency lines are identified and completed as necessary.</p>						
<b>7. Special Instructions:</b>						
<b>8. Division/Group Communication Summary</b>						
Function	Channel	RX Frequency N/W	RX Tone/NAC	TX Frequency N/W	TX Tone/NAC	Mode
COMMAND	7	173.9250	146.2	169.8375	146.2	A
COMMAND	8	159.4275	192.8	151.2725	192.8	A
COMMAND	9	169.7250	88.5	164.2500	100.0	A
TACTICAL	11	153.8300		153.8300		A
AIR TO GROUND	14	171.8625		171.8625		A
<b>9. Prepared By (Resource Unit Leader)</b>			<b>Approved By (Planning Section Chief)</b>		<b>Date</b>	<b>Time</b>
NATHAN JEFFRIES			HOWARD JOHNSON		08/12/2021	2000

**Division/Group Assignment List (ICS 204 WF)**  
**Controlled Unclassified Information//Basic**

<b>1. Incident Name:</b>			<b>3.</b>			
WHITMORE			<b>Branch:</b>		<b>Division/Group</b>	
<b>2. Operational Period: DAY / NIGHT</b>					<b>NIGHT</b>	
Date/Time From: 08/13/2021 0600 FRI		Date/Time To: 08/14/2021 0600 SAT				
<b>4. Operations Personnel</b>						
<b>OPERATIONS CHIEF</b>		MATT CASTLE; KURT RANTA (T) JEFF BOUSCHOR; JEROMY WILSON (T)		<b>DIVISION/GROUP SUPERVISOR</b>		NICK SCHREINER
<b>SAFETY OFFICER</b>		TROY CORN; JACK CATES DON WALLER (T)		<b>AIR ATTACK SUPERVISOR</b>		MIKE STOUT
<b>5. Resources Assigned this Period</b>						
Strike Team / Task Force / Resource Designator		LWD	Leader	Number Persons	Drop Off PT./Time	Pick Up PT./Time
O-76 SOF2		08/19	RICHARD MCCONNELL	1	ICP/1800	ICP/0600
O-116 TFLD		08/25	ALEX NAGYGYOR	1	ICP/1800	ICP/0600
O-218 HEQB		08/25	TYLER TRAWEEK	1	ICP/1800	ICP/0600
C-15 HC1 FORT APACHE IHC		08/25	BRIAN QUINTERO	21	ICP/1800	ICP/0600
E-92 ENG6 JD FORESTRY REGION 6 NWCC		08/22	FELIX DROESCH	3	ICP/1800	ICP/0600
E-93 ENG6 ROCKY POINT WILDFIRE		08/22	KC FRY	3	ICP/1800	ICP/0600
E-104 ENG6 JC OROZCO		08/23	JAVIER OROZCO	3	ICP/1800	ICP/0600
E-105 ENG6 NW FIRE PROTECTION DIST		08/22	JAMES ESTLE	3	ICP/1800	ICP/0600
E-221 WTS2 SUNDANCE 204 (R&R - BACK 8/15)		08/28	RODNEY FAY	1	ICP/1800	ICP/0600
E-169 DOZ4 BOULDER CREEK		08/24	TED HUNTER	2	ICP/1800	ICP/0600
O-176 EMT 1		08/16	REBECCA WELLMAN	1	ICP/1800	ICP/0600
<b>6. Control Operations/Work Assignments:</b>						
TASK - Patrol and secure firelines in Divisions C/L/F/M. Patrol and secure structures as needed. Reduce risk to property. PURPOSE - Prevent additional fire spread to the north towards Highway 155. Protect property and resources, Prevent further damage and loss to structures. END STATE - Fire is contained within existing line locations and no longer a threat to structures.						
<b>7. Special Instructions:</b>						
Be prepared to respond to IA as requested thru communications and as availability allows.						
<b>8. Division/Group Communication Summary</b>						
Function	Channel	RX Frequency N/W	RX Tone/NAC	TX Frequency N/W	TX Tone/NAC	Mode
TACTICAL	5	166.7750	146.2	166.7750	146.2	A
COMMAND	7	173.9250	146.2	169.8375	146.2	A
COMMAND	8	159.4275	192.8	151.2725	192.8	A
COMMAND	9	169.7250	88.5	164.2500	100.0	A
AIR TO GROUND	14	171.8625		171.8625		A
<b>9. Prepared By (Resource Unit Leader)</b>			<b>Approved By (Planning Section Chief)</b>		<b>Date</b>	<b>Time</b>
NATHAN JEFFRIES			HOWARD JOHNSON		08/12/2021	2000

# AIR OPERATIONS SUMMARY

PREPARED BY: Paul Balfour

PREPARED DATE/TIME: August 12, 2021 1800hrs

<b>INCIDENT NAME:</b>  <h2 style="text-align: center;">WHITMORE</h2>	<b>2. OPERATIONAL PERIOD:</b> Date: 8/13/2021      Helibase Start Time: 0830 End Time: 2030      Sunrise: 0545 Sunset: 2015 (Times valid for Nespelem)
--	--

<b>3. REMARKS (Safety Notes, Hazards, Air Operations Special Equipment, etc.):</b> General Aviation, See & Avoid Bucket work, Retardant drops: ensure area is clear of ground personnel before dropping; watch for wires; be aware of potential for turbulence at ridge tops, saddles, canyons, etc *** BE AWARE OF FATIGUE, TAKE LONGER BREAKS WHEN FLYING IN SMOKEY CONDITIONS. *** Report all TFR intrusions to Air Operations, Air Support or Helibase as soon as possible.	<b>4. MEDEVAC A/C:</b> Contact Mt Tolman Fire Center 509-634-3100 N125CL Short Haul PSICC 425-783-6150	<b>5. TFR #1/3986</b> Up to and including 9500msl 124.225 (A5)
---	--	---

PERSONNEL	Phone	7. FREQUENCIES	AM	FM	8. FIXED-WING	# Avail / Type/ Make-Model / FAA N# / Base(s)
AOBD: Paul Balfour O-1.40	509-993-8739	AIR/AIR Primary (A5)	124.225		Fixed Wing/Buckets	DIVS order thru ATGS if up, or Whitmore Communications
ASGS: Tim Lyda O-1.41	206-473-8560	AIR/AIR Secondary (A16)	134.050			
HEBM:		AIR/GROUND Primary (A-17)		171.8625	ATGS Aircraft	AA Mike Stout O-47 Kodiak N420Q (A20)  LATs Order through Air Attack/AOBD Mt Tolman Dispatch
HEMG: Thomas Clay(A87)	208-630-4475	AIR/GROUND Secondary		156.0225 T-103.5		
HEMG: Randy Pyle (A34.4)	503-705-2734	Air Keller Flt Flw		Rx172.775 T-156.7		
ATGS: Mike Stout O-47	208-304-4237			Tx166.325 T-123.0	Unmanned Rotor 31	Drone Group, Mgr Greg Suszek 239-877-9545
Mt Tolman:	509-634-3100	Air/Grnd 03 IA		166.6125	NOTES:	Whitmore Helibase: N48 08 75 Elevation 1769 W118 59 00
Debbie Coudell	509-570-4133	A/G DNR IA		159.270 T-103.5		DECK: 163.100
Michelle	509-675-0675					email costs to timlyda22@gmail.com

## 9. HELICOPTERS

FAA N#	TY	MAKE/MODEL	BASE	START	AVAIL	REMARKS	FAA N#	TY	MAKE/MODEL	BASE	START	AVAIL	REMARKS
N47CU	1	Boeing CH47 (A87)	Omak	0800	0900	Thomas Clay Mgr	N448JS	1	Sikorsky S61	Helibase	0800	0900	Randy Pyle Mgr

# INCIDENT RADIO COMMUNICATIONS PLAN (ICS 205)

Controlled Unclassified Information//Basic

<b>1. Incident Name:</b>	<b>2. Date/Time Prepared:</b>	<b>3. Operational Period: DAY / NIGHT</b>	
WHITMORE	Date: 08/12/2021 Time: 2000	Date/Time From: 08/13/2021 0600 FRI	Date/Time To: 08/14/2021 0600 SAT

**4. Basic Radio Channel Use:**

Zone Group	Ch #	Function	Channel Name/Trunked Radio System Talkgroup	Assignment	RX Freq	RX Tone/NAC	TX Freq	TX Tone/NAC	Mode (A,D, or M)	Remarks
	1	TACTICAL	TAC 1	DIV A / Z / W / P	168.0500	146.2	168.0500	146.2	A	
	2	TACTICAL	TAC 2	DIV F	168.2000	146.2	168.2000	146.2	A	
	3	TACTICAL	TAC 3	DIV L	168.6000	146.2	168.6000	146.2	A	
	4	TACTICAL	TAC 4	DIV M	166.7250	146.2	166.7250	146.2	A	
	5	TACTICAL	TAC 5	NIGHT	166.7750	146.2	166.7750	146.2	A	
	6	TACTICAL	TAC 6	DIV C	168.2500	146.2	168.2500	146.2	A	
	7	COMMAND	CMD 7	EAST OF FIRE	173.9250	146.2	169.8375	146.2	A	ARMSTRONG LO-LINKED TO CMD8
	8	COMMAND	CMD 8	NORTH OF FIRE	159.4275	192.8	151.2725	192.8	A	RIDGELINE N OF FIRE-LINKED TO CMD7
	9	COMMAND	CMD 9	ALL DIVS - BACKUP CMD	169.7250	88.5	164.2500	100.0	A	FIRE A-MOSES MTN
	10	COMMAND	MOSES	IA	169.7125	136.5	164.1625	100.0	A	FIRE B-MOSES MTN-IA ONLY
	11	TACTICAL	WA REDNET	STRUCTURE/CONTINGENCY	153.8300		153.8300		A	IA ONLY
	12	TACTICAL	C TAC	IA	166.9750	151.4	166.9750	151.4	A	IA ONLY
	13	AIR TO GROUND	ATG 03	IA	166.6125		166.6125		A	IA ONLY
	14	AIR TO GROUND	A/G PRI	PRIMARY	171.8625		171.8625		A	AIR TO GROUND PRIMARY
	15	AIR TO GROUND	A/G SEC	SECONDARY	156.0225	103.5	156.0225	103.5	A	LOW POWER ONLY
	16	AIR GUARD	AIRGUARD	AIRGUARD	168.6250		168.6250	110.9	A	EMERGENCY AIR ONLY

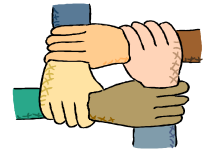
**5. Special Instructions:**

<b>6. Prepared By</b> (Communications Unit Leader)	Name: MISSY PARKER	Signature: <i>Missy Parker</i>
ICS 205	IAP Page	Date/Time: 08/12/2021 2000

Controlled Unclassified Information//Basic



# Human Resource Message



**Whitmore Fire - August 13, 2021 – 0600-0600**

## Lessons Learned = Experience:

We have been out on fire assignment for a long time, and this is only the second week of August. We are all getting tired and perhaps making more mistakes or forgetting things we normally do not. Give yourself grace and give others grace. We are all here together so be respectful and help each other out.

We all make mistakes, and we learn from those mistakes...better known as experience. We have a lot of “experienced” people working here and the “experience” is appreciated. We usually don’t make the same mistake twice.

Don’t be too hard on yourself. There are plenty of people willing to do that for you. Be proud of everything you do. Even mistakes mean you are trying. Per author Cheryl Strayed, “Trust your gut, forgive yourself, be grateful.”



**Quote for the day: “Good judgment comes from experience, and experience comes from bad judgement.” - Rita Mae Brown**

## **FOOD DONATION INFORMATION:**

- Food Donation boxes are placed in the Division Break Out area. Overhead Team, donation boxes are placed in yurts/offices. Facilities will pick up the donations daily and Mr. Em will deliver the donated food items to the Center.
- Thank you Facilities, Mr. Em, and everyone donating. The community appreciates all donations.

**Take care today, stay cool, rest, hydrate, and have a safe day!**



Contact: Susie Manezes, HRSP at 602-571-9327 or [smanezes@blm.gov](mailto:smanezes@blm.gov)

## A Message from Public Information

**PHOTOS:** Your fireline photos help us build understanding with the public. Community members want to see what you see because you go where others can't safely go. We are looking for any pictures of the fireline and **fire resources working on the fireline in their PPE.**

You can send photos to:

Email: [2021.whitmore@firenet.gov](mailto:2021.whitmore@firenet.gov)

Facebook messenger: Central Washington Fire Information Page or  
<https://www.facebook.com/cwafireinfo>

As always, make sure you're wearing all your PPE and conveying a professional, caring, and respectful attitude toward the homes and land in this community.

Thanks for helping us out!

---

Lastly, it's our job to talk to the public, but we want you to know the public is talking to you too.

### Comments from Facebook this week:

*"Be careful out there and try to stay cool."*

*"All of you be safe out there on the fires today. My prayers are with you all."*

*"My heartfelt thanks to each and everyone of you... be safe."*

*"Thank you for ALL your hard work!!!"*

...and countless more *"Thank you all"*, *"Thank you for your help"*, and *"THANK YOU!!!!!"* comments

# Logistics Message

## Whitmore Fire

### Supply Hours

Cache 0530 to 2200

Ordering 0600 to 2200

### Ground Support

0600 to 2200

### Kitchen Hours

Breakfast 0500 to 0900

Dinner 1700 to 2200

Lunch and Ice Refer 0500-0800, 1100-1300, 1700-1800

### Shower Trailer Hours

0500-1200

1200-1400 Closed for Cleaning

1400-2200





## Whitmore Fire Finance

FSC2 – Cheri Fuller, FSC2 (T) Christina Goebel

*Personnel Time – Carol Long or Frances Tobia*

*Equipment Time & VIPR – Mark Bohnet or Todd Powell*

Email : [2021.whitmore.finance@firenet.gov](mailto:2021.whitmore.finance@firenet.gov)

Phone: 509-634-2013

Hours of operation 0530 – 2200

*There is a box located outside of the ICP where CTRs and Shift Tickets can be left. Our ICPI Rob will be over at briefing area to turn in CTR/ST. If you have questions and need to talk to anyone in finance, please call the number above. You can also email.*

### **Resources that need to contact finance**

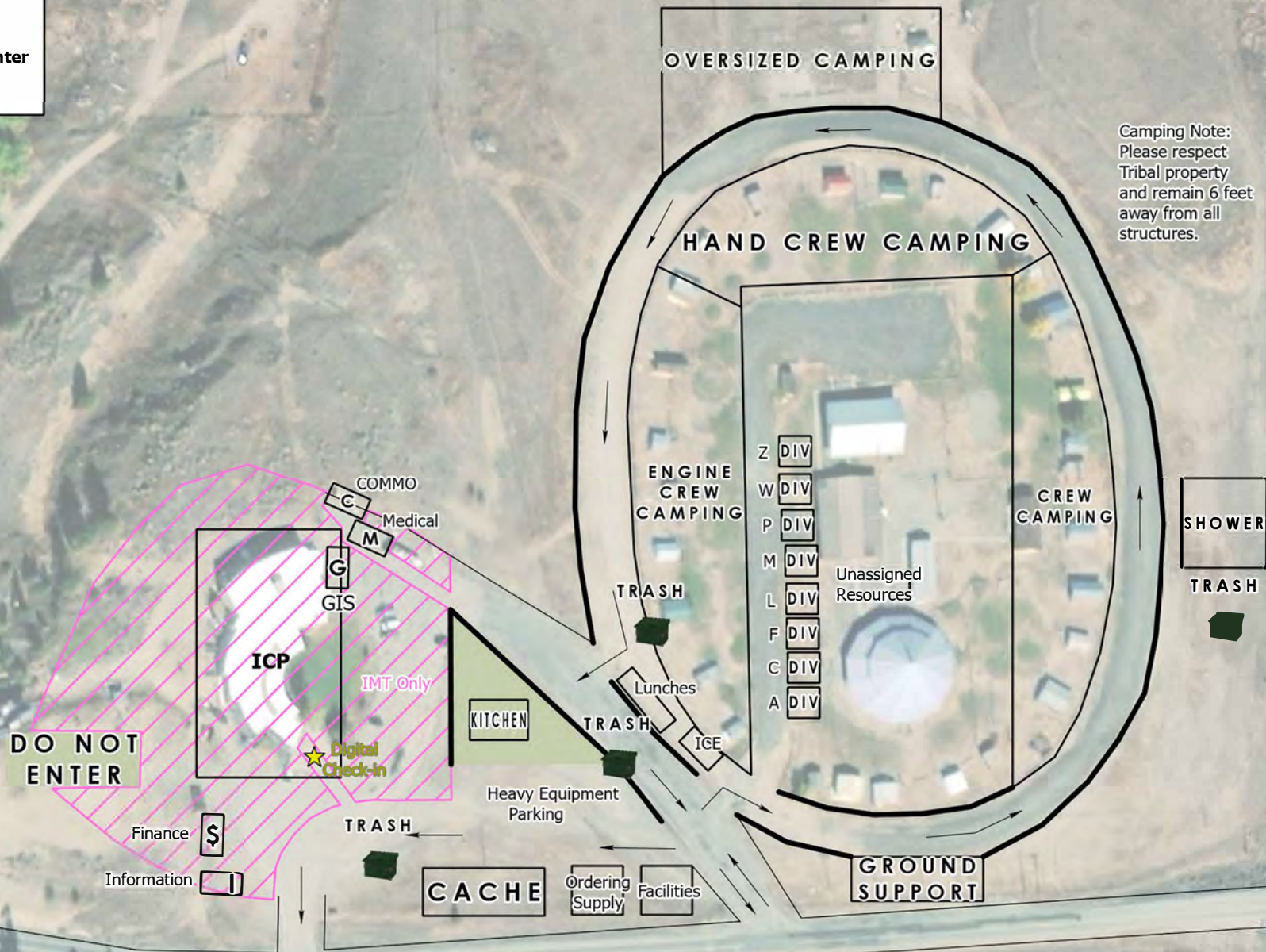
E-96  
E-174  
E-172

**Whitmore  
WA-COA-200106**

**Camp Map  
Nespelem Community Center**



Camping Note:  
Please respect  
Tribal property  
and remain 6 feet  
away from all  
structures.



S. Bushnell  
07 20 21  
Maxar, 2047 Hours

## Incident Maps

For incident maps scan the QR code on the cover of the IAP to open the 'Current Maps' folder.

### How to Download Maps in Avenza

If you're cell signal is poor you may need to connect to a wifi to download maps. However sometimes being connected to a wifi can slow map downloads. You'll just have to find out what works best.

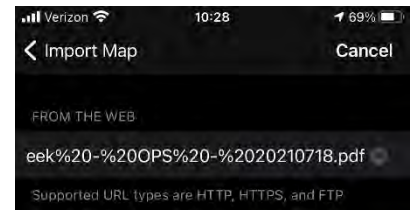
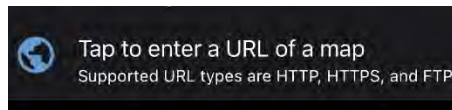
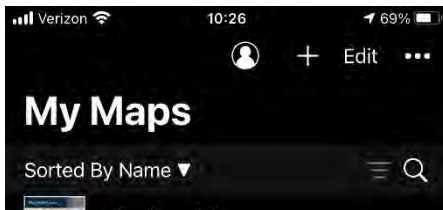
Method 1: From a browser - If you have a good cell or wifi signal

1. Tap on the desired map link and wait for the preview. *If it fails to load, use method 2 instead*
2. Tap the 'send to' icon (square with up arrow)
3. Choose the Avenza app



Method 2: From Avenza direct – if you don't have a good cell or wifi signal

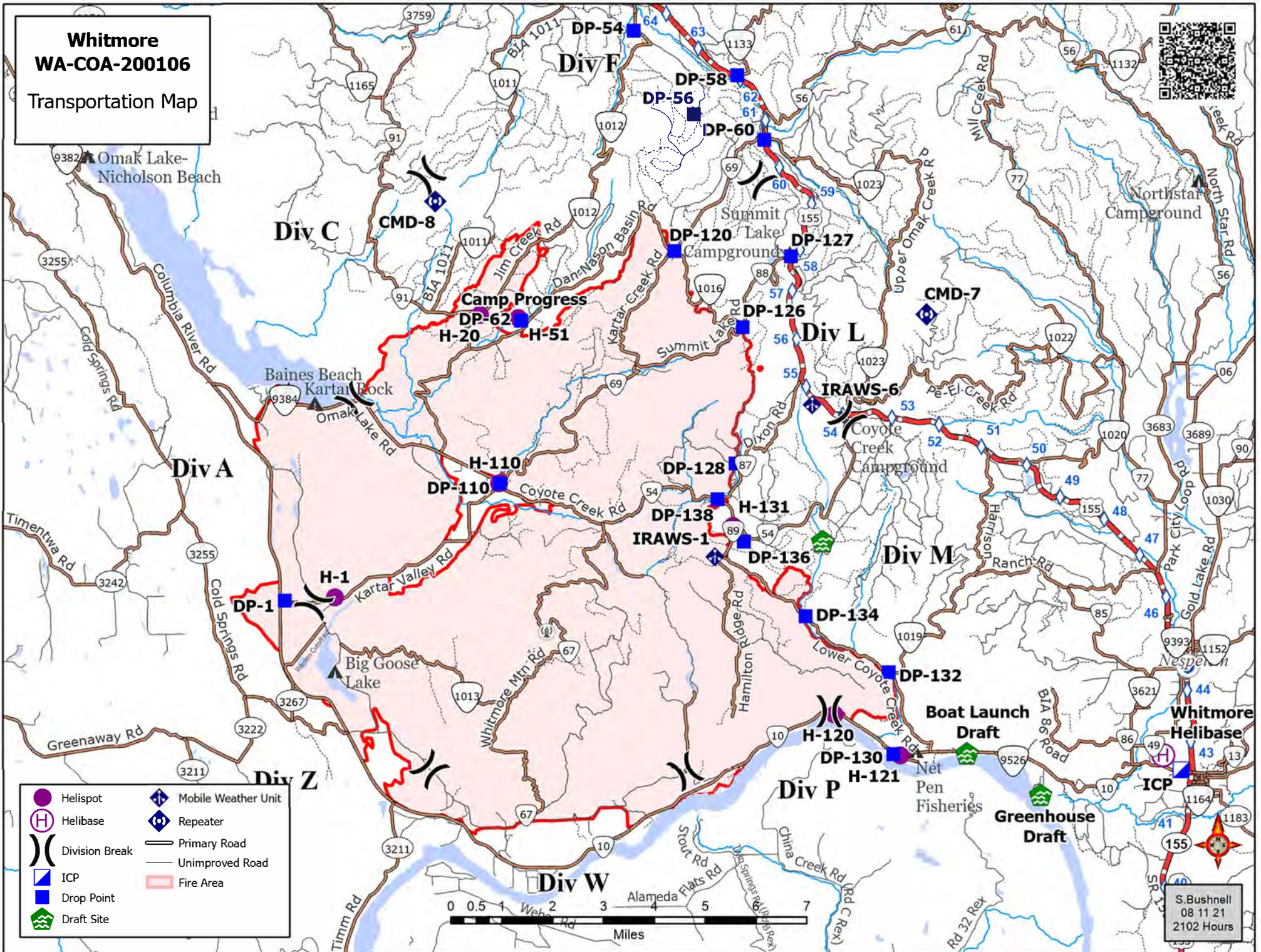
1. Tap and hold on the desired map link, then choose 'copy' to copy the direct URL to the map
2. Launch the Avenza app
3. When not in any map... Tap the + (plus) icon at the top of the screen
4. Choose the load from URL option (last choice)
5. Paste the direct URL to the map
6. Tap 'Done' ; the map will begin downloading



### How to Send Map Updates to the Situation Unit

1. From within the map in Avenza, click the pin with three lines near the lower-right corner.
2. *iPhone:* In the lower right, click the square with up arrow. From the pop-up menu, choose Export to Others.  
*Android:* In the lower right, click the circle with three lines. Click the pop-up circle with up arrow.
3. Set these options:
  - a. Filename – leave alone
  - b. Export Format – choose SHP, GPX or KML
  - c. Data – all features
  - d. Image size – no image
4. Click the Export button in the upper-right corner.
5. When the export is ready, choose your Mail application.
6. Email the update to [2021.whitmore.situation@firenet.gov](mailto:2021.whitmore.situation@firenet.gov).
7. If you have questions, call or text the Situation Unit at 360-584-3373.
8. Your email needs to include an explanation of the data you are sending and a contact phone number.

**Whitmore  
WA-COA-200106  
Transportation Map**



- Helispot
- Helibase
- Division Break
- ICP
- Drop Point
- Draft Site
- Mobile Weather Unit
- Repeater
- Primary Road
- Unimproved Road
- Fire Area

## WHITMORE FIRE COVID-19 MITIGATIONS

**Supervisors are required to go over this list each morning with assigned resources- report any positive symptoms to medical unit.**

In the last 24 hours have you experienced:

- Cough more than expected?
- Shortness of breath or difficulty breathing?
- Fever? Chills?
- Muscle pain, outside your normal for firefighting?
- Sore throat?
- New loss of taste or smell?
- Fatigue, outside your normal for firefighting?
- Headache, outside your normal for firefighting?
- Congestion or runny nose, outside your normal for firefighting?
- Nausea or vomiting
- Diarrhea

*\* Take temperature with no-touch thermometer, if available \**



**Wear a mask in fire camp regardless of vaccination status, unless outdoors and able to maintain at least 6ft of distance at all times, alone in an enclosed space or actively engaged in firefighting on the fireline.**

**Use the Zoom link provided to join briefings remotely.**

**Observe 6ft Distancing whenever possible.**

**Observe “Module as One” practices – only close contact with crew (engine, handcrew, etc.) that you live and work with all summer. Observe distancing and masking around everyone else. Do not co-mingle with other crews or “modules” in camp or on the line.**

**Send crew representatives to pick up meals - masks must be worn in food lines.**

**No entry to ICP building except Incident Management Team members**

**Wash hands frequently and disinfect high-traffic areas on a regular basis.**

**Limit close contact between firefighters and the public to prevent exposure and spread.**

<b>UNIT LOG</b>		1. Incident Name	2. Date Prepared	3. Time Prepared
4. Unit Name/Designators		5. Unit Leader (Name and Position)	6. Operational Period	
7. Personnel Roster Assigned				
Name		ICS Position		Home Base
8. Activity Log				
Time		Major Events		
9. Prepared by (Name and Position)				

## **EMERGENCY PLAN**

### **INCIDENT WITHIN AN INCIDENT**

#### **ON SCENE SUPERVISOR**

**In the event of an accident or medical incident of any size, your primary responsibility is to ENSURE that the victim(s) receive prompt and effective Triage, Treatment and Transportation.**

- Conduct size-up of the incident (nature of accident, number type of resources involved, latitude and longitude location): notify incident communications center and supervisor, request assistance as needed.
- Order and coordinate medical and support response to the accident.
- Evaluate special needs (law enforcement, haz mat, etc.).
- Clear the command frequency if medical emergency; coordinate with incident communications and air attack for air medical transportation needs
- Preserve and photograph the scene for accident investigation.
- Remain aware of surroundings and the status of the main incident (delegate personnel to monitor the main fire) to ensure safety of medical treatment personnel.
- Until relieved, supervise and manage all personnel involved at the incident scene.
- **ENSURE THE MEDICAL INCIDENT REPORT IN THE INCIDENT ACTION PLAN IS BEING USED AND FOLLOWED.**

# MEDICAL PLAN (ICS 206 WF)

20 Incident/Project Name		1. Operational Period						
Whitmore Fire		Date/Time 8/13-14/2021 0600-0600						
2. Ambulance Services								
Name	Complete Address	Phone		Advanced Life Support (ALS) Yes No				
Colville Tribal EMS Nespelem, WA	410 10 <sup>th</sup> St. Nespelem, WA 99155	911 - Dispatch 509-634-2472 509-978-9323			x			
Lifeline Ambulance	912 Koala Ave Omak, WA 98841	911 - Dispatch 509-663-8091		x				
3. Air Ambulance Services								
Name	Phone	Type of Aircraft & Capability						
Airlift Northwest	800-426-2430 or 911	Rotor in Wenatchee						
Life Flight Network	800-232-0911	2 Rotors, 1 Fixed Wing, Spokane						
4. Hospitals								
Name Complete Address	GPS Datum – WGS 84 Coordinate Standard Degrees Decimal Minutes DD° MM.MMM' N - Lat DD° MM.MMM' W - Long		Travel Time From ICP Air Gnd		Phone	Helipad Yes No	Level of Care Facility	
	Lat:							
Coulee Medical Center 411 Fortuyn Rd Grand Coulee, WA 99133	44°56.5186' N	20 Min	40 Min	509-633-1753	x		Level 4 Trauma	
	Long:							119°0.4333' W
	VHF:							
Mid-Valley Hospital 912 Koala Ave Omak, WA 98841	48°23.8336' N	40 Min	1Hr 14 min	509-826-1760	x		Level 4 Trauma	
	Long:							119°32.8758' W
	VHF:							
Confluence Health Hospital (Central Washington Hospital) 1201 S Miller St. Wenatchee, WA 98801	47°24.4340' N	1Hr 10 Min	2 Hr 30 Min	509-662-1511	x		Level 2 Trauma	
	Long:							120°19.3664' W
	VHF :							
Harborview Medical 325 9 <sup>th</sup> Ave Seattle, WA 98104	47°36.1897' N	2 Hr 15 Min	4 Hr 30 Min	541-222-6929	x		Level 1 Trauma Burn Center	
	Long:							122°19.4759' W
	VHF:							
5. Division   Branch   Group		Capability	Personnel					
Div A/W/Z/P			Unstaffed					
Div M			Medic 3 Justin Smith O-36					
Div L		Ambo 2 (BLS) E-67	Ambo 3 (ALS Non Fireline) E-5002		Medic 1 Lipsker O-62			
Div C		Medic 2 Jennel Smith O-37	EMT 2 Lukowicz O-175		Ambo 1 (ALS) E-5			
Div F			REMS 9 O-43					
Night Shift North/South			EMT 1 Wellman O-176					
Structure Protection			Unstaffed					
6. Prepared By (Medical Unit Leader)		7. Date/Time	8. Reviewed By (Safety Officer)		9. Date/Time			
Eamonn Ryan, Diana Braun, Lee Venning (T) <i>Lee Venning</i>		08/12/2021 1800	<i>Don Waller</i>		08/12/2021 1800			



# MEDICAL PLAN (ICS 206 WF)

Controlled Unclassified Information//Basic

## Medical Incident Report

**FOR A NON-EMERGENCY INCIDENT, WORK THROUGH CHAIN OF COMMAND TO REPORT AND TRANSPORT INJURED PERSONNEL AS NECESSARY.**

**FOR A MEDICAL EMERGENCY: IDENTIFY ON SCENE INCIDENT COMMANDER BY NAME AND POSITION AND ANNOUNCE "MEDICAL EMERGENCY" TO INITIATE RESPONSE FROM IMT COMMUNICATIONS/DISPATCH.**

Use the following items to communicate situation to communications/dispatch.

1. CONTACT COMMUNICATIONS / DISPATCH (**Verify correct frequency prior to starting report**)

*Ex: "Communications, Div. Alpha. Stand-by for Emergency Traffic."*

2. INCIDENT STATUS: *Provide incident summary (including number of patients) and command structure.*

*Ex: "Communications, I have a Red priority patient, unconscious, struck by a falling tree. Requesting air ambulance to Forest Road 1 at (Lat./Long.) This will be the Trout Meadow Medical, IC is TFLD Jones. EMT Smith is providing medical care."*

Severity of Emergency / Transport Priority	<input type="checkbox"/> RED / PRIORITY 1 Life or limb threatening injury or illness. Evacuation need is IMMEDIATE <i>Ex: Unconscious, difficulty breathing, bleeding severely, 2° – 3° burns more than 4 palm sizes, heat stroke, disoriented.</i> <input type="checkbox"/> YELLOW / PRIORITY 2 Serious Injury or illness. Evacuation may be DELAYED if necessary. <i>Ex: Significant trauma, unable to walk, 2° – 3° burns not more than 1-3 palm sizes.</i> <input type="checkbox"/> GREEN / PRIORITY 3 Minor Injury or illness. Non-Emergency transport <i>Ex: Sprains, strains, minor heat-related illness.</i>	
Nature of Injury or Illness & Mechanism of Injury		<i>Brief Summary of Injury or Illness (Ex: Unconscious, Struck by Falling Tree)</i>
Transport Request		<i>Air Ambulance / Short Haul/Hoist Ground Ambulance / Other</i>
Patient Location		<i>Descriptive Location &amp; Lat. / Long. (WGS84)</i>
Incident Name		<i>Geographic Name + "Medical" (Ex: Trout Meadow Medical)</i>
On-Scene Incident Commander		<i>Name of on-scene IC of Incident within an Incident (Ex: TFLD Jones)</i>
Patient Care		<i>Name of Care Provider (Ex: EMT Smith)</i>

3. INITIAL PATIENT ASSESSMENT: *Complete this section for each patient as applicable (start with the most severe patient)*

Patient Assessment: See IRPG page 106

Treatment:

4. TRANSPORT PLAN:

Evacuation Location (*if different*): (*Descriptive Location (drop point, intersection, etc.) or Lat. / Long.*) Patient's ETA to Evacuation Location:

Helispot / Extraction Site Size and Hazards:

5. ADDITIONAL RESOURCES / EQUIPMENT NEEDS:

*Example: Paramedic/EMT, Crews, Immobilization Devices, AED, Oxygen, Trauma Bag, IV/Fluid(s), Splints, Rope rescue, Wheeled litter, HAZMAT, Extrication*

6. COMMUNICATIONS: Identify State Air/Ground EMS Frequencies and Hospital Contacts as applicable

Function	Channel Name/Number	Receive (RX)	Tone/NAC *	Transmit (TX)	Tone/NAC *
COMMAND					
AIR-TO-GRND					
TACTICAL					

7. CONTINGENCY: **Considerations:** *If primary options fail, what actions can be implemented in conjunction with primary evacuation method? Be thinking ahead.*

8. ADDITIONAL INFORMATION: *Updates/Changes, etc.*

**REMEMBER:** Confirm ETA's of resources ordered. Act according to your level of training. Be Alert. Keep Calm. Think Clearly. Act Decisively.

Controlled Unclassified Information//Basic